

V&V Reference Report

L2 ASCDS Version : 10.8.1

Observation 22868 - L2 Version 1
Chandra X-Ray Center

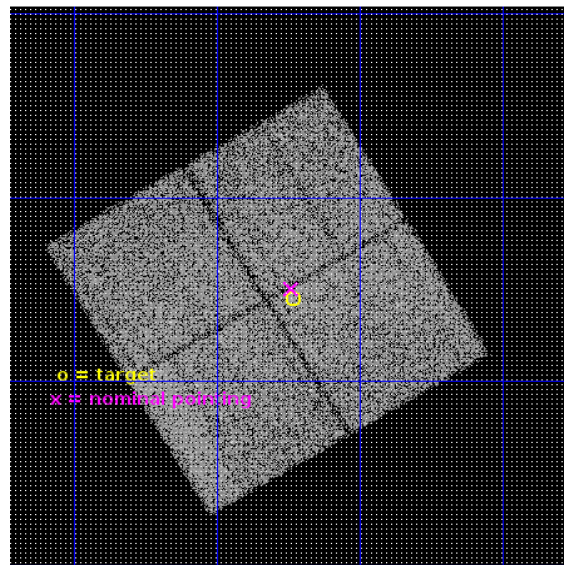
L2 Processing Date : Oct 11 2019

Contents

1	Front	2
2	OBI	3
2.1	OBI	3
2.1.1	Images	3
2.1.2	Bias	3
2.1.3	Parameters	4
2.1.4	Events	4
2.2	Compared Parameters	5
2.3	Aspect	6
2.4	Star Slots	9
2.4.1	Slot 3	9
2.4.2	Slot 4	10
2.4.3	Slot 5	11
2.4.4	Slot 6	12
2.4.5	Slot 7	13
2.5	FID Slots	14
2.5.1	Slot 0	14
2.5.2	Slot 1	15
2.5.3	Slot 2	16
A	Summary	17
A.1	Status	17
A.2	Comments	17

1 Front

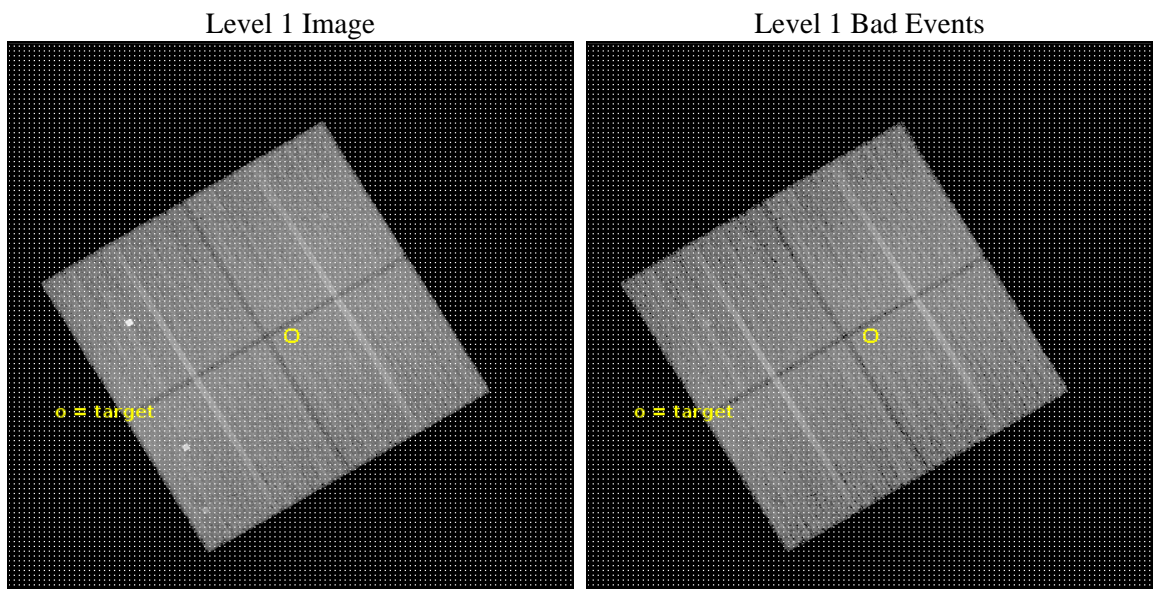
seq_num	703950	Sequence number
obs_id	22868	Observation id
title	Unveiling the AGN population in the highest redshift, mature, massive galaxy cluster	Proposal title
observer	Emil Noordeh	Principal investigator
object	XLSSC 122	Source name
dtcycle	0	
cycle	P	events from which exps? Prim/Second/Both
ra_targ	34.433	Observer's specified target RA [deg]
dec_targ	-3.759	Observer's specified target Dec [deg]
ra_nom	34.434902574324	Nominal RA [deg]
dec_nom	-3.7496118585364	Nominal Dec [deg]
roll_nom	59.208812118882	Nominal Roll [deg]
revision	1	Processing version of data
ontime	35076.15373075	Sum of GTIs [s]
livetime	34617.857959569	Livetime [s]
ontime0	35076.0306108	Sum of GTIs [s]
ontime1	35076.071650743	Sum of GTIs [s]
ontime2	35072.971610665	Sum of GTIs [s]
ontime3	35076.15373075	Sum of GTIs [s]
l2events	100805	Number of level 2 events



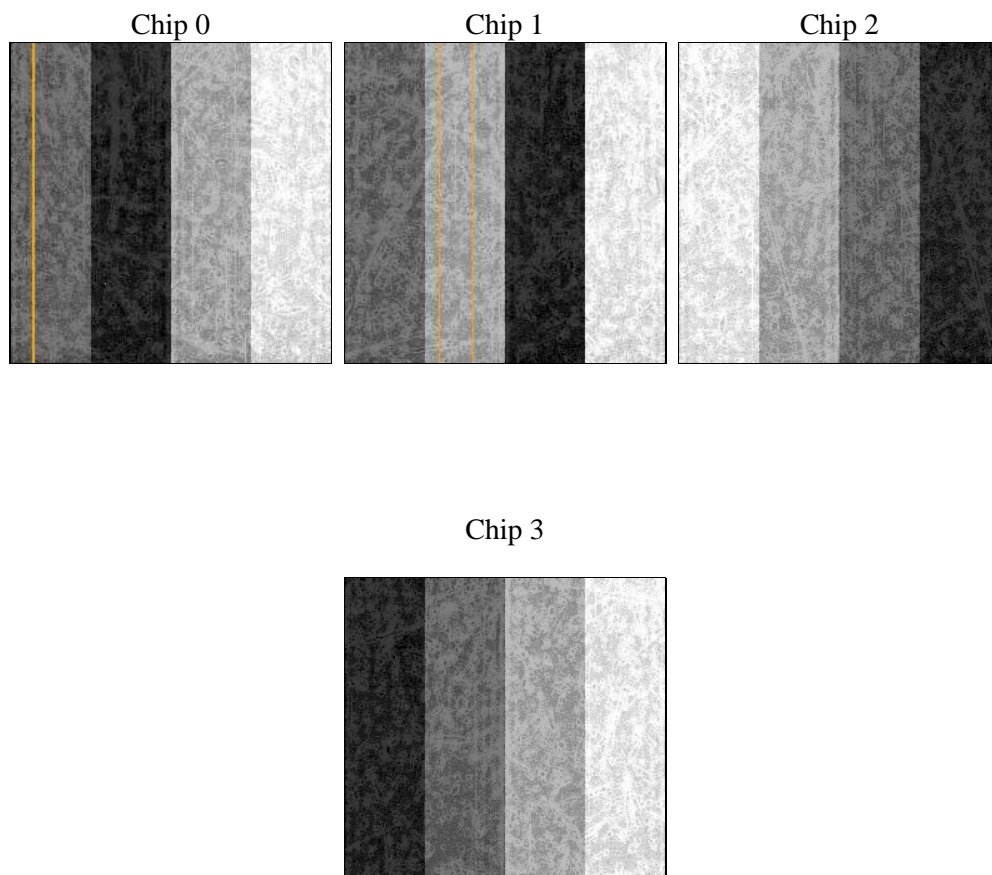
2 OBI

2.1 OBI

2.1.1 Images



2.1.2 Bias



2.1.3 Parameters

obi_num	0	Obi number	sched_exp_time	35000.000000	[s] Scheduled observation exposure time
ascdsver	10.8.1	Processing system revision	ontime	35076.15373075	Sum of GTIs [s]
caldsver	4.8.4.2	 	ontime0	35076.0306108	Sum of GTIs [s]
date	2019-10-11T15:23:56	Date and time of file creation	ontime1	35076.071650743	Sum of GTIs [s]
revision	1	Processing version of data	ontime2	35072.971610665	Sum of GTIs [s]
			ontime3	35076.15373075	Sum of GTIs [s]
			l1events	1071615	Number of level 1 events

2.1.4 Events

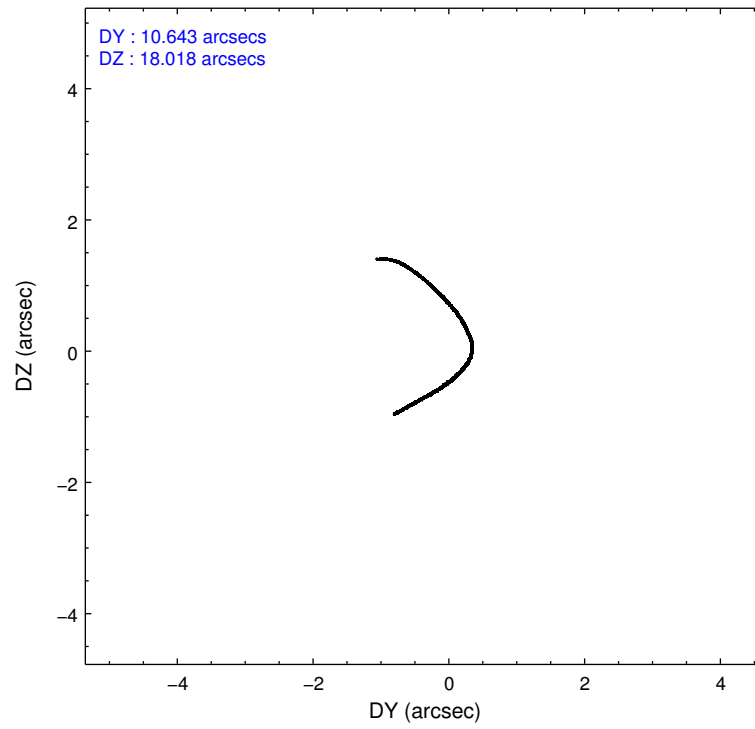
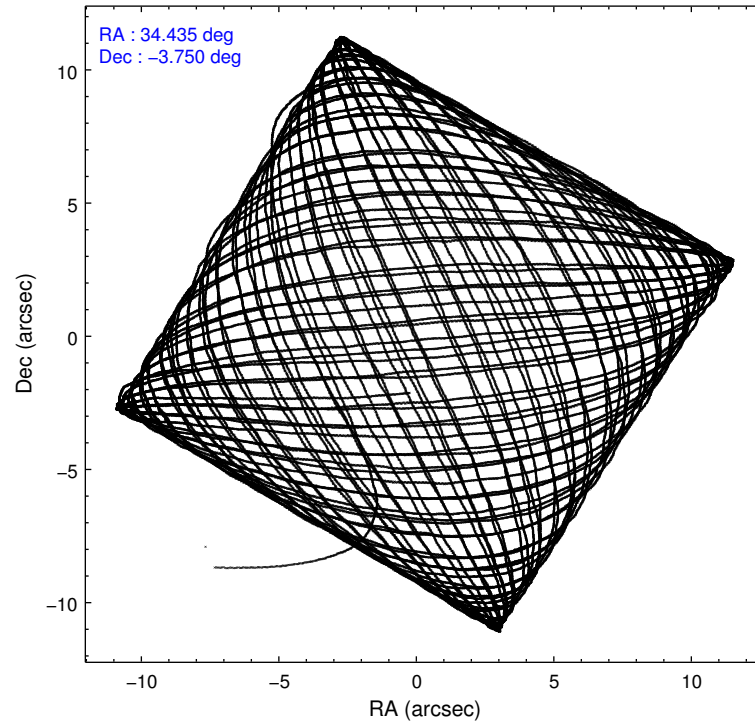
	ccd 0	ccd 1	ccd 2	ccd 3
level 1 events	263139	261760	278015	268701
rejected events	215509	221779	248218	240616
rejected %	81%	84%	89%	89%

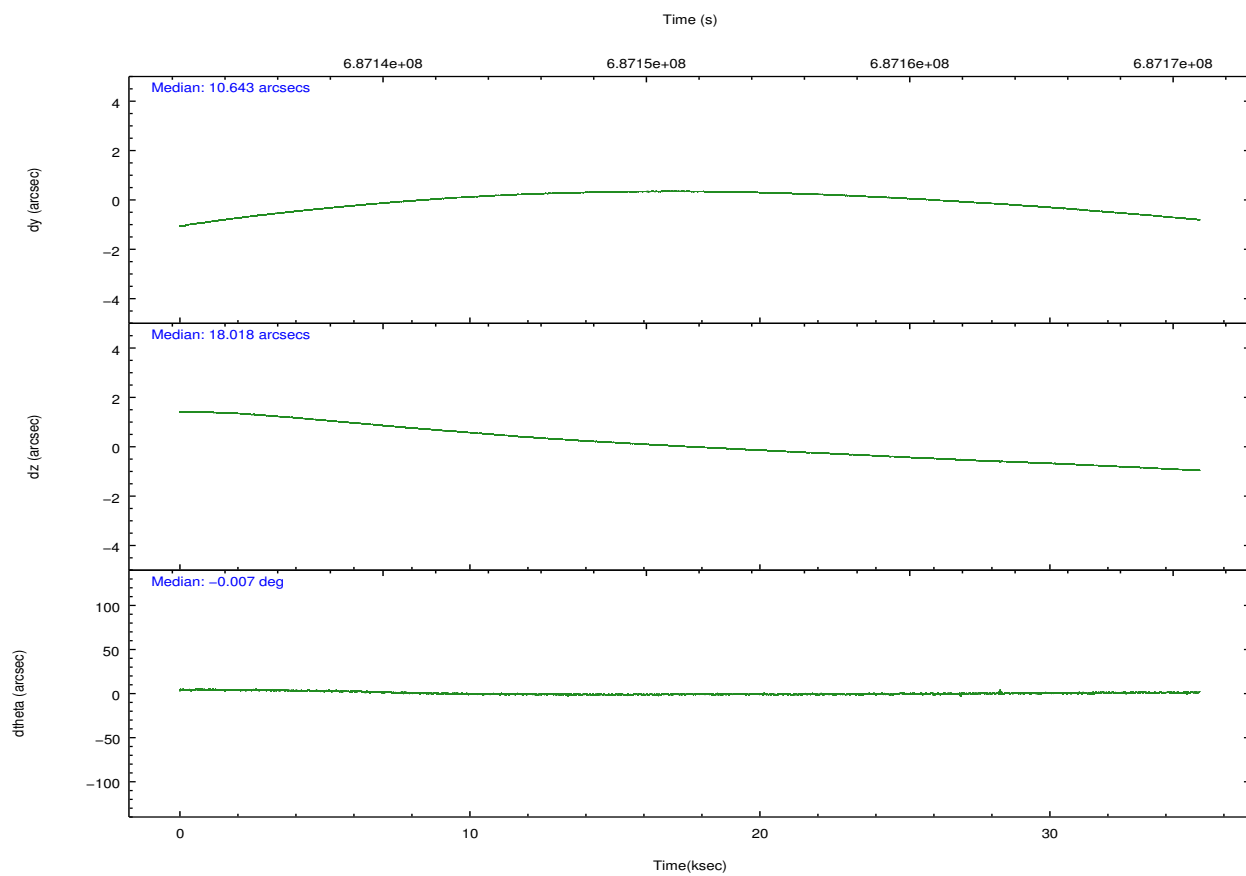
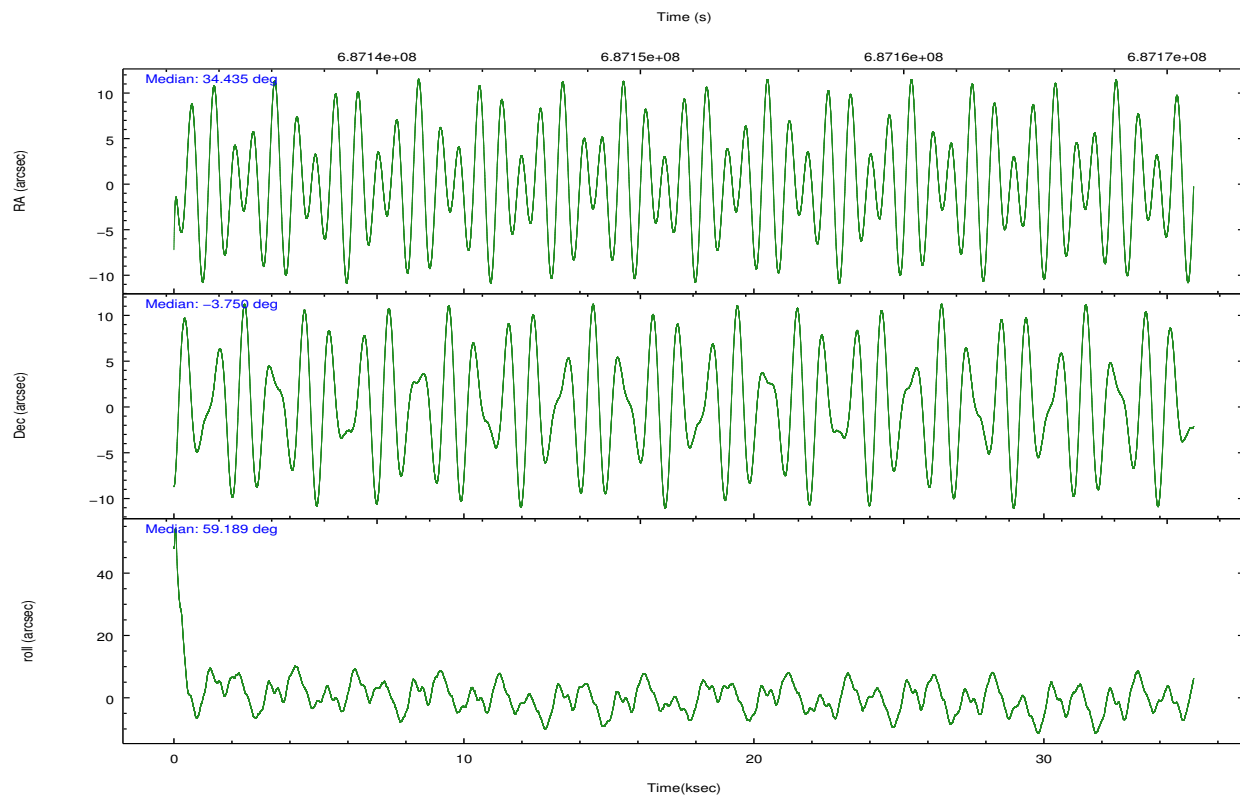
	ccd 0	ccd 1	ccd 2	ccd 3
grade 0 events	16883	17639	10837	9735
	6%	6%	3%	3%
grade 1 events	181	190	162	164
	0%	0%	0%	0%
grade 2 events	7789	8430	7186	6213
	2%	3%	2%	2%
grade 3 events	4756	3007	2894	2894
	1%	1%	1%	1%
grade 4 events	11655	2911	2966	2955
	4%	1%	1%	1%
grade 5 events	11535	11838	11287	12760
	4%	4%	4%	4%
grade 6 events	6554	8005	5916	6293
	2%	3%	2%	2%
grade 7 events	203786	209740	236767	227687
	77%	80%	85%	84%

2.2 Compared Parameters

Parameter	Planned	Actual	Parameter	Planned	Actual
Instrument	ACIS	ACIS	Obspar format version number	7	7
Detector	ACIS-0123	ACIS-0123	Obspar file type	PREDICTED	ACTUAL
Grating	NONE	NONE	Obspar update status	NONE	UPDATED
Data mode	VFAINT	VFAINT	CCD I0 on	Y	Y
Observation mode	POINTING	POINTING	CCD I1 on	Y	Y
[deg] Pointing RA	34.434639	34.43490257432362	CCD I2 on	Y	Y
[deg] Pointing Dec	-3.777211	-3.749611858536424	CCD I3 on	Y	Y
[deg] Pointing Roll	59.000106	59.20881211888213	CCD S0 on	N	N
[mm] SIM focus pos	-0.782348	-0.7809083437167272	CCD S1 on	N	N
[mm] SIM defocus	0	0.001439871863259334	CCD S2 on	O1	N
[mm] SIM translation stage pos	-231.592463	-231.5960967419932	CCD S3 on	N	N
[mm] SIM translation stage offset	-2	-1.996356260936523	CCD S4 on	N	N
[s] Observation start time (MET)	687134241.184000	687132944.55265	CCD S5 on	N	N
Observation start date	2019-10-10T22:36:12	2019-10-10T22:15:44	Number of optional ACIS chips dropped	1	1
[s] Observation end time (MET)	687169241.184000	687170296.5799	On-chip summing requested	N	N
Observation end date	2019-10-11T08:19:32	2019-10-11T08:38:16	Subarray requested	NONE	NONE
Read mode	TIMED	TIMED	Alternating exposures requested	N	N
			[s] Primary exposure time	0.000000	3.1

2.3 Aspect



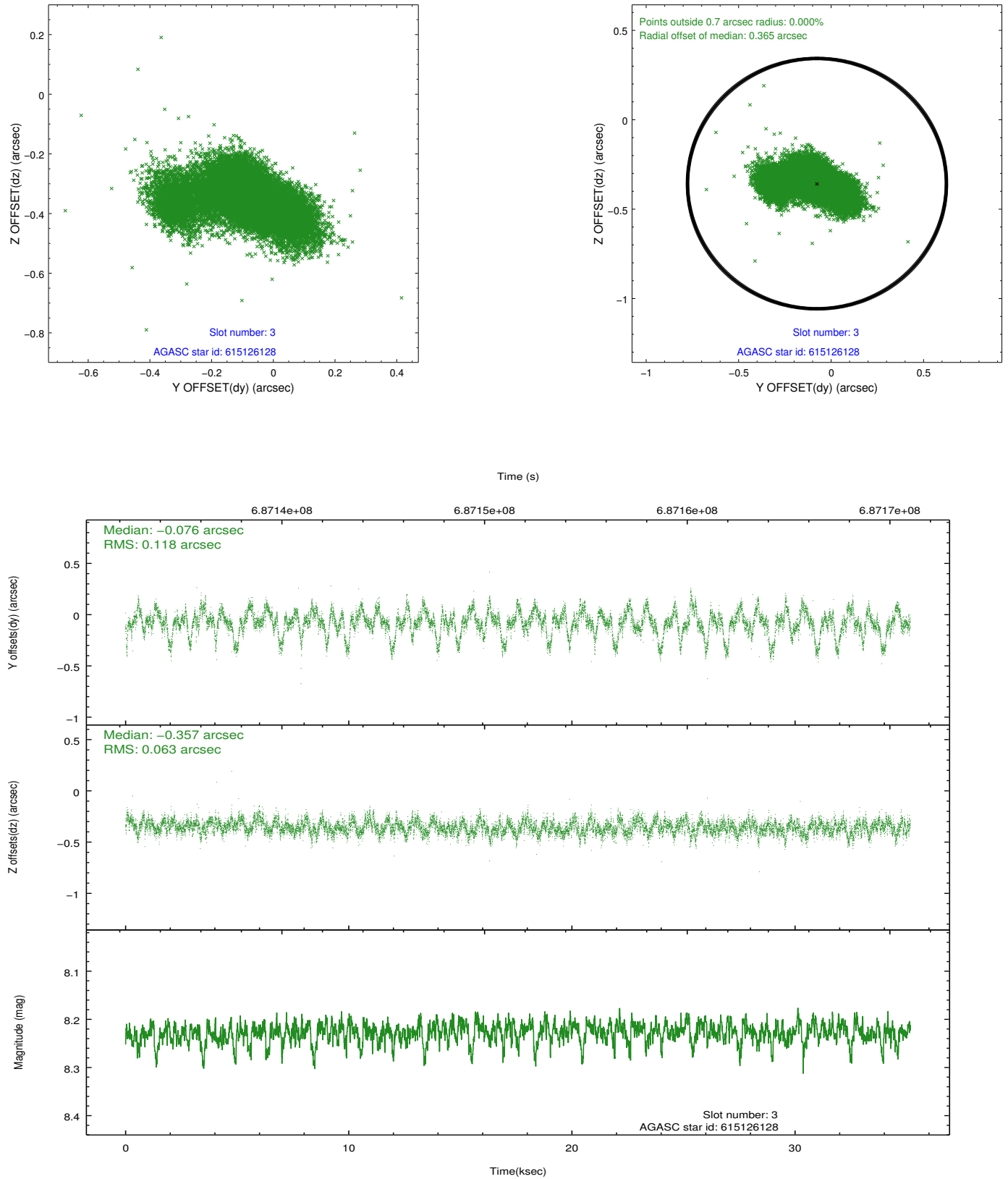


Slot Statistics

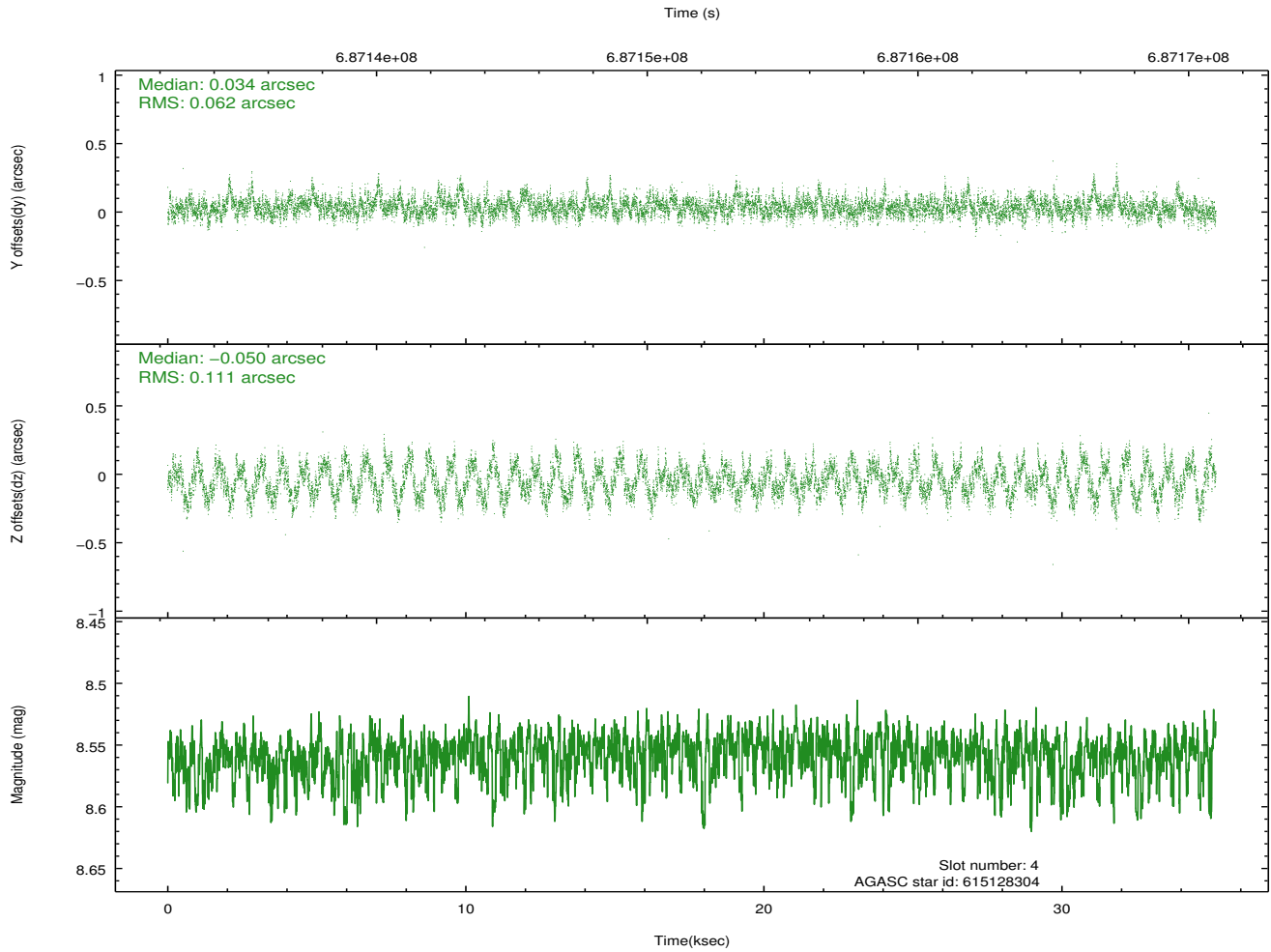
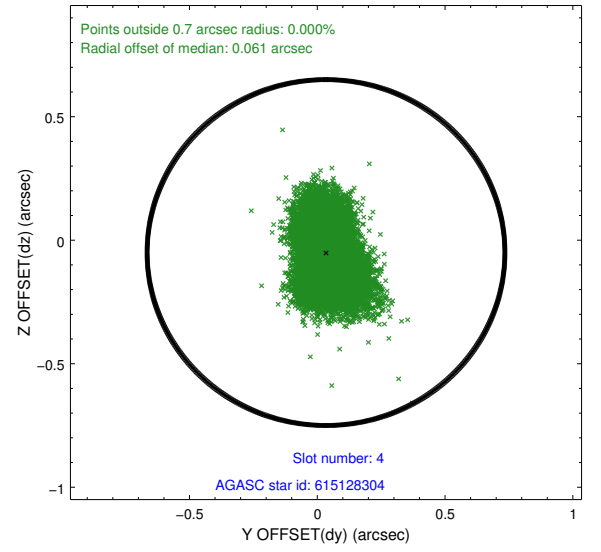
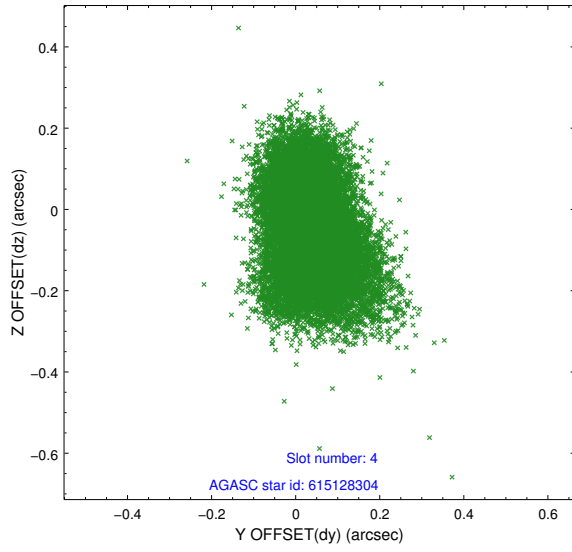
pt	status	used	id	mag	n_pts	frac_pts	med_dy	med_dz	dr1	dr2	ra	dec	mean_y	mea
0	FID		ACIS-I-1	7.21	8577	1.000	0.119	-0.096	0.014	0.050	0.000000	0.000000	929.19	-882
1	FID		ACIS-I-5	7.19	8576	1.000	-0.487	0.033	0.010	0.016	0.000000	0.000000	-1819.66	1014
2	FID		ACIS-I-6	7.19	8576	1.000	0.279	0.135	0.017	0.047	0.000000	0.000000	394.63	1659
3	GUIDE	used	615126128	8.23	17148	1.000	-0.076	-0.357	0.132	0.259	34.026050	-3.868420	-1037.79	1088
4	GUIDE	used	615128304	8.56	17146	1.000	0.034	-0.050	0.136	0.221	34.566287	-4.097564	-742.99	-1000
5	GUIDE	used	615129592	8.84	17131	1.000	0.016	0.272	0.160	0.247	34.607456	-4.334536	-1399.84	-1565
6	GUIDE	used	615129680	8.99	17133	1.000	0.021	0.307	0.143	0.220	34.462822	-4.356201	-1733.88	-1159
7	GUIDE	used	615129992	8.38	17143	1.000	0.007	-0.170	0.098	0.167	33.989595	-4.095121	-1803.45	776

2.4 Star Slots

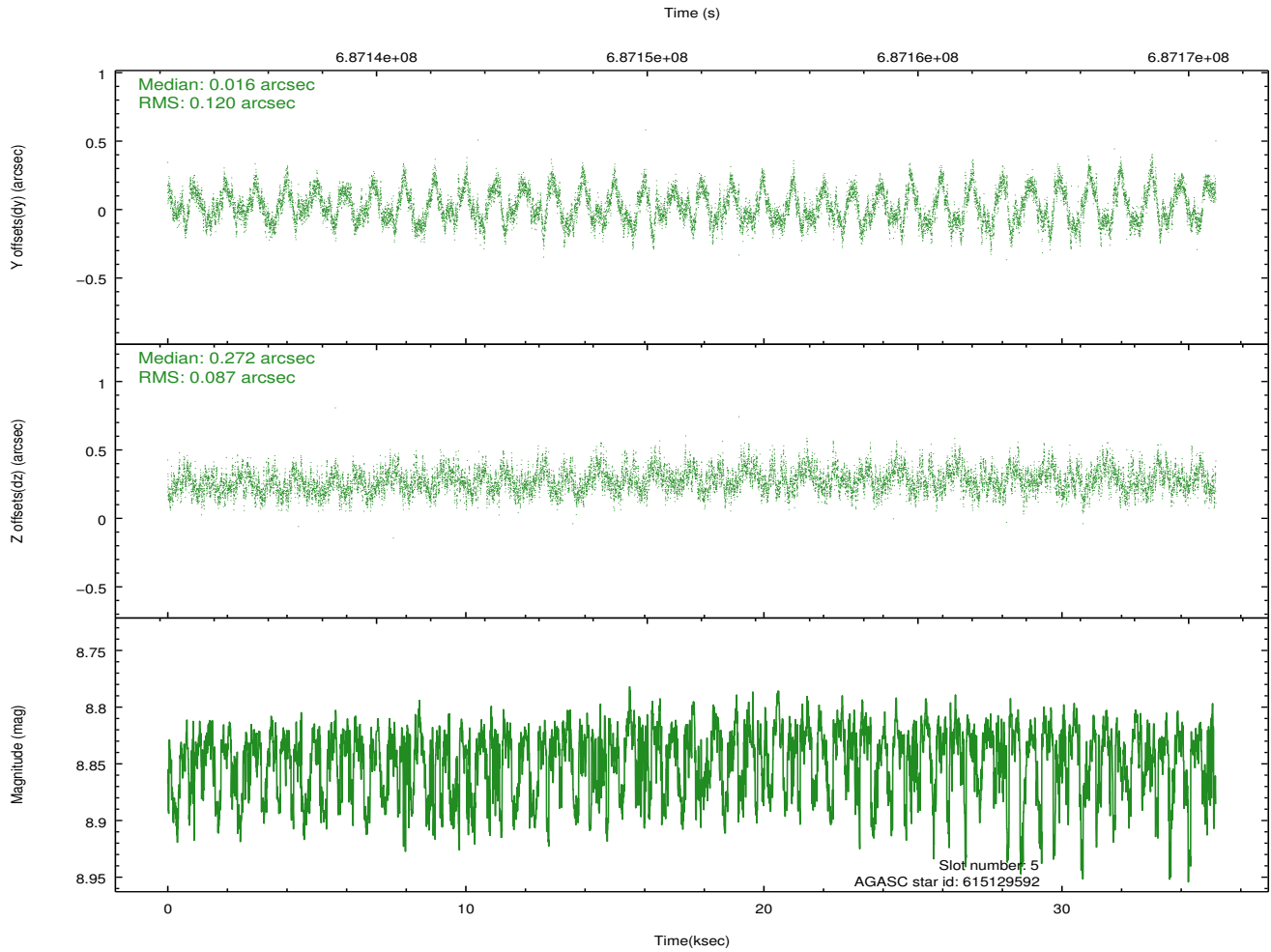
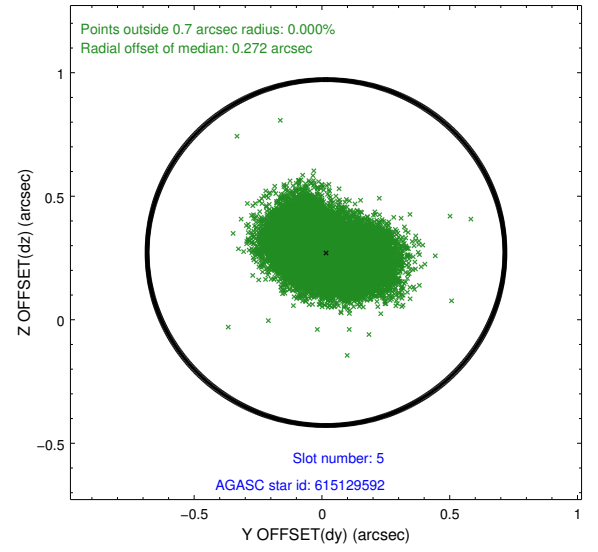
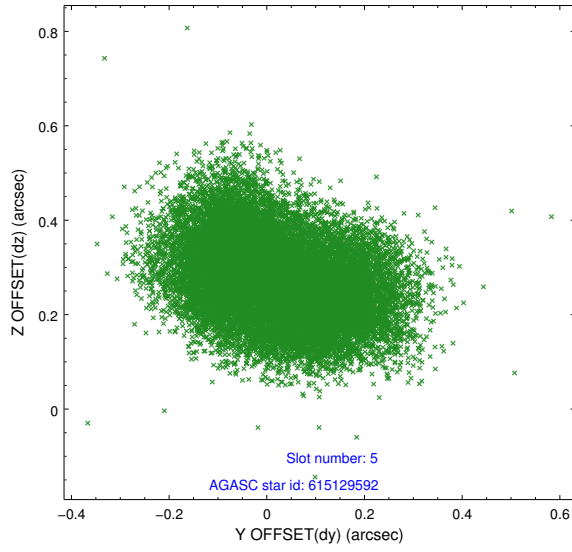
2.4.1 Slot 3



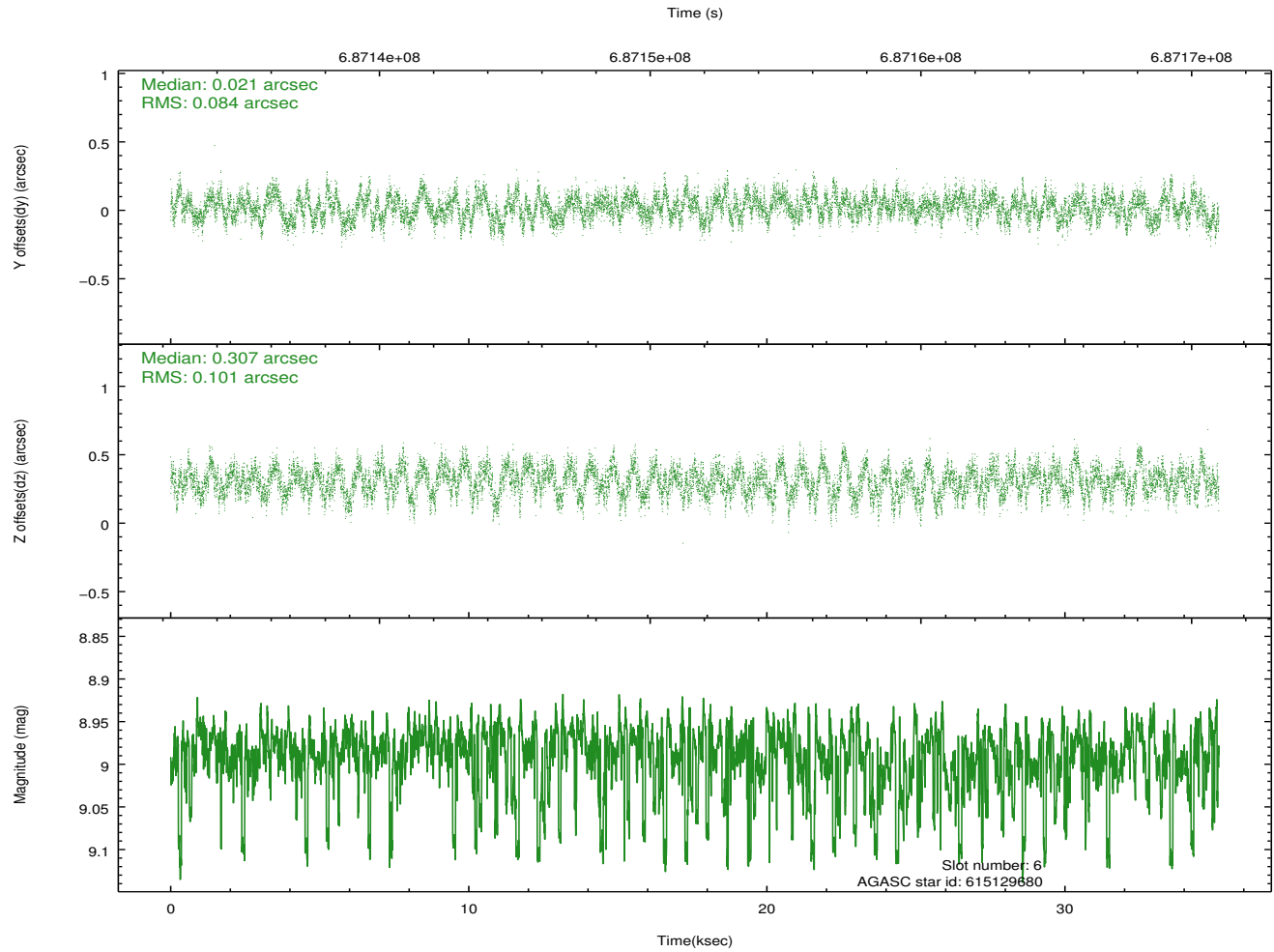
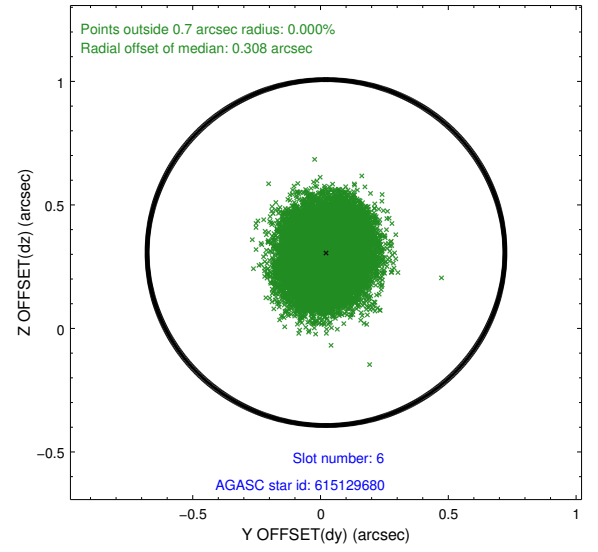
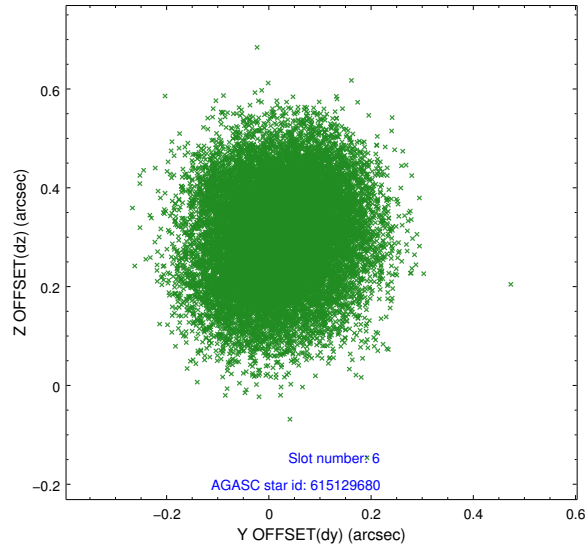
2.4.2 Slot 4



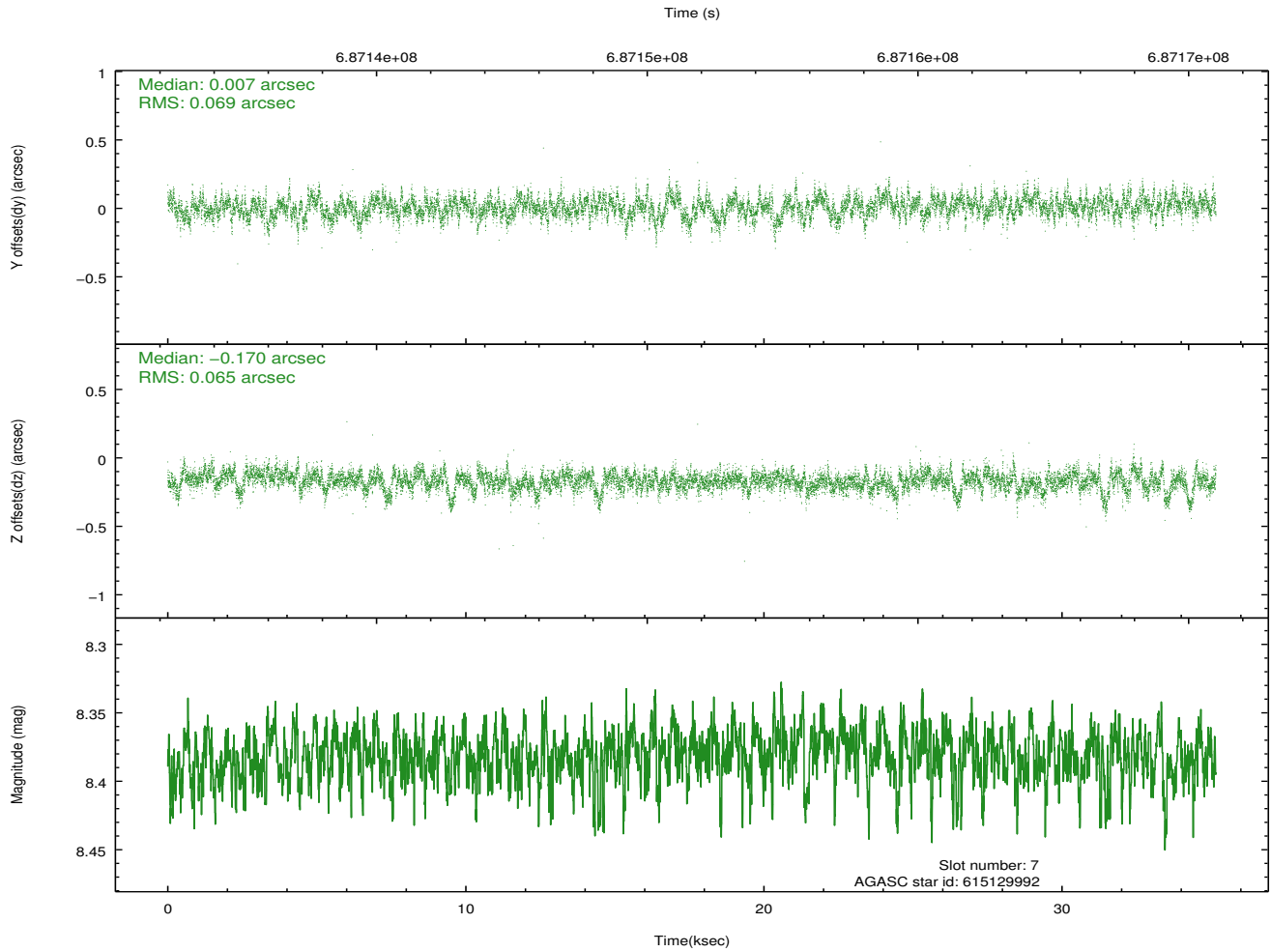
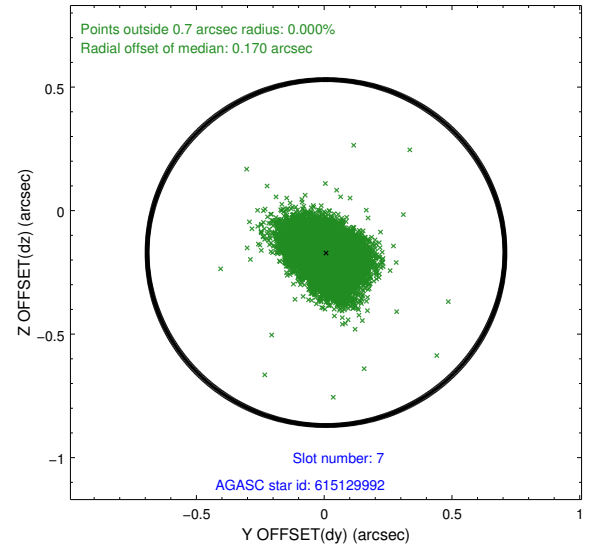
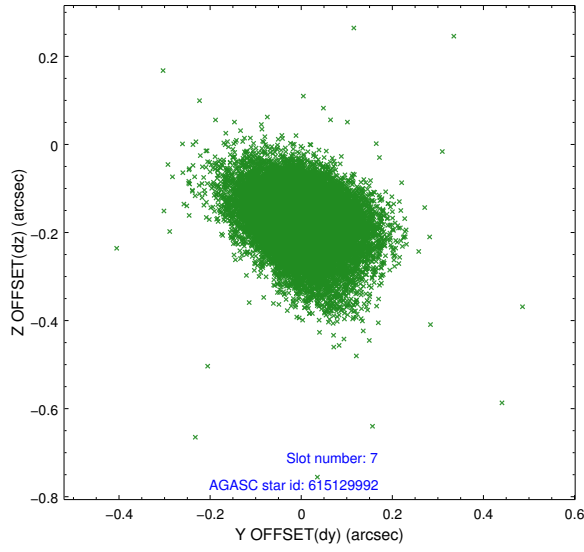
2.4.3 Slot 5



2.4.4 Slot 6

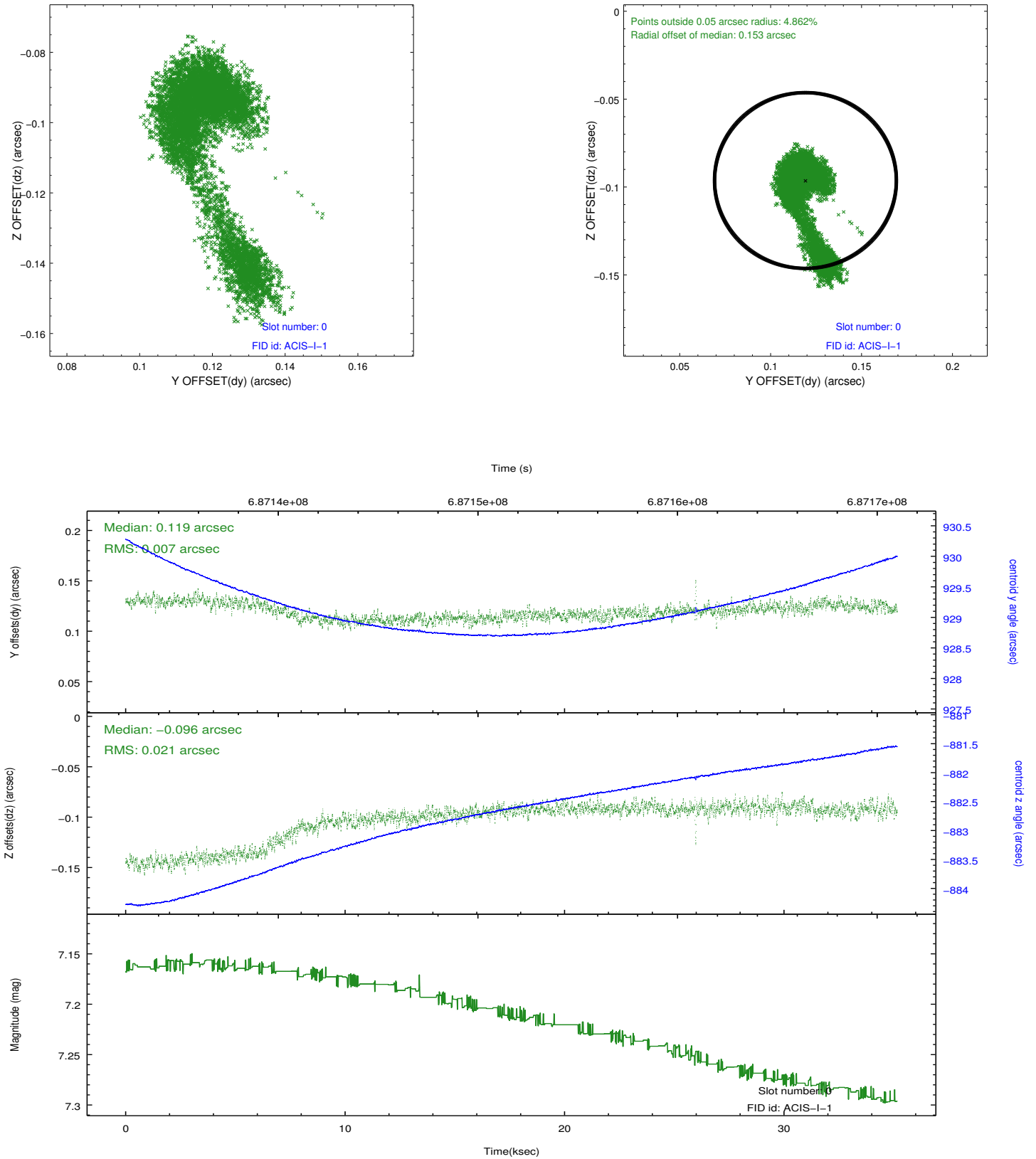


2.4.5 Slot 7

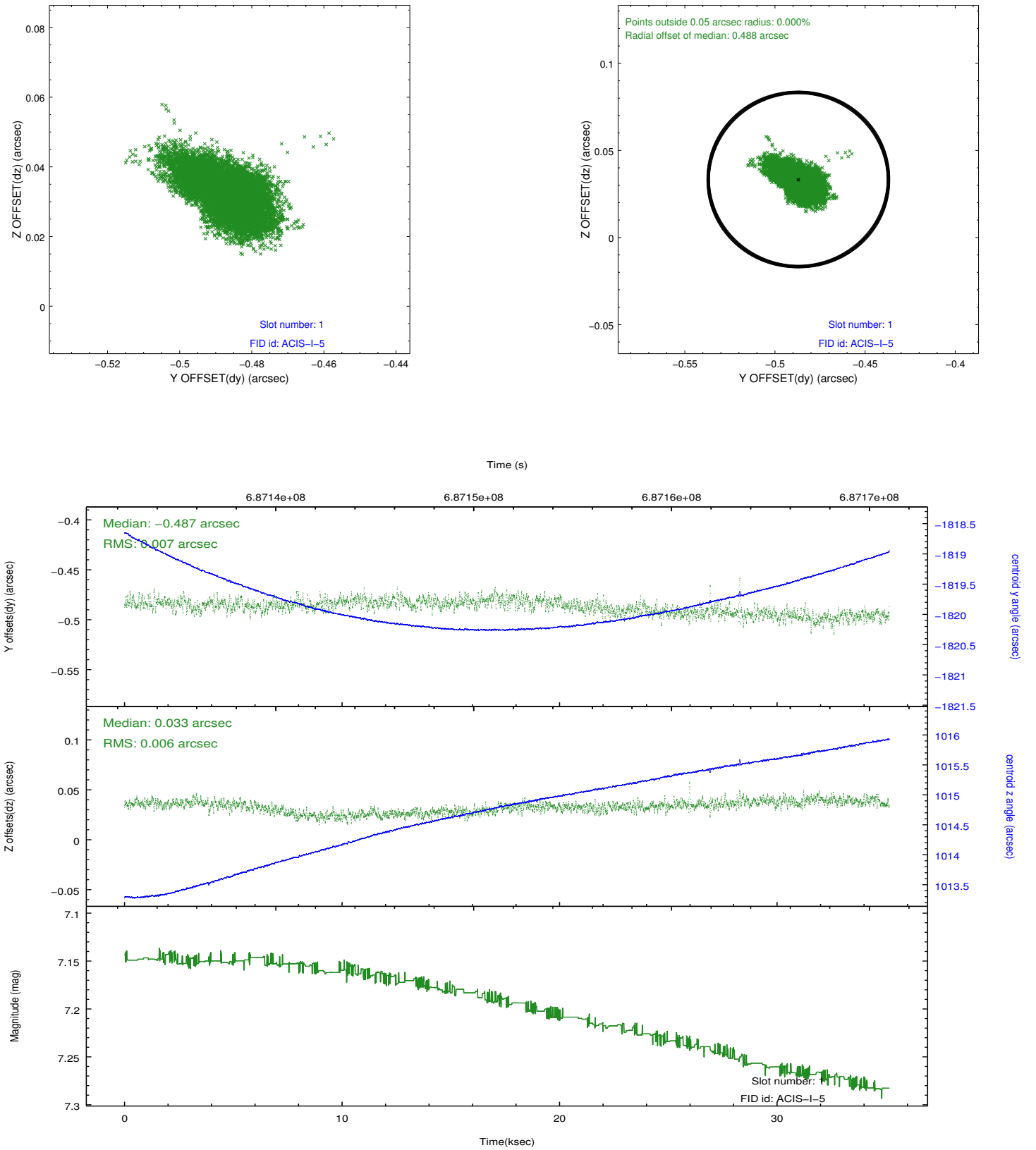


2.5 FID Slots

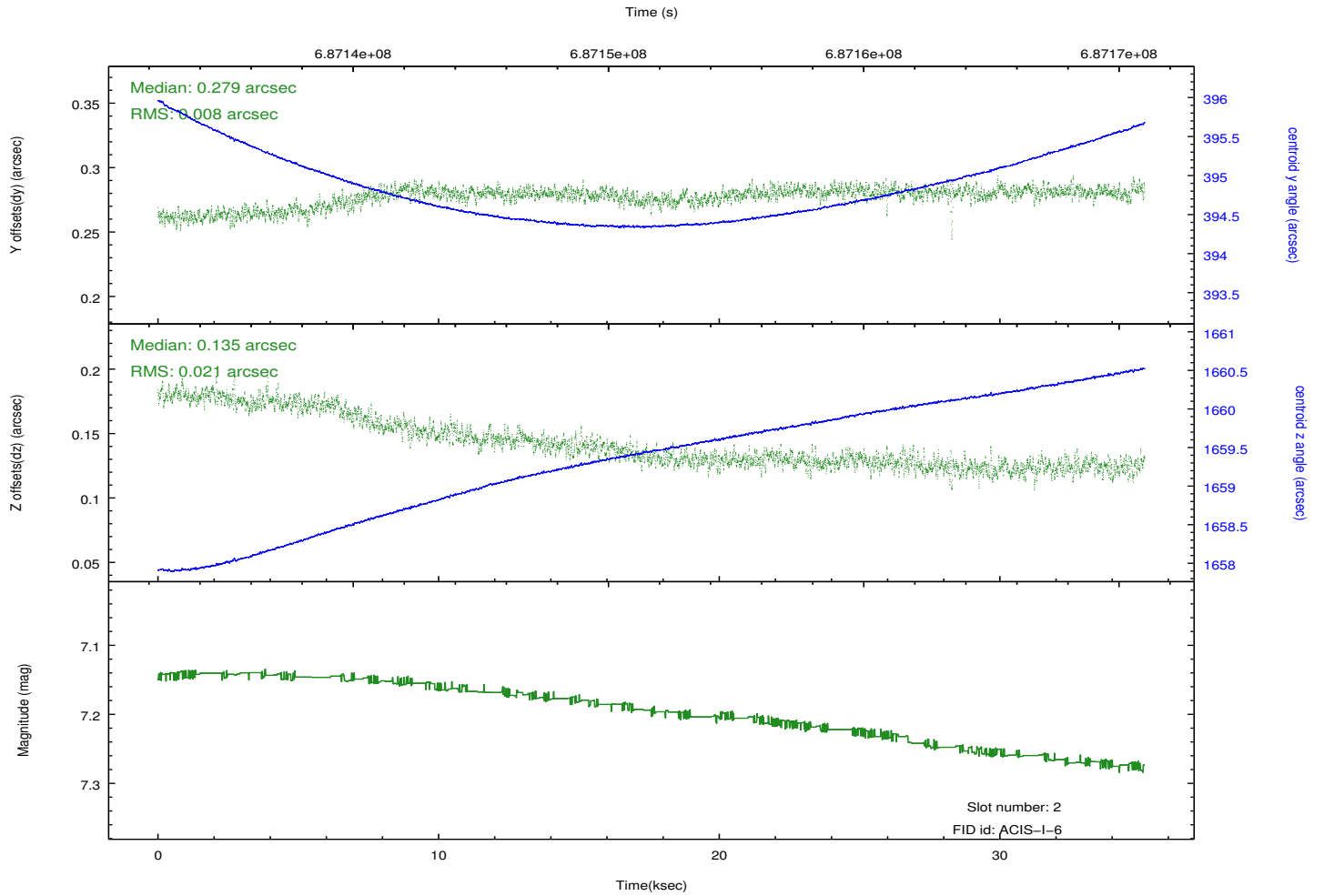
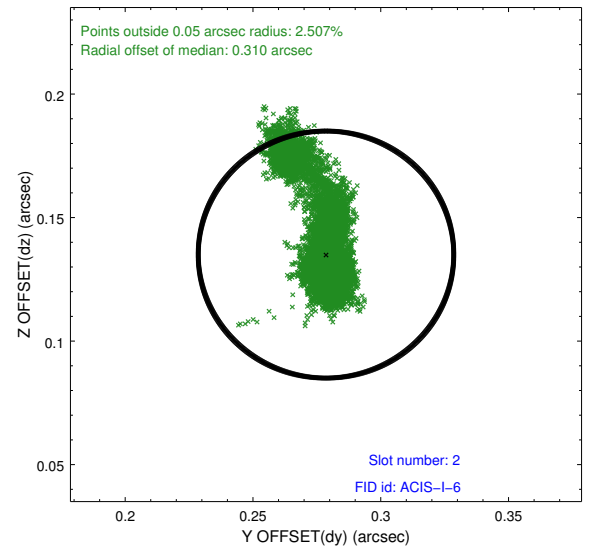
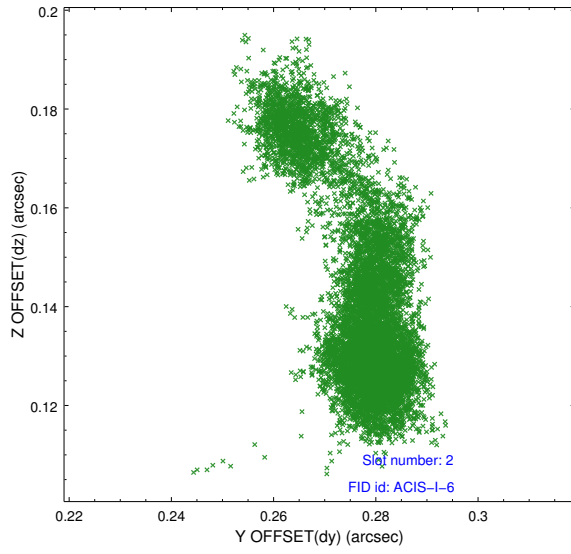
2.5.1 Slot 0



2.5.2 Slot 1



2.5.3 Slot 2



A Summary

A.1 Status

V&V Scientist	Jen Lauer
V&V Date (YYYY-MM-DD)	2019.10.11
V&V Edition	1
V&V Disposition and Status	OK
V&V Charge Time	35.07615373075

A.2 Comments

Optional chip S2 not included.