

V&V Reference Report

L2 ASCDS Version : 10.8.4

Observation 23179 - L2 Version 1
Chandra X-Ray Center

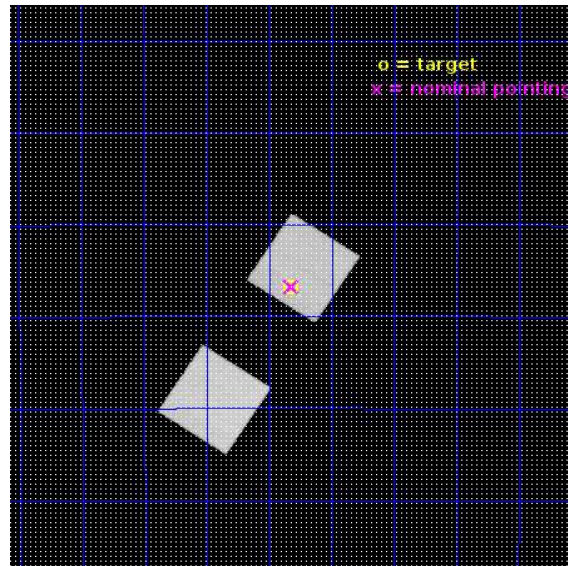
L2 Processing Date : Jun 9 2020

Contents

1	Front	2
2	OBI	3
2.1	OBI	3
2.1.1	Images	3
2.1.2	Bias	3
2.1.3	Parameters	4
2.1.4	Events	4
2.2	Compared Parameters	5
2.3	Aspect	6
2.4	Star Slots	9
2.4.1	Slot 3	9
2.4.2	Slot 4	10
2.4.3	Slot 5	11
2.4.4	Slot 6	12
2.4.5	Slot 7	13
2.5	FID Slots	14
2.5.1	Slot 0	14
2.5.2	Slot 1	15
2.5.3	Slot 2	16
A	Summary	17
A.1	Status	17
A.2	Comments	17

1 Front

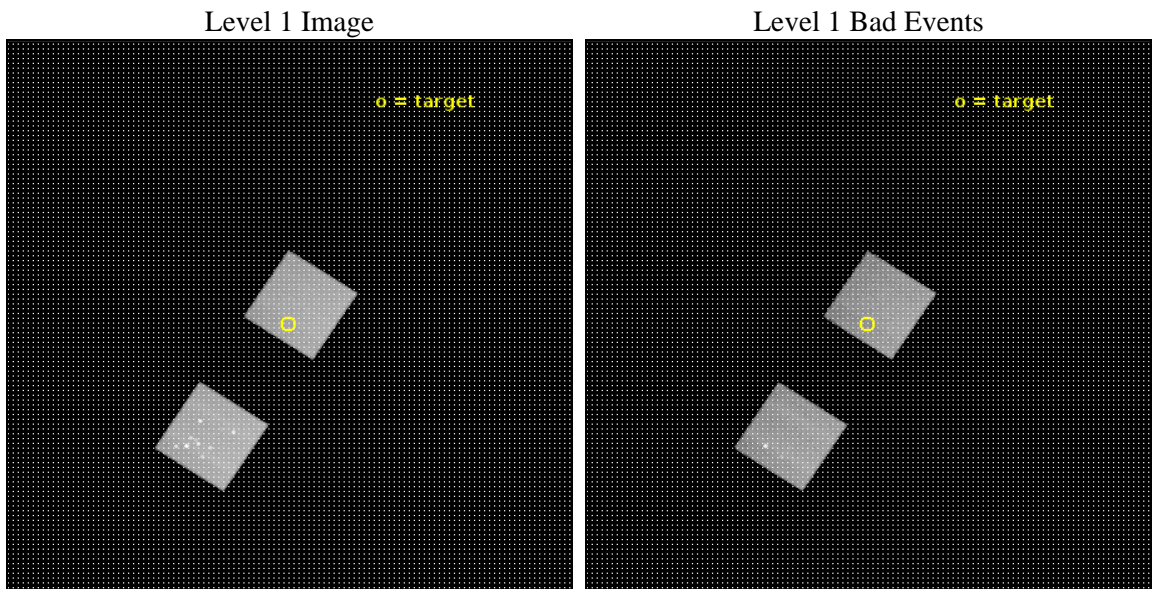
seq_num	300469	Sequence number
obs_id	23179	Observation id
title	Proof of concept for the detection of non-burning symbiotic binaries	
observer	Adrian Lucy	Principal investigator
object	Haro 1-10	Source name
dtcycle	0	
cycle	P	events from which exps? Prim/Second/Both
ra_targ	246.957333	Observer's specified target RA [deg]
dec_targ	-29.279294	Observer's specified target Dec [deg]
ra_nom	246.955558195	Nominal RA [deg]
dec_nom	-29.2792882497	Nominal Dec [deg]
roll_nom	302.984457371	Nominal Roll [deg]
revision	1	Processing version of data
ontime	23376.0	Sum of GTIs [s]
livetime	23060.531923289	Livetime [s]
ontime5	23376.0	Sum of GTIs [s]
ontime7	23376.0	Sum of GTIs [s]
l2events	233309	Number of level 2 events



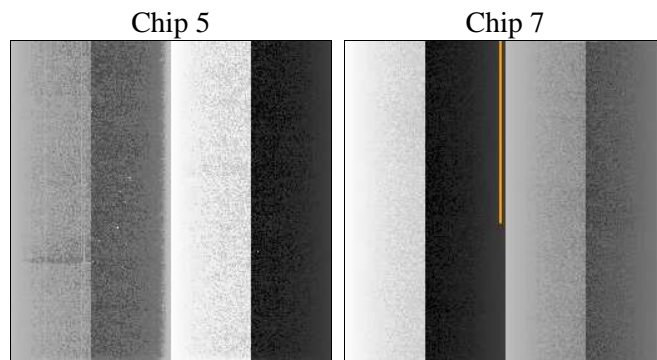
2 OBI

2.1 OBI

2.1.1 Images



2.1.2 Bias



2.1.3 Parameters

obi_num	2	Obi number	sched_exp_time	23455.013000	[s] Scheduled observation exposure time
ascdsver	10.8.4	Processing system revision	ontime	23376.0	Sum of GTIs [s]
caldsver	4.9.1	 	ontime5	23376.0	Sum of GTIs [s]
date	2020-06-09T08:39:59	Date and time of file creation	ontime7	23376.0	Sum of GTIs [s]
revision	1	Processing version of data	l1events	564346	Number of level 1 events

2.1.4 Events

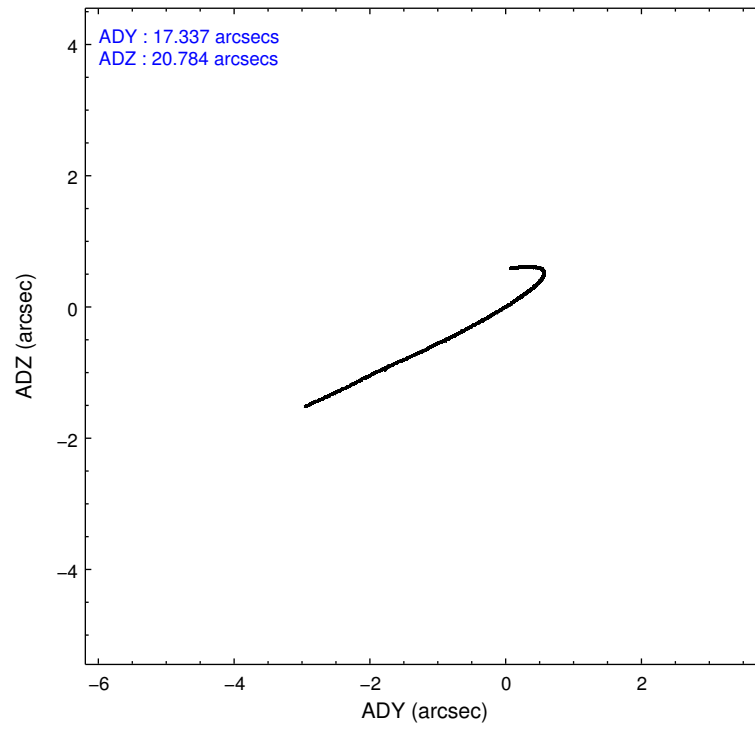
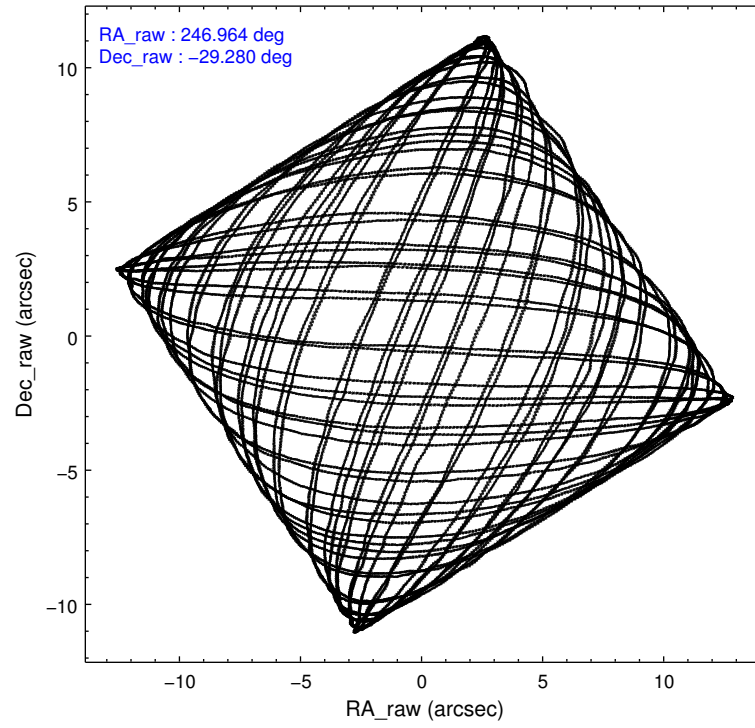
	ccd 5	ccd 7
level 1 events	326793	237553
rejected events	162426	135511
rejected %	49%	57%

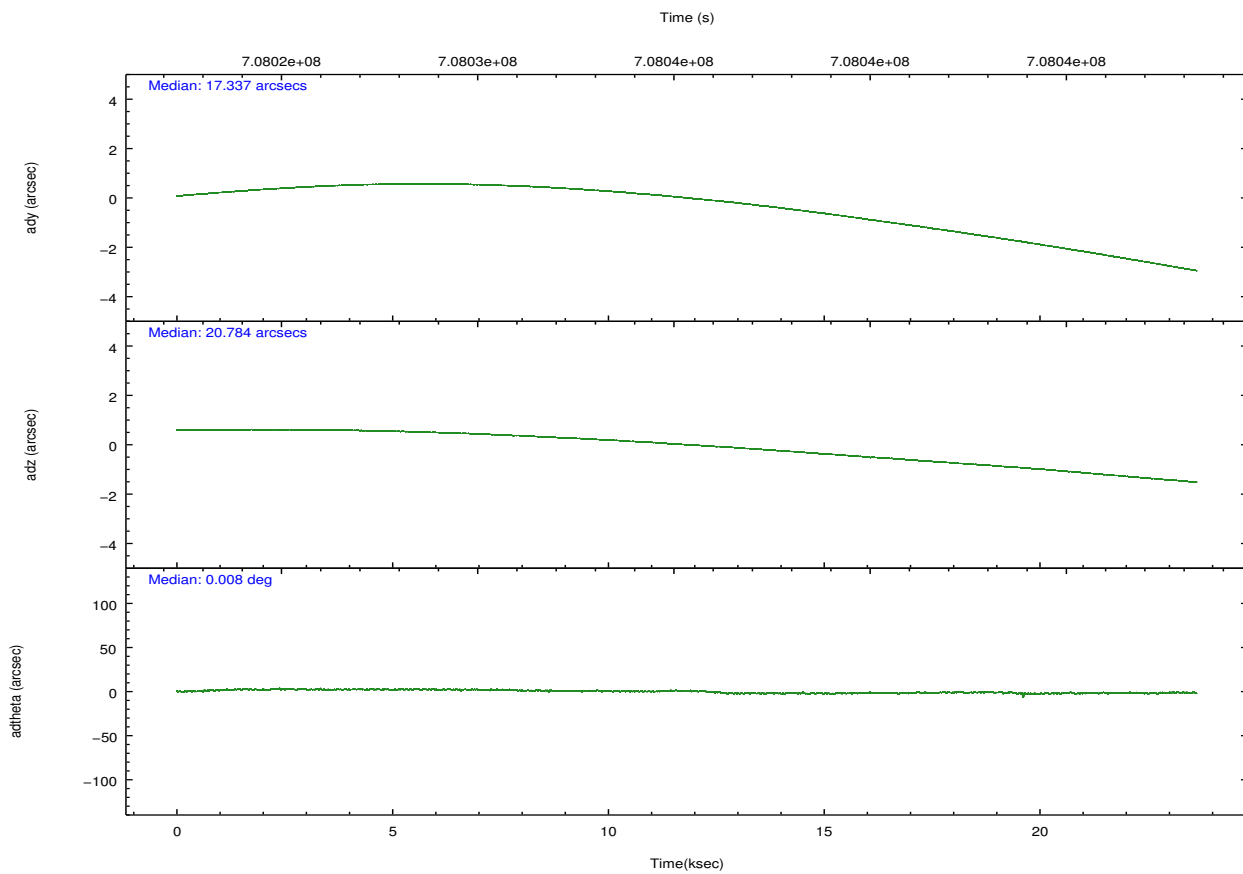
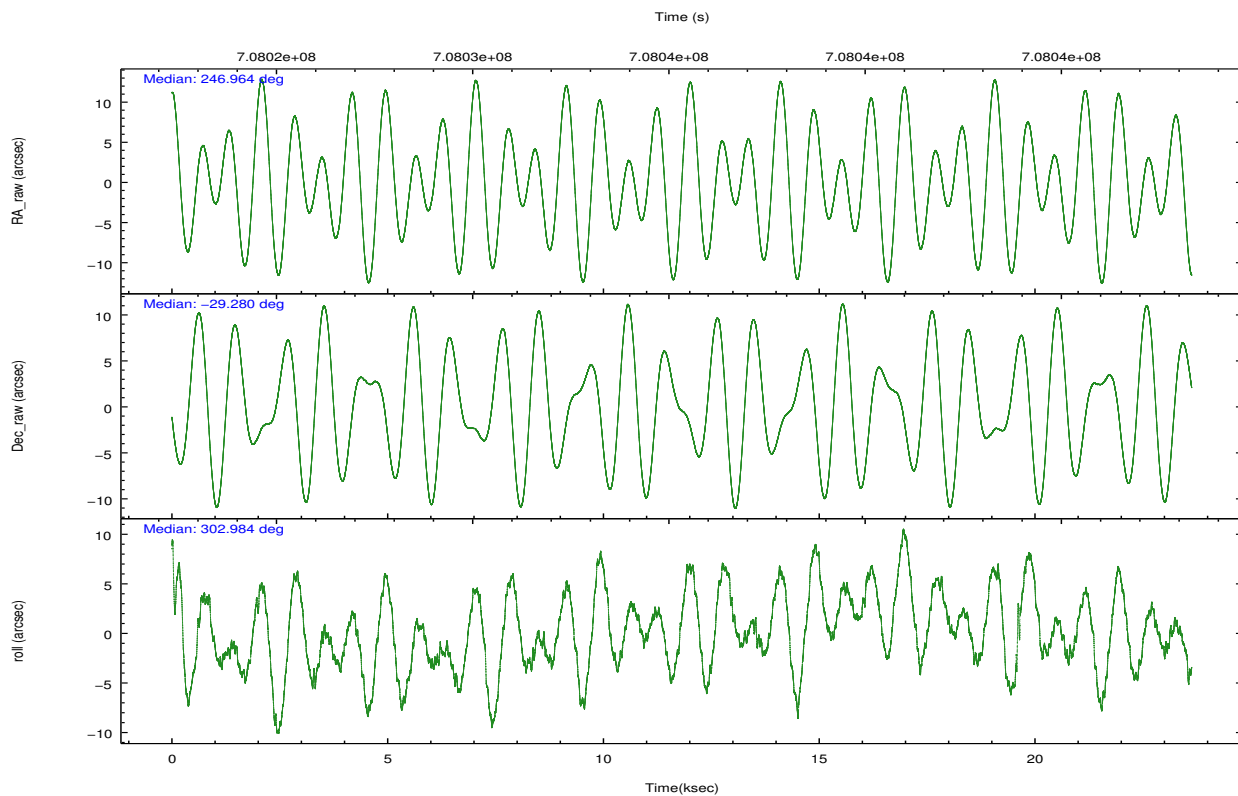
	ccd 5	ccd 7
grade 0 events	26797	8387
	8%	3%
grade 1 events	883	378
	0%	0%
grade 2 events	48757	21923
	14%	9%
grade 3 events	4742	7609
	1%	3%
grade 4 events	3887	7425
	1%	3%
grade 5 events	20491	22308
	6%	9%
grade 6 events	80237	56716
	24%	23%
grade 7 events	140999	112807
	43%	47%

2.2 Compared Parameters

Parameter	Planned	Actual	Parameter	Planned	Actual
Instrument	ACIS	ACIS	Obspar version number	8	8
Detector	ACIS-57	ACIS-57	Obspar file type	PREDICTED	ACTUAL
Grating	NONE	NONE	Obspar update status	NONE	UPDATED
Data mode	VFAINT	VFAINT	CCD I0 on	N	N
Observation mode	POINTING	POINTING	CCD I1 on	N	N
[deg] Pointing RA	246.936038	246.955558195	CCD I2 on	N	N
[deg] Pointing Dec	-29.267953	-29.2792882497	CCD I3 on	N	N
[deg] Pointing Roll	302.819183	302.984457371	CCD S0 on	N	N
[mm] SIM focus pos	-0.684267	-0.6828225247311905	CCD S1 on	O1	Y
[mm] SIM defocus	0	0.001444936568705701	CCD S2 on	N	N
[mm] SIM translation stage pos	-190.132523	-190.1425803651734	CCD S3 on	Y	Y
[mm] SIM translation stage offset	0	0.01005778216563158	CCD S4 on	N	N
[s] Observation start time (MET)	708023663.184000	708022716.70205	CCD S5 on	N	N
Observation start date	2020-06-08T17:13:14	2020-06-08T16:58:36	Number of optional ACIS chips dropped	0	0
[s] Observation end time (MET)	708047118.184000	708048223.3161	On-chip summing requested	N	N
Observation end date	2020-06-08T23:44:09	2020-06-09T00:03:43	Subarray requested	NONE	NONE
Read mode	TIMED	TIMED	Alternating exposures requested	N	N
			[s] Primary exposure time	0.000000	3

2.3 Aspect



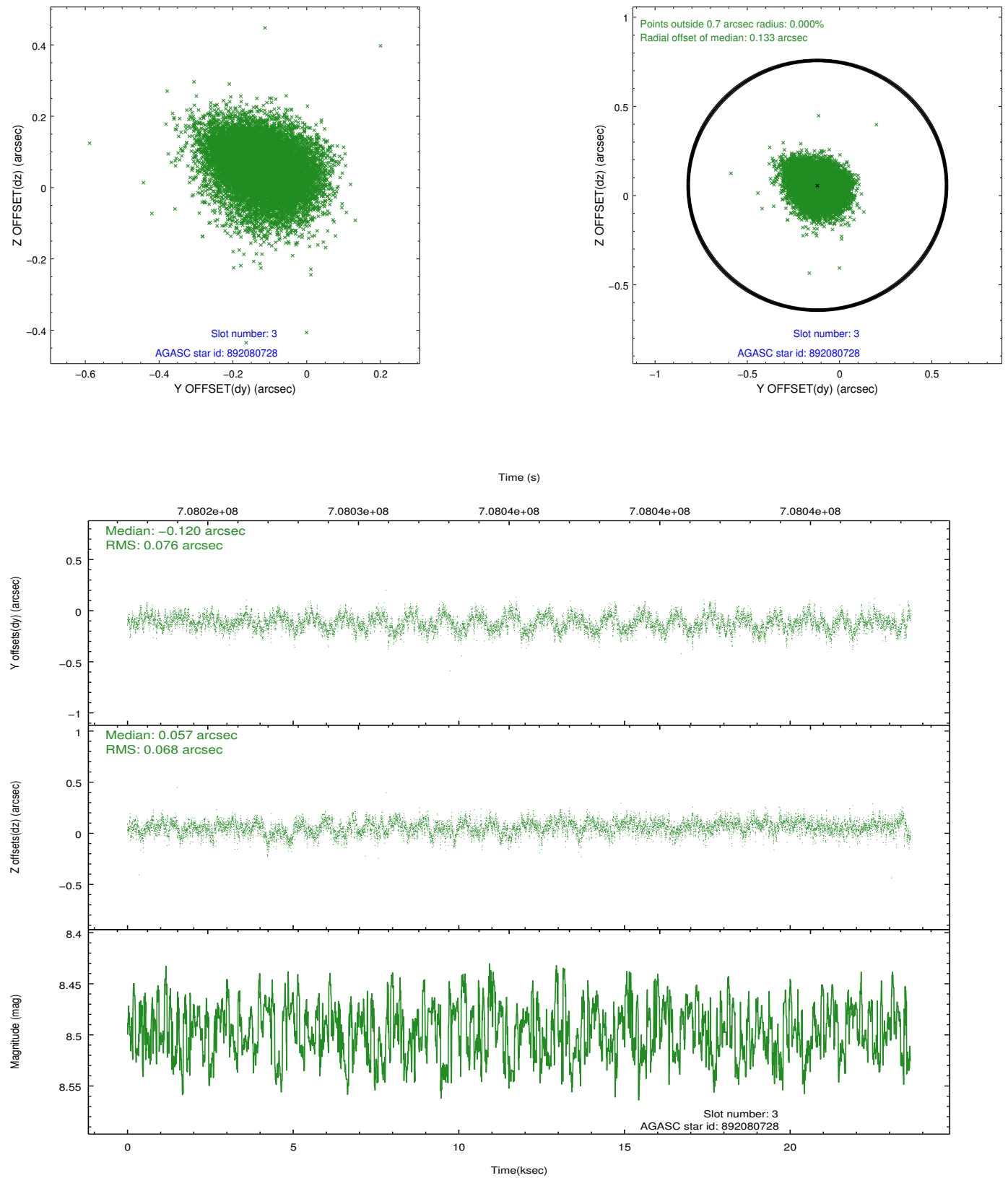


Slot Statistics

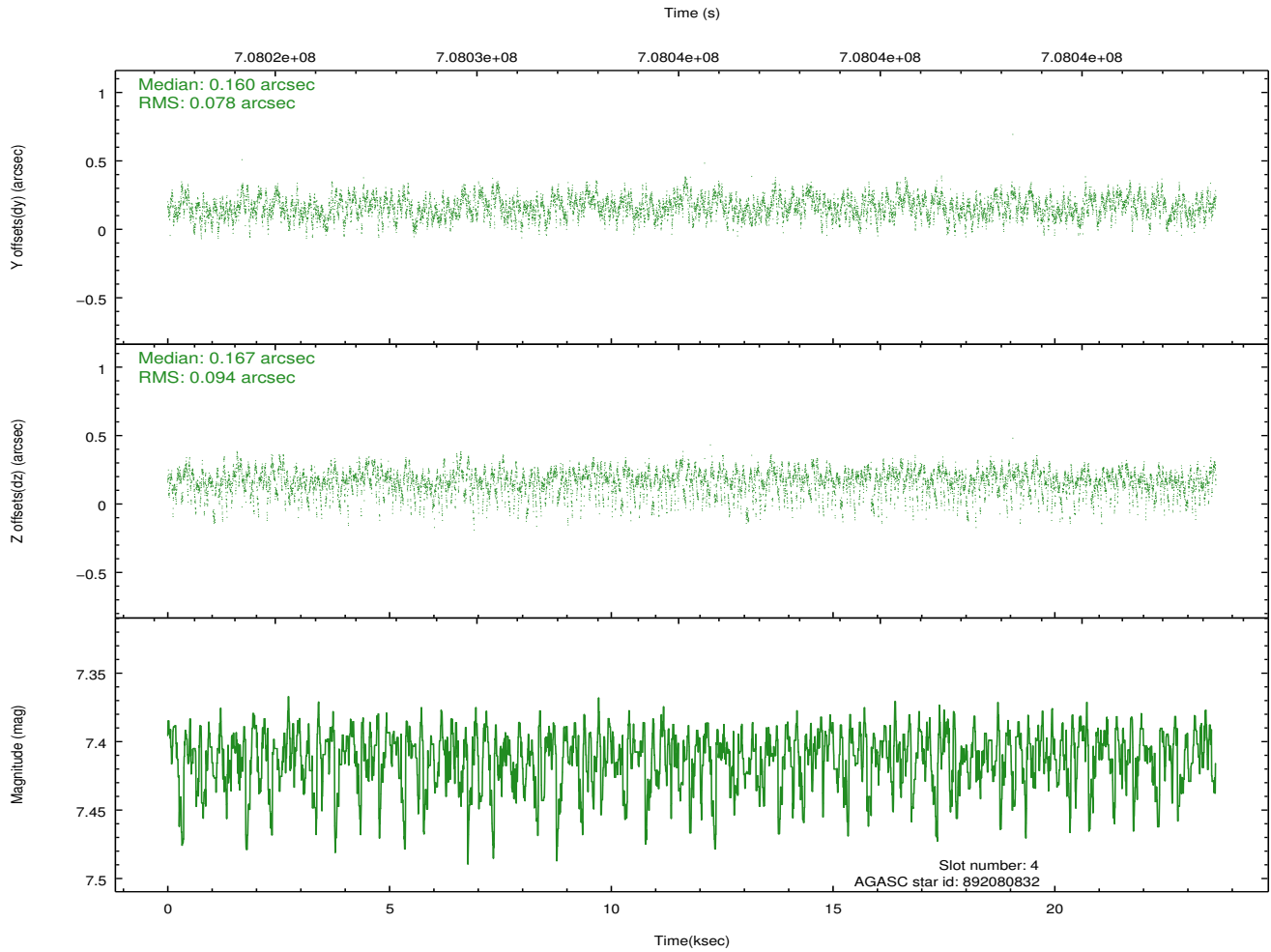
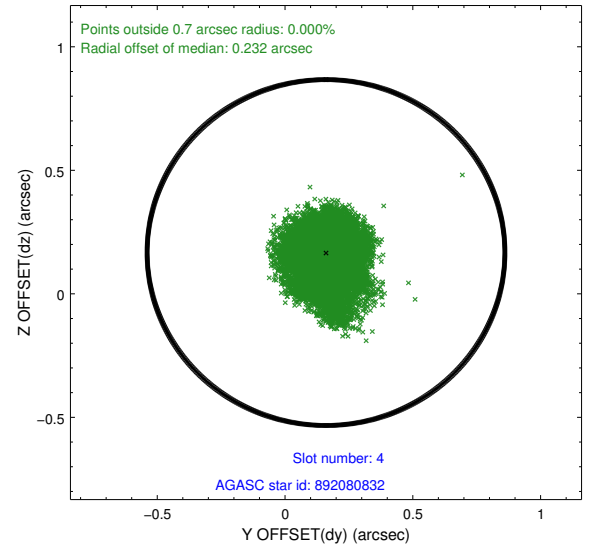
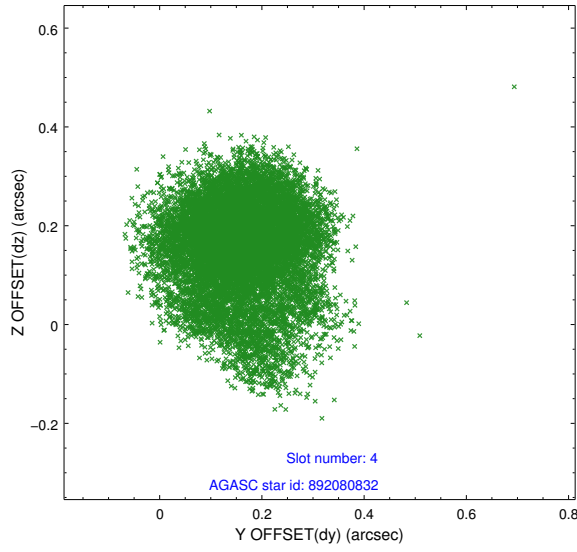
pt	status	used	id	mag	n_pts	frac_pts	med_dy	med_dz	dr1	dr2	ra	dec	mean_y	mea
0	FID		ACIS-S-2	7.10	5764	1.000	0.232	-0.116	0.037	0.069	0.000000	0.000000	-770.03	-1742
1	FID		ACIS-S-4	7.24	5763	1.000	0.103	-0.076	0.030	0.093	0.000000	0.000000	2143.48	165
2	FID		ACIS-S-5	7.22	5764	1.000	-0.365	0.202	0.030	0.042	0.000000	0.000000	-1822.89	160
3	GUIDE	used	892080728	8.50	11518	1.000	-0.120	0.057	0.108	0.174	246.849270	-29.369890	161.12	-427
4	GUIDE	used	892080832	7.41	11526	1.000	0.160	0.167	0.130	0.209	246.873669	-29.288263	-44.47	-204
5	GUIDE	used	892083376	7.92	11517	1.000	0.192	0.121	0.093	0.159	246.413081	-29.400448	-484.72	-1638
6	GUIDE	used	892209656	8.02	11525	1.000	-0.141	-0.152	0.140	0.213	247.674997	-29.483071	1912.03	1521
7	GUIDE	used	892214752	8.33	11521	1.000	-0.099	-0.163	0.126	0.210	247.359532	-29.477978	1356.91	704

2.4 Star Slots

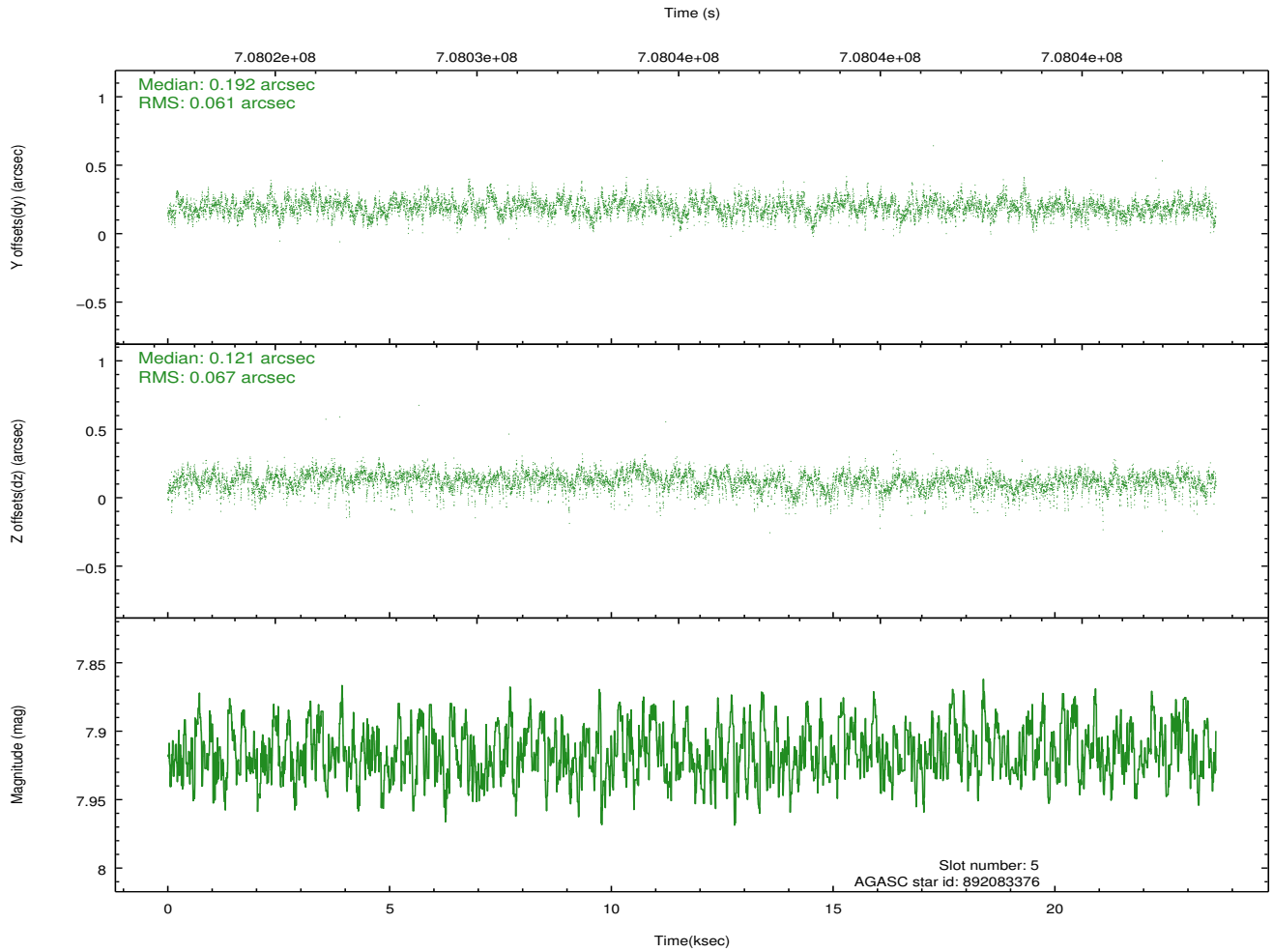
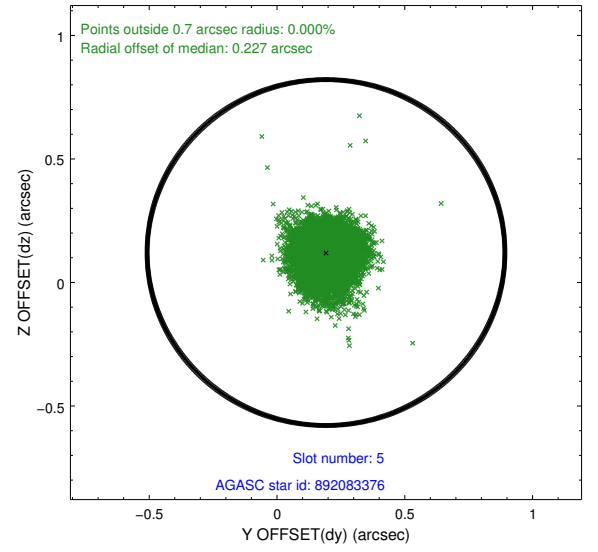
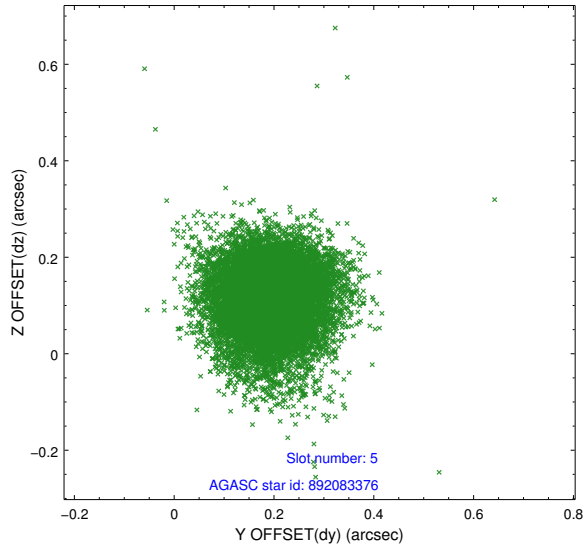
2.4.1 Slot 3



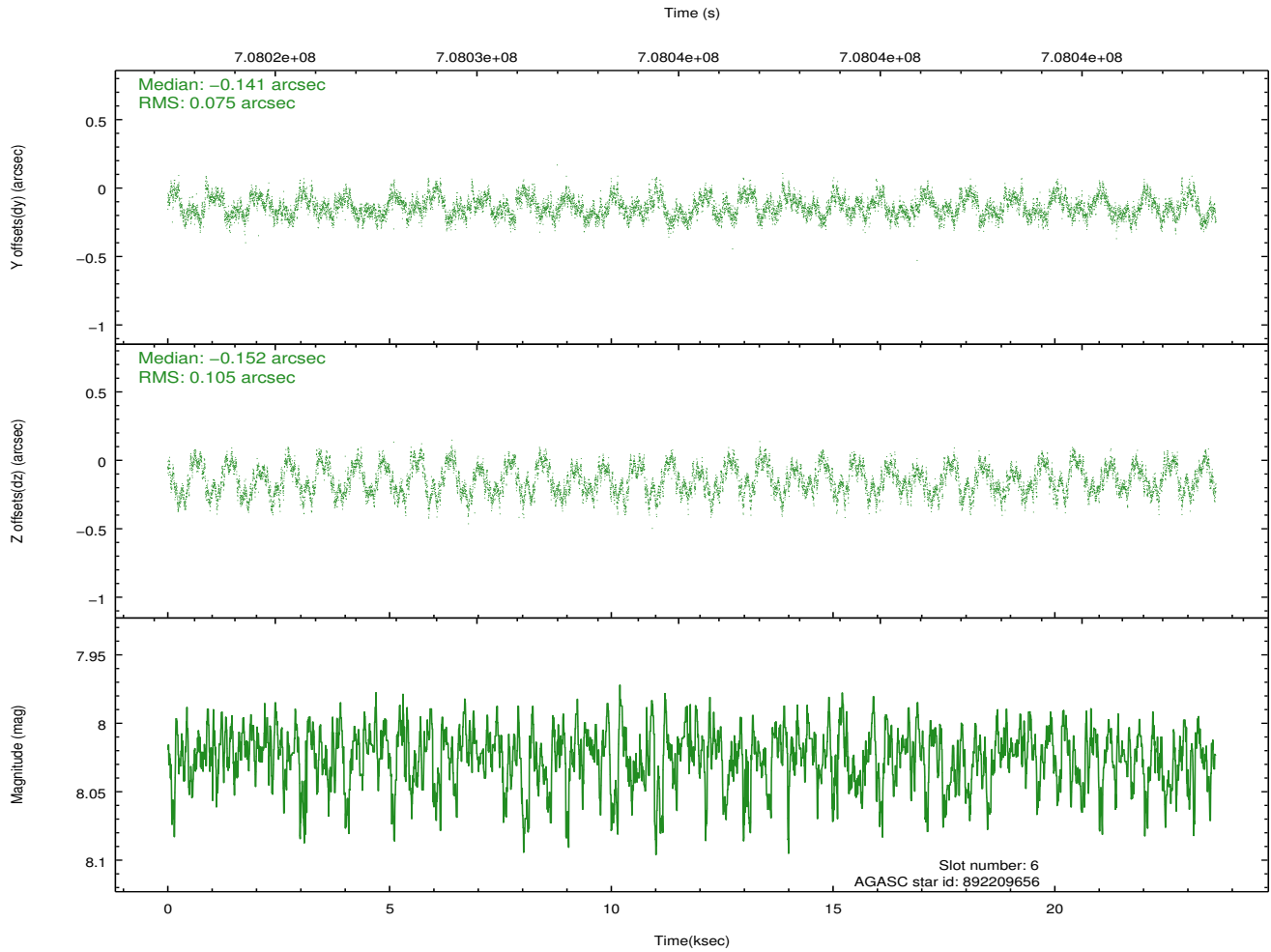
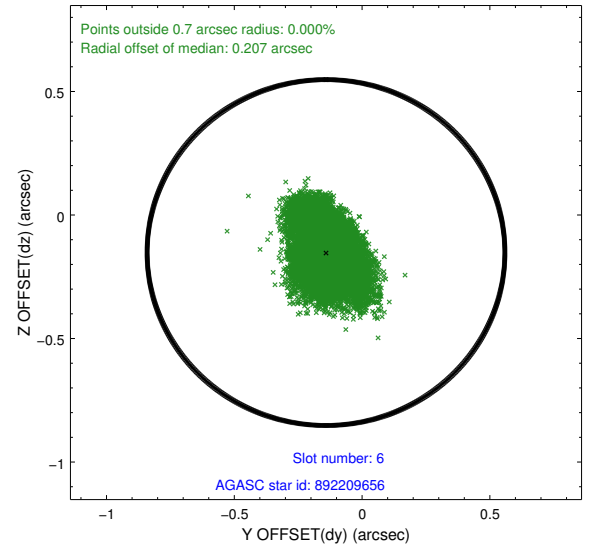
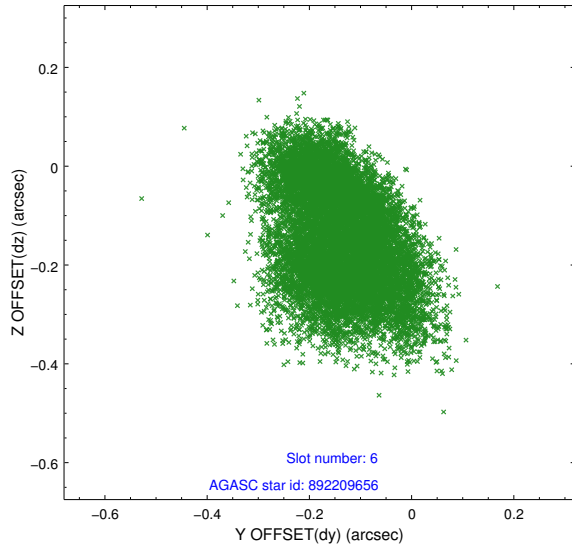
2.4.2 Slot 4



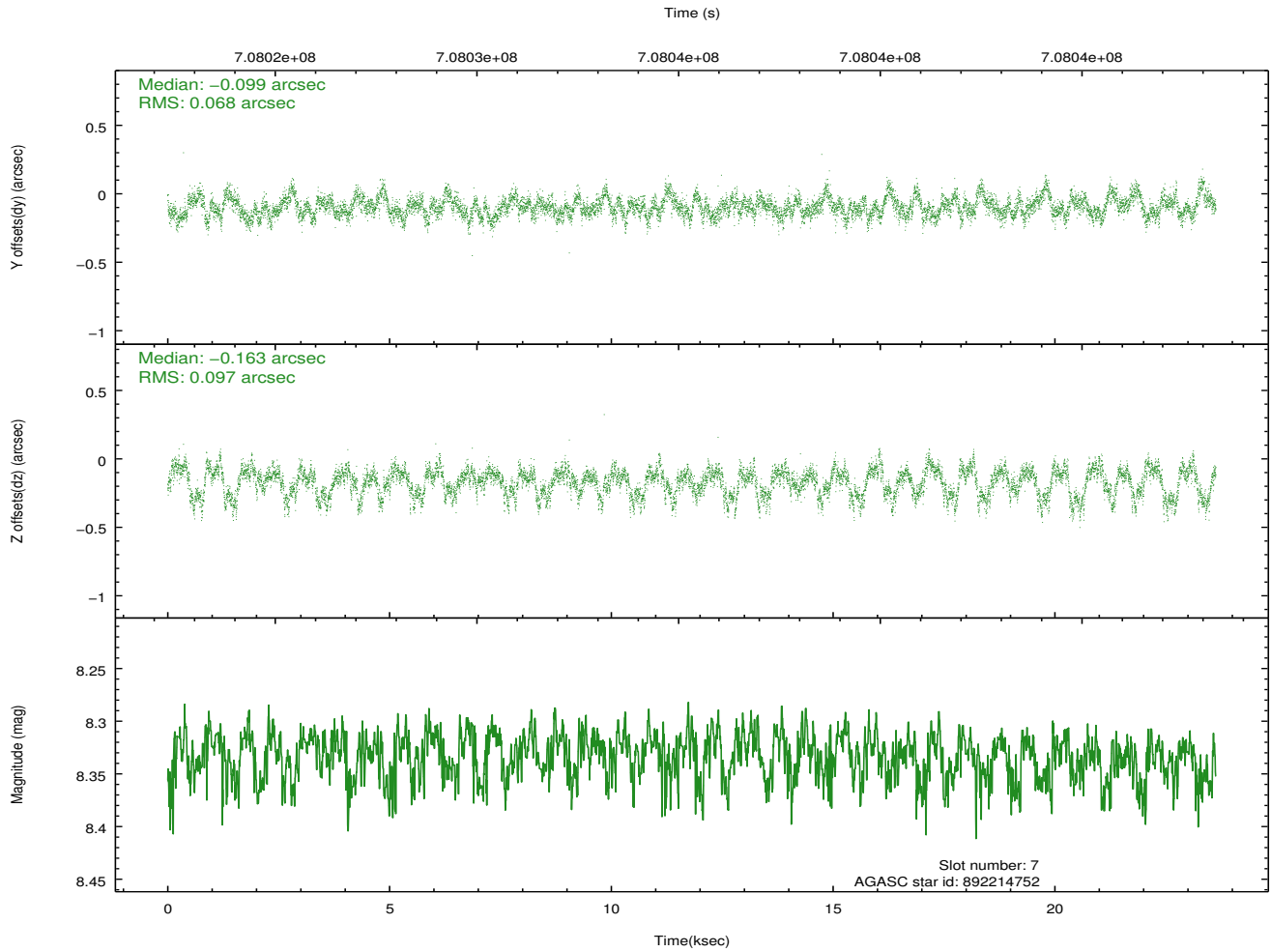
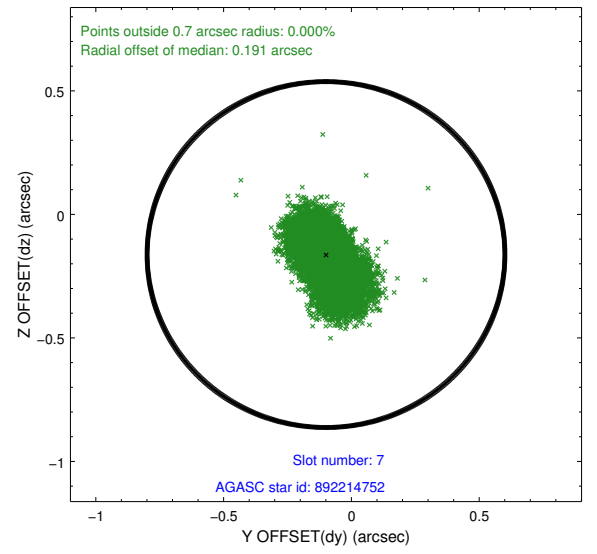
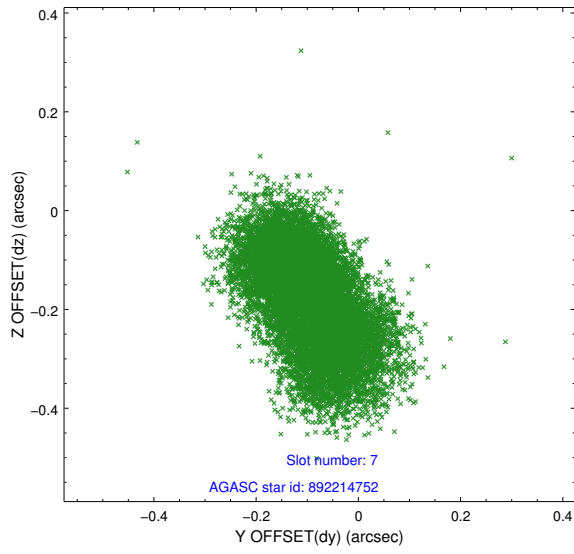
2.4.3 Slot 5



2.4.4 Slot 6

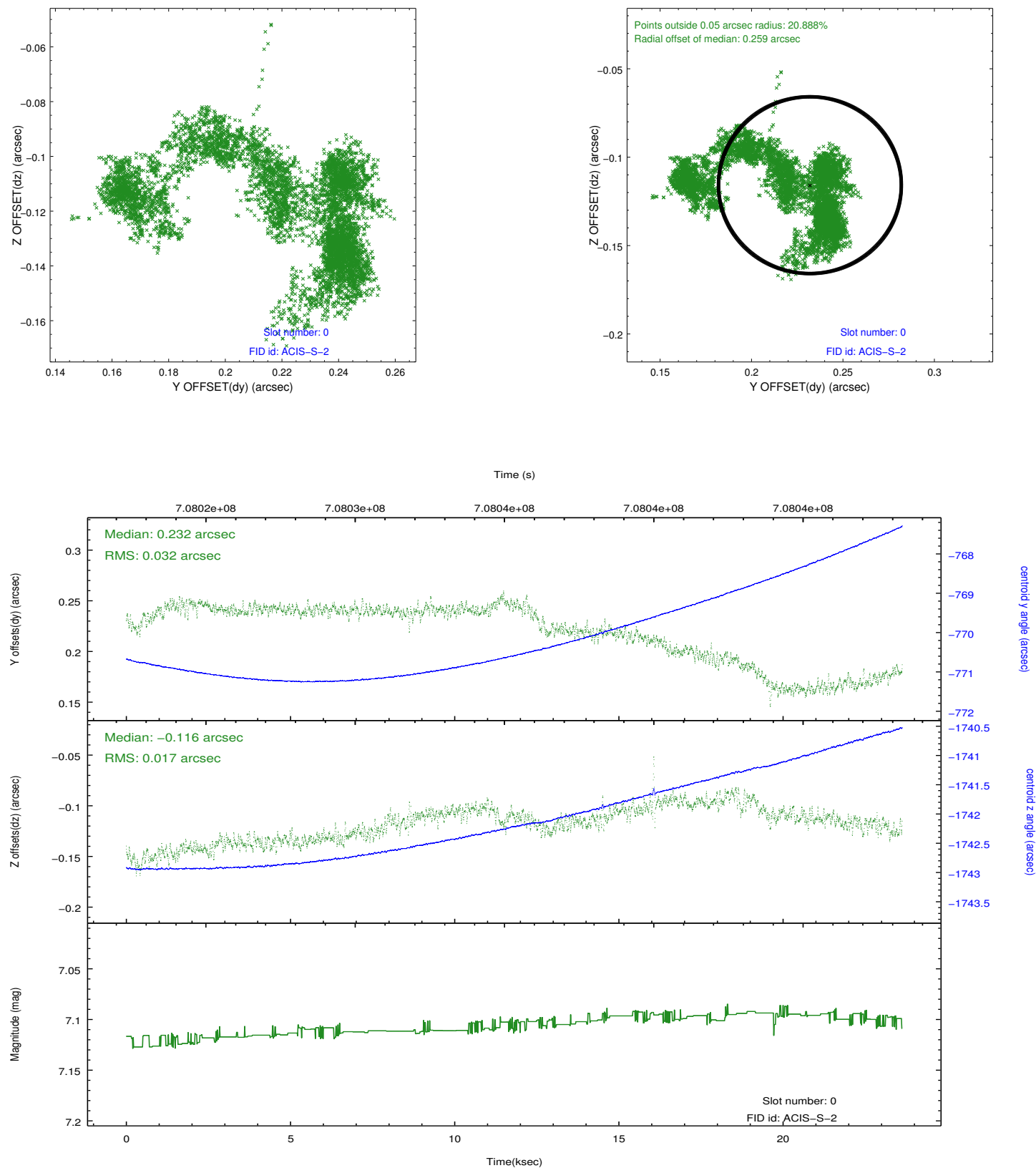


2.4.5 Slot 7

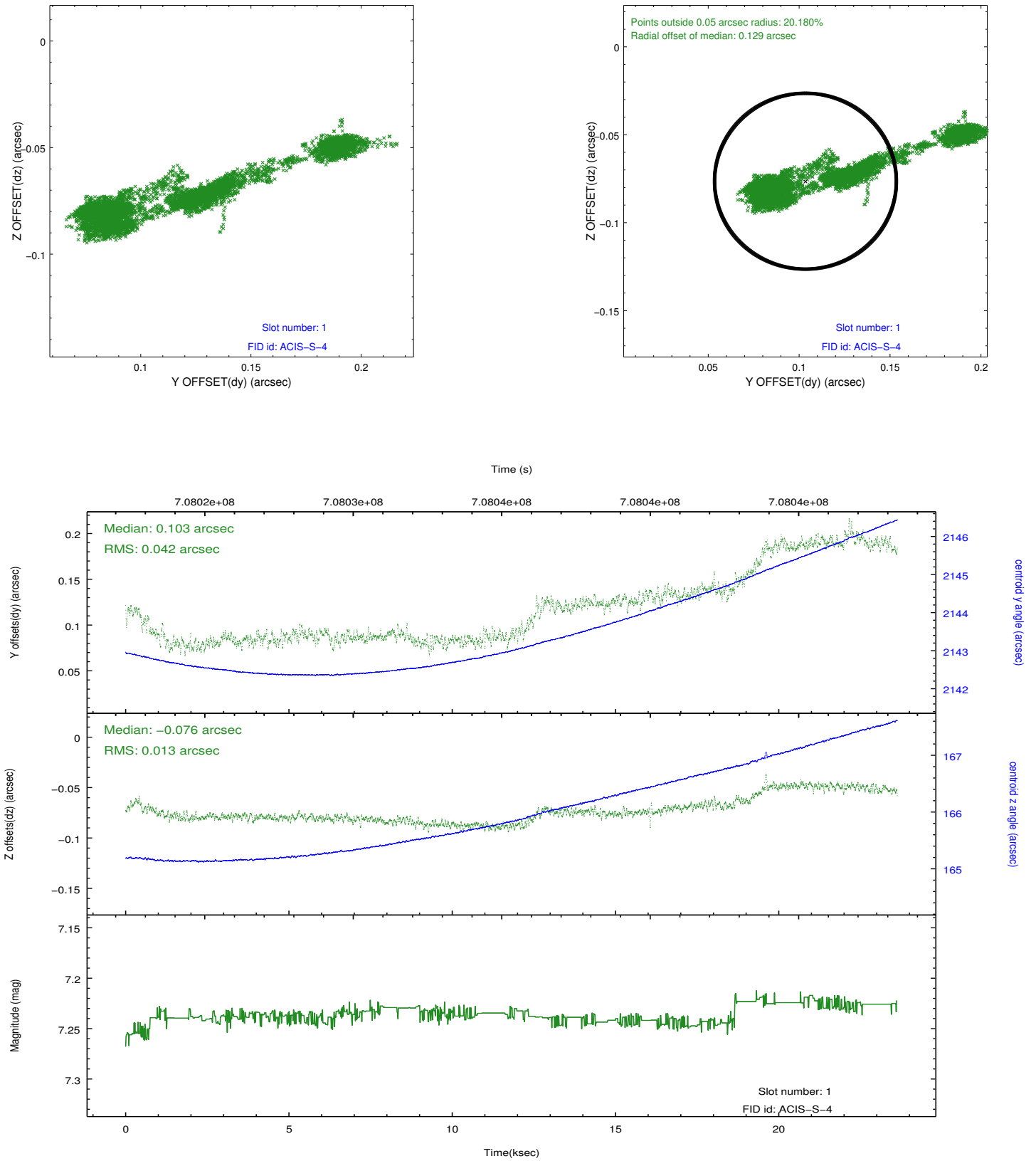


2.5 FID Slots

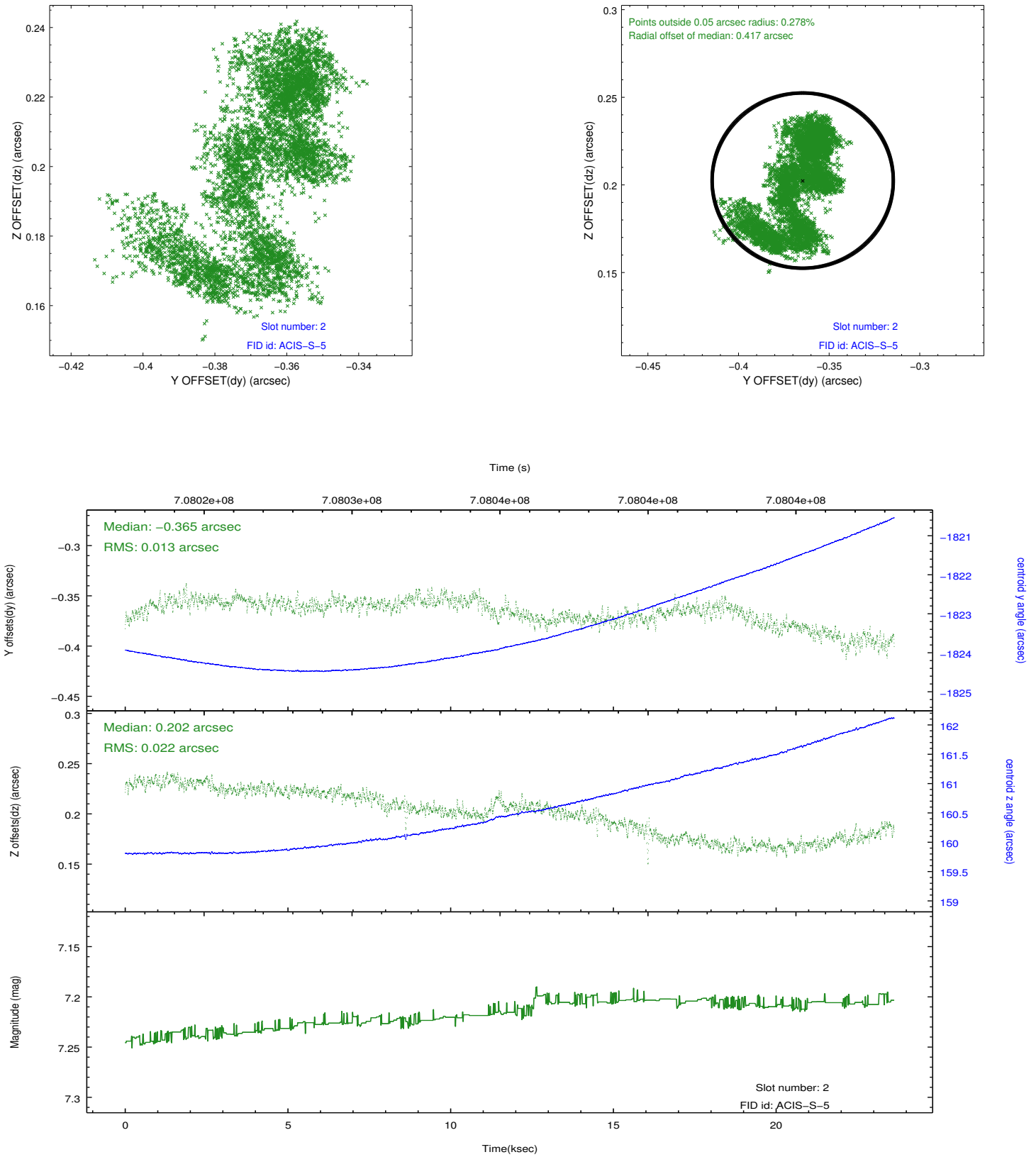
2.5.1 Slot 0



2.5.2 Slot 1



2.5.3 Slot 2



A Summary

A.1 Status

V&V Scientist	Jen Lauer
V&V Date (YYYY-MM-DD)	2020.06.09
V&V Edition	1
V&V Disposition and Status	OK
V&V Charge Time	23.376

A.2 Comments