

V&V Reference Report

L2 ASCDS Version : 10.8.4

Observation 23275 - L2 Version 1
Chandra X-Ray Center

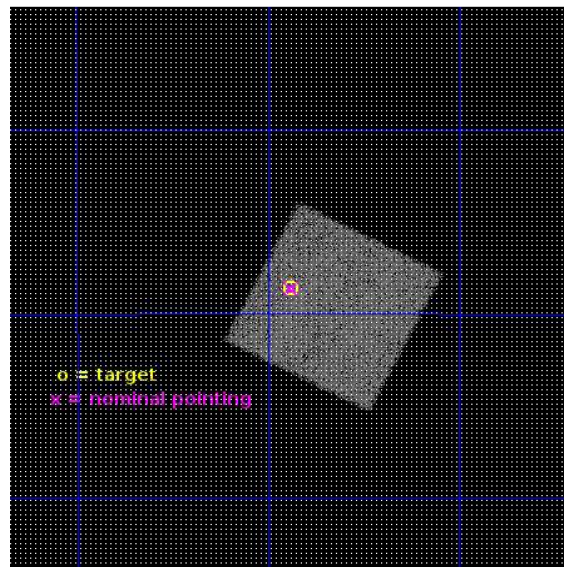
L2 Processing Date : Jun 11 2020

Contents

1	Front	2
2	OBI	3
2.1	OBI	3
2.1.1	Images	3
2.1.2	Bias	3
2.1.3	Parameters	4
2.1.4	Events	4
2.2	Compared Parameters	5
2.3	Aspect	6
2.4	Star Slots	9
2.4.1	Slot 3	9
2.4.2	Slot 4	10
2.4.3	Slot 5	11
2.4.4	Slot 6	12
2.4.5	Slot 7	13
2.5	FID Slots	14
2.5.1	Slot 0	14
2.5.2	Slot 1	15
2.5.3	Slot 2	16
A	Summary	17
A.1	Status	17
A.2	Comments	17

1 Front

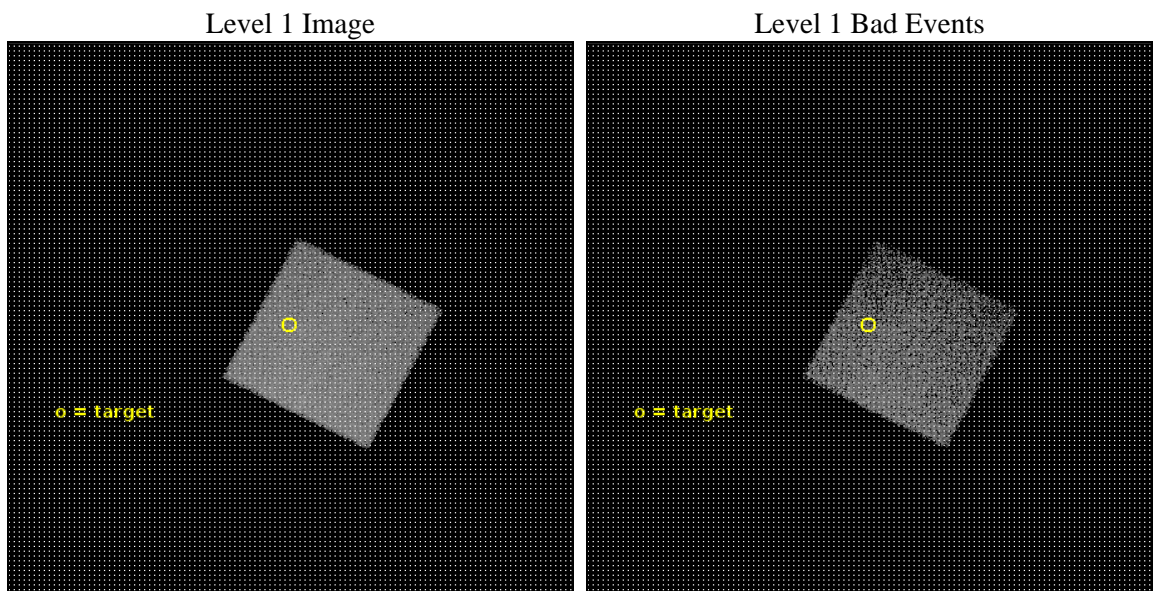
seq_num	201350	Sequence number
obs_id	23275	Observation id
title	Stellar activity with TESS and Chandra	Proposal title
observer	Hans Guenther	Principal investigator
object	2RXS J181151.6-480844	Source name
dtcycle	0	
cycle	P	events from which exps? Prim/Second/Both
ra_targ	272.969452	Observer's specified target RA [deg]
dec_targ	-48.14296	Observer's specified target Dec [deg]
ra_nom	272.969496688	Nominal RA [deg]
dec_nom	-48.1439088795	Nominal Dec [deg]
roll_nom	27.1058754858	Nominal Roll [deg]
revision	1	Processing version of data
ontime	10098.0	Sum of GTIs [s]
livetime	9961.7236208666	Livetime [s]
ontime7	10098.0	Sum of GTIs [s]
l2events	44252	Number of level 2 events



2 OBI

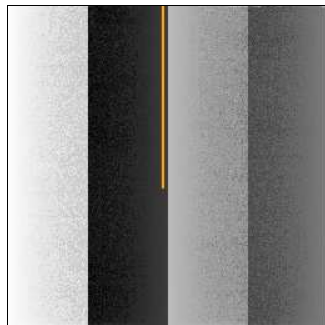
2.1 OBI

2.1.1 Images



2.1.2 Bias

Chip 7



2.1.3 Parameters

obi_num	0	Obi number	sched_exp_time	10007.232000	[s] Scheduled observation exposure time
ascdsver	10.8.4	Processing system revision	ontime	10098.0	Sum of GTIs [s]
caldsver	4.9.1	 	ontime7	10098.0	Sum of GTIs [s]
date	2020-06-12T02:08:04	Date and time of file creation	l1events	105778	Number of level 1 events
revision	1	Processing version of data			

2.1.4 Events

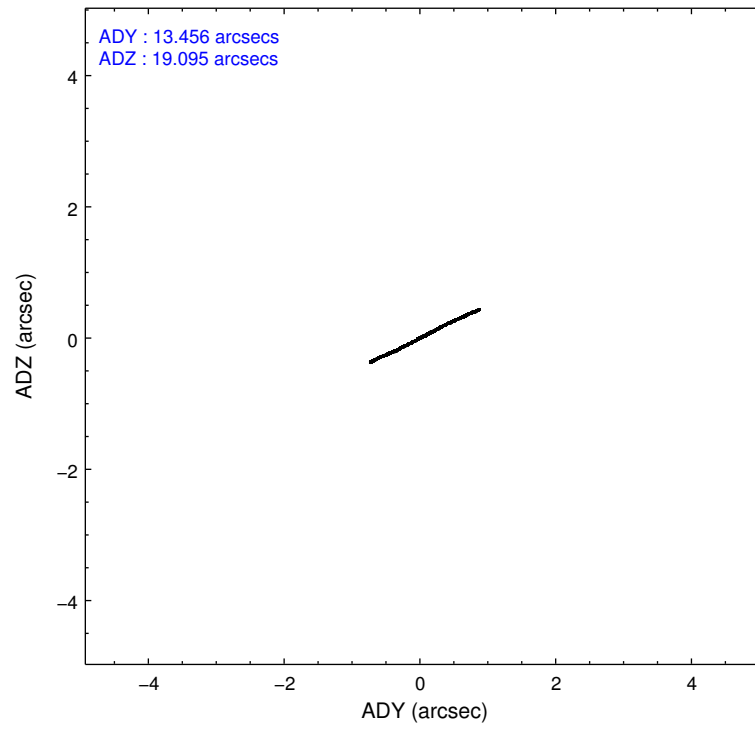
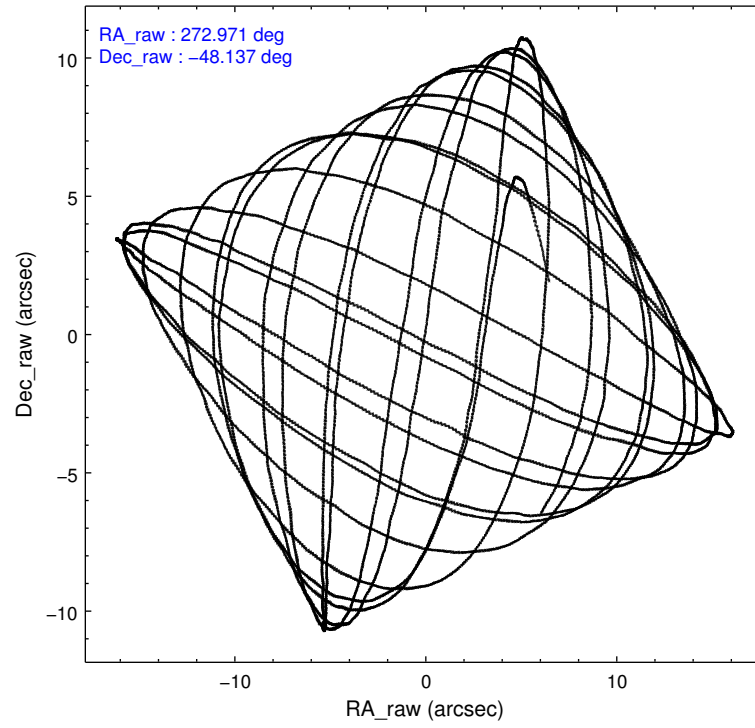
	ccd 7
level 1 events	105778
rejected events	60096
rejected %	56%

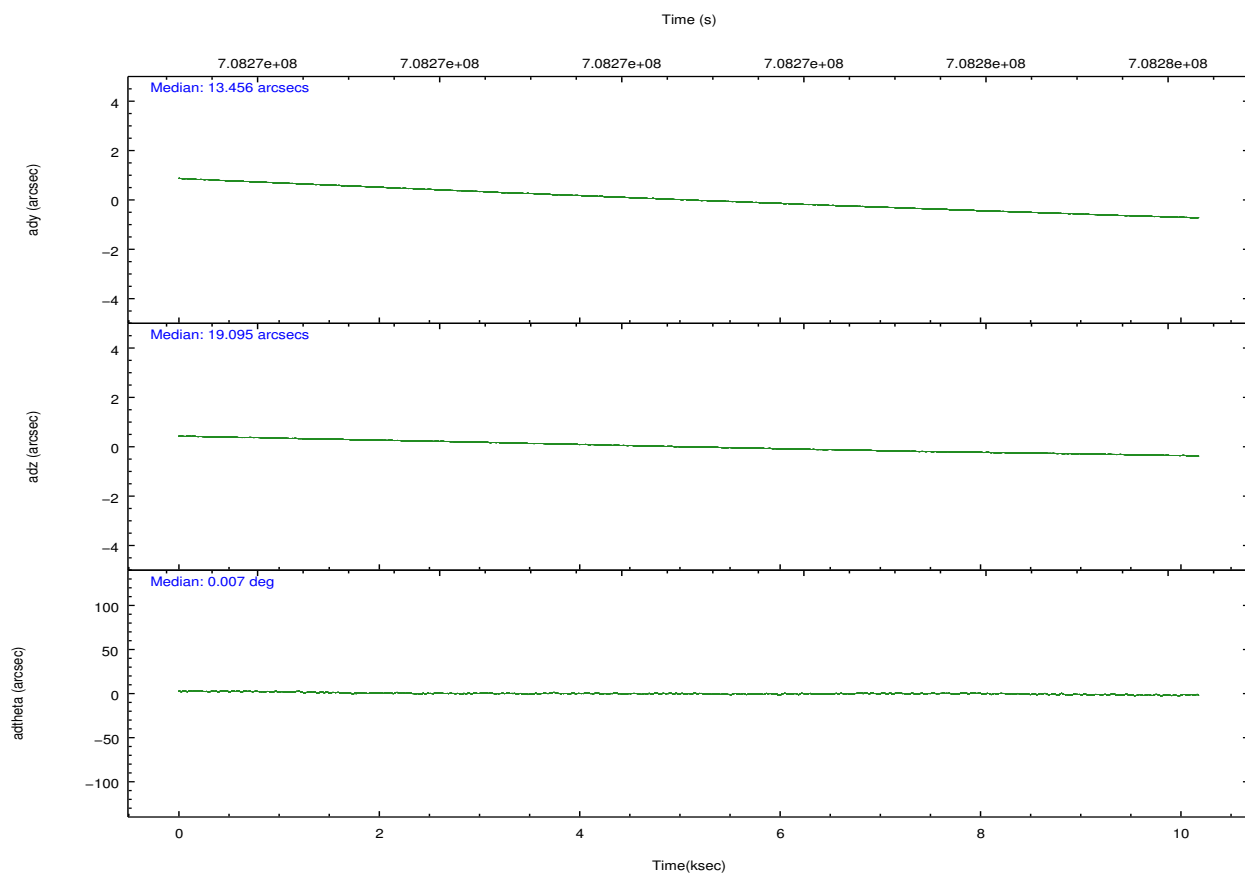
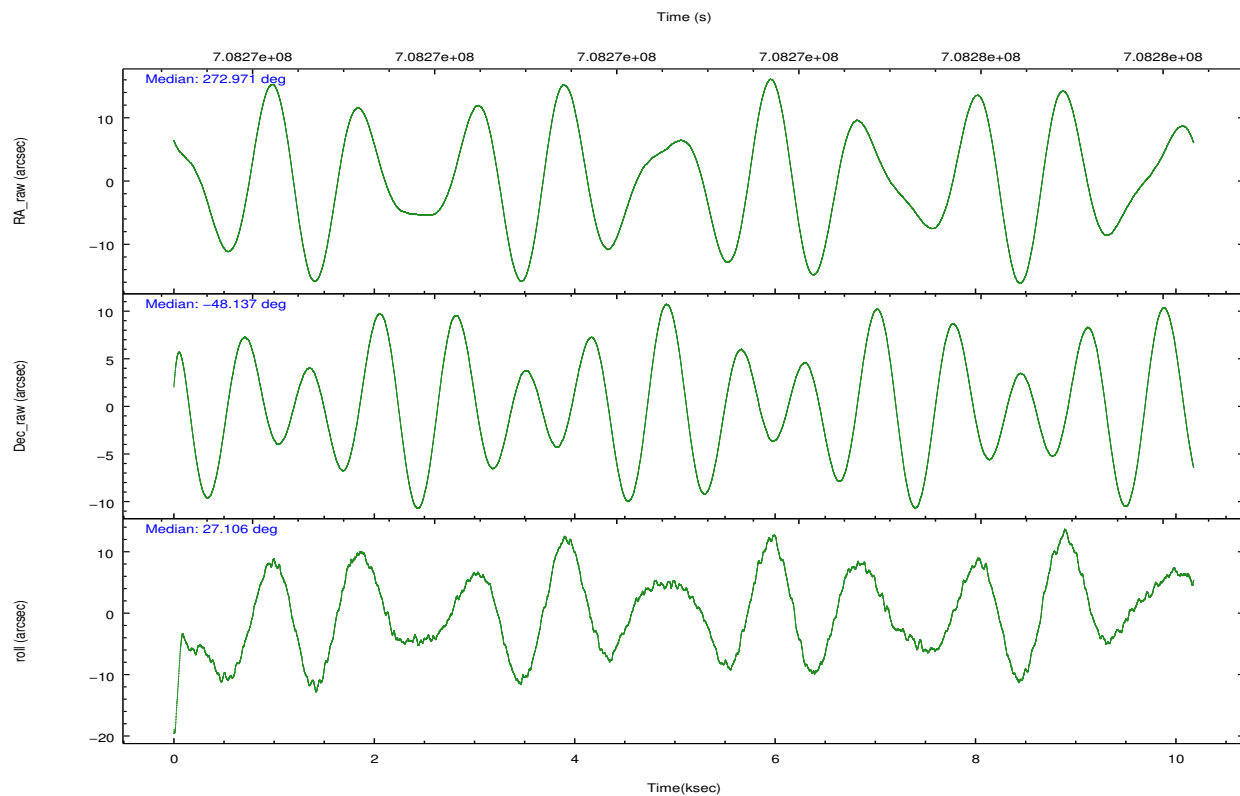
	ccd 7
grade 0 events	3789
	3%
grade 1 events	162
	0%
grade 2 events	9409
	8%
grade 3 events	3519
	3%
grade 4 events	3447
	3%
grade 5 events	9602
	9%
grade 6 events	25530
	24%
grade 7 events	50320
	47%

2.2 Compared Parameters

Parameter	Planned	Actual	Parameter	Planned	Actual
Instrument	ACIS	ACIS	Obspar version number	8	8
Detector	ACIS-7	ACIS-7	Obspar file type	PREDICTED	ACTUAL
Grating	NONE	NONE	Obspar update status	NONE	UPDATED
Data mode	VFAINT	VFAINT	Number of optional ACIS chips dropped	0	0
Observation mode	POINTING	POINTING	On-chip summing requested	N	N
[deg] Pointing RA	272.949076	272.969496688	Subarray requested	NONE	NONE
[deg] Pointing Dec	-48.160810	-48.1439088795	Alternating exposures requested	N	N
[deg] Pointing Roll	26.940102	27.1058754858	[s] Primary exposure time	0.000000	3
[mm] SIM focus pos	-0.684267	-0.6828225247311905			
[mm] SIM defocus	0	0.001444936568705701			
[mm] SIM translation stage pos	-190.132523	-190.1425803651734			
[mm] SIM translation stage offset	0	0.01005778216563158			
[s] Observation start time (MET)	708267813.184000	708266967.04193			
Observation start date	2020-06-11T13:02:24	2020-06-11T12:49:27			
[s] Observation end time (MET)	708277820.184000	708279156.85518			
Observation end date	2020-06-11T15:49:11	2020-06-11T16:12:36			
Read mode	TIMED	TIMED			

2.3 Aspect



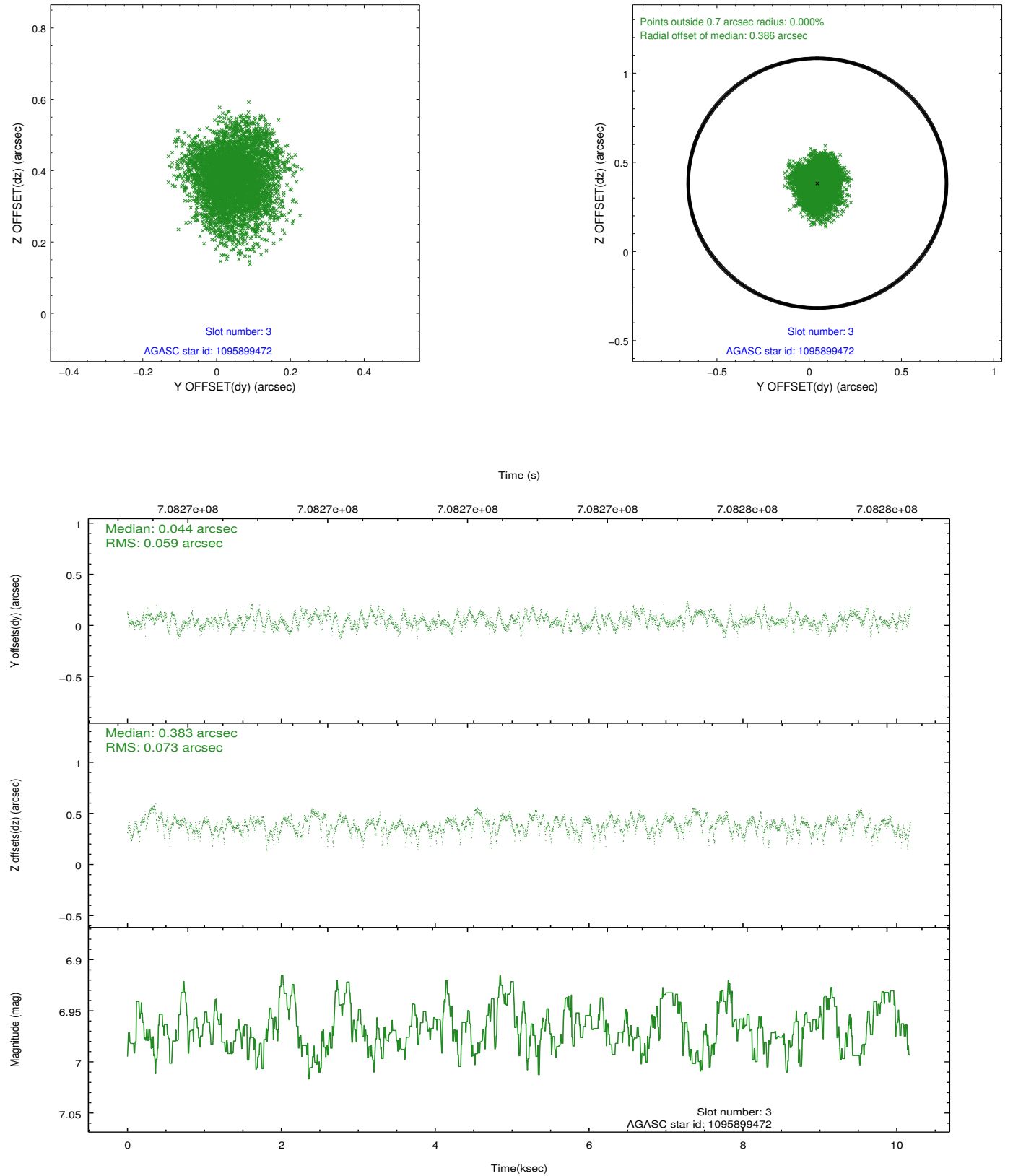


Slot Statistics

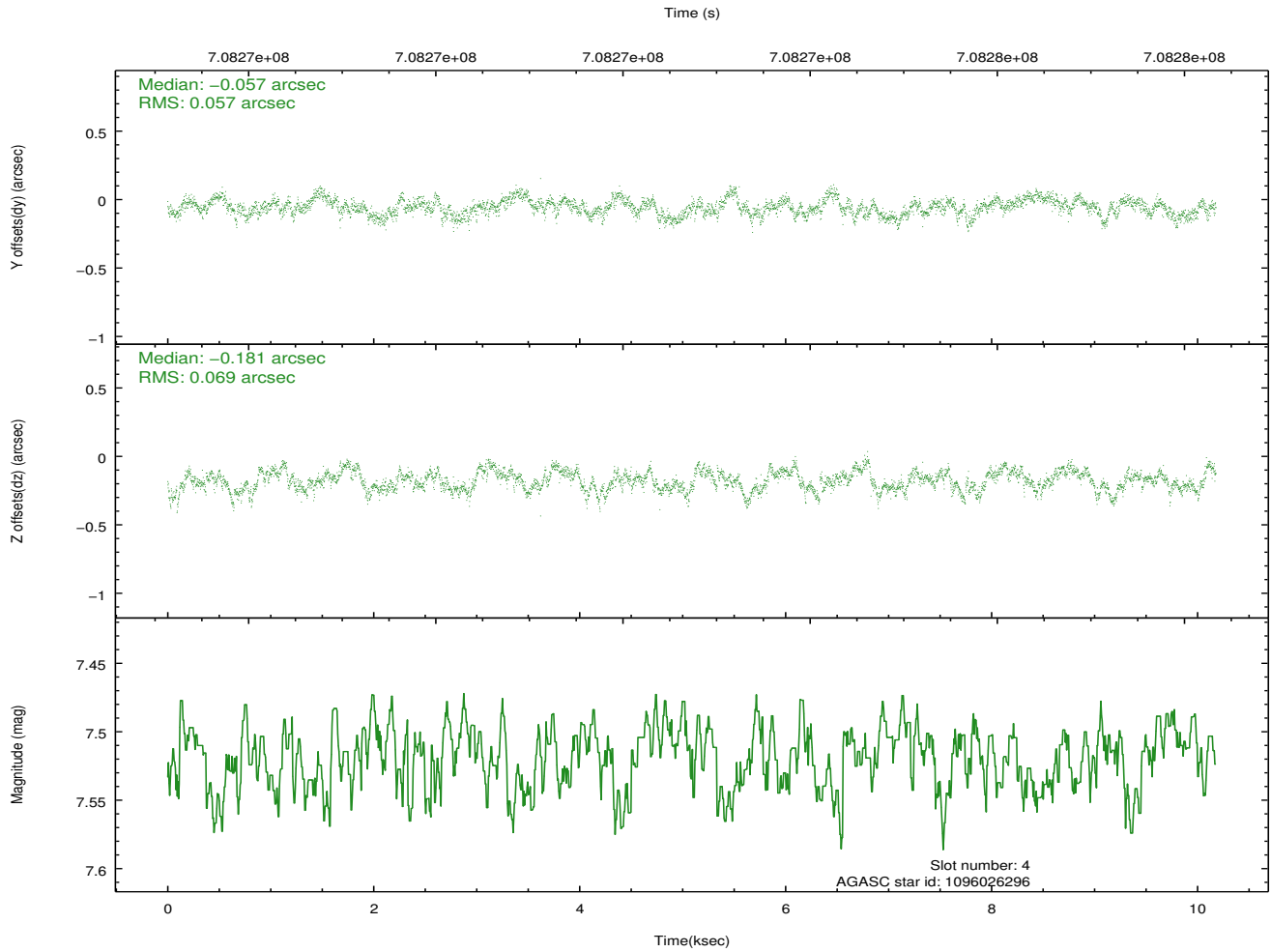
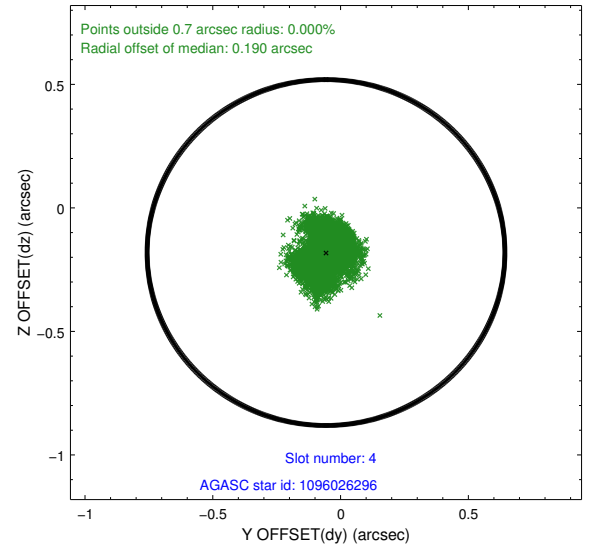
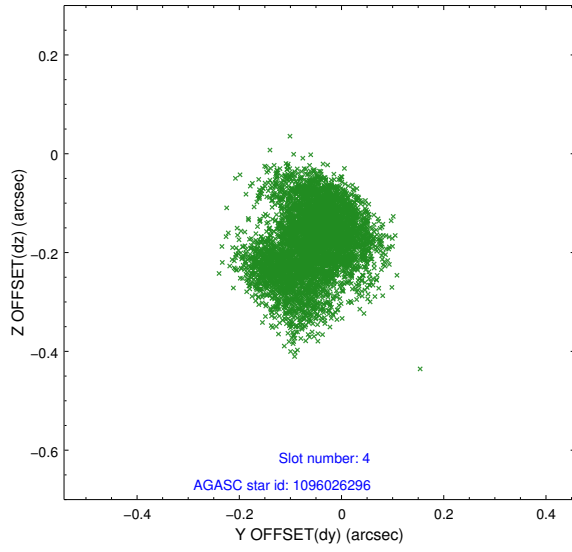
pt	status	used	id	mag	n_pts	frac_pts	med_dy	med_dz	dr1	dr2	ra	dec	mean_y	mea
0	FID		ACIS-S-2	7.11	2483	1.000	0.211	-0.093	0.024	0.039	0.000000	0.000000	-766.53	-1740
1	FID		ACIS-S-4	7.25	2483	1.000	0.134	-0.075	0.018	0.032	0.000000	0.000000	2146.79	166
2	FID		ACIS-S-5	7.23	2482	1.000	-0.375	0.178	0.017	0.038	0.000000	0.000000	-1818.94	162
3	GUIDE	used	1095899472	6.97	4964	1.000	0.044	0.383	0.101	0.160	272.764886	-48.303947	-627.26	-261
4	GUIDE	used	1096026296	7.52	4965	1.000	-0.057	-0.181	0.099	0.146	273.238462	-47.768529	1262.98	939
5	GUIDE	used	1096029880	8.06	4965	1.000	-0.032	-0.164	0.091	0.142	273.031333	-47.379813	1452.51	2414
6	GUIDE	used	1096032584	7.18	4965	1.000	0.147	0.170	0.094	0.157	273.611022	-47.954419	1756.54	-66
7	GUIDE	used	1095898504	6.72	4963	1.000	-0.097	-0.208	0.124	0.190	272.468083	-47.614188	-150.83	2278

2.4 Star Slots

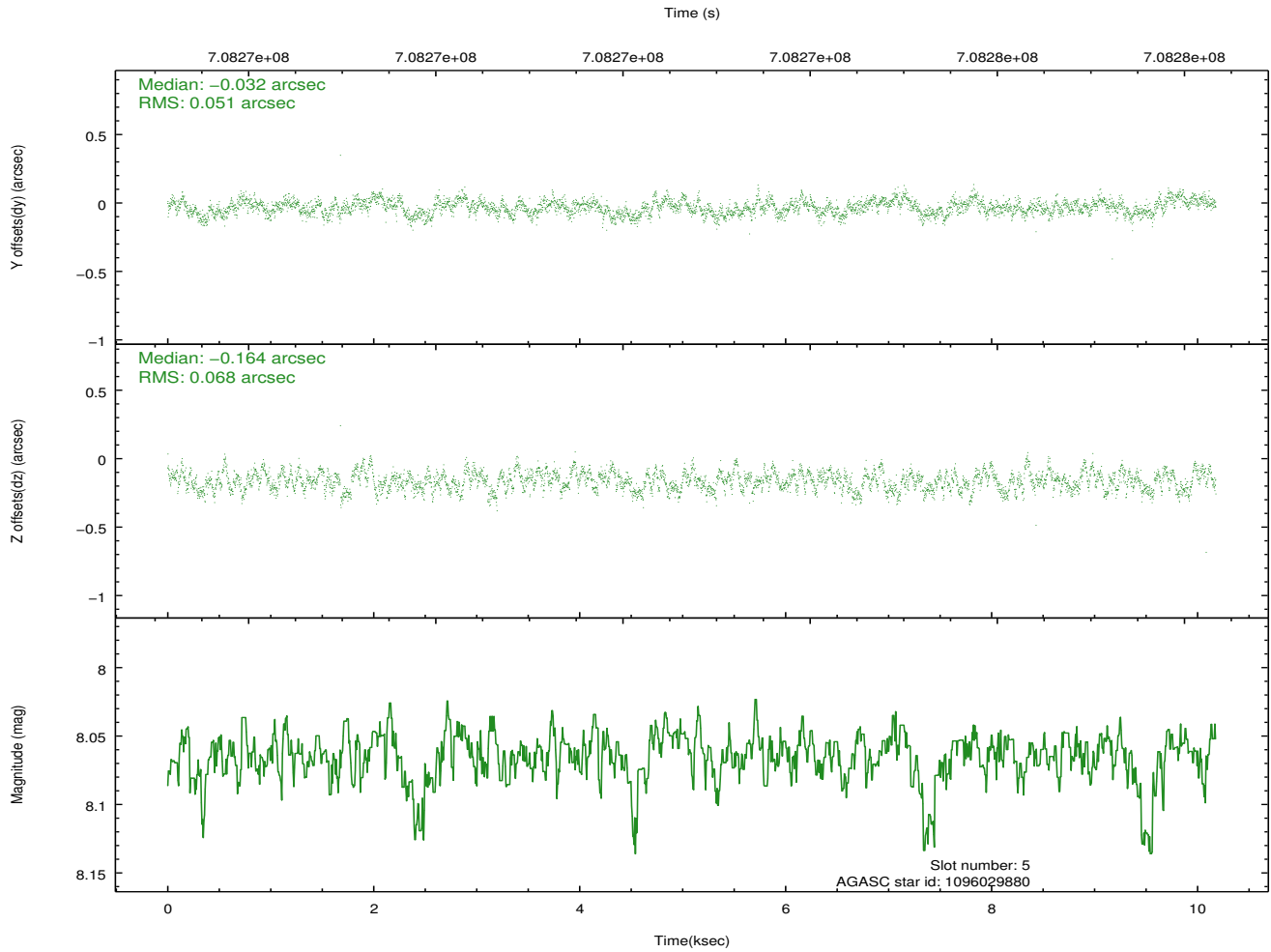
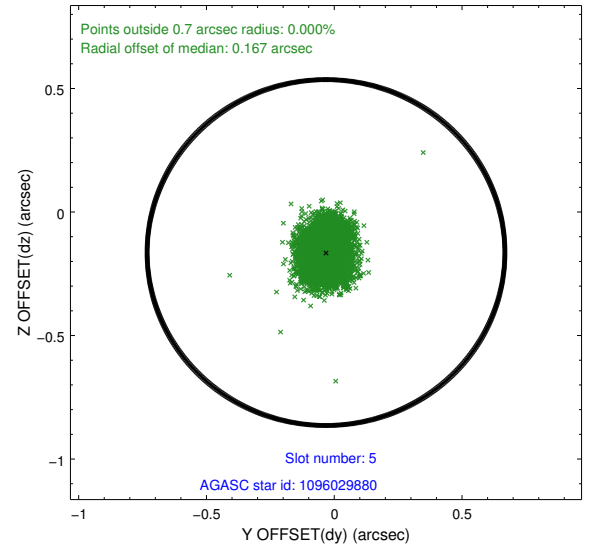
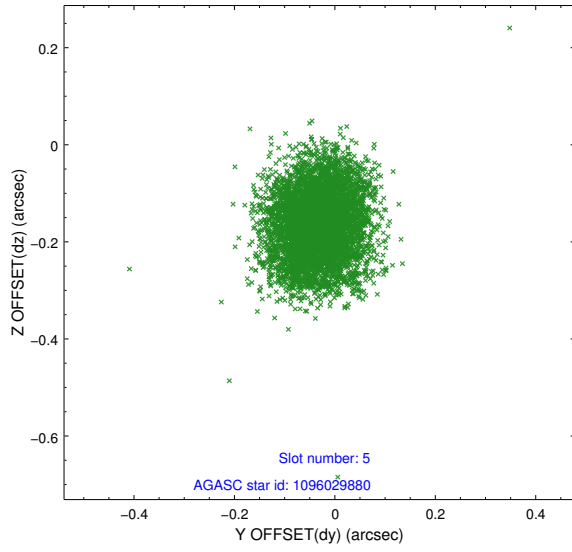
2.4.1 Slot 3



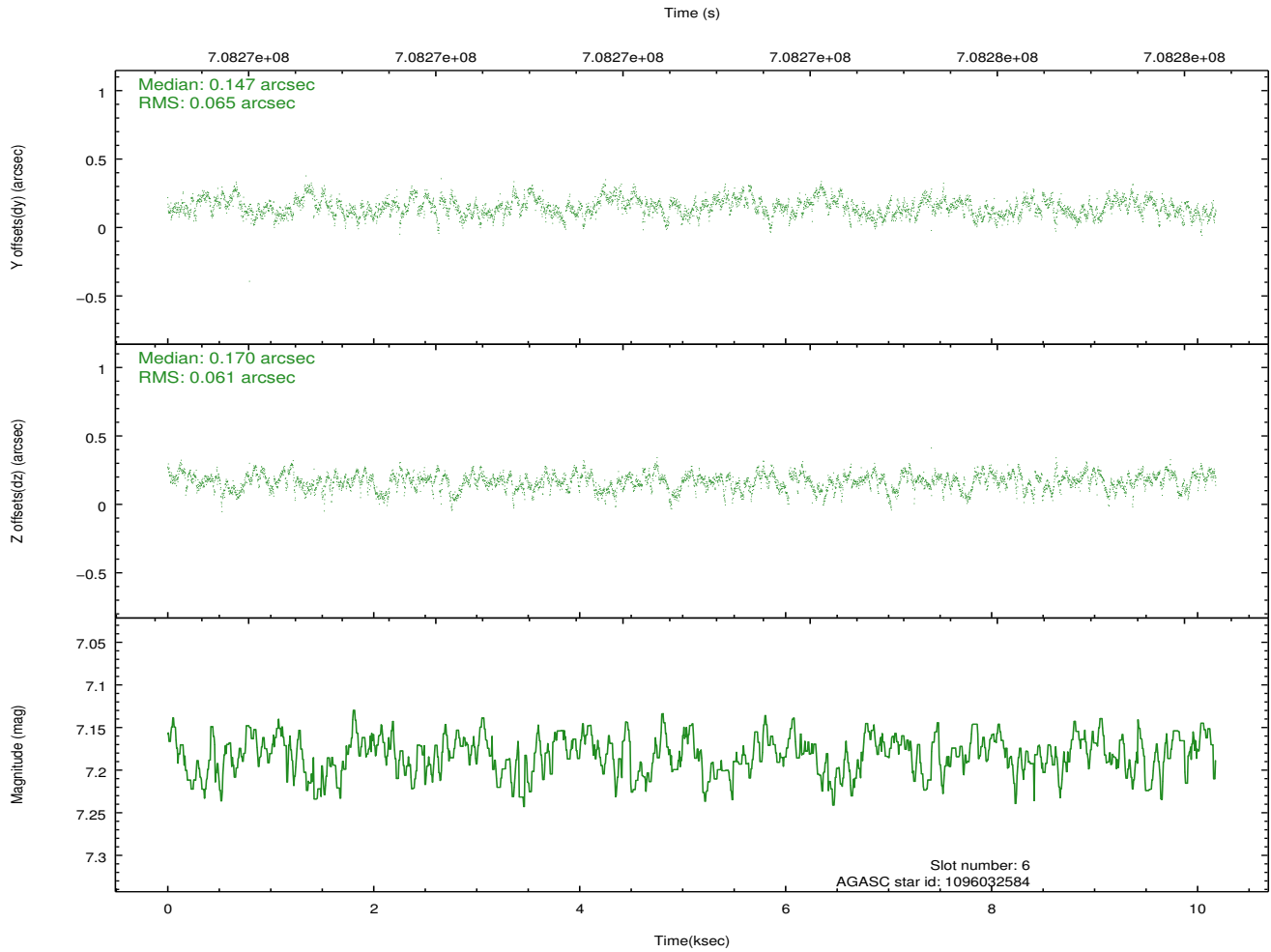
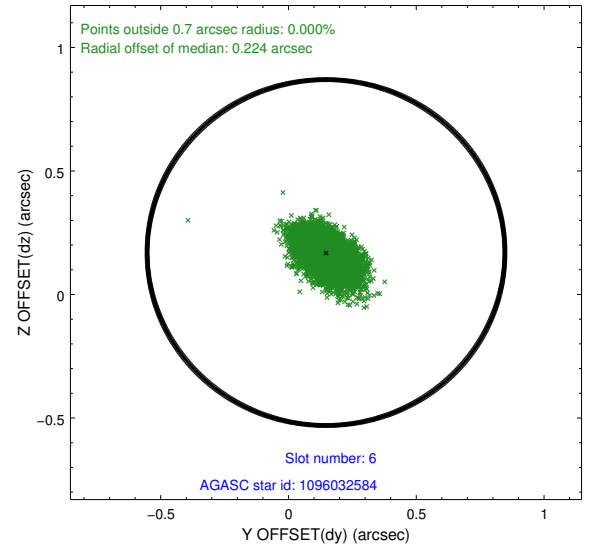
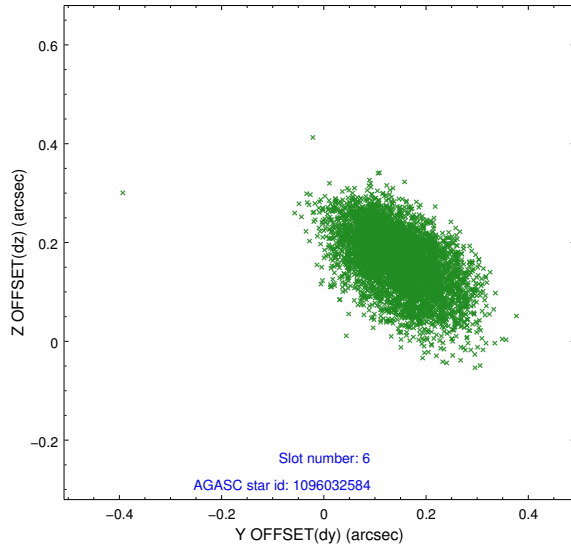
2.4.2 Slot 4



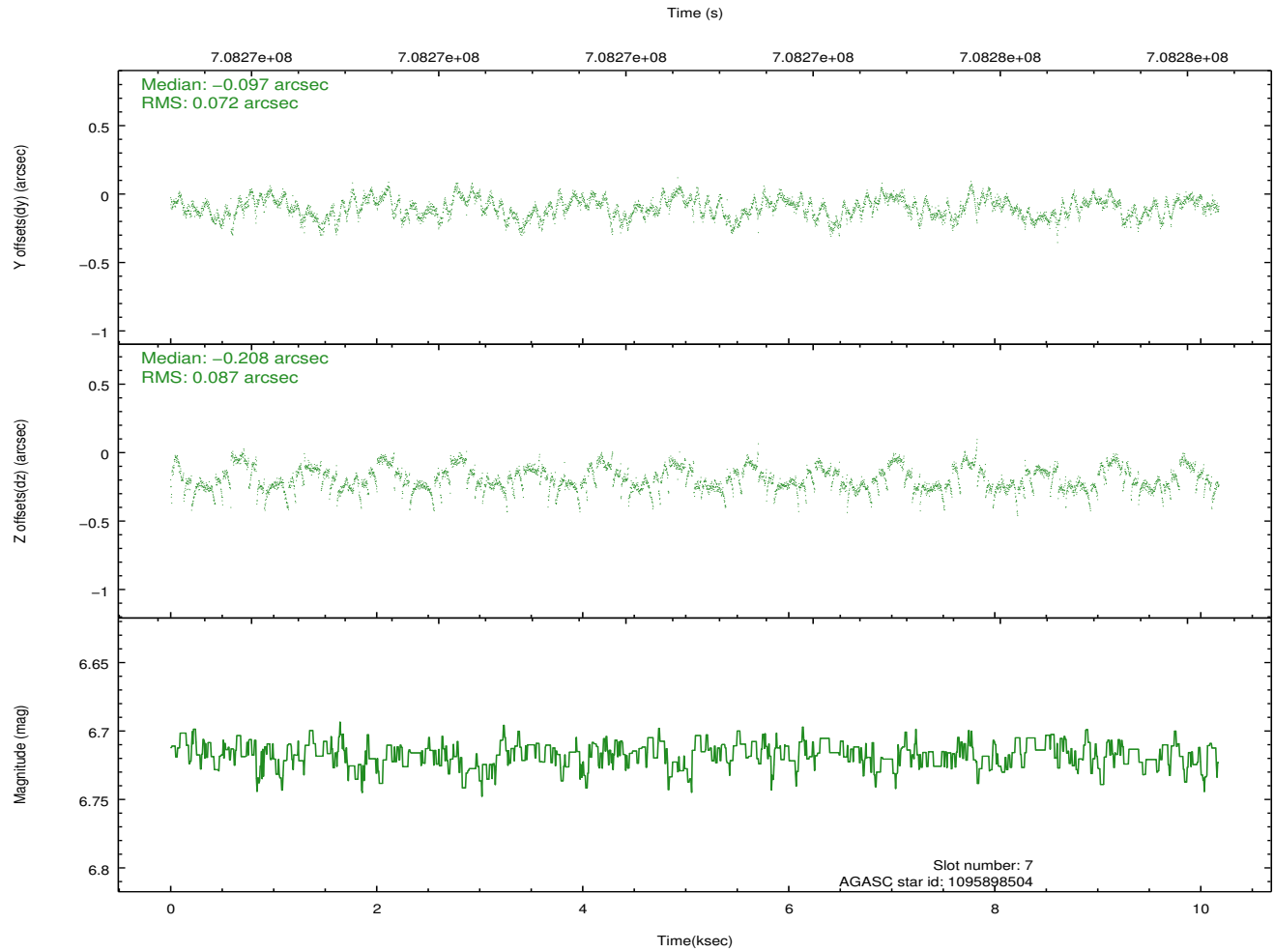
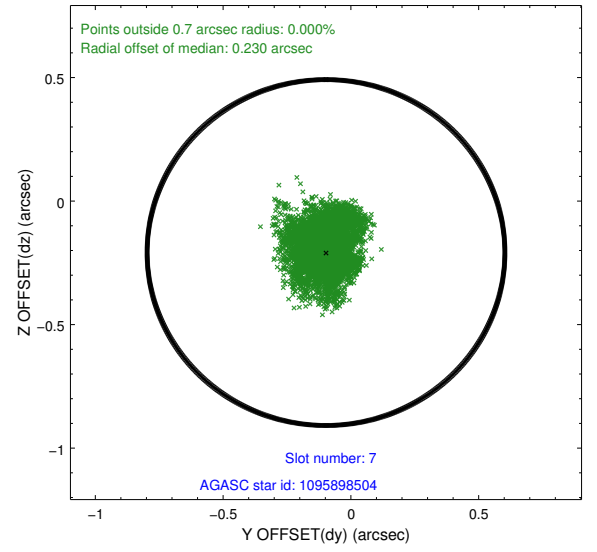
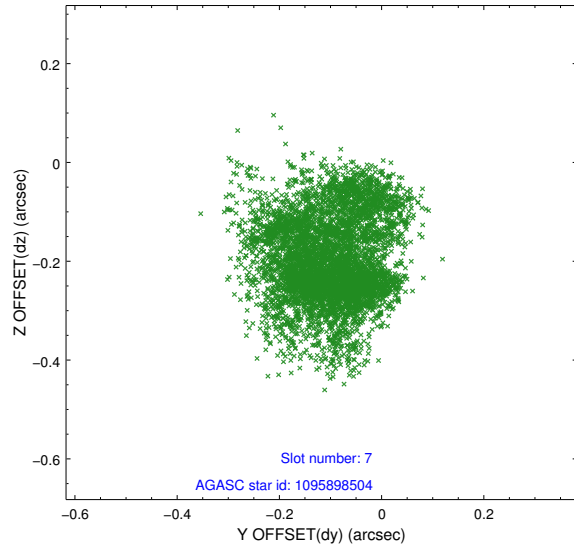
2.4.3 Slot 5



2.4.4 Slot 6

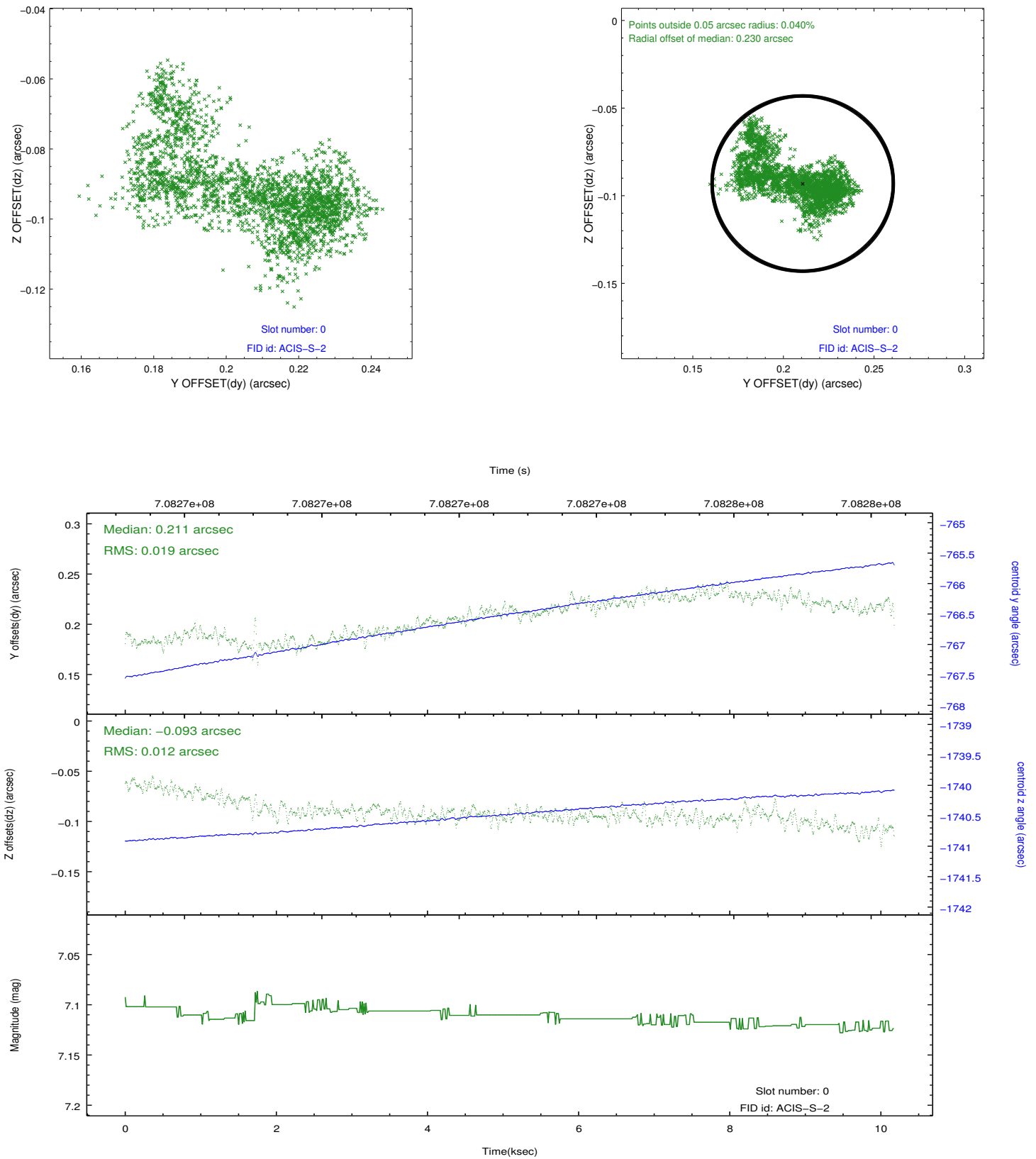


2.4.5 Slot 7

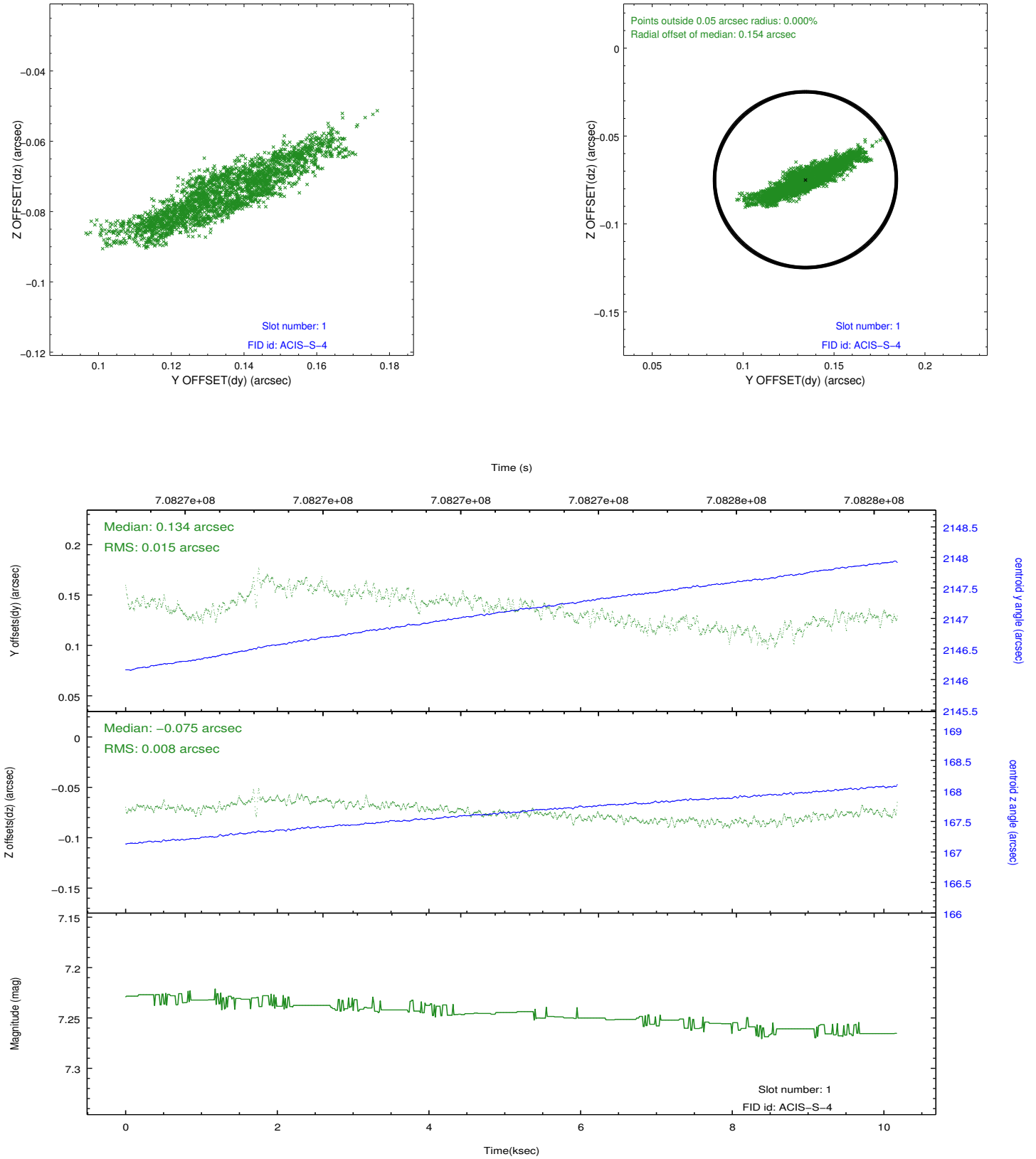


2.5 FID Slots

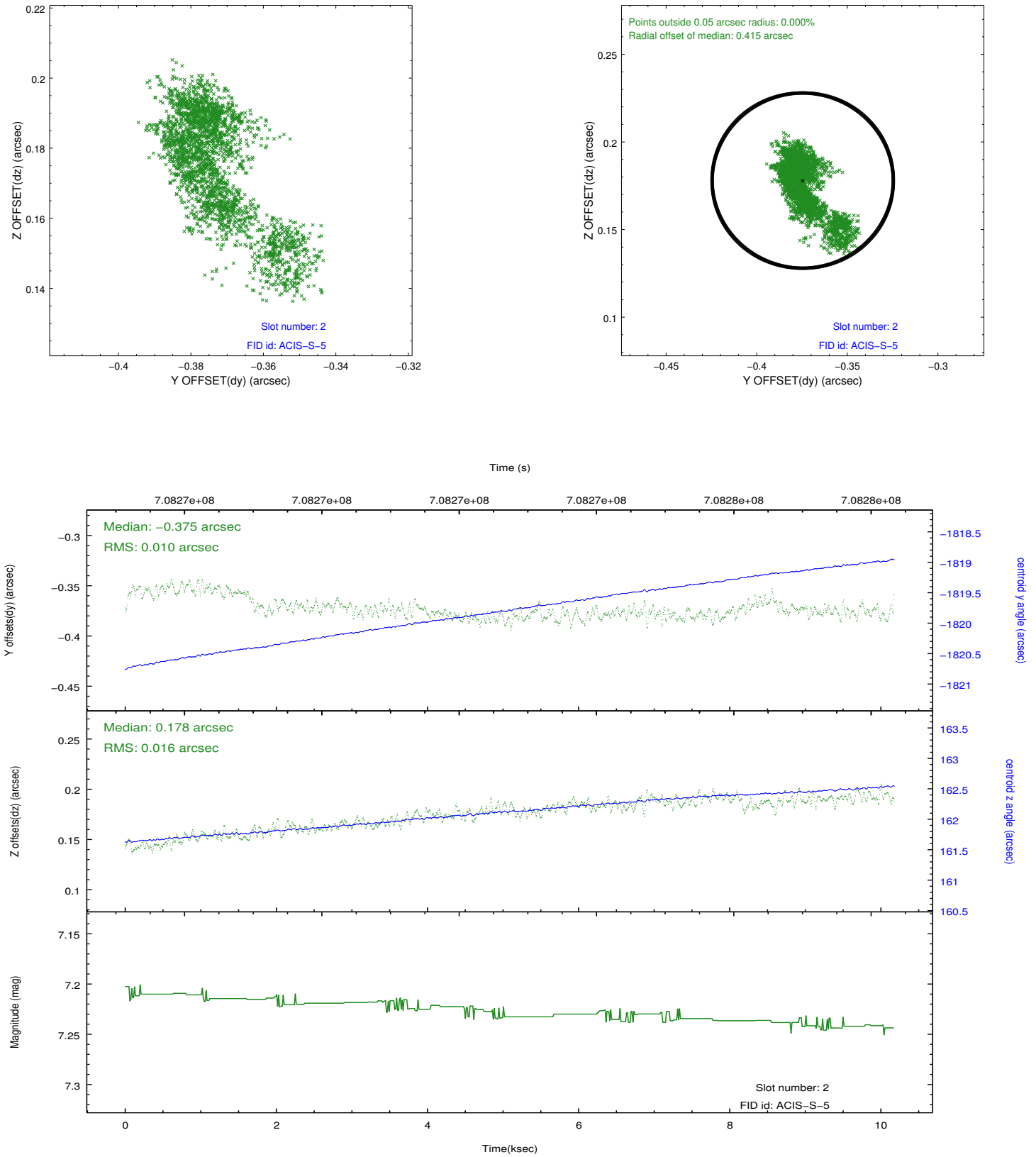
2.5.1 Slot 0



2.5.2 Slot 1



2.5.3 Slot 2



A Summary

A.1 Status

V&V Scientist	Jen Lauer
V&V Date (YYYY-MM-DD)	2020.06.12
V&V Edition	1
V&V Disposition and Status	OK
V&V Charge Time	10.098

A.2 Comments