

V&V Reference Report

L2 ASCDS Version : 10.7.1

Observation 21707 - L2 Version 1
Chandra X-Ray Center

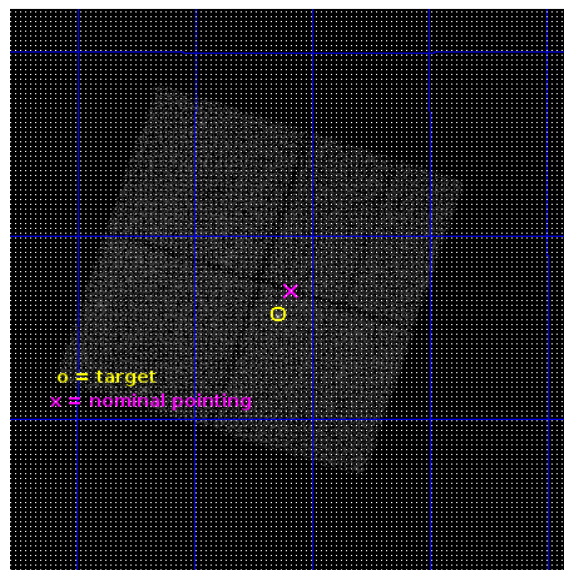
L2 Processing Date : Dec 26 2018

Contents

1	Front	2
2	OBI	3
2.1	OBI	3
2.1.1	Images	3
2.1.2	Bias	3
2.1.3	Parameters	4
2.1.4	Events	4
2.2	Compared Parameters	5
2.3	Aspect	6
2.4	Star Slots	9
2.4.1	Slot 3	9
2.4.2	Slot 4	10
2.4.3	Slot 5	11
2.4.4	Slot 6	12
2.4.5	Slot 7	13
2.5	FID Slots	14
2.5.1	Slot 0	14
2.5.2	Slot 1	15
2.5.3	Slot 2	16
A	Summary	17
A.1	Status	17
A.2	Comments	17

1 Front

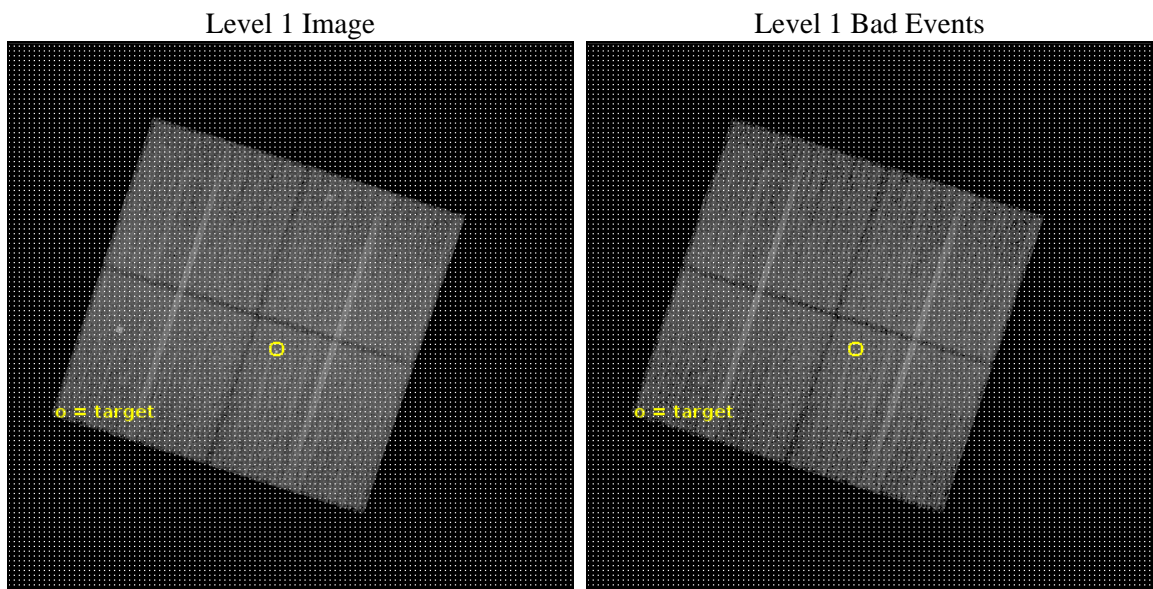
seq_num	801853	Sequence number
obs_id	21707	Observation id
title	A BL Lac object in a group	Proposal title
observer	Ralph Kraft	Principal investigator
object	1RXSJ080938.5+345544	Source name
dtcycle	0	
cycle	P	events from which exps? Prim/Second/Both
ra_targ	122.410417	Observer's specified target RA [deg]
dec_targ	34.928889	Observer's specified target Dec [deg]
ra_nom	122.3971235968	Nominal RA [deg]
dec_nom	34.950274935609	Nominal Dec [deg]
roll_nom	108.22556695036	Nominal Roll [deg]
revision	1	Processing version of data
ontime	28073.518035173	Sum of GTIs [s]
livetime	27706.716854621	Livetime [s]
ontime0	28076.659125686	Sum of GTIs [s]
ontime1	28076.659176111	Sum of GTIs [s]
ontime2	28073.518135071	Sum of GTIs [s]
ontime3	28073.518035173	Sum of GTIs [s]
l2events	75962	Number of level 2 events



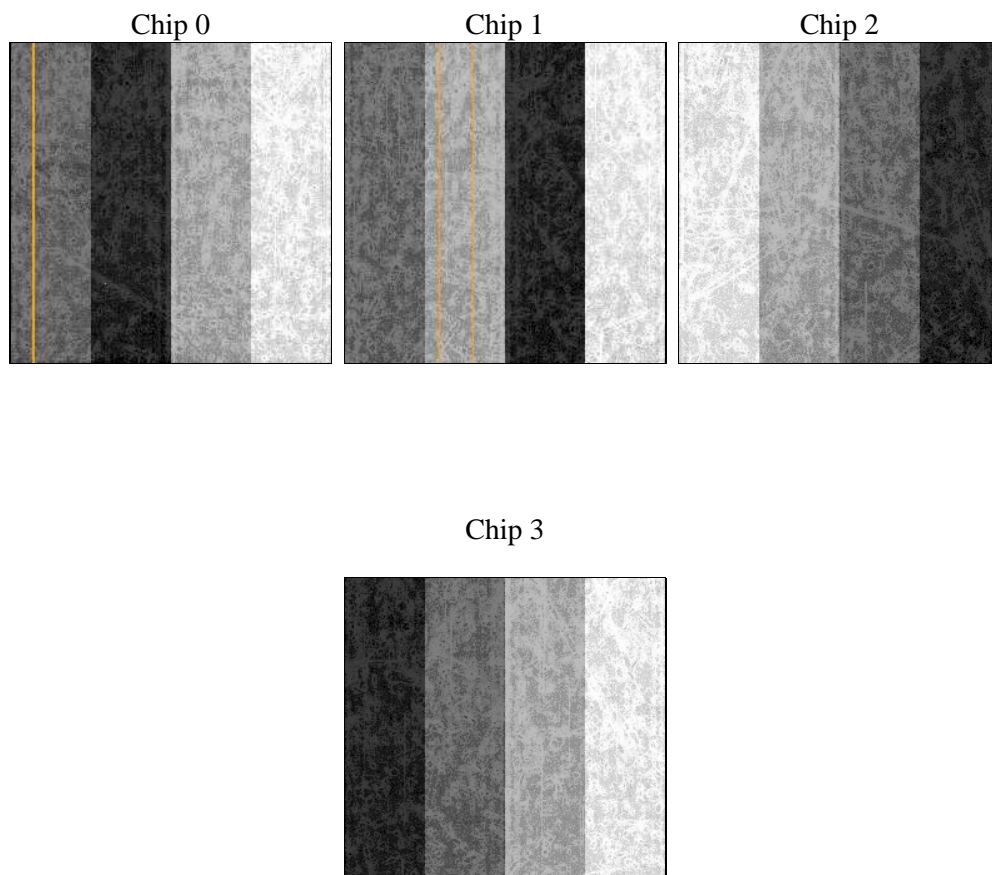
2 OBI

2.1 OBI

2.1.1 Images



2.1.2 Bias



2.1.3 Parameters

obi_num	0	Obi number	sched_exp_time	28000.000000	[s] Scheduled observation exposure time
ascdsver	10.7.1	Processing system revision	ontime	28073.518035173	Sum of GTIs [s]
caldsver	4.8.2	 	ontime0	28076.659125686	Sum of GTIs [s]
date	2018-12-27T00:42:25	Date and time of file creation	ontime1	28076.659176111	Sum of GTIs [s]
revision	1	Processing version of data	ontime2	28073.518135071	Sum of GTIs [s]
			ontime3	28073.518035173	Sum of GTIs [s]
			l1events	777110	Number of level 1 events

2.1.4 Events

	ccd 0	ccd 1	ccd 2	ccd 3
level 1 events	181909	185368	205759	204074
rejected events	160026	160751	184238	179103
rejected %	87%	86%	89%	87%

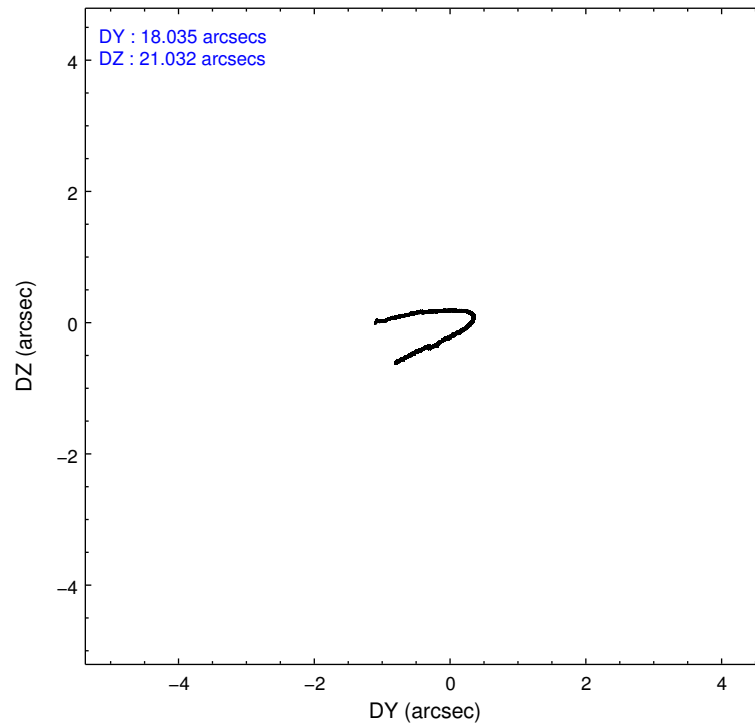
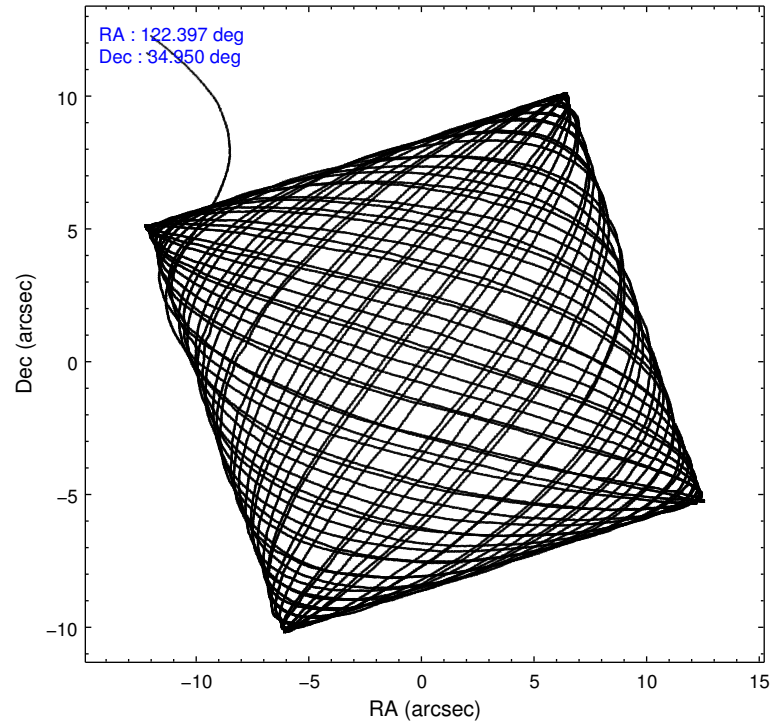
	ccd 0	ccd 1	ccd 2	ccd 3
grade 0 events	7810	9386	8121	10703
	4%	5%	3%	5%
grade 1 events	137	119	109	372
	0%	0%	0%	0%
grade 2 events	5546	5526	5233	5177
	3%	2%	2%	2%
grade 3 events	2242	2329	2015	2418
	1%	1%	0%	1%
grade 4 events	1998	2310	2158	2278
	1%	1%	1%	1%
grade 5 events	7050	7710	6763	8475
	3%	4%	3%	4%
grade 6 events	4290	5068	3998	4399
	2%	2%	1%	2%
grade 7 events	152836	152920	177362	170252
	84%	82%	86%	83%

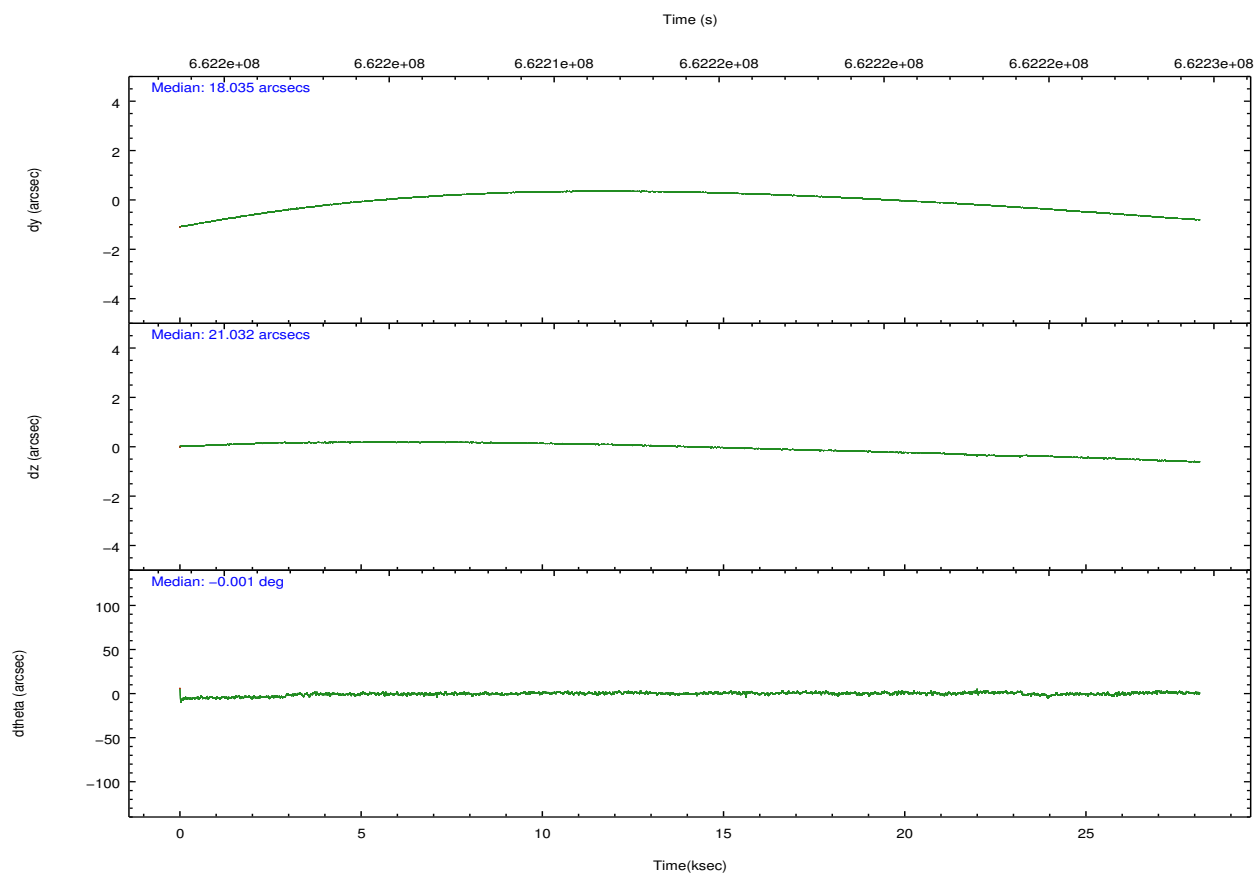
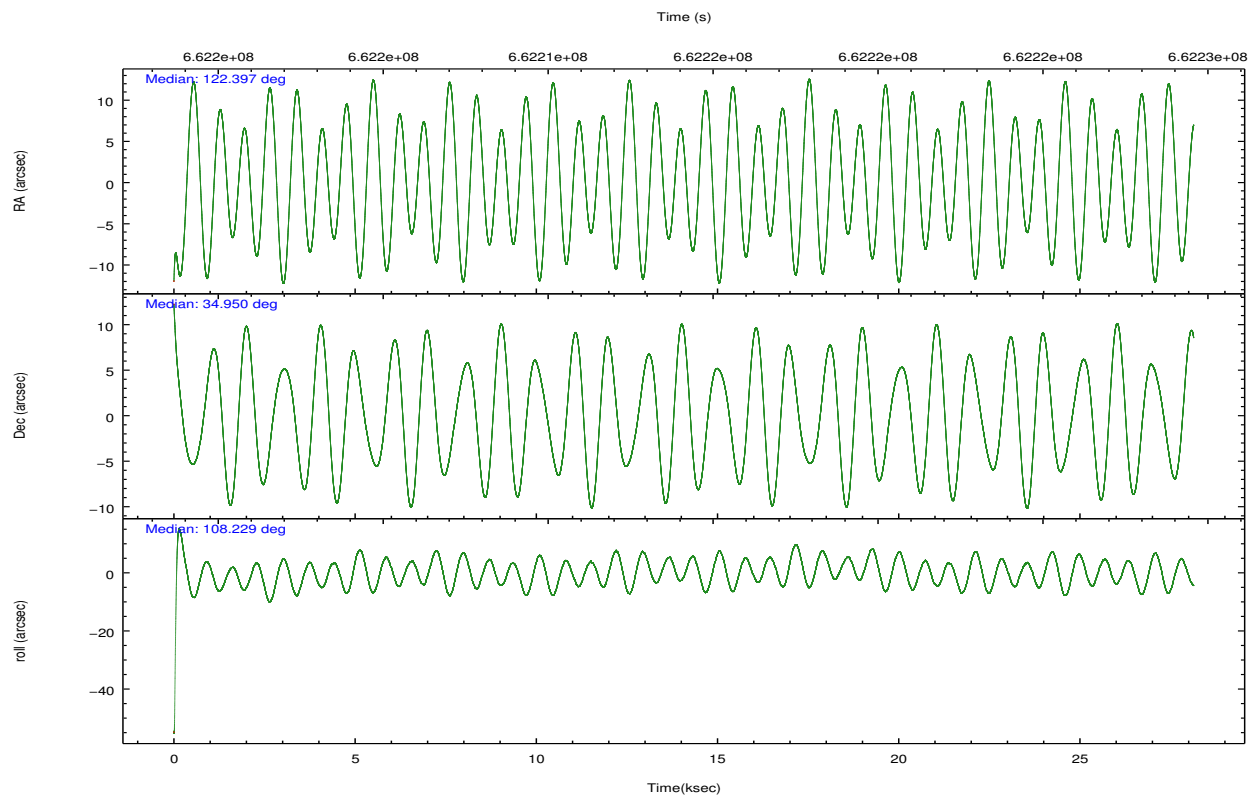
2.2 Compared Parameters

Parameter	Planned	Actual
Instrument	ACIS	ACIS
Detector	ACIS-0123	ACIS-0123
Grating	NONE	NONE
Data mode	VFAINT	VFAINT
Observation mode	POINTING	POINTING
[deg] Pointing RA	122.422331	122.3971235967977
[deg] Pointing Dec	34.931949	34.95027493560944
[deg] Pointing Roll	108.002481	108.2255669503554
[mm] SIM focus pos	-0.782348	-0.7809083437167272
[mm] SIM defocus	0	0.001439871863259334
[mm] SIM translation stage pos	-230.662463	-230.6733430263207
[mm] SIM translation stage offset	-2.93	-2.919109976609036
[s] Observation start time (MET)	662200191.184000	662199082.6204799
Observation start date	2018-12-26T08:28:42	2018-12-26T08:11:22
[s] Observation end time (MET)	662228191.184000	662229165.34727
Observation end date	2018-12-26T16:15:22	2018-12-26T16:32:45
Read mode	TIMED	TIMED

Parameter	Planned	Actual
Obspar format version number	7	7
Obspar file type	PREDICTED	ACTUAL
Obspar update status	NONE	UPDATED
Number of optional ACIS chips dropped	0	0
On-chip summing requested	N	N
Subarray requested	NONE	NONE
Alternating exposures requested	N	N
[s] Primary exposure time	0.000000	3.1

2.3 Aspect



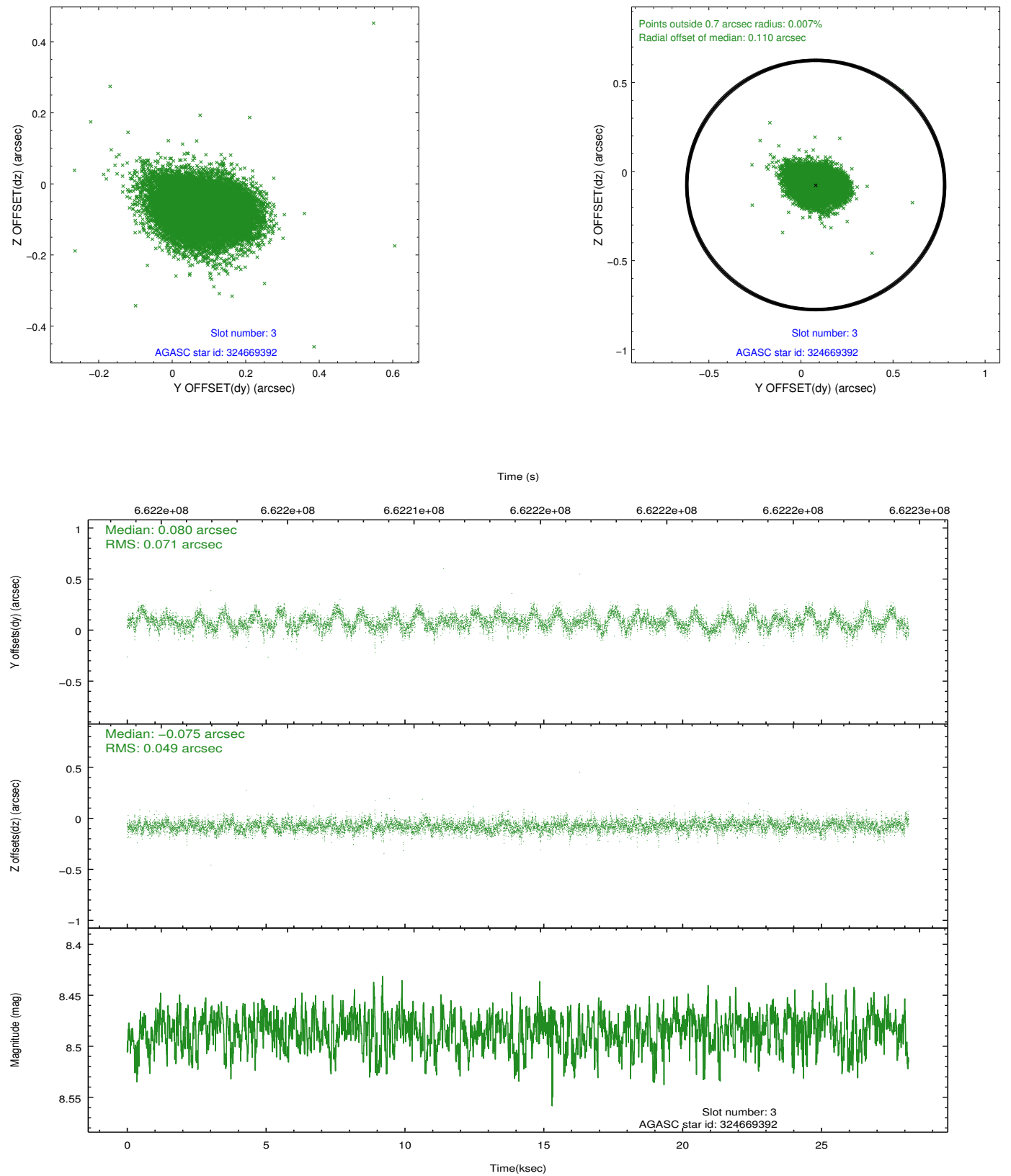


Slot Statistics

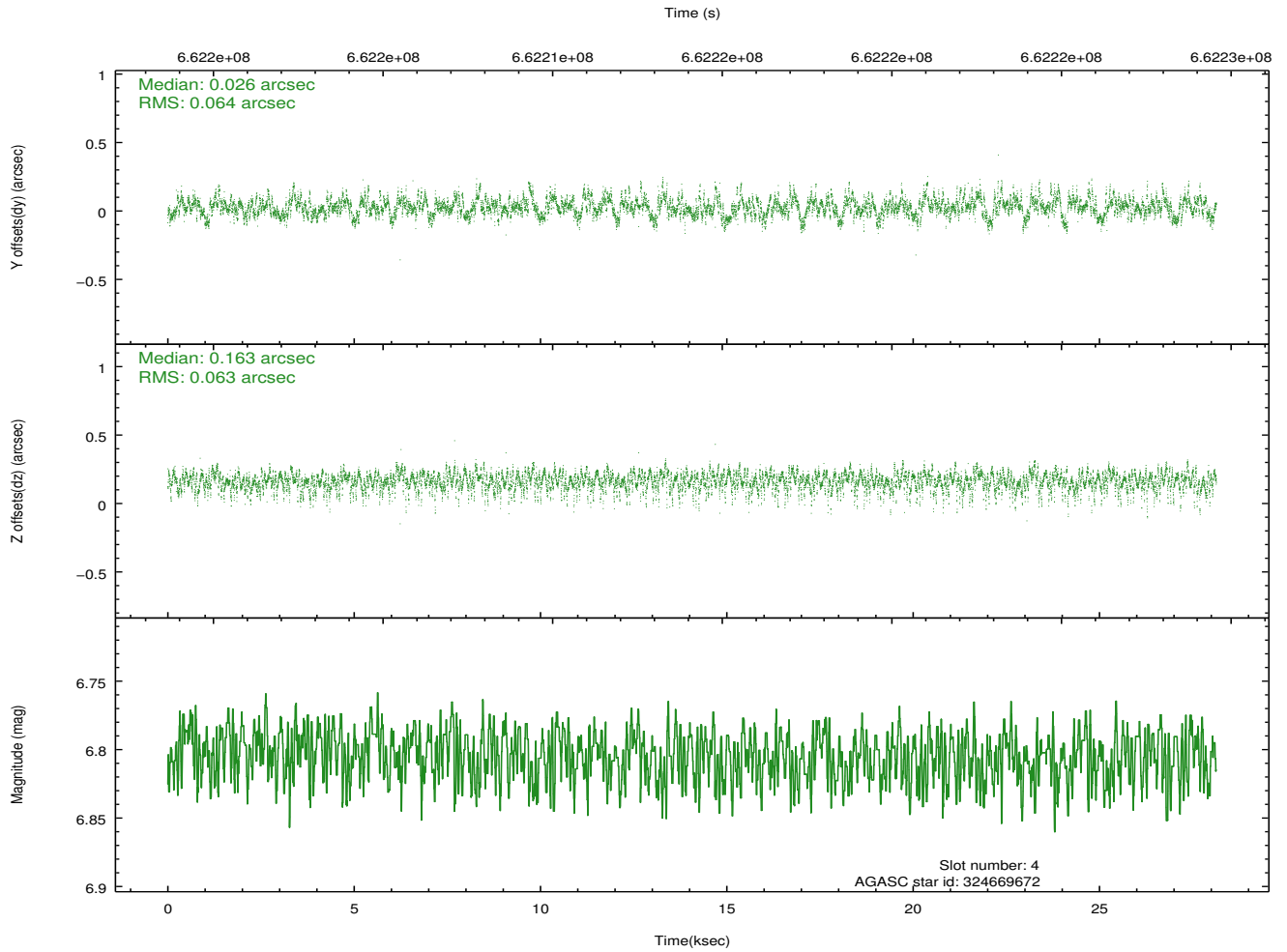
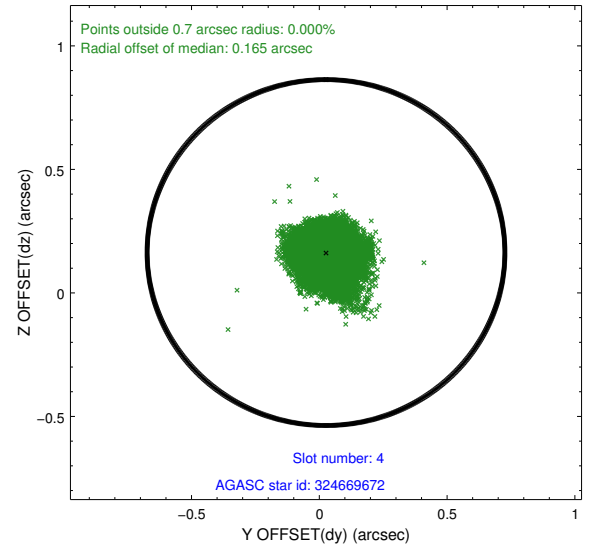
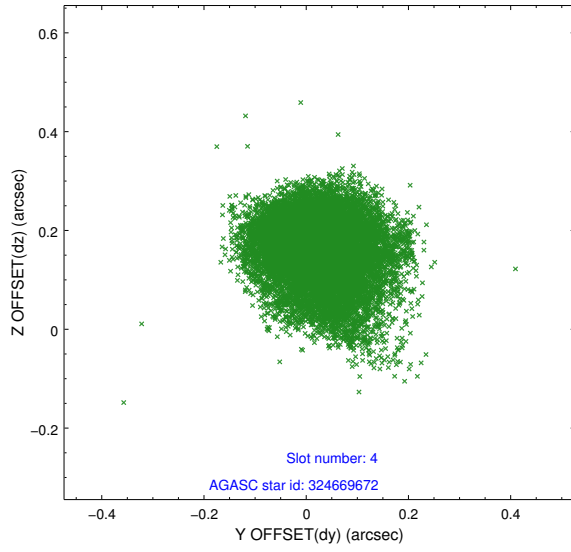
pt	status	used	id	mag	n_pts	frac_pts	med_dy	med_dz	dr1	dr2	ra	dec	mean_y	mea
0	FID		ACIS-I-1	7.17	6864	1.000	0.010	-0.127	0.014	0.027	0.000000	0.000000	921.37	-904
1	FID		ACIS-I-2	7.10	6862	1.000	-0.657	-0.297	0.019	0.050	0.000000	0.000000	-773.48	-910
2	FID		ACIS-I-4	7.07	6864	1.000	0.547	0.490	0.016	0.046	0.000000	0.000000	2141.62	996
3	GUIDE	used	324669392	8.48	13713	1.000	0.080	-0.075	0.091	0.149	122.314154	34.306803	-2040.23	1001
4	GUIDE	used	324669672	6.80	13725	1.000	0.026	0.163	0.095	0.157	122.547825	35.454982	1671.86	-934
5	GUIDE	used	324673288	8.01	13724	1.000	-0.137	-0.198	0.092	0.153	122.449919	35.393958	1556.96	-590
6	GUIDE	used	324676216	7.82	13726	1.000	-0.505	-0.648	0.087	0.145	121.733938	34.774460	96.40	2108
7	GUIDE	used	324675744	8.25	13721	1.000	0.532	0.762	0.132	0.218	123.153334	34.445730	-2327.09	-1524

2.4 Star Slots

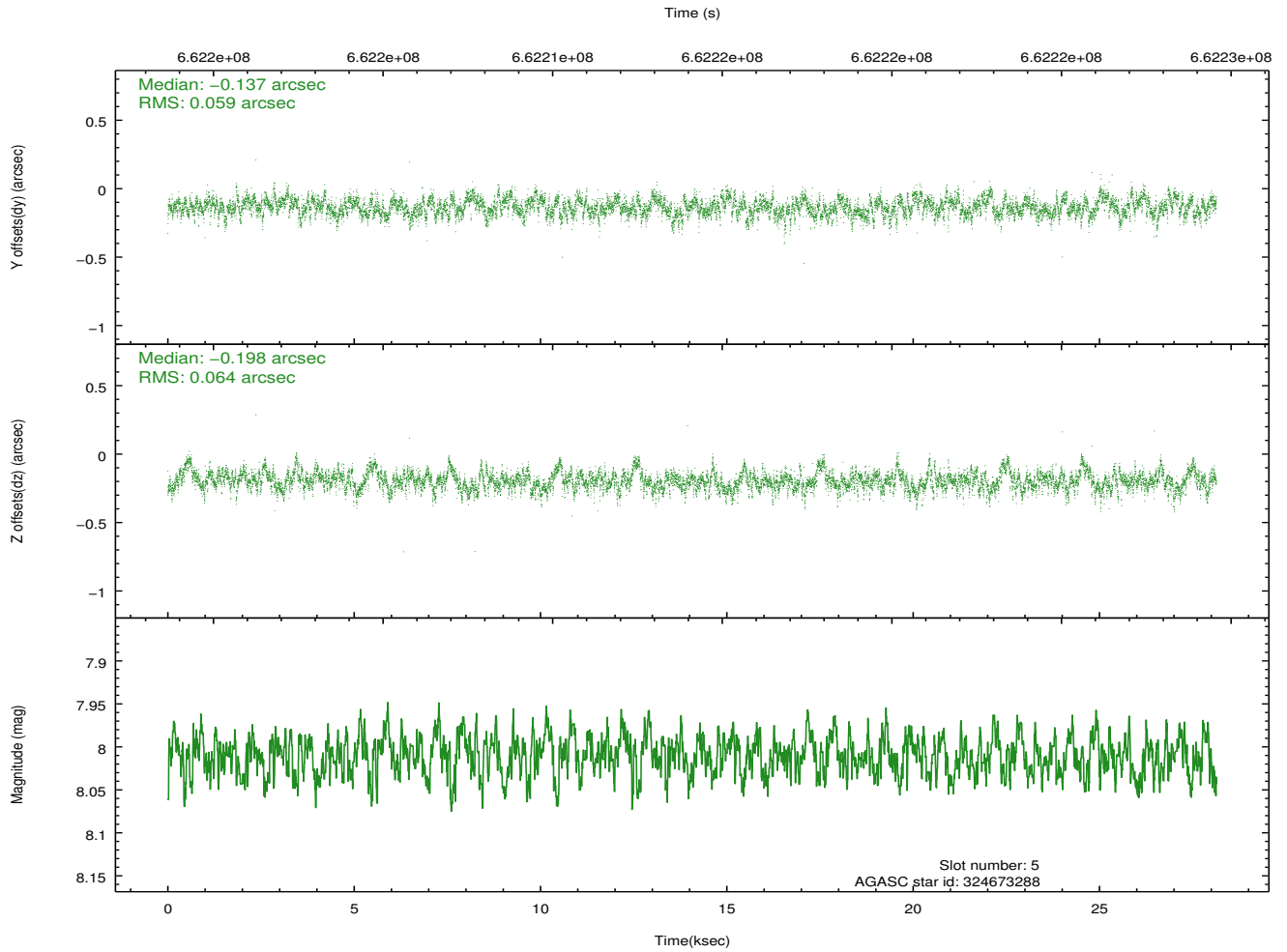
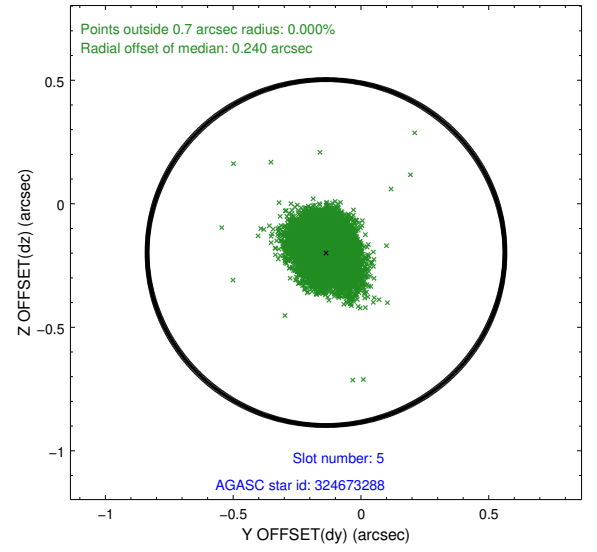
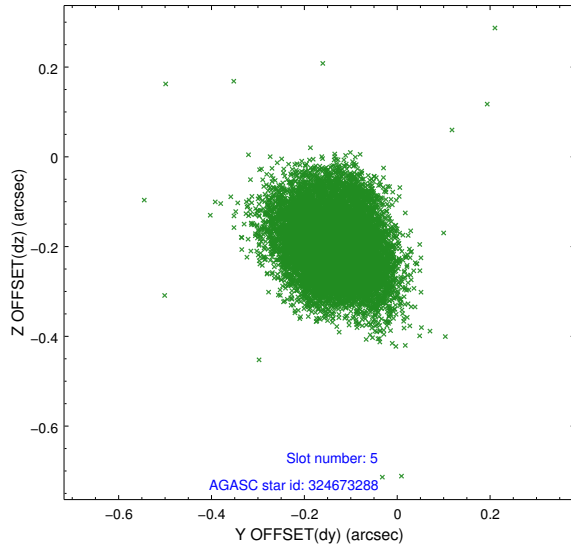
2.4.1 Slot 3



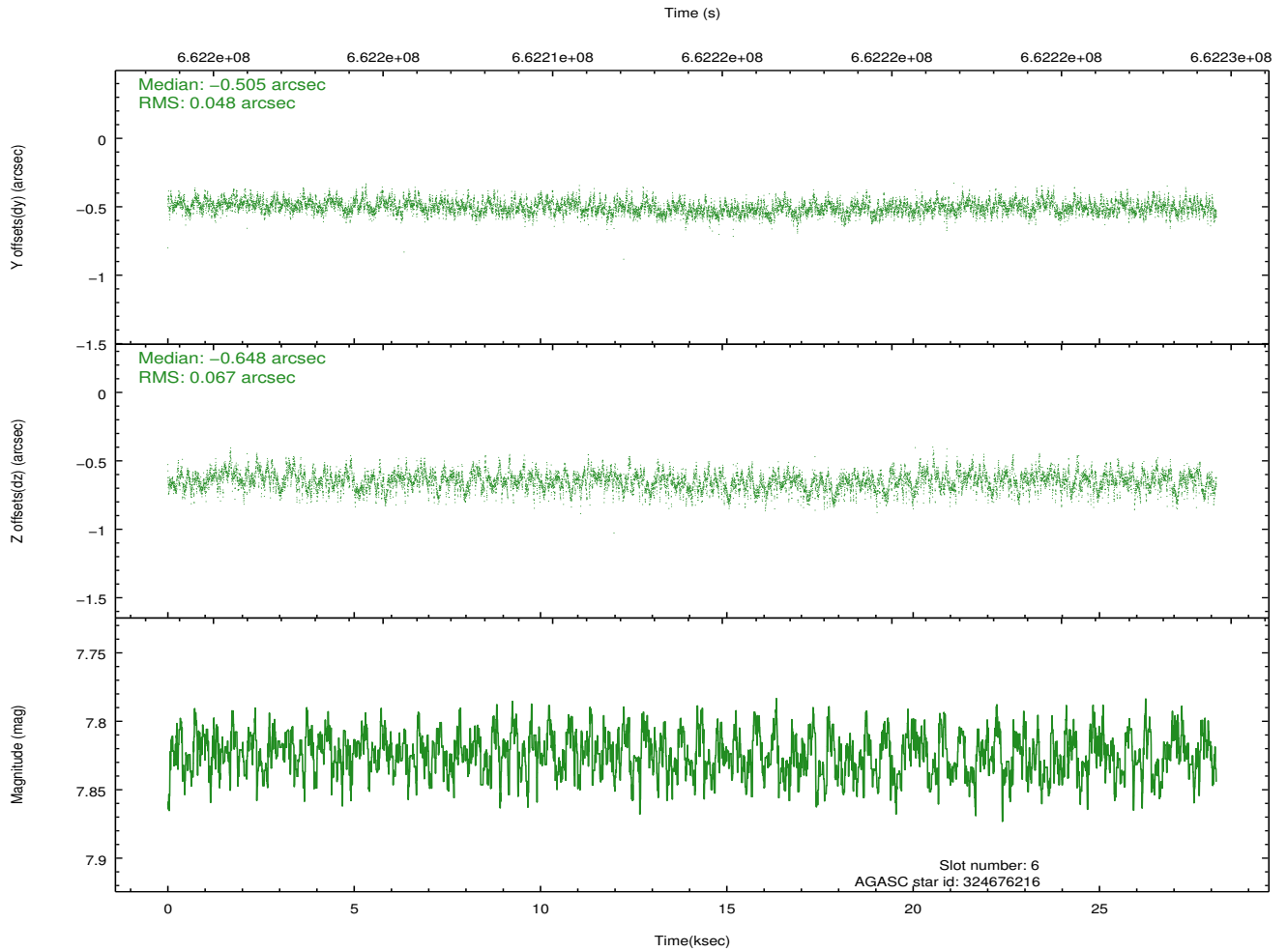
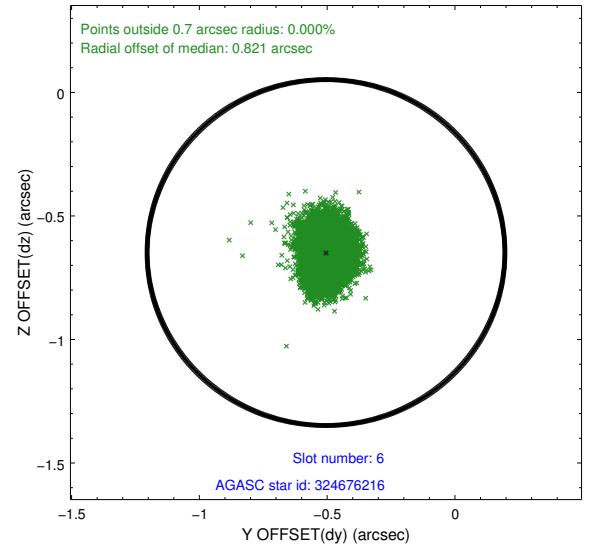
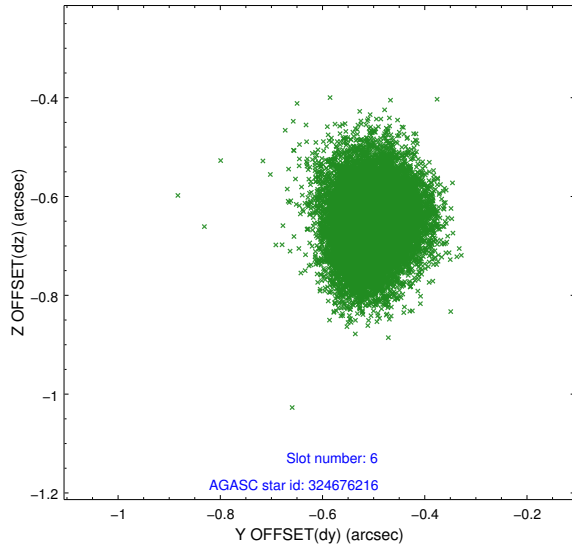
2.4.2 Slot 4



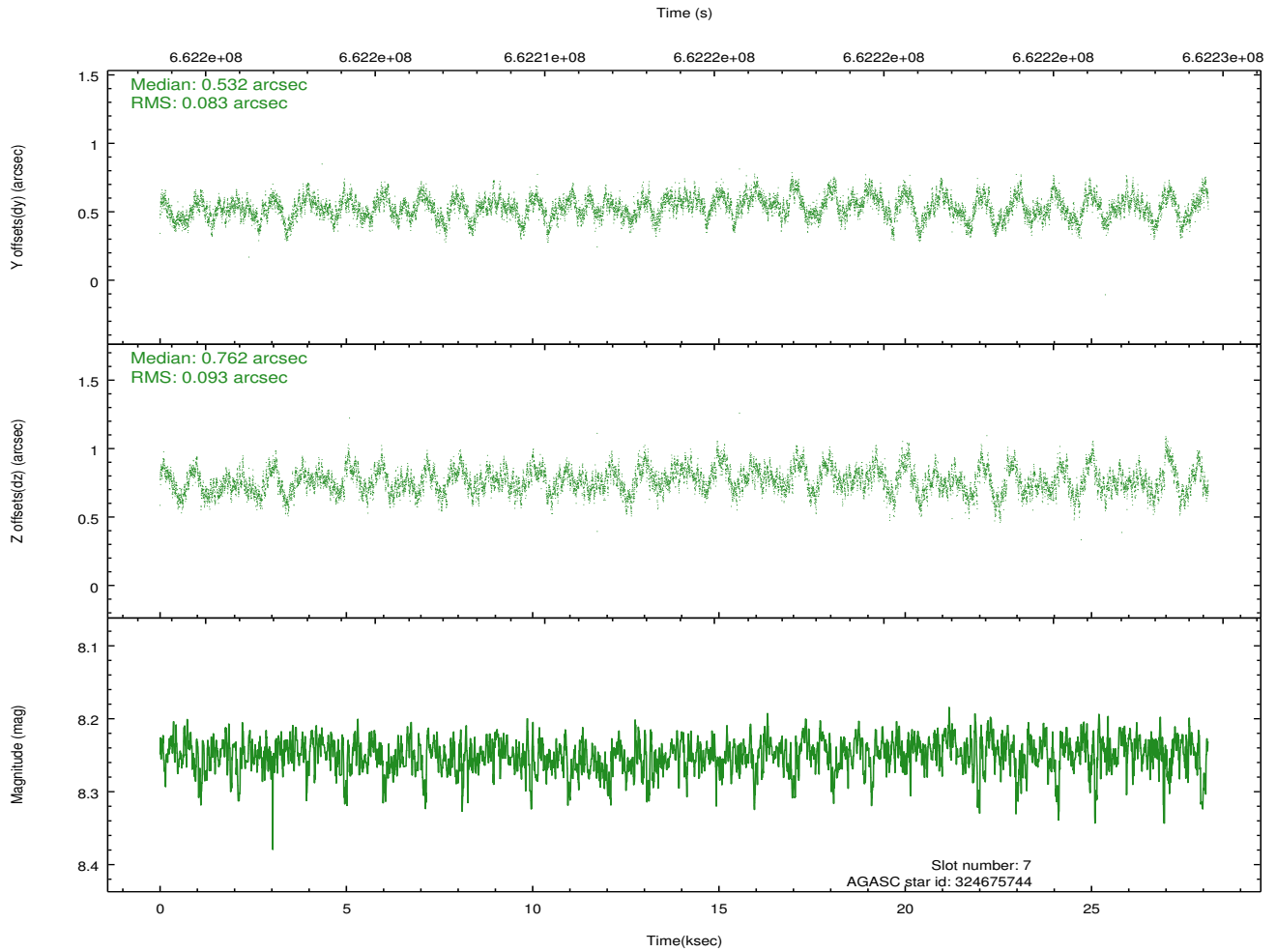
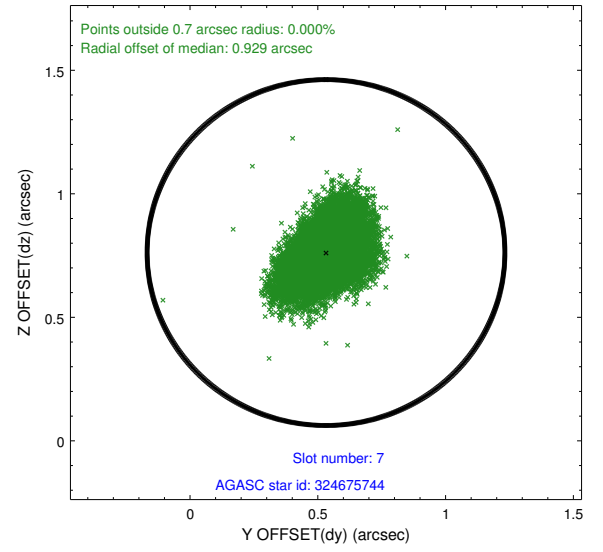
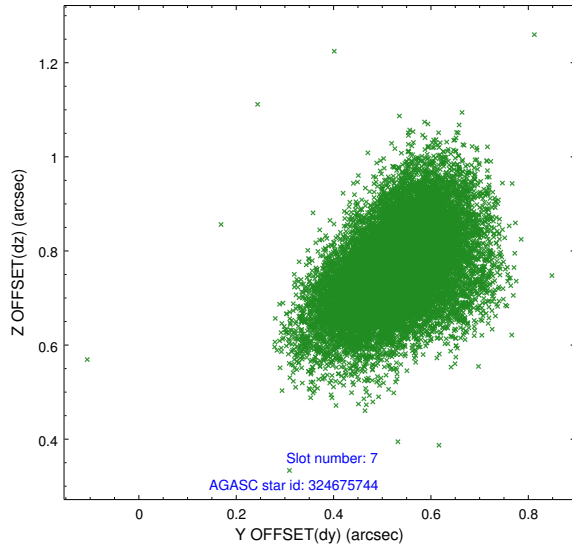
2.4.3 Slot 5



2.4.4 Slot 6

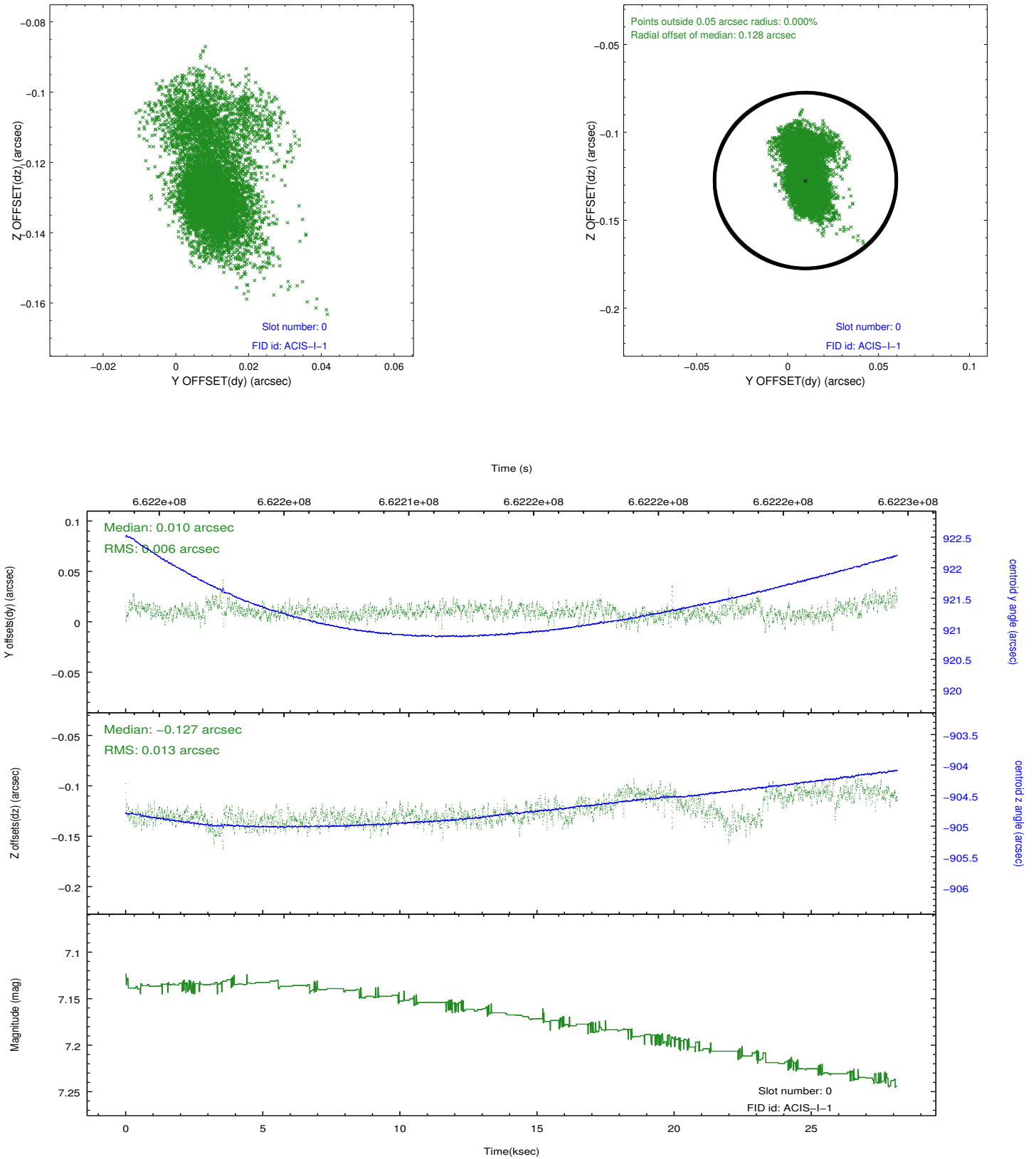


2.4.5 Slot 7

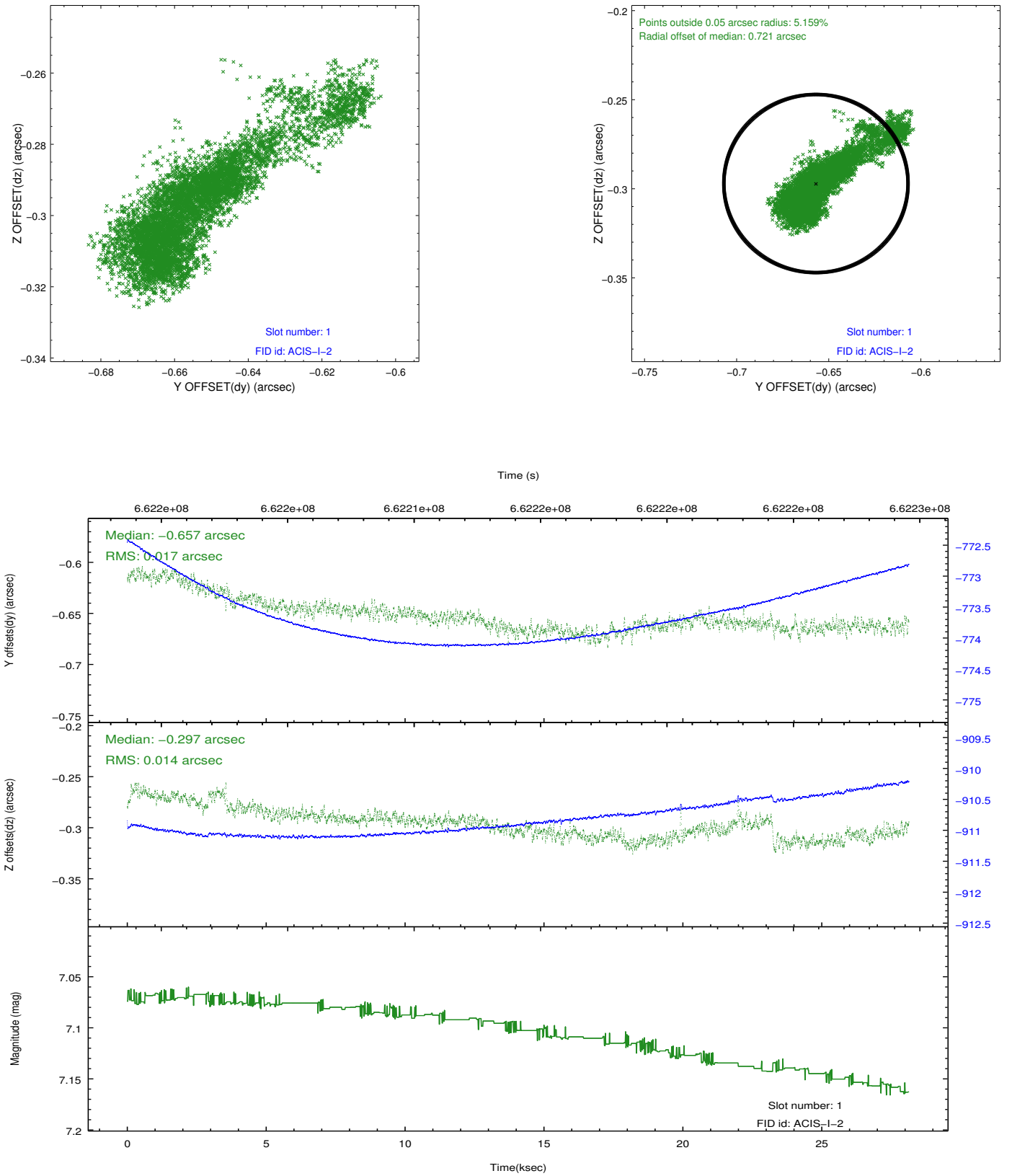


2.5 FID Slots

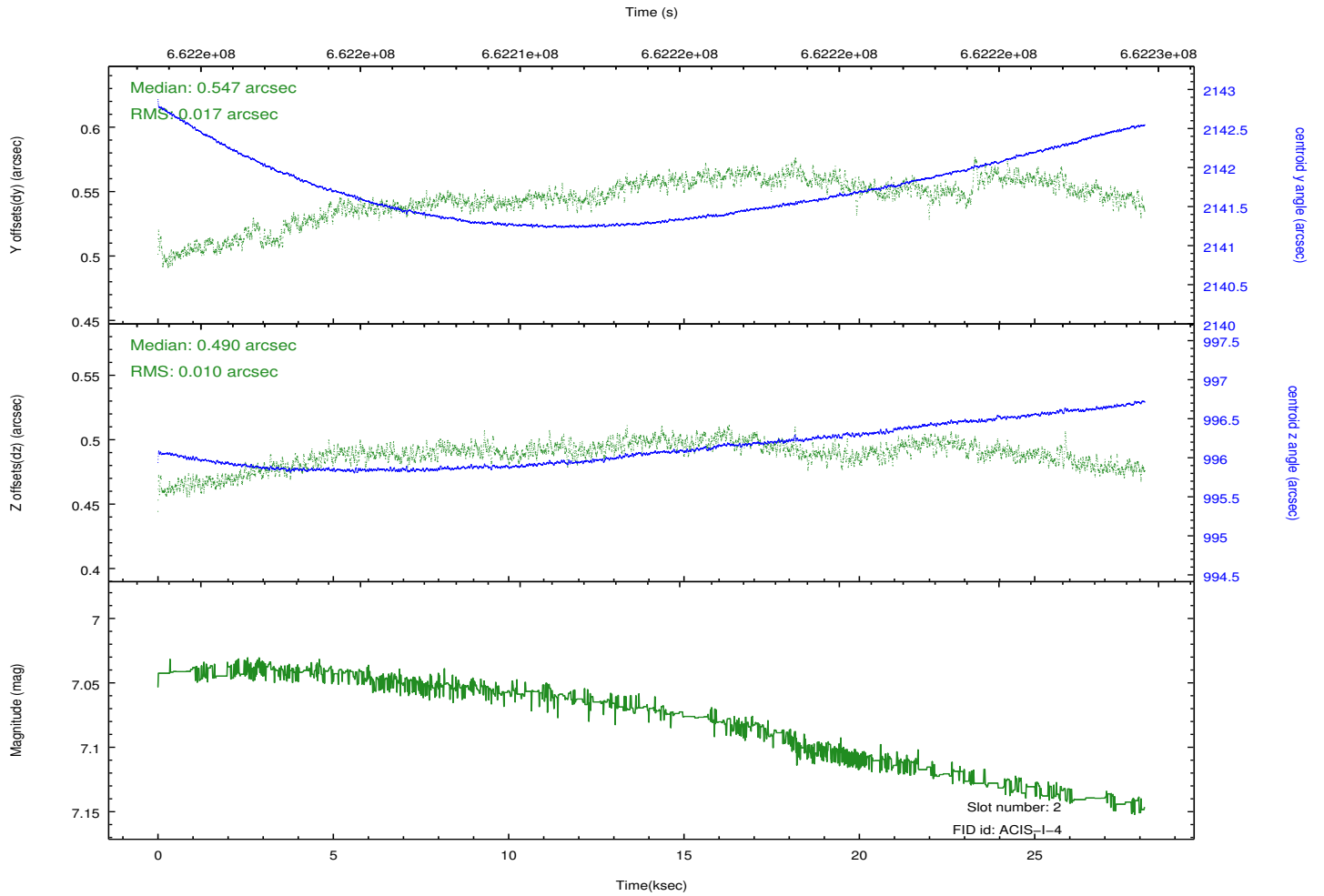
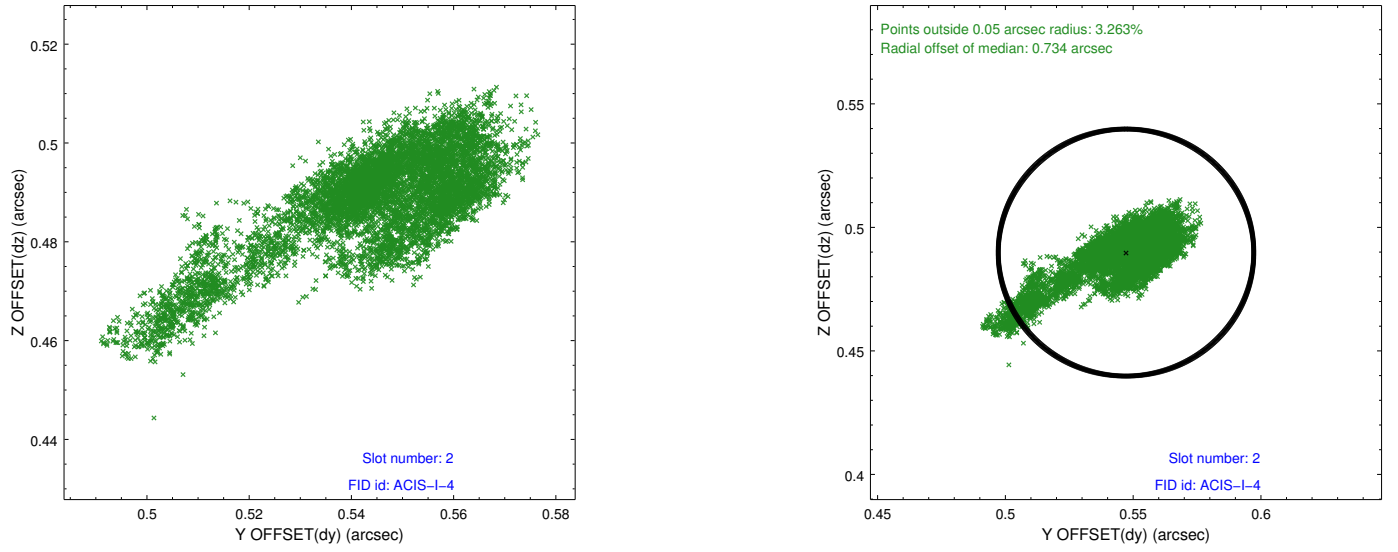
2.5.1 Slot 0



2.5.2 Slot 1



2.5.3 Slot 2



A Summary

A.1 Status

V&V Scientist	Jen Lauer
V&V Date (YYYY-MM-DD)	2018.12.27
V&V Edition	1
V&V Disposition and Status	OK
V&V Charge Time	28.073518035173

A.2 Comments