

V&V Reference Report

L2 ASCDS Version : 10.8.1

Observation 23166 - L2 Version 1
Chandra X-Ray Center

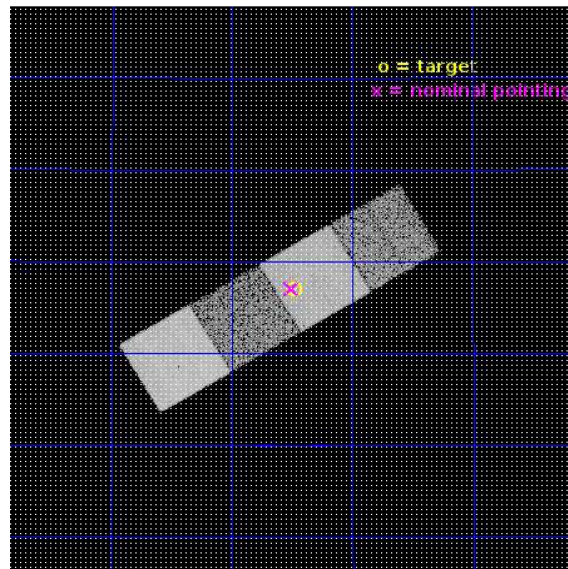
L2 Processing Date : Feb 21 2020

Contents

1	Front	2
2	OBI	3
2.1	OBI	3
2.1.1	Images	3
2.1.2	Bias	3
2.1.3	Parameters	4
2.1.4	Events	4
2.2	Compared Parameters	5
2.3	Aspect	6
2.4	Star Slots	9
2.4.1	Slot 3	9
2.4.2	Slot 4	10
2.4.3	Slot 5	11
2.4.4	Slot 6	12
2.4.5	Slot 7	13
2.5	FID Slots	14
2.5.1	Slot 0	14
2.5.2	Slot 1	15
2.5.3	Slot 2	16
A	Summary	17
A.1	Status	17
A.2	Comments	17

1 Front

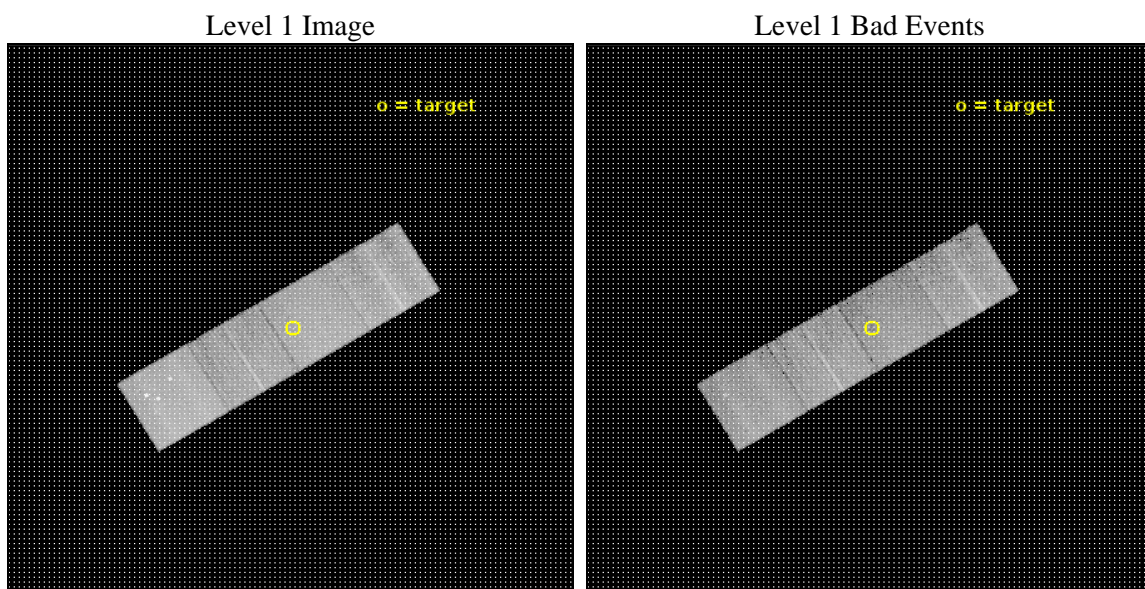
seq_num	704040	Sequence number
obs_id	23166	Observation id
title	C-BASS: A Chandra Legacy Survey of AGN at the Highest Spatial Resolutions	Proposal title
observer	Michael Koss	Principal investigator
object	IC 5373	Source name
dtcycle	0	
cycle	P	events from which exps? Prim/Second/Both
ra_targ	0.120503	Observer's specified target RA [deg]
dec_targ	32.782349	Observer's specified target Dec [deg]
ra_nom	0.12680273620276	Nominal RA [deg]
dec_nom	32.784292153405	Nominal Dec [deg]
roll_nom	329.15321000407	Nominal Roll [deg]
revision	1	Processing version of data
ontime	10059.500077486	Sum of GTIs [s]
livetime	9928.0653032775	Livetime [s]
ontime5	10059.500077486	Sum of GTIs [s]
ontime6	10059.500077486	Sum of GTIs [s]
ontime7	10059.500077486	Sum of GTIs [s]
ontime8	10059.500077486	Sum of GTIs [s]
l2events	114399	Number of level 2 events



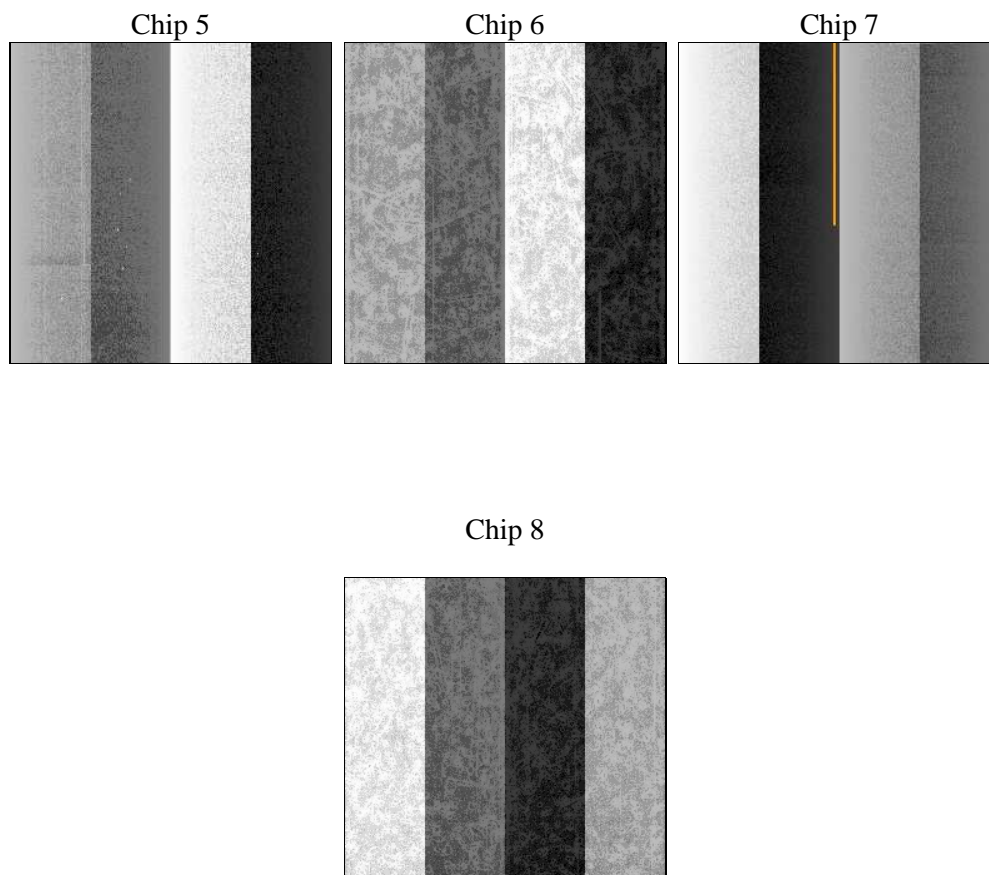
2 OBI

2.1 OBI

2.1.1 Images



2.1.2 Bias



2.1.3 Parameters

obi_num	0	Obi number	sched_exp_time	10000.873000	[s] Scheduled observation exposure time
ascdsver	10.8.1	Processing system revision	ontime	10059.500077486	Sum of GTIs [s]
caldsver	4.8.4.2	 	ontime5	10059.500077486	Sum of GTIs [s]
date	2020-02-21T18:56:51	Date and time of file creation	ontime6	10059.500077486	Sum of GTIs [s]
revision	1	Processing version of data	ontime7	10059.500077486	Sum of GTIs [s]
			ontime8	10059.500077486	Sum of GTIs [s]
			l1events	410752	Number of level 1 events

2.1.4 Events

	ccd 5	ccd 6	ccd 7	ccd 8
level 1 events	129347	81429	100067	99909
rejected events	66496	72939	57076	74026
rejected %	51%	89%	57%	74%

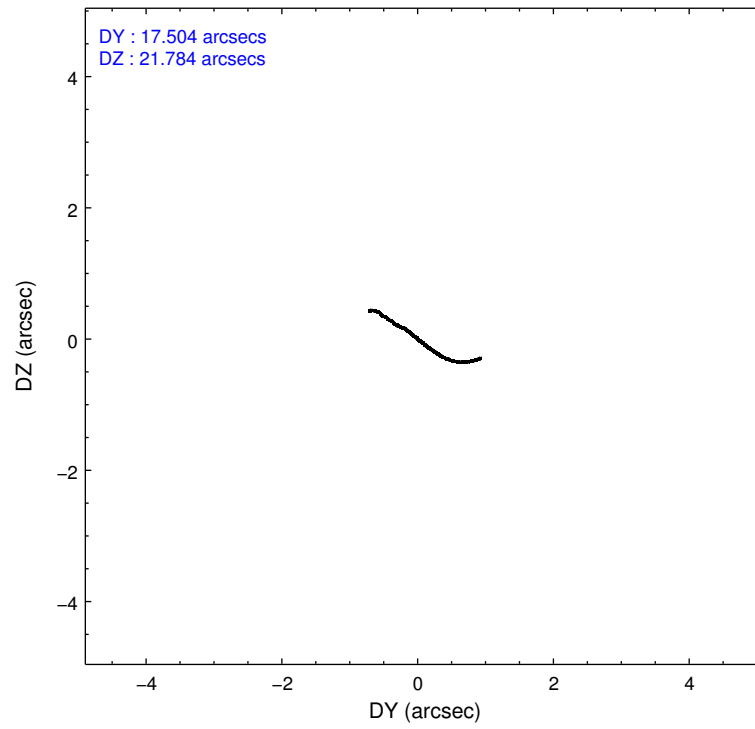
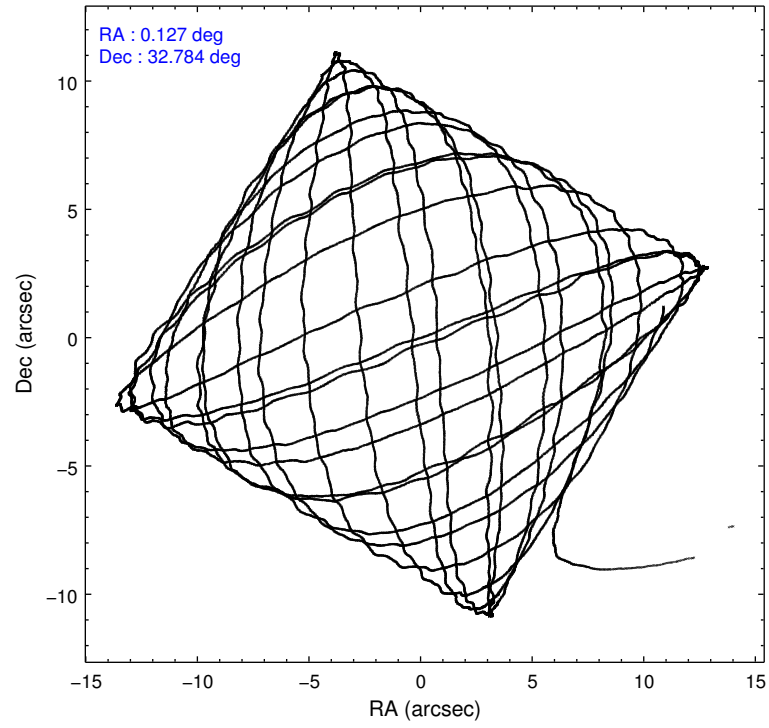
	ccd 5	ccd 6	ccd 7	ccd 8
grade 0 events	6991	2400	3582	7451
	5%	2%	3%	7%
grade 1 events	644	29	152	69
	0%	0%	0%	0%
grade 2 events	18454	2409	9105	6332
	14%	2%	9%	6%
grade 3 events	2034	655	3262	2662
	1%	0%	3%	2%
grade 4 events	2012	687	3190	2507
	1%	0%	3%	2%
grade 5 events	7731	3256	9535	5315
	5%	3%	9%	5%
grade 6 events	33386	2345	23885	6934
	25%	2%	23%	6%
grade 7 events	58095	69648	47356	68639
	44%	85%	47%	68%

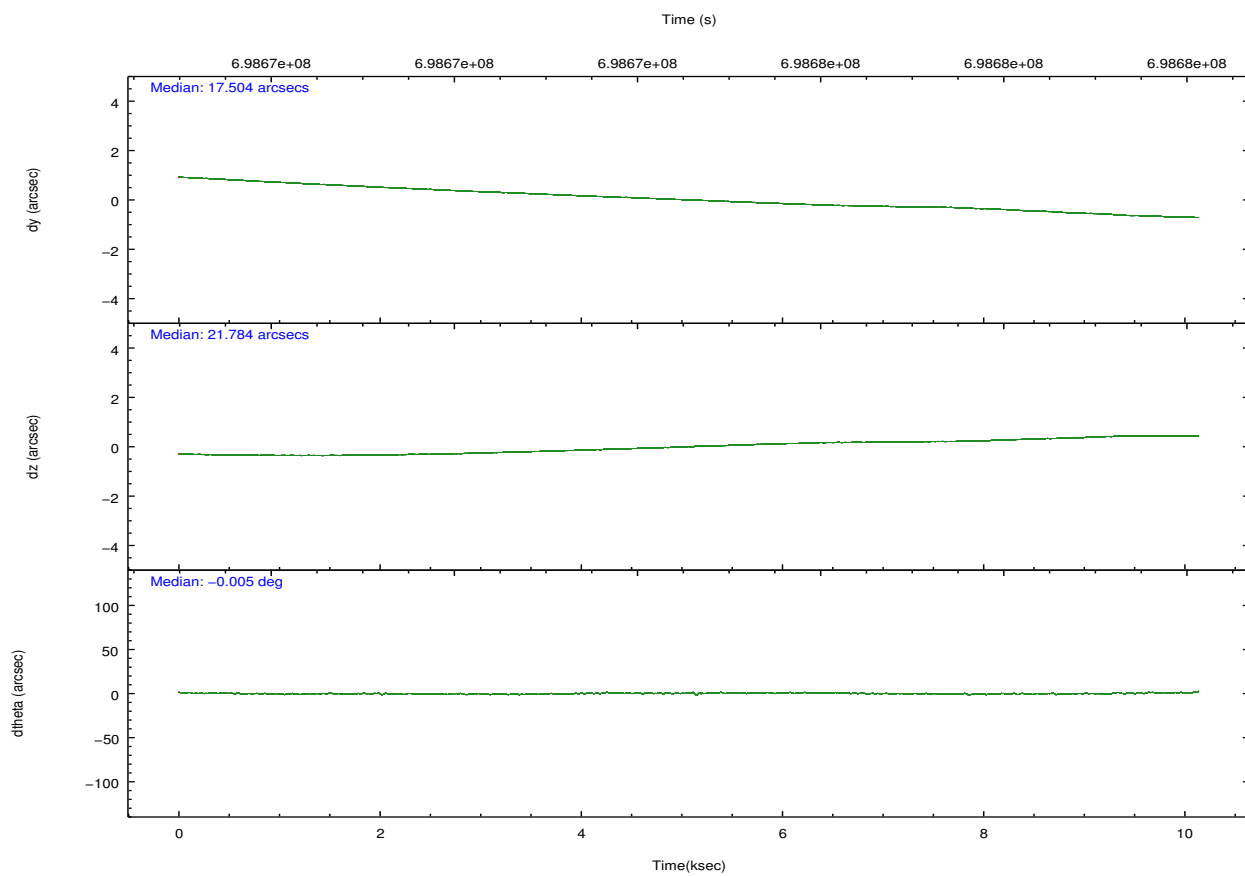
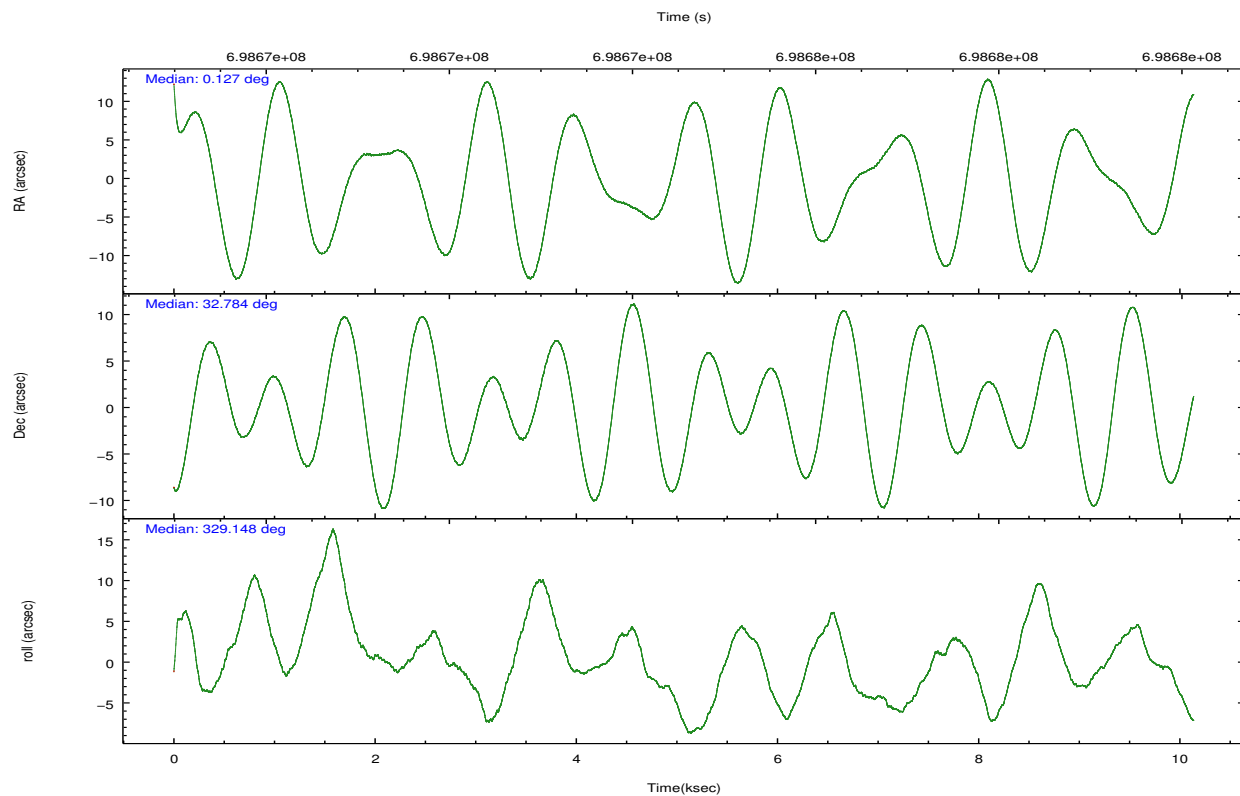
2.2 Compared Parameters

Parameter	Planned	Actual
Instrument	ACIS	ACIS
Detector	ACIS-5678	ACIS-5678
Grating	NONE	NONE
Data mode	VFAINT	VFAINT
Observation mode	POINTING	POINTING
[deg] Pointing RA	0.094121	0.1268027362027624
[deg] Pointing Dec	32.784356	32.78429215340547
[deg] Pointing Roll	329.014287	329.1532100040722
[mm] SIM focus pos	-0.684267	-0.6828225247311905
[mm] SIM defocus	0	0.001444936568705701
[mm] SIM translation stage pos	-190.132523	-190.1400660498719
[mm] SIM translation stage offset	0	0.00754346686406393
[s] Observation start time (MET)	698669618.184000	698668289.6119601
Observation start date	2020-02-21T10:52:29	2020-02-21T10:31:29
[s] Observation end time (MET)	698679619.184000	698680784.87521
Observation end date	2020-02-21T13:39:10	2020-02-21T13:59:44
Read mode	TIMED	TIMED

Parameter	Planned	Actual
Obspar format version number	7	7
Obspar file type	PREDICTED	ACTUAL
Obspar update status	NONE	UPDATED
CCD I0 on	N	N
CCD I1 on	N	N
CCD I2 on	N	N
CCD I3 on	N	N
CCD S0 on	N	N
CCD S1 on	O1	Y
CCD S2 on	Y	Y
CCD S3 on	Y	Y
CCD S4 on	Y	Y
CCD S5 on	N	N
Number of optional ACIS chips dropped	0	0
On-chip summing requested	N	N
Subarray requested	NONE	NONE
Alternating exposures requested	N	N
[s] Primary exposure time	0.000000	3.1

2.3 Aspect



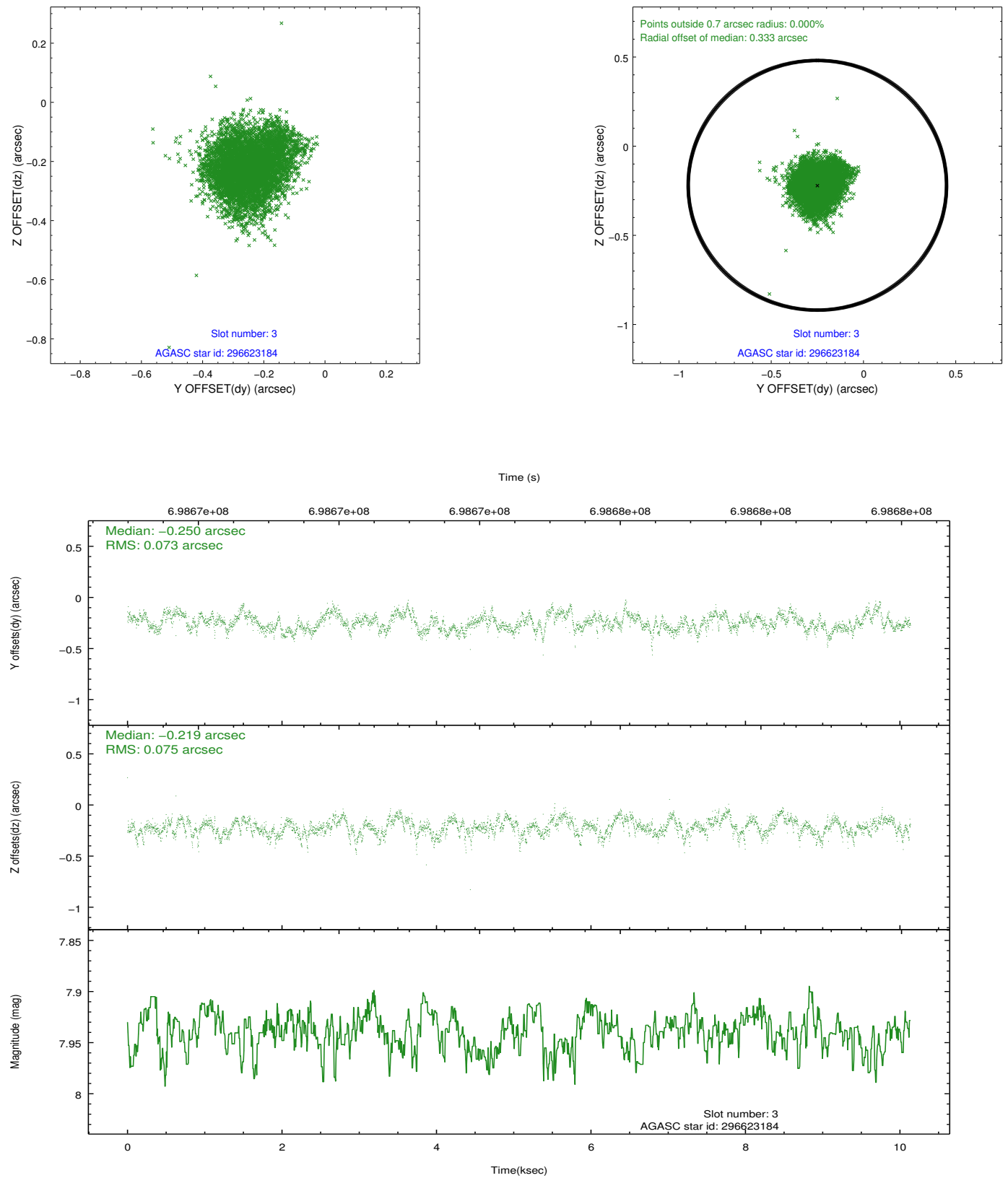


Slot Statistics

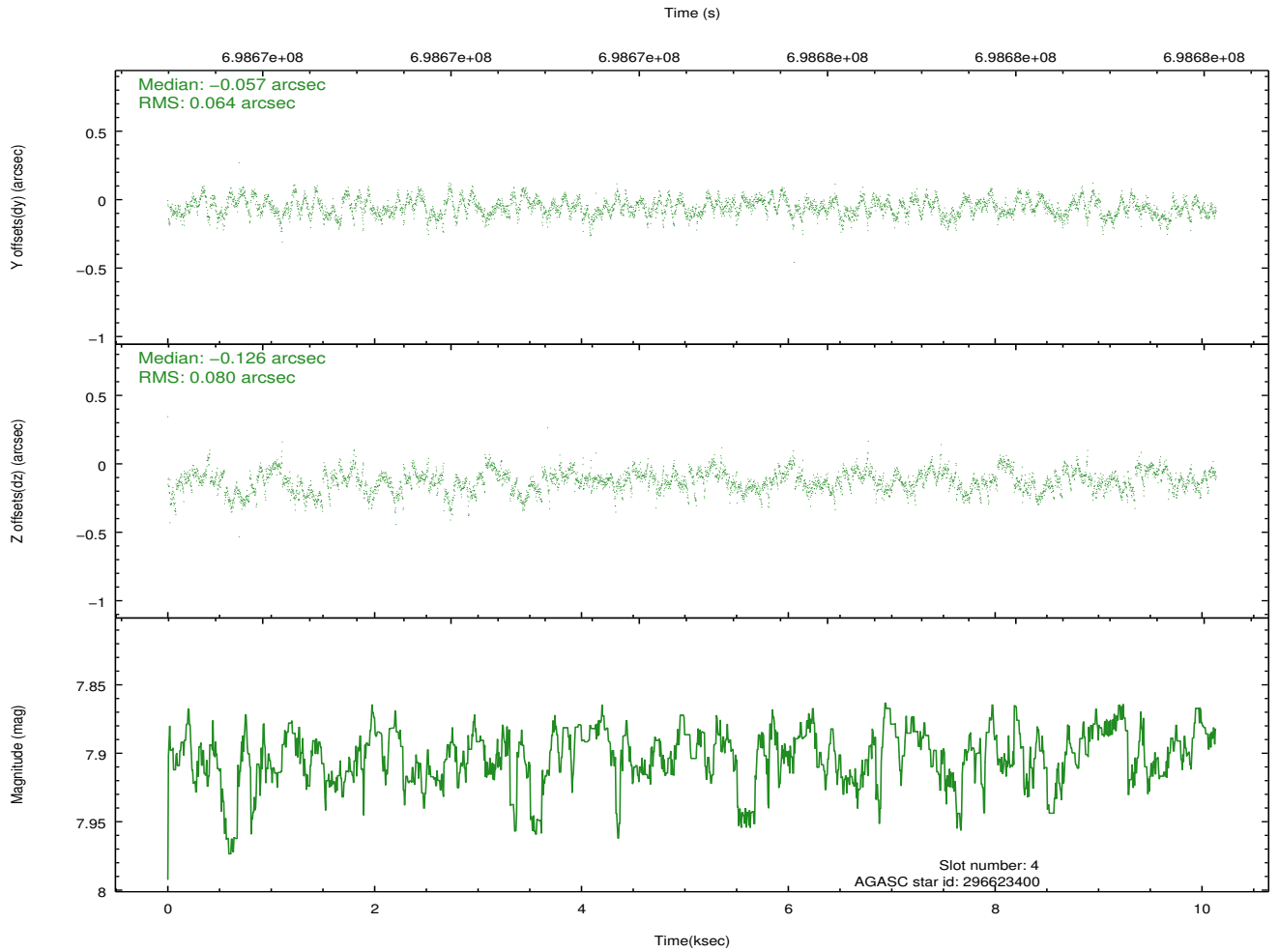
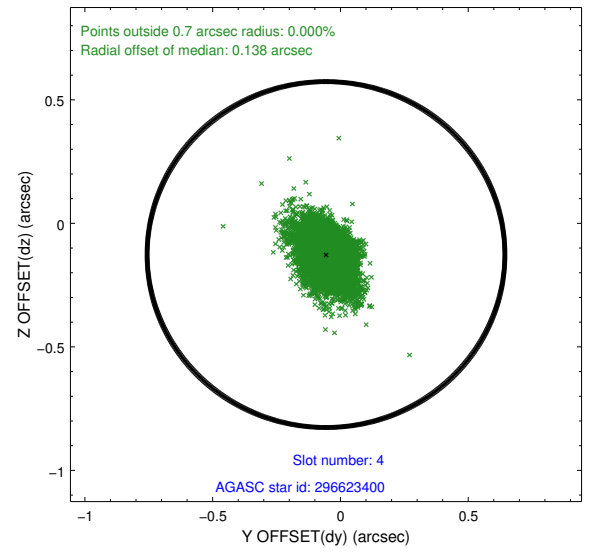
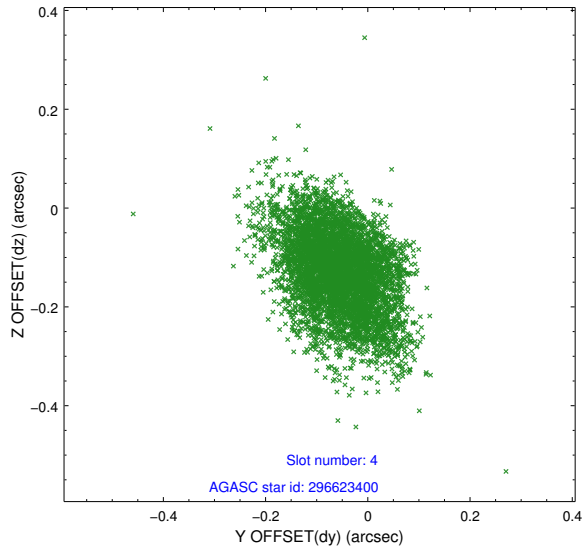
pt	status	used	id	mag	n_pts	frac_pts	med_dy	med_dz	dr1	dr2	ra	dec	mean_y	mea
0	FID		ACIS-S-2	7.11	2473	1.000	-0.327	-0.286	0.014	0.032	0.000000	0.000000	-770.88	-1743
1	FID		ACIS-S-4	7.23	2473	1.000	0.820	0.235	0.020	0.033	0.000000	0.000000	2143.27	164
2	FID		ACIS-S-5	7.18	2472	1.000	-0.525	0.060	0.013	0.020	0.000000	0.000000	-1823.29	158
3	GUIDE	used	296623184	7.94	4943	1.000	-0.250	-0.219	0.111	0.175	0.228216	32.825647	270.95	336
4	GUIDE	used	296623400	7.90	4943	1.000	-0.057	-0.126	0.107	0.179	0.317886	33.155794	-110.96	1493
5	GUIDE	used	296623736	9.11	4941	1.000	-0.130	-0.487	0.187	0.327	0.825954	32.845855	1780.35	1336
6	GUIDE	used	363335008	8.42	4944	1.000	0.163	0.602	0.184	0.327	359.541192	32.275247	-500.79	-2432
7	GUIDE	used	363335320	7.15	4943	1.000	0.273	0.249	0.142	0.225	359.705155	32.381698	-268.28	-1849

2.4 Star Slots

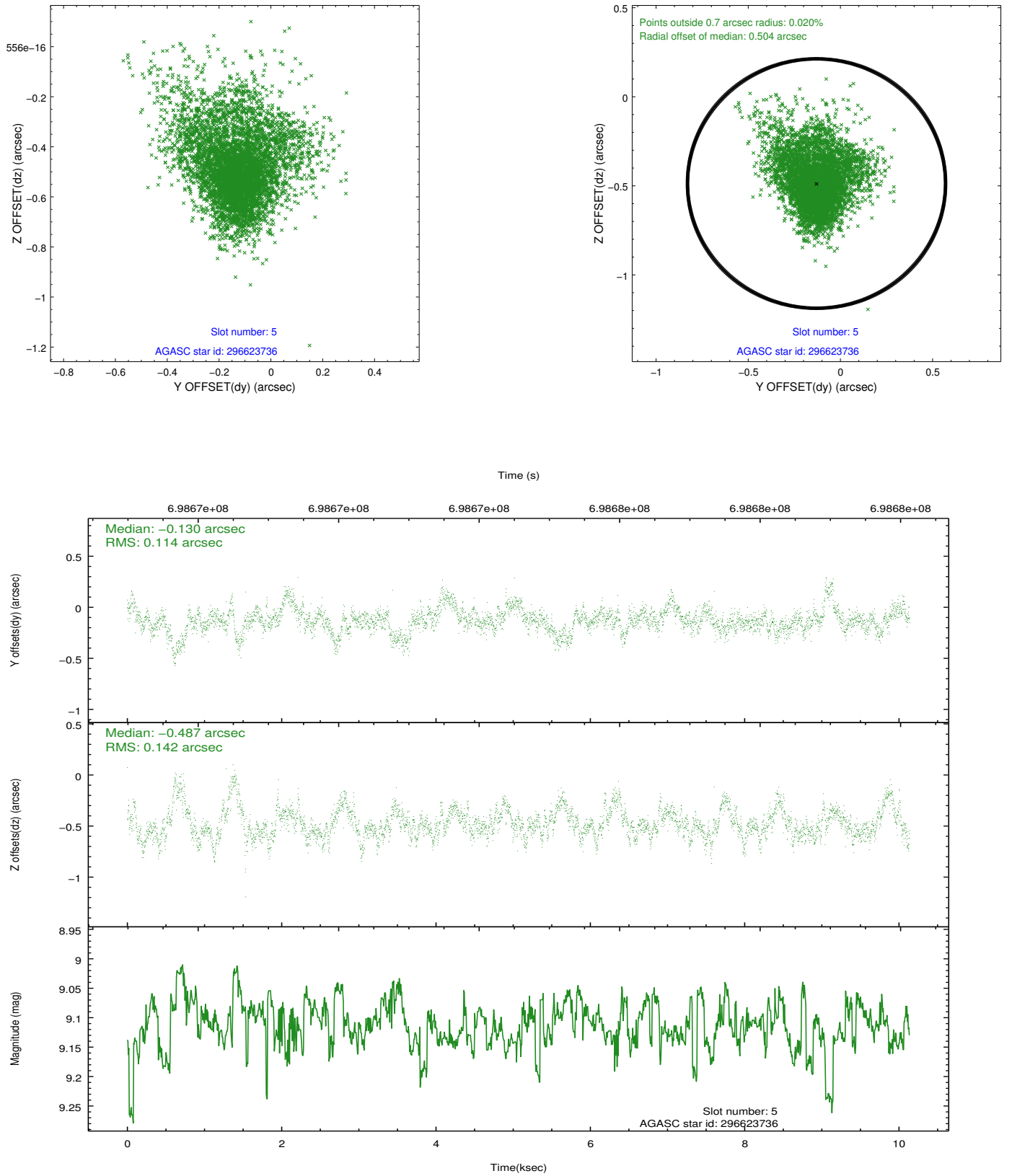
2.4.1 Slot 3



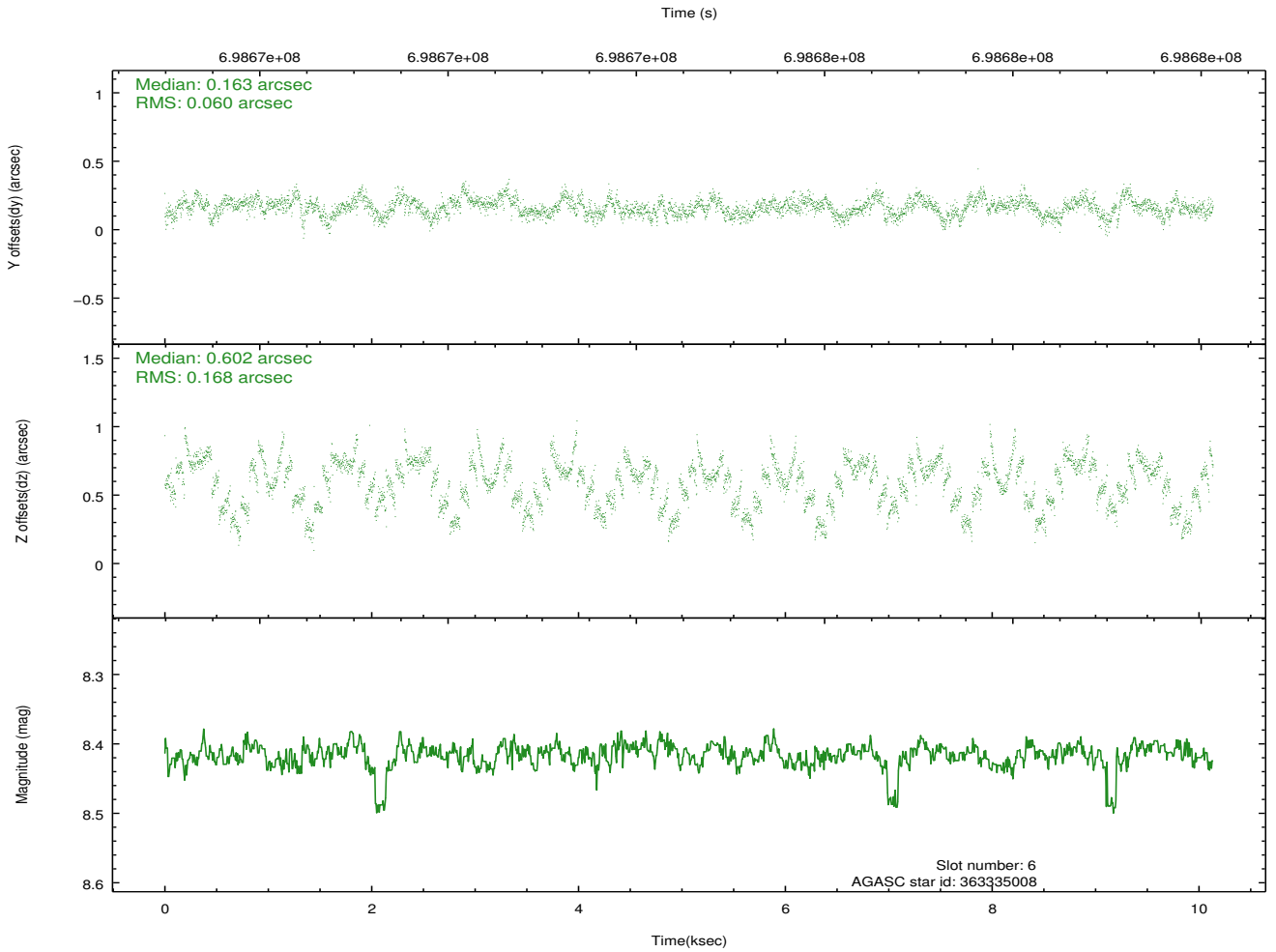
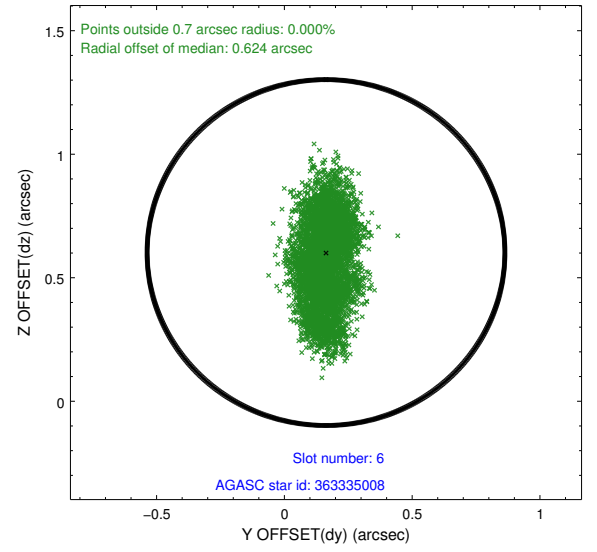
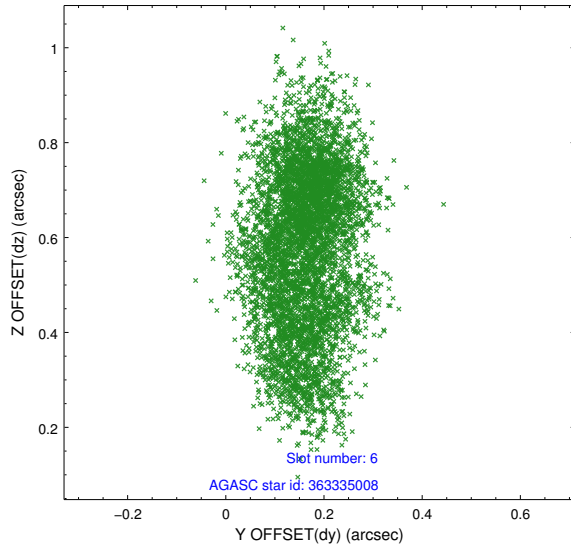
2.4.2 Slot 4



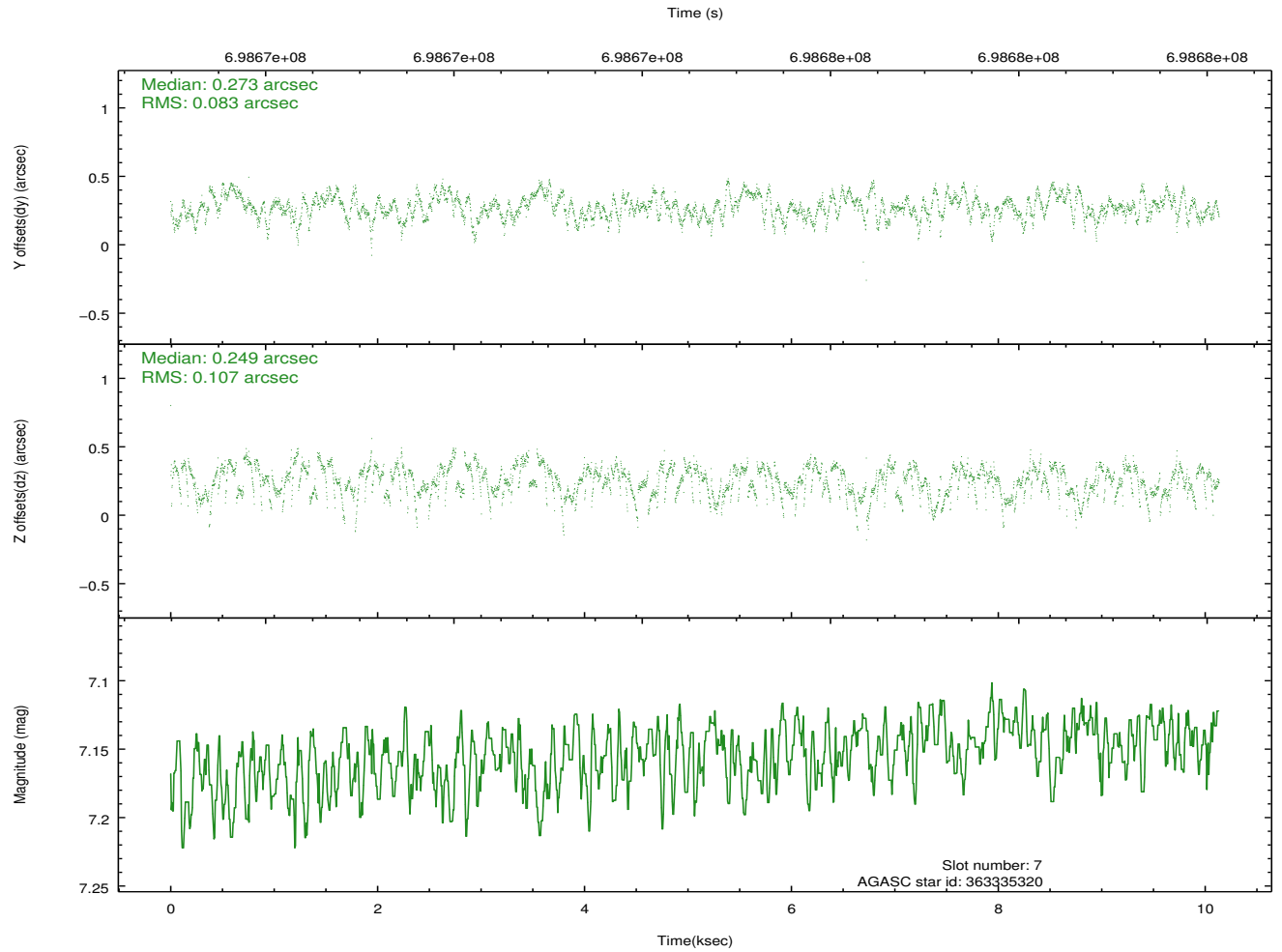
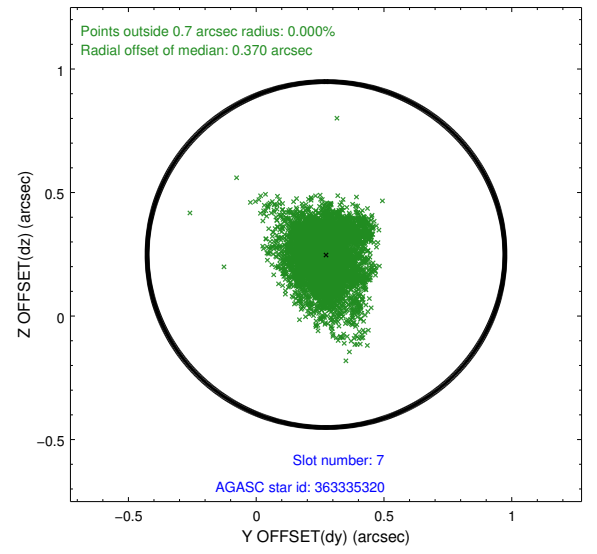
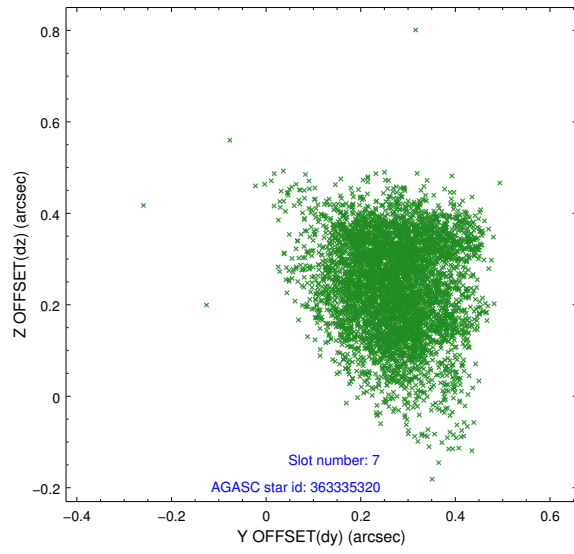
2.4.3 Slot 5



2.4.4 Slot 6

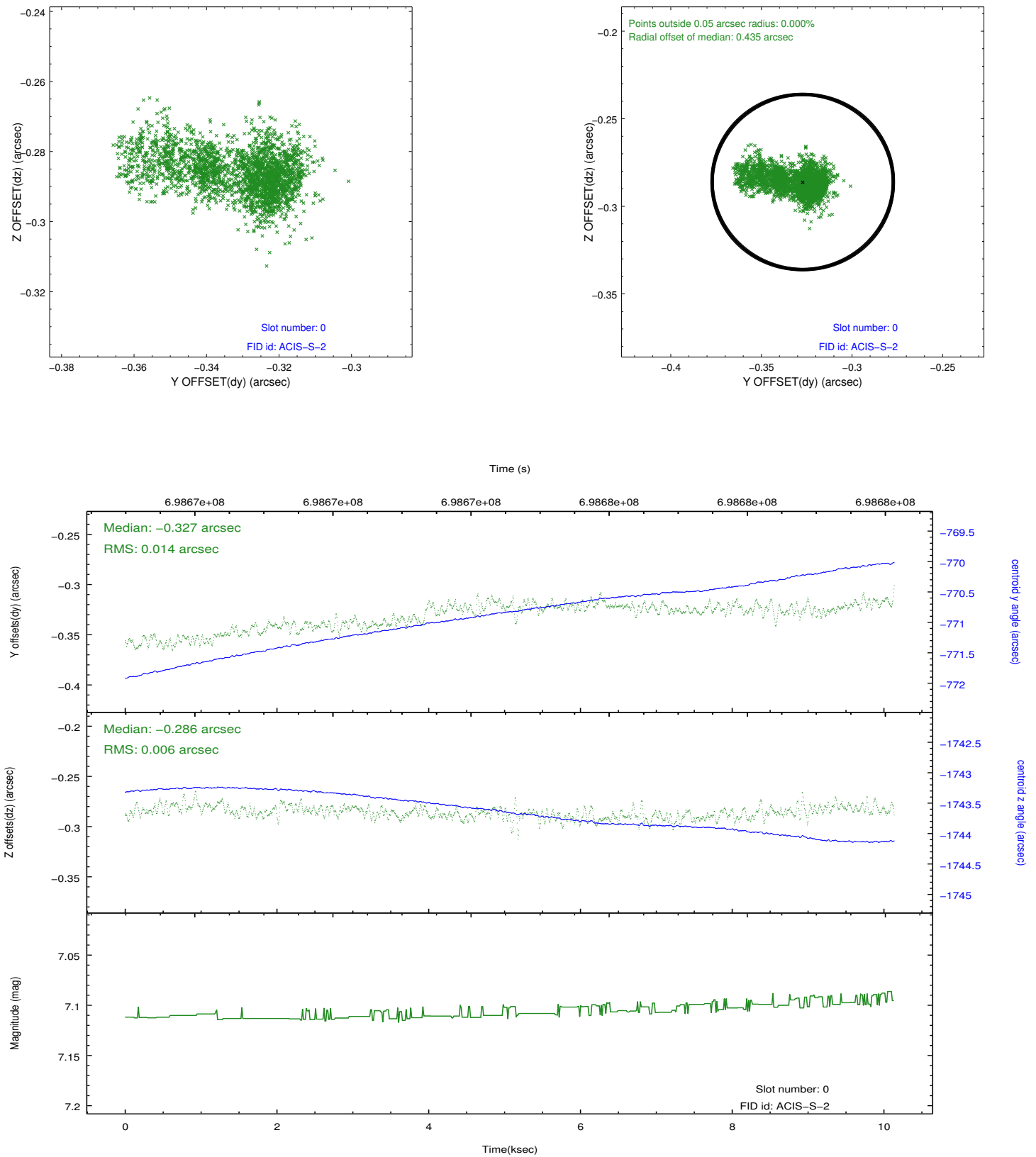


2.4.5 Slot 7

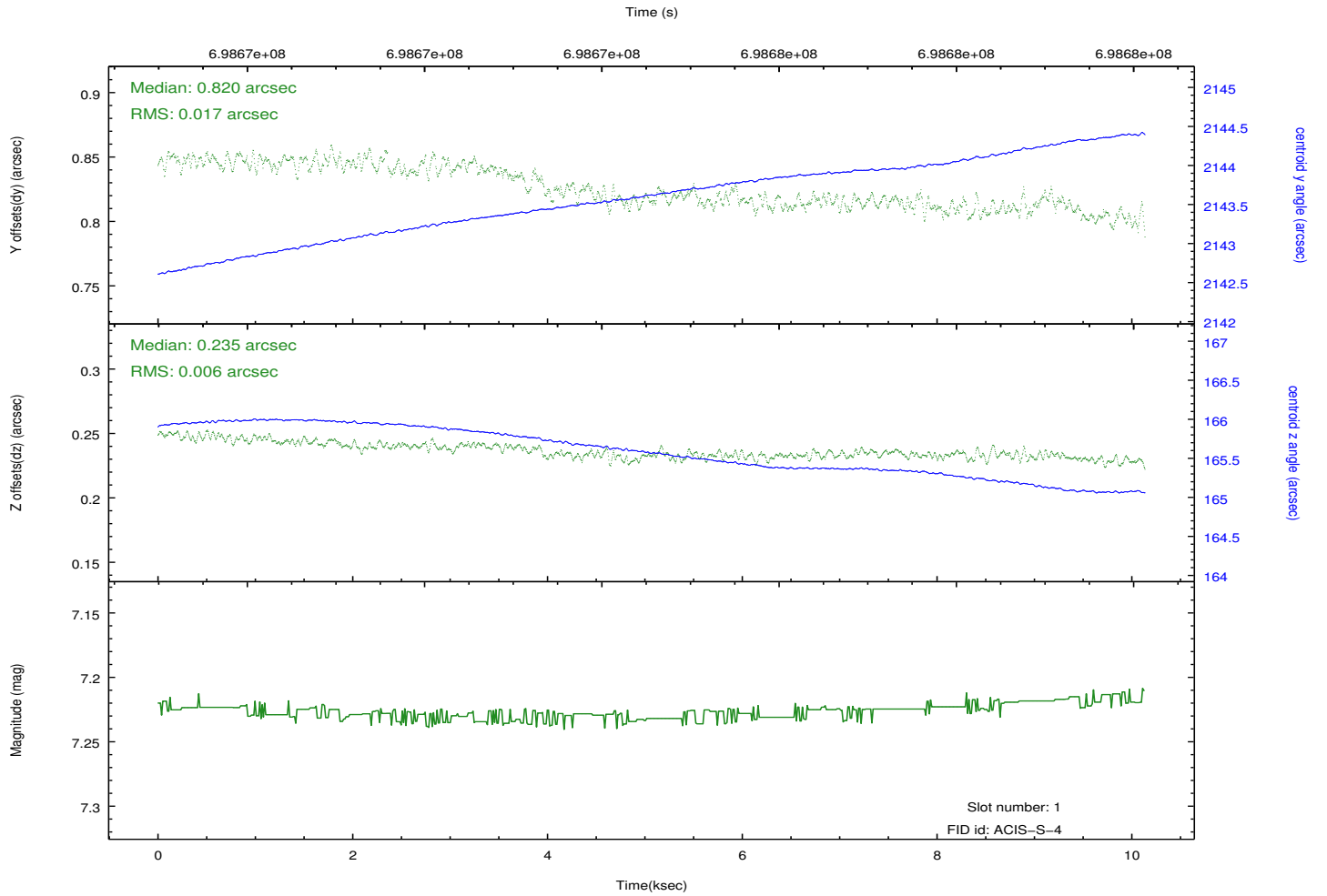
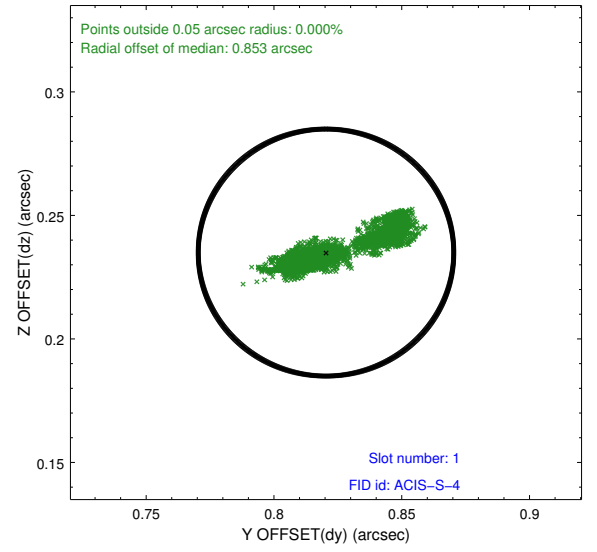
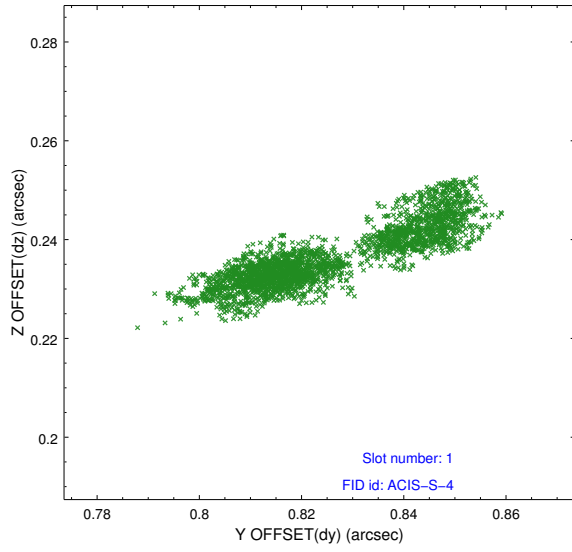


2.5 FID Slots

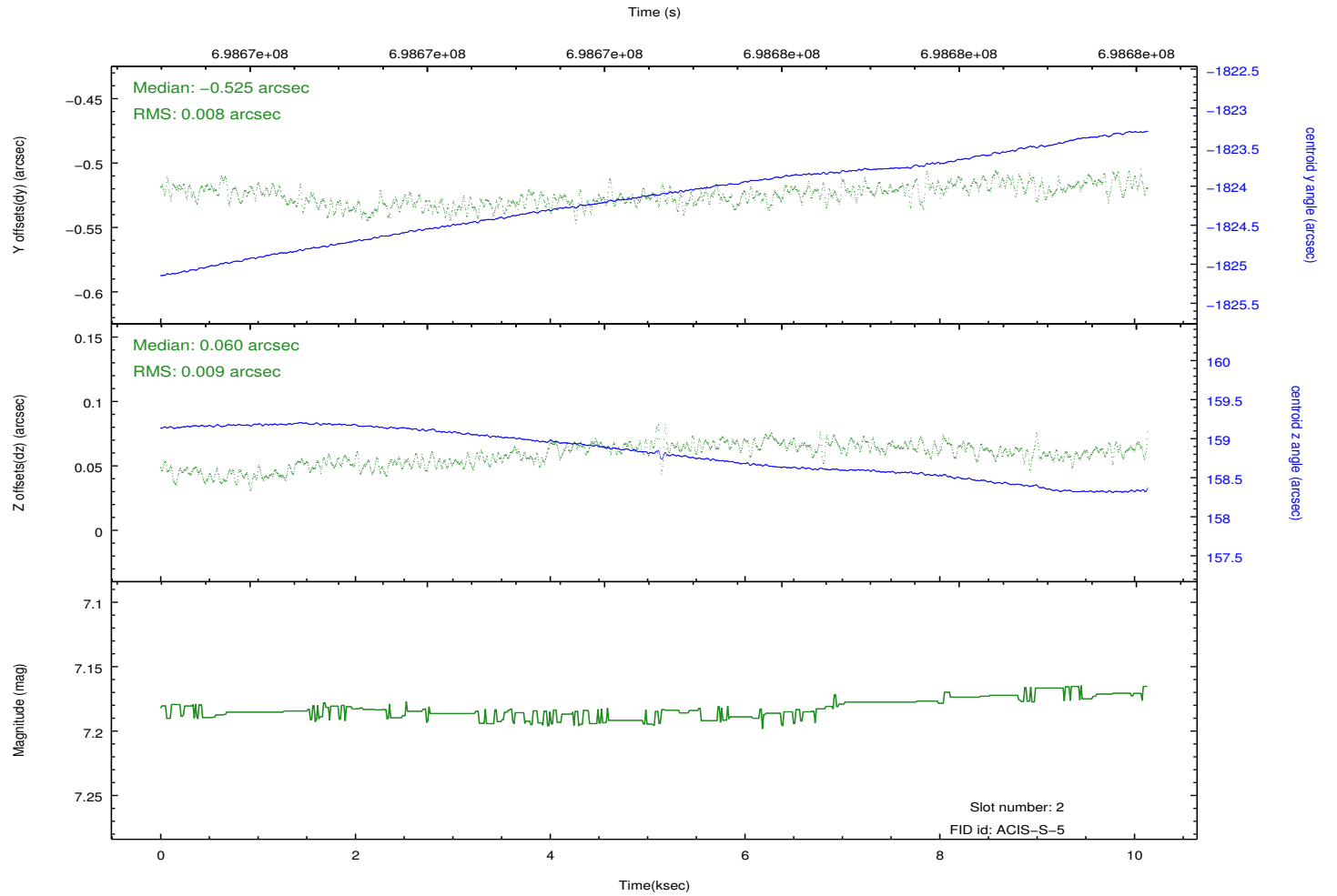
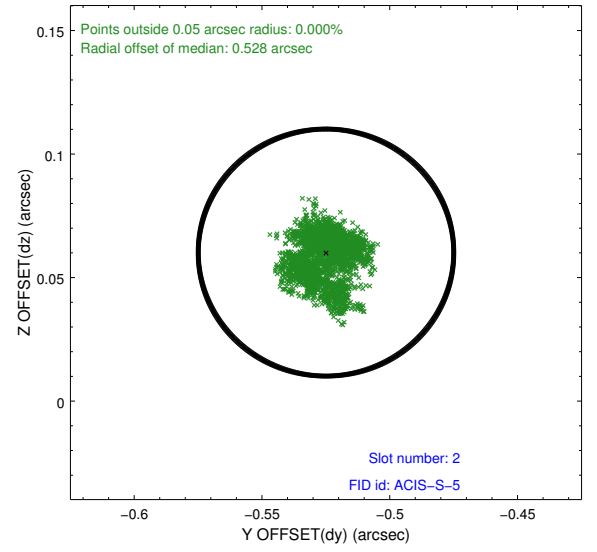
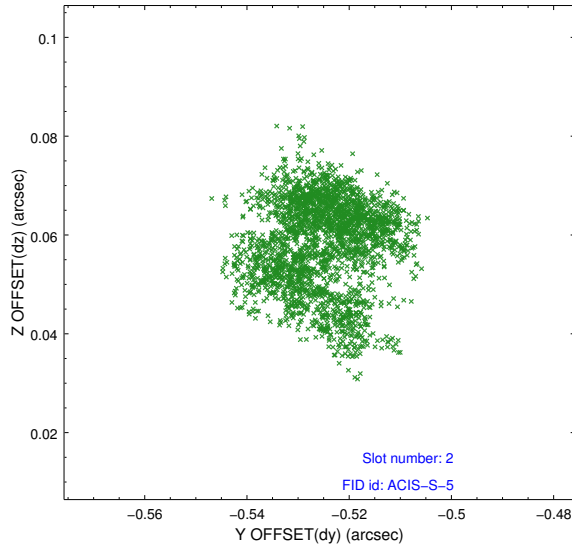
2.5.1 Slot 0



2.5.2 Slot 1



2.5.3 Slot 2



A Summary

A.1 Status

V&V Scientist	Beth Sundheim
V&V Date (YYYY-MM-DD)	2020.02.24
V&V Edition	1
V&V Disposition and Status	OK
V&V Charge Time	10.059500077486

A.2 Comments