

V&V Reference Report

L2 ASCDS Version : 10.8

Observation 22679 - L2 Version 1
Chandra X-Ray Center

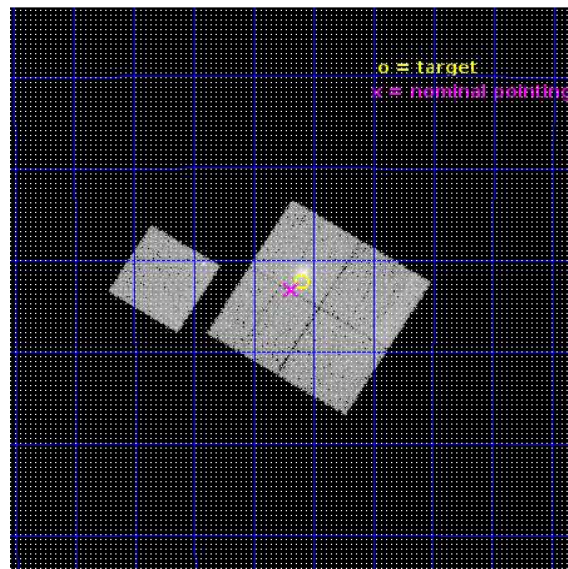
L2 Processing Date : Aug 3 2019

Contents

1	Front	2
2	OBI	3
2.1	OBI	3
2.1.1	Images	3
2.1.2	Bias	3
2.1.3	Parameters	4
2.1.4	Events	4
2.2	Compared Parameters	5
2.3	Aspect	6
2.4	Star Slots	9
2.4.1	Slot 3	9
2.4.2	Slot 4	10
2.4.3	Slot 5	11
2.4.4	Slot 6	12
2.4.5	Slot 7	13
2.5	FID Slots	14
2.5.1	Slot 0	14
2.5.2	Slot 1	15
2.5.3	Slot 2	16
A	Summary	17
A.1	Status	17
A.2	Comments	17

1 Front

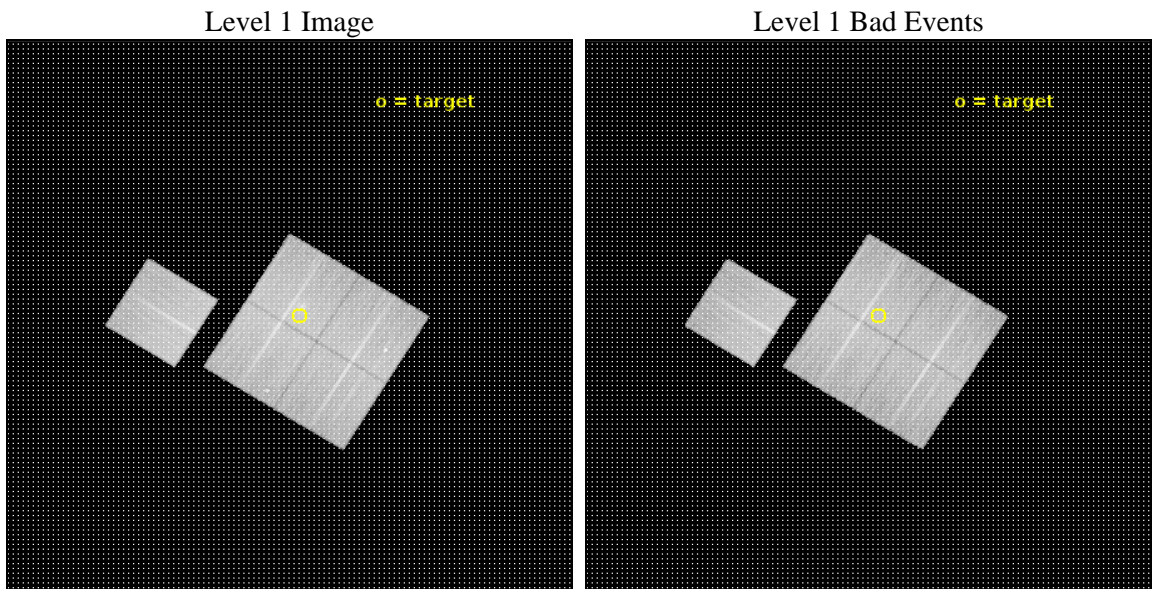
seq_num	703830	Sequence number
obs_id	22679	Observation id
title	X-ray Emission from z=6 galaxies	Proposal title
observer	Ralph Kraft	Principal investigator
object	PLCKG004-19	Source name
dtcycle	0	
cycle	P	events from which exps? Prim/Second/Both
ra_targ	289.275417	Observer's specified target RA [deg]
dec_targ	-33.539278	Observer's specified target Dec [deg]
ra_nom	289.29679861116	Nominal RA [deg]
dec_nom	-33.554424840423	Nominal Dec [deg]
roll_nom	301.72050039676	Nominal Roll [deg]
revision	1	Processing version of data
ontime	27067.747910023	Sum of GTIs [s]
livetime	26714.087856592	Livetime [s]
ontime0	27070.765860319	Sum of GTIs [s]
ontime1	27070.806900263	Sum of GTIs [s]
ontime2	27067.706950188	Sum of GTIs [s]
ontime3	27067.747910023	Sum of GTIs [s]
ontime6	27064.442799926	Sum of GTIs [s]
l2events	105835	Number of level 2 events



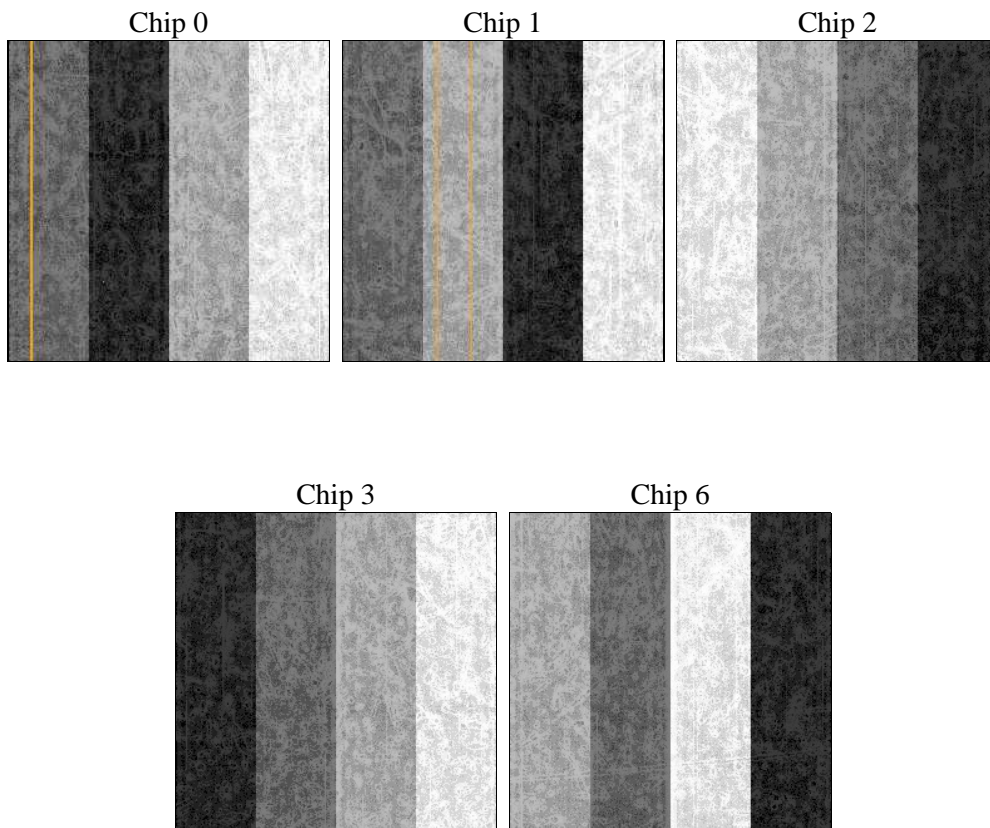
2 OBI

2.1 OBI

2.1.1 Images



2.1.2 Bias



2.1.3 Parameters

obi_num	0	Obi number	sched_exp_time	27000.000000	[s] Scheduled observation exposure time
ascdsver	10.8	Processing system revision	ontime	27067.747910023	Sum of GTIs [s]
caldsver	4.8.3.1	 	ontime0	27070.765860319	Sum of GTIs [s]
date	2019-08-03T21:15:47	Date and time of file creation	ontime1	27070.806900263	Sum of GTIs [s]
revision	1	Processing version of data	ontime2	27067.706950188	Sum of GTIs [s]
			ontime3	27067.747910023	Sum of GTIs [s]
			ontime6	27064.442799926	Sum of GTIs [s]
			l1events	1026668	Number of level 1 events

2.1.4 Events

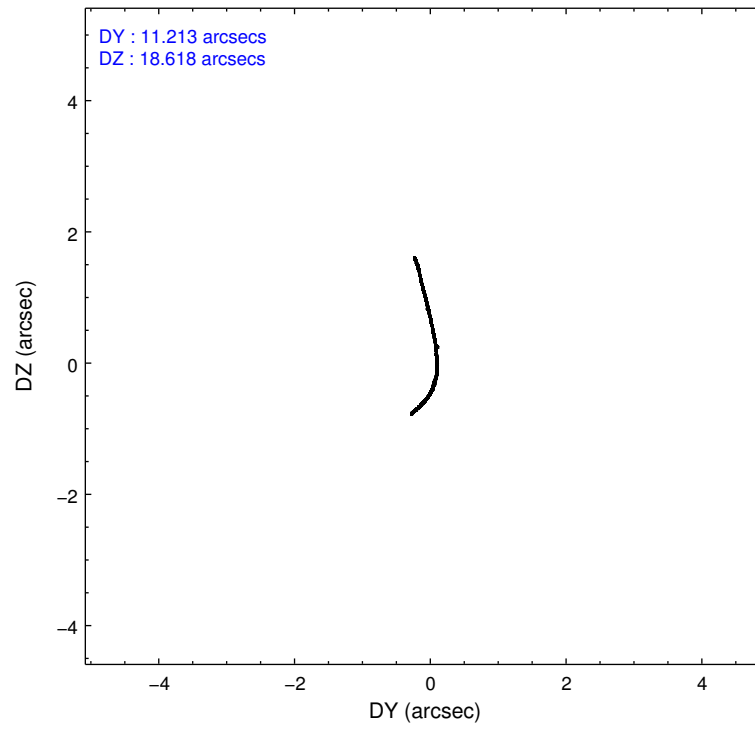
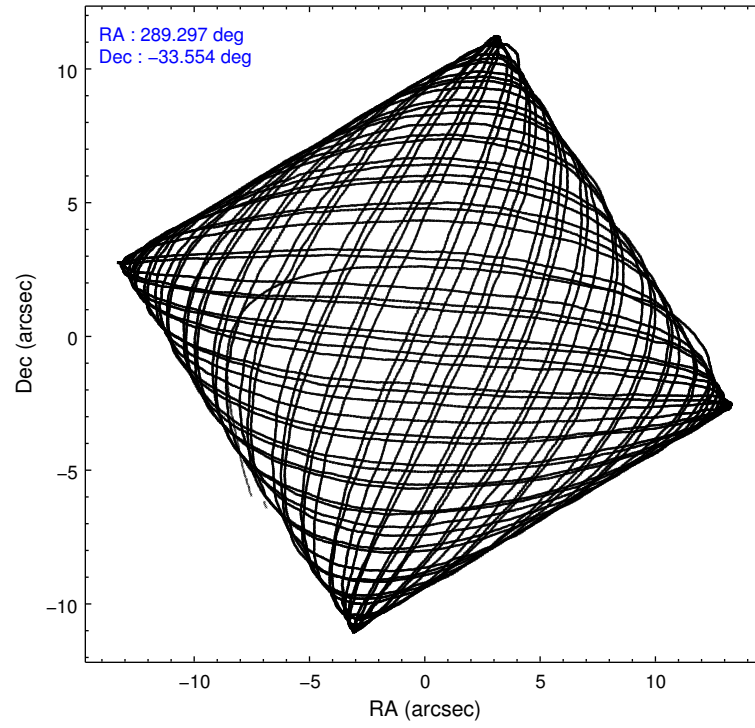
	ccd 0	ccd 1	ccd 2	ccd 3	ccd 6		ccd 0	ccd 1	ccd 2	ccd 3	ccd 6
level 1 events	189389	198732	211702	211724	215121	grade 0 events	8007	10101	9497	12526	7907
rejected events	165749	171553	187193	183502	191656		4%	5%	4%	5%	3%
rejected %	87%	86%	88%	86%	89%	grade 1 events	139	121	129	153	111
							0%	0%	0%	0%	0%
						grade 2 events	6101	6530	5834	5576	5529
							3%	3%	2%	2%	2%
						grade 3 events	2383	2345	2276	2571	2218
							1%	1%	1%	1%	1%
						grade 4 events	2205	2355	2291	2507	2150
							1%	1%	1%	1%	0%
						grade 5 events	9123	9357	8800	10178	9496
							4%	4%	4%	4%	4%
						grade 6 events	4947	5857	4619	5050	5664
							2%	2%	2%	2%	2%
						grade 7 events	156484	162066	178256	173163	182046
							82%	81%	84%	81%	84%

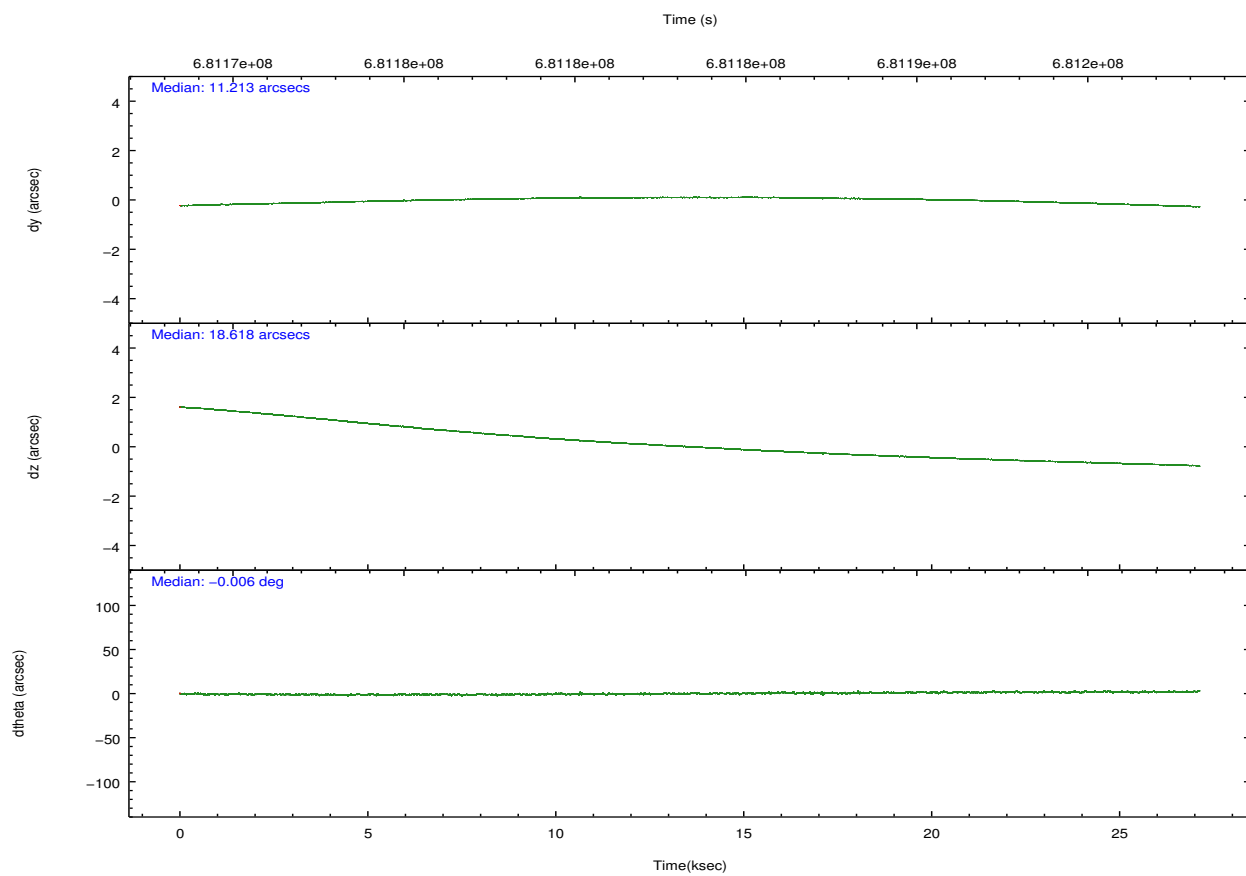
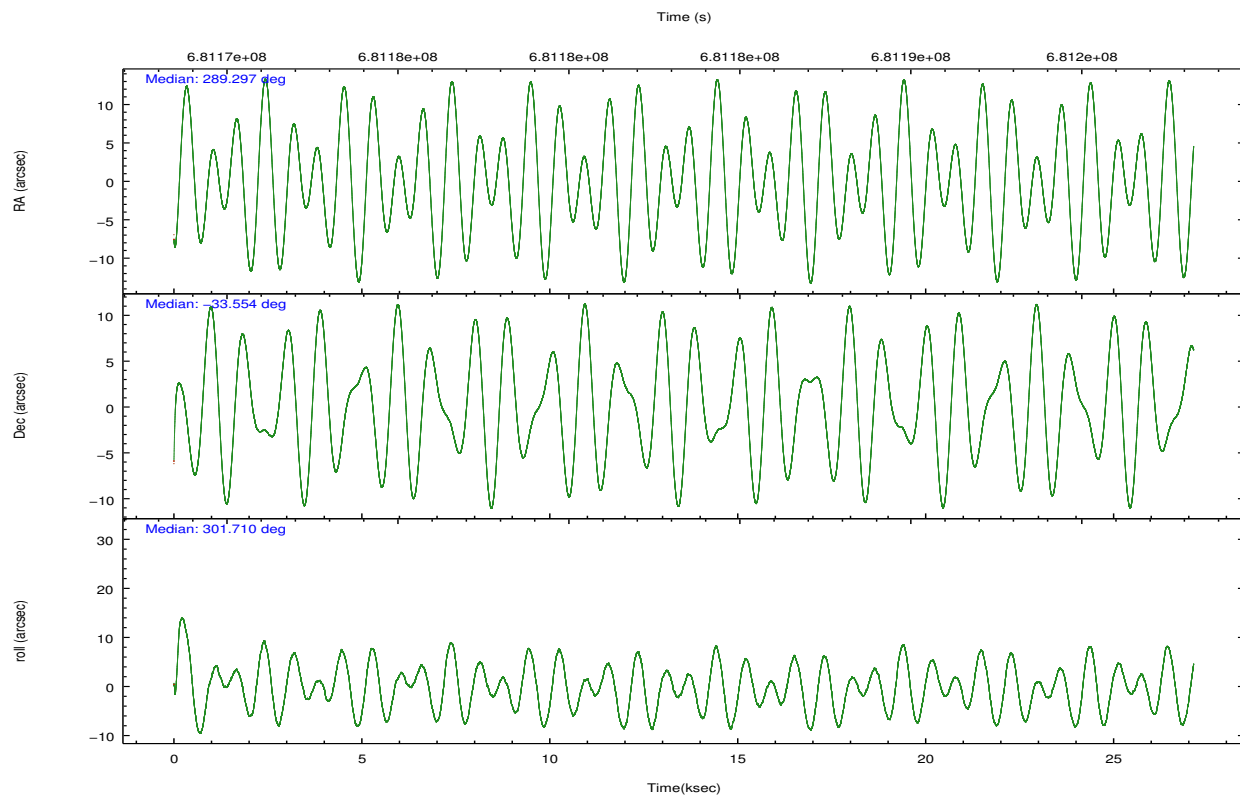
2.2 Compared Parameters

Parameter	Planned	Actual
Instrument	ACIS	ACIS
Detector	ACIS-01236	ACIS-01236
Grating	NONE	NONE
Data mode	VFAINT	VFAINT
Observation mode	POINTING	POINTING
[deg] Pointing RA	289.267589	289.2967986111615
[deg] Pointing Dec	-33.541436	-33.55442484042282
[deg] Pointing Roll	301.495674	301.7205003967639
[mm] SIM focus pos	-0.782348	-0.7809083437167272
[mm] SIM defocus	0	0.001439871863259334
[mm] SIM translation stage pos	-225.842463	-225.8433433320239
[mm] SIM translation stage offset	-7.75	-7.749109670905796
[s] Observation start time (MET)	681169941.184000	681168645.4937299
Observation start date	2019-08-02T21:51:12	2019-08-02T21:30:45
[s] Observation end time (MET)	681196941.184000	681198480.68303
Observation end date	2019-08-03T05:21:12	2019-08-03T05:48:00
Read mode	TIMED	TIMED

Parameter	Planned	Actual
Obspar format version number	7	7
Obspar file type	PREDICTED	ACTUAL
Obspar update status	NONE	UPDATED
CCD I0 on	Y	Y
CCD I1 on	Y	Y
CCD I2 on	Y	Y
CCD I3 on	Y	Y
CCD S0 on	N	N
CCD S1 on	N	N
CCD S2 on	O1	Y
CCD S3 on	N	N
CCD S4 on	N	N
CCD S5 on	N	N
Number of optional ACIS chips dropped	0	0
On-chip summing requested	N	N
Subarray requested	NONE	NONE
Alternating exposures requested	N	N
[s] Primary exposure time	0.000000	3.1

2.3 Aspect



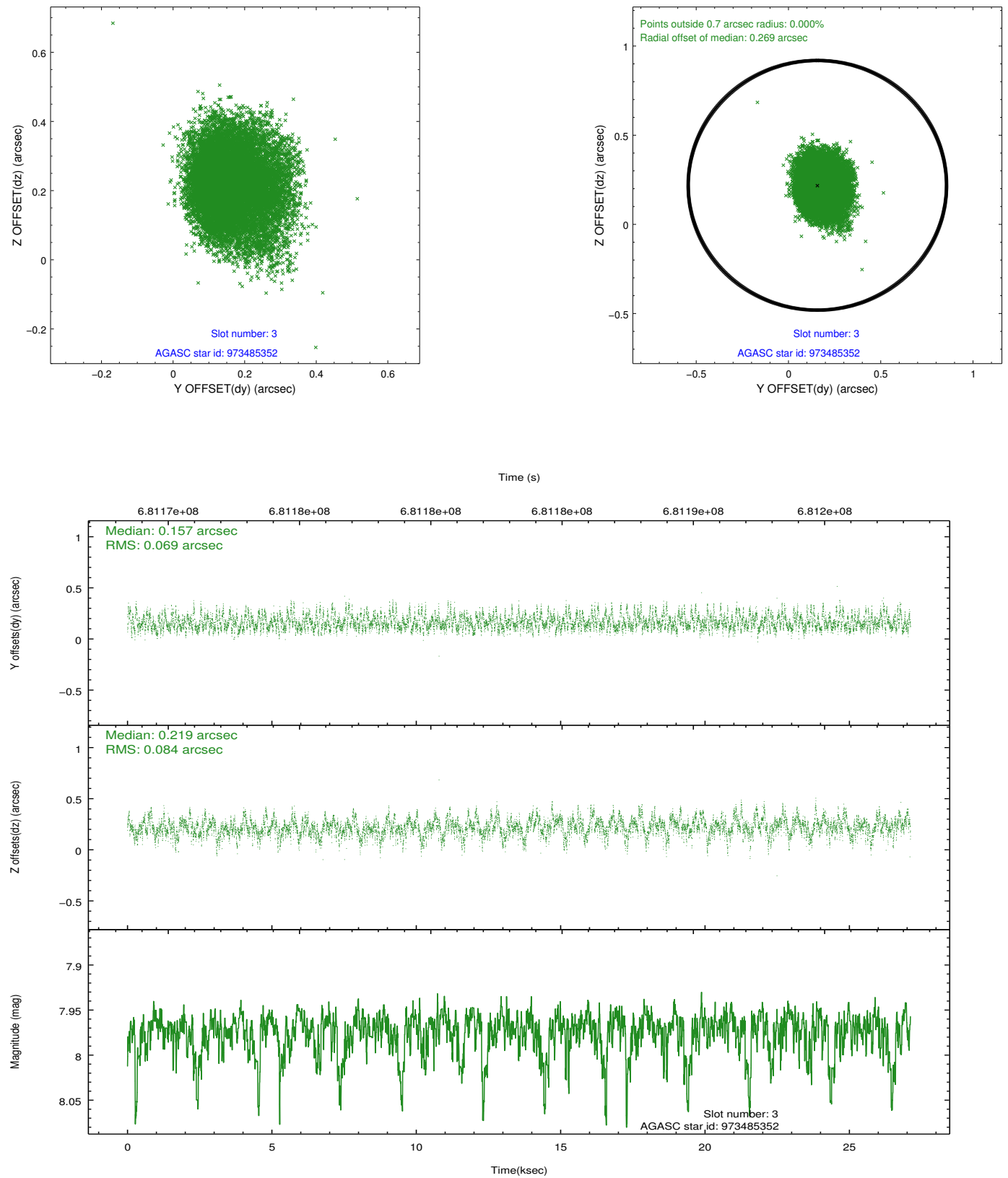


Slot Statistics

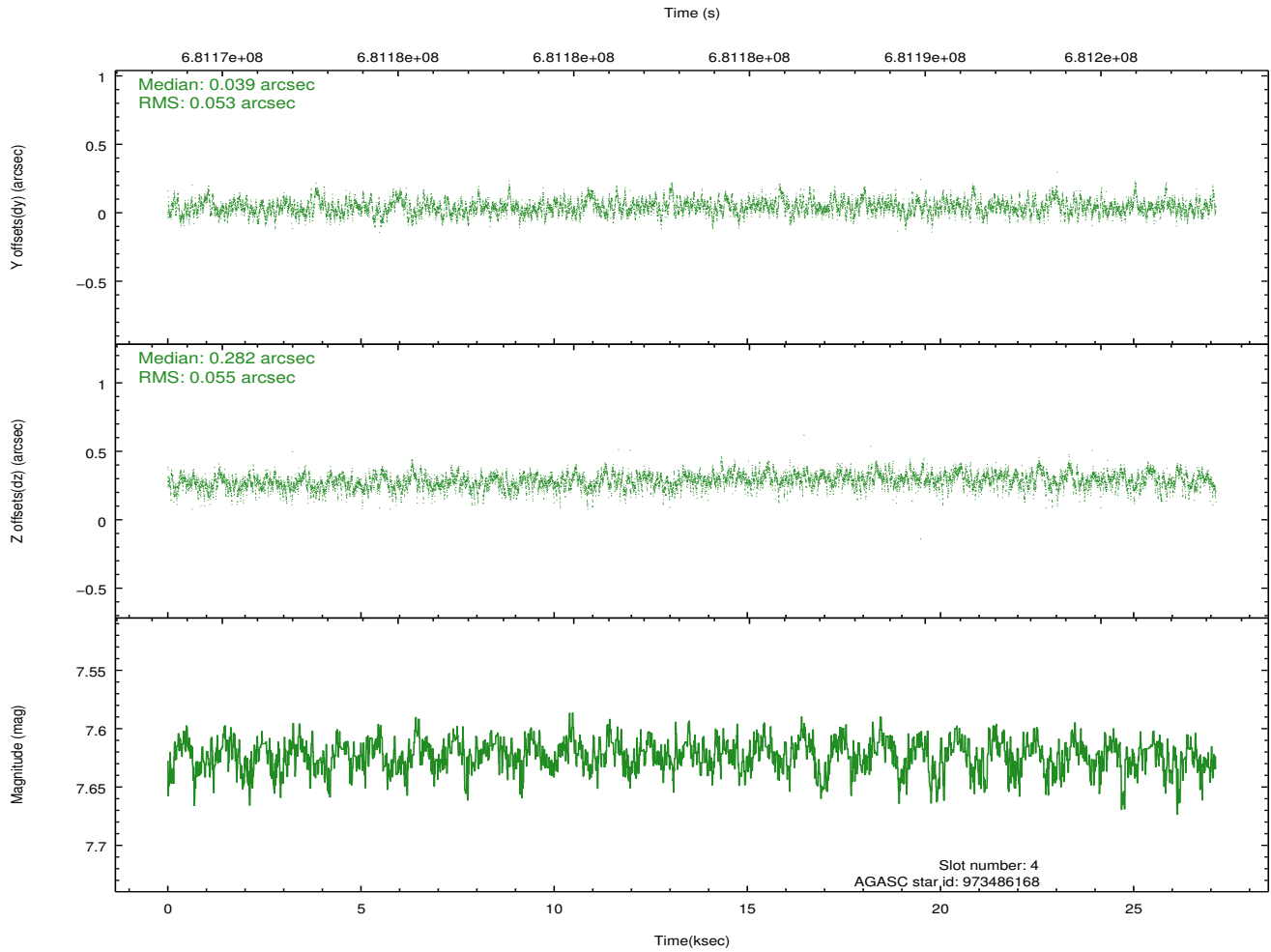
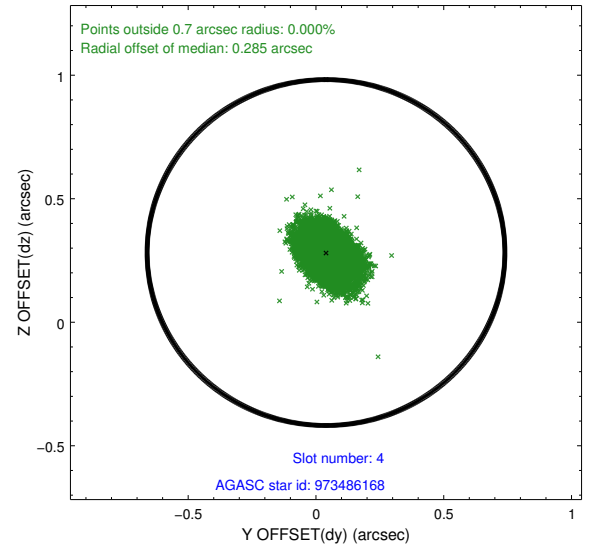
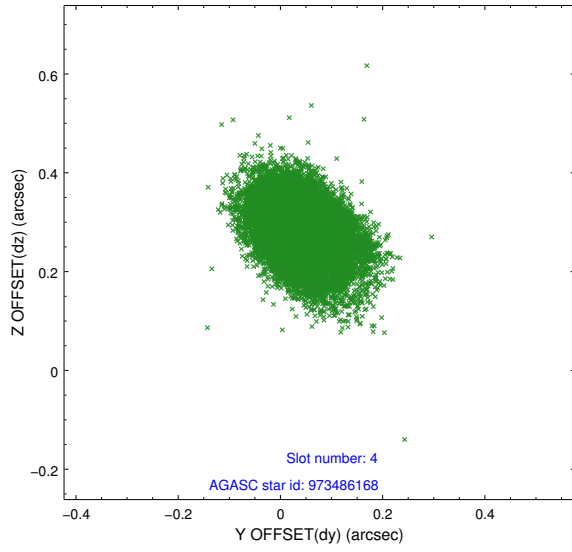
pt	status	used	id	mag	n_pts	frac_pts	med_dy	med_dz	dr1	dr2	ra	dec	mean_y	mea
0	FID		ACIS-I-3	7.32	6618	1.000	-0.031	0.101	0.016	0.025	0.000000	0.000000	45.70	-1134
1	FID		ACIS-I-5	7.12	6618	1.000	-0.379	-0.089	0.015	0.025	0.000000	0.000000	-1820.40	895
2	FID		ACIS-I-6	7.18	6617	1.000	0.318	0.056	0.010	0.020	0.000000	0.000000	393.88	1540
3	GUIDE	used	973485352	7.97	13224	1.000	0.157	0.219	0.114	0.193	288.944715	-33.530485	-537.57	-806
4	GUIDE	used	973486168	7.62	13233	1.000	0.039	0.282	0.080	0.134	288.631927	-33.717967	-446.58	-1958
5	GUIDE	used	973492144	8.11	13226	1.000	-0.027	-0.023	0.109	0.184	289.589593	-33.152311	-685.96	1558
6	GUIDE	used	973996064	7.93	13222	1.000	0.019	-0.031	0.107	0.178	289.115787	-33.809440	586.14	-891
7	GUIDE	used	973483608	8.16	13226	1.000	-0.196	-0.450	0.098	0.156	290.049195	-33.461535	988.42	2147

2.4 Star Slots

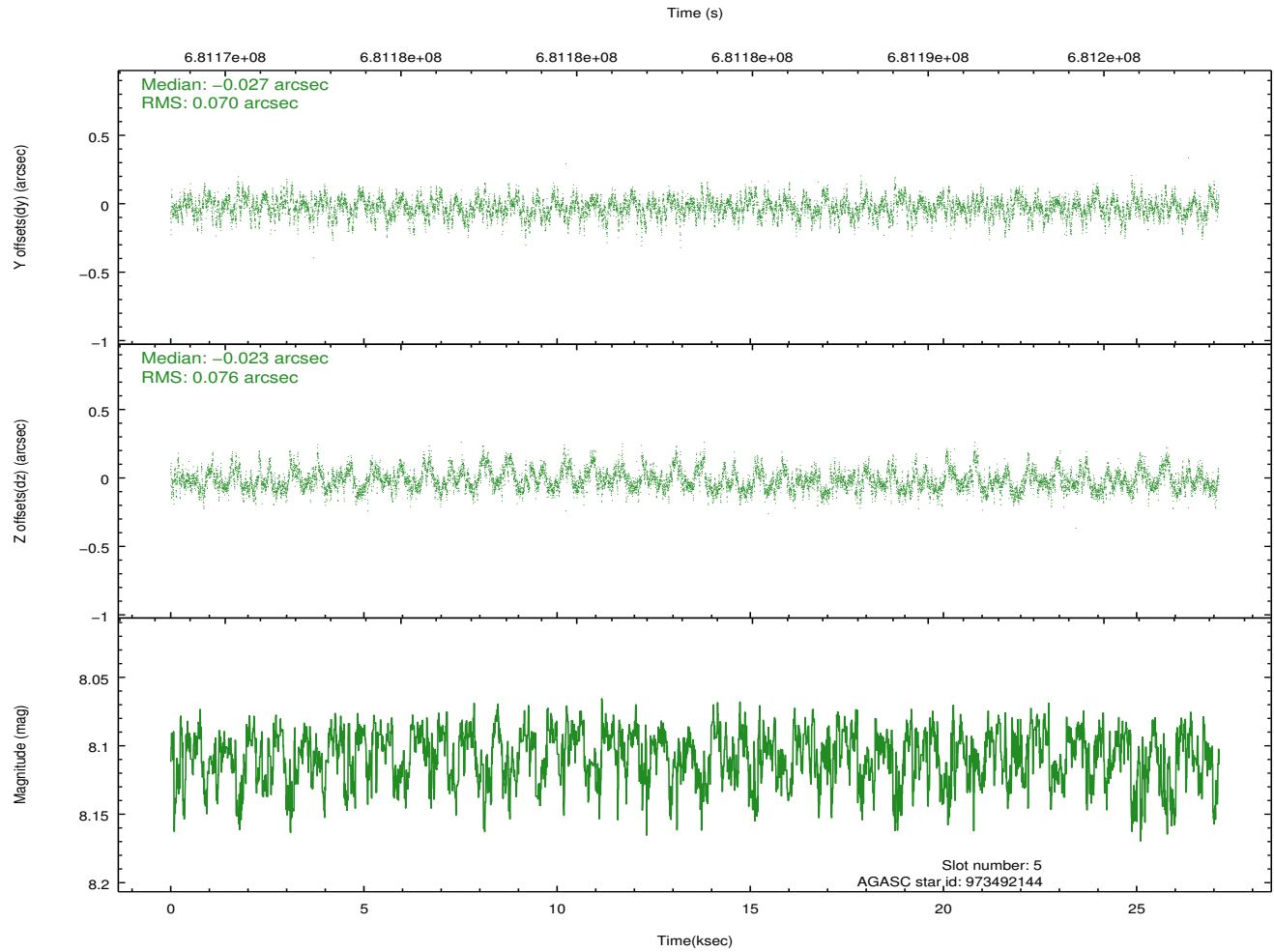
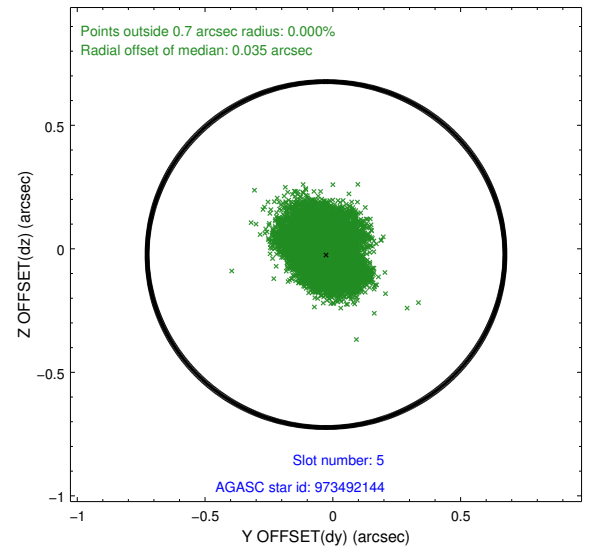
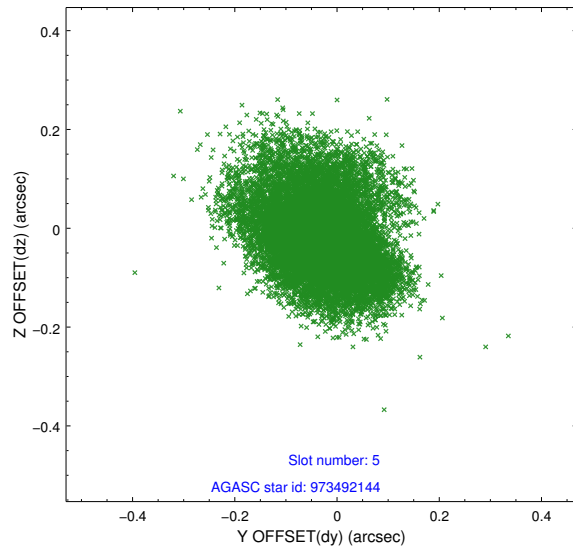
2.4.1 Slot 3



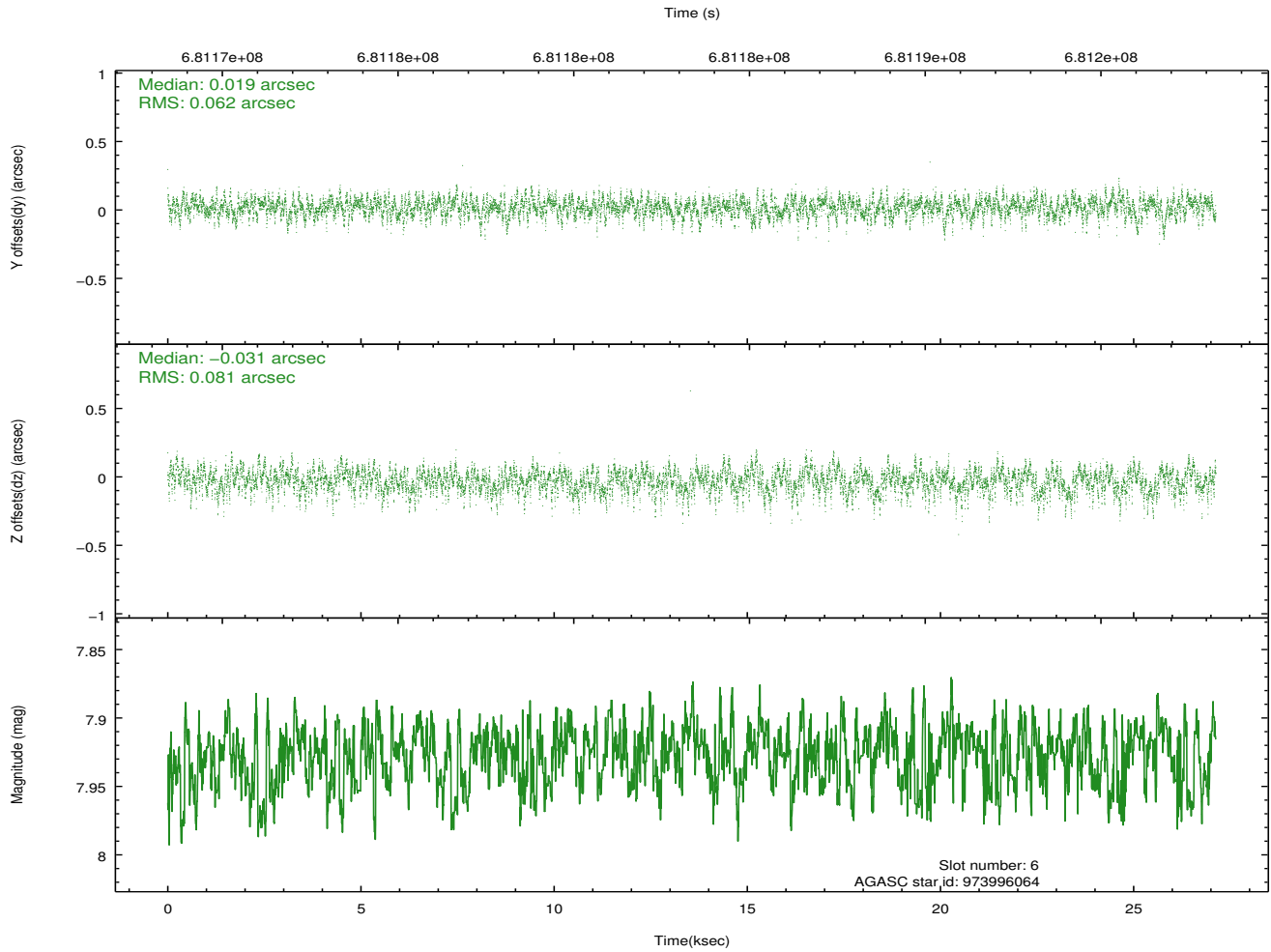
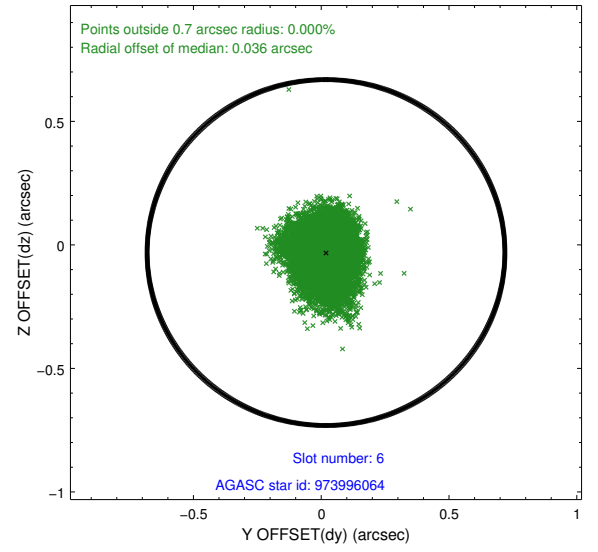
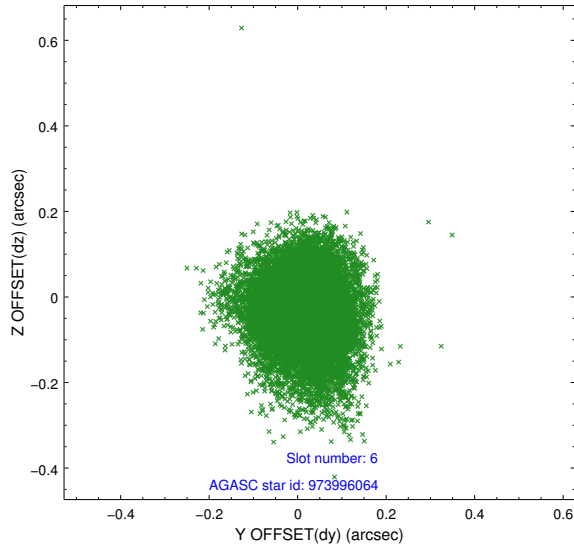
2.4.2 Slot 4



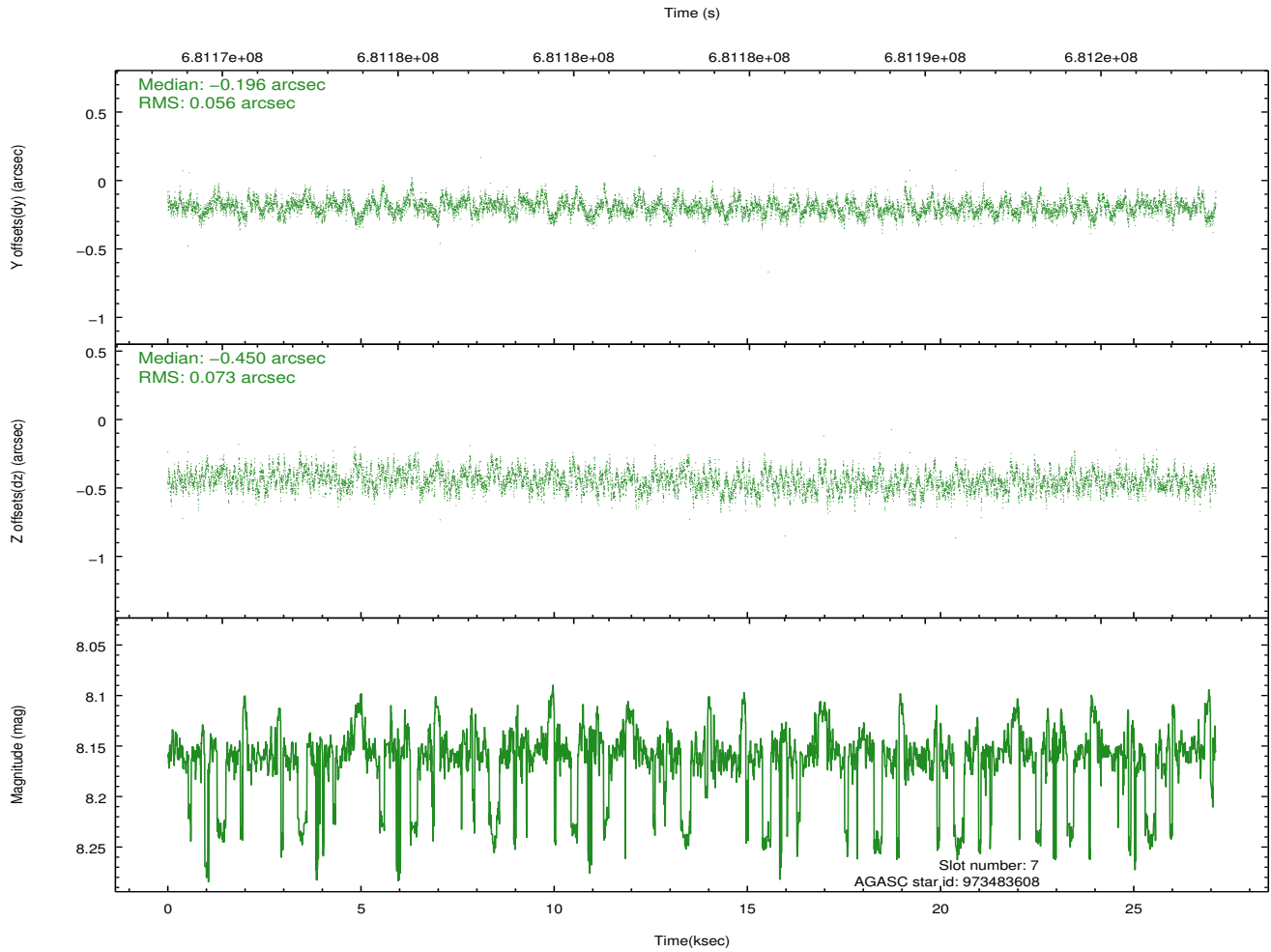
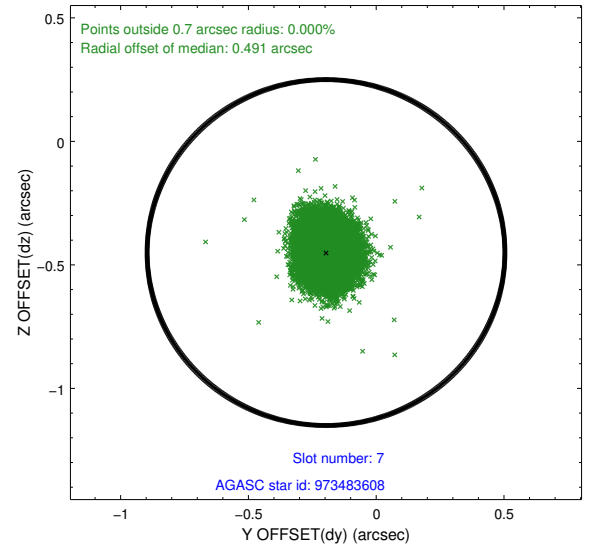
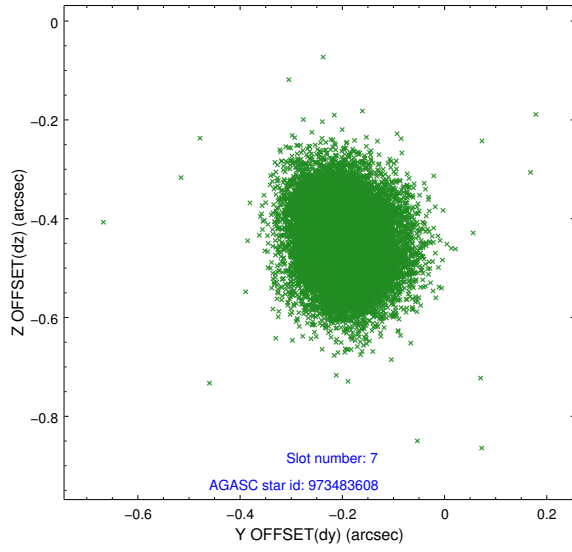
2.4.3 Slot 5



2.4.4 Slot 6

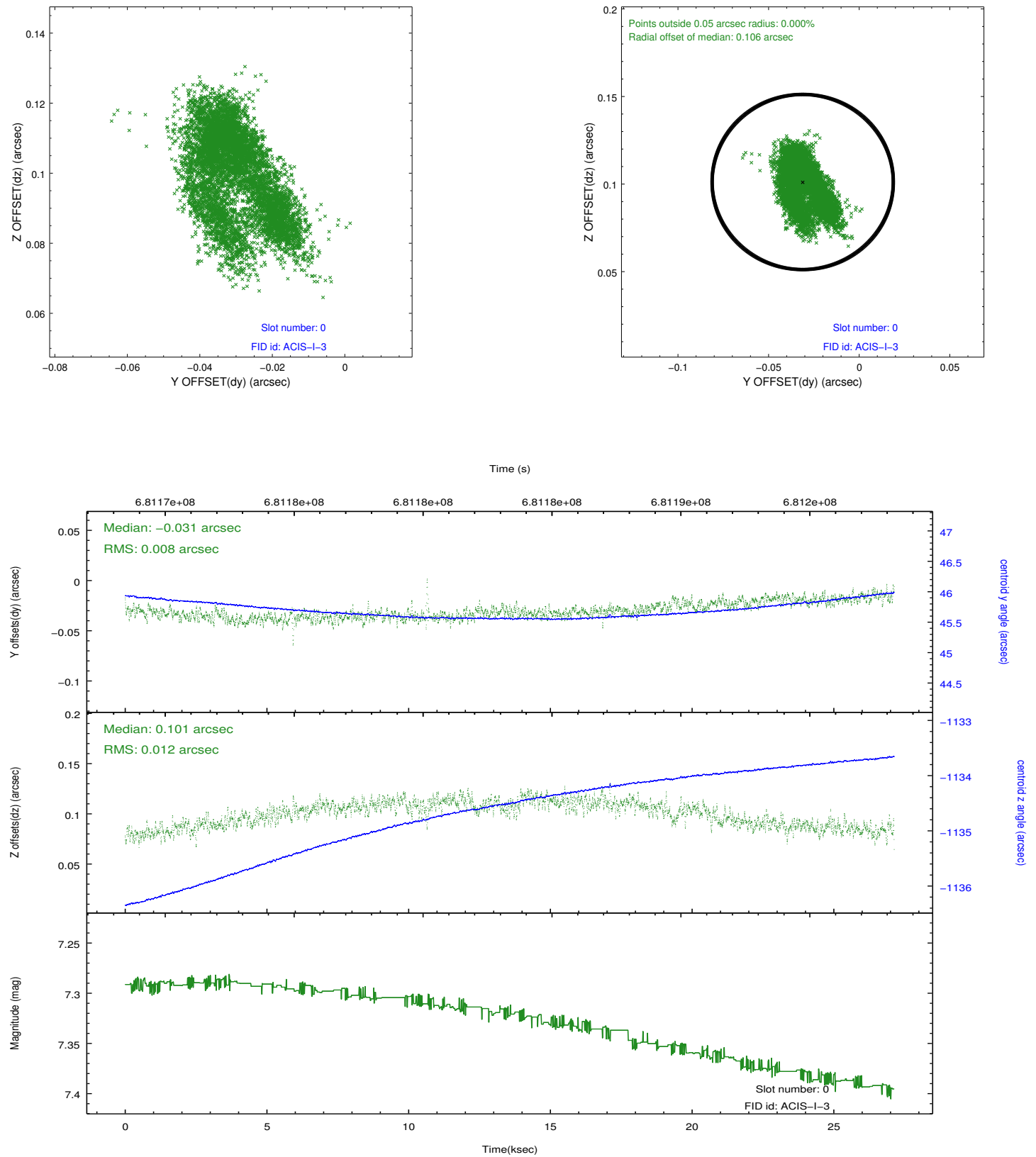


2.4.5 Slot 7

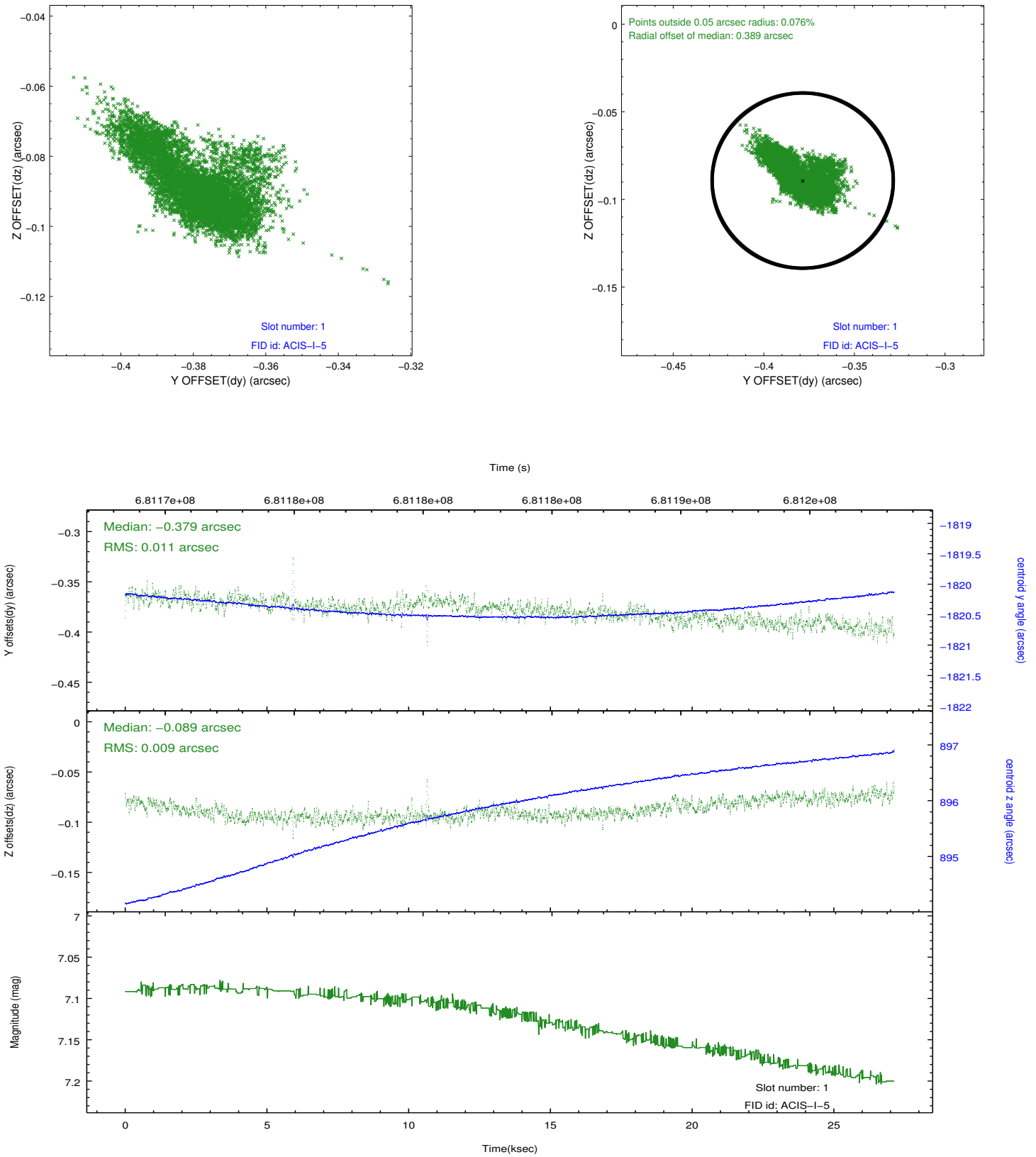


2.5 FID Slots

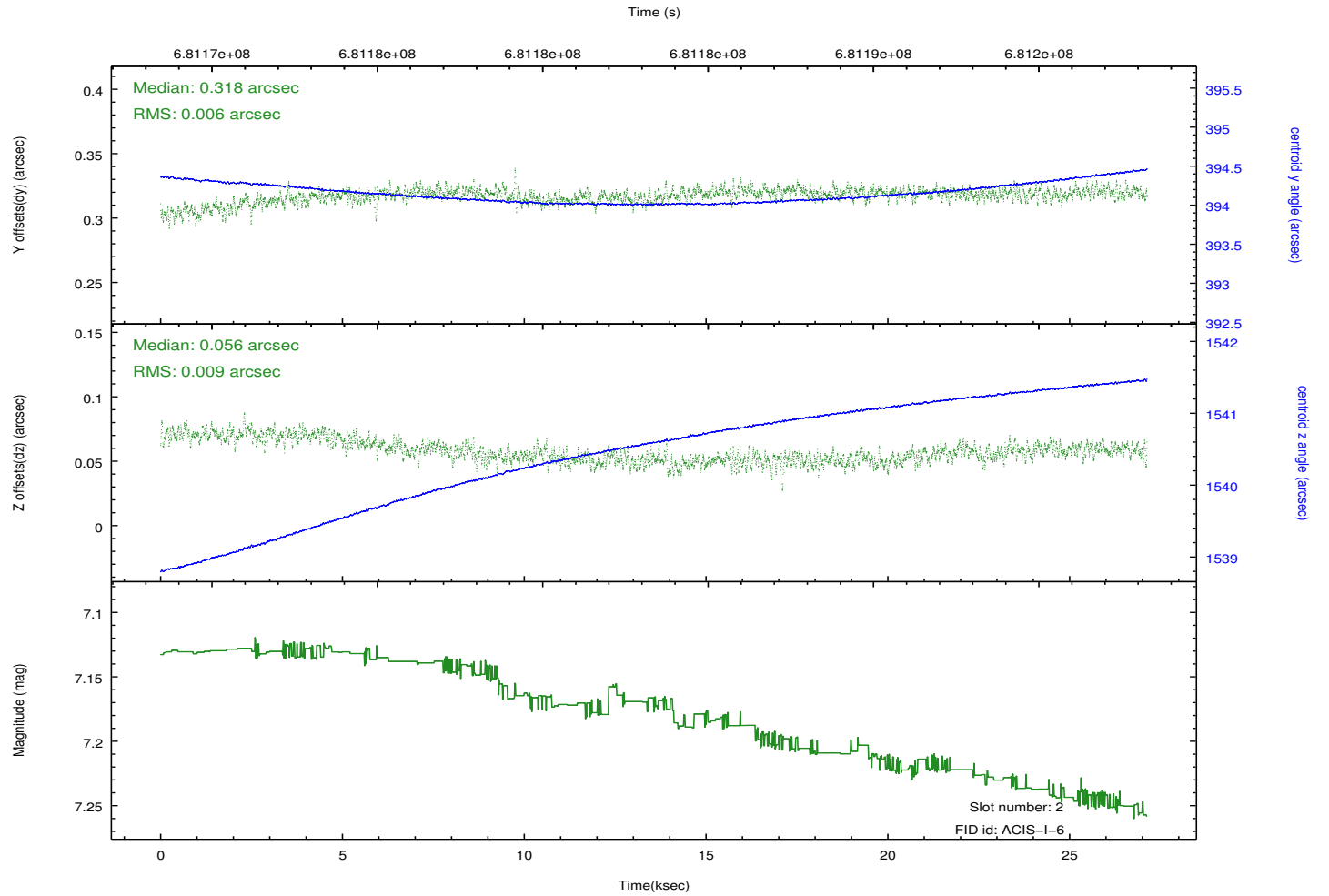
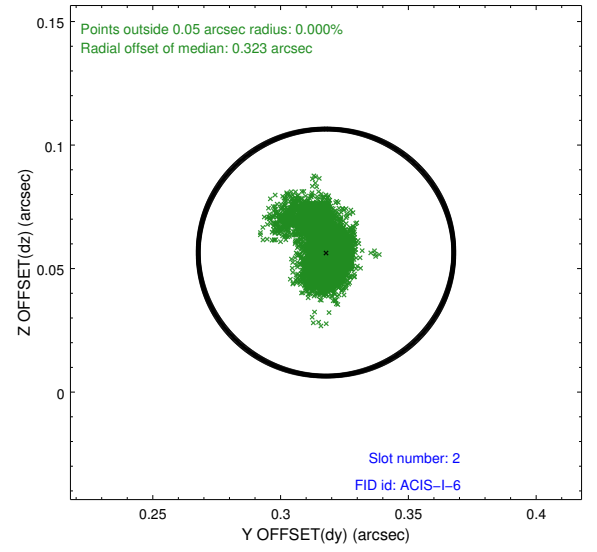
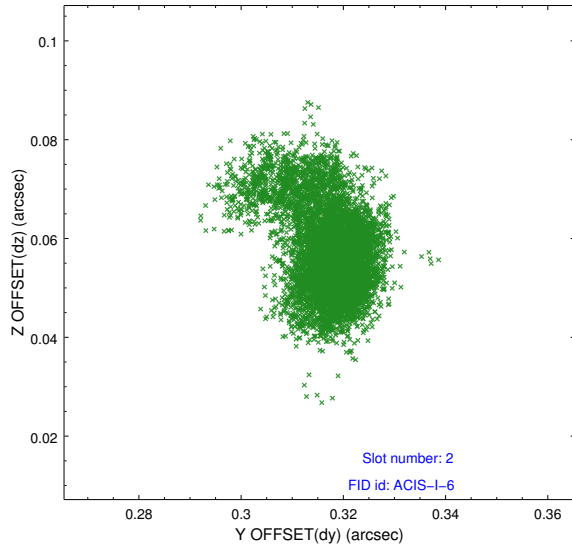
2.5.1 Slot 0



2.5.2 Slot 1



2.5.3 Slot 2



A Summary

A.1 Status

V&V Scientist	Beth Sundheim
V&V Date (YYYY-MM-DD)	2019.08.03
V&V Edition	1
V&V Disposition and Status	OK
V&V Charge Time	27.067747910023

A.2 Comments