

# V&V Reference Report

## L2 ASCDS Version : 10.7.1

Observation 22050 - L2 Version 1  
Chandra X-Ray Center

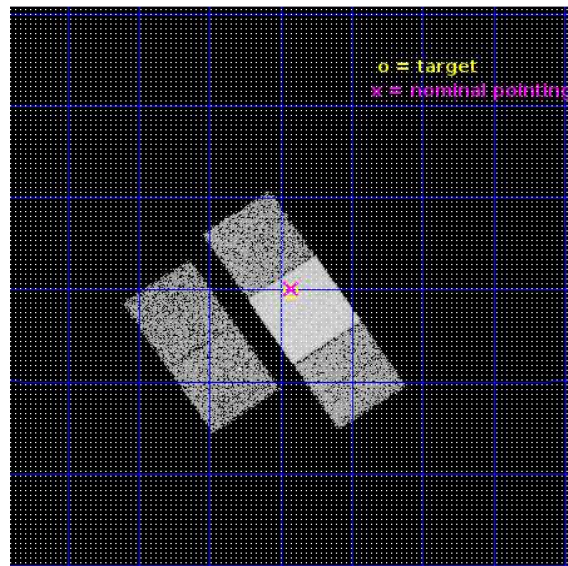
L2 Processing Date : Jan 15 2019

## Contents

<b>1</b>	<b>Front</b>	<b>2</b>
<b>2</b>	<b>OBI</b>	<b>3</b>
2.1	OBI . . . . .	3
2.1.1	Images . . . . .	3
2.1.2	Bias . . . . .	3
2.1.3	Parameters . . . . .	4
2.1.4	Events . . . . .	4
2.2	Compared Parameters . . . . .	5
2.3	Aspect . . . . .	6
2.4	Star Slots . . . . .	9
2.4.1	Slot 3 . . . . .	9
2.4.2	Slot 4 . . . . .	10
2.4.3	Slot 5 . . . . .	11
2.4.4	Slot 6 . . . . .	12
2.4.5	Slot 7 . . . . .	13
2.5	FID Slots . . . . .	14
2.5.1	Slot 0 . . . . .	14
2.5.2	Slot 1 . . . . .	15
2.5.3	Slot 2 . . . . .	16
<b>A</b>	<b>Summary</b>	<b>17</b>
A.1	Status . . . . .	17
A.2	Comments . . . . .	17

# 1 Front

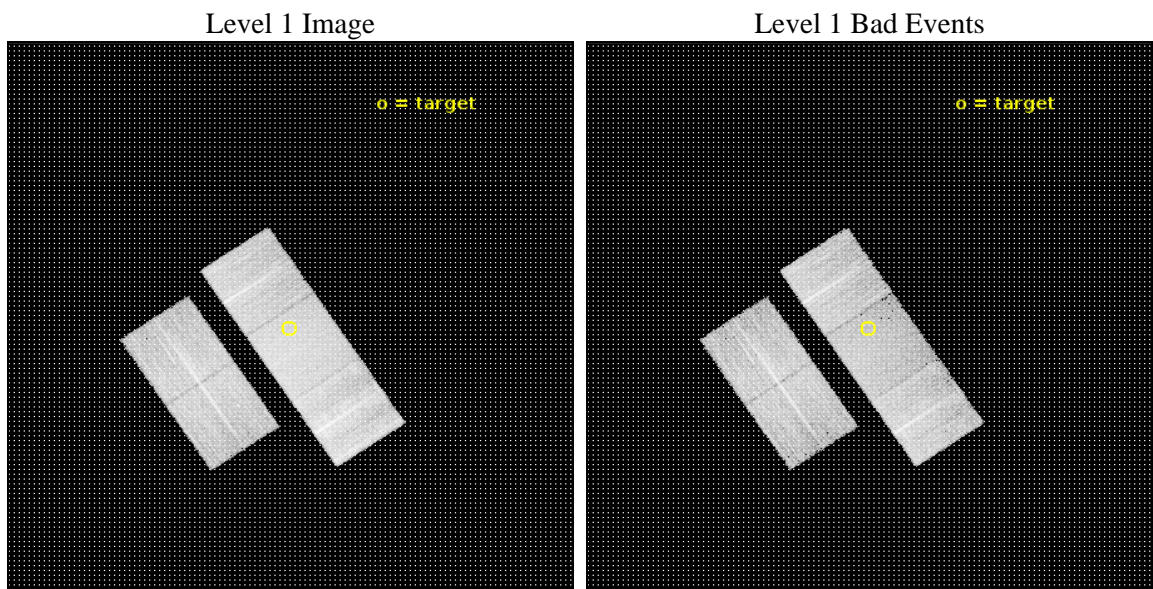
seq_num	703802	Sequence number
obs_id	22050	Observation id
title	J1047+0739: X-ray weak/obscured AGN or extreme starburst?	Proposal
observer	Franz Bauer	Principal investigator
object	J1047+0739	Source name
dtcycle	0	&#160
cycle	P	events from which exps? Prim/Second/Both
ra_targ	161.982917	Observer's specified target RA [deg]
dec_targ	7.664194	Observer's specified target Dec [deg]
ra_nom	161.98113988584	Nominal RA [deg]
dec_nom	7.6686088498571	Nominal Dec [deg]
roll_nom	56.156886155376	Nominal Roll [deg]
revision	1	Processing version of data
ontime	10055.130312562	Sum of GTIs [s]
livetime	9923.7526325491	Livetime [s]
ontime2	10054.966152549	Sum of GTIs [s]
ontime3	10048.766222358	Sum of GTIs [s]
ontime6	10055.089272618	Sum of GTIs [s]
ontime7	10055.130312562	Sum of GTIs [s]
ontime8	10055.007192612	Sum of GTIs [s]
l2events	71704	Number of level 2 events



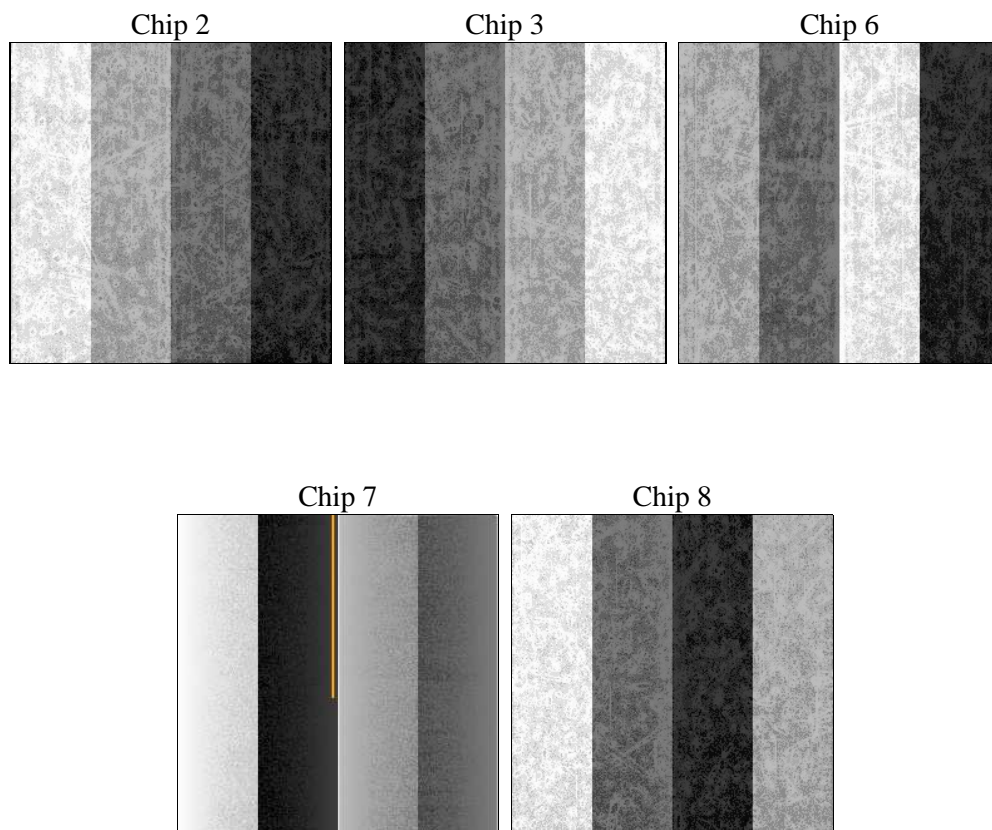
## 2 OBI

### 2.1 OBI

#### 2.1.1 Images



#### 2.1.2 Bias



### 2.1.3 Parameters

obi_num	0	Obi number	sched_exp_time	10000.000000	[s] Scheduled observation exposure time
ascdsver	10.7.1	Processing system revision	ontime	10055.130312562	Sum of GTIs [s]
caldsver	4.8.2	&#160	ontime2	10054.966152549	Sum of GTIs [s]
date	2019-01-15T23:44:09	Date and time of file creation	ontime3	10048.766222358	Sum of GTIs [s]
revision	1	Processing version of data	ontime6	10055.089272618	Sum of GTIs [s]
			ontime7	10055.130312562	Sum of GTIs [s]
			ontime8	10055.007192612	Sum of GTIs [s]
			l1events	425381	Number of level 1 events

### 2.1.4 Events

	ccd 2	ccd 3	ccd 6	ccd 7	ccd 8
level 1 events	74407	71763	78806	97560	102845
rejected events	66358	63762	70052	55075	74131
rejected %	89%	88%	88%	56%	72%

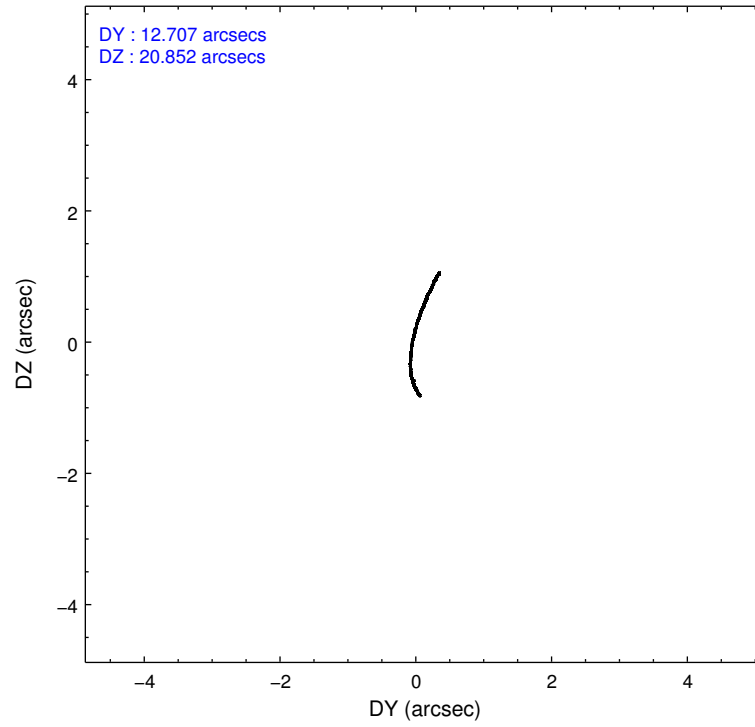
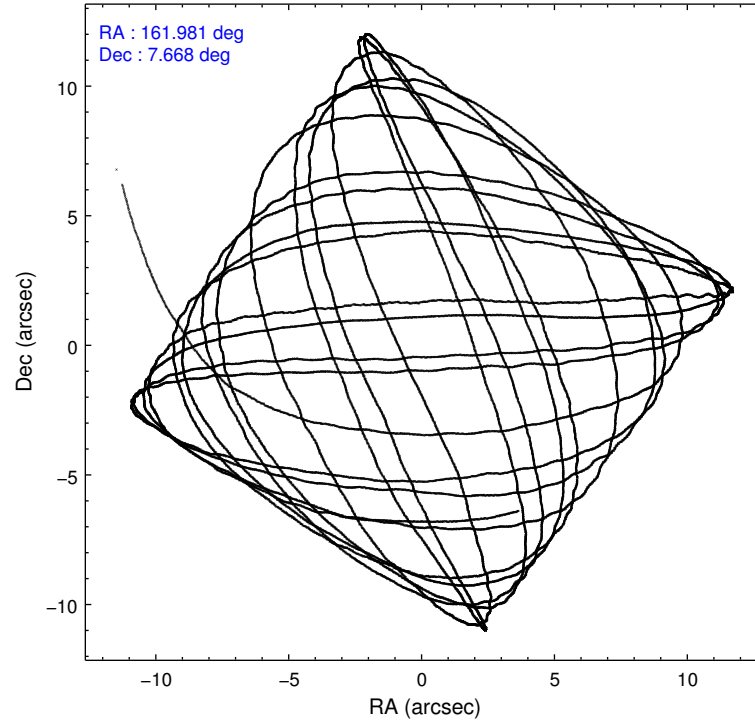
	ccd 2	ccd 3	ccd 6	ccd 7	ccd 8
grade 0 events	2897	2915	2982	3569	8091
	3%	4%	3%	3%	7%
grade 1 events	47	48	44	143	84
	0%	0%	0%	0%	0%
grade 2 events	1960	1772	2008	9174	6887
	2%	2%	2%	9%	6%
grade 3 events	803	851	862	3335	3060
	1%	1%	1%	3%	2%
grade 4 events	784	813	818	3320	2792
	1%	1%	1%	3%	2%
grade 5 events	3170	3777	3814	9879	5271
	4%	5%	4%	10%	5%
grade 6 events	1606	1653	2089	23119	7900
	2%	2%	2%	23%	7%
grade 7 events	63140	59934	66189	45021	68760
	84%	83%	83%	46%	66%

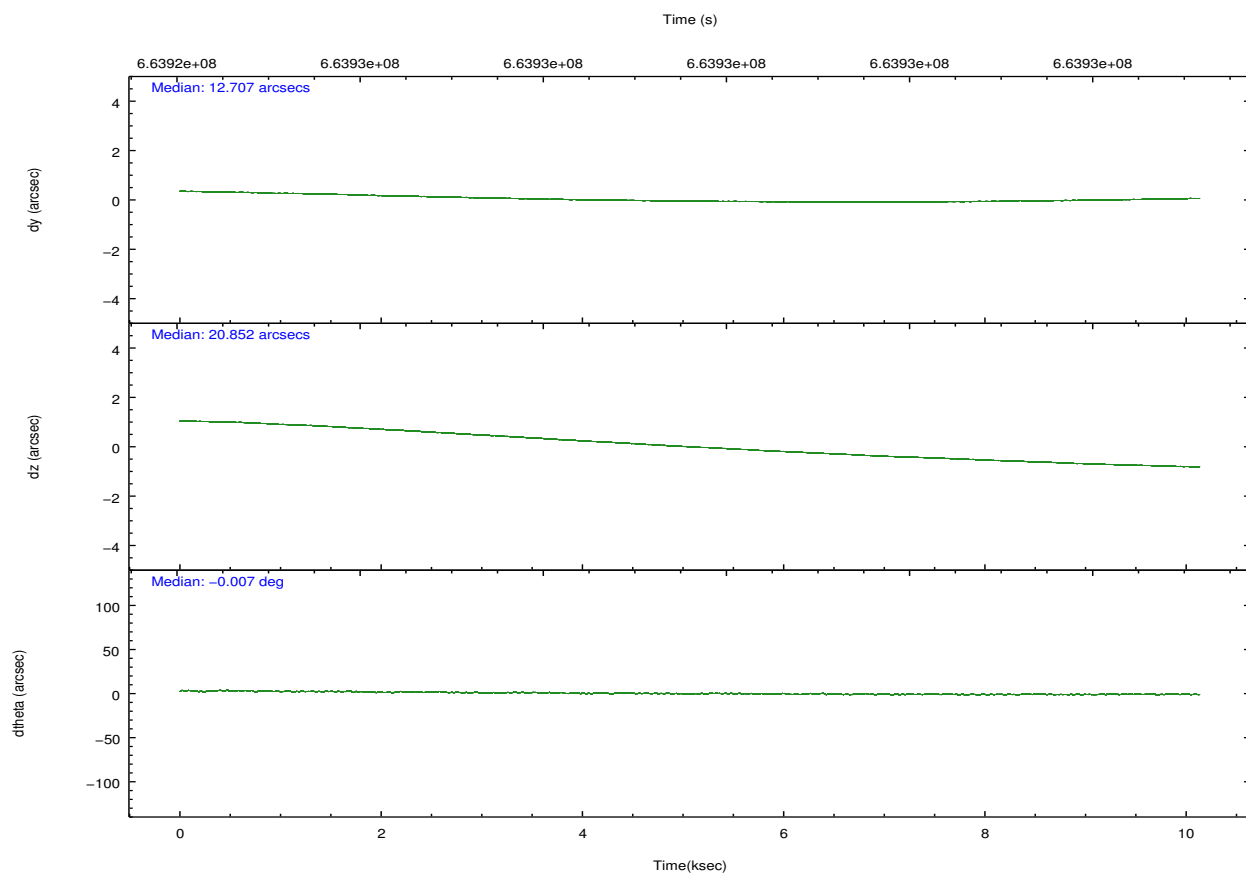
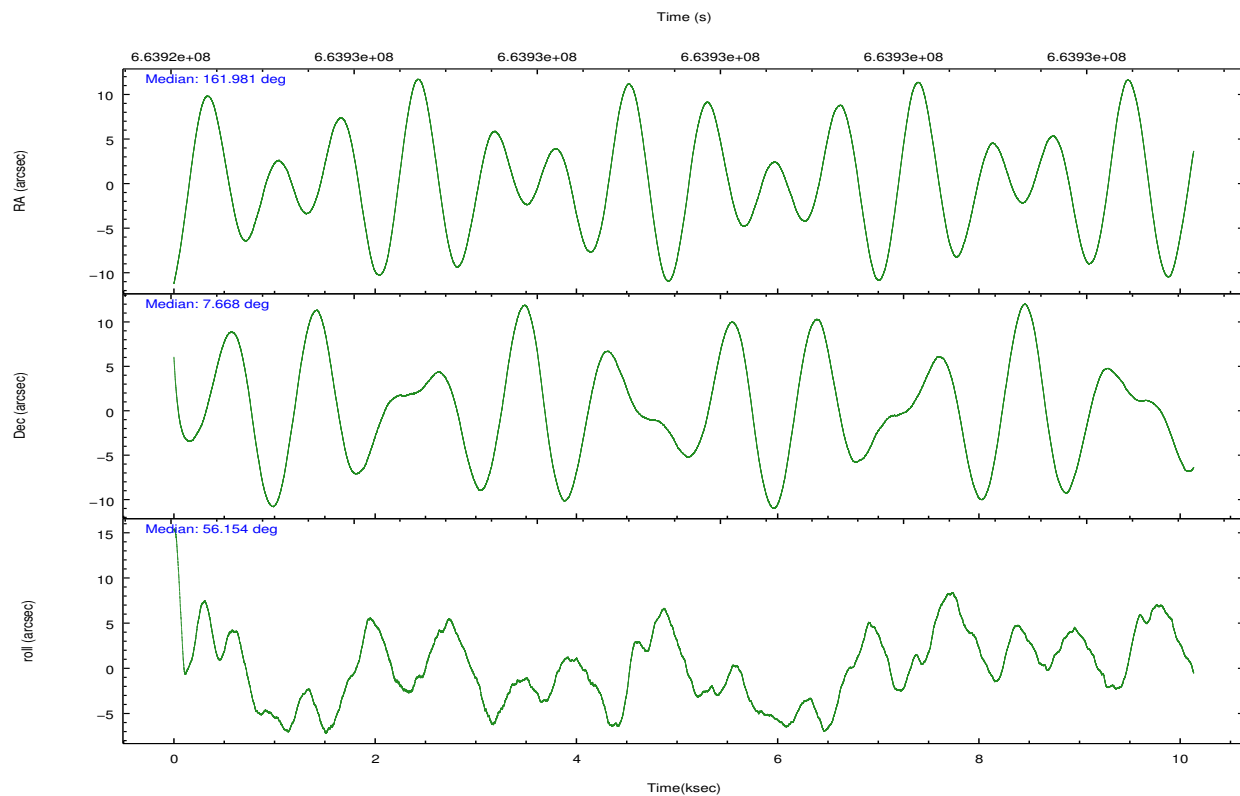


## 2.2 Compared Parameters

Parameter	Planned	Actual	Parameter	Planned	Actual
Instrument	ACIS	ACIS	Obspar format version number	7	7
Detector	ACIS-23678	ACIS-23678	Obspar file type	PREDICTED	ACTUAL
Grating	NONE	NONE	Obspar update status	NONE	UPDATED
Data mode	VFAINT	VFAINT	CCD I0 on	N	N
Observation mode	POINTING	POINTING	CCD I1 on	N	N
[deg] Pointing RA	161.979679	161.9811398858351	CCD I2 on	O1	Y
[deg] Pointing Dec	7.641209	7.668608849857101	CCD I3 on	Y	Y
[deg] Pointing Roll	56.000432	56.15688615537615	CCD S0 on	N	N
[mm] SIM focus pos	-0.684267	-0.6828225247311905	CCD S1 on	N	N
[mm] SIM defocus	0	0.001444936568705701	CCD S2 on	Y	Y
[mm] SIM translation stage pos	-190.132523	-190.1425803651734	CCD S3 on	Y	Y
[mm] SIM translation stage offset	0	0.01005778216563158	CCD S4 on	Y	Y
[s] Observation start time (MET)	663924683.184000	663923486.34841	CCD S5 on	N	N
Observation start date	2019-01-15T07:30:14	2019-01-15T07:11:26	Number of optional ACIS chips dropped	0	0
[s] Observation end time (MET)	663934683.184000	663935240.53661	On-chip summing requested	N	N
Observation end date	2019-01-15T10:16:54	2019-01-15T10:27:20	Subarray requested	NONE	NONE
Read mode	TIMED	TIMED	Alternating exposures requested	N	N
			[s] Primary exposure time	0.000000	3.1

## 2.3 Aspect



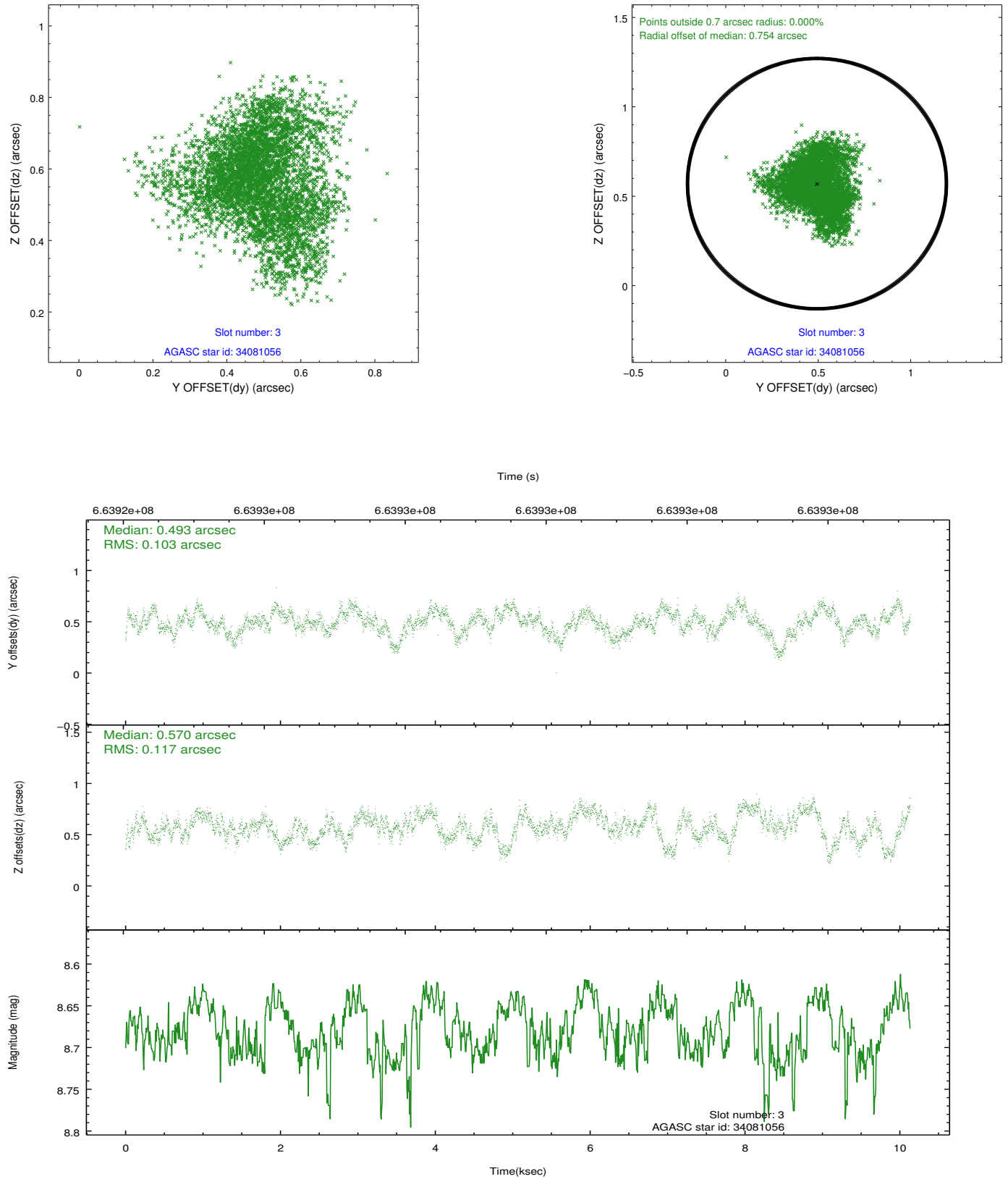


Slot Statistics

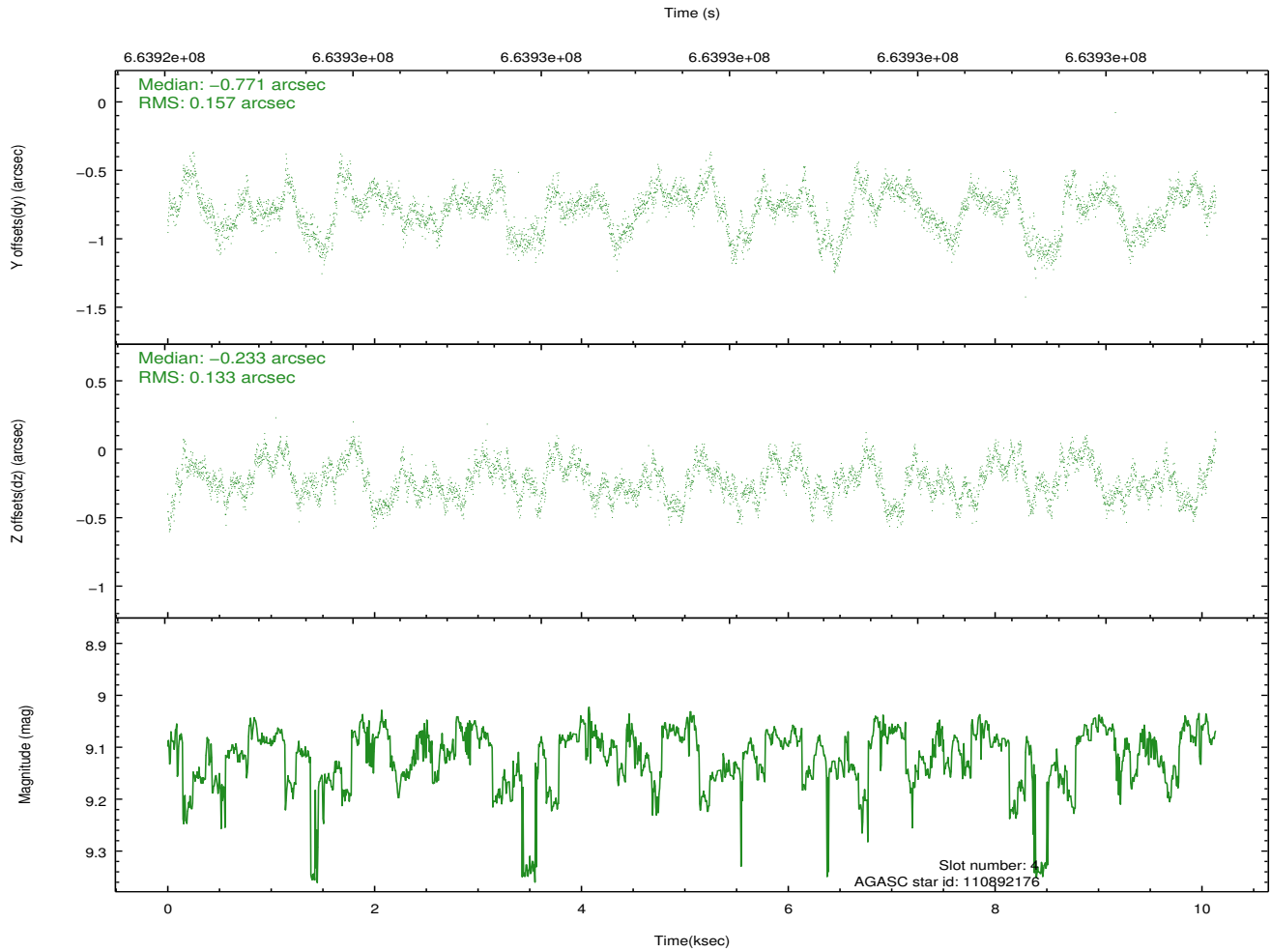
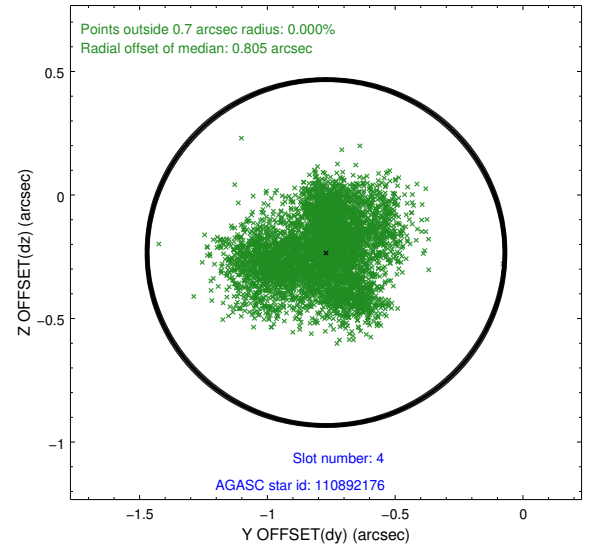
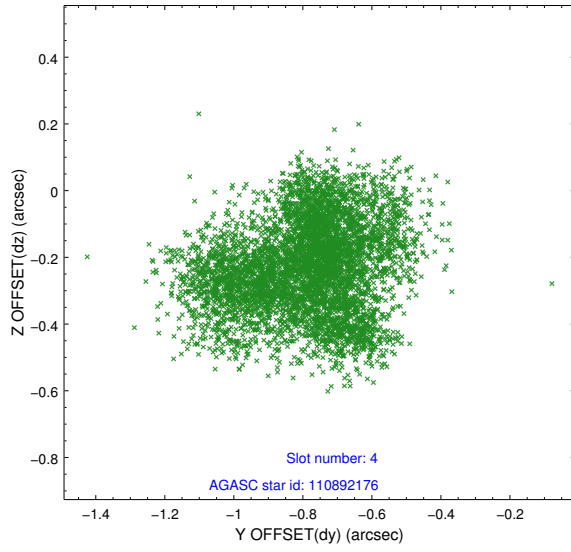
pt	status	used	id	mag	n_pts	frac_pts	med_dy	med_dz	dr1	dr2	ra	dec	mean_y	mea
0	FID		ACIS-S-2	6.99	2472	1.000	-0.277	-0.117	0.016	0.036	0.000000	0.000000	-765.86	-1742
1	FID		ACIS-S-4	7.11	2472	1.000	0.668	0.166	0.009	0.016	0.000000	0.000000	2148.04	165
2	FID		ACIS-S-5	7.10	2472	1.000	-0.422	-0.039	0.015	0.028	0.000000	0.000000	-1818.26	159
3	GUIDE	used	34081056	8.68	4941	1.000	0.493	0.570	0.168	0.267	162.119383	7.010257	-1603.20	-1683
4	GUIDE	used	110892176	9.11	4938	1.000	-0.771	-0.233	0.226	0.340	162.069113	8.356059	2310.89	1174
5	GUIDE	used	110894472	9.82	4910	1.000	-0.611	-0.652	0.231	0.368	161.989294	8.357224	2156.20	1412
6	GUIDE	used	34079656	9.76	4935	1.000	0.292	-0.168	0.266	0.420	161.801886	7.389703	-1104.65	20
7	GUIDE	used	34080888	9.32	4936	1.000	0.621	0.498	0.235	0.370	162.053654	6.790256	-2391.05	-1931

## 2.4 Star Slots

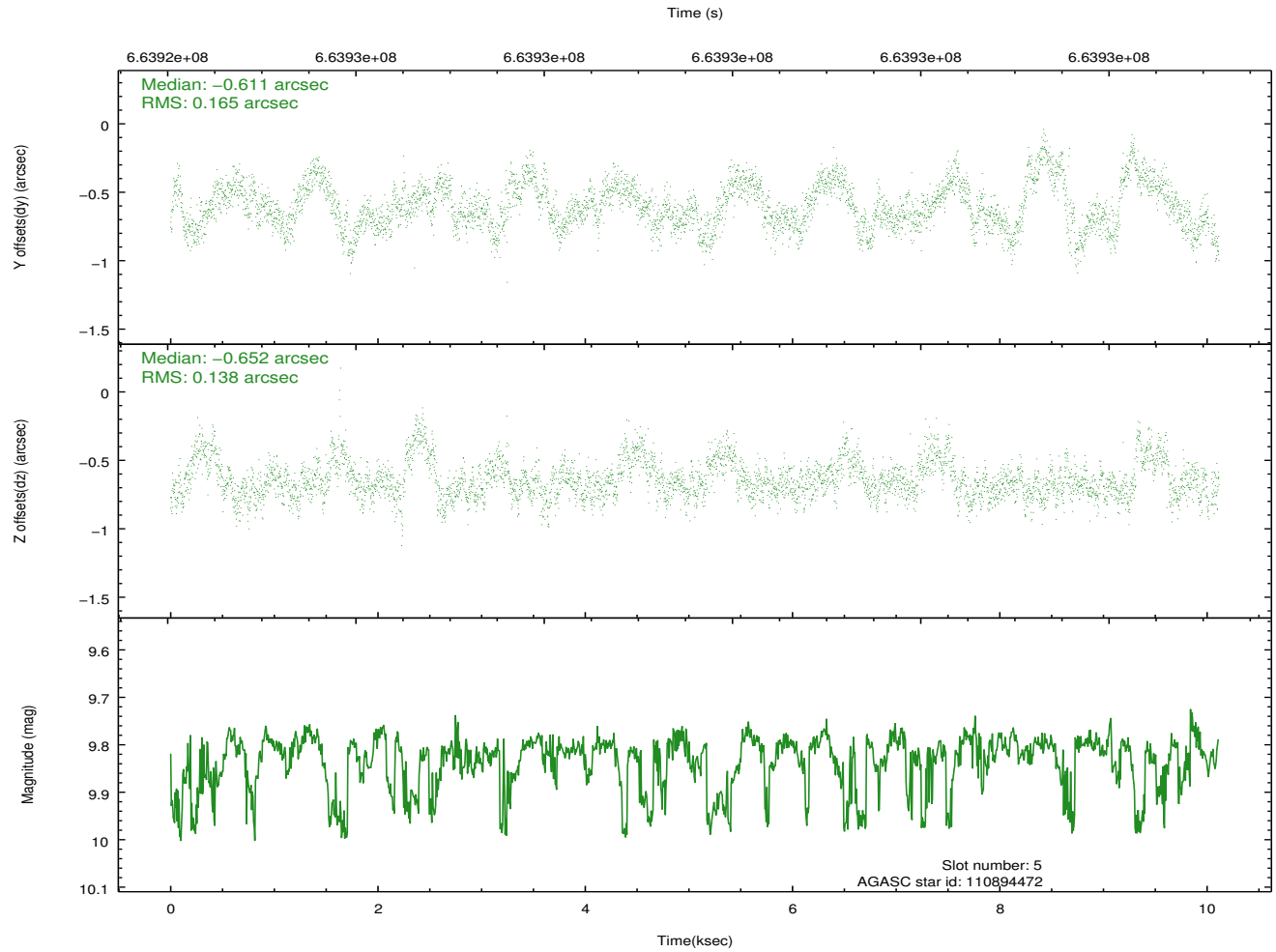
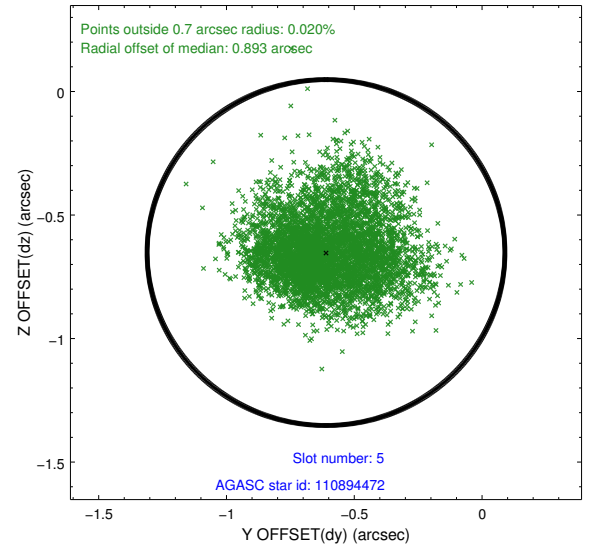
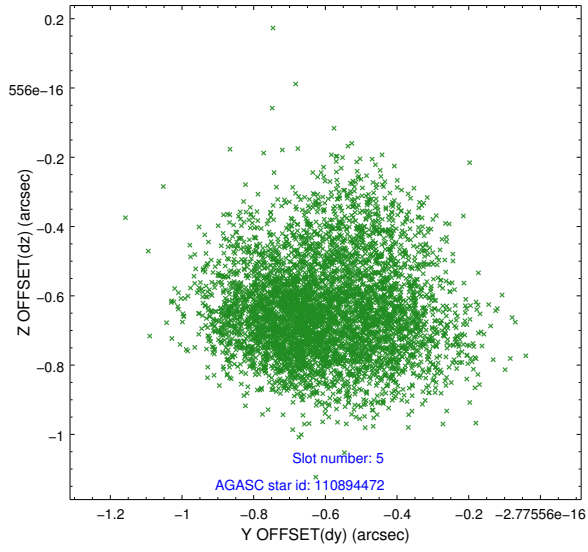
### 2.4.1 Slot 3



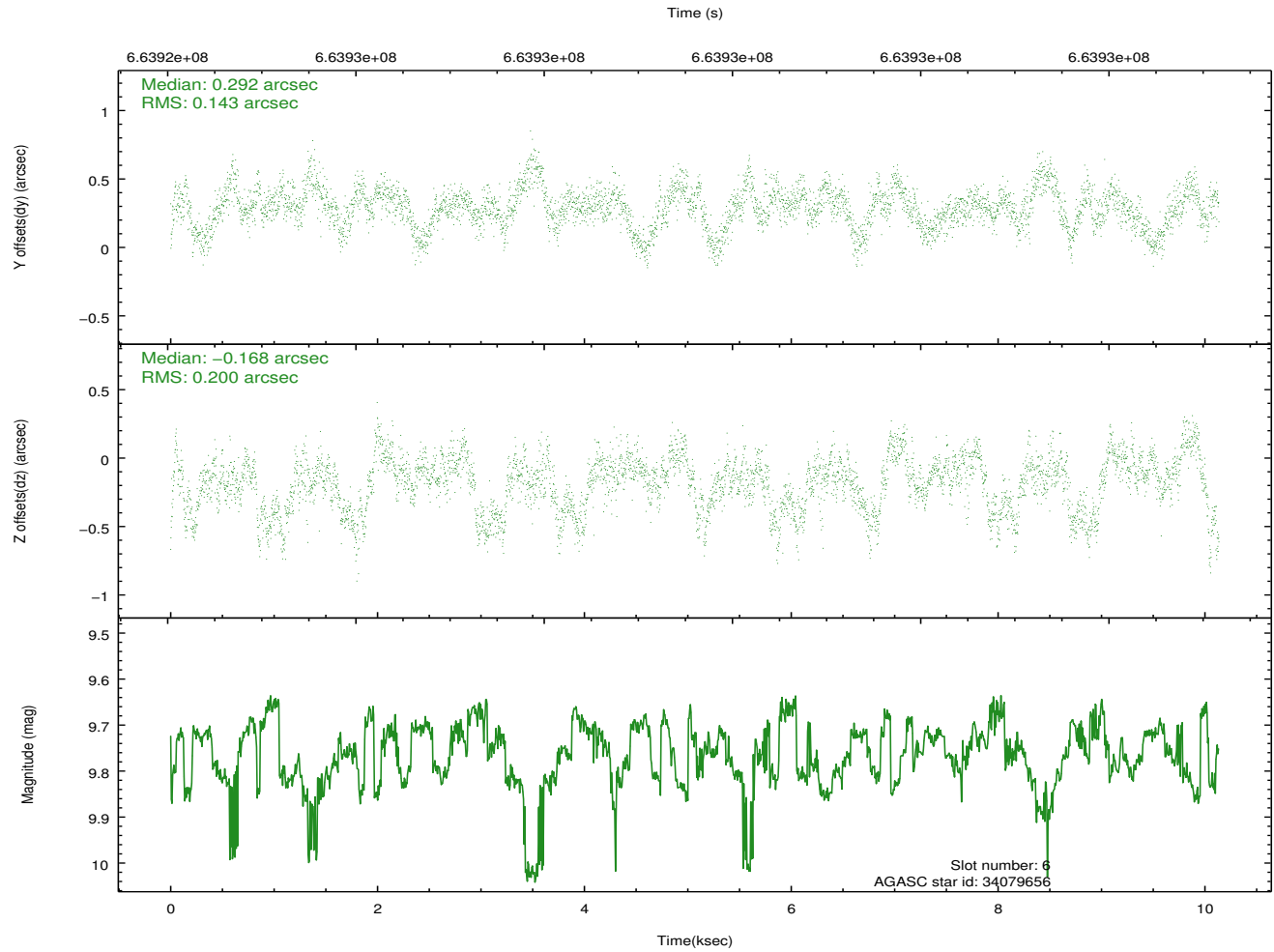
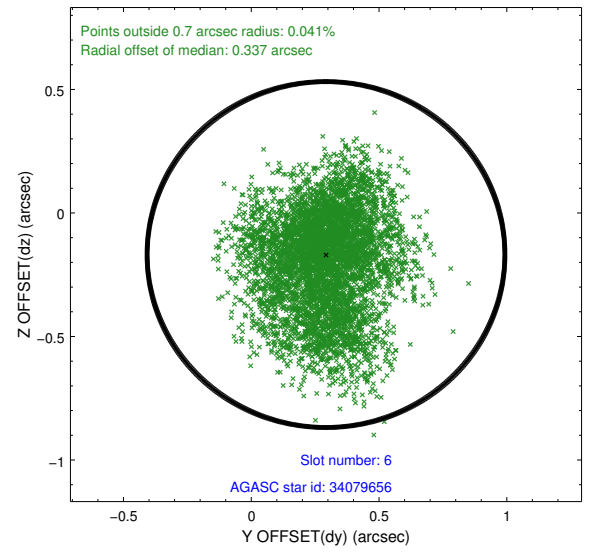
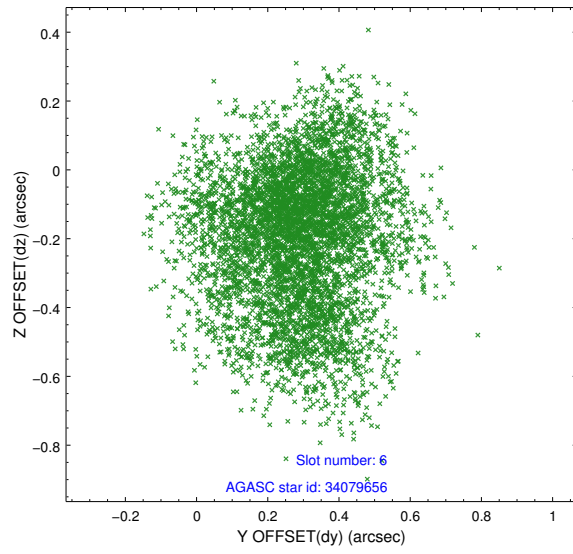
## 2.4.2 Slot 4



### 2.4.3 Slot 5

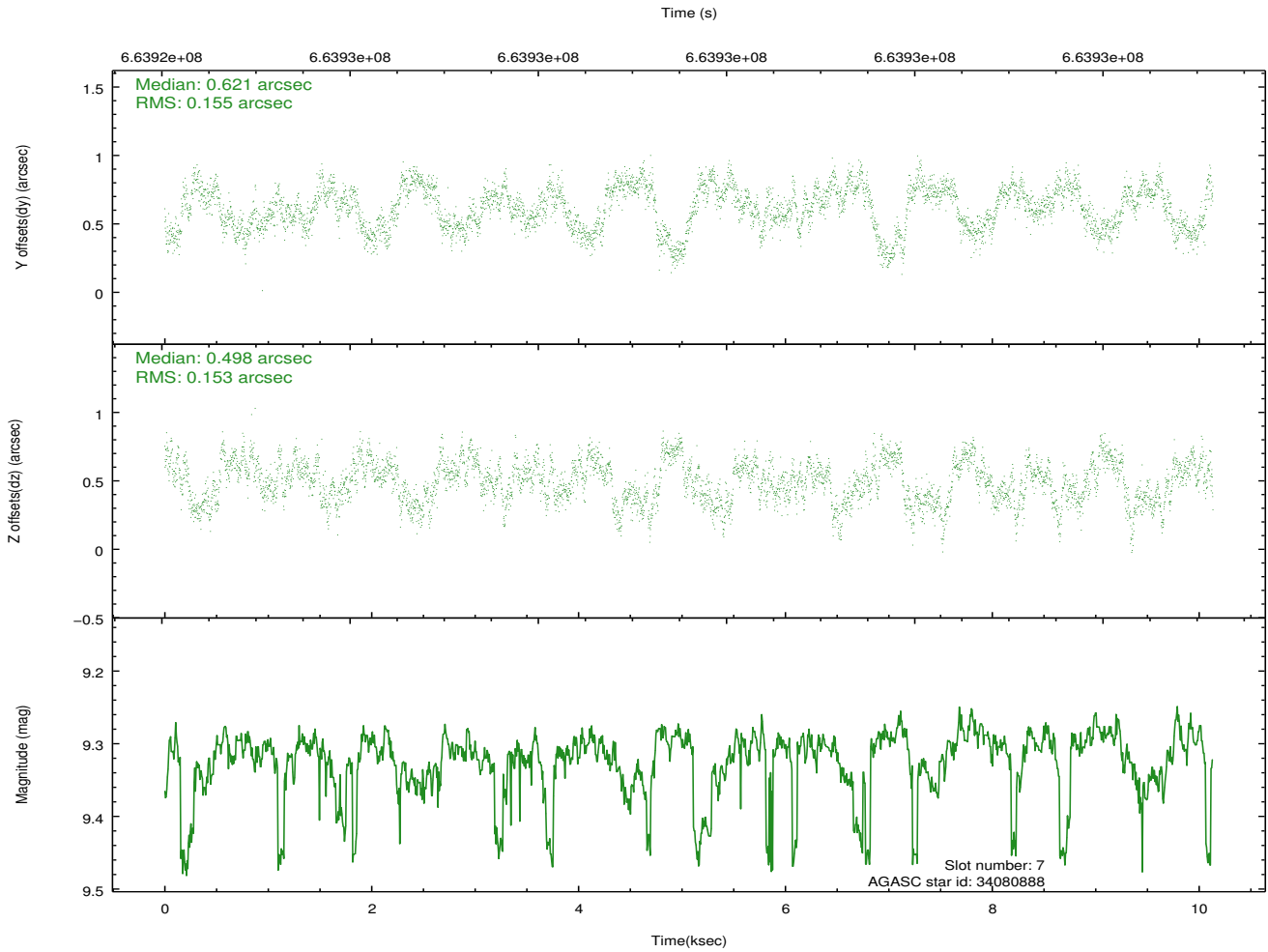
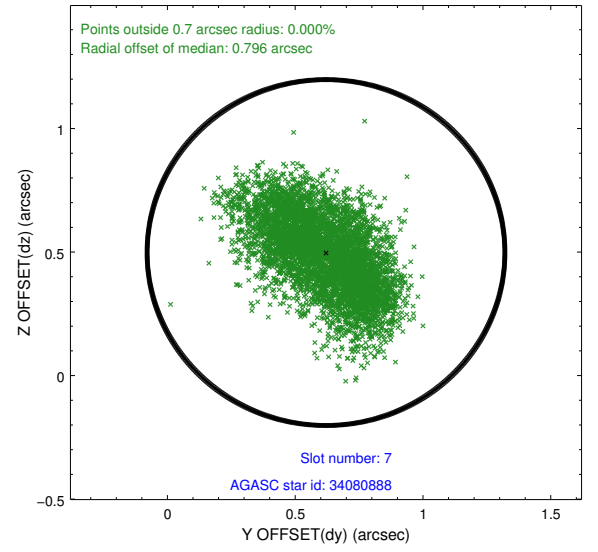
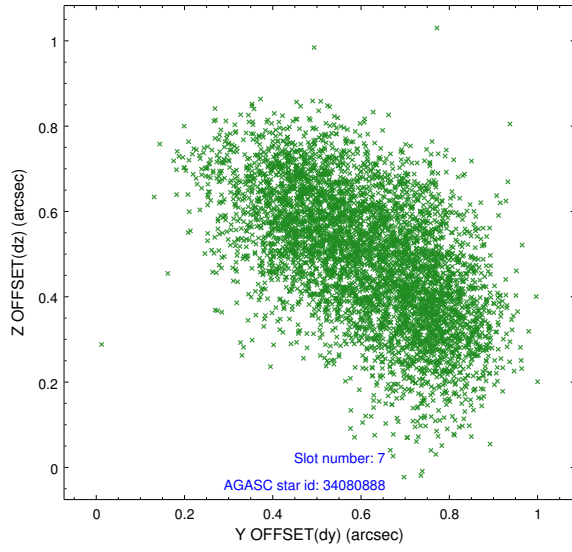


## 2.4.4 Slot 6



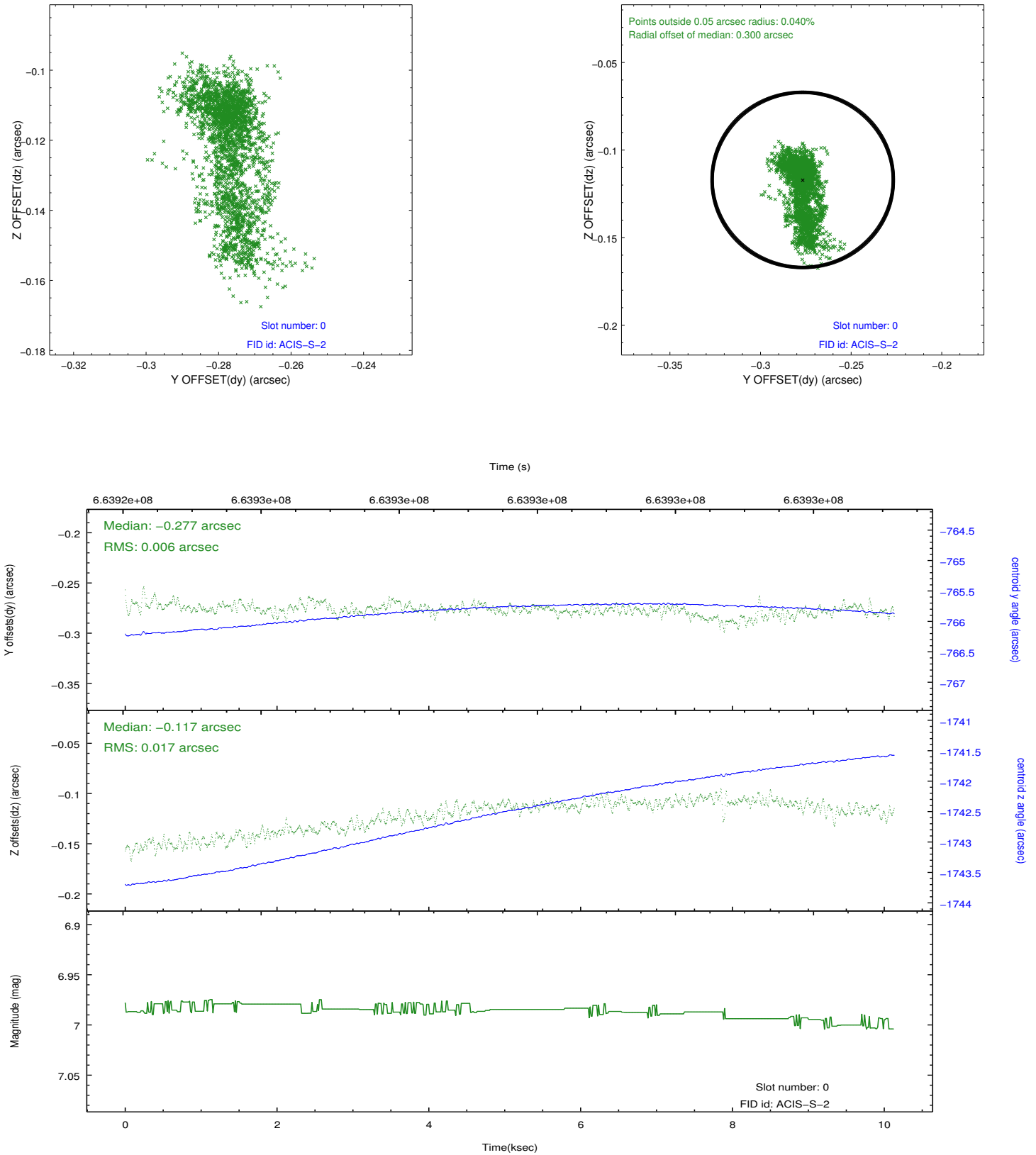


## 2.4.5 Slot 7

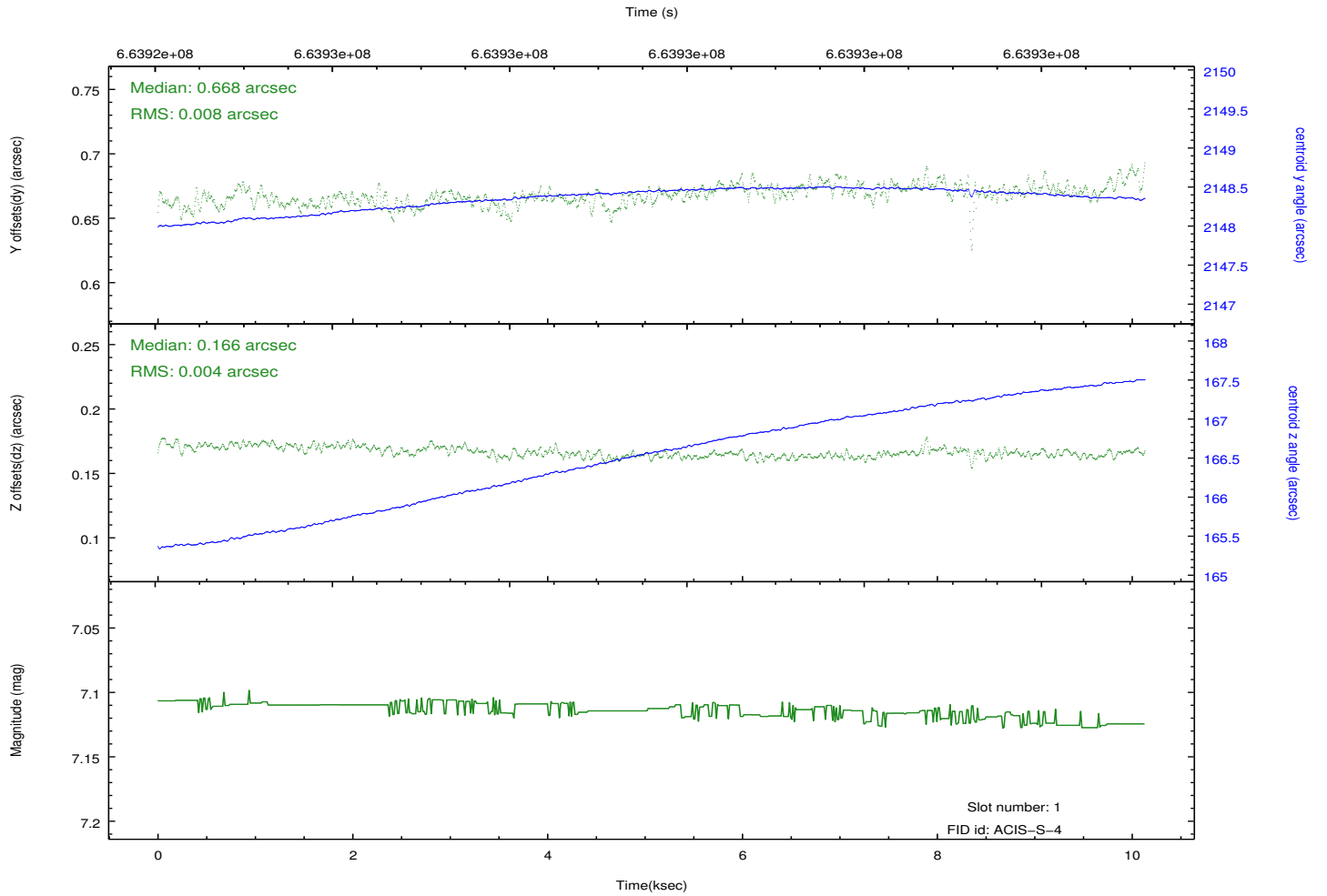
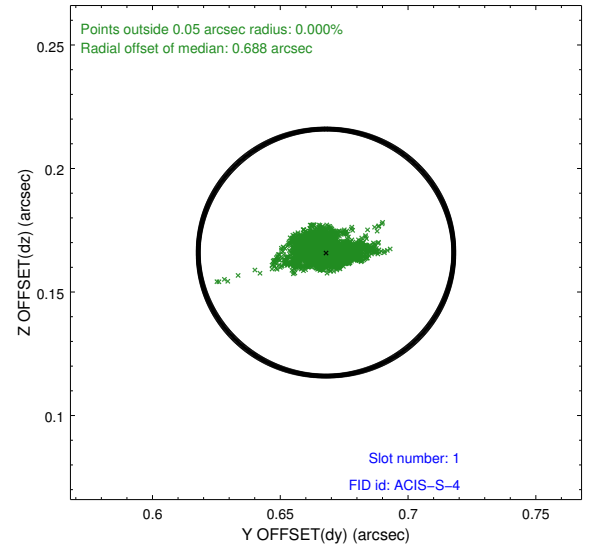
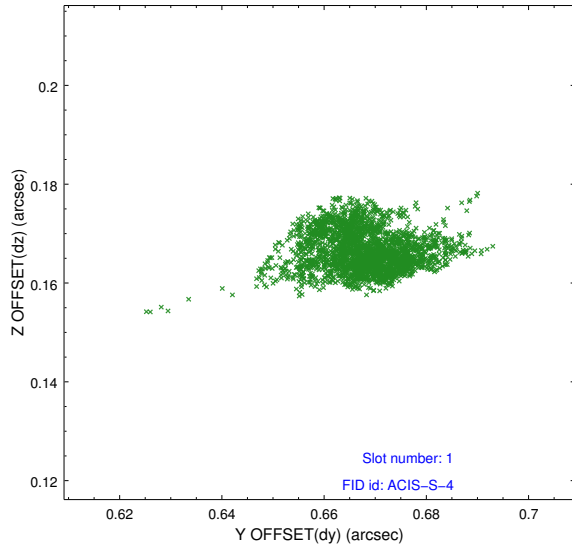


## 2.5 FID Slots

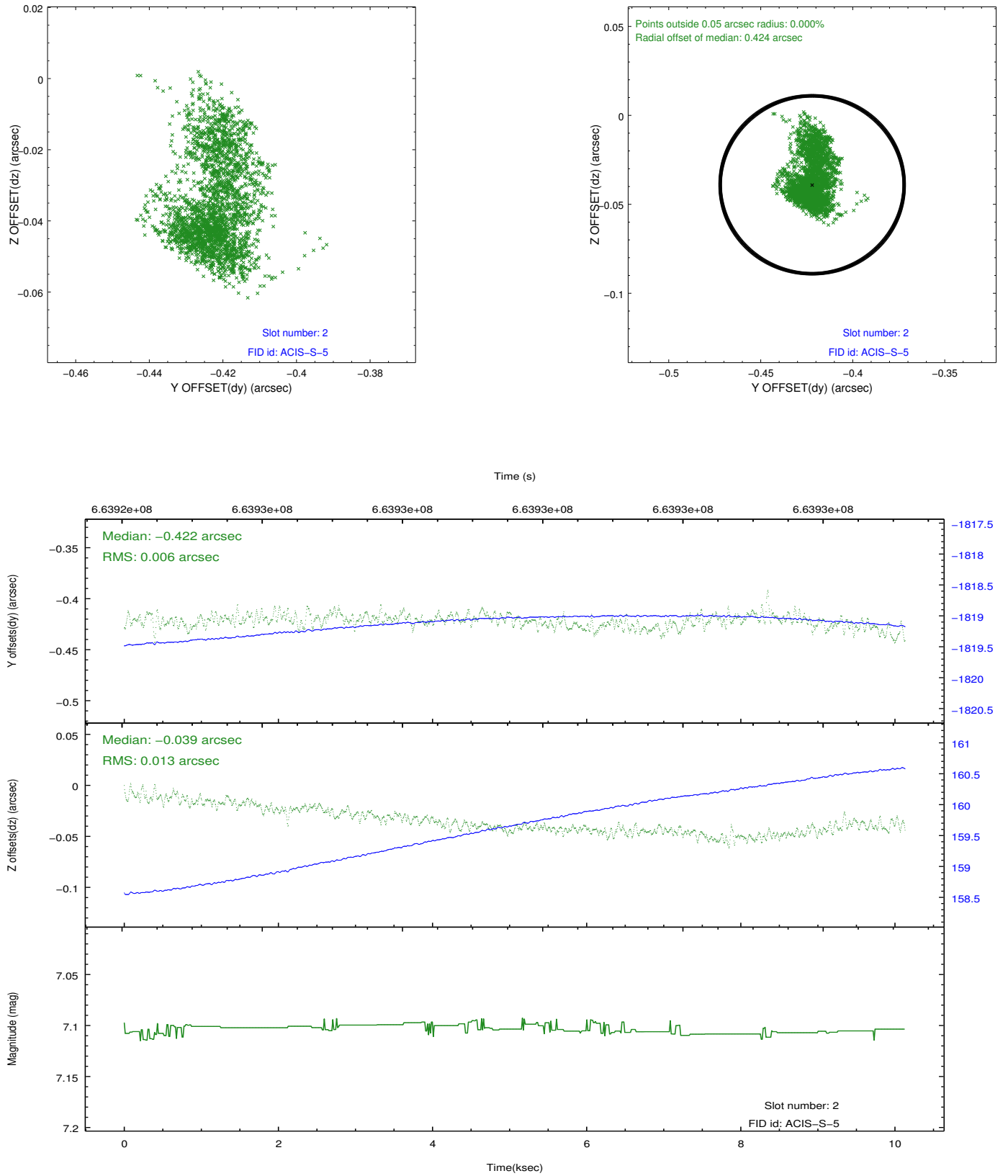
### 2.5.1 Slot 0



## 2.5.2 Slot 1



### 2.5.3 Slot 2



## A Summary

### A.1 Status

V&V Scientist	Beth Sundheim
V&V Date (YYYY-MM-DD)	2019.01.15
V&V Edition	1
V&V Disposition and Status	OK
V&V Charge Time	10.055130312562

### A.2 Comments

Joint proposal with HST.