

V&V Reference Report

L2 ASCDS Version : 10.7.1

Observation 21275 - L2 Version 1
Chandra X-Ray Center

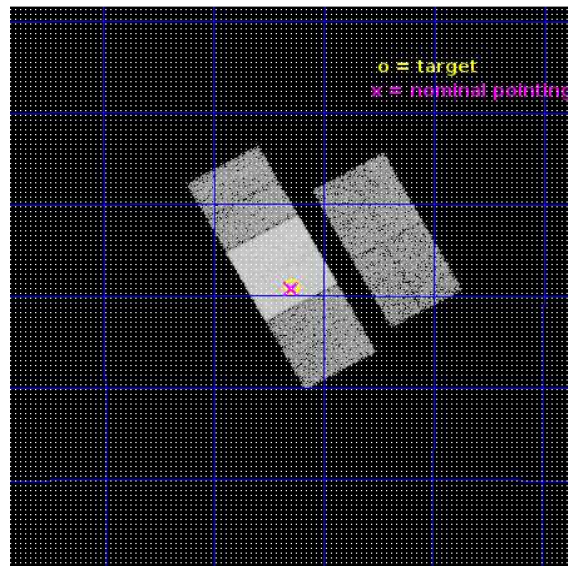
L2 Processing Date : Mar 12 2019

Contents

1	Front	2
2	OBI	3
2.1	OBI	3
2.1.1	Images	3
2.1.2	Bias	3
2.1.3	Parameters	4
2.1.4	Events	4
2.2	Compared Parameters	5
2.3	Aspect	6
2.4	Star Slots	9
2.4.1	Slot 3	9
2.4.2	Slot 4	10
2.4.3	Slot 5	11
2.4.4	Slot 6	12
2.4.5	Slot 7	13
2.5	FID Slots	14
2.5.1	Slot 0	14
2.5.2	Slot 1	15
2.5.3	Slot 2	16
A	Summary	17
A.1	Status	17
A.2	Comments	17

1 Front

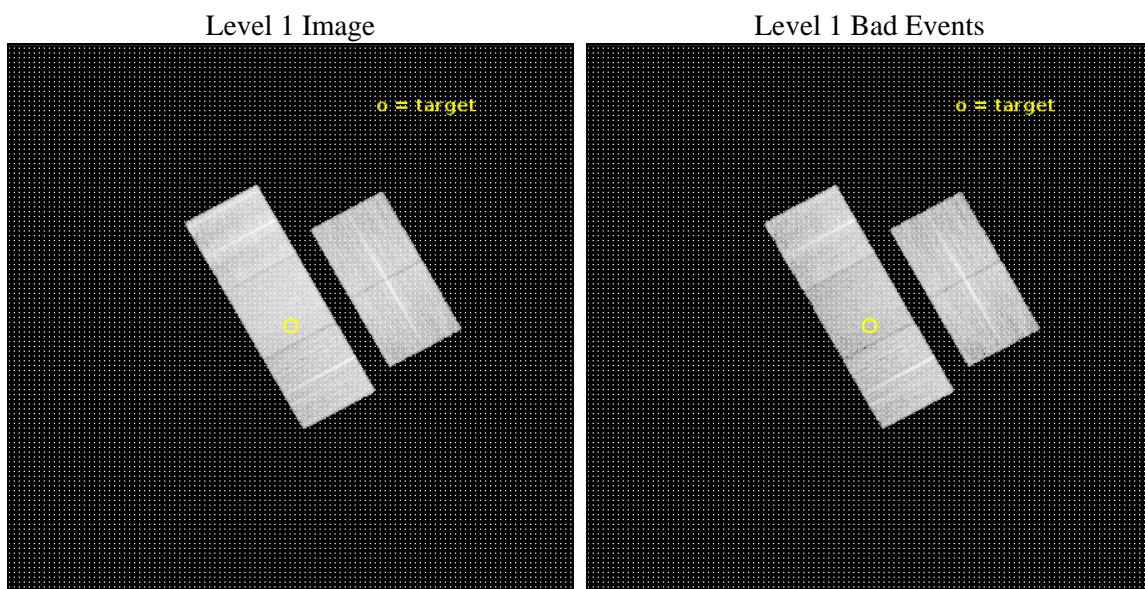
seq_num	300407	Sequence number
obs_id	21275	Observation id
title	The Mysterious Boundary Layers in High Accretion Rate White Dwarf Binaries	Proposal title
observer	Koji Mukai	Principal investigator
object	1RXS J022917.1-395851	Source name
dtcycle	0	
cycle	P	events from which exps? Prim/Second/Both
ra_targ	37.320833	Observer's specified target RA [deg]
dec_targ	-39.983806	Observer's specified target Dec [deg]
ra_nom	37.323724754663	Nominal RA [deg]
dec_nom	-39.986959644156	Nominal Dec [deg]
roll_nom	241.07878988182	Nominal Roll [deg]
revision	1	Processing version of data
ontime	15053.233732343	Sum of GTIs [s]
livetime	14856.5521516	Livetime [s]
ontime2	15053.06957233	Sum of GTIs [s]
ontime3	15053.151652336	Sum of GTIs [s]
ontime6	15053.192692399	Sum of GTIs [s]
ontime7	15053.233732343	Sum of GTIs [s]
ontime8	15053.110612392	Sum of GTIs [s]
l2events	111248	Number of level 2 events



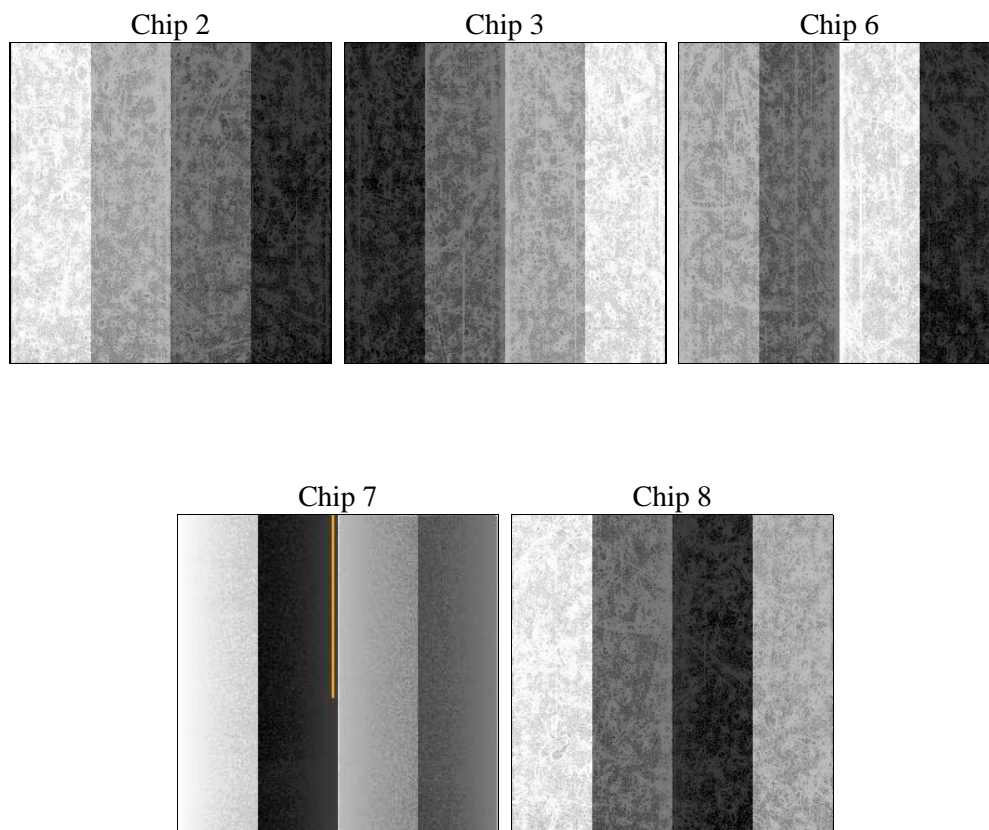
2 OBI

2.1 OBI

2.1.1 Images



2.1.2 Bias



2.1.3 Parameters

obi_num	0	Obi number	sched_exp_time	15000.795000	[s] Scheduled observation exposure time
ascdsver	10.7.1	Processing system revision	ontime	15053.233732343	Sum of GTIs [s]
caldsver	4.8.2	 	ontime2	15053.06957233	Sum of GTIs [s]
date	2019-03-12T14:07:10	Date and time of file creation	ontime3	15053.151652336	Sum of GTIs [s]
revision	1	Processing version of data	ontime6	15053.192692399	Sum of GTIs [s]
			ontime7	15053.233732343	Sum of GTIs [s]
			ontime8	15053.110612392	Sum of GTIs [s]
			l1events	649312	Number of level 1 events

2.1.4 Events

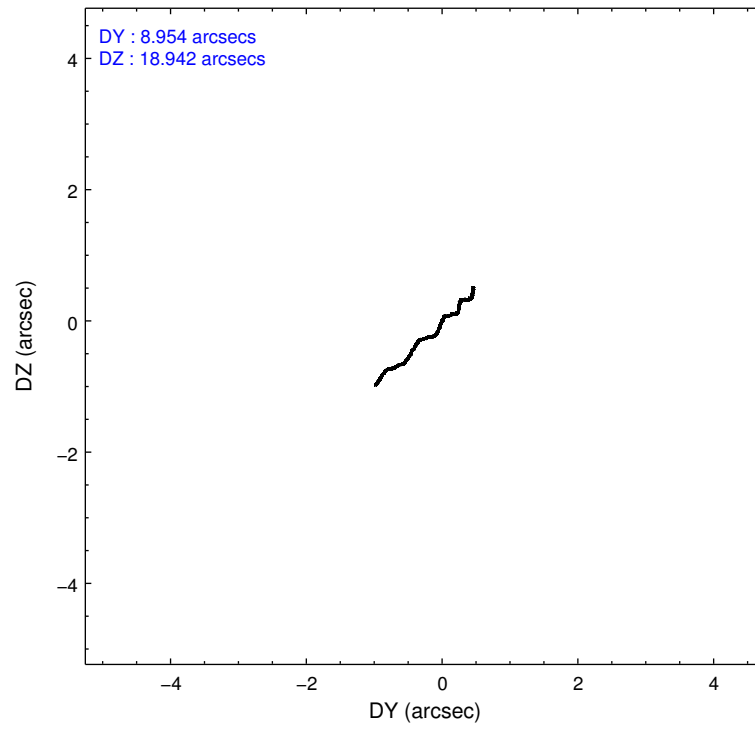
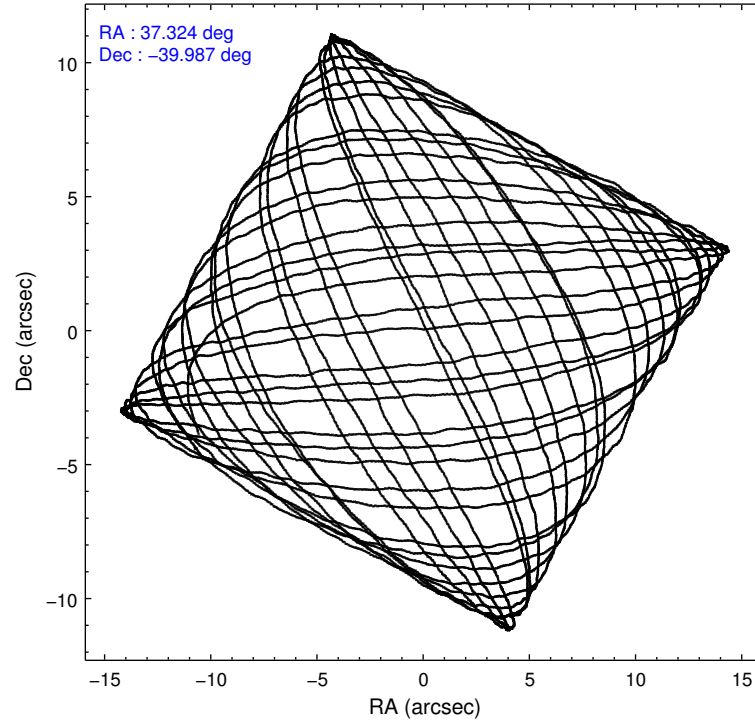
	ccd 2	ccd 3	ccd 6	ccd 7	ccd 8
level 1 events	111879	112281	119351	149988	155813
rejected events	99401	99551	105956	84231	113041
rejected %	88%	88%	88%	56%	72%

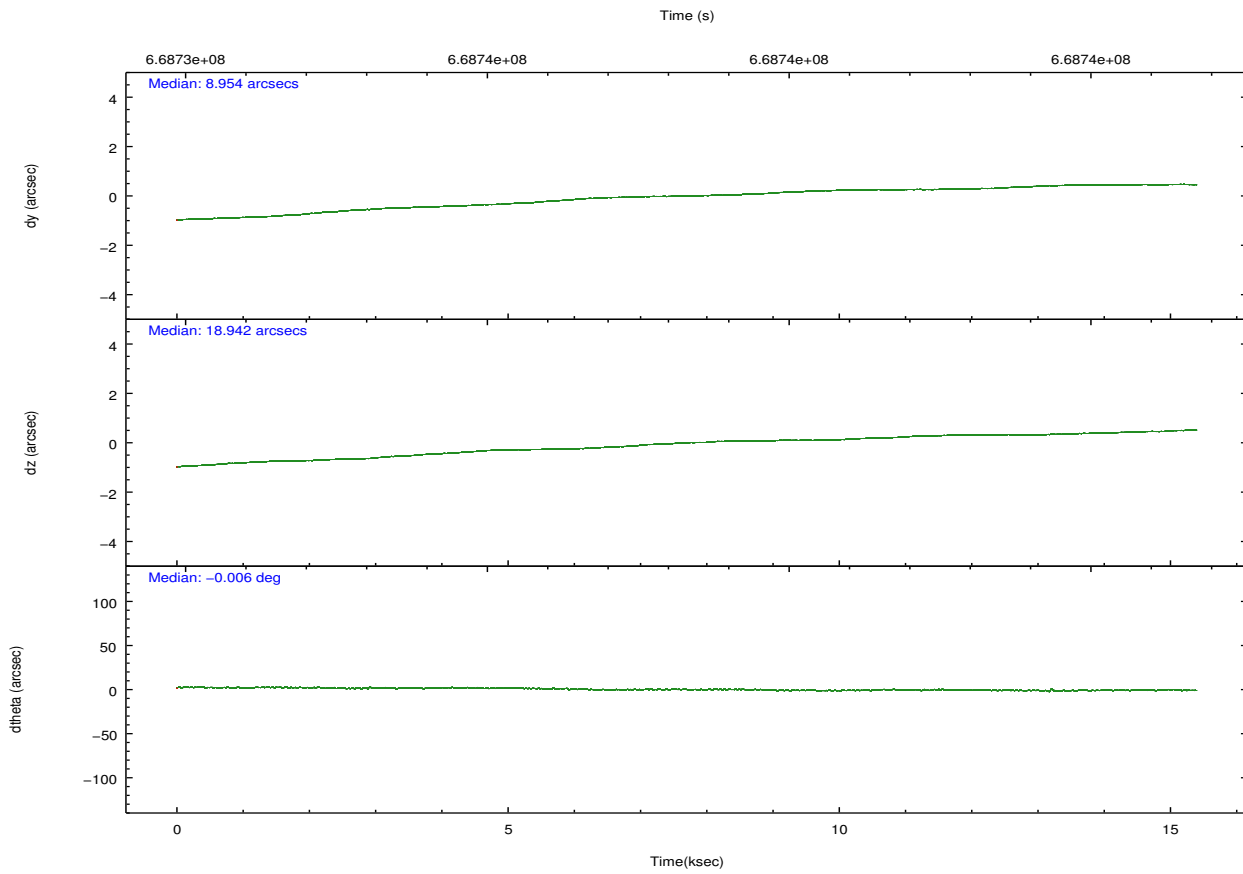
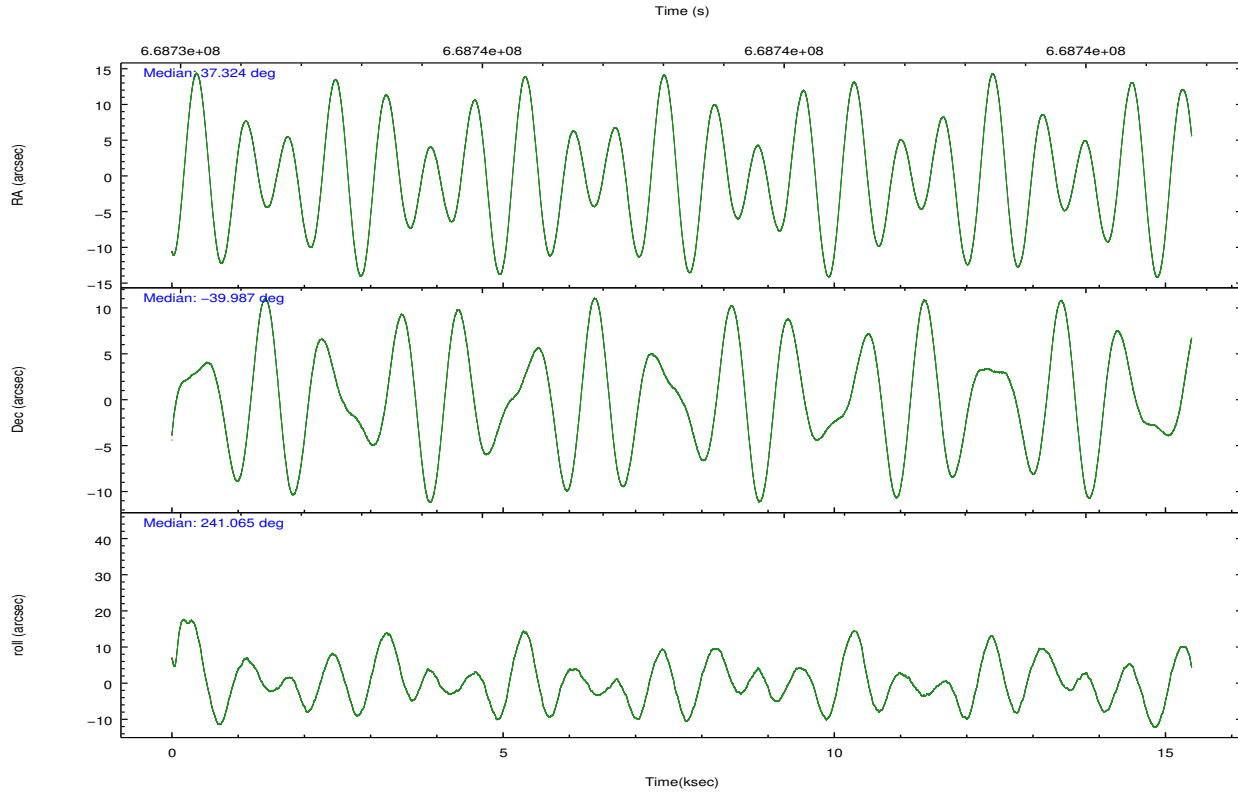
	ccd 2	ccd 3	ccd 6	ccd 7	ccd 8
grade 0 events	4374	4857	4412	5552	12493
	3%	4%	3%	3%	8%
grade 1 events	54	85	53	202	135
	0%	0%	0%	0%	0%
grade 2 events	3058	2712	3201	14069	10459
	2%	2%	2%	9%	6%
grade 3 events	1189	1297	1289	5387	4395
	1%	1%	1%	3%	2%
grade 4 events	1324	1245	1304	5205	4281
	1%	1%	1%	3%	2%
grade 5 events	4700	5443	5552	14711	8406
	4%	4%	4%	9%	5%
grade 6 events	2535	2625	3193	35572	11176
	2%	2%	2%	23%	7%
grade 7 events	94645	94017	100347	69290	104468
	84%	83%	84%	46%	67%

2.2 Compared Parameters

Parameter	Planned	Actual	Parameter	Planned	Actual
Instrument	ACIS	ACIS	Obspar format version number	7	7
Detector	ACIS-23678	ACIS-23678	Obspar file type	PREDICTED	ACTUAL
Grating	NONE	NONE	Obspar update status	NONE	UPDATED
Data mode	FAINT	FAINT	CCD I0 on	N	N
Observation mode	POINTING	POINTING	CCD I1 on	N	N
[deg] Pointing RA	37.322554	37.32372475466257	CCD I2 on	O1	Y
[deg] Pointing Dec	-39.959538	-39.98695964415553	CCD I3 on	Y	Y
[deg] Pointing Roll	240.921409	241.0787898818173	CCD S0 on	N	N
[mm] SIM focus pos	-0.684267	-0.6828225247311905	CCD S1 on	N	N
[mm] SIM defocus	0	0.001444936568705701	CCD S2 on	Y	Y
[mm] SIM translation stage pos	-190.132523	-190.1400660498719	CCD S3 on	Y	Y
[mm] SIM translation stage offset	0	0.00754346686406393	CCD S4 on	Y	Y
[s] Observation start time (MET)	668731010.184000	668729965.32312	CCD S5 on	N	N
Observation start date	2019-03-11T22:35:41	2019-03-11T22:19:25	Number of optional ACIS chips dropped	0	0
[s] Observation end time (MET)	668746011.184000	668747123.82415	On-chip summing requested	N	N
Observation end date	2019-03-12T02:45:42	2019-03-12T03:05:23	Subarray requested	NONE	NONE
Read mode	TIMED	TIMED	Alternating exposures requested	N	N
			[s] Primary exposure time	0.000000	3.1

2.3 Aspect



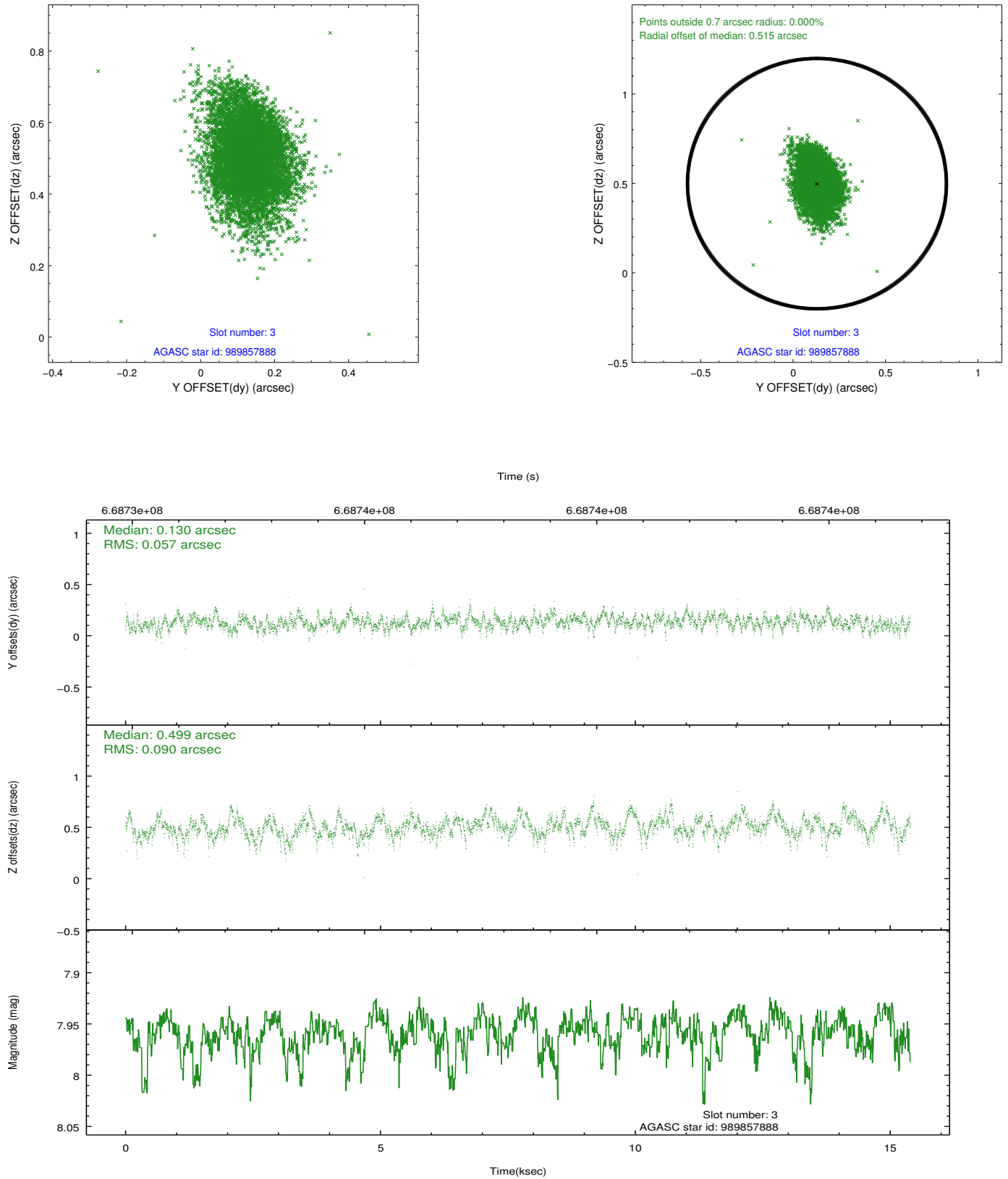


Slot Statistics

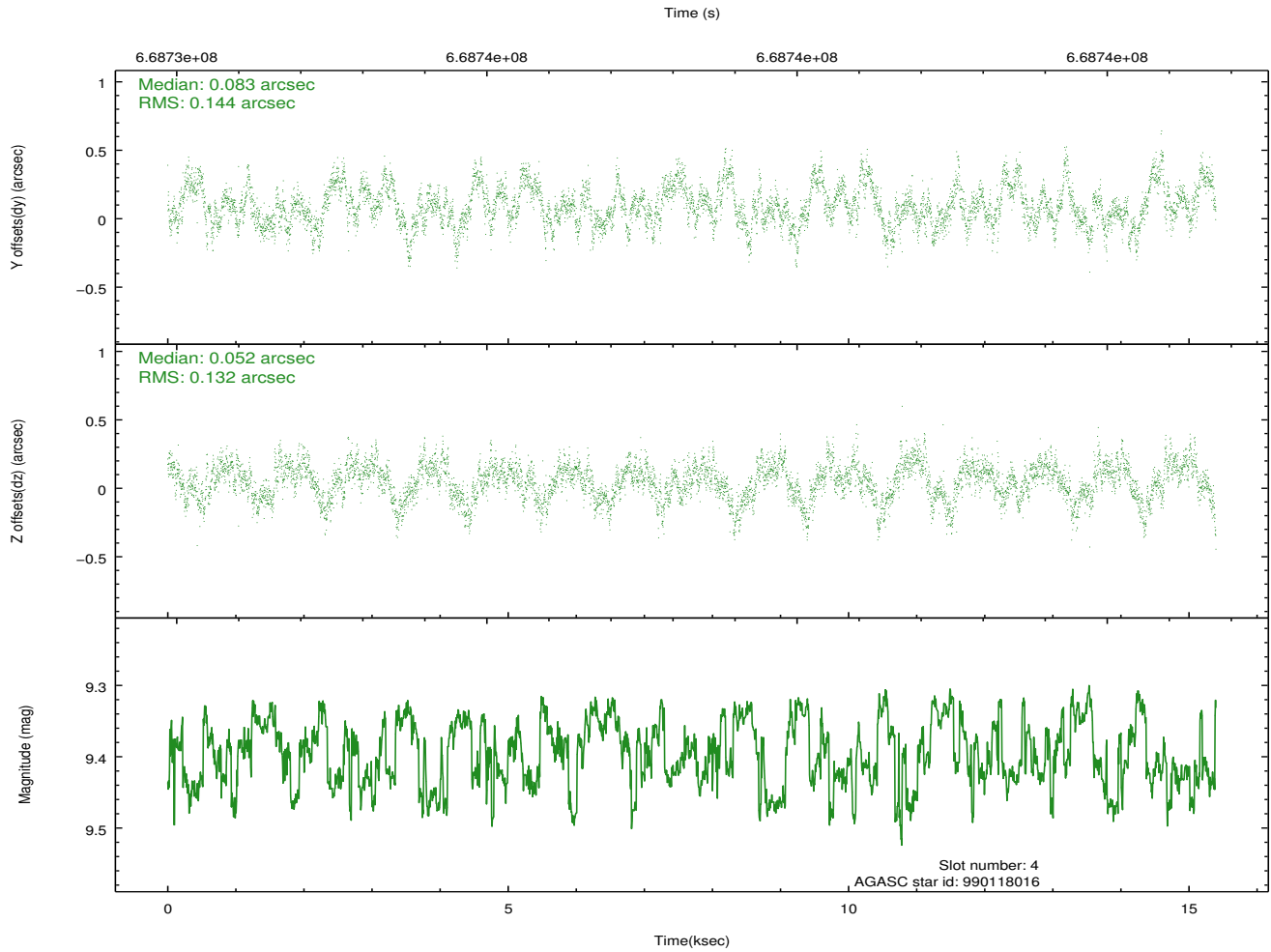
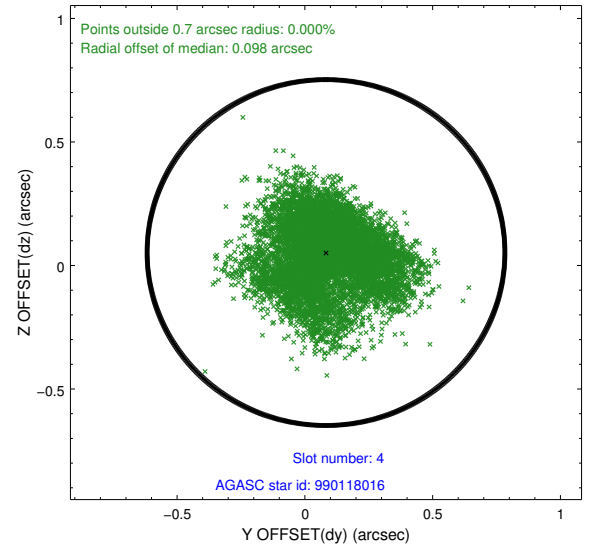
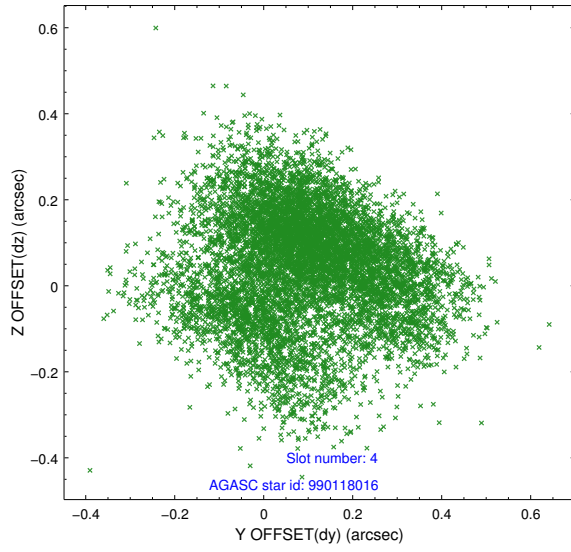
pt	status	used	id	mag	n_pts	frac_pts	med_dy	med_dz	dr1	dr2	ra	dec	mean_y	mea
0	FID		ACIS-S-2	7.03	3756	1.000	-0.258	-0.141	0.030	0.039	0.000000	0.000000	-761.87	-1740
1	FID		ACIS-S-4	7.15	3756	1.000	0.613	0.162	0.028	0.054	0.000000	0.000000	2152.08	168
2	FID		ACIS-S-5	7.15	3756	1.000	-0.383	-0.014	0.027	0.041	0.000000	0.000000	-1814.52	161
3	GUIDE	used	989857888	7.96	7506	1.000	0.130	0.499	0.109	0.190	36.680620	-39.586886	-300.39	-2204
4	GUIDE	used	990118016	9.40	7504	1.000	0.083	0.052	0.211	0.330	36.659070	-40.140616	1464.60	-1275
5	GUIDE	used	990254240	9.59	7446	1.000	0.183	-0.012	0.254	0.413	38.212020	-40.059143	-866.73	2321
6	GUIDE	used	990254456	7.87	7505	1.000	-0.022	-0.355	0.110	0.176	37.220457	-40.435298	1633.02	588
7	GUIDE	used	990255384	8.53	7503	1.000	-0.366	-0.161	0.113	0.180	37.832095	-40.329232	487.02	1871

2.4 Star Slots

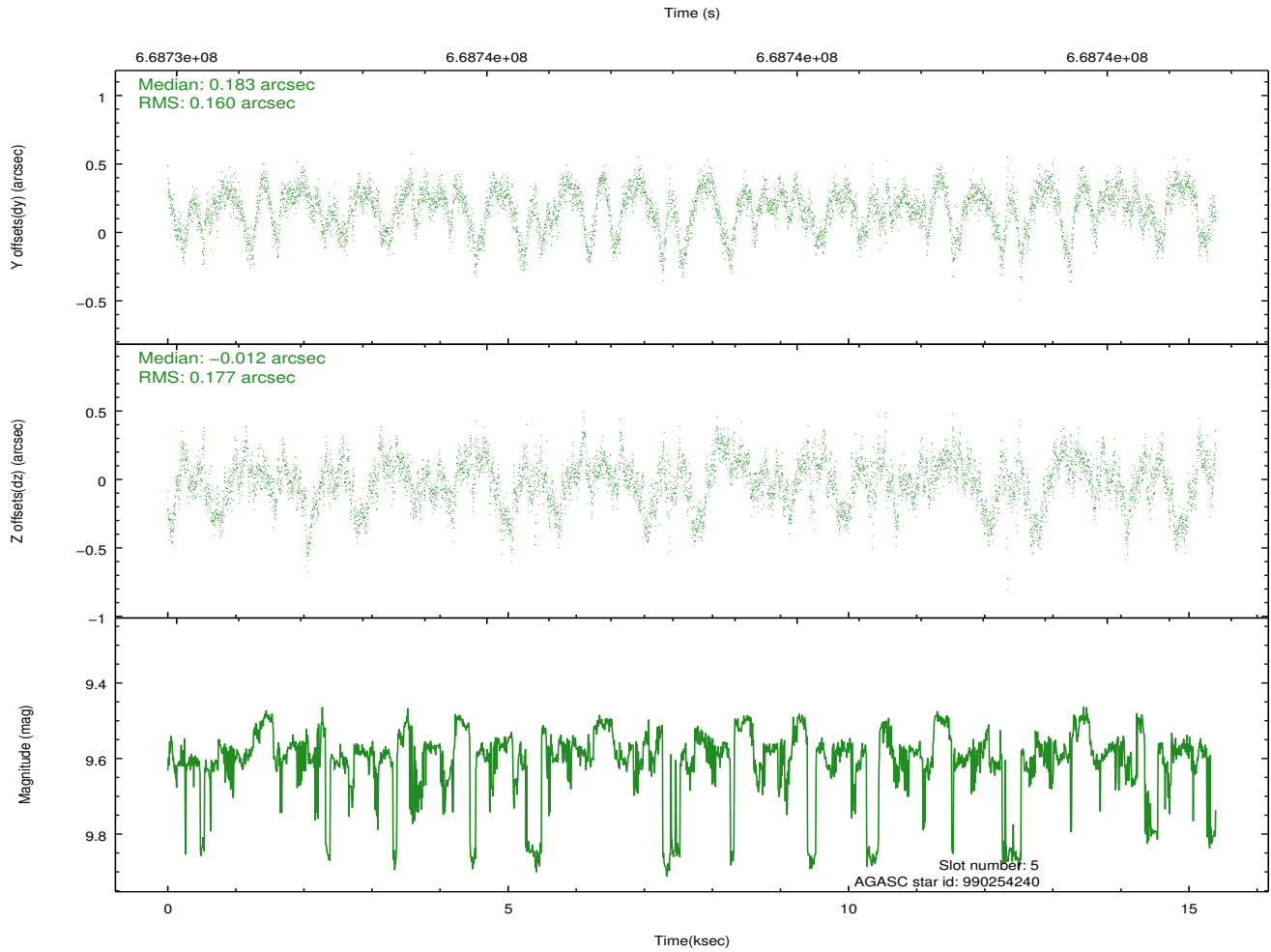
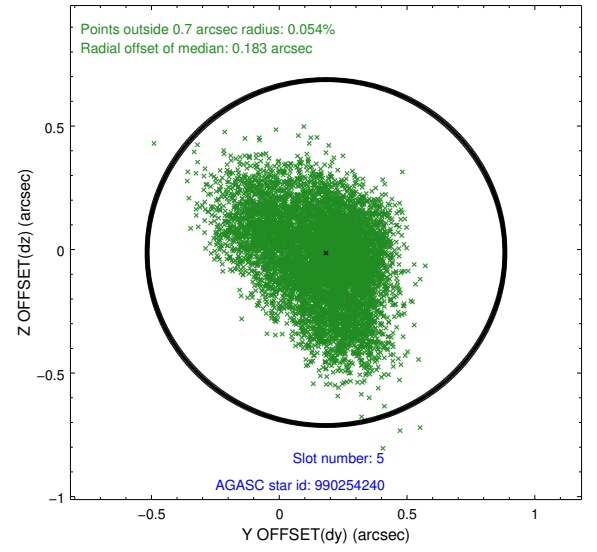
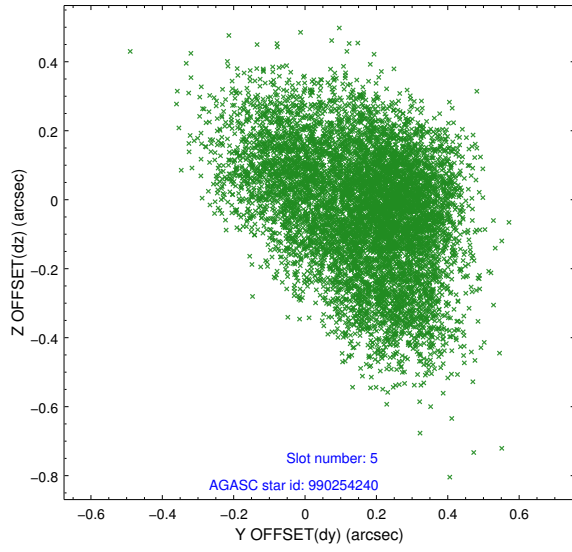
2.4.1 Slot 3



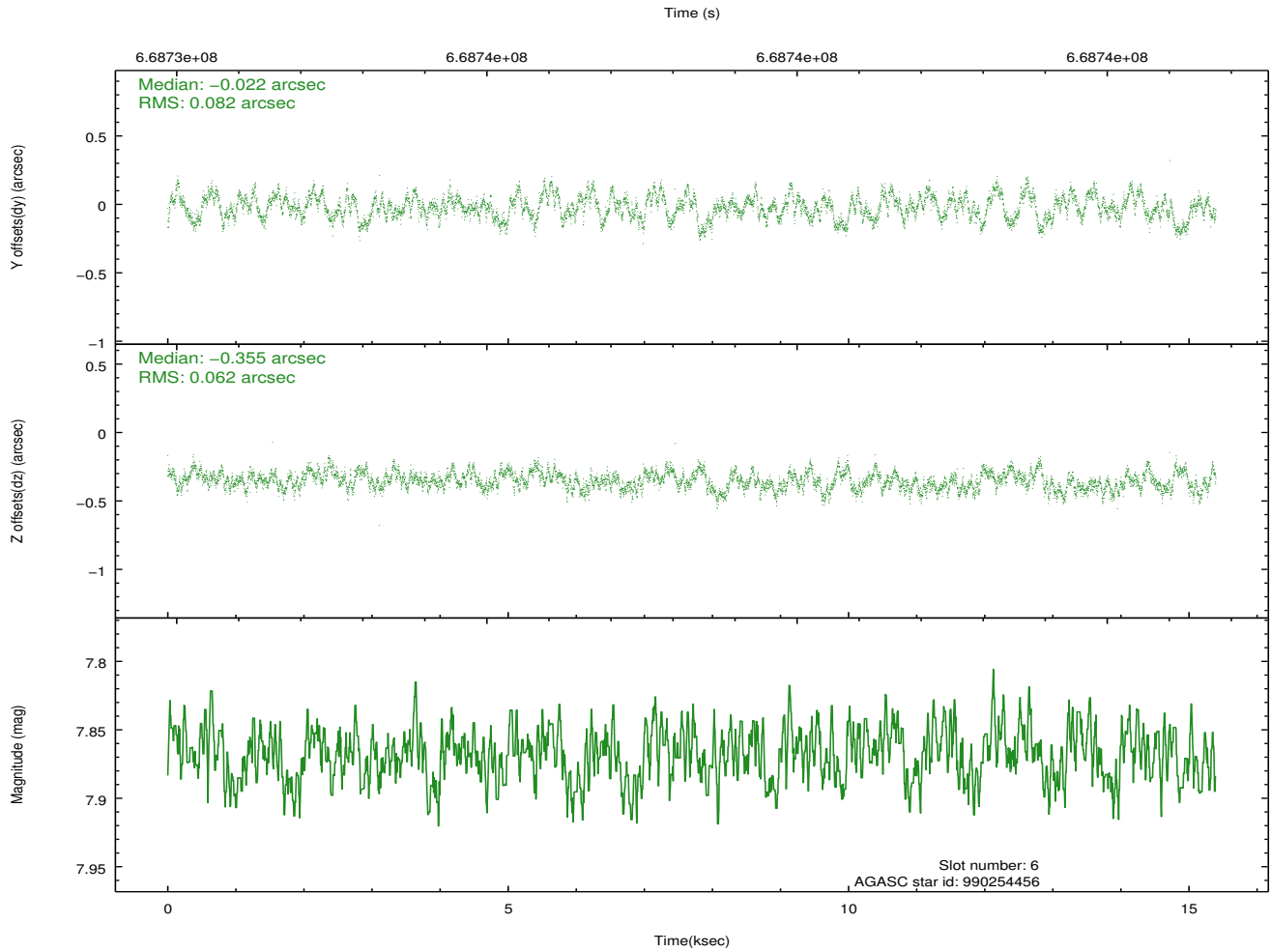
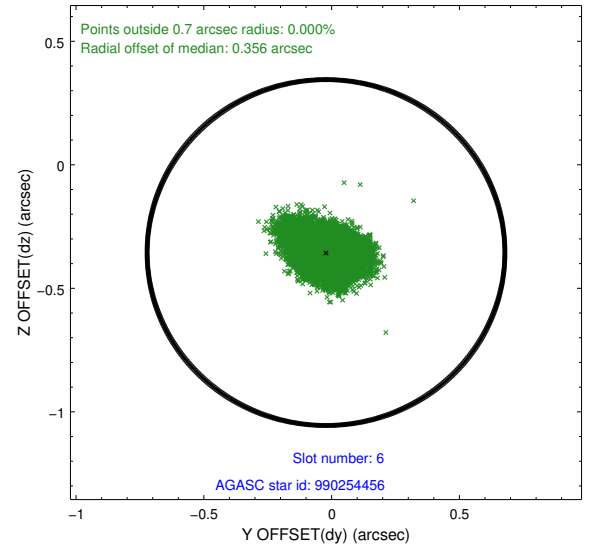
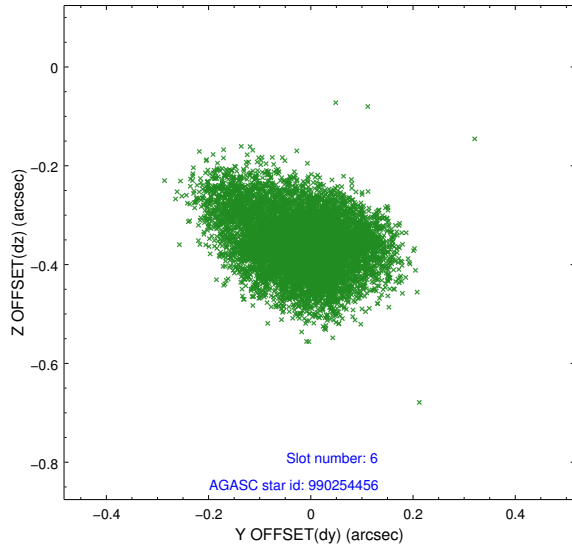
2.4.2 Slot 4



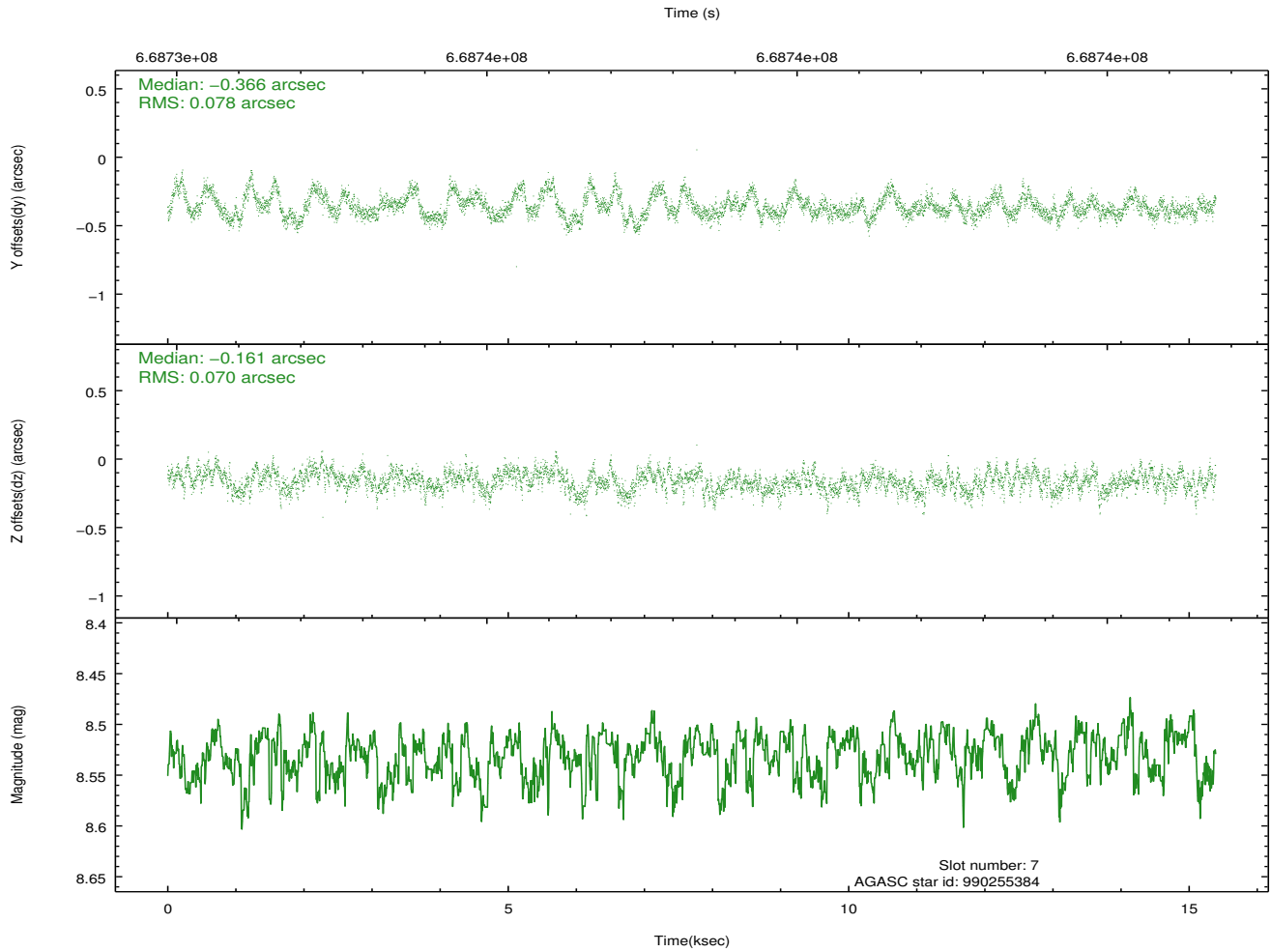
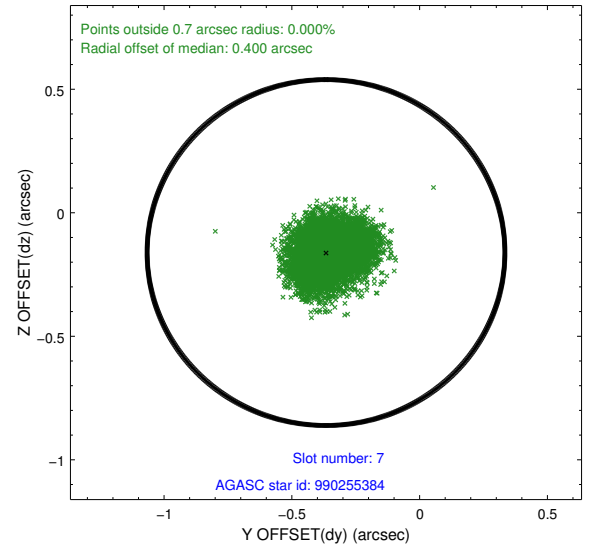
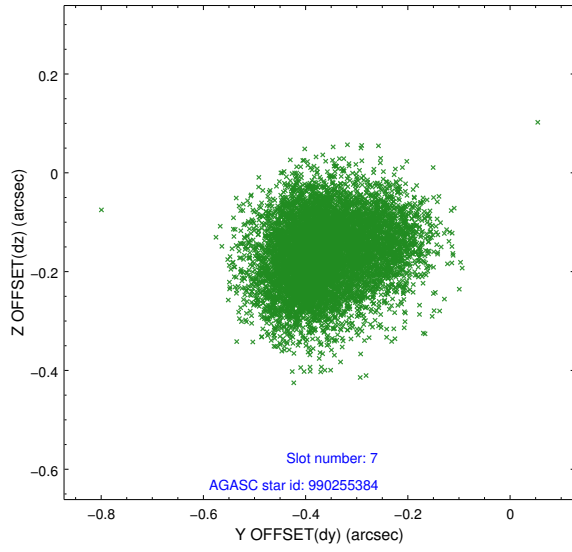
2.4.3 Slot 5



2.4.4 Slot 6

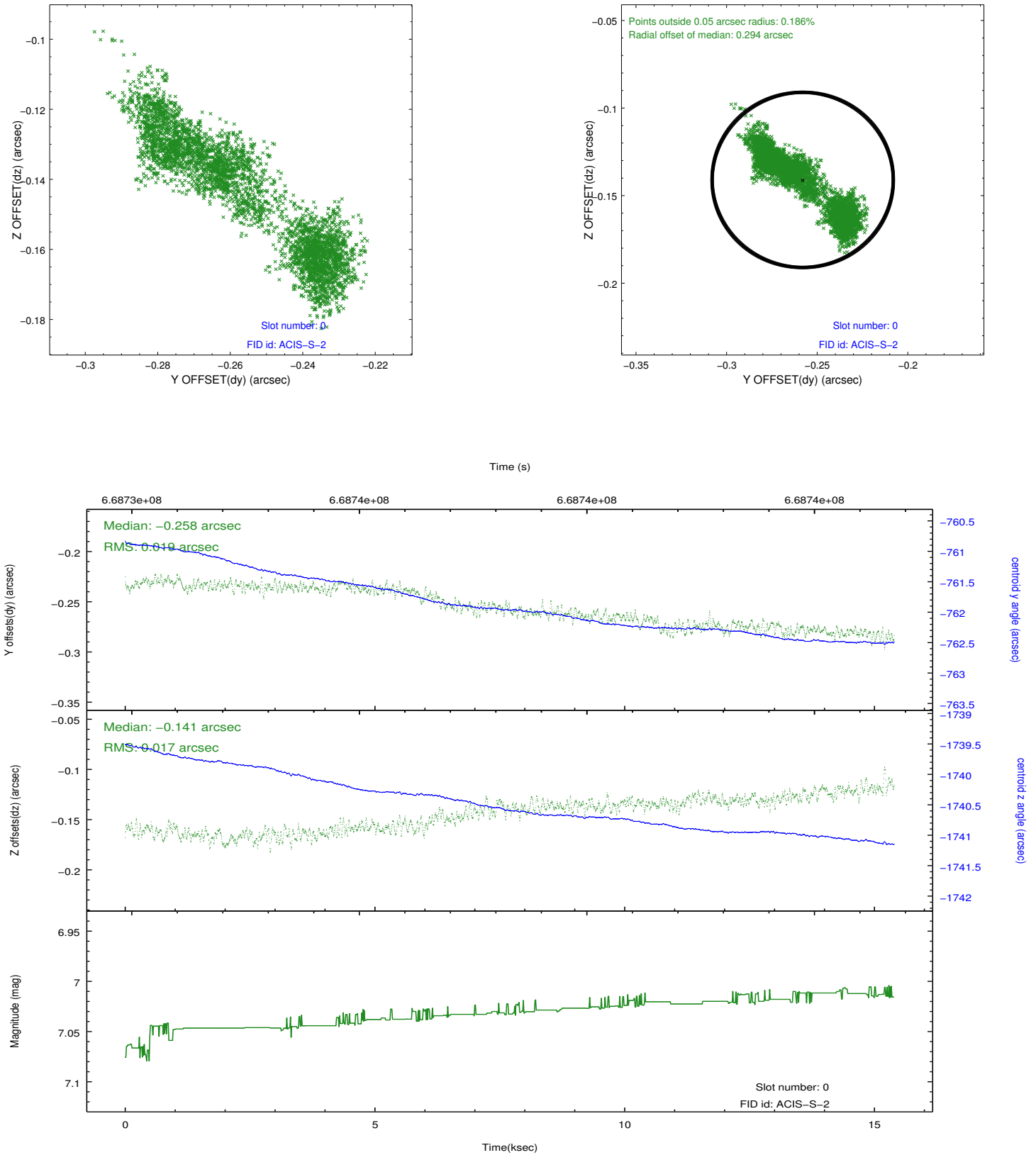


2.4.5 Slot 7

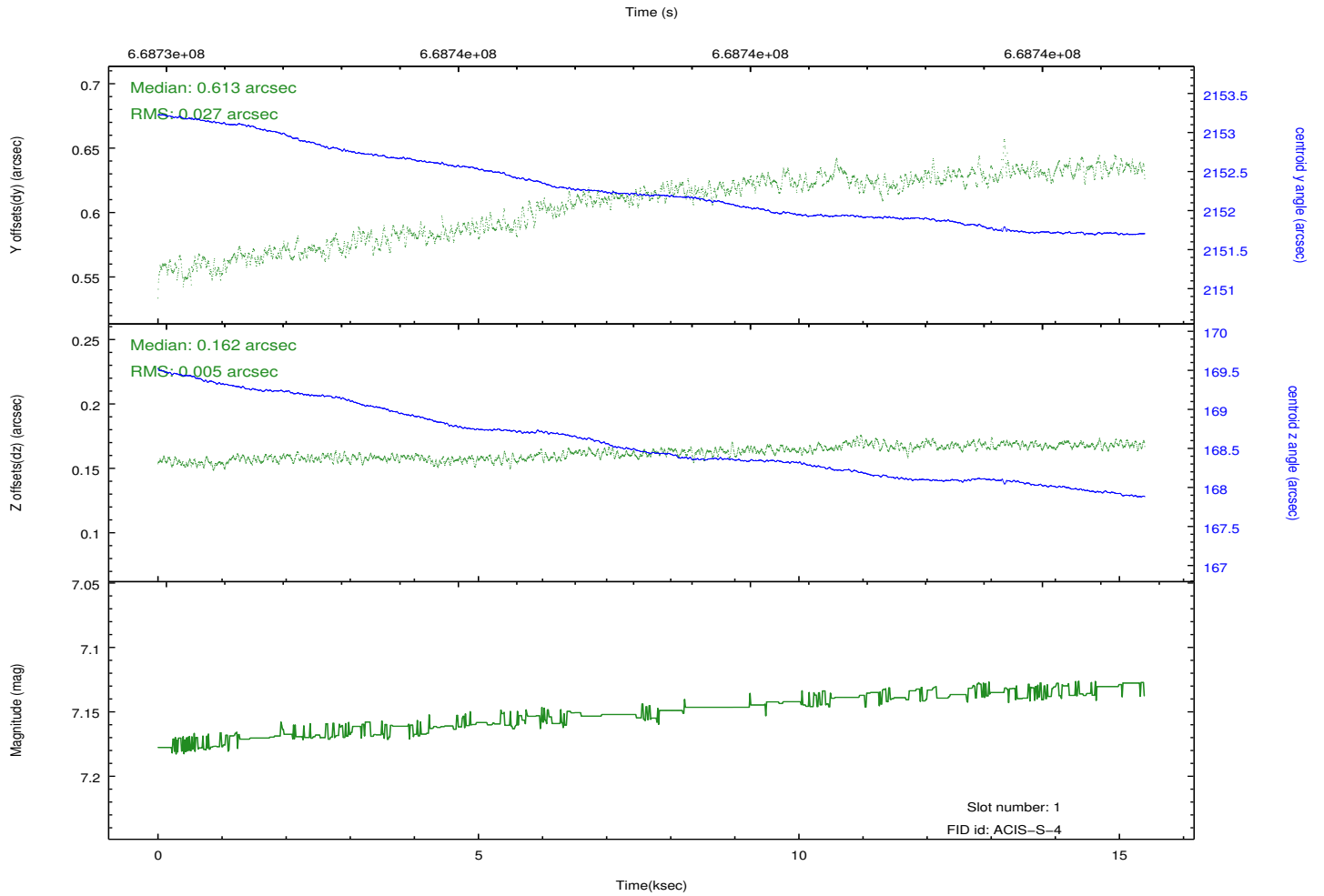
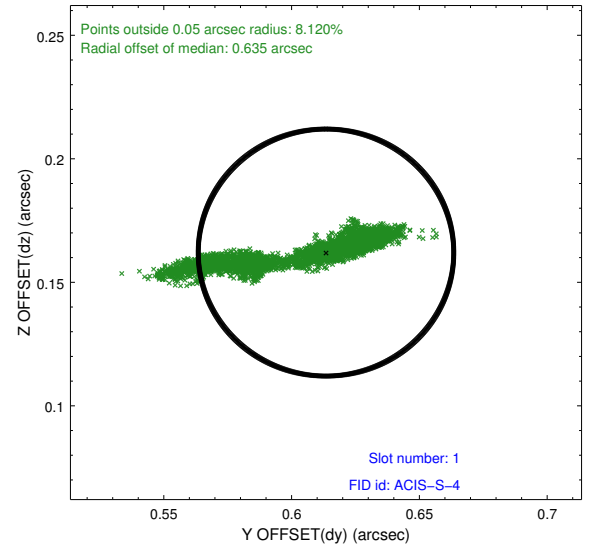
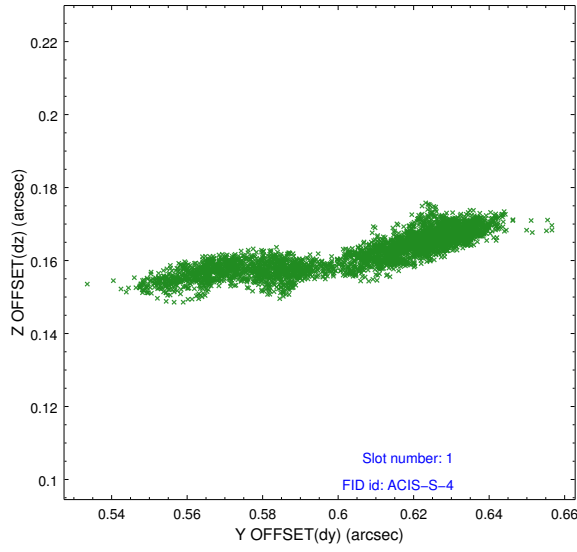


2.5 FID Slots

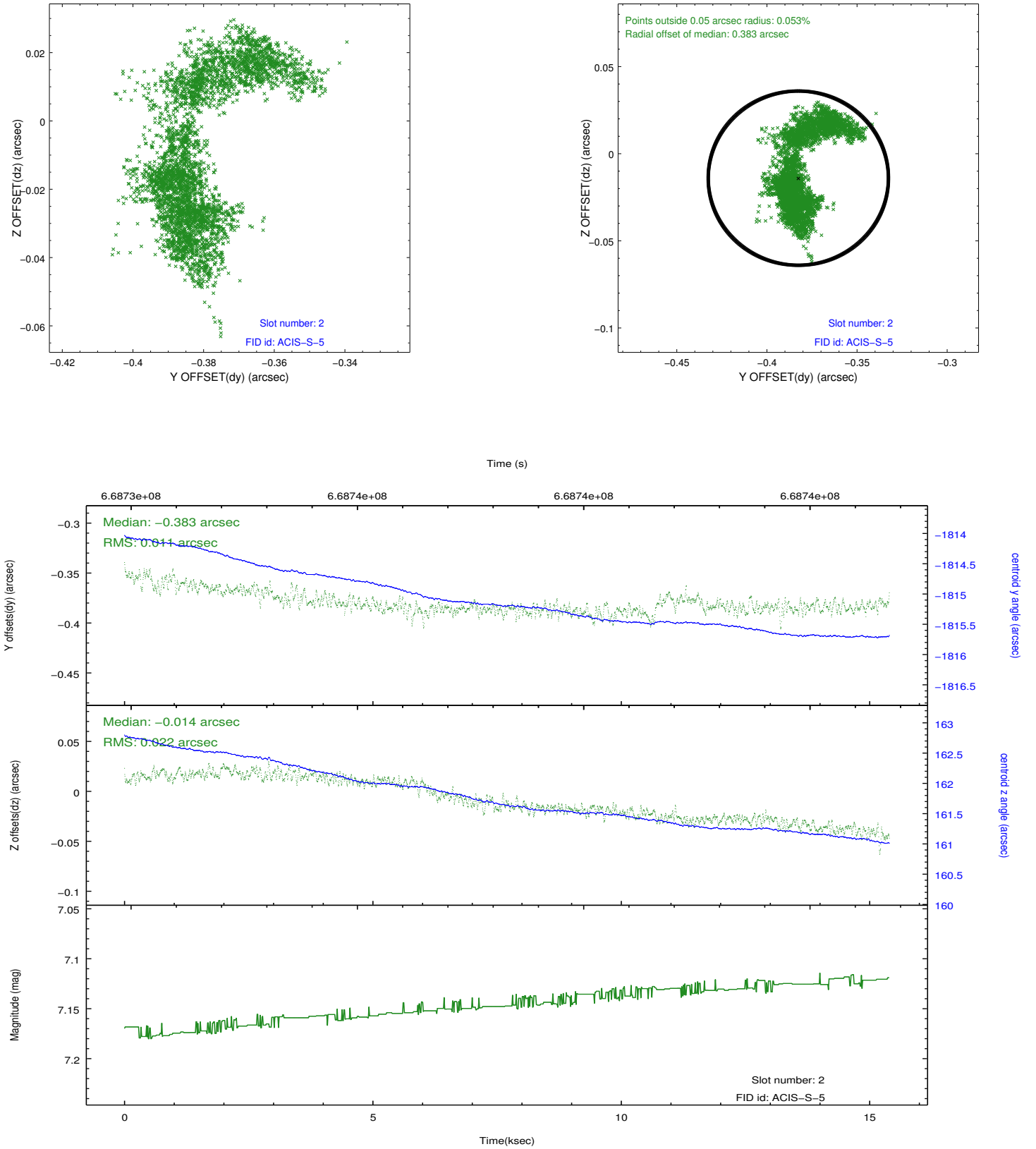
2.5.1 Slot 0



2.5.2 Slot 1



2.5.3 Slot 2



A Summary

A.1 Status

V&V Scientist	Jen Lauer
V&V Date (YYYY-MM-DD)	2019.03.12
V&V Edition	1
V&V Disposition and Status	OK
V&V Charge Time	15.053233732343

A.2 Comments