

V&V Reference Report

L2 ASCDS Version : 10.7.1

Observation 22089 - L2 Version 1
Chandra X-Ray Center

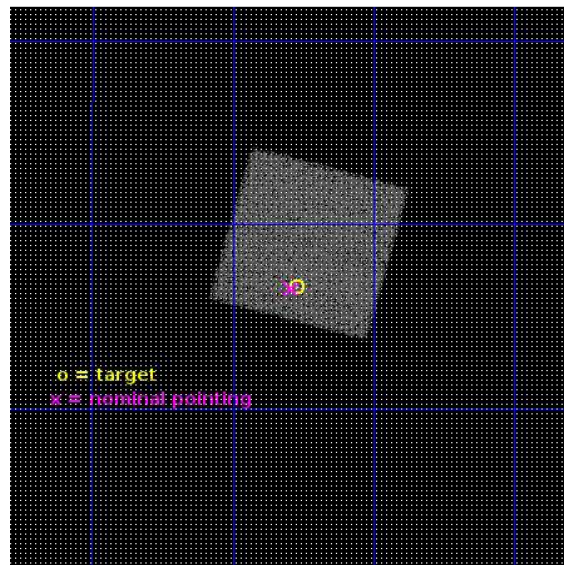
L2 Processing Date : Feb 8 2019

Contents

1	Front	2
2	OBI	3
2.1	OBI	3
2.1.1	Images	3
2.1.2	Bias	3
2.1.3	Parameters	4
2.1.4	Events	4
2.2	Compared Parameters	5
2.3	Aspect	6
2.4	Star Slots	9
2.4.1	Slot 3	9
2.4.2	Slot 4	10
2.4.3	Slot 5	11
2.4.4	Slot 6	12
2.4.5	Slot 7	13
2.5	FID Slots	14
2.5.1	Slot 0	14
2.5.2	Slot 1	15
2.5.3	Slot 2	16
A	Summary	17
A.1	Status	17
A.2	Comments	17

1 Front

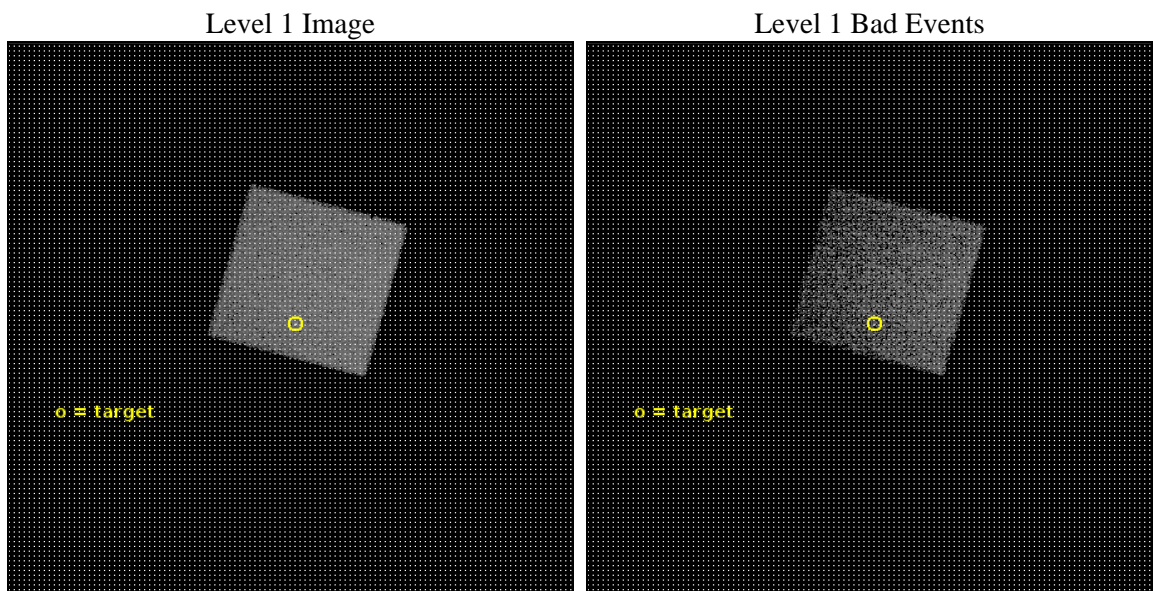
seq_num	703860	Sequence number
obs_id	22089	Observation id
title	C-BASS: A Chandra Legacy Survey of AGN at the Highest Spatial Resolutions	Proposal title
observer	Michael Koss	Principal investigator
object	UGC4211	Source name
dtcycle	0	
cycle	P	events from which exps? Prim/Second/Both
ra_targ	121.193275	Observer's specified target RA [deg]
dec_targ	10.776682	Observer's specified target Dec [deg]
ra_nom	121.19790457701	Nominal RA [deg]
dec_nom	10.77502476407	Nominal Dec [deg]
roll_nom	285.24155557525	Nominal Roll [deg]
revision	1	Processing version of data
ontime	10091.324572921	Sum of GTIs [s]
livetime	9955.1382812336	Livetime [s]
ontime7	10091.324572921	Sum of GTIs [s]
l2events	42945	Number of level 2 events



2 OBI

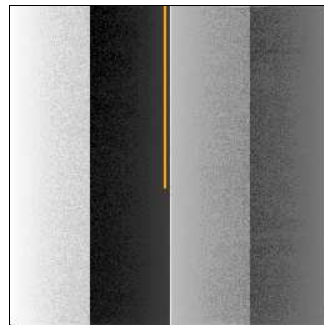
2.1 OBI

2.1.1 Images



2.1.2 Bias

Chip 7



2.1.3 Parameters

obi_num	0	Obi number	sched_exp_time	10000.000000	[s] Scheduled observation exposure time
ascdsver	10.7.1	Processing system revision	ontime	10091.324572921	Sum of GTIs [s]
caldsver	4.8.2	 	ontime7	10091.324572921	Sum of GTIs [s]
date	2019-02-08T15:01:03	Date and time of file creation	l1events	98352	Number of level 1 events
revision	1	Processing version of data			

2.1.4 Events

	ccd 7
level 1 events	98352
rejected events	54268
rejected %	55%

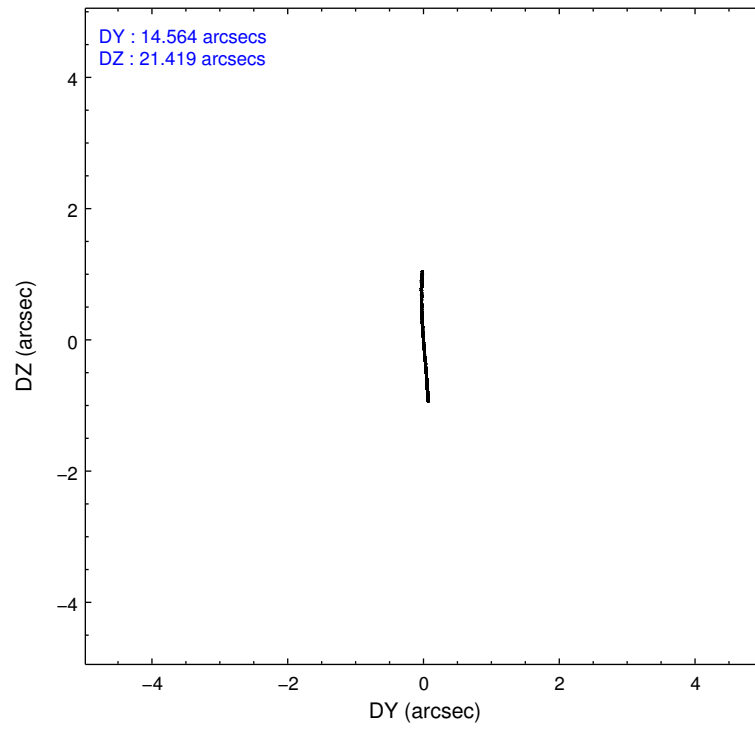
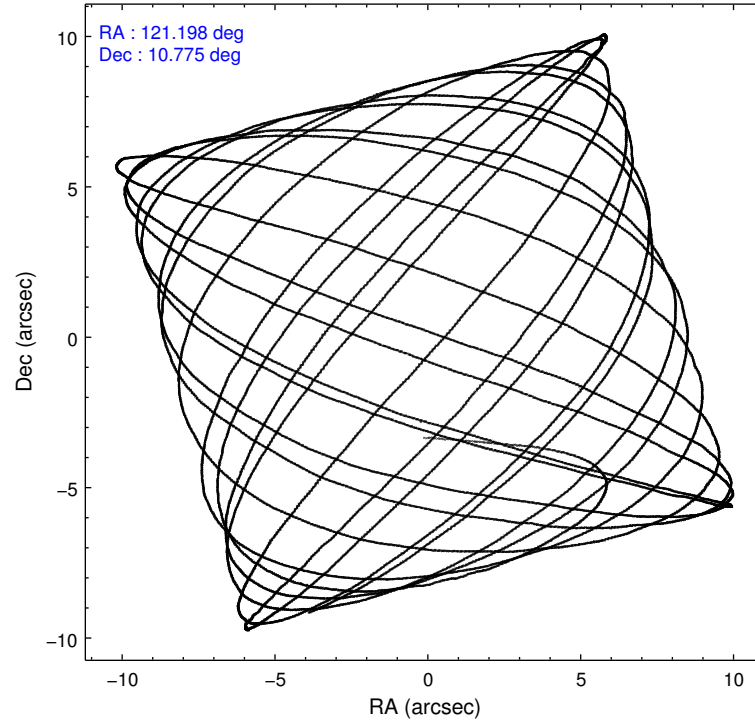
	ccd 7
grade 0 events	3884
	3%
grade 1 events	137
	0%
grade 2 events	9479
	9%
grade 3 events	3518
	3%
grade 4 events	3514
	3%
grade 5 events	9782
	9%
grade 6 events	23714
	24%
grade 7 events	44324
	45%

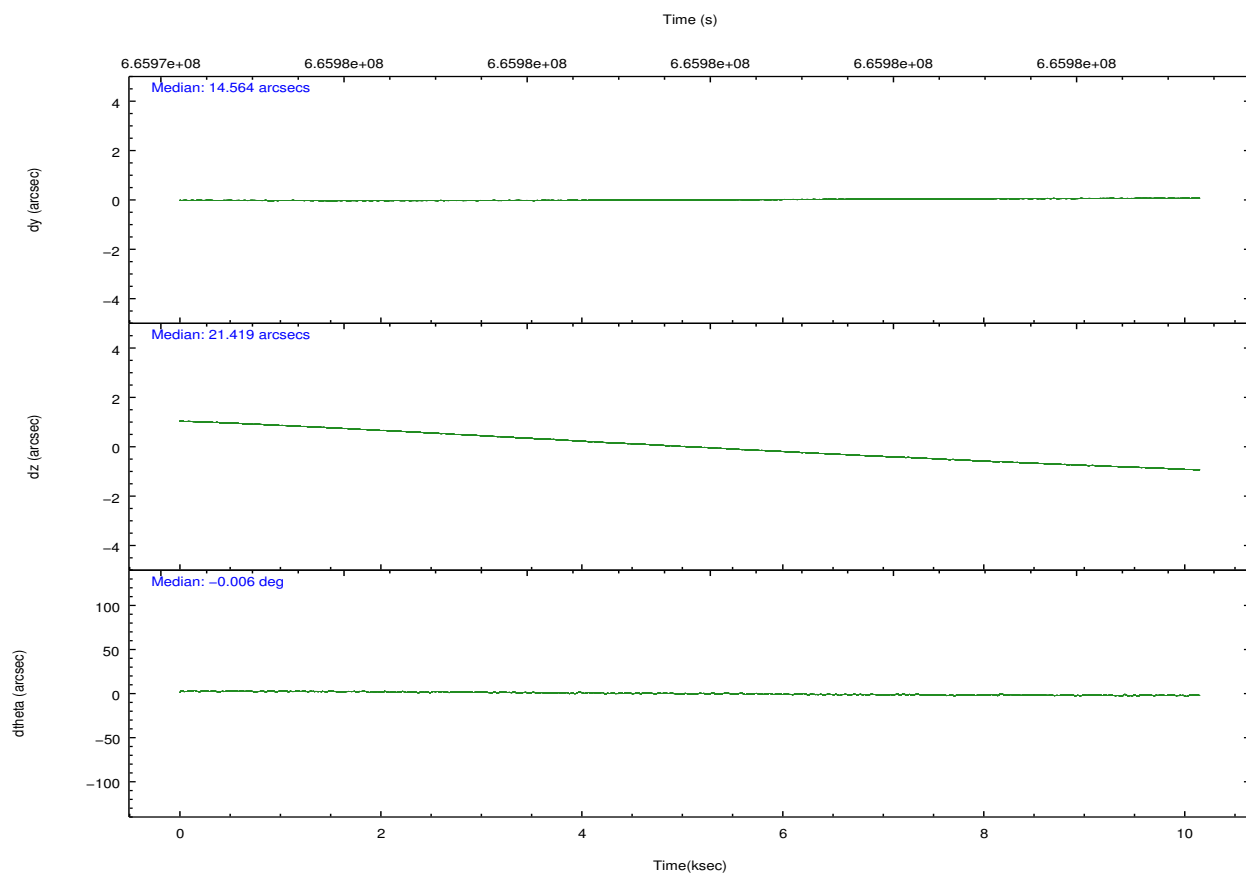
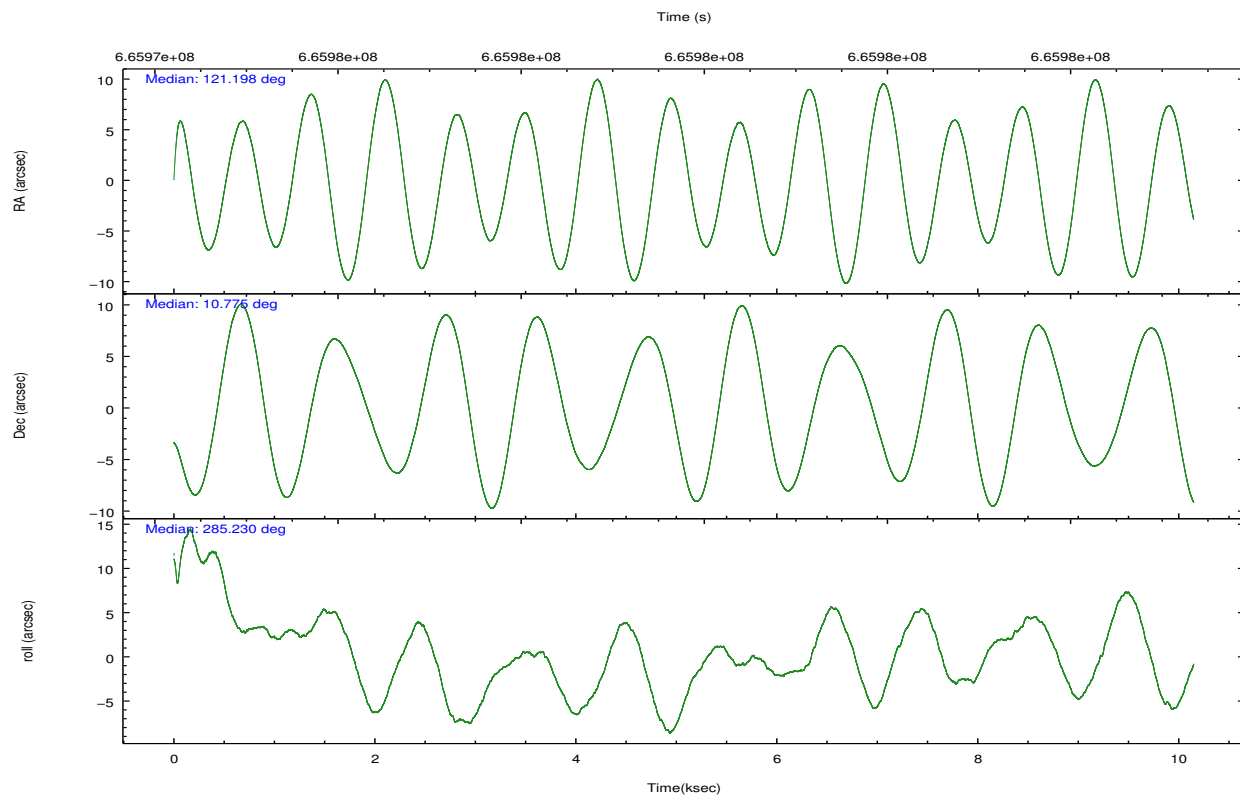
2.2 Compared Parameters

Parameter	Planned	Actual
Instrument	ACIS	ACIS
Detector	ACIS-7	ACIS-7
Grating	NONE	NONE
Data mode	VFAINT	VFAINT
Observation mode	POINTING	POINTING
[deg] Pointing RA	121.177784	121.1979045770071
[deg] Pointing Dec	10.794111	10.77502476407036
[deg] Pointing Roll	285.088684	285.2415555752491
[mm] SIM focus pos	-0.684267	-0.6828225247311905
[mm] SIM defocus	0	0.001444936568705701
[mm] SIM translation stage pos	-190.132523	-190.1425803651734
[mm] SIM translation stage offset	0	0.01005778216563158
[s] Observation start time (MET)	665974842.184000	665973536.69586
Observation start date	2019-02-08T00:59:33	2019-02-08T00:38:56
[s] Observation end time (MET)	665984842.184000	665986121.13412
Observation end date	2019-02-08T03:46:13	2019-02-08T04:08:41
Read mode	TIMED	TIMED

Parameter	Planned	Actual
Obspar format version number	7	7
Obspar file type	PREDICTED	ACTUAL
Obspar update status	NONE	UPDATED
Number of optional ACIS chips dropped	0	0
On-chip summing requested	N	N
Subarray requested	NONE	NONE
Alternating exposures requested	N	N
[s] Primary exposure time	0.000000	3

2.3 Aspect



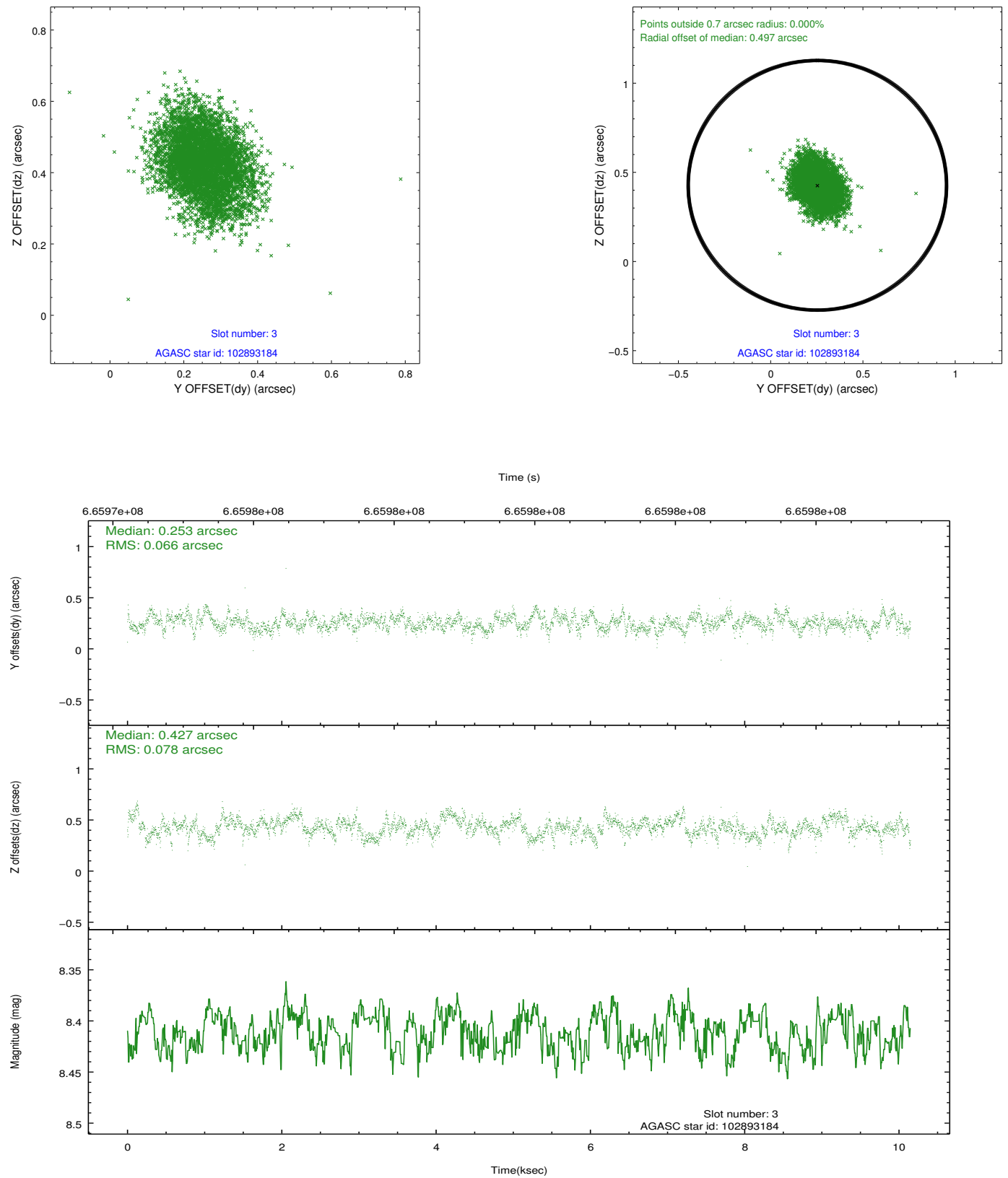


Slot Statistics

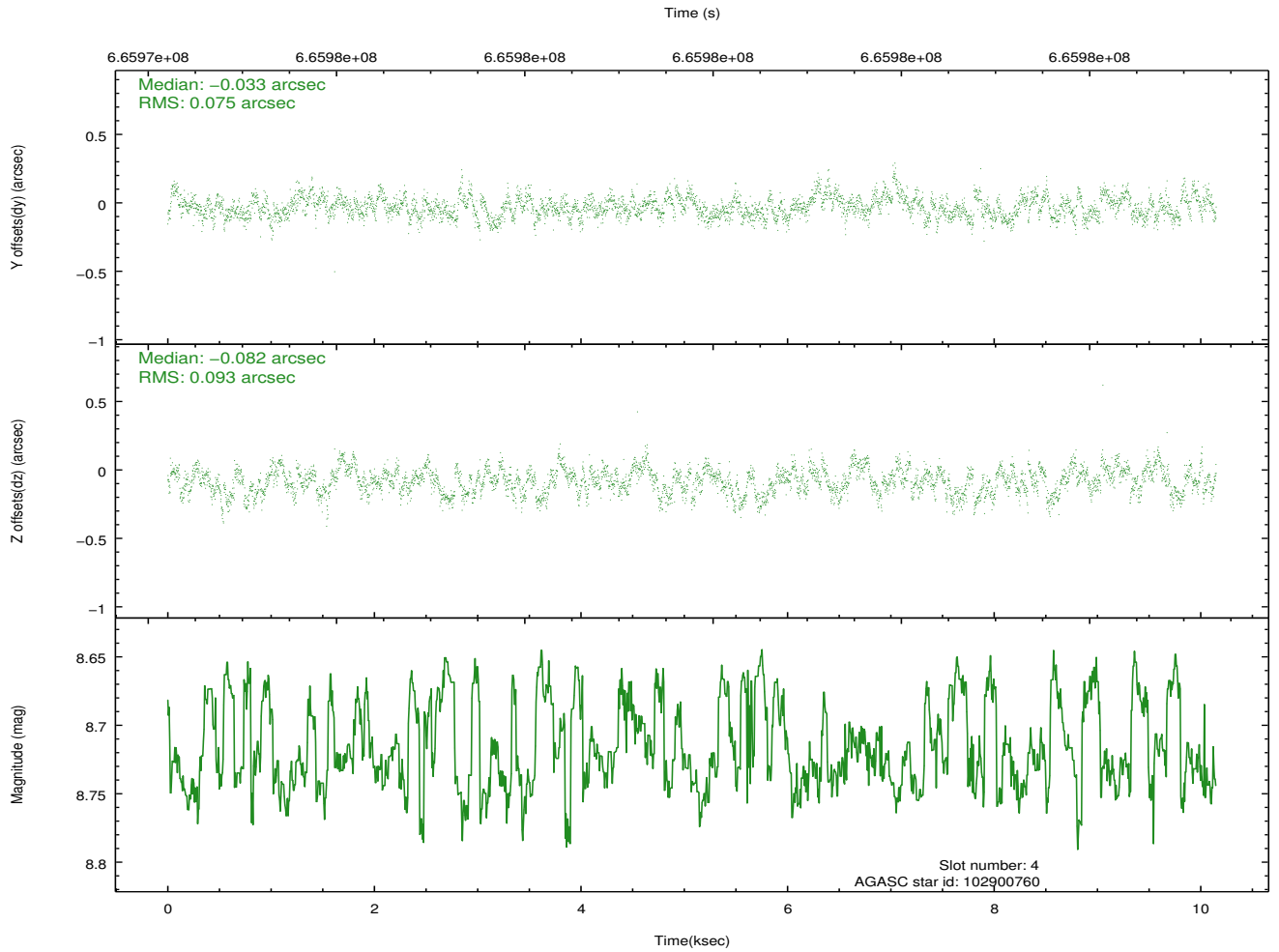
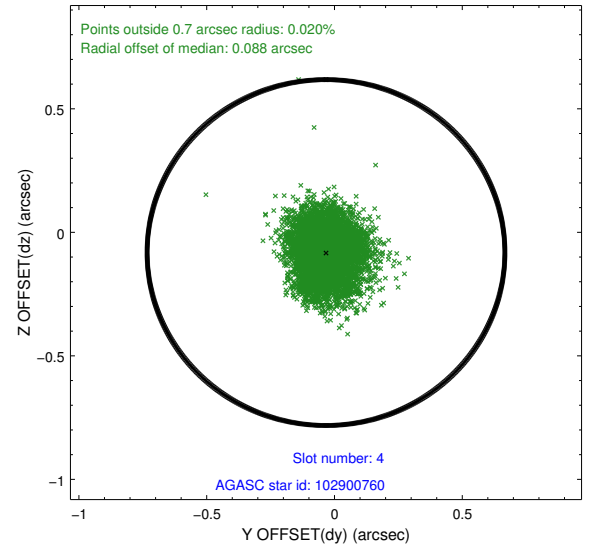
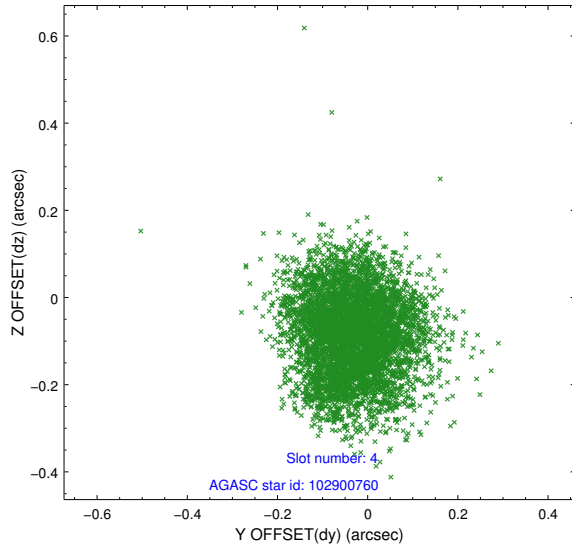
pt	status	used	id	mag	n_pts	frac_pts	med_dy	med_dz	dr1	dr2	ra	dec	mean_y	mea
0	FID		ACIS-S-2	6.98	2476	1.000	-0.332	-0.159	0.019	0.028	0.000000	0.000000	-767.81	-1743
1	FID		ACIS-S-4	7.10	2476	1.000	0.737	0.203	0.014	0.022	0.000000	0.000000	2146.24	165
2	FID		ACIS-S-5	7.08	2476	1.000	-0.435	-0.035	0.018	0.026	0.000000	0.000000	-1820.14	159
3	GUIDE	used	102893184	8.41	4950	1.000	0.253	0.427	0.108	0.173	121.068238	10.856757	-318.65	-315
4	GUIDE	used	102900760	8.72	4944	1.000	-0.033	-0.082	0.129	0.200	120.955175	10.398260	1170.52	-1131
5	GUIDE	used	102902504	8.62	4944	1.000	0.034	0.088	0.126	0.200	120.926314	10.479843	860.47	-1153
6	GUIDE	used	102906648	7.78	4950	1.000	-0.097	-0.095	0.080	0.130	121.088001	10.249590	1809.92	-817
7	GUIDE	used	102896576	8.77	4947	1.000	-0.159	-0.337	0.109	0.173	121.831200	10.921709	154.94	2349

2.4 Star Slots

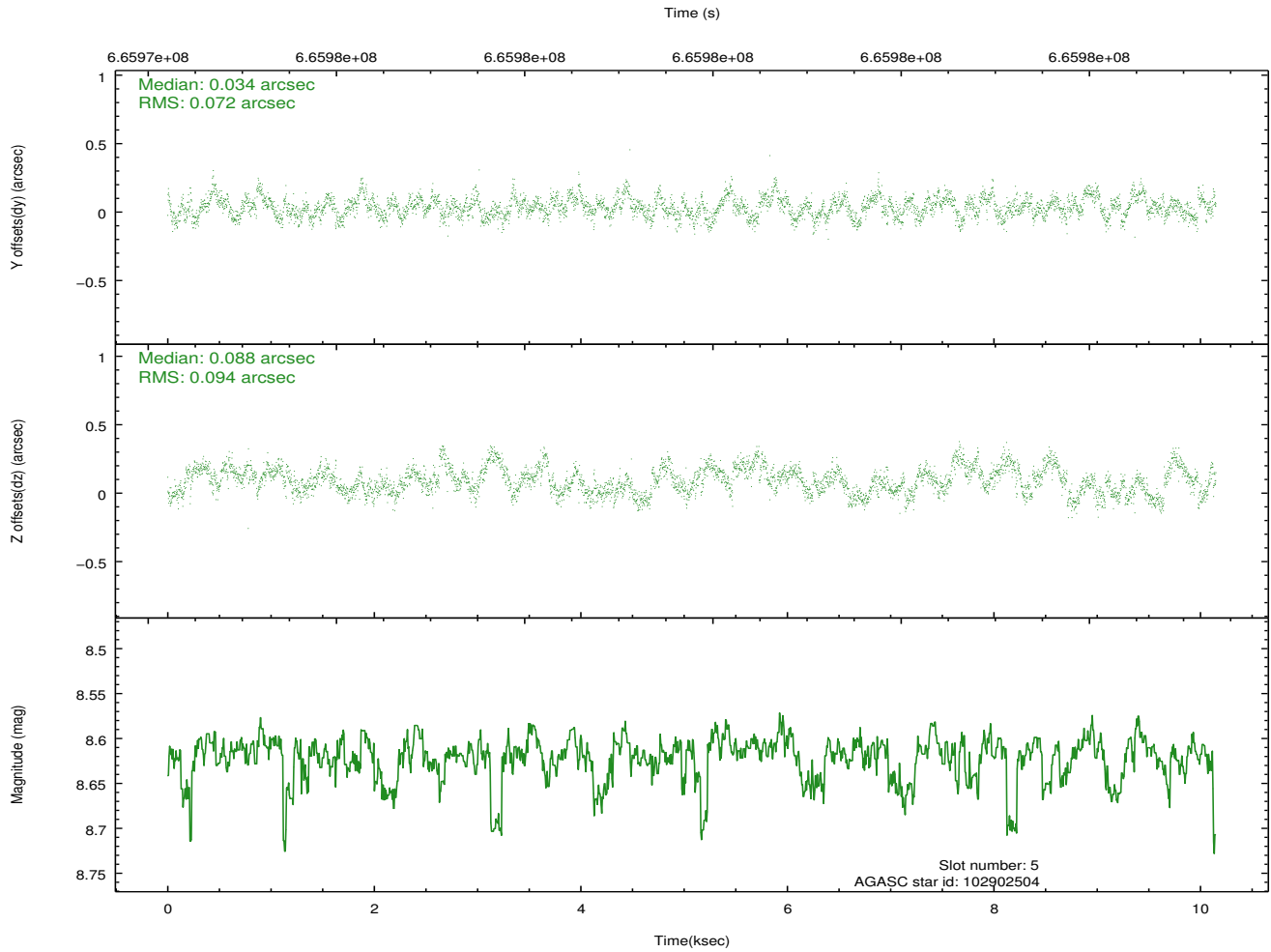
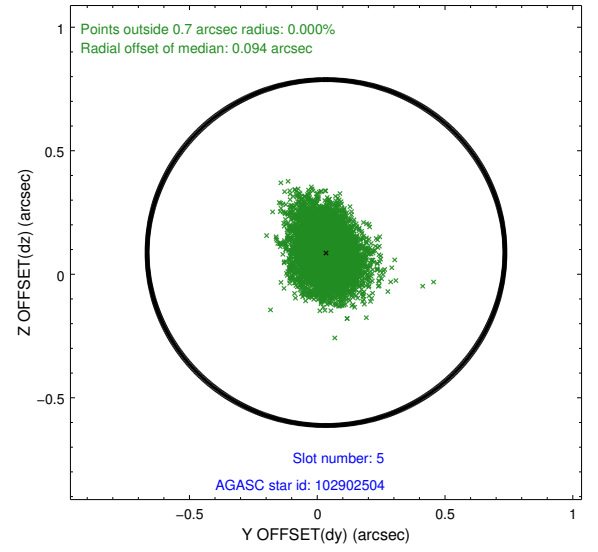
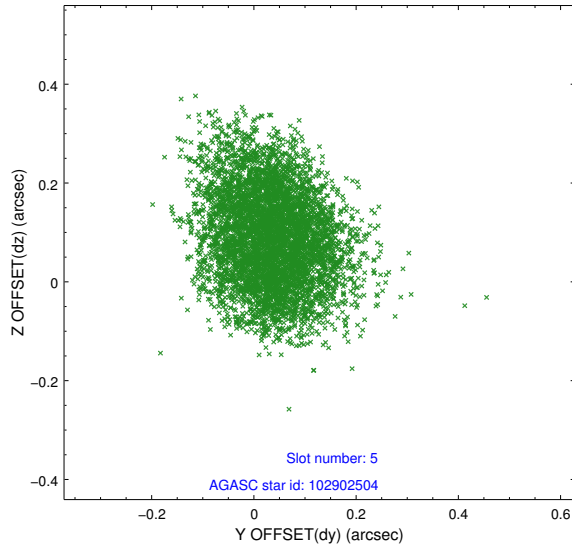
2.4.1 Slot 3



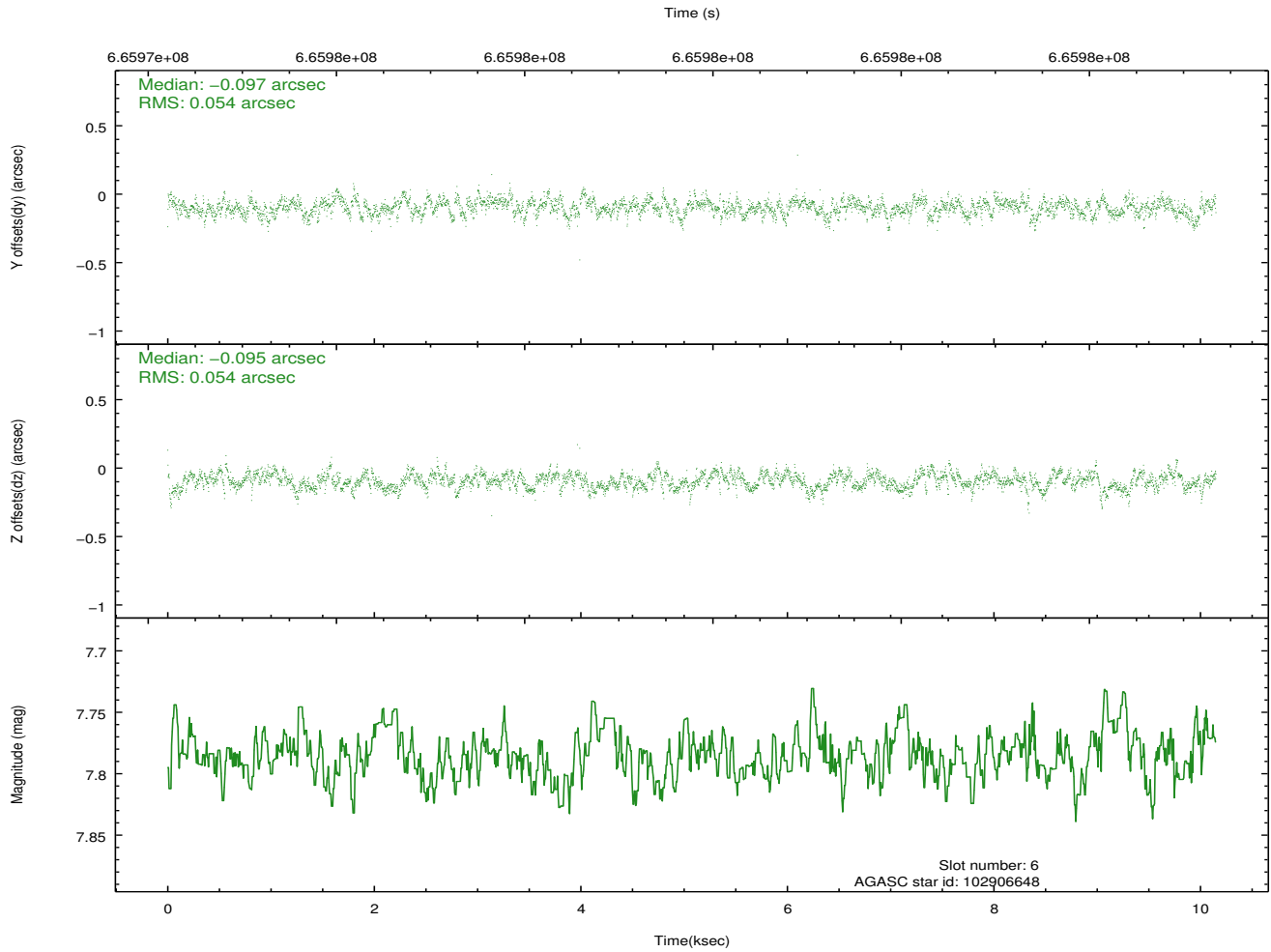
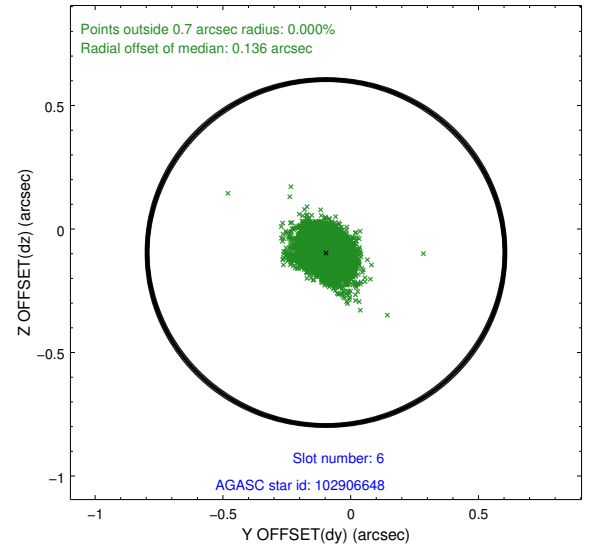
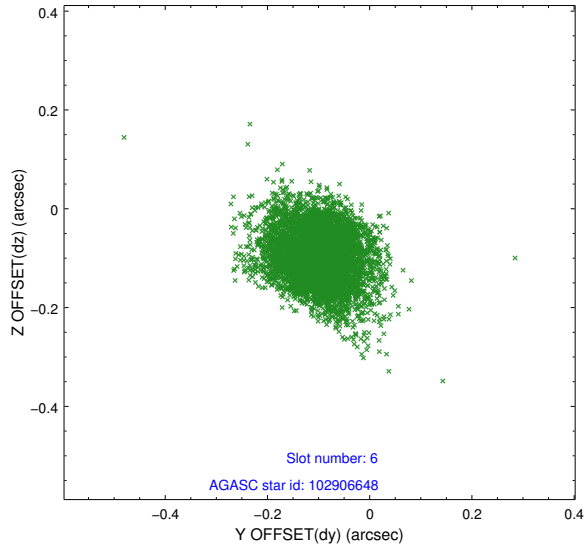
2.4.2 Slot 4



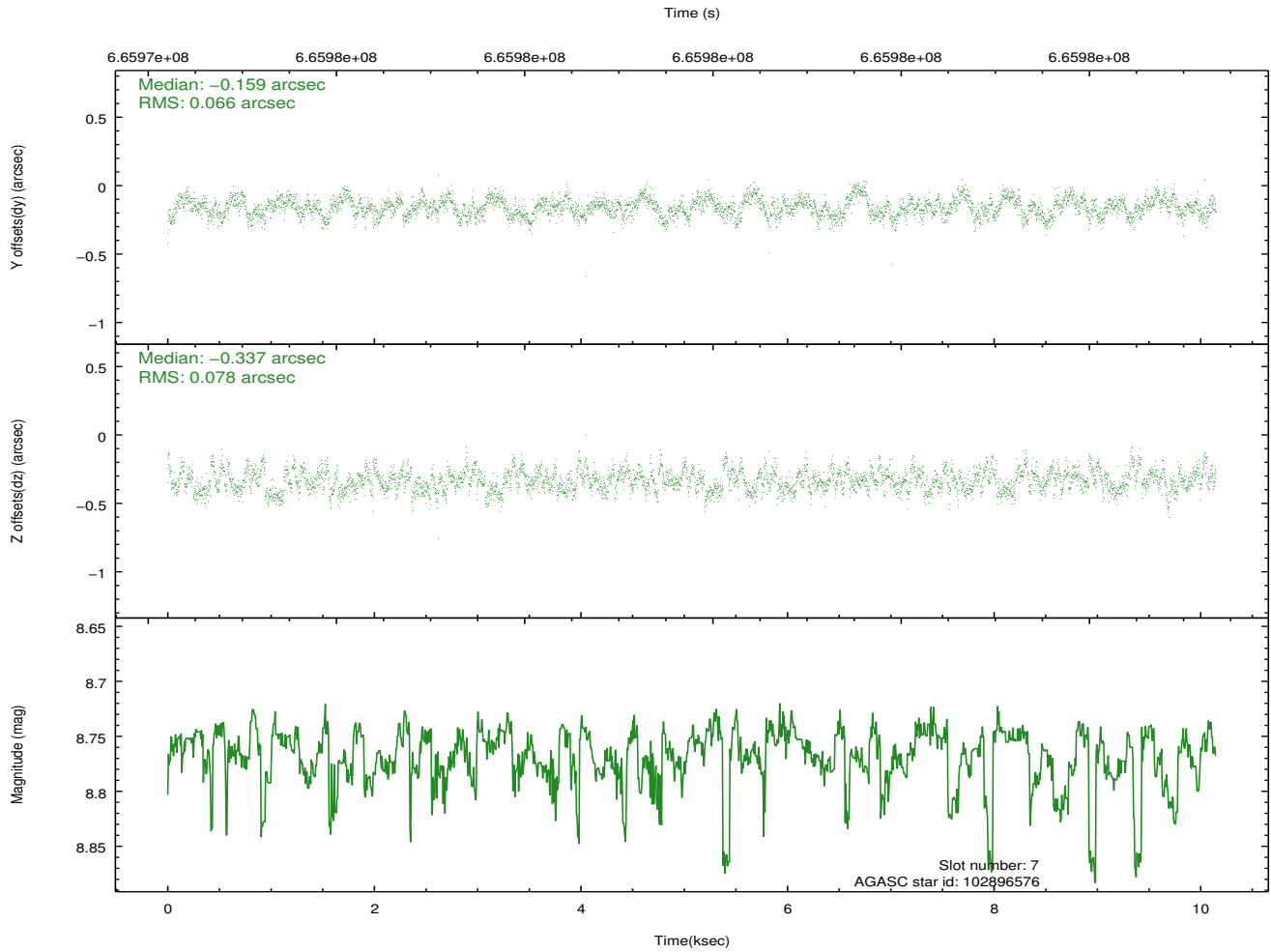
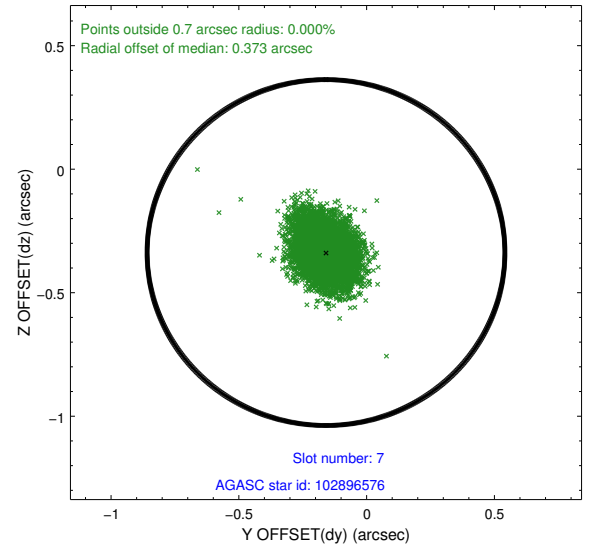
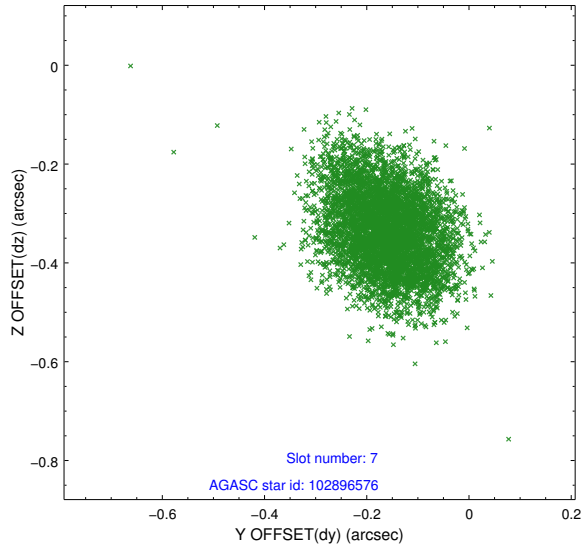
2.4.3 Slot 5



2.4.4 Slot 6

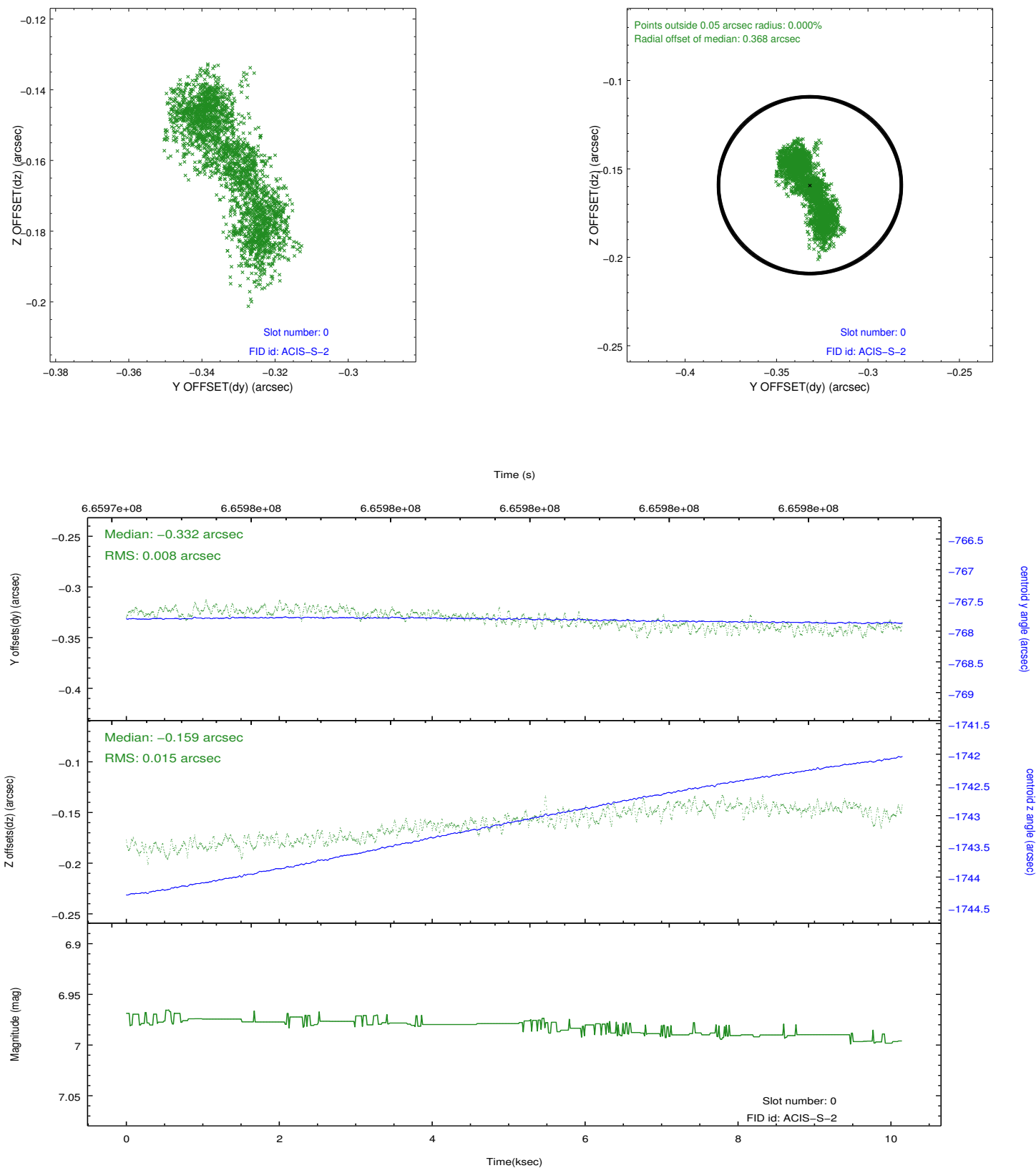


2.4.5 Slot 7

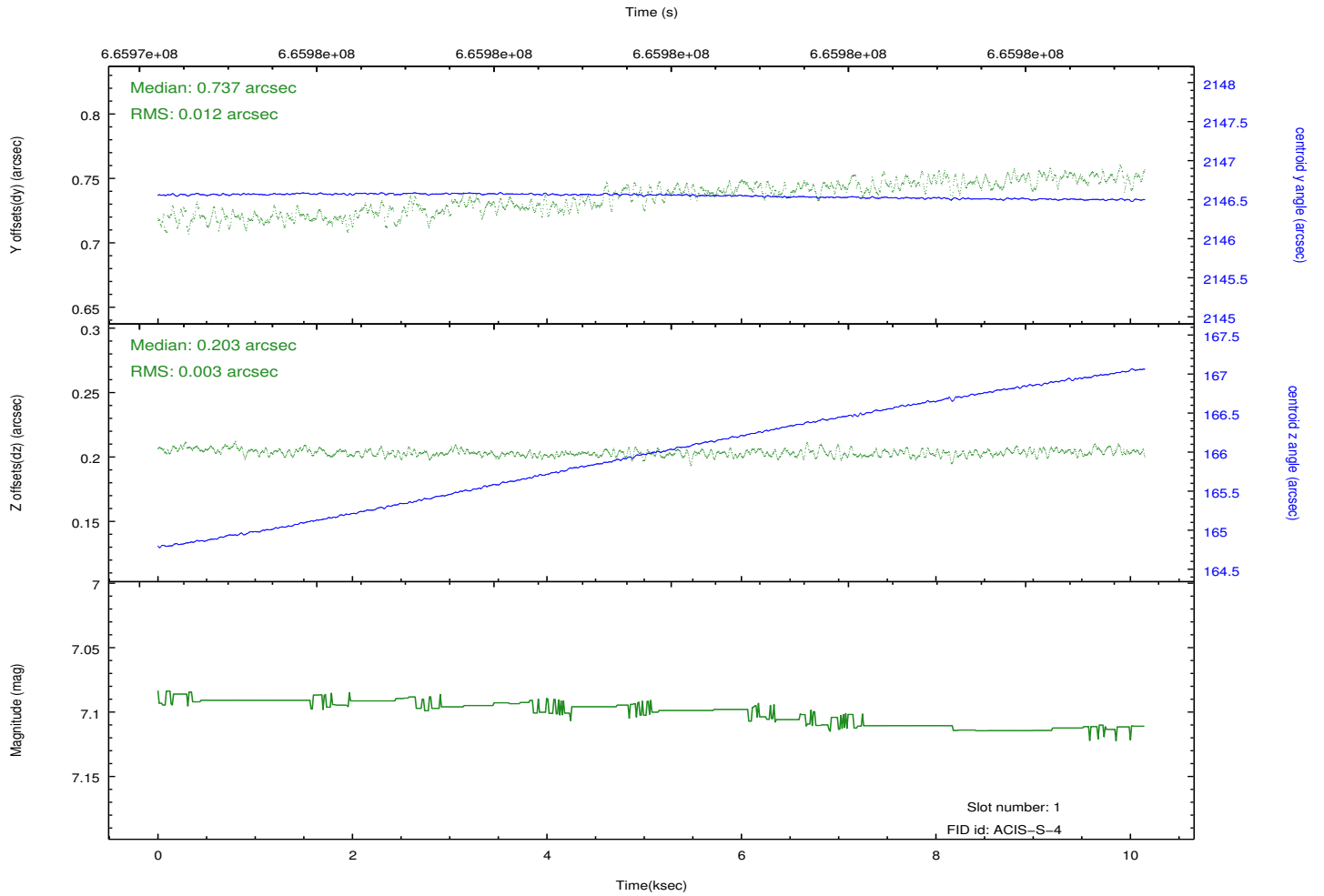
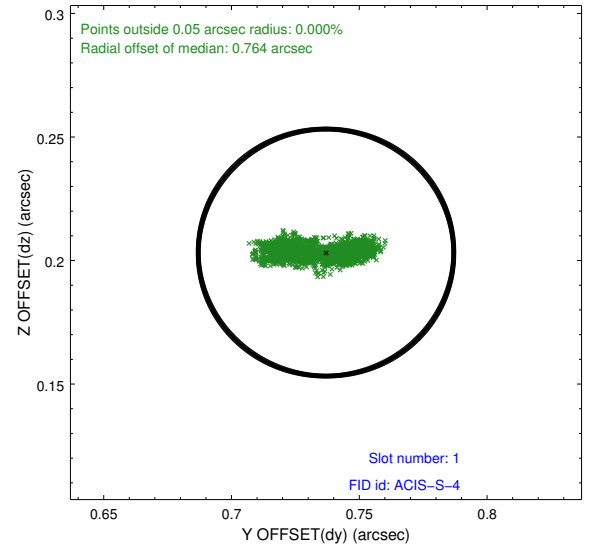
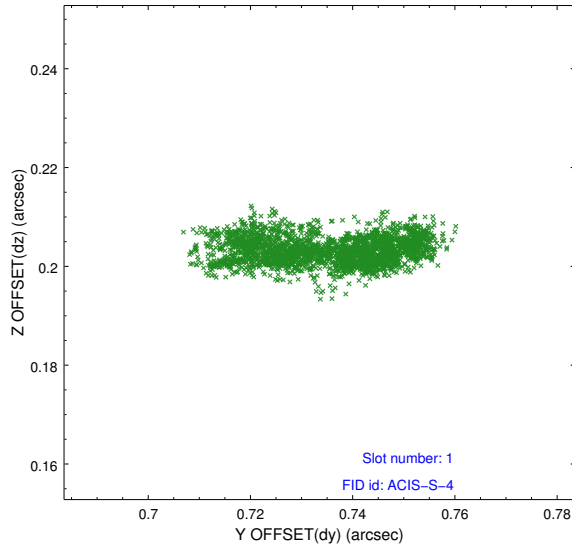


2.5 FID Slots

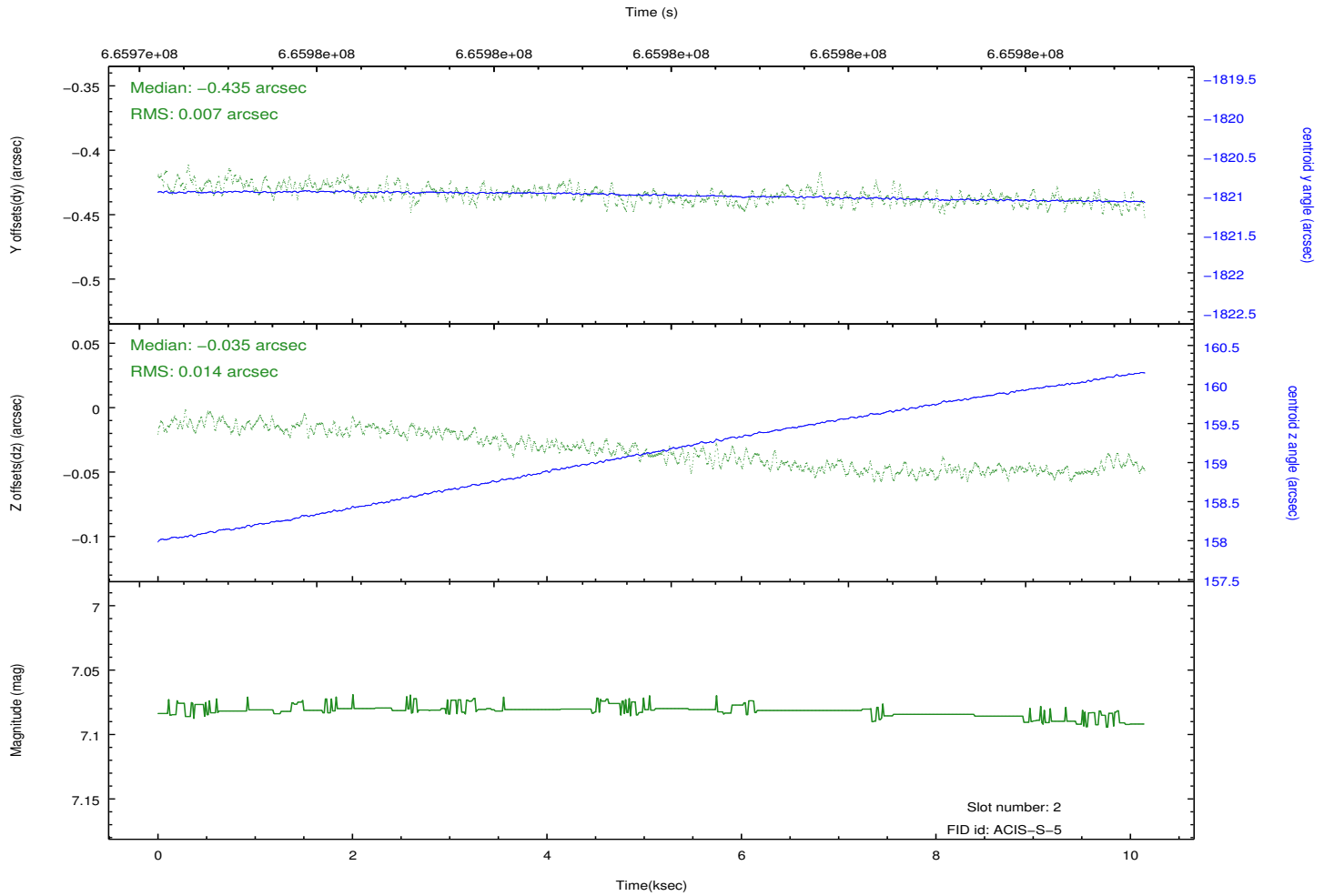
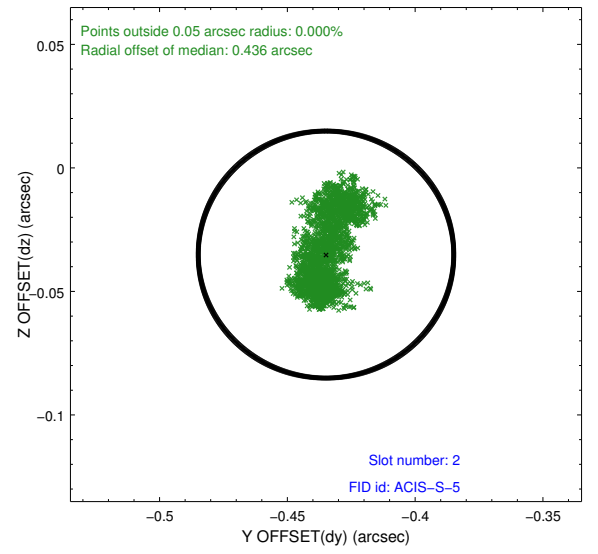
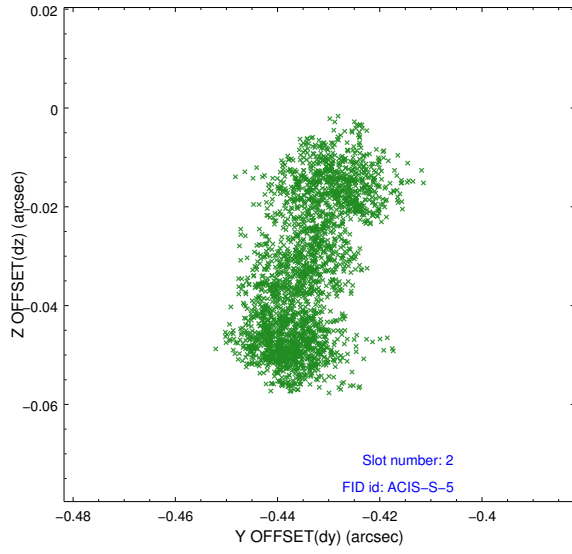
2.5.1 Slot 0



2.5.2 Slot 1



2.5.3 Slot 2



A Summary

A.1 Status

V&V Scientist	Beth Sundheim
V&V Date (YYYY-MM-DD)	2019.02.08
V&V Edition	1
V&V Disposition and Status	OK
V&V Charge Time	10.091324572921

A.2 Comments