

V&V Reference Report

L2 ASCDS Version : 10.5.4

Observation 19937 - L2 Version 1
Chandra X-Ray Center

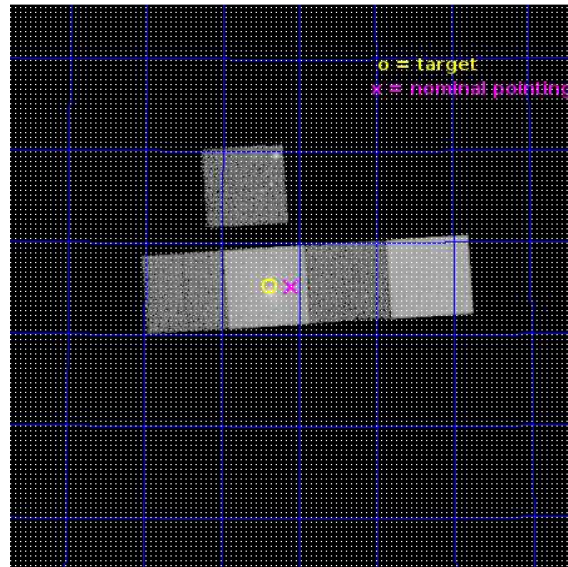
L2 Processing Date : Jun 8 2017

Contents

1	Front	2
2	OBI	3
2.1	OBI	3
2.1.1	Images	3
2.1.2	Bias	3
2.1.3	Parameters	4
2.1.4	Events	4
2.2	Compared Parameters	5
2.3	Aspect	6
2.4	Star Slots	9
2.4.1	Slot 3	9
2.4.2	Slot 4	10
2.4.3	Slot 5	11
2.4.4	Slot 6	12
2.4.5	Slot 7	13
2.5	FID Slots	14
2.5.1	Slot 0	14
2.5.2	Slot 1	15
2.5.3	Slot 2	16
A	Summary	17
A.1	Status	17
A.2	Comments	17

1 Front

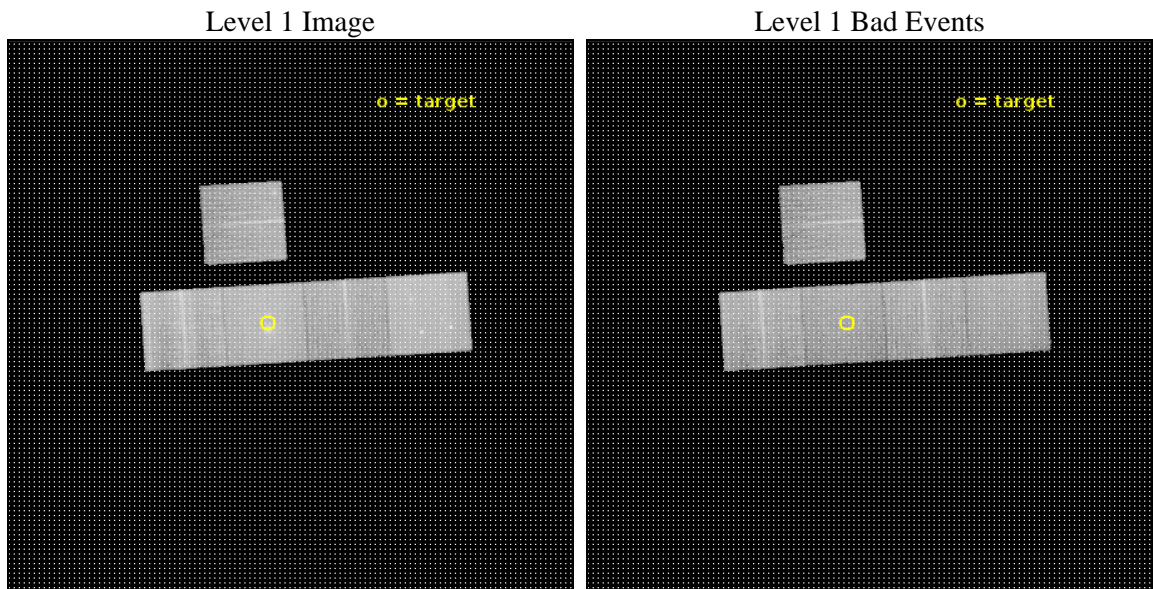
seq_num	801656	Sequence number
obs_id	19937	Observation id
title	Cavities, shocks and stripping in a high-velocity group-group merger: NGC 6338	Proposal title
observer	Ewan O'Sullivan	Principal investigator
object	NGC 6338	Source name
dtcycle	0	
cycle	P	events from which exps? Prim/Second/Both
ra_targ	258.844583	Observer's specified target RA [deg]
dec_targ	57.422139	Observer's specified target Dec [deg]
ra_nom	258.77538715764	Nominal RA [deg]
dec_nom	57.420418957595	Nominal Dec [deg]
roll_nom	176.21495348282	Nominal Roll [deg]
revision	1	Processing version of data
ontime	20053.900154352	Sum of GTIs [s]
livetime	19791.881185369	Livetime [s]
ontime3	20053.900154352	Sum of GTIs [s]
ontime5	20053.900154352	Sum of GTIs [s]
ontime6	20053.900154352	Sum of GTIs [s]
ontime7	20053.900154352	Sum of GTIs [s]
ontime8	20047.618193269	Sum of GTIs [s]
l2events	258631	Number of level 2 events



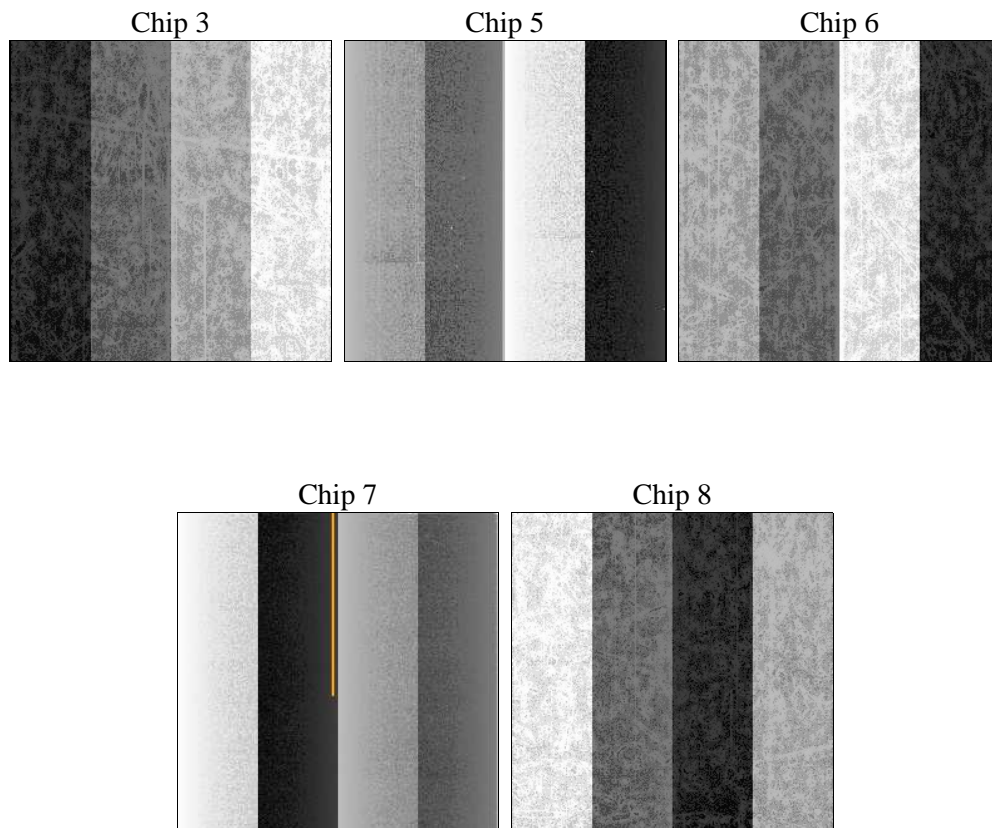
2 OBI

2.1 OBI

2.1.1 Images



2.1.2 Bias



2.1.3 Parameters

obi_num	0	Obi number	sched_exp_time	20000.000000	[s] Scheduled observation exposure time
ascdsver	10.5.4	Processing system revision	ontime	20053.900154352	Sum of GTIs [s]
caldsver	4.7.4	 	ontime3	20053.900154352	Sum of GTIs [s]
date	2017-06-08T13:47:03	Date and time of file creation	ontime5	20053.900154352	Sum of GTIs [s]
revision	1	Processing version of data	ontime6	20053.900154352	Sum of GTIs [s]
			ontime7	20053.900154352	Sum of GTIs [s]
			ontime8	20047.618193269	Sum of GTIs [s]
			l1events	924439	Number of level 1 events

2.1.4 Events

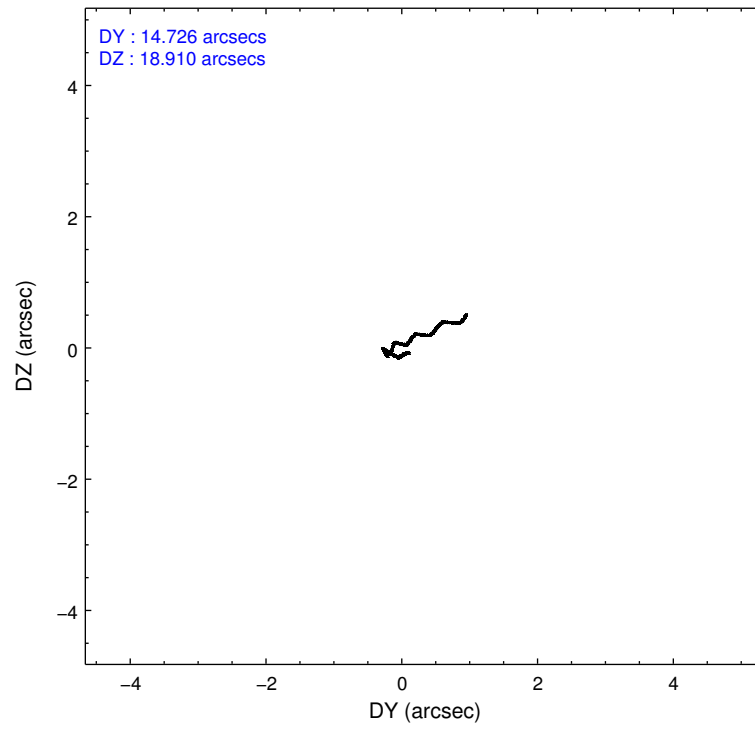
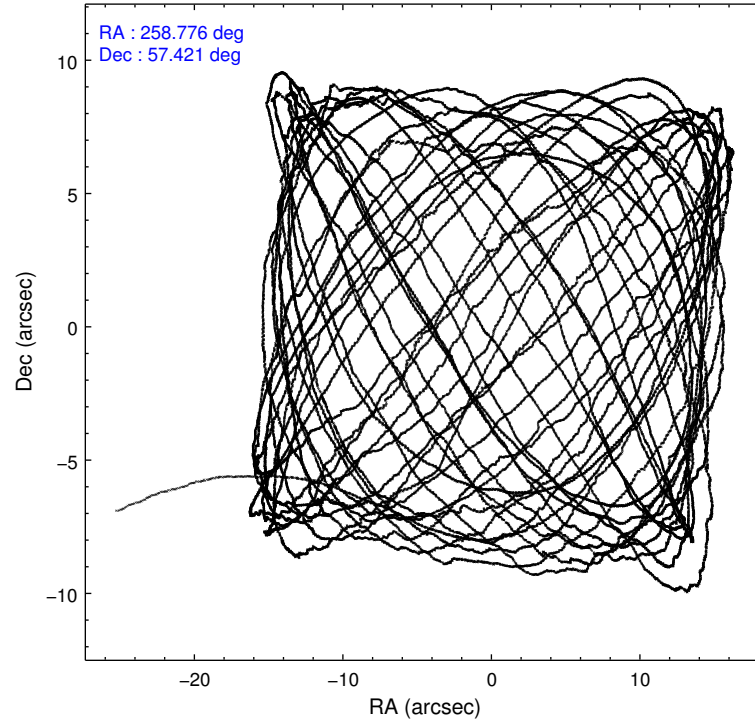
	ccd 3	ccd 5	ccd 6	ccd 7	ccd 8
level 1 events	139364	231719	148658	209560	195138
rejected events	122369	119902	130473	105322	140736
rejected %	87%	51%	87%	50%	72%

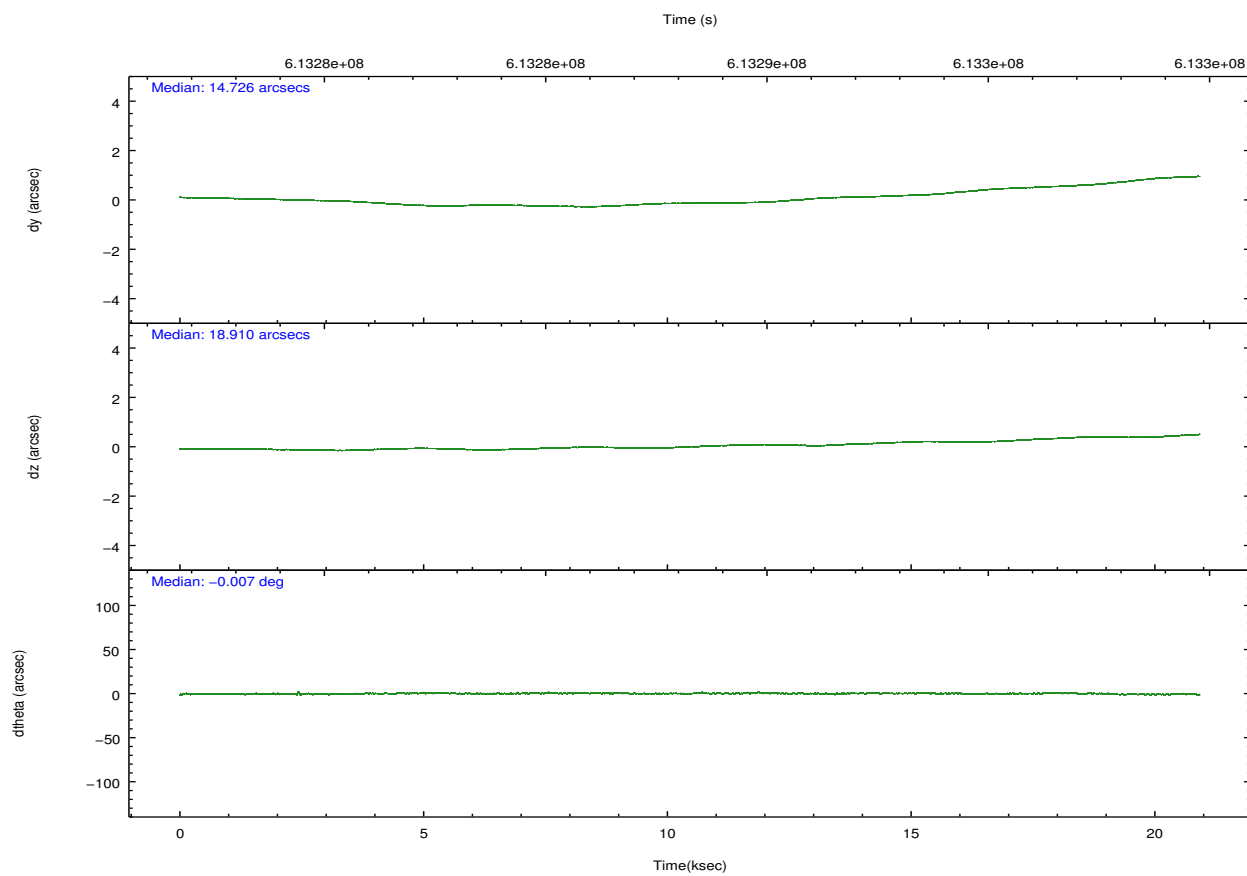
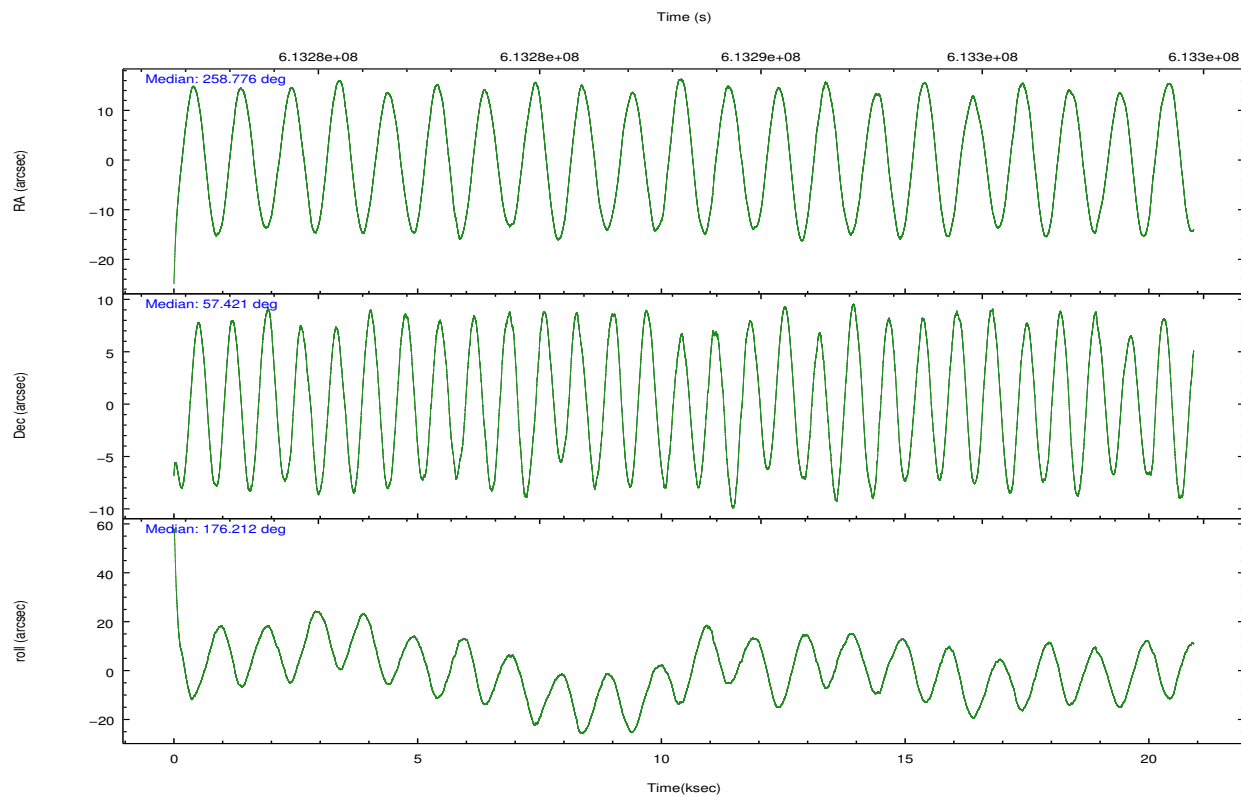
	ccd 3	ccd 5	ccd 6	ccd 7	ccd 8
grade 0 events	6871	8845	6942	13550	15810
	4%	3%	4%	6%	8%
grade 1 events	88	534	79	286	162
	0%	0%	0%	0%	0%
grade 2 events	3399	35261	4024	23420	13046
	2%	15%	2%	11%	6%
grade 3 events	1723	3718	1685	9335	5462
	1%	1%	1%	4%	2%
grade 4 events	1680	3530	1682	9153	5169
	1%	1%	1%	4%	2%
grade 5 events	6931	16917	7116	18947	10248
	4%	7%	4%	9%	5%
grade 6 events	3324	60479	3853	48794	14924
	2%	26%	2%	23%	7%
grade 7 events	115348	102435	123277	86075	130317
	82%	44%	82%	41%	66%

2.2 Compared Parameters

Parameter	Planned	Actual	Parameter	Planned	Actual
Instrument	ACIS	ACIS	Obspar format version number	7	7
Detector	ACIS-35678	ACIS-35678	Obspar file type	PREDICTED	ACTUAL
Grating	NONE	NONE	Obspar update status	NONE	UPDATED
Data mode	VFAINT	VFAINT	CCD I0 on	N	N
Observation mode	POINTING	POINTING	CCD I1 on	N	N
[deg] Pointing RA	258.820820	258.7753871576448	CCD I2 on	N	N
[deg] Pointing Dec	57.432877	57.4204189575952	CCD I3 on	O1	Y
[deg] Pointing Roll	176.020017	176.2149534828183	CCD S0 on	N	N
[mm] SIM focus pos	-0.684267	-0.6828225247311905	CCD S1 on	Y	Y
[mm] SIM defocus	0	0.001444936568705701	CCD S2 on	Y	Y
[mm] SIM translation stage pos	-190.132523	-190.1400660498719	CCD S3 on	Y	Y
[mm] SIM translation stage offset	0	0.00754346686406393	CCD S4 on	Y	Y
[s] Observation start time (MET)	613278722.184000	613276958.18109	CCD S5 on	N	N
Observation start date	2017-06-08T03:10:53	2017-06-08T02:42:38	Number of optional ACIS chips dropped	0	0
[s] Observation end time (MET)	613298722.184000	613299824.90742	On-chip summing requested	N	N
Observation end date	2017-06-08T08:44:13	2017-06-08T09:03:44	Subarray requested	NONE	NONE
Read mode	TIMED	TIMED	Alternating exposures requested	N	N
			[s] Primary exposure time	0.000000	3.1

2.3 Aspect



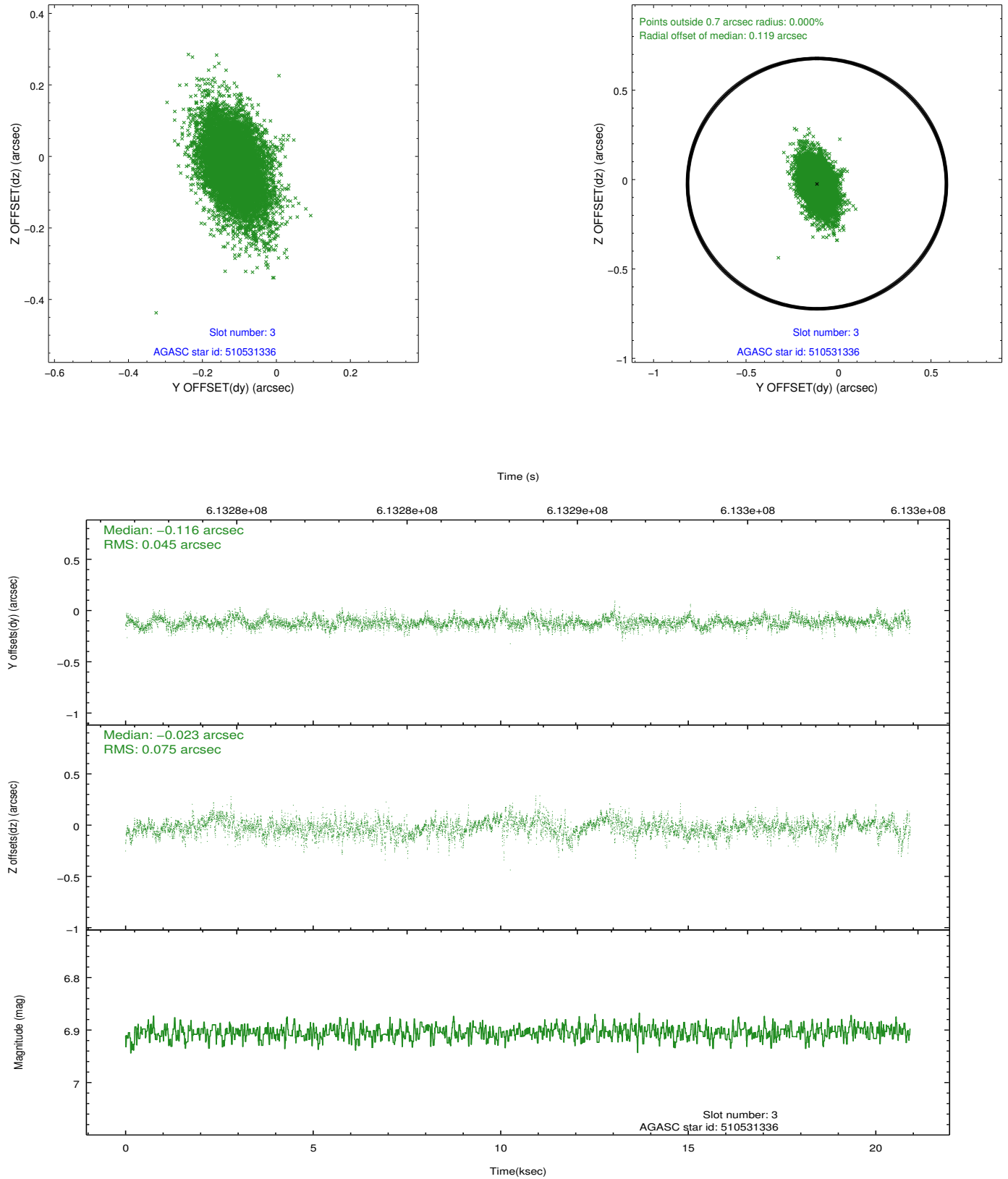


Slot Statistics

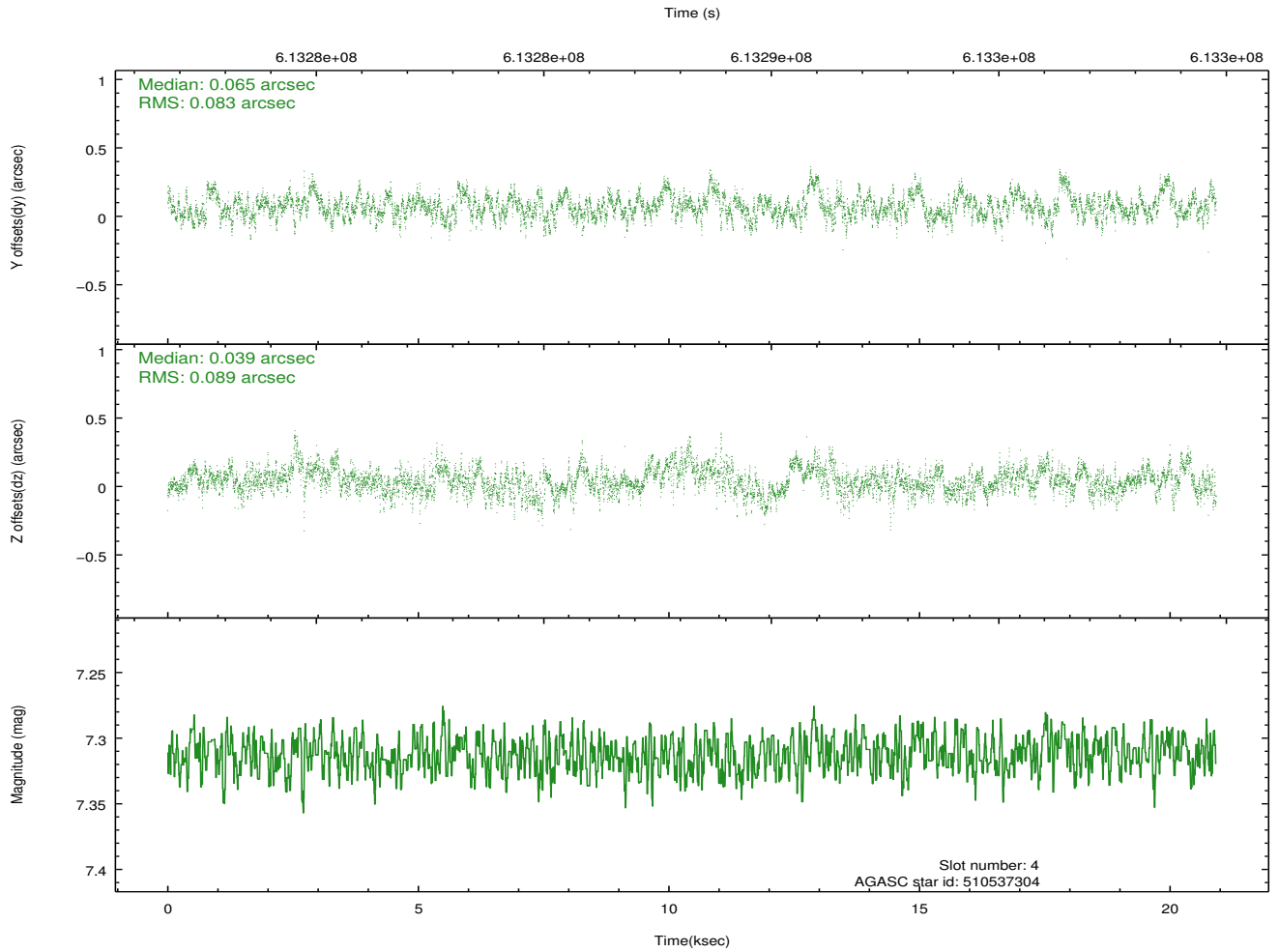
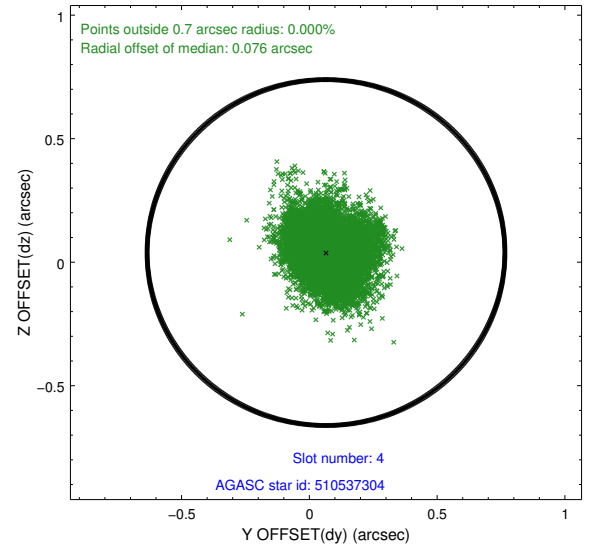
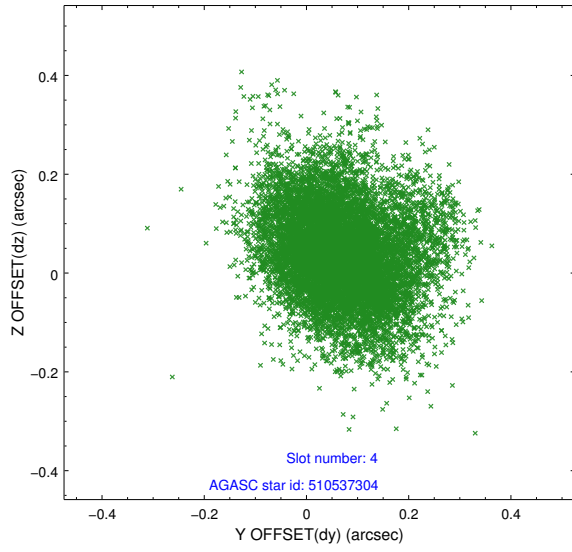
slot	status	used	id	mag	n_pts	med_dy	med_dz	dr1	dr2	ra	dec	mean_y	mean_z
0	FID		ACIS-S-1	7.06	5103	0.027	-0.021	0.012	0.021	0.000000	0.000000	928.32	-1736.09
1	FID		ACIS-S-4	7.08	5103	0.381	0.005	0.010	0.019	0.000000	0.000000	2146.12	167.96
2	FID		ACIS-S-5	7.06	5103	-0.436	0.027	0.009	0.017	0.000000	0.000000	-1820.85	161.64
3	GUIDE	used	510531336	6.90	10206	-0.116	-0.023	0.087	0.161	258.217938	57.862631	1259.93	-1468.03
4	GUIDE	used	510537304	7.31	10203	0.065	0.039	0.128	0.213	257.977845	57.967610	1741.44	-1819.36
5	GUIDE	used	510537952	9.38	10192	0.278	-0.306	0.132	0.220	259.803735	57.190117	-1971.49	724.68
6	GUIDE	used	510536032	9.24	10195	-0.460	-0.017	0.140	0.230	258.787877	57.540840	90.31	-382.96
7	GUIDE	used	510663960	8.85	10194	0.230	0.308	0.139	0.228	260.091174	57.974176	-2283.14	-2133.72

2.4 Star Slots

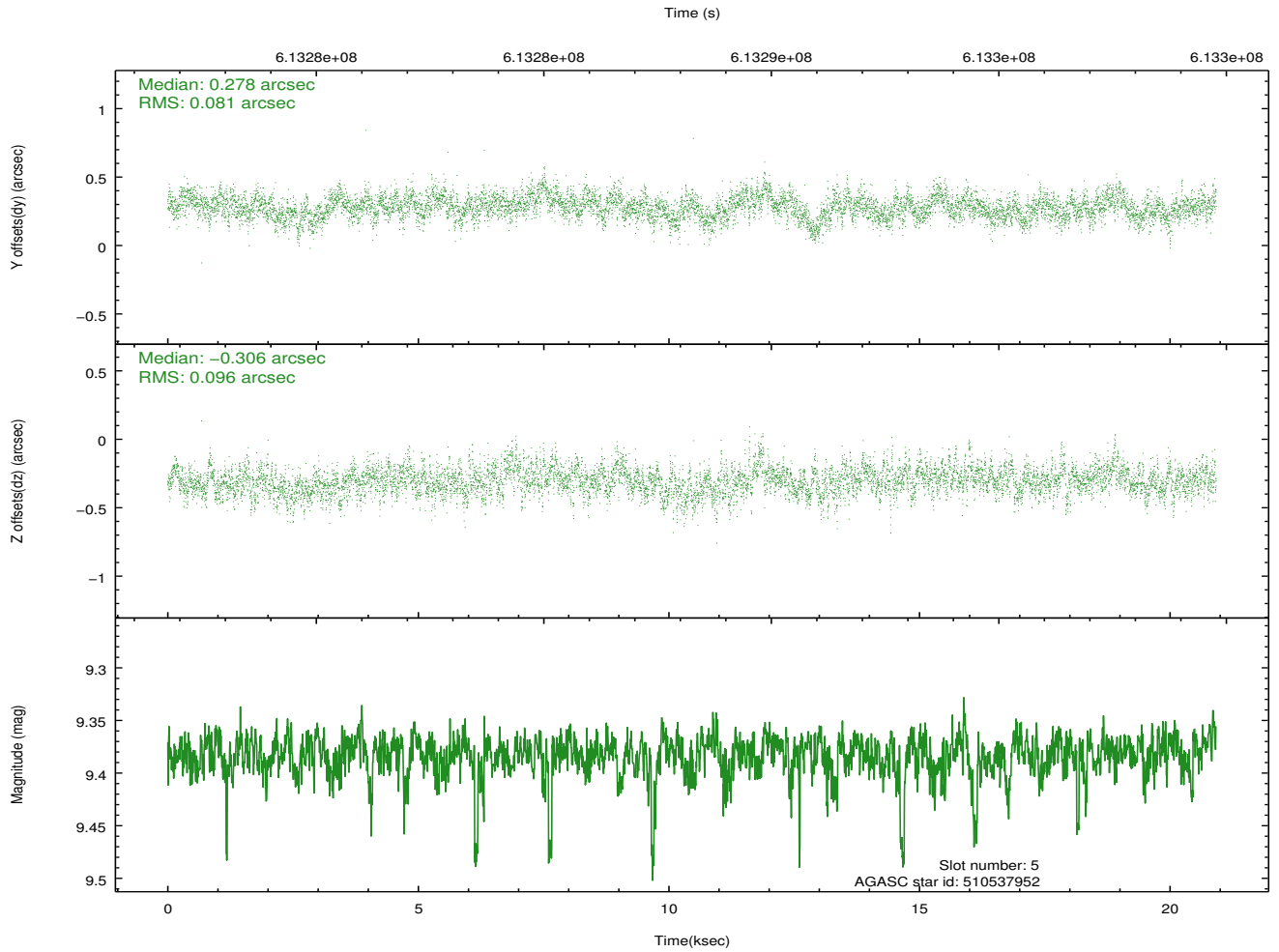
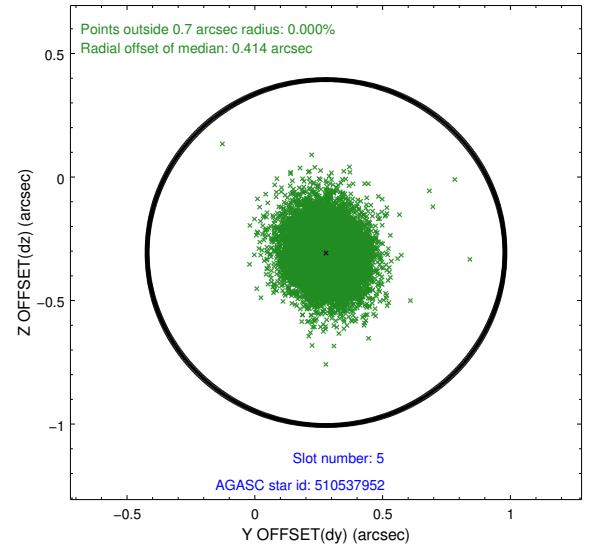
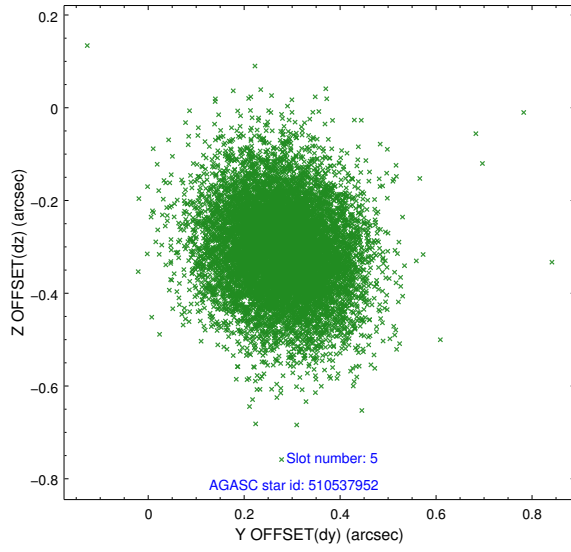
2.4.1 Slot 3



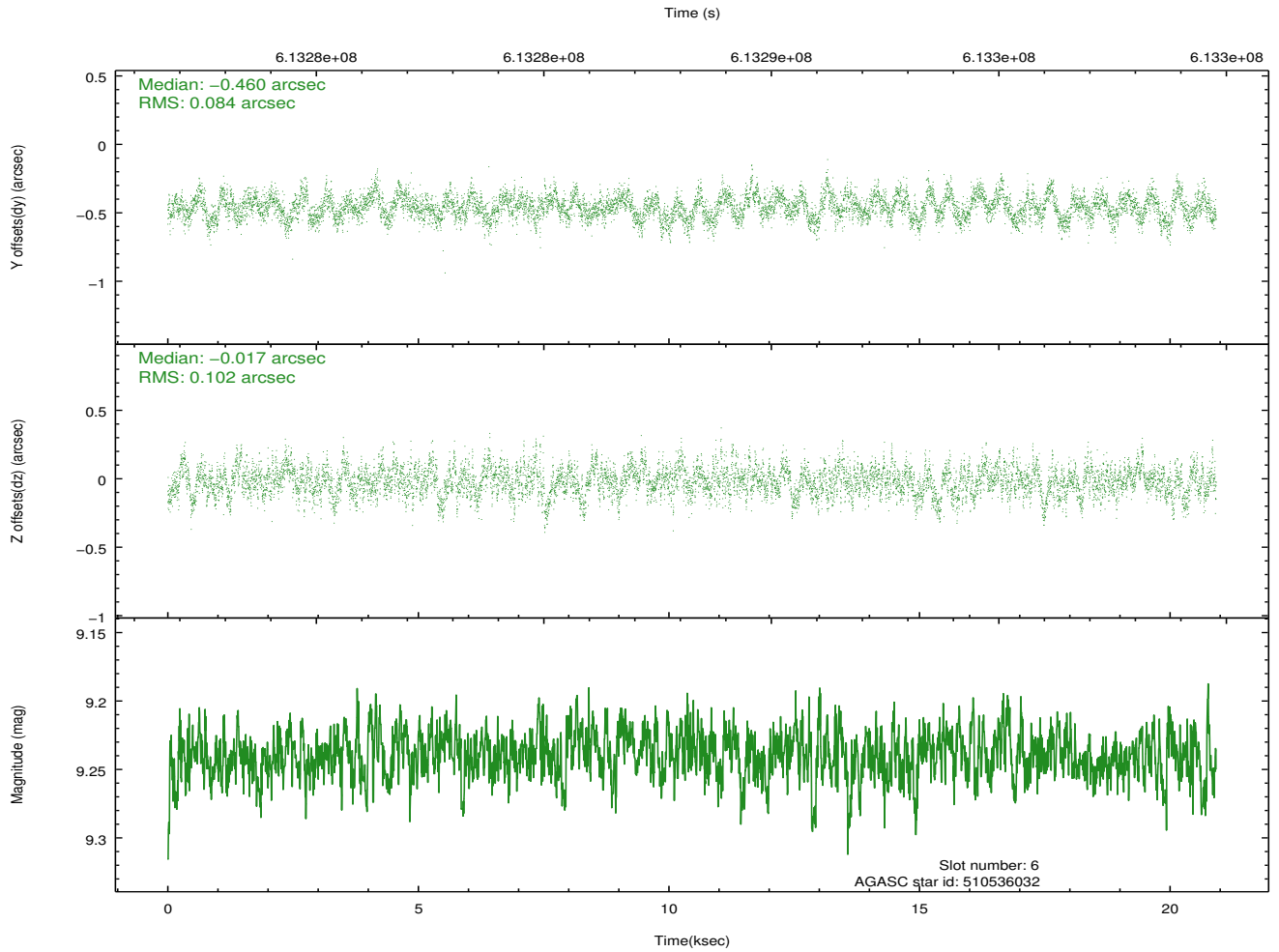
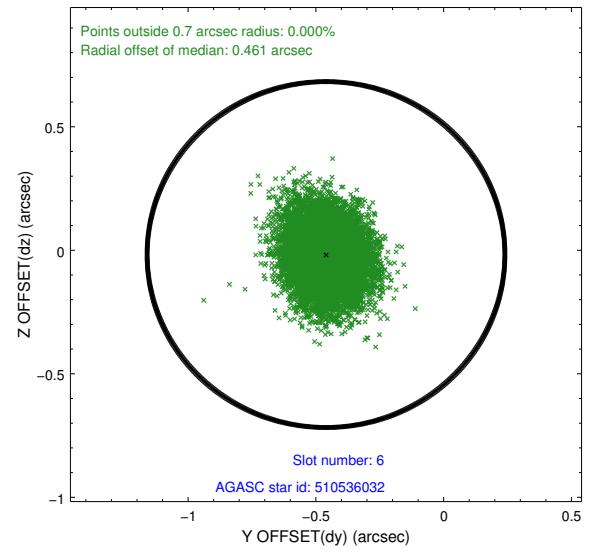
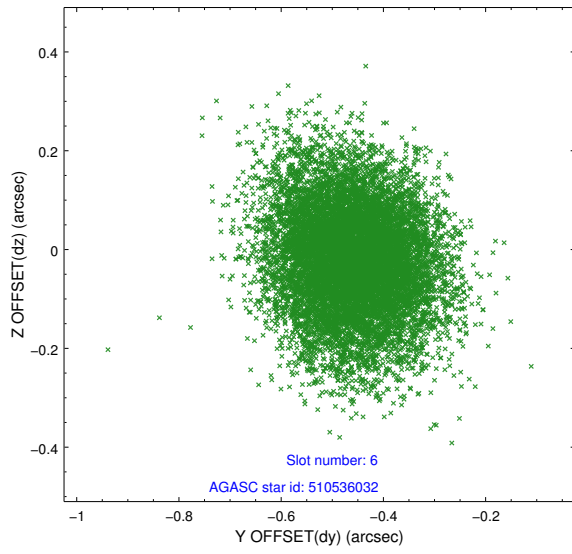
2.4.2 Slot 4



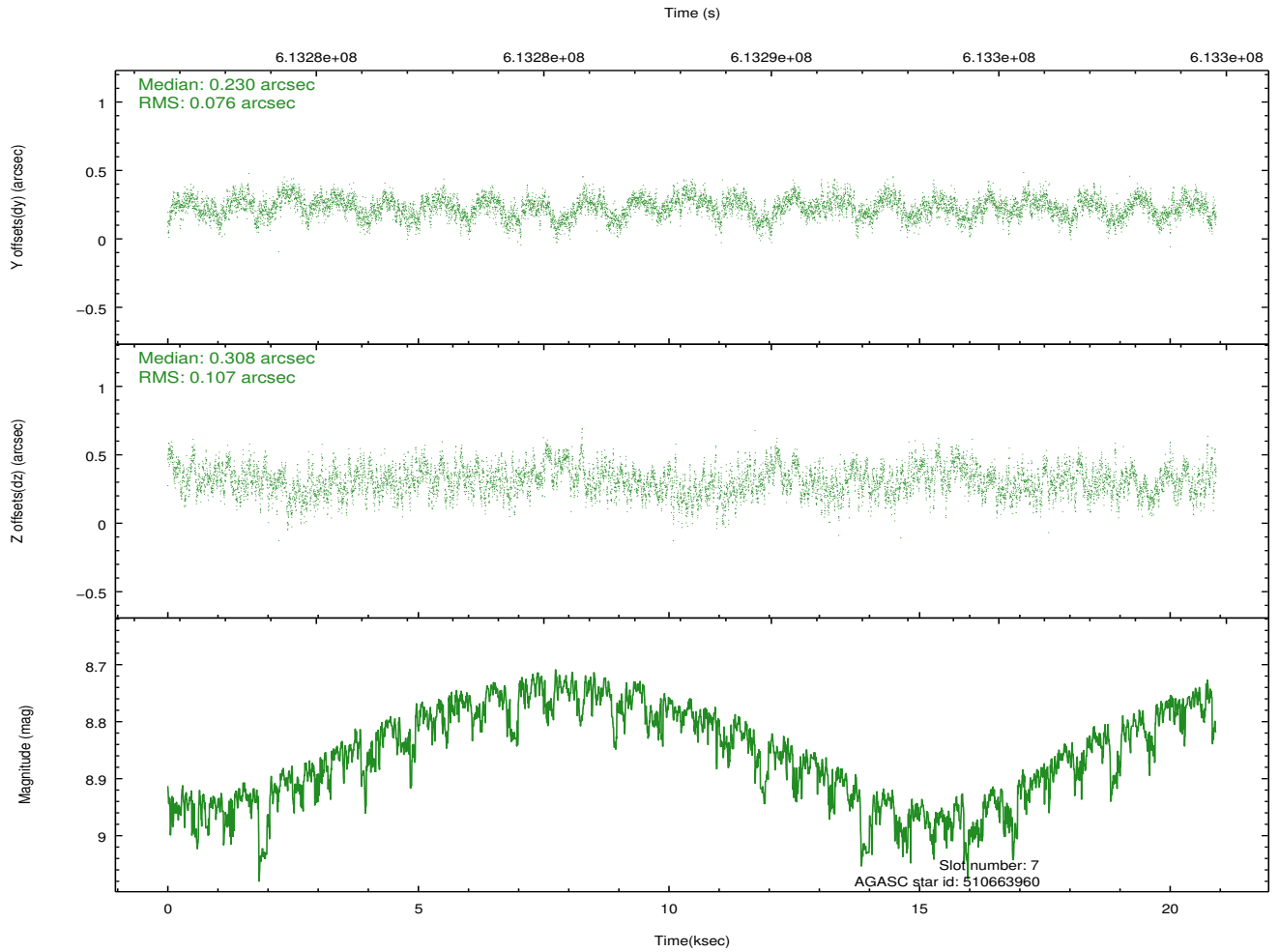
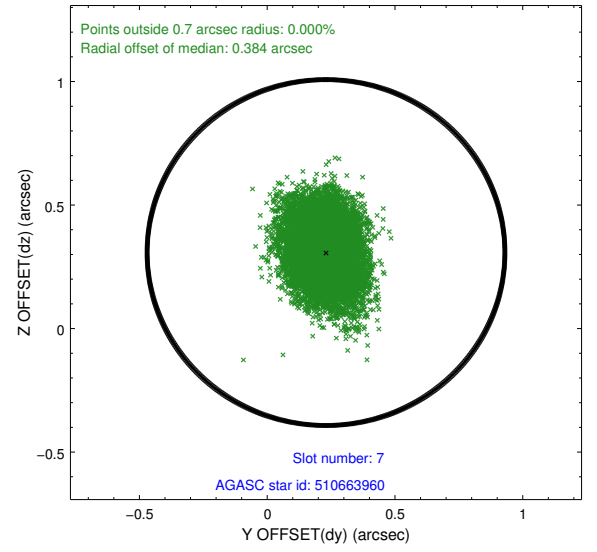
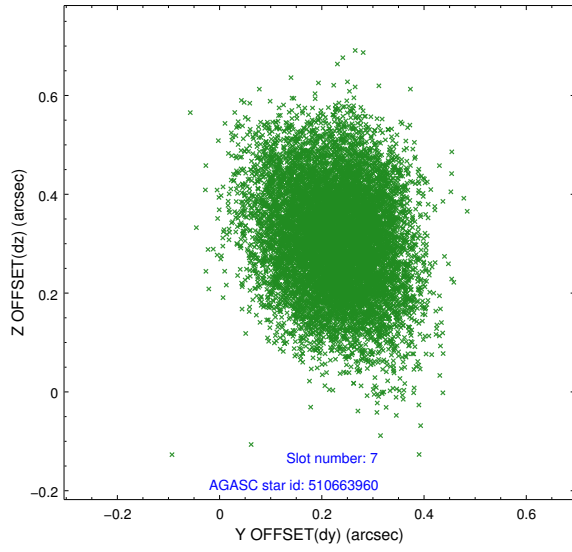
2.4.3 Slot 5



2.4.4 Slot 6

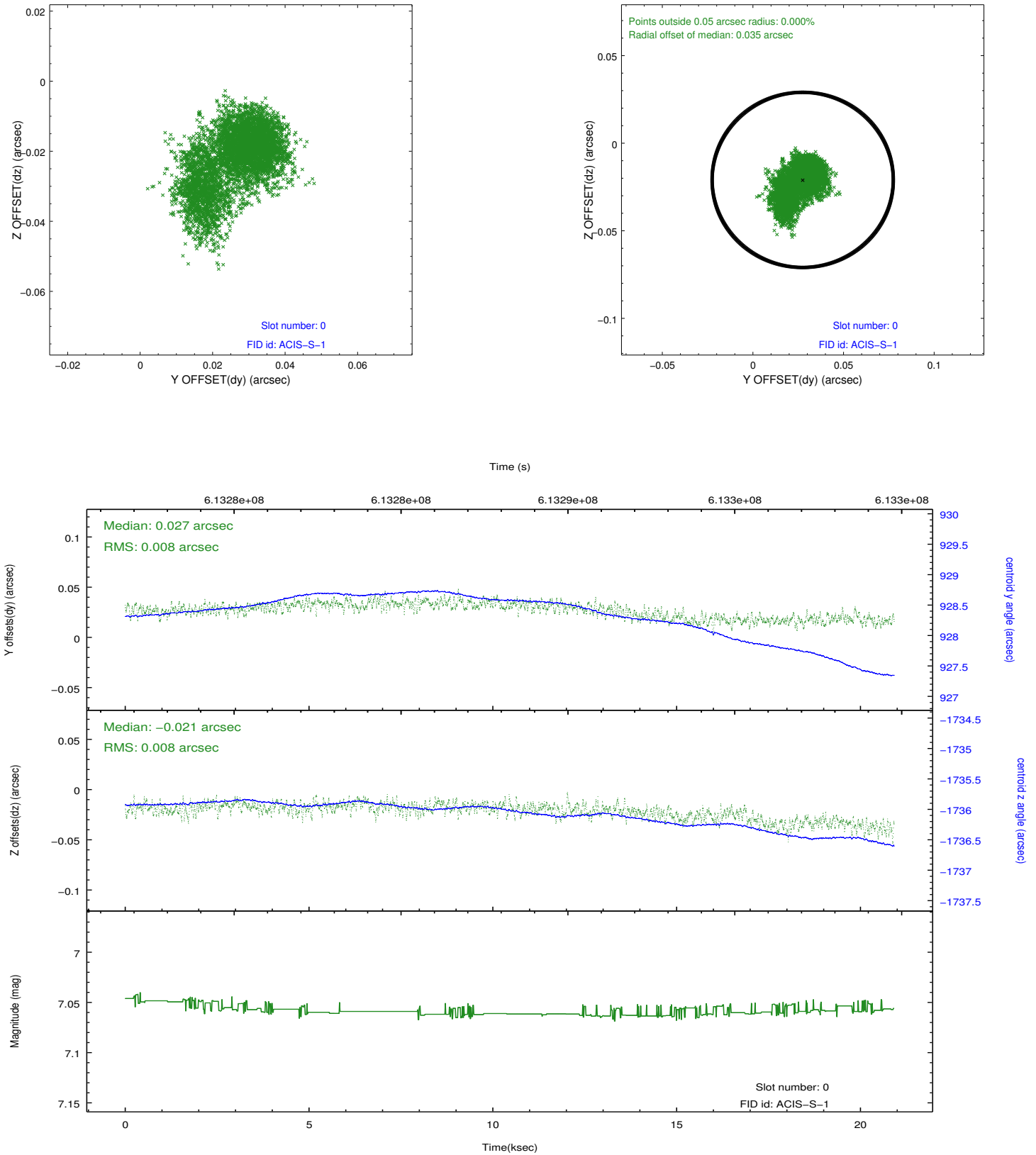


2.4.5 Slot 7

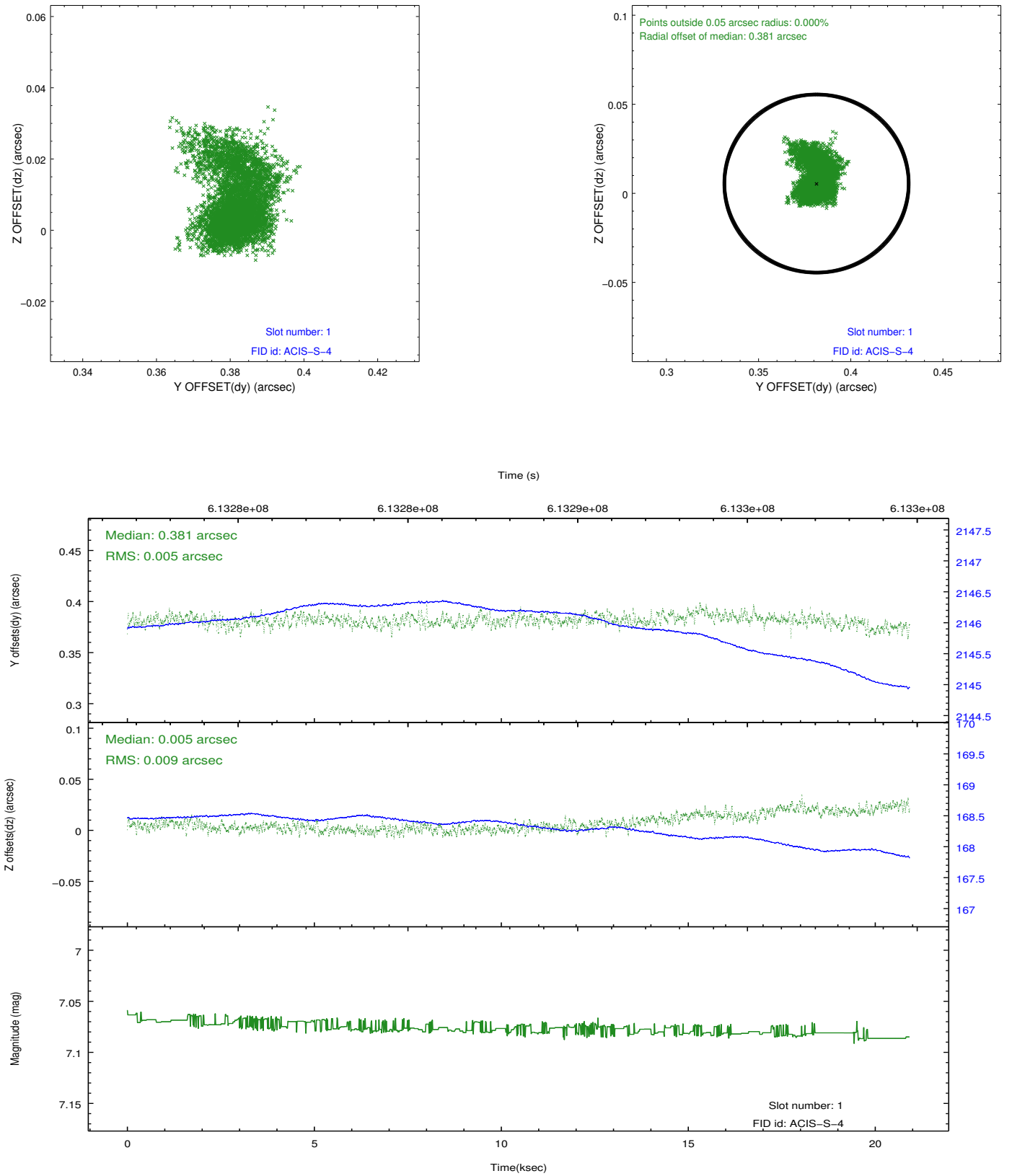


2.5 FID Slots

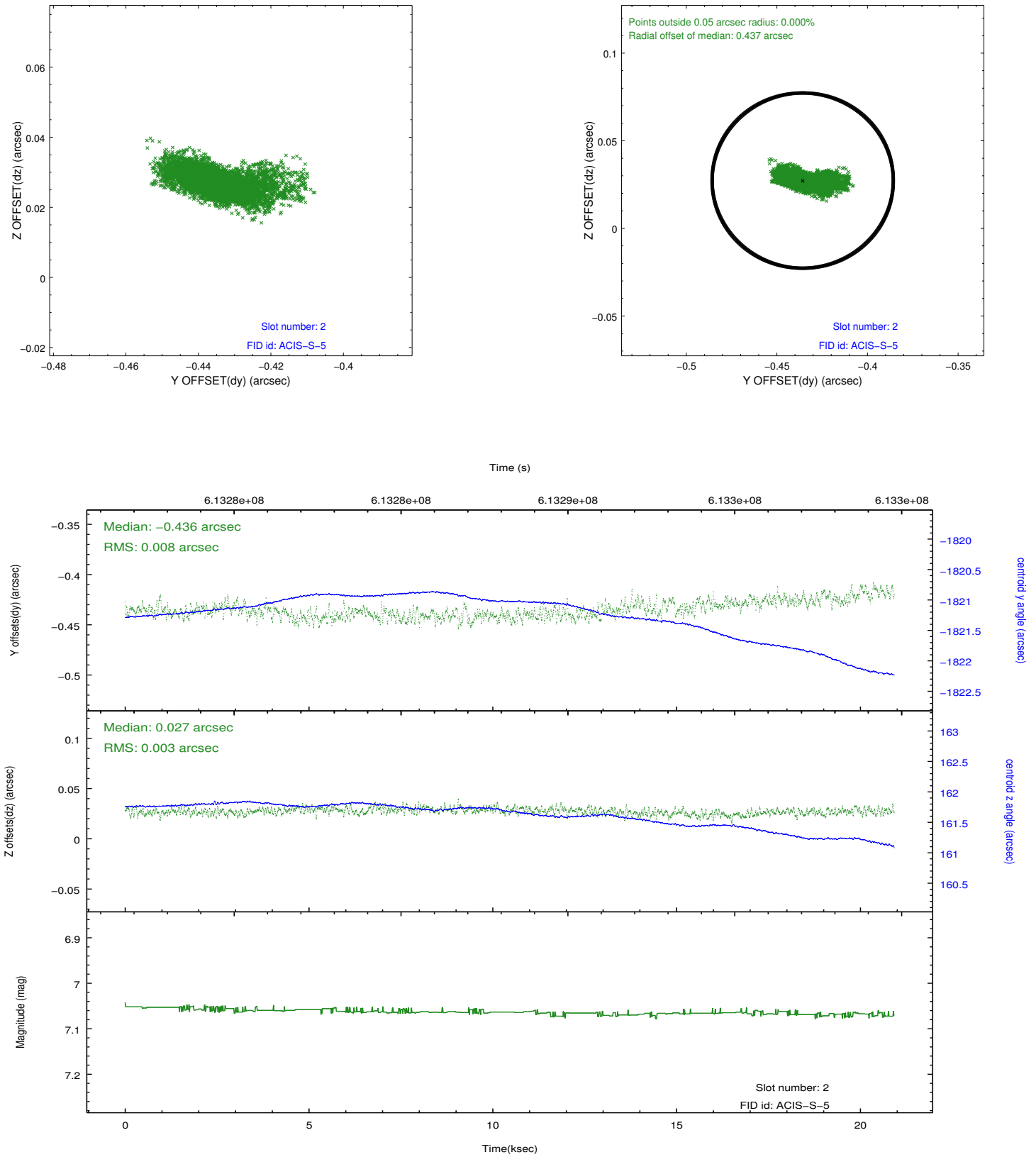
2.5.1 Slot 0



2.5.2 Slot 1



2.5.3 Slot 2



A Summary

A.1 Status

V&V Scientist	Jen Lauer
V&V Date (YYYY-MM-DD)	2017.06.08
V&V Edition	1
V&V Disposition and Status	OK
V&V Charge Time	20.053900154352

A.2 Comments