

V&V Reference Report

L2 ASCDS Version : 10.5.2

Observation 20021 - L2 Version 1
Chandra X-Ray Center

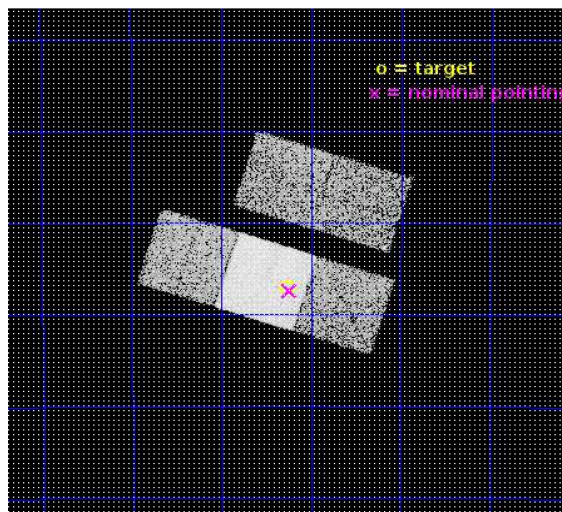
L2 Processing Date : Mar 16 2017

Contents

1	Front	2
2	OBI	3
2.1	OBI	3
2.1.1	Images	3
2.1.2	Bias	3
2.1.3	Parameters	4
2.1.4	Events	4
2.2	Compared Parameters	5
2.3	Aspect	6
2.4	Star Slots	9
2.4.1	Slot 3	9
2.4.2	Slot 4	10
2.4.3	Slot 5	11
2.4.4	Slot 6	12
2.4.5	Slot 7	13
2.5	FID Slots	14
2.5.1	Slot 0	14
2.5.2	Slot 1	15
2.5.3	Slot 2	16
A	Summary	17
A.1	Status	17
A.2	Comments	17

1 Front

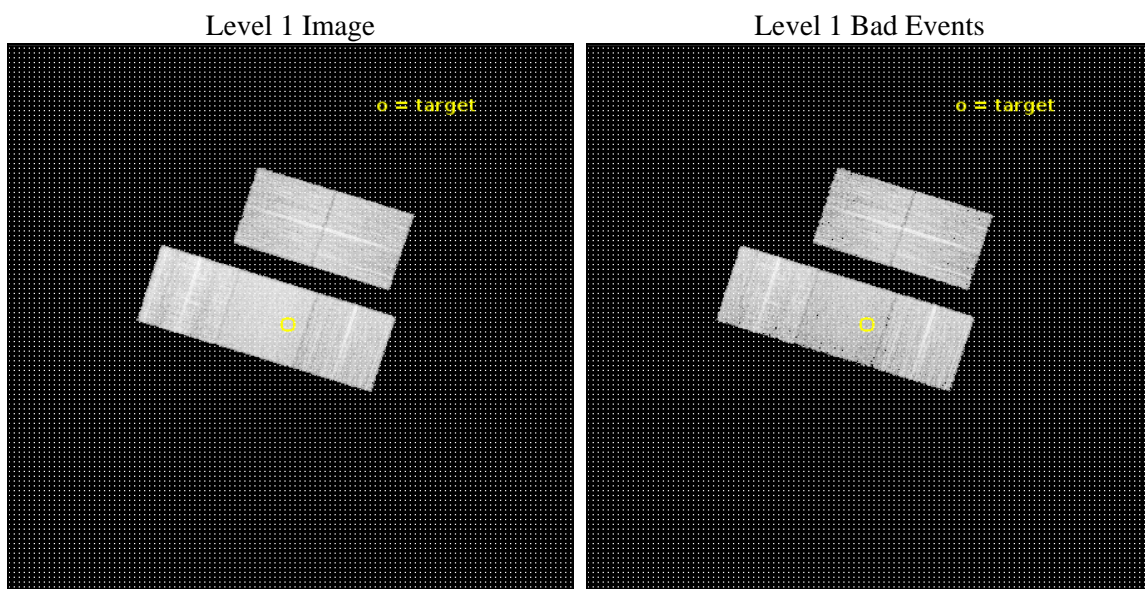
seq_num	703465	Sequence number
obs_id	20021	Observation id
title	X-ray flux of the Narrow-Line Seyfert 1 galaxy WPVS 007 during a high UV flux state	Proposal title
observer	Dirk Grupe	Principal investigator
object	WPVS 007	Source name
dtcycle	0	
cycle	P	events from which exps? Prim/Second/Both
ra_targ	9.815833	Observer's specified target RA [deg]
dec_targ	-51.284167	Observer's specified target Dec [deg]
ra_nom	9.8108391255803	Nominal RA [deg]
dec_nom	-51.290165922397	Nominal Dec [deg]
roll_nom	197.67527911083	Nominal Roll [deg]
revision	1	Processing version of data
ontime	10049.711672306	Sum of GTIs [s]
livetime	9918.4047908173	Livetime [s]
ontime2	10046.406542063	Sum of GTIs [s]
ontime3	10049.629592299	Sum of GTIs [s]
ontime6	10046.529662132	Sum of GTIs [s]
ontime7	10049.711672306	Sum of GTIs [s]
ontime8	10049.588552356	Sum of GTIs [s]
l2events	68906	Number of level 2 events



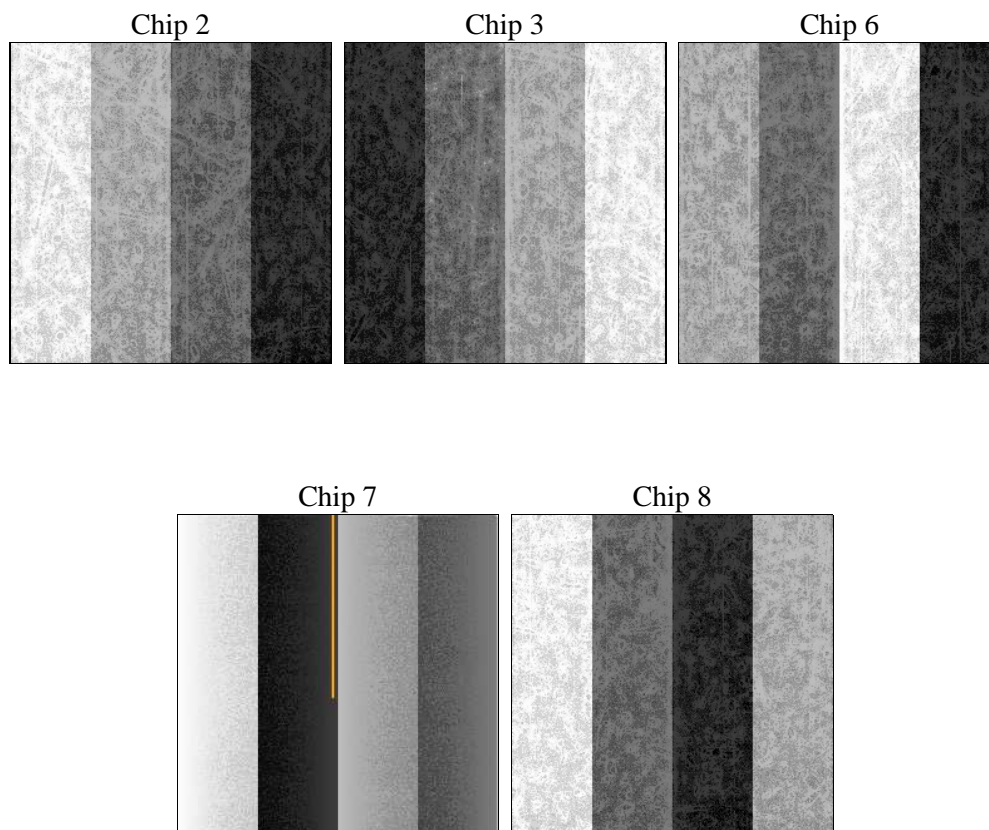
2 OBI

2.1 OBI

2.1.1 Images



2.1.2 Bias



2.1.3 Parameters

obi_num	1	Obi number	sched_exp_time	10000.000000	[s] Scheduled observation exposure time
ascdsver	10.5.2	Processing system revision	ontime	10049.711672306	Sum of GTIs [s]
caldsver	4.7.3	 	ontime2	10046.406542063	Sum of GTIs [s]
date	2017-03-16T22:53:05	Date and time of file creation	ontime3	10049.629592299	Sum of GTIs [s]
revision	1	Processing version of data	ontime6	10046.529662132	Sum of GTIs [s]
			ontime7	10049.711672306	Sum of GTIs [s]
			ontime8	10049.588552356	Sum of GTIs [s]
			l1events	410172	Number of level 1 events

2.1.4 Events

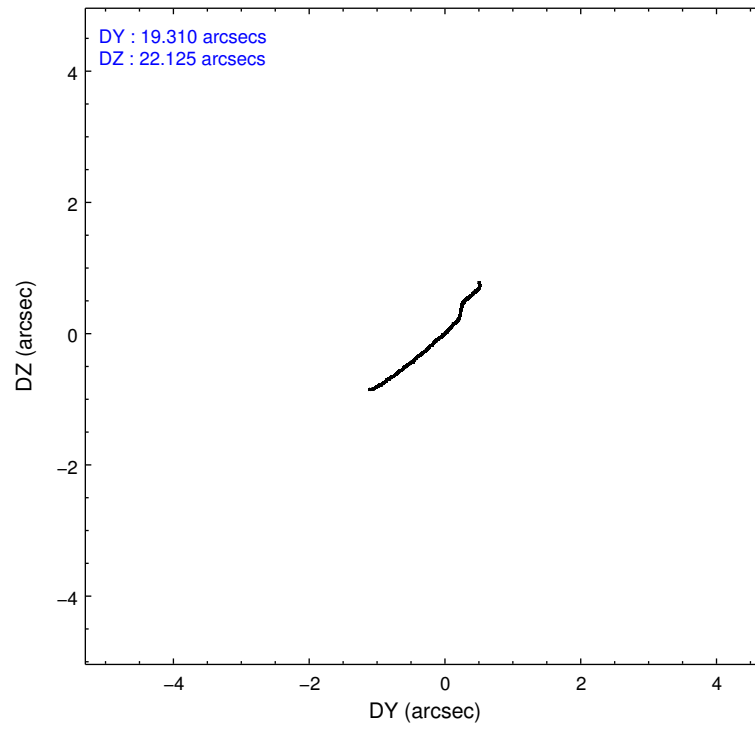
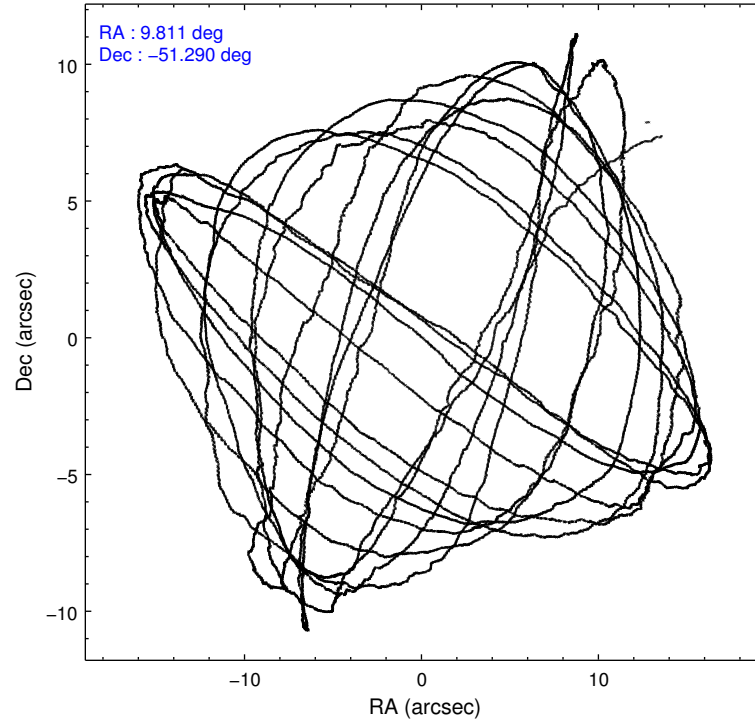
	ccd 2	ccd 3	ccd 6	ccd 7	ccd 8
level 1 events	72129	70745	73392	93712	100194
rejected events	64436	63009	65230	52940	73100
rejected %	89%	89%	88%	56%	72%

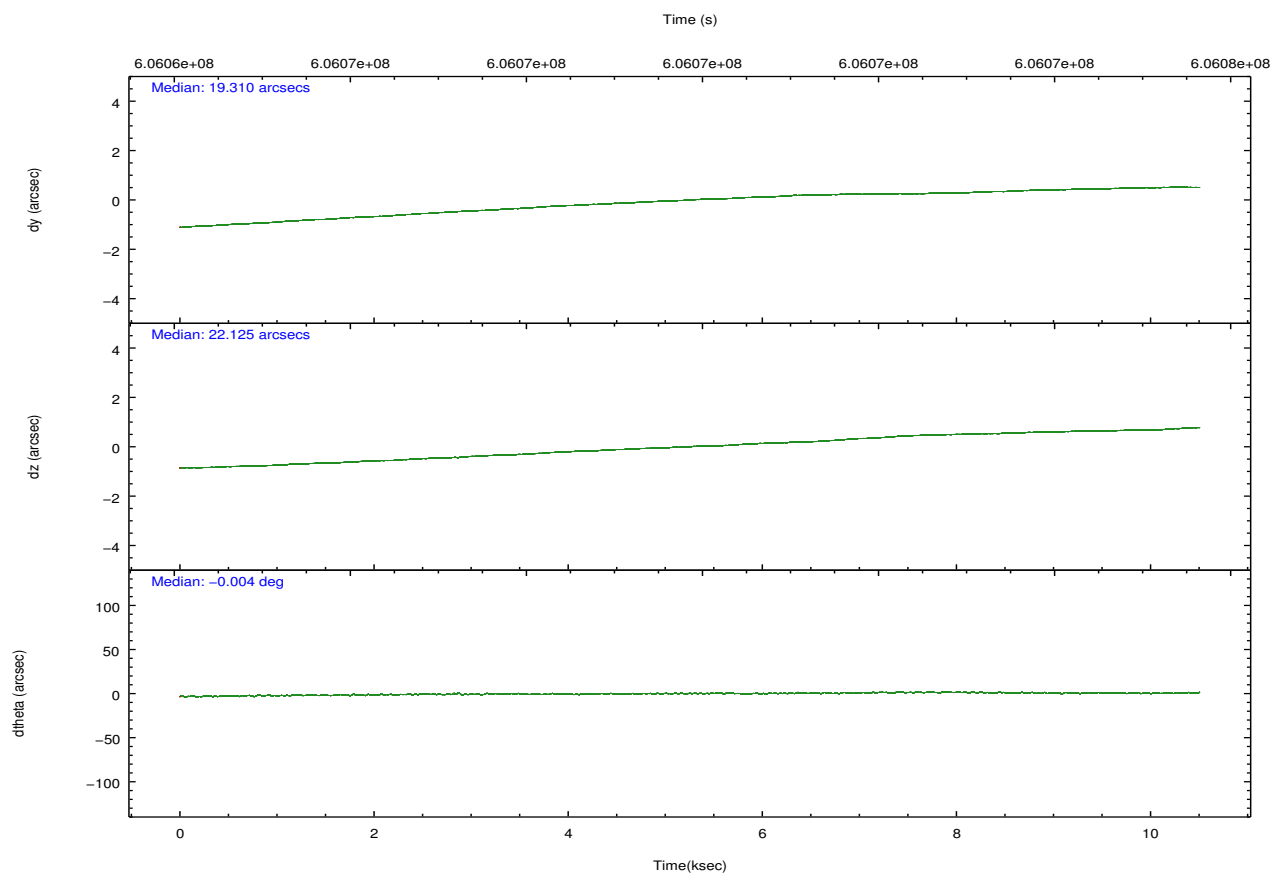
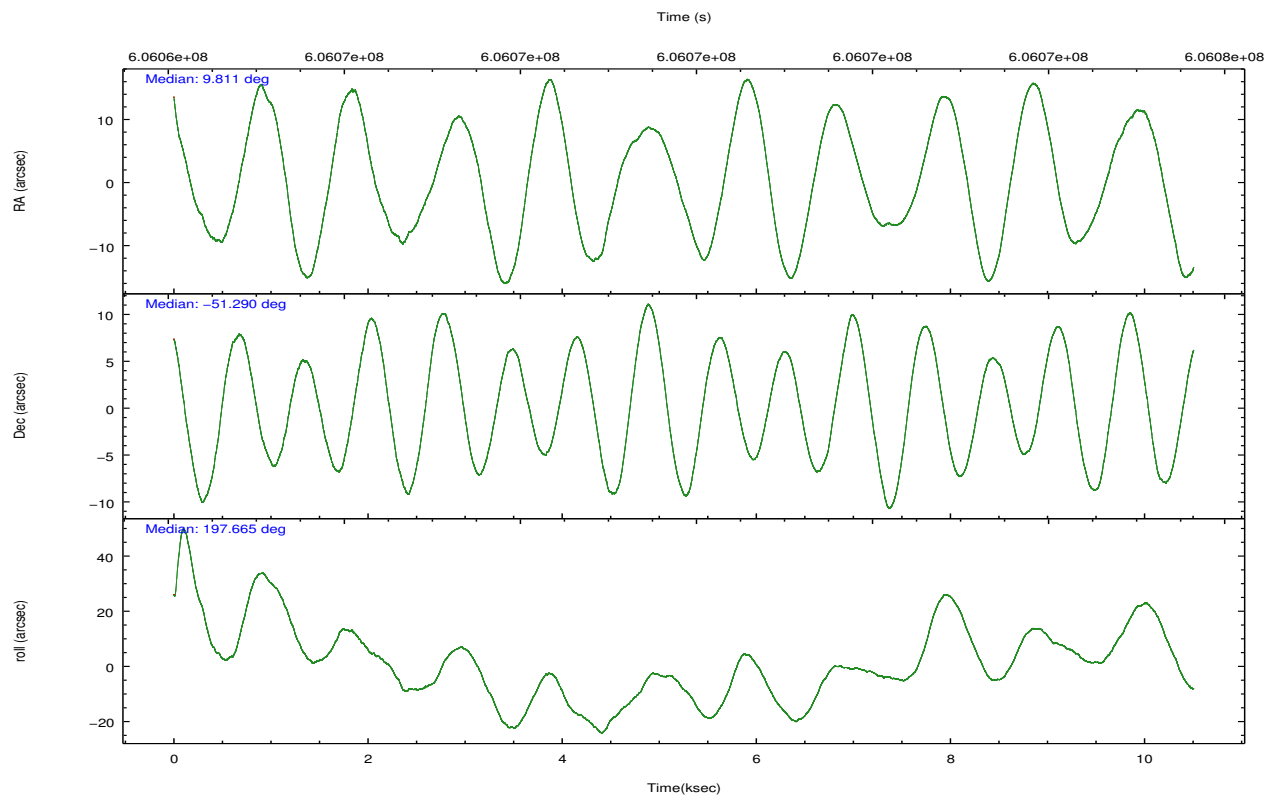
	ccd 2	ccd 3	ccd 6	ccd 7	ccd 8
grade 0 events	2818	2834	2723	3530	7835
	3%	4%	3%	3%	7%
grade 1 events	34	47	32	122	90
	0%	0%	0%	0%	0%
grade 2 events	1933	1672	1933	8600	6673
	2%	2%	2%	9%	6%
grade 3 events	754	818	784	3313	2750
	1%	1%	1%	3%	2%
grade 4 events	802	812	796	3268	2503
	1%	1%	1%	3%	2%
grade 5 events	2757	3391	3509	9581	5320
	3%	4%	4%	10%	5%
grade 6 events	1396	1613	1930	22082	7339
	1%	2%	2%	23%	7%
grade 7 events	61635	59558	61685	43216	67684
	85%	84%	84%	46%	67%

2.2 Compared Parameters

Parameter	Planned	Actual	Parameter	Planned	Actual
Instrument	ACIS	ACIS	Obspar format version number	7	7
Detector	ACIS-23678	ACIS-23678	Obspar file type	PREDICTED	ACTUAL
Grating	NONE	NONE	Obspar update status	NONE	UPDATED
Data mode	VFAINT	VFAINT	CCD I0 on	N	N
Observation mode	POINTING	POINTING	CCD I1 on	N	N
[deg] Pointing RA	9.839979	9.810839125580253	CCD I2 on	O1	Y
[deg] Pointing Dec	-51.269604	-51.29016592239738	CCD I3 on	O2	Y
[deg] Pointing Roll	197.541419	197.6752791108322	CCD S0 on	N	N
[mm] SIM focus pos	-0.684267	-0.6828225247311905	CCD S1 on	N	N
[mm] SIM defocus	0	0.001444936568705701	CCD S2 on	Y	Y
[mm] SIM translation stage pos	-190.132523	-190.1400660498719	CCD S3 on	Y	Y
[mm] SIM translation stage offset	0	0.00754346686406393	CCD S4 on	Y	Y
[s] Observation start time (MET)	606065109.184000	606063955.88696	CCD S5 on	N	N
Observation start date	2017-03-16T15:24:00	2017-03-16T15:05:55	Number of optional ACIS chips dropped	0	0
[s] Observation end time (MET)	606075109.184000	606076151.85017	On-chip summing requested	N	N
Observation end date	2017-03-16T18:10:40	2017-03-16T18:29:11	Subarray requested	NONE	NONE
Read mode	TIMED	TIMED	Alternating exposures requested	N	N
			[s] Primary exposure time	0.000000	3.1

2.3 Aspect



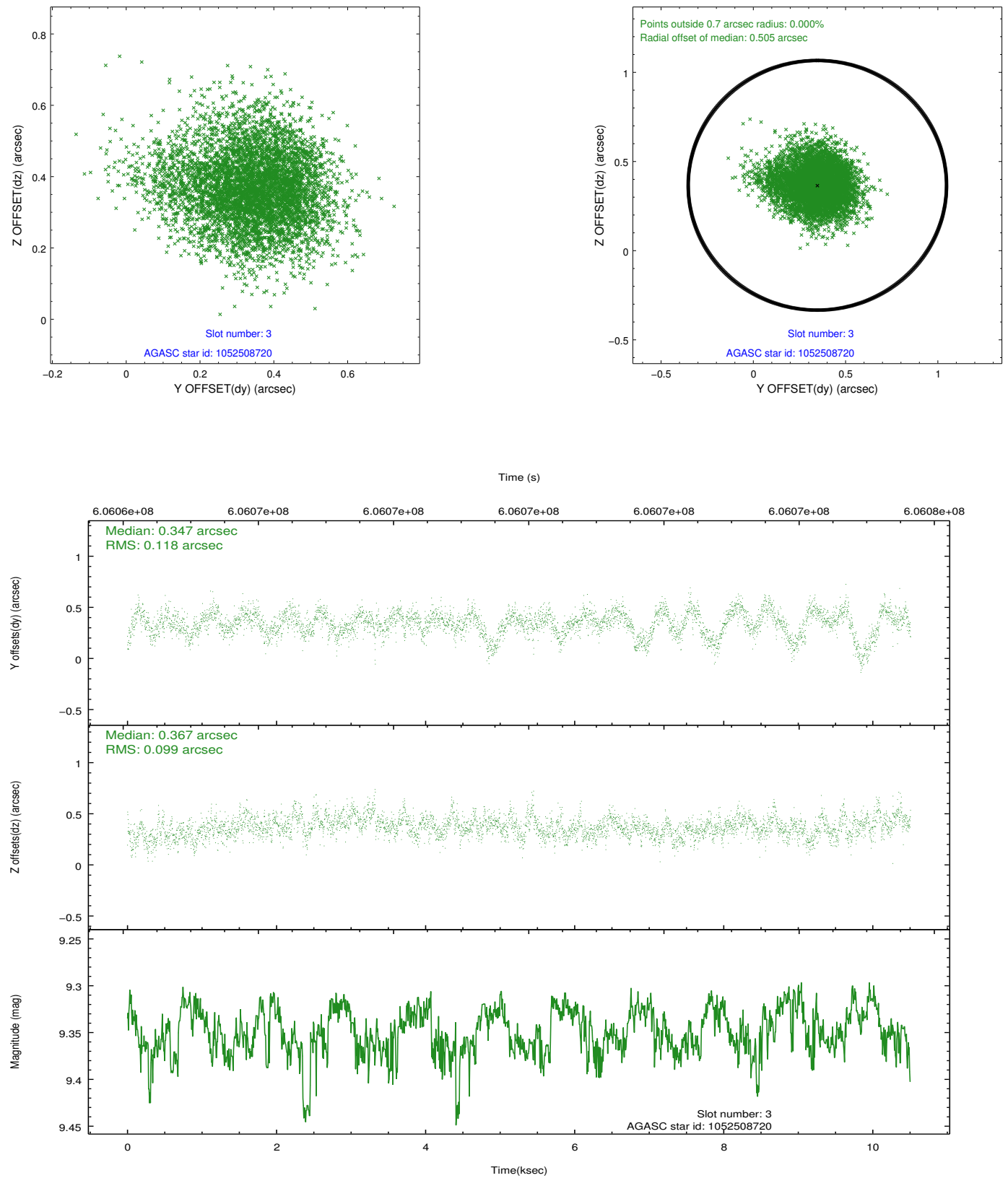


Slot Statistics

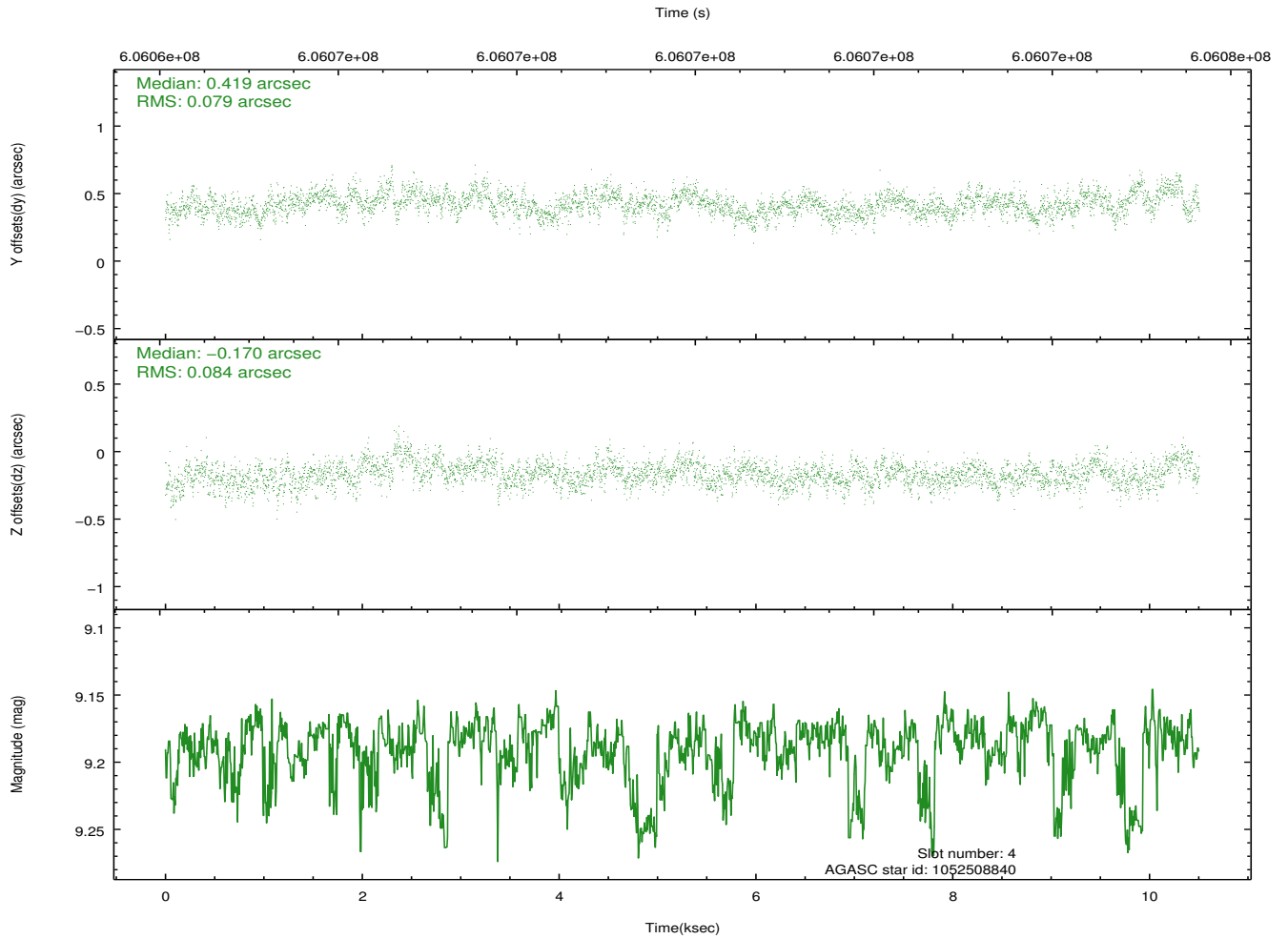
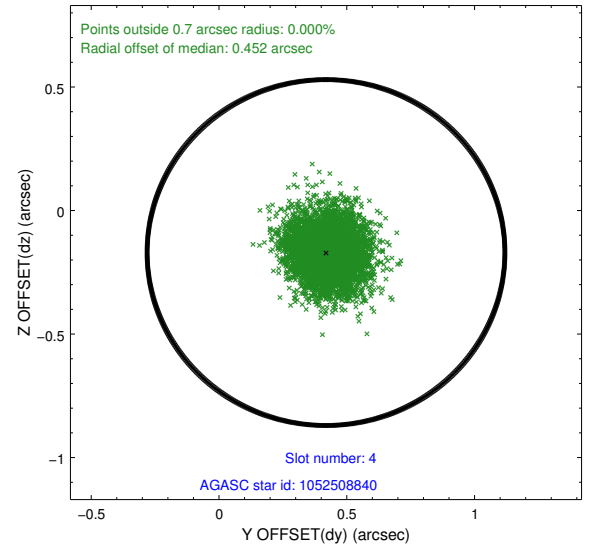
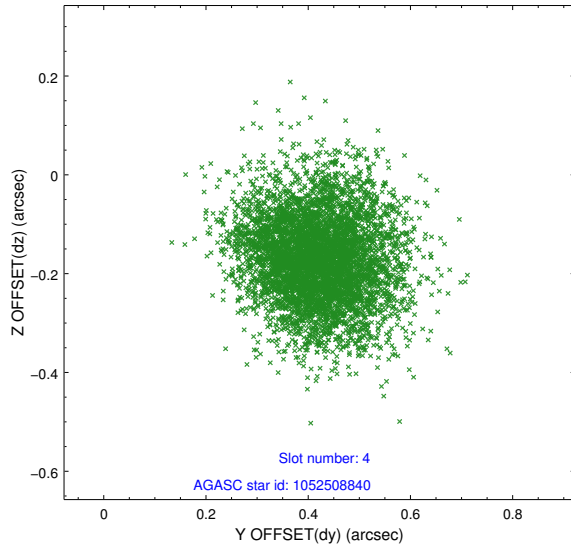
slot	status	used	id	mag	n_pts	med_dy	med_dz	dr1	dr2	ra	dec	mean_y	mean_z
0	FID		ACIS-S-2	6.91	2563	-0.226	-0.131	0.019	0.034	0.000000	0.000000	-772.49	-1743.81
1	FID		ACIS-S-4	7.02	2563	0.497	0.145	0.013	0.021	0.000000	0.000000	2141.27	164.42
2	FID		ACIS-S-5	7.02	2562	-0.305	-0.006	0.011	0.016	0.000000	0.000000	-1824.78	158.51
3	GUIDE	used	1052508720	9.35	5116	0.347	0.367	0.163	0.268	10.891663	-51.295828	-2223.47	820.03
4	GUIDE	used	1052508840	9.19	5122	0.419	-0.170	0.122	0.200	10.903677	-51.613746	-1889.26	1914.68
5	GUIDE	used	1052511336	8.38	5123	-1.017	0.084	0.126	0.205	10.026754	-51.744882	117.23	1758.22
6	GUIDE	used	1052516296	9.49	5123	0.162	-0.363	0.179	0.282	9.569819	-51.431221	753.98	374.21
7	GUIDE	used	1052516688	9.46	5108	0.088	0.081	0.212	0.330	9.618699	-51.057391	247.81	-878.12

2.4 Star Slots

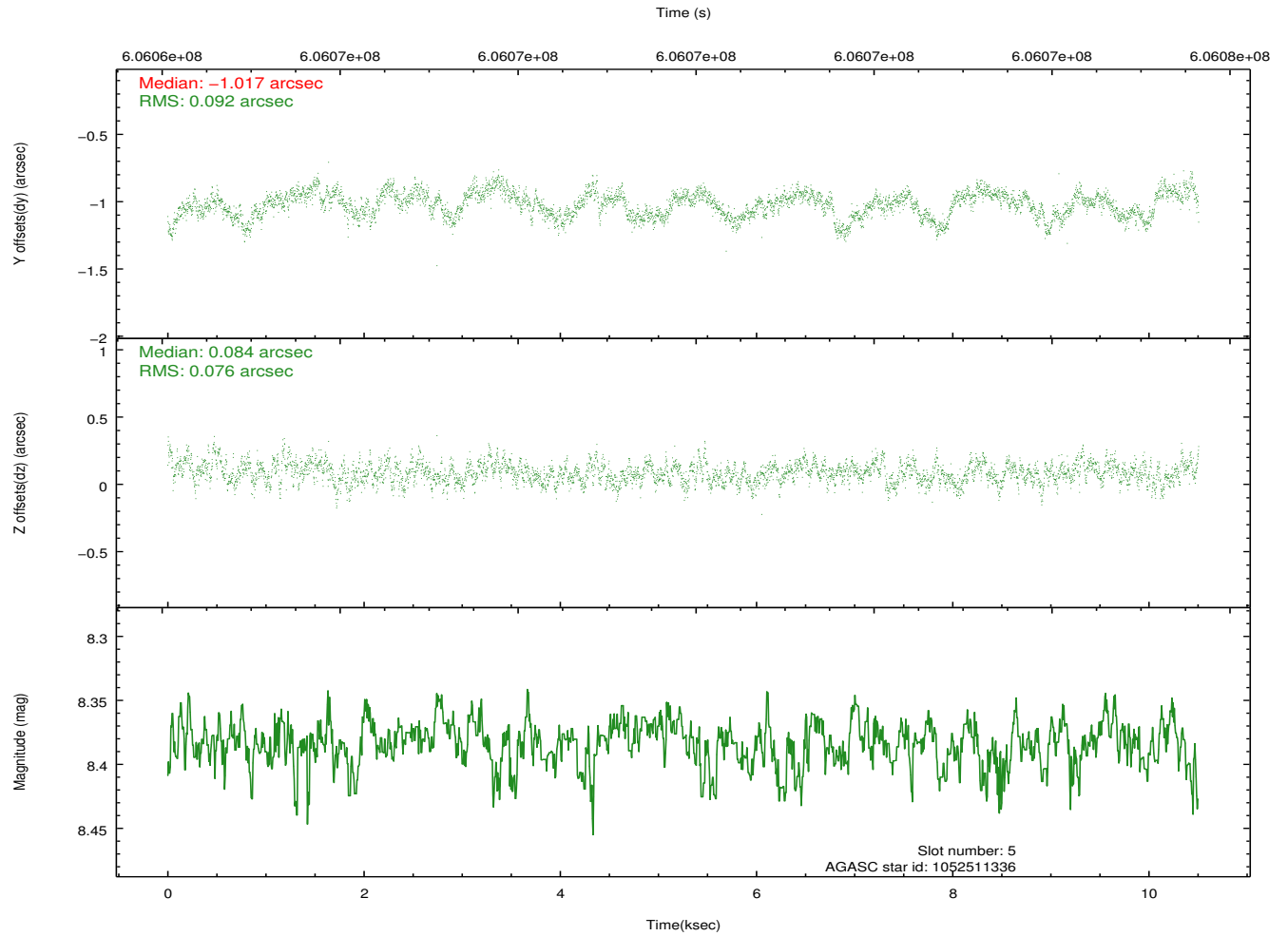
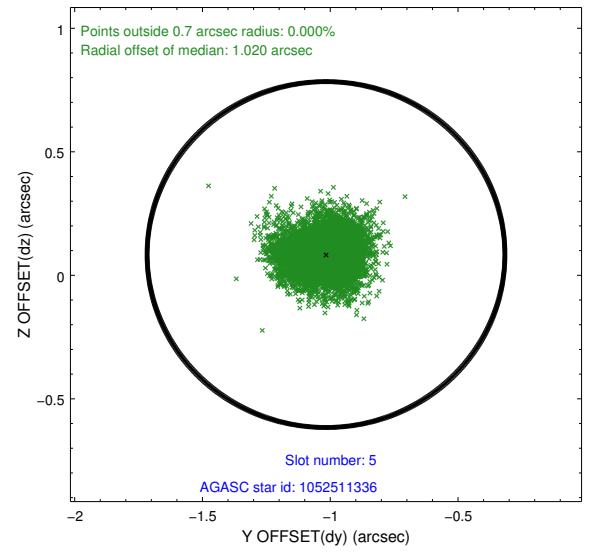
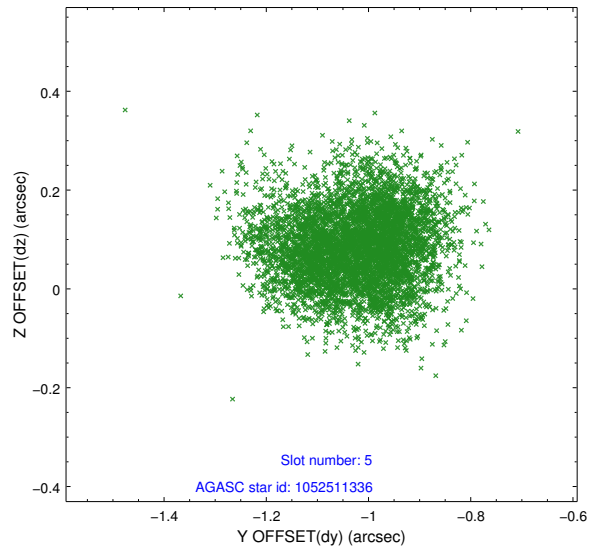
2.4.1 Slot 3



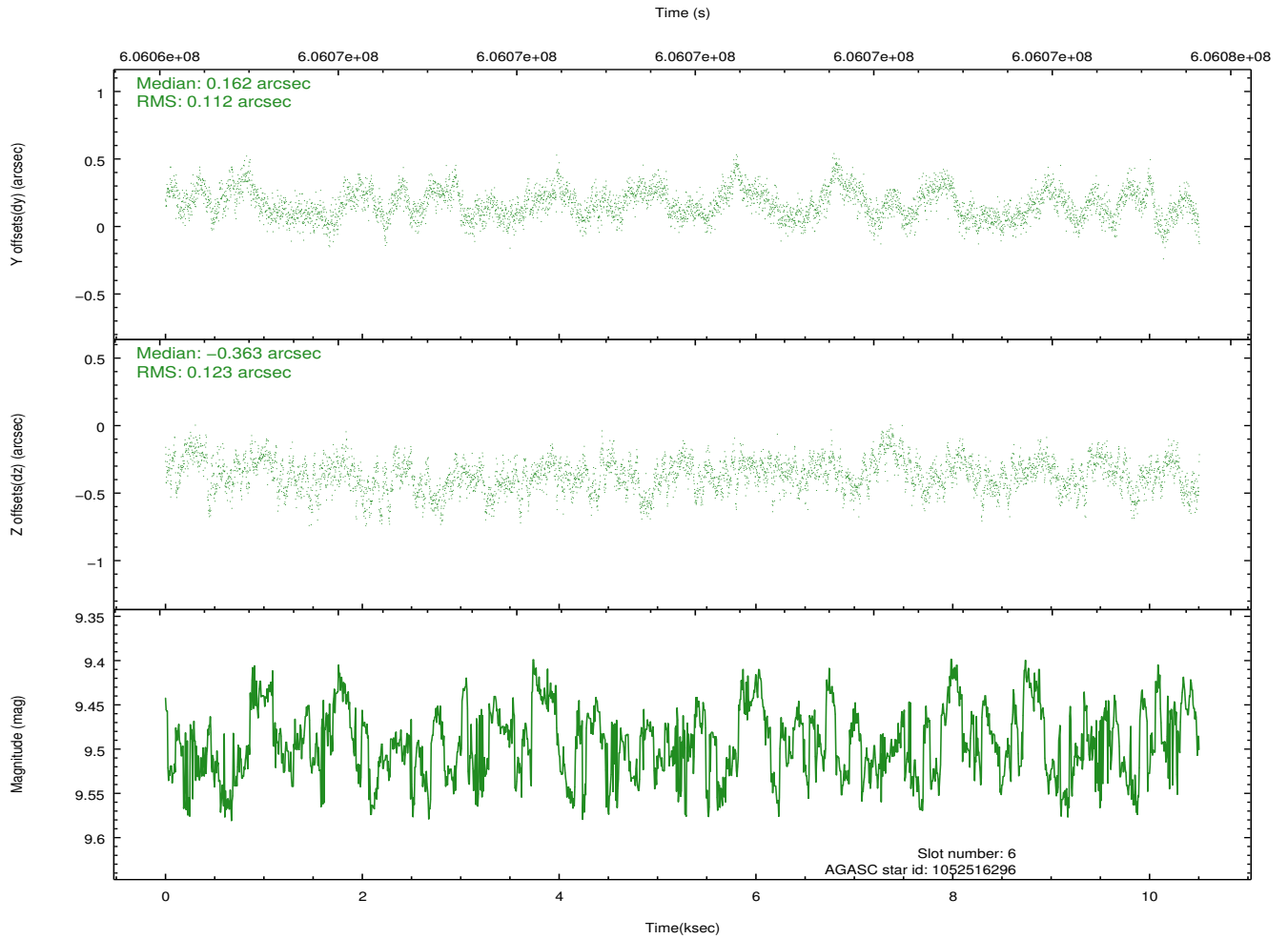
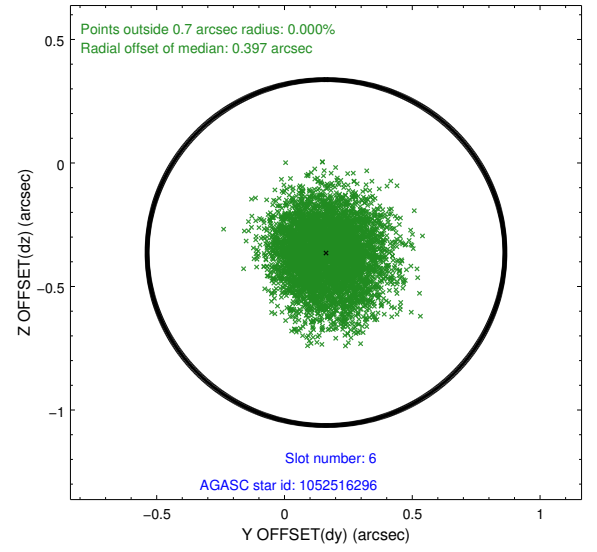
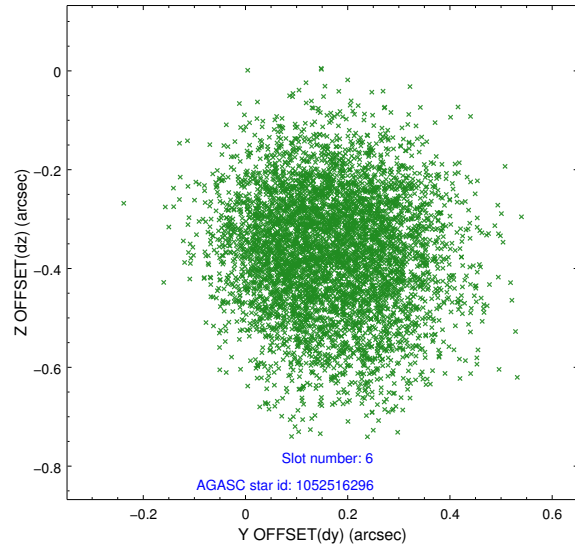
2.4.2 Slot 4



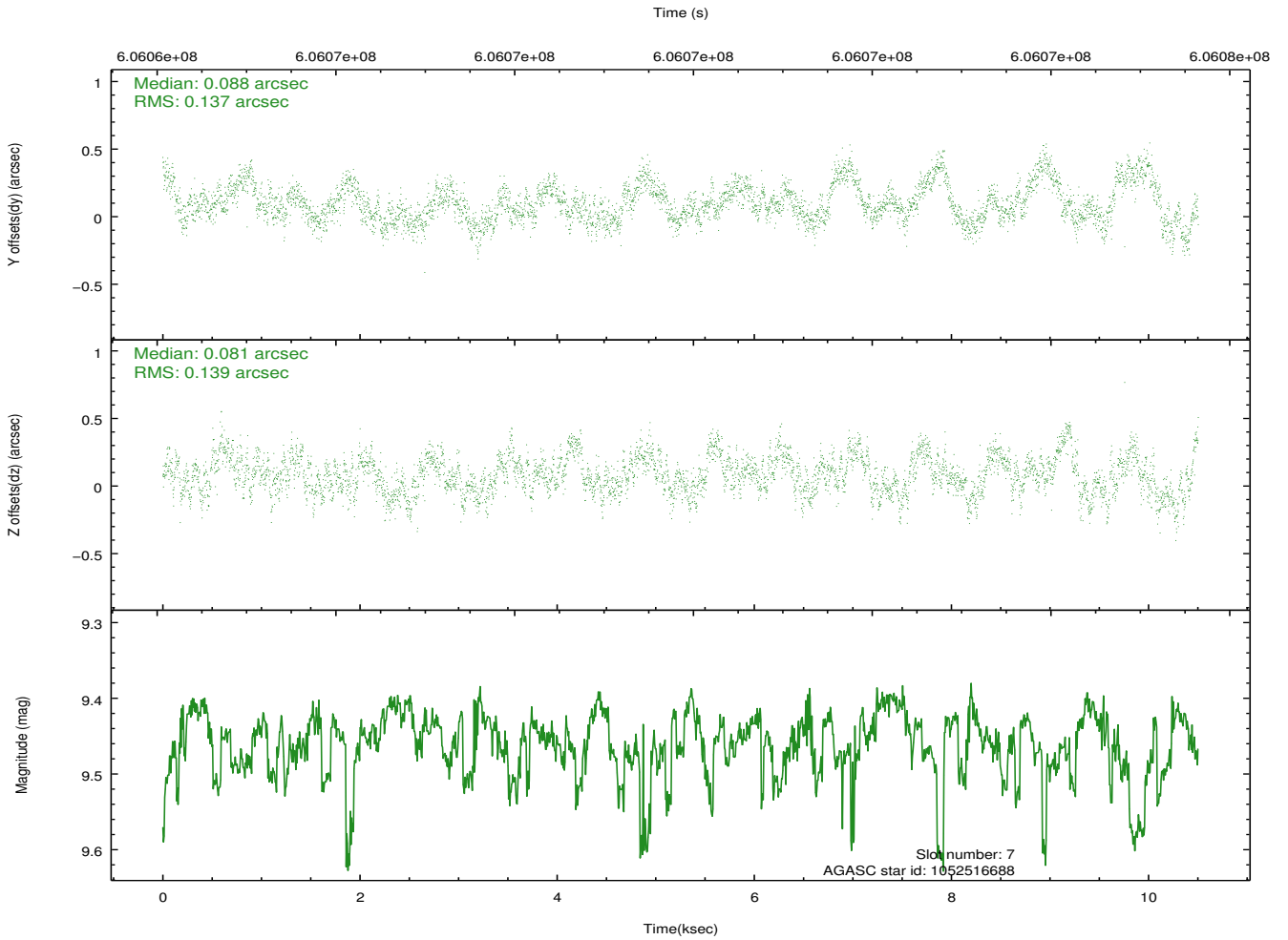
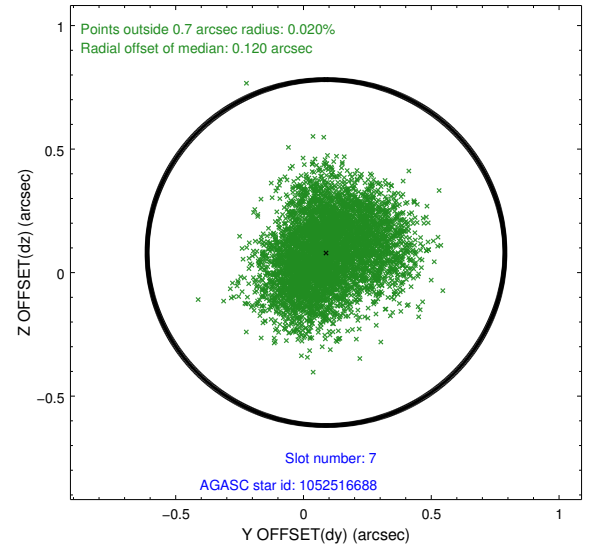
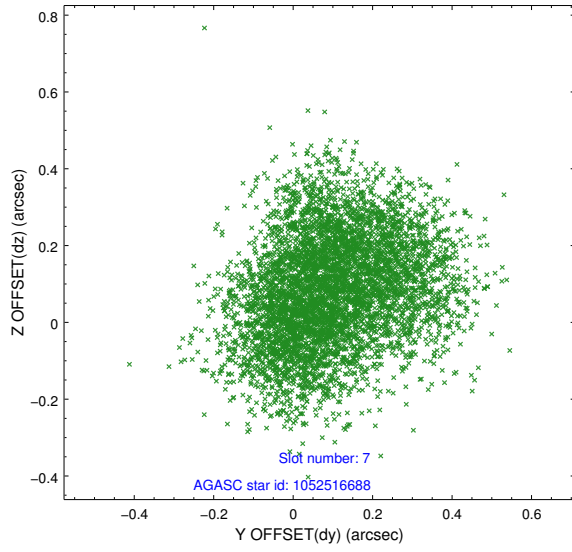
2.4.3 Slot 5



2.4.4 Slot 6

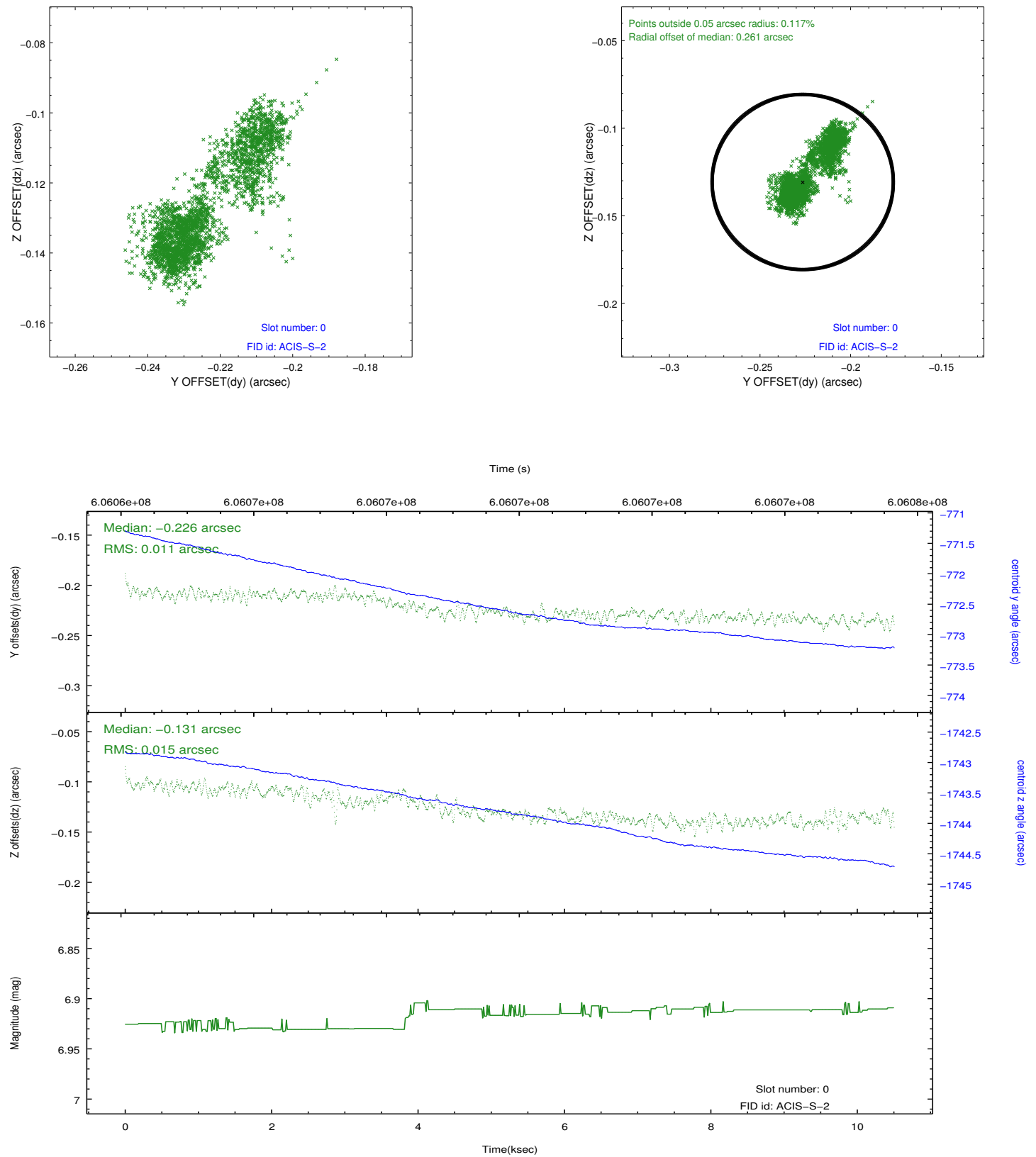


2.4.5 Slot 7

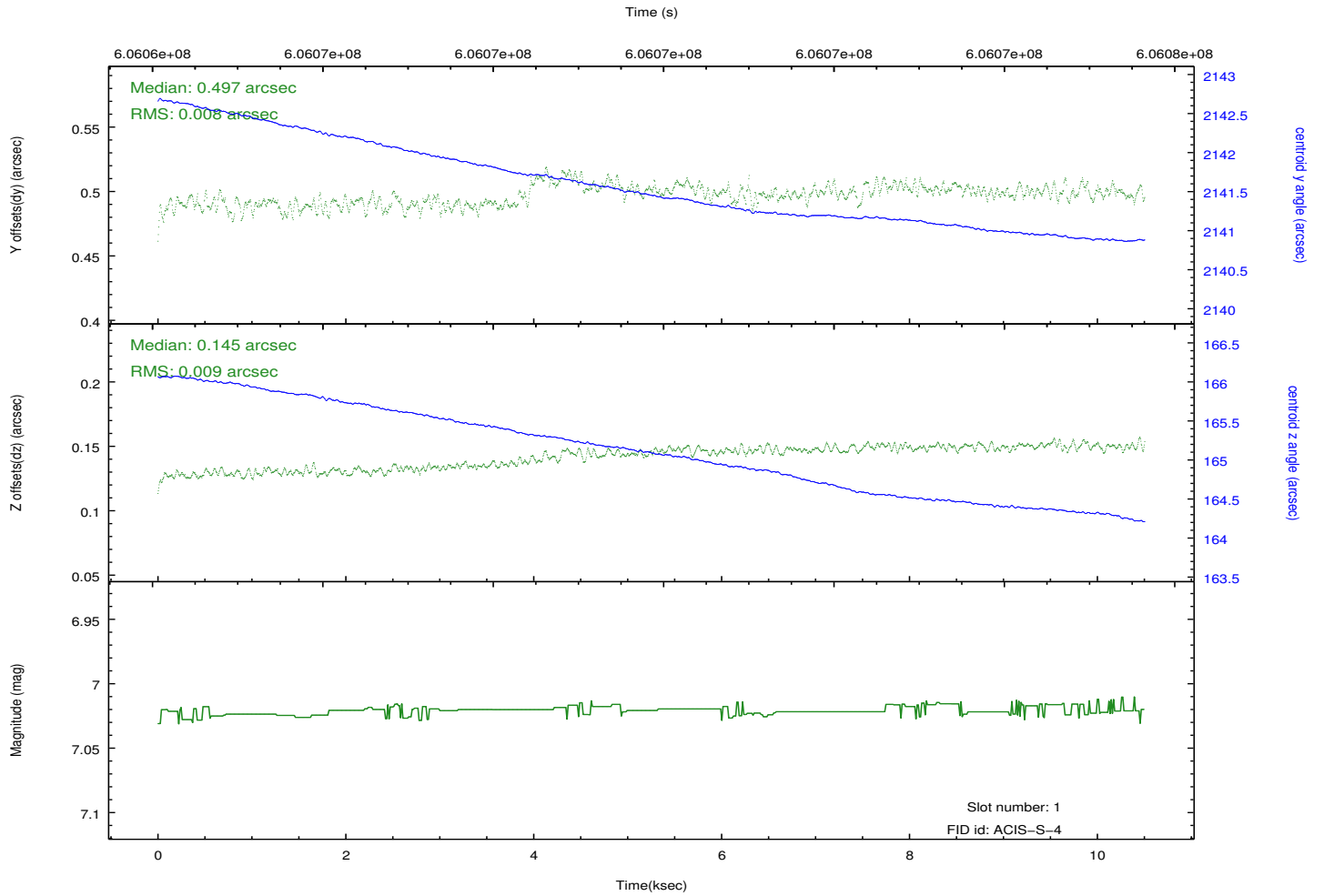
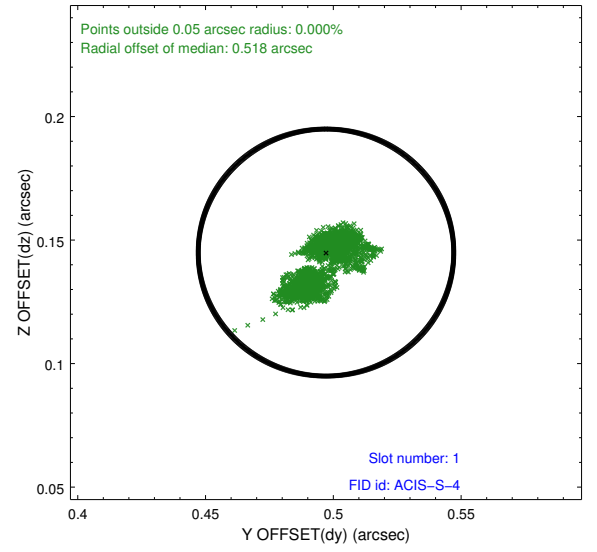
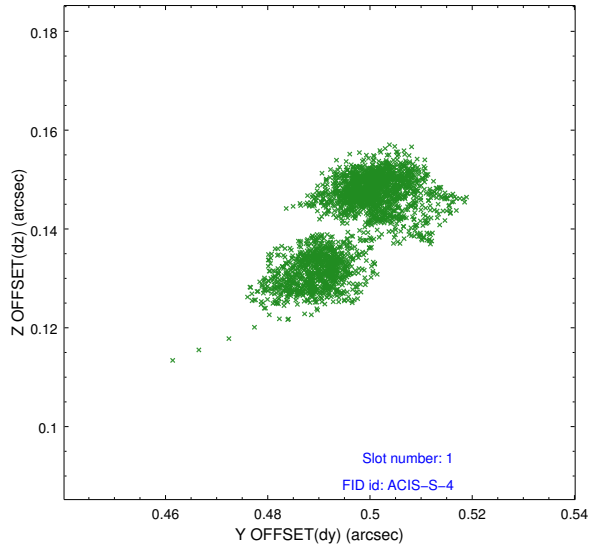


2.5 FID Slots

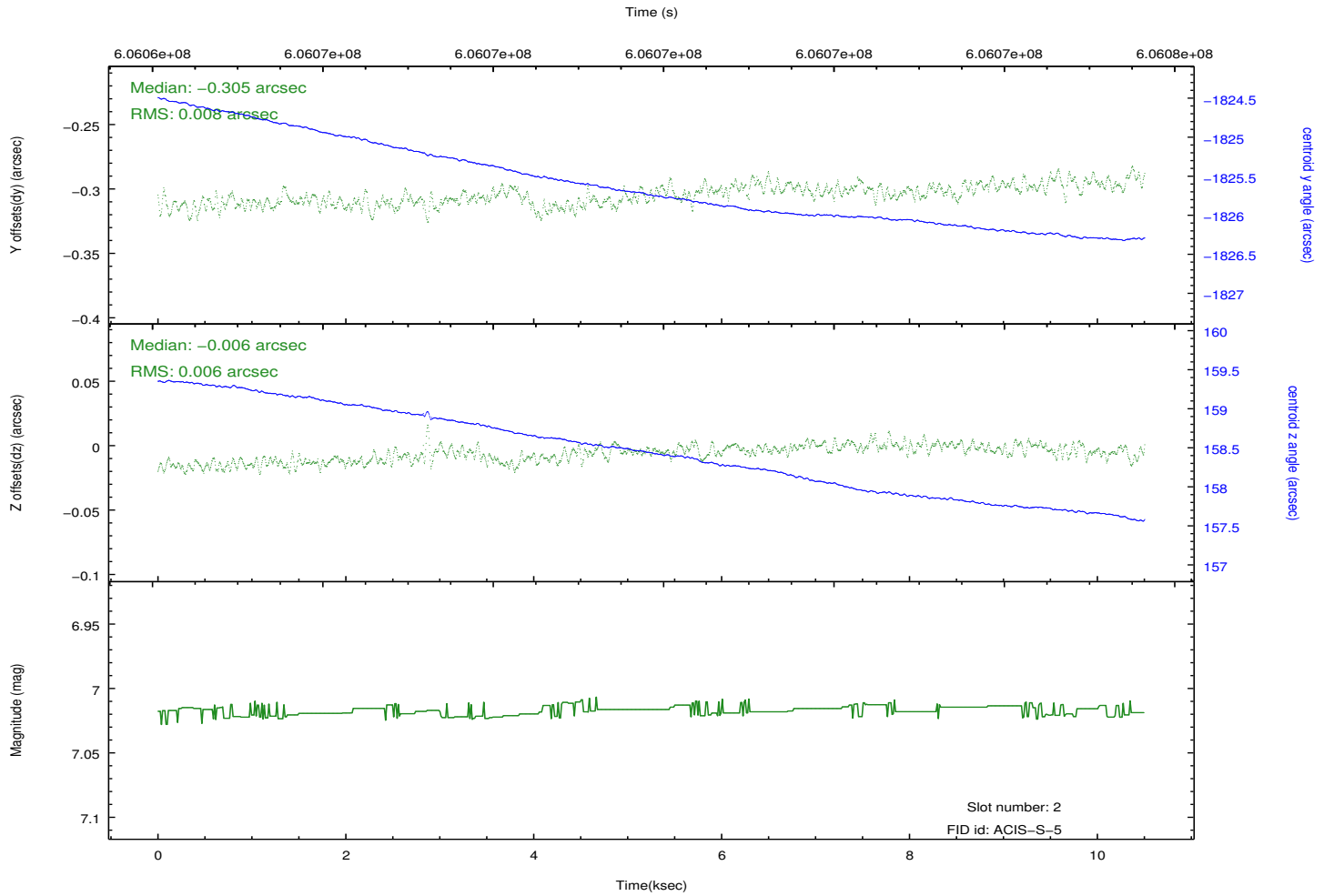
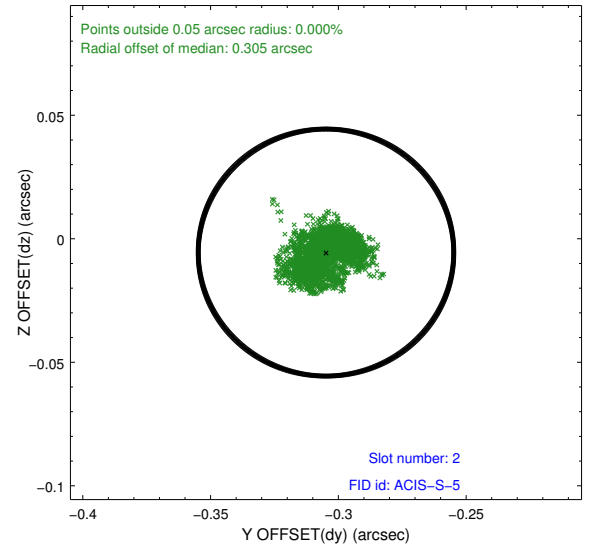
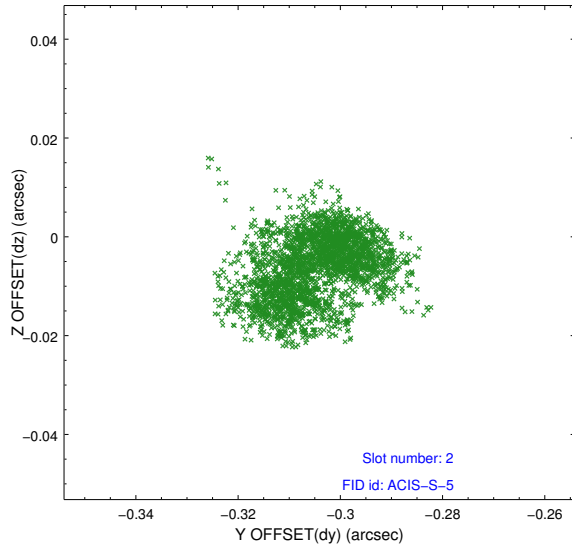
2.5.1 Slot 0



2.5.2 Slot 1



2.5.3 Slot 2



A Summary

A.1 Status

V&V Scientist	Joy Nichols
V&V Date (YYYY-MM-DD)	2017.03.17
V&V Edition	1
V&V Disposition and Status	OK
V&V Charge Time	10.049711672306

A.2 Comments