

V&V Reference Report

L2 ASCDS Version : 10.5.2

Observation 19619 - L2 Version 1
Chandra X-Ray Center

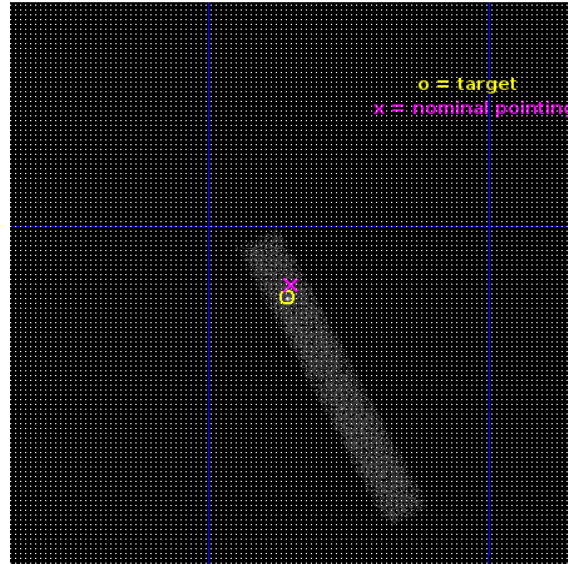
L2 Processing Date : Jan 3 2017

Contents

1	Front	2
2	OBI	3
2.1	OBI	3
2.1.1	Images	3
2.1.2	Bias	3
2.1.3	Parameters	4
2.1.4	Events	4
2.2	Compared Parameters	5
2.3	Aspect	6
2.4	Star Slots	9
2.4.1	Slot 3	9
2.4.2	Slot 4	10
2.4.3	Slot 5	11
2.4.4	Slot 6	12
2.4.5	Slot 7	13
2.5	FID Slots	14
2.5.1	Slot 0	14
2.5.2	Slot 1	15
2.5.3	Slot 2	16
A	Summary	17
A.1	Status	17
A.2	Comments	17

1 Front

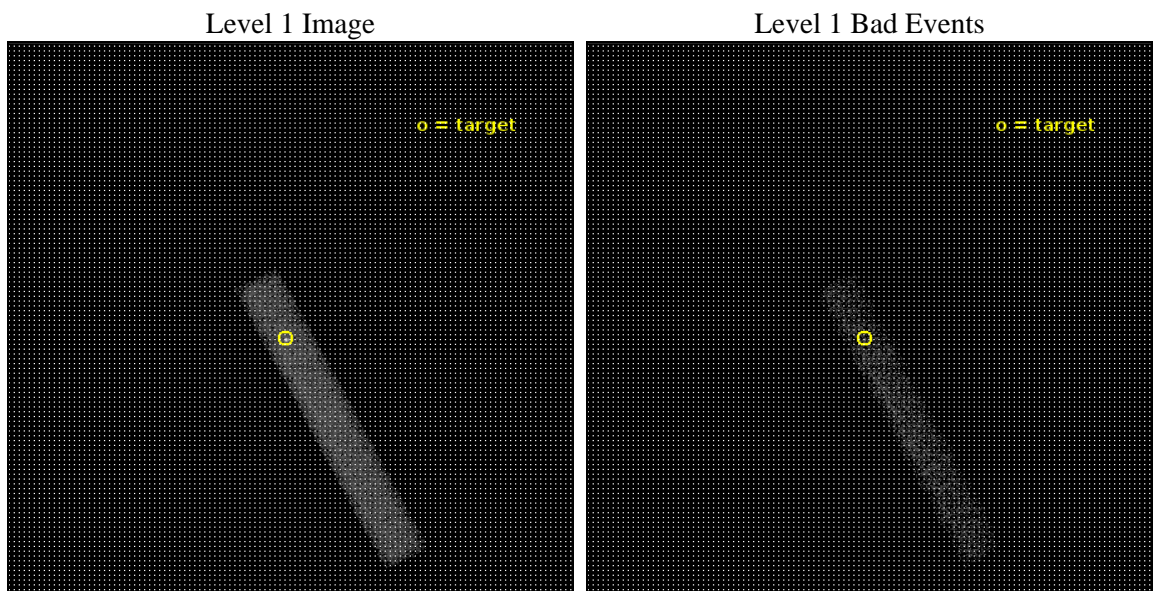
seq_num	703416	Sequence number
obs_id	19619	Observation id
title	MEASURING THE INNERMOST STABLE ORBIT USING MICROLENSING OF THE FE K LINE	Proposal title
observer	George Chartas	Principal investigator
object	RXJ1131-1231	Source name
dtcycle	0	
cycle	P	events from which exps? Prim/Second/Both
ra_targ	172.965	Observer's specified target RA [deg]
dec_targ	-12.5325	Observer's specified target Dec [deg]
ra_nom	172.96294145033	Nominal RA [deg]
dec_nom	-12.526683347421	Nominal Dec [deg]
roll_nom	62.549325105348	Nominal Roll [deg]
revision	1	Processing version of data
ontime	25069.19850564	Sum of GTIs [s]
livetime	22736.43978382	Livetime [s]
ontime7	25069.19850564	Sum of GTIs [s]
l2events	19674	Number of level 2 events



2 OBI

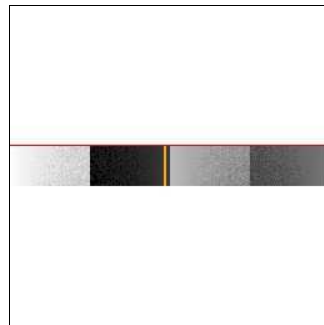
2.1 OBI

2.1.1 Images



2.1.2 Bias

Chip 7



2.1.3 Parameters

obi_num	0	Obi number	sched_exp_time	25000.000000	[s] Scheduled observation exposure time
ascdsver	10.5.2	Processing system revision	ontime	25069.19850564	Sum of GTIs [s]
caldsver	4.7.3	 	ontime7	25069.19850564	Sum of GTIs [s]
date	2017-01-03T20:32:09	Date and time of file creation	l1events	35742	Number of level 1 events
revision	1	Processing version of data			

2.1.4 Events

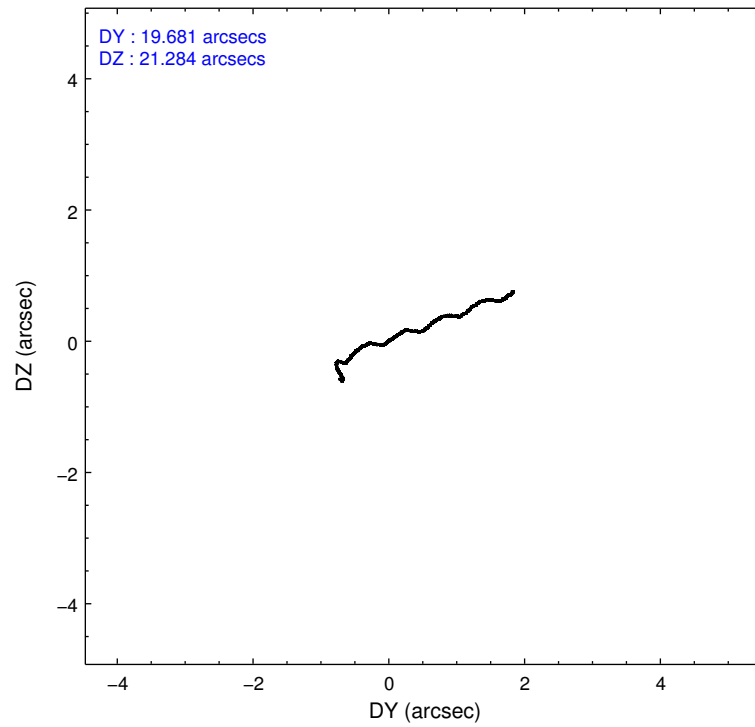
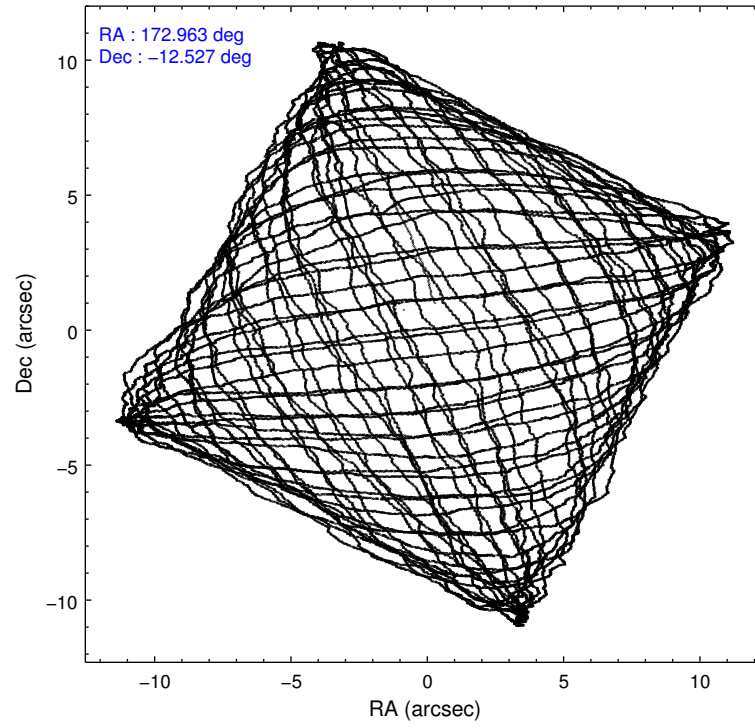
	ccd 7
level 1 events	35742
rejected events	15401
rejected %	43%

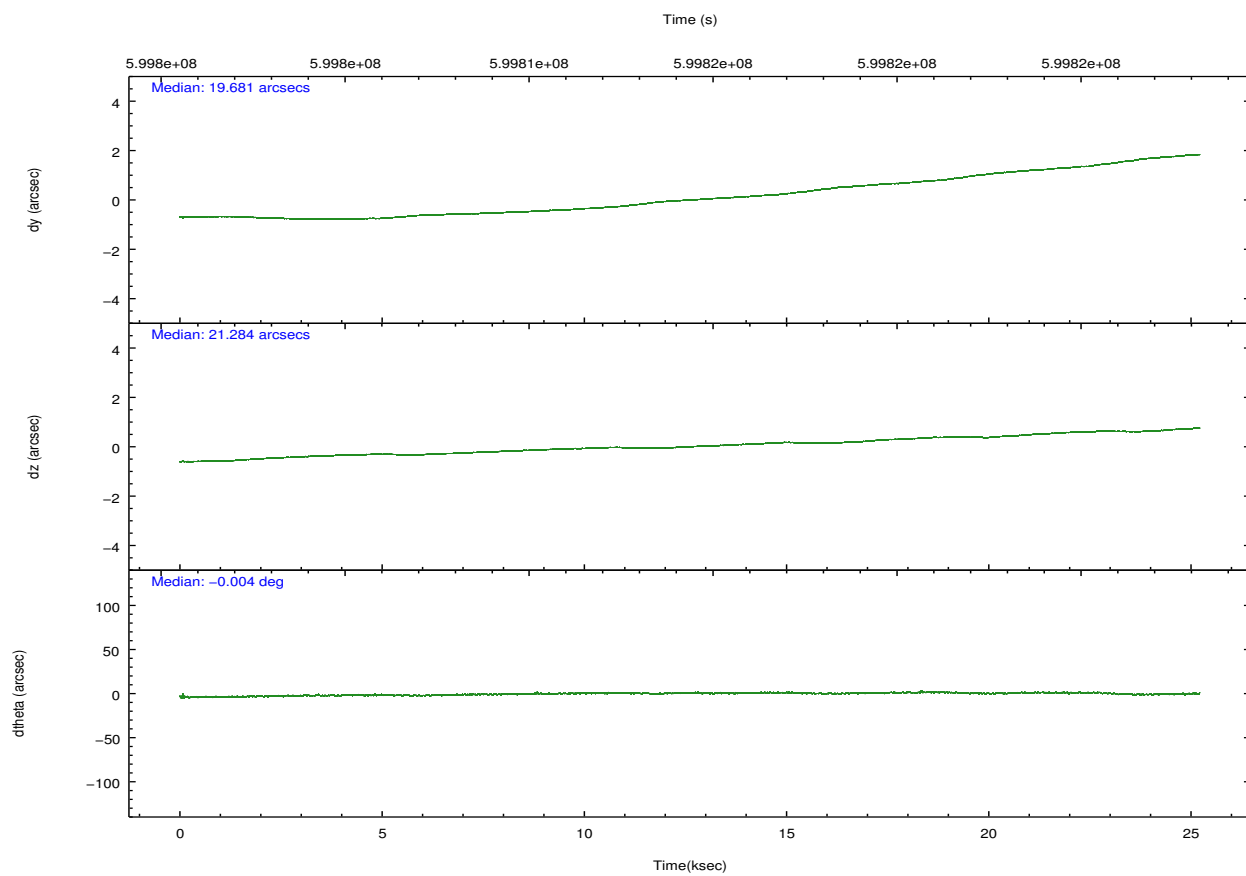
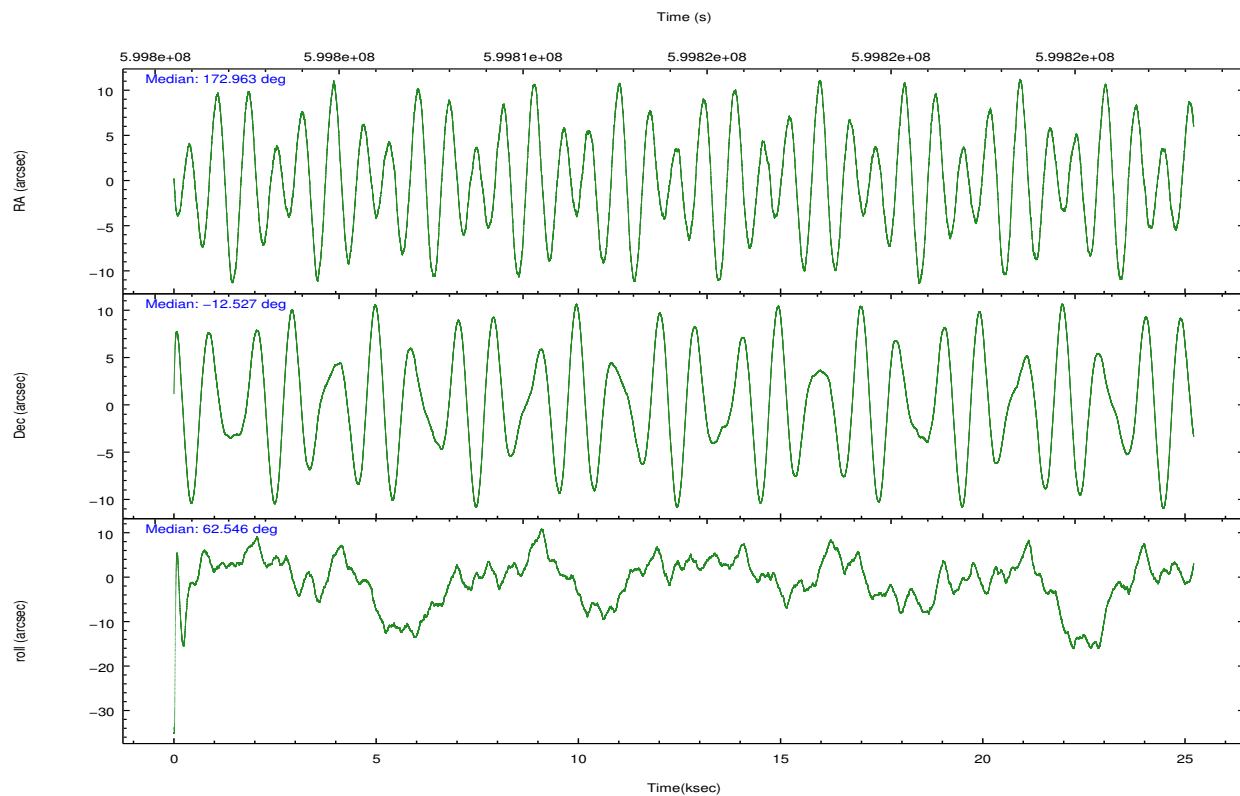
	ccd 7
grade 0 events	2882
	8%
grade 1 events	46
	0%
grade 2 events	4261
	11%
grade 3 events	2595
	7%
grade 4 events	2526
	7%
grade 5 events	3029
	8%
grade 6 events	8077
	22%
grade 7 events	12326
	34%

2.2 Compared Parameters

Parameter	Planned	Actual	Parameter	Planned	Actual
Instrument	ACIS	ACIS	Obspar format version number	7	7
Detector	ACIS-7	ACIS-7	Obspar file type	PREDICTED	ACTUAL
Grating	NONE	NONE	Obspar update status	NONE	UPDATED
Data mode	VFAINT	VFAINT	Number of optional ACIS chips dropped	0	0
Observation mode	POINTING	POINTING	On-chip summing requested	N	N
[deg] Pointing RA	172.964565	172.9629414503323	Subarray requested	CUSTOM	1/8
[deg] Pointing Dec	-12.554089	-12.52668334742051	Subarray start row	449	449
[deg] Pointing Roll	62.393082	62.54932510534844	Subarray row count	128	128
[mm] SIM focus pos	-0.684267	-0.6828225247311905	Alternating exposures requested	N	N
[mm] SIM defocus	0	0.001444936568705701	[s] Primary exposure time	0.000000	0.4
[mm] SIM translation stage pos	-190.132523	-190.1400660498719			
[mm] SIM translation stage offset	0	0.00754346686406393			
[s] Observation start time (MET)	599801982.184000	599801178.36159			
Observation start date	2017-01-03T03:38:33	2017-01-03T03:26:18			
[s] Observation end time (MET)	599826982.184000	599827671.02562			
Observation end date	2017-01-03T10:35:13	2017-01-03T10:47:51			
Read mode	TIMED	TIMED			

2.3 Aspect



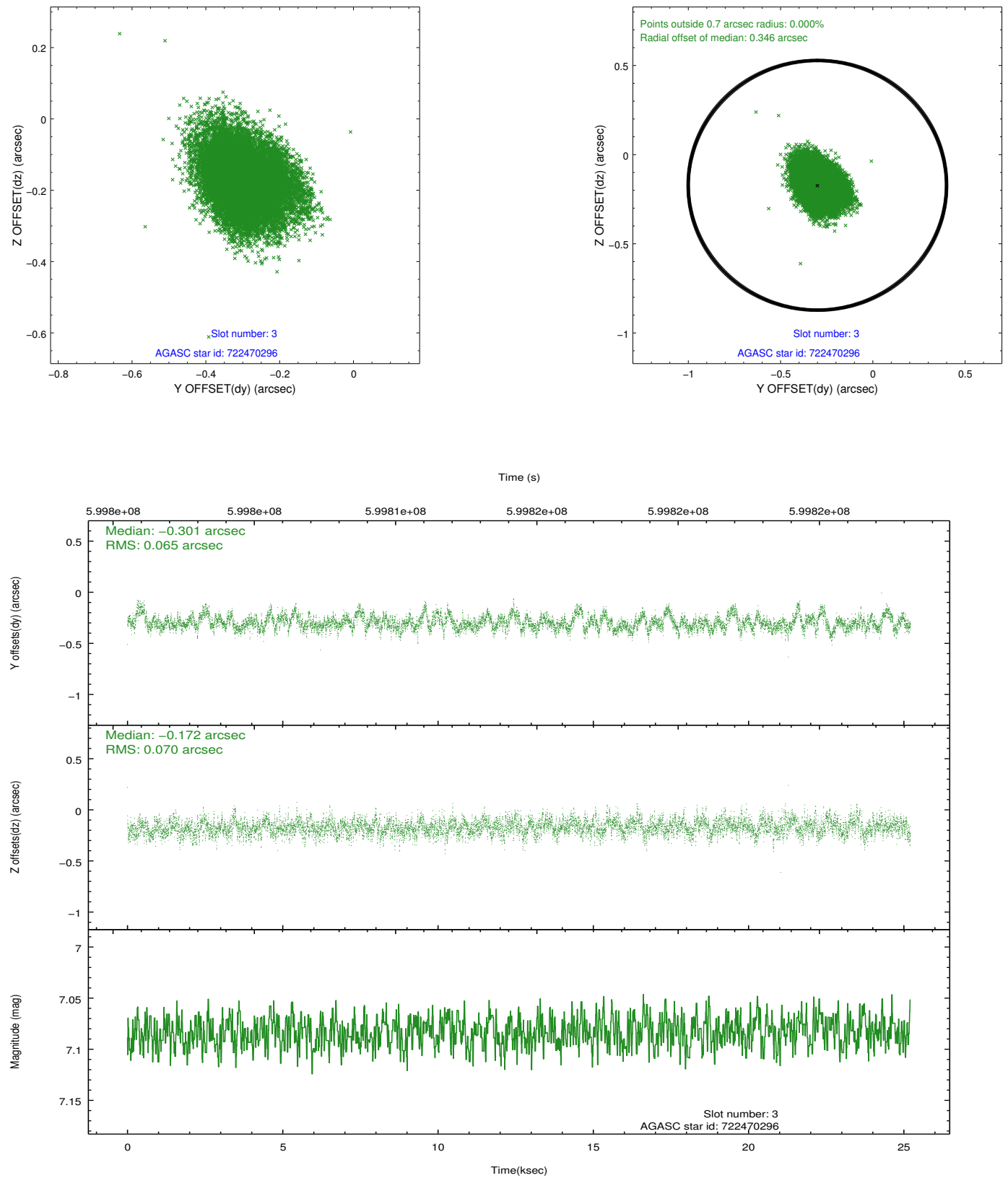


Slot Statistics

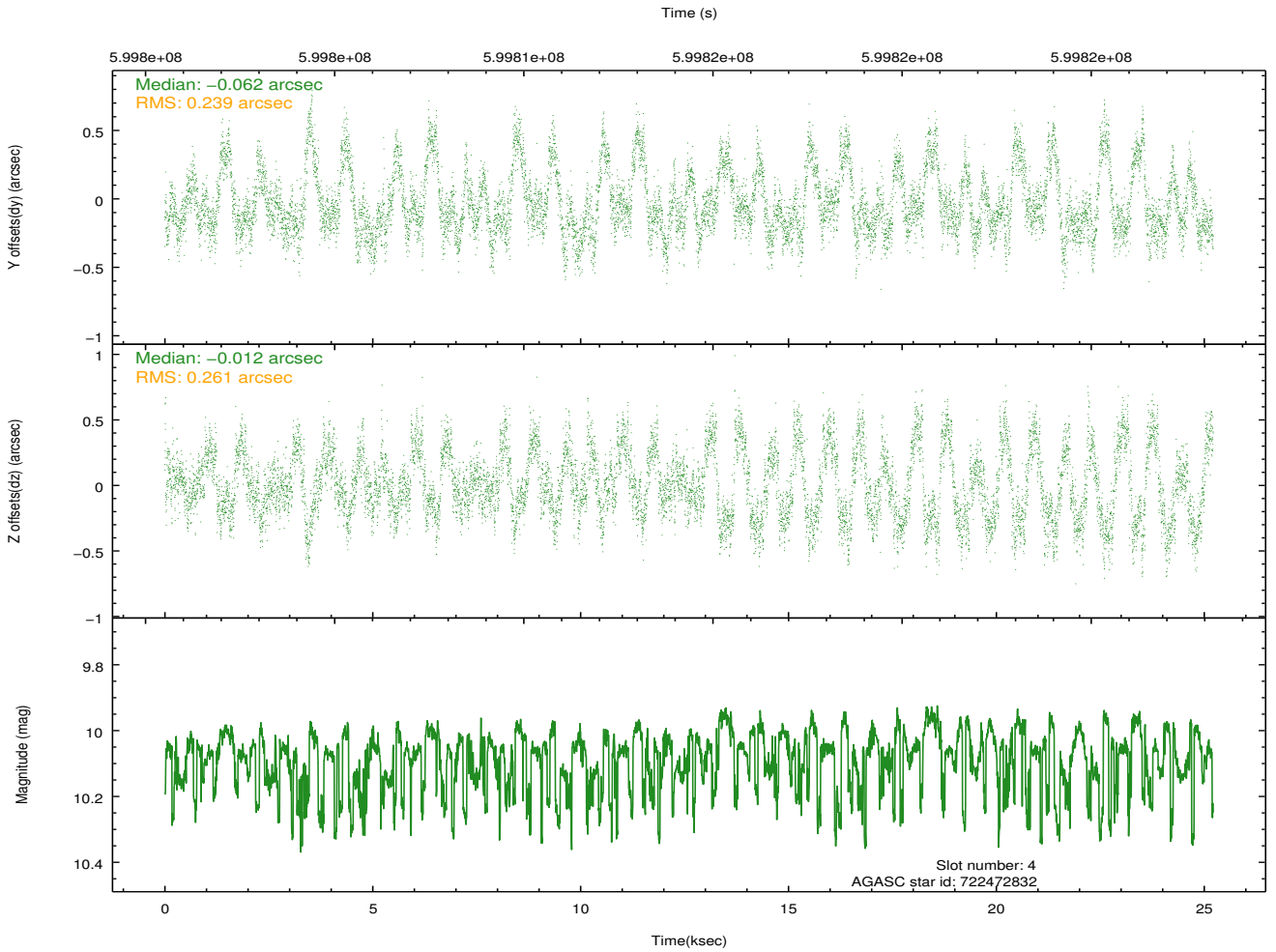
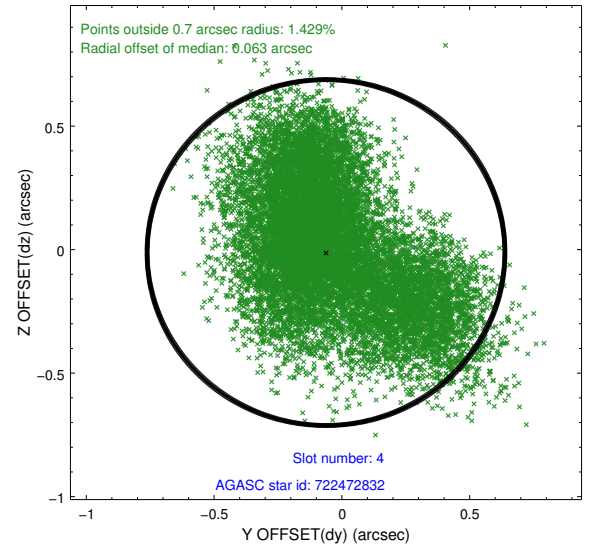
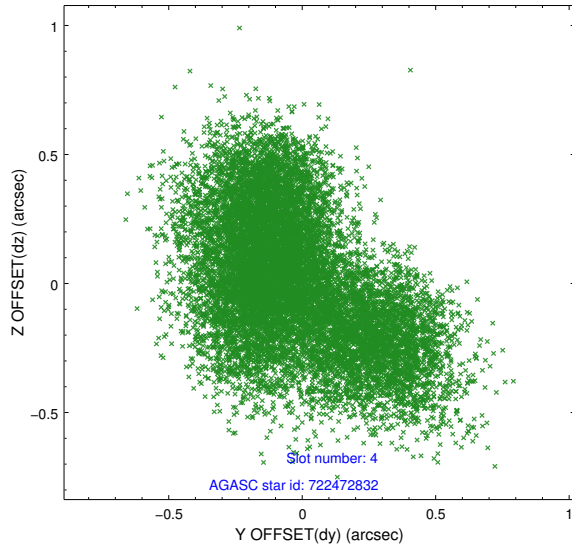
slot	status	used	id	mag	n_pts	med_dy	med_dz	dr1	dr2	ra	dec	mean_y	mean_z
0	FID		ACIS-S-2	7.04	6150	-0.222	-0.122	0.015	0.025	0.000000	0.000000	-773.17	-1743.00
1	FID		ACIS-S-4	7.15	6150	0.495	0.140	0.015	0.023	0.000000	0.000000	2140.77	165.61
2	FID		ACIS-S-5	7.15	6150	-0.303	-0.010	0.018	0.025	0.000000	0.000000	-1825.94	159.28
3	GUIDE	used	722470296	7.08	12300	-0.301	-0.172	0.102	0.167	172.921689	-12.381367	480.87	422.36
4	GUIDE	used	722472832	10.07	12243	-0.062	-0.012	0.387	0.599	173.078970	-12.015349	1905.32	542.23
5	GUIDE	used	722473176	9.45	12283	-0.217	-0.399	0.223	0.358	172.599746	-12.066793	958.14	1950.89
6	GUIDE	used	722871728	9.61	12282	0.170	0.408	0.222	0.352	173.202235	-12.568355	341.46	-762.84
7	GUIDE	used	722873464	7.29	12297	0.361	0.151	0.165	0.264	172.661543	-13.050266	-2075.96	113.07

2.4 Star Slots

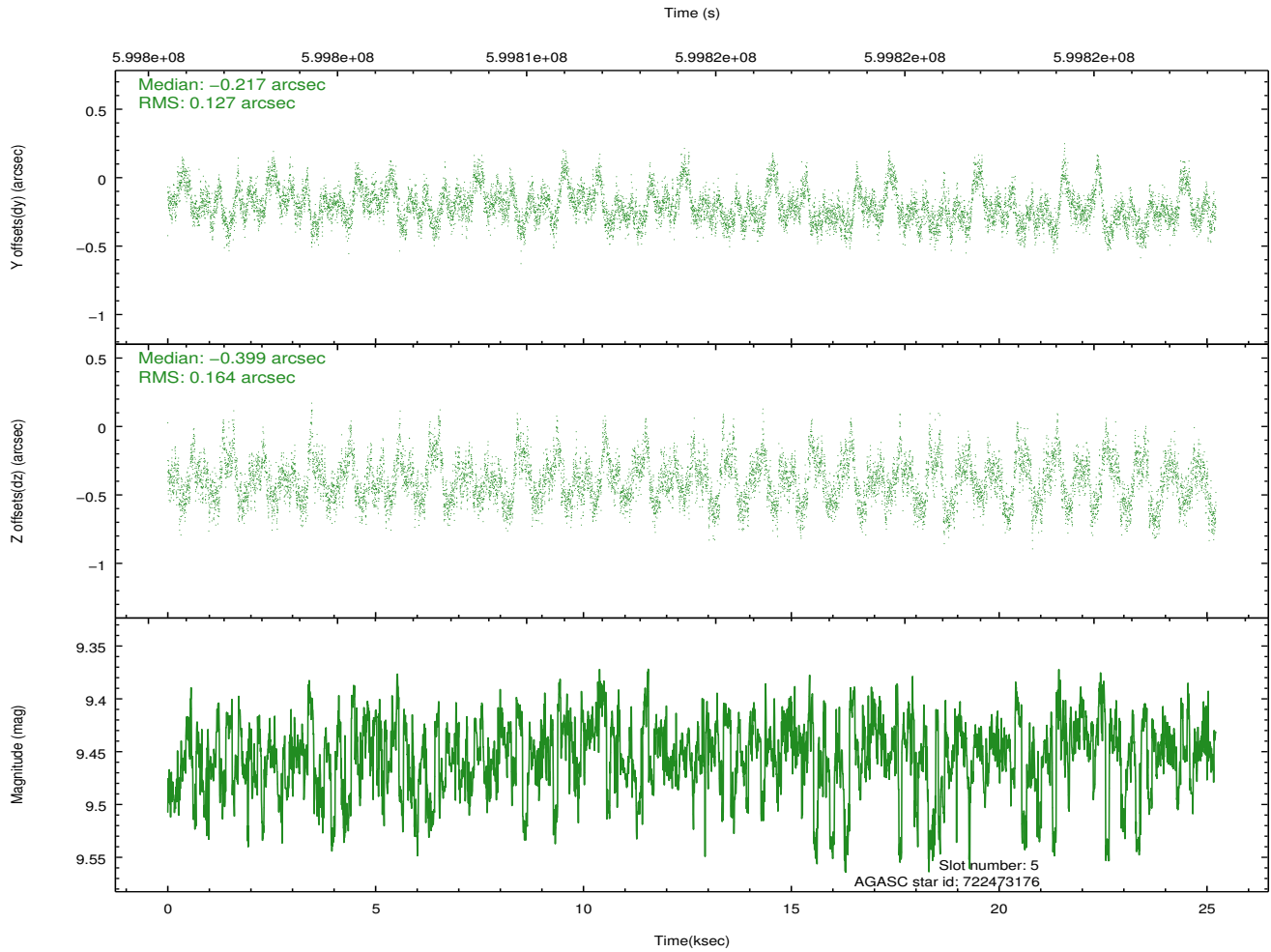
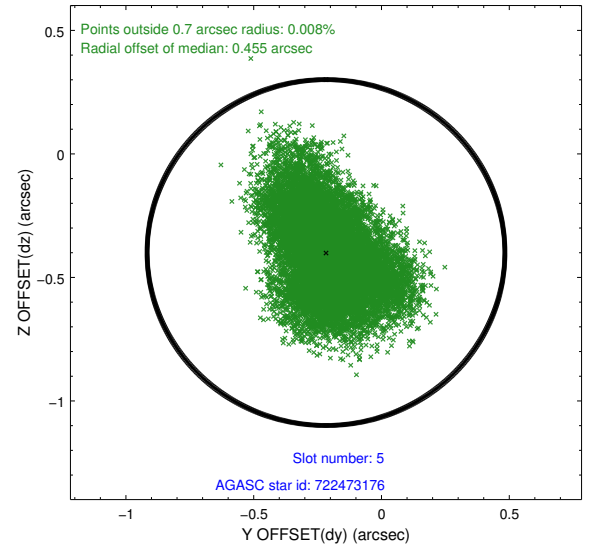
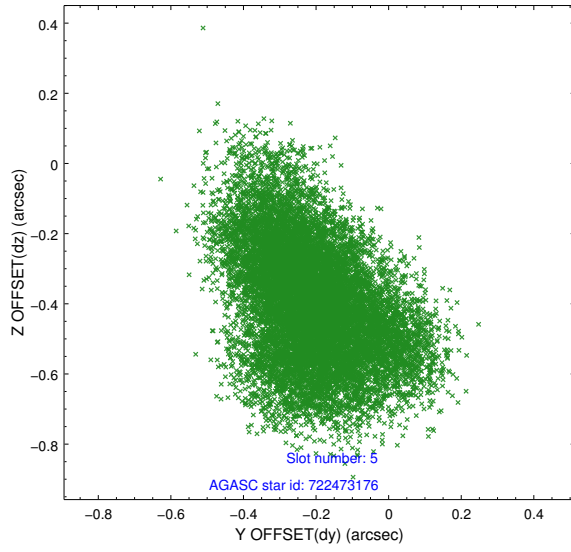
2.4.1 Slot 3



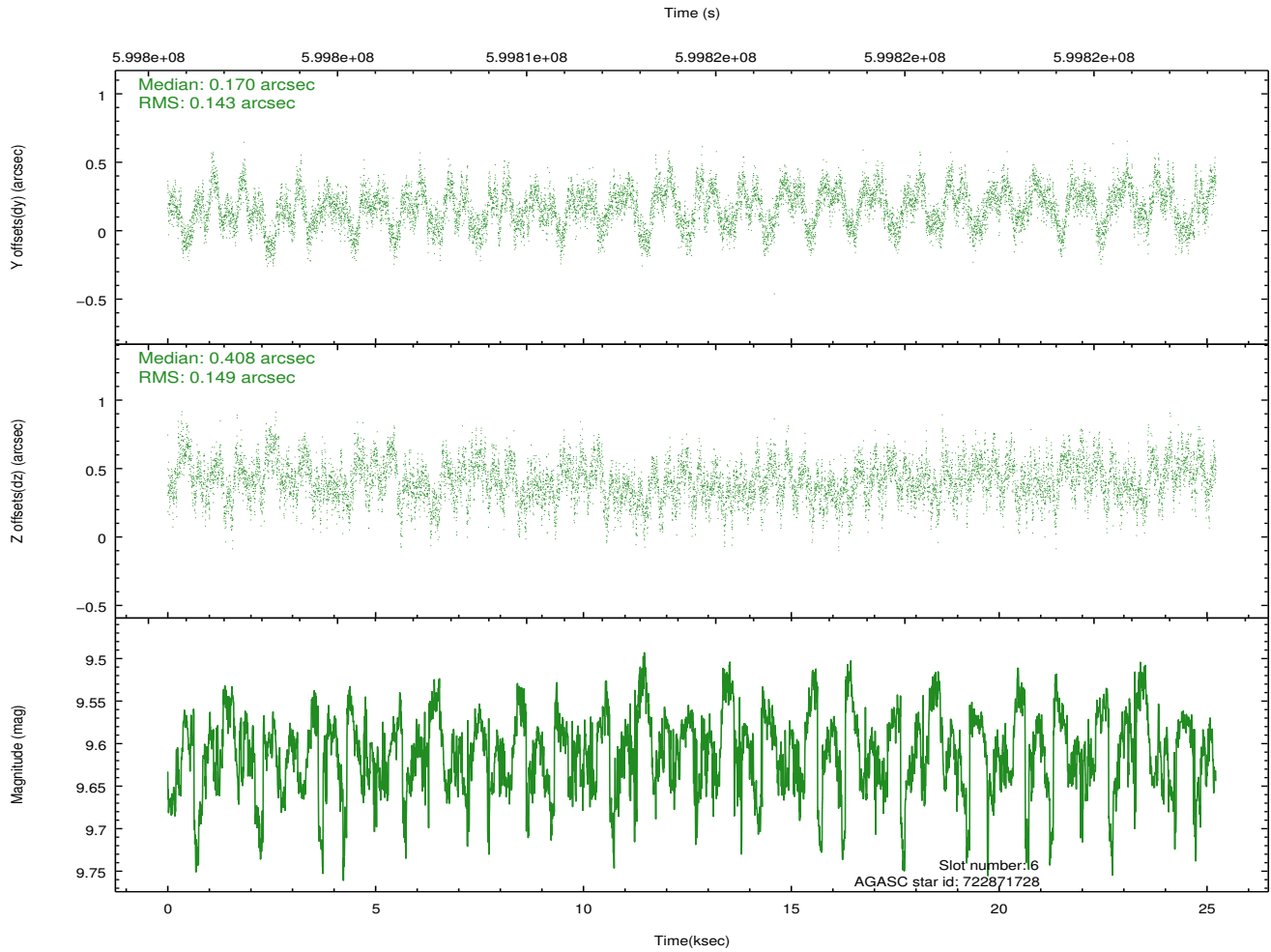
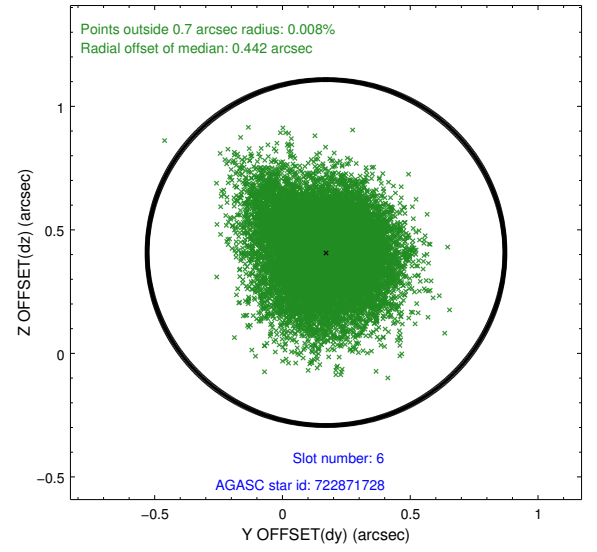
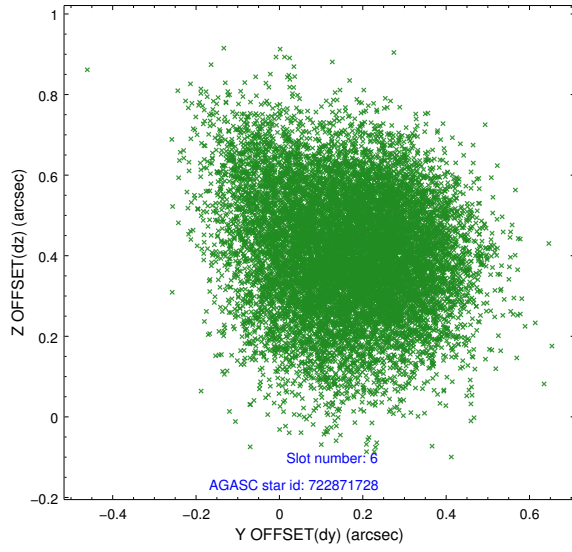
2.4.2 Slot 4



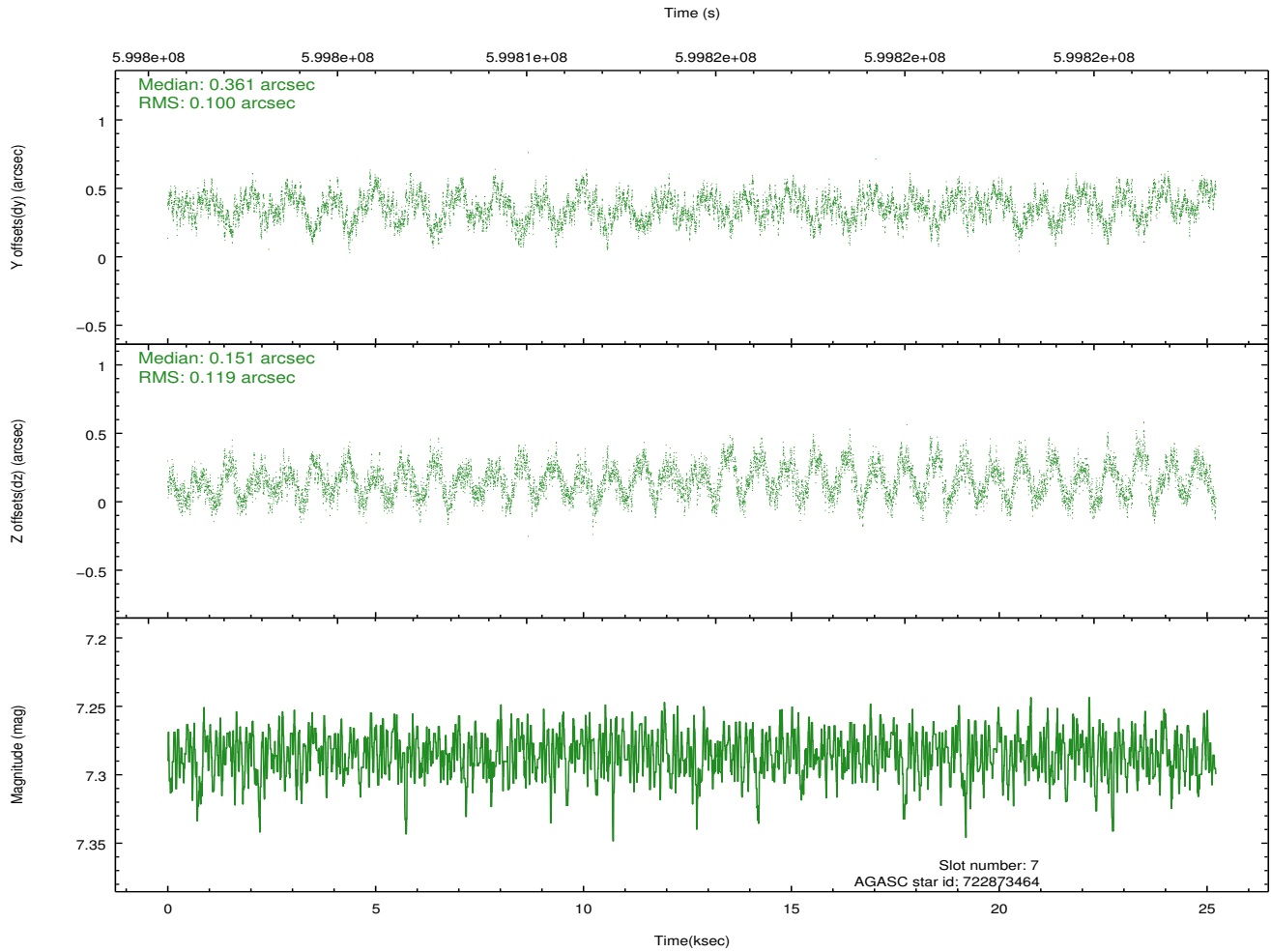
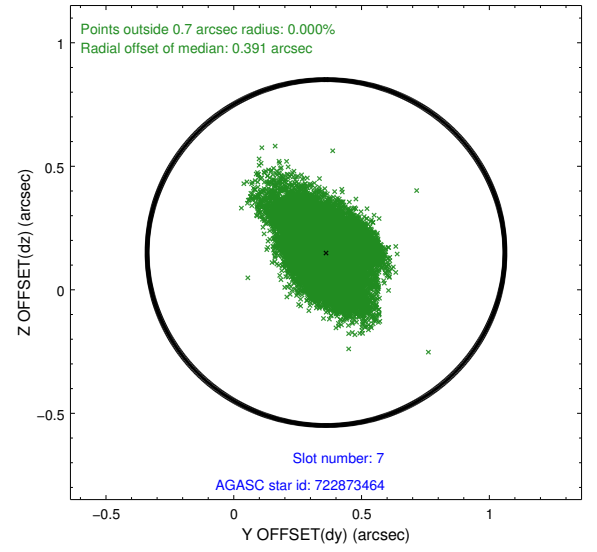
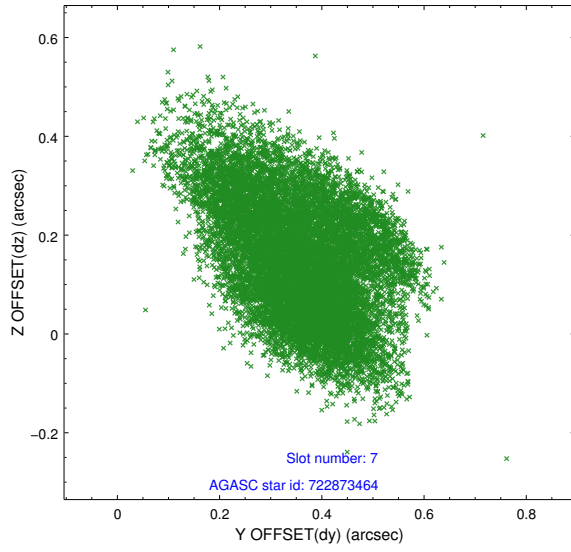
2.4.3 Slot 5



2.4.4 Slot 6

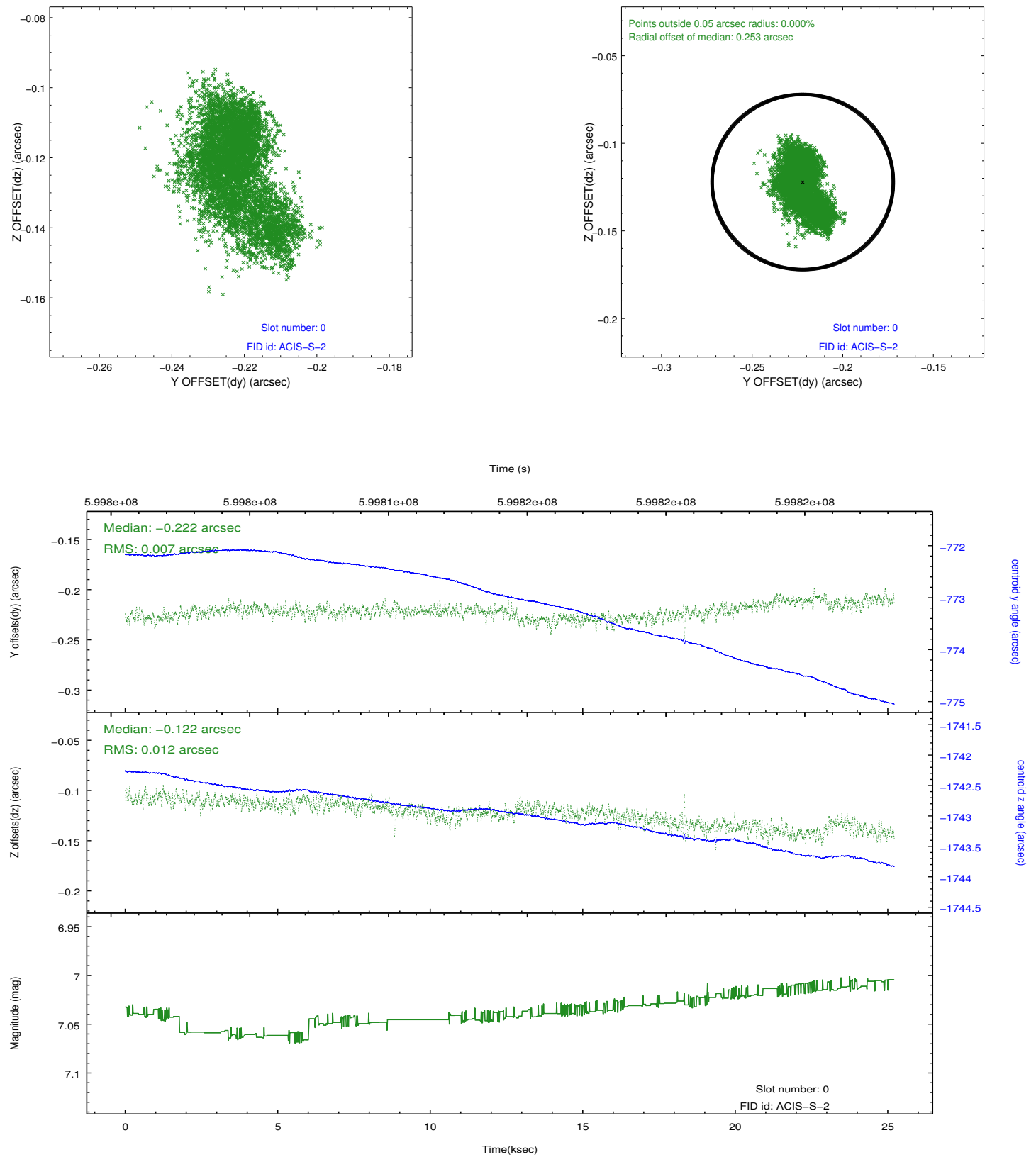


2.4.5 Slot 7

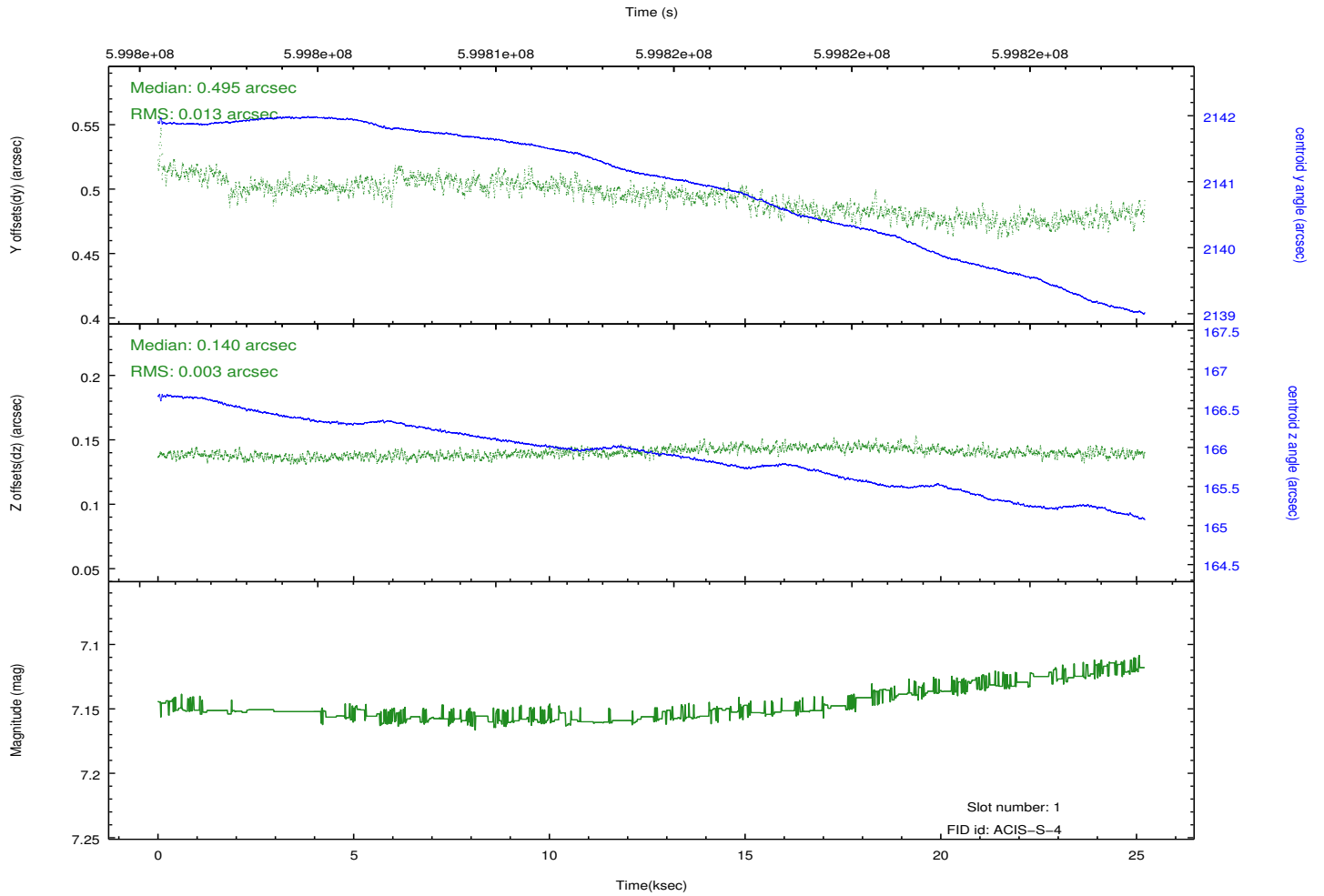
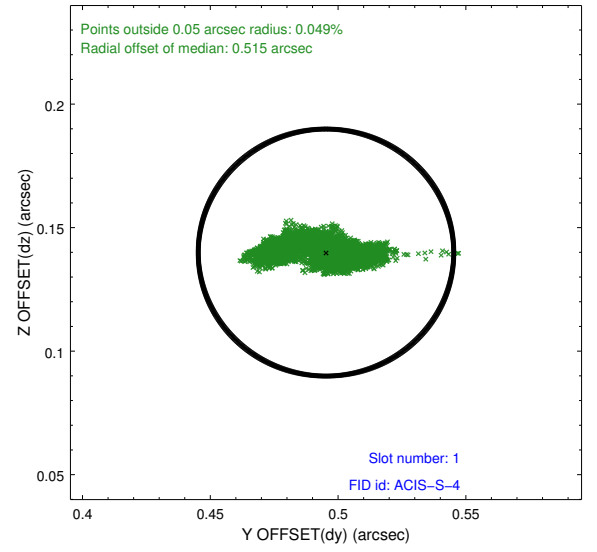
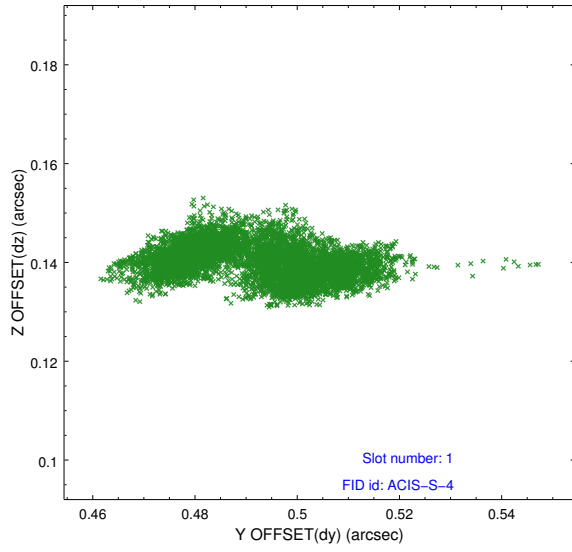


2.5 FID Slots

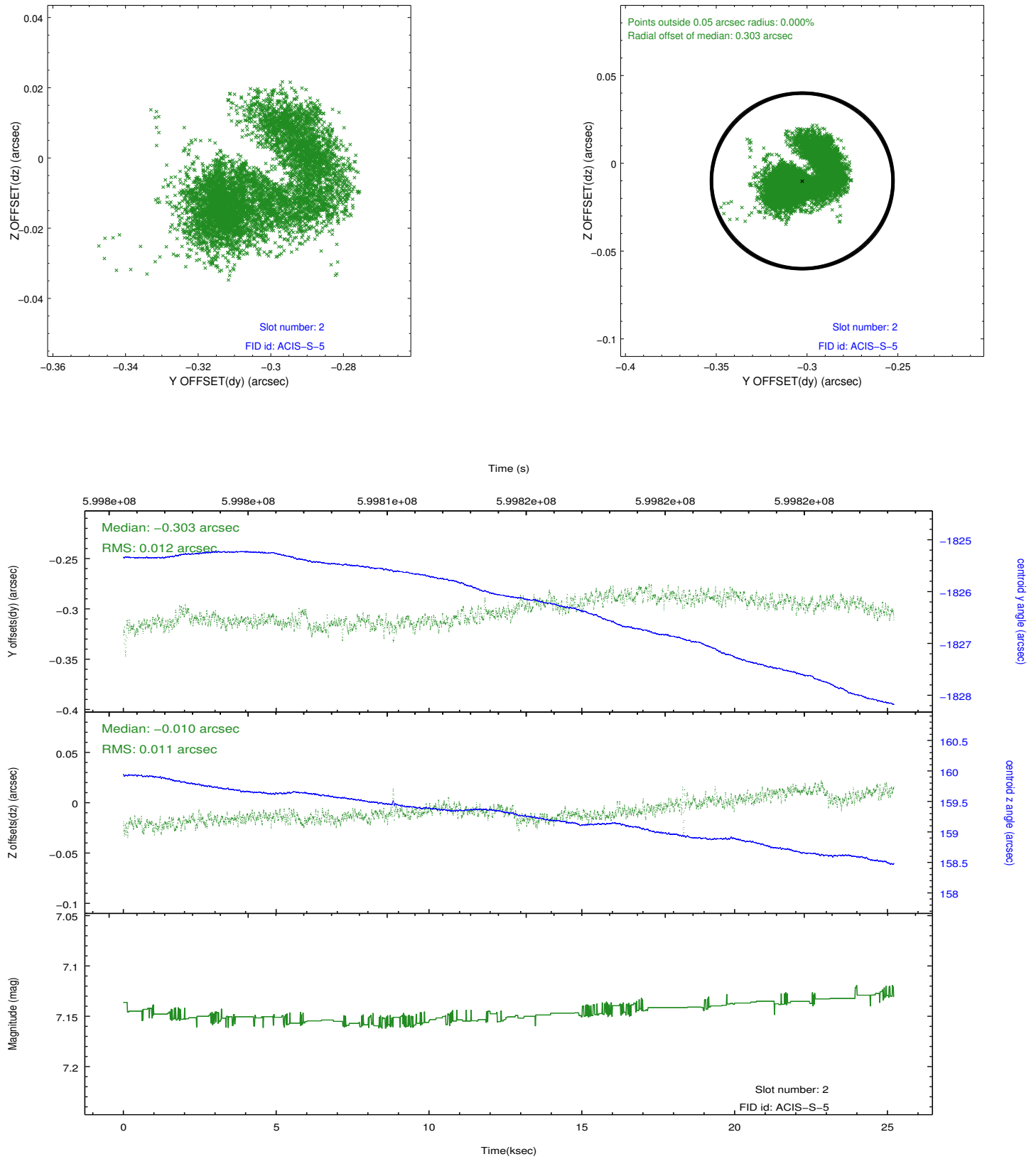
2.5.1 Slot 0



2.5.2 Slot 1



2.5.3 Slot 2



A Summary

A.1 Status

V&V Scientist	Beth Sundheim
V&V Date (YYYY-MM-DD)	2017.01.03
V&V Edition	1
V&V Disposition and Status	OK
V&V Charge Time	25.06919850564

A.2 Comments