

V&V Reference Report

L2 ASCDS Version : 10.5.4

Observation 19528 - L2 Version 1
Chandra X-Ray Center

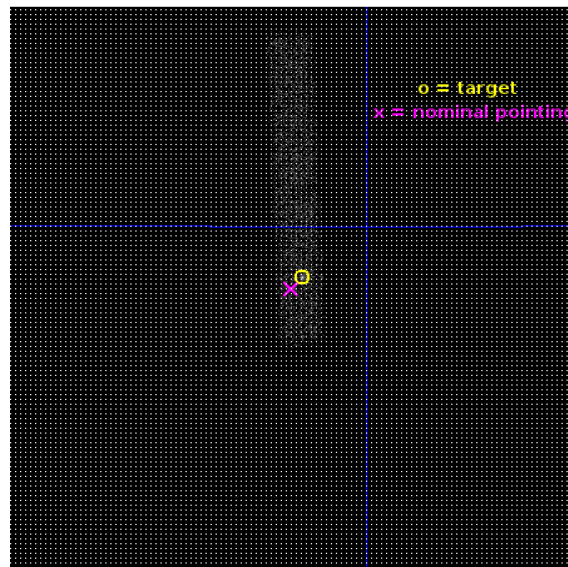
L2 Processing Date : Apr 28 2017

Contents

1	Front	2
2	OBI	3
2.1	OBI	3
2.1.1	Images	3
2.1.2	Bias	3
2.1.3	Parameters	4
2.1.4	Events	4
2.2	Compared Parameters	5
2.3	Aspect	6
2.4	Star Slots	9
2.4.1	Slot 3	9
2.4.2	Slot 4	10
2.4.3	Slot 5	11
2.4.4	Slot 6	12
2.4.5	Slot 7	13
2.5	FID Slots	14
2.5.1	Slot 0	14
2.5.2	Slot 1	15
2.5.3	Slot 2	16
A	Summary	17
A.1	Status	17
A.2	Comments	17

1 Front

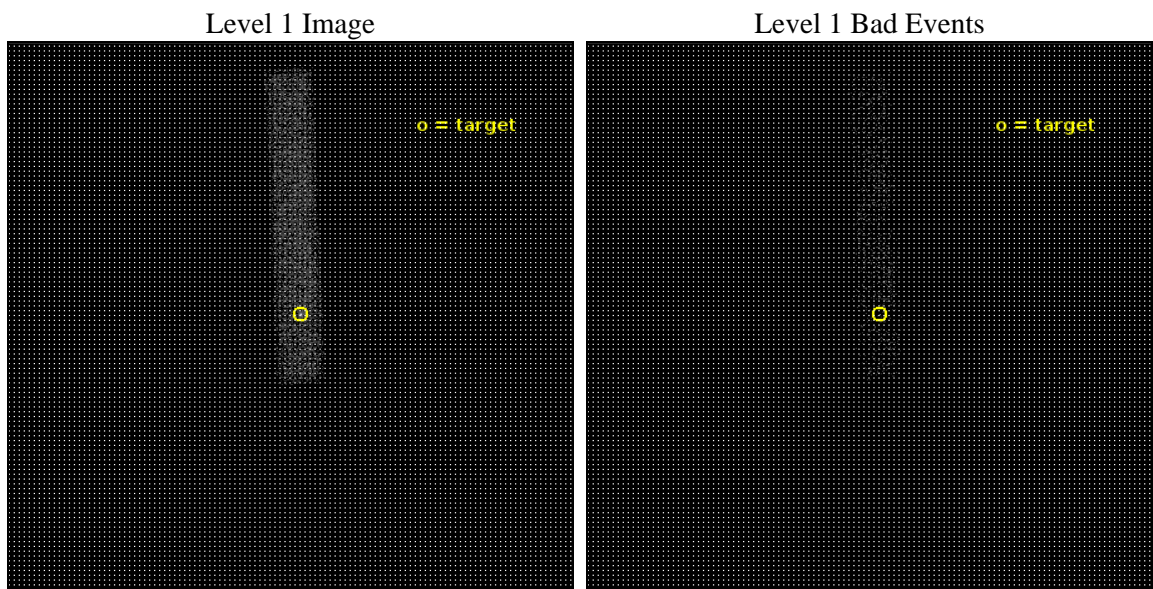
seq_num	703376	Sequence number
obs_id	19528	Observation id
title	Surveying the X-Ray Properties of Candidate Subparsec Scale SMBH Binaries	Proposal title
observer	Daniel Stern	Principal investigator
object	2MASSi J0729087+400836	Source name
dtcycle	0	
cycle	P	events from which exps? Prim/Second/Both
ra_targ	112.28625	Observer's specified target RA [deg]
dec_targ	40.143333	Observer's specified target Dec [deg]
ra_nom	112.29224359954	Nominal RA [deg]
dec_nom	40.138305048857	Nominal Dec [deg]
roll_nom	267.69676912784	Nominal Roll [deg]
revision	1	Processing version of data
ontime	8352.2744888067	Sum of GTIs [s]
livetime	7575.072092152	Livetime [s]
ontime7	8352.2744888067	Sum of GTIs [s]
l2events	6927	Number of level 2 events



2 OBI

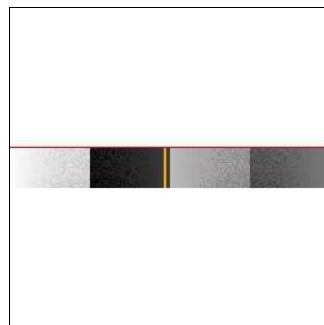
2.1 OBI

2.1.1 Images



2.1.2 Bias

Chip 7



2.1.3 Parameters

obi_num	0	Obi number	sched_exp_time	8282.891000	[s] Scheduled observation exposure time
ascdsver	10.5.4	Processing system revision	ontime	8352.2744888067	Sum of GTIs [s]
caldsver	4.7.3	 	ontime7	8352.2744888067	Sum of GTIs [s]
date	2017-04-29T02:25:08	Date and time of file creation	l1events	12142	Number of level 1 events
revision	1	Processing version of data			

2.1.4 Events

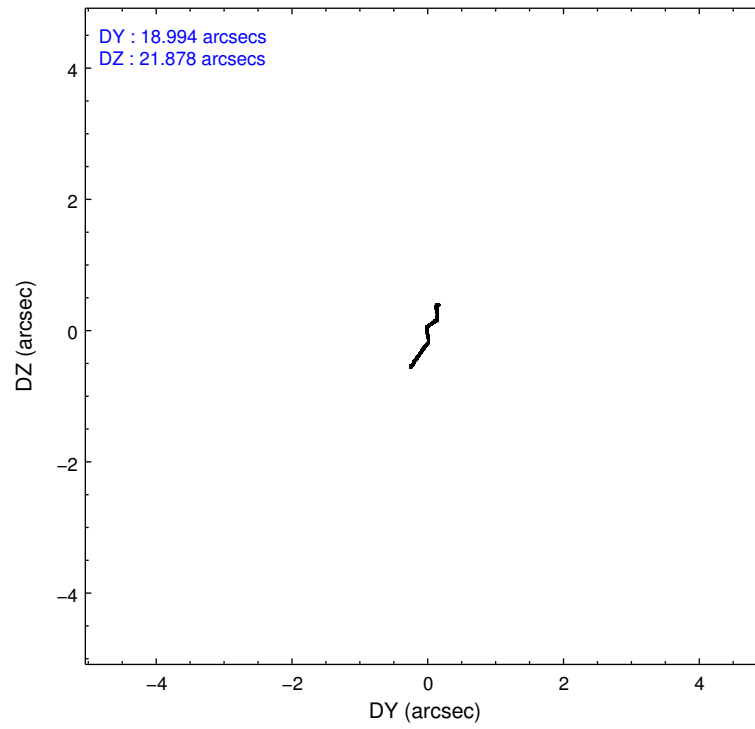
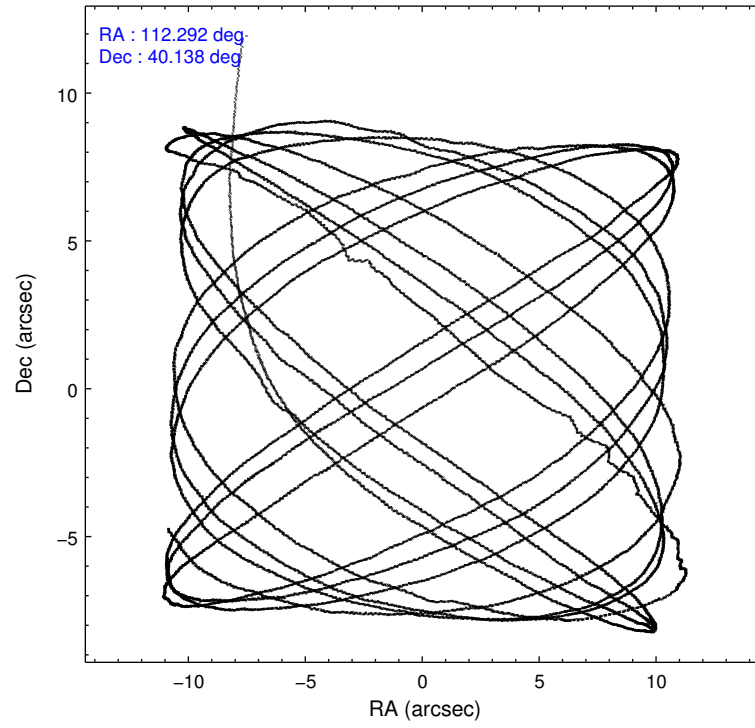
	ccd 7
level 1 events	12142
rejected events	5021
rejected %	41%

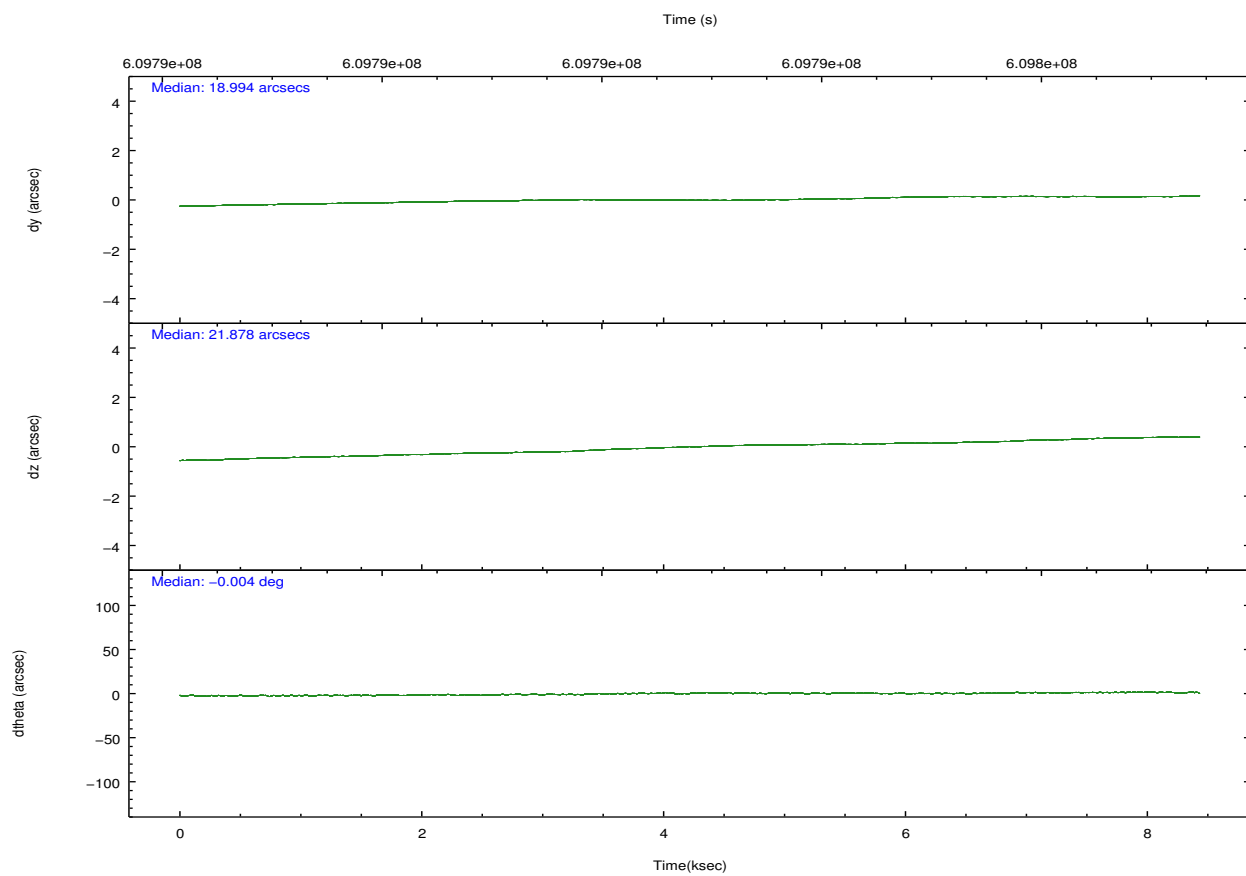
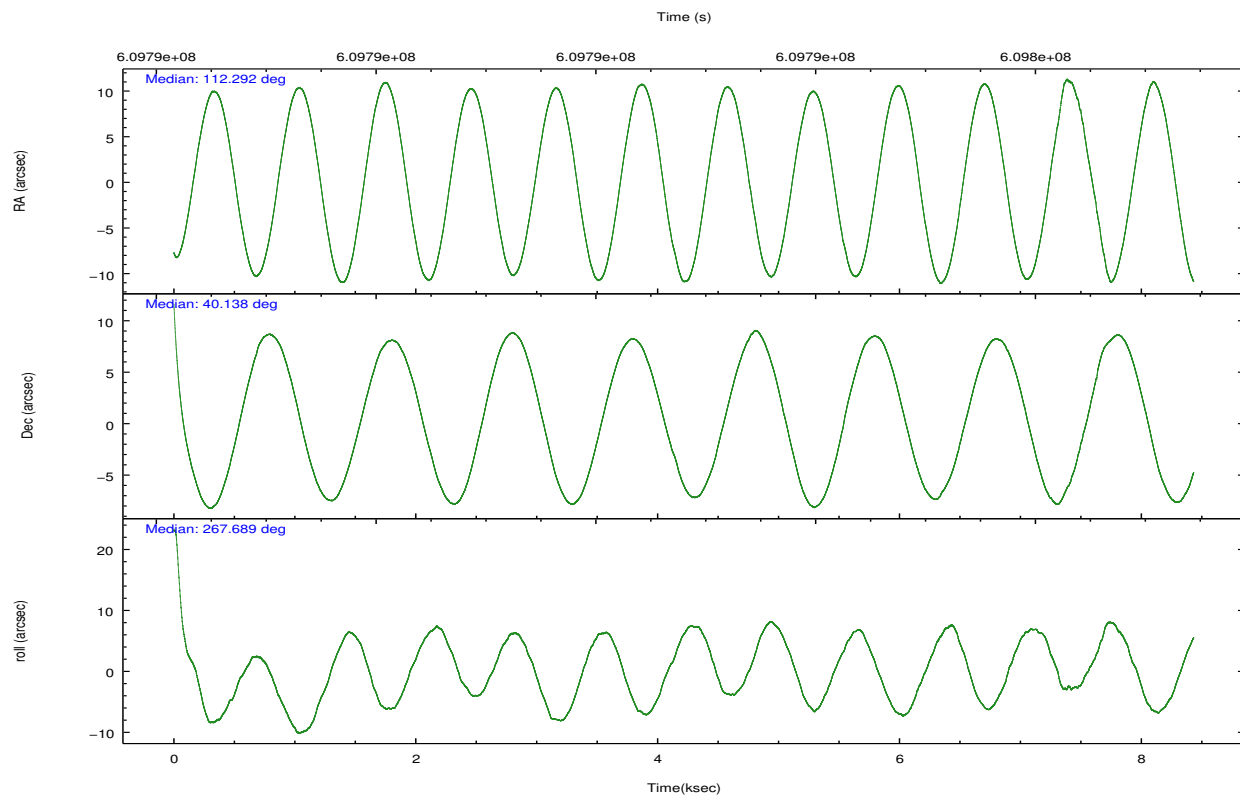
	ccd 7
grade 0 events	1043
	8%
grade 1 events	19
	0%
grade 2 events	1441
	11%
grade 3 events	869
	7%
grade 4 events	866
	7%
grade 5 events	1063
	8%
grade 6 events	2903
	23%
grade 7 events	3938
	32%

2.2 Compared Parameters

Parameter	Planned	Actual	Parameter	Planned	Actual
Instrument	ACIS	ACIS	Obspar format version number	7	7
Detector	ACIS-7	ACIS-7	Obspar file type	PREDICTED	ACTUAL
Grating	NONE	NONE	Obspar update status	NONE	UPDATED
Data mode	FAINT	FAINT	Number of optional ACIS chips dropped	0	0
Observation mode	POINTING	POINTING	On-chip summing requested	N	N
[deg] Pointing RA	112.275107	112.2922435995354	Subarray requested	CUSTOM	1/8
[deg] Pointing Dec	40.162498	40.13830504885661	Subarray start row	449	449
[deg] Pointing Roll	267.551166	267.6967691278438	Subarray row count	128	128
[mm] SIM focus pos	-0.684267	-0.6828225247311905	Alternating exposures requested	N	N
[mm] SIM defocus	0	0.001444936568705701	[s] Primary exposure time	0.000000	0.4
[mm] SIM translation stage pos	-190.132523	-190.1400660498719			
[mm] SIM translation stage offset	0	0.00754346686406393			
[s] Observation start time (MET)	609788730.184000	609787493.0781699			
Observation start date	2017-04-28T17:44:21	2017-04-28T17:24:53			
[s] Observation end time (MET)	609797013.184000	609797237.7537301			
Observation end date	2017-04-28T20:02:24	2017-04-28T20:07:17			
Read mode	TIMED	TIMED			

2.3 Aspect



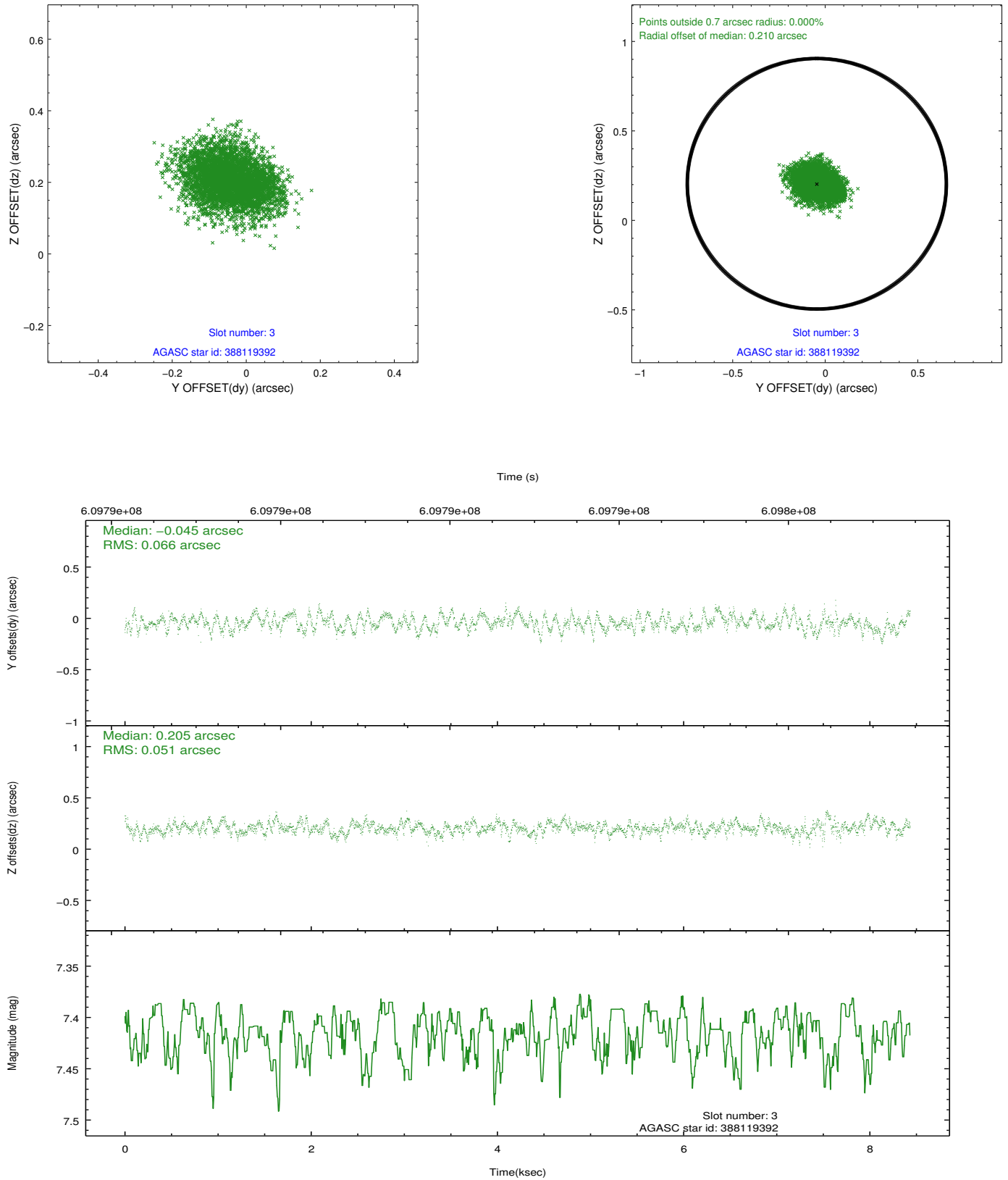


Slot Statistics

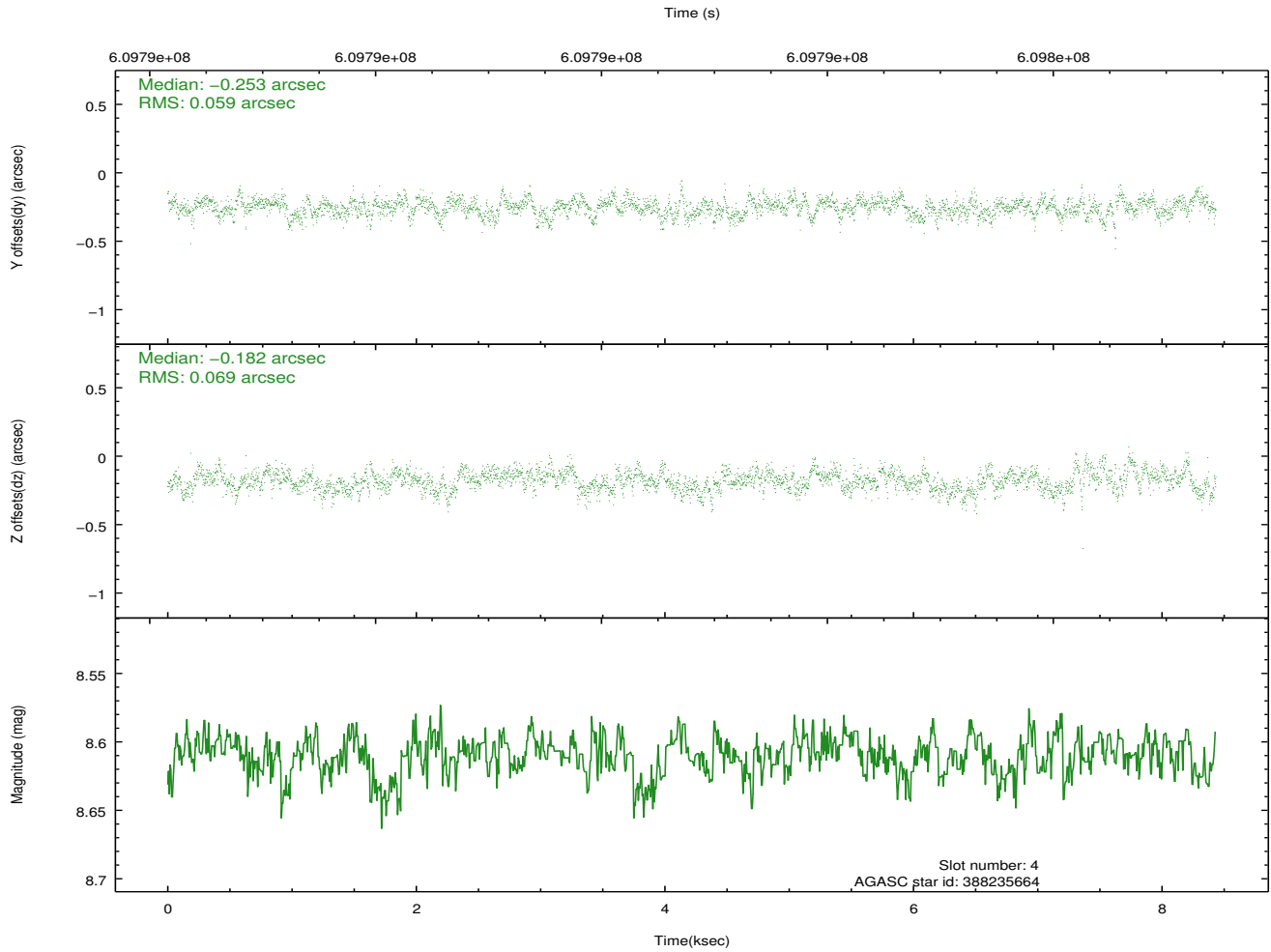
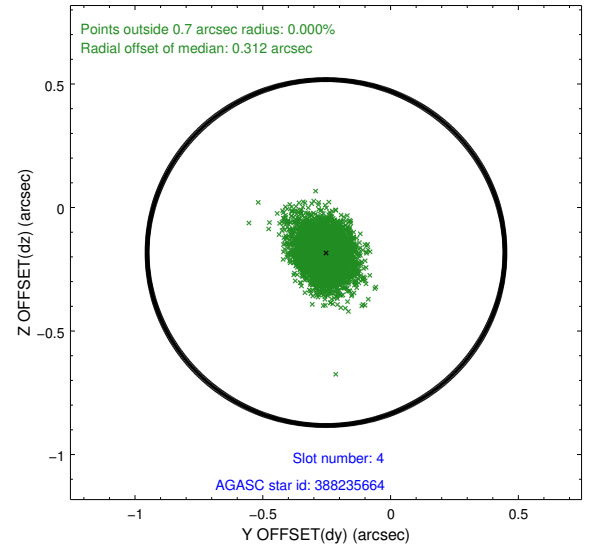
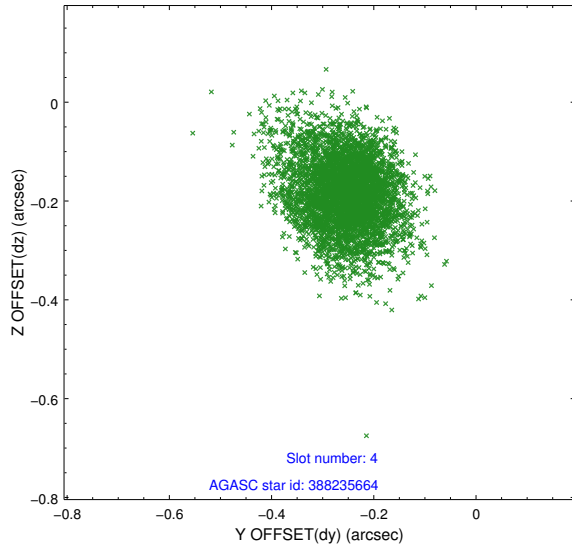
slot	status	used	id	mag	n_pts	med_dy	med_dz	dr1	dr2	ra	dec	mean_y	mean_z
0	FID		ACIS-S-2	7.04	2057	-0.218	-0.157	0.017	0.026	0.000000	0.000000	-772.29	-1743.54
1	FID		ACIS-S-4	7.14	2057	0.516	0.147	0.008	0.012	0.000000	0.000000	2141.42	164.55
2	FID		ACIS-S-5	7.14	2057	-0.329	0.019	0.014	0.022	0.000000	0.000000	-1824.40	158.85
3	GUIDE	used	388119392	7.42	4115	-0.045	0.205	0.090	0.143	112.044138	40.656586	-1750.18	-704.45
4	GUIDE	used	388235664	8.61	4111	-0.253	-0.182	0.095	0.160	113.002407	40.450796	-1130.46	1945.82
5	GUIDE	used	388249064	8.31	4114	-0.208	-0.030	0.085	0.140	112.765282	40.358893	-767.82	1313.45
6	GUIDE	used	388251024	9.10	4110	0.253	-0.232	0.125	0.204	112.514843	39.706952	1609.37	733.93
7	GUIDE	used	388108920	8.92	4113	0.249	0.240	0.097	0.159	111.667603	40.757044	-2072.14	-1746.64

2.4 Star Slots

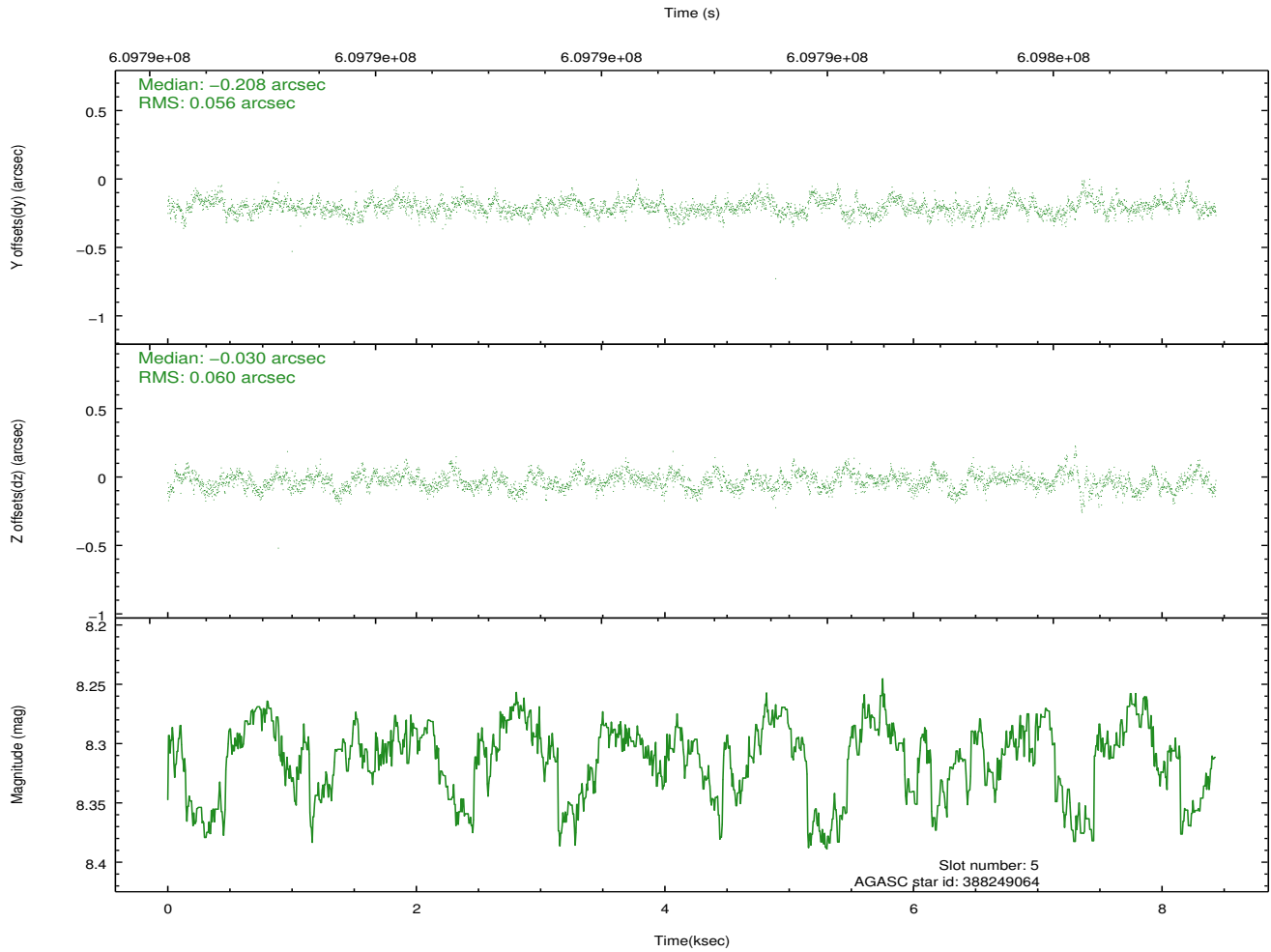
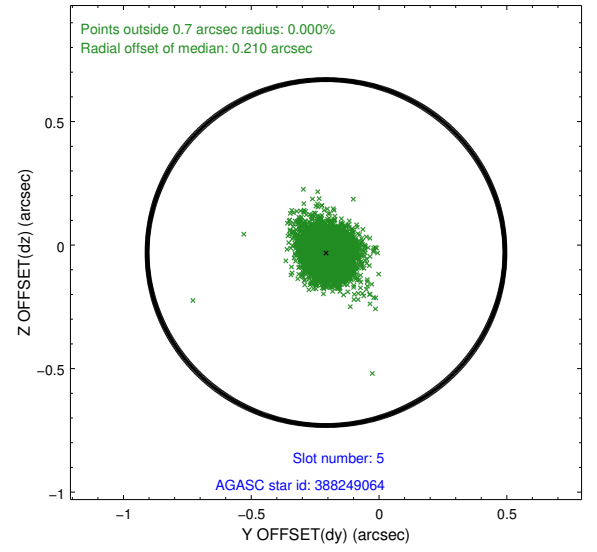
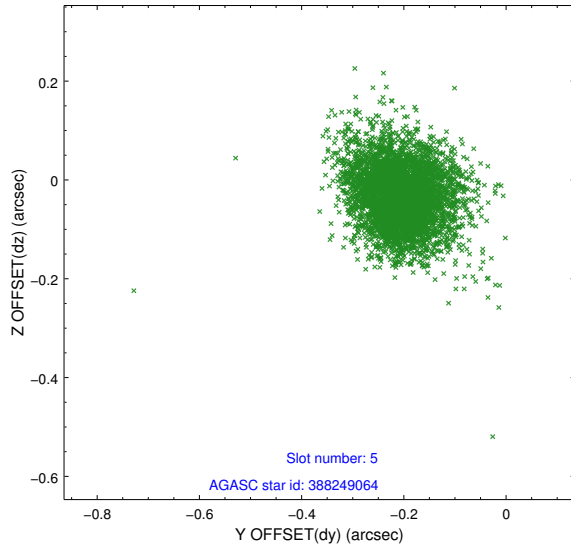
2.4.1 Slot 3



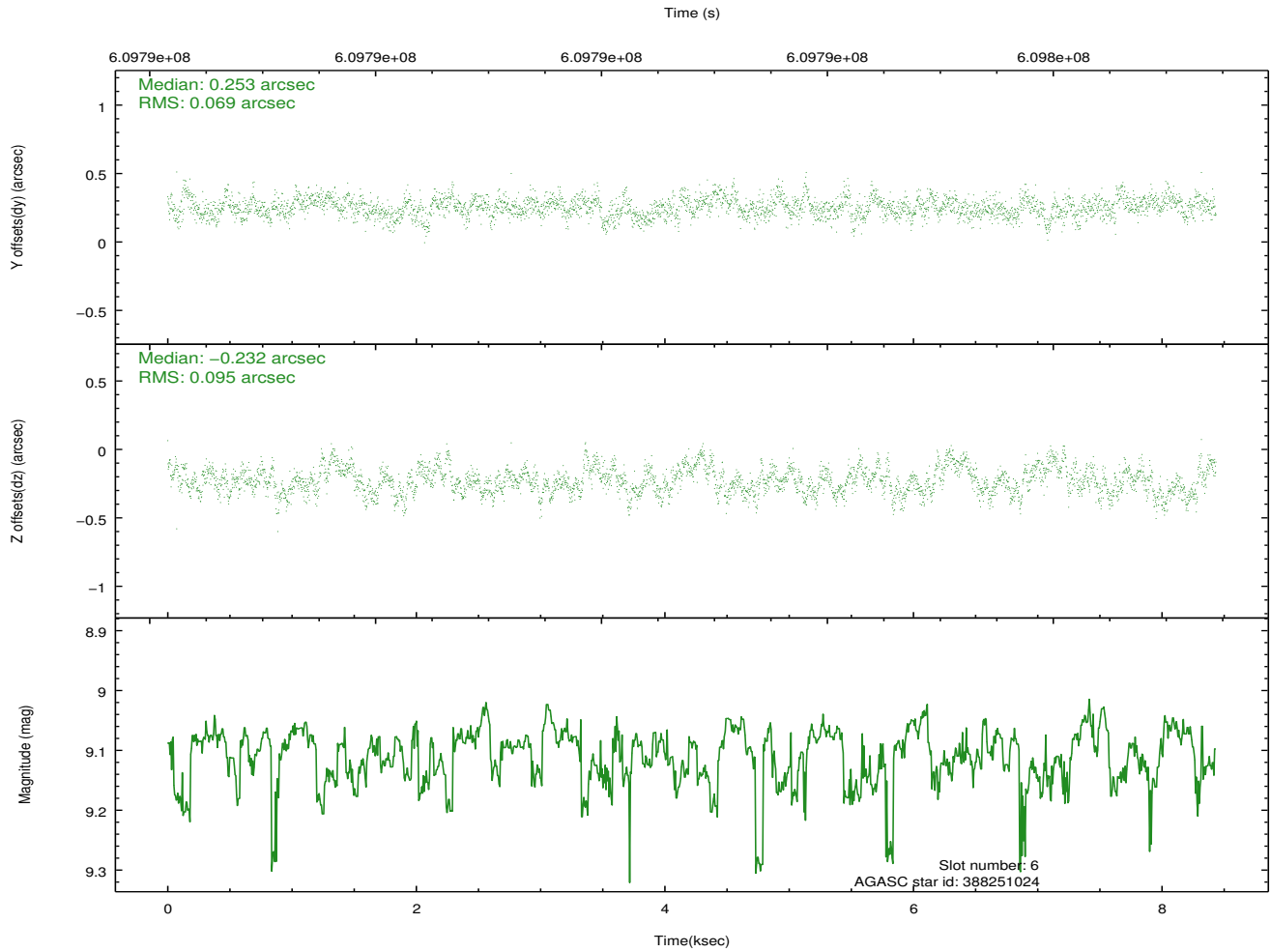
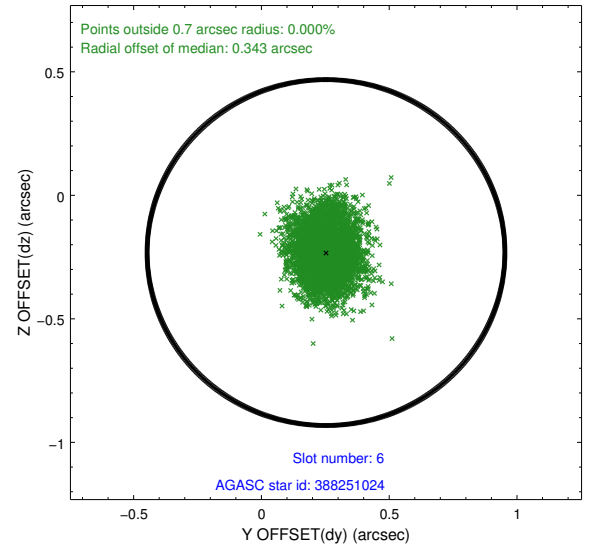
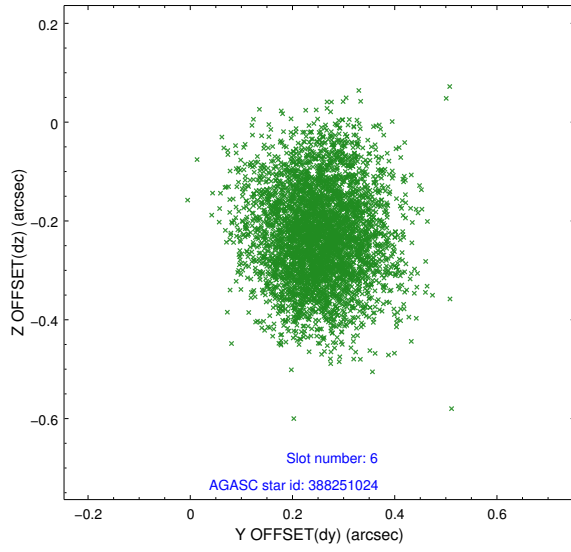
2.4.2 Slot 4



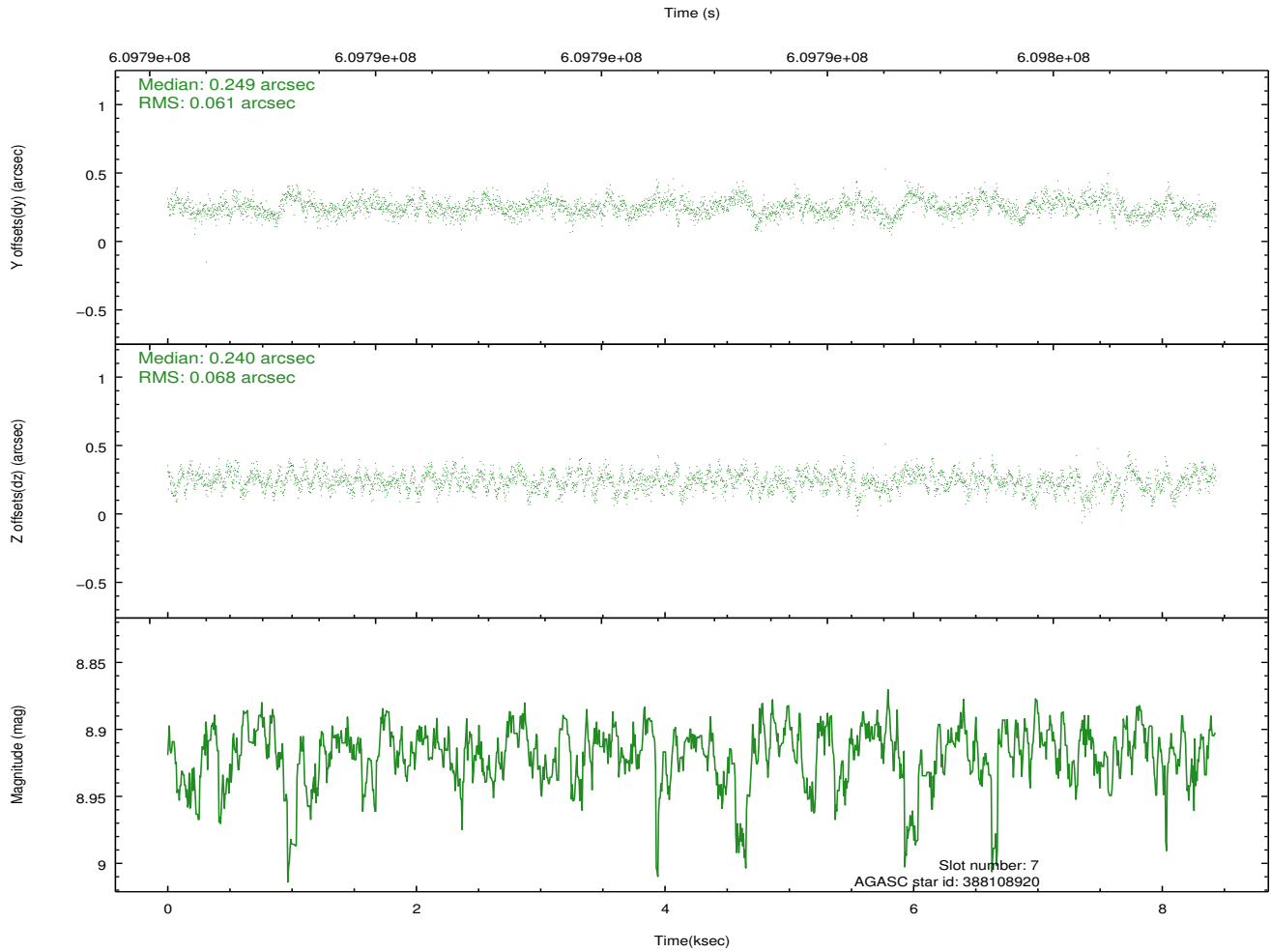
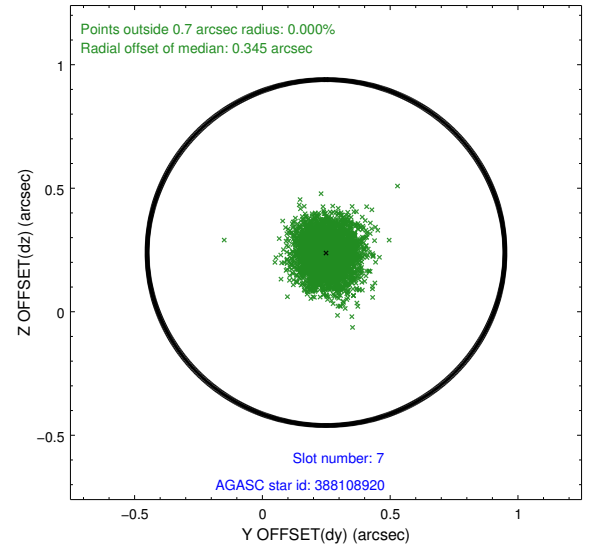
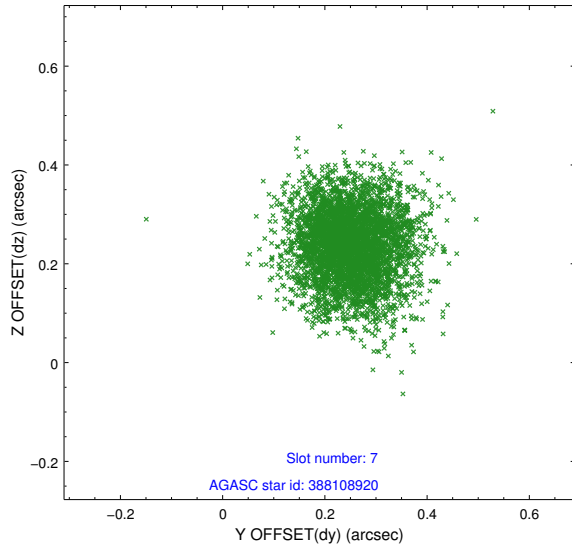
2.4.3 Slot 5



2.4.4 Slot 6

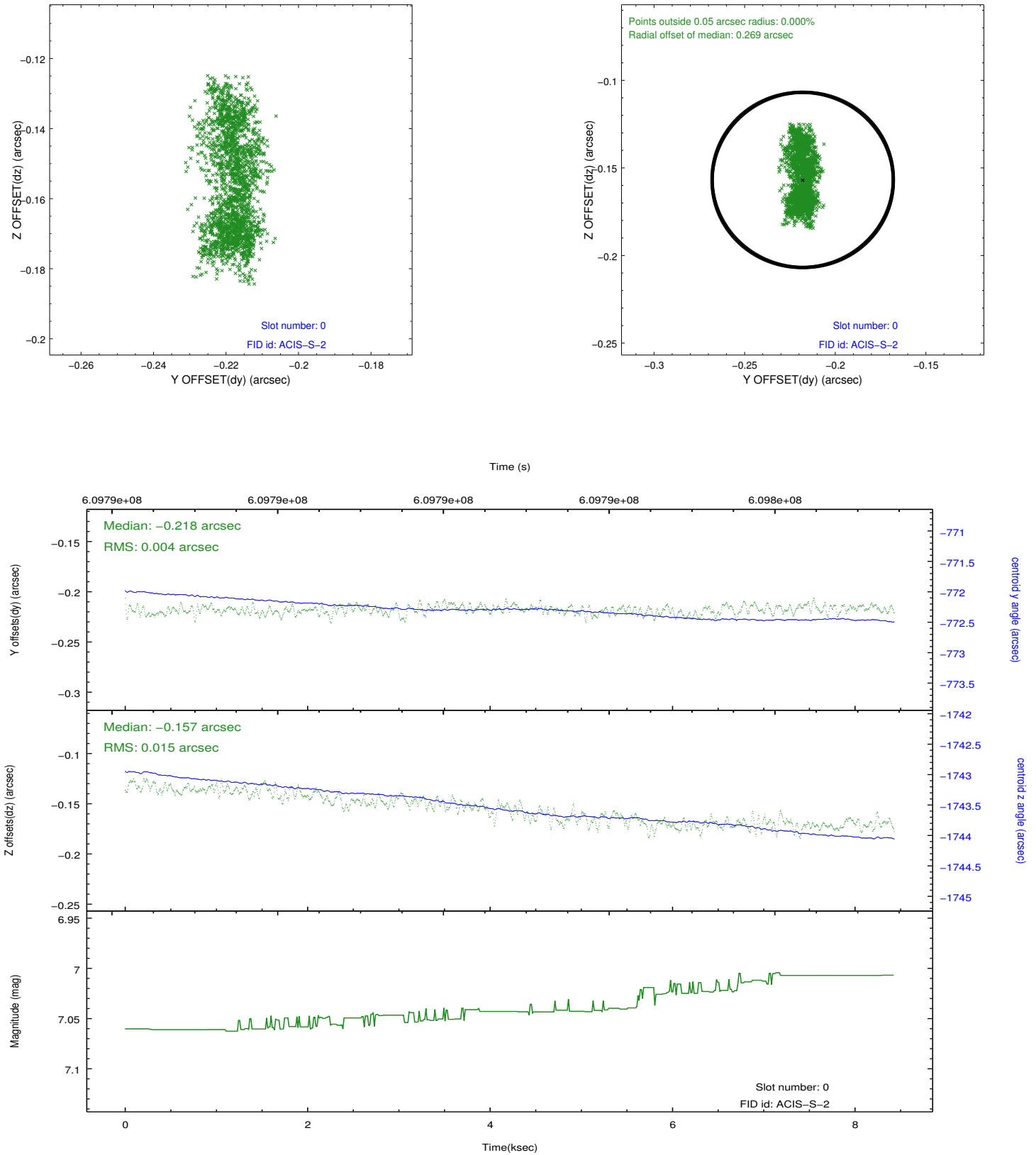


2.4.5 Slot 7

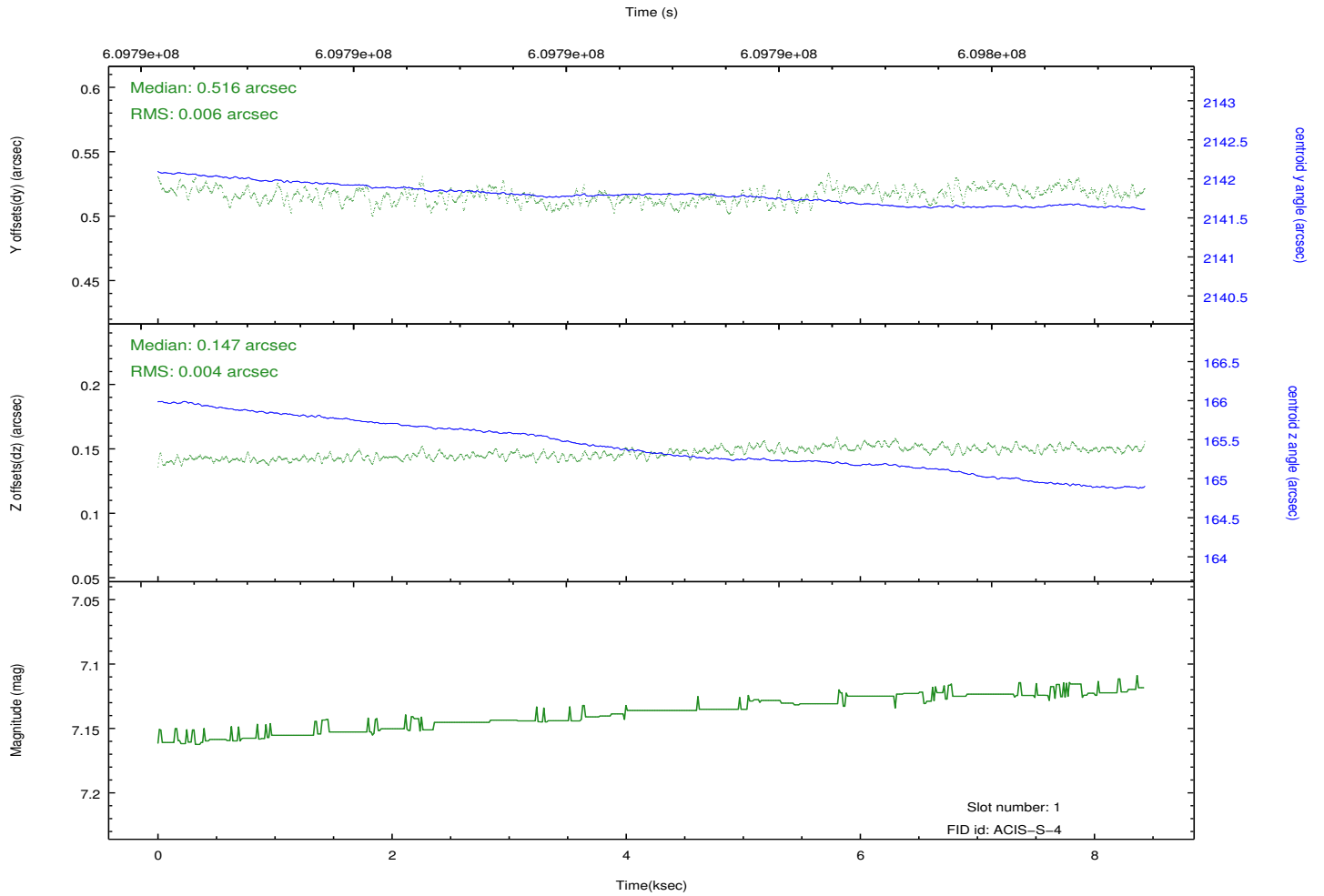
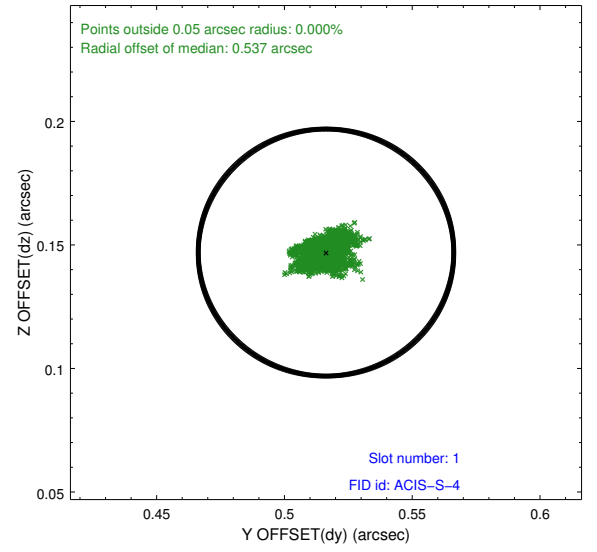
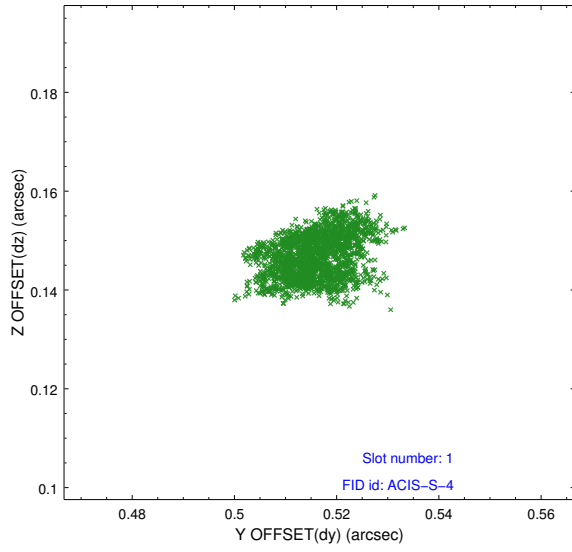


2.5 FID Slots

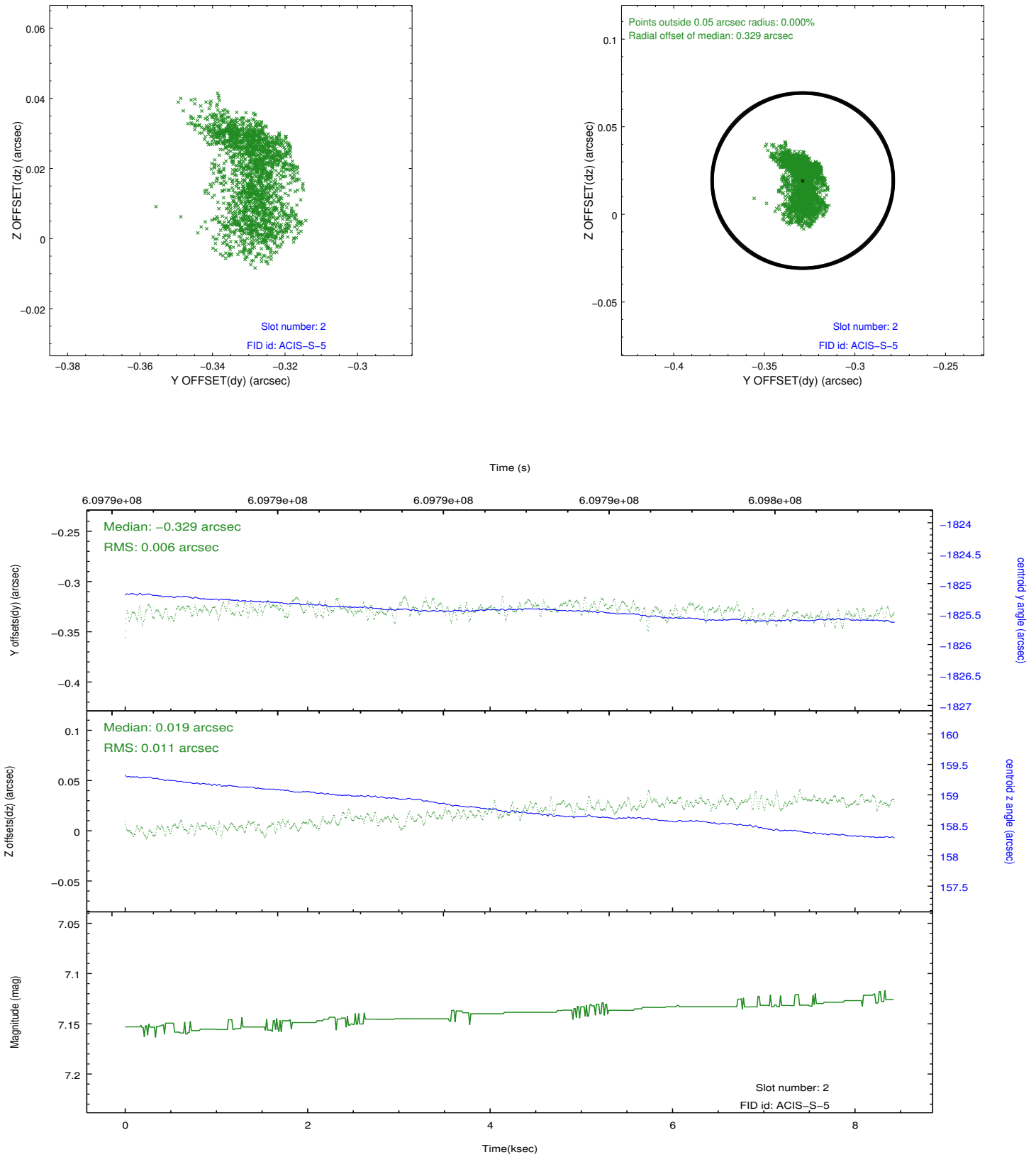
2.5.1 Slot 0



2.5.2 Slot 1



2.5.3 Slot 2



A Summary

A.1 Status

V&V Scientist	Beth Sundheim
V&V Date (YYYY-MM-DD)	2017.04.30
V&V Edition	1
V&V Disposition and Status	OK
V&V Charge Time	8.3522744888067

A.2 Comments