

# V&V Reference Report

## L2 ASCDS Version : 10.5.2

Observation 19479 - L2 Version 1  
Chandra X-Ray Center

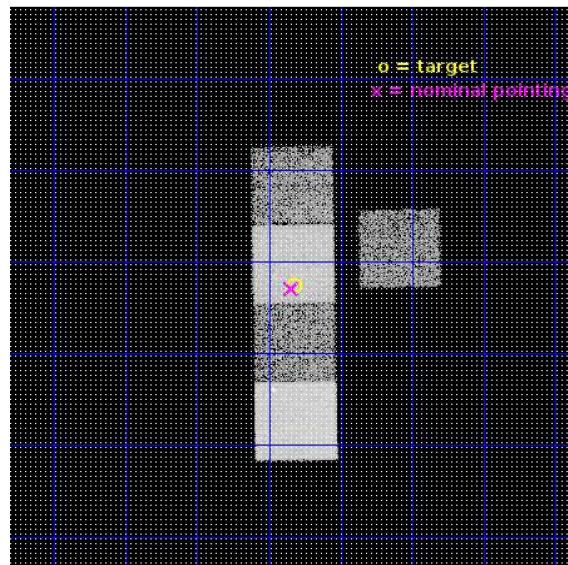
L2 Processing Date : Mar 30 2017

## Contents

<b>1</b>	<b>Front</b>	<b>2</b>
<b>2</b>	<b>OBI</b>	<b>3</b>
2.1	OBI . . . . .	3
2.1.1	Images . . . . .	3
2.1.2	Bias . . . . .	3
2.1.3	Parameters . . . . .	4
2.1.4	Events . . . . .	4
2.2	Compared Parameters . . . . .	5
2.3	Aspect . . . . .	6
2.4	Star Slots . . . . .	9
2.4.1	Slot 3 . . . . .	9
2.4.2	Slot 4 . . . . .	10
2.4.3	Slot 5 . . . . .	11
2.4.4	Slot 6 . . . . .	12
2.4.5	Slot 7 . . . . .	13
2.5	FID Slots . . . . .	14
2.5.1	Slot 0 . . . . .	14
2.5.2	Slot 1 . . . . .	15
2.5.3	Slot 2 . . . . .	16
<b>A</b>	<b>Summary</b>	<b>17</b>
A.1	Status . . . . .	17
A.2	Comments . . . . .	17

# 1 Front

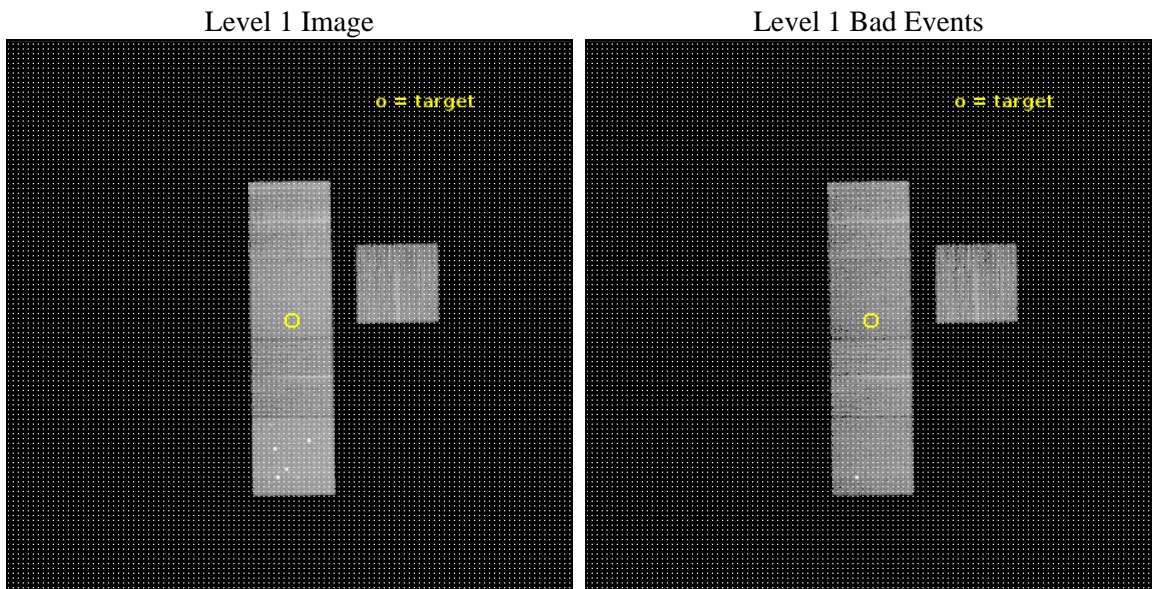
seq_num	703327	Sequence number
obs_id	19479	Observation id
title	UNDERSTANDING THE ROLE OF AGN IN TRANSITIONING GALAXI	Proposal tit
observer	Lauranne Lanz	Principal investigator
object	spog2178	Source name
dtcycle	0	&#160
cycle	P	events from which exps? Prim/Second/Both
ra_targ	149.45625	Observer's specified target RA [deg]
dec_targ	-0.210889	Observer's specified target Dec [deg]
ra_nom	149.46096516653	Nominal RA [deg]
dec_nom	-0.21578973633794	Nominal Dec [deg]
roll_nom	269.15668088275	Nominal Roll [deg]
revision	1	Processing version of data
ontime	10042.609714031	Sum of GTIs [s]
livetime	9911.3956248557	Livetime [s]
ontime3	10039.345523834	Sum of GTIs [s]
ontime5	10042.568674088	Sum of GTIs [s]
ontime6	10042.527634025	Sum of GTIs [s]
ontime7	10042.609714031	Sum of GTIs [s]
ontime8	10039.304503918	Sum of GTIs [s]
l2events	112376	Number of level 2 events



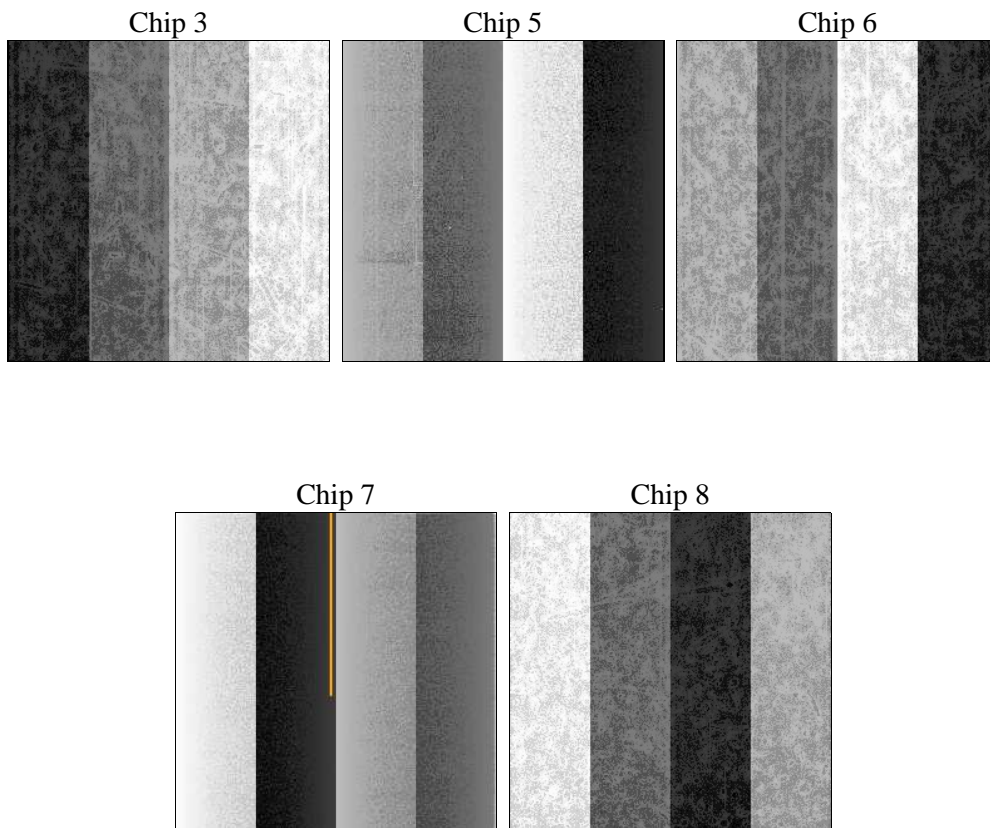
## 2 OBI

### 2.1 OBI

#### 2.1.1 Images



#### 2.1.2 Bias



### 2.1.3 Parameters

obi_num	0	Obi number	sched_exp_time	10000.000000	[s] Scheduled observation exposure time
ascdsver	10.5.2	Processing system revision	ontime	10042.609714031	Sum of GTIs [s]
caldbver	4.7.3	&#160	ontime3	10039.345523834	Sum of GTIs [s]
date	2017-03-30T15:47:14	Date and time of file creation	ontime5	10042.568674088	Sum of GTIs [s]
revision	1	Processing version of data	ontime6	10042.527634025	Sum of GTIs [s]
			ontime7	10042.609714031	Sum of GTIs [s]
			ontime8	10039.304503918	Sum of GTIs [s]
			l1events	450496	Number of level 1 events

### 2.1.4 Events

	ccd 3	ccd 5	ccd 6	ccd 7	ccd 8
level 1 events	70279	124598	70191	92820	92608
rejected events	63077	61866	62067	52935	68347
rejected %	89%	49%	88%	57%	73%

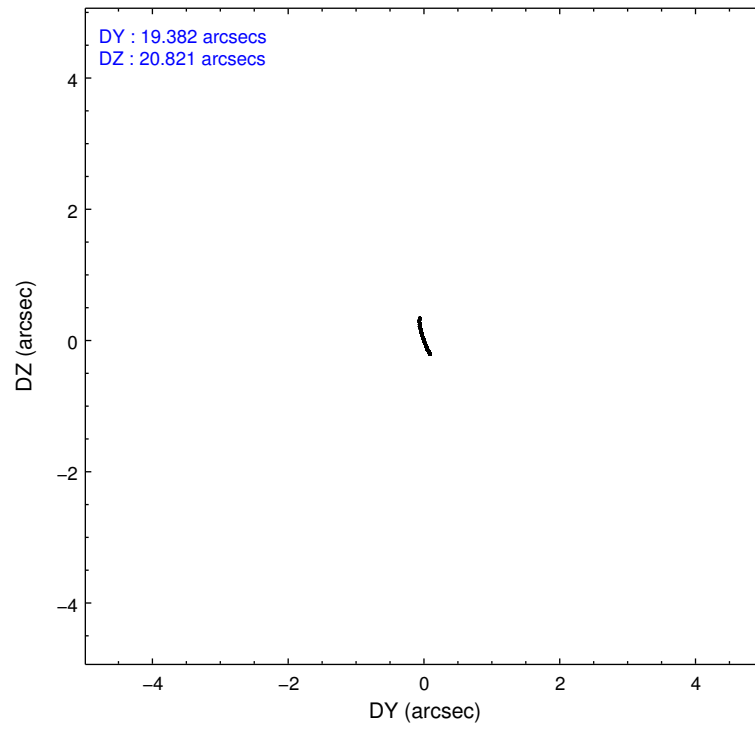
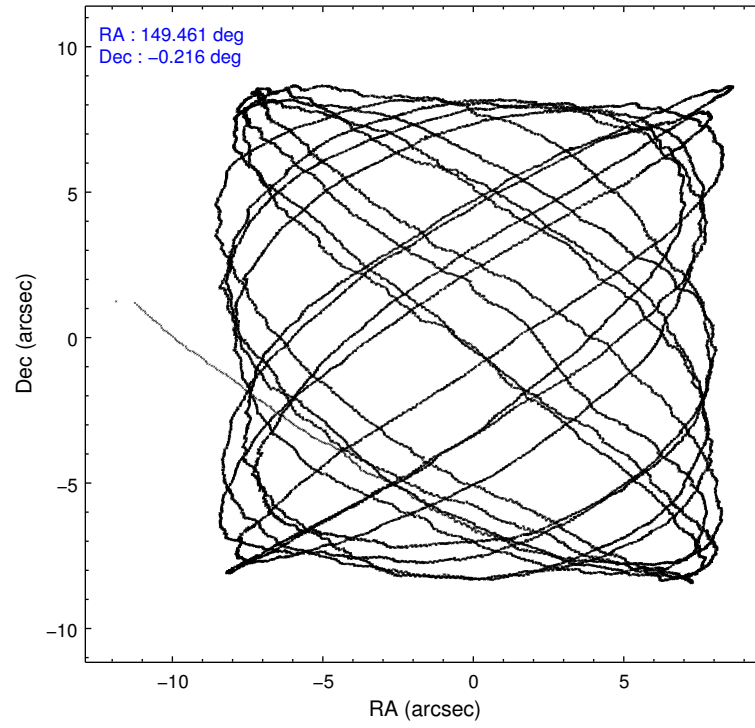
	ccd 3	ccd 5	ccd 6	ccd 7	ccd 8
grade 0 events	2530	11790	2703	3320	6425
	3%	9%	3%	3%	6%
grade 1 events	31	242	30	135	64
	0%	0%	0%	0%	0%
grade 2 events	1582	17444	1862	8510	6256
	2%	14%	2%	9%	6%
grade 3 events	808	1740	806	3196	2412
	1%	1%	1%	3%	2%
grade 4 events	740	1610	832	3159	2270
	1%	1%	1%	3%	2%
grade 5 events	3299	7809	3428	9199	5247
	4%	6%	4%	9%	5%
grade 6 events	1545	30191	1927	21715	6938
	2%	24%	2%	23%	7%
grade 7 events	59744	53772	58603	43586	62996
	85%	43%	83%	46%	68%

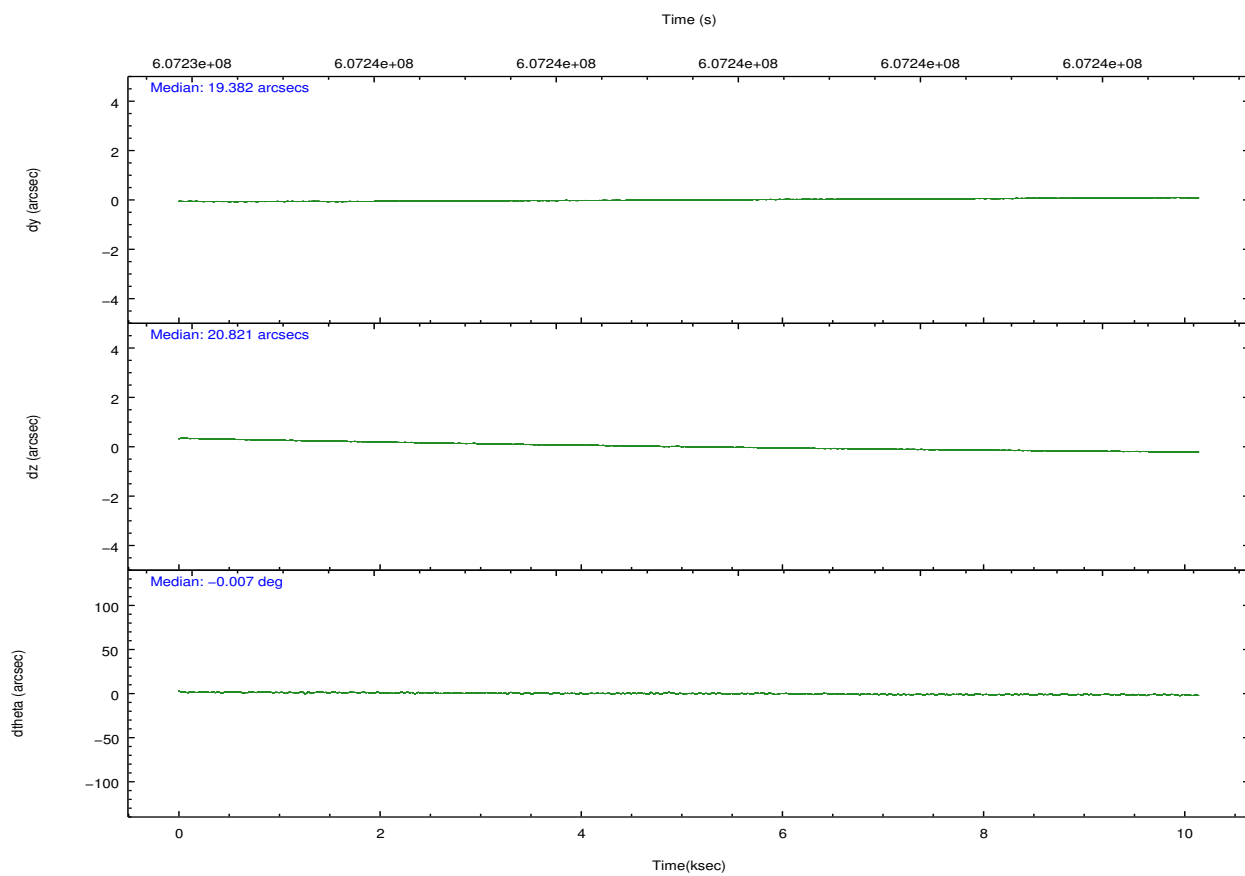
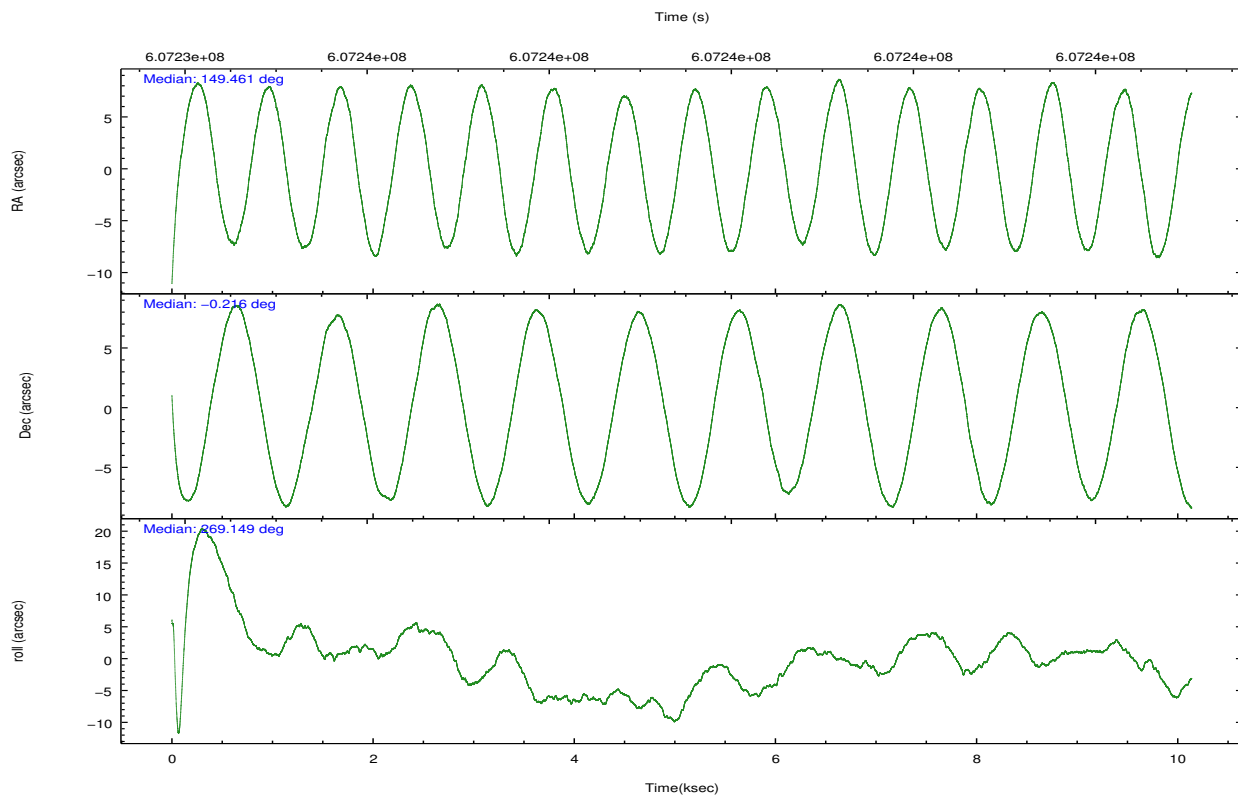


## 2.2 Compared Parameters

Parameter	Planned	Actual	Parameter	Planned	Actual
Instrument	ACIS	ACIS	Obspar format version number	7	7
Detector	ACIS-35678	ACIS-35678	Obspar file type	PREDICTED	ACTUAL
Grating	NONE	NONE	Obspar update status	NONE	UPDATED
Data mode	VFAINT	VFAINT	CCD I0 on	N	N
Observation mode	POINTING	POINTING	CCD I1 on	N	N
[deg] Pointing RA	149.447257	149.4609651665312	CCD I2 on	O1	N
[deg] Pointing Dec	-0.191981	-0.2157897363379435	CCD I3 on	O2	Y
[deg] Pointing Roll	268.999965	269.1566808827532	CCD S0 on	N	N
[mm] SIM focus pos	-0.684267	-0.6828225247311905	CCD S1 on	Y	Y
[mm] SIM defocus	0	0.001444936568705701	CCD S2 on	Y	Y
[mm] SIM translation stage pos	-190.132523	-190.1425803651734	CCD S3 on	Y	Y
[mm] SIM translation stage offset	0	0.01005778216563158	CCD S4 on	Y	Y
[s] Observation start time (MET)	607234532.184000	607233272.87981	CCD S5 on	N	N
Observation start date	2017-03-30T04:14:23	2017-03-30T03:54:32	Number of optional ACIS chips dropped	1	1
[s] Observation end time (MET)	607244532.184000	607245617.98053	On-chip summing requested	N	N
Observation end date	2017-03-30T07:01:03	2017-03-30T07:20:17	Subarray requested	NONE	NONE
Read mode	TIMED	TIMED	Alternating exposures requested	N	N
			[s] Primary exposure time	0.000000	3.1

## 2.3 Aspect



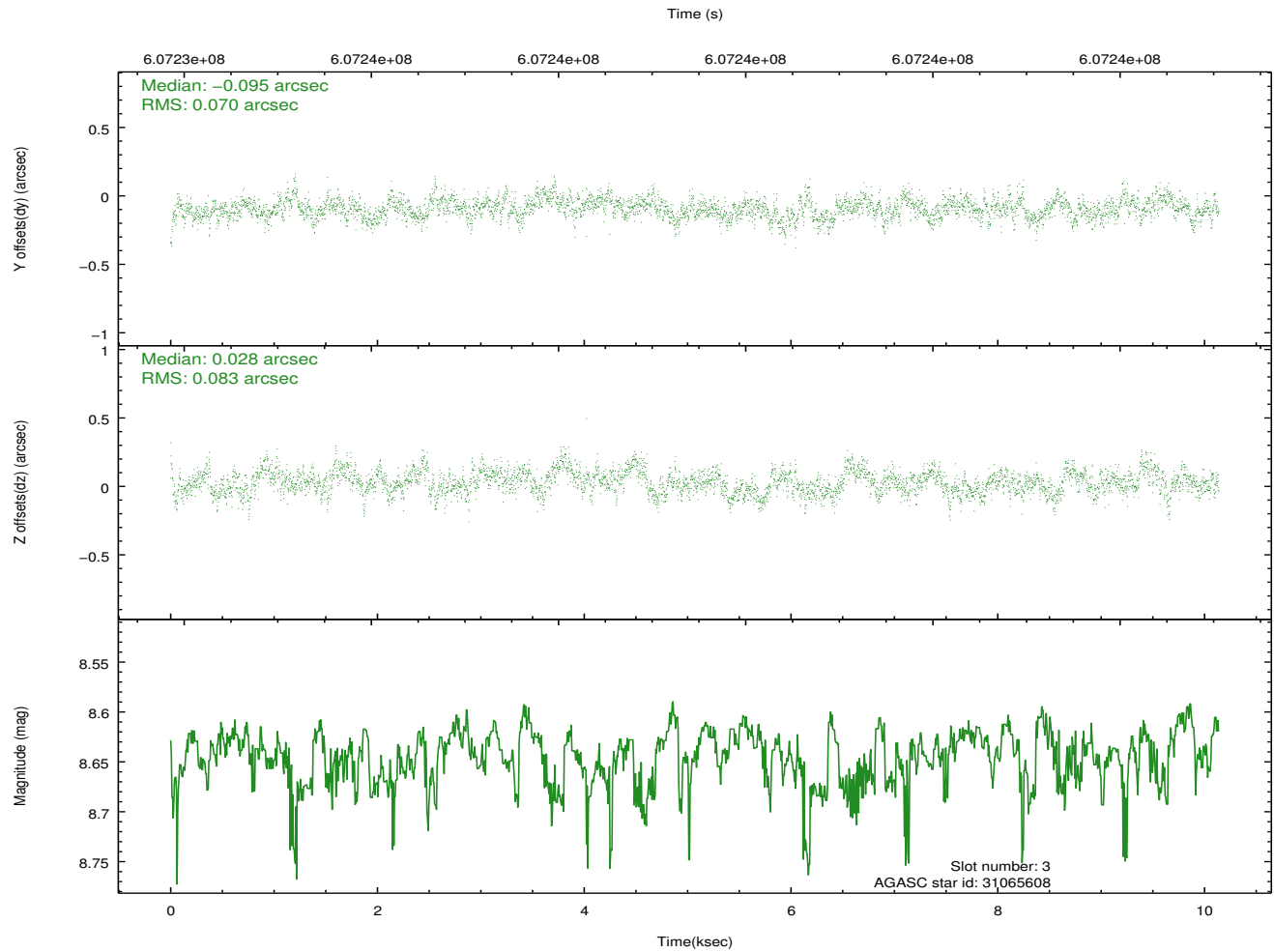
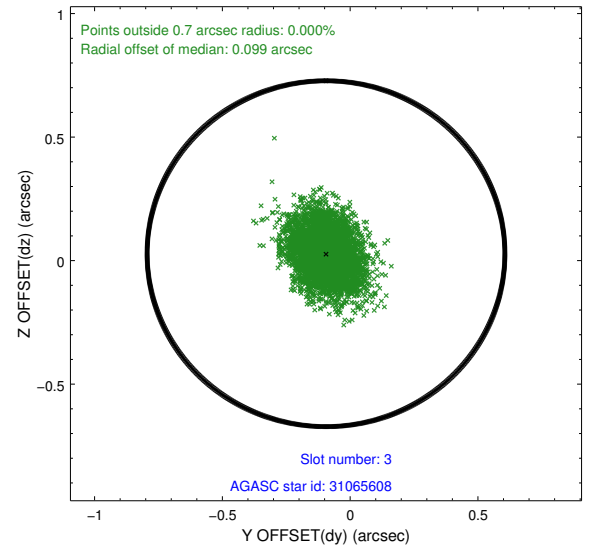
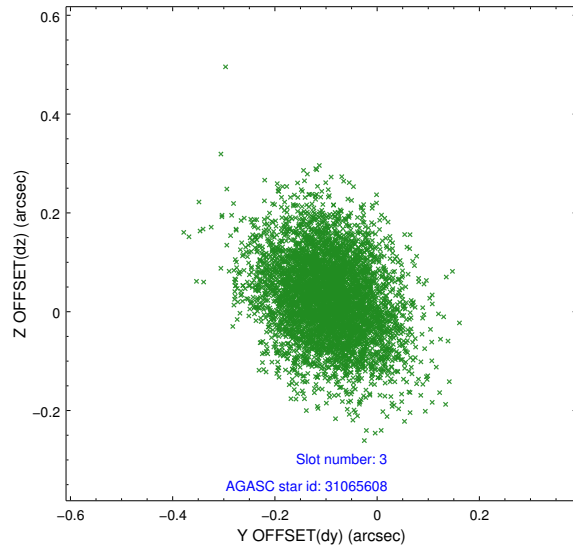


### Slot Statistics

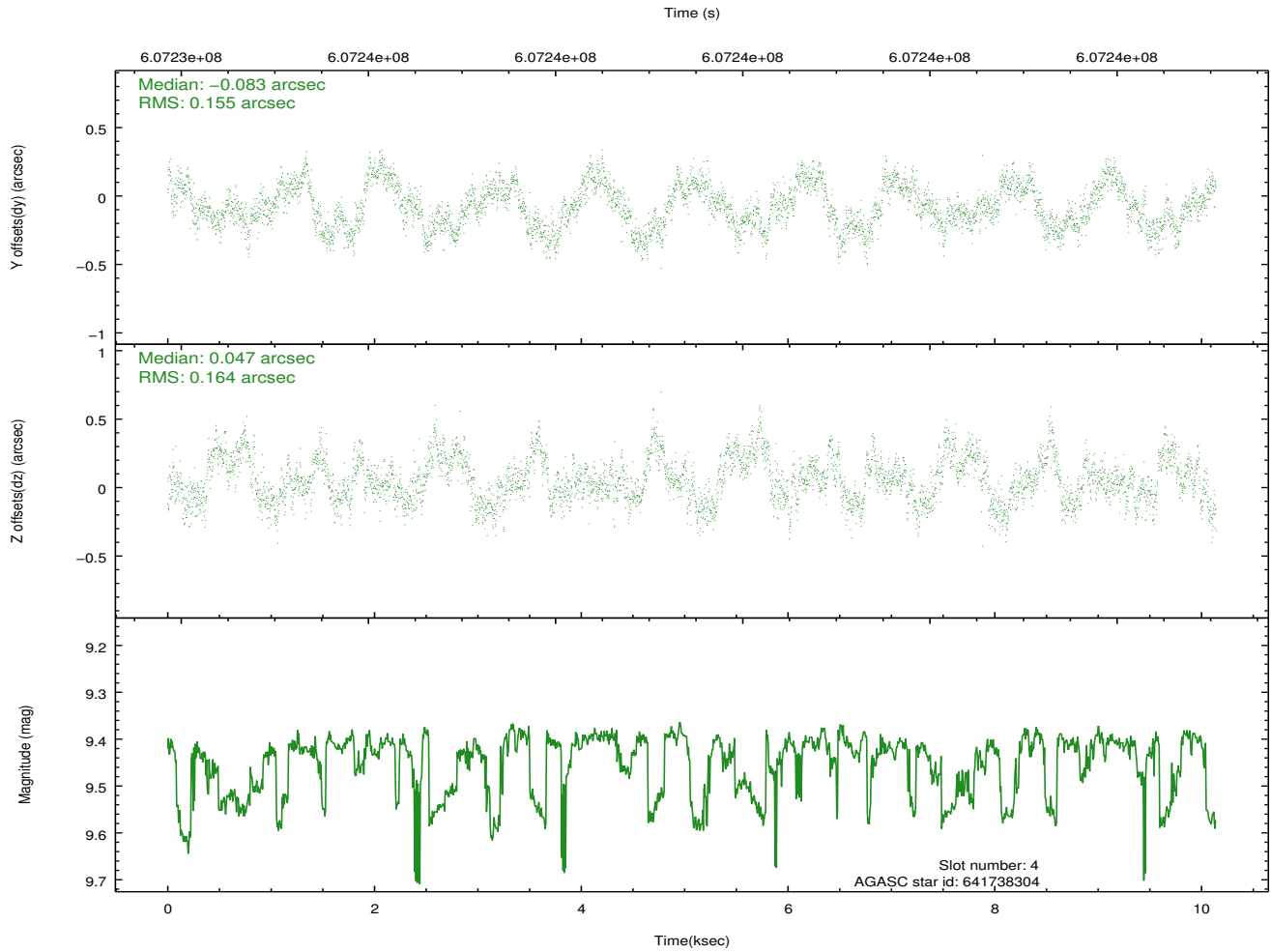
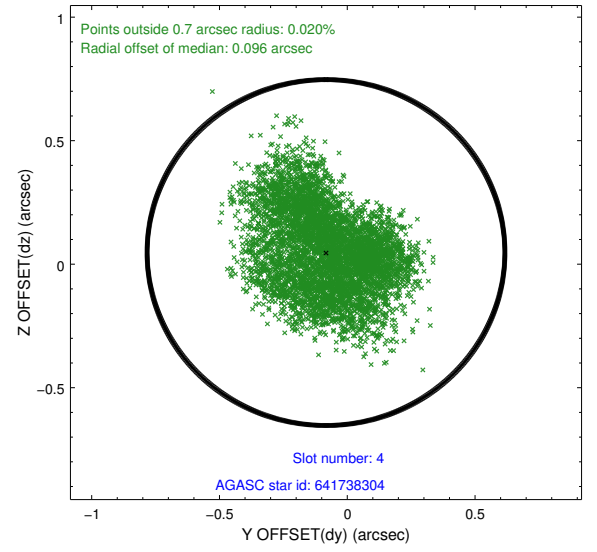
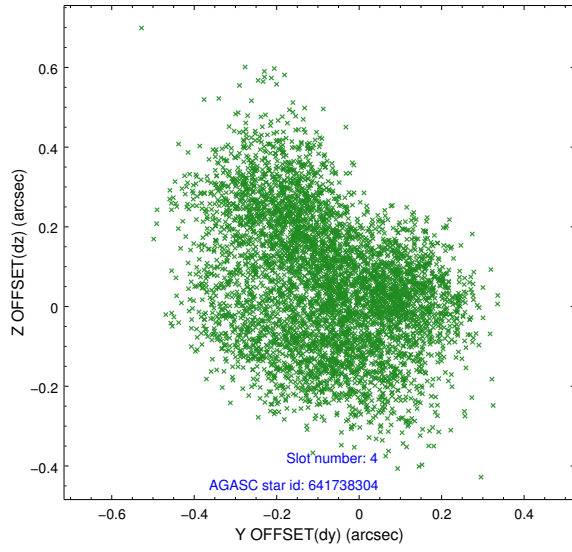
slot	status	used	id	mag	n_pts	med_dy	med_dz	dr1	dr2	ra	dec	mean_y	mean_z
0	FID		ACIS-S-4	7.16	2473	0.388	0.012	0.006	0.011	0.000000	0.000000	2141.26	166.43
1	FID		ACIS-S-5	7.16	2472	-0.469	-0.007	0.005	0.010	0.000000	0.000000	-1825.12	159.78
2	FID		ACIS-S-6	7.31	2472	0.053	0.009	0.007	0.012	0.000000	0.000000	388.59	803.62
3	GUIDE	used	31065608	8.64	4947	-0.095	0.028	0.113	0.189	149.720962	0.356826	-1992.04	950.53
4	GUIDE	used	641738304	9.43	4940	-0.083	0.047	0.246	0.368	148.986055	-0.387521	733.02	-1647.13
5	GUIDE	used	641738760	7.35	4947	-0.090	-0.164	0.142	0.231	149.162992	-0.461463	988.47	-1006.33
6	GUIDE	used	641739800	7.91	4944	0.064	0.061	0.115	0.201	149.353403	-0.102942	-313.68	-343.13
7	GUIDE	used	641740536	9.17	4939	0.210	0.024	0.152	0.239	149.016060	-0.044252	-503.60	-1561.30

## 2.4 Star Slots

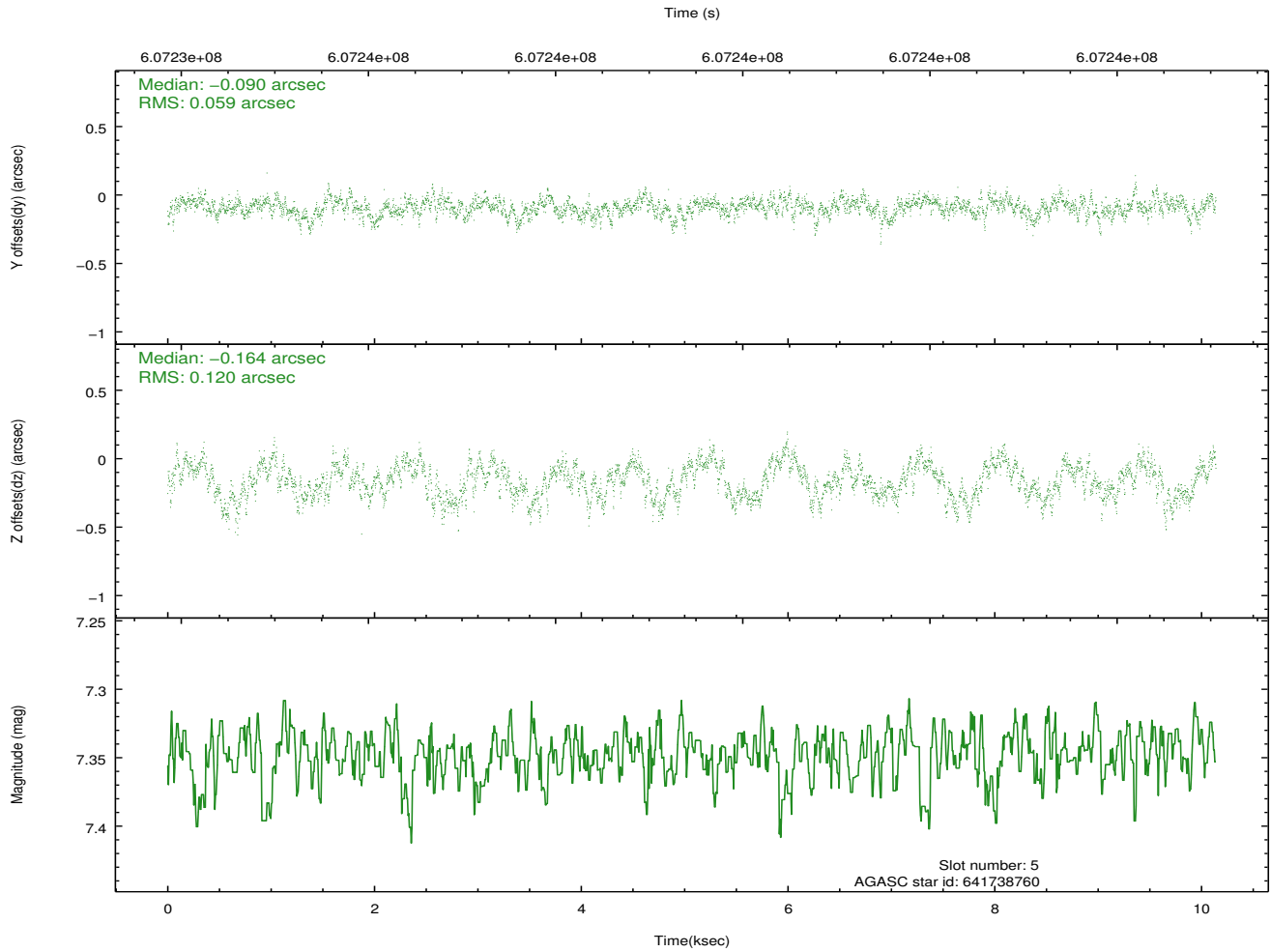
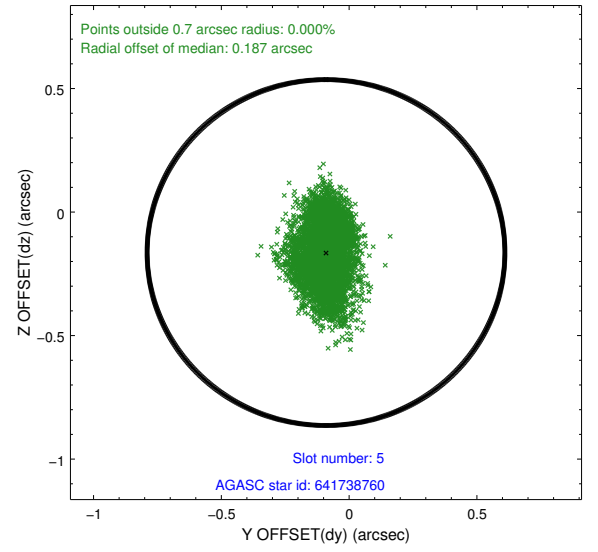
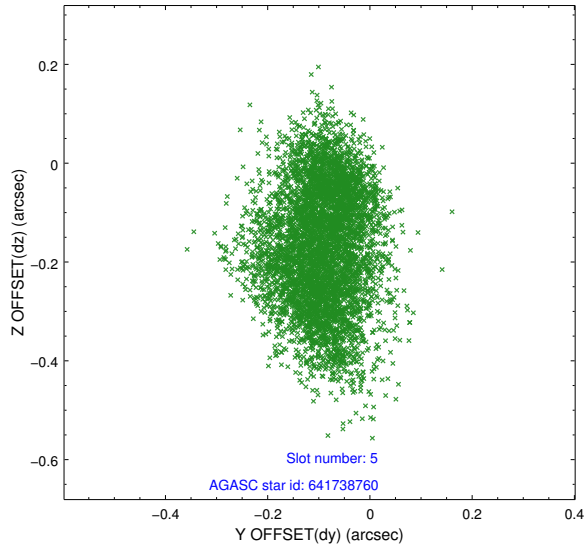
### 2.4.1 Slot 3



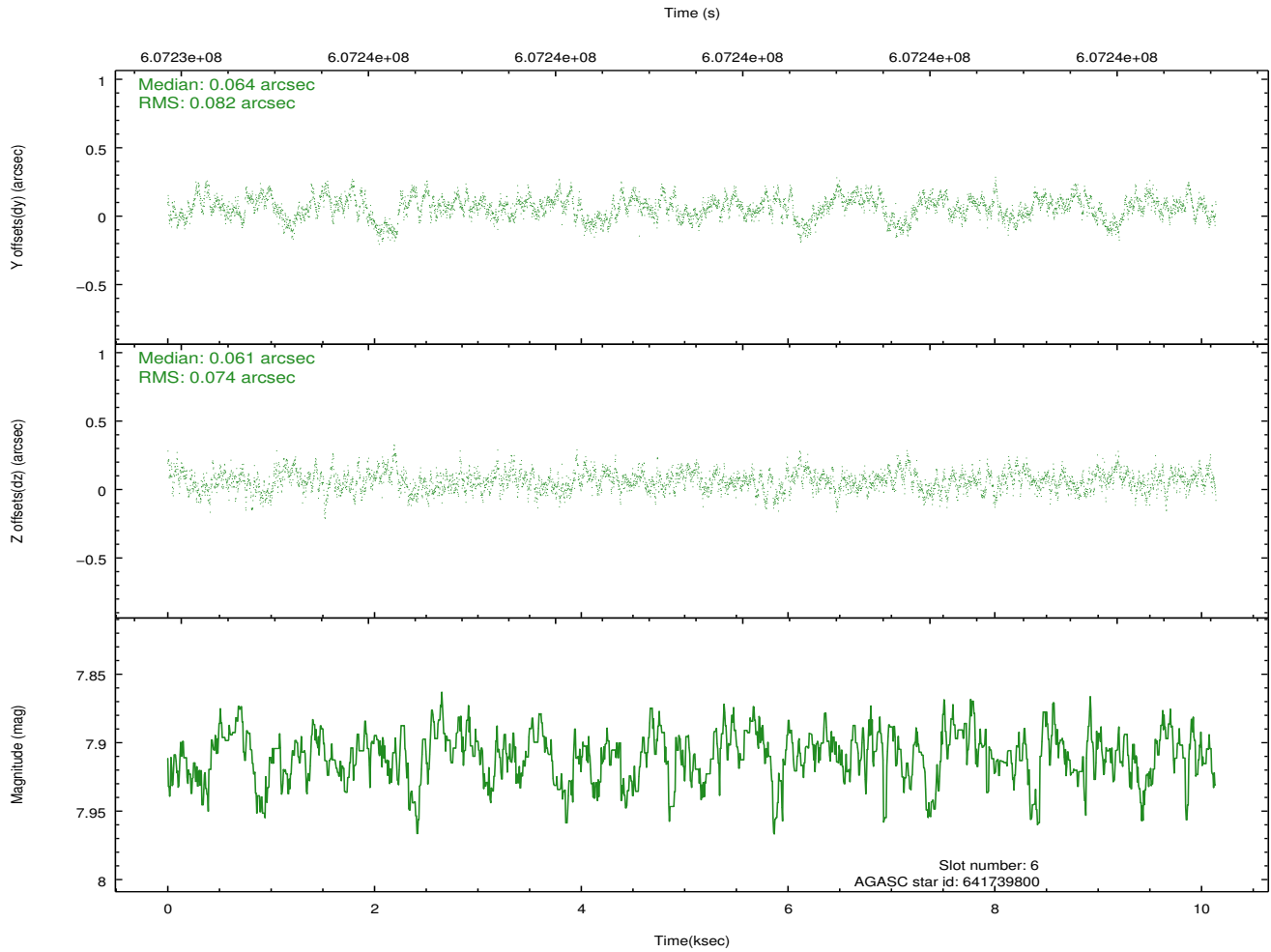
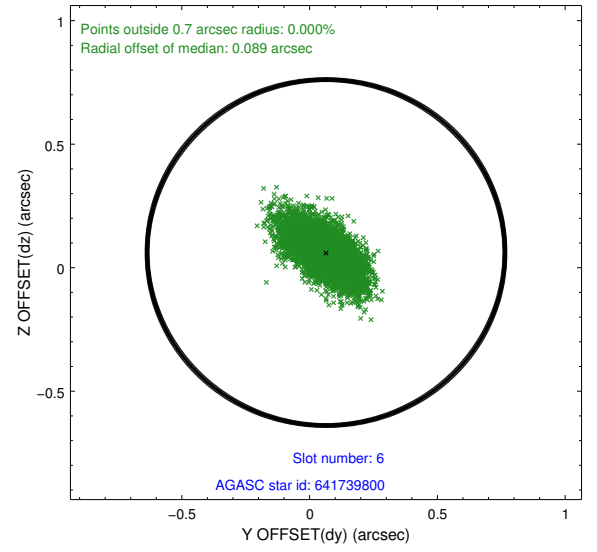
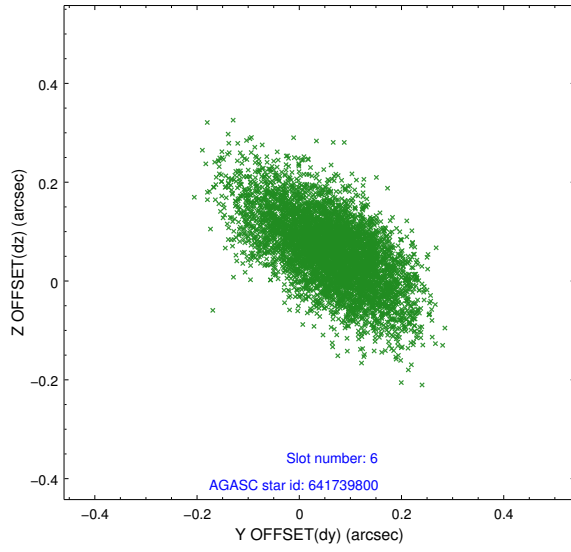
## 2.4.2 Slot 4



### 2.4.3 Slot 5

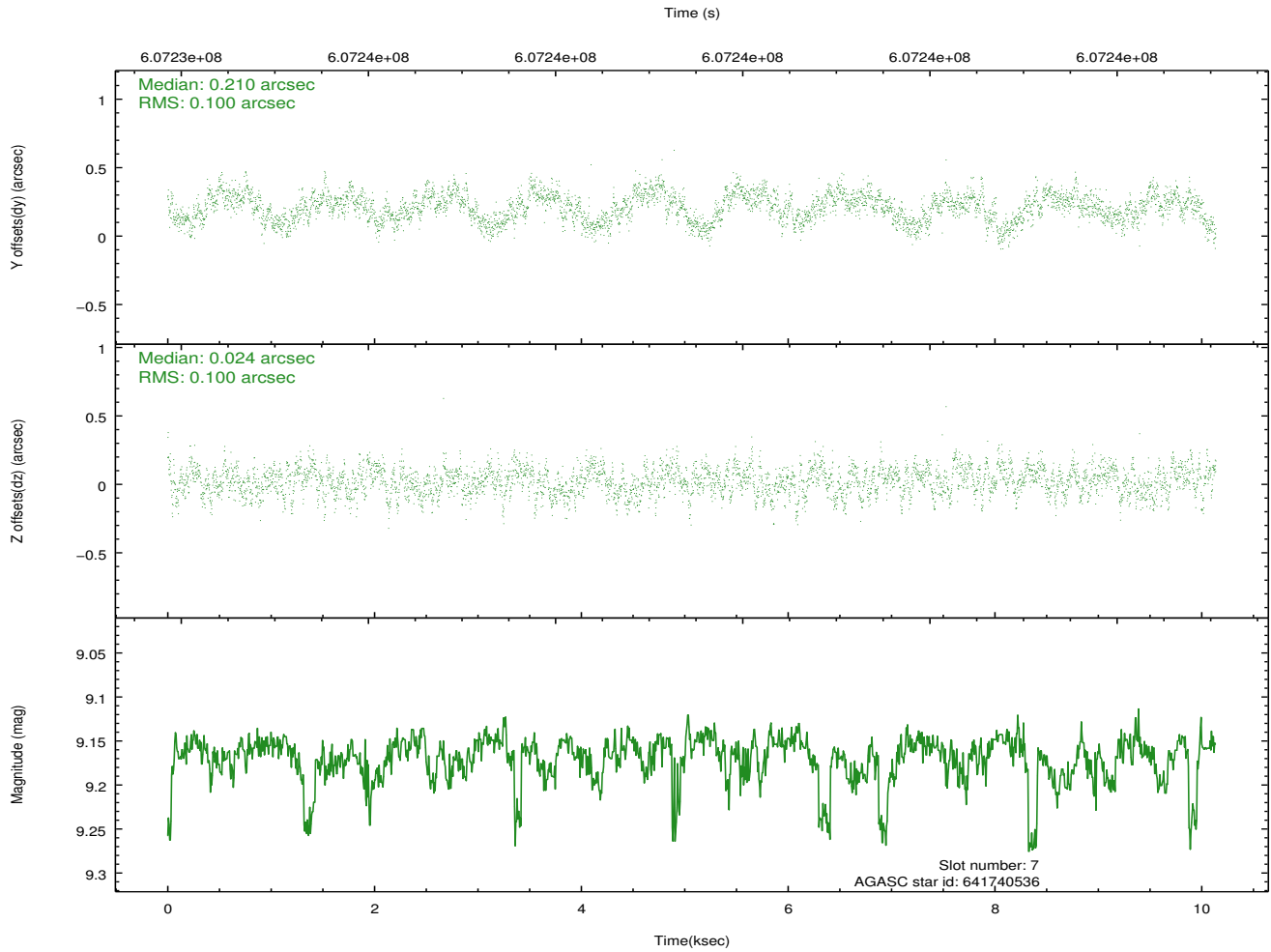
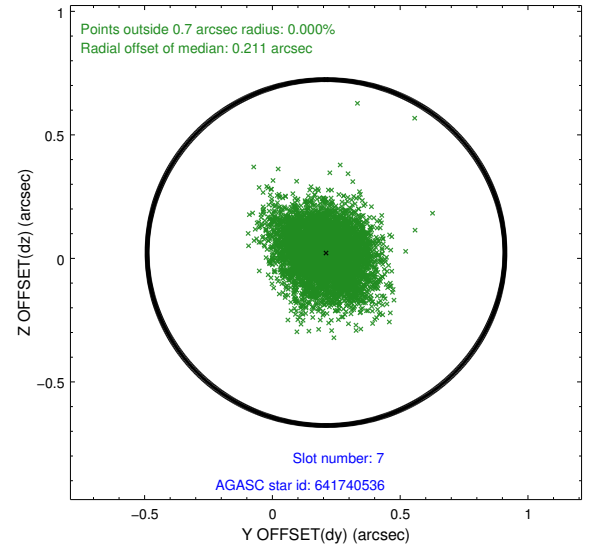
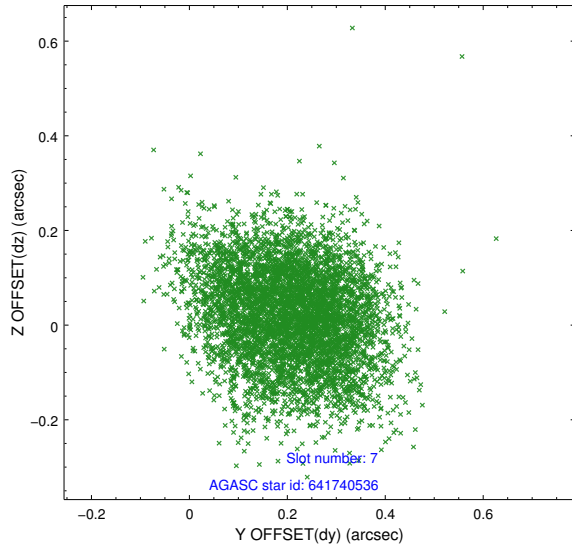


## 2.4.4 Slot 6



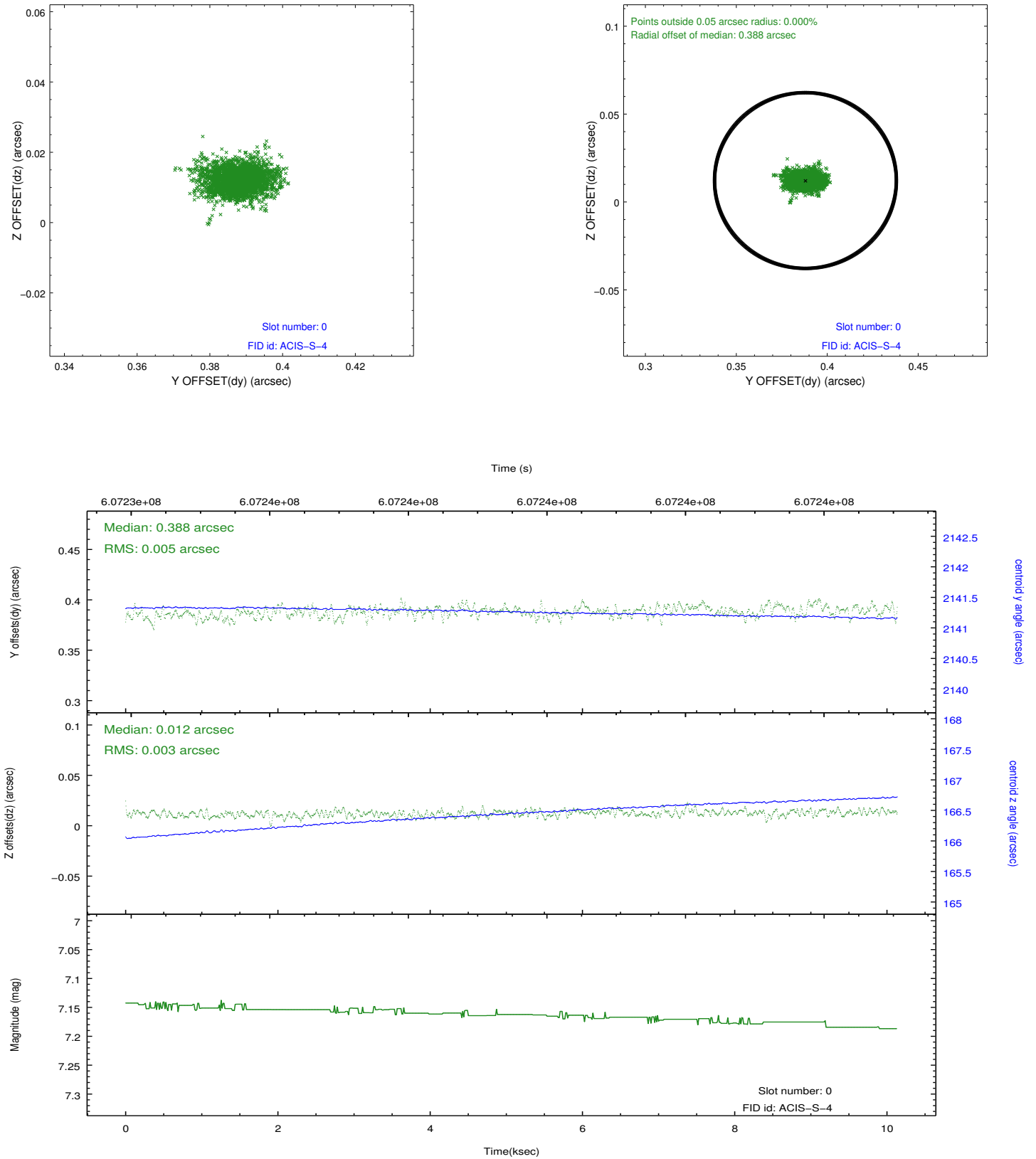


## 2.4.5 Slot 7

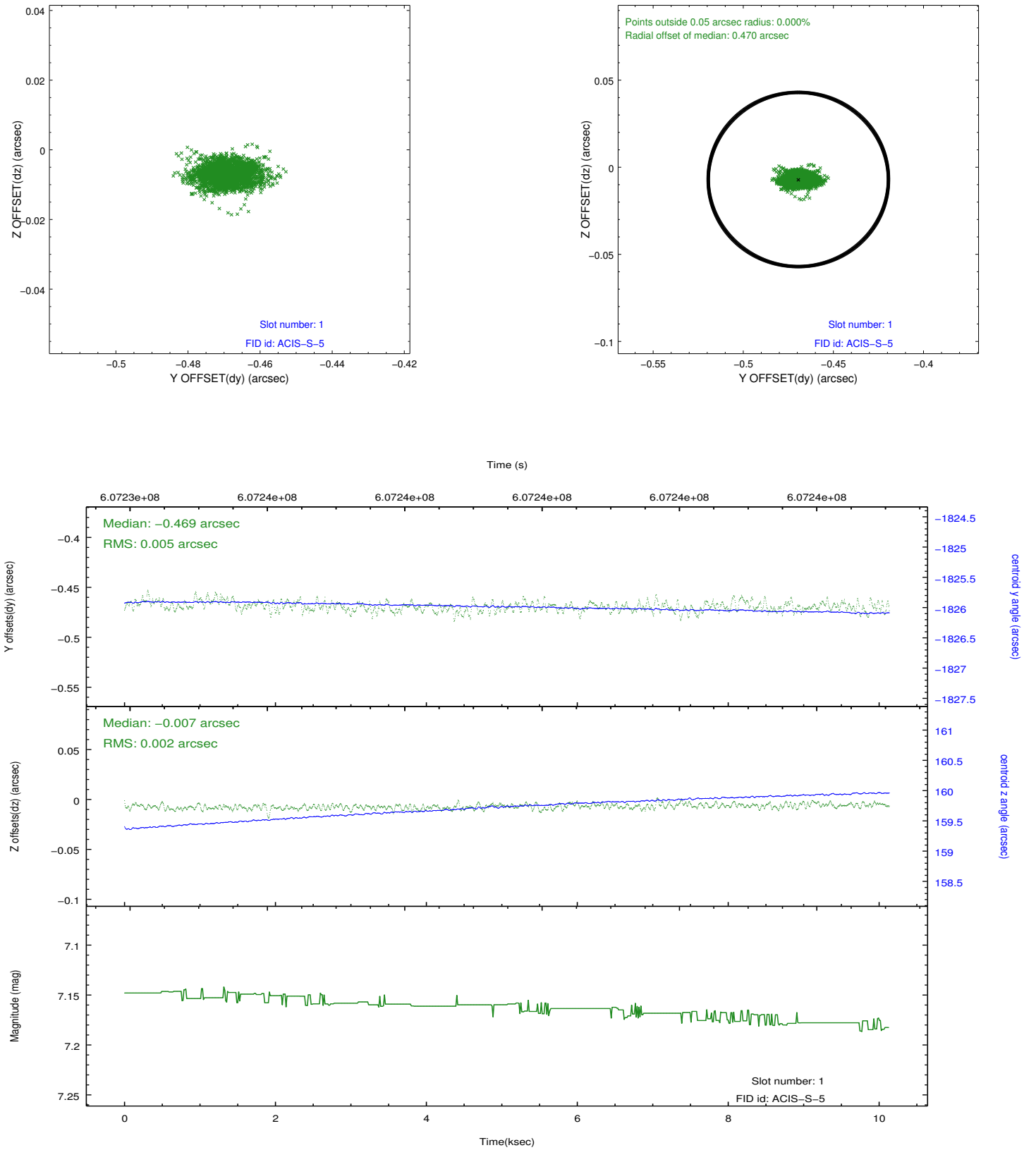


## 2.5 FID Slots

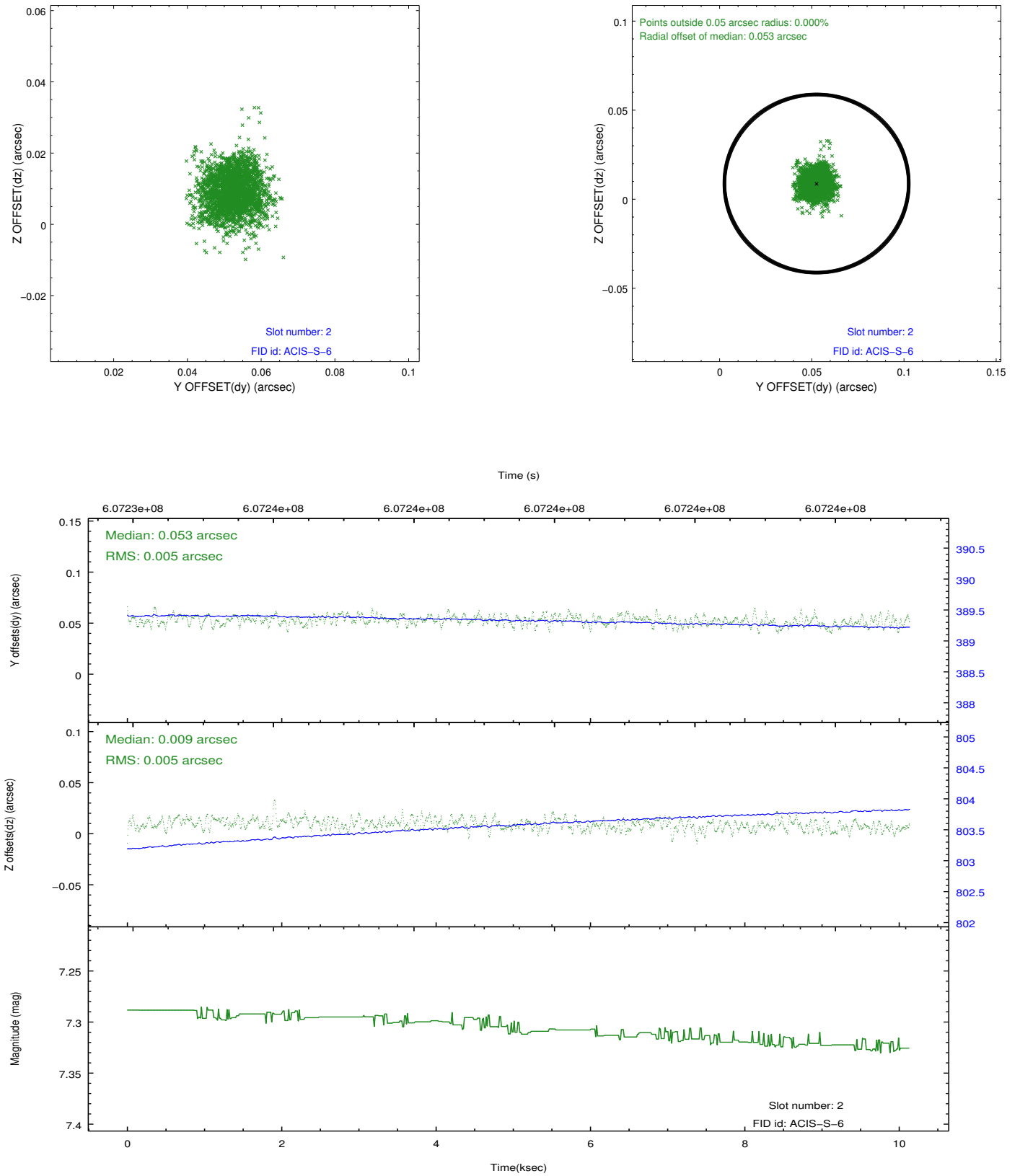
### 2.5.1 Slot 0



## 2.5.2 Slot 1



### 2.5.3 Slot 2



## A Summary

### A.1 Status

V&V Scientist	Beth Sundheim
V&V Date (YYYY-MM-DD)	2017.03.30
V&V Edition	1
V&V Disposition and Status	OK
V&V Charge Time	10.042609714031

### A.2 Comments

One optional chip was dropped.