

V&V Reference Report

L2 ASCDS Version : 10.5.2

Observation 19395 - L2 Version 1
Chandra X-Ray Center

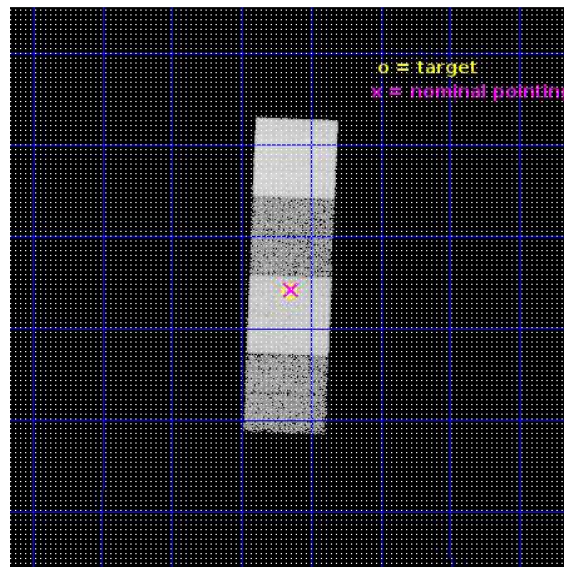
L2 Processing Date : Feb 14 2017

Contents

1	Front	2
2	OBI	3
2.1	OBI	3
2.1.1	Images	3
2.1.2	Bias	3
2.1.3	Parameters	4
2.1.4	Events	4
2.2	Compared Parameters	5
2.3	Aspect	6
2.4	Star Slots	9
2.4.1	Slot 3	9
2.4.2	Slot 4	10
2.4.3	Slot 5	11
2.4.4	Slot 6	12
2.4.5	Slot 7	13
2.5	FID Slots	14
2.5.1	Slot 0	14
2.5.2	Slot 1	15
2.5.3	Slot 2	16
A	Summary	17
A.1	Status	17
A.2	Comments	17

1 Front

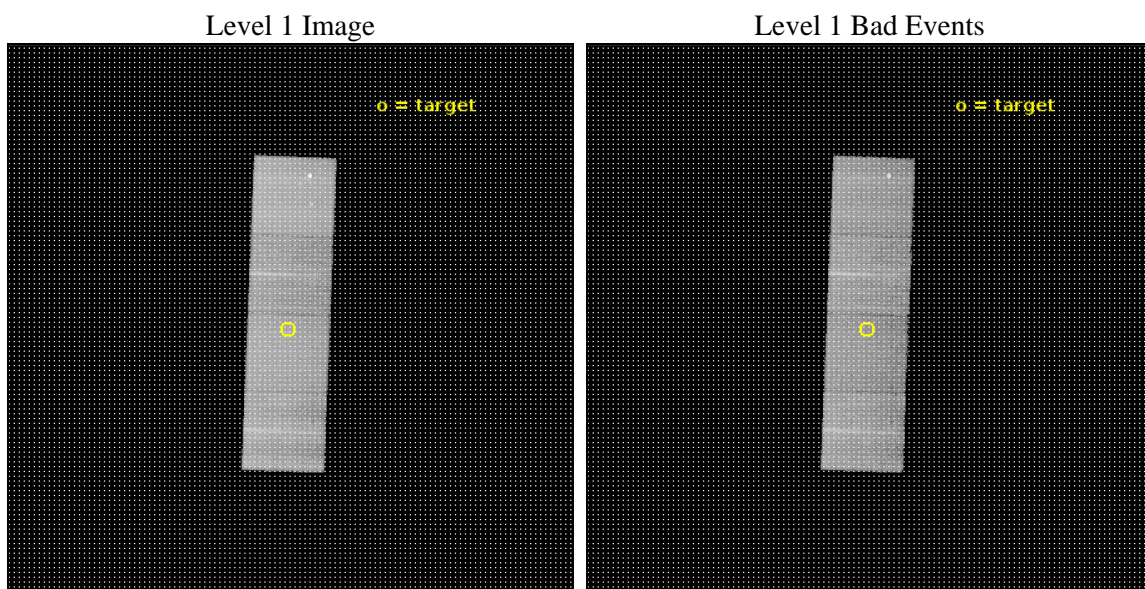
seq_num	601352	Sequence number
obs_id	19395	Observation id
title	Spiral galaxies of the Virgo cluster	Proposal title
observer	Roberto Soria	Principal investigator
object	NGC 4212	Source name
dtcycle	0	
cycle	P	events from which exps? Prim/Second/Both
ra_targ	183.914167	Observer's specified target RA [deg]
dec_targ	13.9015	Observer's specified target Dec [deg]
ra_nom	183.91044575921	Nominal RA [deg]
dec_nom	13.903699380501	Nominal Dec [deg]
roll_nom	92.157523452643	Nominal Roll [deg]
revision	1	Processing version of data
ontime	15059.800115943	Sum of GTIs [s]
livetime	14863.032740565	Livetime [s]
ontime5	15059.800115943	Sum of GTIs [s]
ontime6	15059.800115943	Sum of GTIs [s]
ontime7	15059.800115943	Sum of GTIs [s]
ontime8	15056.659025669	Sum of GTIs [s]
l2events	156967	Number of level 2 events



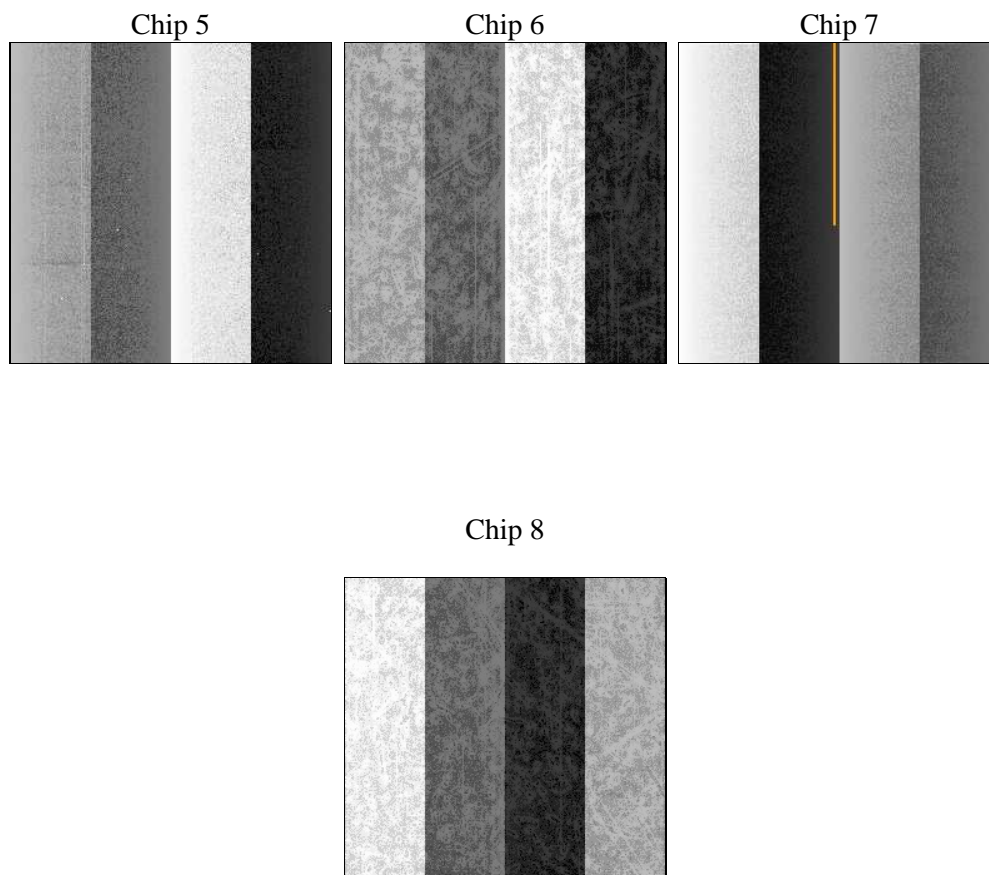
2 OBI

2.1 OBI

2.1.1 Images



2.1.2 Bias



2.1.3 Parameters

obi_num	0	Obi number	sched_exp_time	15000.000000	[s] Scheduled observation exposure time
ascdsver	10.5.2	Processing system revision	ontime	15059.800115943	Sum of GTIs [s]
caldsver	4.7.3	 	ontime5	15059.800115943	Sum of GTIs [s]
date	2017-02-15T03:20:49	Date and time of file creation	ontime6	15059.800115943	Sum of GTIs [s]
revision	1	Processing version of data	ontime7	15059.800115943	Sum of GTIs [s]
			ontime8	15056.659025669	Sum of GTIs [s]
			l1events	568317	Number of level 1 events

2.1.4 Events

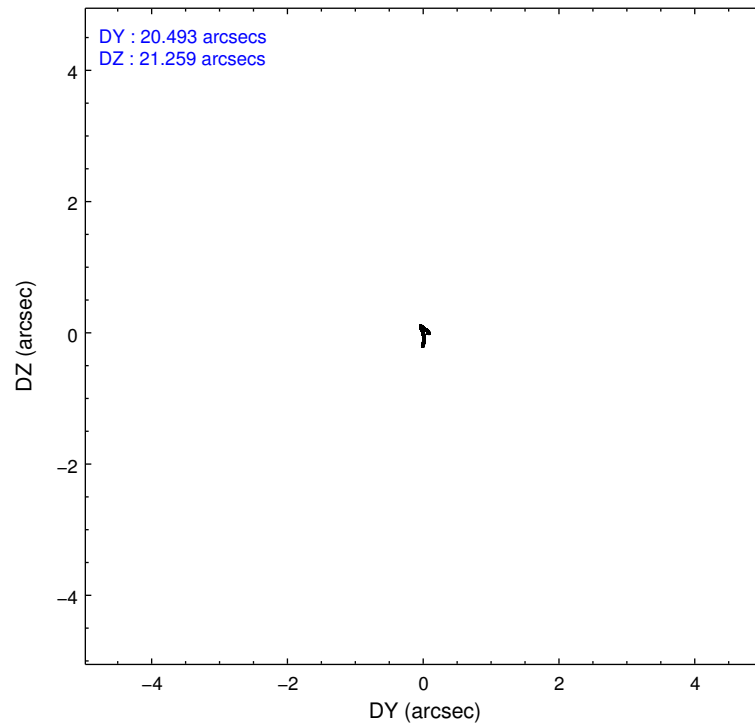
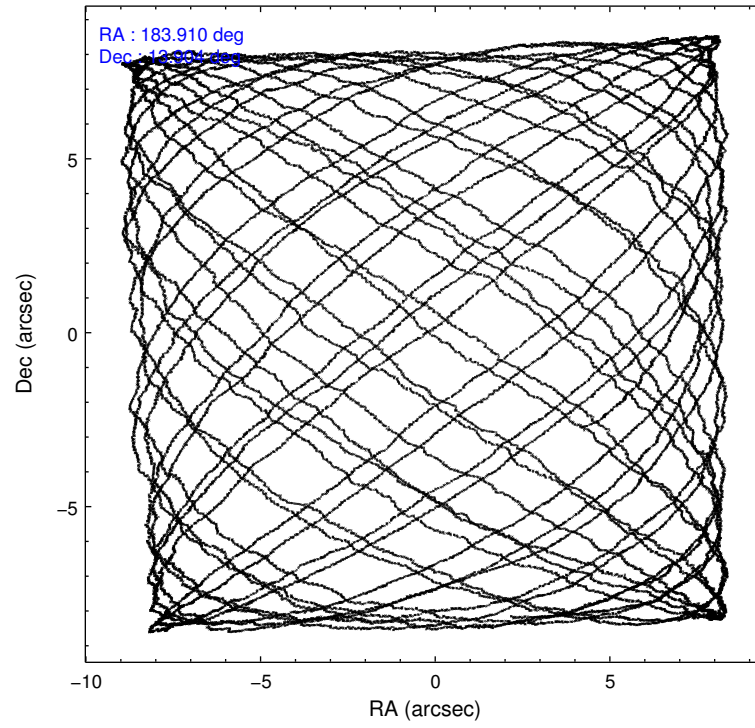
	ccd 5	ccd 6	ccd 7	ccd 8
level 1 events	174292	112608	139090	142327
rejected events	92503	100305	79479	106732
rejected %	53%	89%	57%	74%

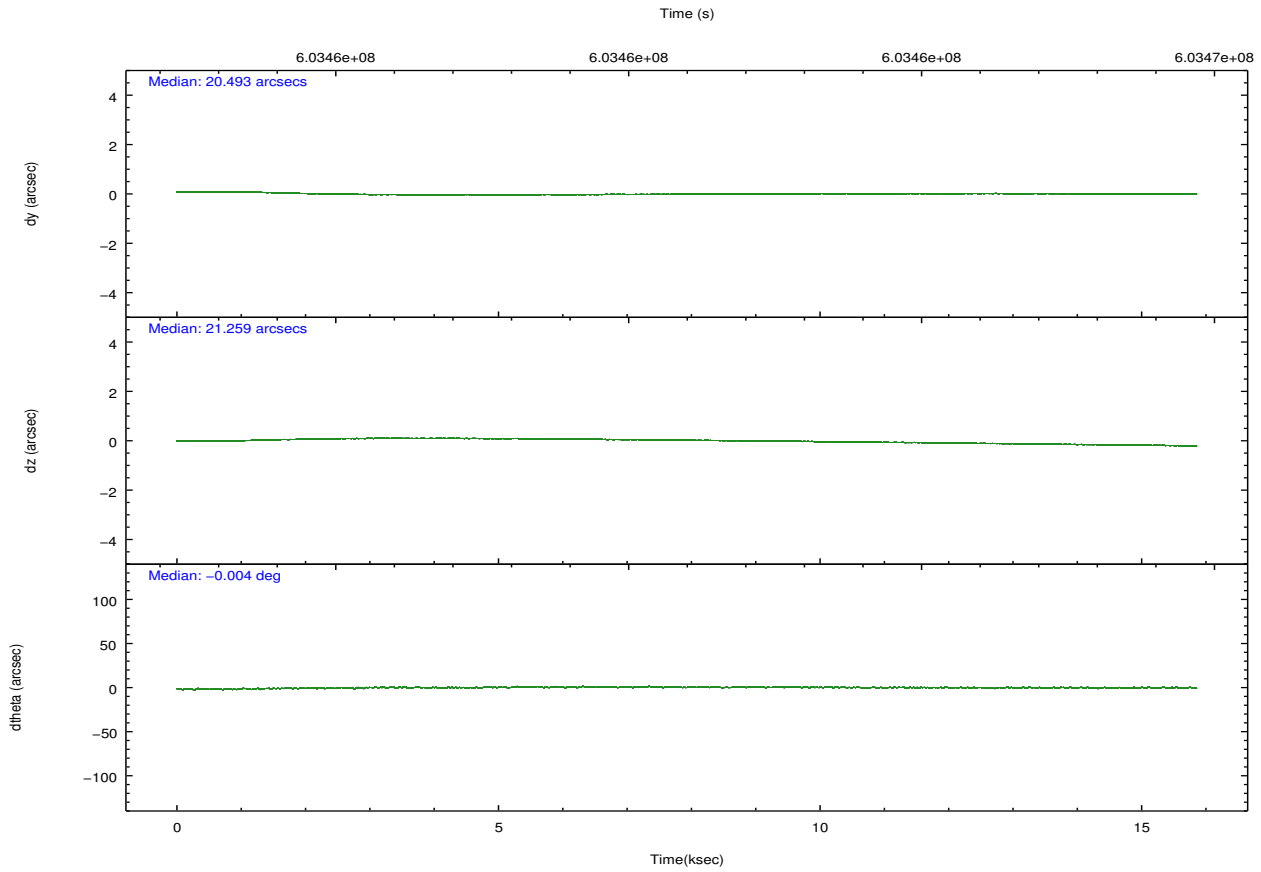
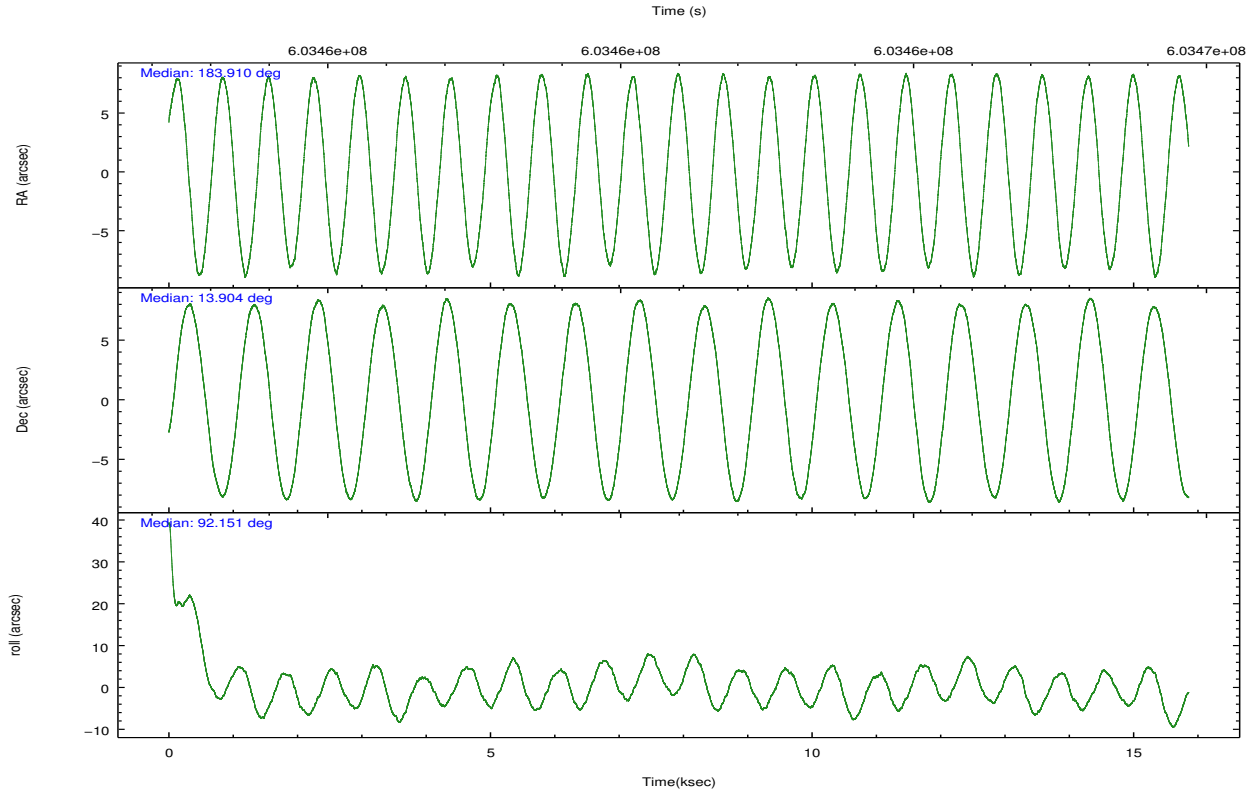
	ccd 5	ccd 6	ccd 7	ccd 8
grade 0 events	5293	3681	4797	9919
	3%	3%	3%	6%
grade 1 events	434	63	158	97
	0%	0%	0%	0%
grade 2 events	25253	3195	12843	8864
	14%	2%	9%	6%
grade 3 events	2902	1093	4382	3657
	1%	0%	3%	2%
grade 4 events	2190	1104	4247	3439
	1%	0%	3%	2%
grade 5 events	12125	4484	12873	7349
	6%	3%	9%	5%
grade 6 events	46169	3230	33360	9728
	26%	2%	23%	6%
grade 7 events	79926	95758	66430	99274
	45%	85%	47%	69%

2.2 Compared Parameters

Parameter	Planned	Actual	Parameter	Planned	Actual
Instrument	ACIS	ACIS	Obspar format version number	7	7
Detector	ACIS-5678	ACIS-5678	Obspar file type	PREDICTED	ACTUAL
Grating	NONE	NONE	Obspar update status	NONE	UPDATED
Data mode	VFAINT	VFAINT	Number of optional ACIS chips dropped	0	0
Observation mode	POINTING	POINTING	On-chip summing requested	N	N
[deg] Pointing RA	183.925791	183.9104457592114	Subarray requested	NONE	NONE
[deg] Pointing Dec	13.880643	13.90369938050148	Alternating exposures requested	N	N
[deg] Pointing Roll	91.997215	92.1575234526431	[s] Primary exposure time	0.000000	3.1
[mm] SIM focus pos	-0.684267	-0.6828225247311905			
[mm] SIM defocus	0	0.001444936568705701			
[mm] SIM translation stage pos	-190.132523	-190.1400660498719			
[mm] SIM translation stage offset	0	0.00754346686406393			
[s] Observation start time (MET)	603453907.184000	603452346.448			
Observation start date	2017-02-14T10:03:58	2017-02-14T09:39:06			
[s] Observation end time (MET)	603468907.184000	603469657.1615			
Observation end date	2017-02-14T14:13:58	2017-02-14T14:27:37			
Read mode	TIMED	TIMED			

2.3 Aspect



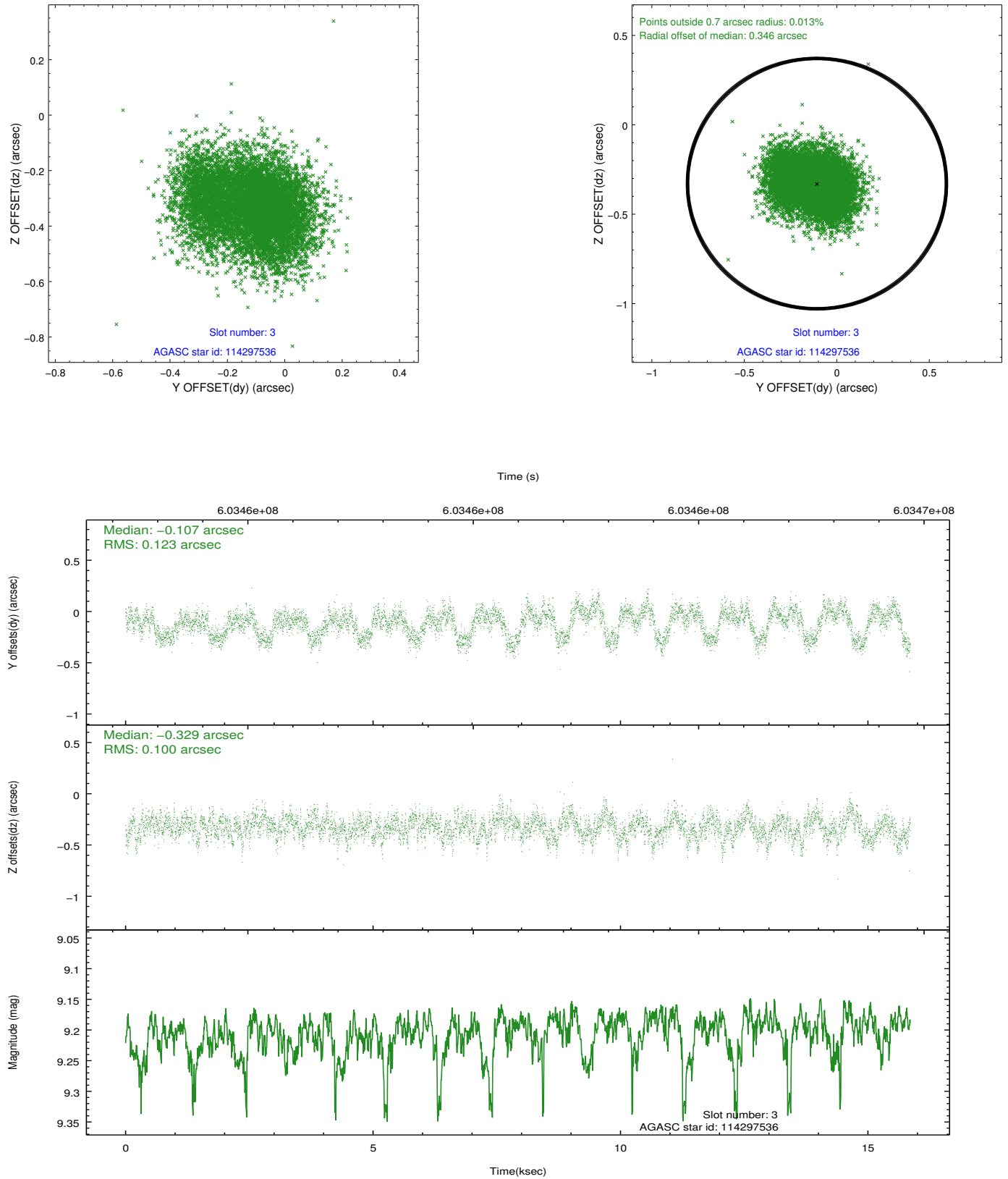


Slot Statistics

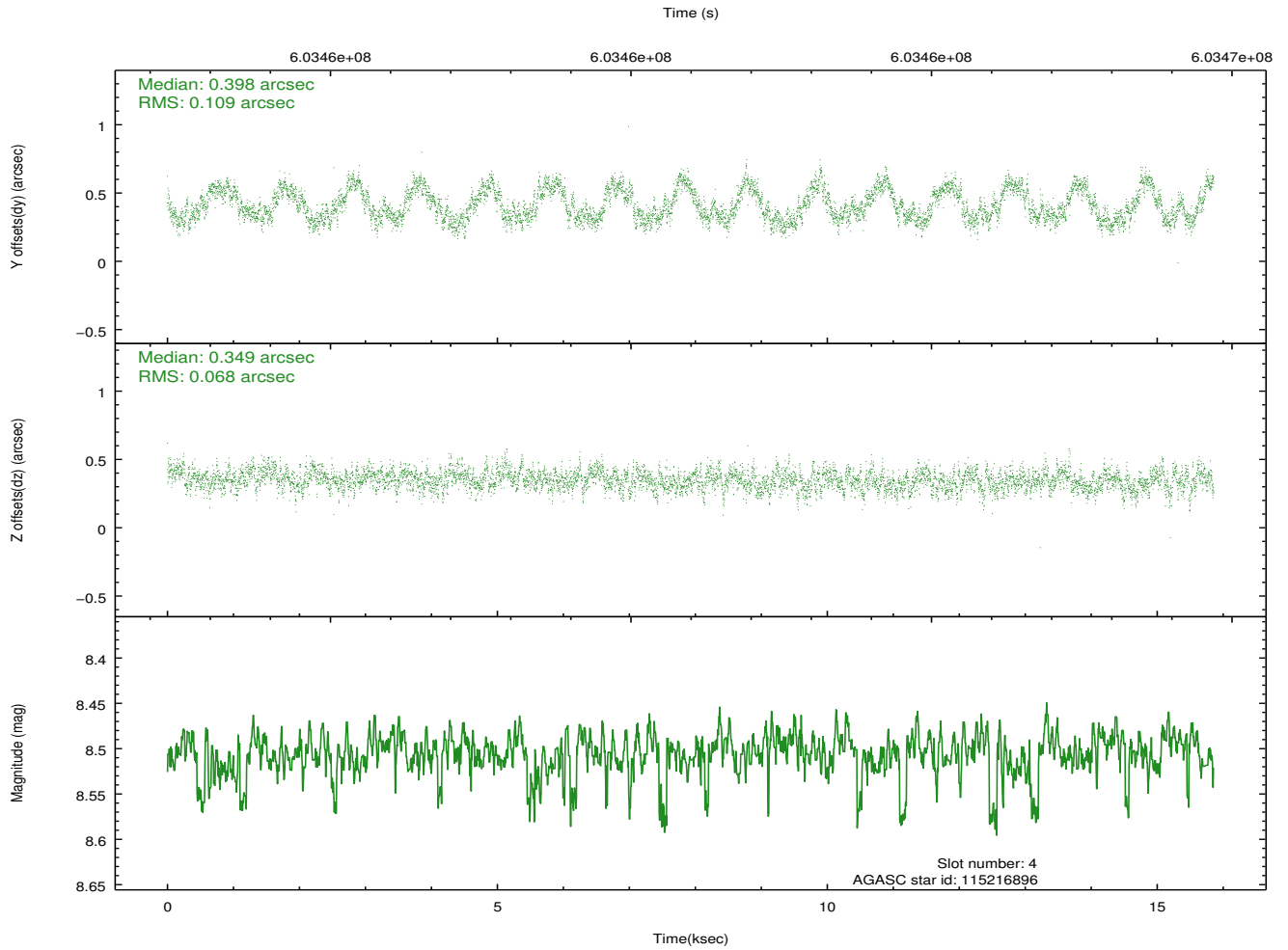
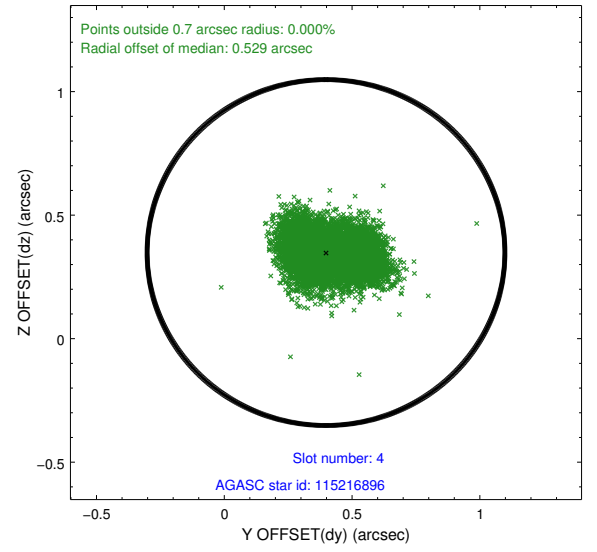
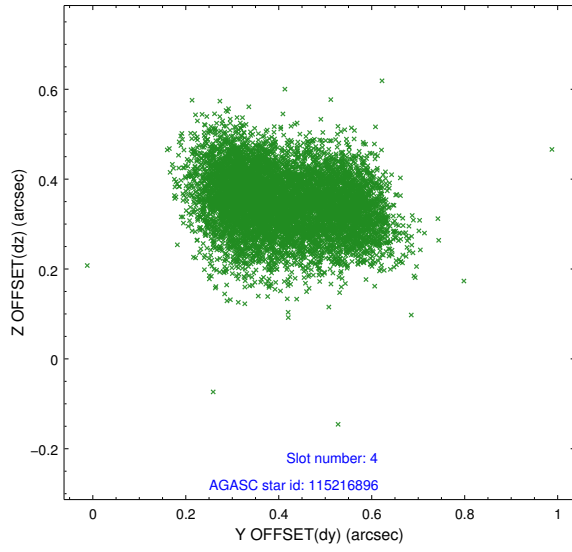
slot	status	used	id	mag	n_pts	med_dy	med_dz	dr1	dr2	ra	dec	mean_y	mean_z
0	FID		ACIS-S-2	7.08	3868	-0.234	-0.143	0.008	0.013	0.000000	0.000000	-773.84	-1742.93
1	FID		ACIS-S-4	7.19	3868	0.491	0.151	0.006	0.011	0.000000	0.000000	2140.03	165.56
2	FID		ACIS-S-5	7.18	3868	-0.288	0.001	0.007	0.012	0.000000	0.000000	-1826.39	159.39
3	GUIDE	used	114297536	9.20	7721	-0.107	-0.329	0.173	0.267	183.757120	14.264956	1403.59	539.78
4	GUIDE	used	115216896	8.51	7734	0.398	0.349	0.140	0.214	184.169439	13.297075	-2128.19	-779.80
5	GUIDE	used	115217168	9.58	7719	-0.050	0.029	0.137	0.229	184.139200	14.158763	975.29	-778.93
6	GUIDE	used	115218912	8.27	7730	0.118	0.309	0.106	0.184	184.400783	14.442830	1966.84	-1723.42
7	GUIDE	used	114303096	9.27	7721	-0.359	-0.357	0.124	0.200	183.214020	14.515722	2375.31	2399.86

2.4 Star Slots

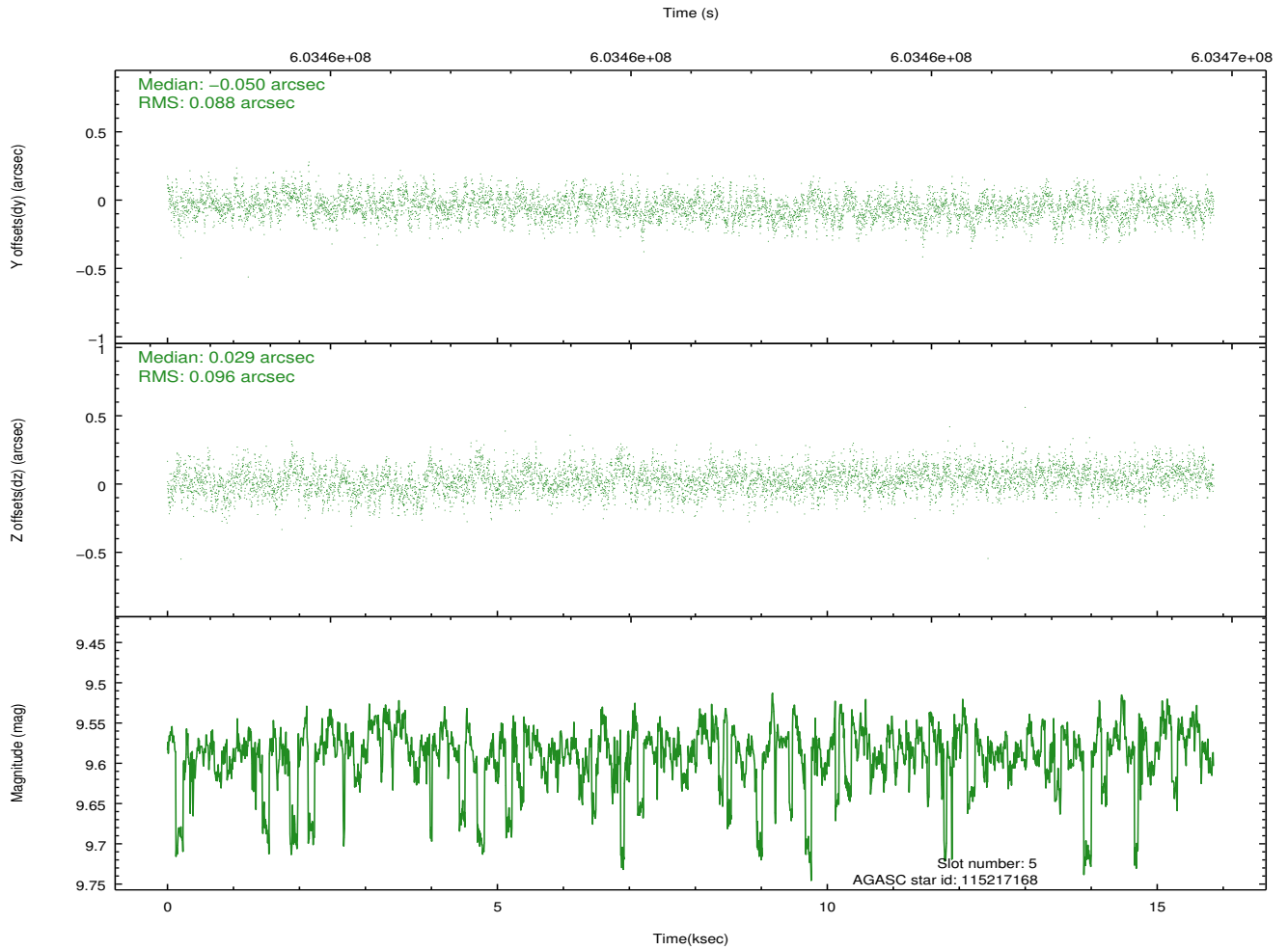
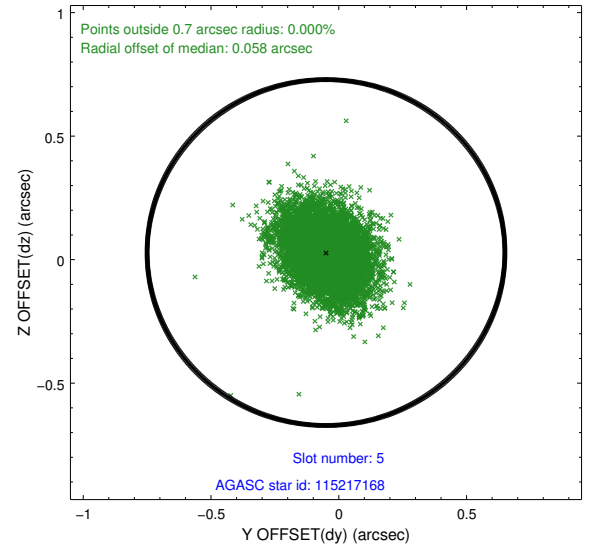
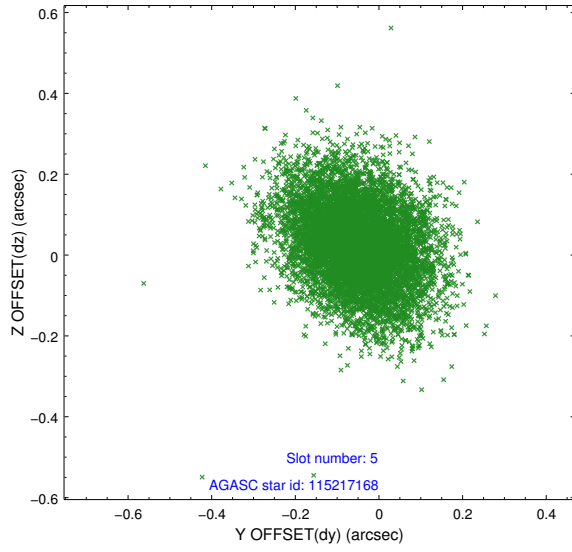
2.4.1 Slot 3



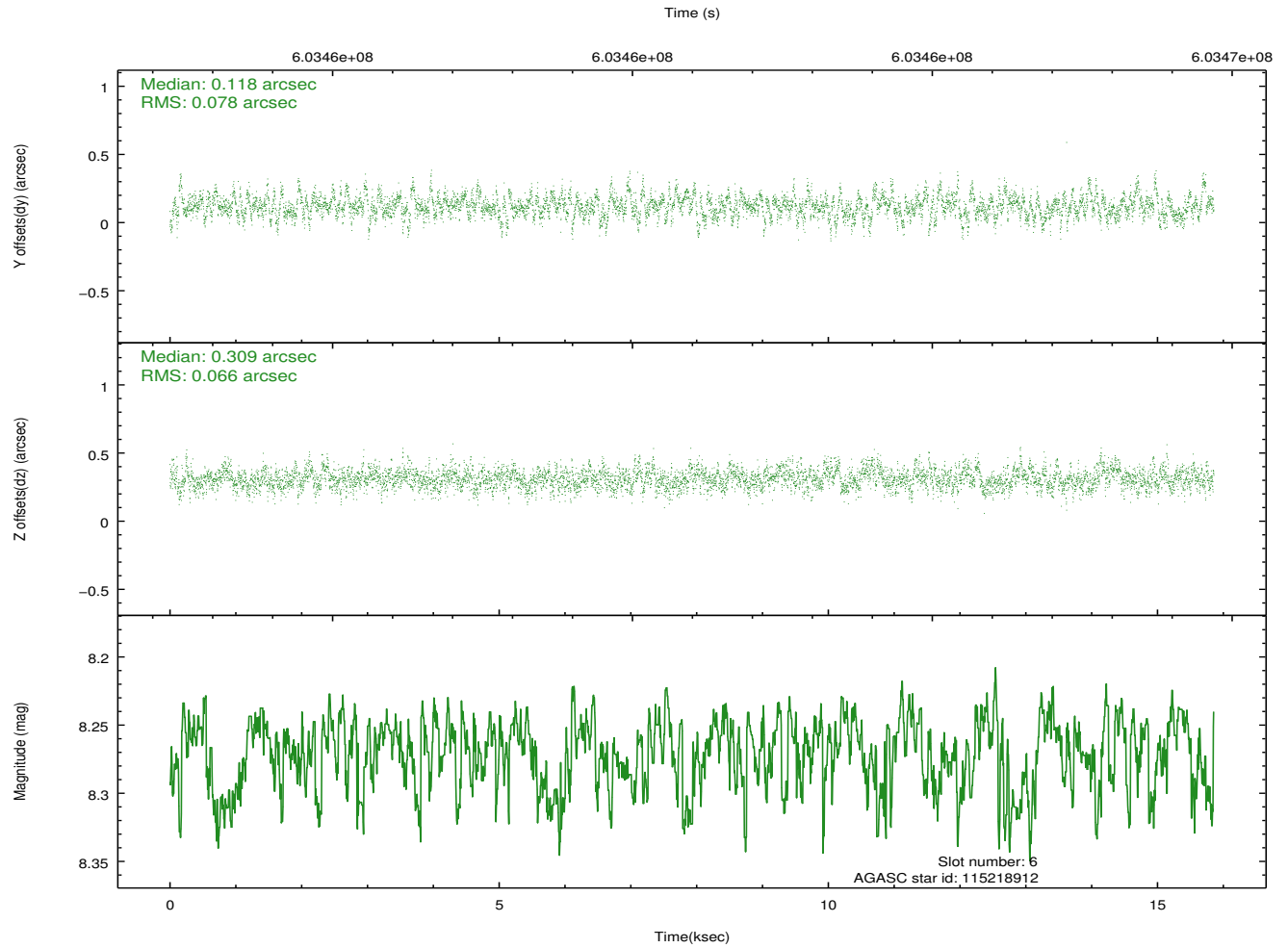
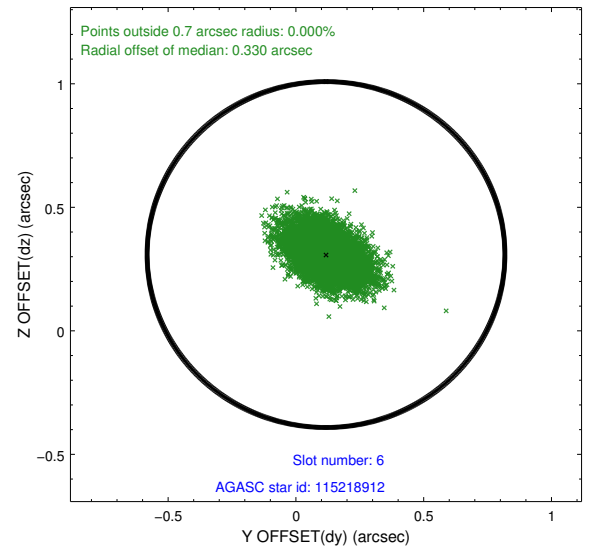
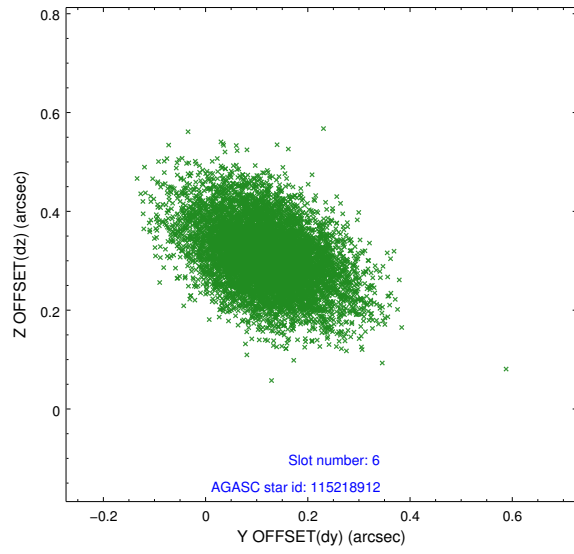
2.4.2 Slot 4



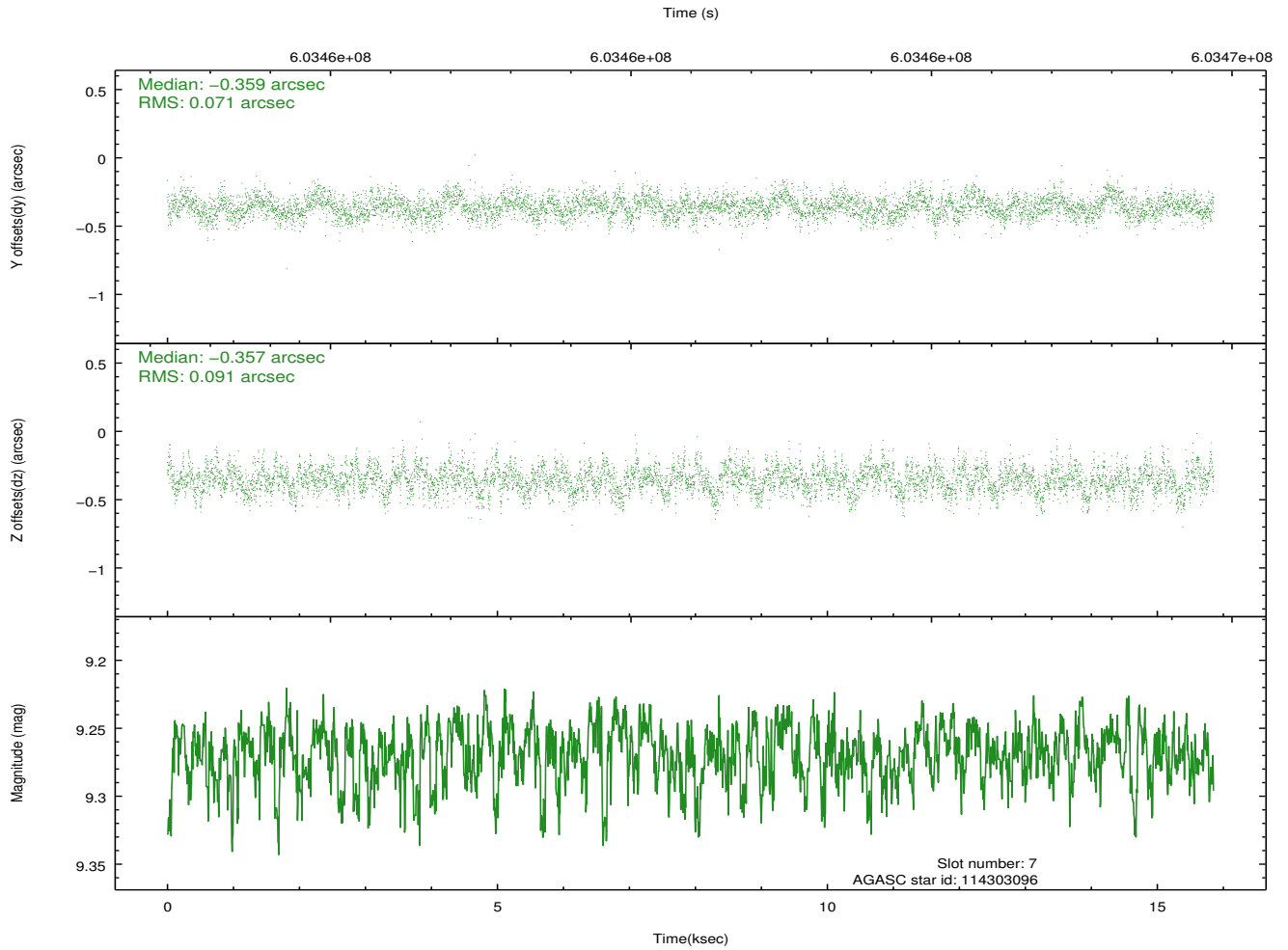
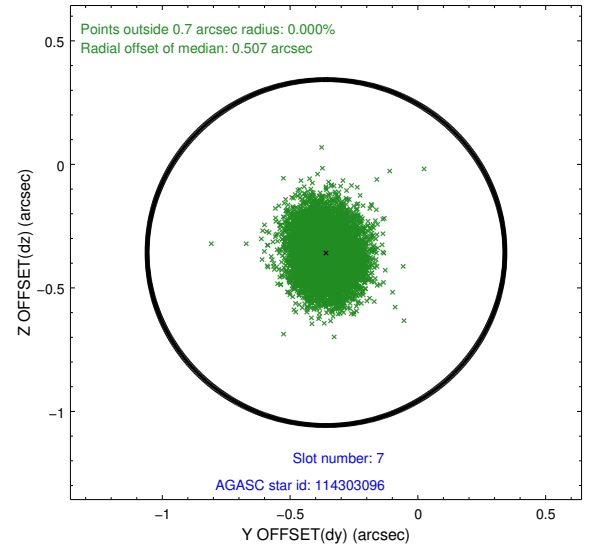
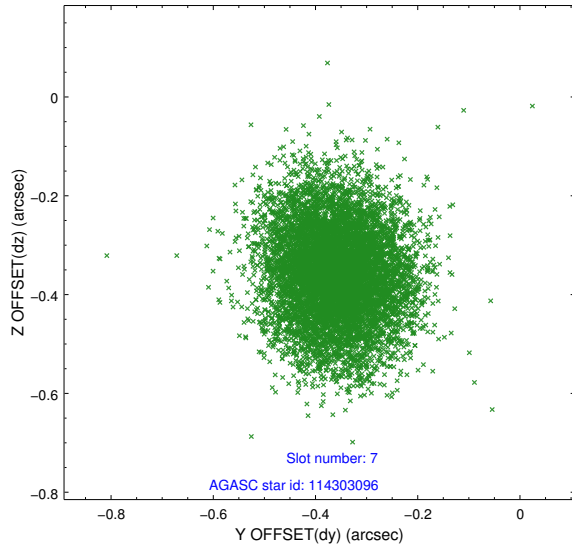
2.4.3 Slot 5



2.4.4 Slot 6

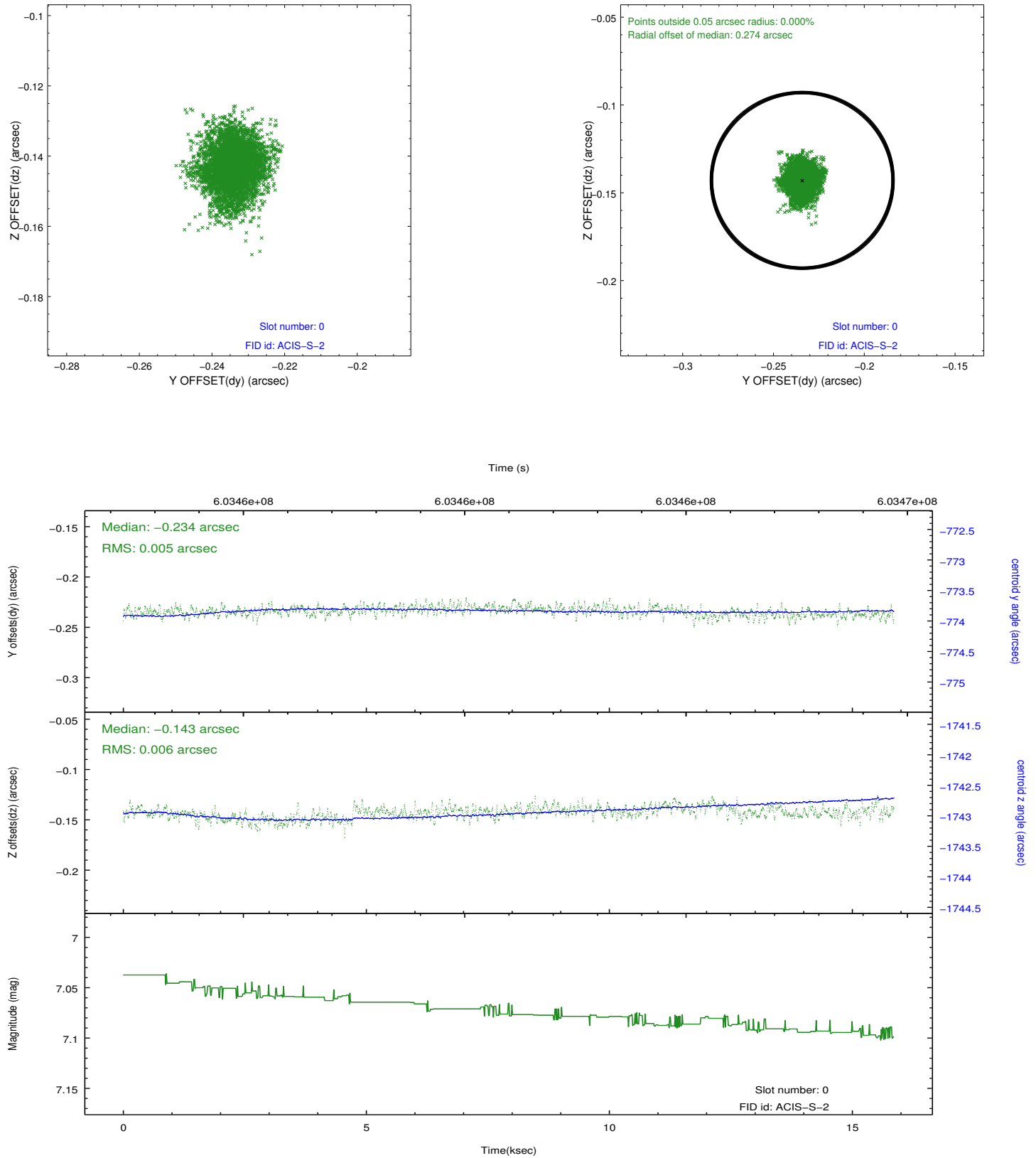


2.4.5 Slot 7

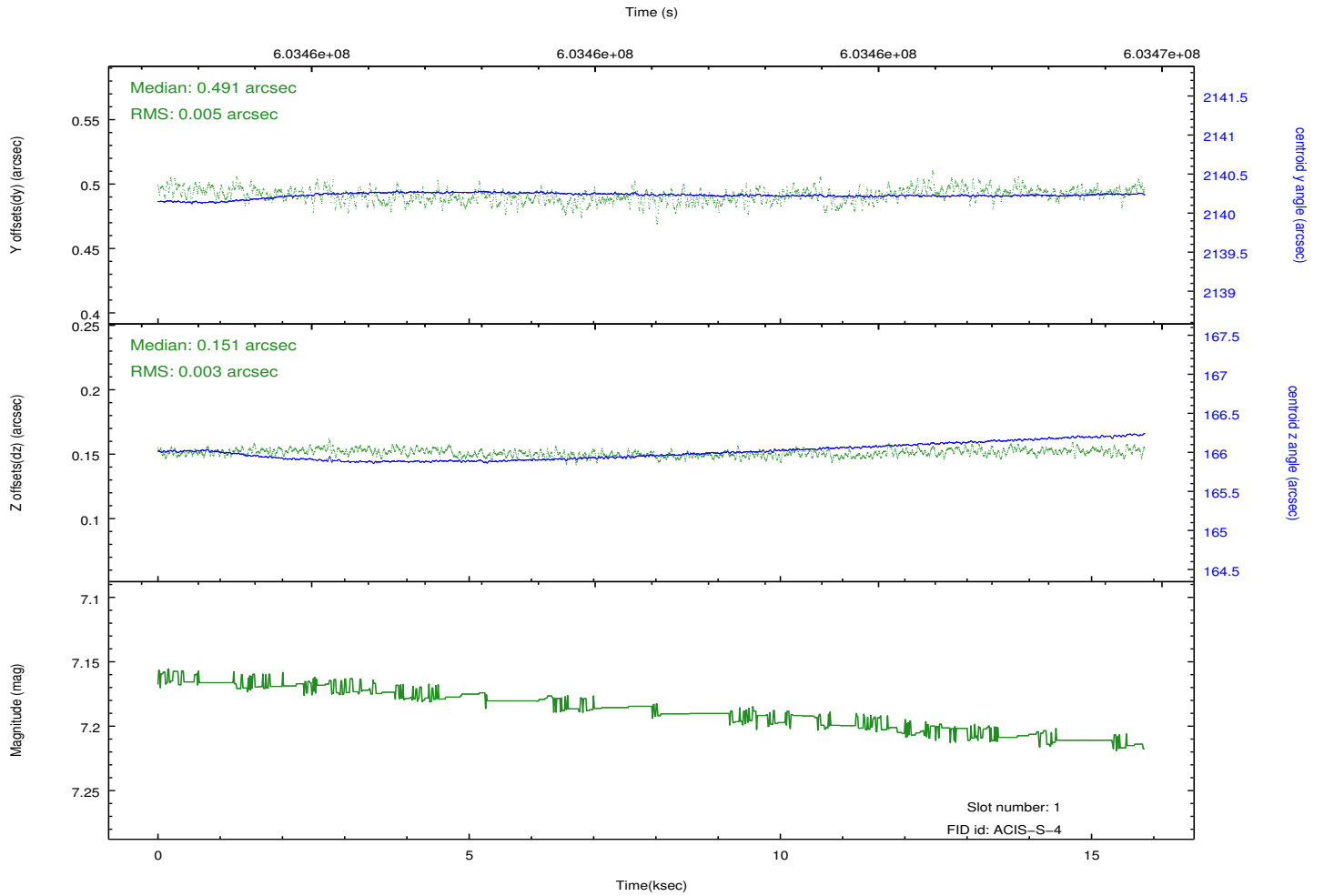
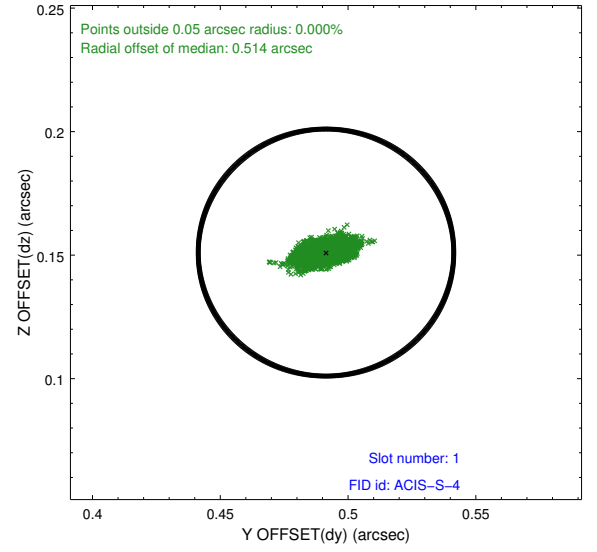
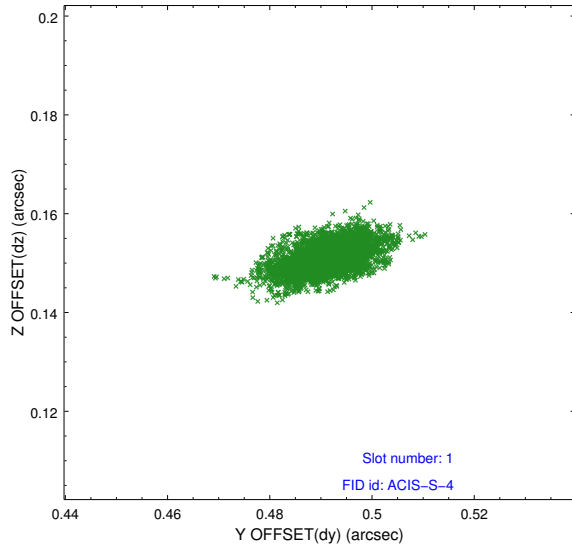


2.5 FID Slots

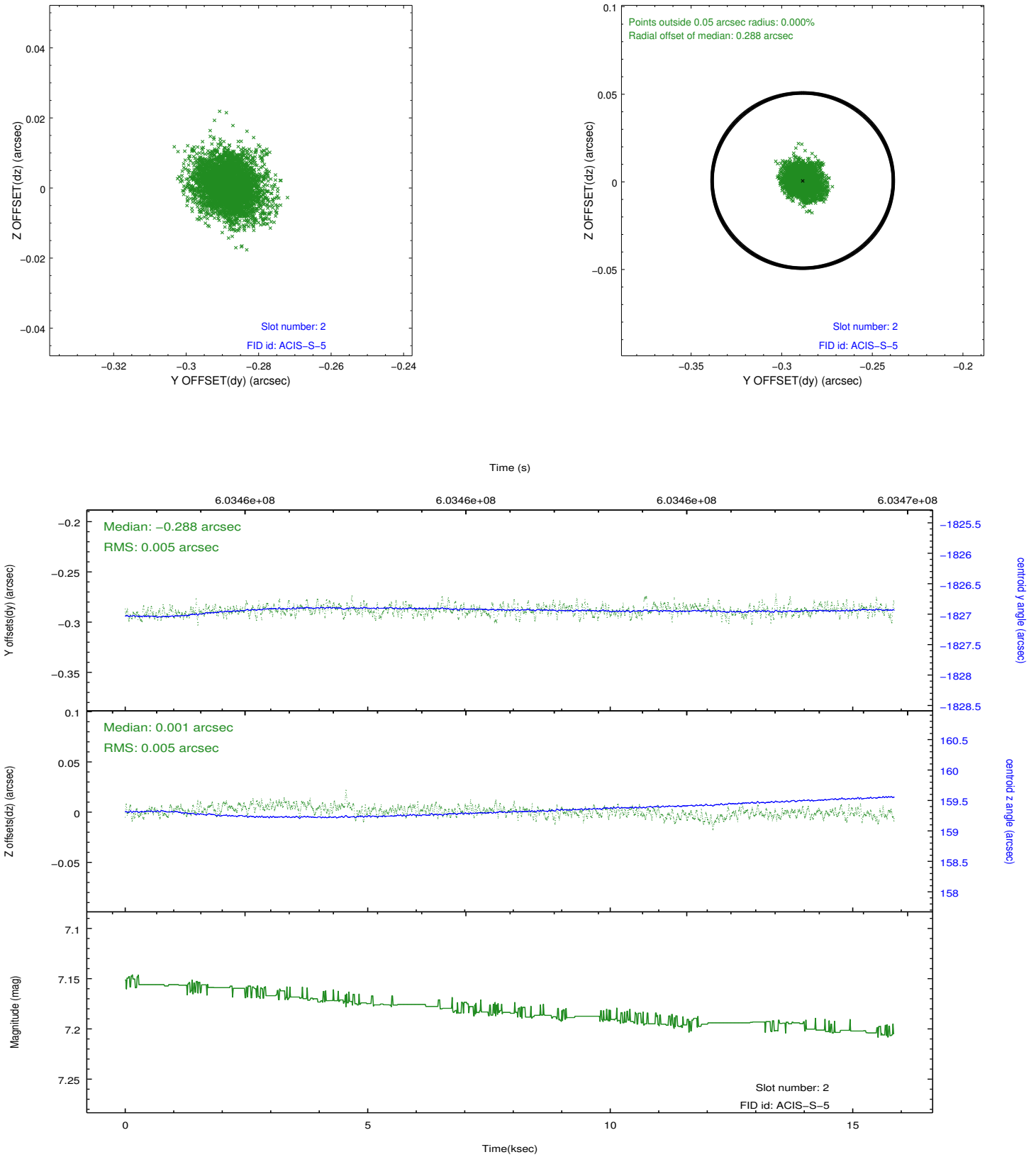
2.5.1 Slot 0



2.5.2 Slot 1



2.5.3 Slot 2



A Summary

A.1 Status

V&V Scientist	Joy Nichols
V&V Date (YYYY-MM-DD)	2017.02.15
V&V Edition	1
V&V Disposition and Status	OK
V&V Charge Time	15.059800115943

A.2 Comments