

V&V Reference Report

L2 ASCDS Version : 10.6

Observation 19352 - L2 Version 1
Chandra X-Ray Center

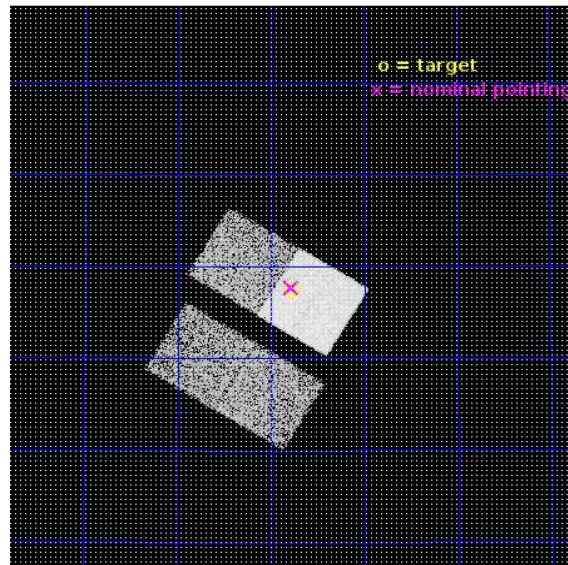
L2 Processing Date : Dec 5 2017

Contents

1	Front	2
2	OBI	3
2.1	OBI	3
2.1.1	Images	3
2.1.2	Bias	3
2.1.3	Parameters	4
2.1.4	Events	4
2.2	Compared Parameters	5
2.3	Aspect	6
2.4	Star Slots	9
2.4.1	Slot 3	9
2.4.2	Slot 4	10
2.4.3	Slot 5	11
2.4.4	Slot 6	12
2.4.5	Slot 7	13
2.5	FID Slots	14
2.5.1	Slot 0	14
2.5.2	Slot 1	15
2.5.3	Slot 2	16
A	Summary	17
A.1	Status	17
A.2	Comments	17

1 Front

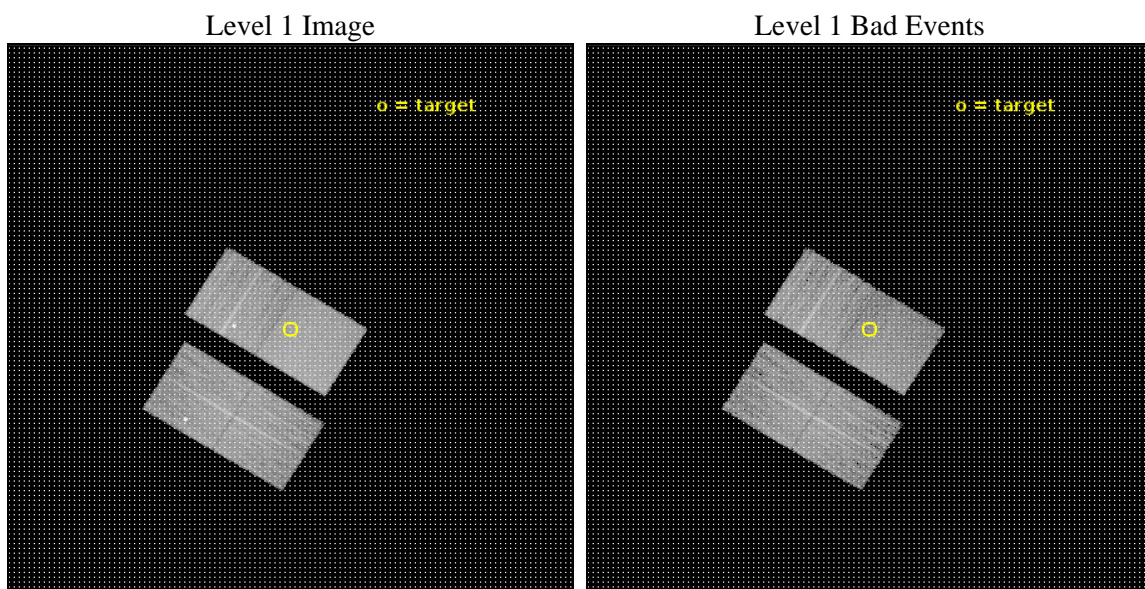
seq_num	601309	Sequence number
obs_id	19352	Observation id
title	A Statistically Complete High Resolution Chandra and Radio (eMERLIN) Survey of the Palomar Nearby Galaxies Sample	Proposal title
observer	Ian McHardy	Principal investigator
object	NGC 5676	Source name
dtcycle	0	
cycle	P	events from which exps? Prim/Second/Both
ra_targ	218.195417	Observer's specified target RA [deg]
dec_targ	49.457806	Observer's specified target Dec [deg]
ra_nom	218.19563139199	Nominal RA [deg]
dec_nom	49.462096926421	Nominal Dec [deg]
roll_nom	31.315020091871	Nominal Roll [deg]
revision	1	Processing version of data
ontime	10067.952421904	Sum of GTIs [s]
livetime	9936.4072115927	Livetime [s]
ontime2	10067.829301953	Sum of GTIs [s]
ontime3	10067.870341897	Sum of GTIs [s]
ontime6	10064.770351887	Sum of GTIs [s]
ontime7	10067.952421904	Sum of GTIs [s]
l2events	58826	Number of level 2 events



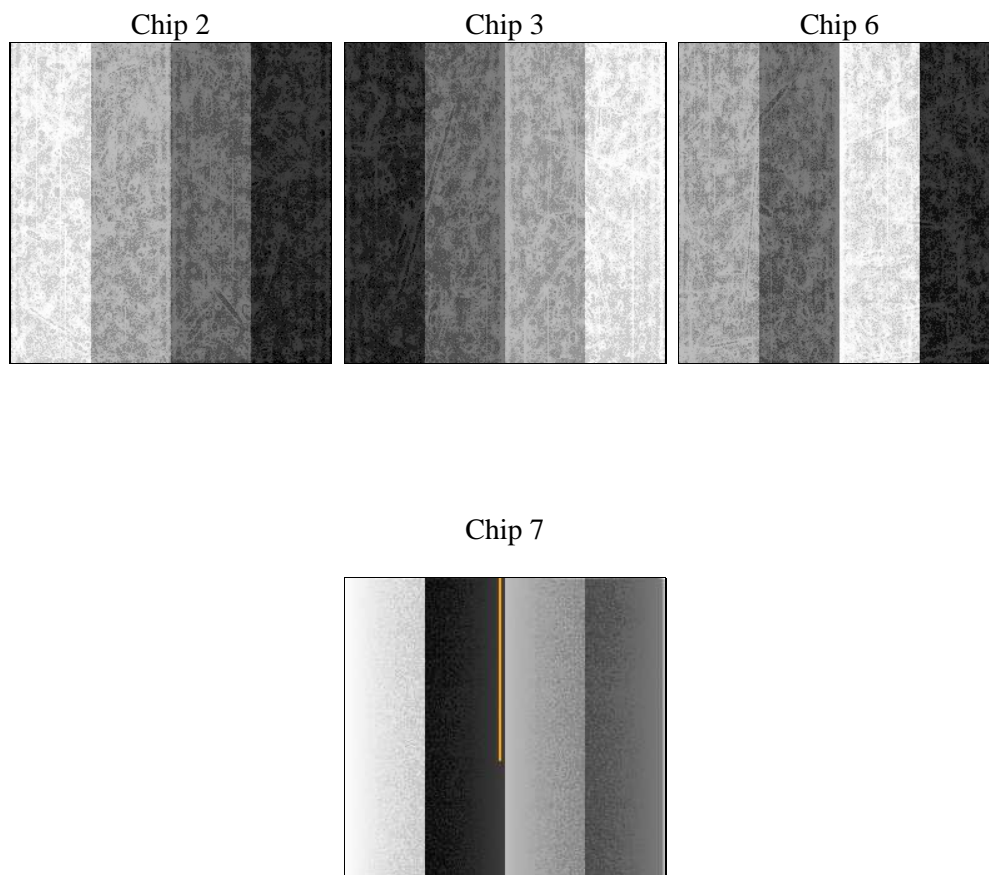
2 OBI

2.1 OBI

2.1.1 Images



2.1.2 Bias



2.1.3 Parameters

obi_num	0	Obi number	sched_exp_time	10000.000000	[s] Scheduled observation exposure time
ascdsver	10.6	Processing system revision	ontime	10067.952421904	Sum of GTIs [s]
caldsver	4.7.6	 	ontime2	10067.829301953	Sum of GTIs [s]
date	2017-12-05T18:15:59	Date and time of file creation	ontime3	10067.870341897	Sum of GTIs [s]
revision	1	Processing version of data	ontime6	10064.770351887	Sum of GTIs [s]
			ontime7	10067.952421904	Sum of GTIs [s]
			l1events	317295	Number of level 1 events

2.1.4 Events

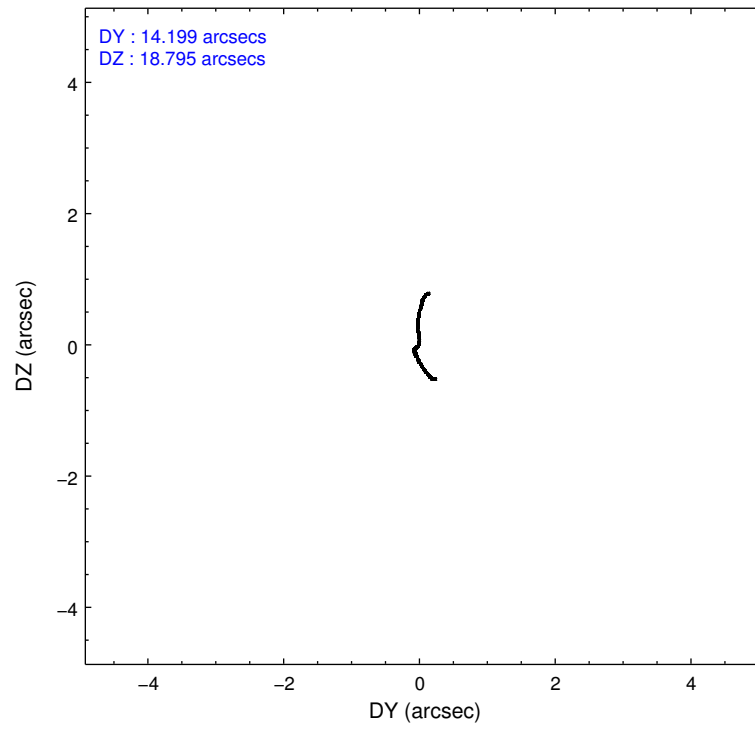
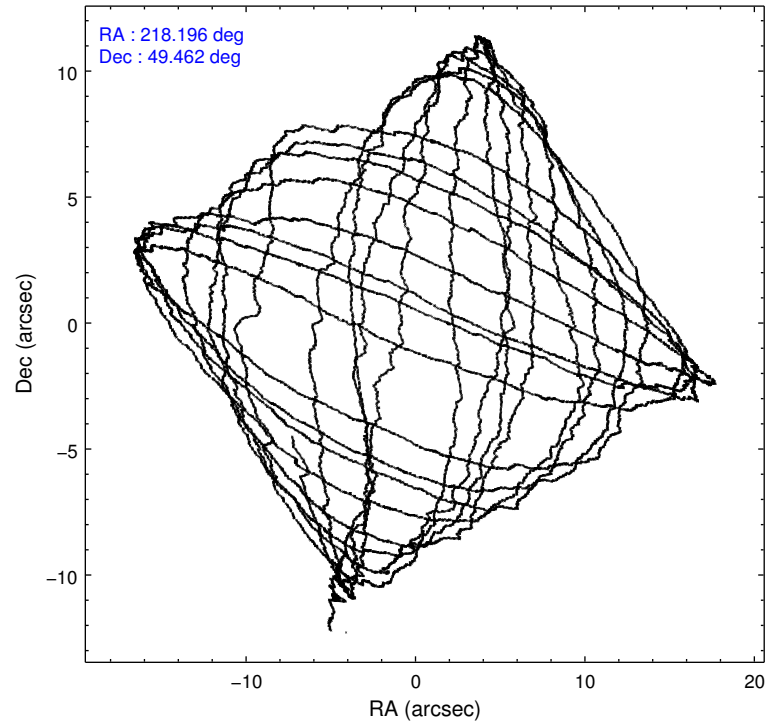
	ccd 2	ccd 3	ccd 6	ccd 7
level 1 events	73808	70422	80702	92363
rejected events	63422	63223	69947	52174
rejected %	85%	89%	86%	56%

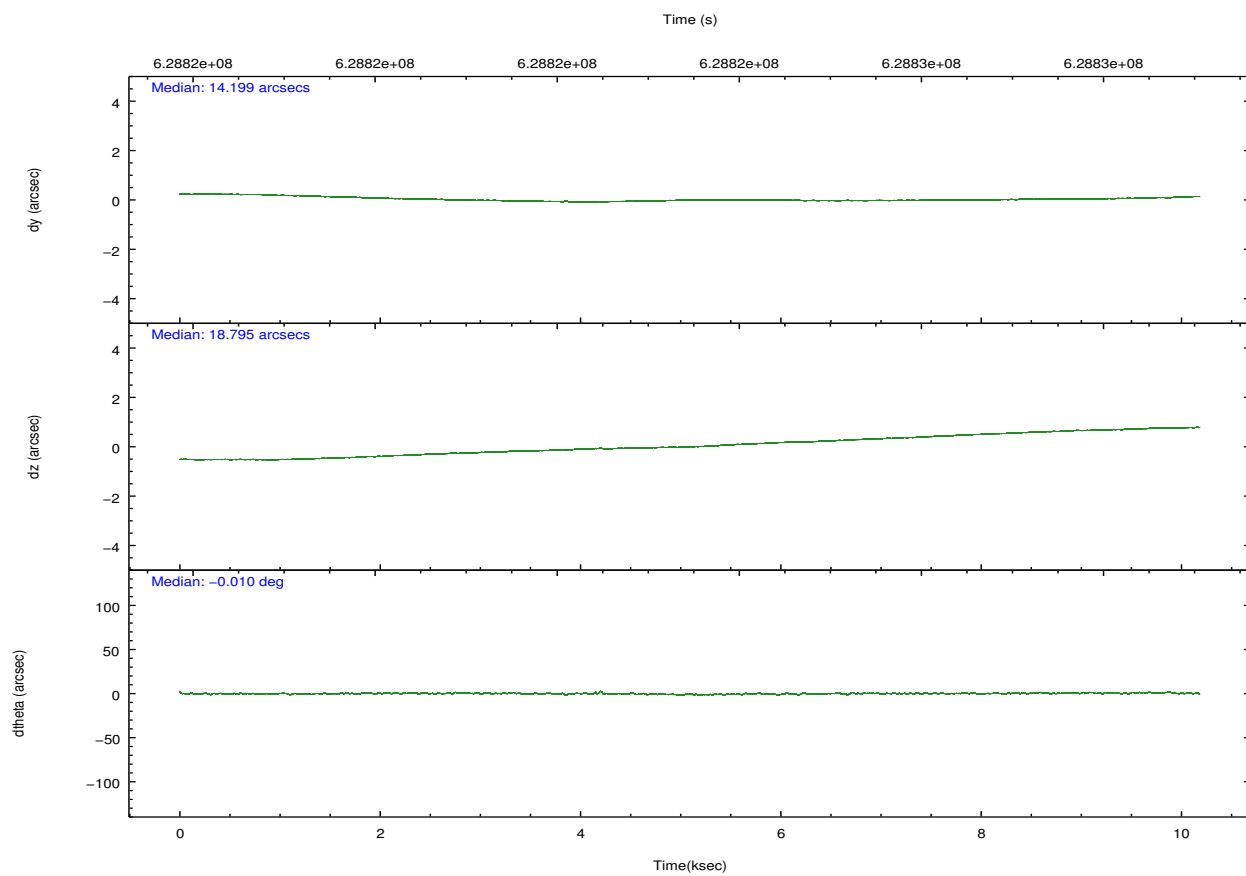
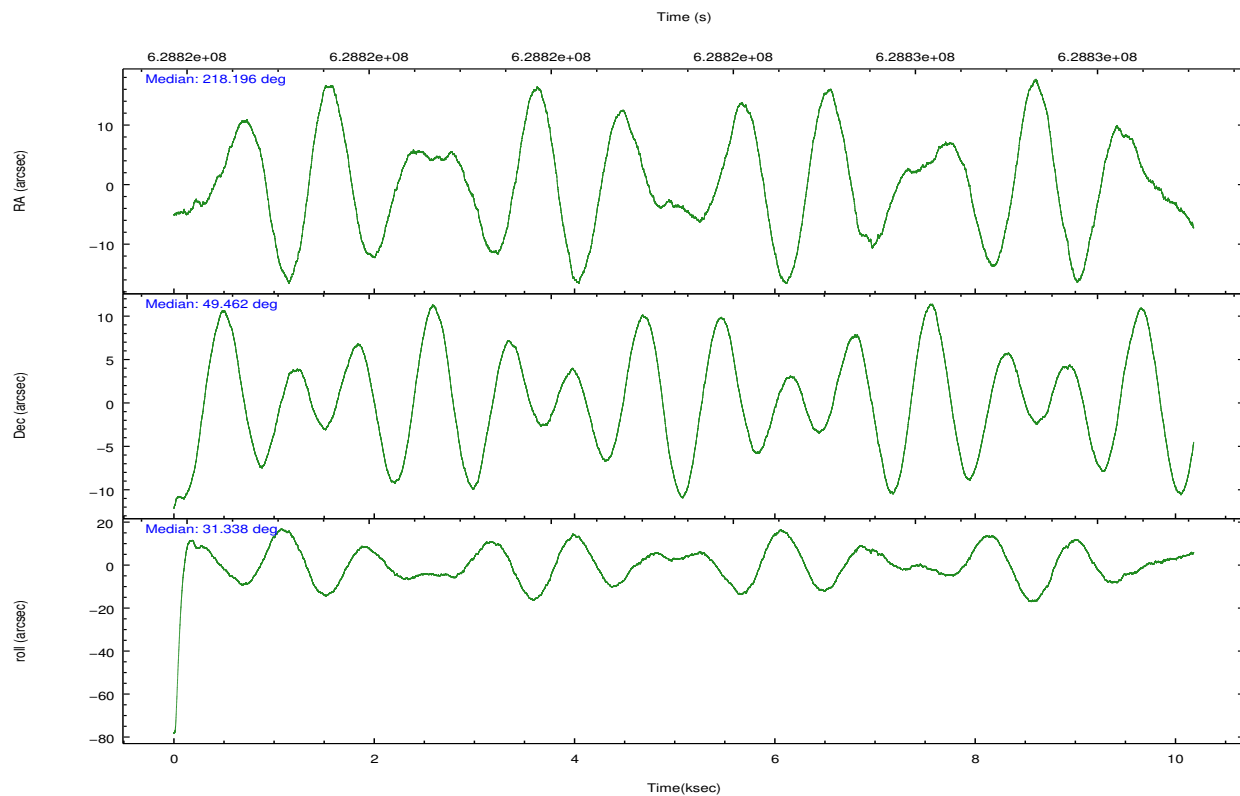
	ccd 2	ccd 3	ccd 6	ccd 7
grade 0 events	5597	2440	5103	3325
	7%	3%	6%	3%
grade 1 events	65	34	29	134
	0%	0%	0%	0%
grade 2 events	1804	1589	2081	8444
	2%	2%	2%	9%
grade 3 events	784	787	769	3274
	1%	1%	0%	3%
grade 4 events	760	789	763	3245
	1%	1%	0%	3%
grade 5 events	2868	3393	3239	9159
	3%	4%	4%	9%
grade 6 events	1448	1598	2047	21931
	1%	2%	2%	23%
grade 7 events	60482	59792	66671	42851
	81%	84%	82%	46%

2.2 Compared Parameters

Parameter	Planned	Actual	Parameter	Planned	Actual
Instrument	ACIS	ACIS	Obspar format version number	7	7
Detector	ACIS-2367	ACIS-2367	Obspar file type	PREDICTED	ACTUAL
Grating	NONE	NONE	Obspar update status	NONE	UPDATED
Data mode	FAINT	FAINT	Number of optional ACIS chips dropped	0	0
Observation mode	POINTING	POINTING	On-chip summing requested	N	N
[deg] Pointing RA	218.175880	218.1956313919857	Subarray requested	NONE	NONE
[deg] Pointing Dec	49.437903	49.46209692642148	Alternating exposures requested	N	N
[deg] Pointing Roll	31.173523	31.31502009187111	[s] Primary exposure time	0.000000	3.1
[mm] SIM focus pos	-0.684267	-0.6828225247311905			
[mm] SIM defocus	0	0.001444936568705701			
[mm] SIM translation stage pos	-190.132523	-190.1400660498719			
[mm] SIM translation stage offset	0	0.00754346686406393			
[s] Observation start time (MET)	628818556.184000	628817436.11484			
Observation start date	2017-12-04T23:48:07	2017-12-04T23:30:36			
[s] Observation end time (MET)	628828556.184000	628829509.07805			
Observation end date	2017-12-05T02:34:47	2017-12-05T02:51:49			
Read mode	TIMED	TIMED			

2.3 Aspect



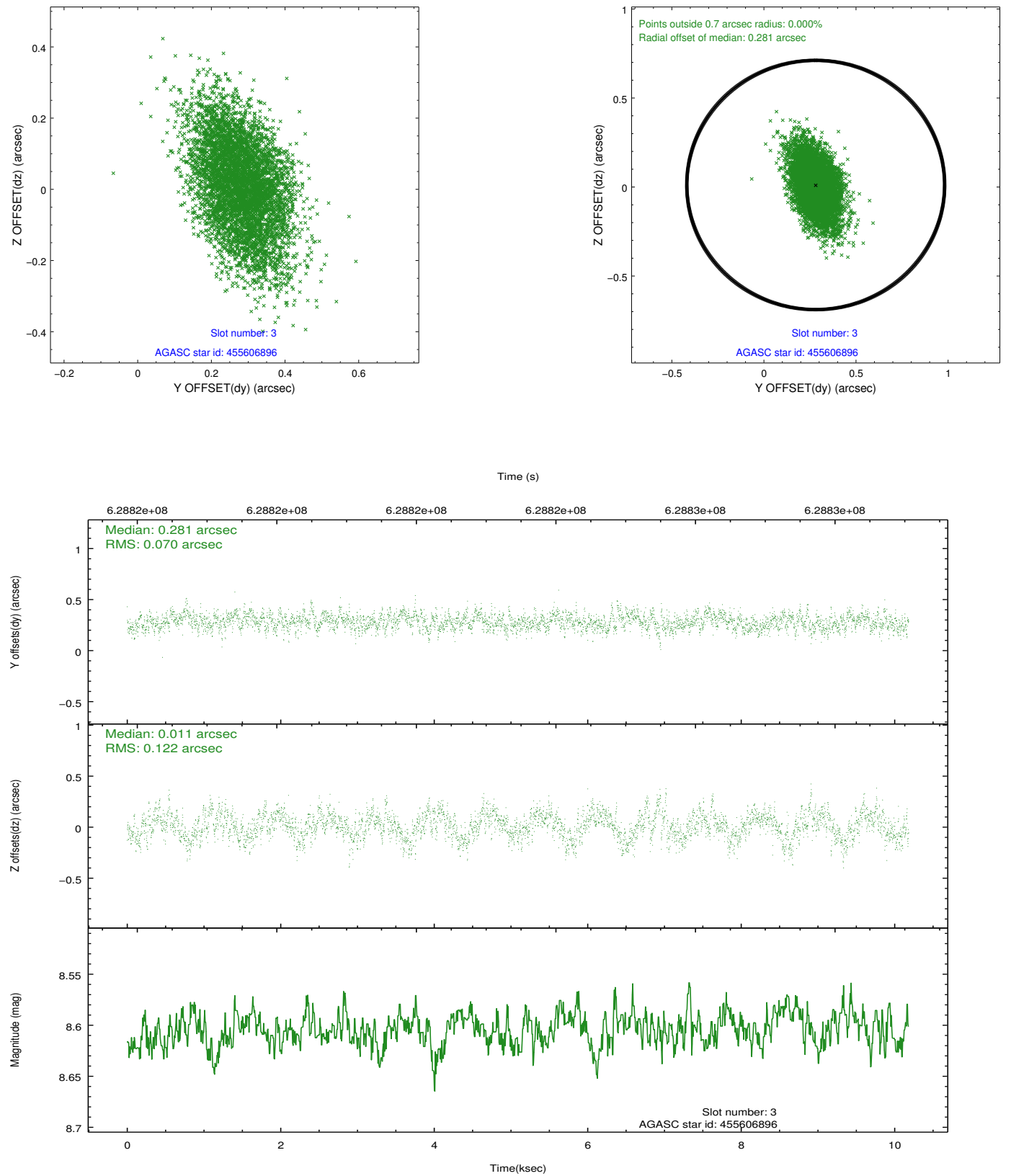


Slot Statistics

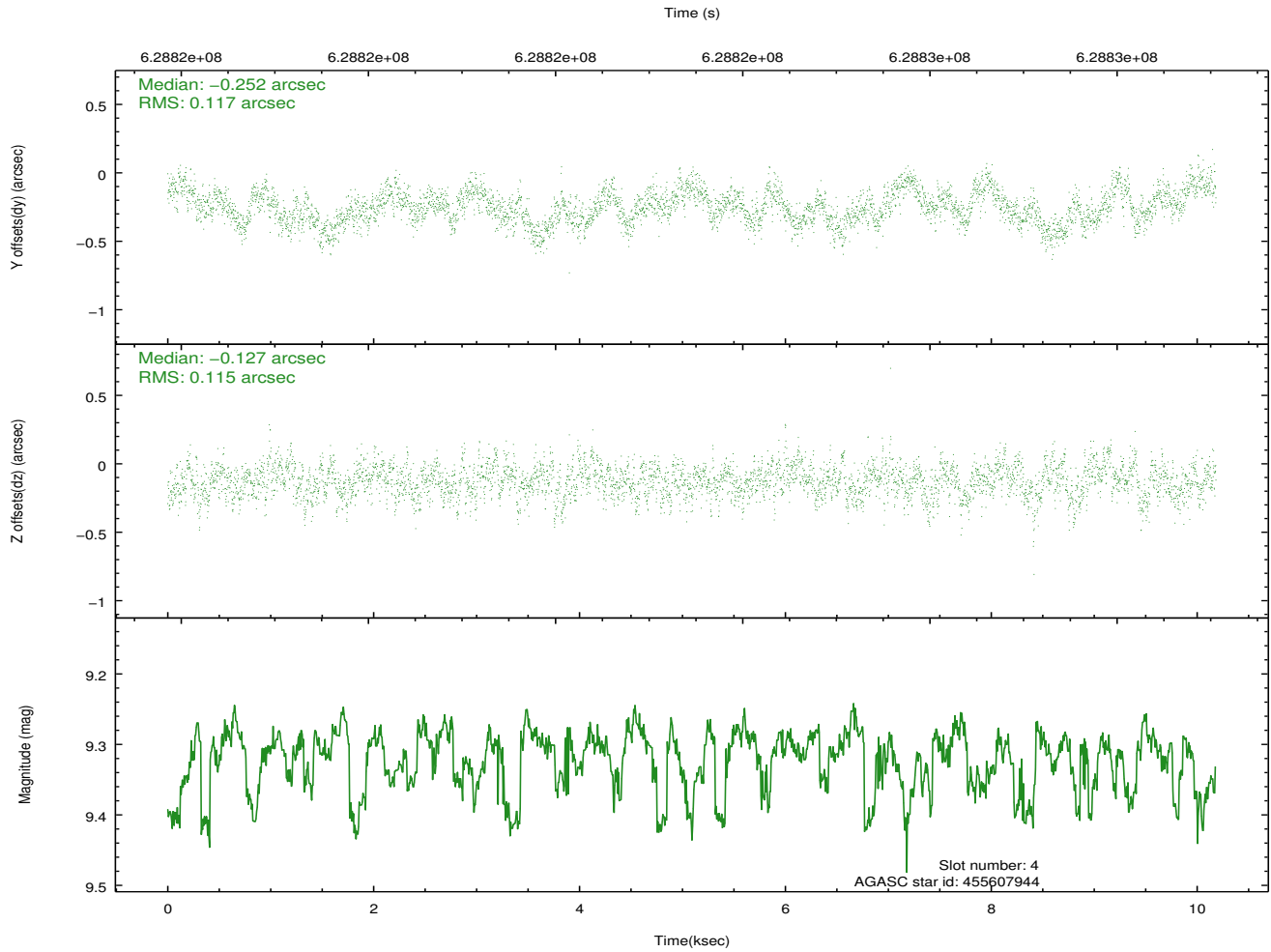
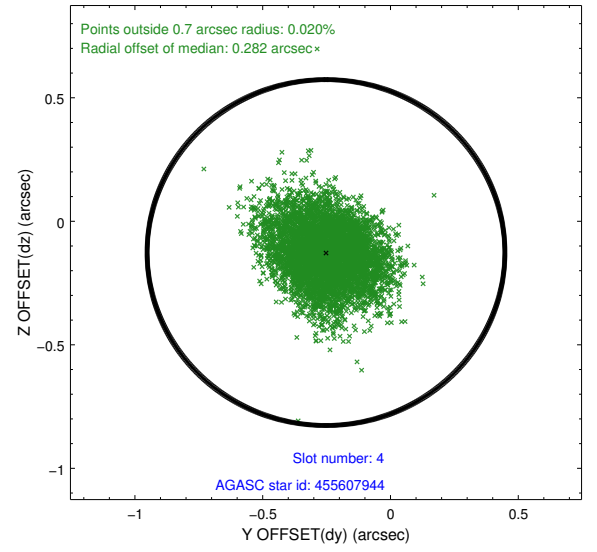
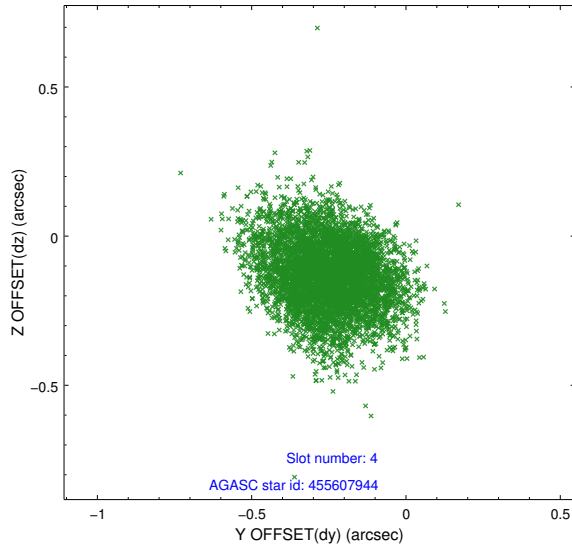
slot	status	used	id	mag	n_pts	med_dy	med_dz	dr1	dr2	ra	dec	mean_y	mean_z
0	FID		ACIS-S-1	7.12	2483	0.283	-0.073	0.010	0.015	0.000000	0.000000	929.26	-1735.98
1	FID		ACIS-S-2	7.02	2484	-0.152	-0.067	0.017	0.040	0.000000	0.000000	-766.79	-1741.18
2	FID		ACIS-S-5	7.13	2484	-0.155	0.145	0.015	0.030	0.000000	0.000000	-1820.70	161.05
3	GUIDE	used	455606896	8.60	4962	0.281	0.011	0.145	0.254	217.965544	49.585684	-143.31	710.22
4	GUIDE	used	455607944	9.31	4960	-0.252	-0.127	0.174	0.279	218.236903	49.738369	681.89	852.06
5	GUIDE	used	455609184	8.93	4962	0.279	0.161	0.148	0.252	217.709184	49.285974	-1218.23	102.56
6	GUIDE	used	455617024	9.13	4959	-0.057	-0.052	0.160	0.272	218.810986	49.787432	1917.41	317.97
7	GUIDE	used	455999560	8.62	4963	-0.250	0.009	0.148	0.251	218.558280	50.025741	1851.62	1357.19

2.4 Star Slots

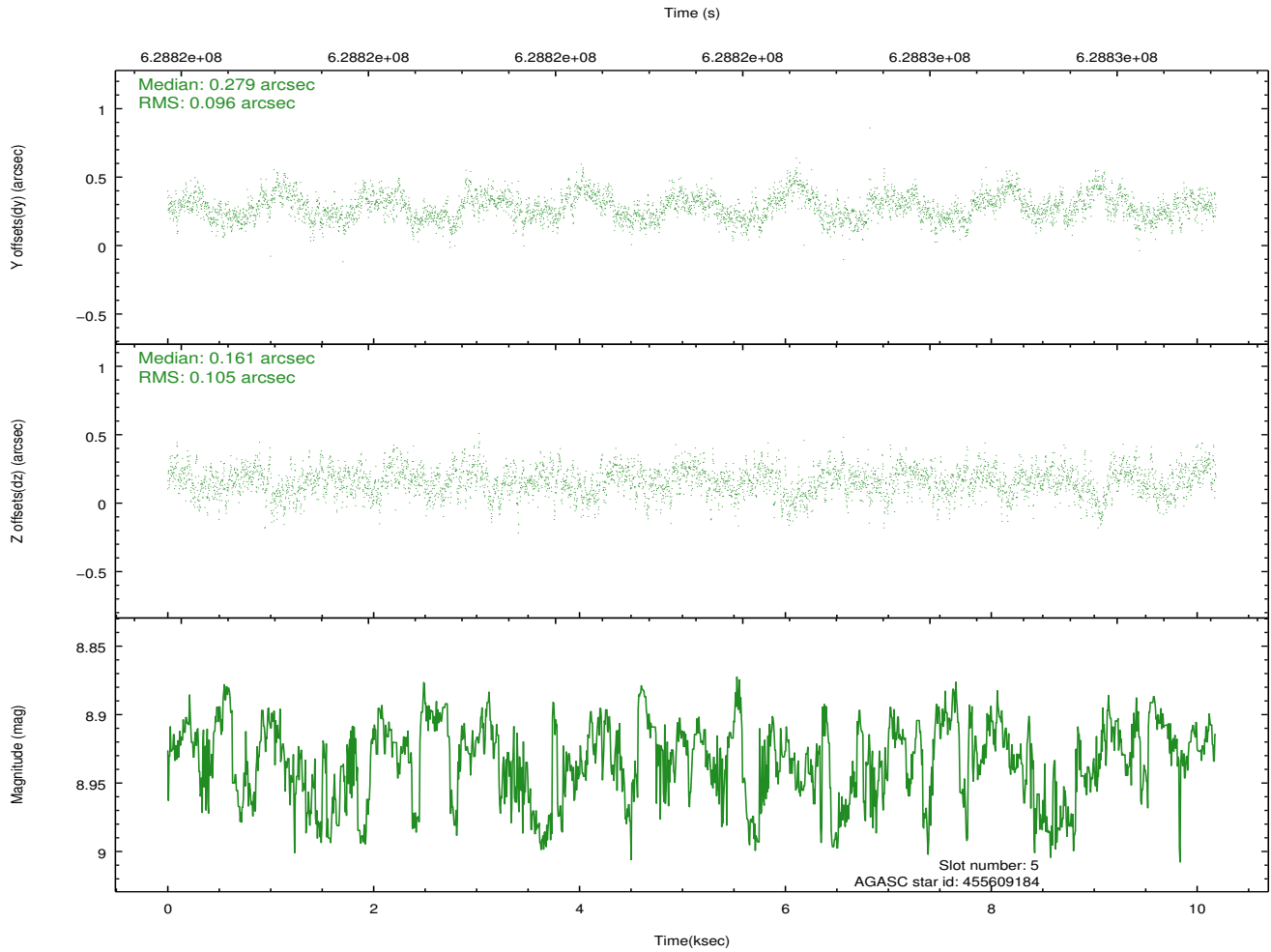
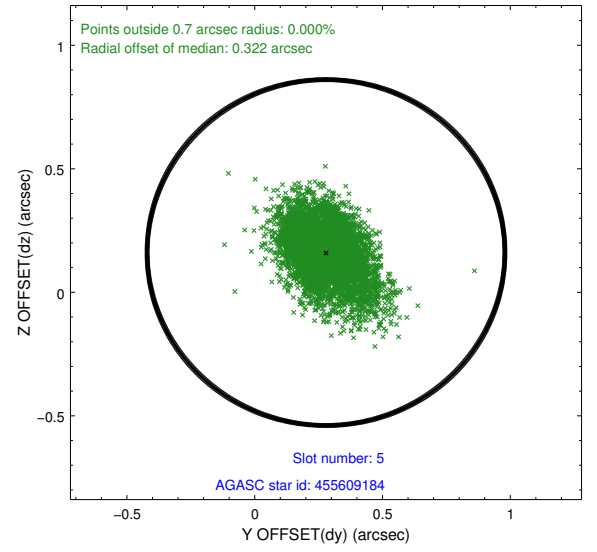
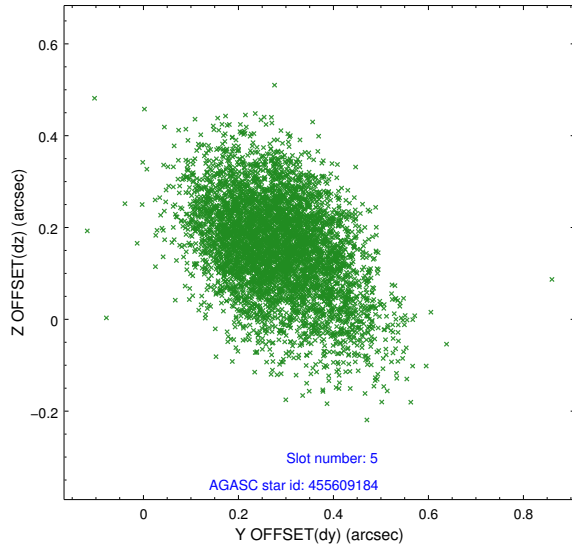
2.4.1 Slot 3



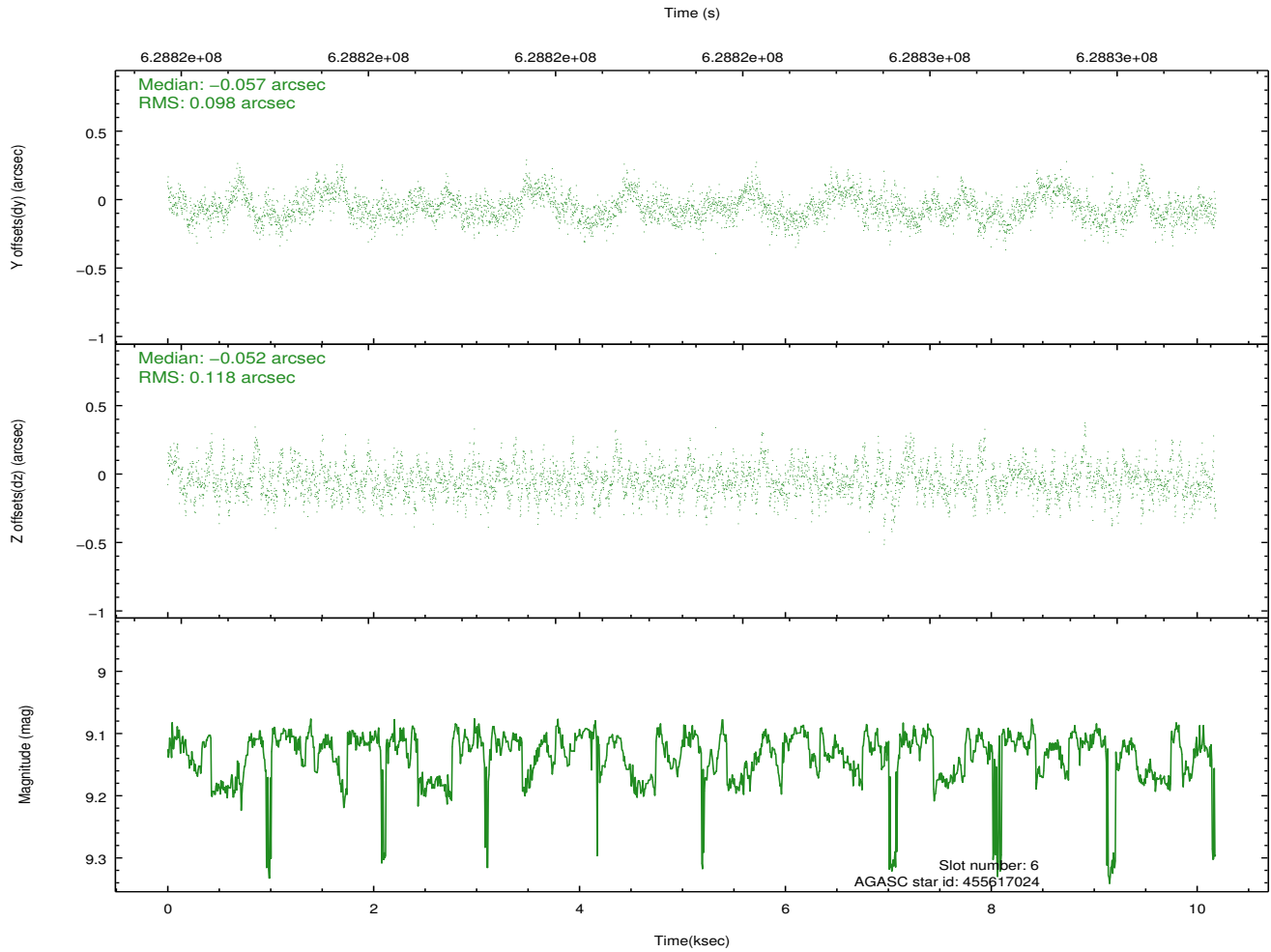
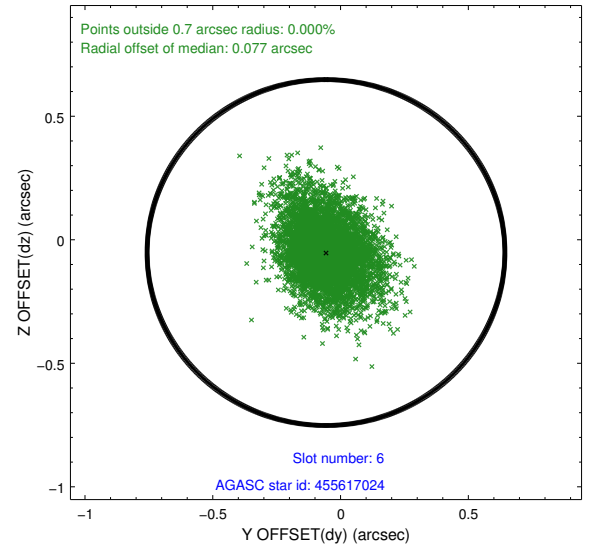
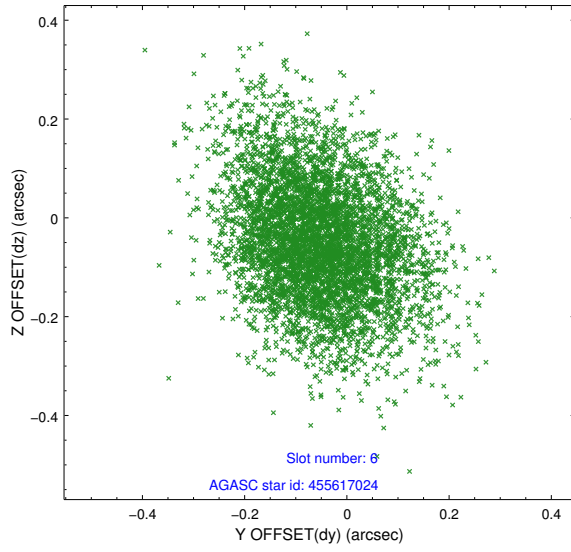
2.4.2 Slot 4



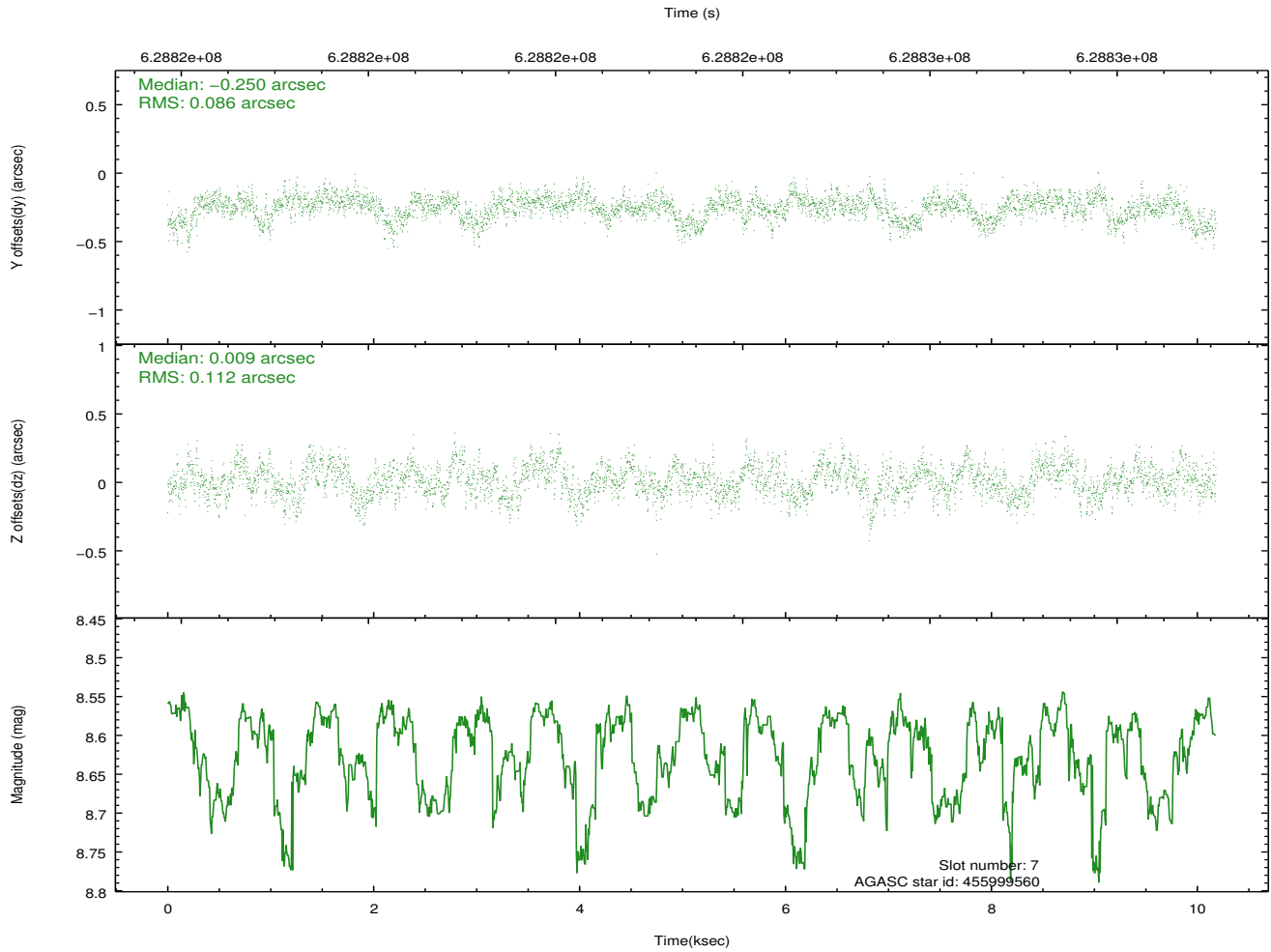
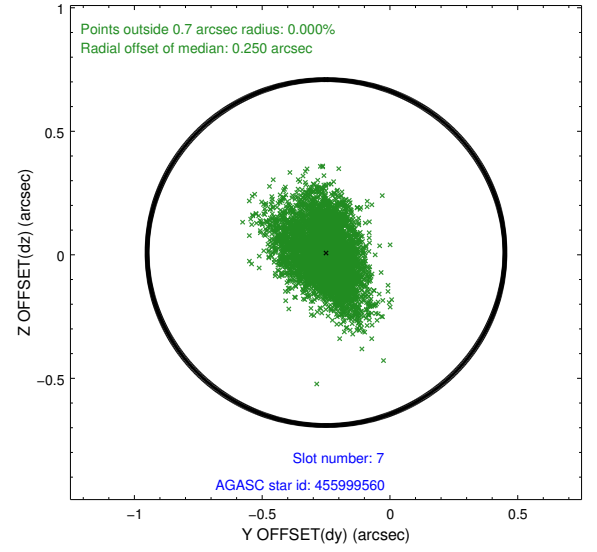
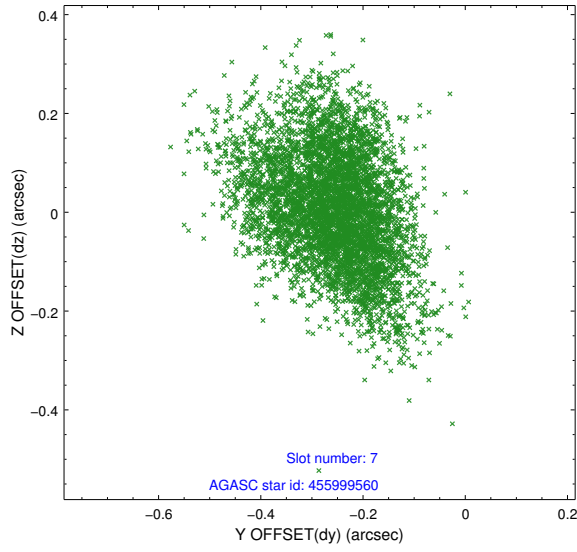
2.4.3 Slot 5



2.4.4 Slot 6

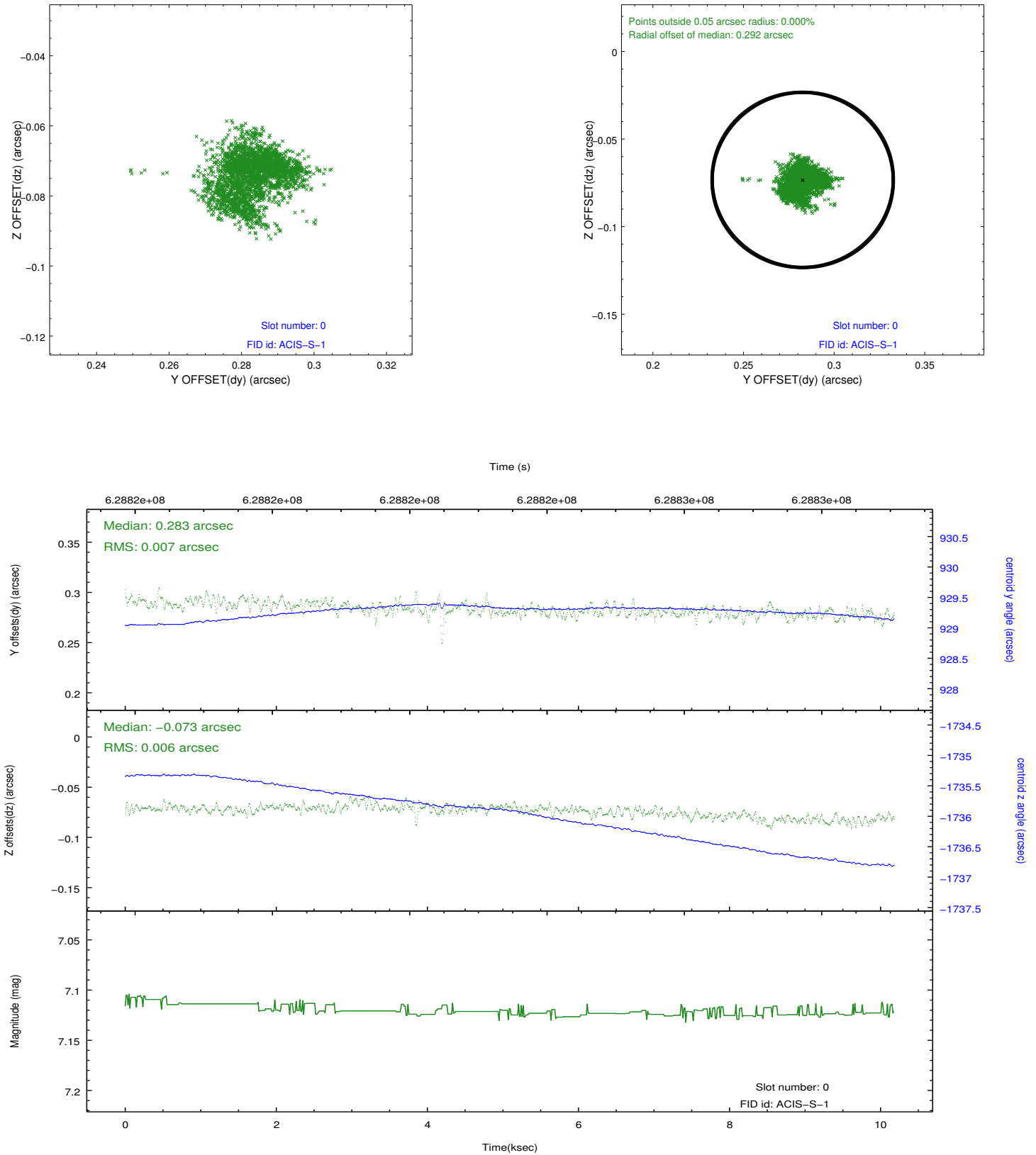


2.4.5 Slot 7

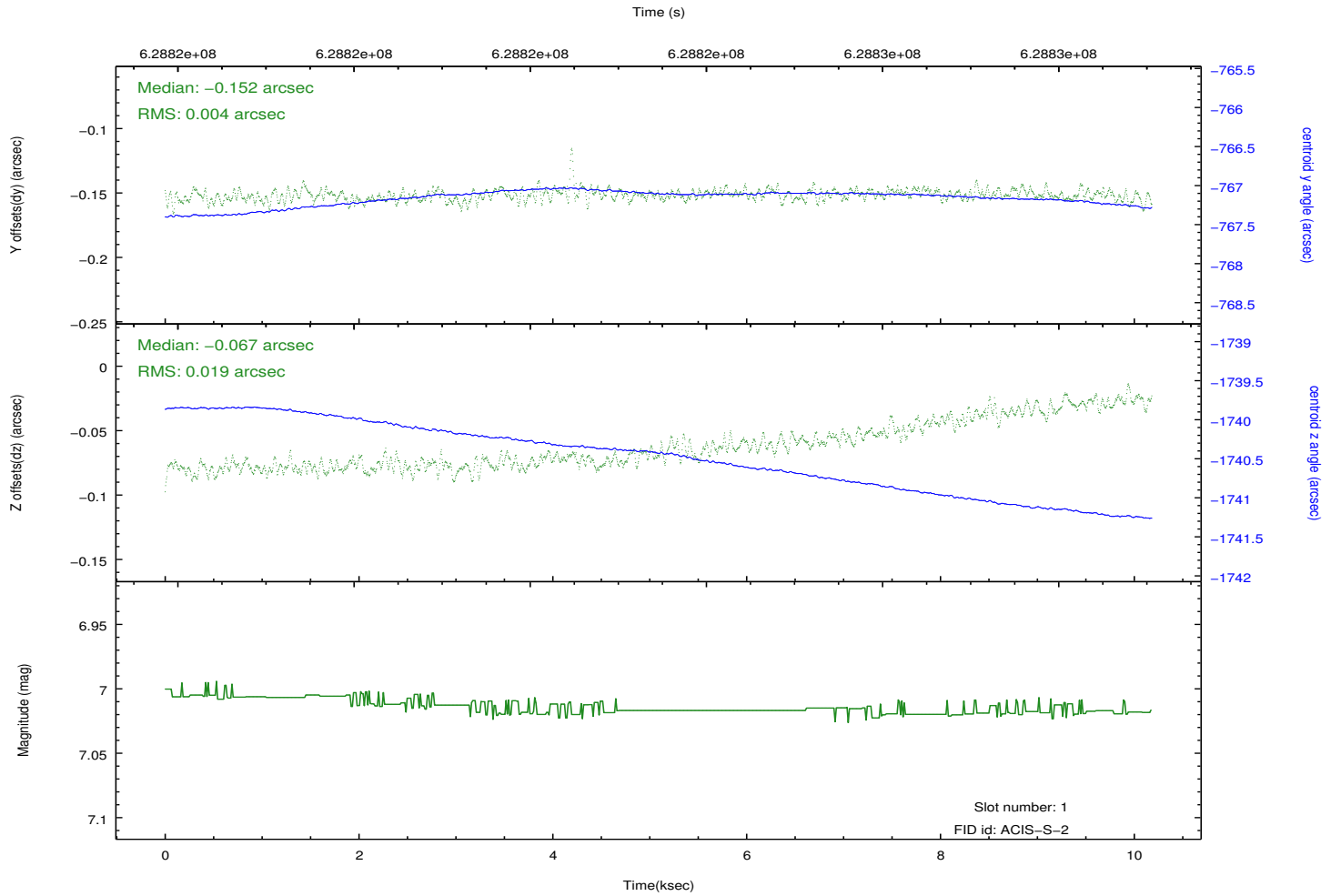
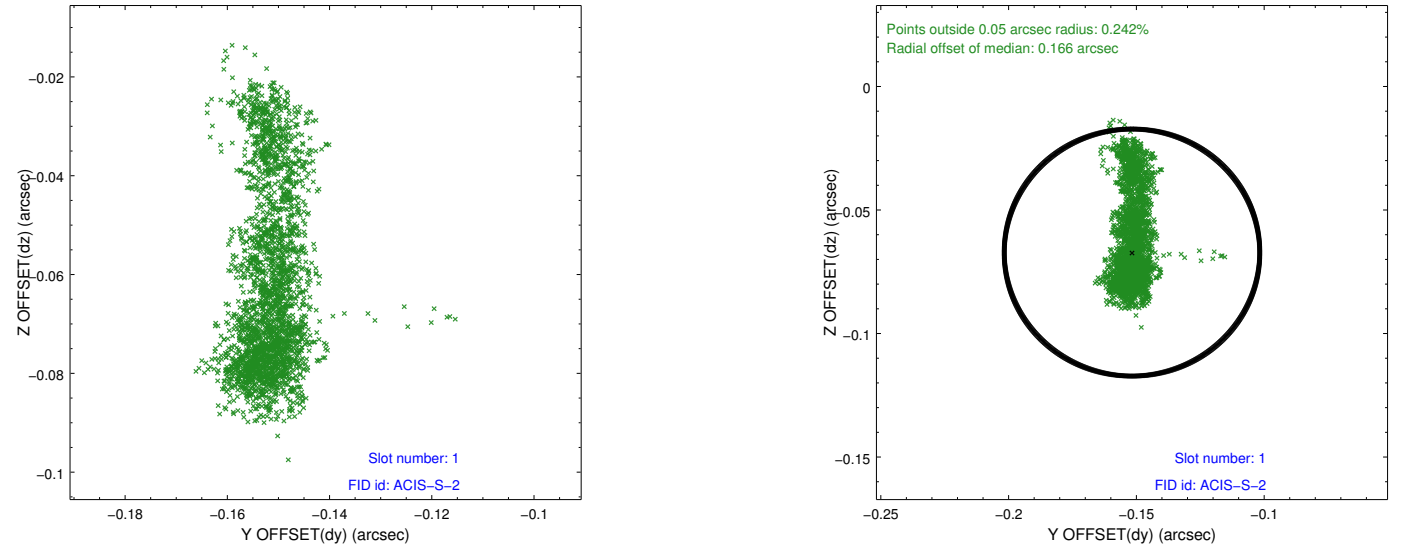


2.5 FID Slots

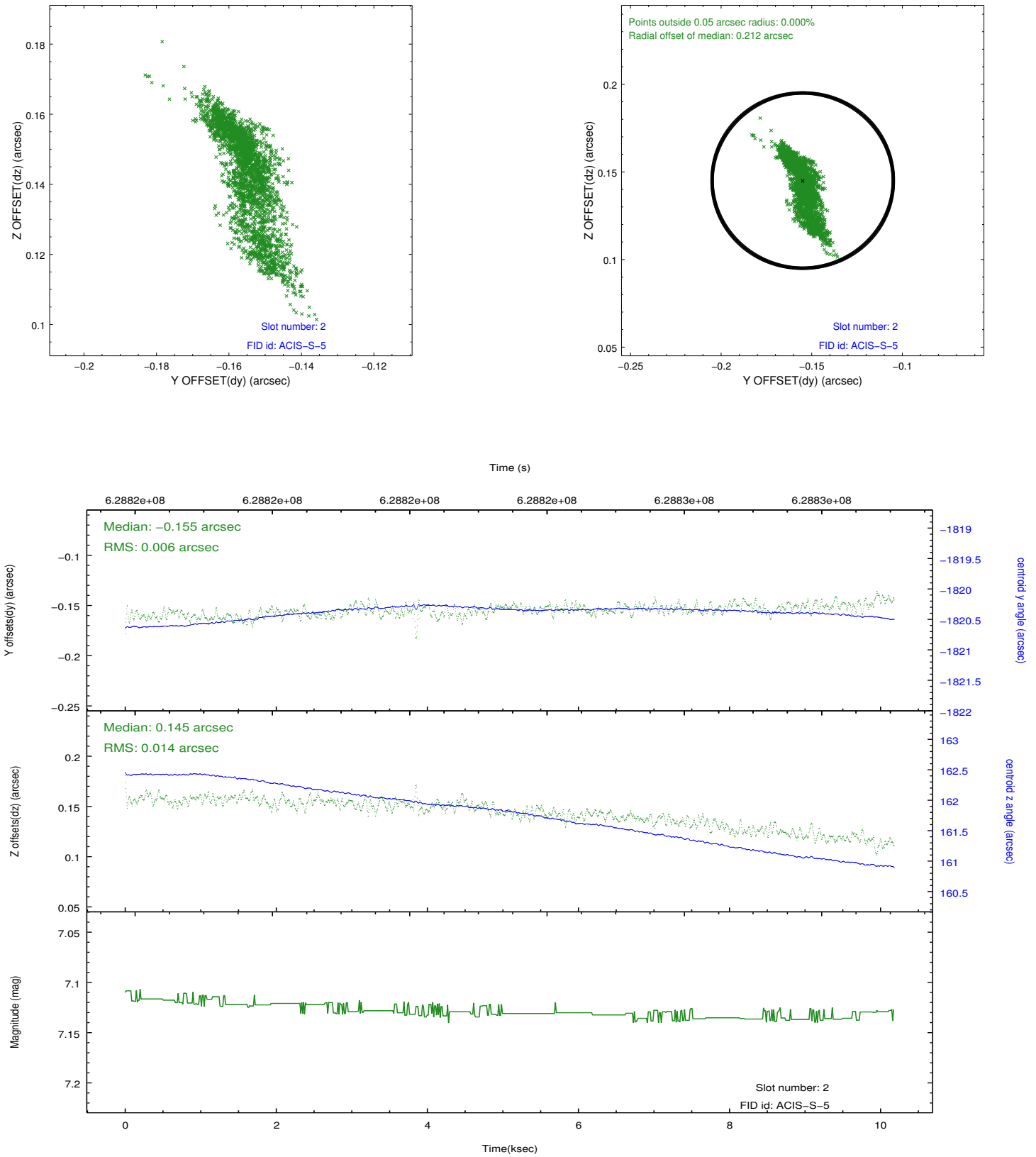
2.5.1 Slot 0



2.5.2 Slot 1



2.5.3 Slot 2



A Summary

A.1 Status

V&V Scientist	Jen Lauer
V&V Date (YYYY-MM-DD)	2017.12.05
V&V Edition	1
V&V Disposition and Status	OK
V&V Charge Time	10.067952421904

A.2 Comments