

V&V Reference Report

L2 ASCDS Version : 10.5.2

Observation 19324 - L2 Version 1
Chandra X-Ray Center

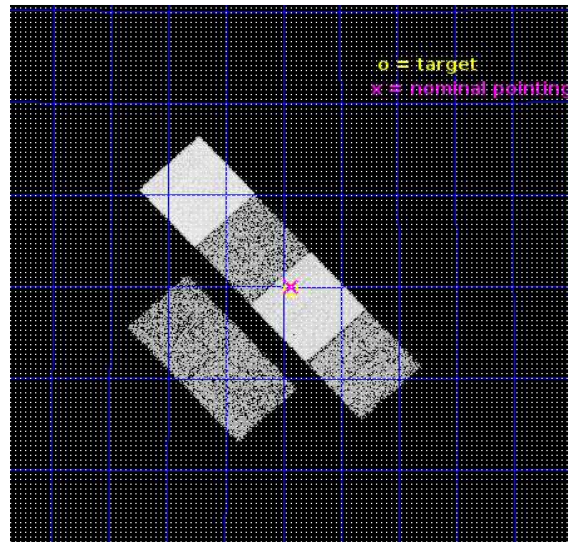
L2 Processing Date : Dec 17 2016

Contents

1	Front	2
2	OBI	3
2.1	OBI	3
2.1.1	Images	3
2.1.2	Bias	3
2.1.3	Parameters	4
2.1.4	Events	4
2.2	Compared Parameters	5
2.3	Aspect	6
2.4	Star Slots	9
2.4.1	Slot 3	9
2.4.2	Slot 4	10
2.4.3	Slot 5	11
2.4.4	Slot 6	12
2.4.5	Slot 7	13
2.5	FID Slots	14
2.5.1	Slot 0	14
2.5.2	Slot 1	15
2.5.3	Slot 2	16
A	Summary	17
A.1	Status	17
A.2	Comments	17

1 Front

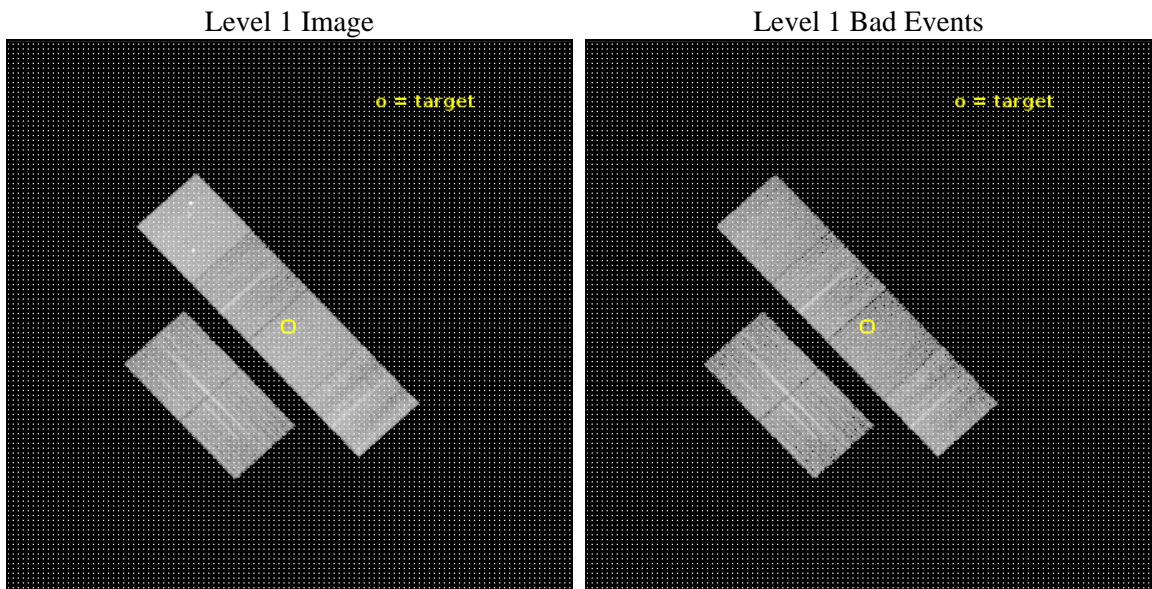
seq_num	601281	Sequence number
obs_id	19324	Observation id
title	A homogeneous view of X-ray halos in massive early-type galaxies	P
observer	Andy Goulding	Principal investigator
object	NGC5557	Source name
dtcycle	0	
cycle	P	events from which exps? Prim/Second/Both
ra_targ	214.607083	Observer's specified target RA [deg]
dec_targ	36.493611	Observer's specified target Dec [deg]
ra_nom	214.60659479114	Nominal RA [deg]
dec_nom	36.500015482831	Nominal Dec [deg]
roll_nom	47.156958647288	Nominal Roll [deg]
revision	1	Processing version of data
ontime	8947.2001333237	Sum of GTIs [s]
livetime	8833.9052978784	Livetime [s]
ontime2	8947.2001333237	Sum of GTIs [s]
ontime3	8947.2001333237	Sum of GTIs [s]
ontime5	8947.2001333237	Sum of GTIs [s]
ontime6	8947.2001333237	Sum of GTIs [s]
ontime7	8947.2001333237	Sum of GTIs [s]
ontime8	8947.2001333237	Sum of GTIs [s]
l2events	107014	Number of level 2 events



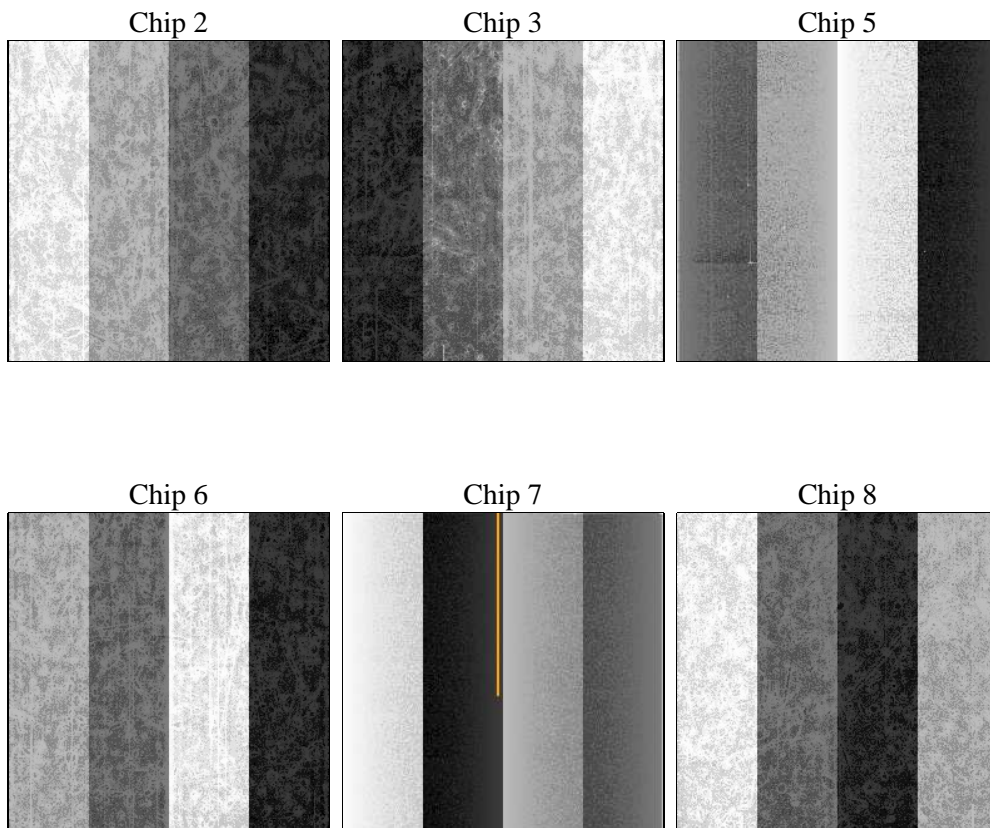
2 OBI

2.1 OBI

2.1.1 Images



2.1.2 Bias



2.1.3 Parameters

obi_num	0	Obi number	sched_exp_time	9000.000000	[s] Scheduled observation exposure time
ascdsver	10.5.2	Processing system revision	ontime	8947.2001333237	Sum of GTIs [s]
caldbver	4.7.3	 	ontime2	8947.2001333237	Sum of GTIs [s]
date	2016-12-17T15:25:52	Date and time of file creation	ontime3	8947.2001333237	Sum of GTIs [s]
revision	1	Processing version of data	ontime5	8947.2001333237	Sum of GTIs [s]
			ontime6	8947.2001333237	Sum of GTIs [s]
			ontime7	8947.2001333237	Sum of GTIs [s]
			ontime8	8947.2001333237	Sum of GTIs [s]
			l1events	458595	Number of level 1 events

2.1.4 Events

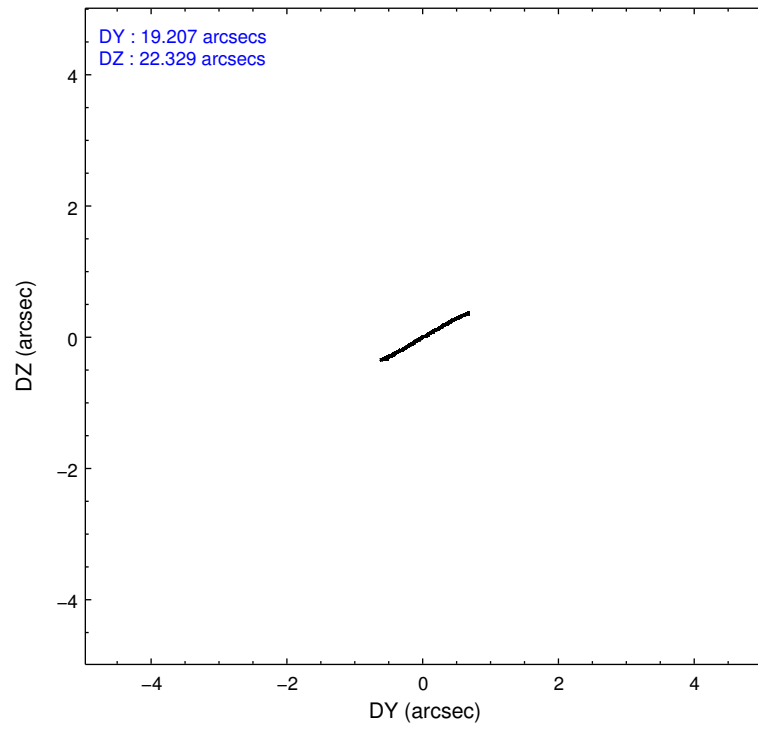
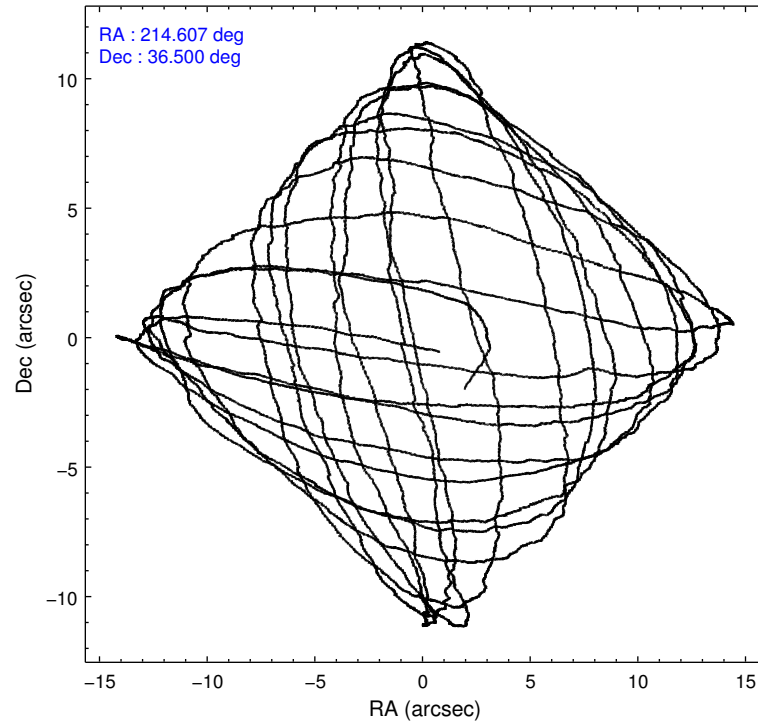
	ccd 2	ccd 3	ccd 5	ccd 6	ccd 7	ccd 8		ccd 2	ccd 3	ccd 5	ccd 6	ccd 7	ccd 8
level 1 events	63970	61454	102639	65490	81301	83741	grade 0 events	2439	2480	5335	2460	3193	6601
rejected events	57008	54848	52031	58060	45248	60979		3%	4%	5%	3%	3%	7%
rejected %	89%	89%	50%	88%	55%	72%	grade 1 events	34	30	369	40	115	59
								0%	0%	0%	0%	0%	0%
							grade 2 events	1806	1435	15725	1759	7762	5529
								2%	2%	15%	2%	9%	6%
							grade 3 events	675	681	1630	764	2997	2295
								1%	1%	1%	1%	3%	2%
							grade 4 events	703	676	1641	761	2933	2223
								1%	1%	1%	1%	3%	2%
							grade 5 events	2589	3061	7355	2968	8494	4546
								4%	4%	7%	4%	10%	5%
							grade 6 events	1339	1340	26316	1689	19188	6161
								2%	2%	25%	2%	23%	7%
							grade 7 events	54385	51751	44268	55049	36619	56327
								85%	84%	43%	84%	45%	67%

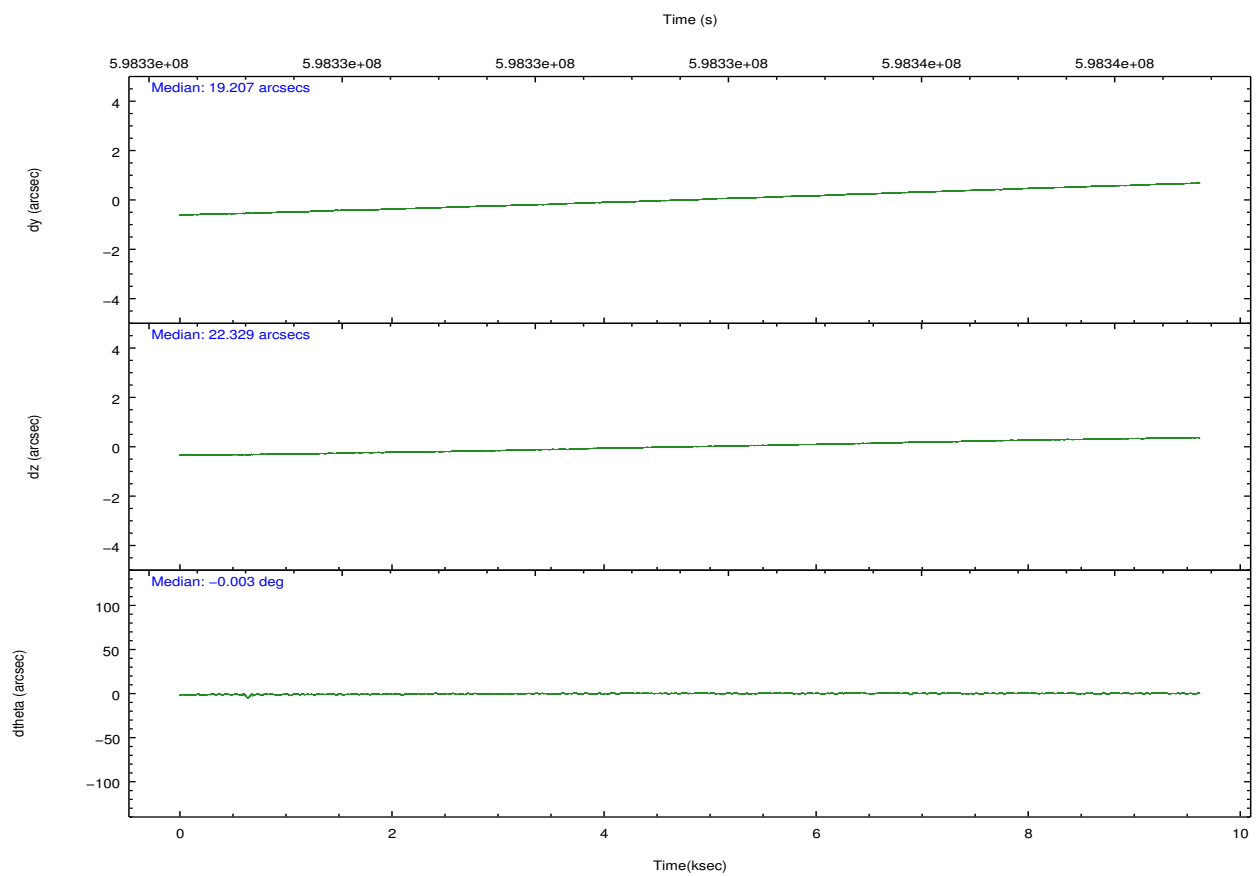
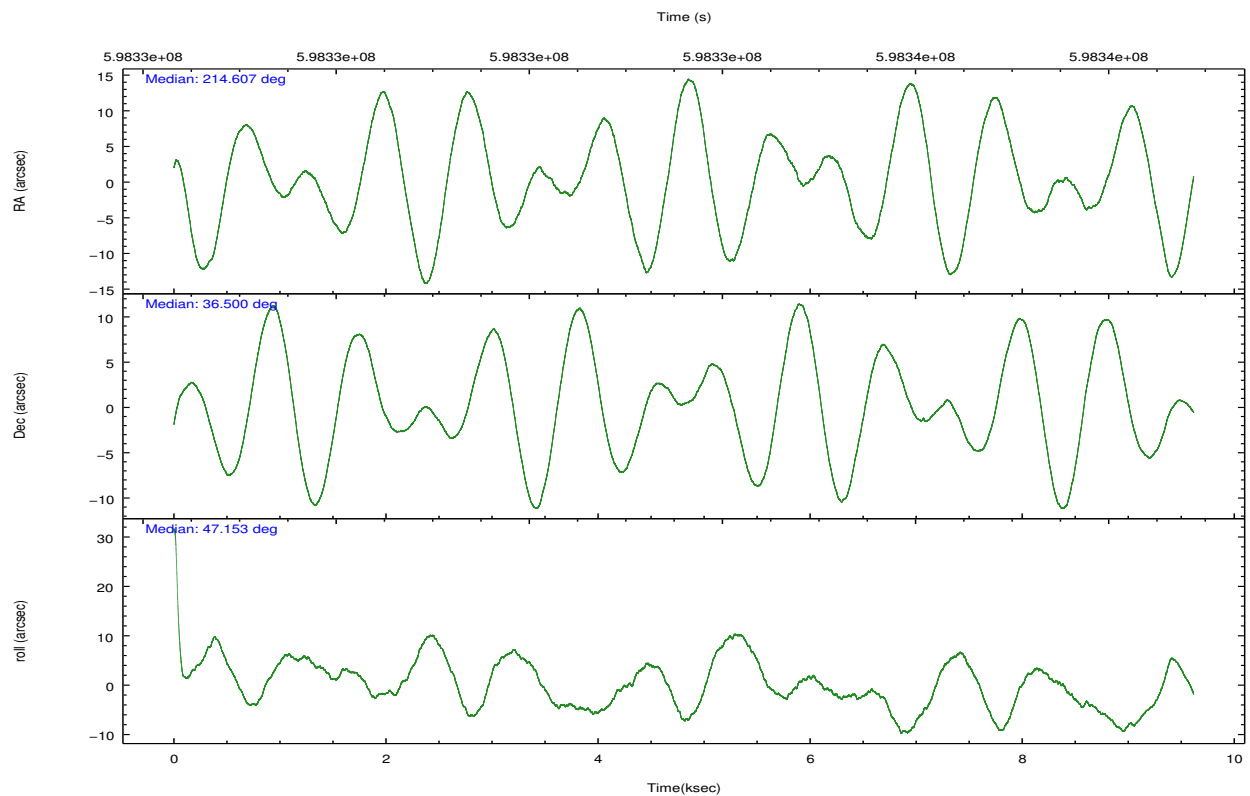
2.2 Compared Parameters

Parameter	Planned	Actual
Instrument	ACIS	ACIS
Detector	ACIS-235678	ACIS-235678
Grating	NONE	NONE
Data mode	VFAINT	VFAINT
Observation mode	POINTING	POINTING
[deg] Pointing RA	214.599554	214.6065947911365
[deg] Pointing Dec	36.473185	36.50001548283127
[deg] Pointing Roll	47.004474	47.15695864728781
[mm] SIM focus pos	-0.684267	-0.6828225247311905
[mm] SIM defocus	0	0.001444936568705701
[mm] SIM translation stage pos	-190.132523	-190.1425803651734
[mm] SIM translation stage offset	0	0.01005778216563158
[s] Observation start time (MET)	598329414.184000	598328236.8764
Observation start date	2016-12-17T02:35:46	2016-12-17T02:17:16
[s] Observation end time (MET)	598338414.184000	598339303.2895401
Observation end date	2016-12-17T05:05:46	2016-12-17T05:21:43
Read mode	TIMED	TIMED

Parameter	Planned	Actual
Obspar format version number	7	7
Obspar file type	PREDICTED	ACTUAL
Obspar update status	NONE	UPDATED
CCD I0 on	N	N
CCD I1 on	N	N
CCD I2 on	O1	Y
CCD I3 on	O2	Y
CCD S0 on	N	N
CCD S1 on	Y	Y
CCD S2 on	Y	Y
CCD S3 on	Y	Y
CCD S4 on	Y	Y
CCD S5 on	N	N
Number of optional ACIS chips dropped	0	0
On-chip summing requested	N	N
Subarray requested	NONE	NONE
Alternating exposures requested	N	N
[s] Primary exposure time	0.000000	3.2

2.3 Aspect



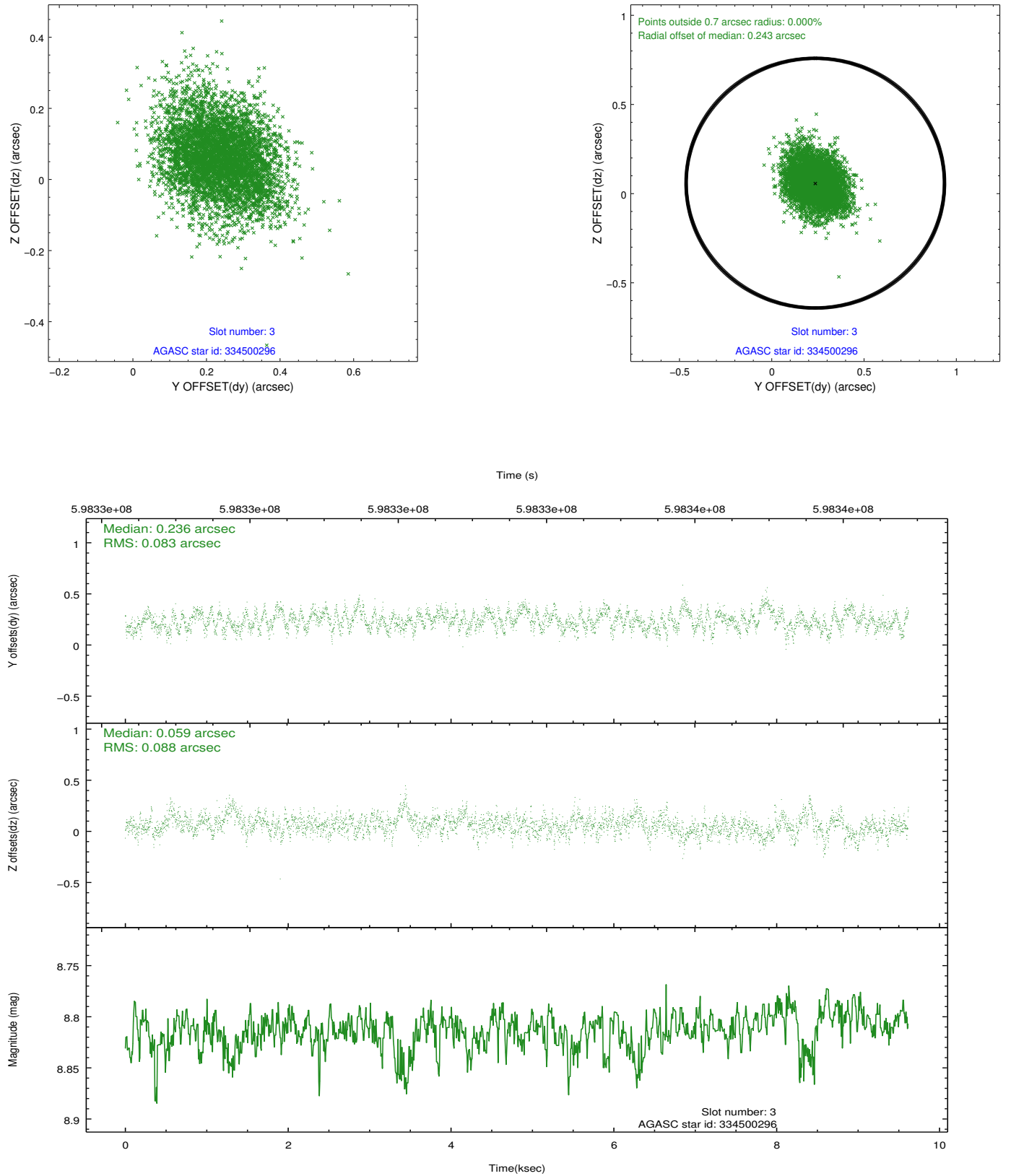


Slot Statistics

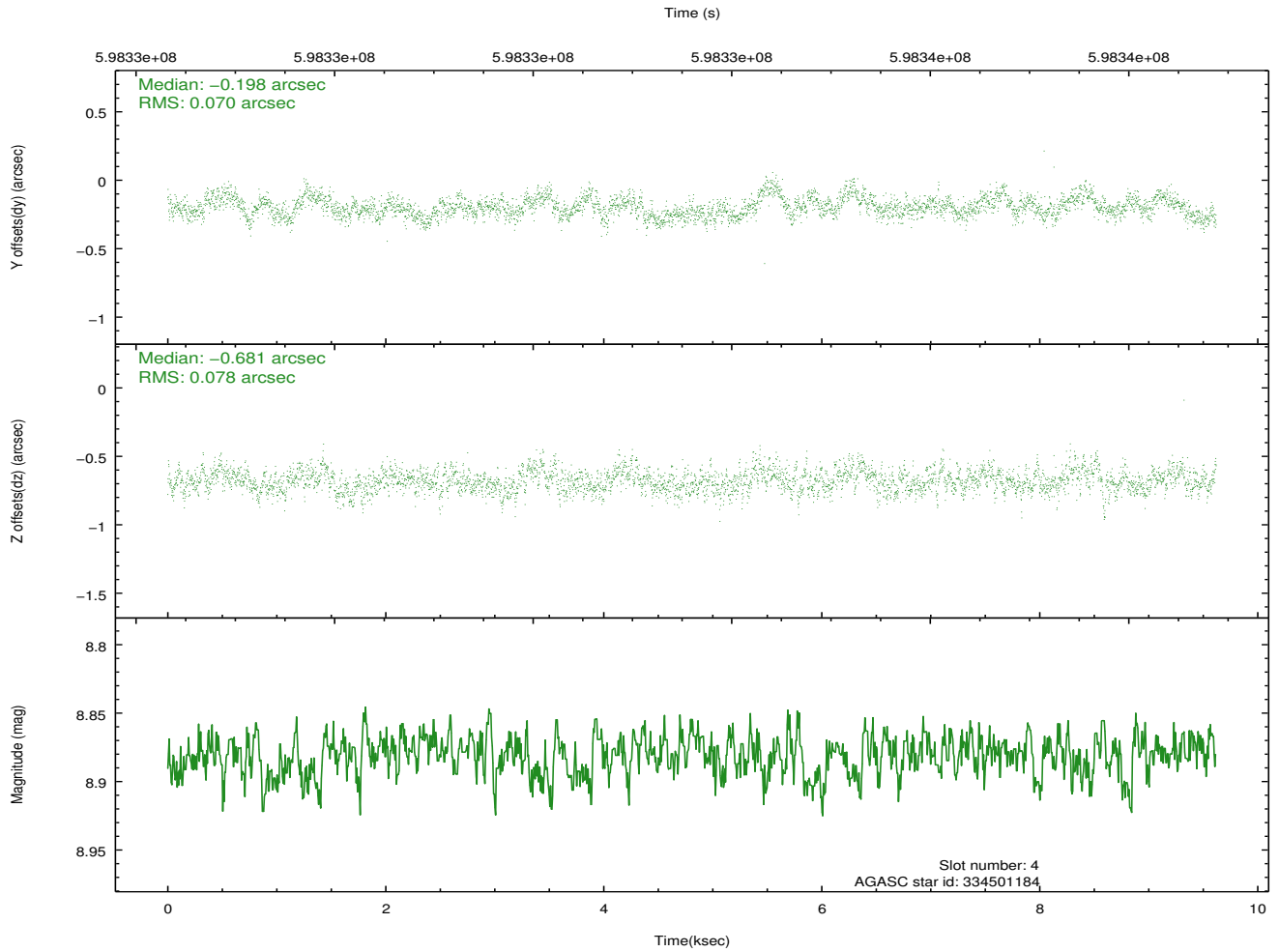
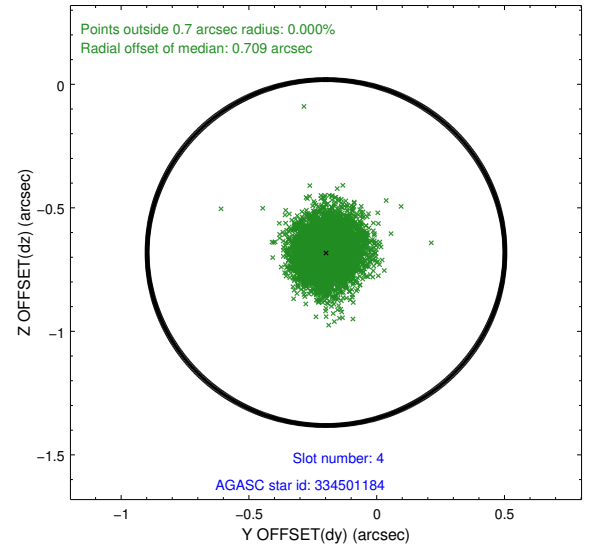
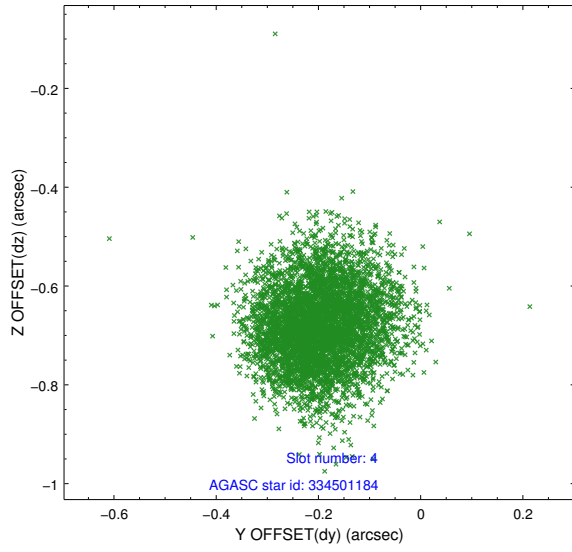
slot	status	used	id	mag	n_pts	med_dy	med_dz	dr1	dr2	ra	dec	mean_y	mean_z
0	FID		ACIS-S-2	7.02	2346	-0.211	-0.155	0.012	0.019	0.000000	0.000000	-772.54	-1744.00
1	FID		ACIS-S-4	7.14	2346	0.477	0.143	0.009	0.014	0.000000	0.000000	2141.19	164.16
2	FID		ACIS-S-5	7.14	2346	-0.298	0.020	0.009	0.016	0.000000	0.000000	-1824.73	158.39
3	GUIDE	used	334500296	8.81	4687	0.236	0.059	0.127	0.210	215.436203	36.400751	1470.94	-1943.38
4	GUIDE	used	334501184	8.88	4693	-0.198	-0.681	0.112	0.177	214.124254	36.665460	-426.82	1477.35
5	GUIDE	used	334503136	9.39	4689	0.036	0.888	0.149	0.243	214.385434	35.754153	-2318.98	-1305.95
6	GUIDE	used	334498120	9.70	4690	-0.205	0.142	0.213	0.354	215.492635	36.701909	2368.63	-1315.44
7	GUIDE	used	334500768	9.77	4687	0.127	-0.428	0.260	0.412	213.684938	36.264131	-2350.77	1436.55

2.4 Star Slots

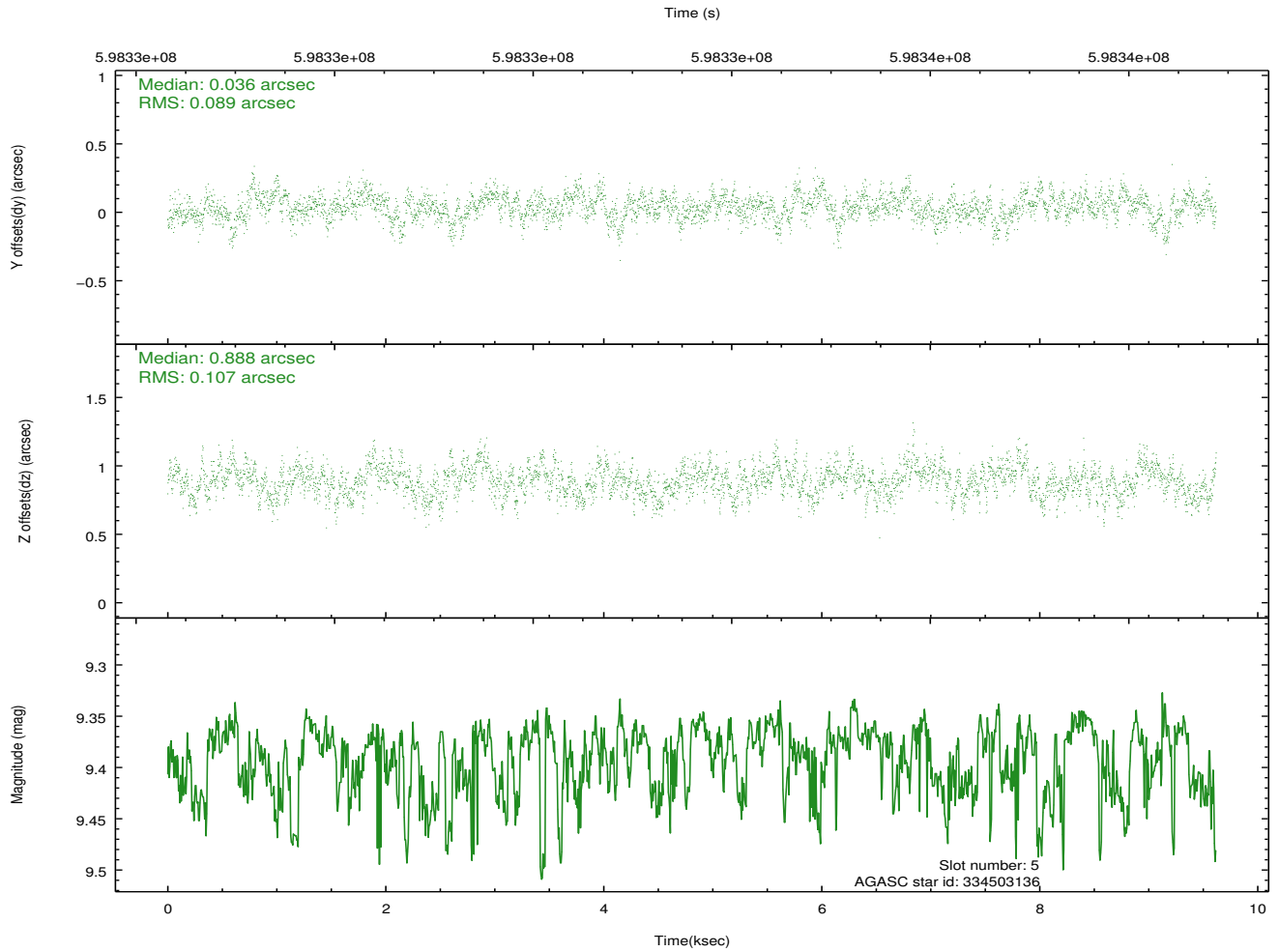
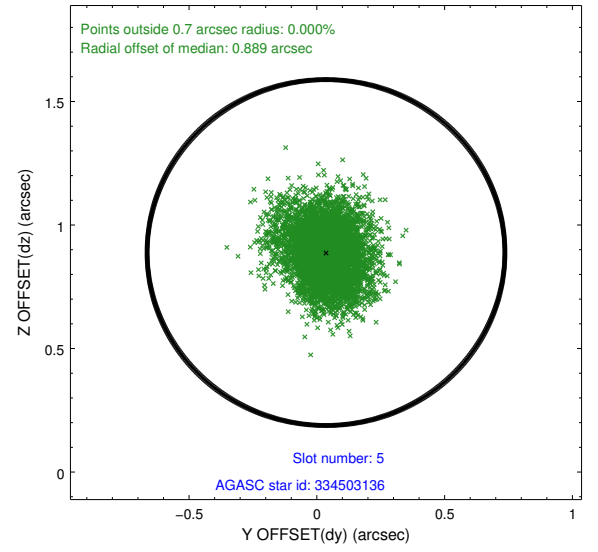
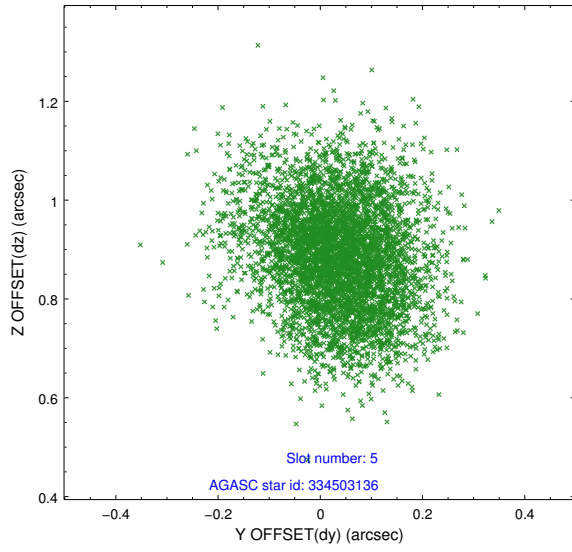
2.4.1 Slot 3



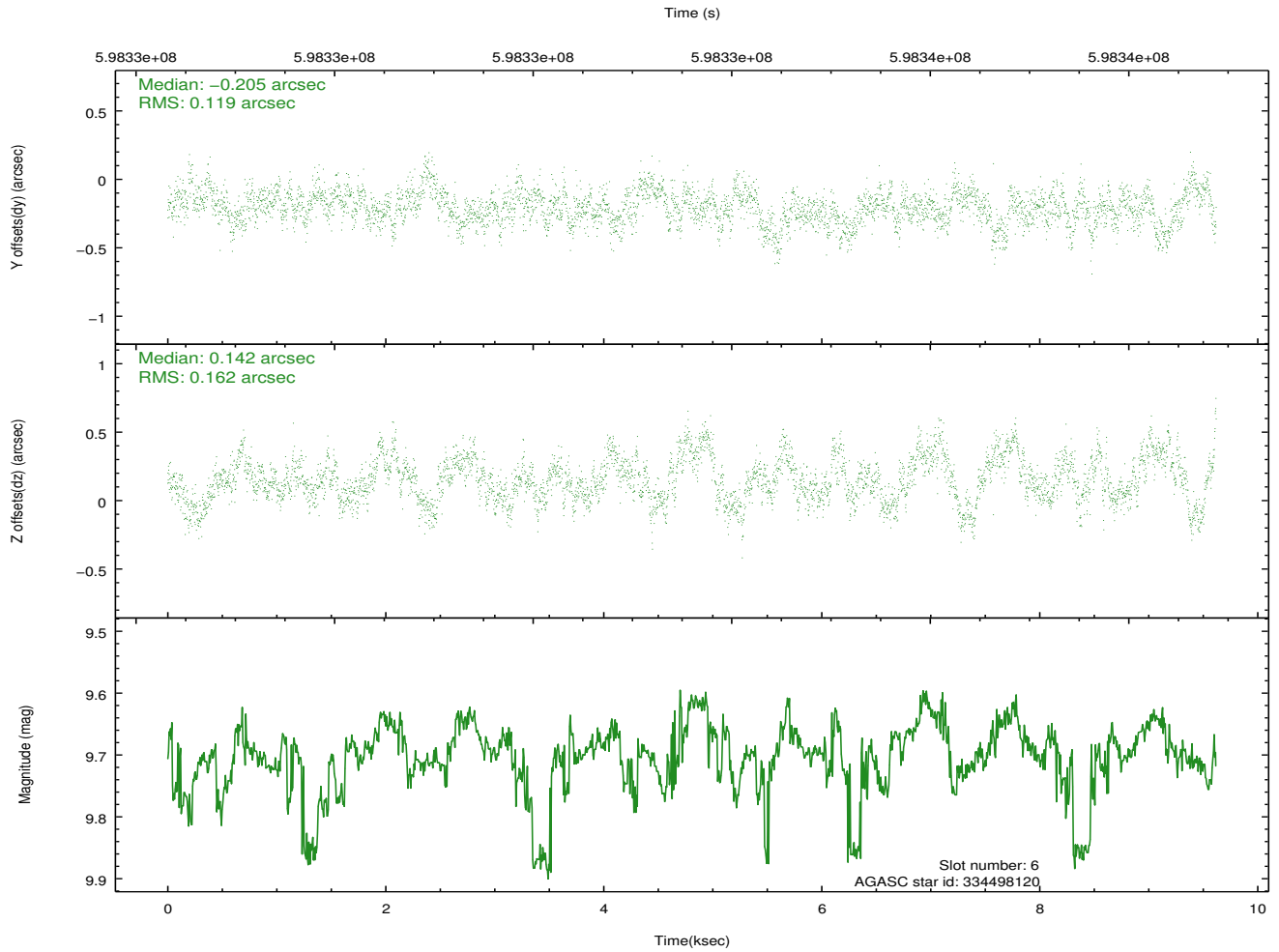
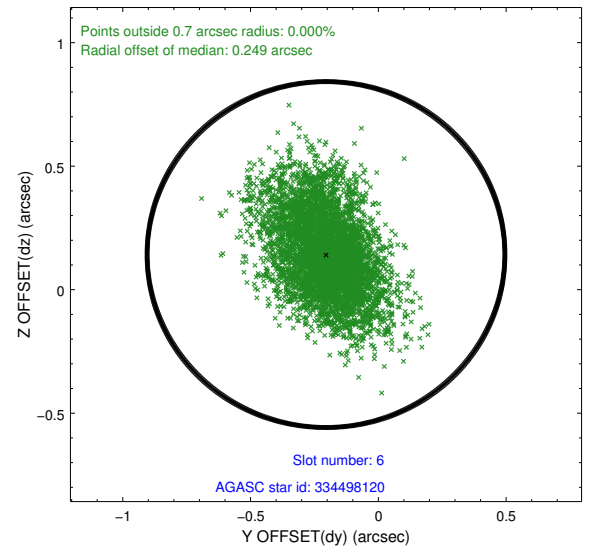
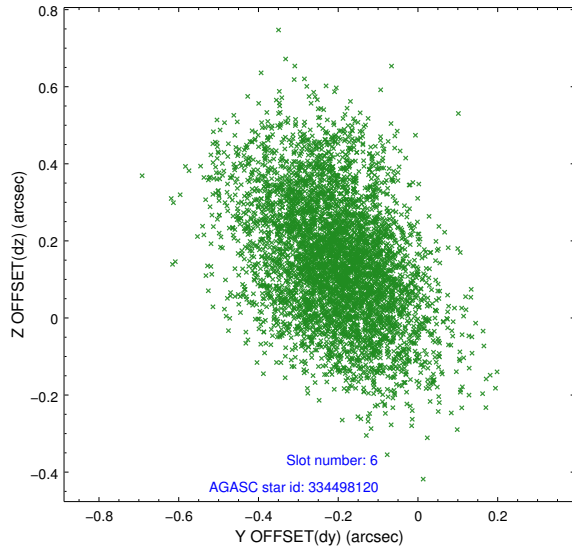
2.4.2 Slot 4



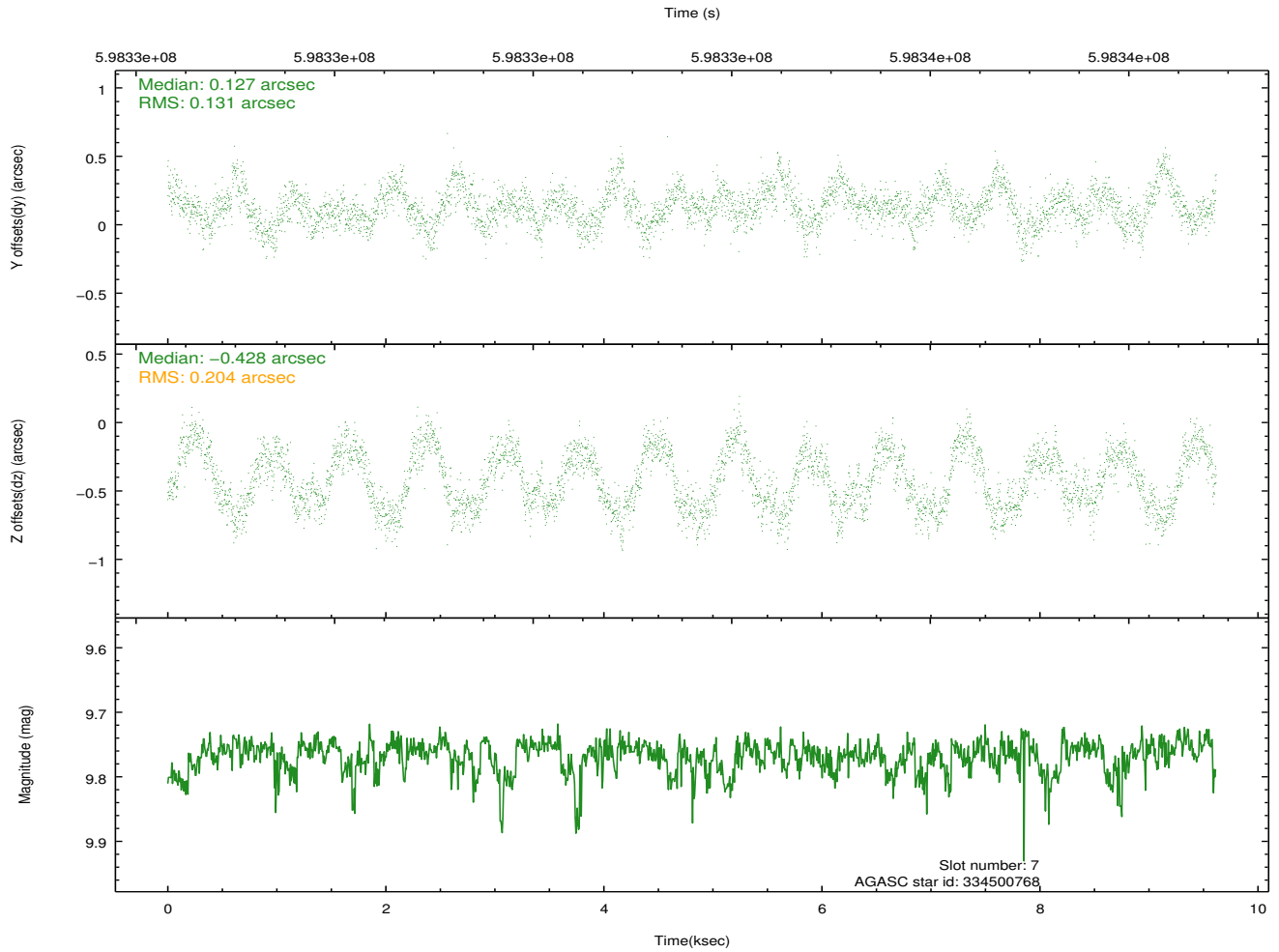
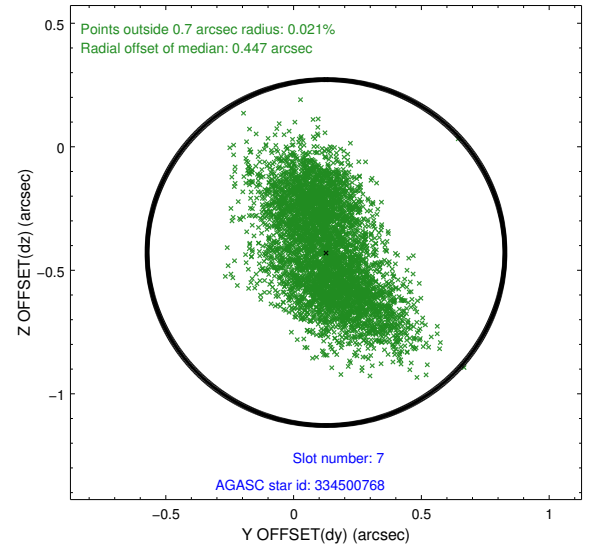
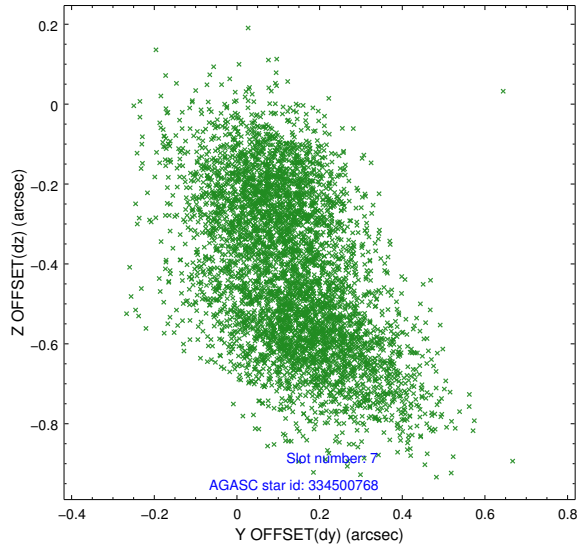
2.4.3 Slot 5



2.4.4 Slot 6

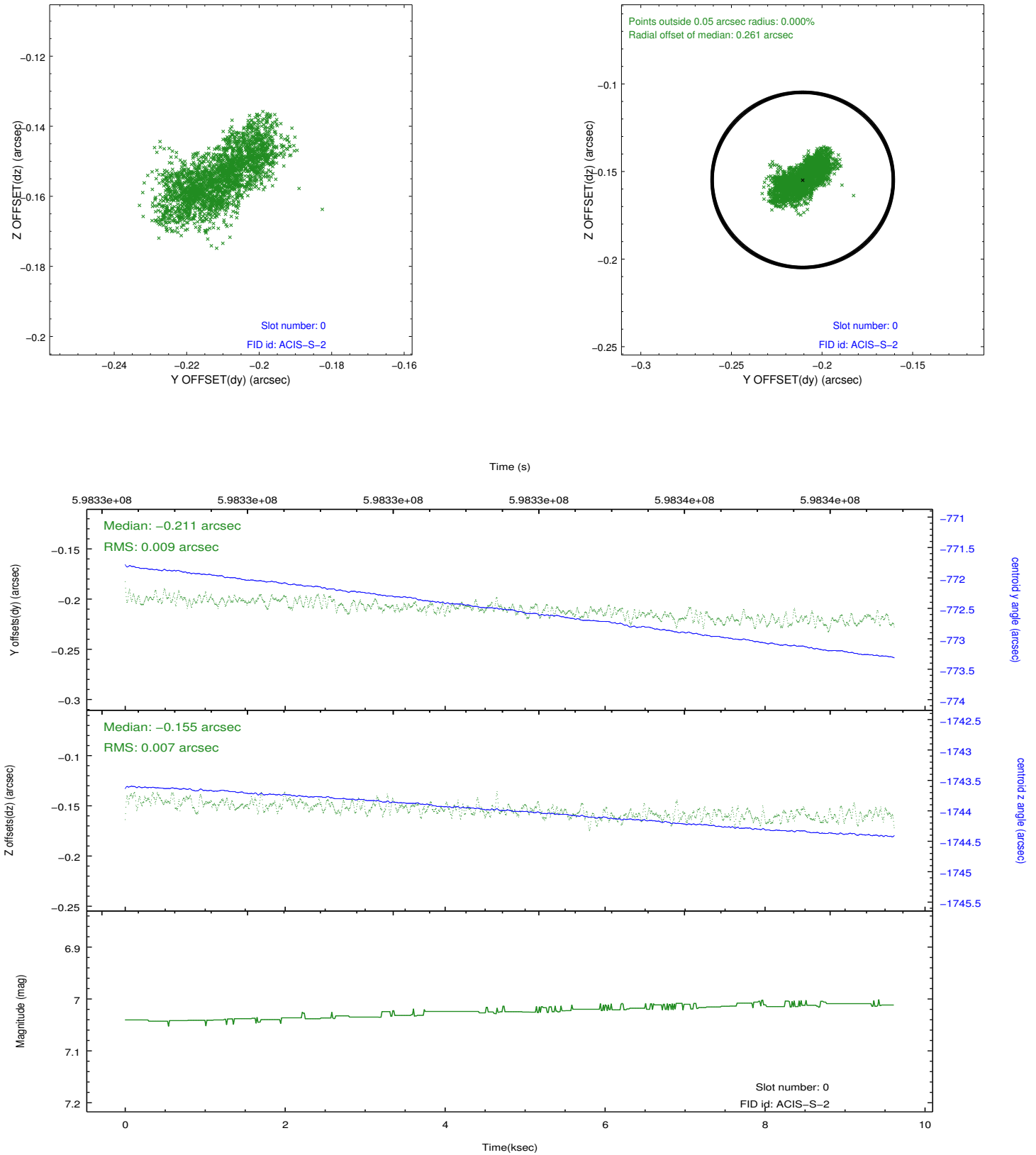


2.4.5 Slot 7

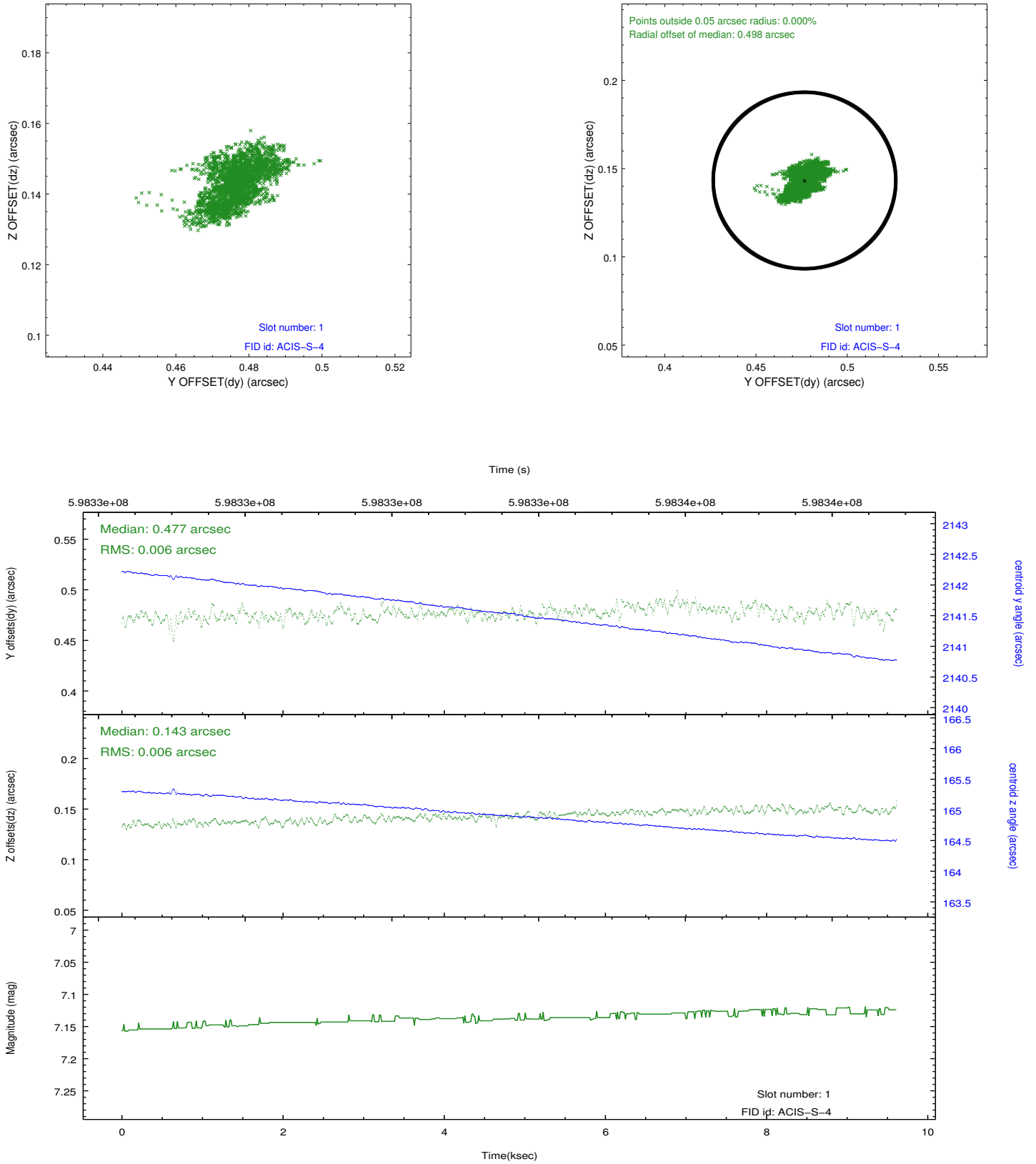


2.5 FID Slots

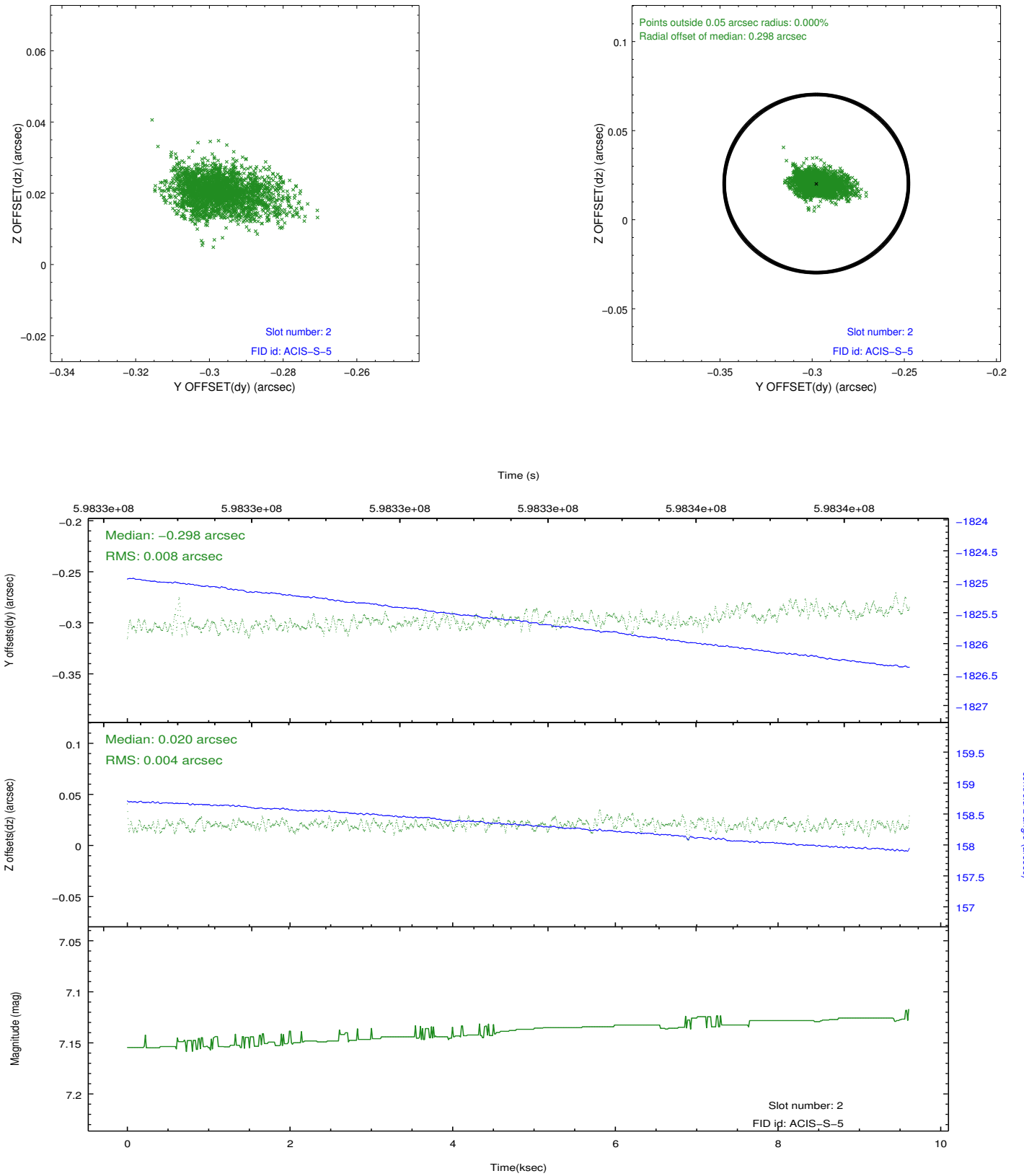
2.5.1 Slot 0



2.5.2 Slot 1



2.5.3 Slot 2



A Summary

A.1 Status

V&V Scientist	Jen Lauer
V&V Date (YYYY-MM-DD)	2016.12.19
V&V Edition	1
V&V Disposition and Status	OK
V&V Charge Time	8.9472001333237

A.2 Comments