

V&V Reference Report

L2 ASCDS Version : 10.6

Observation 19137 - L2 Version 1
Chandra X-Ray Center

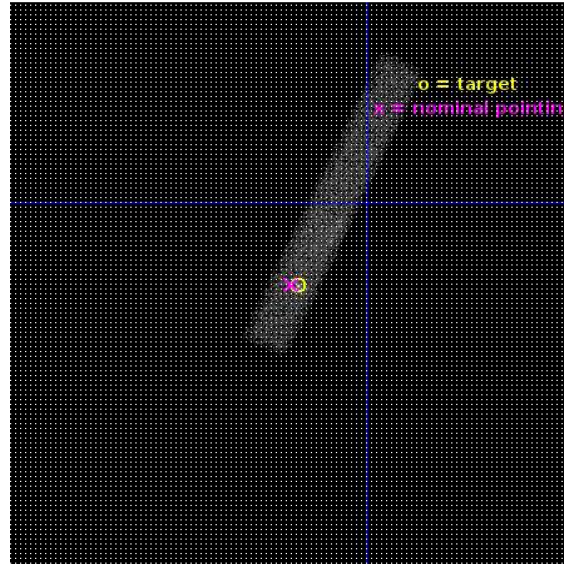
L2 Processing Date : Jul 10 2017

Contents

1	Front	2
2	OBI	3
2.1	OBI	3
2.1.1	Images	3
2.1.2	Bias	3
2.1.3	Parameters	4
2.1.4	Events	4
2.2	Compared Parameters	5
2.3	Aspect	6
2.4	Star Slots	9
2.4.1	Slot 3	9
2.4.2	Slot 4	10
2.4.3	Slot 5	11
2.4.4	Slot 6	12
2.4.5	Slot 7	13
2.5	FID Slots	14
2.5.1	Slot 0	14
2.5.2	Slot 1	15
2.5.3	Slot 2	16
A	Summary	17
A.1	Status	17
A.2	Comments	17

1 Front

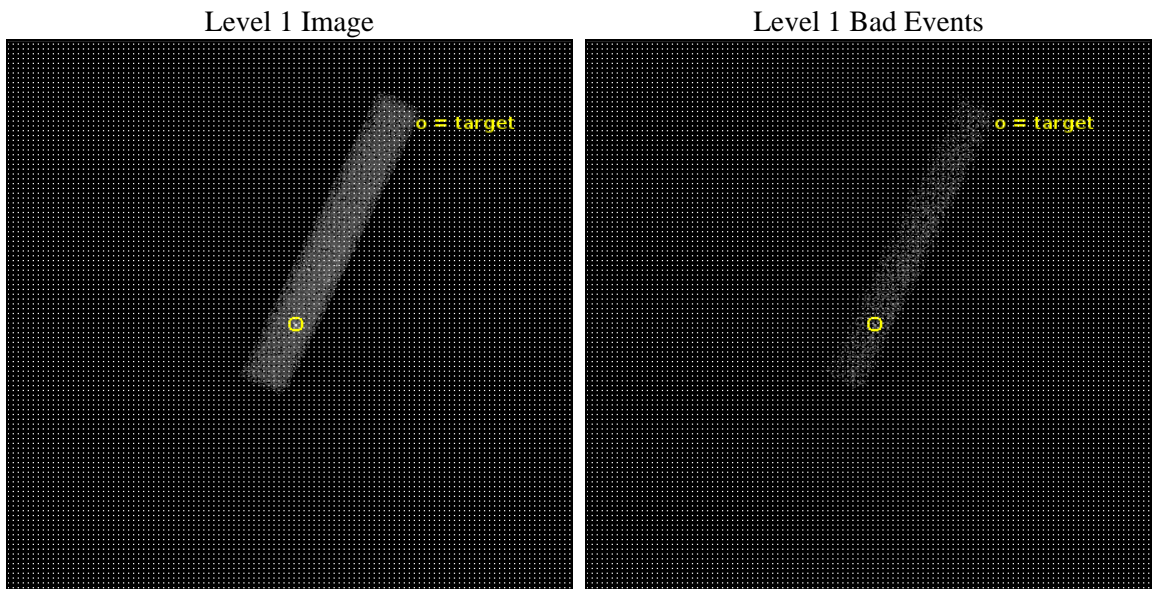
seq_num	502787	Sequence number
obs_id	19137	Observation id
title	PROMPT STUDY OF MAGNETAR OUTBURSTS WITH CHANDRA AND NUSTAR	Proposa
observer	Nanda Rea	Principal investigator
object	CXO J164710.2-455216	Source name
dtcycle	0	
cycle	P	events from which exps? Prim/Second/Both
ra_targ	251.7925	Observer's specified target RA [deg]
dec_targ	-45.871389	Observer's specified target Dec [deg]
ra_nom	251.79681693033	Nominal RA [deg]
dec_nom	-45.870977758949	Nominal Dec [deg]
roll_nom	295.05421049035	Nominal Roll [deg]
revision	1	Processing version of data
ontime	20069.198803663	Sum of GTIs [s]
livetime	18201.703975751	Livetime [s]
ontime7	20069.198803663	Sum of GTIs [s]
l2events	19975	Number of level 2 events



2 OBI

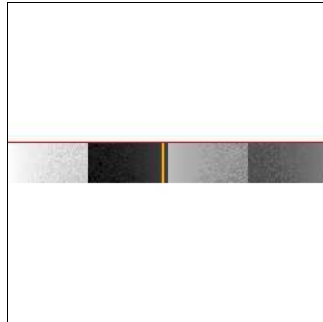
2.1 OBI

2.1.1 Images



2.1.2 Bias

Chip 7



2.1.3 Parameters

obi_num	0	Obi number	sched_exp_time	20000.000000	[s] Scheduled observation exposure time
ascdsver	10.6	Processing system revision	ontime	20069.198803663	Sum of GTIs [s]
caldsver	4.7.5	 	ontime7	20069.198803663	Sum of GTIs [s]
date	2017-07-10T22:07:31	Date and time of file creation	l1events	33813	Number of level 1 events
revision	1	Processing version of data			

2.1.4 Events

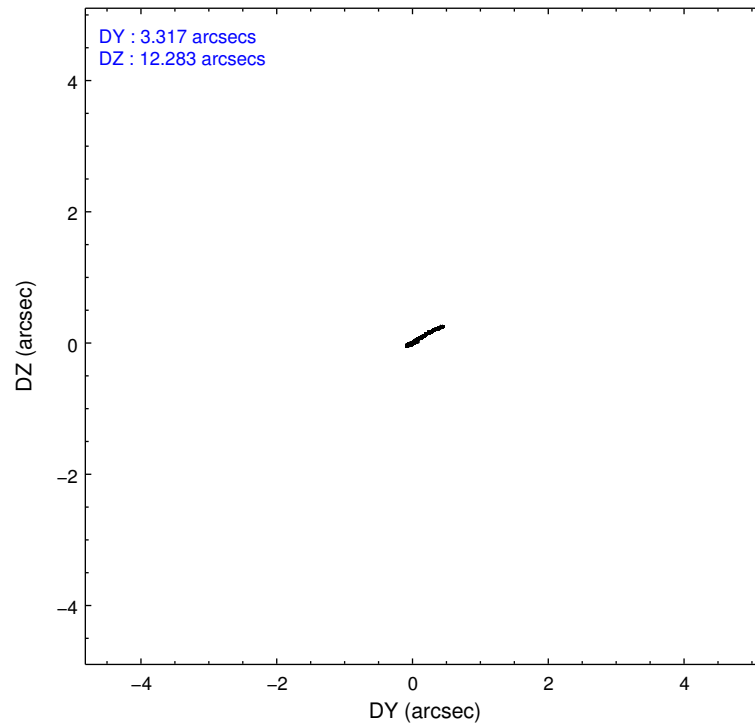
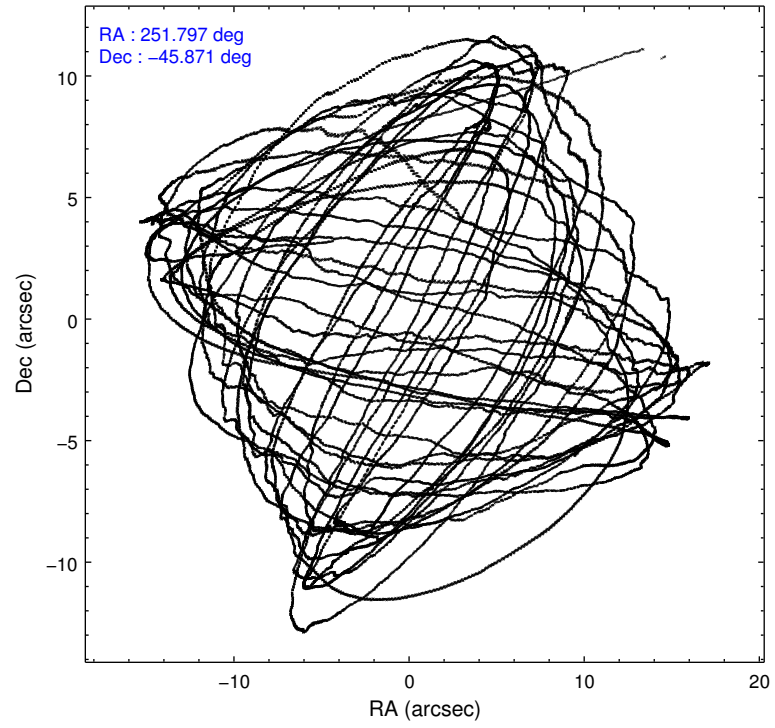
	ccd 7
level 1 events	33813
rejected events	13219
rejected %	39%

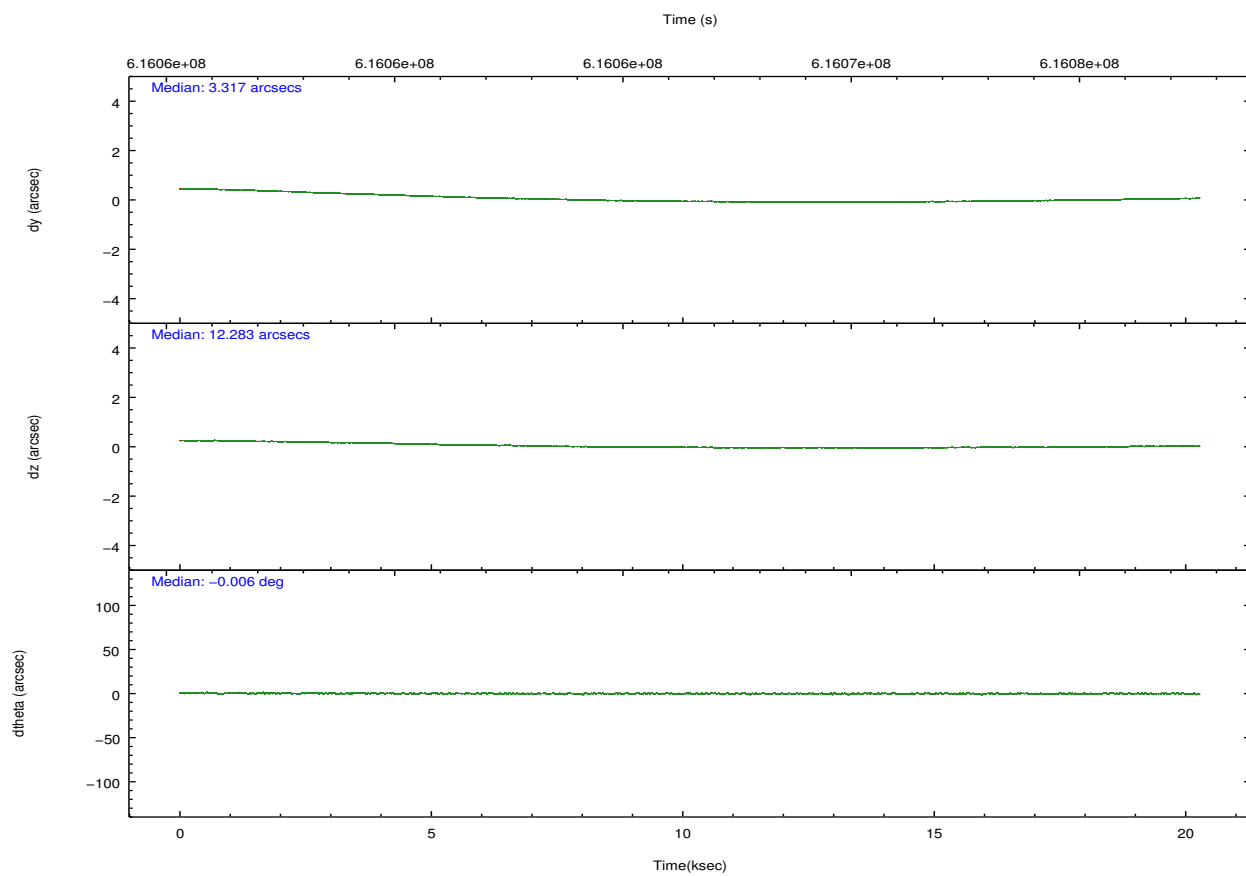
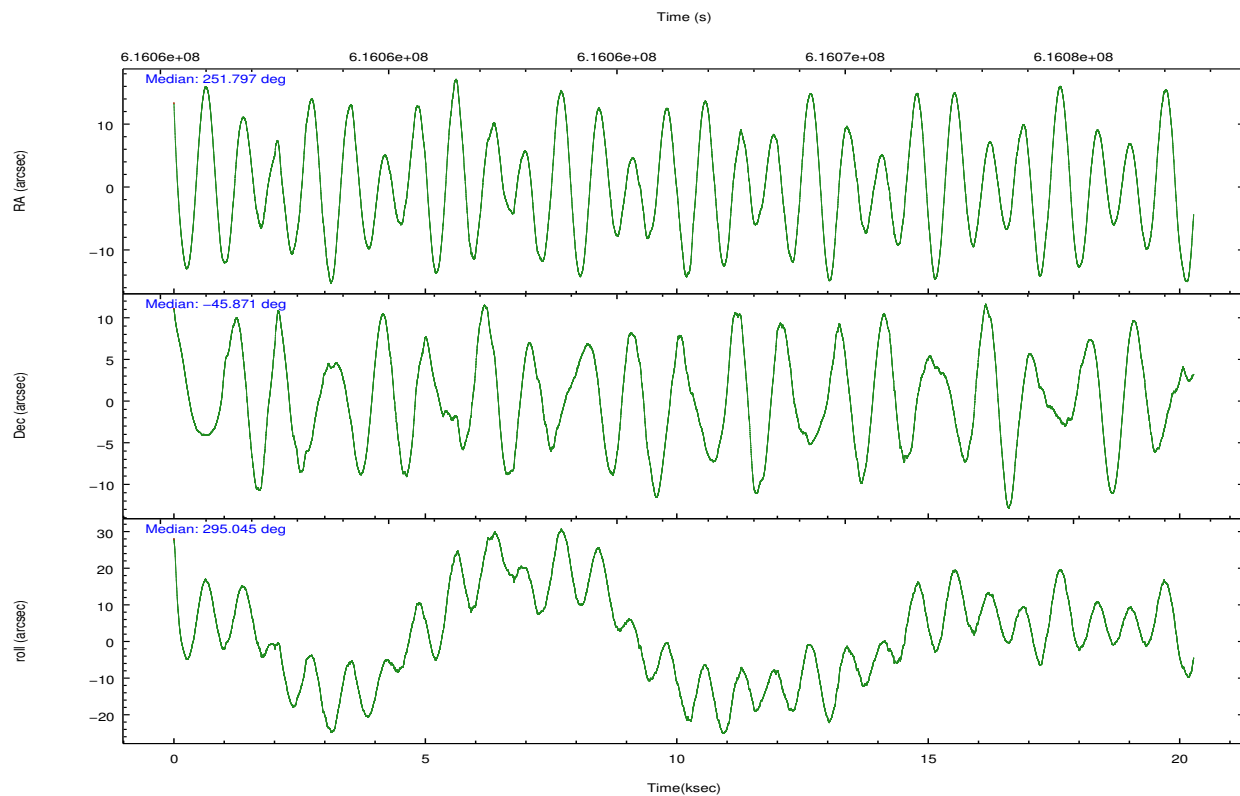
	ccd 7
grade 0 events	2943
	8%
grade 1 events	51
	0%
grade 2 events	4377
	12%
grade 3 events	2600
	7%
grade 4 events	2529
	7%
grade 5 events	2653
	7%
grade 6 events	8145
	24%
grade 7 events	10515
	31%

2.2 Compared Parameters

Parameter	Planned	Actual	Parameter	Planned	Actual
Instrument	ACIS	ACIS	Obspar format version number	7	7
Detector	ACIS-7	ACIS-7	Obspar file type	PREDICTED	ACTUAL
Grating	NONE	NONE	Obspar update status	NONE	UPDATED
Data mode	FAINT	FAINT	Number of optional ACIS chips dropped	0	0
Observation mode	POINTING	POINTING	On-chip summing requested	N	N
[deg] Pointing RA	251.764250	251.7968169303295	Subarray requested	CUSTOM	1/8
[deg] Pointing Dec	-45.855578	-45.87097775894926	Subarray start row	449	449
[deg] Pointing Roll	294.874193	295.0542104903521	Subarray row count	128	128
[mm] SIM focus pos	-0.684267	-0.6828225247311905	Alternating exposures requested	N	N
[mm] SIM defocus	0	0.001444936568705701	[s] Primary exposure time	0.000000	0.4
[mm] SIM translation stage pos	-190.132523	-190.1400660498719			
[mm] SIM translation stage offset	0	0.00754346686406393			
[s] Observation start time (MET)	616056611.184000	616055850.7055399			
Observation start date	2017-07-10T06:49:02	2017-07-10T06:37:30			
[s] Observation end time (MET)	616076611.184000	616077839.00683			
Observation end date	2017-07-10T12:22:22	2017-07-10T12:43:59			
Read mode	TIMED	TIMED			

2.3 Aspect



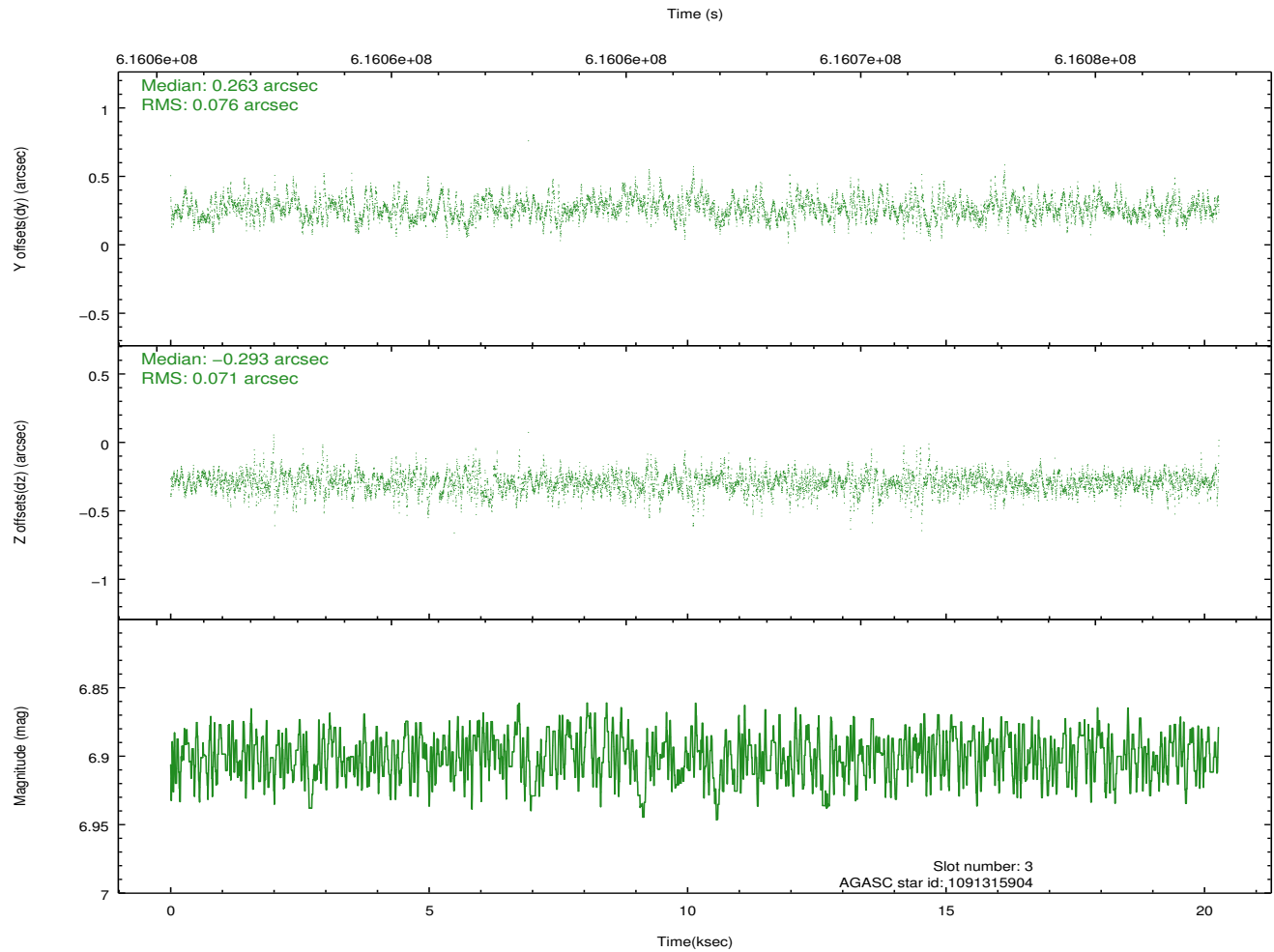
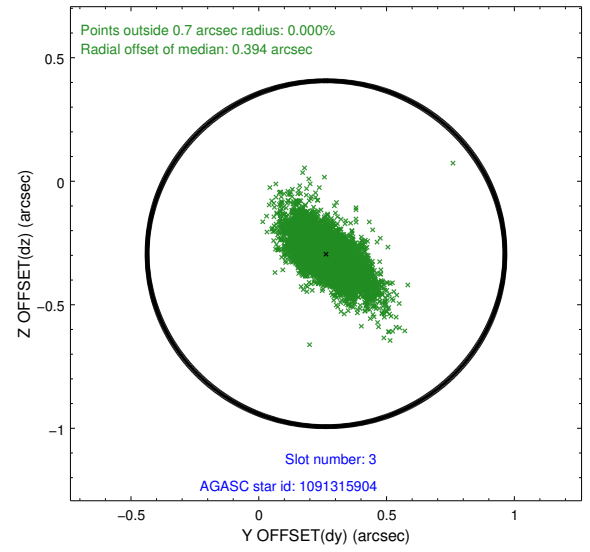
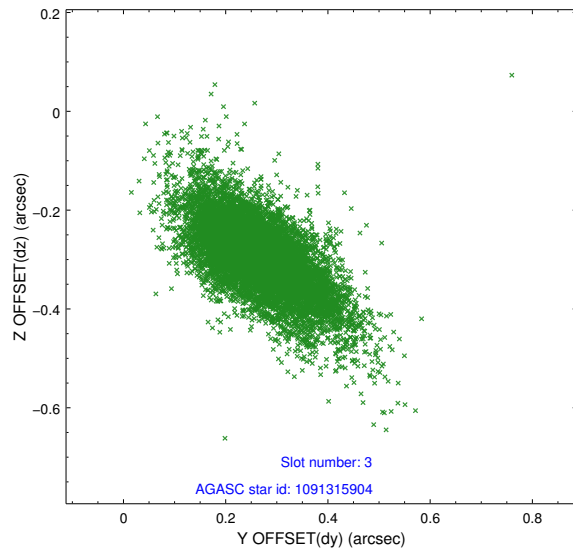


Slot Statistics

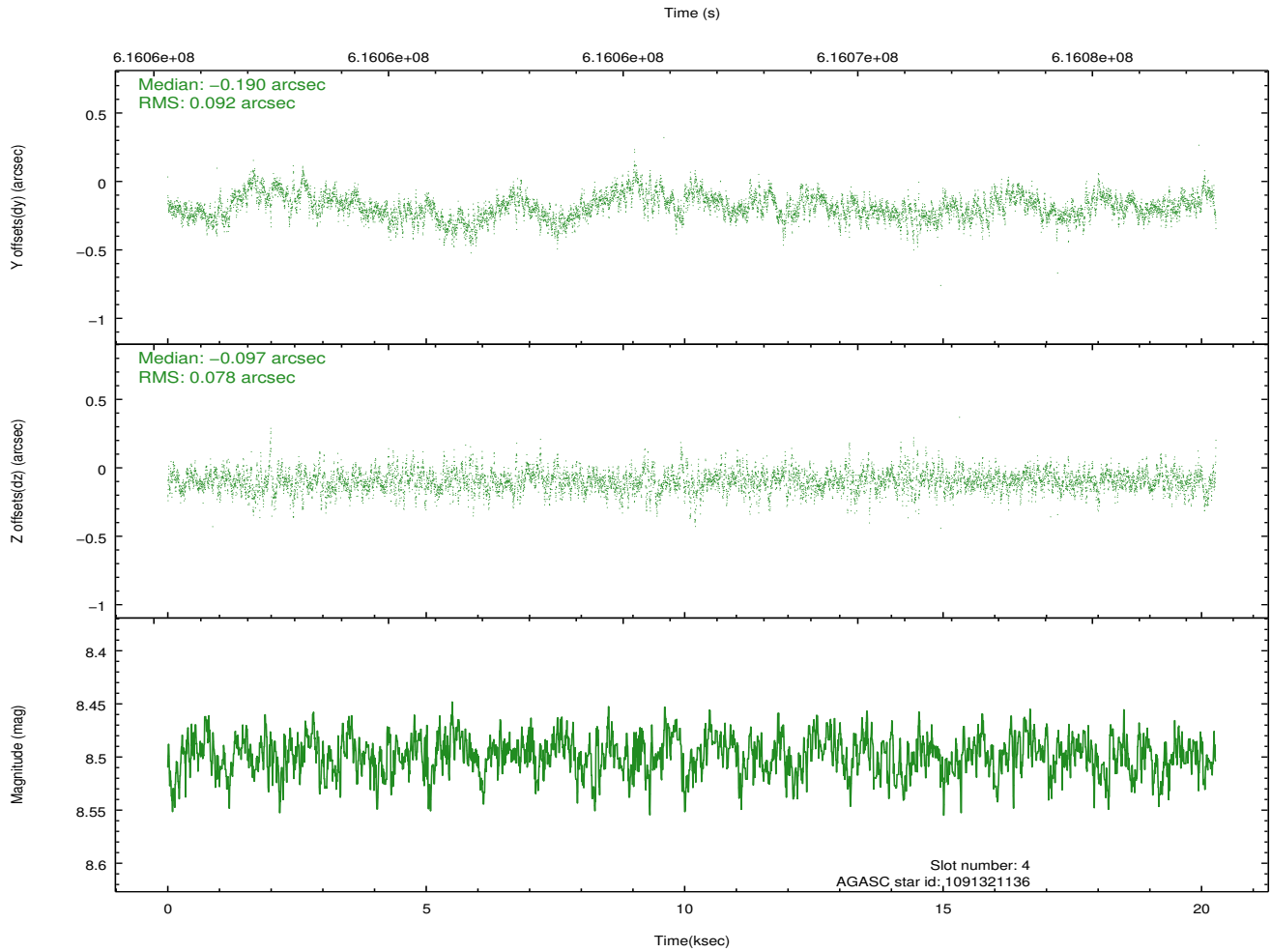
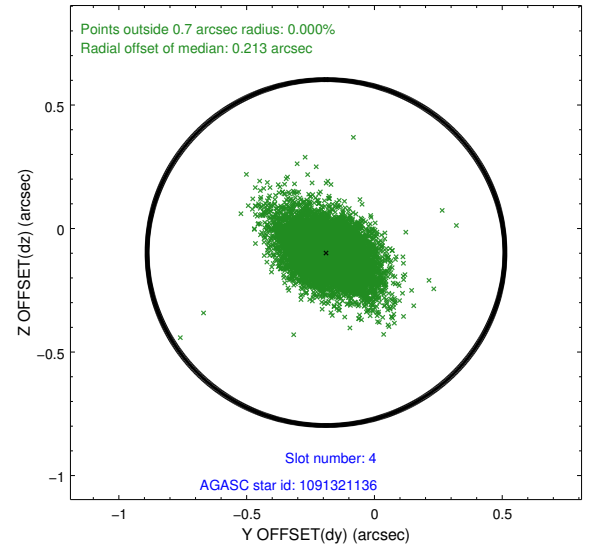
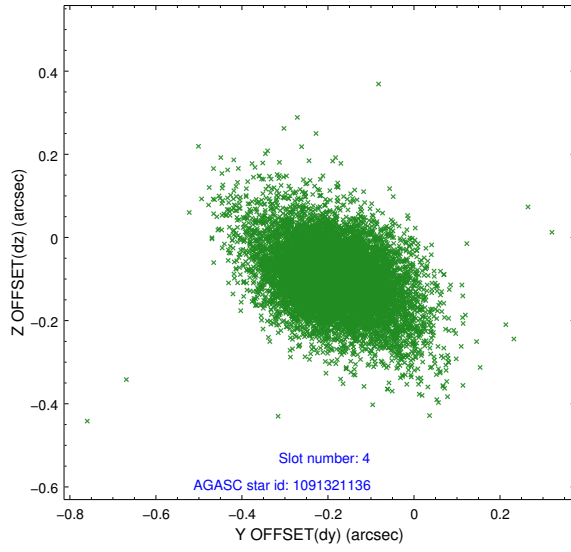
slot	status	used	id	mag	n_pts	med_dy	med_dz	dr1	dr2	ra	dec	mean_y	mean_z
0	FID		ACIS-S-1	7.12	4947	0.120	-0.086	0.010	0.018	0.000000	0.000000	940.13	-1729.34
1	FID		ACIS-S-5	7.16	4947	-0.200	0.071	0.008	0.016	0.000000	0.000000	-1809.09	168.17
2	FID		ACIS-S-6	7.29	4946	0.060	0.028	0.011	0.021	0.000000	0.000000	405.42	812.30
3	GUIDE	used	1091315904	6.90	9891	0.263	-0.293	0.103	0.194	252.023077	-45.944918	565.99	451.93
4	GUIDE	used	1091321136	8.50	9888	-0.190	-0.097	0.121	0.220	252.629031	-45.865288	954.12	1947.15
5	GUIDE	used	1091321752	6.95	9890	-0.028	0.185	0.124	0.213	251.516776	-46.486101	1803.03	-1511.01
6	GUIDE	used	1091343368	6.90	9891	-0.026	0.005	0.128	0.220	251.526552	-46.531998	1963.86	-1558.86
7	GUIDE	used	1091318704	7.58	9892	-0.031	0.205	0.134	0.233	251.955714	-45.390313	-1314.94	1143.35

2.4 Star Slots

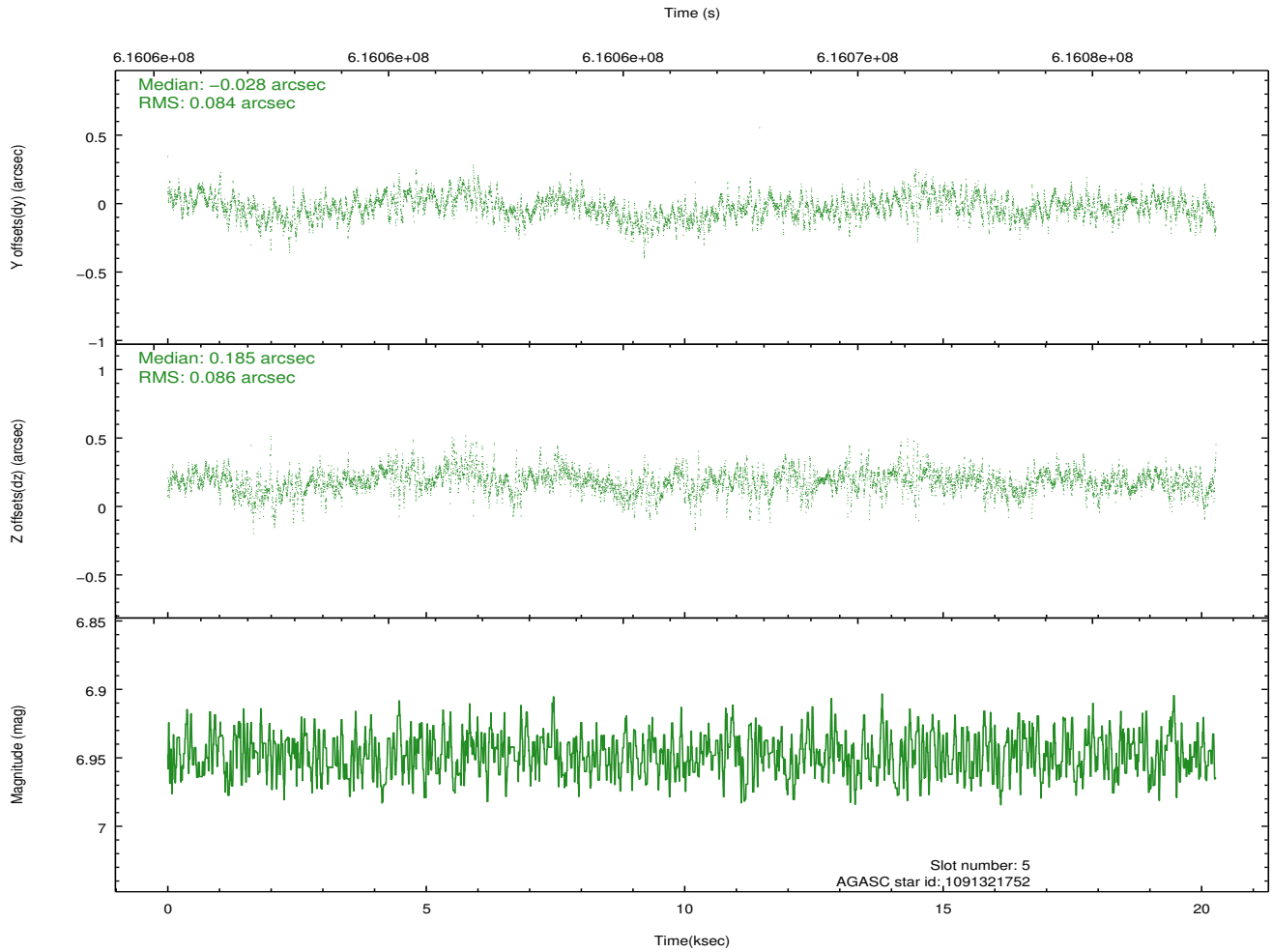
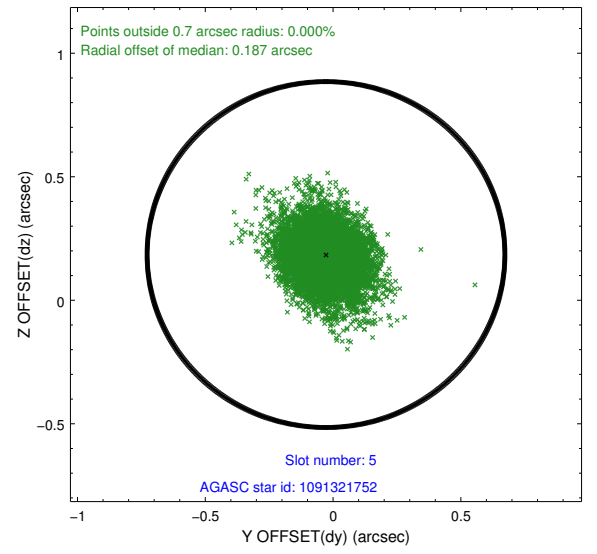
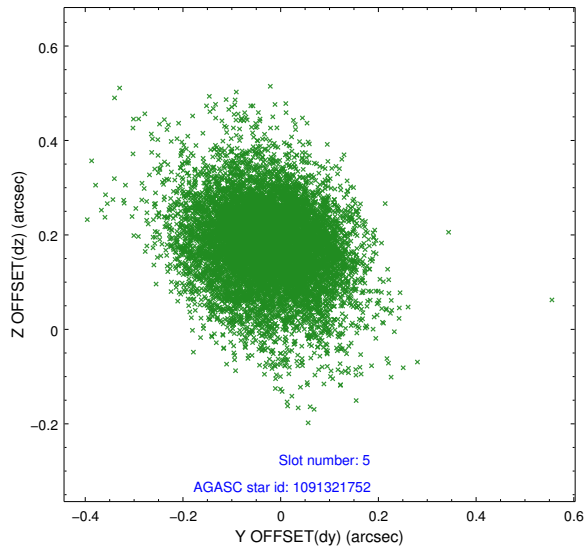
2.4.1 Slot 3



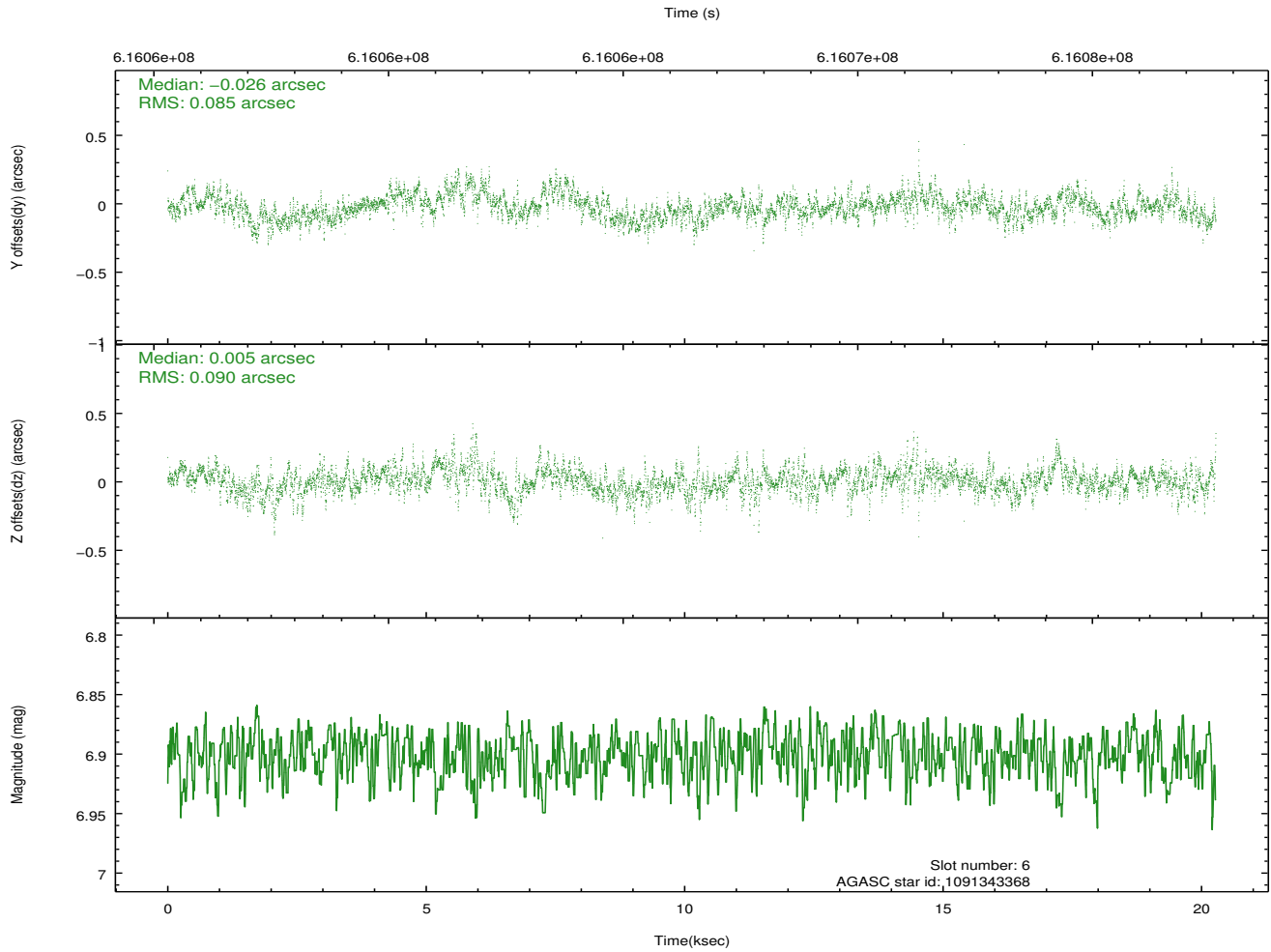
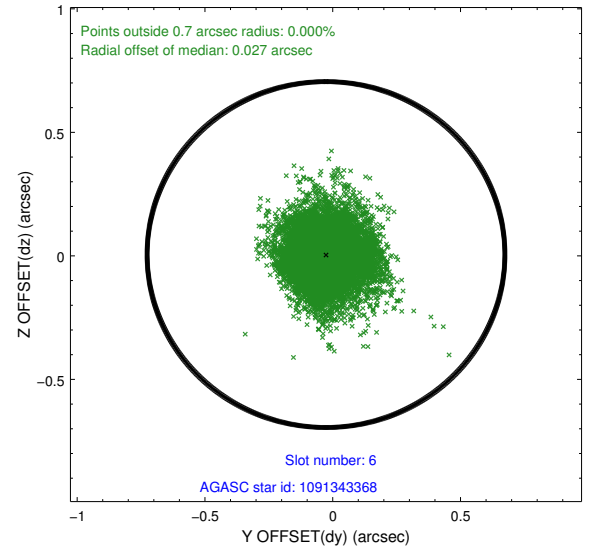
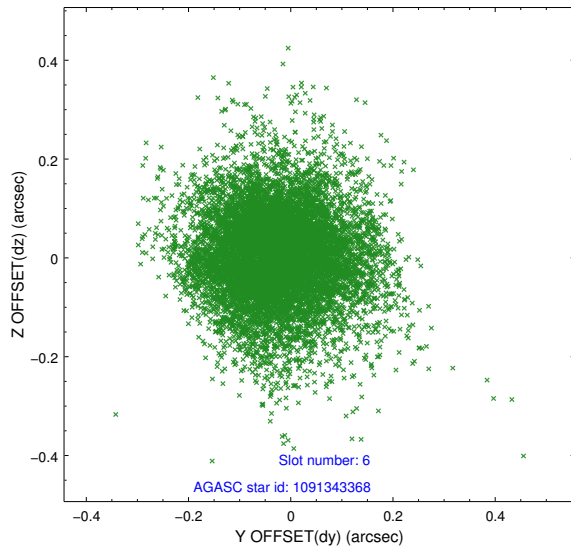
2.4.2 Slot 4



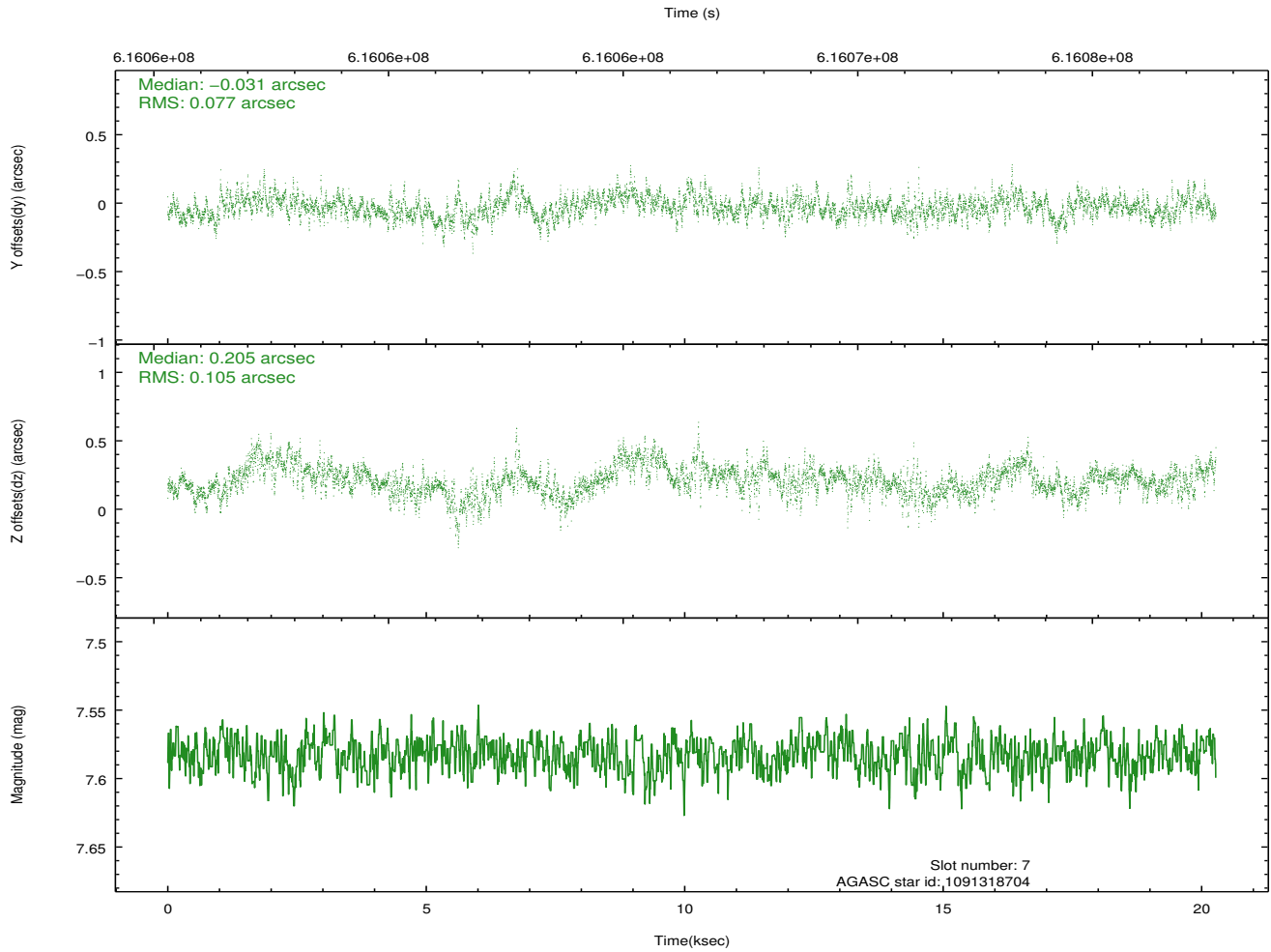
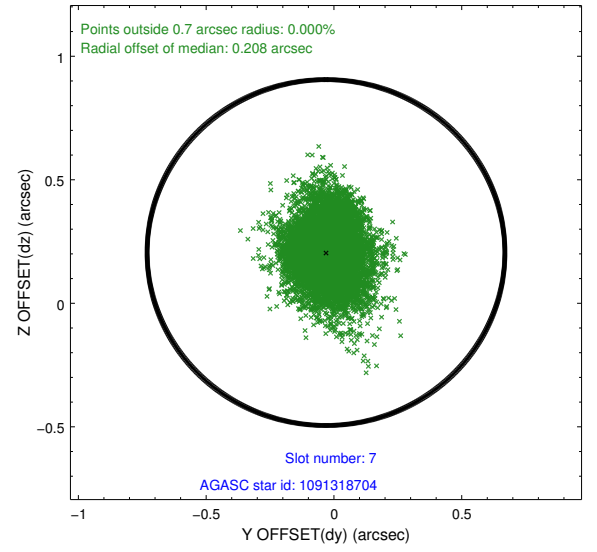
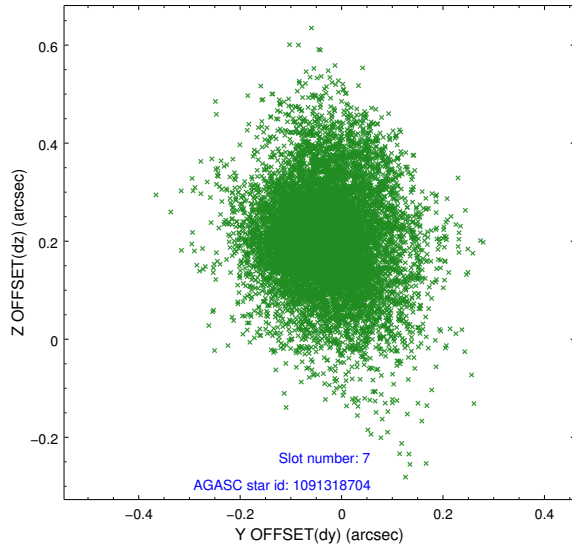
2.4.3 Slot 5



2.4.4 Slot 6

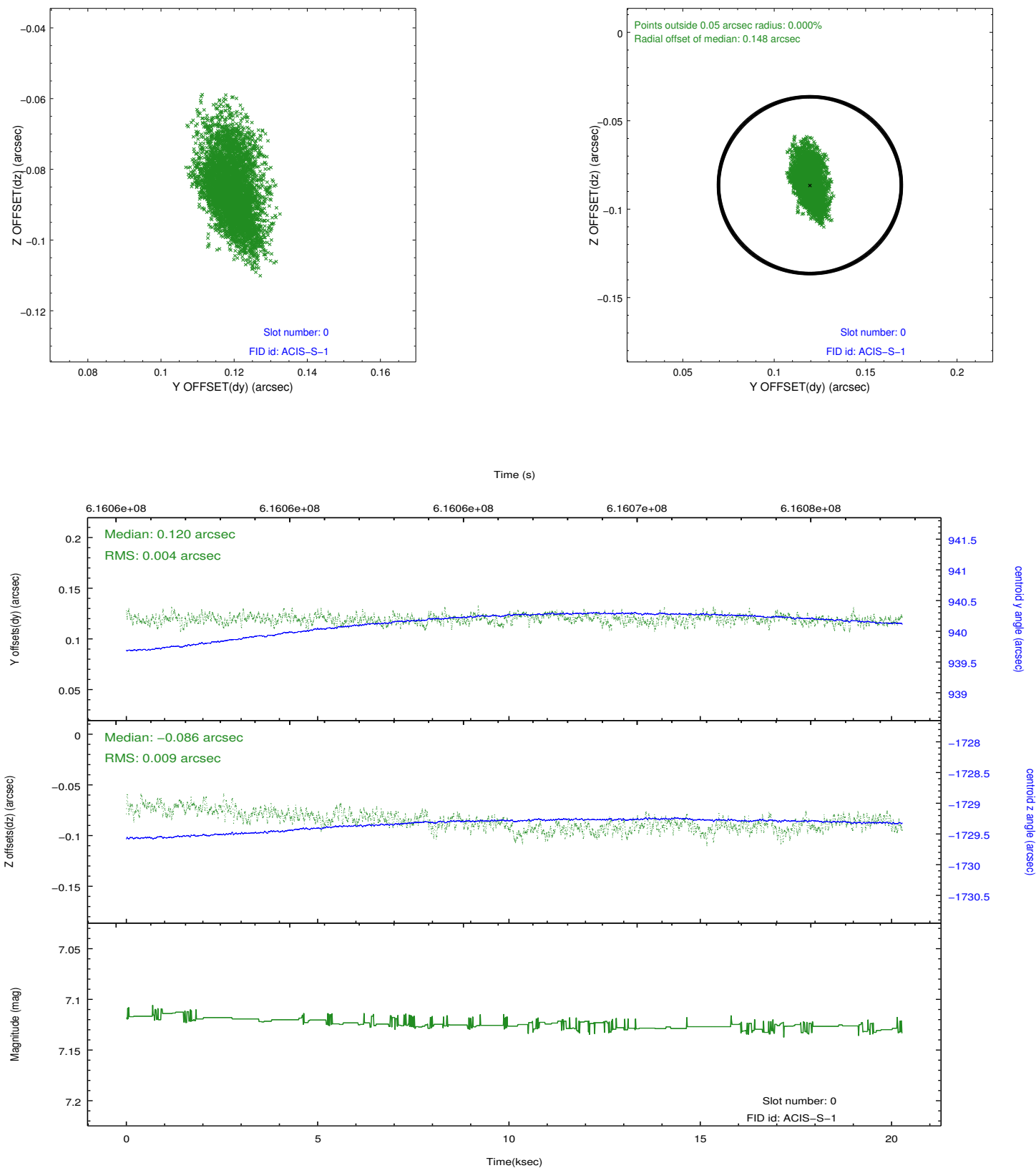


2.4.5 Slot 7

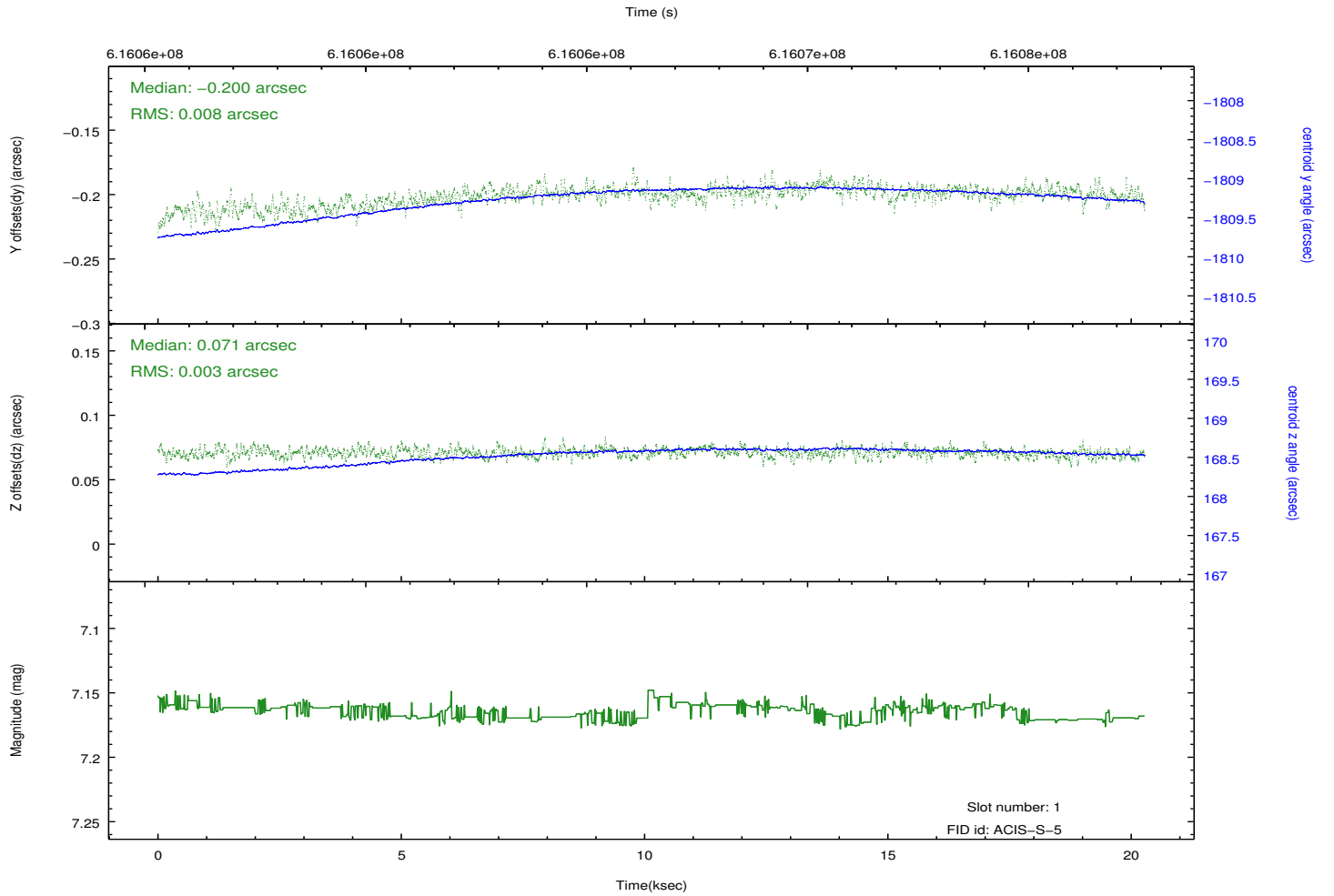
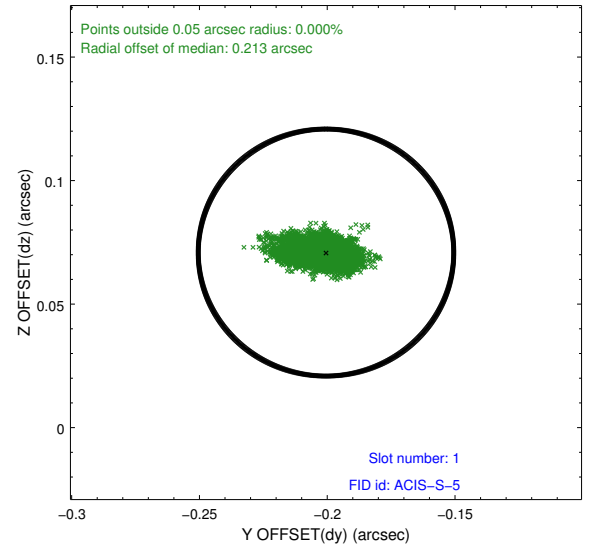
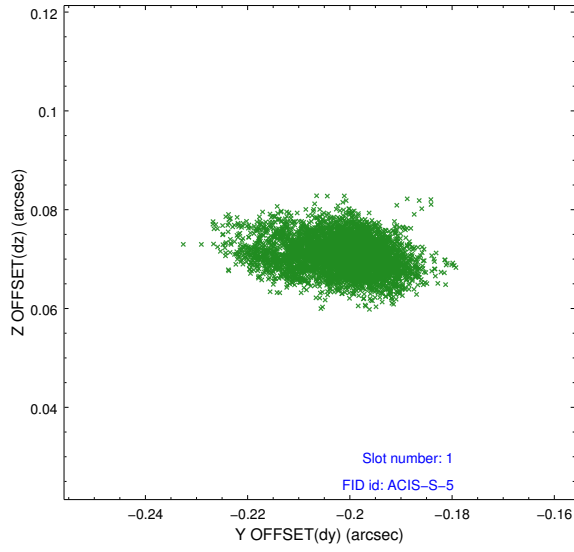


2.5 FID Slots

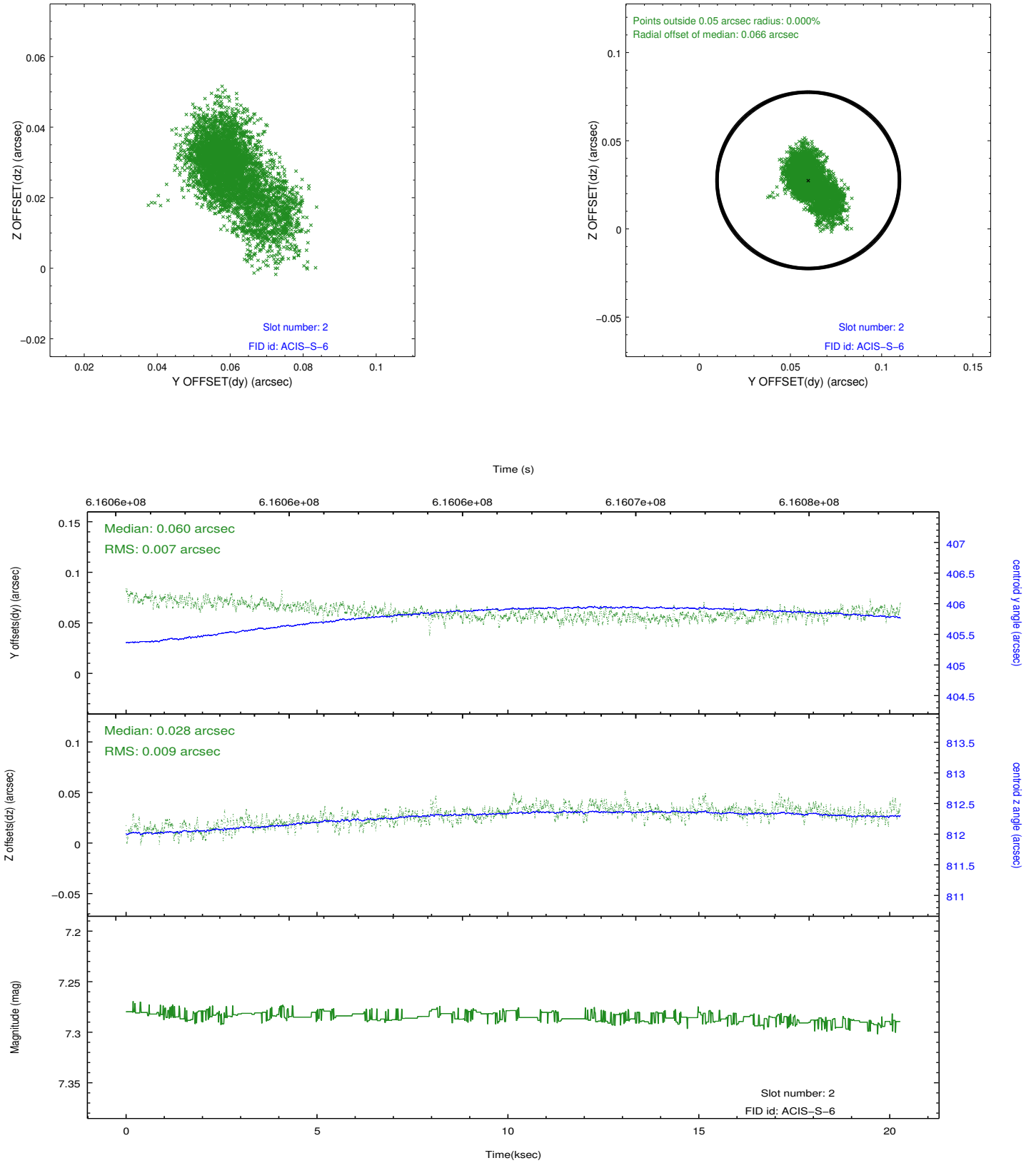
2.5.1 Slot 0



2.5.2 Slot 1



2.5.3 Slot 2



A Summary

A.1 Status

V&V Scientist	Beth Sundheim
V&V Date (YYYY-MM-DD)	2017.07.10
V&V Edition	1
V&V Disposition and Status	OK
V&V Charge Time	20.069198803663

A.2 Comments

Joint proposal with NuSTAR.