

# V&V Reference Report

## L2 ASCDS Version : 10.5.2

Observation 18936 - L2 Version 1  
Chandra X-Ray Center

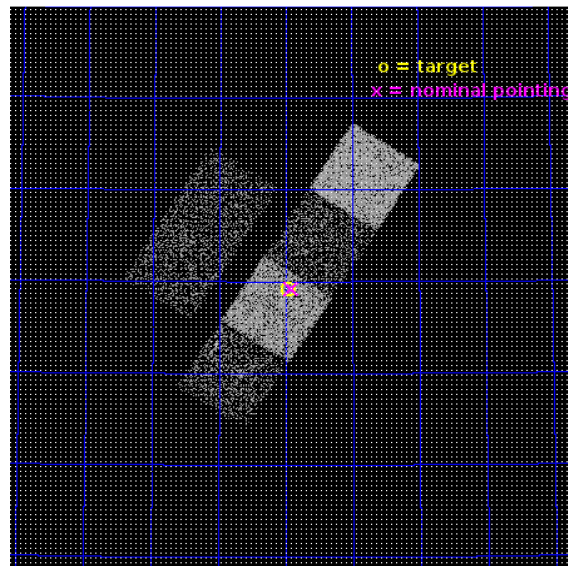
L2 Processing Date : Nov 23 2016

## Contents

<b>1</b>	<b>Front</b>	<b>2</b>
<b>2</b>	<b>OBI</b>	<b>3</b>
2.1	OBI . . . . .	3
2.1.1	Images . . . . .	3
2.1.2	Bias . . . . .	3
2.1.3	Parameters . . . . .	4
2.1.4	Events . . . . .	4
2.2	Compared Parameters . . . . .	5
2.3	Aspect . . . . .	6
2.4	Star Slots . . . . .	9
2.4.1	Slot 3 . . . . .	9
2.4.2	Slot 4 . . . . .	10
2.4.3	Slot 5 . . . . .	11
2.4.4	Slot 6 . . . . .	12
2.4.5	Slot 7 . . . . .	13
2.5	FID Slots . . . . .	14
2.5.1	Slot 0 . . . . .	14
2.5.2	Slot 1 . . . . .	15
2.5.3	Slot 2 . . . . .	16
<b>A</b>	<b>Summary</b>	<b>17</b>
A.1	Status . . . . .	17
A.2	Comments . . . . .	17

# 1 Front

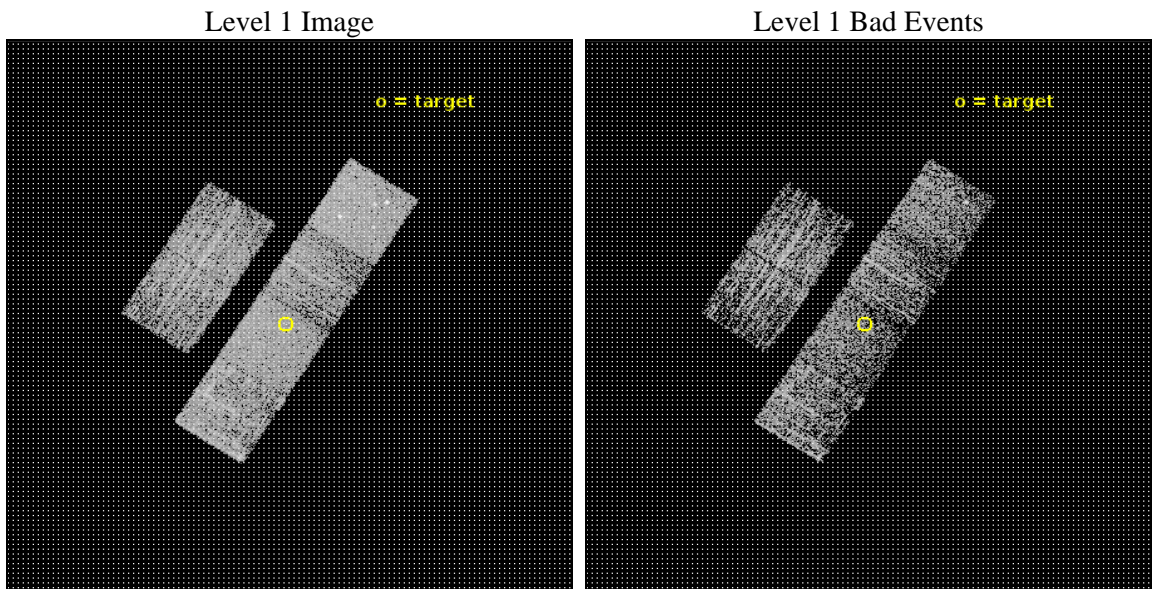
seq_num	201129	Sequence number
obs_id	18936	Observation id
title	Probing the Dynamo Mechanism in Fully Convective Stars	Proposal ti
observer	Nicholas Wright	Principal investigator
object	2MASS J06575703+6219197	Source name
dtcycle	0	&#160
cycle	P	events from which exps? Prim/Second/Both
ra_targ	104.49125	Observer's specified target RA [deg]
dec_targ	62.319611	Observer's specified target Dec [deg]
ra_nom	104.47939804658	Nominal RA [deg]
dec_nom	62.320408222807	Nominal Dec [deg]
roll_nom	122.56895719845	Nominal Roll [deg]
revision	1	Processing version of data
ontime	1936.0000288486	Sum of GTIs [s]
liveltime	1911.4852307641	Livetime [s]
ontime2	1936.0000288486	Sum of GTIs [s]
ontime3	1936.0000288486	Sum of GTIs [s]
ontime5	1936.0000288486	Sum of GTIs [s]
ontime6	1936.0000288486	Sum of GTIs [s]
ontime7	1936.0000288486	Sum of GTIs [s]
ontime8	1936.0000288486	Sum of GTIs [s]
l2events	21127	Number of level 2 events



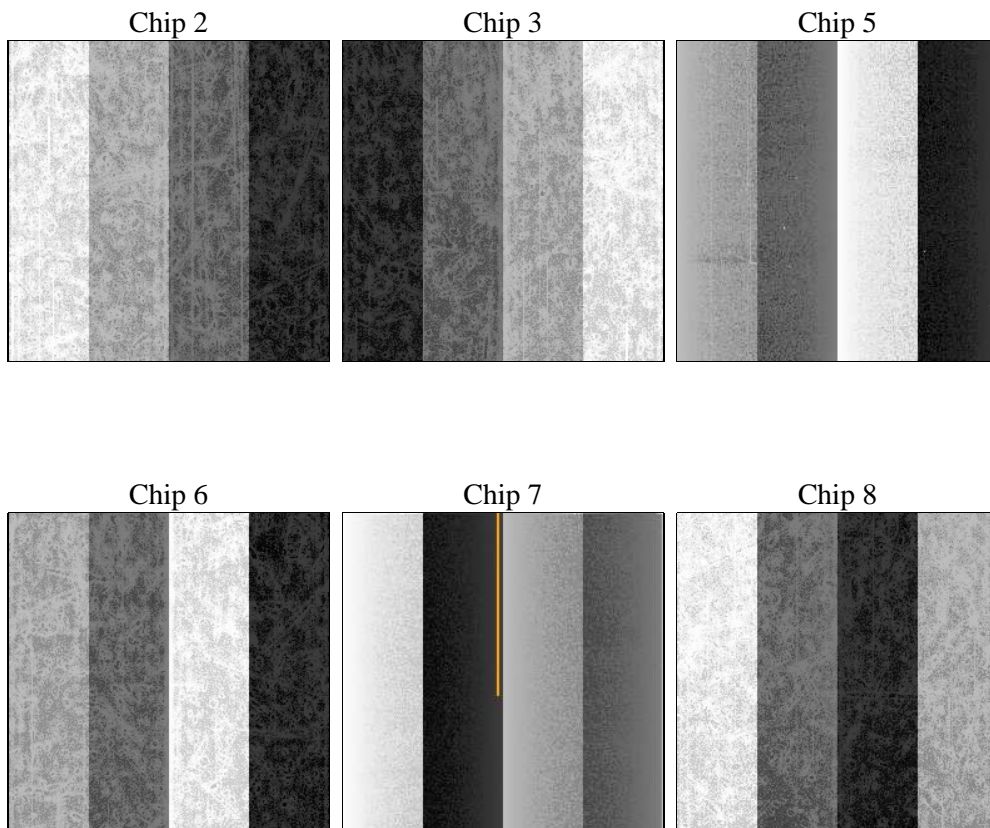
## 2 OBI

### 2.1 OBI

#### 2.1.1 Images



#### 2.1.2 Bias



### 2.1.3 Parameters

obi_num	1	Obi number	sched_exp_time	2000.000000	[s] Scheduled observation exposure time
ascdsver	10.5.2	Processing system revision	ontime	1936.0000288486	Sum of GTIs [s]
caldsver	4.7.2	&#160	ontime2	1936.0000288486	Sum of GTIs [s]
date	2016-11-23T22:34:55	Date and time of file creation	ontime3	1936.0000288486	Sum of GTIs [s]
revision	1	Processing version of data	ontime5	1936.0000288486	Sum of GTIs [s]
			ontime6	1936.0000288486	Sum of GTIs [s]
			ontime7	1936.0000288486	Sum of GTIs [s]
			ontime8	1936.0000288486	Sum of GTIs [s]
			l1events	96350	Number of level 1 events

### 2.1.4 Events

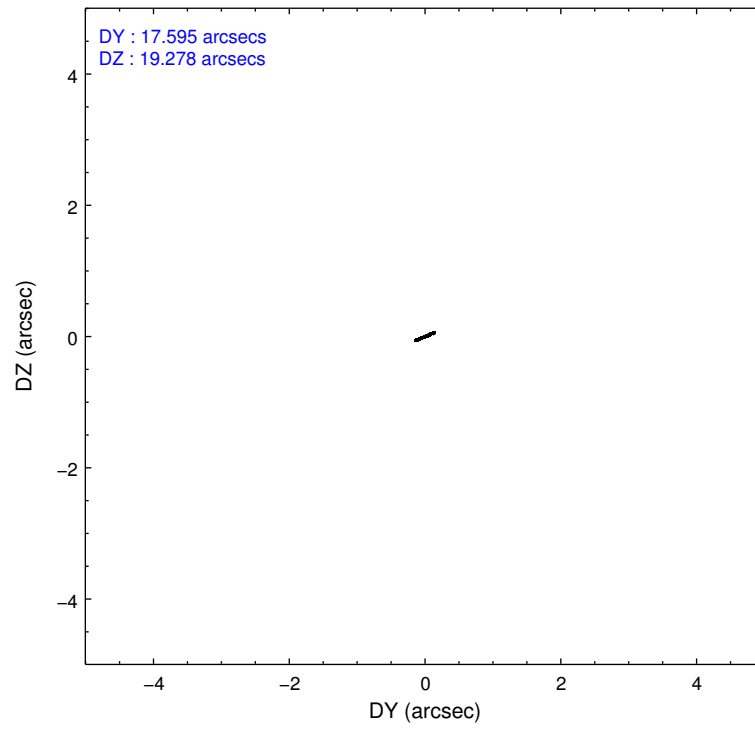
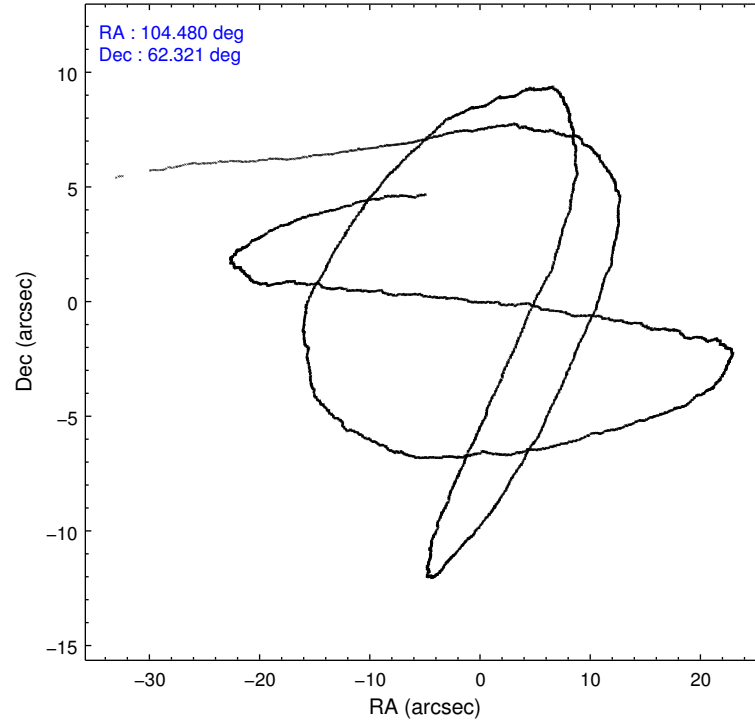
	ccd 2	ccd 3	ccd 5	ccd 6	ccd 7	ccd 8
level 1 events	14225	12777	21633	12973	16933	17809
rejected events	12851	11514	11172	11512	9761	13532
rejected %	90%	90%	51%	88%	57%	75%

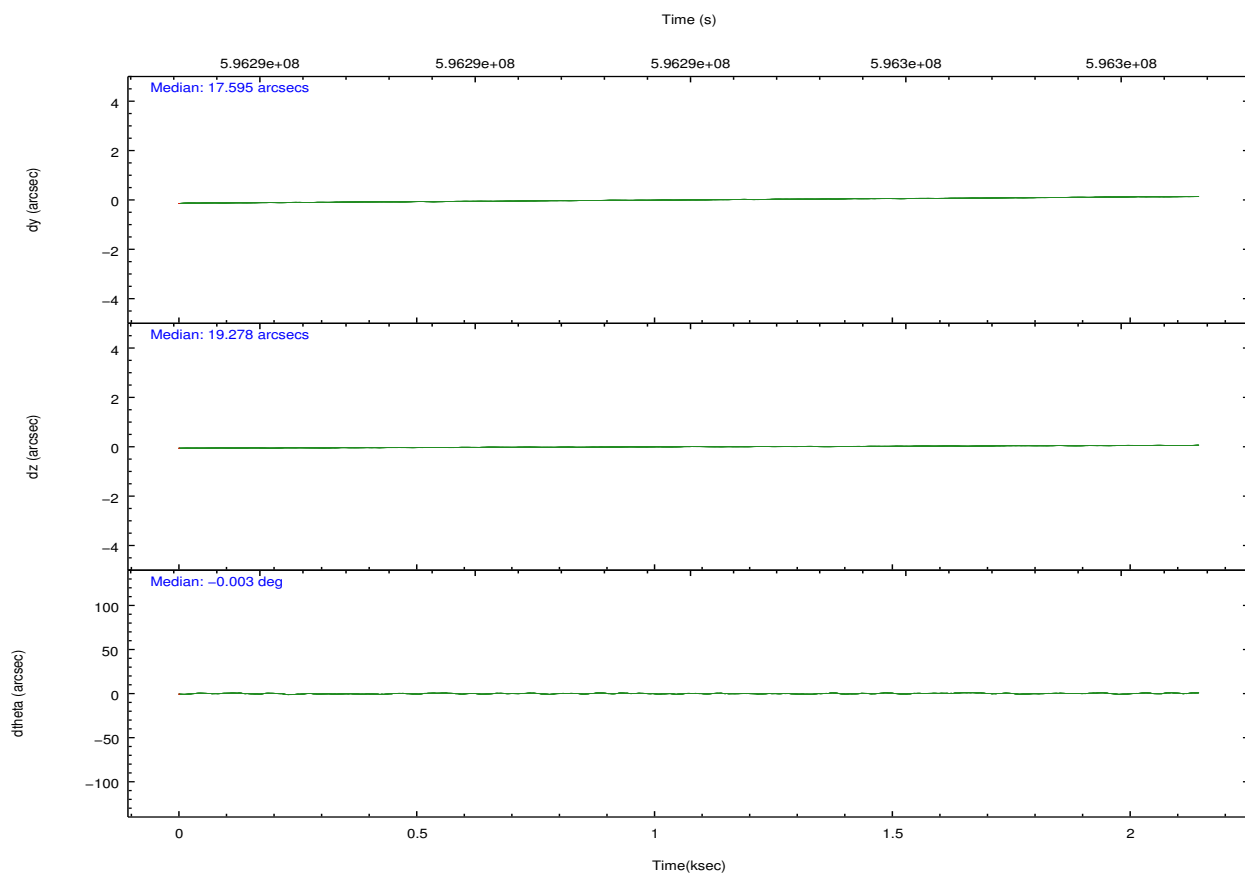
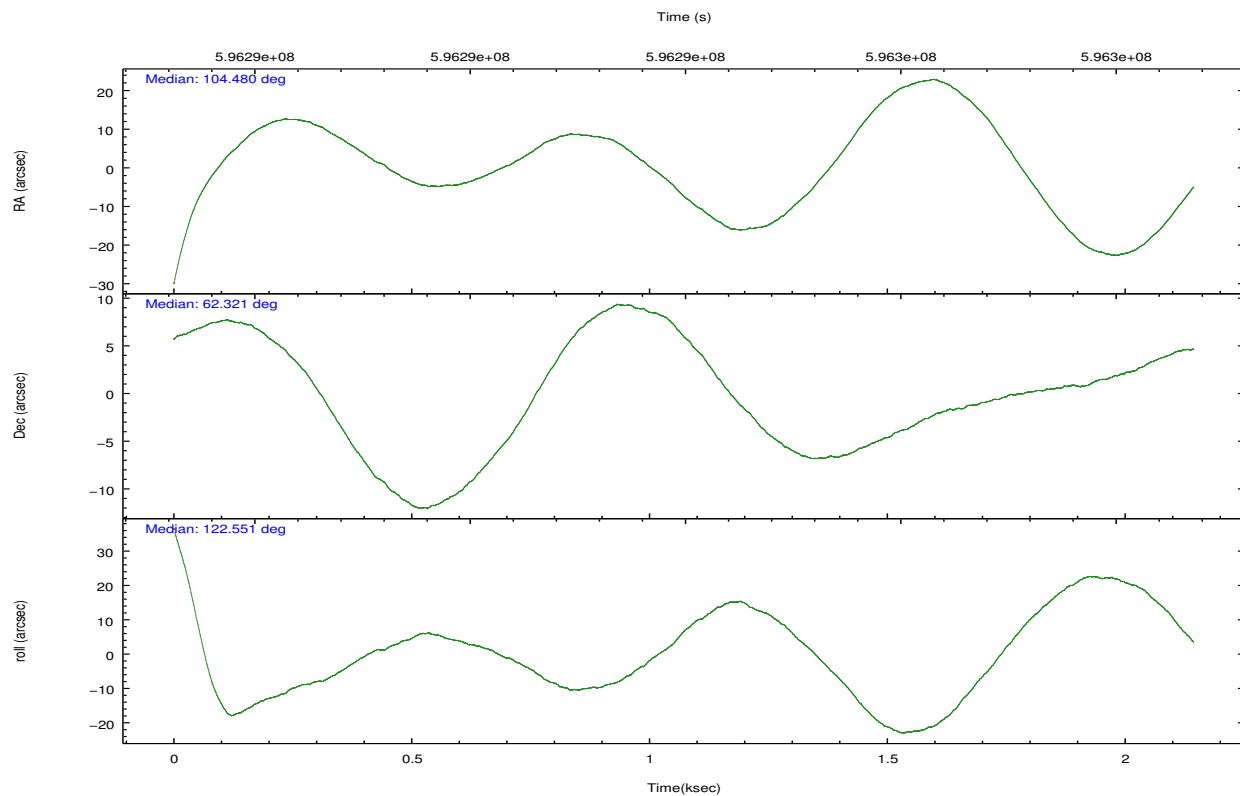
	ccd 2	ccd 3	ccd 5	ccd 6	ccd 7	ccd 8
grade 0 events	516	408	1305	467	602	1151
	3%	3%	6%	3%	3%	6%
grade 1 events	5	9	44	3	25	9
	0%	0%	0%	0%	0%	0%
grade 2 events	275	320	3186	350	1544	1130
	1%	2%	14%	2%	9%	6%
grade 3 events	160	150	299	167	512	420
	1%	1%	1%	1%	3%	2%
grade 4 events	140	123	253	124	525	384
	0%	0%	1%	0%	3%	2%
grade 5 events	535	618	1474	594	1662	894
	3%	4%	6%	4%	9%	5%
grade 6 events	286	266	5466	358	4010	1201
	2%	2%	25%	2%	23%	6%
grade 7 events	12308	10883	9606	10910	8053	12620
	86%	85%	44%	84%	47%	70%

## 2.2 Compared Parameters

Parameter	Planned	Actual	Parameter	Planned	Actual
Instrument	ACIS	ACIS	Obspar format version number	7	7
Detector	ACIS-235678	ACIS-235678	Obspar file type	PREDICTED	ACTUAL
Grating	NONE	NONE	Obspar update status	NONE	UPDATED
Data mode	VFAINT	VFAINT	CCD I0 on	N	N
Observation mode	POINTING	POINTING	CCD I1 on	N	N
[deg] Pointing RA	104.532529	104.4793980465792	CCD I2 on	O1	Y
[deg] Pointing Dec	62.308009	62.32040822280672	CCD I3 on	O2	Y
[deg] Pointing Roll	122.365050	122.5689571984502	CCD S0 on	N	N
[mm] SIM focus pos	-0.684267	-0.6828225247311905	CCD S1 on	Y	Y
[mm] SIM defocus	0	0.001444936568705701	CCD S2 on	Y	Y
[mm] SIM translation stage pos	-190.132523	-190.1400660498719	CCD S3 on	Y	Y
[mm] SIM translation stage offset	0	0.00754346686406393	CCD S4 on	Y	Y
[s] Observation start time (MET)	596293581.184000	596292062.98376	CCD S5 on	N	N
Observation start date	2016-11-23T13:05:13	2016-11-23T12:41:02	Number of optional ACIS chips dropped	0	0
[s] Observation end time (MET)	596295581.184000	596296406.93401	On-chip summing requested	N	N
Observation end date	2016-11-23T13:38:33	2016-11-23T13:53:26	Subarray requested	NONE	NONE
Read mode	TIMED	TIMED	Alternating exposures requested	N	N
			[s] Primary exposure time	0.000000	3.2

## 2.3 Aspect





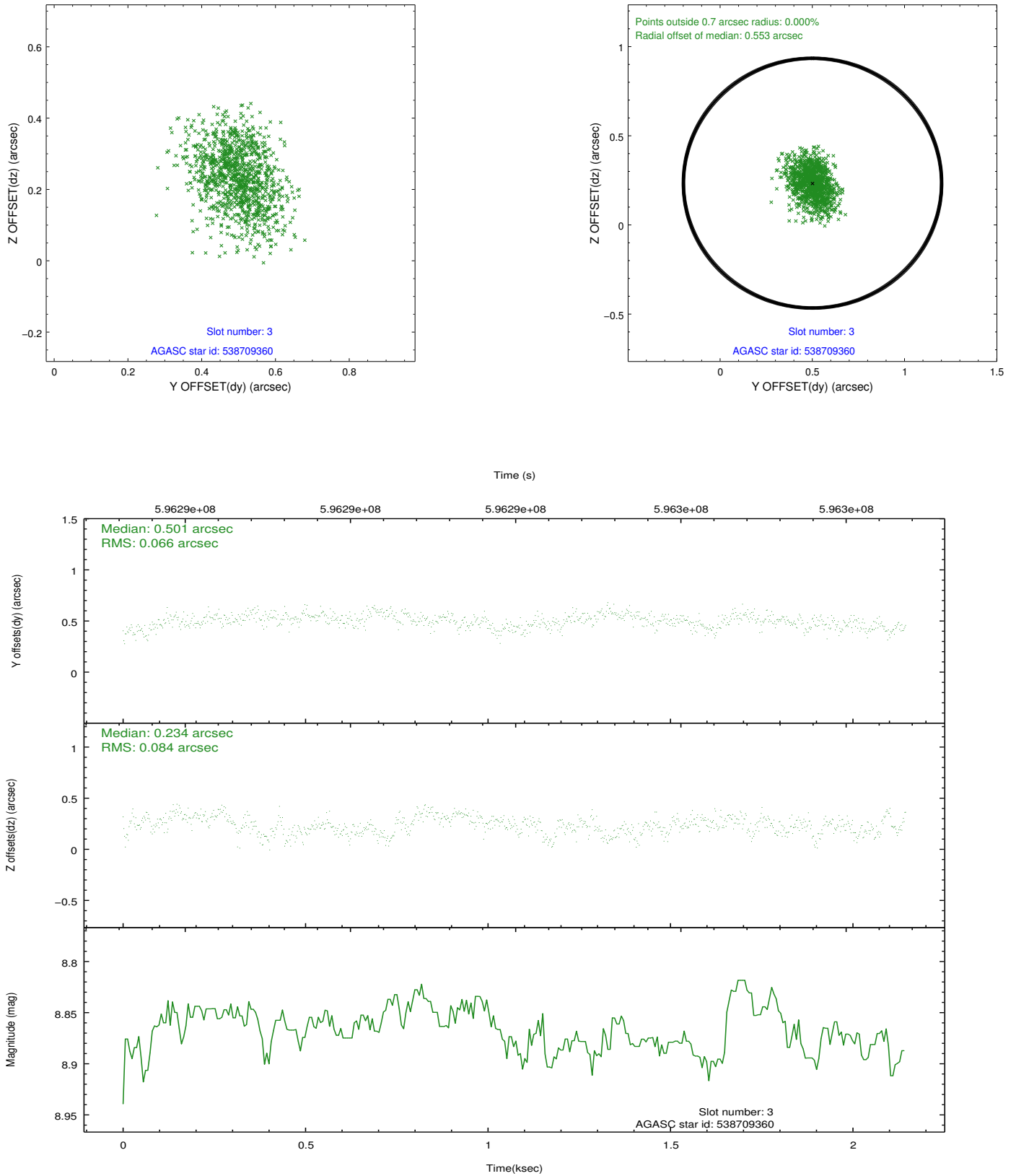
### Slot Statistics

slot	status	used	id	mag	n_pts	med_dy	med_dz	dr1	dr2	ra	dec	mean_y	mean_z
0	FID		ACIS-S-2	7.12	524	-0.281	-0.182	0.006	0.010	0.000000	0.000000	-770.94	-1740.94
1	FID		ACIS-S-4	7.24	524	0.315	0.163	0.007	0.010	0.000000	0.000000	2141.56	164.68
2	FID		ACIS-S-6	7.36	524	-0.060	0.026	0.008	0.014	0.000000	0.000000	395.18	805.43
3	GUIDE	used	538709360	8.87	1047	0.501	0.234	0.113	0.191	104.890448	61.858697	-1690.24	351.70
4	GUIDE	used	539235368	9.12	1046	0.291	-0.345	0.132	0.216	104.337758	62.551649	912.53	-196.20
5	GUIDE	used	539237712	9.03	1046	0.162	0.309	0.116	0.201	105.222026	62.200385	-940.95	-773.54
6	GUIDE	used	539241240	9.31	1044	0.050	0.044	0.135	0.226	104.146976	62.075699	-358.44	995.19
7	GUIDE	used	539242848	8.89	1046	-1.007	-0.249	0.135	0.218	103.909622	62.191072	206.54	1107.37

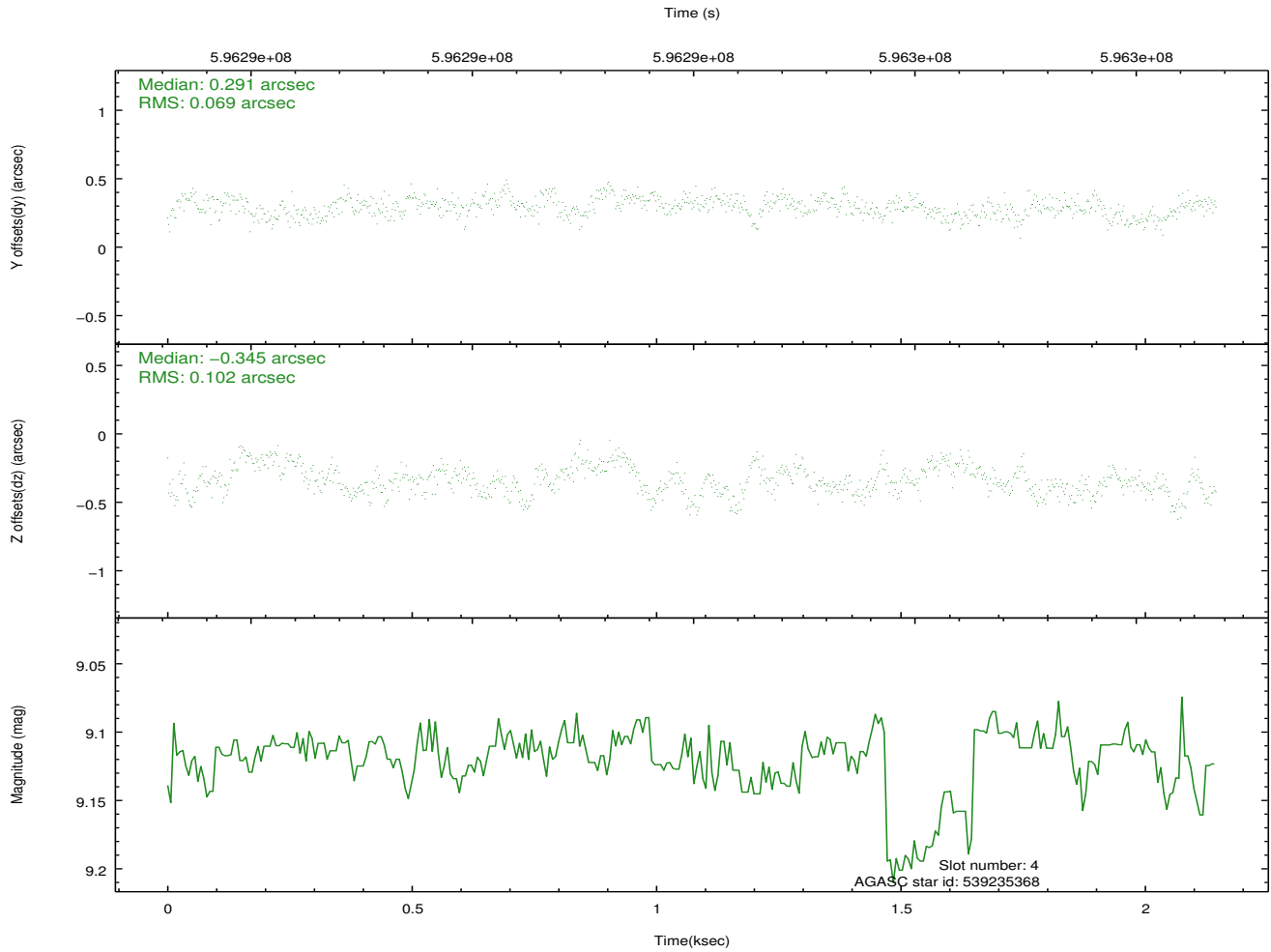
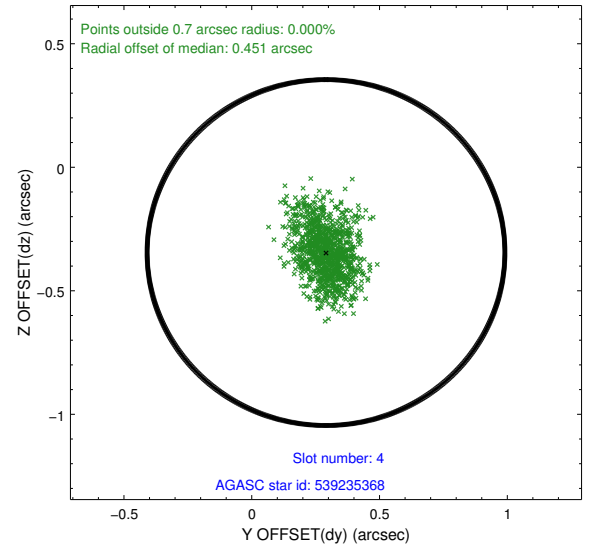
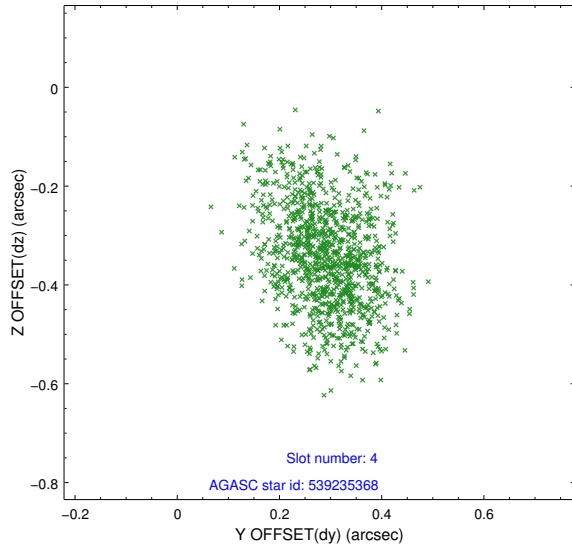


## 2.4 Star Slots

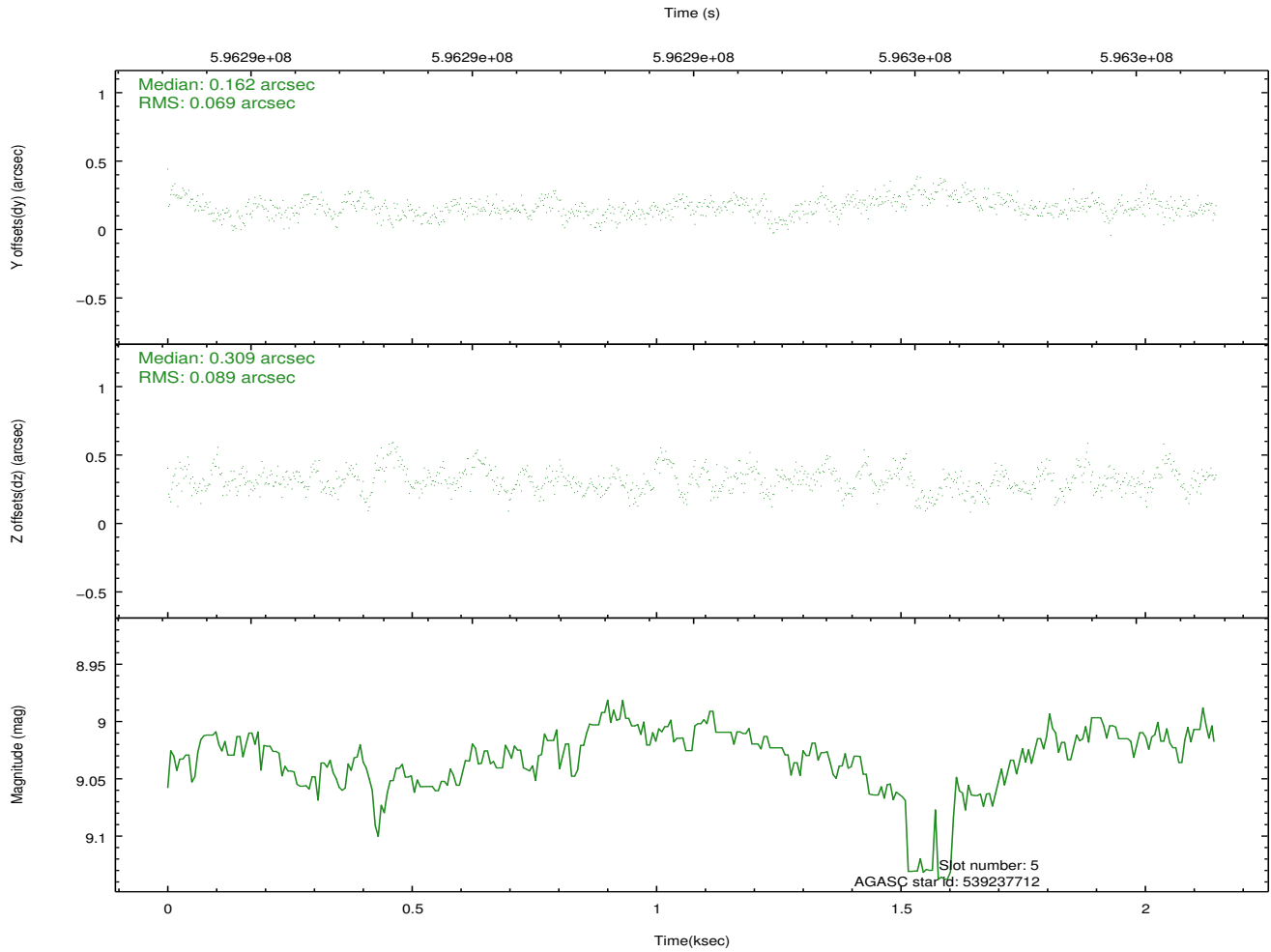
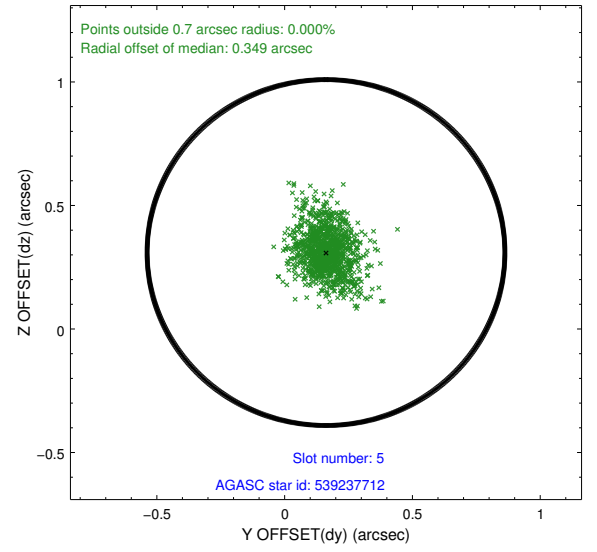
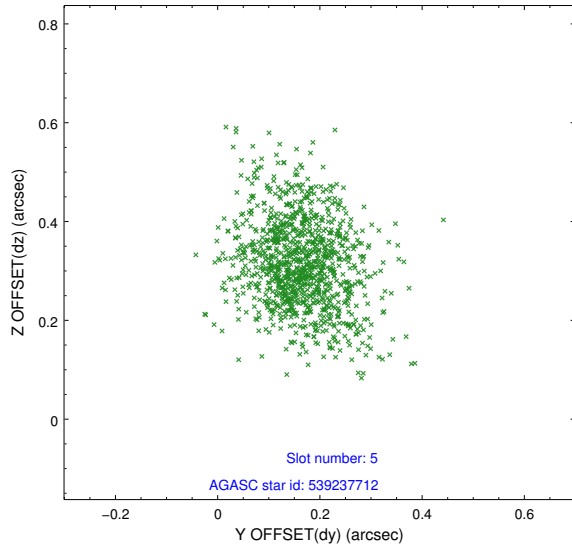
### 2.4.1 Slot 3



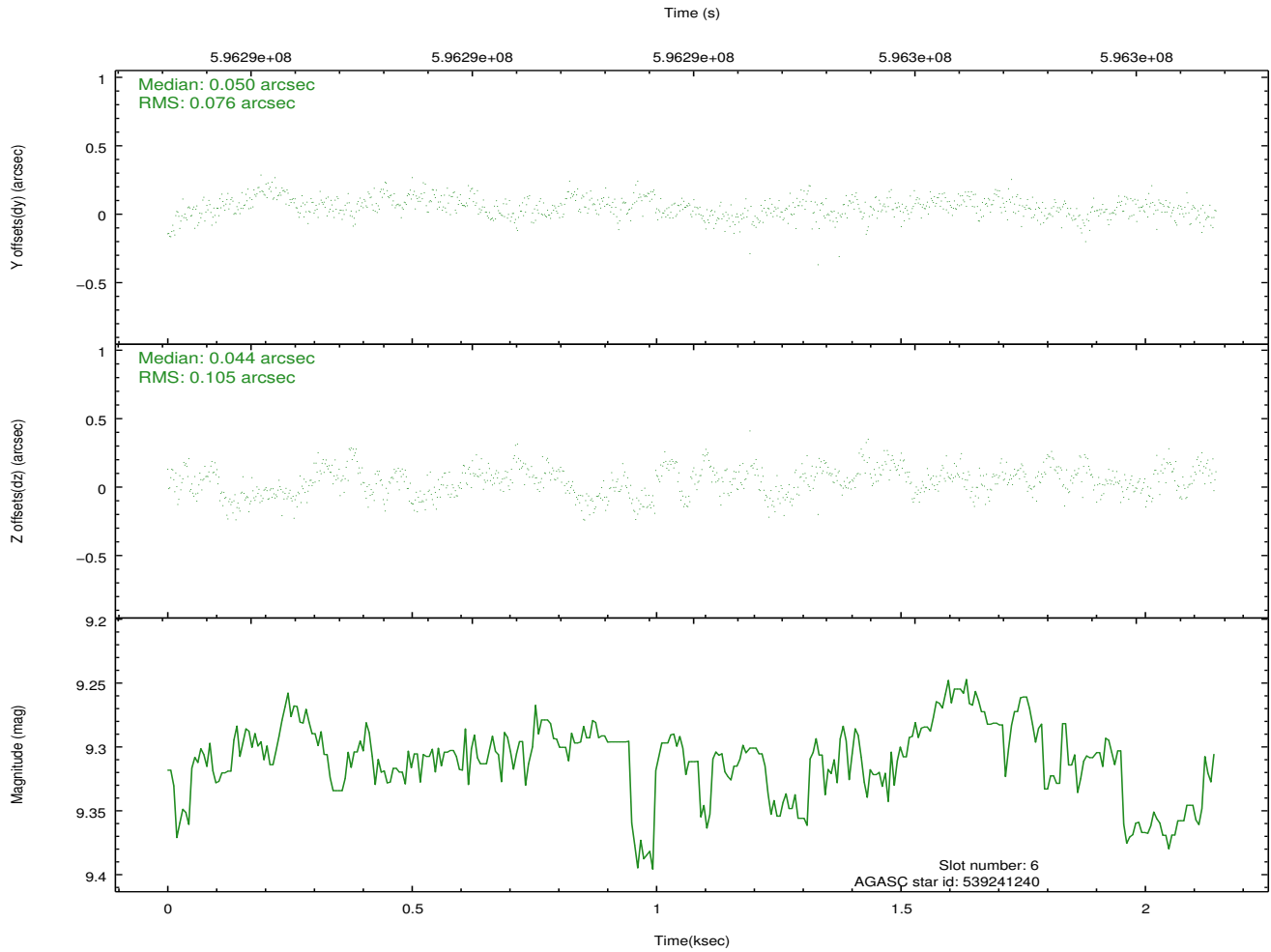
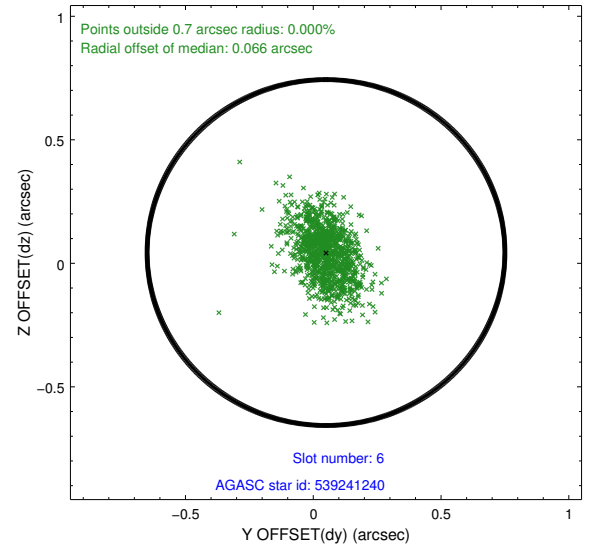
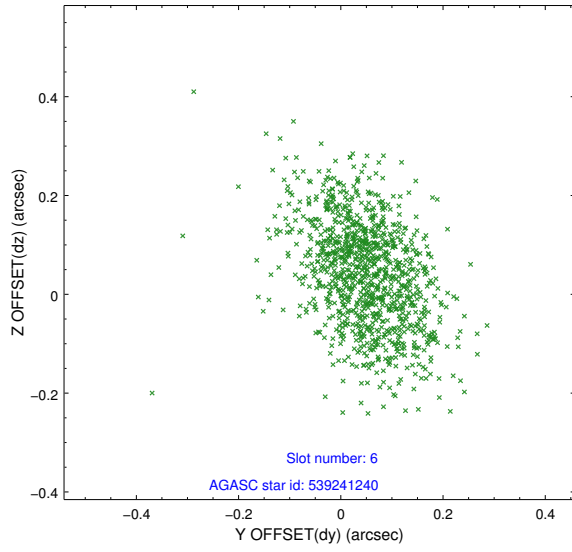
## 2.4.2 Slot 4



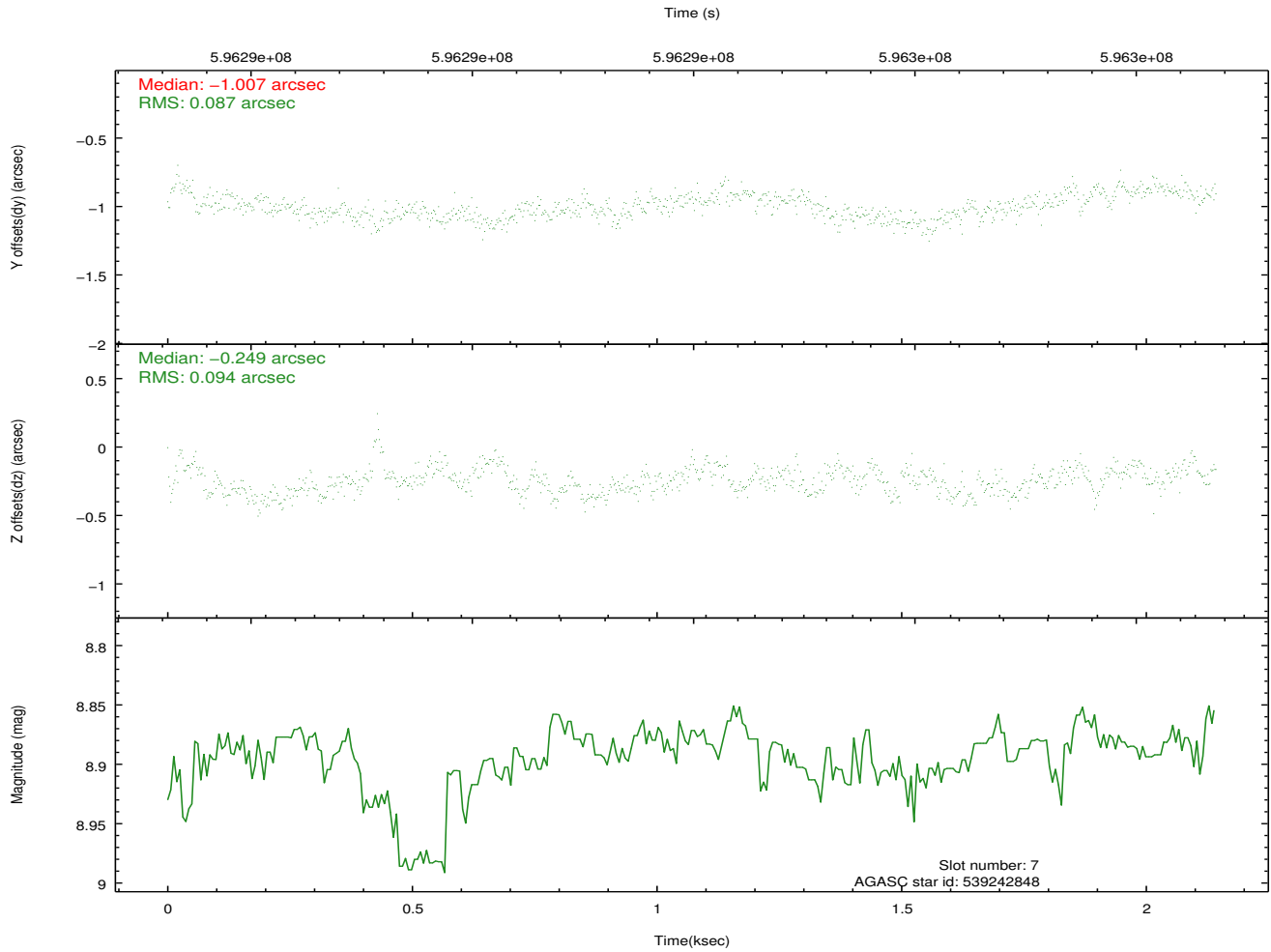
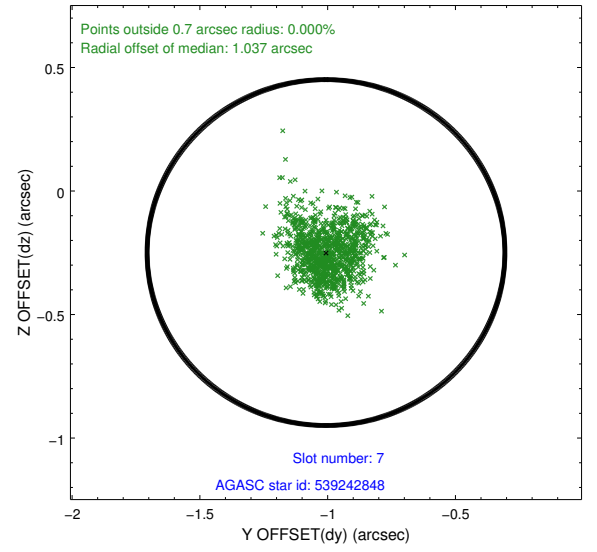
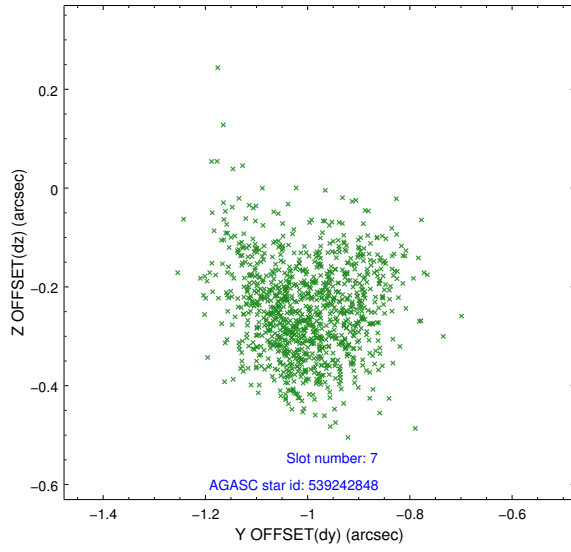
### 2.4.3 Slot 5



## 2.4.4 Slot 6

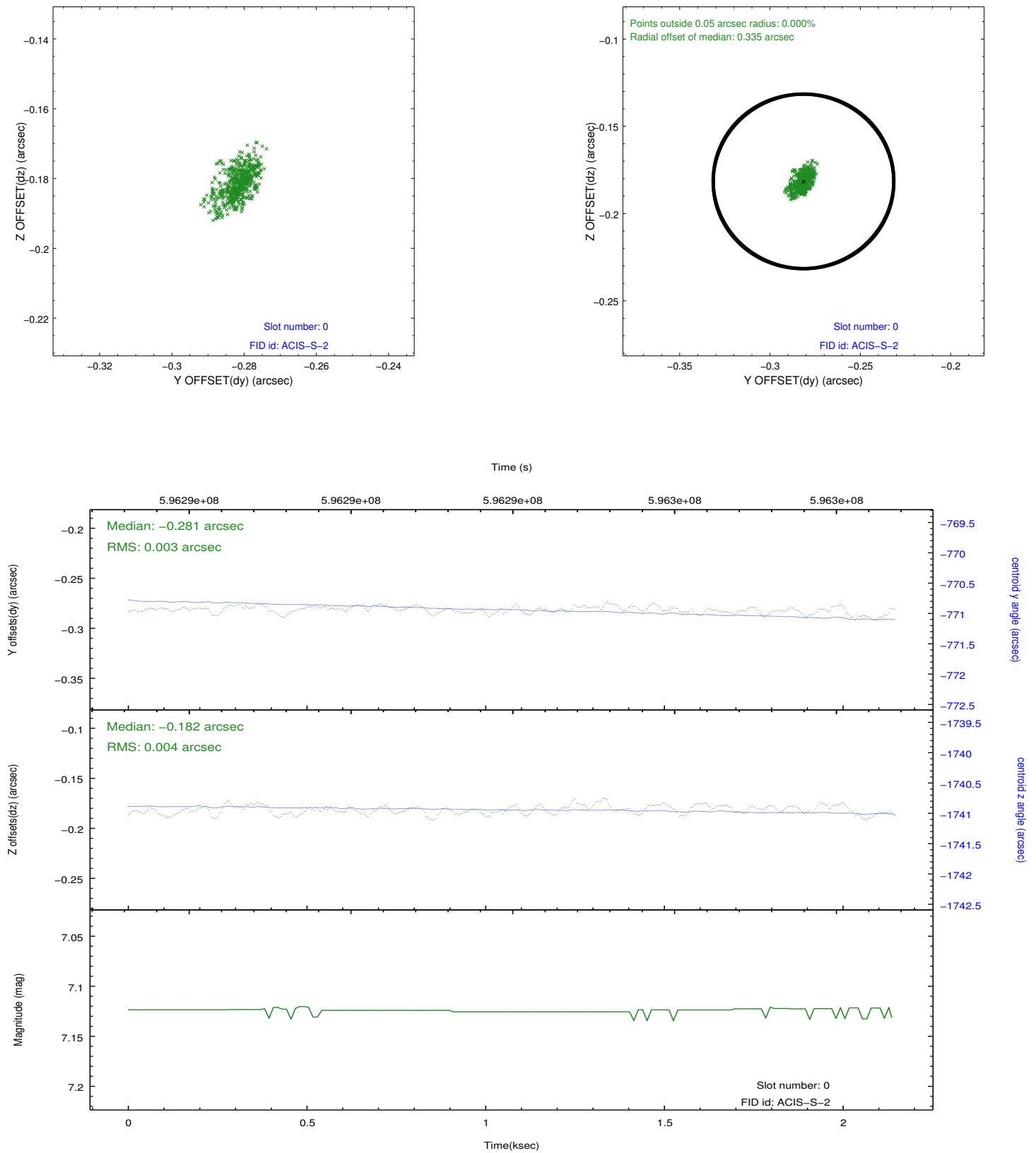


## 2.4.5 Slot 7

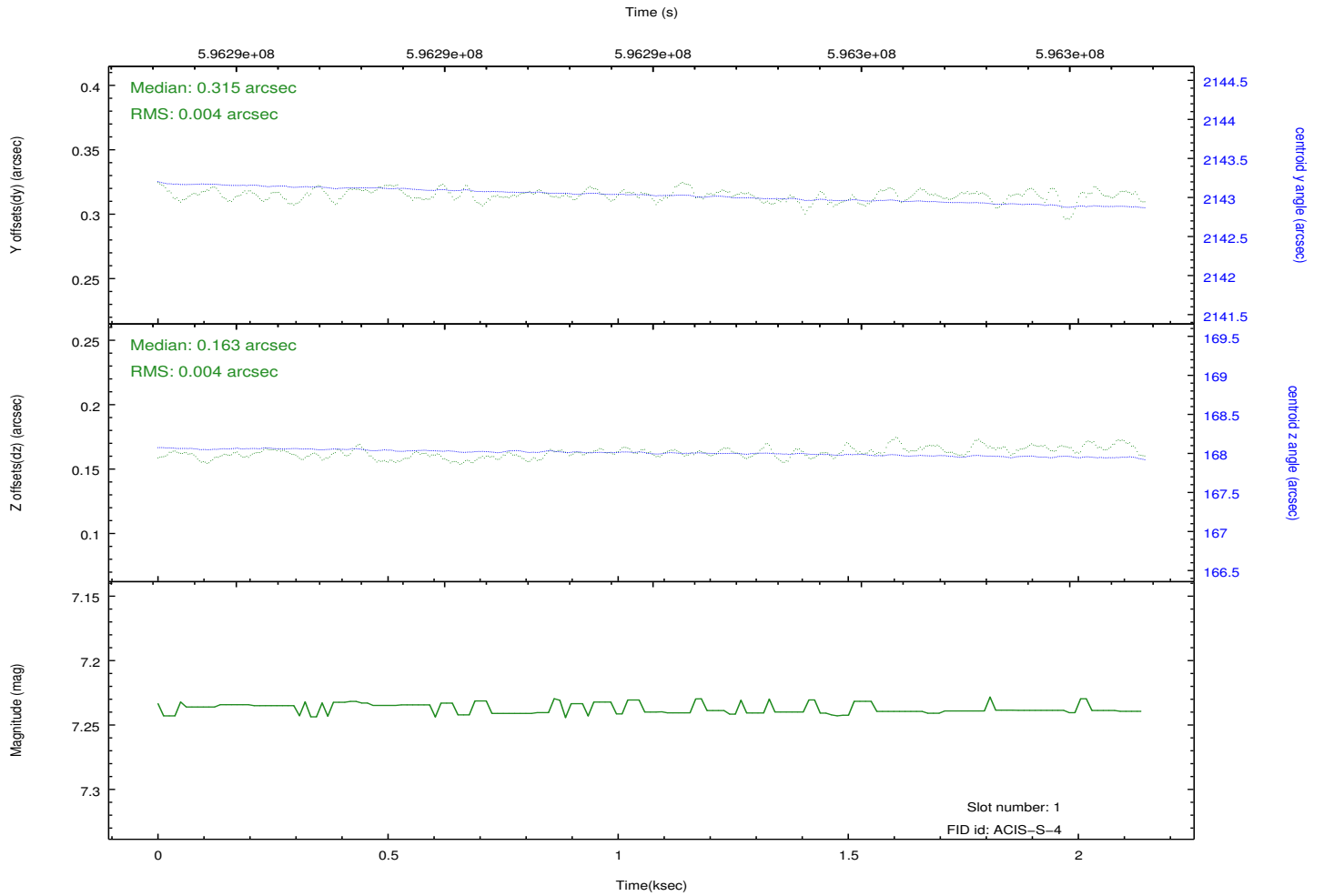
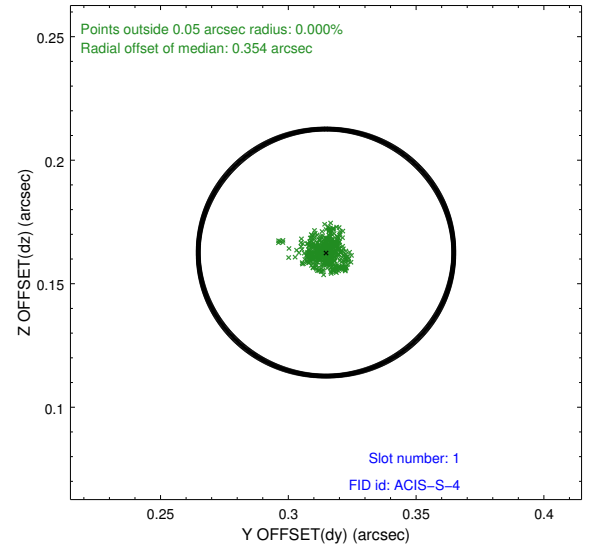
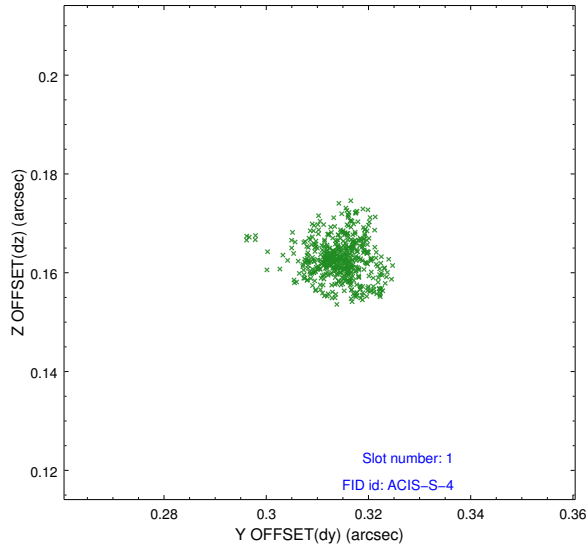


## 2.5 FID Slots

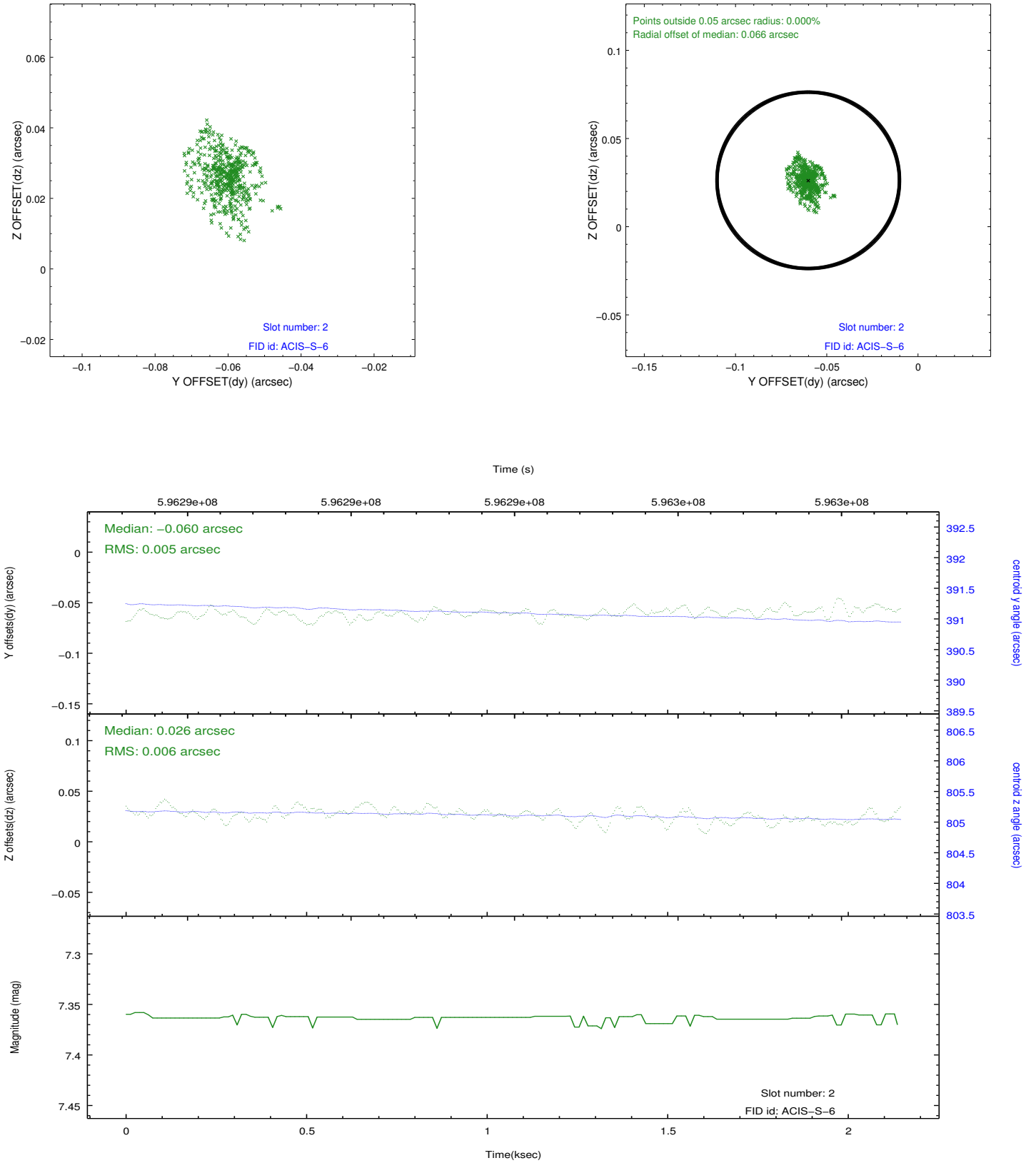
### 2.5.1 Slot 0



## 2.5.2 Slot 1



### 2.5.3 Slot 2





## A Summary

### A.1 Status

V&V Scientist	Beth Sundheim
V&V Date (YYYY-MM-DD)	2016.11.24
V&V Edition	1
V&V Disposition and Status	OK
V&V Charge Time	1.9360000288486

### A.2 Comments