

V&V Reference Report

L2 ASCDS Version : 10.5.2

Observation 18895 - L2 Version 1
Chandra X-Ray Center

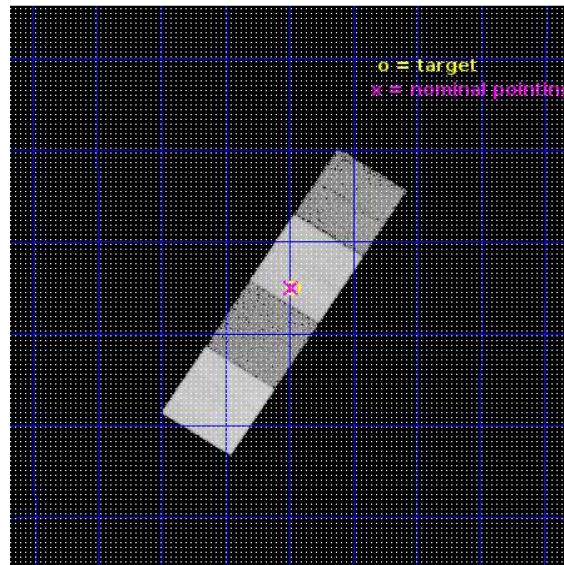
L2 Processing Date : Apr 7 2017

Contents

1	Front	2
2	OBI	3
2.1	OBI	3
2.1.1	Images	3
2.1.2	Bias	3
2.1.3	Parameters	4
2.1.4	Events	4
2.2	Compared Parameters	5
2.3	Aspect	6
2.4	Star Slots	9
2.4.1	Slot 3	9
2.4.2	Slot 4	10
2.4.3	Slot 5	11
2.4.4	Slot 6	12
2.4.5	Slot 7	13
2.5	FID Slots	14
2.5.1	Slot 0	14
2.5.2	Slot 1	15
2.5.3	Slot 2	16
A	Summary	17
A.1	Status	17
A.2	Comments	17

1 Front

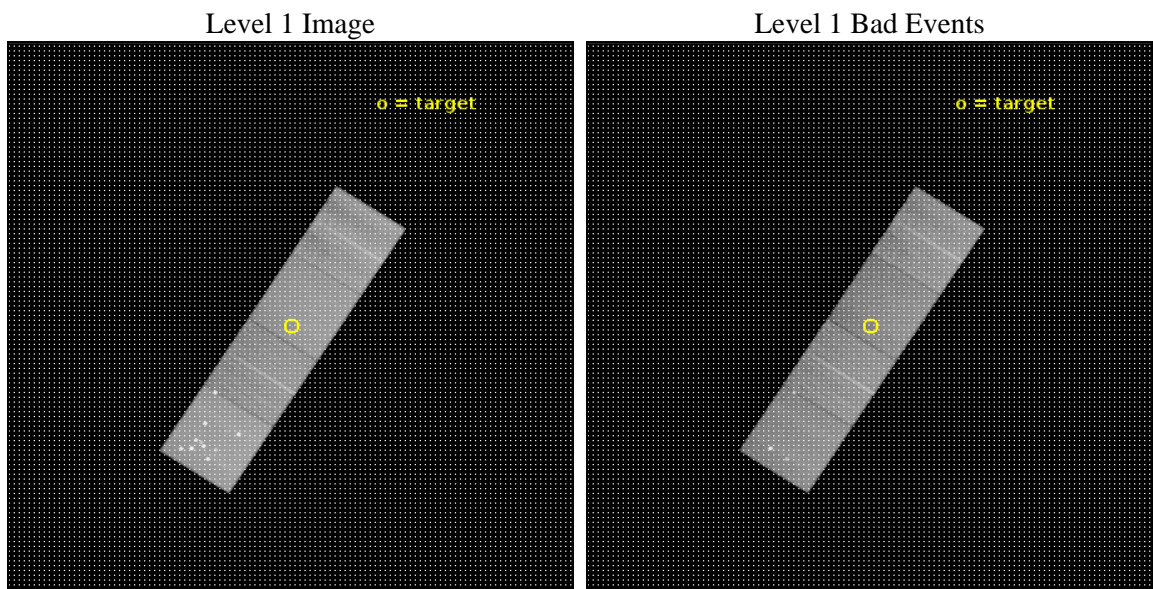
seq_num	201088	Sequence number
obs_id	18895	Observation id
title	X-rays from Young Low-Mass Stars: Inhospitable Habitable Zones?	Pr
observer	Joel Kastner	Principal investigator
object	J1111-2655	Source name
dtcycle	0	
cycle	P	events from which exps? Prim/Second/Both
ra_targ	167.866667	Observer's specified target RA [deg]
dec_targ	-26.917222	Observer's specified target Dec [deg]
ra_nom	167.87069743493	Nominal RA [deg]
dec_nom	-26.916875780865	Nominal Dec [deg]
roll_nom	302.65877768887	Nominal Roll [deg]
revision	1	Processing version of data
ontime	27087.800208449	Sum of GTIs [s]
livetime	26733.878156978	Livetime [s]
ontime5	27087.800208449	Sum of GTIs [s]
ontime6	27087.800208449	Sum of GTIs [s]
ontime7	27087.800208449	Sum of GTIs [s]
ontime8	27075.235967636	Sum of GTIs [s]
l2events	271591	Number of level 2 events



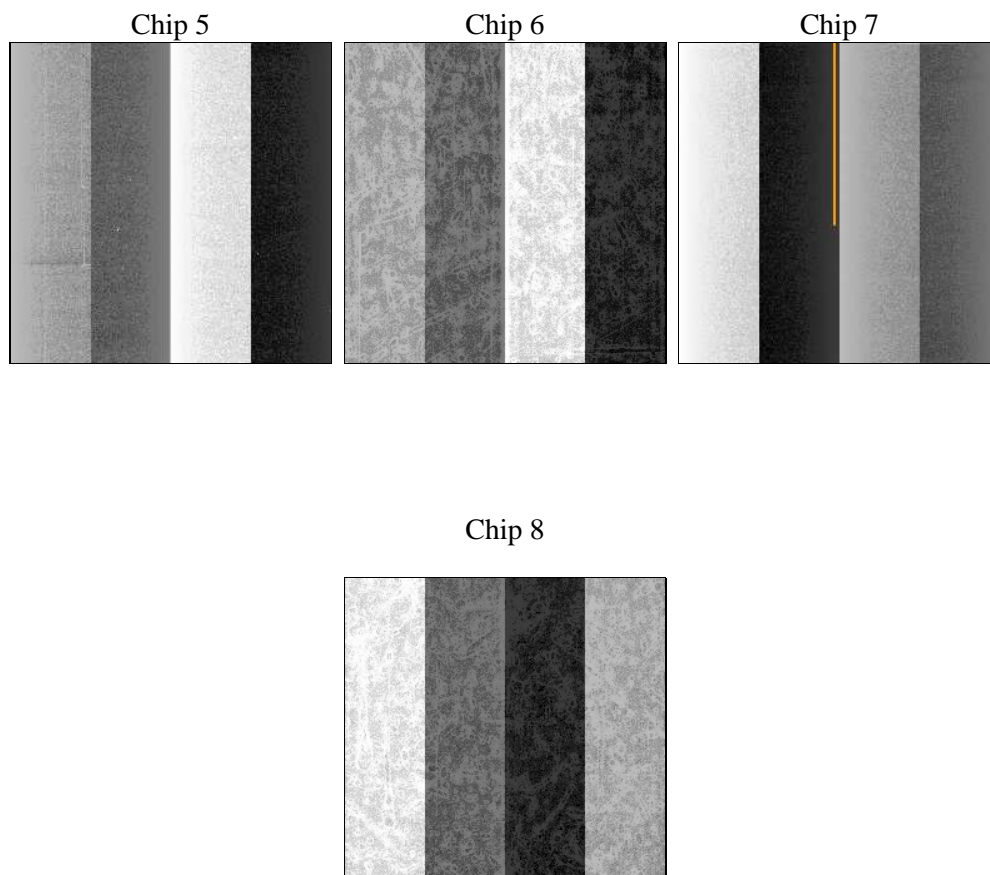
2 OBI

2.1 OBI

2.1.1 Images



2.1.2 Bias



2.1.3 Parameters

obi_num	1	Obi number	sched_exp_time	27300.000000	[s] Scheduled observation exposure time
ascdsver	10.5.2	Processing system revision	ontime	27087.800208449	Sum of GTIs [s]
caldsver	4.7.3	 	ontime5	27087.800208449	Sum of GTIs [s]
date	2017-04-07T16:35:42	Date and time of file creation	ontime6	27087.800208449	Sum of GTIs [s]
revision	1	Processing version of data	ontime7	27087.800208449	Sum of GTIs [s]
			ontime8	27075.235967636	Sum of GTIs [s]
			l1events	1048386	Number of level 1 events

2.1.4 Events

	ccd 5	ccd 6	ccd 7	ccd 8
level 1 events	363155	195537	240425	249269
rejected events	165751	174634	137737	187282
rejected %	45%	89%	57%	75%

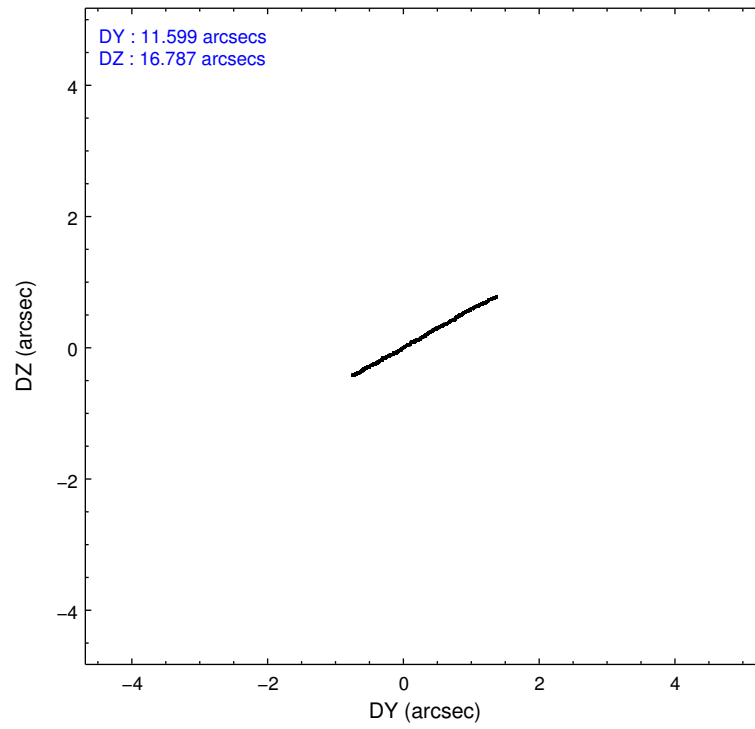
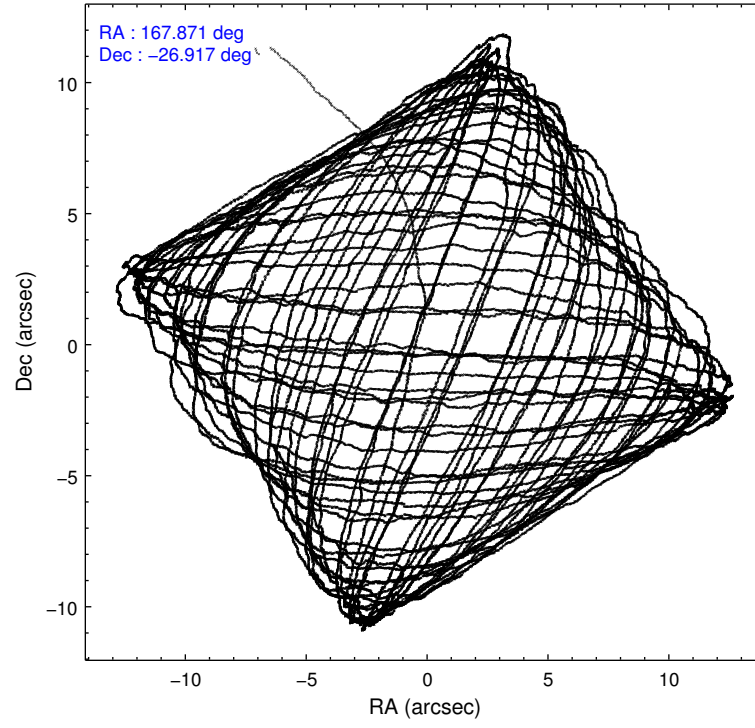
	ccd 5	ccd 6	ccd 7	ccd 8
grade 0 events	47966	6555	8267	16932
	13%	3%	3%	6%
grade 1 events	703	96	326	197
	0%	0%	0%	0%
grade 2 events	53443	5157	21994	15646
	14%	2%	9%	6%
grade 3 events	7149	2066	7840	6308
	1%	1%	3%	2%
grade 4 events	7455	1966	7630	5912
	2%	1%	3%	2%
grade 5 events	22215	8329	23282	13111
	6%	4%	9%	5%
grade 6 events	81445	5166	56979	17200
	22%	2%	23%	6%
grade 7 events	142779	166202	114107	173963
	39%	84%	47%	69%

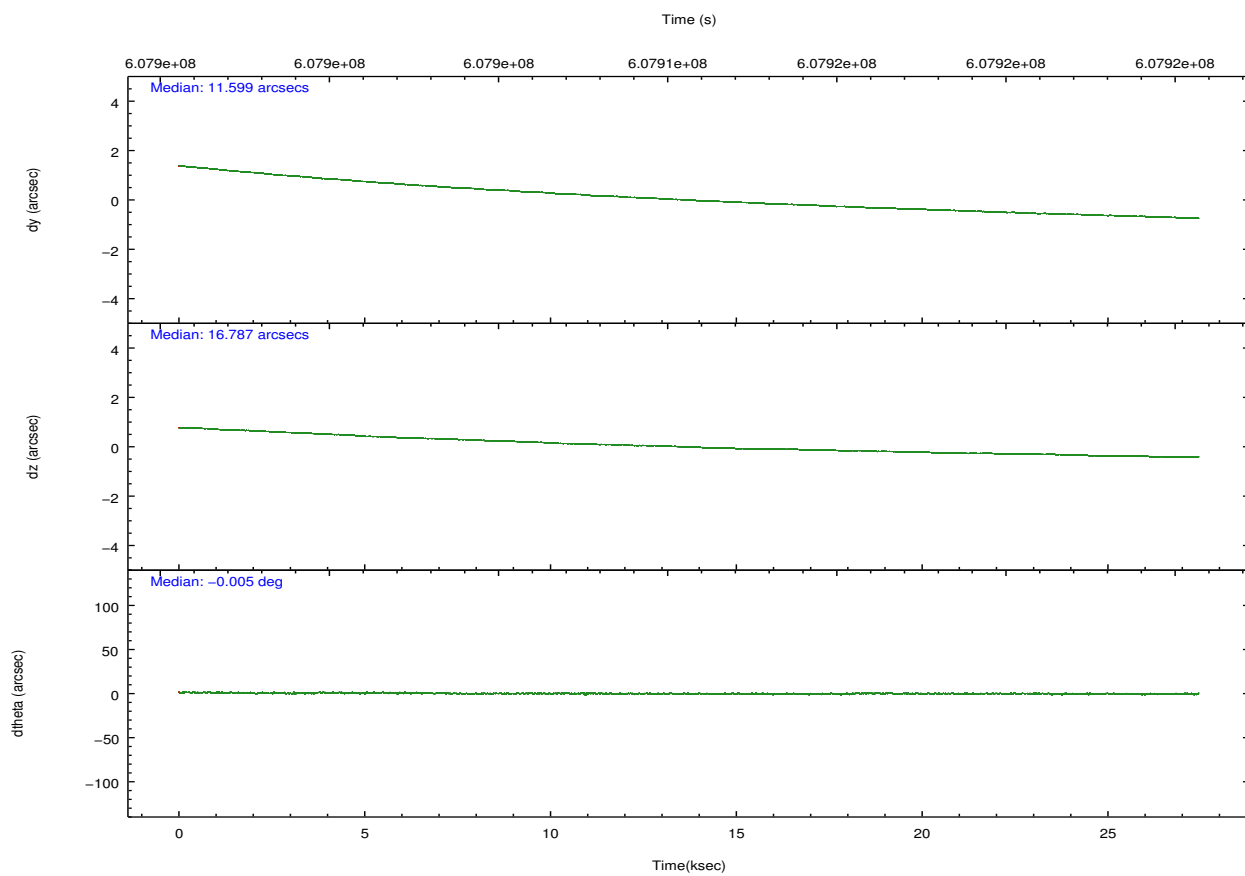
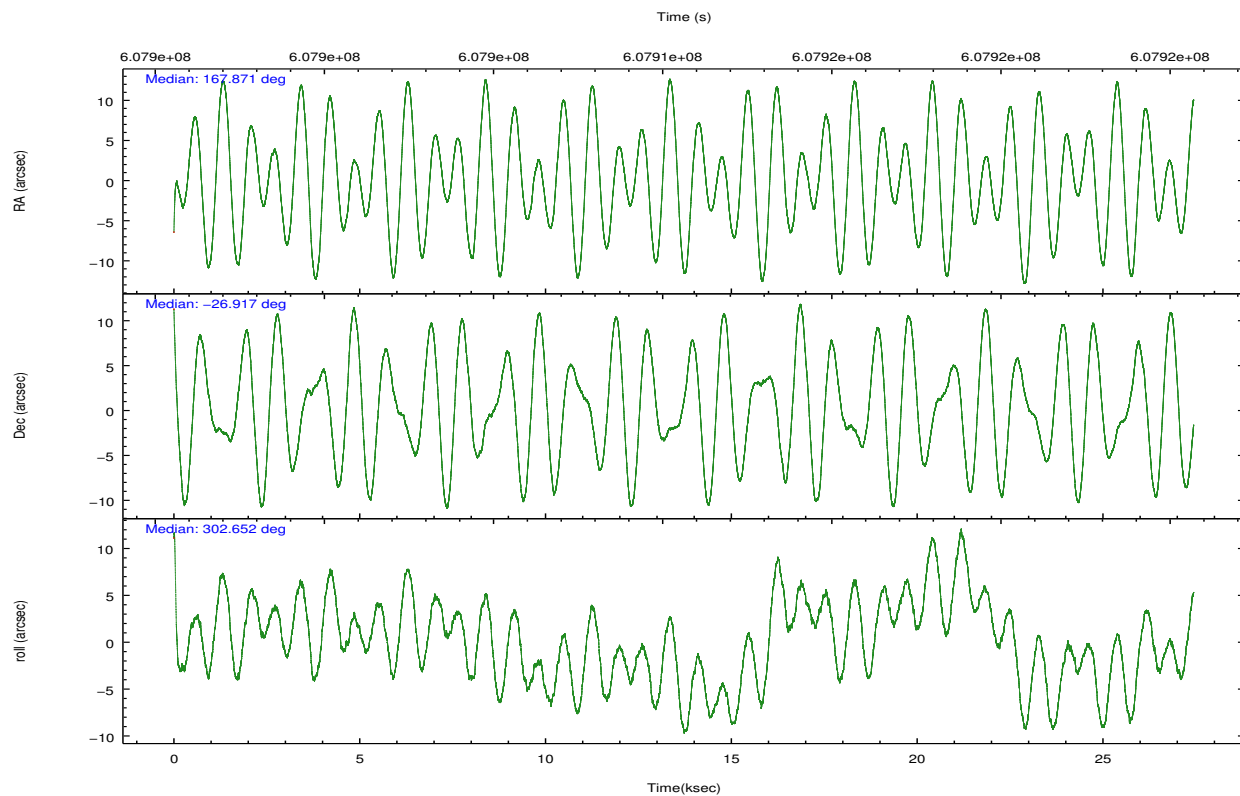
2.2 Compared Parameters

Parameter	Planned	Actual
Instrument	ACIS	ACIS
Detector	ACIS-5678	ACIS-5678
Grating	NONE	NONE
Data mode	VFAINT	VFAINT
Observation mode	POINTING	POINTING
[deg] Pointing RA	167.843180	167.8706974349308
[deg] Pointing Dec	-26.904576	-26.9168757808652
[deg] Pointing Roll	302.489689	302.6587776888731
[mm] SIM focus pos	-0.684267	-0.6828225247311905
[mm] SIM defocus	0	0.001444936568705701
[mm] SIM translation stage pos	-190.132523	-190.1425803651734
[mm] SIM translation stage offset	0	0.01005778216563158
[s] Observation start time (MET)	607897047.184000	607895716.5808001
Observation start date	2017-04-06T20:16:18	2017-04-06T19:55:16
[s] Observation end time (MET)	607924347.184000	607925385.20753
Observation end date	2017-04-07T03:51:18	2017-04-07T04:09:45
Read mode	TIMED	TIMED

Parameter	Planned	Actual
Obspar format version number	7	7
Obspar file type	PREDICTED	ACTUAL
Obspar update status	NONE	UPDATED
CCD I0 on	N	N
CCD I1 on	N	N
CCD I2 on	O1	N
CCD I3 on	O2	N
CCD S0 on	N	N
CCD S1 on	Y	Y
CCD S2 on	Y	Y
CCD S3 on	Y	Y
CCD S4 on	Y	Y
CCD S5 on	N	N
Number of optional ACIS chips dropped	2	2
On-chip summing requested	N	N
Subarray requested	NONE	NONE
Alternating exposures requested	N	N
[s] Primary exposure time	0.000000	3.1

2.3 Aspect



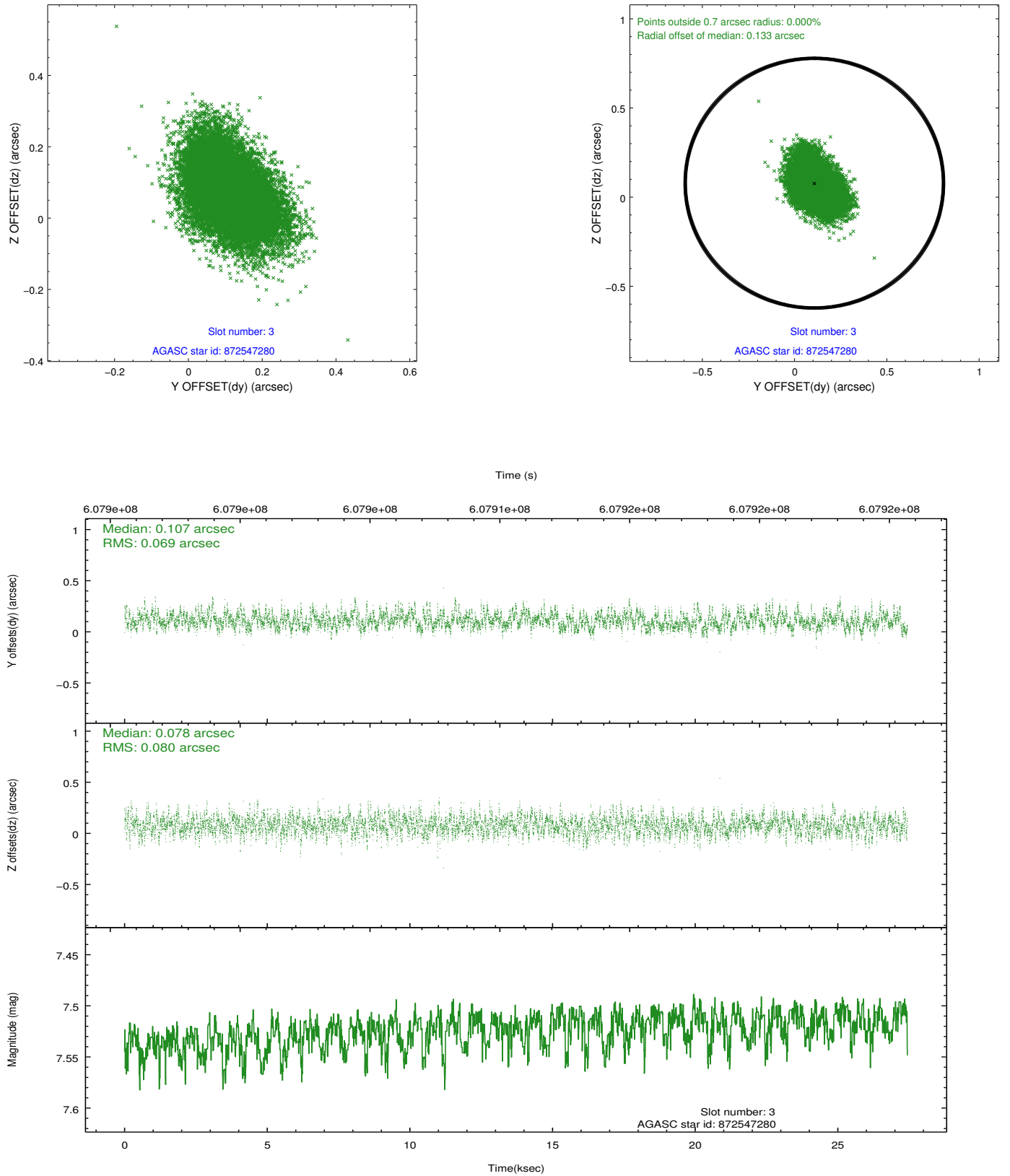


Slot Statistics

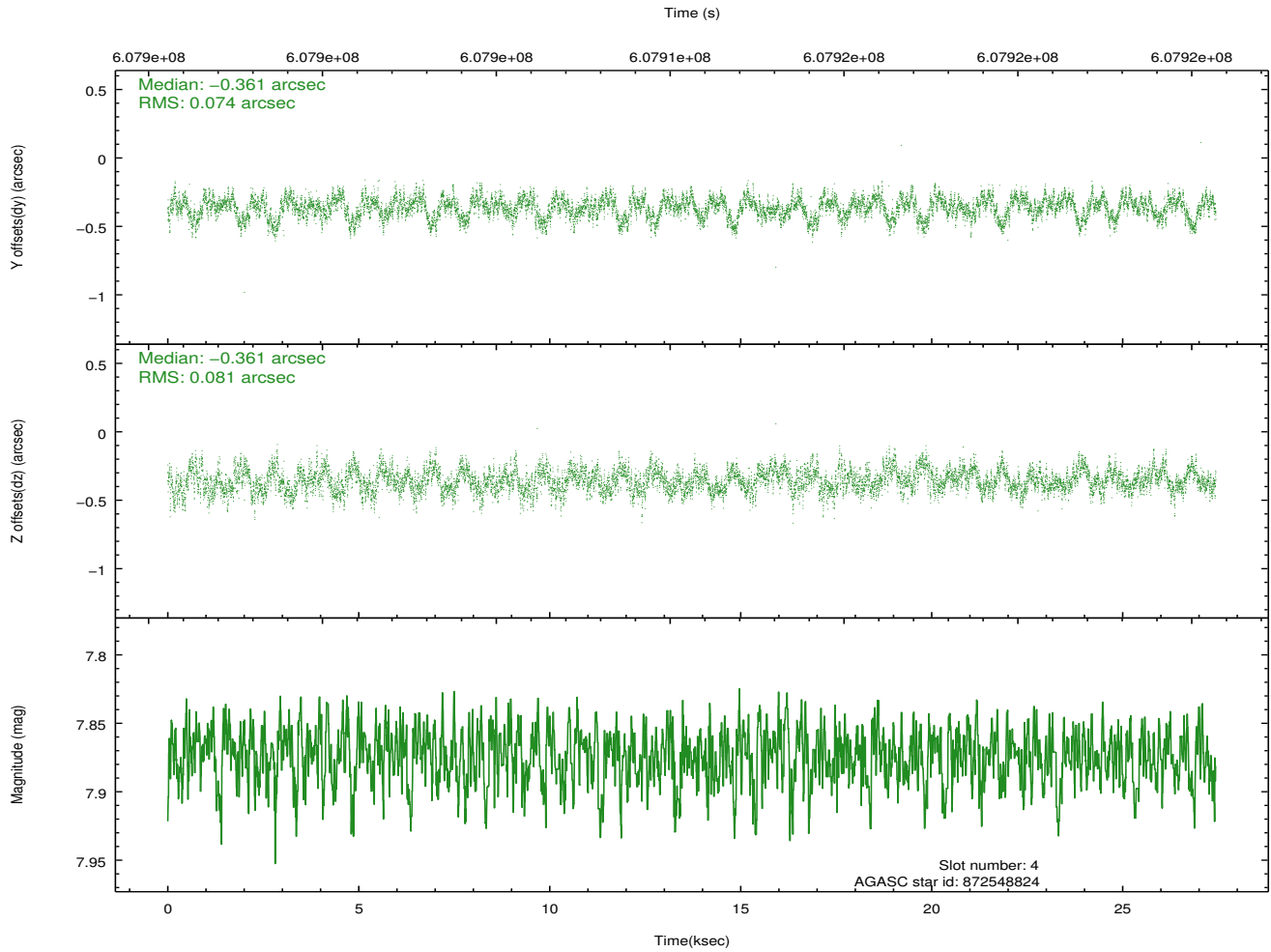
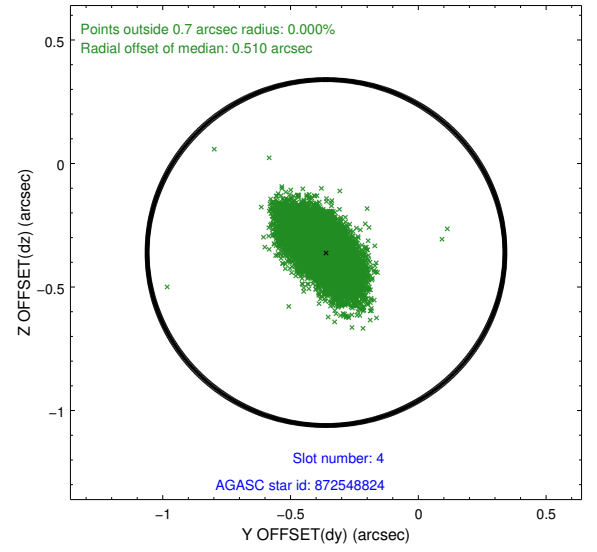
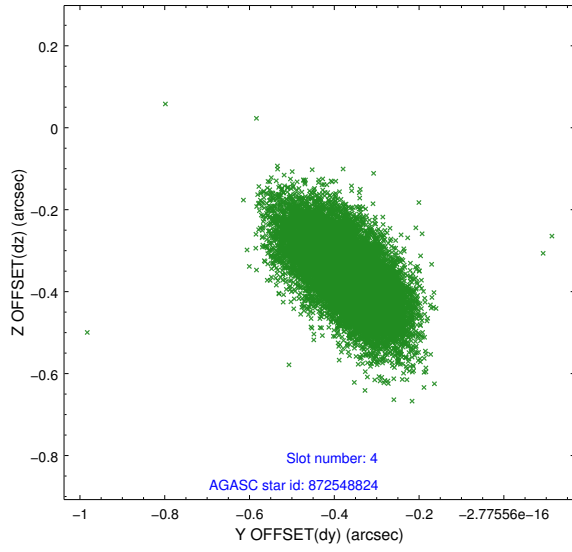
slot	status	used	id	mag	n_pts	med_dy	med_dz	dr1	dr2	ra	dec	mean_y	mean_z
0	FID		ACIS-S-2	7.06	6693	-0.152	-0.077	0.020	0.039	0.000000	0.000000	-764.71	-1738.31
1	FID		ACIS-S-4	7.19	6694	0.408	0.095	0.010	0.033	0.000000	0.000000	2149.07	170.28
2	FID		ACIS-S-5	7.19	6694	-0.283	-0.010	0.021	0.064	0.000000	0.000000	-1817.59	163.91
3	GUIDE	used	872547280	7.52	13380	0.107	0.078	0.111	0.185	168.302072	-26.465072	-538.35	2095.53
4	GUIDE	used	872548824	7.87	13386	-0.361	-0.361	0.114	0.196	168.573824	-27.061456	1739.76	1668.57
5	GUIDE	used	872549104	8.06	13386	0.056	0.075	0.098	0.159	168.431052	-26.854580	865.64	1686.73
6	GUIDE	used	872554768	7.17	13386	0.129	0.103	0.116	0.197	167.532636	-27.531875	1373.87	-2049.74
7	GUIDE	used	872548672	8.88	13373	0.068	0.100	0.116	0.194	168.474975	-26.730685	567.01	2046.70

2.4 Star Slots

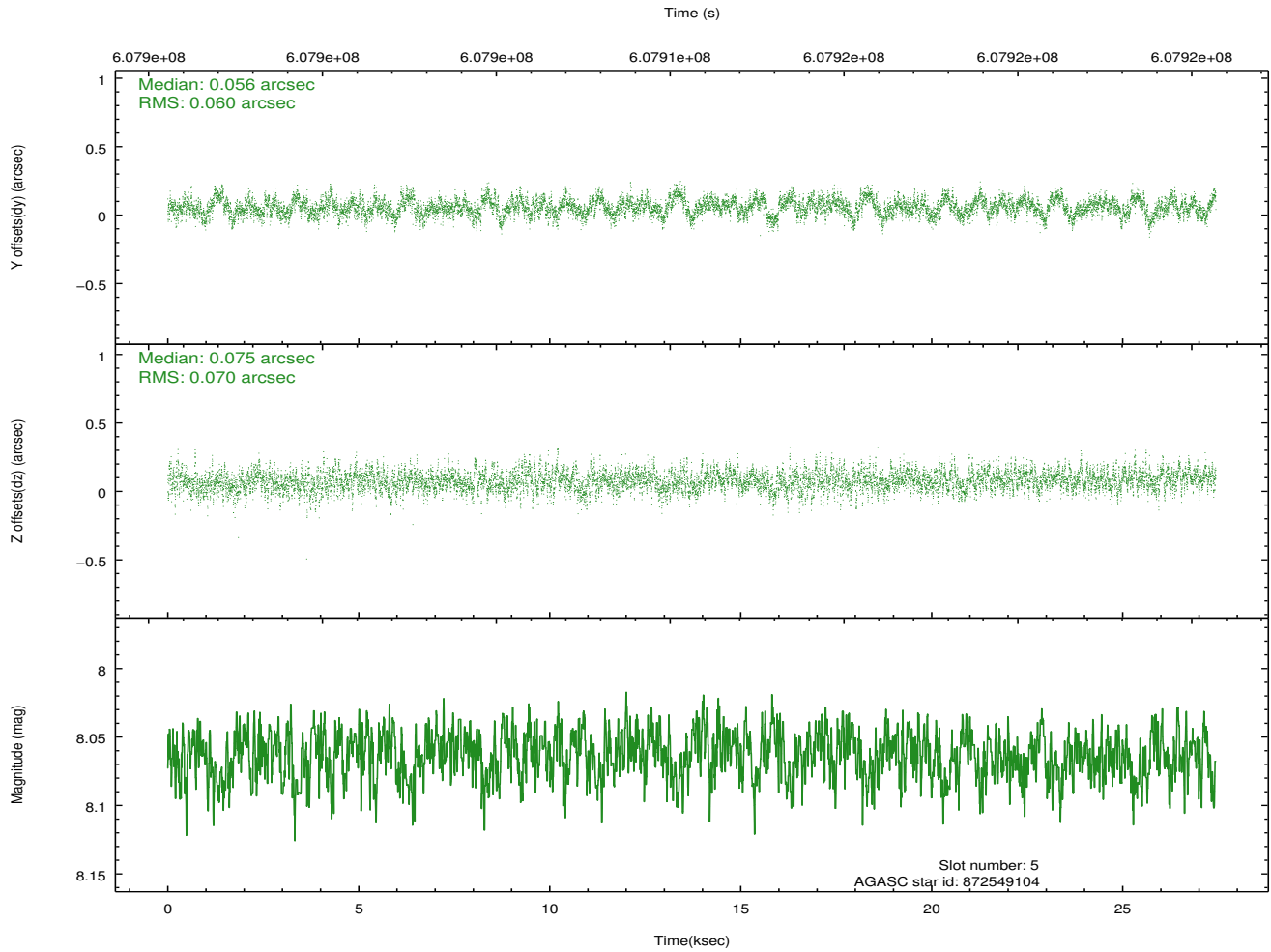
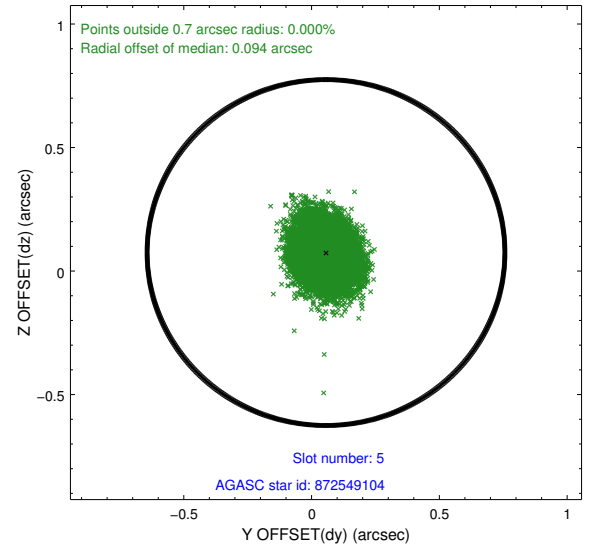
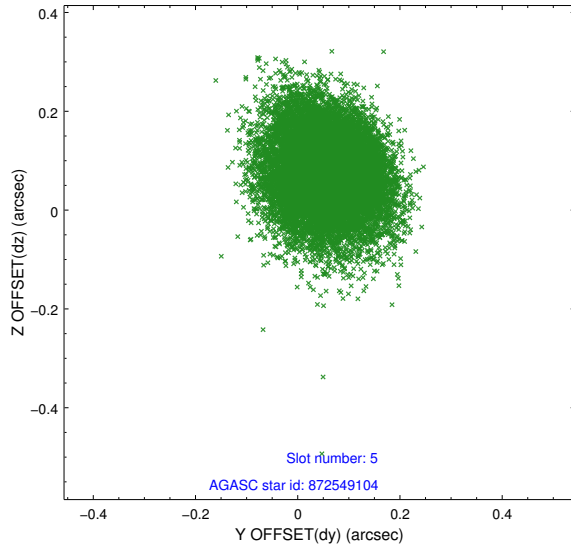
2.4.1 Slot 3



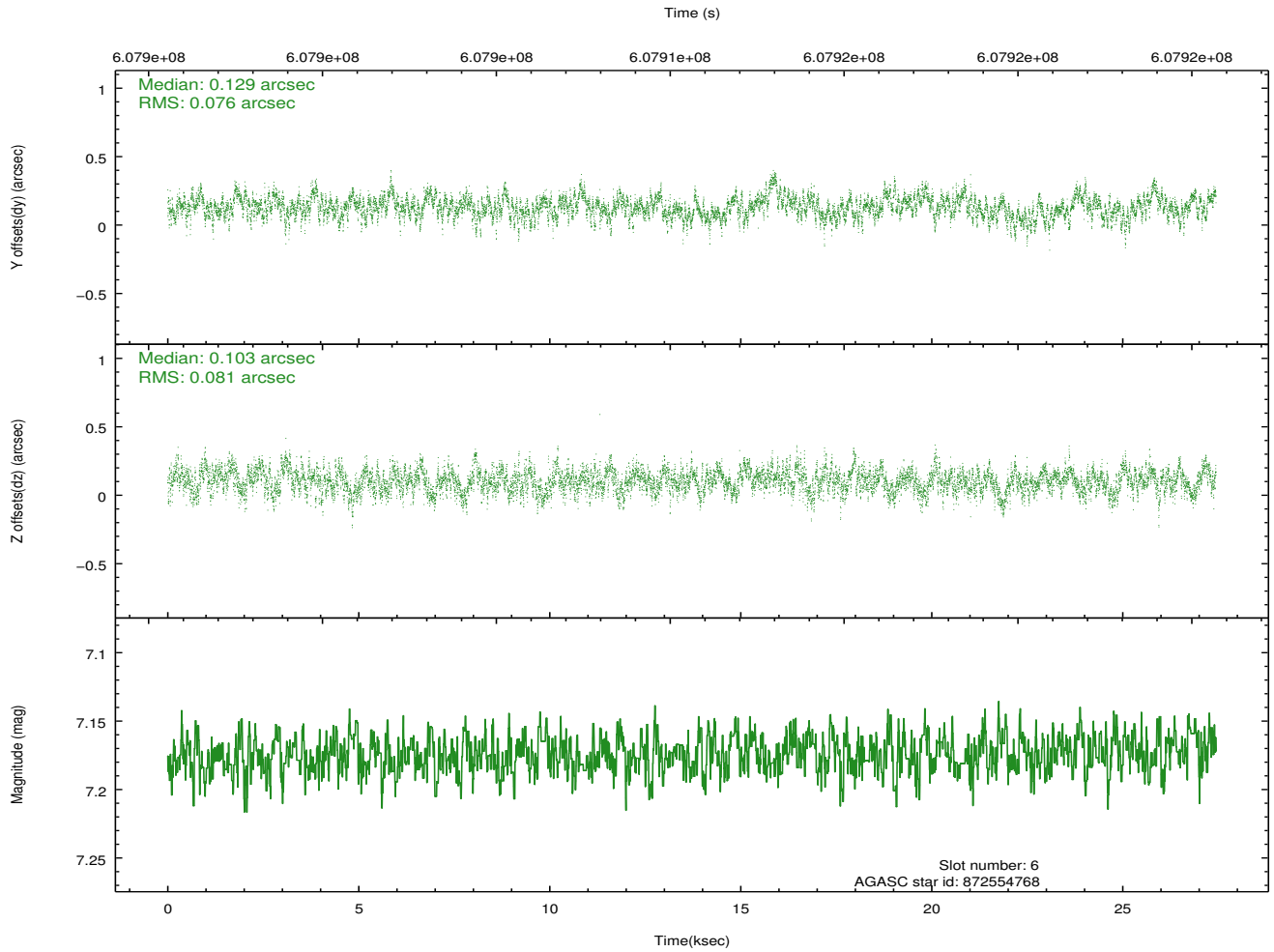
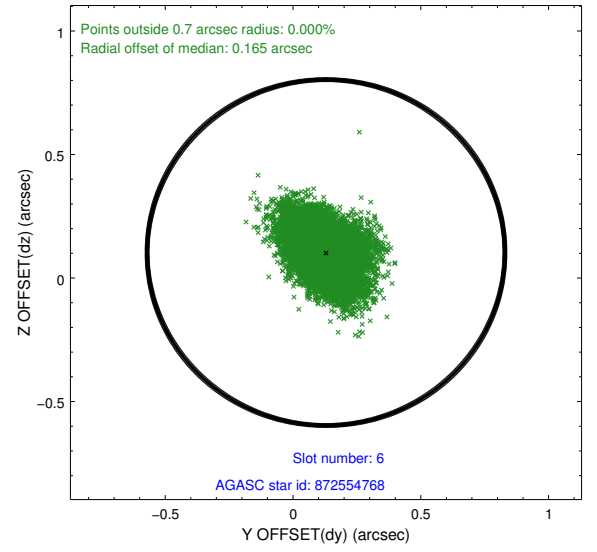
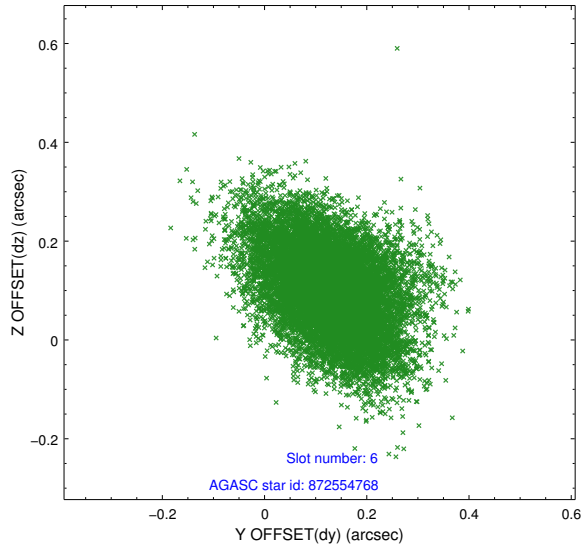
2.4.2 Slot 4



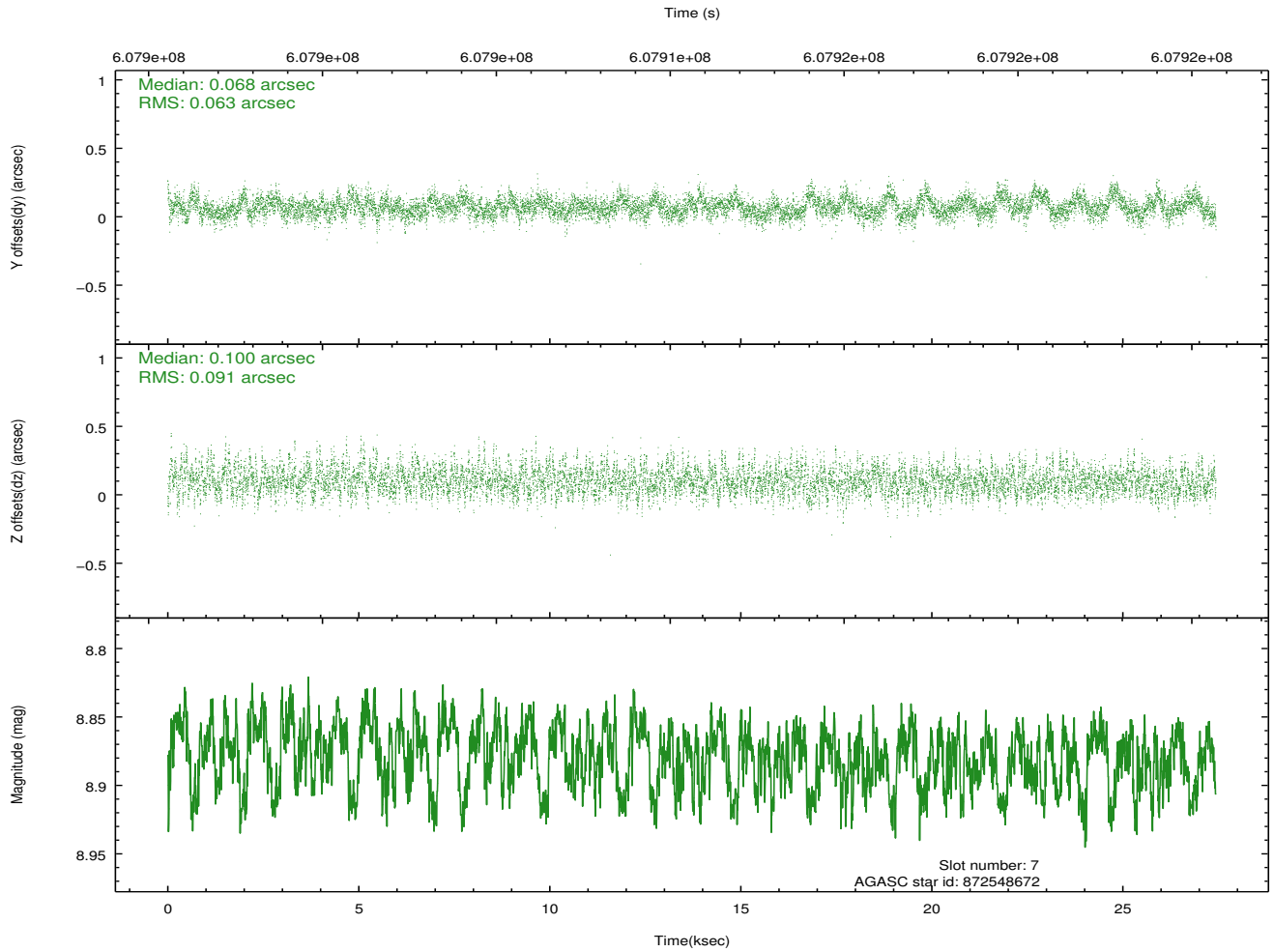
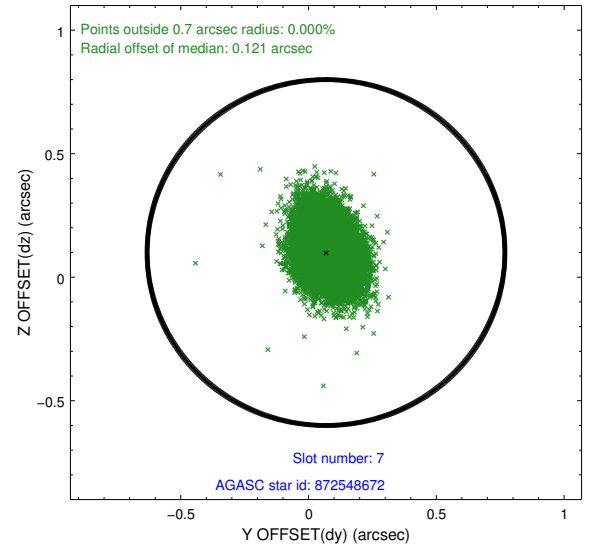
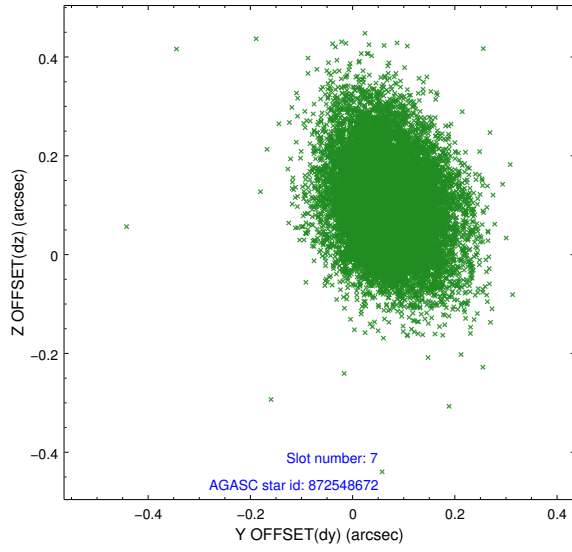
2.4.3 Slot 5



2.4.4 Slot 6

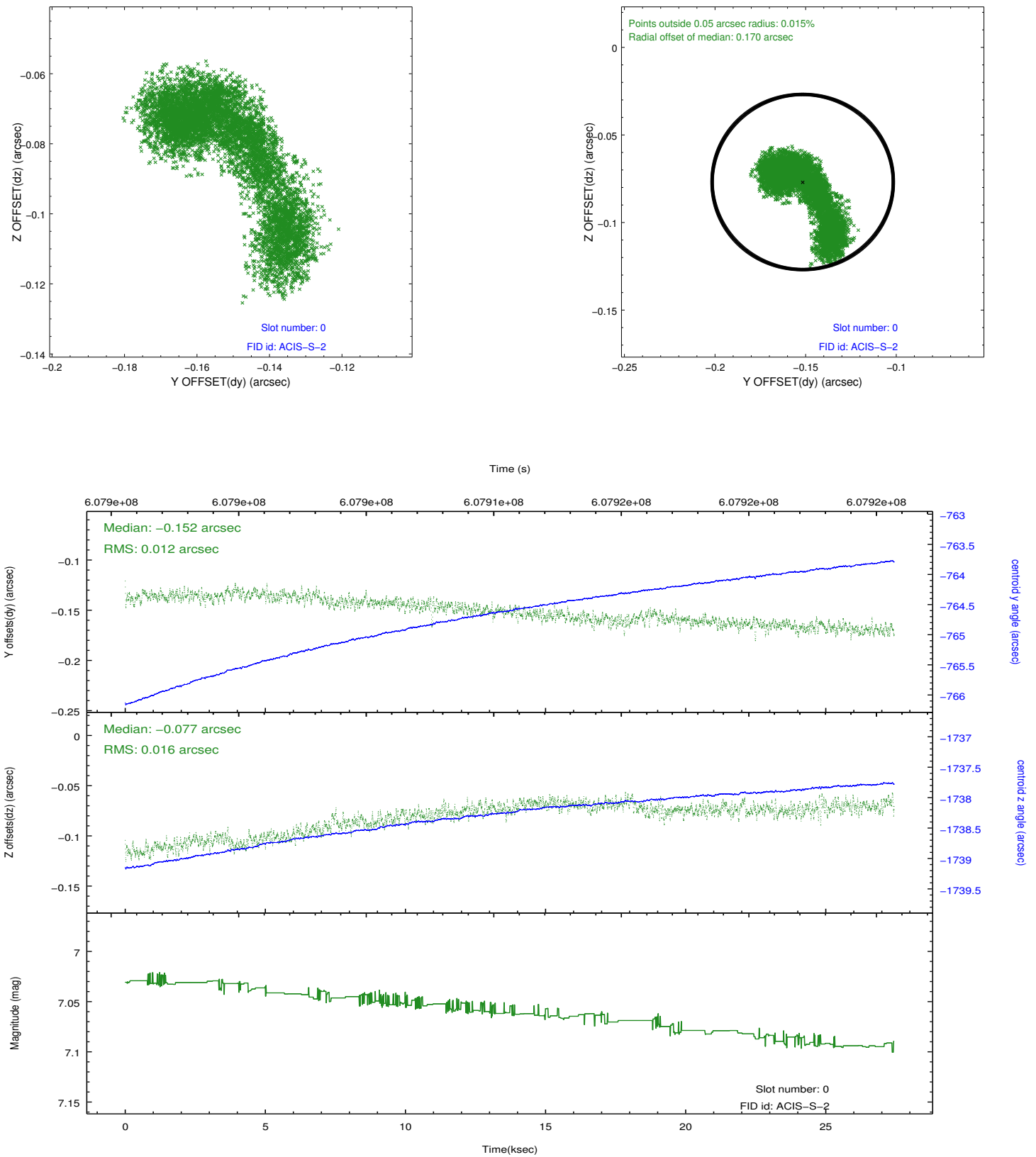


2.4.5 Slot 7

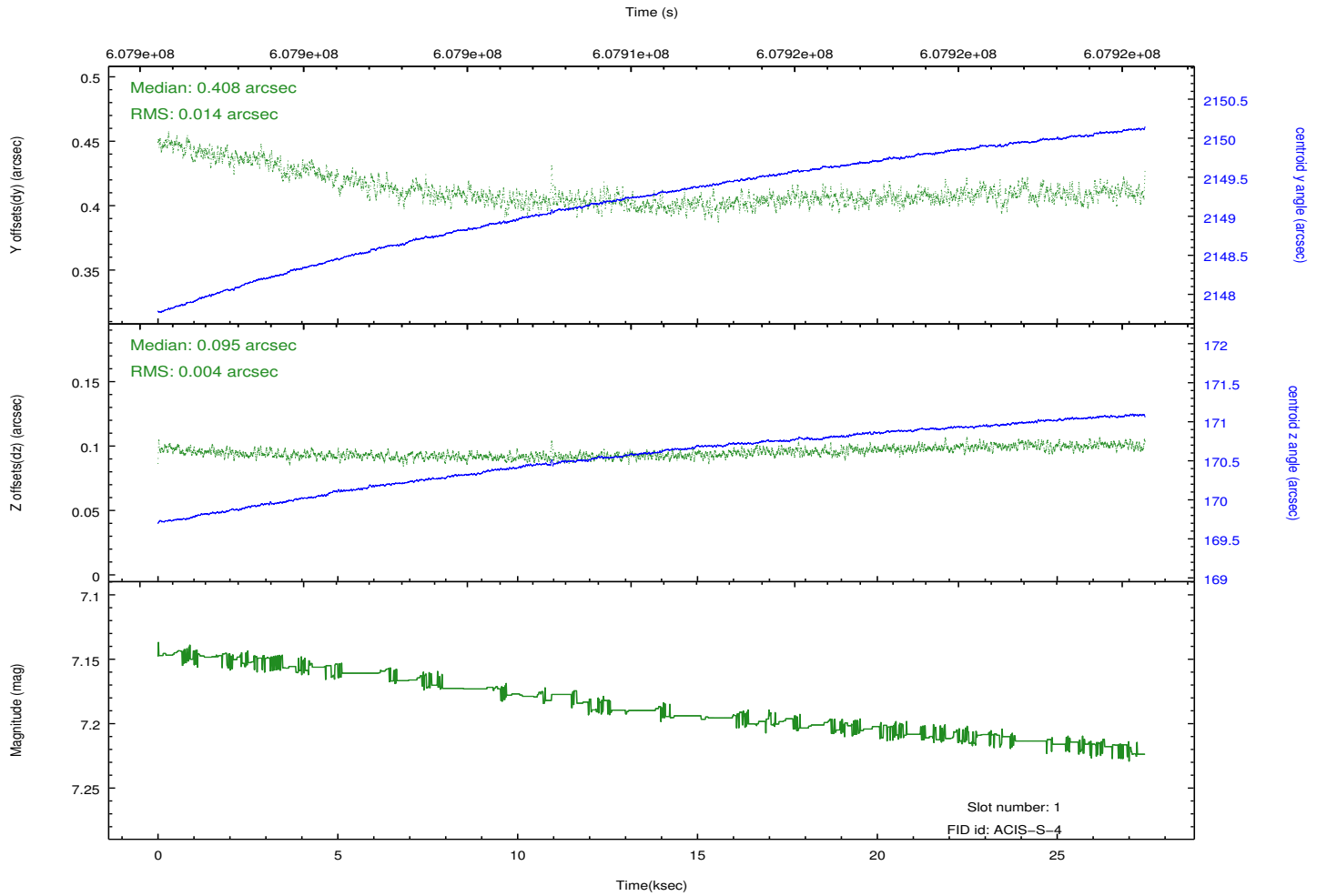
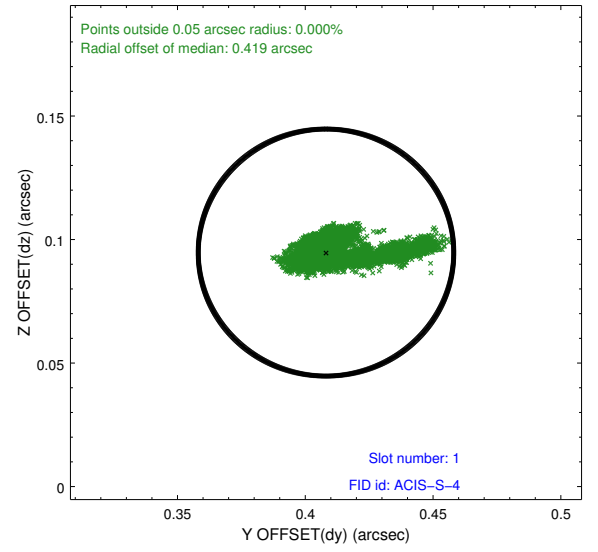
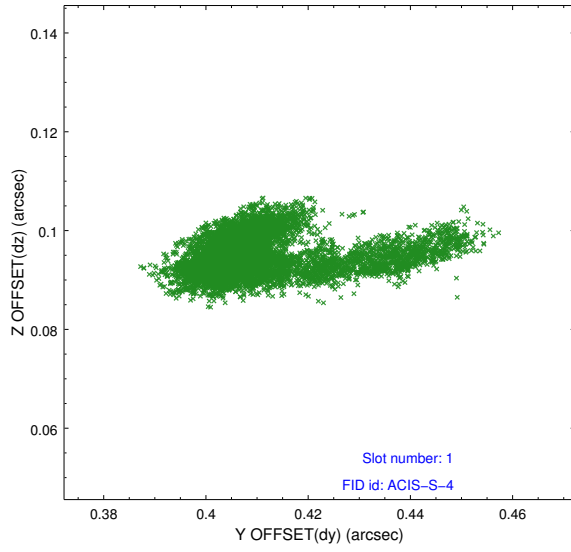


2.5 FID Slots

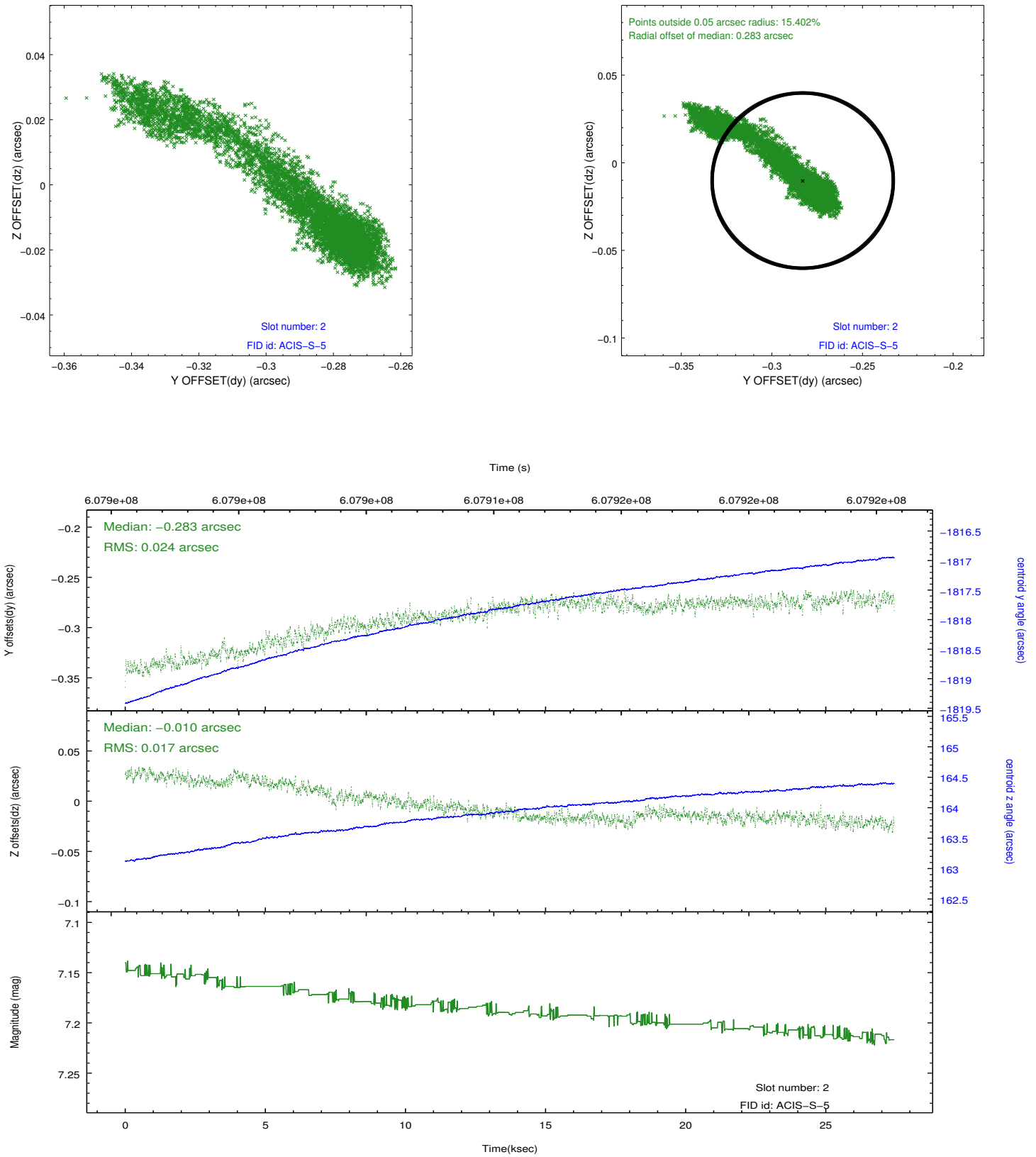
2.5.1 Slot 0



2.5.2 Slot 1



2.5.3 Slot 2



A Summary

A.1 Status

V&V Scientist	Beth Sundheim
V&V Date (YYYY-MM-DD)	2017.04.07
V&V Edition	1
V&V Disposition and Status	OK
V&V Charge Time	27.087800208449

A.2 Comments

Two optional chips were dropped.