

V&V Reference Report

L2 ASCDS Version : 10.5

Observation 18876 - L2 Version 1
Chandra X-Ray Center

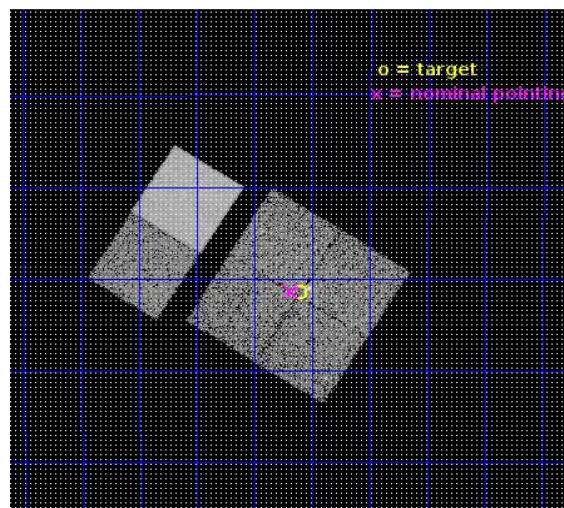
L2 Processing Date : Jun 28 2016

Contents

1	Front	2
2	OBI	3
2.1	OBI	3
2.1.1	Images	3
2.1.2	Bias	3
2.1.3	Parameters	4
2.1.4	Events	4
2.2	Compared Parameters	5
2.3	Aspect	6
2.4	Star Slots	9
2.4.1	Slot 3	9
2.4.2	Slot 4	10
2.4.3	Slot 5	11
2.4.4	Slot 6	12
2.4.5	Slot 7	13
2.5	FID Slots	14
2.5.1	Slot 0	14
2.5.2	Slot 1	15
2.5.3	Slot 2	16
A	Summary	17
A.1	Status	17
A.2	Comments	17

1 Front

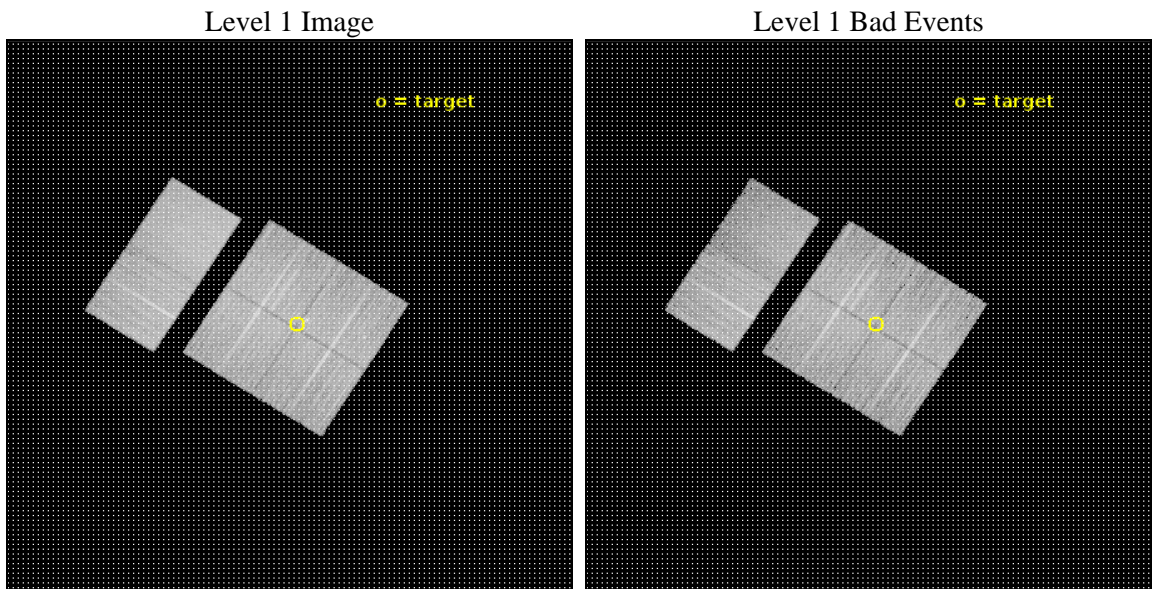
seq_num	901196	Sequence number
obs_id	18876	Observation id
title	From Dusty Filament to Starry Firmament: The Transfiguration of NGC 6334	Proposal title
observer	Leisa Townsley	Principal investigator
object	GM 24	Source name
dtcycle	0	
cycle	P	events from which exps? Prim/Second/Both
ra_targ	259.27875	Observer's specified target RA [deg]
dec_targ	-36.357556	Observer's specified target Dec [deg]
ra_nom	259.29520526521	Nominal RA [deg]
dec_nom	-36.356699761632	Nominal Dec [deg]
roll_nom	302.21845670043	Nominal Roll [deg]
revision	1	Processing version of data
ontime	16959.749850392	Sum of GTIs [s]
livetime	16744.995285851	Livetime [s]
ontime0	16959.708810449	Sum of GTIs [s]
ontime1	16959.749850392	Sum of GTIs [s]
ontime2	16959.790890455	Sum of GTIs [s]
ontime3	16959.831930399	Sum of GTIs [s]
ontime6	16959.914010406	Sum of GTIs [s]
ontime7	16959.872970462	Sum of GTIs [s]
l2events	99685	Number of level 2 events



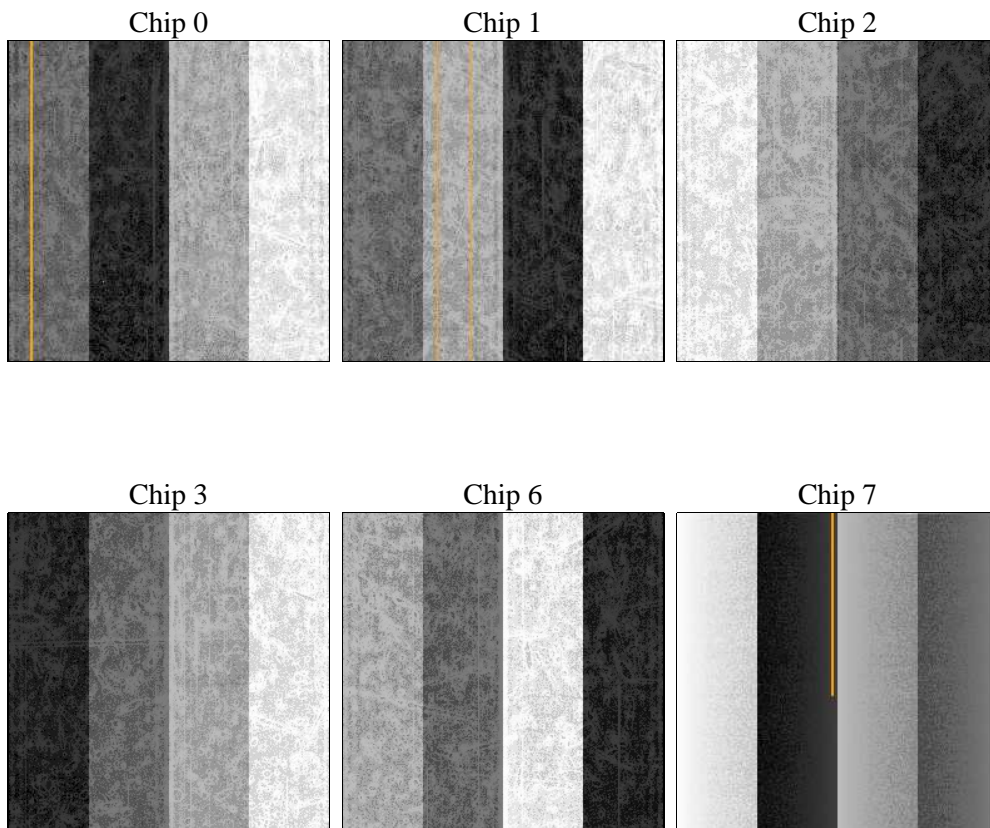
2 OBI

2.1 OBI

2.1.1 Images



2.1.2 Bias



2.1.3 Parameters

obi_num	1	Obi number	sched_exp_time	17000.000000	[s] Scheduled observation exposure time
ascdsver	10.5	Processing system revision	ontime	16959.749850392	Sum of GTIs [s]
caldsver	4.7.2	 	ontime0	16959.708810449	Sum of GTIs [s]
date	2016-06-28T05:16:57	Date and time of file creation	ontime1	16959.749850392	Sum of GTIs [s]
revision	1	Processing version of data	ontime2	16959.790890455	Sum of GTIs [s]
			ontime3	16959.831930399	Sum of GTIs [s]
			ontime6	16959.914010406	Sum of GTIs [s]
			ontime7	16959.872970462	Sum of GTIs [s]
			l1events	585667	Number of level 1 events

2.1.4 Events

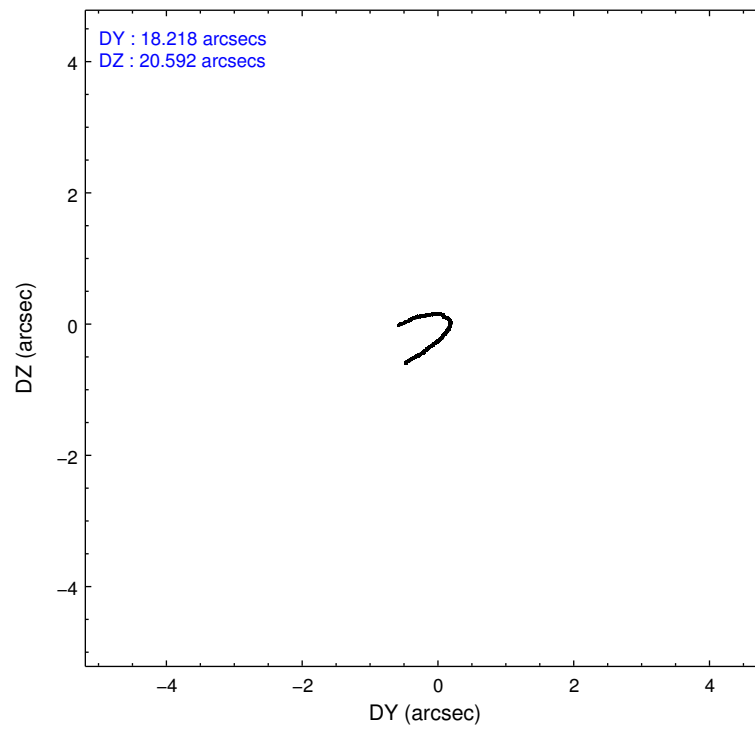
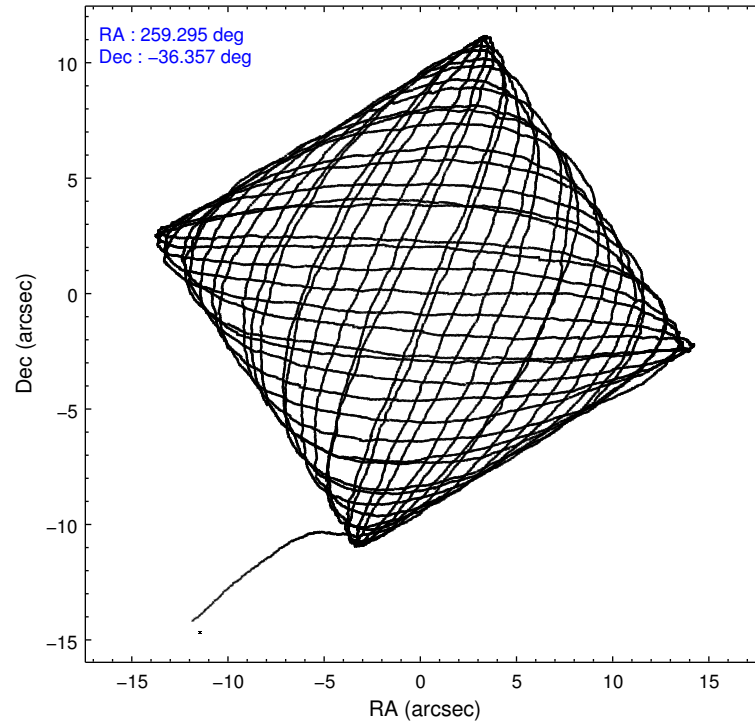
	ccd 0	ccd 1	ccd 2	ccd 3	ccd 6	ccd 7		ccd 0	ccd 1	ccd 2	ccd 3	ccd 6	ccd 7
level 1 events	87365	92485	96448	97117	101299	110953	grade 0 events	4196	5234	4071	4455	4257	5099
rejected events	76124	79291	85669	85946	89701	58455		4%	5%	4%	4%	4%	4%
rejected %	87%	85%	88%	88%	88%	52%	grade 1 events	43	49	61	60	61	180
								0%	0%	0%	0%	0%	0%
							grade 2 events	2879	2941	2560	2439	2664	11509
								3%	3%	2%	2%	2%	10%
							grade 3 events	1087	1270	1012	1103	1092	4604
								1%	1%	1%	1%	1%	4%
							grade 4 events	1051	1187	1105	1058	1146	4497
								1%	1%	1%	1%	1%	4%
							grade 5 events	3536	3875	3274	4081	4240	11642
								4%	4%	3%	4%	4%	10%
							grade 6 events	2030	2566	2036	2117	2442	26798
								2%	2%	2%	2%	2%	24%
							grade 7 events	72543	75363	82329	81804	85397	46624
								83%	81%	85%	84%	84%	42%

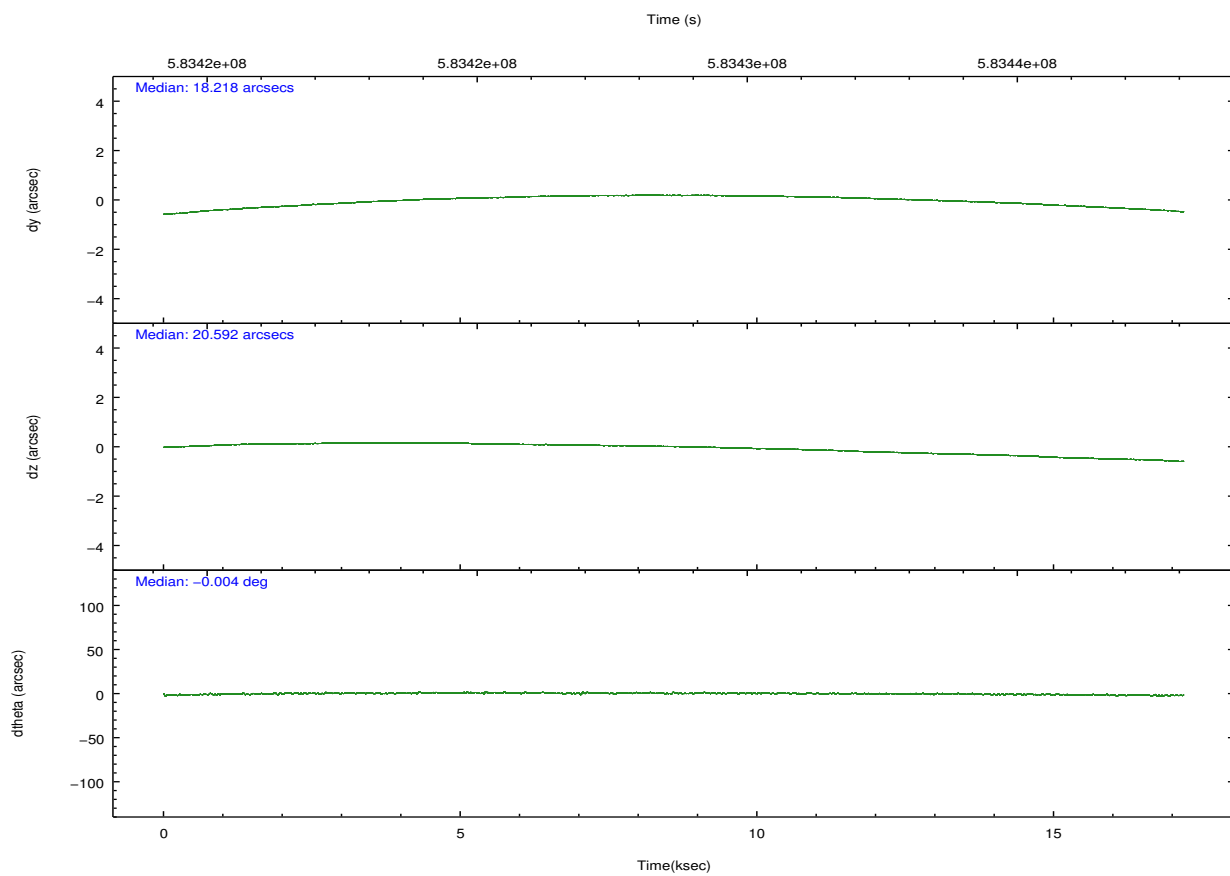
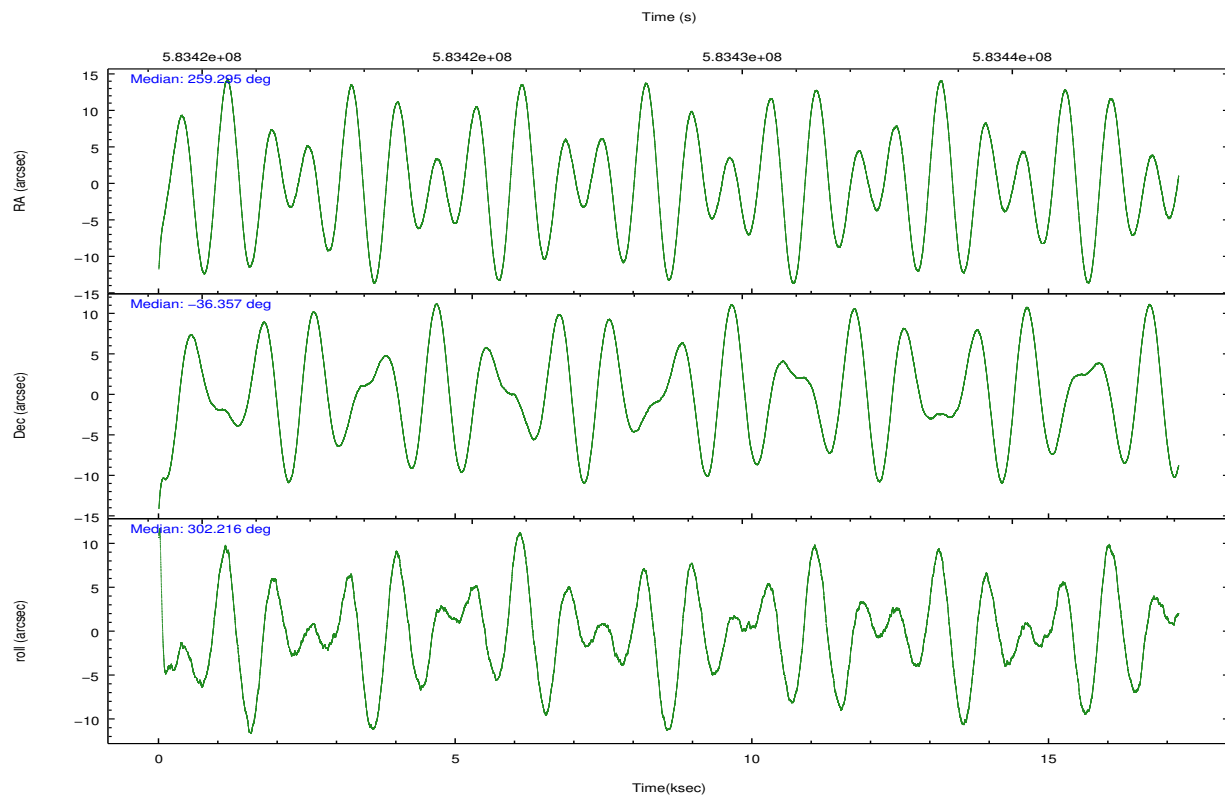
2.2 Compared Parameters

Parameter	Planned	Actual
Instrument	ACIS	ACIS
Detector	ACIS-012367	ACIS-012367
Grating	NONE	NONE
Data mode	VFAINT	VFAINT
Observation mode	POINTING	POINTING
[deg] Pointing RA	259.264836	259.2952052652075
[deg] Pointing Dec	-36.343895	-36.35669976163241
[deg] Pointing Roll	301.991754	302.218456700428
[mm] SIM focus pos	-0.782348	-0.7809083437167272
[mm] SIM defocus	0	0.001439871863259334
[mm] SIM translation stage pos	-233.592463	-233.5874344608287
[mm] SIM translation stage offset	0	-0.005018542100998502
[s] Observation start time (MET)	583420225.184000	583419137.9805501
Observation start date	2016-06-27T13:09:17	2016-06-27T12:52:17
[s] Observation end time (MET)	583437225.184000	583437630.51911
Observation end date	2016-06-27T17:52:37	2016-06-27T18:00:30
Read mode	TIMED	TIMED

Parameter	Planned	Actual
Obspar format version number	7	7
Obspar file type	PREDICTED	ACTUAL
Obspar update status	NONE	UPDATED
CCD I0 on	Y	Y
CCD I1 on	Y	Y
CCD I2 on	Y	Y
CCD I3 on	Y	Y
CCD S0 on	N	N
CCD S1 on	N	N
CCD S2 on	O1	Y
CCD S3 on	O2	Y
CCD S4 on	N	N
CCD S5 on	N	N
Number of optional ACIS chips dropped	0	0
On-chip summing requested	N	N
Subarray requested	NONE	NONE
Alternating exposures requested	N	N
[s] Primary exposure time	0.000000	3.2

2.3 Aspect



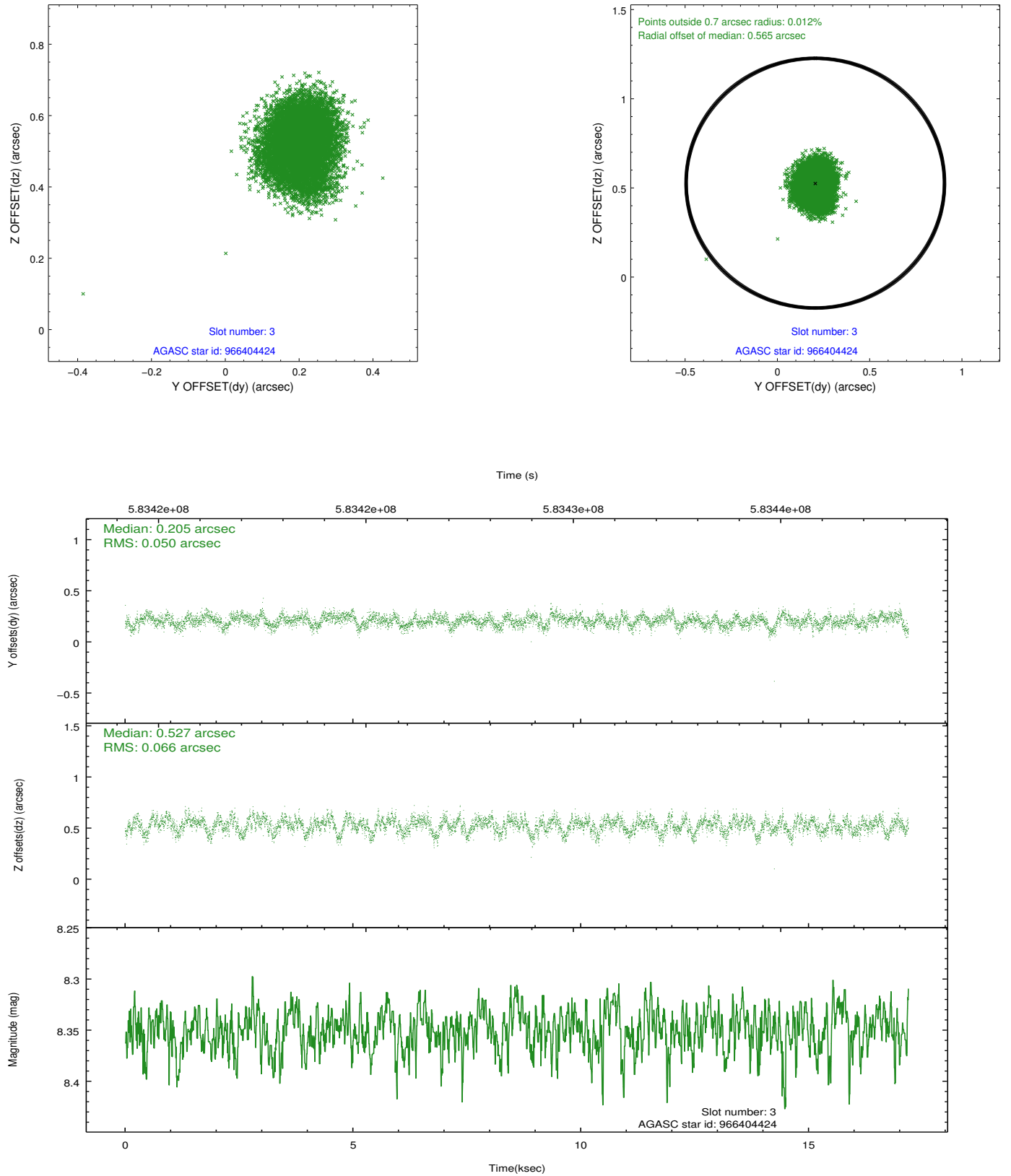


Slot Statistics

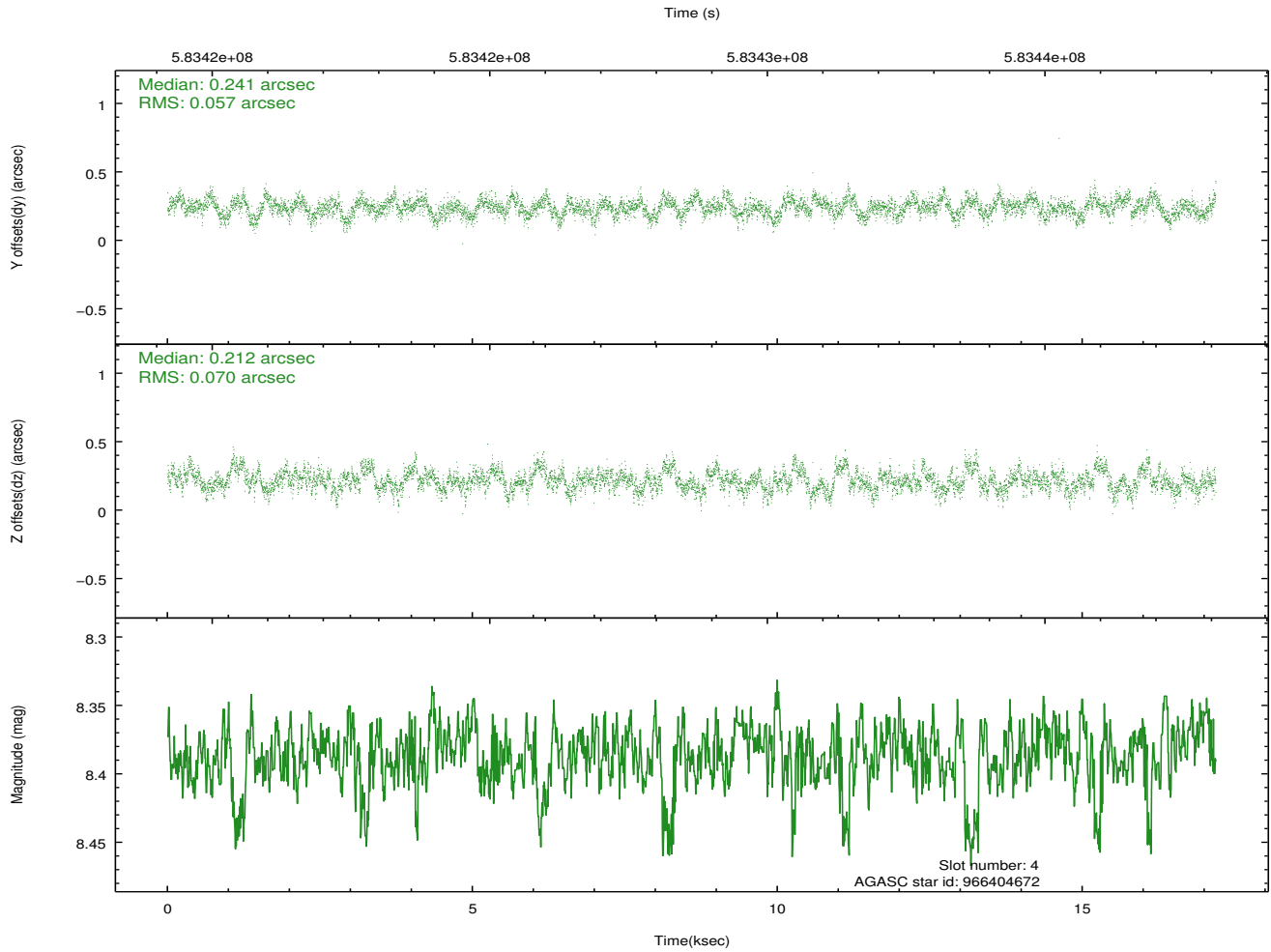
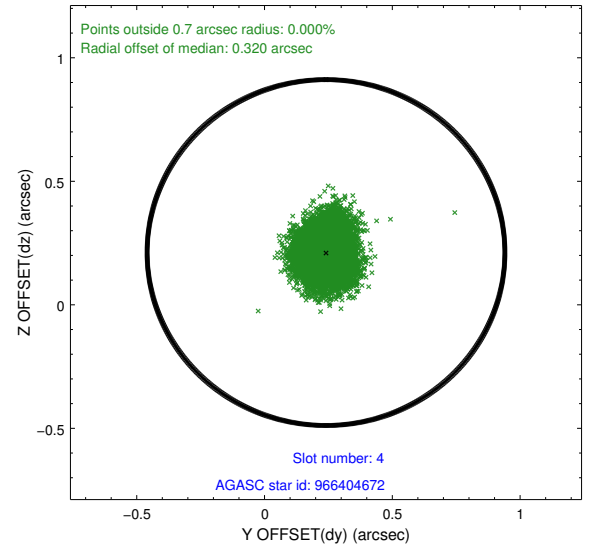
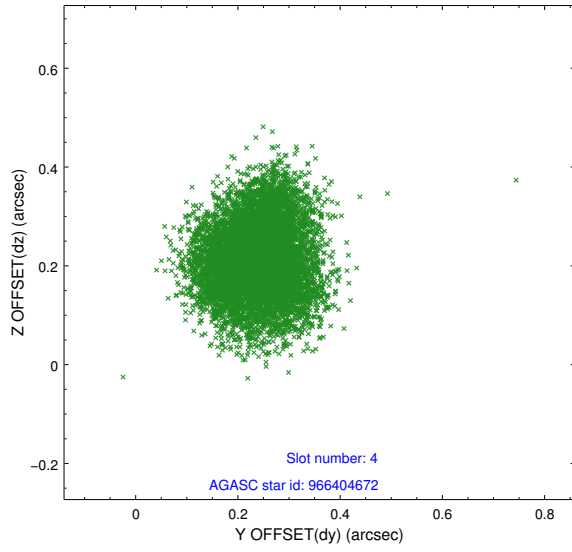
slot	status	used	id	mag	n_pts	med_dy	med_dz	dr1	dr2	ra	dec	mean_y	mean_z
0	FID		ACIS-I-1	7.25	4192	0.083	-0.080	0.010	0.022	0.000000	0.000000	921.32	-844.30
1	FID		ACIS-I-5	7.24	4192	-0.371	0.030	0.009	0.014	0.000000	0.000000	-1827.17	1053.08
2	FID		ACIS-I-6	7.26	4192	0.196	0.120	0.012	0.019	0.000000	0.000000	386.62	1698.03
3	GUIDE	used	966404424	8.35	8382	0.205	0.527	0.089	0.143	258.466186	-36.072439	-2051.49	-1457.60
4	GUIDE	used	966404672	8.39	8380	0.241	0.212	0.097	0.156	258.732174	-36.454154	-476.28	-1520.46
5	GUIDE	used	966003568	7.98	8384	-0.255	-0.056	0.099	0.164	259.362539	-35.536668	-2313.22	1782.30
6	GUIDE	used	966002288	8.84	8381	-0.129	-0.277	0.117	0.188	259.614800	-35.563330	-1839.17	2357.22
7	GUIDE	used	966530176	8.77	8379	-0.056	-0.403	0.082	0.135	260.167913	-36.682742	2426.06	1558.86

2.4 Star Slots

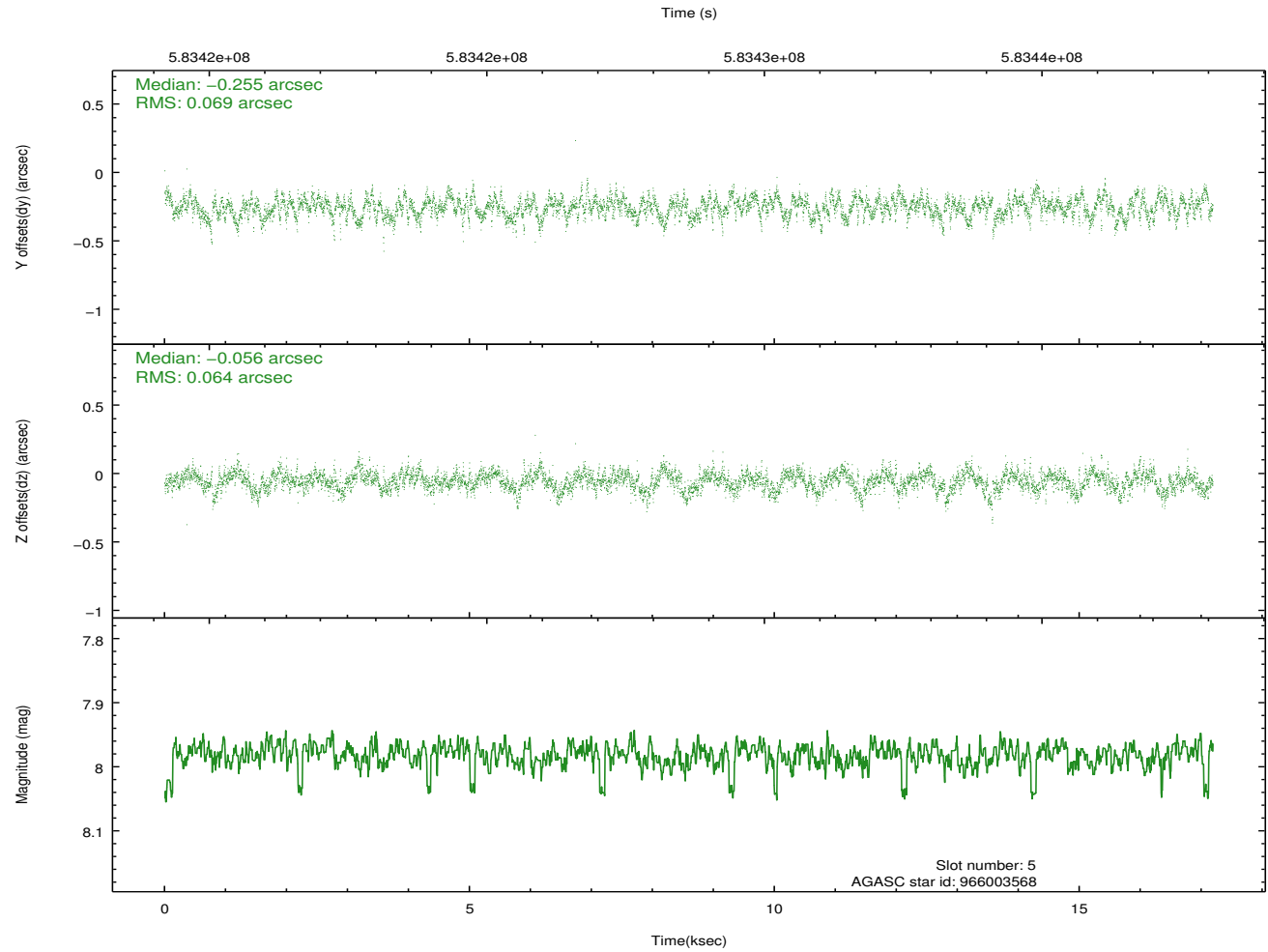
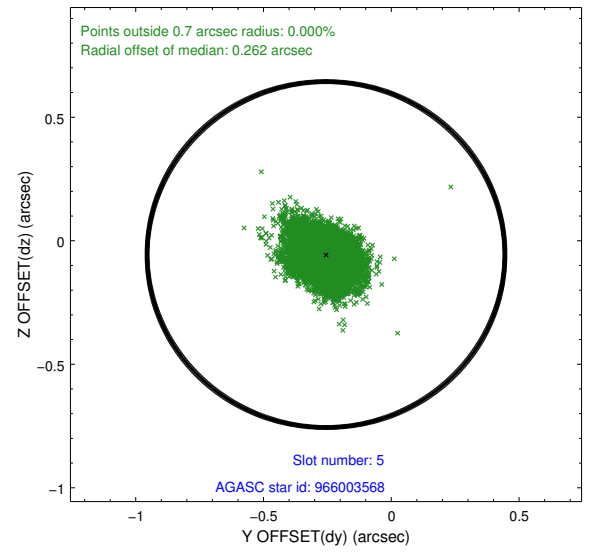
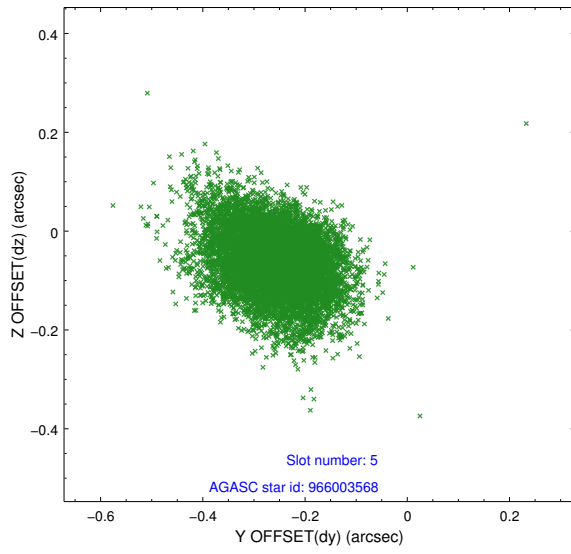
2.4.1 Slot 3



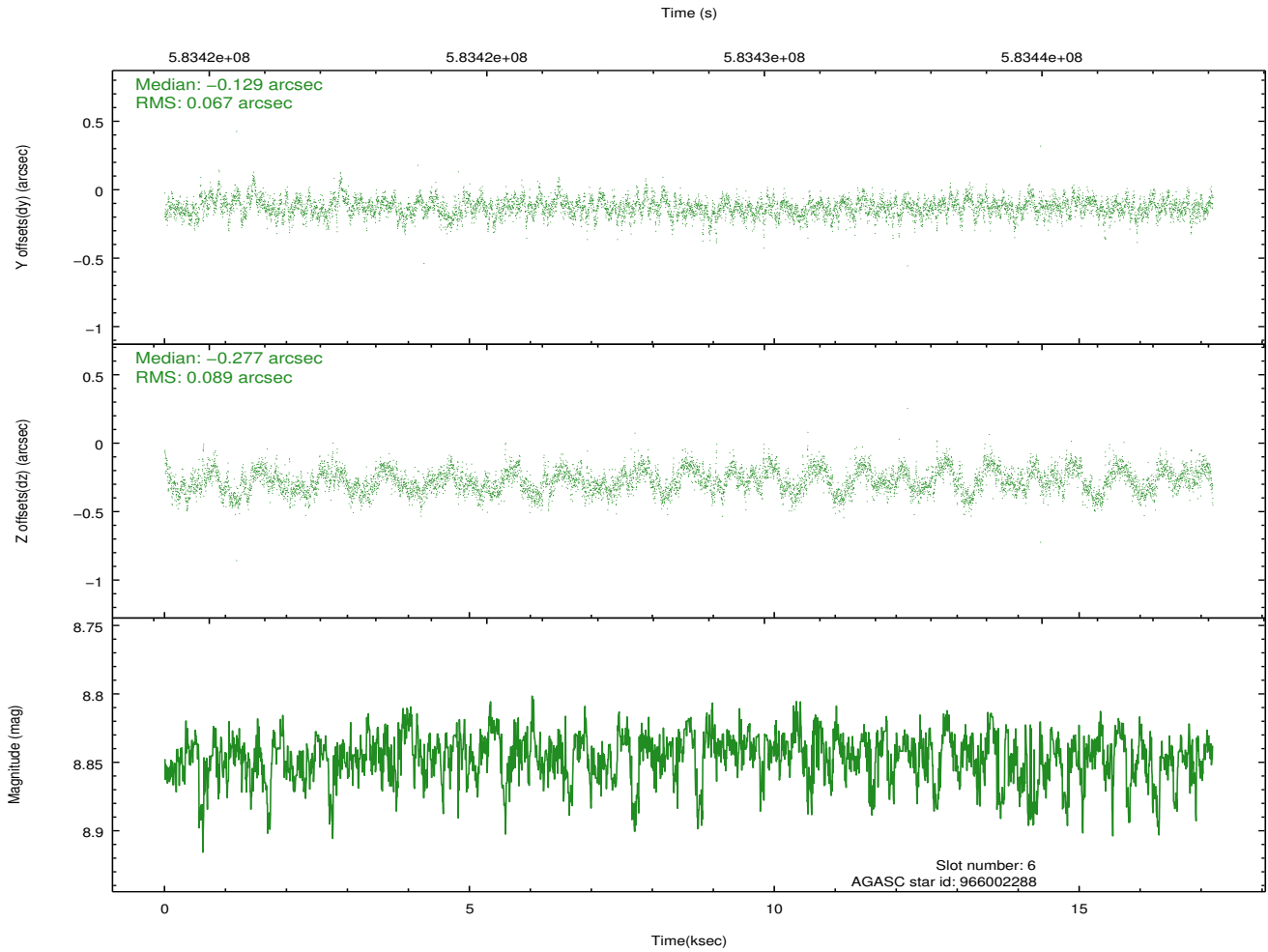
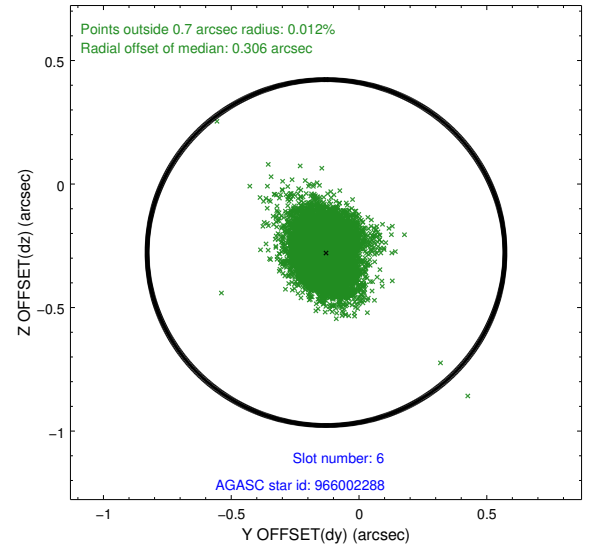
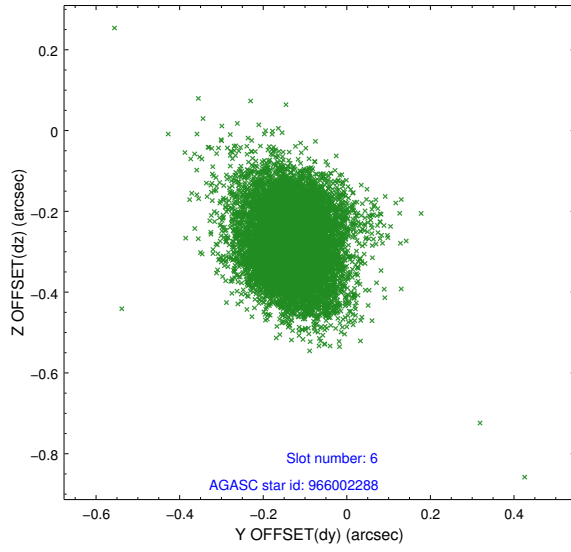
2.4.2 Slot 4



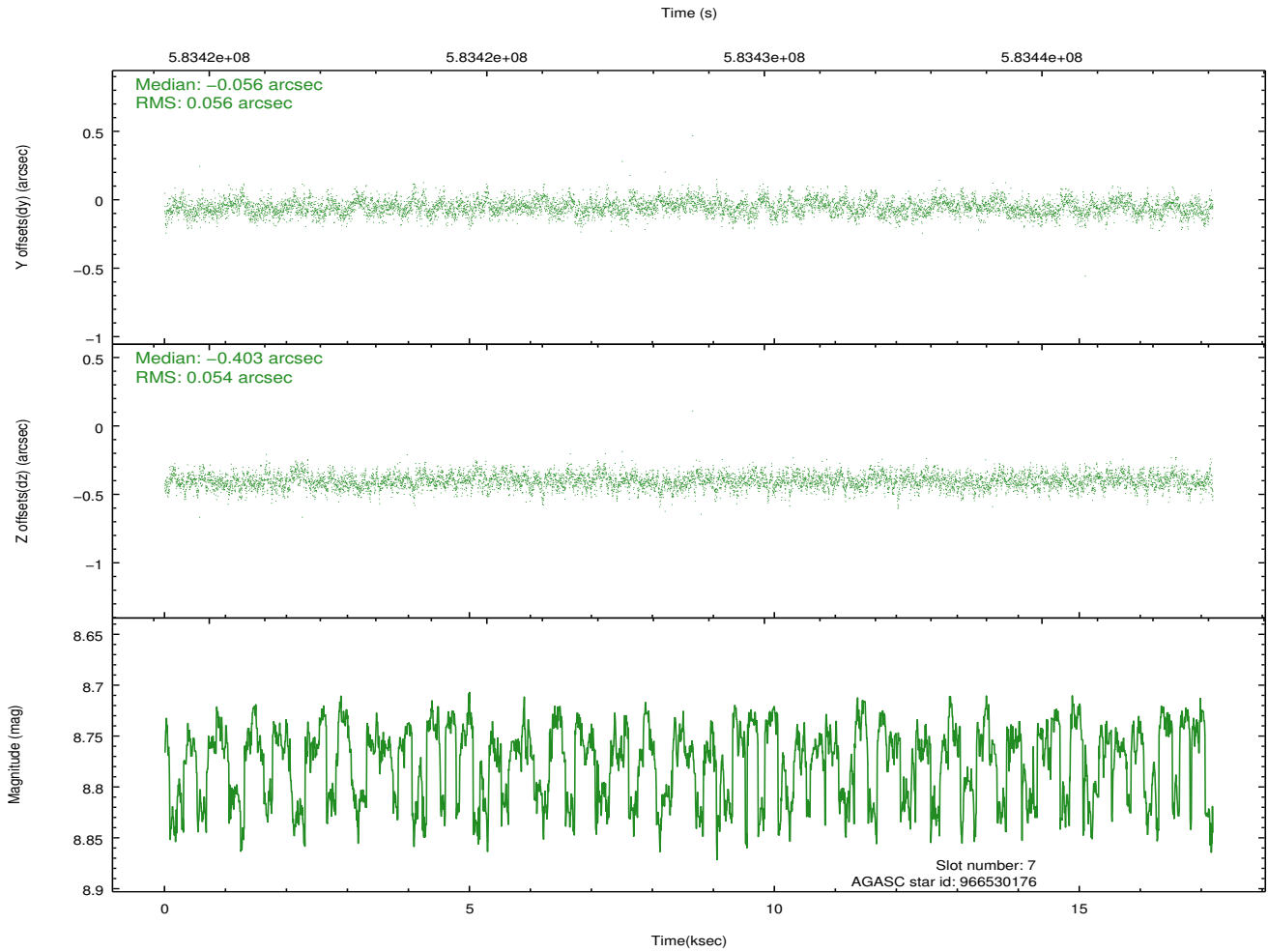
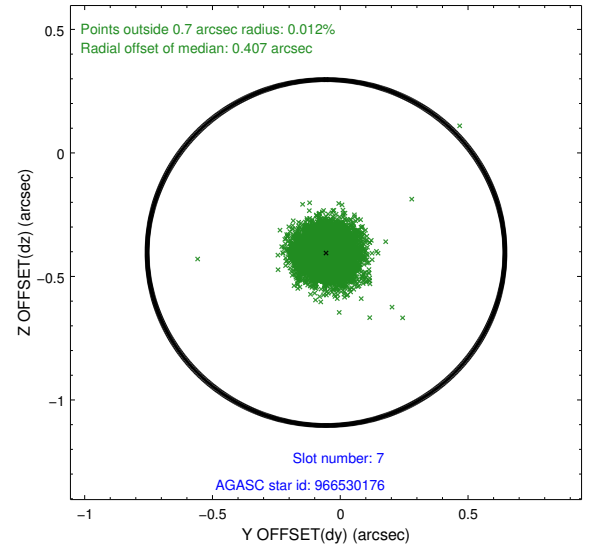
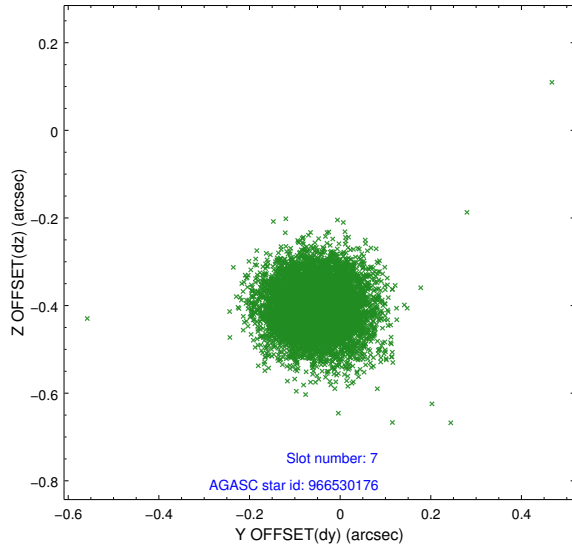
2.4.3 Slot 5



2.4.4 Slot 6

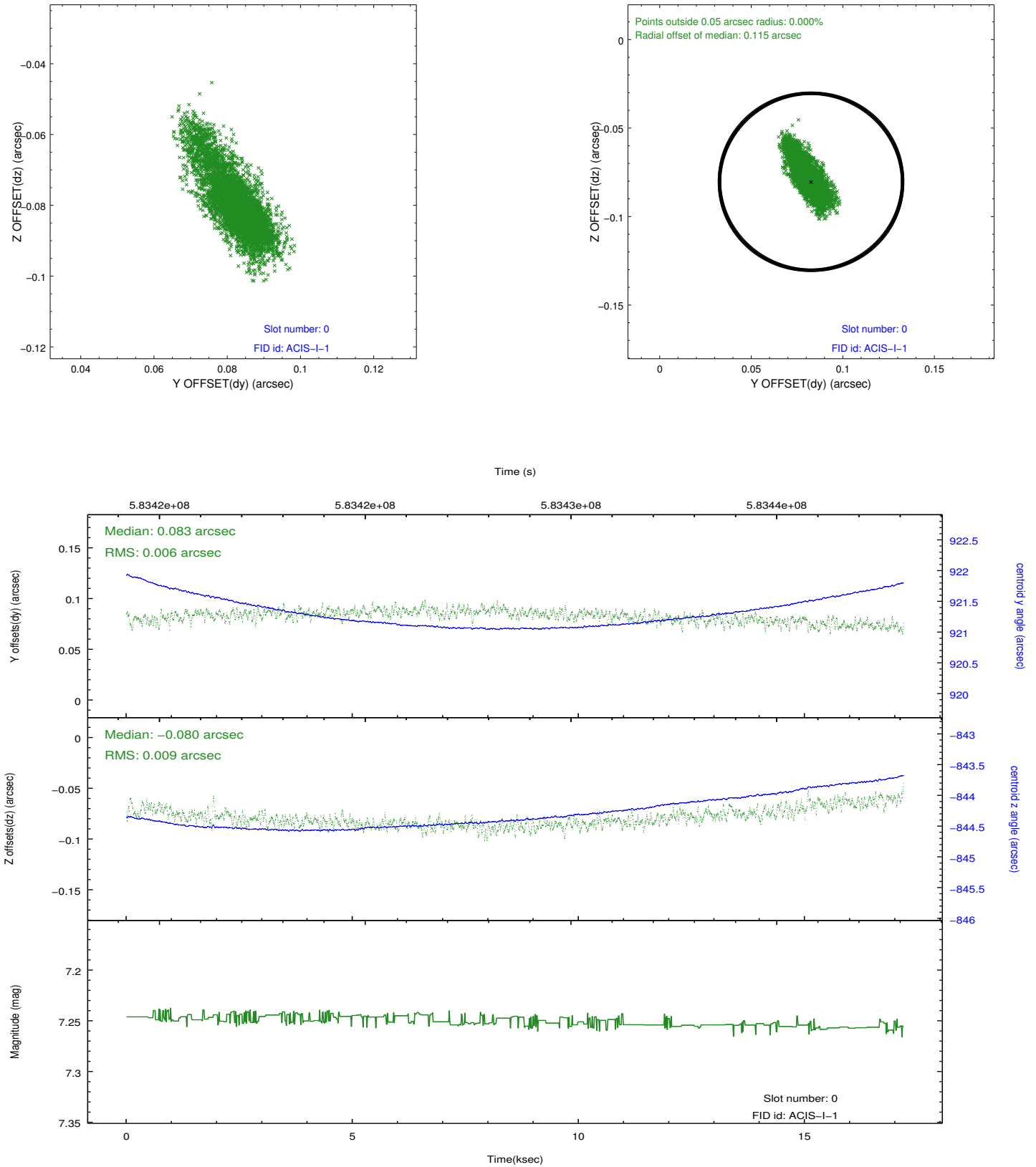


2.4.5 Slot 7

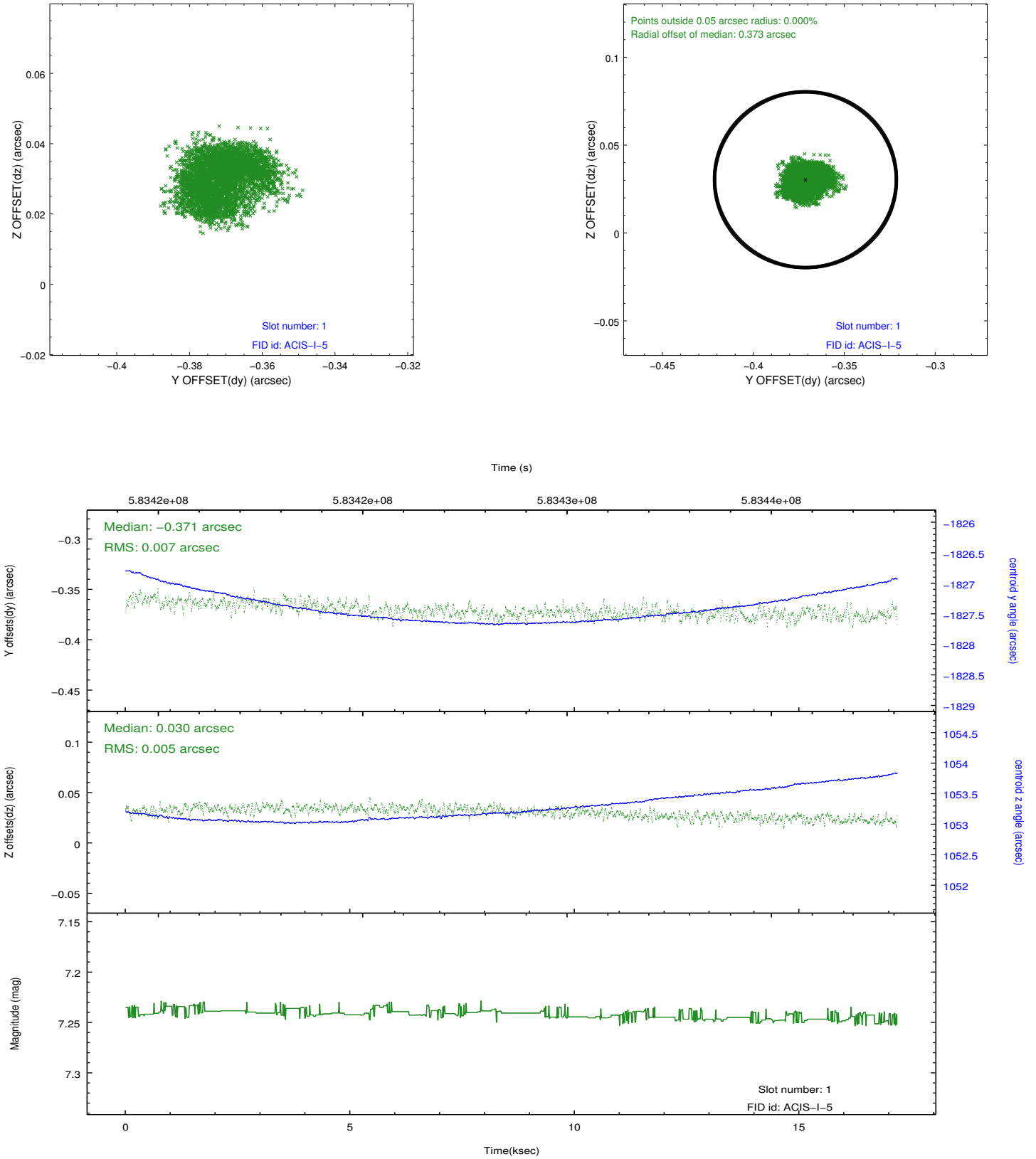


2.5 FID Slots

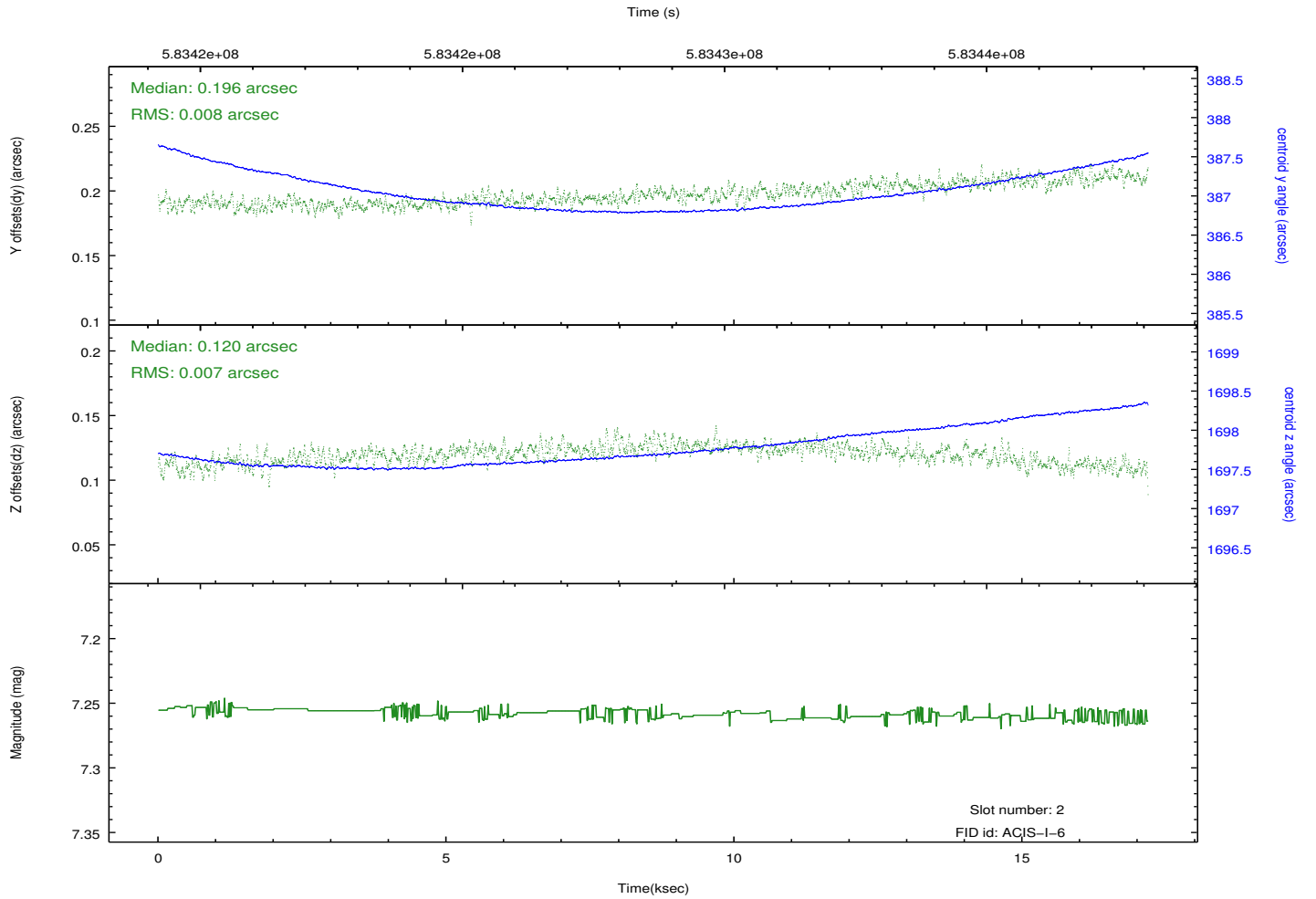
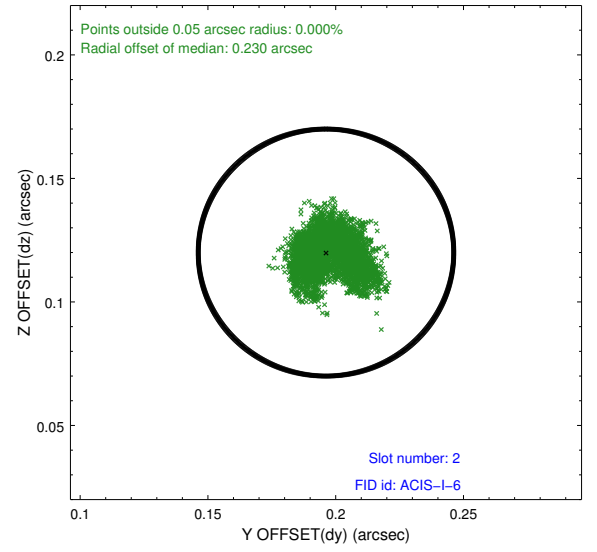
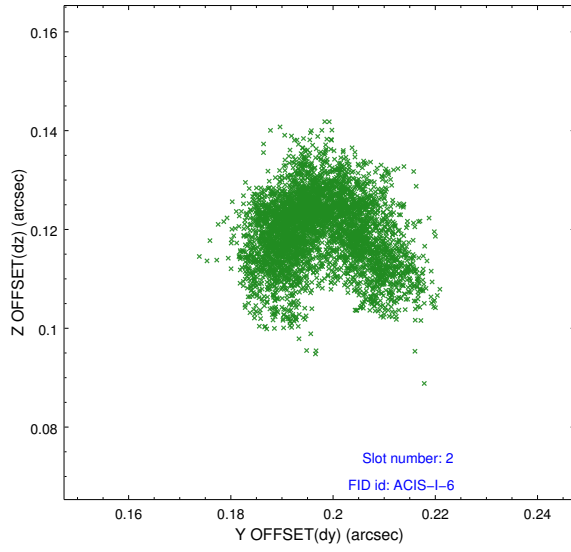
2.5.1 Slot 0



2.5.2 Slot 1



2.5.3 Slot 2



A Summary

A.1 Status

V&V Scientist	Joy Nichols
V&V Date (YYYY-MM-DD)	2016.06.28
V&V Edition	1
V&V Disposition and Status	OK
V&V Charge Time	16.959749850392

A.2 Comments