

V&V Reference Report

L2 ASCDS Version : 10.5

Observation 18082 - L2 Version 1
Chandra X-Ray Center

L2 Processing Date : Jul 1 2016

Contents

1	Front	2
2	OBI	3
2.1	OBI	3
2.1.1	Images	3
2.1.2	Bias	3
2.1.3	Parameters	4
2.1.4	Events	4
2.2	Compared Parameters	5
2.3	Aspect	6
2.4	Star Slots	9
2.4.1	Slot 3	9
2.4.2	Slot 4	10
2.4.3	Slot 5	11
2.4.4	Slot 6	12
2.4.5	Slot 7	13
2.5	FID Slots	14
2.5.1	Slot 0	14
2.5.2	Slot 1	15
2.5.3	Slot 2	16
A	Summary	17
A.1	Status	17
A.2	Comments	17

1 Front

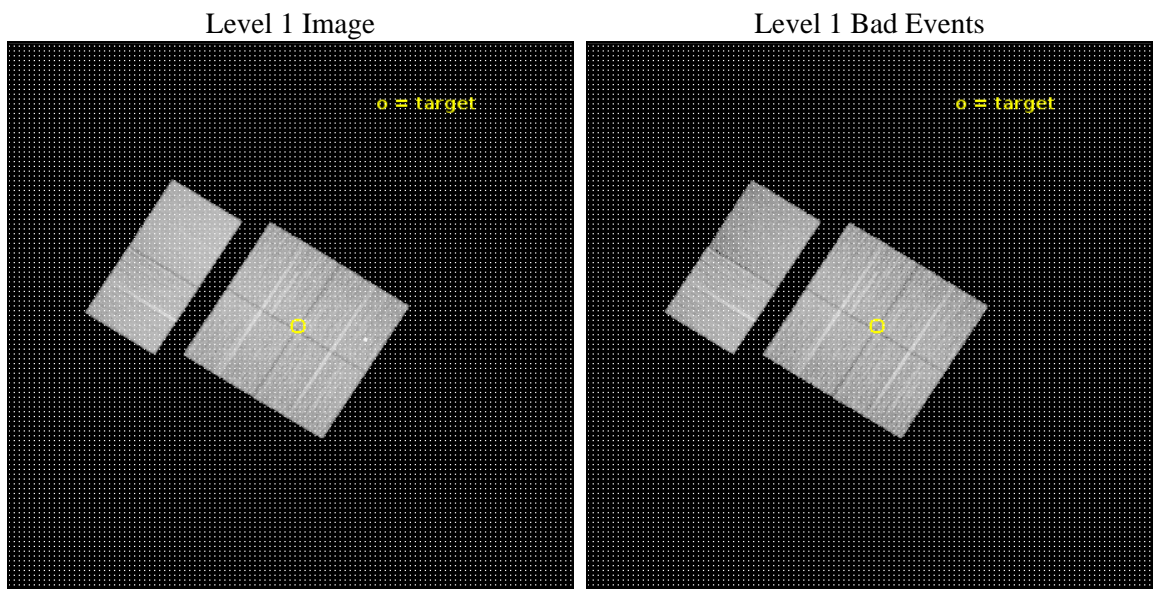
seq_num	901196	Sequence number
obs_id	18082	Observation id
title	From Dusty Filament to Starry Firmament: The Transfiguration of NGC 6334	Proposal title
observer	Leisa Townsley	Principal investigator
object	GM 24	Source name
dtcycle	0	
cycle	P	events from which exps? Prim/Second/Both
ra_targ	259.27875	Observer's specified target RA [deg]
dec_targ	-36.357556	Observer's specified target Dec [deg]
ra_nom	259.29520554638	Nominal RA [deg]
dec_nom	-36.356663720204	Nominal Dec [deg]
roll_nom	302.21845182789	Nominal Roll [deg]
revision	1	Processing version of data
ontime	22949.439072371	Sum of GTIs [s]
livetime	22658.839456343	Livetime [s]
ontime0	22952.639062881	Sum of GTIs [s]
ontime1	22949.439072371	Sum of GTIs [s]
ontime2	22949.480072618	Sum of GTIs [s]
ontime3	22949.521152616	Sum of GTIs [s]
ontime6	22952.844262838	Sum of GTIs [s]
ontime7	22952.803222895	Sum of GTIs [s]
l2events	139736	Number of level 2 events



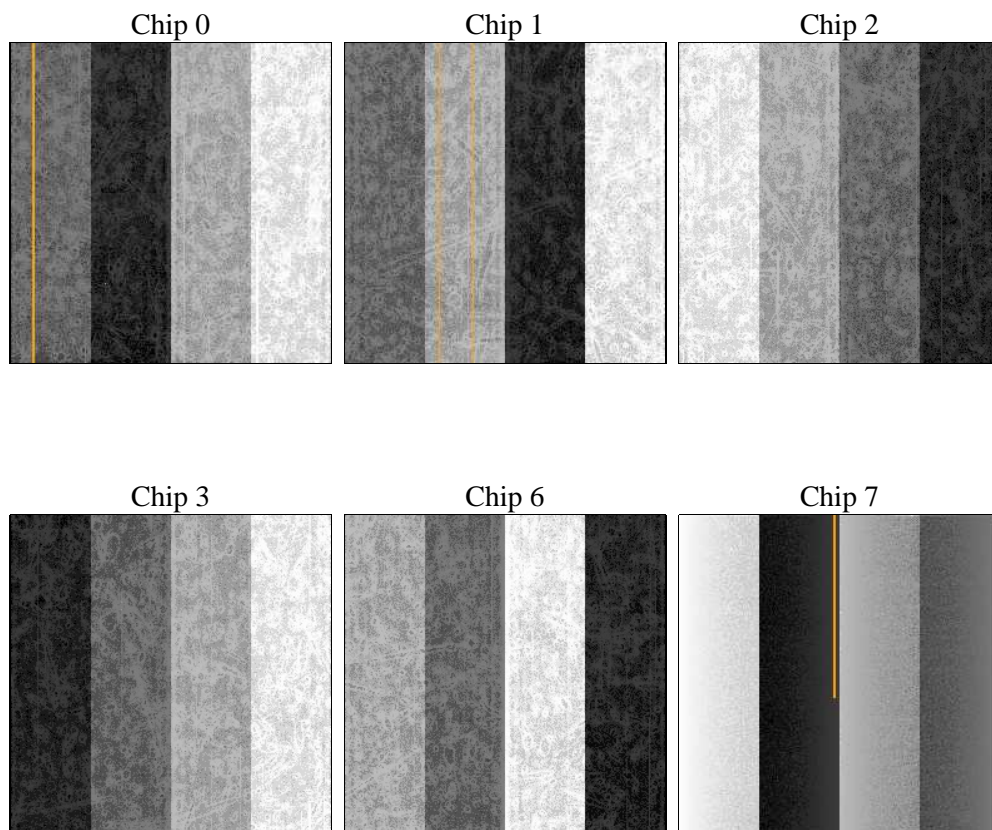
2 OBI

2.1 OBI

2.1.1 Images



2.1.2 Bias



2.1.3 Parameters

obi_num	1	Obi number	sched_exp_time	23000.000000	[s] Scheduled observation exposure time
ascdsver	10.5	Processing system revision	ontime	22949.439072371	Sum of GTIs [s]
caldsver	4.7.2	 	ontime0	22952.639062881	Sum of GTIs [s]
date	2016-07-01T11:57:35	Date and time of file creation	ontime1	22949.439072371	Sum of GTIs [s]
revision	1	Processing version of data	ontime2	22949.480072618	Sum of GTIs [s]
			ontime3	22949.521152616	Sum of GTIs [s]
			ontime6	22952.844262838	Sum of GTIs [s]
			ontime7	22952.803222895	Sum of GTIs [s]
			l1events	821467	Number of level 1 events

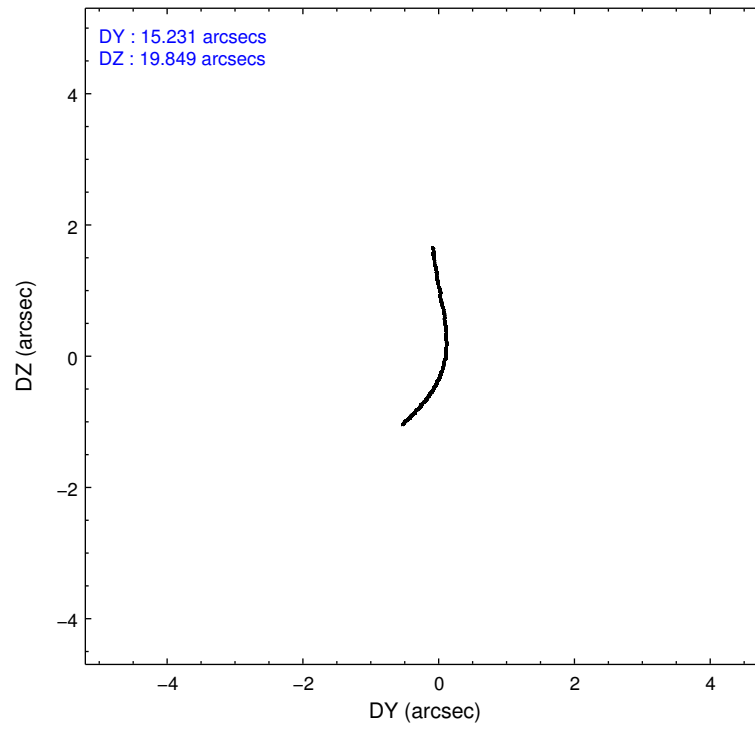
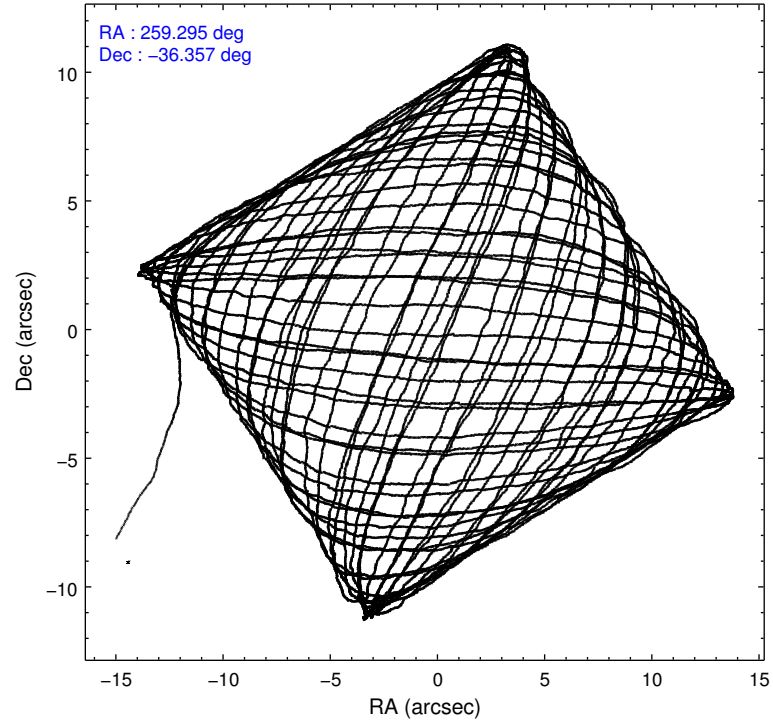
2.1.4 Events

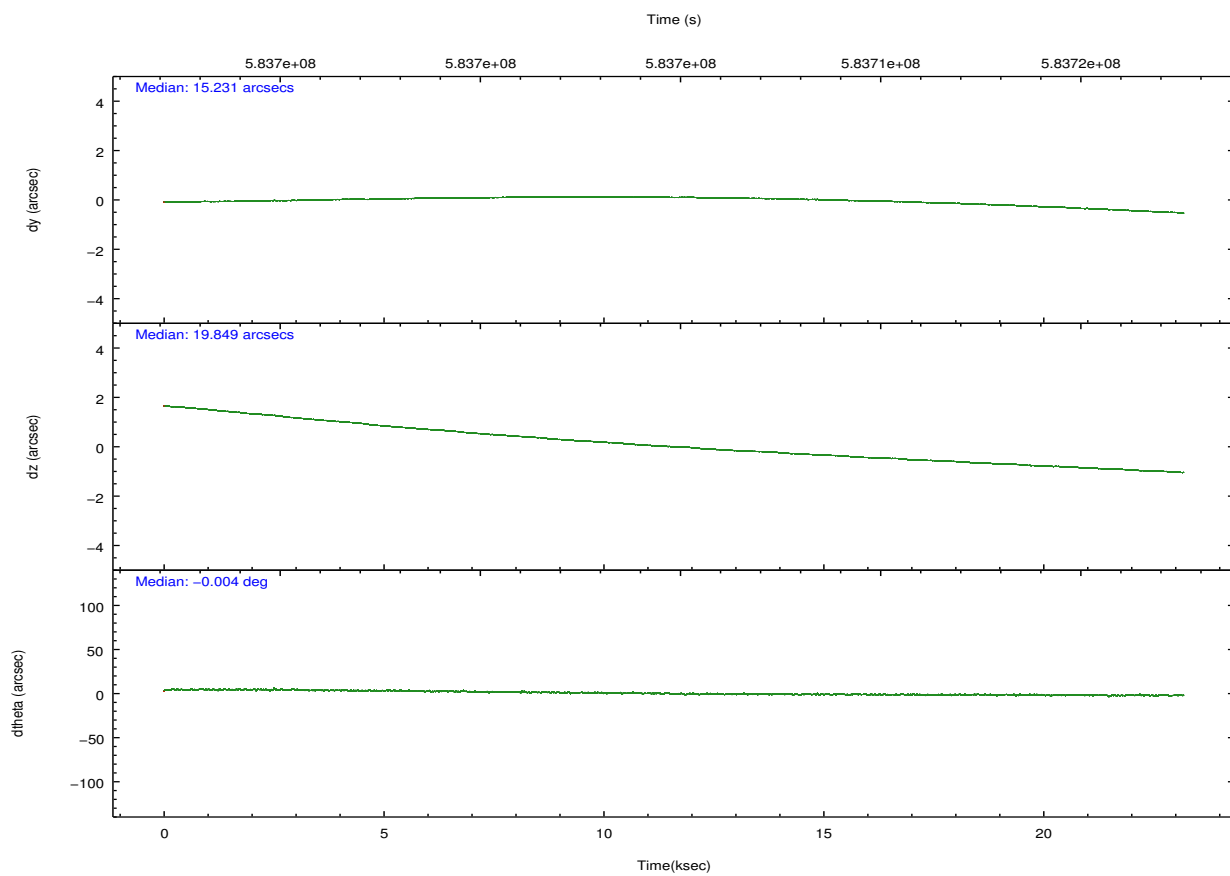
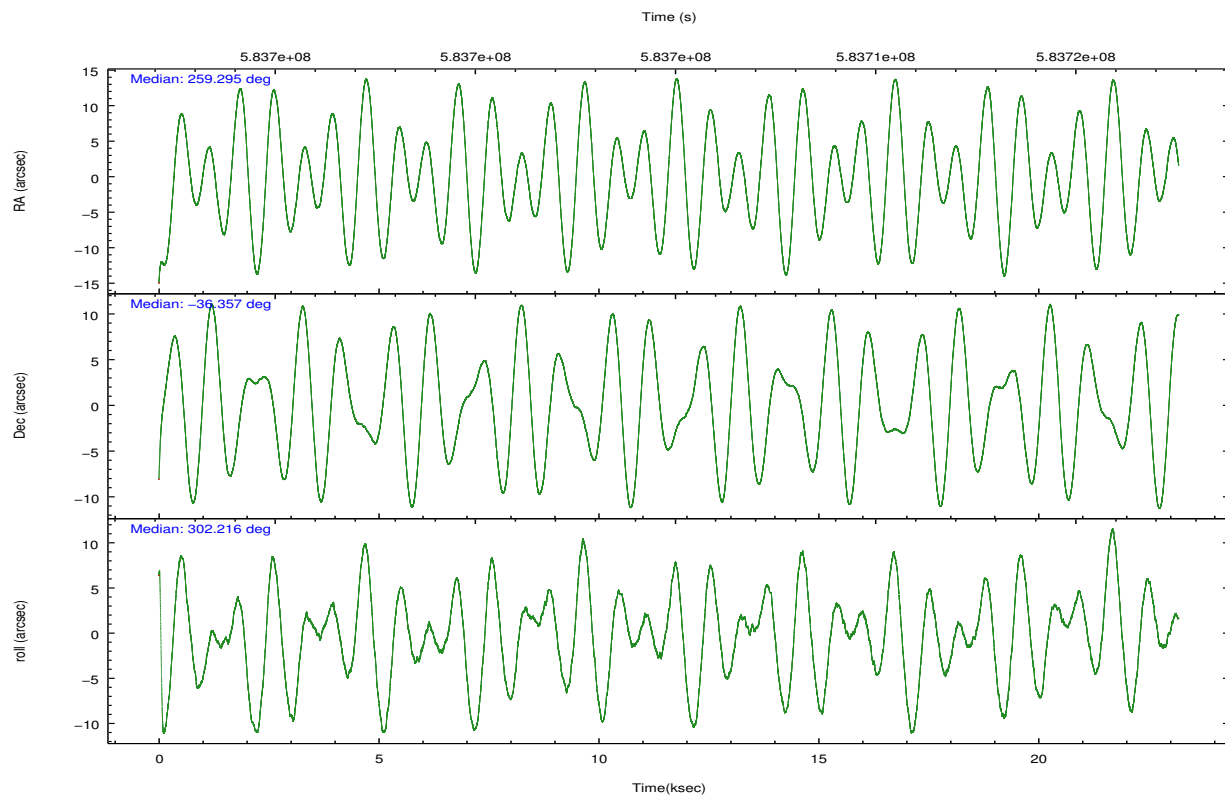
	ccd 0	ccd 1	ccd 2	ccd 3	ccd 6	ccd 7		ccd 0	ccd 1	ccd 2	ccd 3	ccd 6	ccd 7
level 1 events	122092	129661	133656	136857	143619	155582	grade 0 events	5714	9381	5778	7052	5876	6810
rejected events	106544	109529	118468	120303	127349	82298		4%	7%	4%	5%	4%	4%
rejected %	87%	84%	88%	87%	88%	52%	grade 1 events	78	88	87	92	72	273
								0%	0%	0%	0%	0%	0%
							grade 2 events	3827	3956	3731	3403	3762	16214
								3%	3%	2%	2%	2%	10%
							grade 3 events	1586	1691	1491	1542	1577	6088
								1%	1%	1%	1%	1%	3%
							grade 4 events	1500	1613	1479	1486	1629	5996
								1%	1%	1%	1%	1%	3%
							grade 5 events	4933	5386	4589	5752	5935	15987
								4%	4%	3%	4%	4%	10%
							grade 6 events	2921	3492	2709	3075	3429	38185
								2%	2%	2%	2%	2%	24%
							grade 7 events	101533	104054	113792	114455	121339	66029
								83%	80%	85%	83%	84%	42%

2.2 Compared Parameters

Parameter	Planned	Actual	Parameter	Planned	Actual
Instrument	ACIS	ACIS	Obspar format version number	7	7
Detector	ACIS-012367	ACIS-012367	Obspar file type	PREDICTED	ACTUAL
Grating	NONE	NONE	Obspar update status	NONE	UPDATED
Data mode	VFAINT	VFAINT	CCD I0 on	Y	Y
Observation mode	POINTING	POINTING	CCD I1 on	Y	Y
[deg] Pointing RA	259.264836	259.2952055463761	CCD I2 on	Y	Y
[deg] Pointing Dec	-36.343895	-36.35666372020421	CCD I3 on	Y	Y
[deg] Pointing Roll	301.991754	302.2184518278907	CCD S0 on	N	N
[mm] SIM focus pos	-0.782348	-0.7809083437167272	CCD S1 on	N	N
[mm] SIM defocus	0	0.001439871863259334	CCD S2 on	O1	Y
[mm] SIM translation stage pos	-233.592463	-233.5874344608287	CCD S3 on	O2	Y
[mm] SIM translation stage offset	0	-0.005018542100998502	CCD S4 on	N	N
[s] Observation start time (MET)	583693429.184000	583692349.18373	CCD S5 on	N	N
Observation start date	2016-06-30T17:02:41	2016-06-30T16:45:49	Number of optional ACIS chips dropped	0	0
[s] Observation end time (MET)	583716429.184000	583717267.96016	On-chip summing requested	N	N
Observation end date	2016-06-30T23:26:01	2016-06-30T23:41:07	Subarray requested	NONE	NONE
Read mode	TIMED	TIMED	Alternating exposures requested	N	N
			[s] Primary exposure time	0.000000	3.2

2.3 Aspect



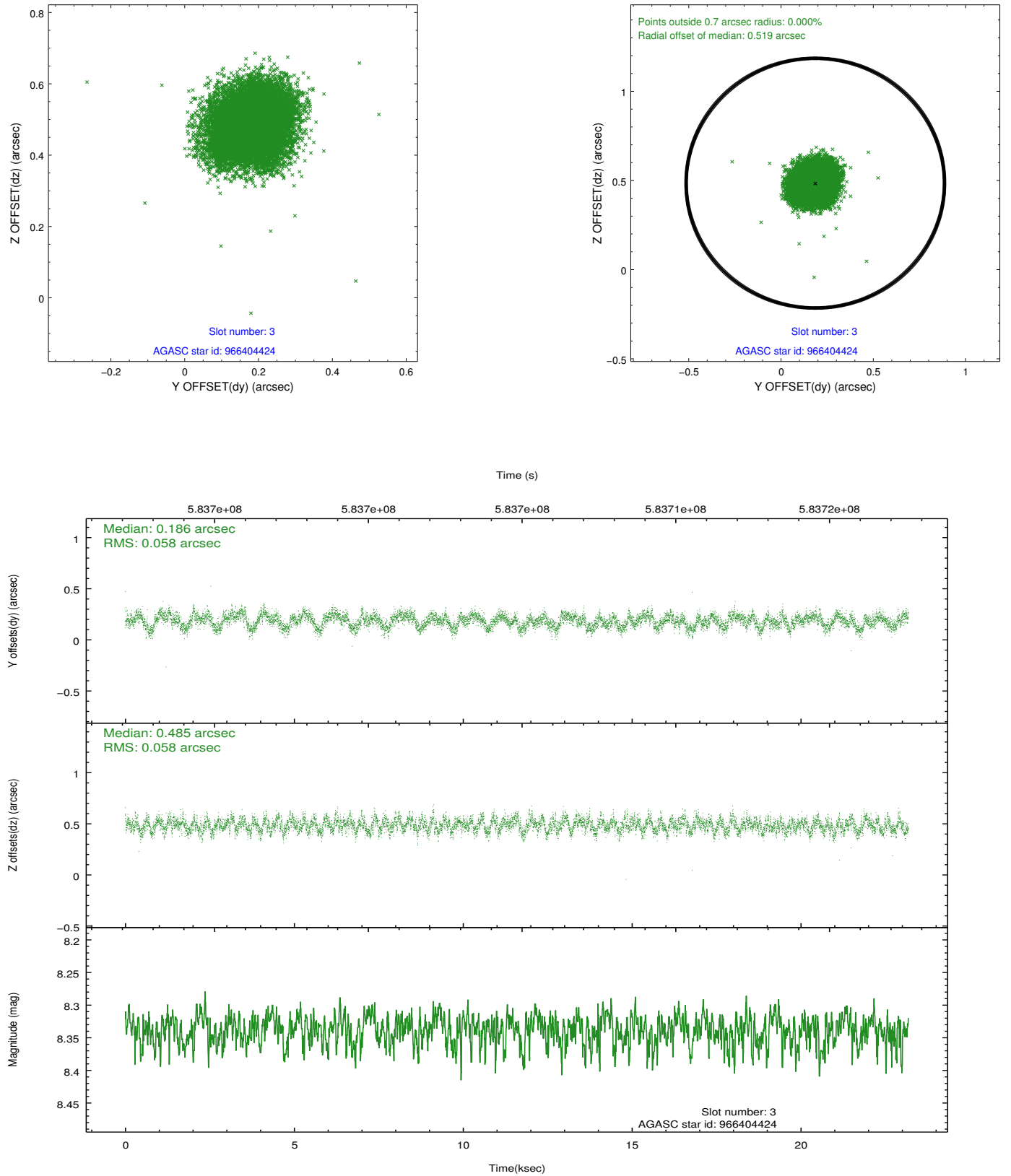


Slot Statistics

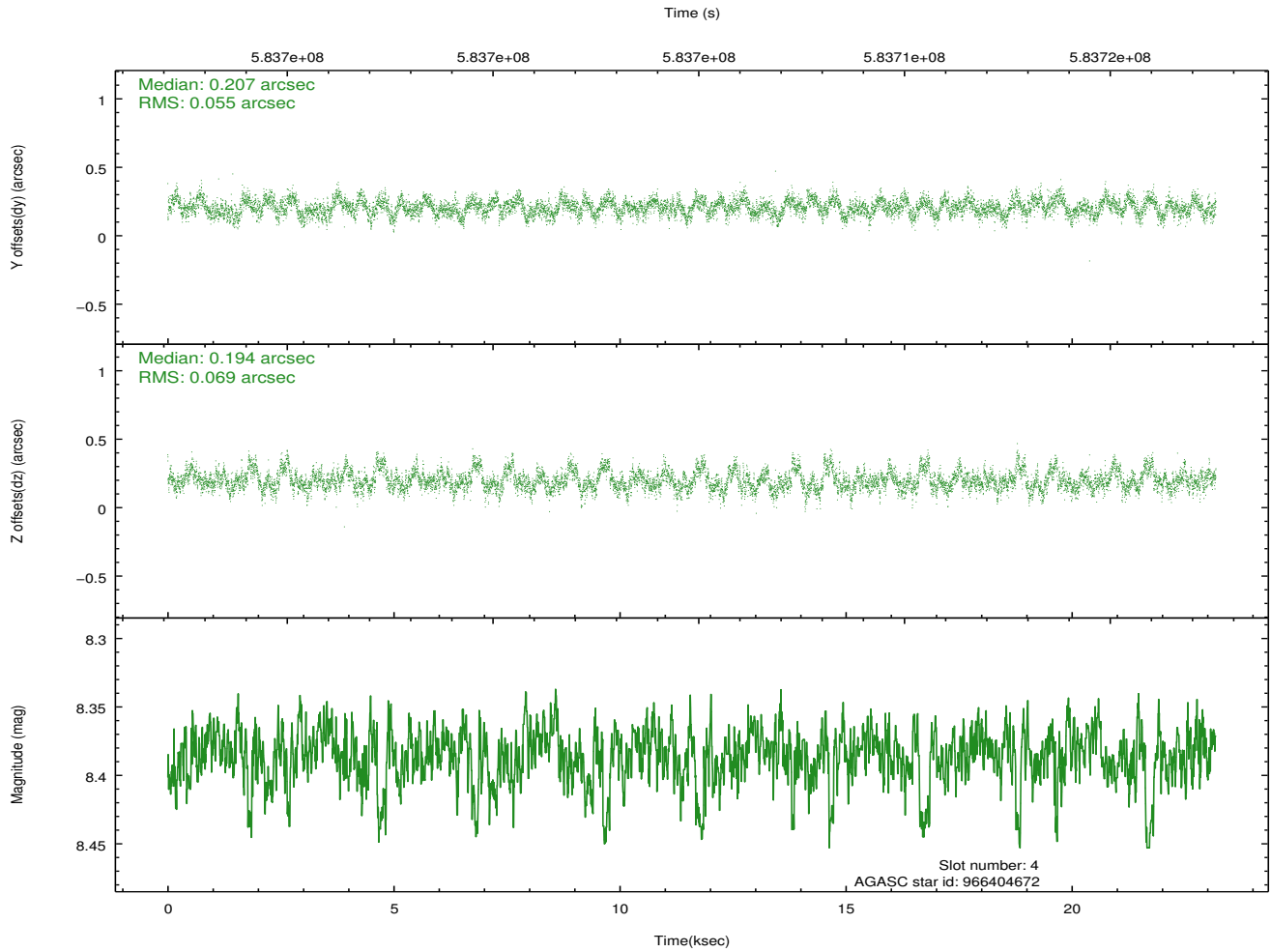
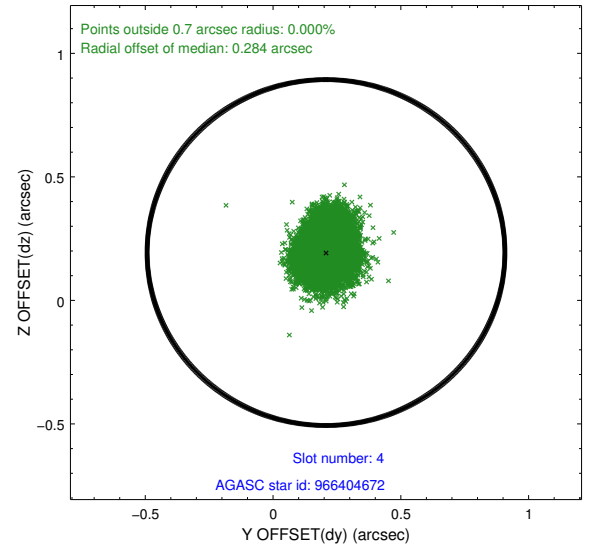
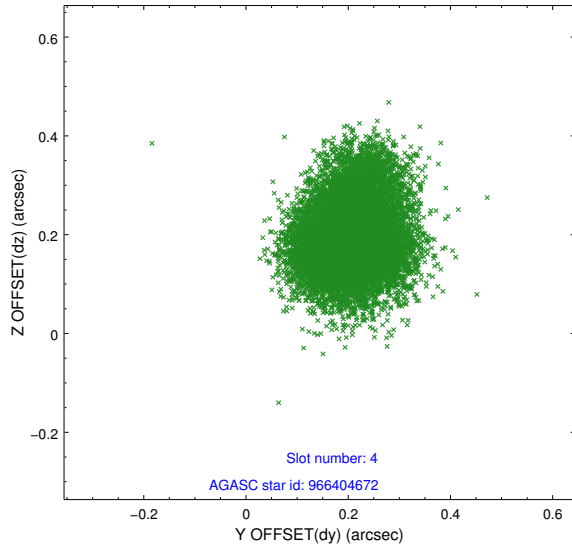
slot	status	used	id	mag	n_pts	med_dy	med_dz	dr1	dr2	ra	dec	mean_y	mean_z
0	FID		ACIS-I-1	7.25	5656	0.050	-0.021	0.036	0.048	0.000000	0.000000	924.36	-843.68
1	FID		ACIS-I-5	7.26	5656	-0.316	0.023	0.011	0.026	0.000000	0.000000	-1824.11	1053.68
2	FID		ACIS-I-6	7.27	5656	0.175	0.068	0.028	0.037	0.000000	0.000000	389.77	1698.46
3	GUIDE	used	966404424	8.34	11308	0.186	0.485	0.088	0.138	258.466186	-36.072439	-2051.42	-1457.69
4	GUIDE	used	966404672	8.39	11303	0.207	0.194	0.094	0.155	258.732174	-36.454154	-476.16	-1520.50
5	GUIDE	used	966003568	7.97	11308	-0.257	-0.057	0.094	0.154	259.362539	-35.536668	-2313.07	1782.30
6	GUIDE	used	966002288	8.85	11300	-0.119	-0.268	0.108	0.178	259.614800	-35.563330	-1838.94	2357.12
7	GUIDE	used	966530176	8.77	11292	-0.016	-0.357	0.089	0.146	260.167913	-36.682742	2426.29	1558.74

2.4 Star Slots

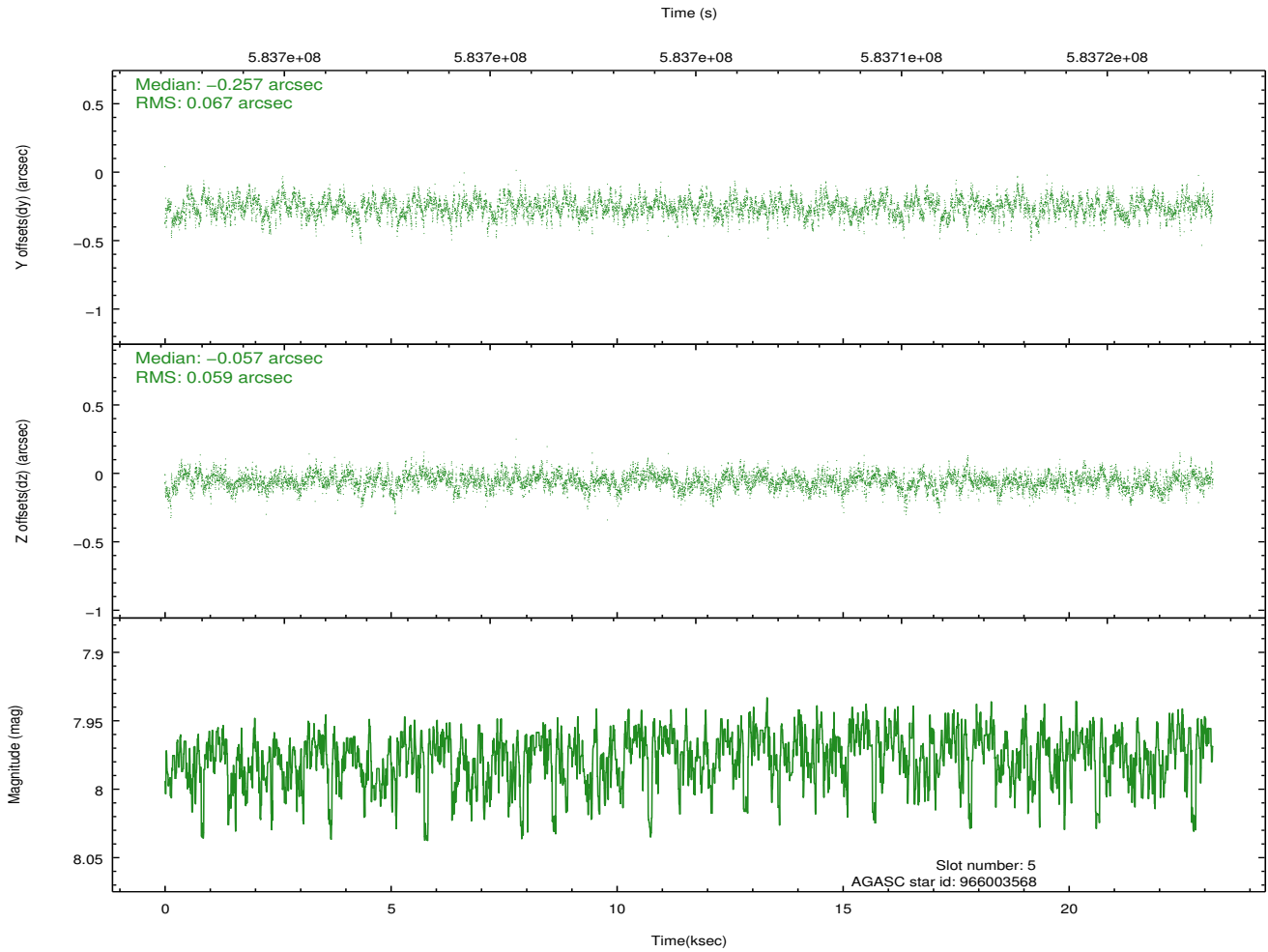
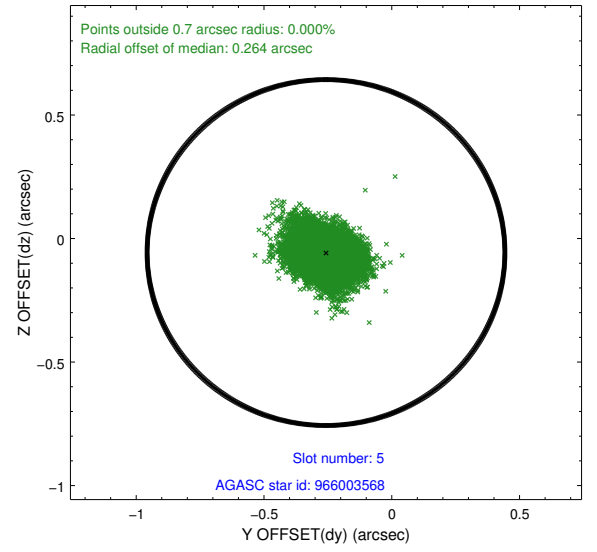
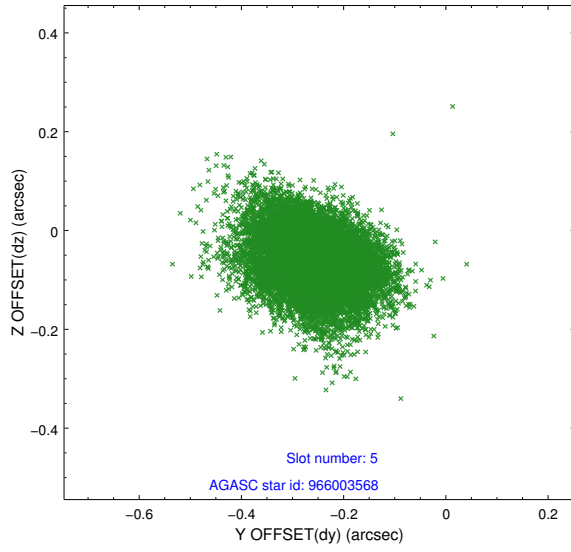
2.4.1 Slot 3



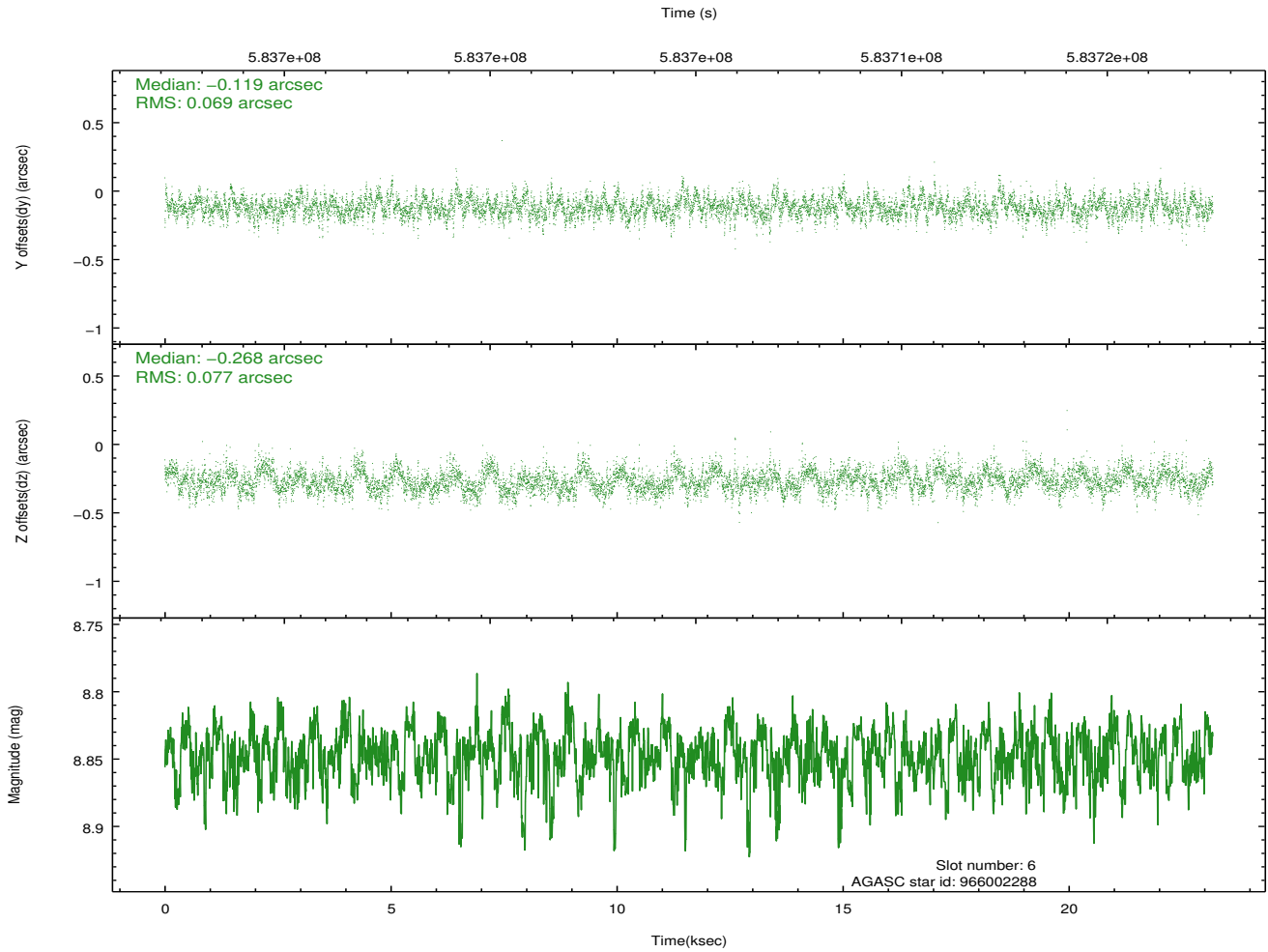
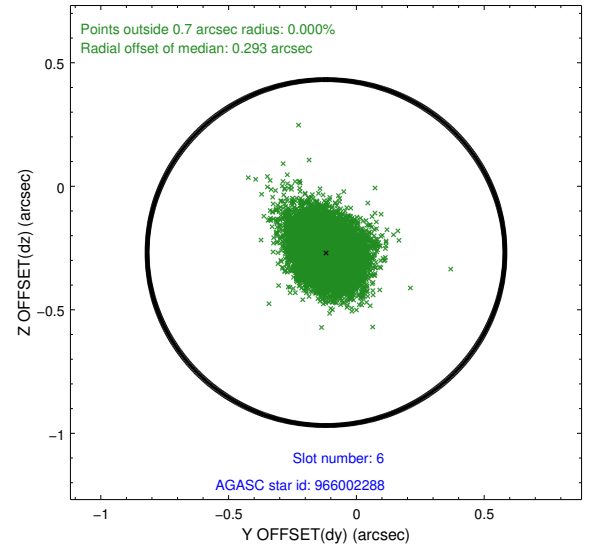
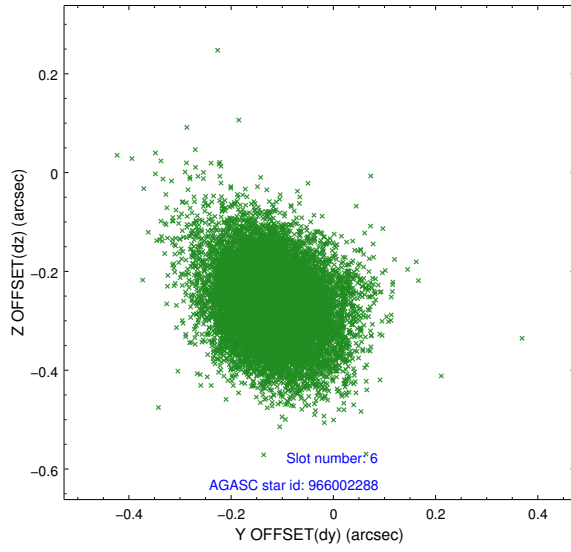
2.4.2 Slot 4



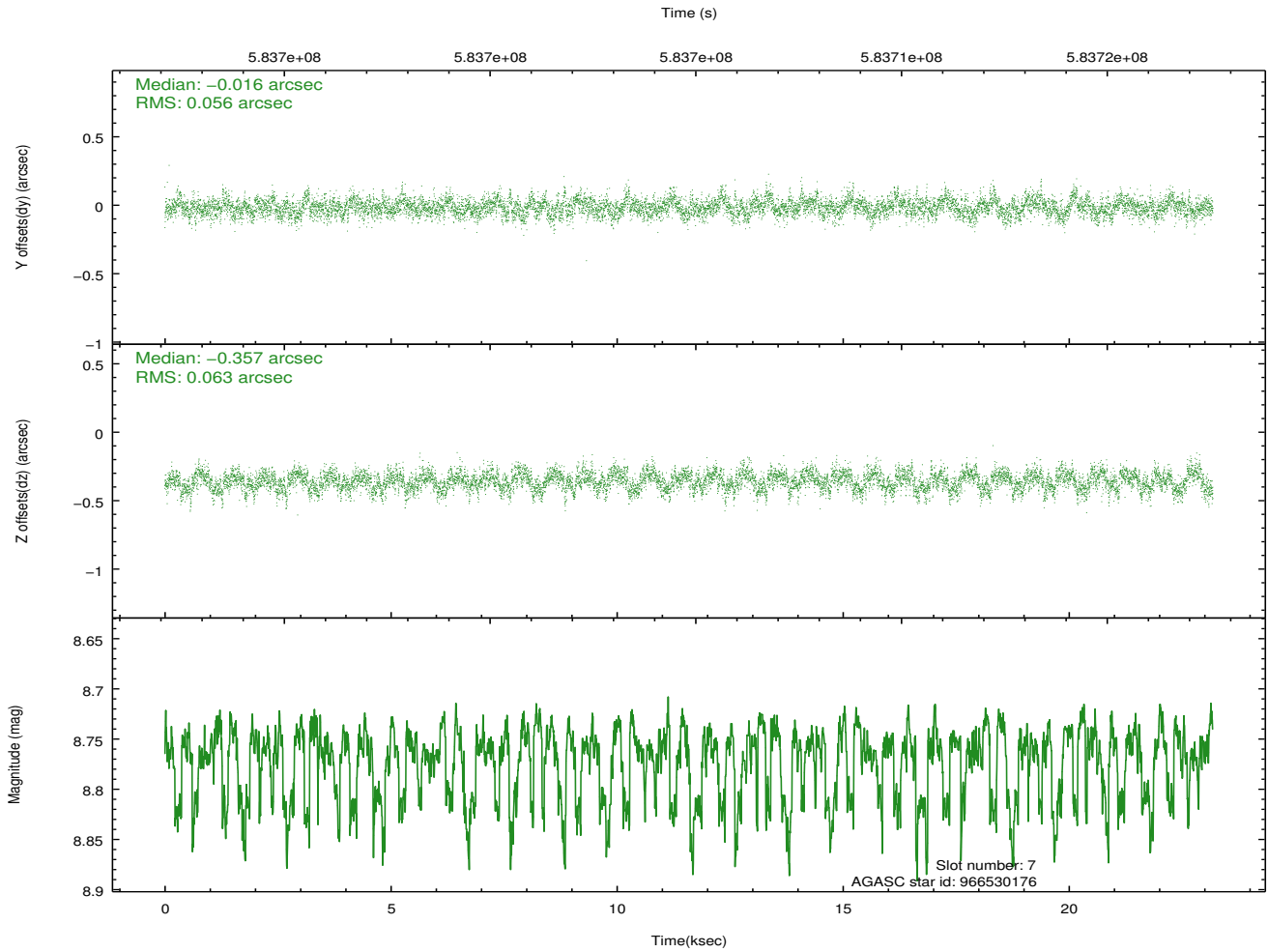
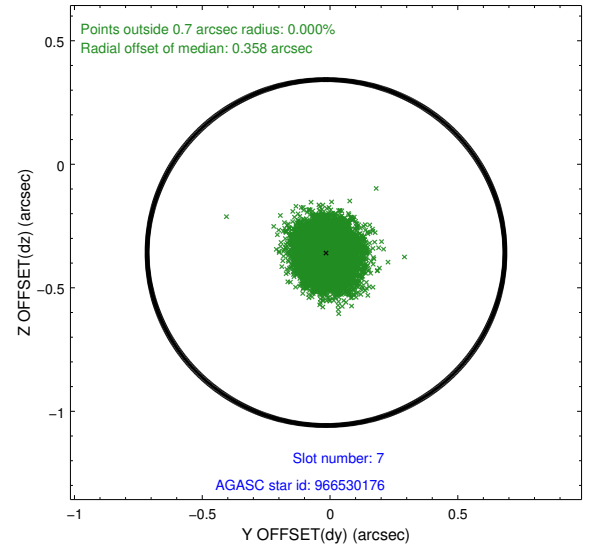
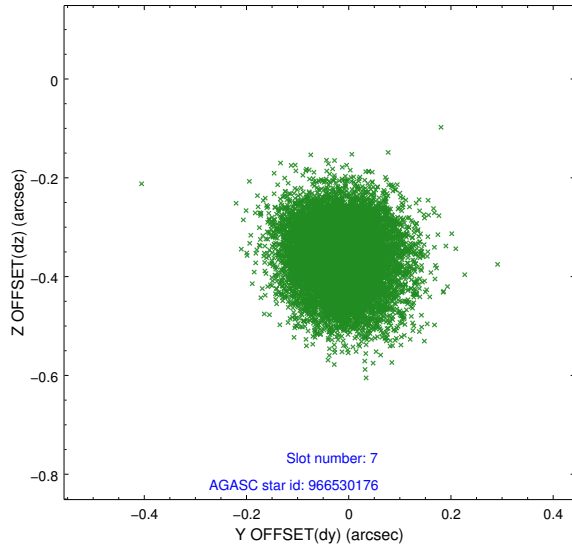
2.4.3 Slot 5



2.4.4 Slot 6

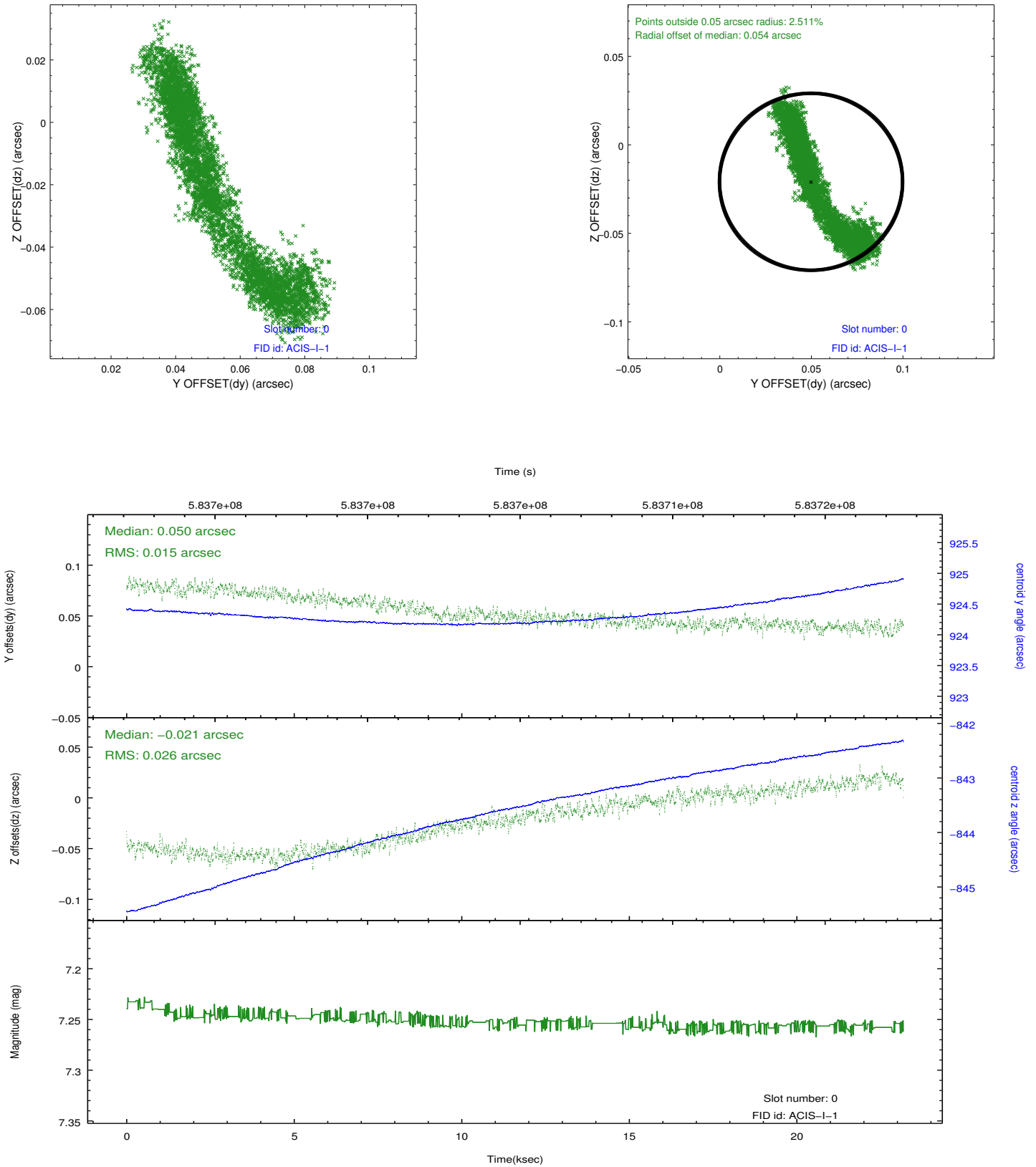


2.4.5 Slot 7

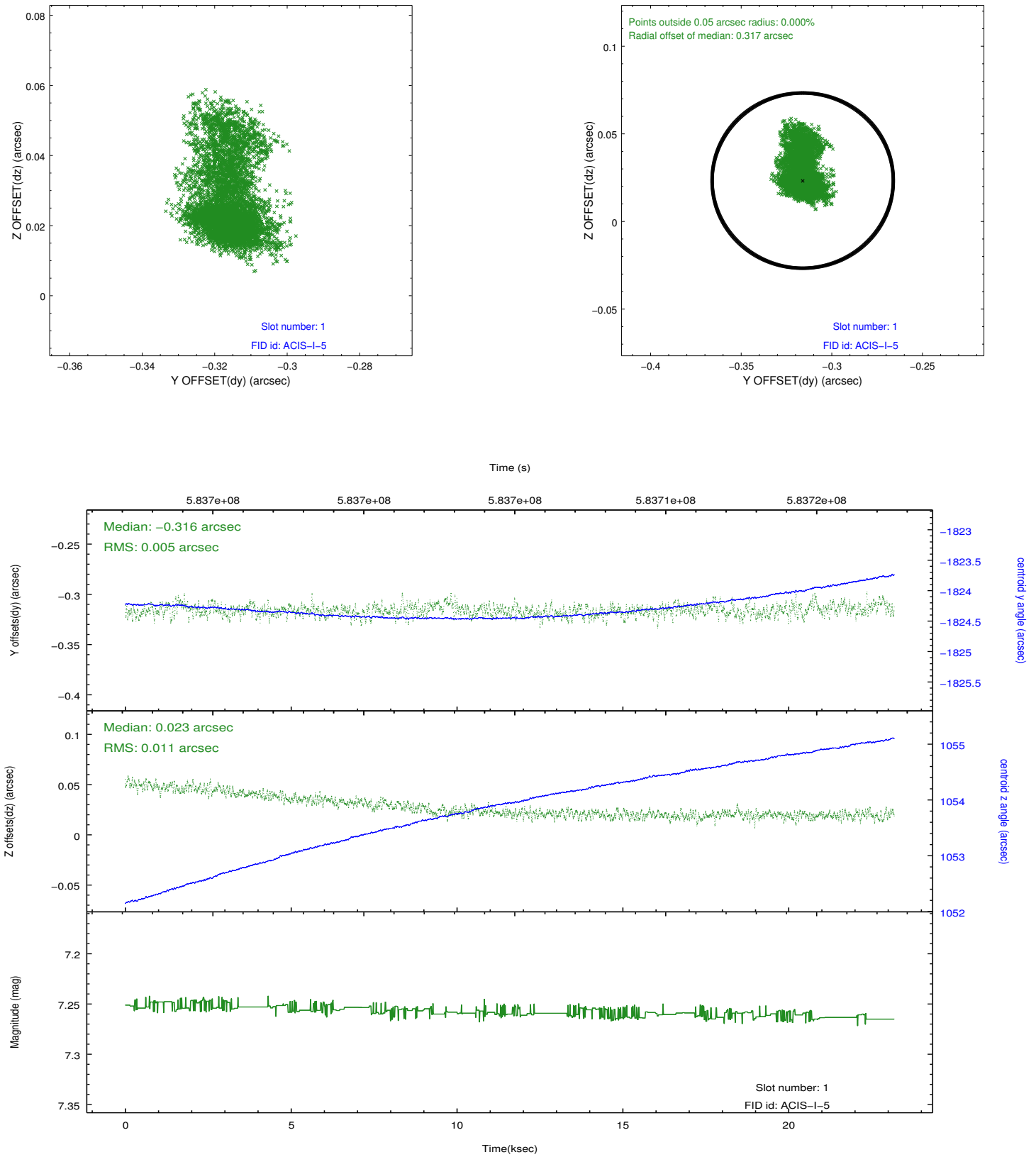


2.5 FID Slots

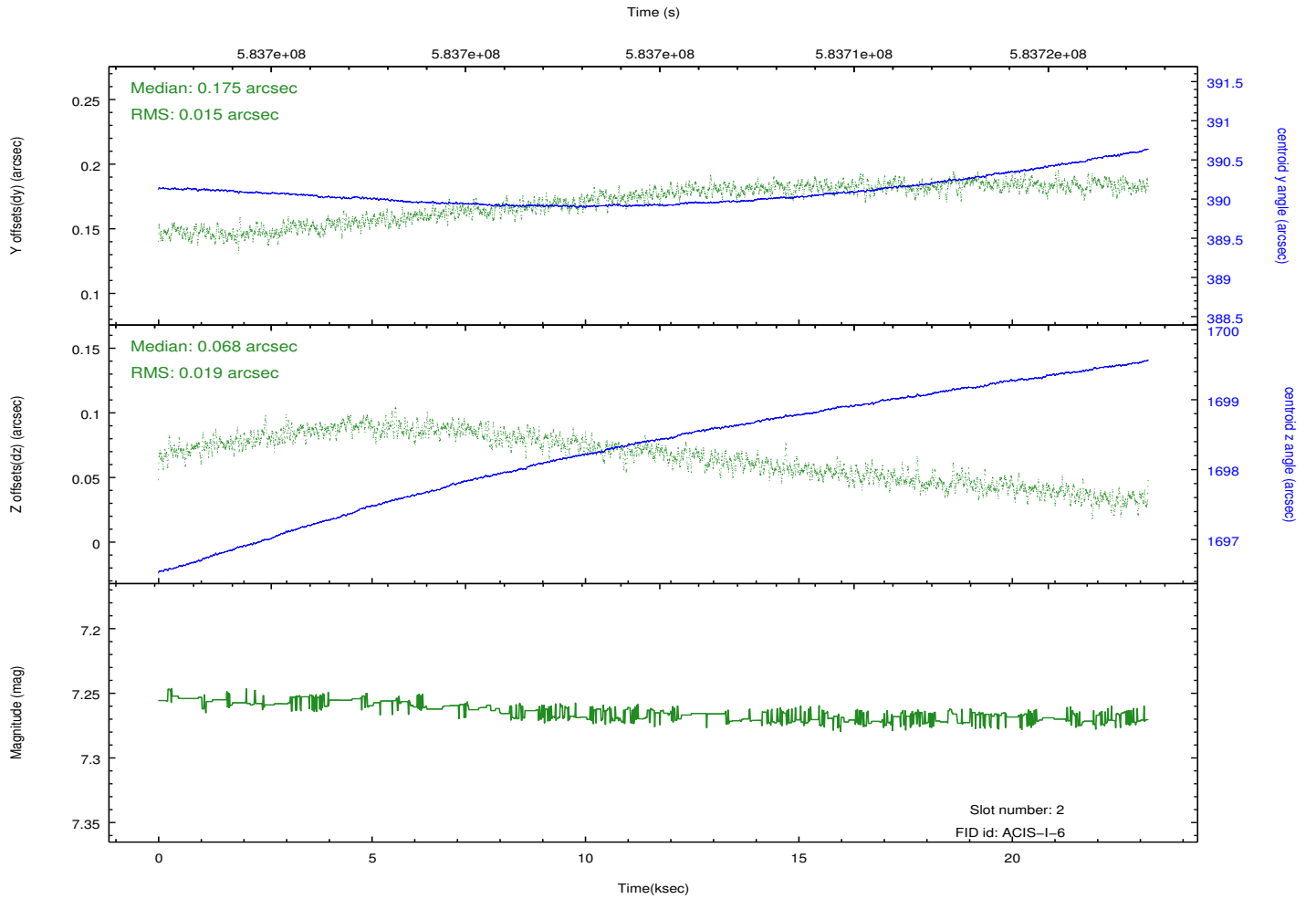
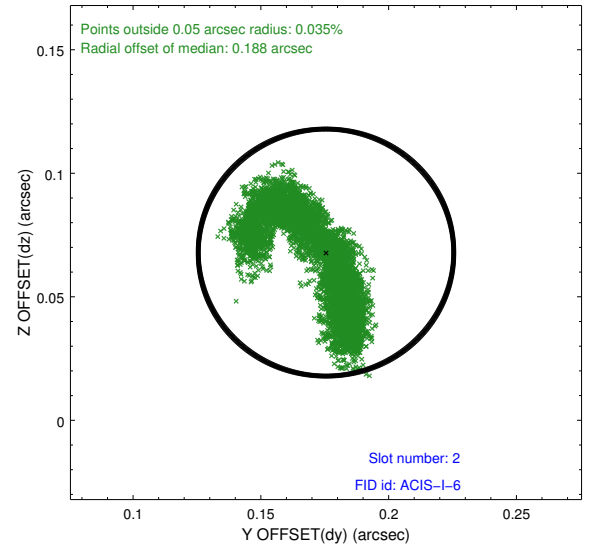
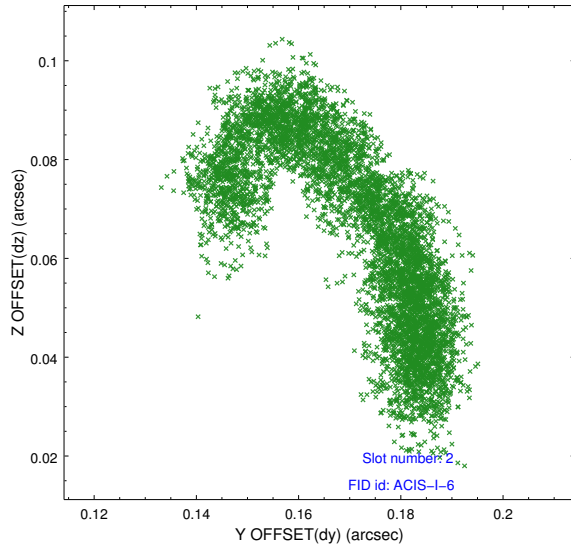
2.5.1 Slot 0



2.5.2 Slot 1



2.5.3 Slot 2



A Summary

A.1 Status

V&V Scientist	Jen Lauer
V&V Date (YYYY-MM-DD)	2016.07.01
V&V Edition	1
V&V Disposition and Status	OK
V&V Charge Time	22.949439072371

A.2 Comments