

V&V Reference Report

L2 ASCDS Version : 10.5

Observation 18289 - L2 Version 1
Chandra X-Ray Center

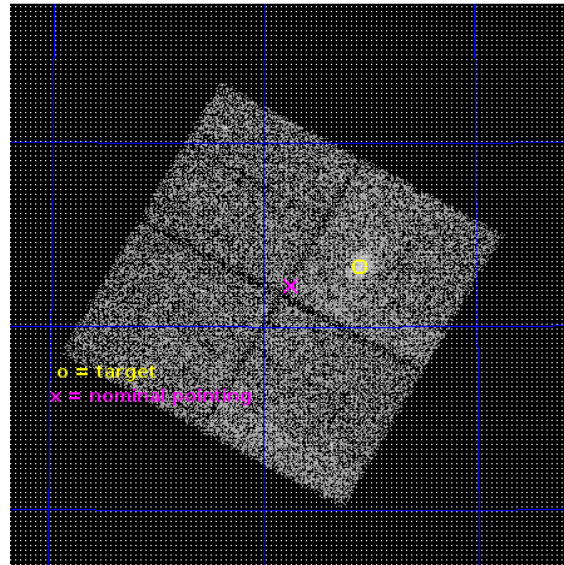
L2 Processing Date : Jun 24 2016

Contents

1	Front	2
2	OBI	3
2.1	OBI	3
2.1.1	Images	3
2.1.2	Bias	3
2.1.3	Parameters	4
2.1.4	Events	4
2.2	Compared Parameters	5
2.3	Aspect	6
2.4	Star Slots	9
2.4.1	Slot 3	9
2.4.2	Slot 4	10
2.4.3	Slot 5	11
2.4.4	Slot 6	12
2.4.5	Slot 7	13
2.5	FID Slots	14
2.5.1	Slot 0	14
2.5.2	Slot 1	15
2.5.3	Slot 2	16
A	Summary	17
A.1	Status	17
A.2	Comments	17

1 Front

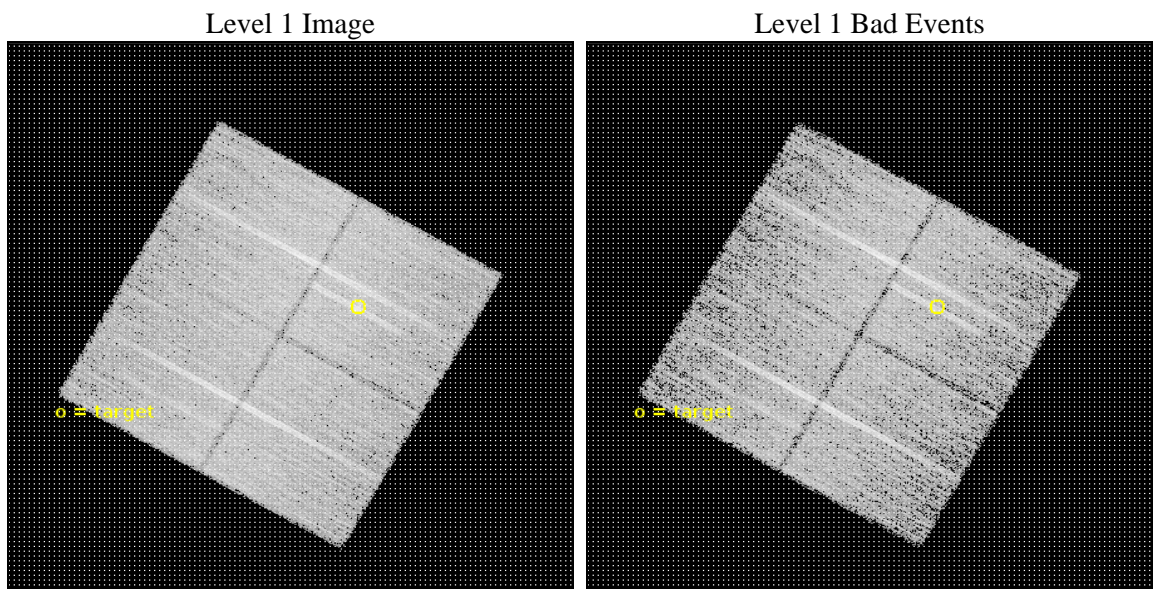
seq_num	801607	Sequence number
obs_id	18289	Observation id
title	Building a Cheap and Cheerful SZ-selected sample of galaxy clusters with the Planck Catalogue.	Proposal title
observer	Mariachiara Rossetti	Principal investigator
object	PSZ2 G141.77+14.19	Source name
dtcycle	0	
cycle	P	events from which exps? Prim/Second/Both
ra_targ	70.27417	Observer's specified target RA [deg]
dec_targ	68.2211	Observer's specified target Dec [deg]
ra_nom	70.434592852137	Nominal RA [deg]
dec_nom	68.203979567205	Nominal Dec [deg]
roll_nom	29.465892942615	Nominal Roll [deg]
revision	1	Processing version of data
ontime	21079.959231853	Sum of GTIs [s]
livetime	20804.534045649	Livetime [s]
ontime0	21083.100162268	Sum of GTIs [s]
ontime1	21083.100162268	Sum of GTIs [s]
ontime2	21083.100162268	Sum of GTIs [s]
ontime3	21079.959231853	Sum of GTIs [s]
l2events	51475	Number of level 2 events



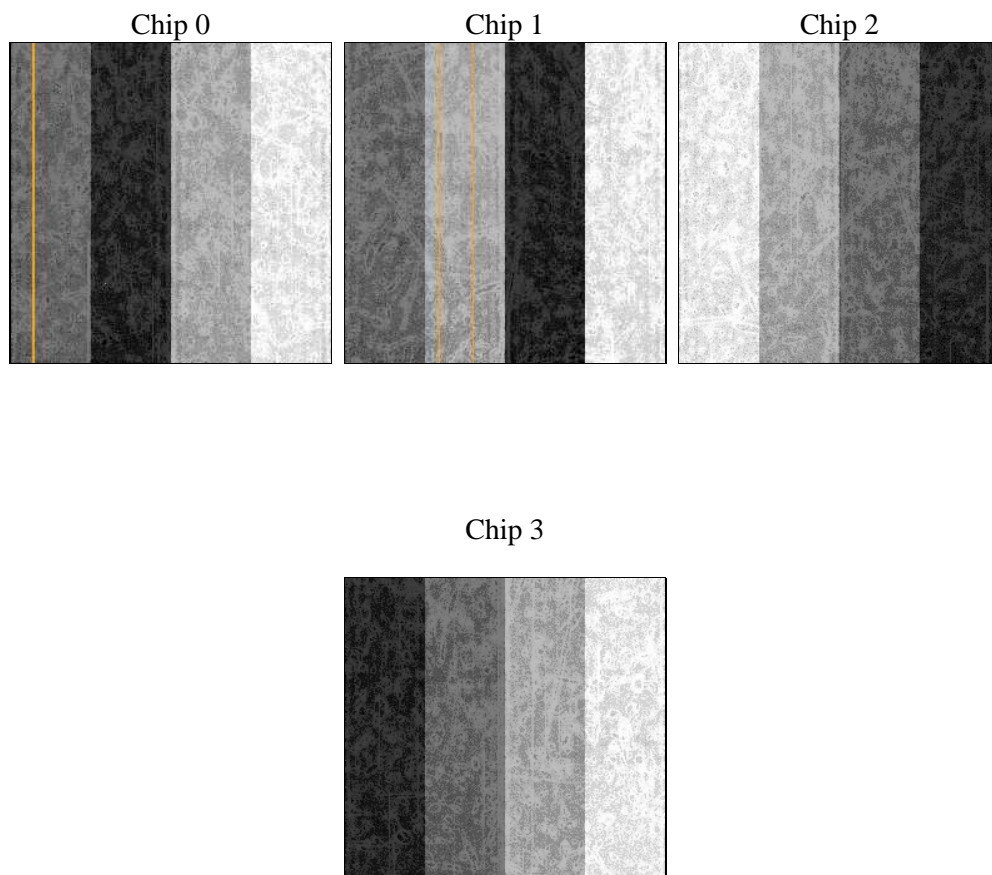
2 OBI

2.1 OBI

2.1.1 Images



2.1.2 Bias



2.1.3 Parameters

obi_num	0	Obi number	sched_exp_time	21000.000000	[s] Scheduled observation exposure time
ascdsver	10.5	Processing system revision	ontime	21079.959231853	Sum of GTIs [s]
caldsver	4.7.2	 	ontime0	21083.100162268	Sum of GTIs [s]
date	2016-06-25T01:21:59	Date and time of file creation	ontime1	21083.100162268	Sum of GTIs [s]
revision	1	Processing version of data	ontime2	21083.100162268	Sum of GTIs [s]
			ontime3	21079.959231853	Sum of GTIs [s]
			l1events	500912	Number of level 1 events

2.1.4 Events

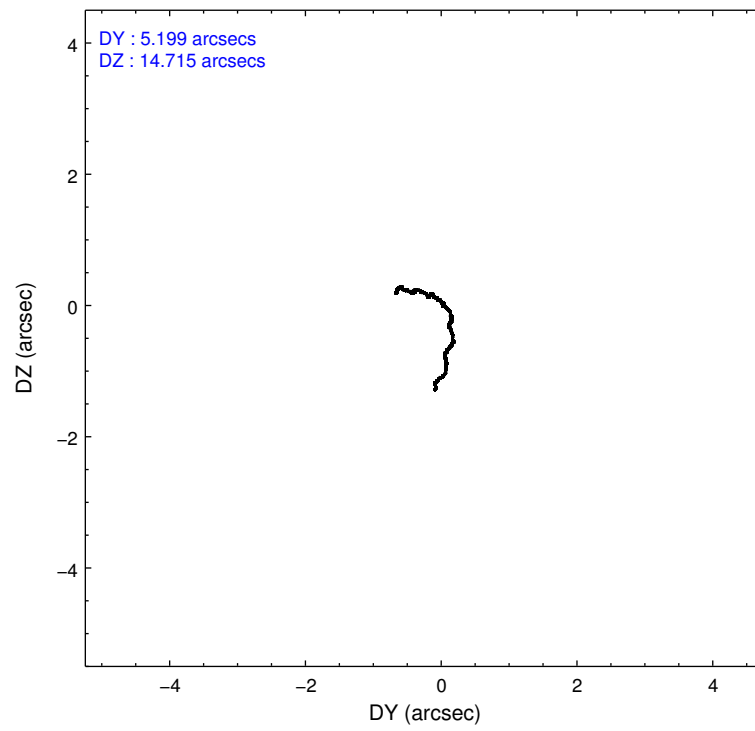
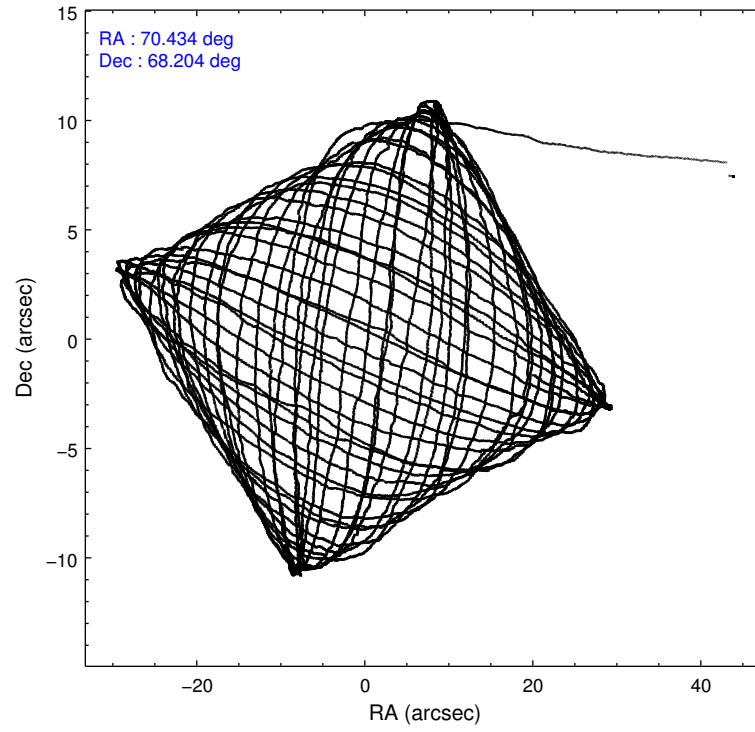
	ccd 0	ccd 1	ccd 2	ccd 3
level 1 events	117801	120982	131387	130742
rejected events	103170	104747	117016	114338
rejected %	87%	86%	89%	87%

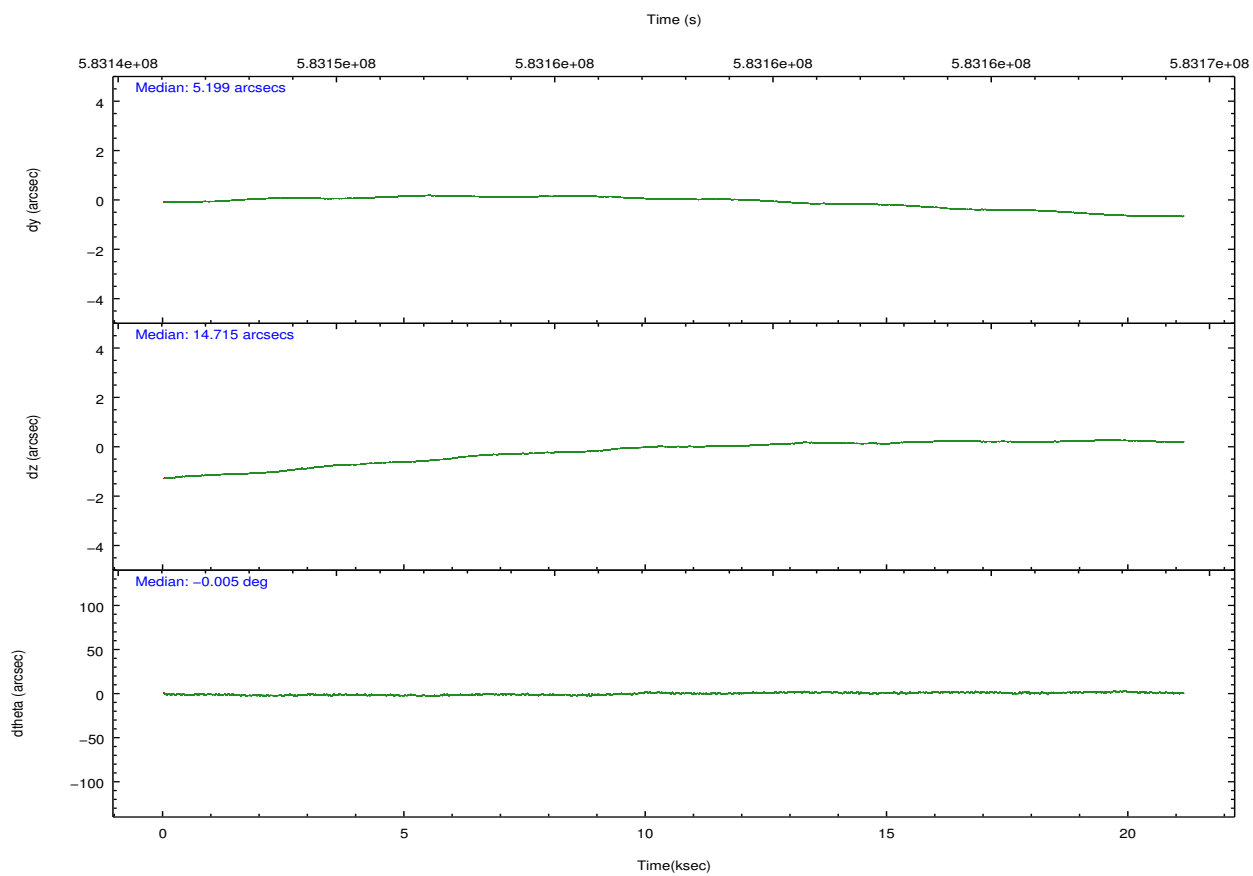
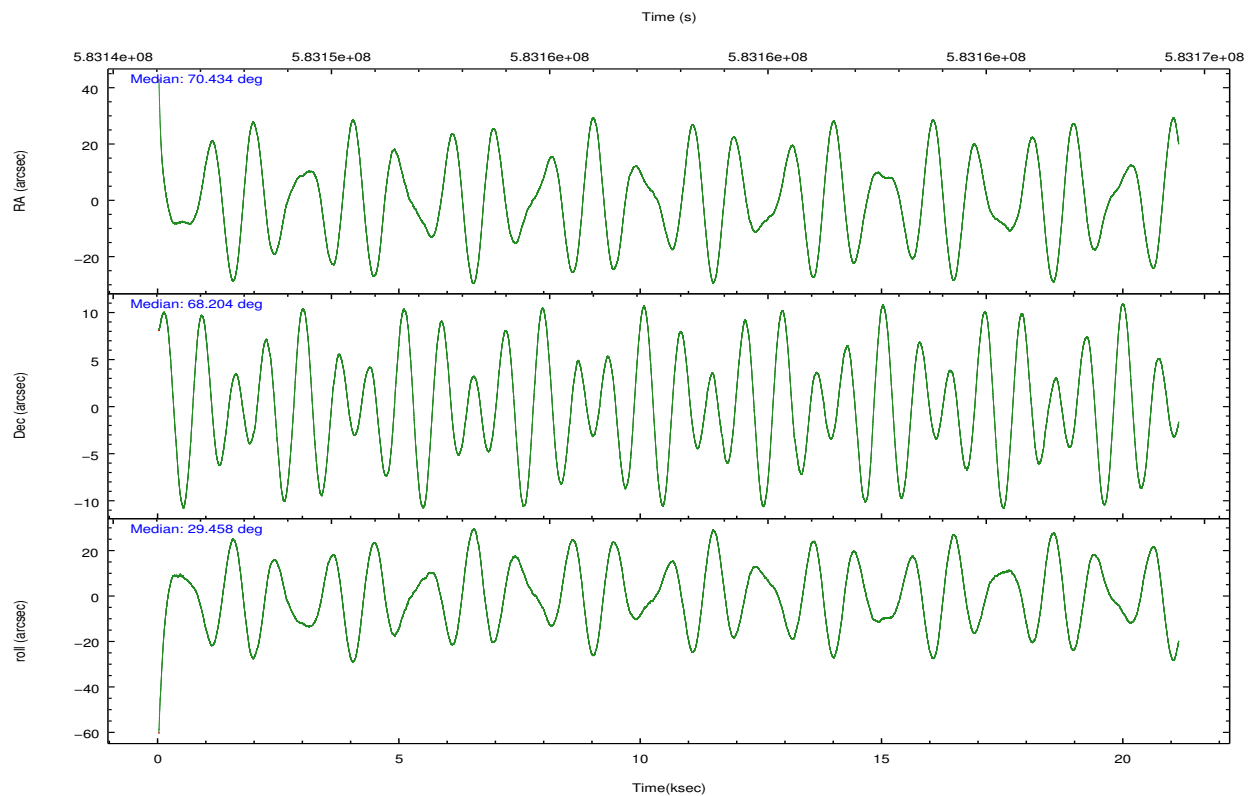
	ccd 0	ccd 1	ccd 2	ccd 3
grade 0 events	4829	5667	5126	7059
	4%	4%	3%	5%
grade 1 events	66	60	68	93
	0%	0%	0%	0%
grade 2 events	3839	3981	3621	3338
	3%	3%	2%	2%
grade 3 events	1510	1523	1443	1547
	1%	1%	1%	1%
grade 4 events	1454	1589	1436	1566
	1%	1%	1%	1%
grade 5 events	5634	6062	5257	6503
	4%	5%	4%	4%
grade 6 events	3003	3481	2751	2898
	2%	2%	2%	2%
grade 7 events	97466	98619	111685	107738
	82%	81%	85%	82%

2.2 Compared Parameters

Parameter	Planned	Actual	Parameter	Planned	Actual
Instrument	ACIS	ACIS	Obspar format version number	7	7
Detector	ACIS-0123	ACIS-0123	Obspar file type	PREDICTED	ACTUAL
Grating	NONE	NONE	Obspar update status	NONE	UPDATED
Data mode	VFAINT	VFAINT	Number of optional ACIS chips dropped	0	0
Observation mode	POINTING	POINTING	On-chip summing requested	N	N
[deg] Pointing RA	70.397055	70.43459285213727	Subarray requested	NONE	NONE
[deg] Pointing Dec	68.180130	68.20397956720477	Alternating exposures requested	N	N
[deg] Pointing Roll	29.292059	29.46589294261477	[s] Primary exposure time	0.000000	3.1
[mm] SIM focus pos	-0.782348	-0.7809083437167272			
[mm] SIM defocus	0	0.001439871863259334			
[mm] SIM translation stage pos	-233.592463	-233.5874344608287			
[mm] SIM translation stage offset	0	-0.005018542100998502			
[s] Observation start time (MET)	583147294.184000	583145744.32739			
Observation start date	2016-06-24T09:20:26	2016-06-24T08:55:44			
[s] Observation end time (MET)	583168294.184000	583168868.84121			
Observation end date	2016-06-24T15:10:26	2016-06-24T15:21:08			
Read mode	TIMED	TIMED			

2.3 Aspect



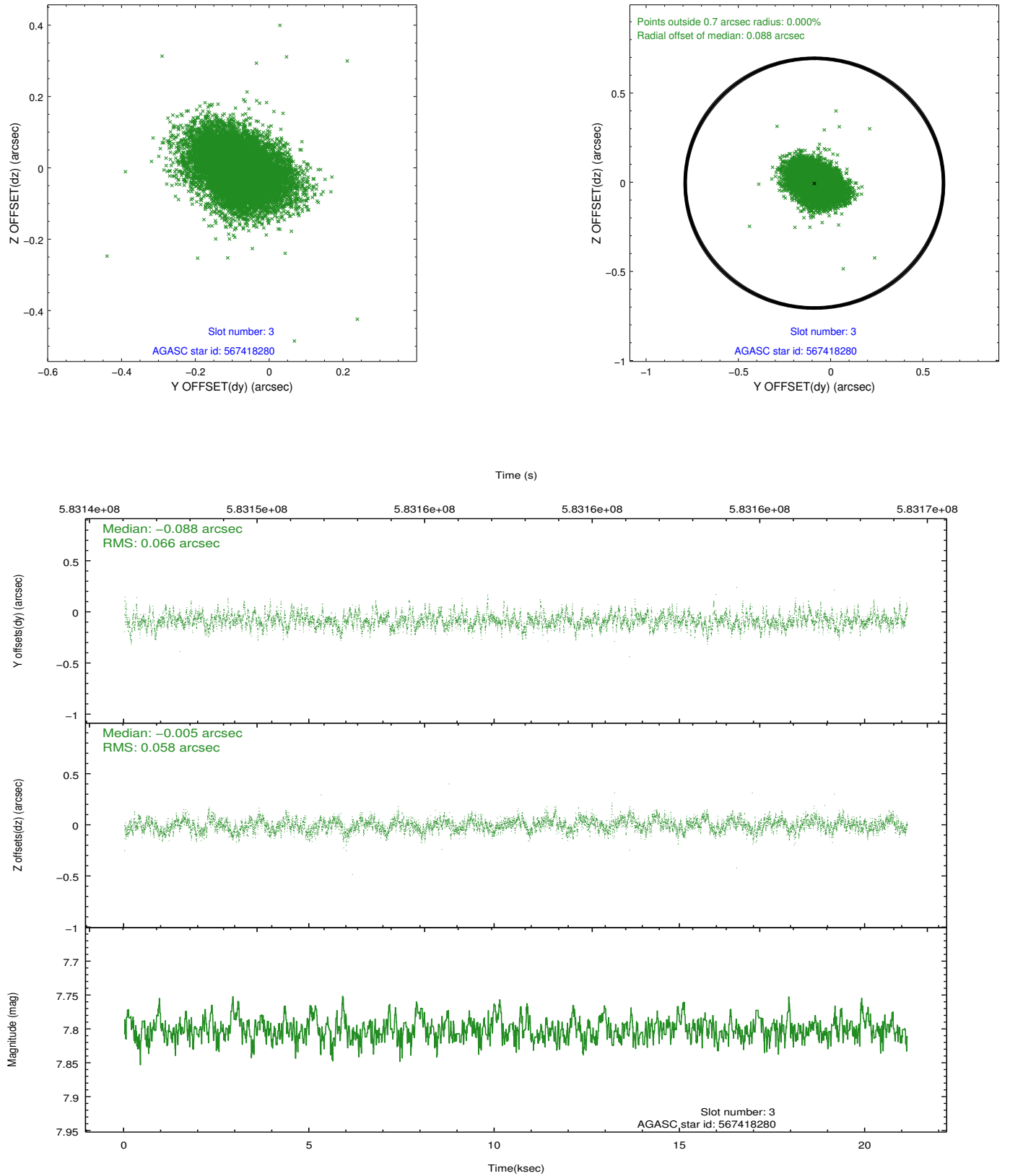


Slot Statistics

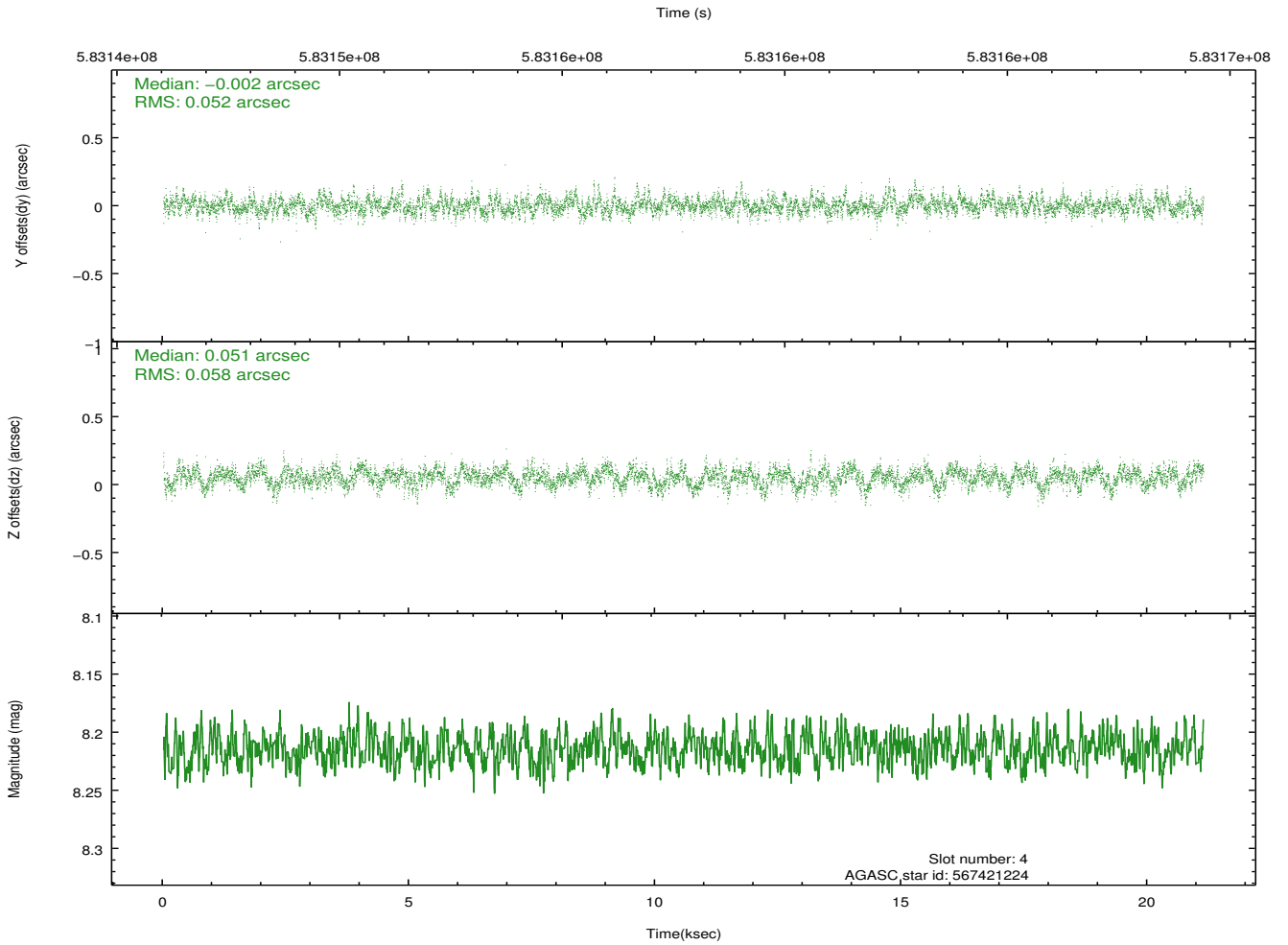
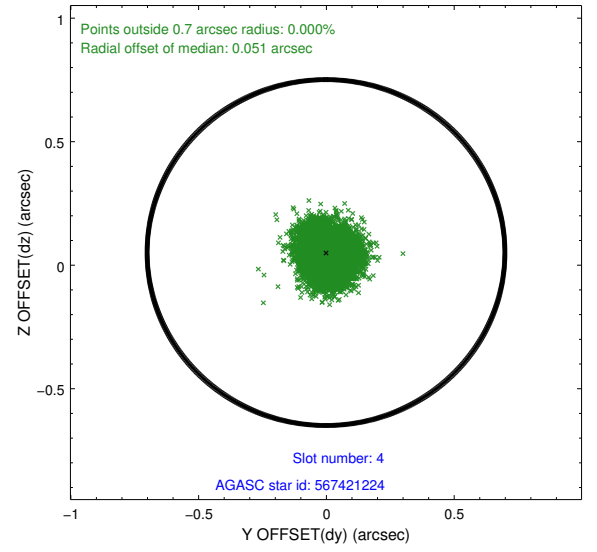
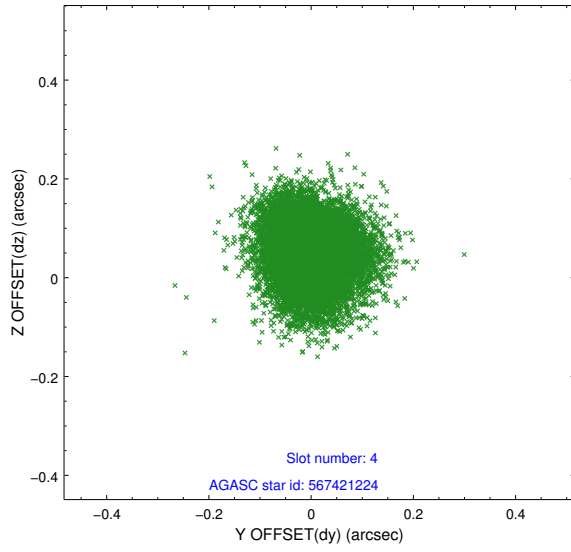
slot	status	used	id	mag	n_pts	med_dy	med_dz	dr1	dr2	ra	dec	mean_y	mean_z
0	FID		ACIS-I-1	7.24	5152	0.170	-0.031	0.012	0.018	0.000000	0.000000	934.86	-838.08
1	FID		ACIS-I-2	7.15	5153	-0.084	-0.101	0.014	0.023	0.000000	0.000000	-759.39	-844.77
2	FID		ACIS-I-5	7.21	5154	-0.182	0.204	0.016	0.026	0.000000	0.000000	-1813.94	1059.41
3	GUIDE	used	567418280	7.80	10306	-0.088	-0.005	0.091	0.153	69.348167	68.282382	-1032.52	1015.00
4	GUIDE	used	567421224	8.21	10304	-0.002	0.051	0.084	0.135	71.387479	67.930853	734.93	-1428.63
5	GUIDE	used	567424856	9.33	10298	0.172	-0.142	0.118	0.187	69.417885	68.163366	-1167.45	598.61
6	GUIDE	used	567429160	8.20	10304	0.051	0.089	0.097	0.162	70.919438	68.149635	558.49	-435.22
7	GUIDE	used	567429784	7.56	10306	-0.146	0.009	0.076	0.127	71.301347	67.773598	362.81	-1870.82

2.4 Star Slots

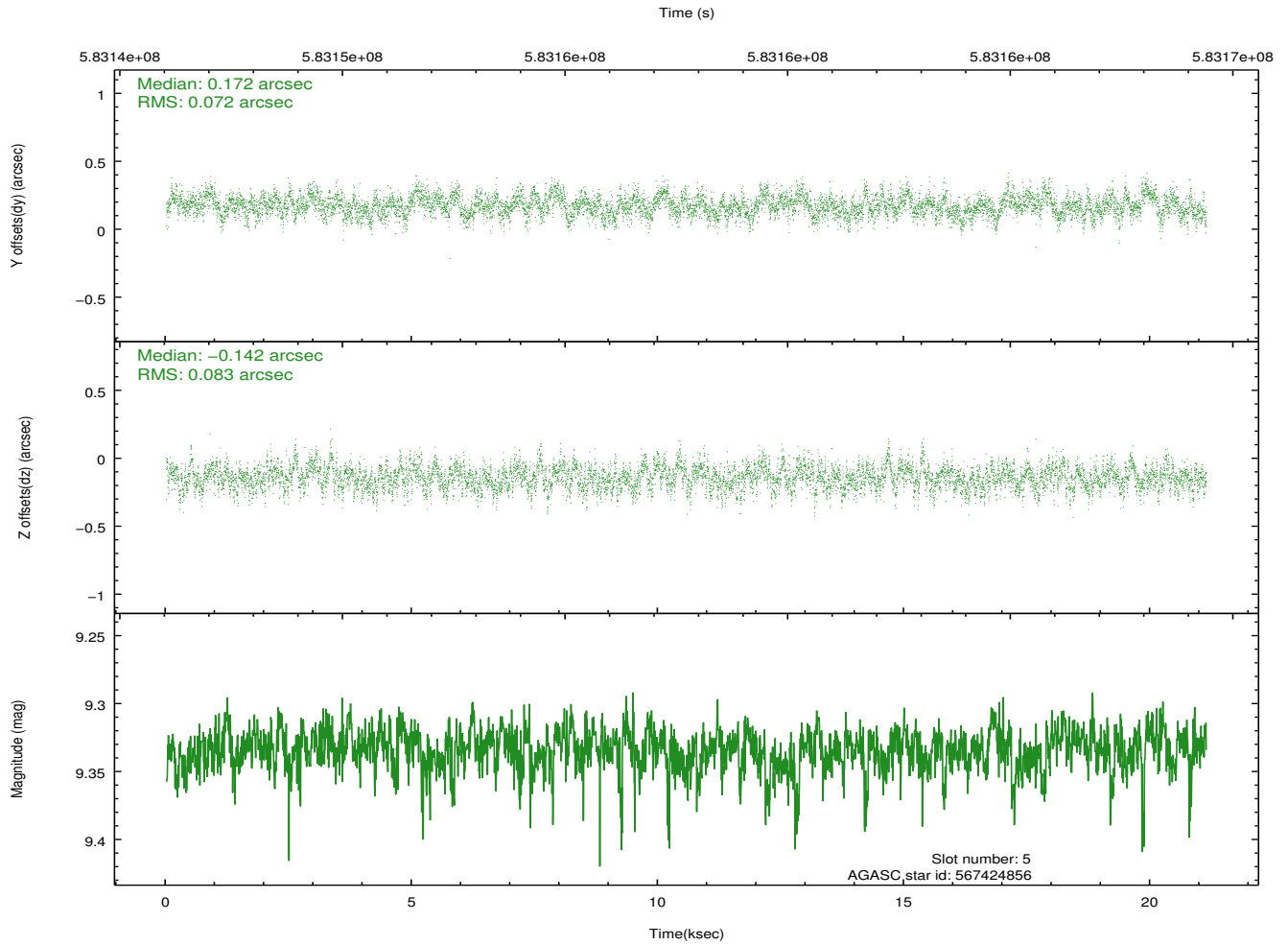
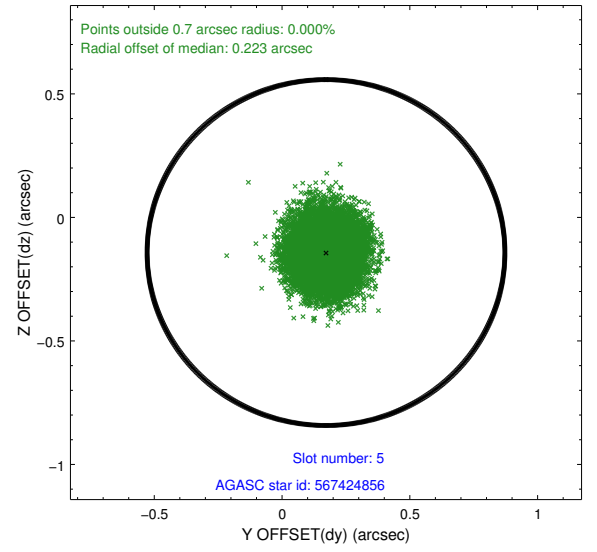
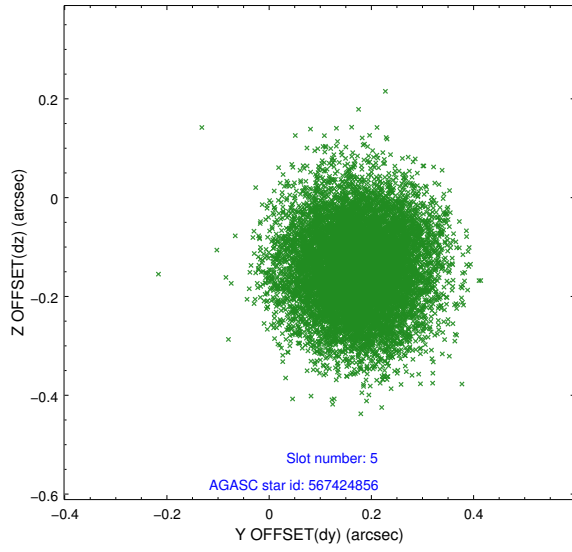
2.4.1 Slot 3



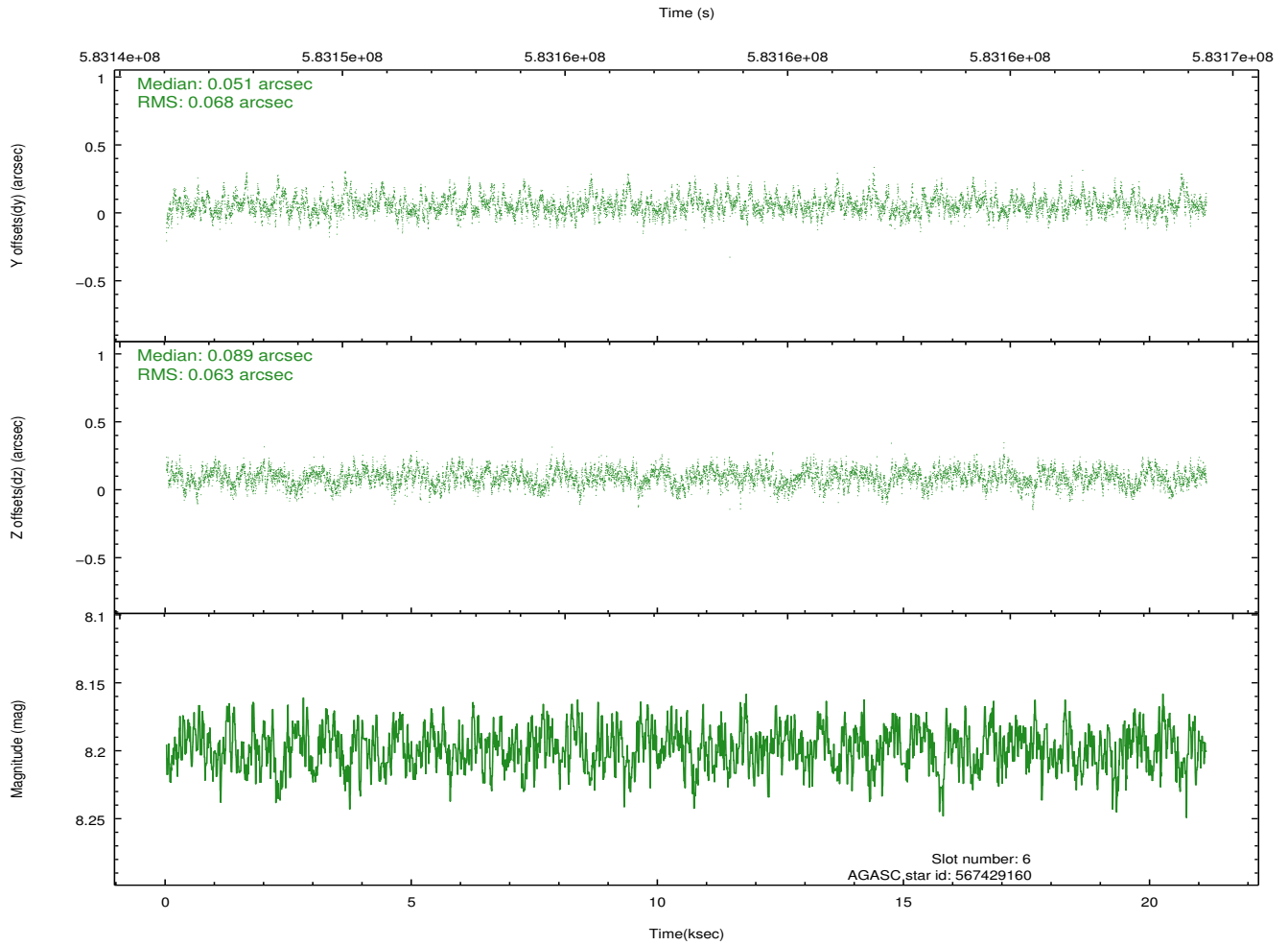
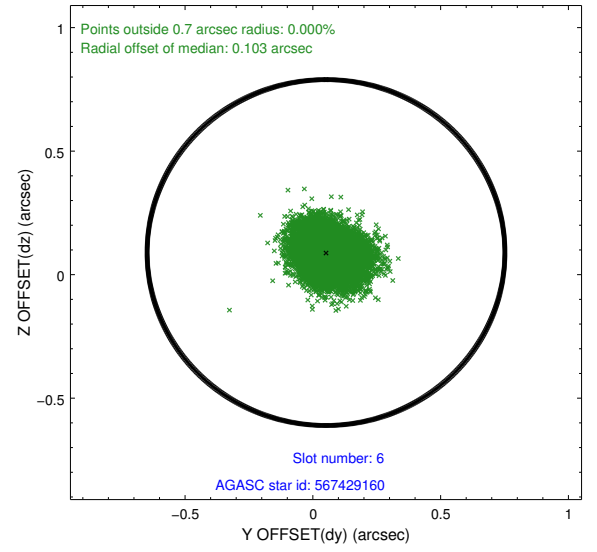
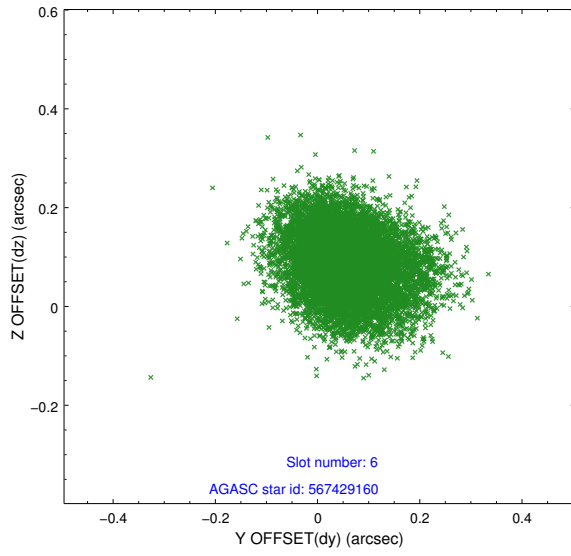
2.4.2 Slot 4



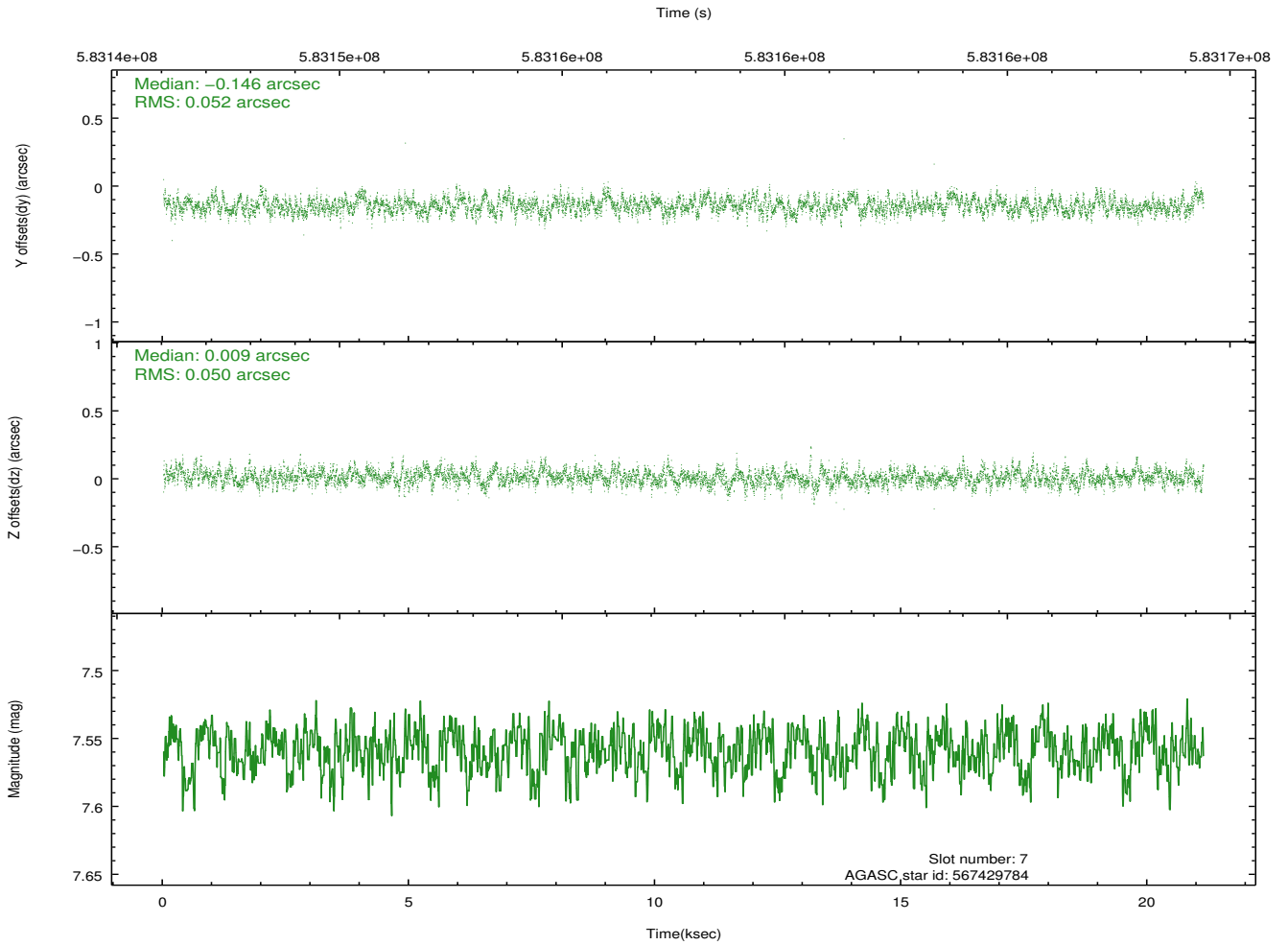
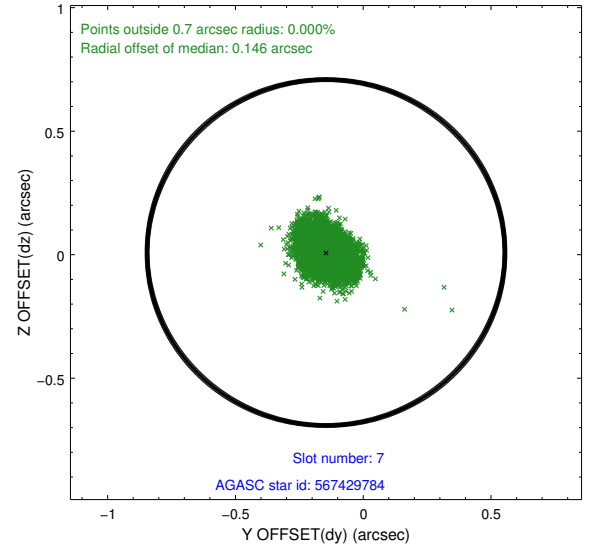
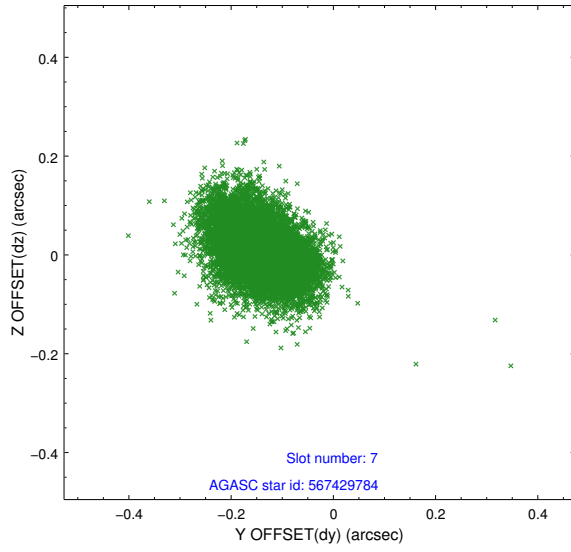
2.4.3 Slot 5



2.4.4 Slot 6

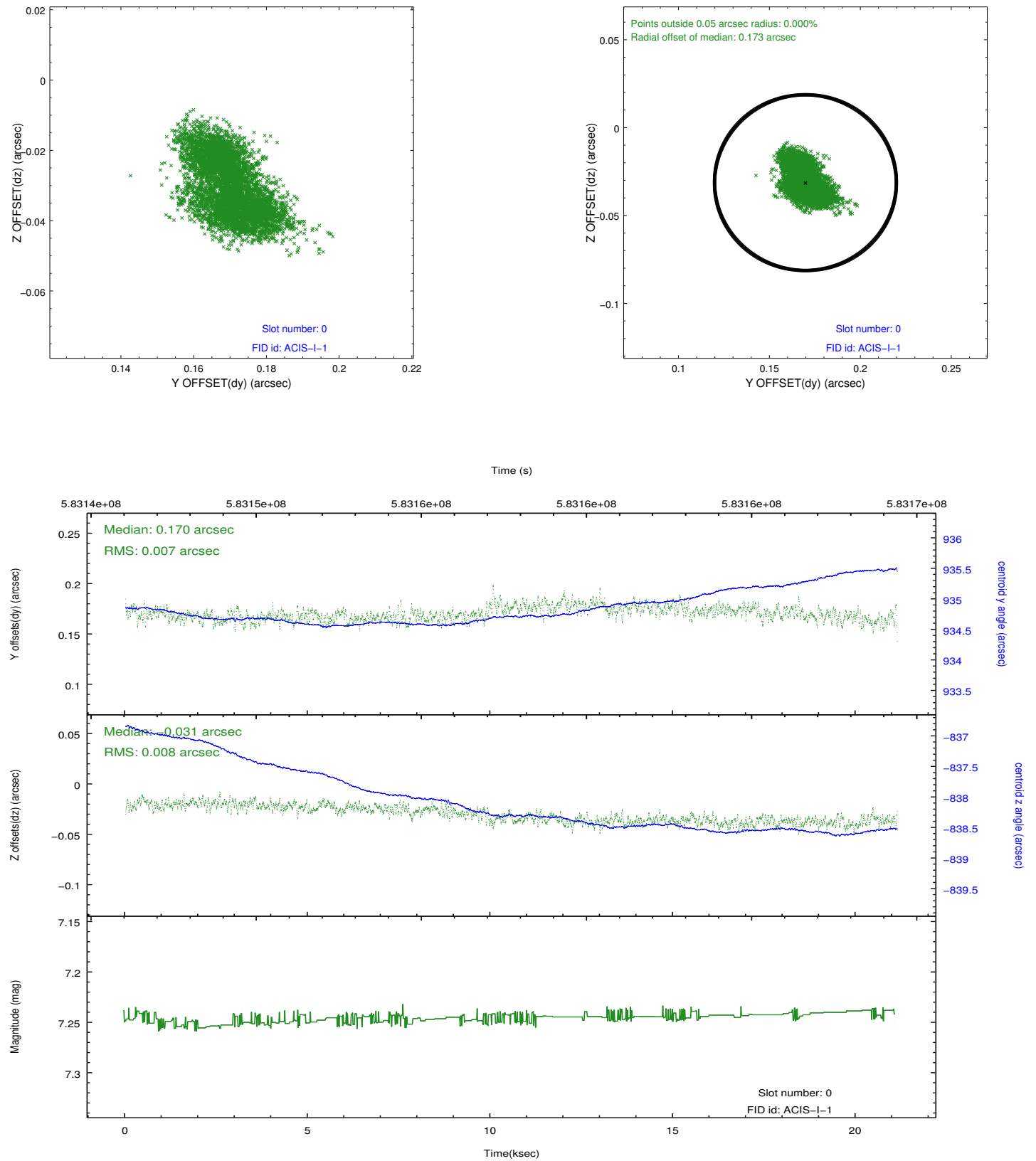


2.4.5 Slot 7

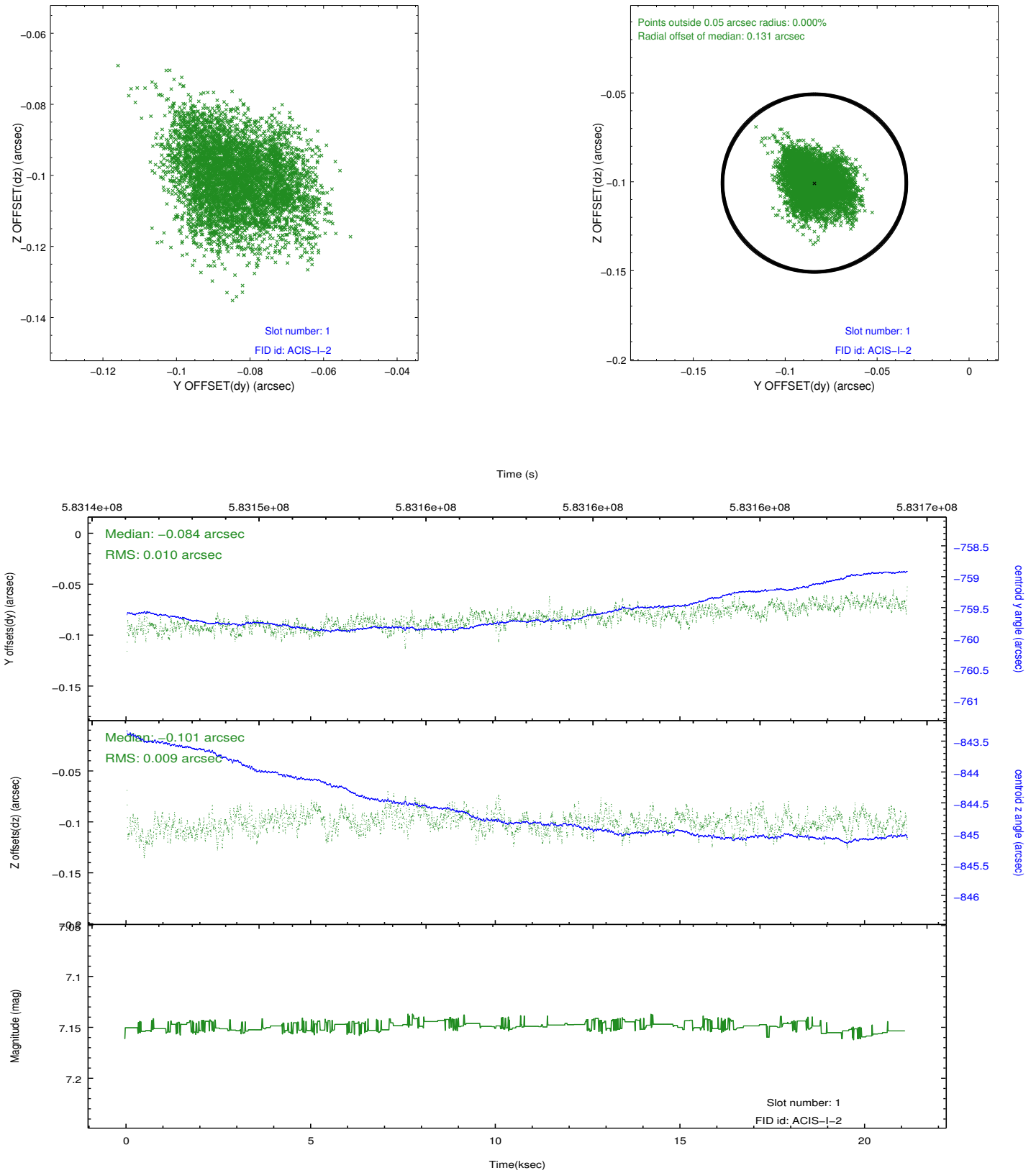


2.5 FID Slots

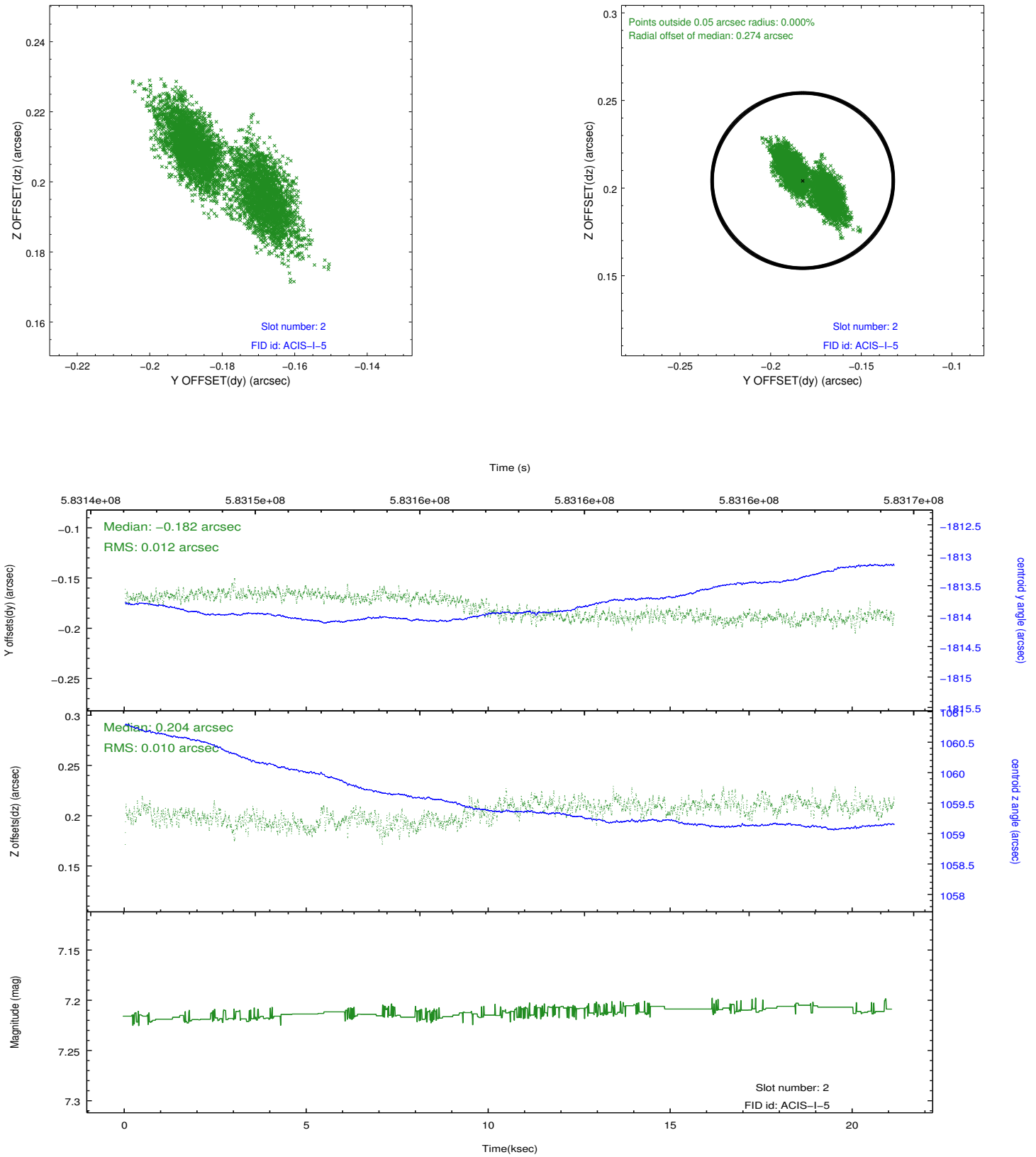
2.5.1 Slot 0



2.5.2 Slot 1



2.5.3 Slot 2



A Summary

A.1 Status

V&V Scientist	Joy Nichols
V&V Date (YYYY-MM-DD)	2016.06.27
V&V Edition	1
V&V Disposition and Status	OK
V&V Charge Time	21.079959231853

A.2 Comments