

V&V Reference Report

L2 ASCDS Version : 10.5.1.1

Observation 18284 - L2 Version 1
Chandra X-Ray Center

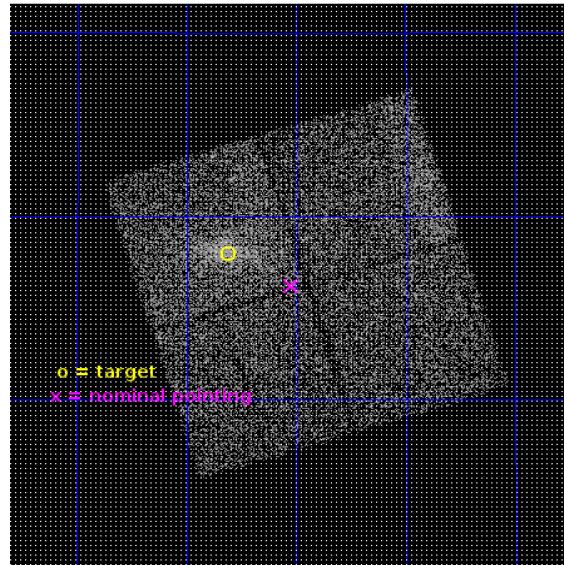
L2 Processing Date : Sep 2 2016

Contents

1	Front	2
2	OBI	3
2.1	OBI	3
2.1.1	Images	3
2.1.2	Bias	3
2.1.3	Parameters	4
2.1.4	Events	4
2.2	Compared Parameters	5
2.3	Aspect	6
2.4	Star Slots	9
2.4.1	Slot 3	9
2.4.2	Slot 4	10
2.4.3	Slot 5	11
2.4.4	Slot 6	12
2.4.5	Slot 7	13
2.5	FID Slots	14
2.5.1	Slot 0	14
2.5.2	Slot 1	15
2.5.3	Slot 2	16
A	Summary	17
A.1	Status	17
A.2	Comments	17

1 Front

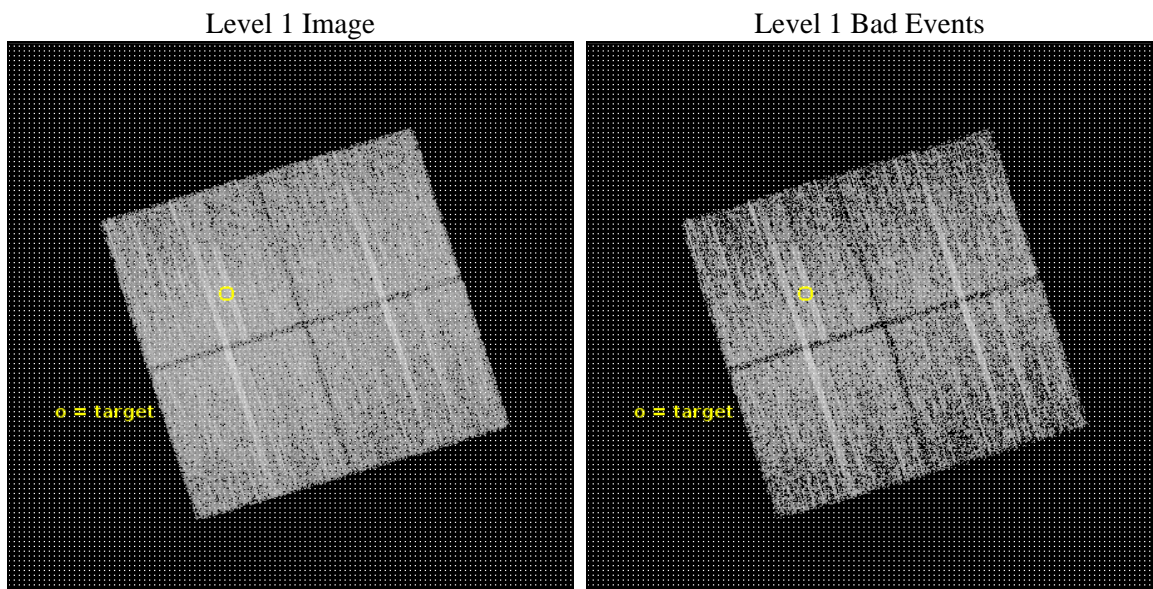
seq_num	801602	Sequence number
obs_id	18284	Observation id
title	Building a Cheap and Cheerful SZ-selected sample of galaxy clusters with the Planck Catalogue.	Proposal title
observer	Mariachiara Rossetti	Principal investigator
object	PSZ2 G066.41+27.03	Source name
dtcycle	0	
cycle	P	events from which exps? Prim/Second/Both
ra_targ	269.202083	Observer's specified target RA [deg]
dec_targ	40.132694	Observer's specified target Dec [deg]
ra_nom	269.1304598579	Nominal RA [deg]
dec_nom	40.103792099305	Nominal Dec [deg]
roll_nom	252.63855638488	Nominal Roll [deg]
revision	1	Processing version of data
ontime	12789.459059358	Sum of GTIs [s]
livetime	12622.355361284	Livetime [s]
ontime0	12789.335909486	Sum of GTIs [s]
ontime1	12789.376979351	Sum of GTIs [s]
ontime2	12786.277019262	Sum of GTIs [s]
ontime3	12789.459059358	Sum of GTIs [s]
l2events	32920	Number of level 2 events



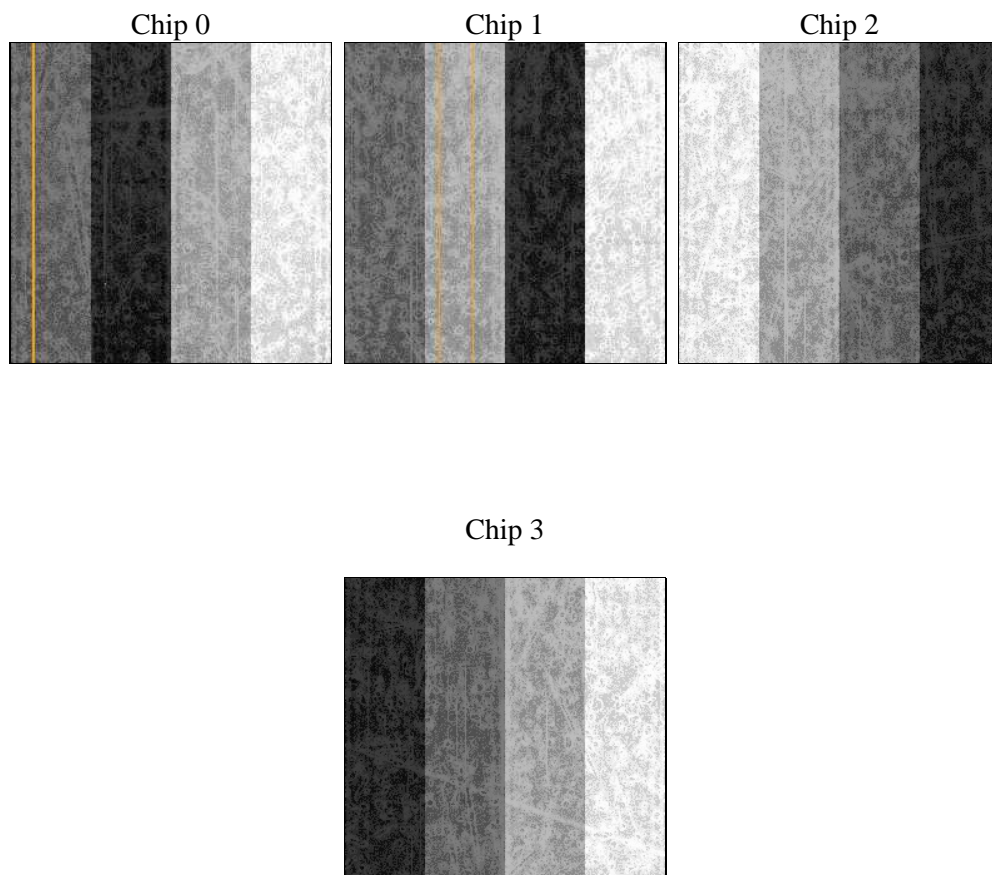
2 OBI

2.1 OBI

2.1.1 Images



2.1.2 Bias



2.1.3 Parameters

obi_num	0	Obi number	sched_exp_time	13000.000000	[s] Scheduled observation exposure time
ascdsver	10.5.1.1	Processing system revision	ontime	12789.459059358	Sum of GTIs [s]
caldsver	4.7.2	 	ontime0	12789.335909486	Sum of GTIs [s]
date	2016-09-02T16:07:22	Date and time of file creation	ontime1	12789.376979351	Sum of GTIs [s]
revision	1	Processing version of data	ontime2	12786.277019262	Sum of GTIs [s]
			ontime3	12789.459059358	Sum of GTIs [s]
			l1events	313566	Number of level 1 events

2.1.4 Events

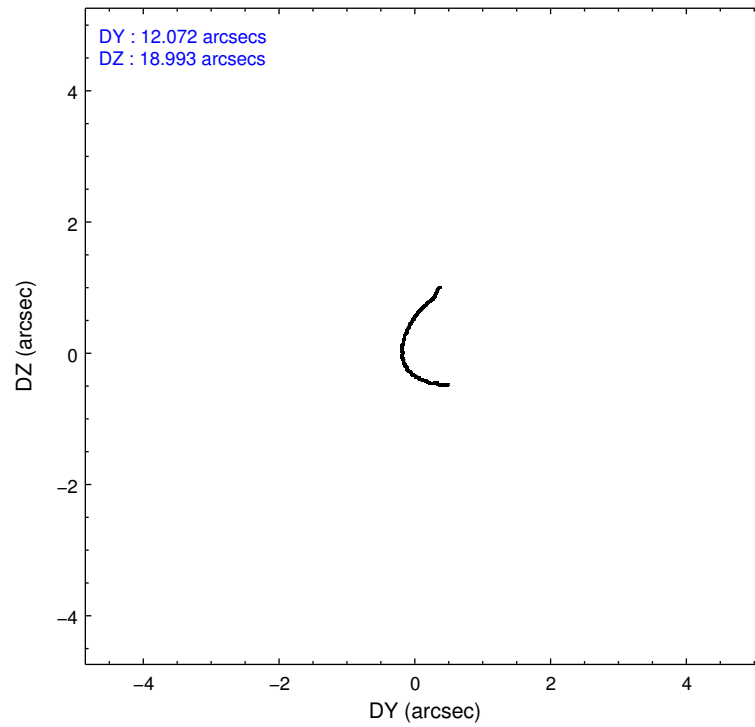
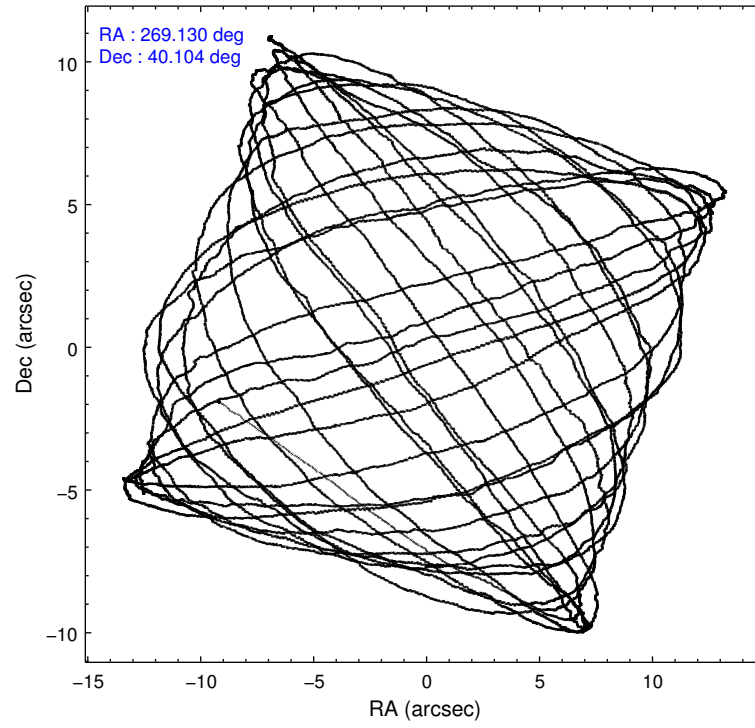
	ccd 0	ccd 1	ccd 2	ccd 3
level 1 events	72402	76640	81592	82932
rejected events	63411	66331	72766	71662
rejected %	87%	86%	89%	86%

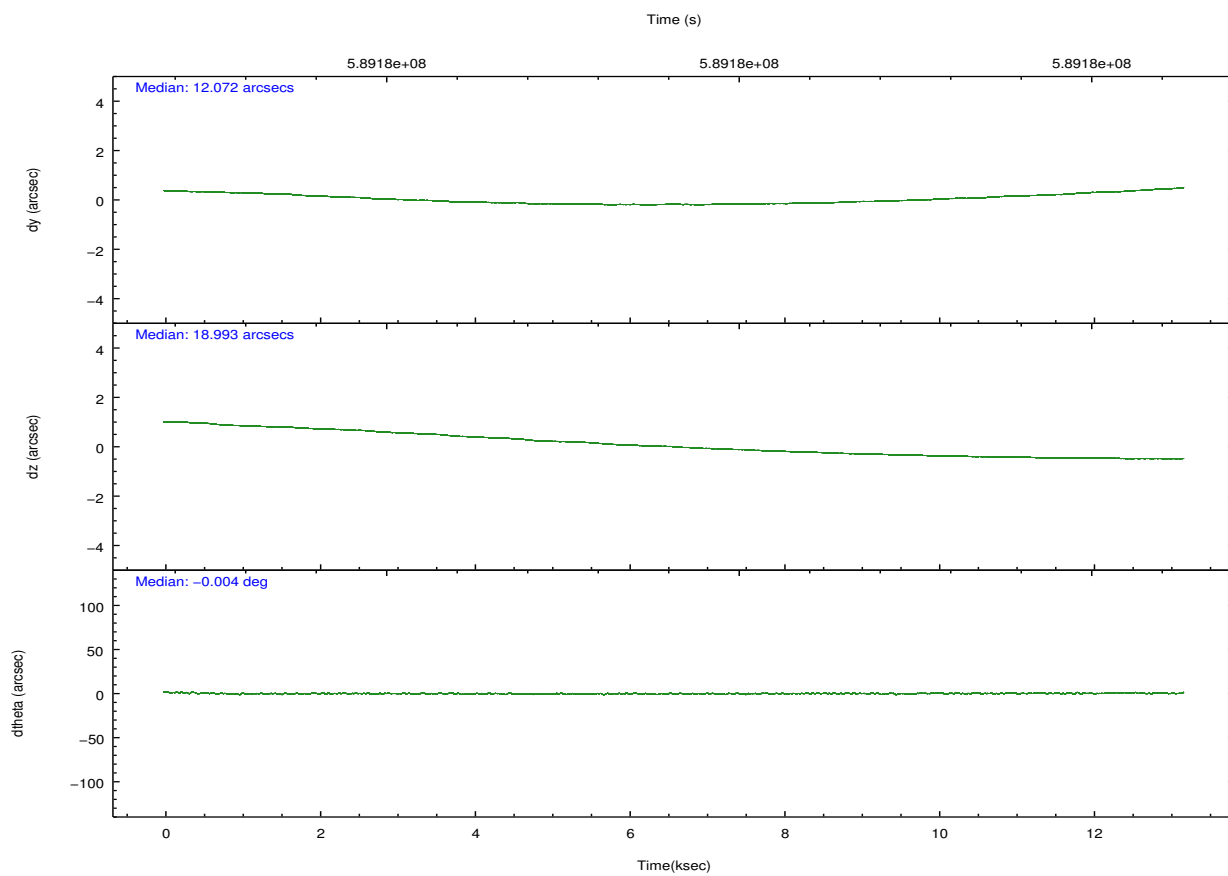
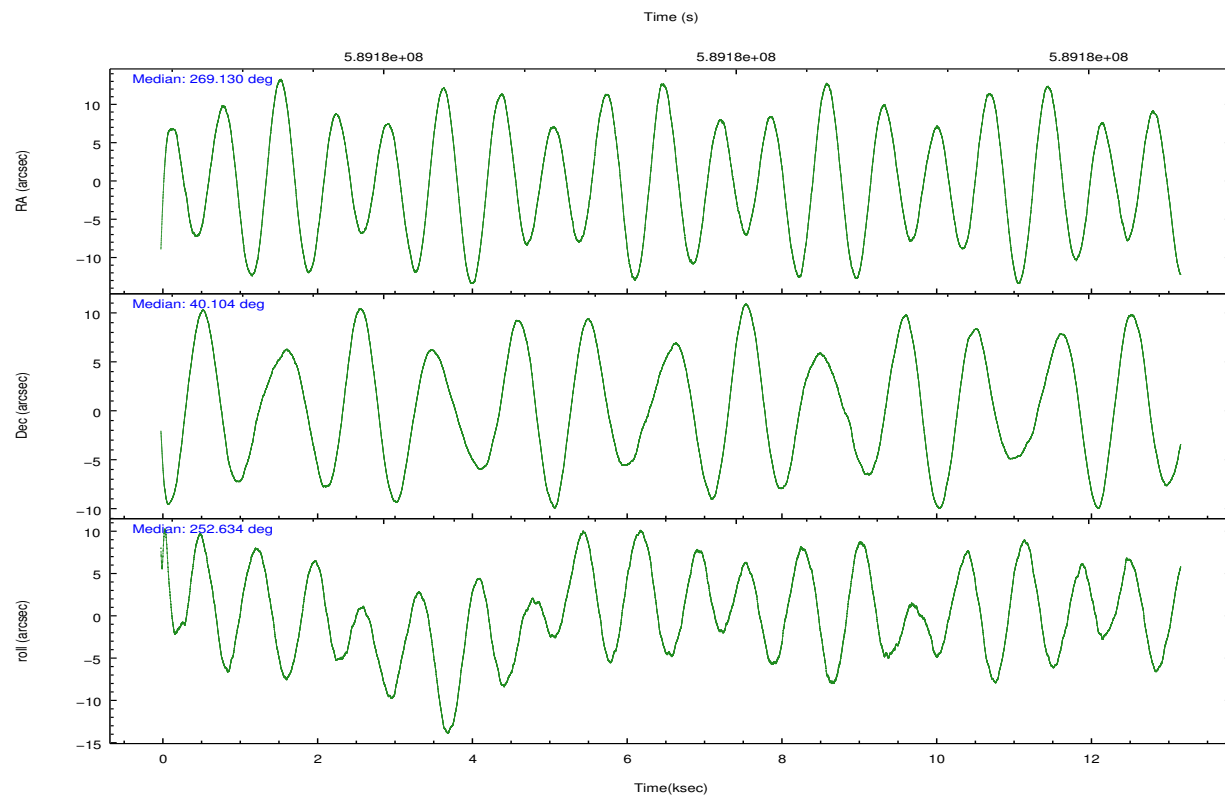
	ccd 0	ccd 1	ccd 2	ccd 3
grade 0 events	2956	3595	3072	5117
	4%	4%	3%	6%
grade 1 events	50	44	47	71
	0%	0%	0%	0%
grade 2 events	2345	2617	2336	2175
	3%	3%	2%	2%
grade 3 events	957	1003	842	1021
	1%	1%	1%	1%
grade 4 events	901	948	893	984
	1%	1%	1%	1%
grade 5 events	3501	3725	3248	4027
	4%	4%	3%	4%
grade 6 events	1837	2150	1686	1975
	2%	2%	2%	2%
grade 7 events	59855	62558	69468	67562
	82%	81%	85%	81%

2.2 Compared Parameters

Parameter	Planned	Actual	Parameter	Planned	Actual
Instrument	ACIS	ACIS	Obspar format version number	7	7
Detector	ACIS-0123	ACIS-0123	Obspar file type	PREDICTED	ACTUAL
Grating	NONE	NONE	Obspar update status	NONE	UPDATED
Data mode	VFAINT	VFAINT	Number of optional ACIS chips dropped	0	0
Observation mode	POINTING	POINTING	On-chip summing requested	N	N
[deg] Pointing RA	269.122416	269.1304598578973	Subarray requested	NONE	NONE
[deg] Pointing Dec	40.130739	40.10379209930471	Alternating exposures requested	N	N
[deg] Pointing Roll	252.435060	252.6385563848828	[s] Primary exposure time	0.000000	3.1
[mm] SIM focus pos	-0.782348	-0.7809083437167272			
[mm] SIM defocus	0	0.001439871863259334			
[mm] SIM translation stage pos	-233.592463	-233.5874344608287			
[mm] SIM translation stage offset	0	-0.005018542100998502			
[s] Observation start time (MET)	589172633.184000	589171694.0484101			
Observation start date	2016-09-02T03:02:45	2016-09-02T02:48:14			
[s] Observation end time (MET)	589185633.184000	589186884.03679			
Observation end date	2016-09-02T06:39:25	2016-09-02T07:01:24			
Read mode	TIMED	TIMED			

2.3 Aspect



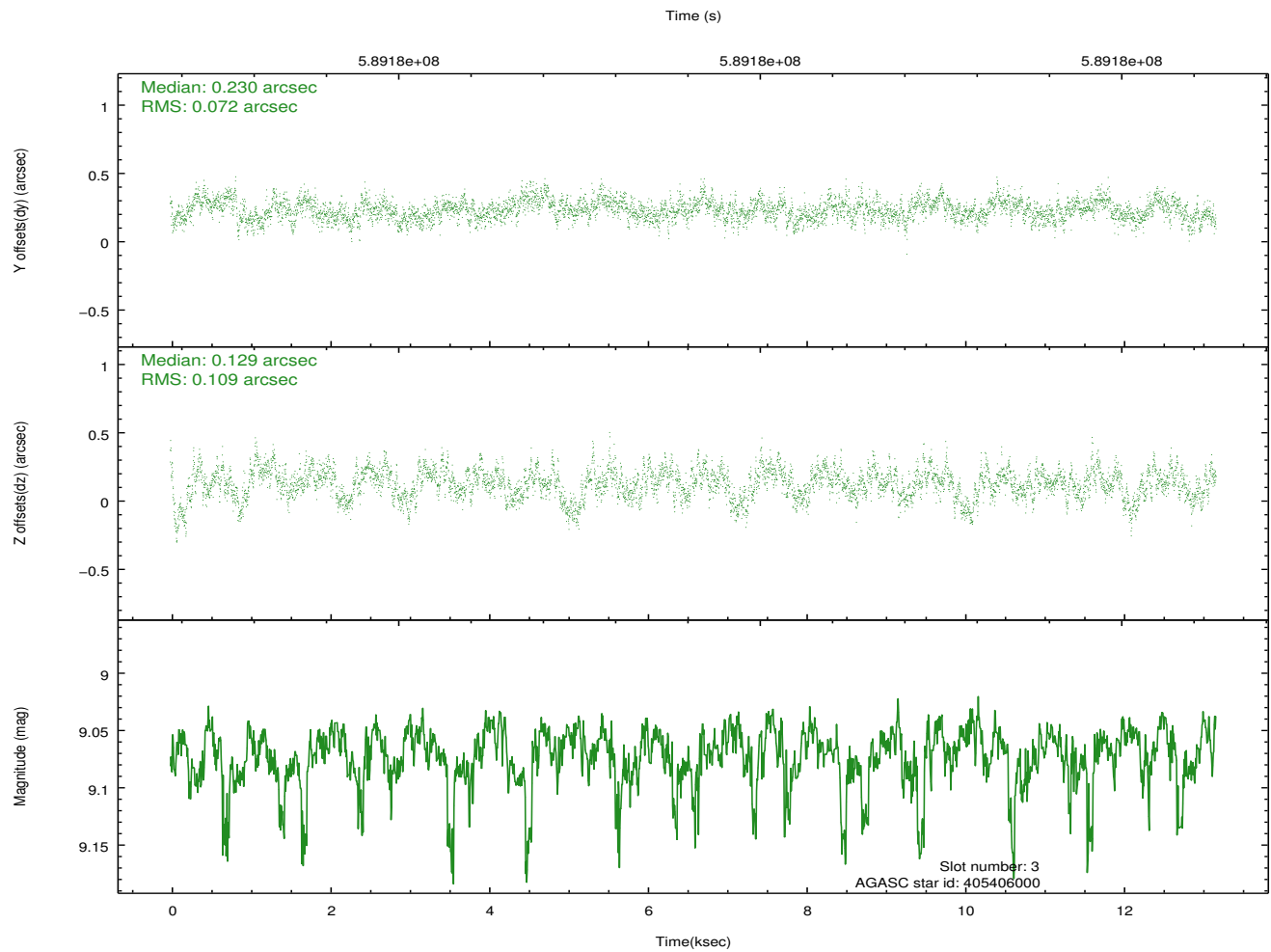
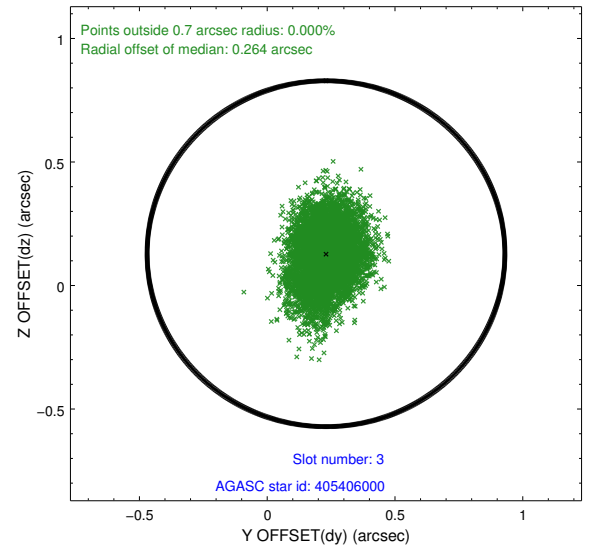
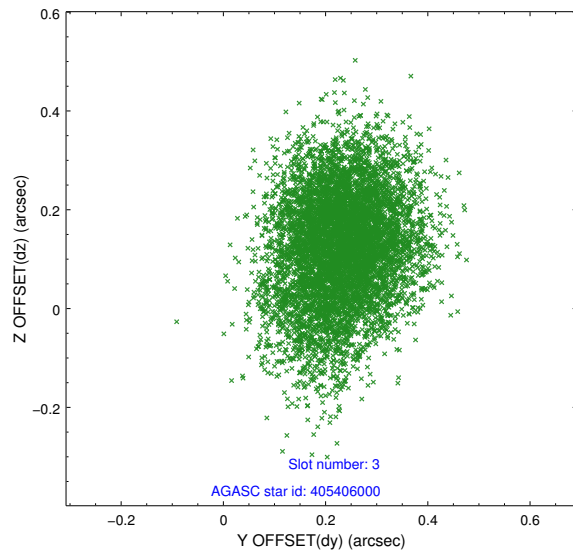


Slot Statistics

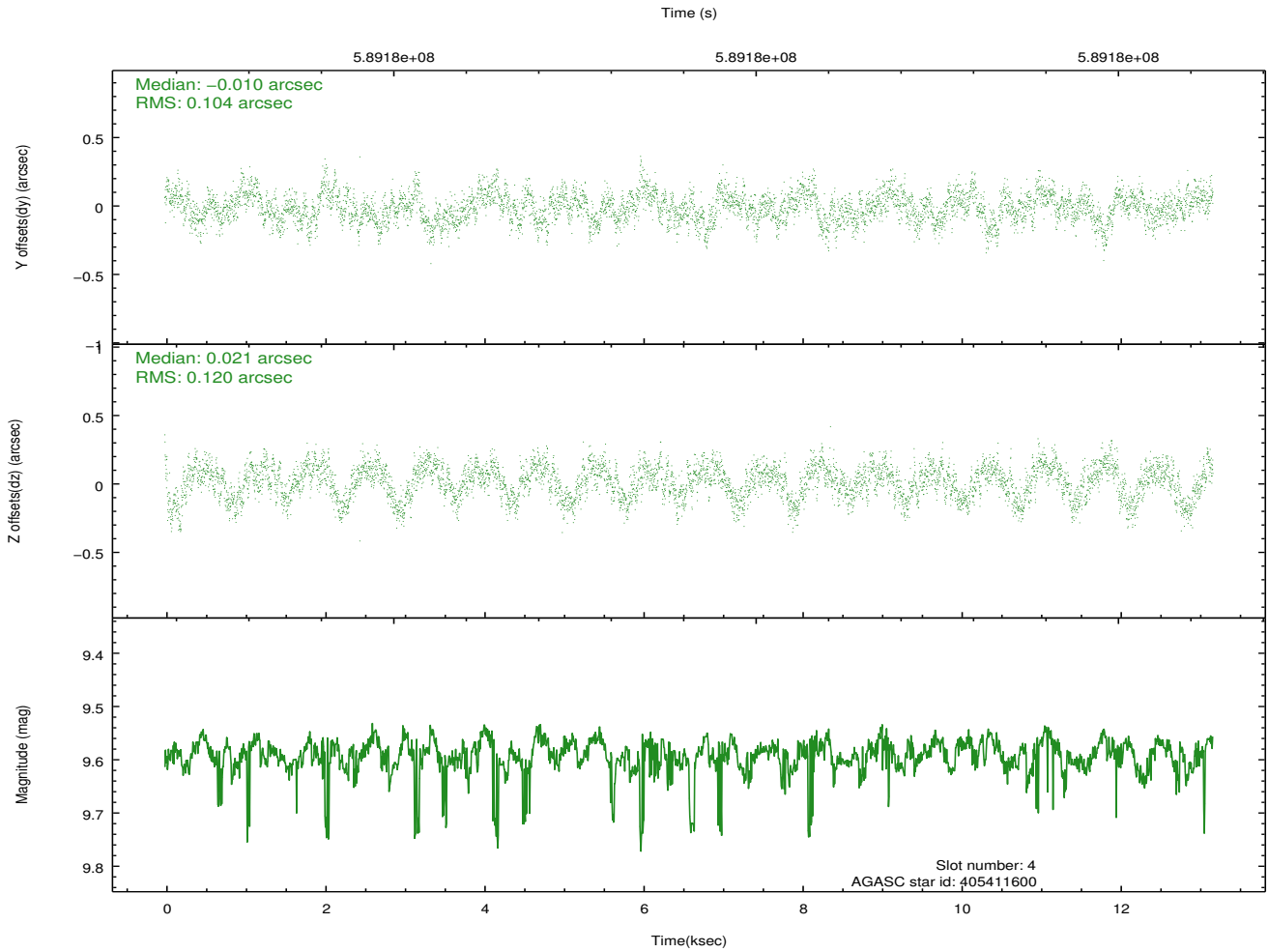
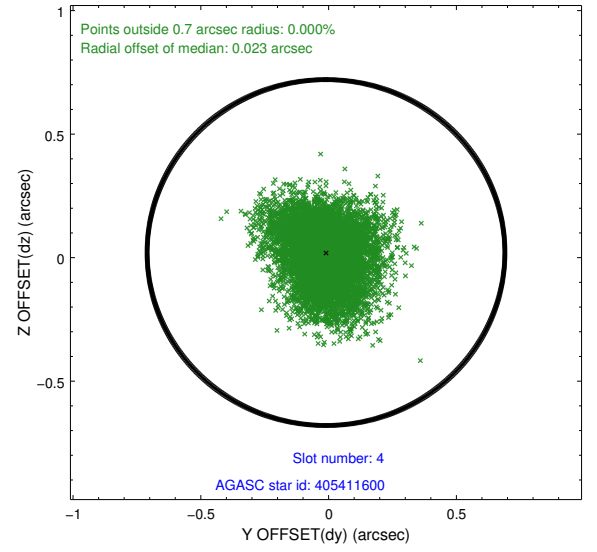
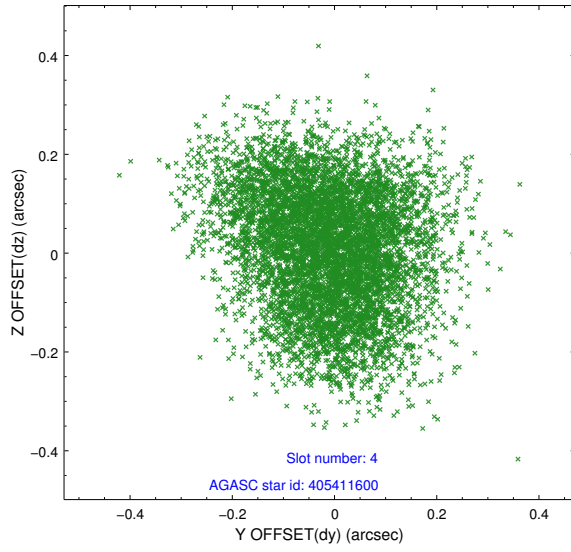
slot	status	used	id	mag	n_pts	med_dy	med_dz	dr1	dr2	ra	dec	mean_y	mean_z
0	FID		ACIS-I-1	7.07	3215	0.033	0.026	0.010	0.030	0.000000	0.000000	927.48	-842.75
1	FID		ACIS-I-5	7.07	3215	-0.257	0.031	0.008	0.014	0.000000	0.000000	-1820.78	1054.46
2	FID		ACIS-I-6	7.08	3215	0.134	0.012	0.011	0.031	0.000000	0.000000	392.64	1699.45
3	GUIDE	used	405406000	9.07	6424	0.230	0.129	0.138	0.230	268.540562	40.466753	-676.59	-1885.80
4	GUIDE	used	405411600	9.59	6424	-0.010	0.021	0.171	0.272	268.690974	39.797742	1500.41	-776.81
5	GUIDE	used	405413072	9.02	6425	-0.037	0.043	0.137	0.214	269.543745	40.112010	-287.43	1125.48
6	GUIDE	used	405413408	8.71	6421	-0.154	-0.084	0.119	0.191	268.710640	39.690772	1851.99	-610.07
7	GUIDE	used	405417432	9.31	6424	-0.029	-0.102	0.151	0.227	269.506959	39.494288	1860.54	1709.19

2.4 Star Slots

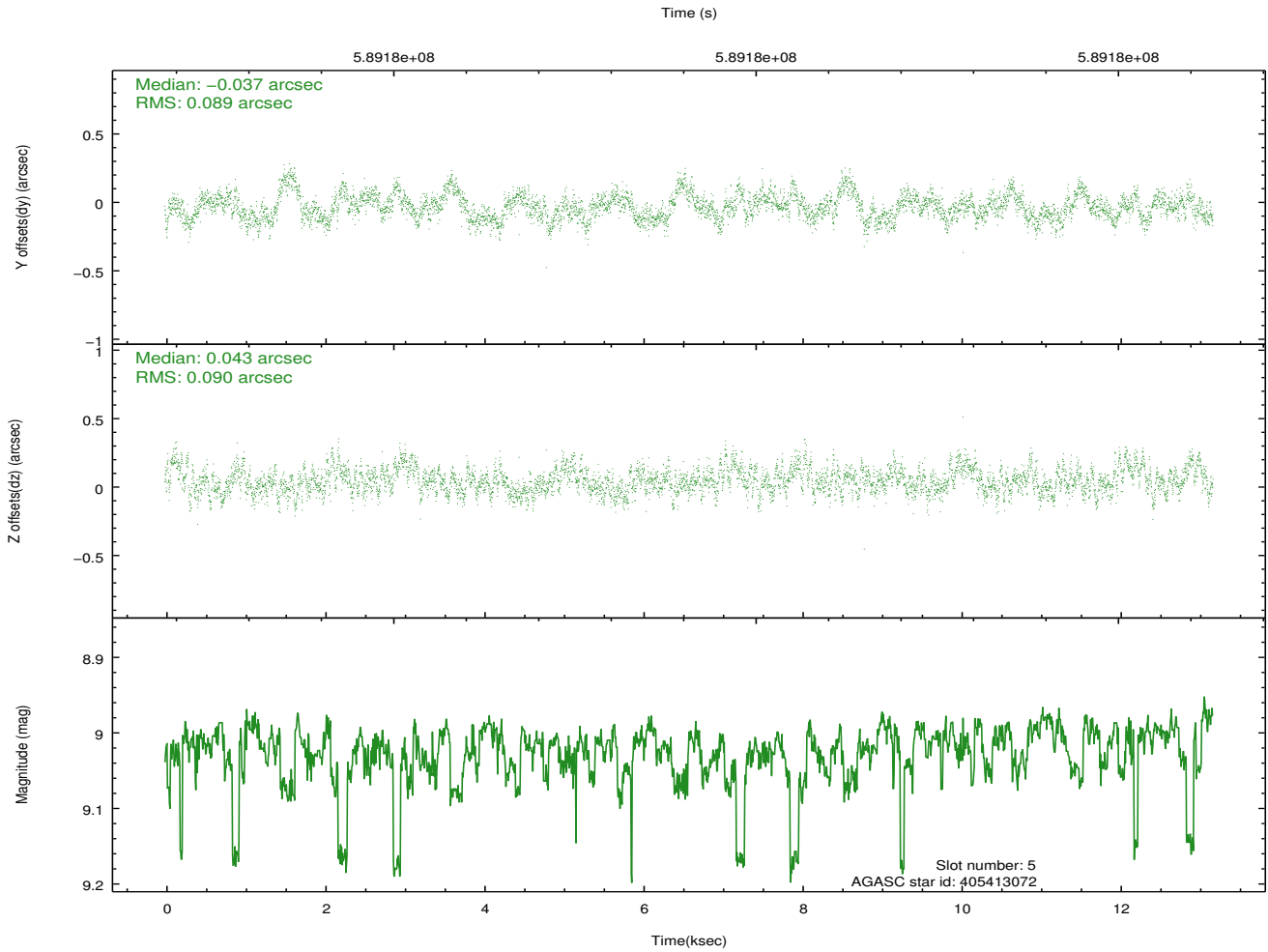
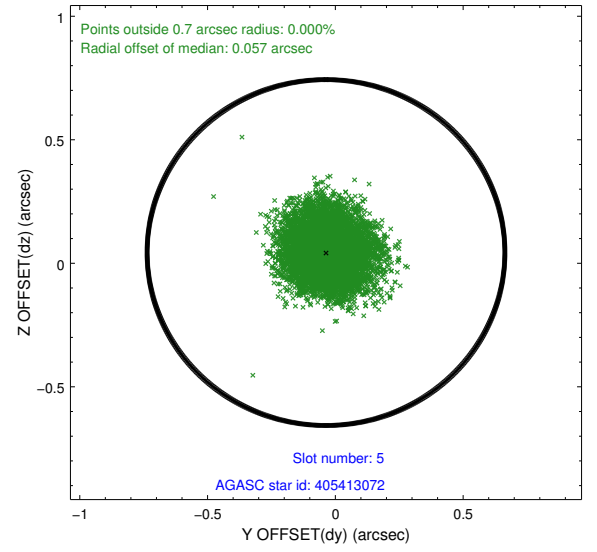
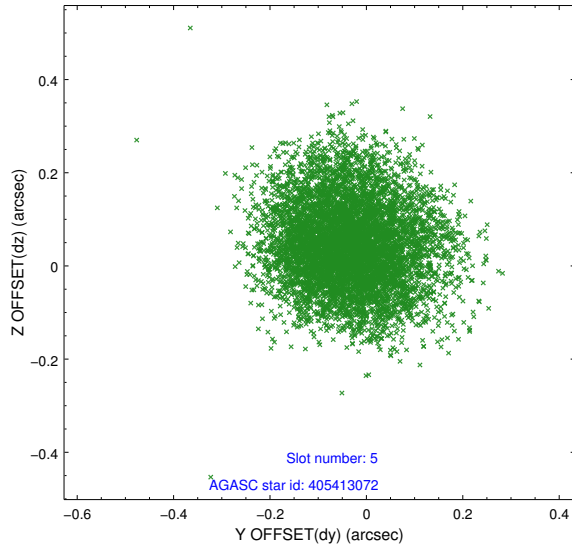
2.4.1 Slot 3



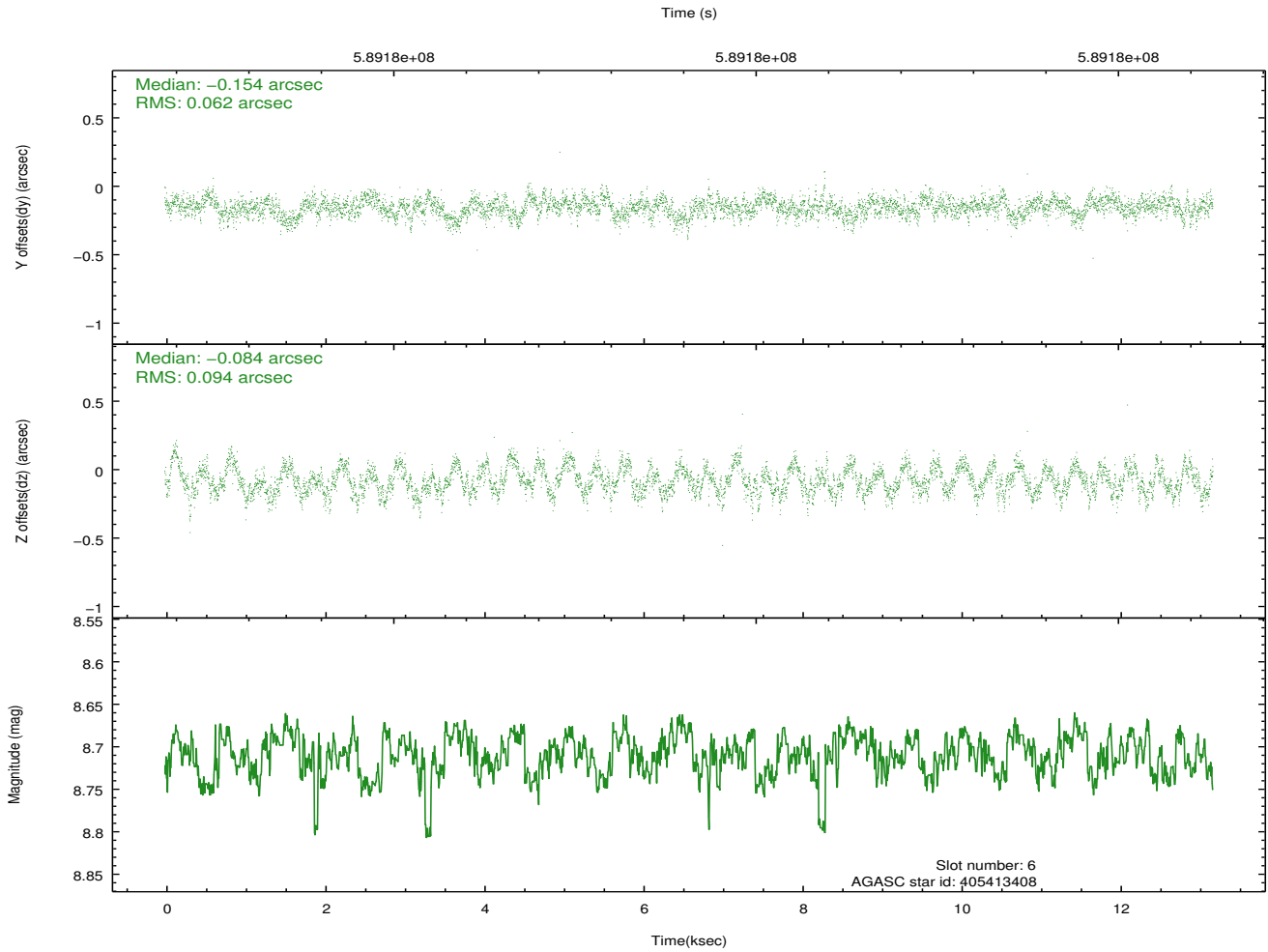
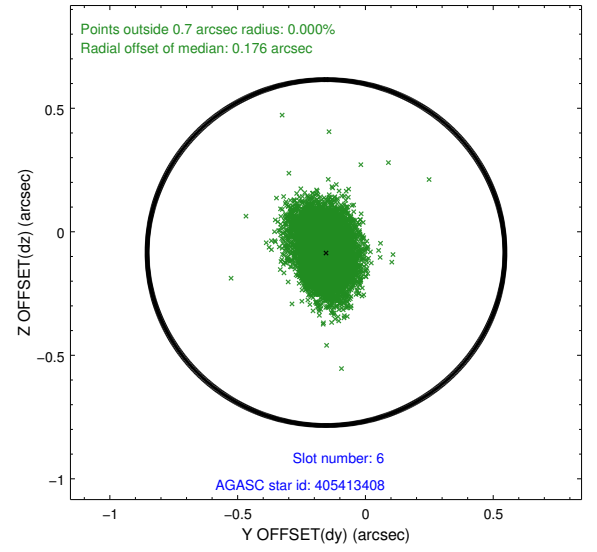
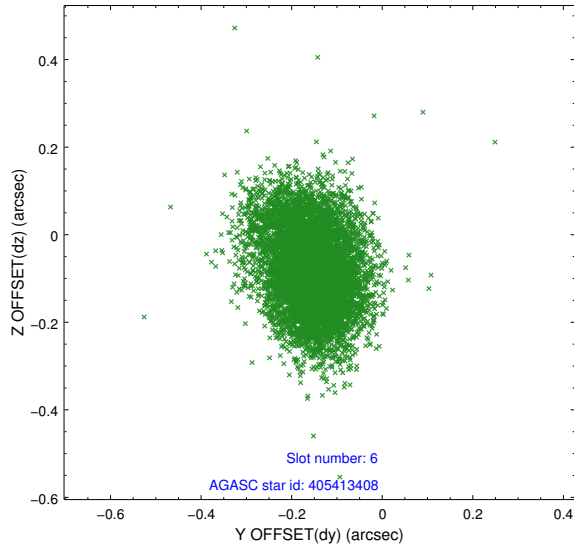
2.4.2 Slot 4



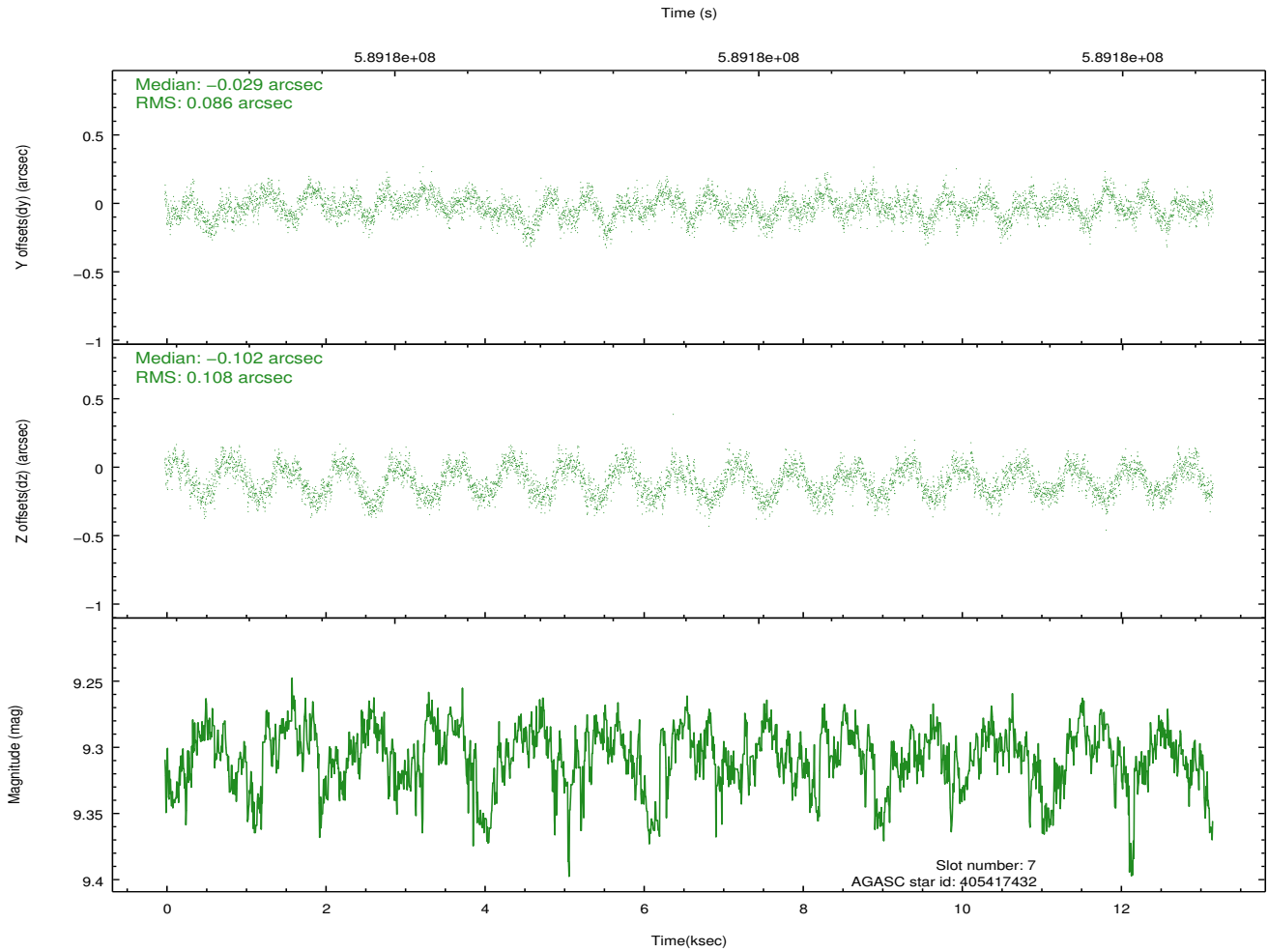
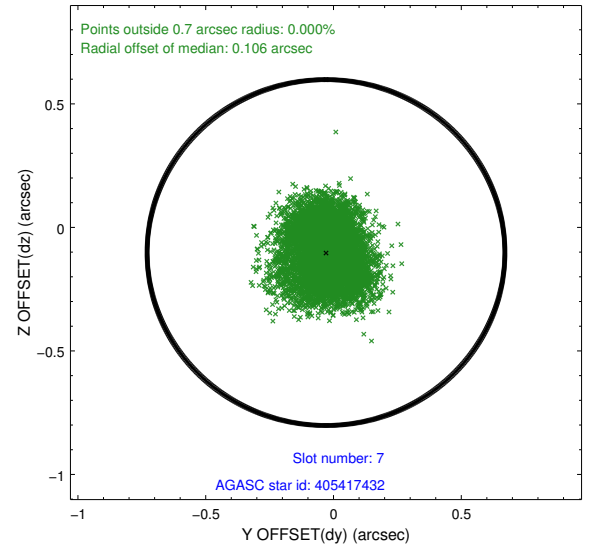
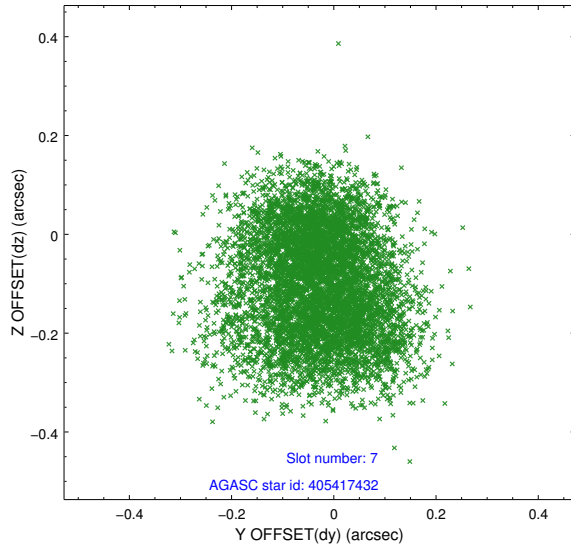
2.4.3 Slot 5



2.4.4 Slot 6

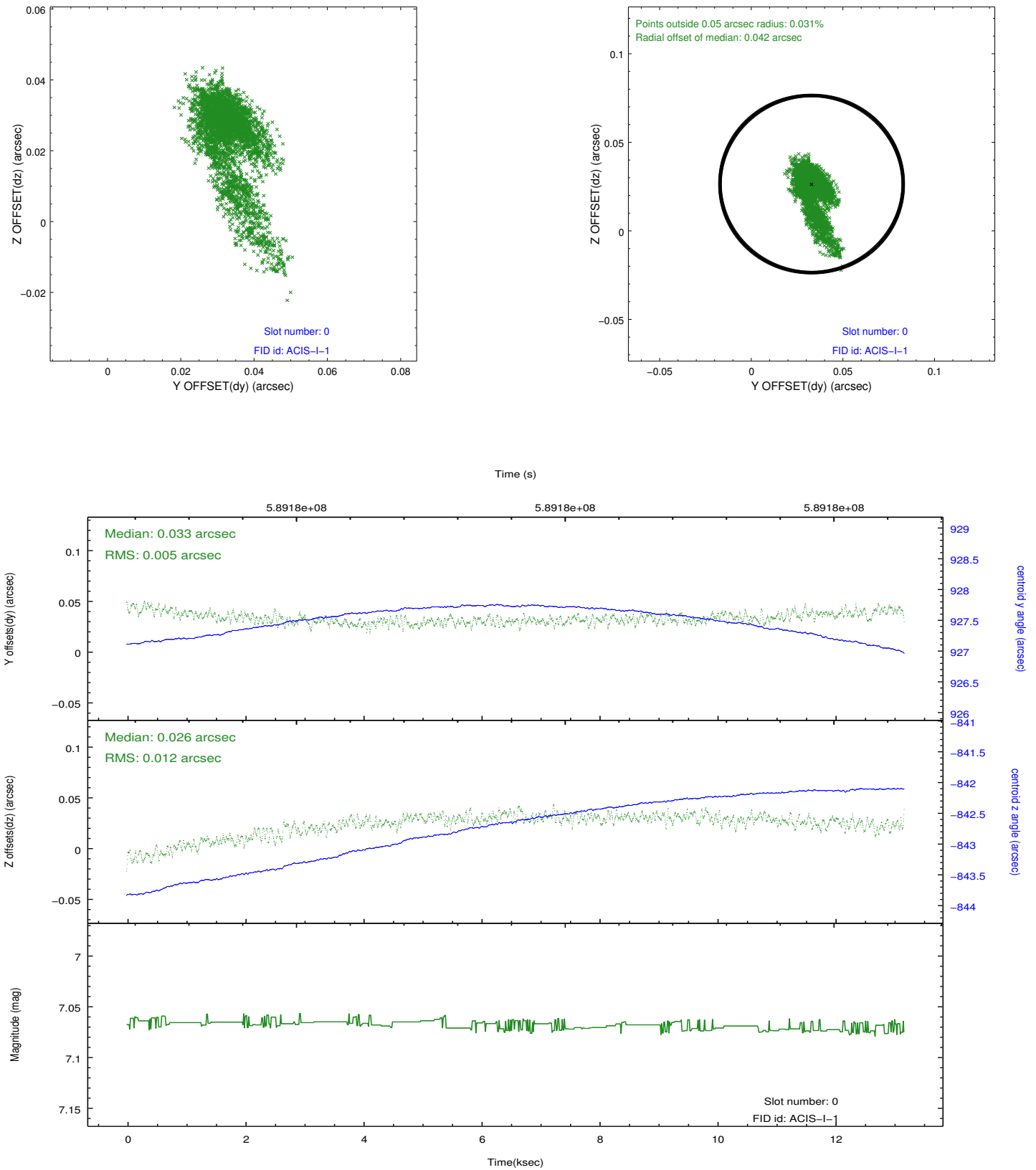


2.4.5 Slot 7

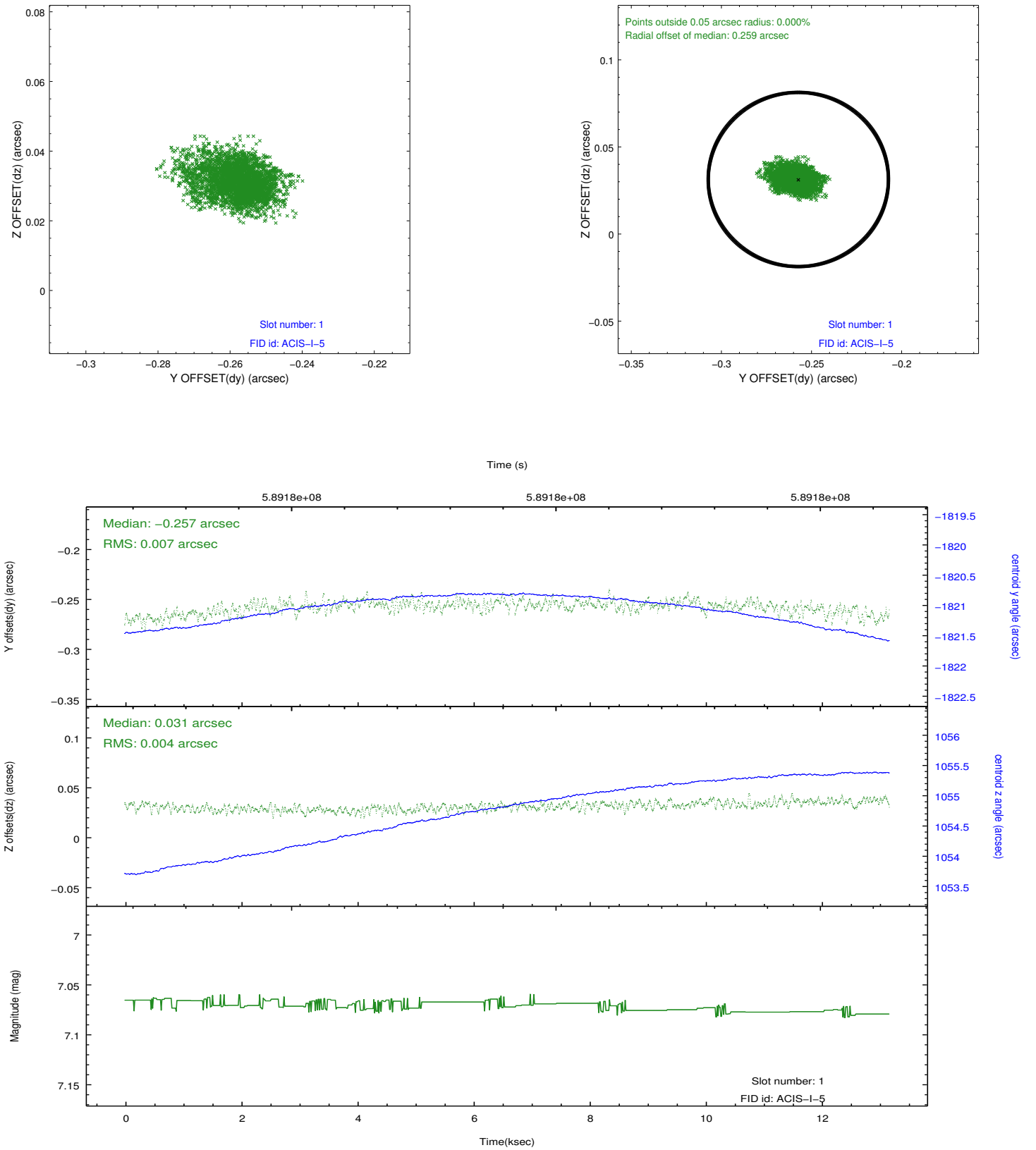


2.5 FID Slots

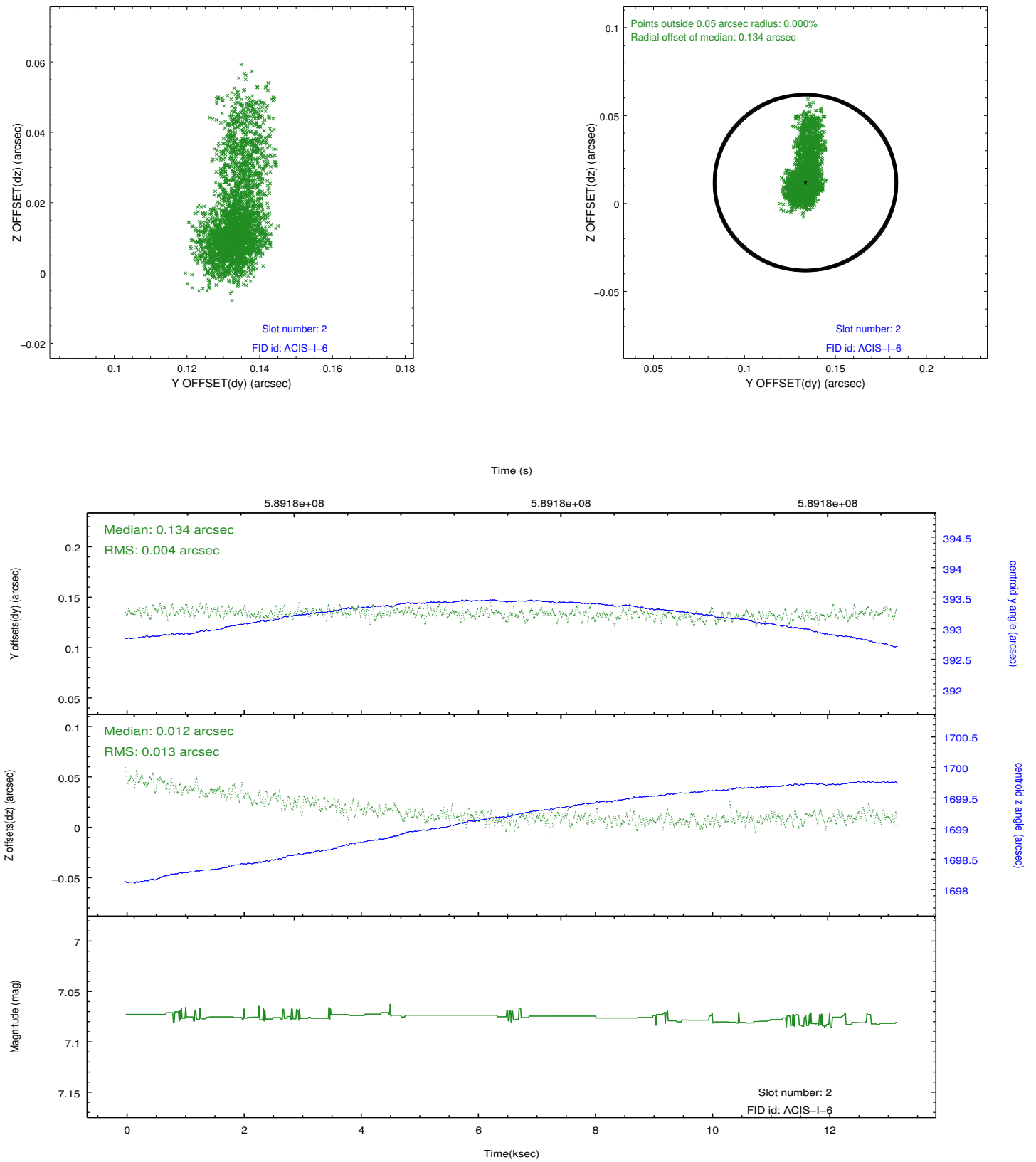
2.5.1 Slot 0



2.5.2 Slot 1



2.5.3 Slot 2



A Summary

A.1 Status

V&V Scientist	Beth Sundheim
V&V Date (YYYY-MM-DD)	2016.09.02
V&V Edition	1
V&V Disposition and Status	OK
V&V Charge Time	12.789459059358

A.2 Comments