

V&V Reference Report

L2 ASCDS Version : 10.4.3

Observation 18221 - L2 Version 2
Chandra X-Ray Center

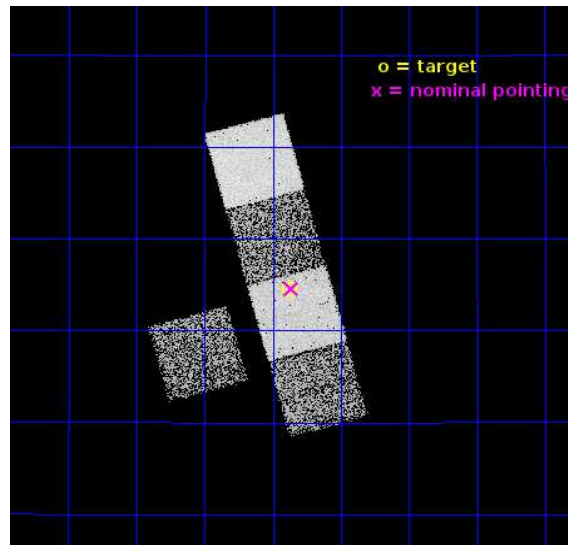
L2 Processing Date : Dec 22 2015

Contents

1	Front	2
2	OBI	3
2.1	OBI	3
2.1.1	Images	3
2.1.2	Bias	3
2.1.3	Parameters	4
2.1.4	Events	4
2.2	Compared Parameters	5
2.3	Aspect	6
2.4	Star Slots	9
2.4.1	Slot 3	9
2.4.2	Slot 4	10
2.4.3	Slot 5	11
2.4.4	Slot 7	12
2.5	FID Slots	13
2.5.1	Slot 0	13
2.5.2	Slot 1	14
2.5.3	Slot 2	15
A	Summary	16
A.1	Status	16
A.2	Comments	16

1 Front

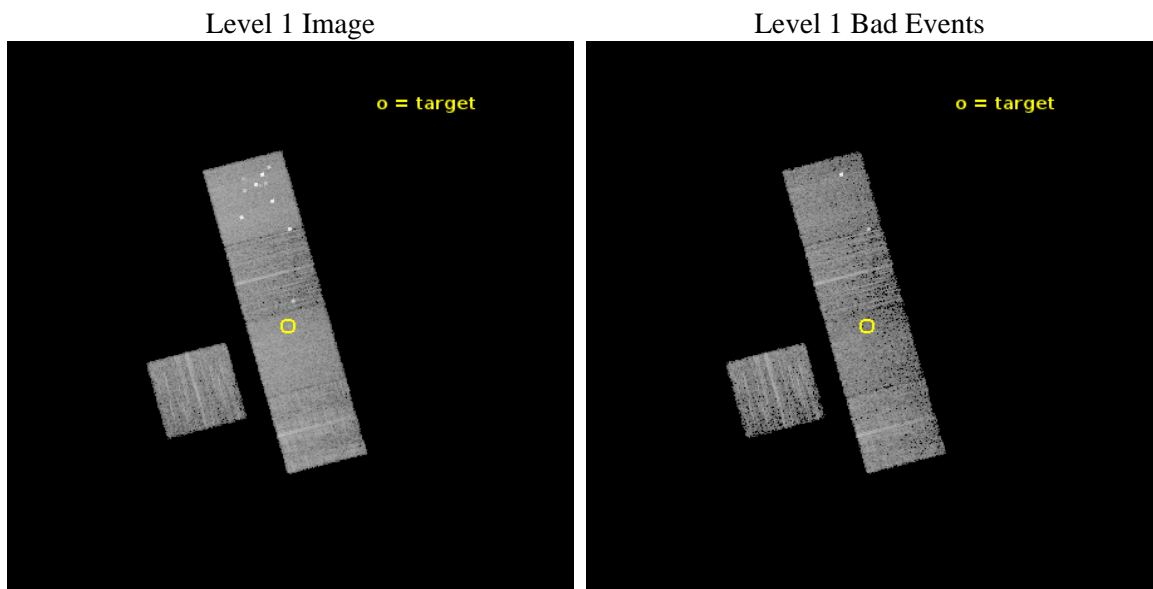
seq_num	801549	Sequence number
obs_id	18221	Observation id
title	Searching for Fossil Group Progenitors Via Strong Gravitational Lensing	Proposal title
observer	Mr. Lucas Johnson	Principal investigator
object	CSWA 4	Source name
dtcycle	0	
cycle	P	events from which exps? Prim/Second/Both
ra_targ	135.343333	Observer's specified target RA [deg]
dec_targ	18.242306	Observer's specified target Dec [deg]
ra_nom	135.34082004301	Nominal RA [deg]
dec_nom	18.24284920081	Nominal Dec [deg]
roll_nom	74.883756740314	Nominal Roll [deg]
revision	2	Processing version of data
ontime	6775.2567763329	Sum of GTIs [s]
livetime	6686.7330586786	Livetime [s]
ontime3	6775.1336563826	Sum of GTIs [s]
ontime5	6775.2157363892	Sum of GTIs [s]
ontime6	6775.1746963263	Sum of GTIs [s]
ontime7	6775.2567763329	Sum of GTIs [s]
ontime8	6765.6694762707	Sum of GTIs [s]
l2events	59176	Number of level 2 events



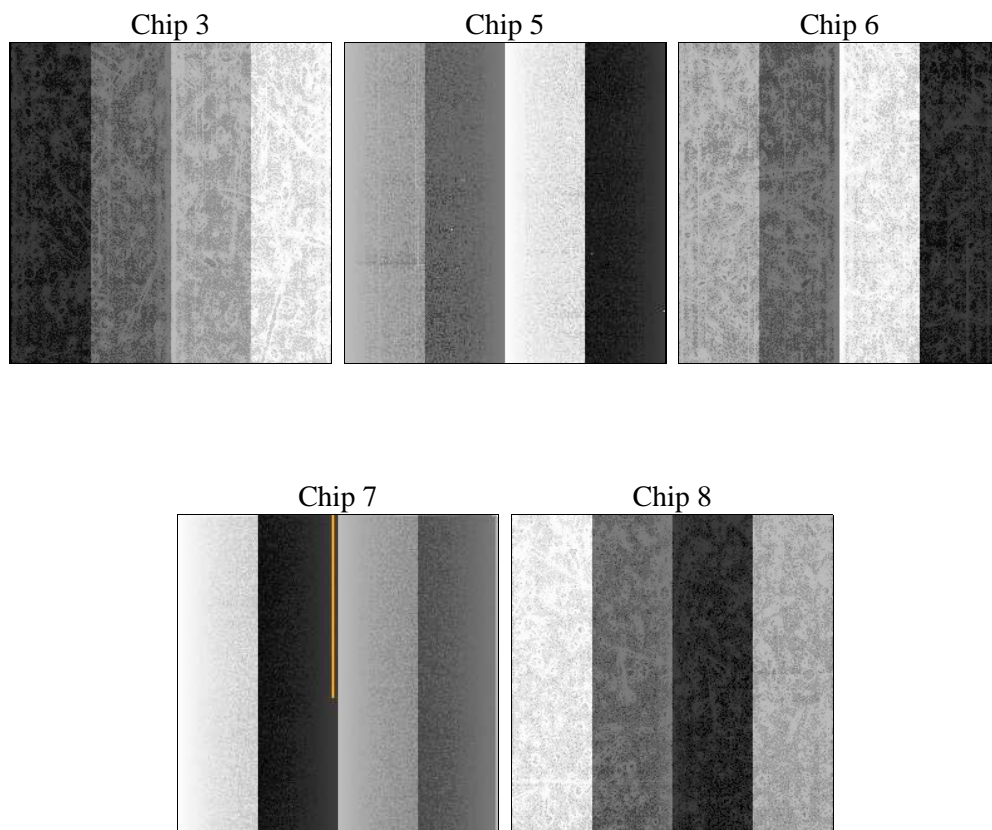
2 OBI

2.1 OBI

2.1.1 Images



2.1.2 Bias



2.1.3 Parameters

obi_num	0	Obi number	sched_exp_time	7000.000000	[s] Scheduled observation exposure time
ascdsver	10.4.3	Processing system revision	ontime	6775.2567763329	Sum of GTIs [s]
caldsver	4.7.0	 	ontime3	6775.1336563826	Sum of GTIs [s]
date	2015-12-23T02:05:30	Date and time of file creation	ontime5	6775.2157363892	Sum of GTIs [s]
revision	2	Processing version of data	ontime6	6775.1746963263	Sum of GTIs [s]
			ontime7	6775.2567763329	Sum of GTIs [s]
			ontime8	6765.6694762707	Sum of GTIs [s]
			l1events	250510	Number of level 1 events

2.1.4 Events

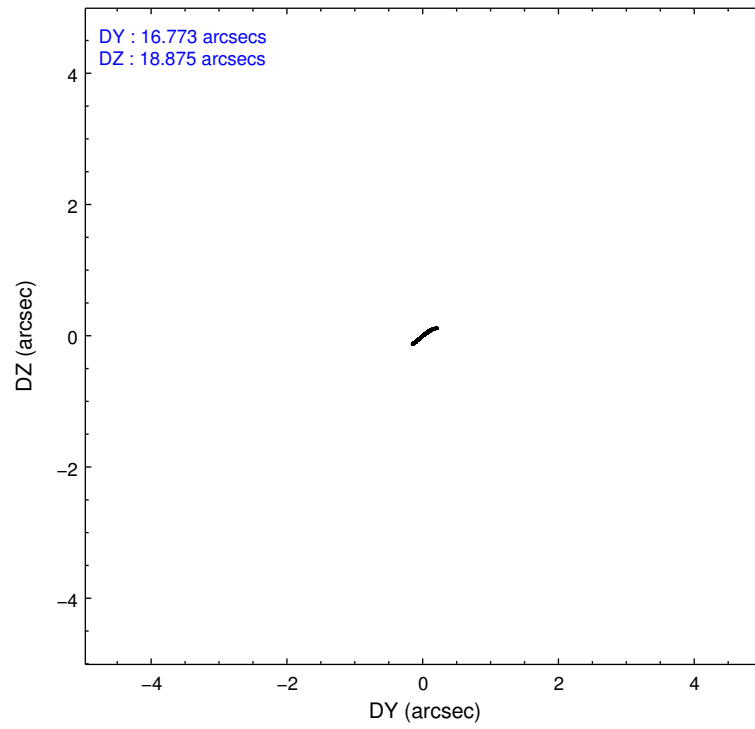
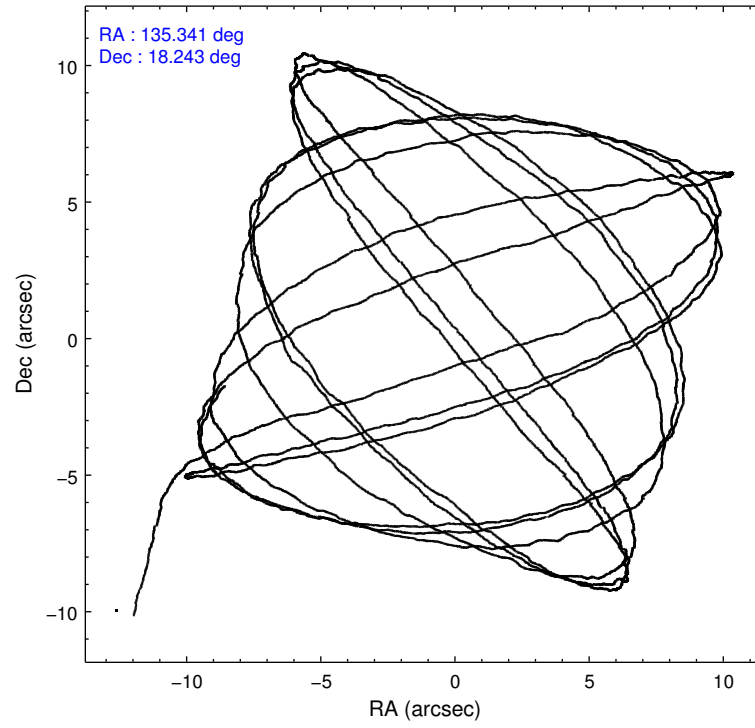
	ccd 3	ccd 5	ccd 6	ccd 7	ccd 8
level 1 events	37824	73224	39690	50256	49516
rejected events	33943	34832	34751	29029	37965
rejected %	89%	47%	87%	57%	76%

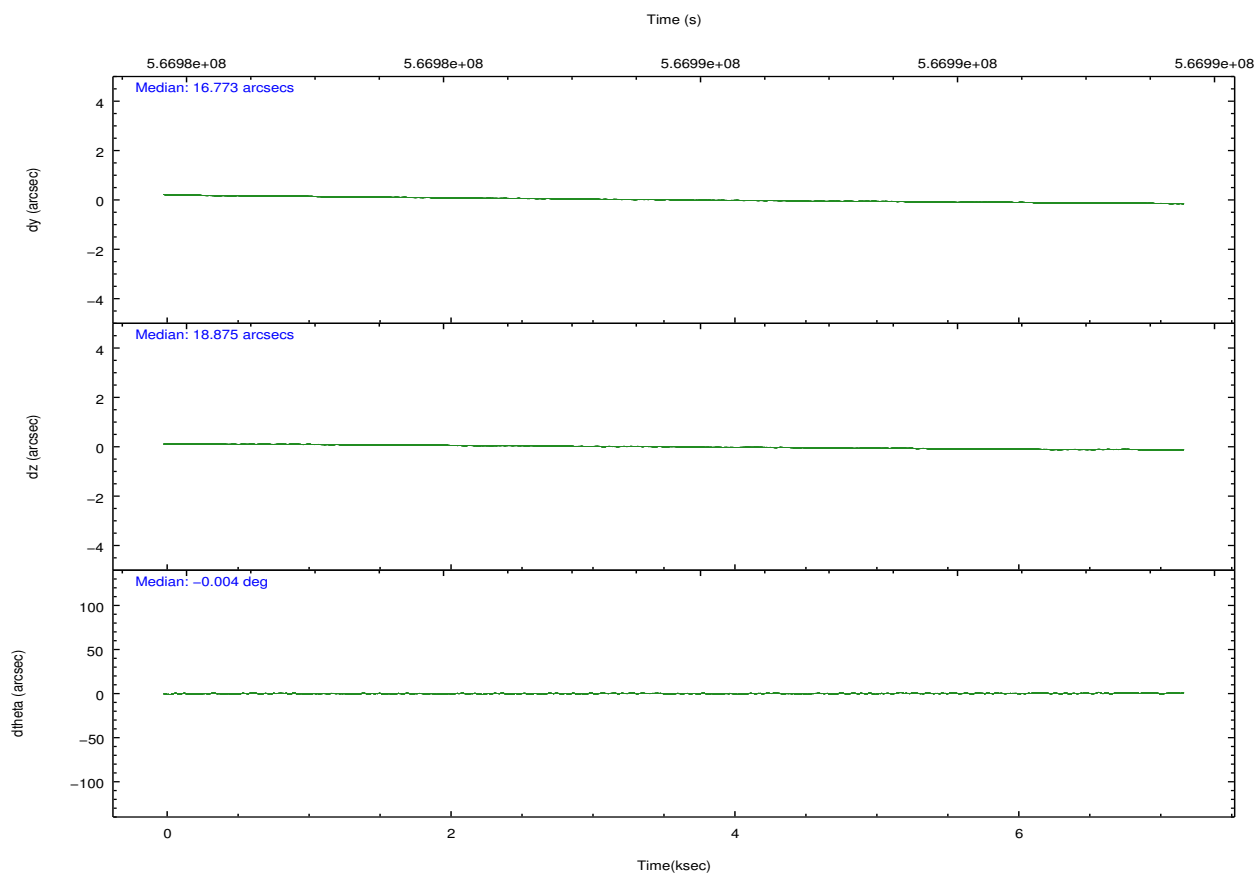
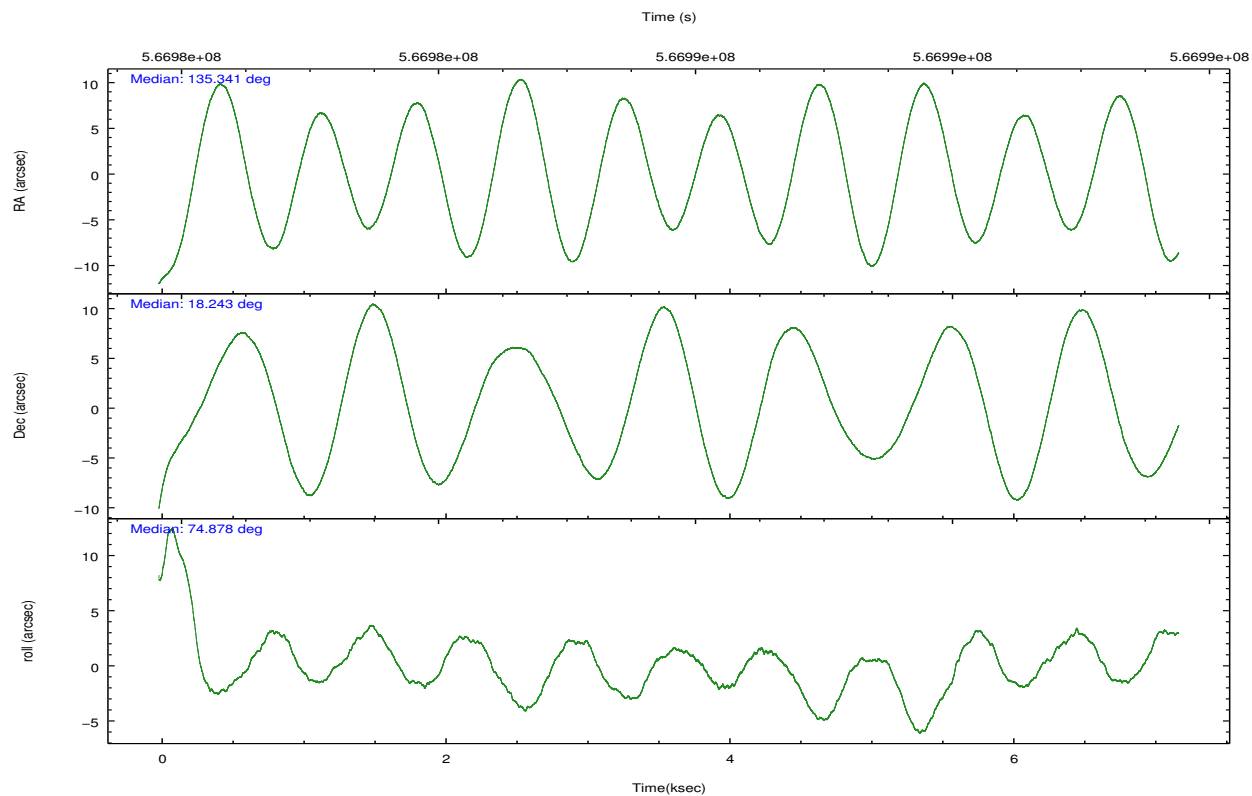
	ccd 3	ccd 5	ccd 6	ccd 7	ccd 8
grade 0 events	1308	9446	1844	1793	3240
	3%	12%	4%	3%	6%
grade 1 events	10	270	23	51	40
	0%	0%	0%	0%	0%
grade 2 events	855	9913	1147	4477	2881
	2%	13%	2%	8%	5%
grade 3 events	408	1086	413	1597	1250
	1%	1%	1%	3%	2%
grade 4 events	443	1137	437	1563	1143
	1%	1%	1%	3%	2%
grade 5 events	1749	4364	1744	4852	2699
	4%	5%	4%	9%	5%
grade 6 events	868	16831	1102	11809	3067
	2%	22%	2%	23%	6%
grade 7 events	32183	30177	32980	24114	35196
	85%	41%	83%	47%	71%

2.2 Compared Parameters

Parameter	Planned	Actual	Parameter	Planned	Actual
Instrument	ACIS	ACIS	Obspar format version number	7	7
Detector	ACIS-35678	ACIS-35678	Obspar file type	PREDICTED	ACTUAL
Grating	NONE	NONE	Obspar update status	NONE	UPDATED
Data mode	VFAINT	VFAINT	CCD I0 on	N	N
Observation mode	POINTING	POINTING	CCD I1 on	N	N
[deg] Pointing RA	135.348684	135.3408200430095	CCD I2 on	N	N
[deg] Pointing Dec	18.216455	18.24284920080996	CCD I3 on	Y	Y
[deg] Pointing Roll	74.724673	74.88375674031357	CCD S0 on	N	N
[mm] SIM focus pos	-0.684267	-0.6828225247311905	CCD S1 on	Y	Y
[mm] SIM defocus	0	0.001444936568705701	CCD S2 on	Y	Y
[mm] SIM translation stage pos	-190.132523	-190.1400660498719	CCD S3 on	Y	Y
[mm] SIM translation stage offset	0	0.00754346686406393	CCD S4 on	O1	Y
[s] Observation start time (MET)	566982369.184000	566981459.64494	CCD S5 on	N	N
Observation start date	2015-12-20T07:05:01	2015-12-20T06:50:59	Number of optional ACIS chips dropped	0	0
[s] Observation end time (MET)	566989369.184000	566989866.69542	On-chip summing requested	N	N
Observation end date	2015-12-20T09:01:41	2015-12-20T09:11:06	Subarray requested	NONE	NONE
Read mode	TIMED	TIMED	Alternating exposures requested	N	N
			[s] Primary exposure time	0.000000	3.1

2.3 Aspect



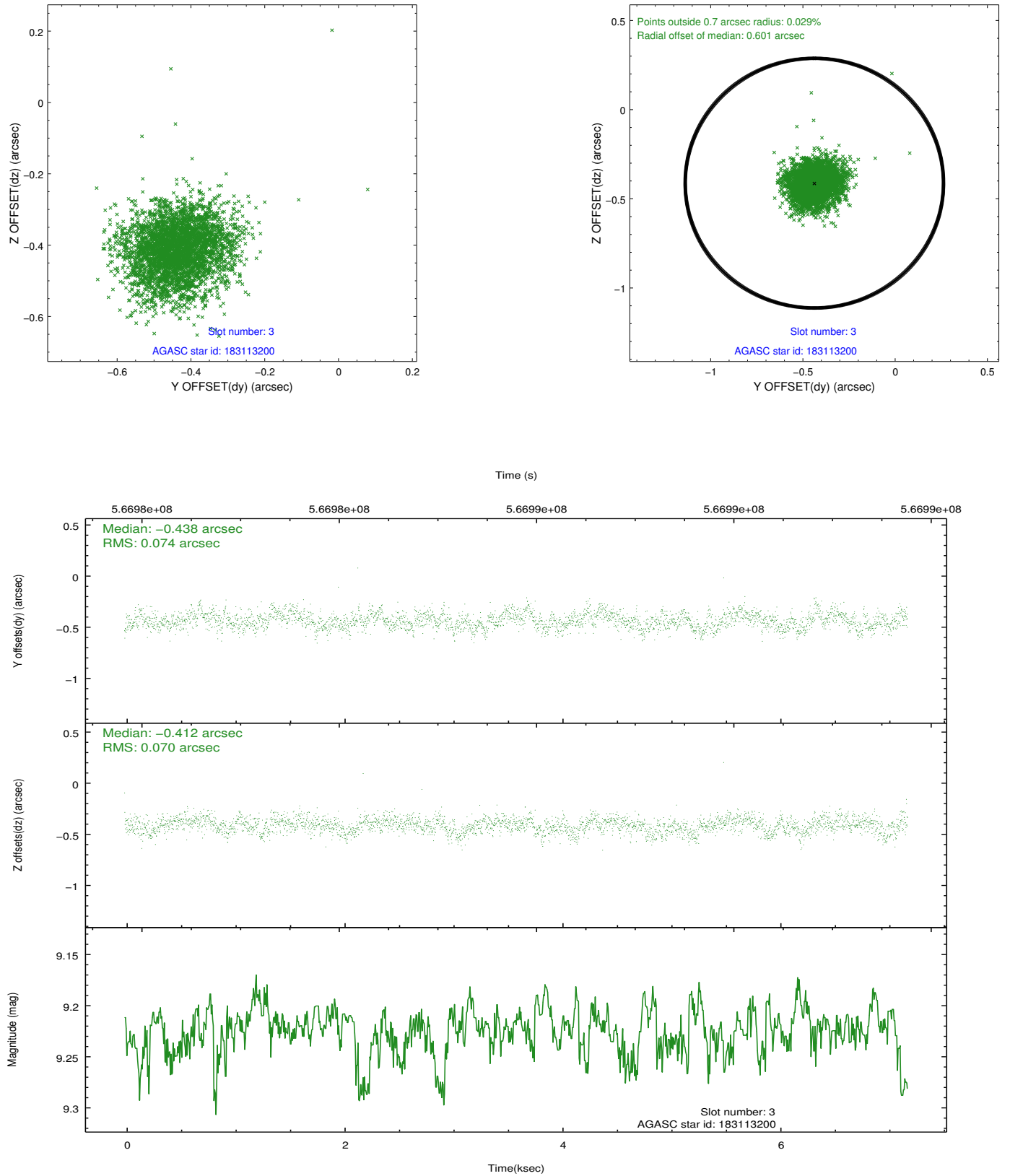


Slot Statistics

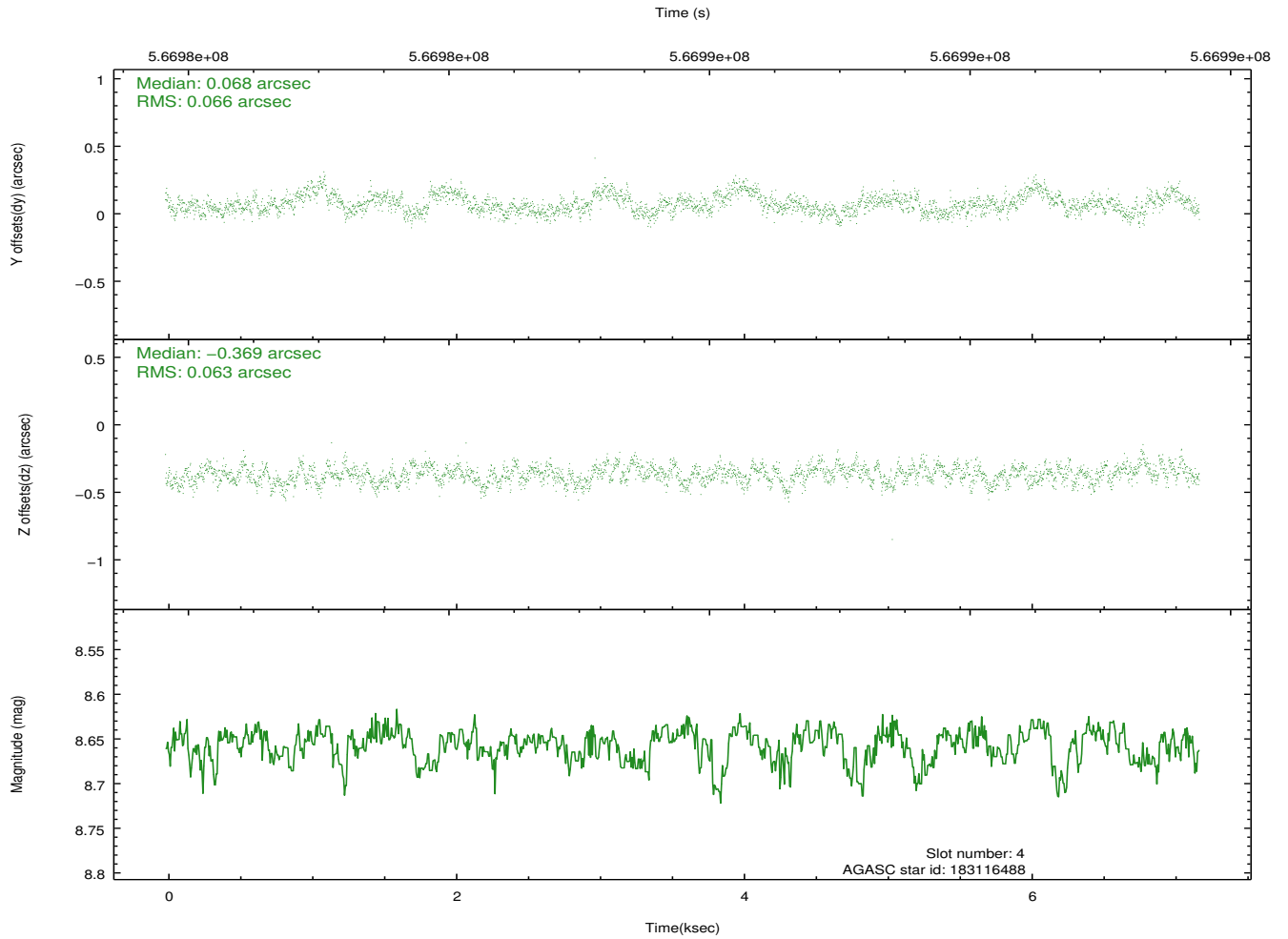
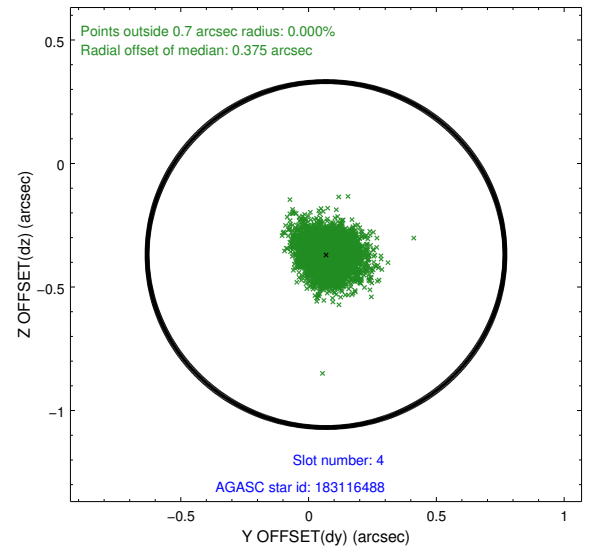
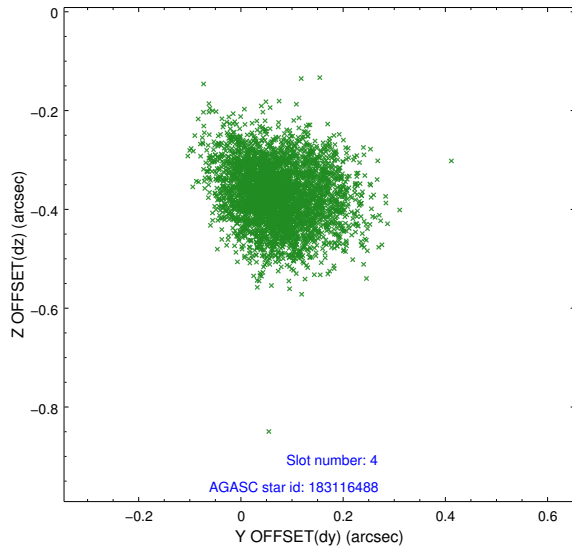
slot	status	used	id	mag	n_pts	med_dy	med_dz	dr1	dr2	ra	dec	mean_y	mean_z
0	FID		ACIS-S-2	7.14	1753	-0.183	-0.146	0.007	0.011	0.000000	0.000000	-769.97	-1740.50
1	FID		ACIS-S-4	7.24	1753	0.449	0.127	0.006	0.011	0.000000	0.000000	2143.56	167.43
2	FID		ACIS-S-5	7.26	1753	-0.298	0.028	0.007	0.012	0.000000	0.000000	-1821.92	161.90
3	GUIDE	used	183113200	9.22	3503	-0.438	-0.412	0.107	0.173	135.070649	18.931179	2233.18	1591.40
4	GUIDE	used	183116488	8.66	3506	0.068	-0.369	0.097	0.155	134.794699	18.060218	-1038.61	1681.36
5	GUIDE	used	183118168	9.00	3506	0.409	0.630	0.102	0.167	135.786773	17.573737	-1834.58	-2057.59
6	OMITTED			0.00	0	0.000	0.000	0.000	0.000	0.000000	0.000000	0.00	0.00
7	GUIDE	used	183121672	8.40	3505	-0.045	0.154	0.108	0.184	135.968829	18.685863	2189.93	-1594.27

2.4 Star Slots

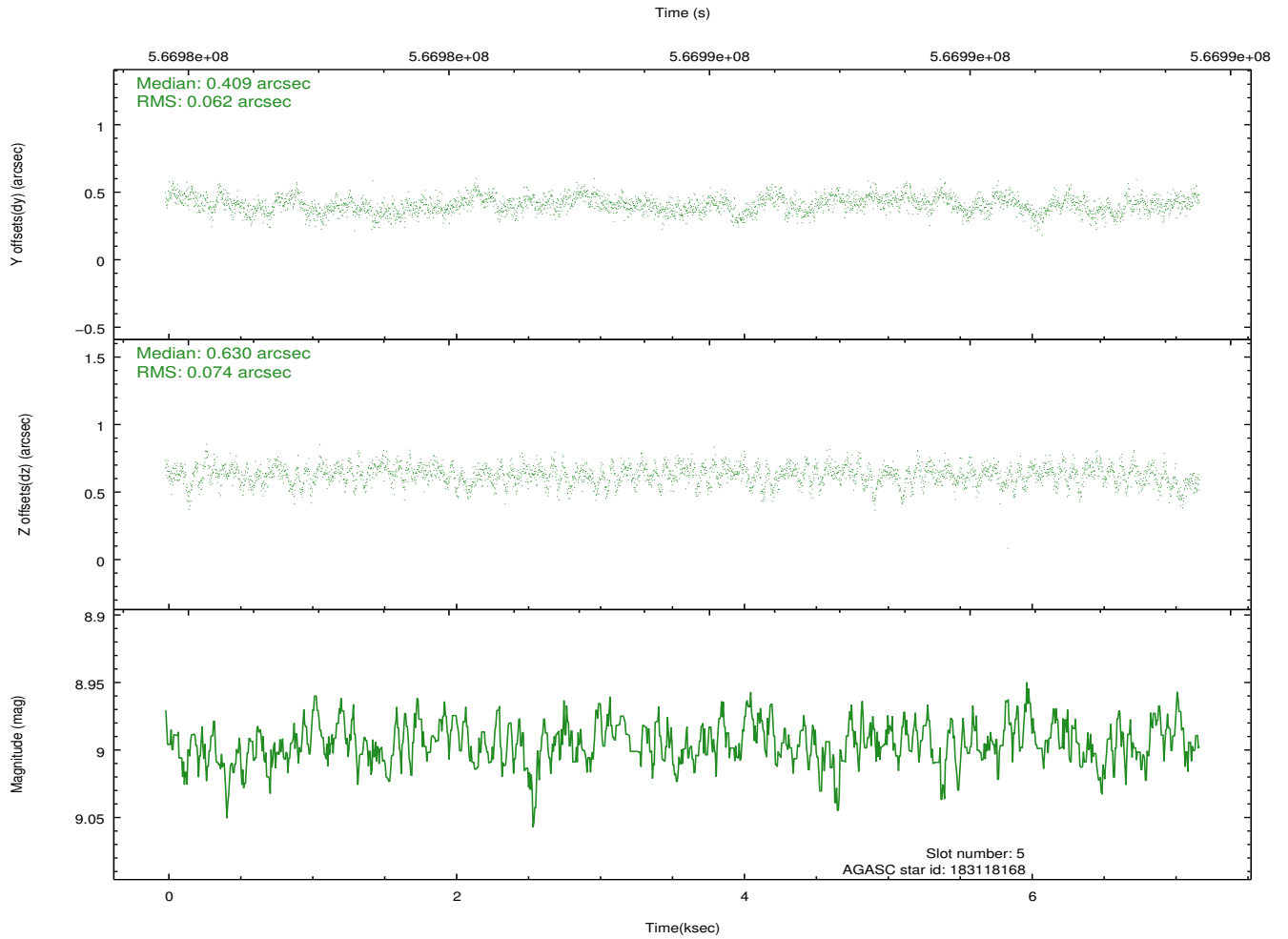
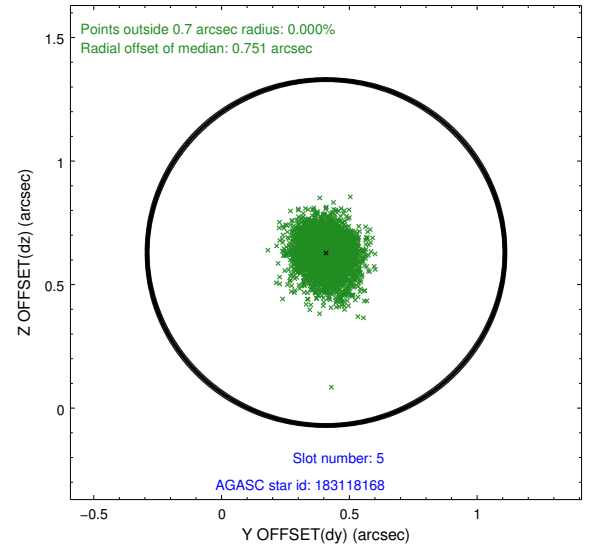
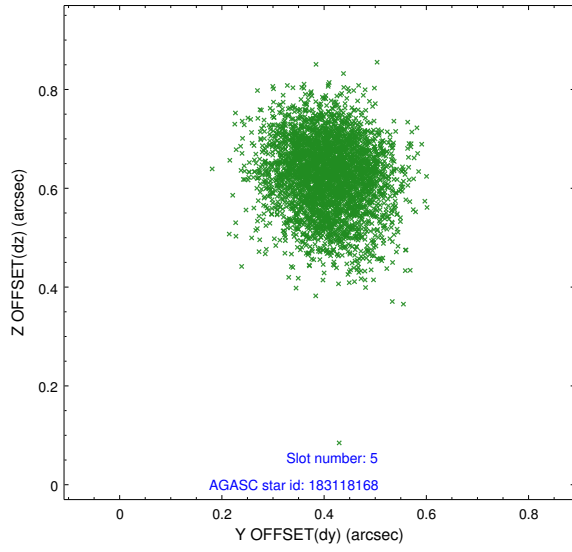
2.4.1 Slot 3



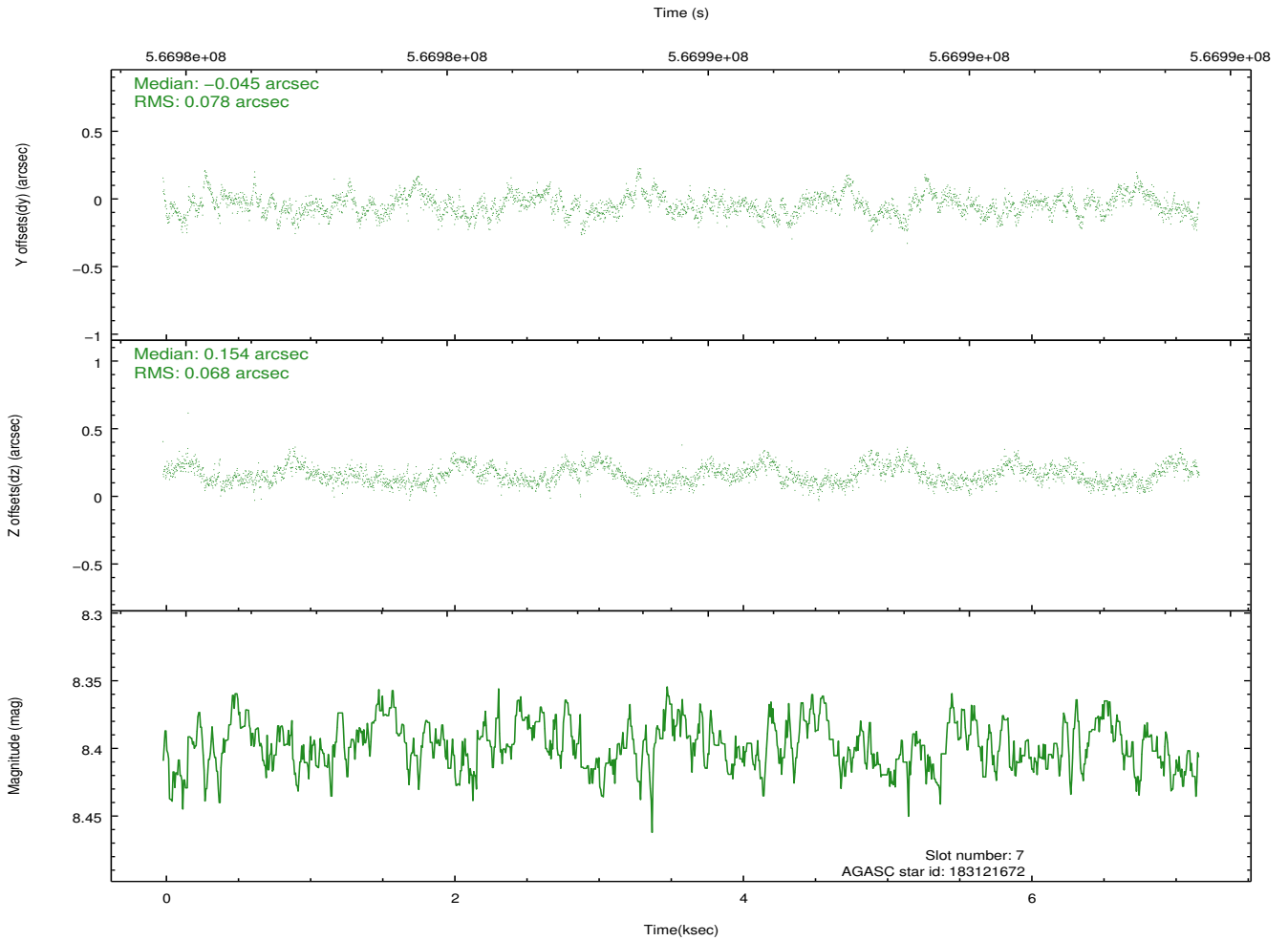
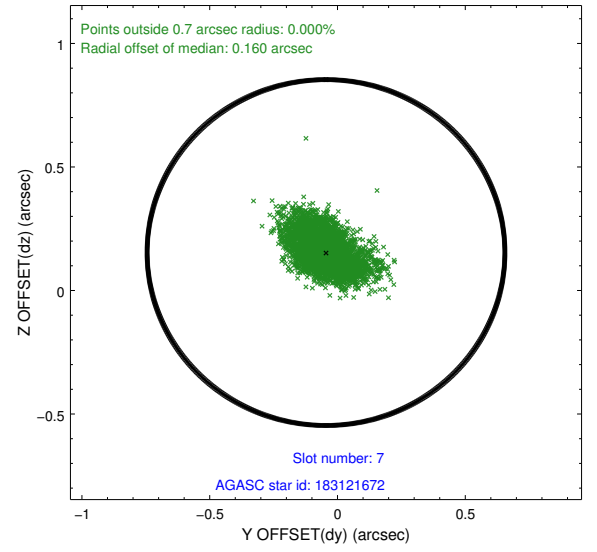
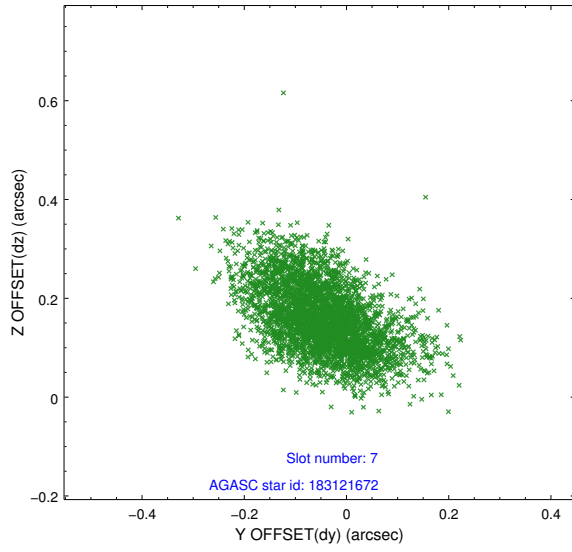
2.4.2 Slot 4



2.4.3 Slot 5

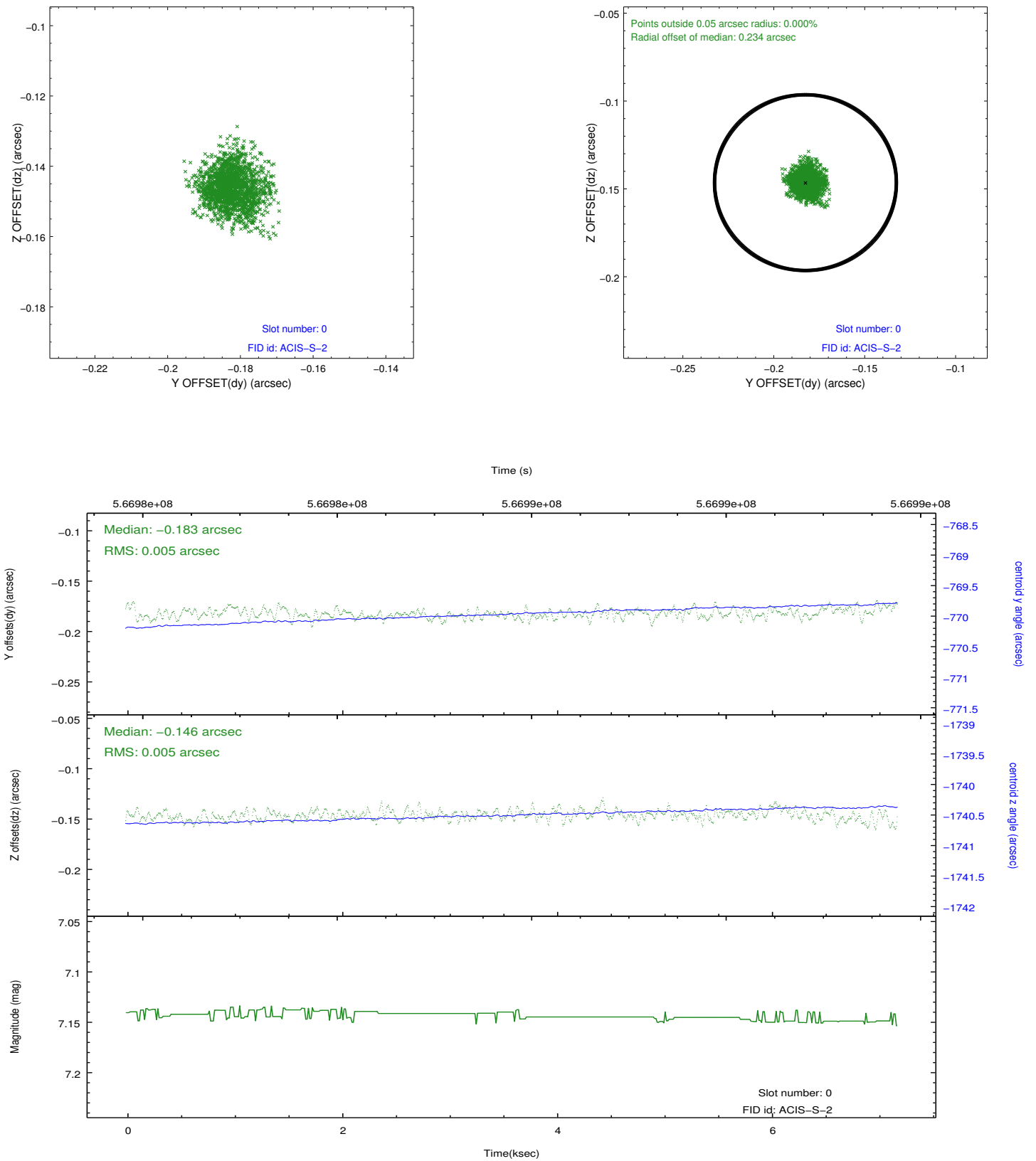


2.4.4 Slot 7

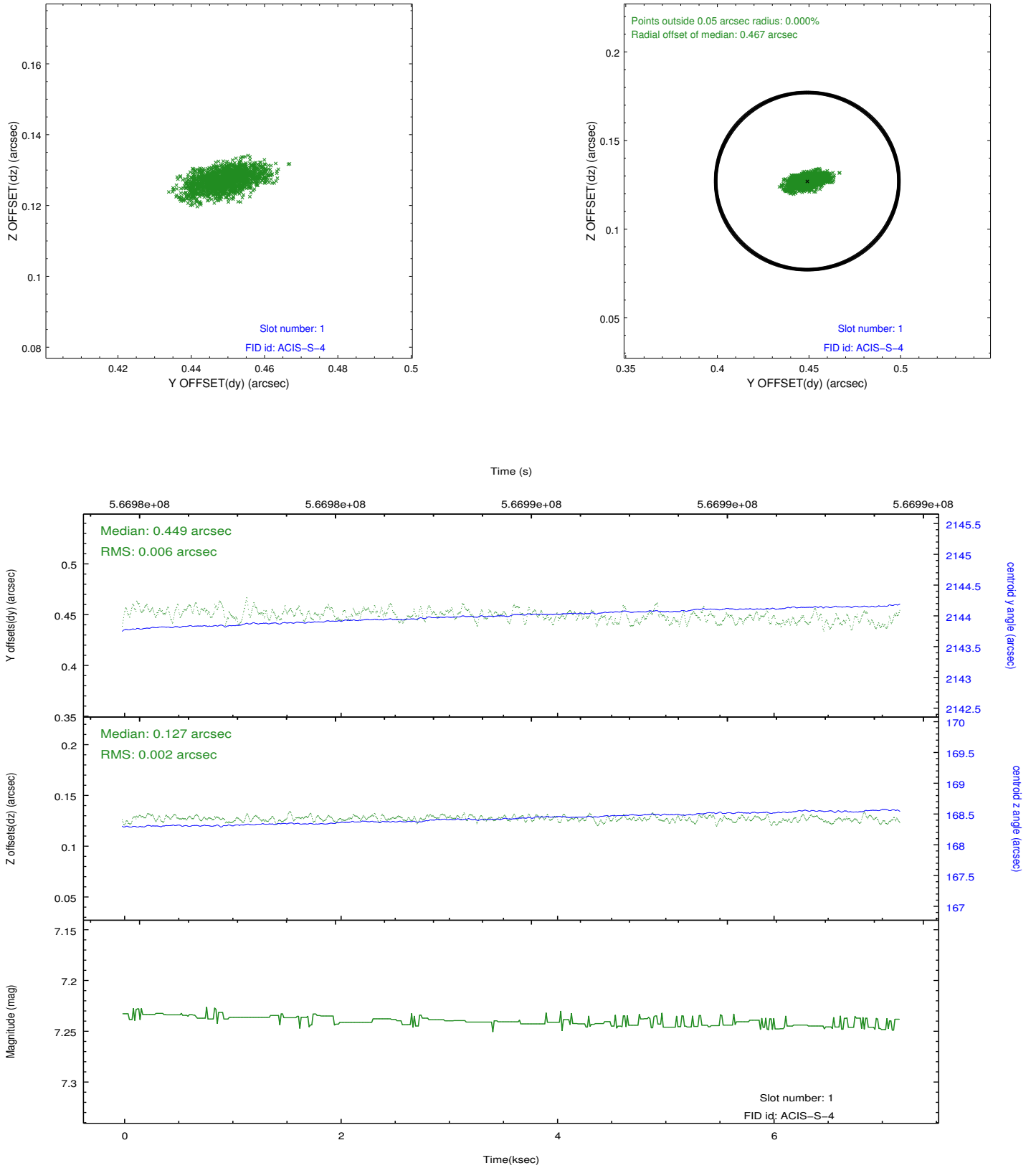


2.5 FID Slots

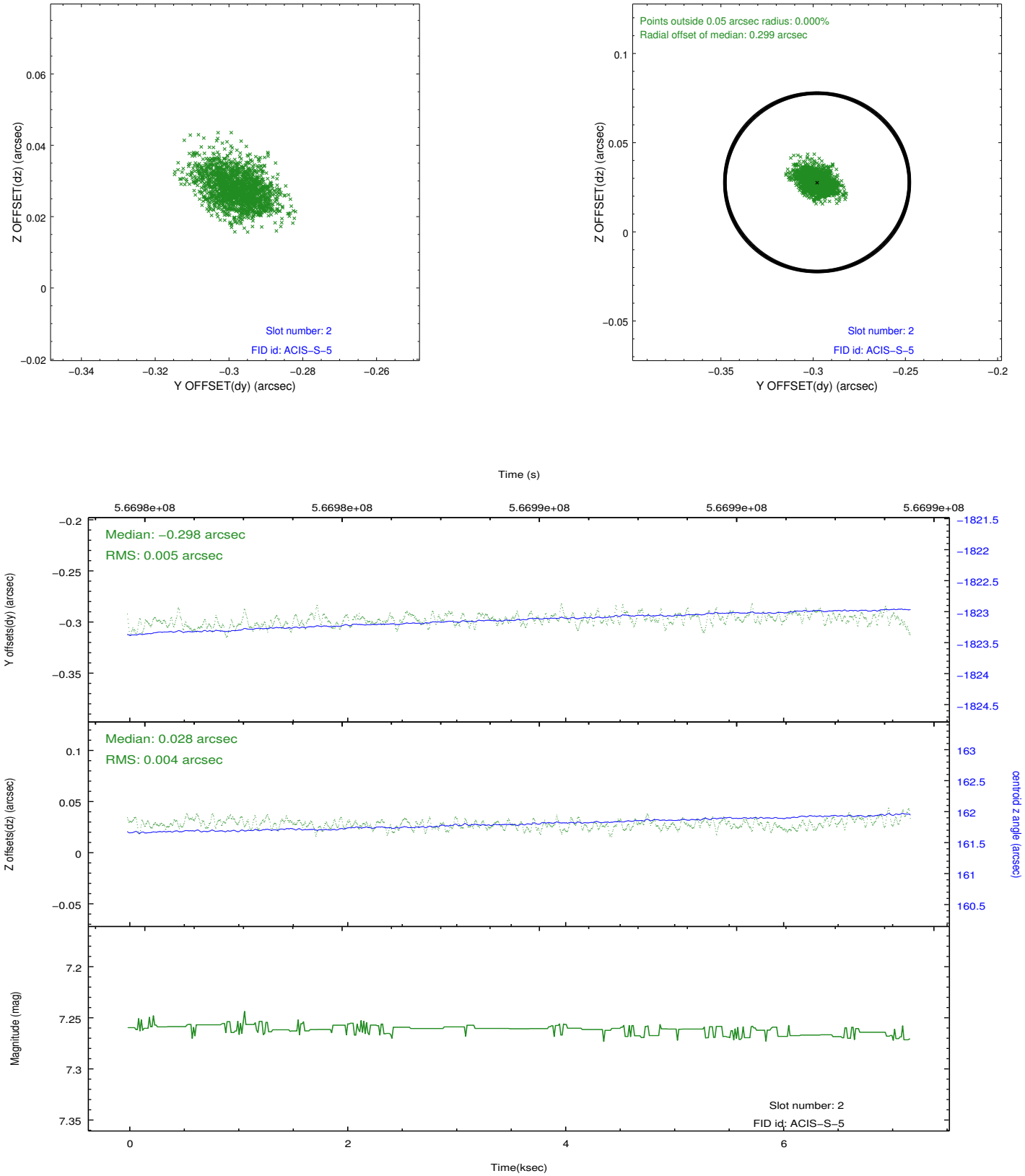
2.5.1 Slot 0



2.5.2 Slot 1



2.5.3 Slot 2



A Summary

A.1 Status

V&V Scientist	Jen Lauer
V&V Date (YYYY-MM-DD)	2015.12.23
V&V Edition	1
V&V Disposition and Status	OK
V&V Charge Time	6.7752567763329

A.2 Comments

Joint Proposal: HST

=====

The guide star in slot 6 was removed from the aspect solution due to poor data quality. The aspect solution is improved by the removal of this guide star from the solution.