

V&V Reference Report

L2 ASCDS Version : 10.4.3.1

Observation 18461 - L2 Version 1
Chandra X-Ray Center

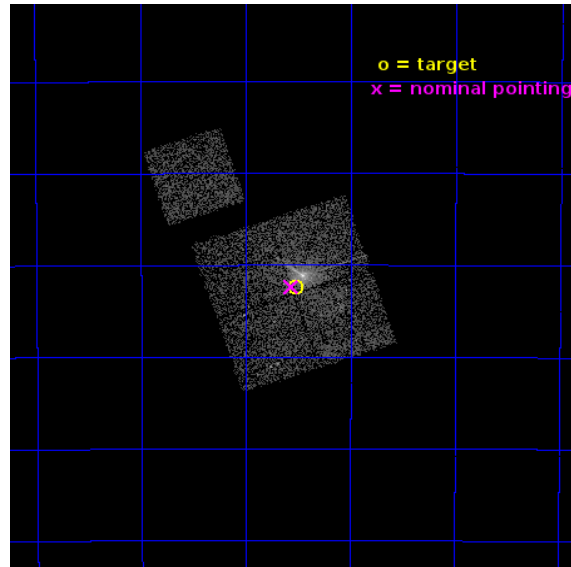
L2 Processing Date : Apr 23 2016

Contents

1	Front	2
2	OBI	3
2.1	OBI	3
2.1.1	Images	3
2.1.2	Bias	3
2.1.3	Parameters	4
2.1.4	Events	4
2.2	Compared Parameters	5
2.3	Aspect	6
2.4	Star Slots	9
2.4.1	Slot 3	9
2.4.2	Slot 4	10
2.4.3	Slot 5	11
2.4.4	Slot 6	12
2.4.5	Slot 7	13
2.5	FID Slots	14
2.5.1	Slot 0	14
2.5.2	Slot 1	15
2.5.3	Slot 2	16
A	Summary	17
A.1	Status	17
A.2	Comments	17

1 Front

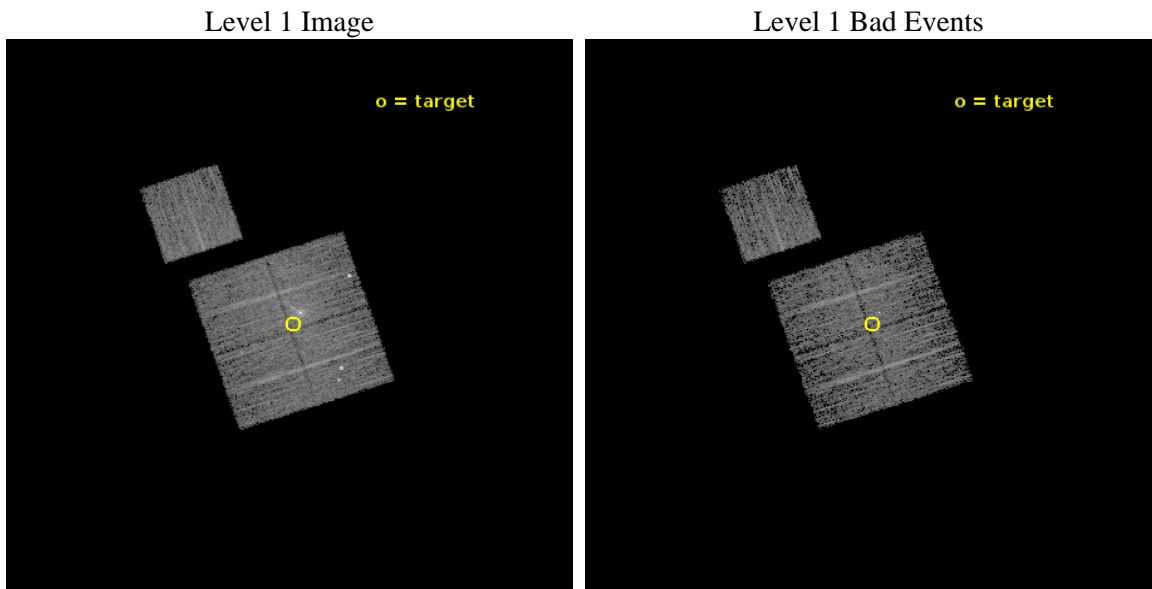
seq_num	703289	Sequence number
obs_id	18461	Observation id
title	Ongoing monitoring of the jet of Centaurus A	Proposal title
observer	Ralph Kraft	Principal investigator
object	Centaurus A	Source name
dtcycle	0	
cycle	P	events from which exps? Prim/Second/Both
ra_targ	201.381325	Observer's specified target RA [deg]
dec_targ	-43.039861	Observer's specified target Dec [deg]
ra_nom	201.39125097294	Nominal RA [deg]
dec_nom	-43.039520238754	Nominal Dec [deg]
roll_nom	341.44687832558	Nominal Roll [deg]
revision	1	Processing version of data
ontime	5192.5000400543	Sum of GTIs [s]
livetime	5124.6562043681	Livetime [s]
ontime0	5192.5000400543	Sum of GTIs [s]
ontime1	5192.5000400543	Sum of GTIs [s]
ontime2	5192.5000400543	Sum of GTIs [s]
ontime3	5192.5000400543	Sum of GTIs [s]
ontime6	5192.5000400543	Sum of GTIs [s]
l2events	23094	Number of level 2 events



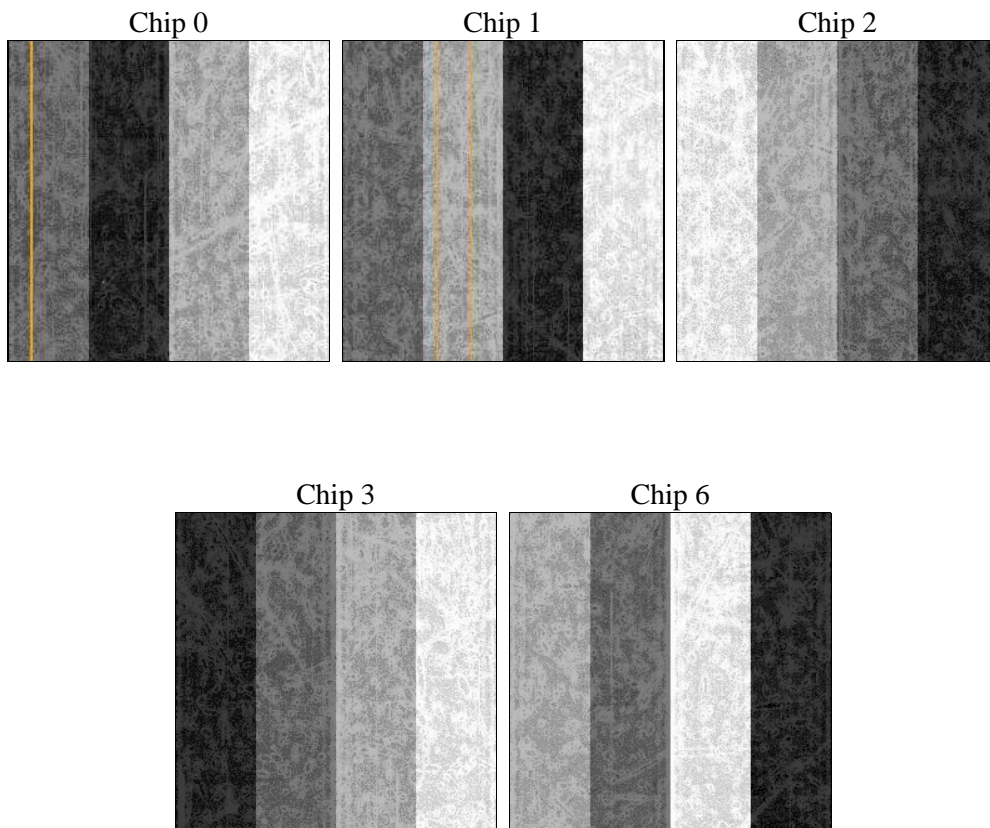
2 OBI

2.1 OBI

2.1.1 Images



2.1.2 Bias



2.1.3 Parameters

obi_num	0	Obi number	sched_exp_time	5119.701000	[s] Scheduled observation exposure time
ascdsver	10.4.3.1	Processing system revision	ontime	5192.5000400543	Sum of GTIs [s]
caldsver	4.7.1	 	ontime0	5192.5000400543	Sum of GTIs [s]
date	2016-04-23T22:27:02	Date and time of file creation	ontime1	5192.5000400543	Sum of GTIs [s]
revision	1	Processing version of data	ontime2	5192.5000400543	Sum of GTIs [s]
			ontime3	5192.5000400543	Sum of GTIs [s]
			ontime6	5192.5000400543	Sum of GTIs [s]
			l1events	169818	Number of level 1 events

2.1.4 Events

	ccd 0	ccd 1	ccd 2	ccd 3	ccd 6
level 1 events	30414	35982	32299	39250	31873
rejected events	26240	29205	28159	28317	28100
rejected %	86%	81%	87%	72%	88%

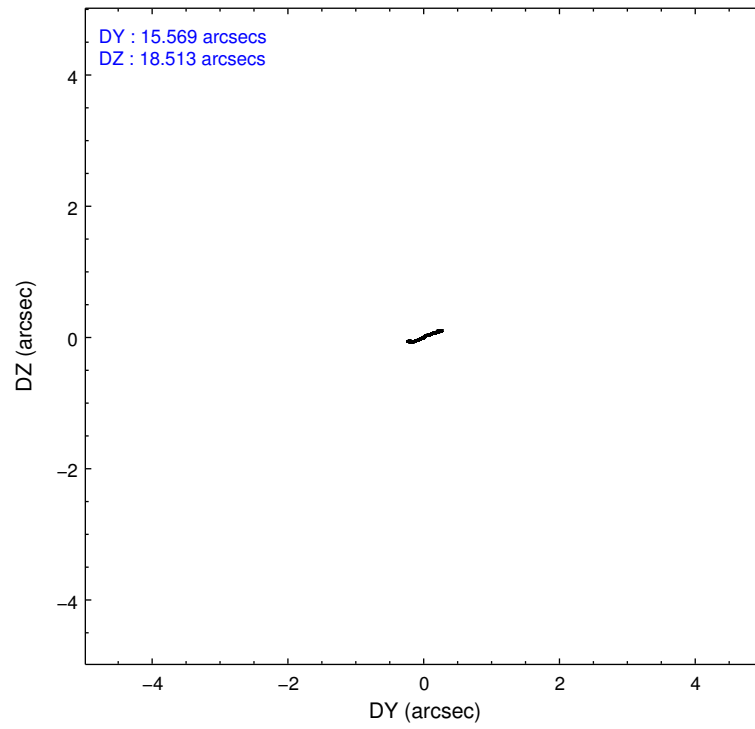
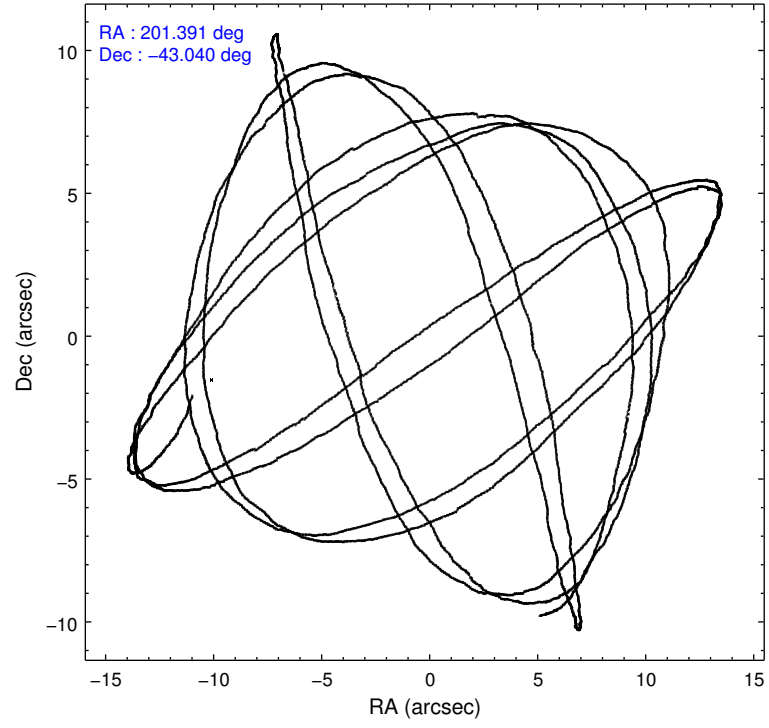
	ccd 0	ccd 1	ccd 2	ccd 3	ccd 6
grade 0 events	1630	4064	1785	6925	1354
	5%	11%	5%	17%	4%
grade 1 events	10	38	15	141	21
	0%	0%	0%	0%	0%
grade 2 events	968	1092	908	1524	817
	3%	3%	2%	3%	2%
grade 3 events	398	390	391	634	374
	1%	1%	1%	1%	1%
grade 4 events	361	376	376	607	343
	1%	1%	1%	1%	1%
grade 5 events	1300	1469	1257	1745	1390
	4%	4%	3%	4%	4%
grade 6 events	821	858	682	1246	887
	2%	2%	2%	3%	2%
grade 7 events	24926	27695	26885	26428	26687
	81%	76%	83%	67%	83%

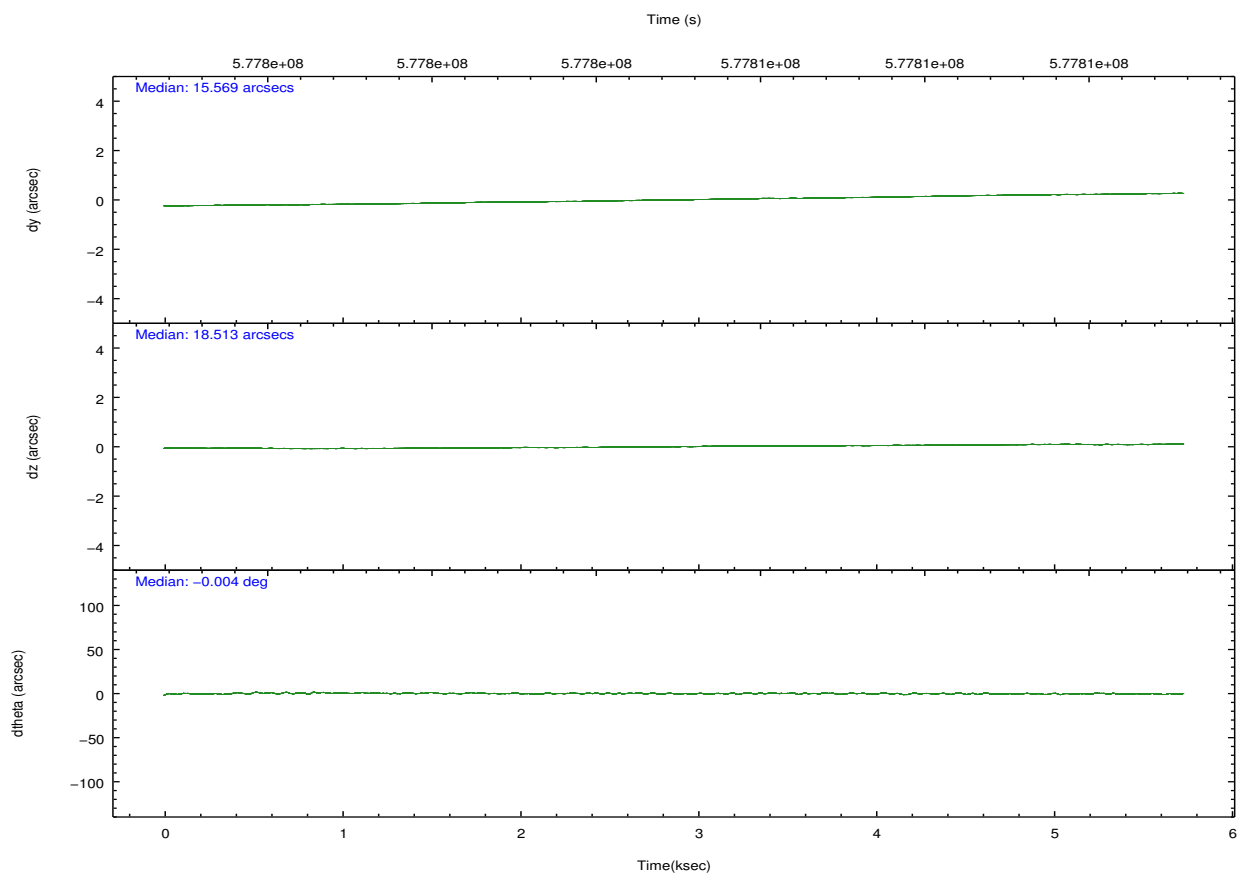
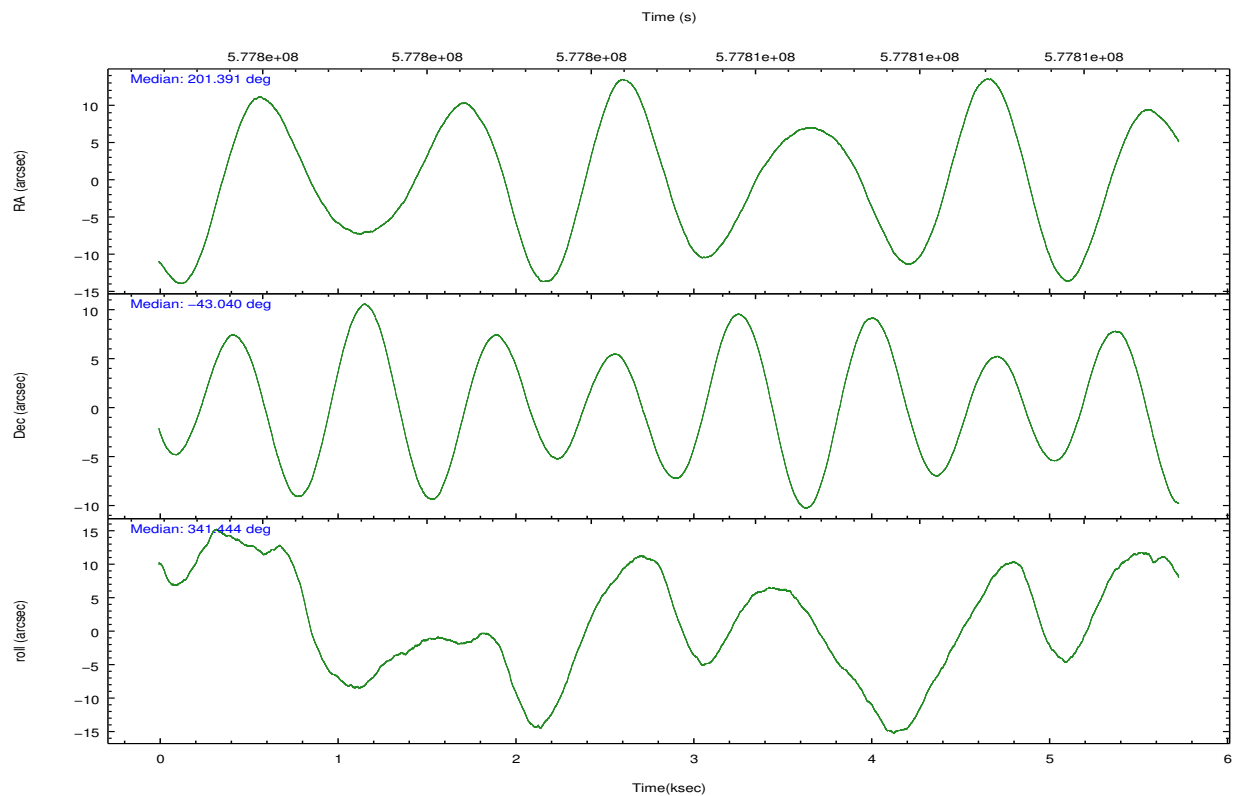
2.2 Compared Parameters

Parameter	Planned	Actual
Instrument	ACIS	ACIS
Detector	ACIS-01236	ACIS-01236
Grating	NONE	NONE
Data mode	FAINT	FAINT
Observation mode	POINTING	POINTING
[deg] Pointing RA	201.354289	201.3912509729417
[deg] Pointing Dec	-43.045095	-43.03952023875421
[deg] Pointing Roll	341.212961	341.4468783255786
[mm] SIM focus pos	-0.782348	-0.7809083437167272
[mm] SIM defocus	0	0.001439871863259334
[mm] SIM translation stage pos	-233.592463	-233.5874344608287
[mm] SIM translation stage offset	0	-0.005018542100998502
[s] Observation start time (MET)	577803230.184000	577802074.10908
Observation start date	2016-04-23T12:52:42	2016-04-23T12:34:34
[s] Observation end time (MET)	577808349.184000	577808587.4719501
Observation end date	2016-04-23T14:18:01	2016-04-23T14:23:07
Read mode	TIMED	TIMED

Parameter	Planned	Actual
Obspar format version number	7	7
Obspar file type	PREDICTED	ACTUAL
Obspar update status	NONE	UPDATED
CCD I0 on	Y	Y
CCD I1 on	Y	Y
CCD I2 on	Y	Y
CCD I3 on	Y	Y
CCD S0 on	N	N
CCD S1 on	N	N
CCD S2 on	O1	Y
CCD S3 on	N	N
CCD S4 on	N	N
CCD S5 on	N	N
Number of optional ACIS chips dropped	0	0
On-chip summing requested	N	N
Subarray requested	NONE	NONE
Alternating exposures requested	N	N
[s] Primary exposure time	0.000000	3.1

2.3 Aspect



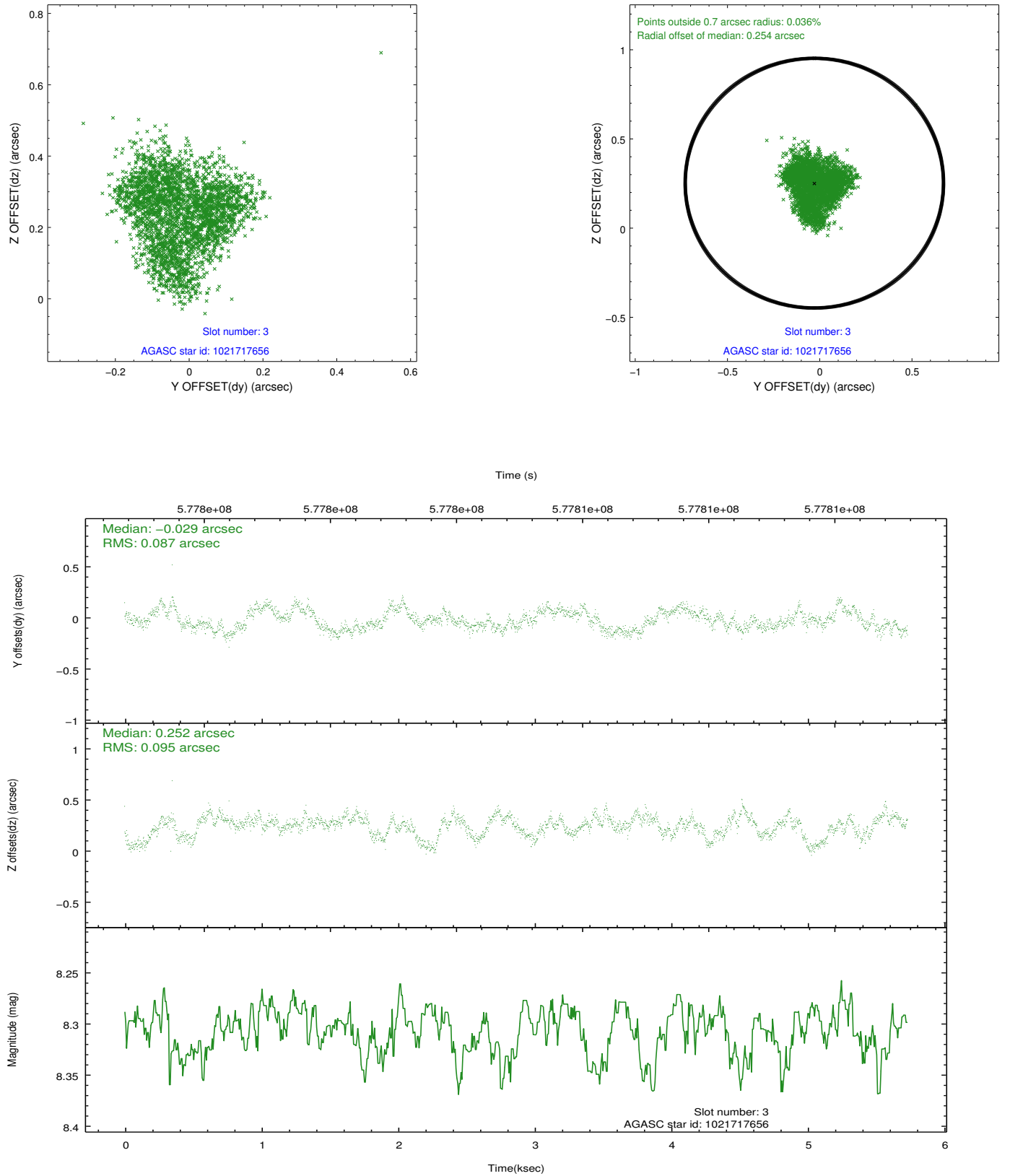


Slot Statistics

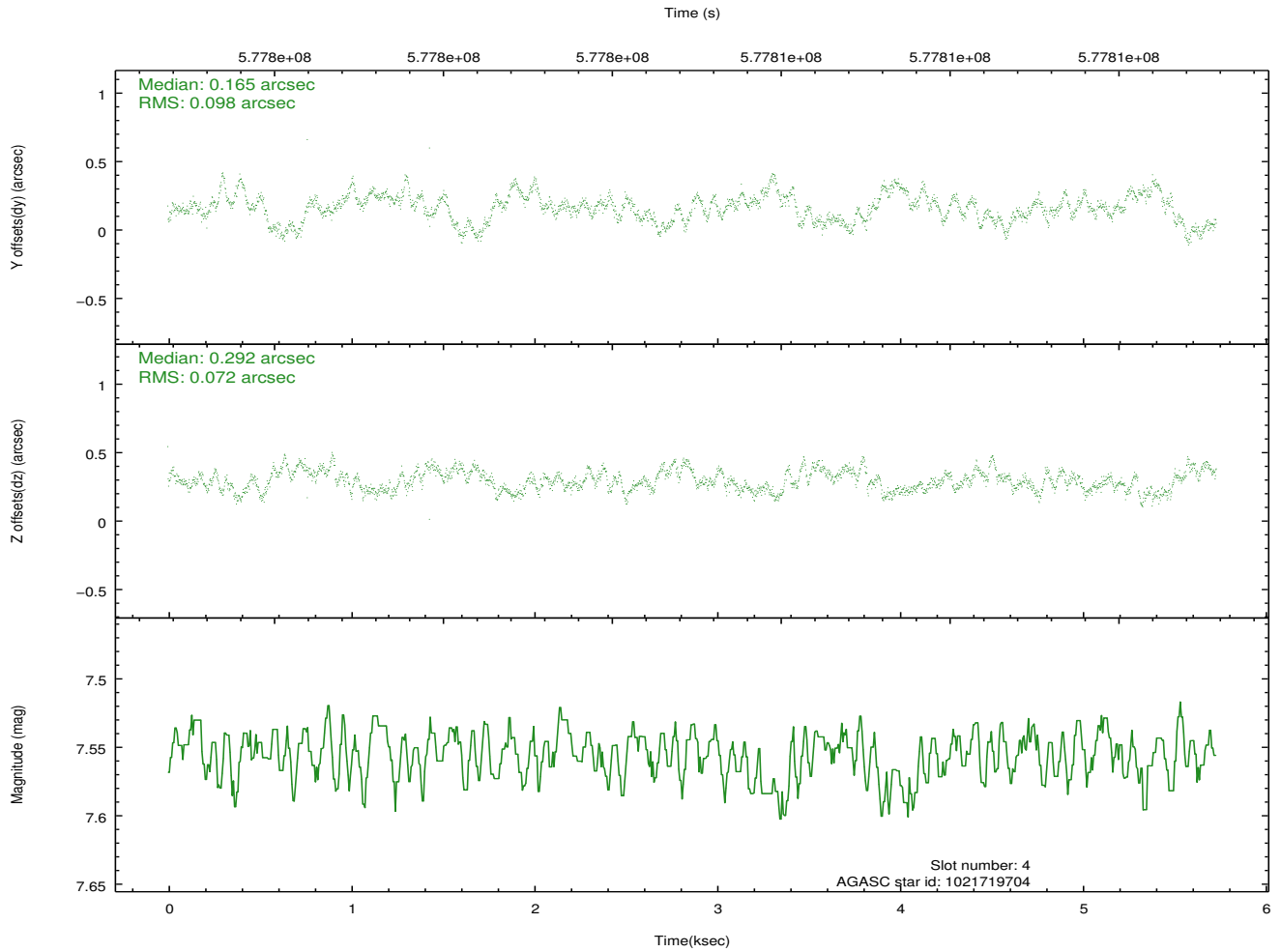
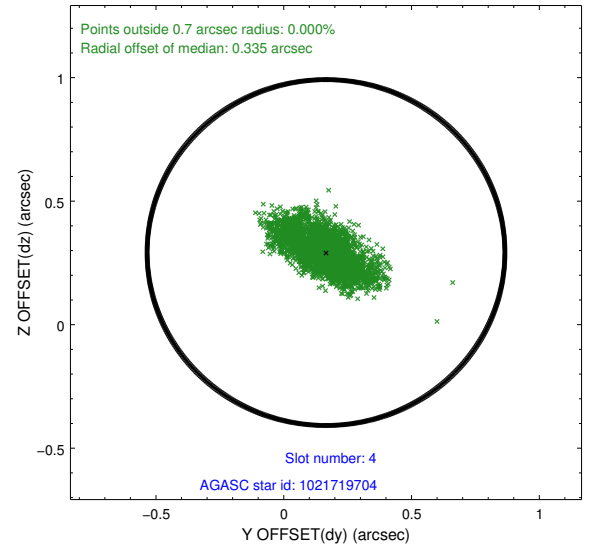
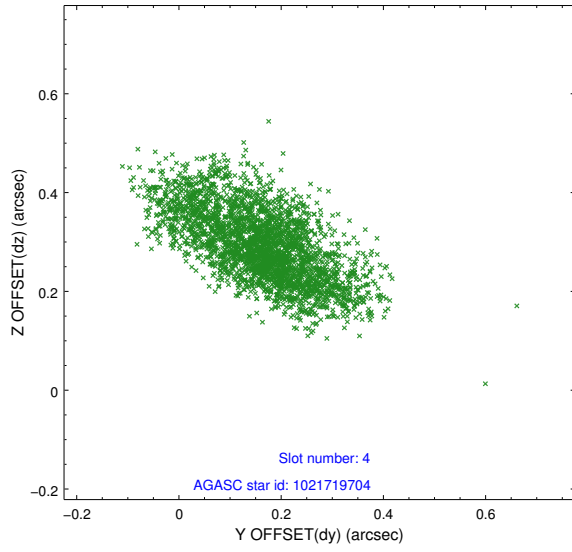
slot	status	used	id	mag	n_pts	med_dy	med_dz	dr1	dr2	ra	dec	mean_y	mean_z
0	FID		ACIS-I-1	7.26	1399	0.056	0.005	0.006	0.010	0.000000	0.000000	923.96	-842.17
1	FID		ACIS-I-5	7.27	1399	-0.346	0.028	0.007	0.013	0.000000	0.000000	-1824.06	1054.70
2	FID		ACIS-I-6	7.27	1399	0.198	0.037	0.007	0.012	0.000000	0.000000	388.40	1700.49
3	GUIDE	used	1021717656	8.31	2797	-0.029	0.252	0.139	0.208	201.139642	-43.082878	-489.84	-310.76
4	GUIDE	used	1021719704	7.56	2798	0.165	0.292	0.130	0.216	200.511976	-43.050426	-2087.32	-742.08
5	GUIDE	used	1021721672	9.48	2796	-0.012	-0.165	0.206	0.292	201.740358	-43.079729	1001.56	206.38
6	GUIDE	used	1021721304	9.59	2794	-0.303	-0.201	0.155	0.251	201.117326	-42.480412	-1249.64	1721.17
7	GUIDE	used	1022235840	9.41	2796	0.162	-0.177	0.185	0.303	201.679306	-43.544276	1382.43	-1429.01

2.4 Star Slots

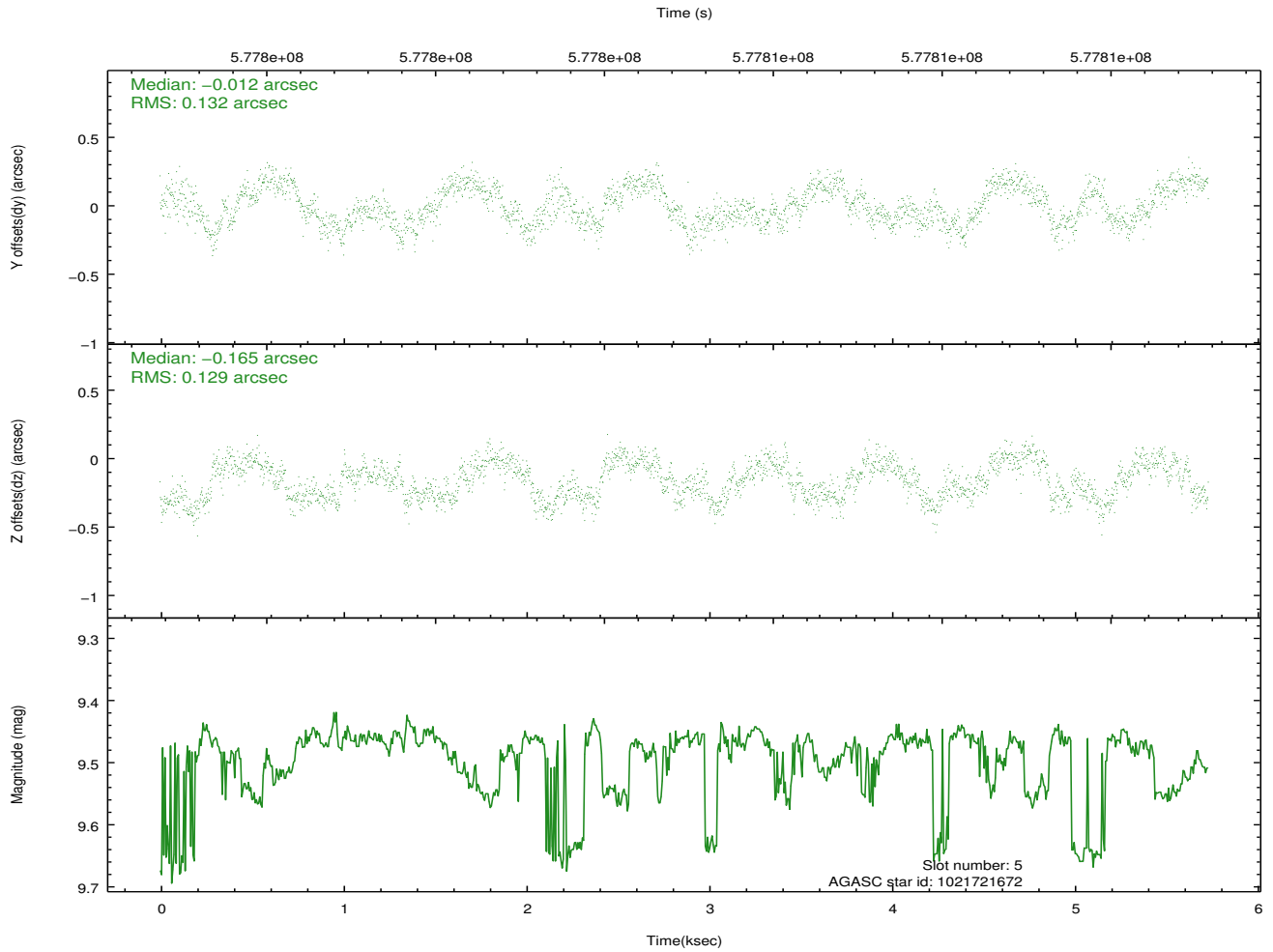
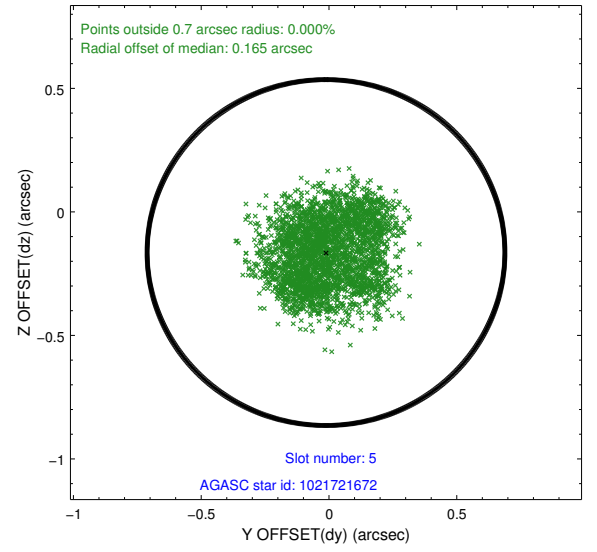
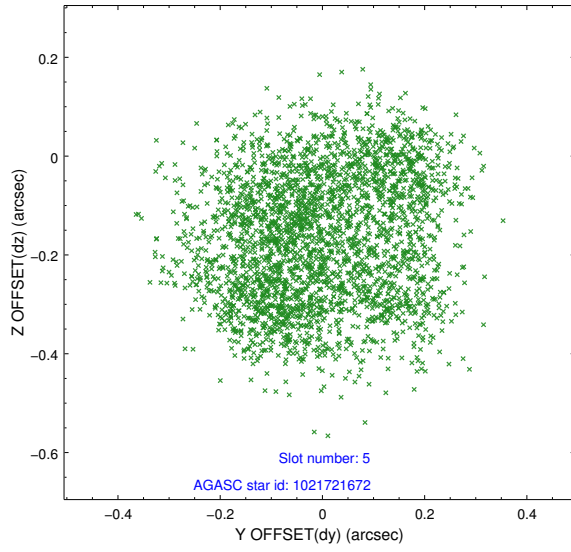
2.4.1 Slot 3



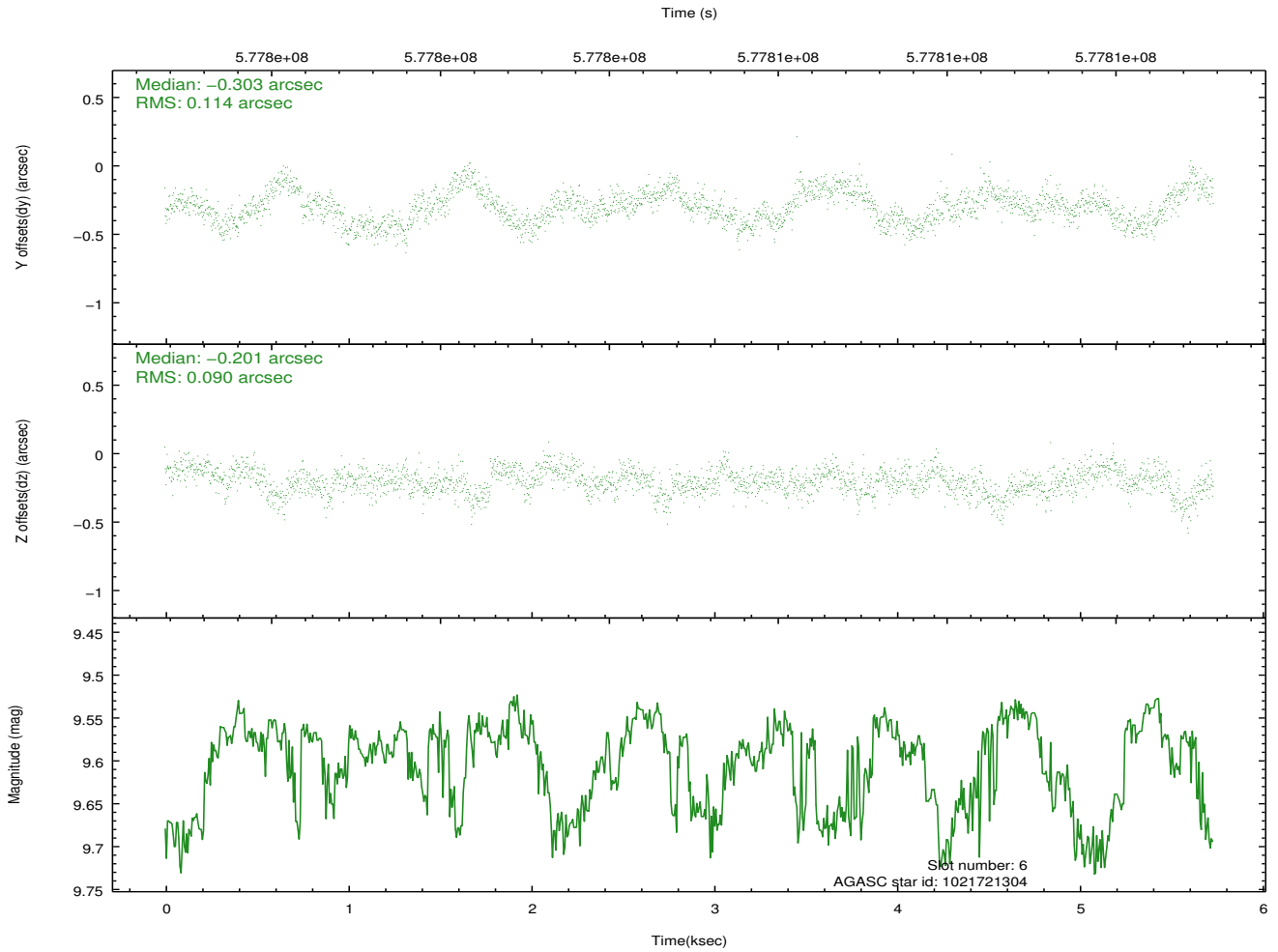
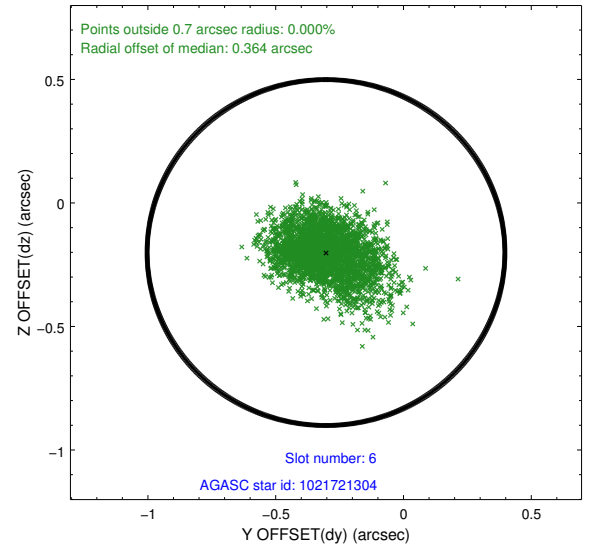
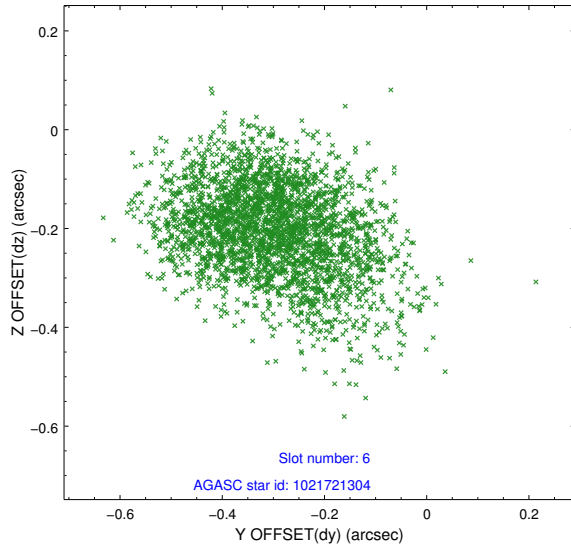
2.4.2 Slot 4



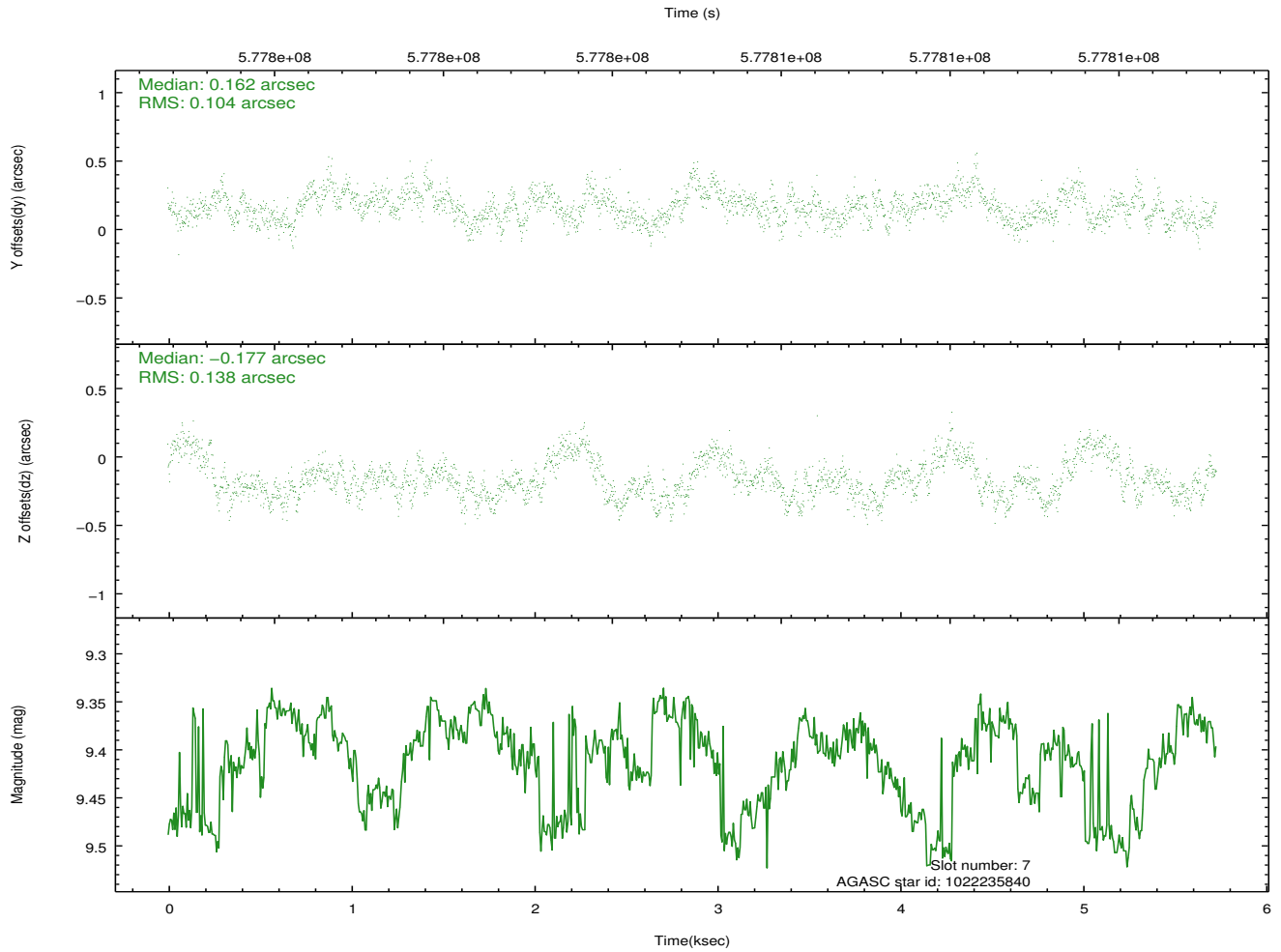
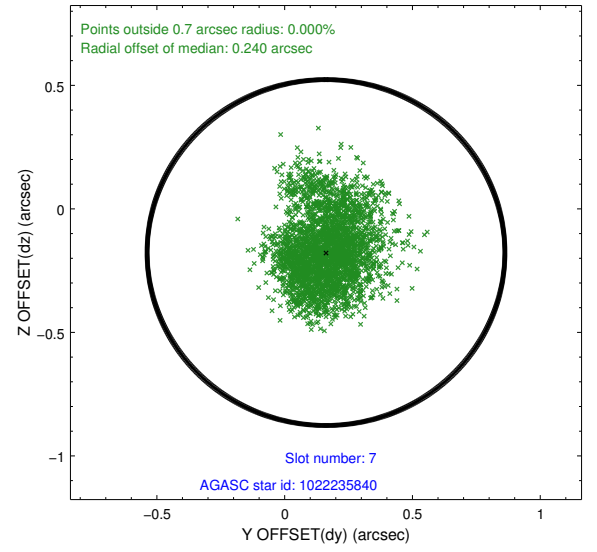
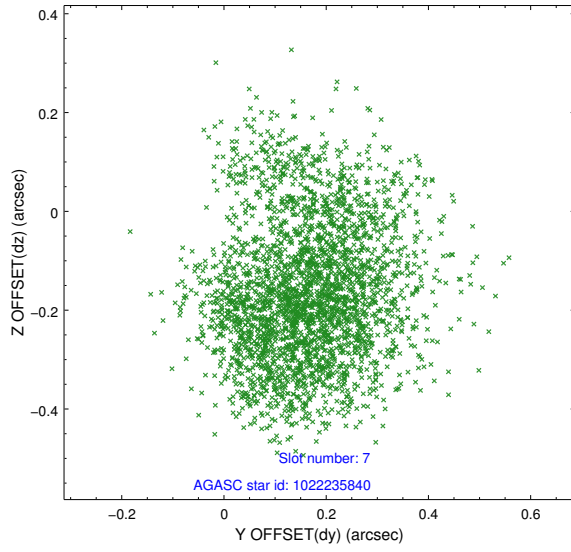
2.4.3 Slot 5



2.4.4 Slot 6

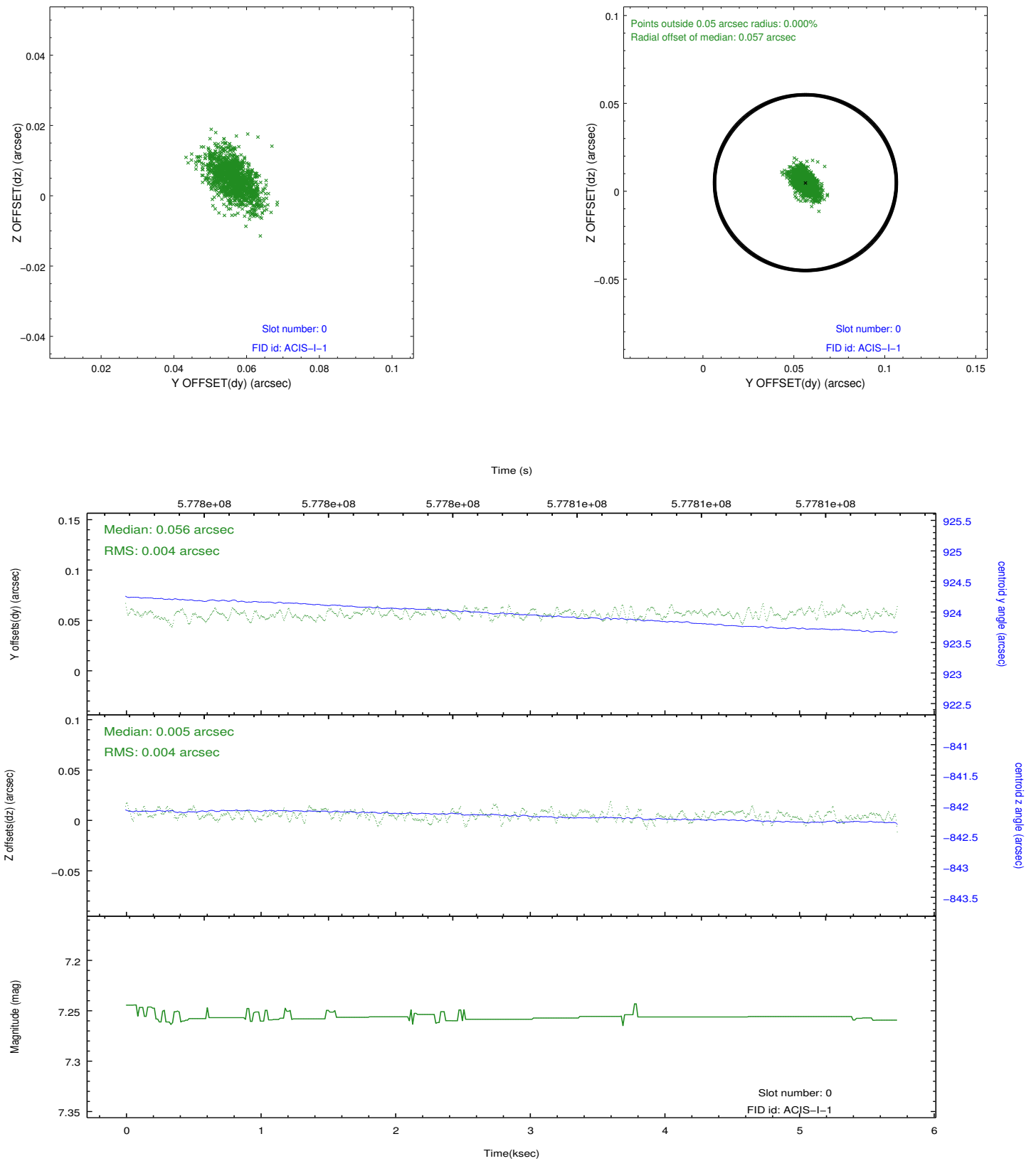


2.4.5 Slot 7

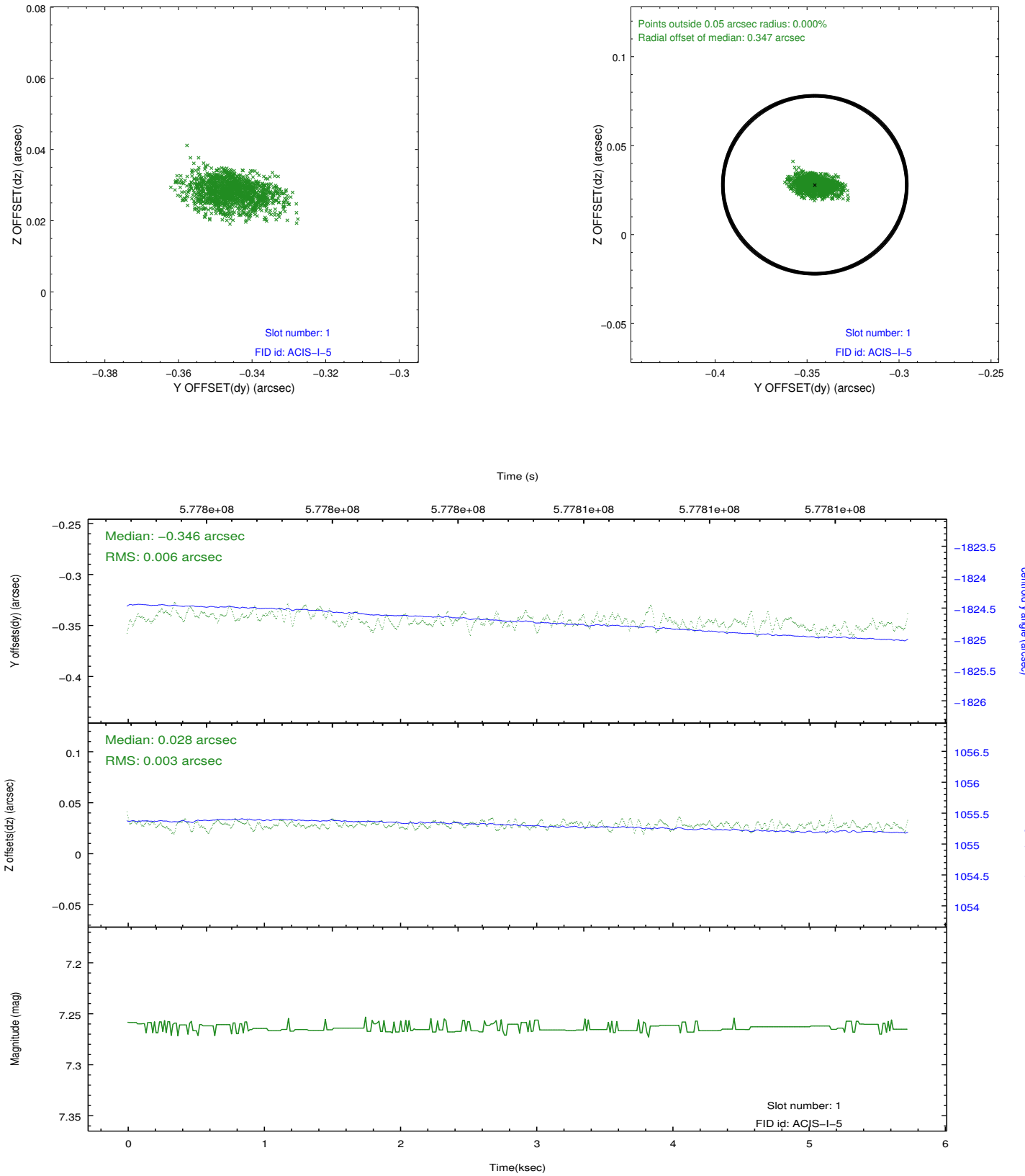


2.5 FID Slots

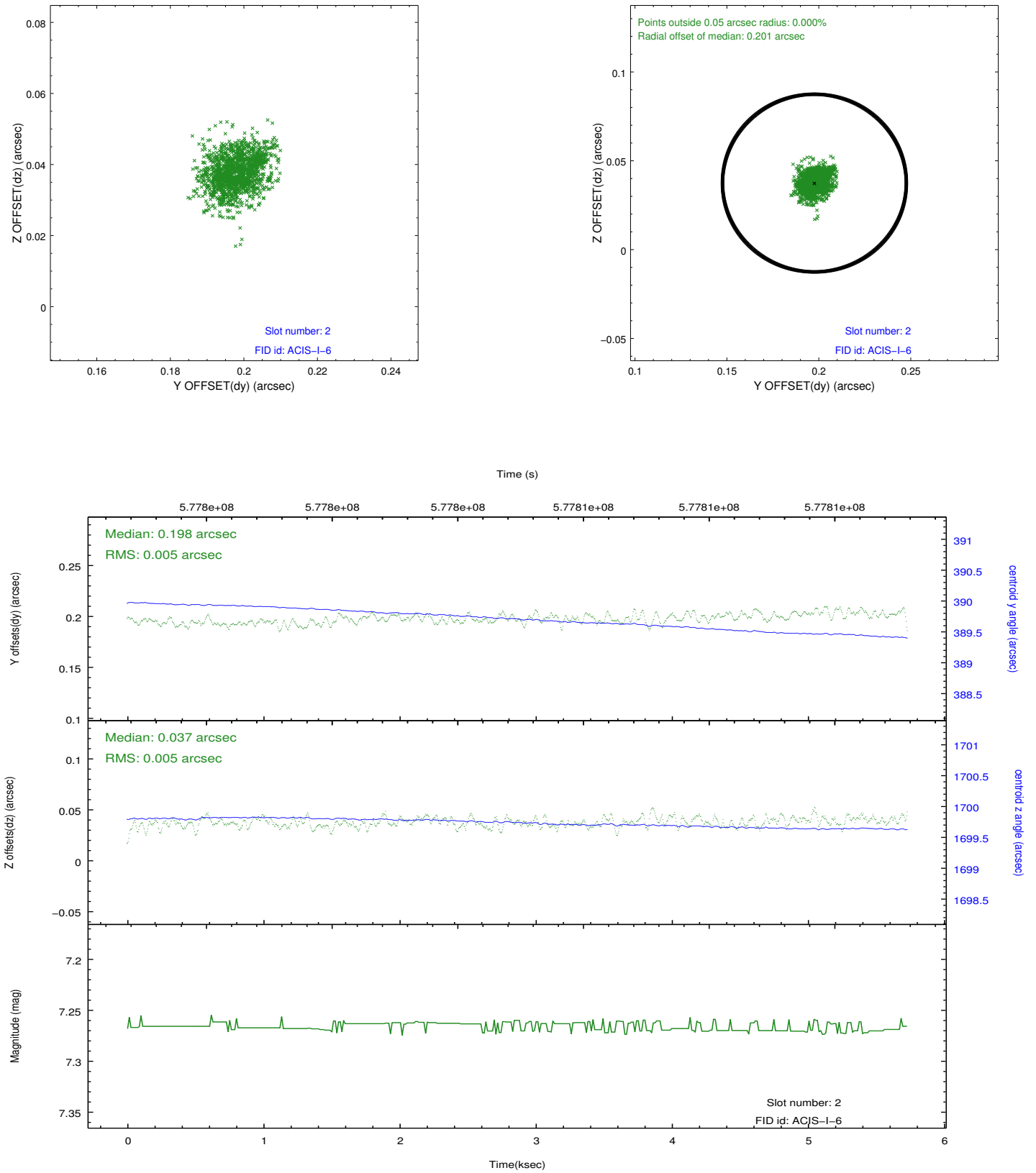
2.5.1 Slot 0



2.5.2 Slot 1



2.5.3 Slot 2



A Summary

A.1 Status

V&V Scientist	Joy Nichols
V&V Date (YYYY-MM-DD)	2016.04.25
V&V Edition	1
V&V Disposition and Status	OK
V&V Charge Time	5.1925000400543

A.2 Comments