

V&V Reference Report

L2 ASCDS Version : 10.5.4

Observation 18205 - L2 Version 2
Chandra X-Ray Center

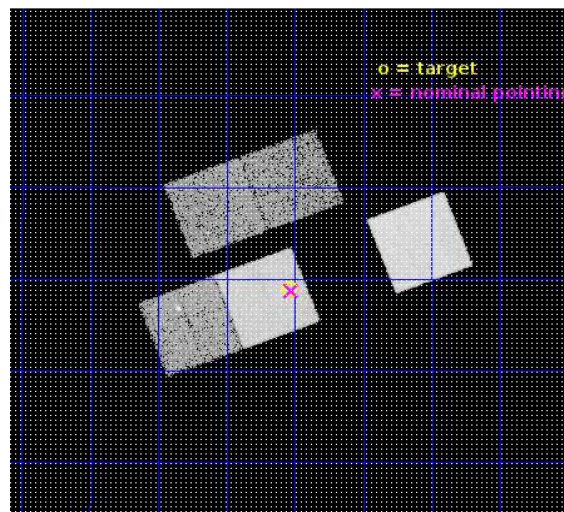
L2 Processing Date : May 23 2017

Contents

1	Front	2
2	OBI	3
2.1	OBI	3
2.1.1	Images	3
2.1.2	Bias	3
2.1.3	Parameters	4
2.1.4	Events	4
2.2	Compared Parameters	5
2.3	Aspect	6
2.4	Star Slots	9
2.4.1	Slot 3	9
2.4.2	Slot 4	10
2.4.3	Slot 5	11
2.4.4	Slot 6	12
2.5	FID Slots	13
2.5.1	Slot 0	13
2.5.2	Slot 1	14
2.5.3	Slot 2	15
A	Summary	16
A.1	Status	16
A.2	Comments	16

1 Front

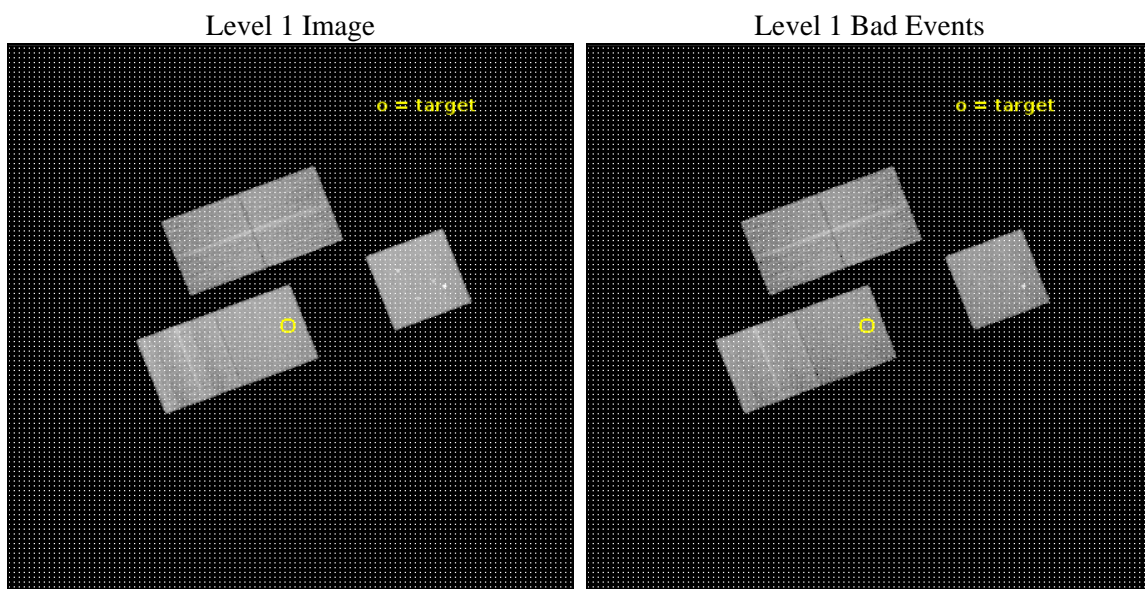
seq_num	703266	Sequence number
obs_id	18205	Observation id
title	Discovery of extreme quasar wind candidates at high redshift	Propo
observer	Nadia Zakamska	Principal investigator
object	SDSSJ1652+1728	Source name
dtcycle	0	
cycle	P	events from which exps? Prim/Second/Both
ra_targ	253.011	Observer's specified target RA [deg]
dec_targ	17.481194	Observer's specified target Dec [deg]
ra_nom	253.00679940488	Nominal RA [deg]
dec_nom	17.478864159938	Nominal Dec [deg]
roll_nom	159.17973730641	Nominal Roll [deg]
revision	2	Processing version of data
ontime	15506.200119376	Sum of GTIs [s]
livetime	15303.600199318	Livetime [s]
ontime2	15506.200119376	Sum of GTIs [s]
ontime3	15503.059099197	Sum of GTIs [s]
ontime5	15506.200119376	Sum of GTIs [s]
ontime7	15506.200119376	Sum of GTIs [s]
ontime8	15506.200119376	Sum of GTIs [s]
l2events	174123	Number of level 2 events



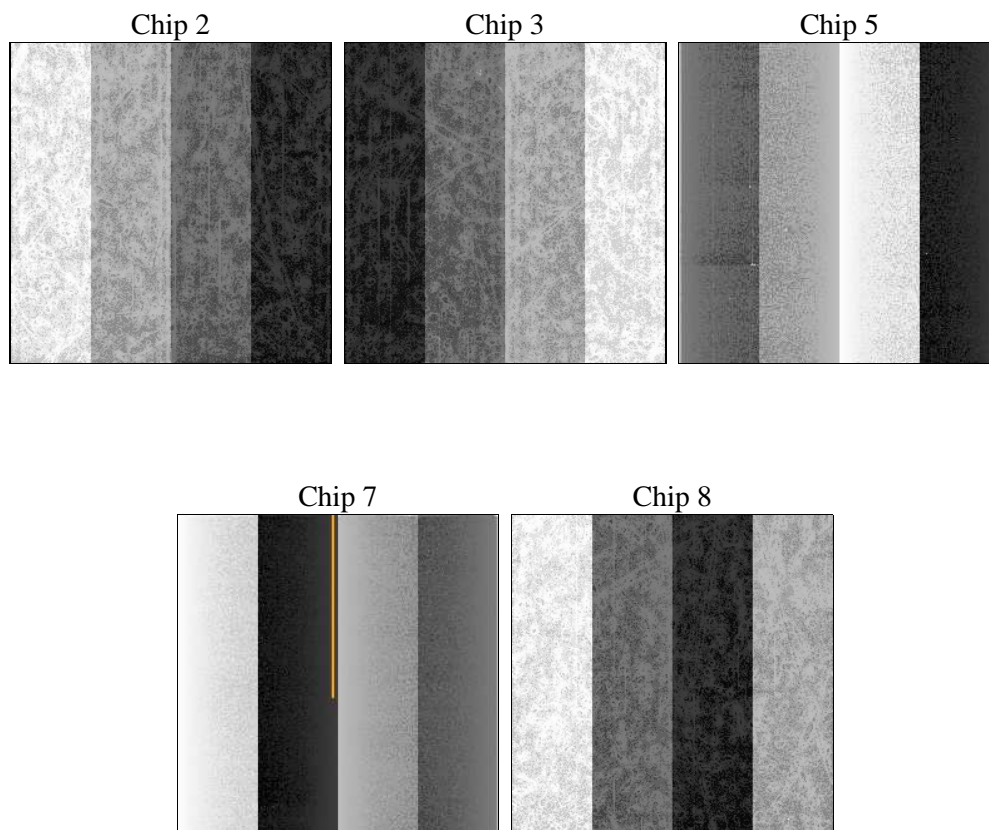
2 OBI

2.1 OBI

2.1.1 Images



2.1.2 Bias



2.1.3 Parameters

obi_num	0	Obi number	sched_exp_time	15454.000000	[s] Scheduled observation exposure time
ascdsver	10.5.4	Processing system revision	ontime	15506.200119376	Sum of GTIs [s]
caldsver	4.7.4	 	ontime2	15506.200119376	Sum of GTIs [s]
date	2017-05-23T21:34:25	Date and time of file creation	ontime3	15503.059099197	Sum of GTIs [s]
revision	2	Processing version of data	ontime5	15506.200119376	Sum of GTIs [s]
			ontime7	15506.200119376	Sum of GTIs [s]
			ontime8	15506.200119376	Sum of GTIs [s]
			l1events	688232	Number of level 1 events

2.1.4 Events

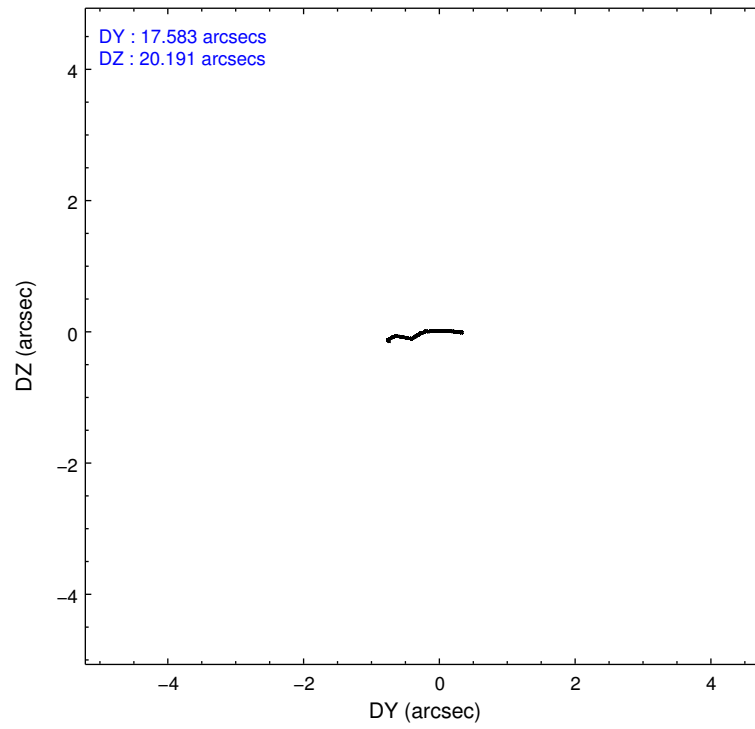
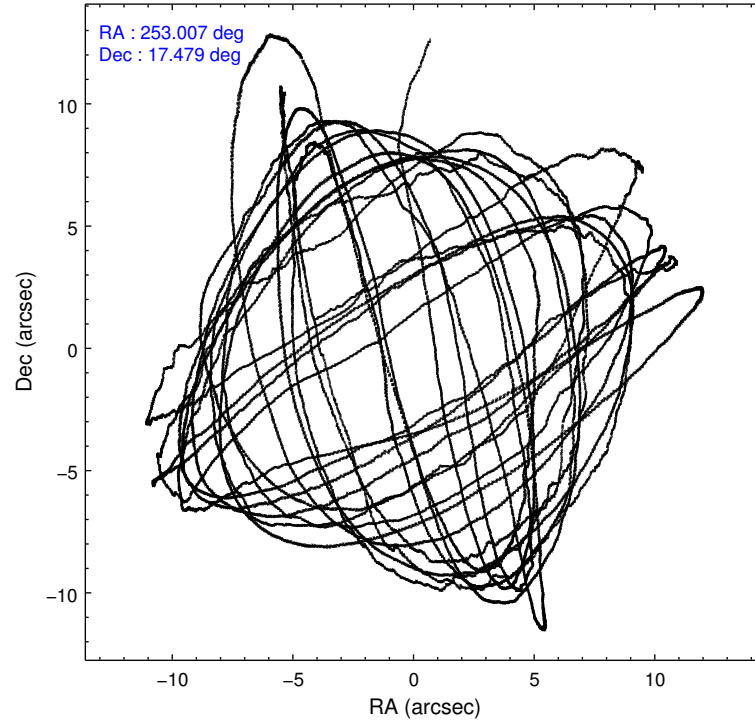
	ccd 2	ccd 3	ccd 5	ccd 7	ccd 8
level 1 events	109151	104158	181884	142654	150385
rejected events	97838	92547	92923	80914	109943
rejected %	89%	88%	51%	56%	73%

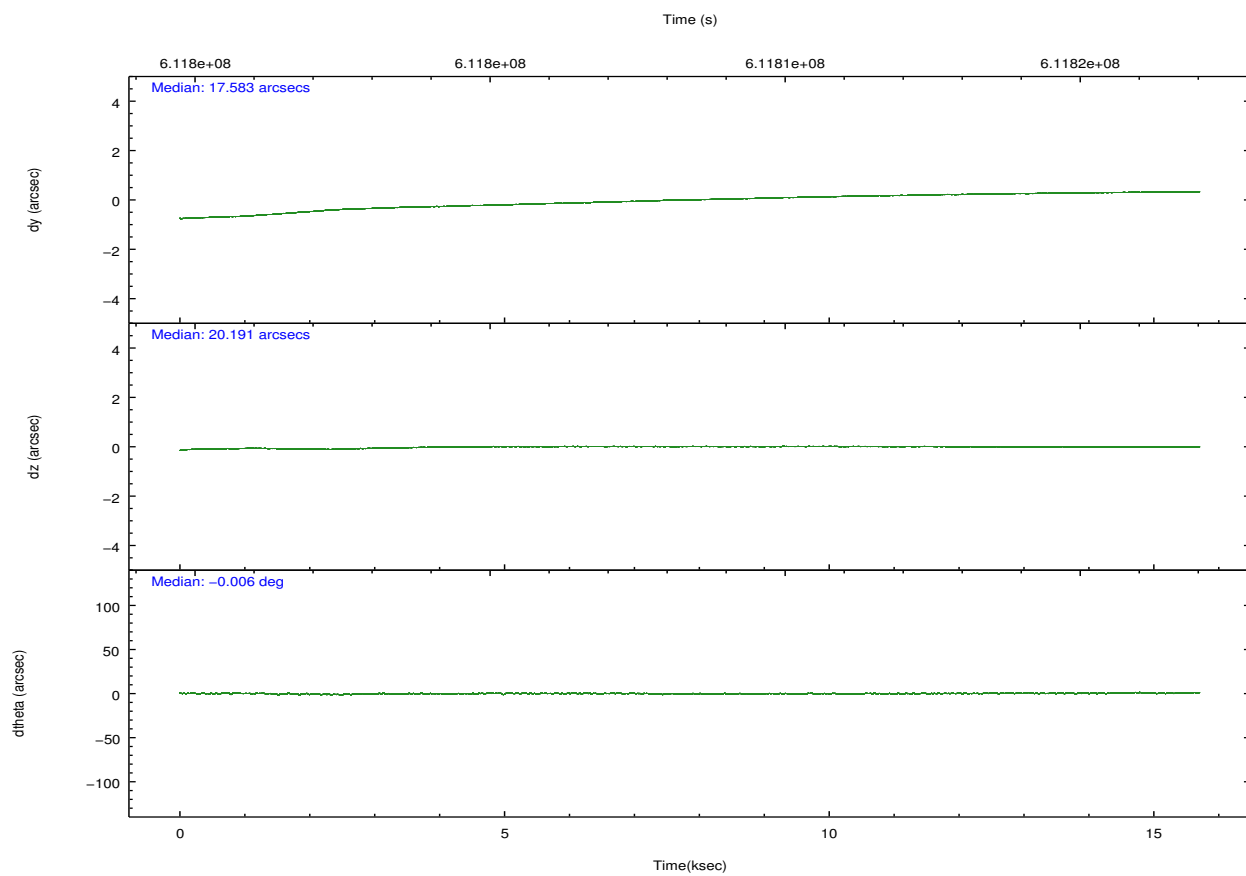
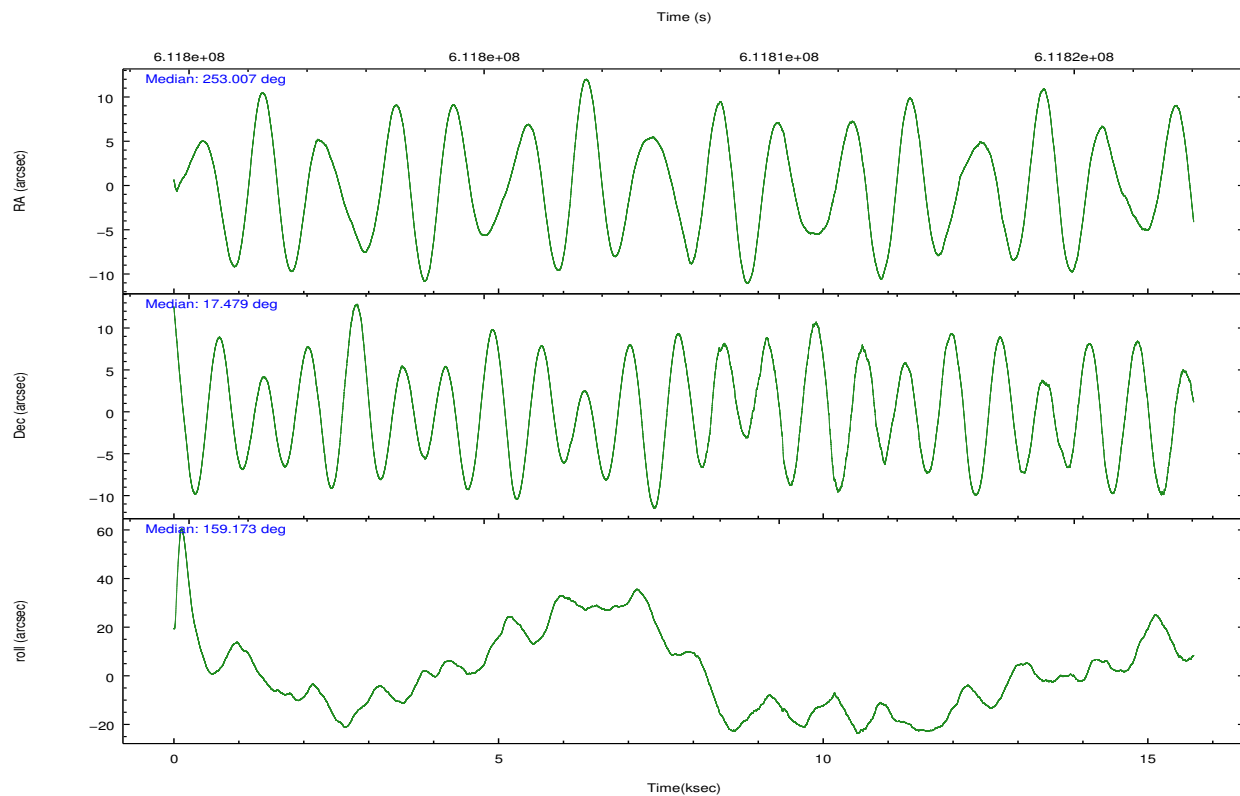
	ccd 2	ccd 3	ccd 5	ccd 7	ccd 8
grade 0 events	3971	4192	8332	4963	11543
	3%	4%	4%	3%	7%
grade 1 events	62	50	413	203	125
	0%	0%	0%	0%	0%
grade 2 events	2850	2552	28644	13273	9681
	2%	2%	15%	9%	6%
grade 3 events	1151	1280	2750	4969	4138
	1%	1%	1%	3%	2%
grade 4 events	1175	1192	2710	4879	3865
	1%	1%	1%	3%	2%
grade 5 events	4213	5257	12575	14135	7964
	3%	5%	6%	9%	5%
grade 6 events	2174	2397	46567	33690	11221
	1%	2%	25%	23%	7%
grade 7 events	93555	87238	79893	66542	101848
	85%	83%	43%	46%	67%

2.2 Compared Parameters

Parameter	Planned	Actual	Parameter	Planned	Actual
Instrument	ACIS	ACIS	Obspar format version number	7	7
Detector	ACIS-23578	ACIS-23578	Obspar file type	PREDICTED	ACTUAL
Grating	NONE	NONE	Obspar update status	NONE	UPDATED
Data mode	VFAINT	VFAINT	CCD I0 on	N	N
Observation mode	POINTING	POINTING	CCD I1 on	N	N
[deg] Pointing RA	253.035107	253.0067994048817	CCD I2 on	O2	Y
[deg] Pointing Dec	17.483603	17.4788641599382	CCD I3 on	O1	Y
[deg] Pointing Roll	159.014650	159.1797373064058	CCD S0 on	N	N
[mm] SIM focus pos	-0.684267	-0.6828225247311905	CCD S1 on	O3	Y
[mm] SIM defocus	0	0.001444936568705701	CCD S2 on	N	N
[mm] SIM translation stage pos	-190.132523	-190.1425803651734	CCD S3 on	Y	Y
[mm] SIM translation stage offset	0	0.01005778216563158	CCD S4 on	O4	Y
[s] Observation start time (MET)	611800764.184000	611799785.49514	CCD S5 on	N	N
Observation start date	2017-05-22T00:38:15	2017-05-22T00:23:05	Number of optional ACIS chips dropped	0	0
[s] Observation end time (MET)	611816218.184000	611817622.54618	On-chip summing requested	N	N
Observation end date	2017-05-22T04:55:49	2017-05-22T05:20:22	Subarray requested	NONE	NONE
Read mode	TIMED	TIMED	Alternating exposures requested	N	N
			[s] Primary exposure time	0.000000	3.1

2.3 Aspect



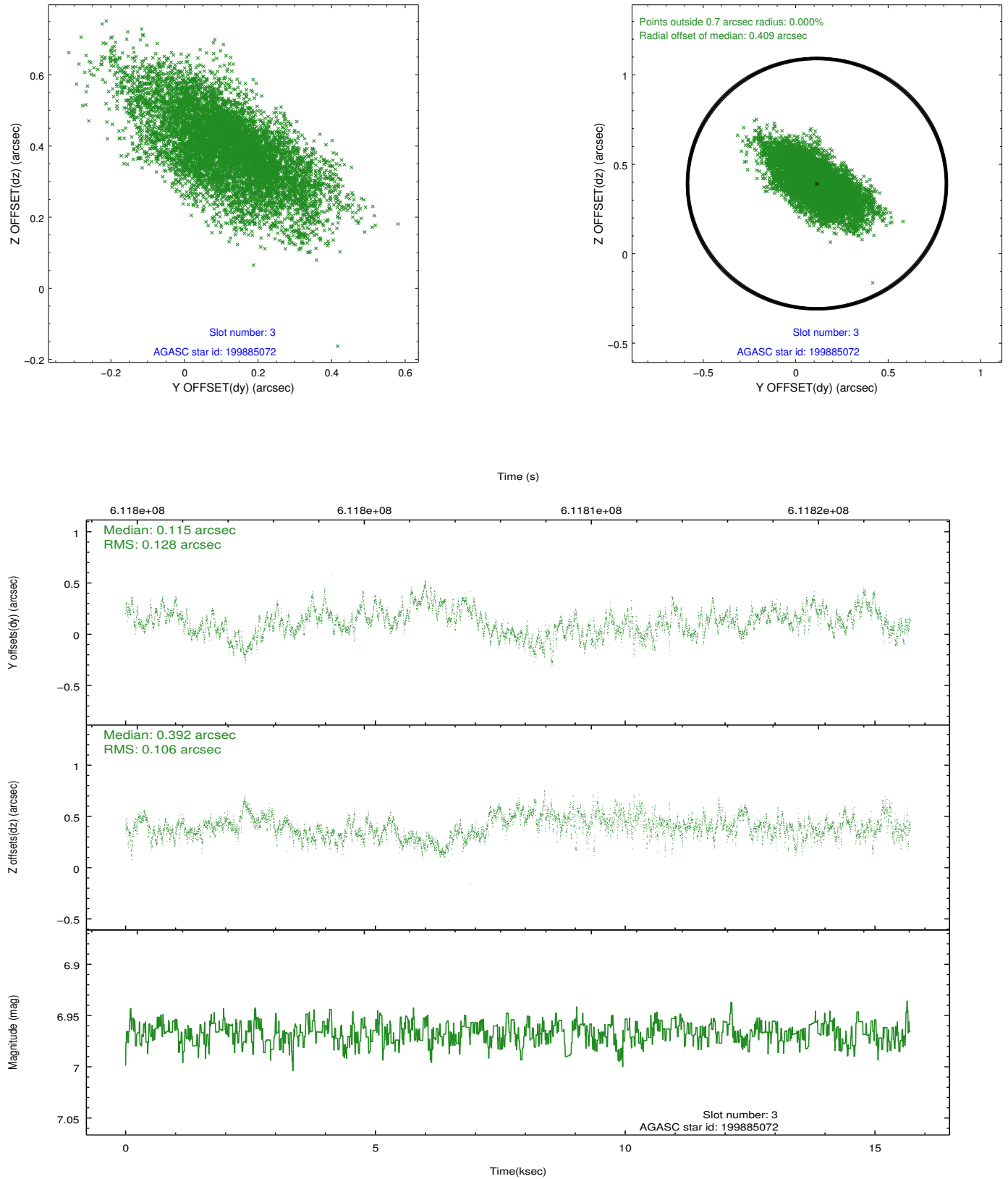


Slot Statistics

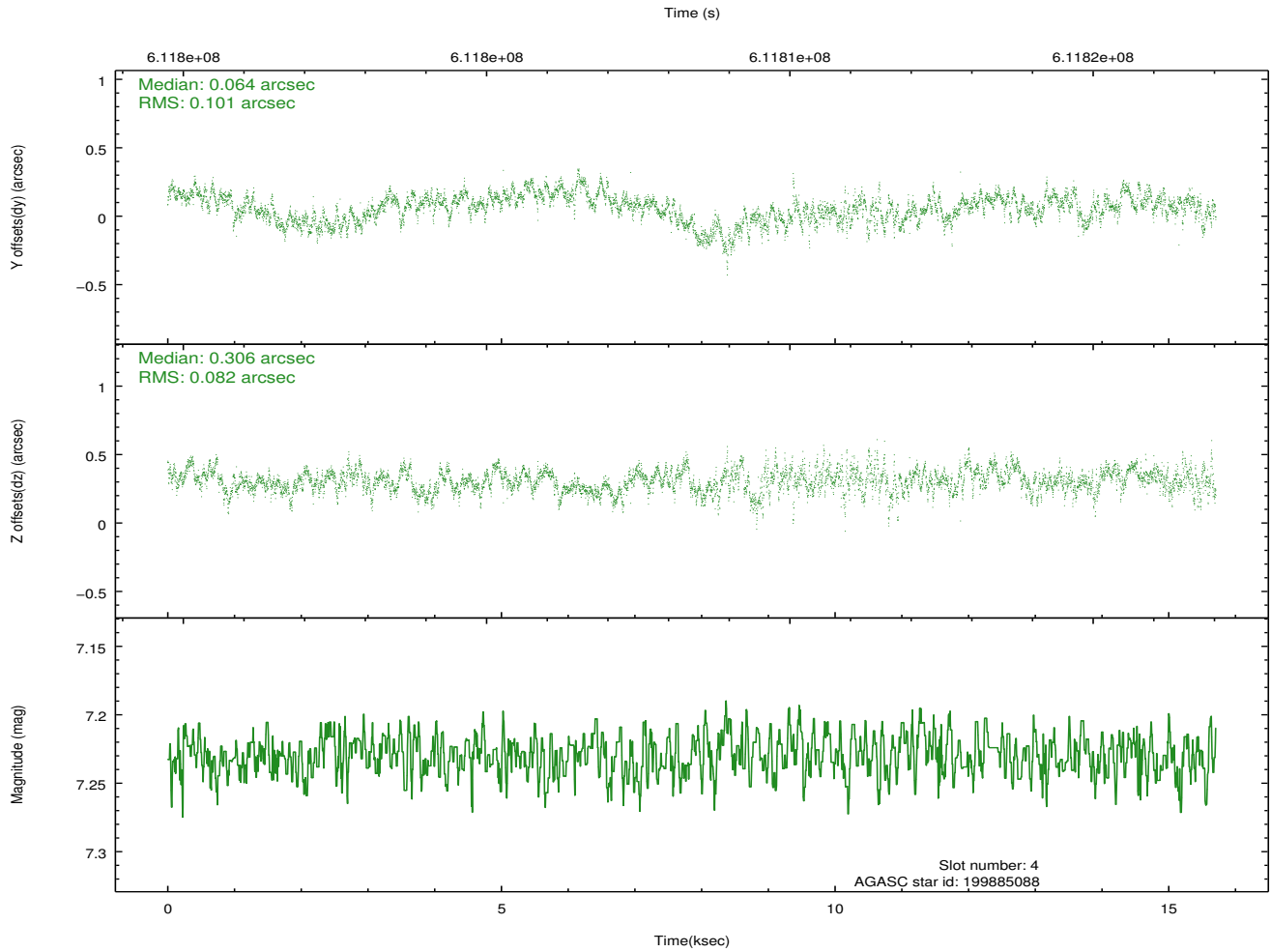
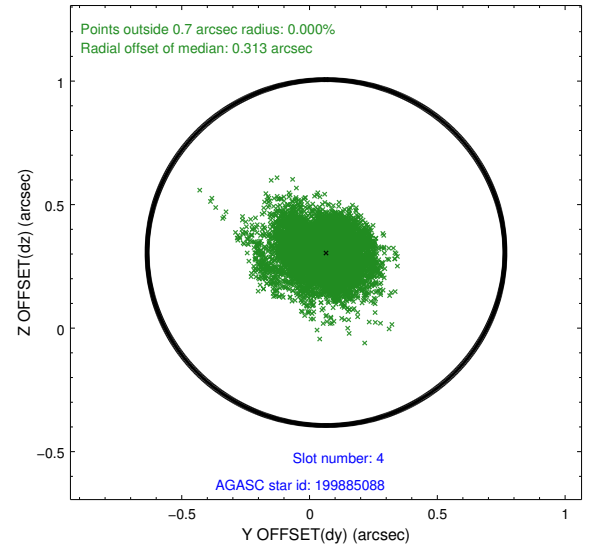
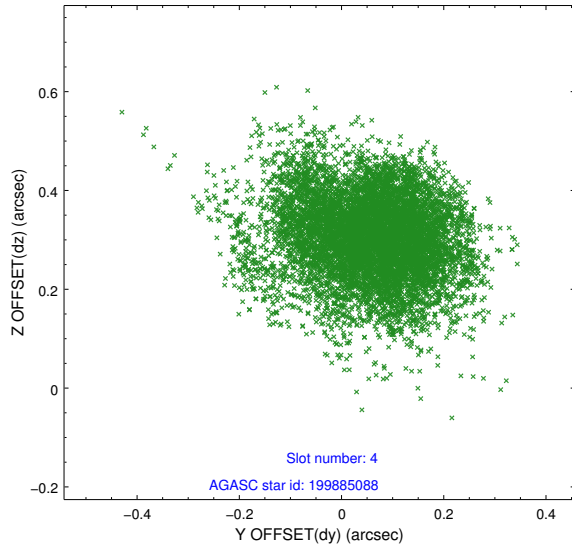
slot	status	used	id	mag	n_pts	med_dy	med_dz	dr1	dr2	ra	dec	mean_y	mean_z
0	FID		ACIS-S-2	7.02	3831	-0.212	-0.094	0.013	0.020	0.000000	0.000000	-770.73	-1741.76
1	FID		ACIS-S-4	7.13	3831	0.512	0.126	0.016	0.023	0.000000	0.000000	2143.09	166.73
2	FID		ACIS-S-5	7.11	3831	-0.334	-0.023	0.011	0.021	0.000000	0.000000	-1823.38	160.47
3	GUIDE	used	199885072	6.97	7663	0.115	0.392	0.172	0.301	253.171421	18.062134	310.51	-2111.15
4	GUIDE	used	199885088	7.23	7661	0.064	0.306	0.135	0.229	252.783574	18.077528	1570.23	-1688.61
5	GUIDE	used	199886640	9.60	7644	-0.066	-0.511	0.262	0.403	252.368625	17.210658	1789.81	1734.07
6	GUIDE	used	199889584	9.06	7651	-0.114	-0.183	0.178	0.304	252.218992	17.069808	2091.52	2391.48
7	OMITTED			0.00	0	0.000	0.000	0.000	0.000	0.000000	0.000000	0.00	0.00

2.4 Star Slots

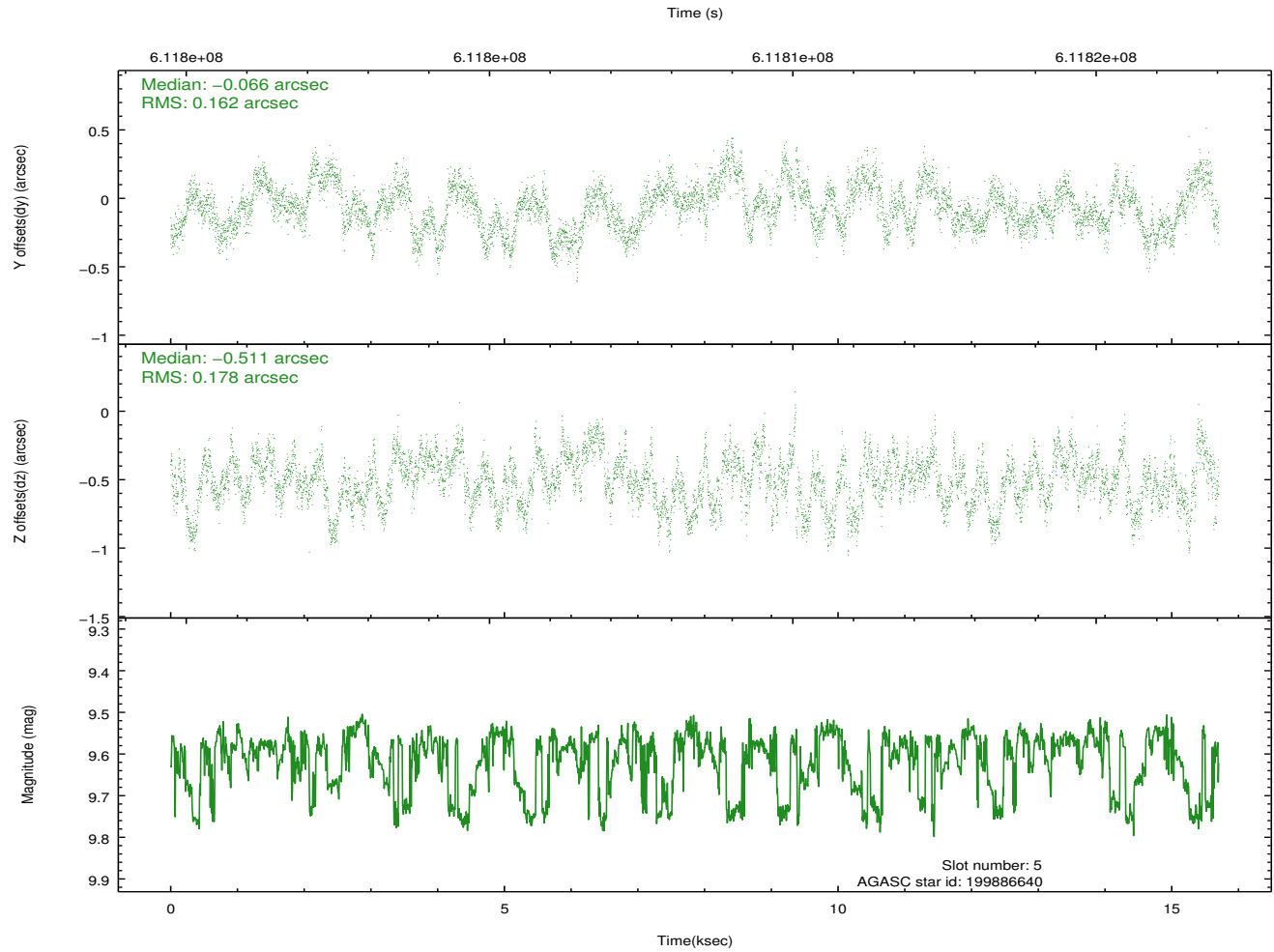
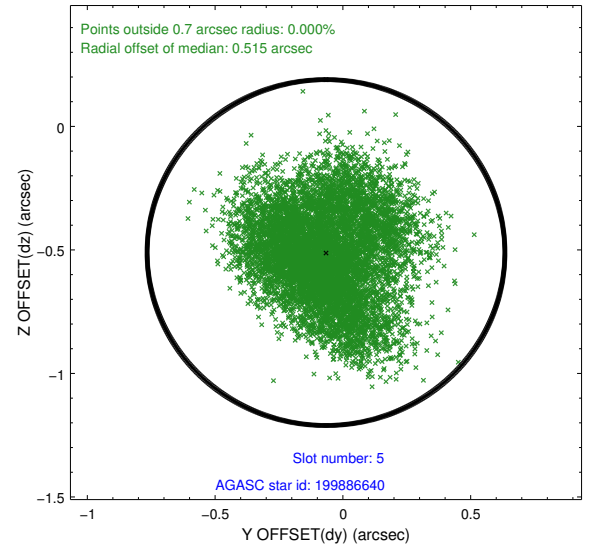
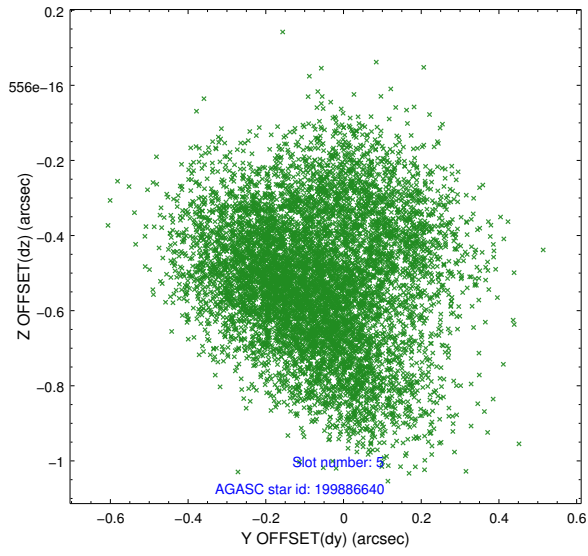
2.4.1 Slot 3



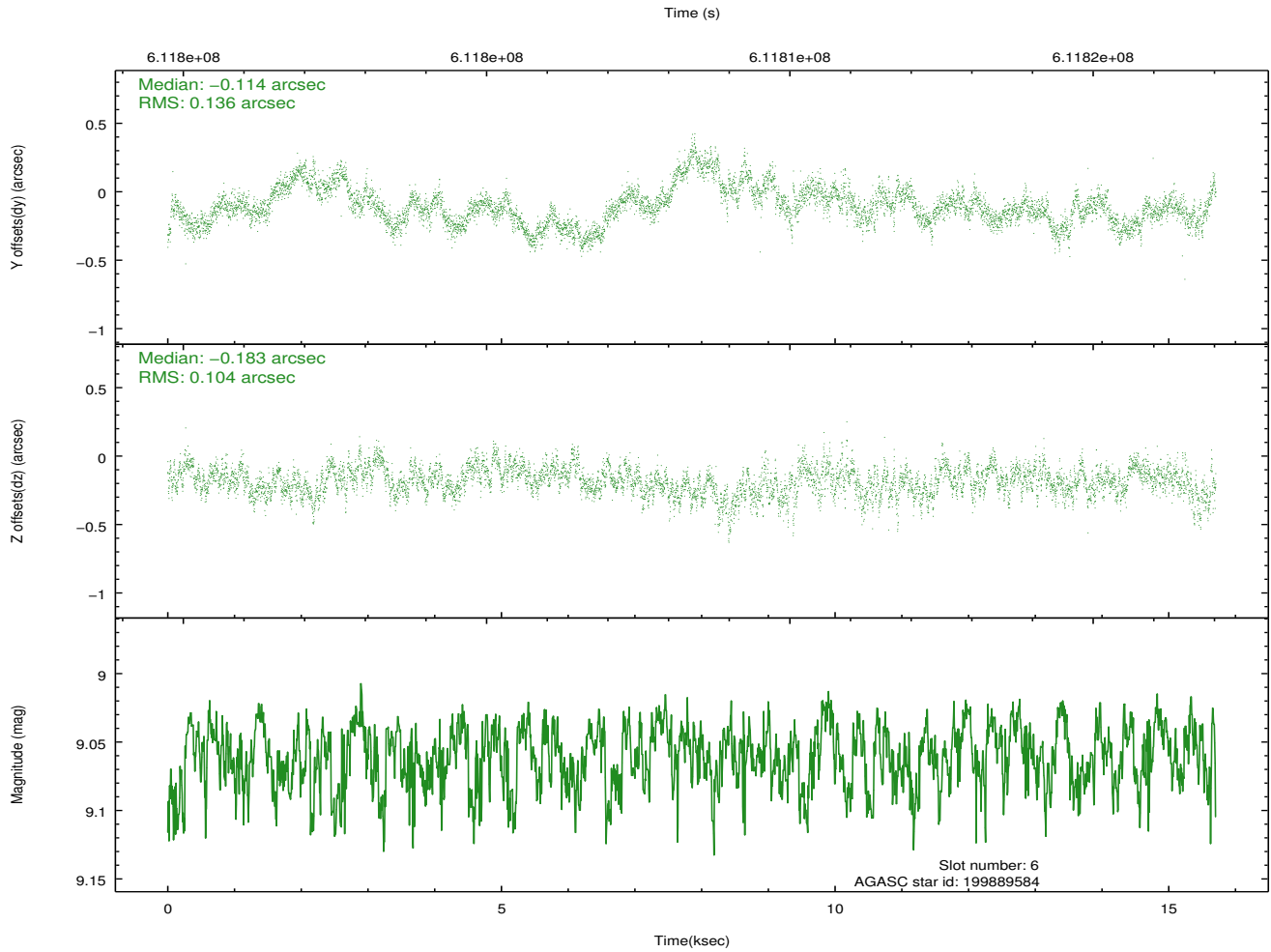
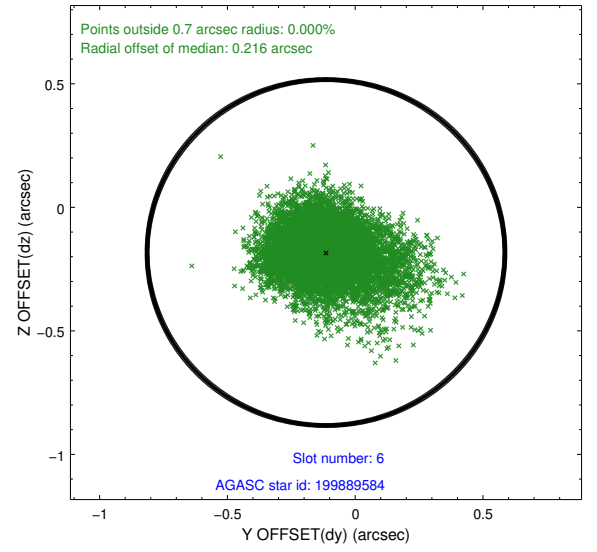
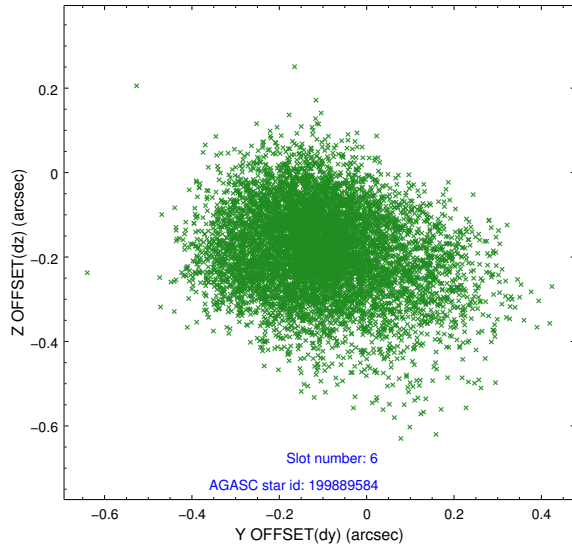
2.4.2 Slot 4



2.4.3 Slot 5

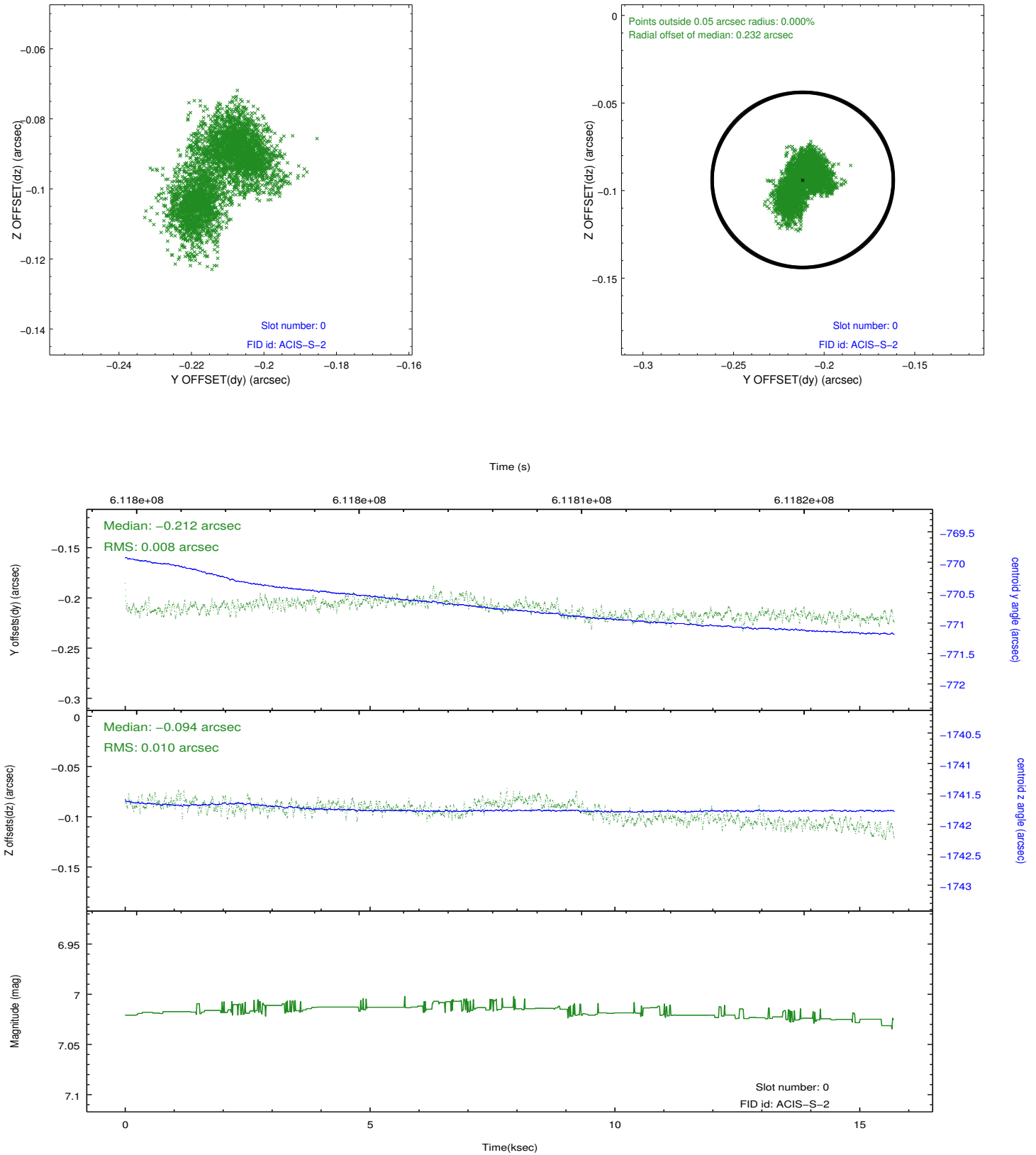


2.4.4 Slot 6

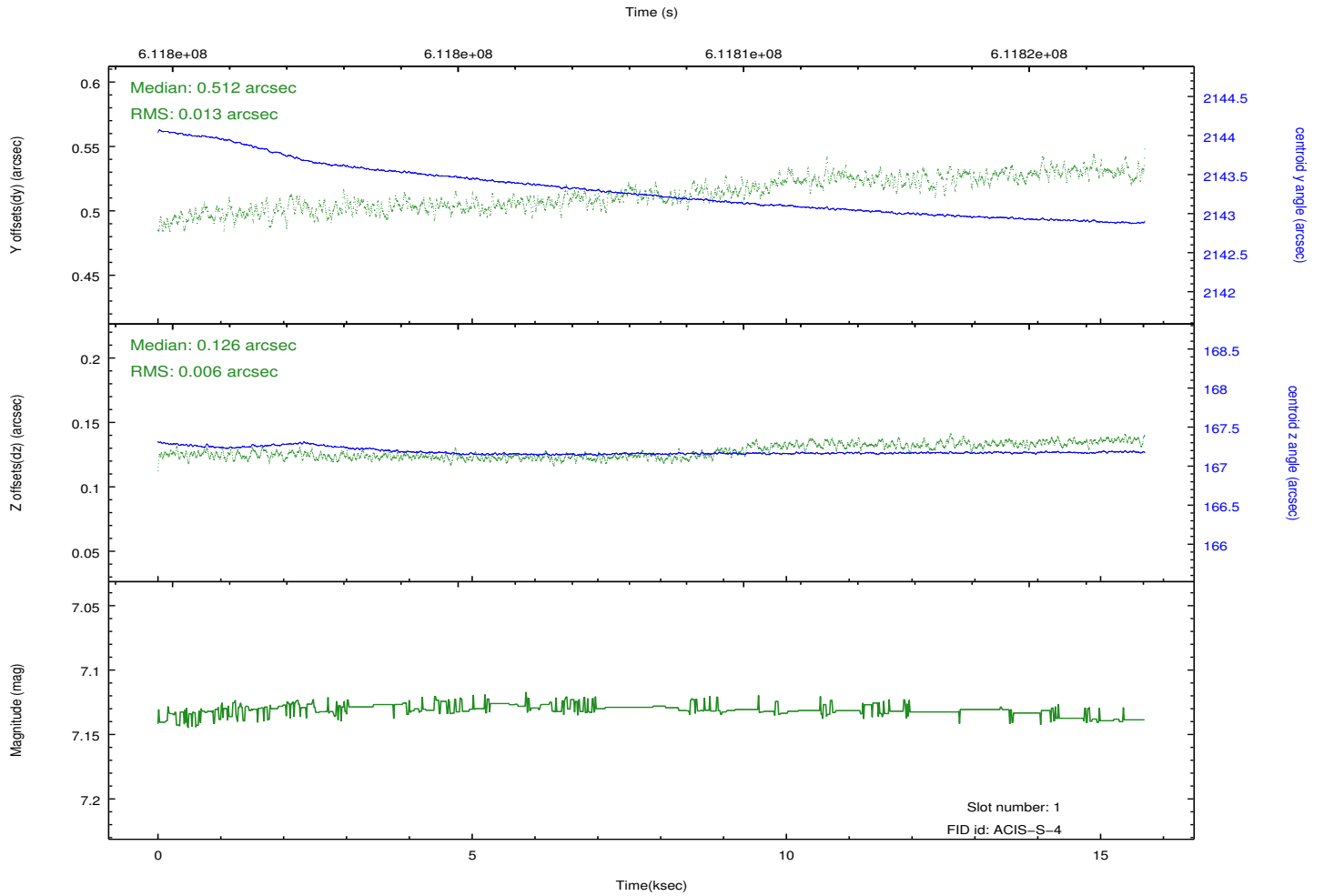
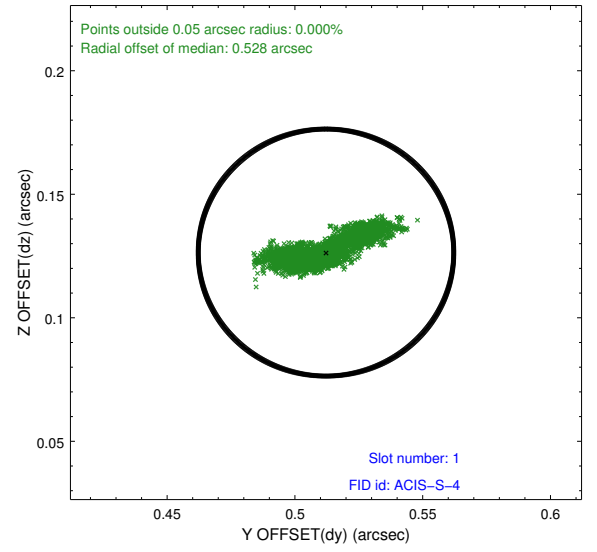
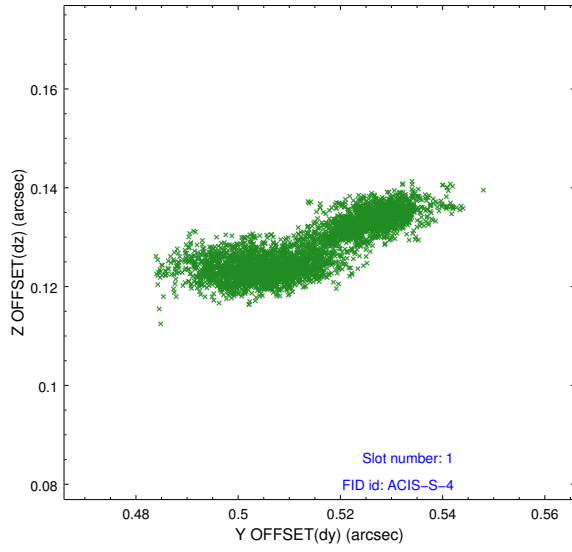


2.5 FID Slots

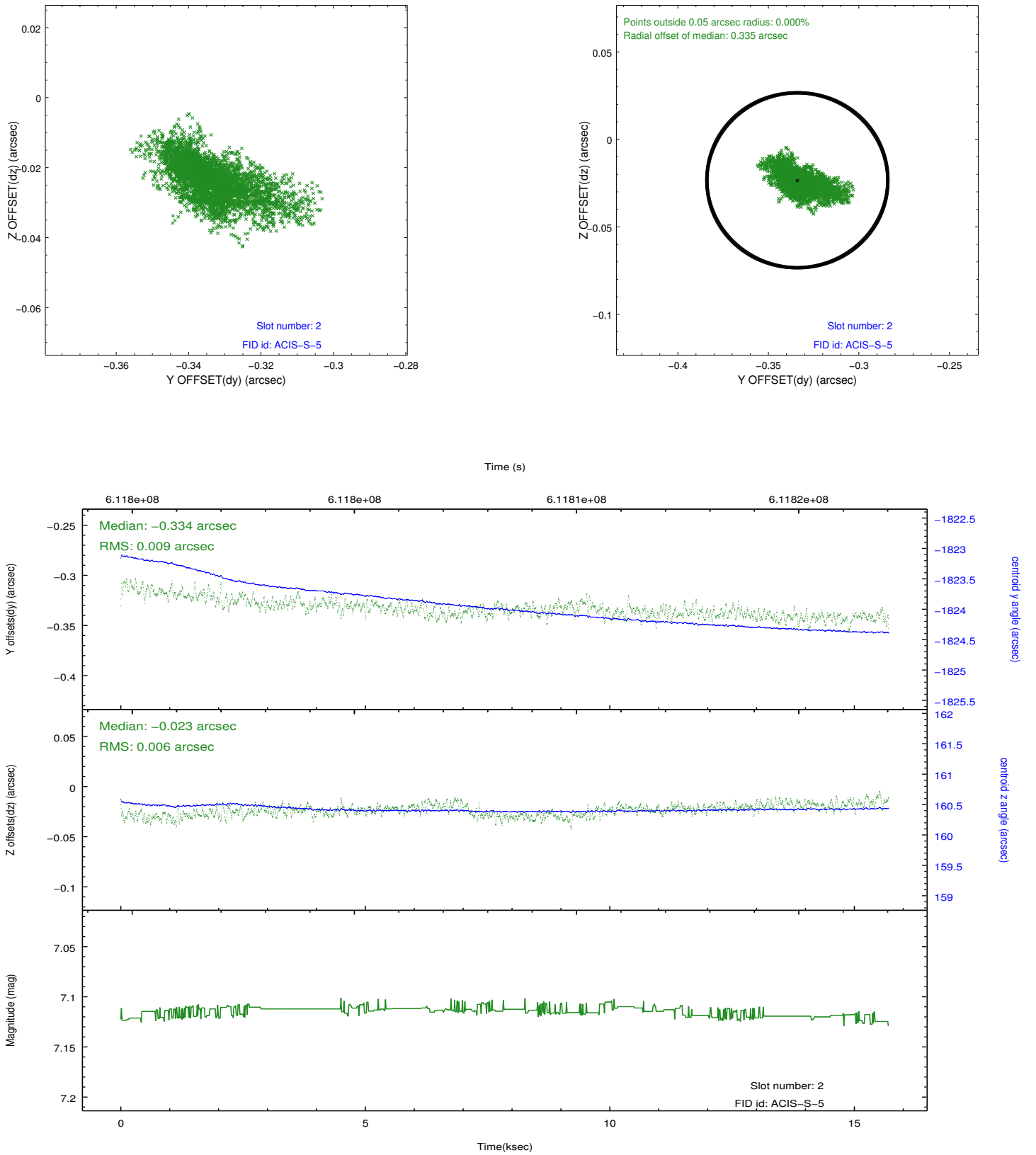
2.5.1 Slot 0



2.5.2 Slot 1



2.5.3 Slot 2



A Summary

A.1 Status

V&V Scientist	Beth Sundheim
V&V Date (YYYY-MM-DD)	2017.05.24
V&V Edition	1
V&V Disposition and Status	OK
V&V Charge Time	15.506200119376

A.2 Comments

The guide star in slot 7 was removed from the aspect solution due to poor data quality. The aspect solution is improved by the removal of this slot from the solution.