

V&V Reference Report

L2 ASCDS Version : 10.4.3.1

Observation 18141 - L2 Version 1
Chandra X-Ray Center

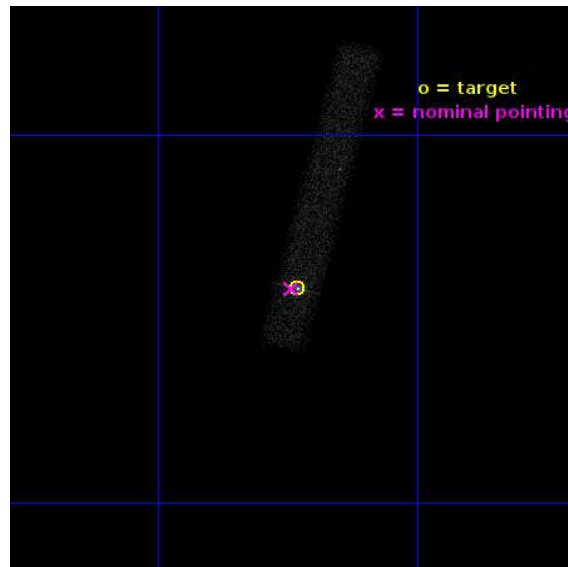
L2 Processing Date : May 14 2016

Contents

1	Front	2
2	OBI	3
2.1	OBI	3
2.1.1	Images	3
2.1.2	Bias	3
2.1.3	Parameters	4
2.1.4	Events	4
2.2	Compared Parameters	5
2.3	Aspect	6
2.4	Star Slots	9
2.4.1	Slot 3	9
2.4.2	Slot 4	10
2.4.3	Slot 5	11
2.4.4	Slot 6	12
2.4.5	Slot 7	13
2.5	FID Slots	14
2.5.1	Slot 0	14
2.5.2	Slot 1	15
2.5.3	Slot 2	16
A	Summary	17
A.1	Status	17
A.2	Comments	17

1 Front

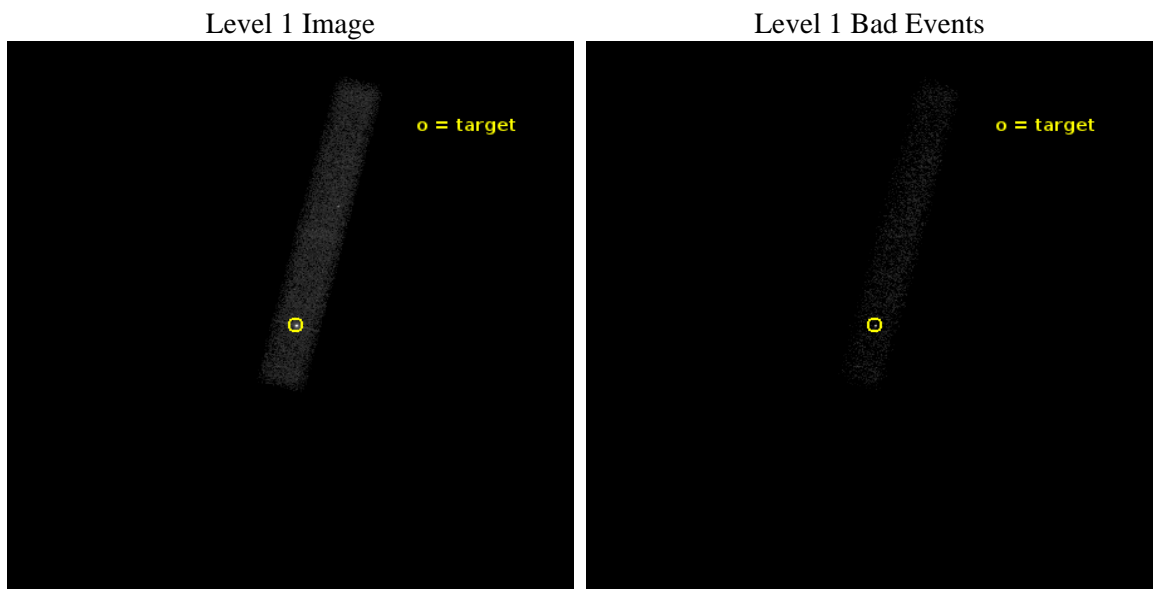
seq_num	703207	Sequence number
obs_id	18141	Observation id
title	Studying Dual AGN Activity and Obscuration in the Final Merger Stage (Proposal title
observer	Dr Michael Koss	Principal investigator
object	ESO 509-G038	Source name
dtcycle	0	
cycle	P	events from which exps? Prim/Second/Both
ra_targ	202.807917	Observer's specified target RA [deg]
dec_targ	-25.402778	Observer's specified target Dec [deg]
ra_nom	202.81076732778	Nominal RA [deg]
dec_nom	-25.402883090363	Nominal Dec [deg]
roll_nom	284.15787858567	Nominal Roll [deg]
revision	1	Processing version of data
ontime	25068.798505664	Sum of GTIs [s]
livetime	22736.077004955	Livetime [s]
ontime7	25068.798505664	Sum of GTIs [s]
l2events	30918	Number of level 2 events



2 OBI

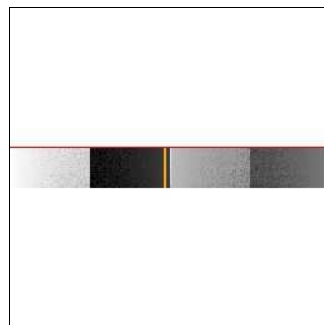
2.1 OBI

2.1.1 Images



2.1.2 Bias

Chip 7



2.1.3 Parameters

obi_num	0	Obi number	sched_exp_time	25000.000000	[s] Scheduled observation exposure time
ascdsver	10.4.3.1	Processing system revision	ontime	25068.798505664	Sum of GTIs [s]
caldsver	4.7.1	 	ontime7	25068.798505664	Sum of GTIs [s]
date	2016-05-14T14:30:16	Date and time of file creation	l1events	46767	Number of level 1 events
revision	1	Processing version of data			

2.1.4 Events

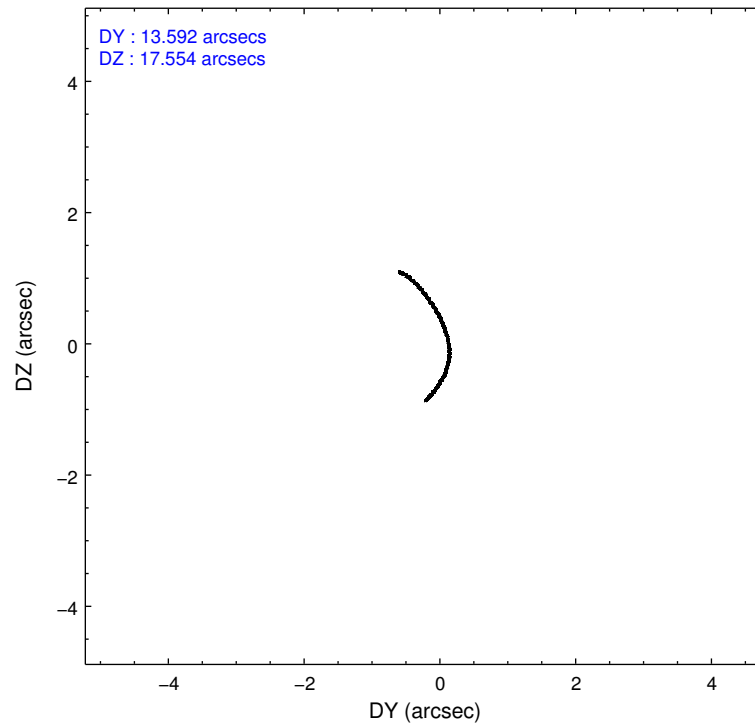
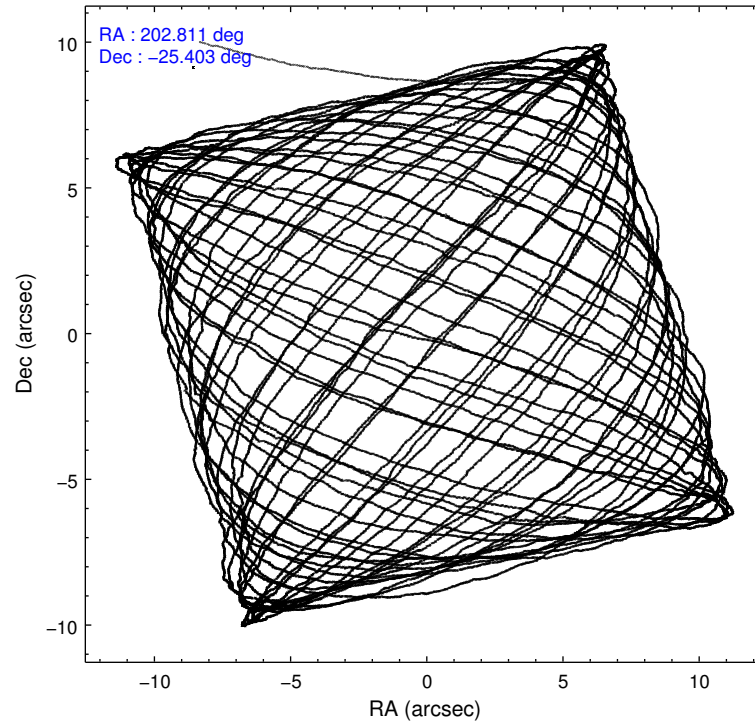
	ccd 7
level 1 events	46767
rejected events	15244
rejected %	32%

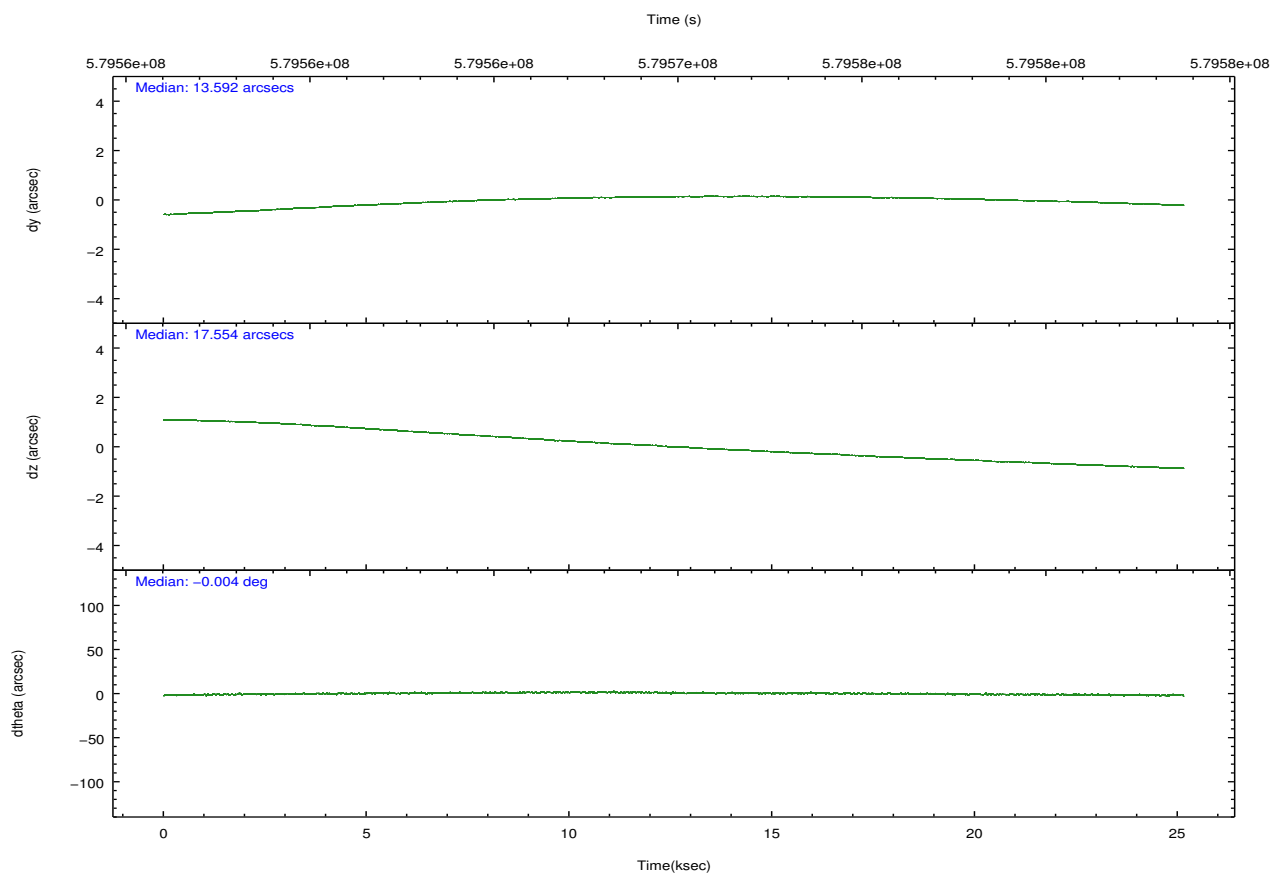
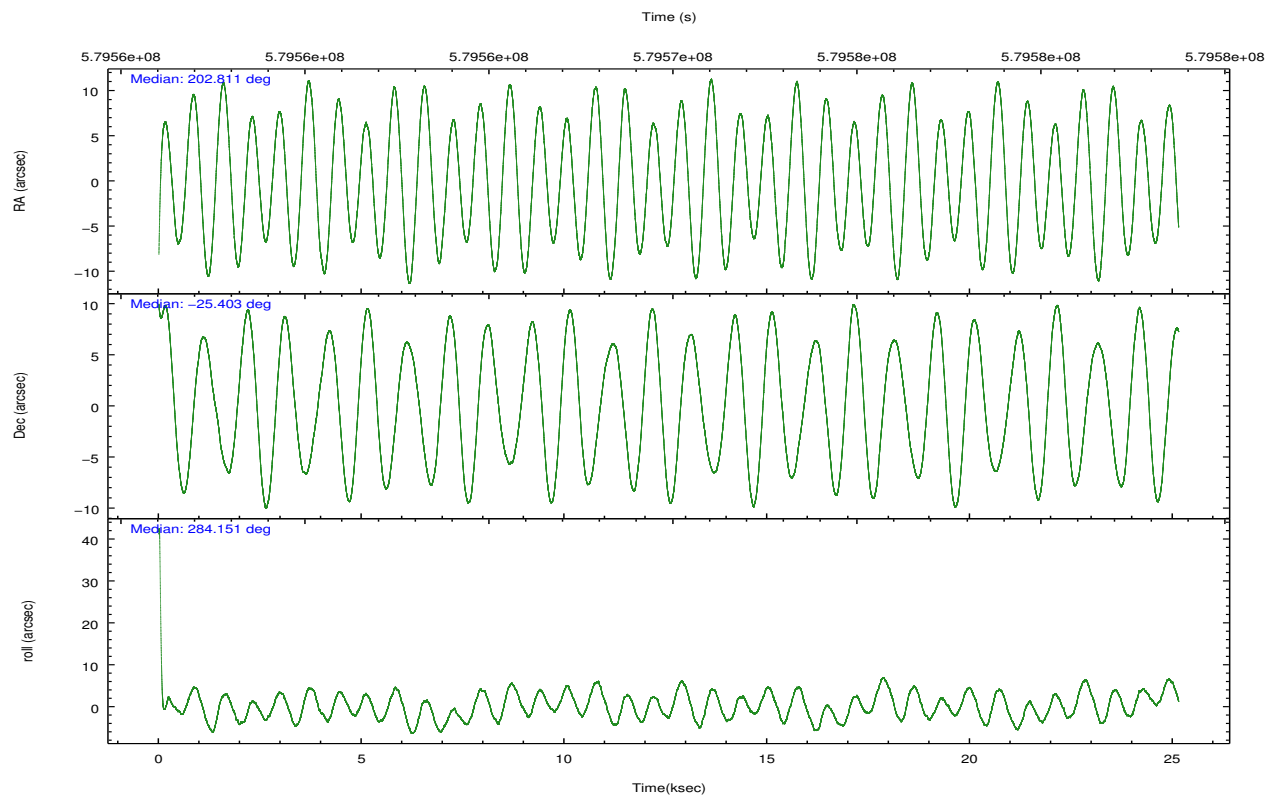
	ccd 7
grade 0 events	5765
	12%
grade 1 events	152
	0%
grade 2 events	7239
	15%
grade 3 events	3838
	8%
grade 4 events	3764
	8%
grade 5 events	3439
	7%
grade 6 events	10917
	23%
grade 7 events	11653
	24%

2.2 Compared Parameters

Parameter	Planned	Actual	Parameter	Planned	Actual
Instrument	ACIS	ACIS	Obspar format version number	7	7
Detector	ACIS-7	ACIS-7	Obspar file type	PREDICTED	ACTUAL
Grating	NONE	NONE	Obspar update status	NONE	UPDATED
Data mode	FAINT	FAINT	Number of optional ACIS chips dropped	0	0
Observation mode	POINTING	POINTING	On-chip summing requested	N	N
[deg] Pointing RA	202.789302	202.8107673277846	Subarray requested	CUSTOM	1/8
[deg] Pointing Dec	-25.383470	-25.40288309036251	Subarray start row	449	449
[deg] Pointing Roll	283.992015	284.1578785856678	Subarray row count	128	128
[mm] SIM focus pos	-0.684267	-0.6828225247311905	Alternating exposures requested	N	N
[mm] SIM defocus	0	0.001444936568705701	[s] Primary exposure time	0.000000	0.4
[mm] SIM translation stage pos	-190.132523	-190.1425803651734			
[mm] SIM translation stage offset	0	0.01005778216563158			
[s] Observation start time (MET)	579557472.184000	579556187.97189			
Observation start date	2016-05-13T20:10:04	2016-05-13T19:49:47			
[s] Observation end time (MET)	579582472.184000	579583576.48595			
Observation end date	2016-05-14T03:06:44	2016-05-14T03:26:16			
Read mode	TIMED	TIMED			

2.3 Aspect



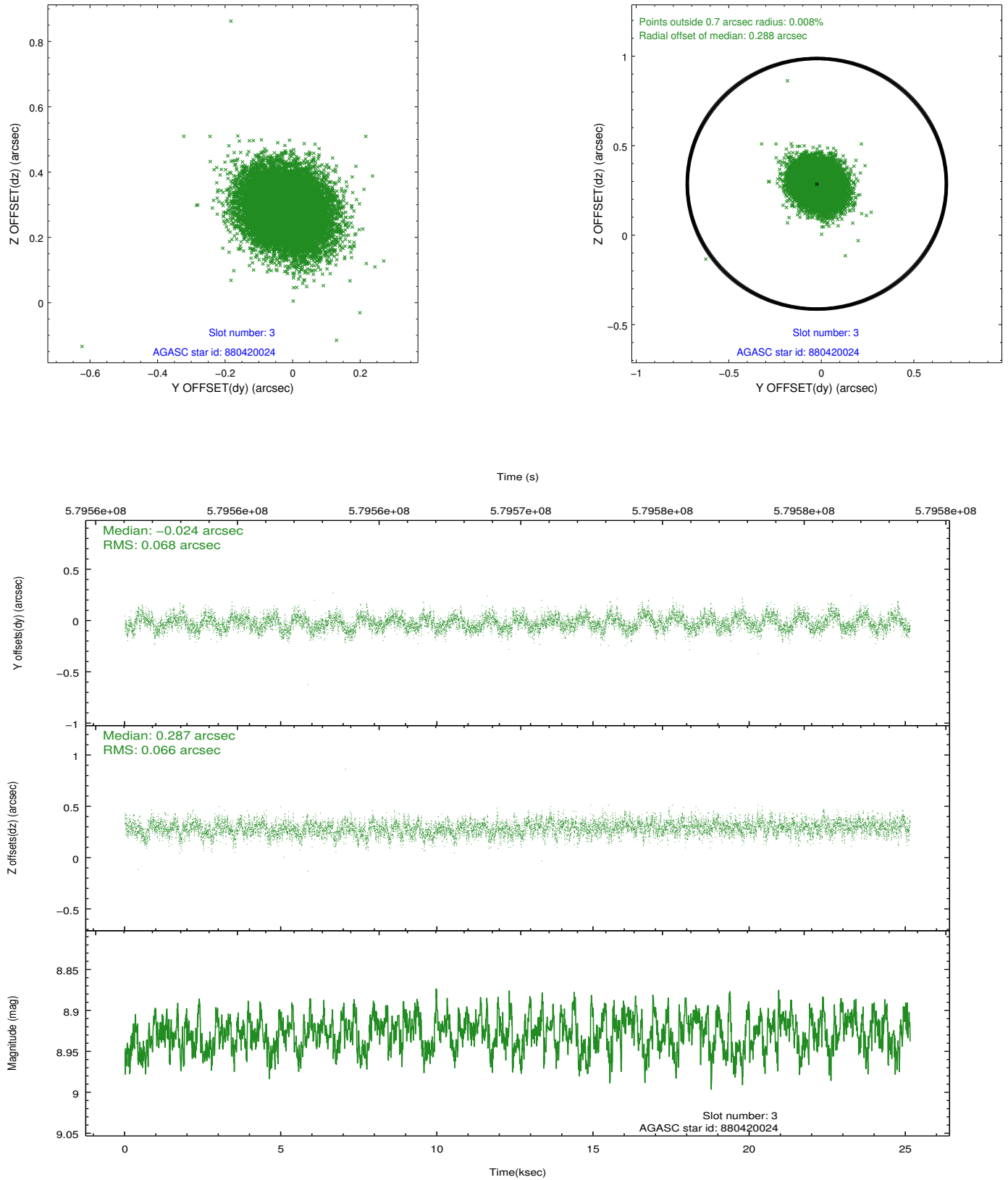


Slot Statistics

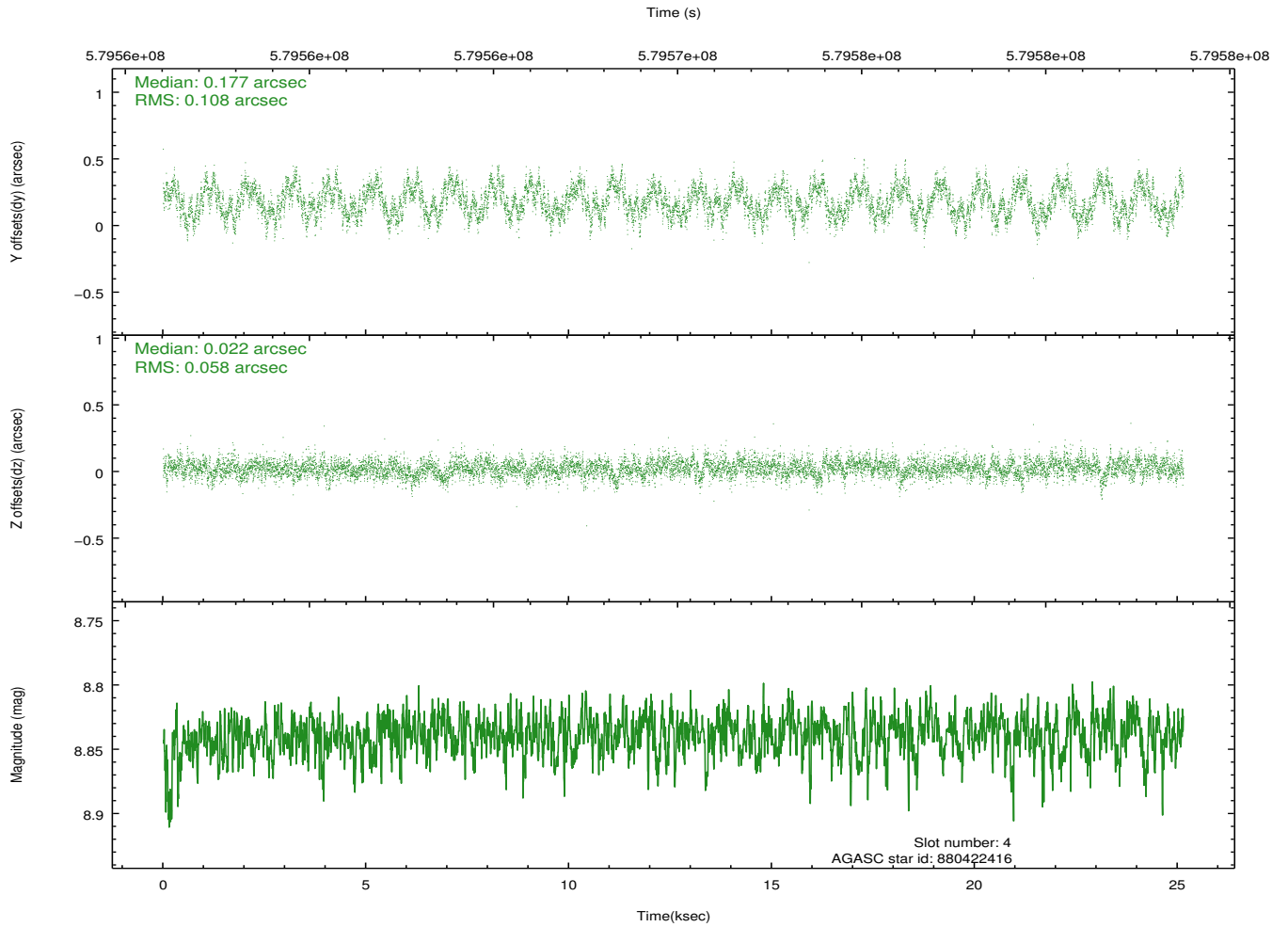
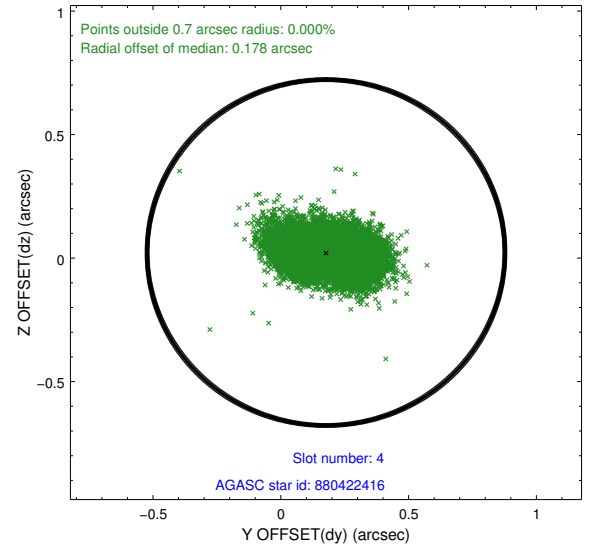
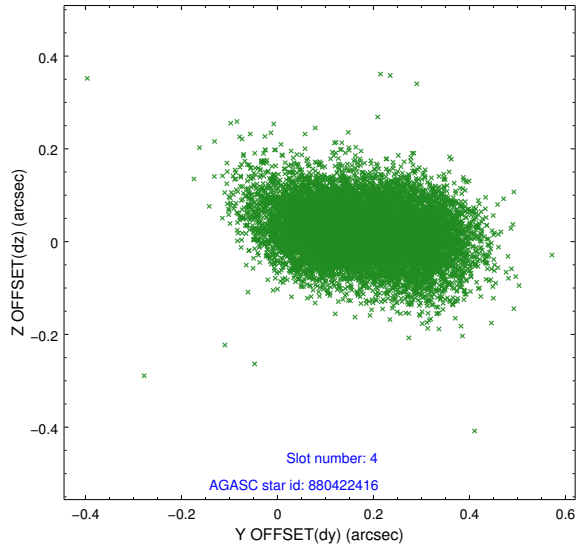
slot	status	used	id	mag	n_pts	med_dy	med_dz	dr1	dr2	ra	dec	mean_y	mean_z
0	FID		ACIS-S-2	7.10	6133	-0.127	-0.105	0.020	0.031	0.000000	0.000000	-766.58	-1739.12
1	FID		ACIS-S-4	7.22	6133	0.402	0.089	0.013	0.032	0.000000	0.000000	2147.16	169.44
2	FID		ACIS-S-5	7.23	6132	-0.304	0.026	0.019	0.028	0.000000	0.000000	-1819.45	163.17
3	GUIDE	used	880420024	8.93	12257	-0.024	0.287	0.100	0.161	202.295577	-25.728136	820.79	-1854.41
4	GUIDE	used	880422416	8.84	12254	0.177	0.022	0.131	0.213	202.480125	-26.058786	2119.42	-1558.31
5	GUIDE	used	880544528	9.01	12258	-0.133	0.029	0.105	0.170	203.168041	-24.807194	-1711.69	1701.44
6	GUIDE	used	880548560	9.09	12256	0.132	-0.168	0.119	0.188	203.279390	-25.537799	927.25	1409.72
7	GUIDE	used	880550792	8.28	12264	-0.152	-0.166	0.089	0.138	203.037195	-26.004337	2362.05	236.44

2.4 Star Slots

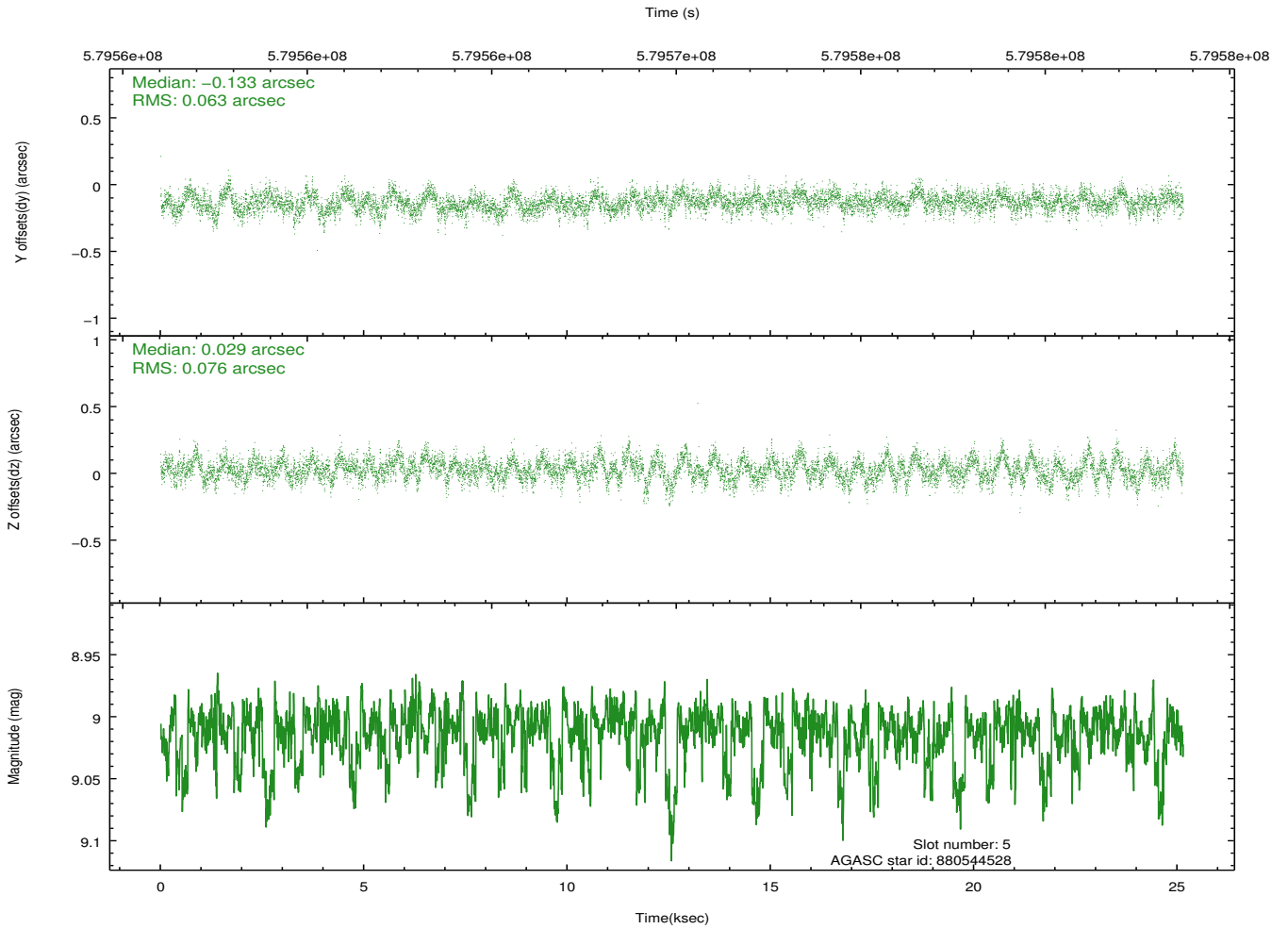
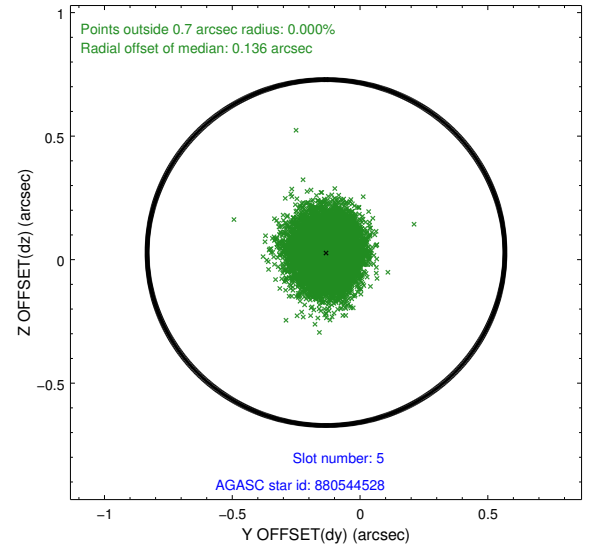
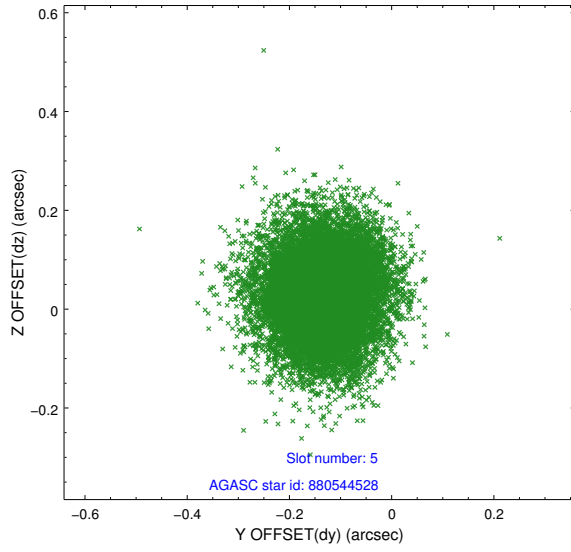
2.4.1 Slot 3



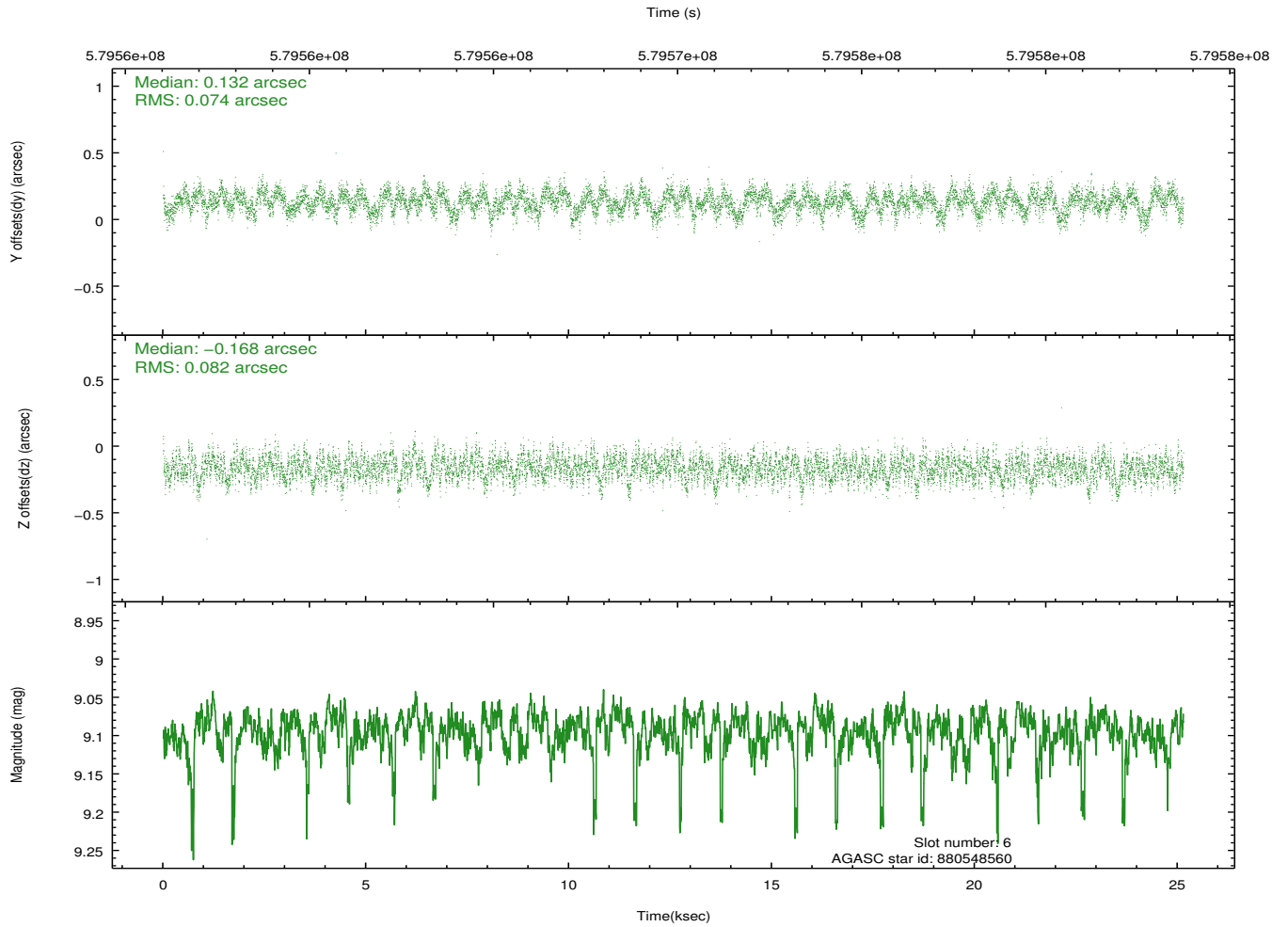
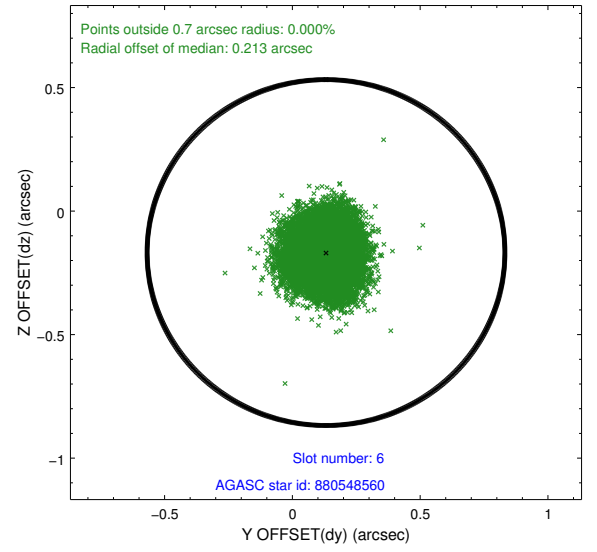
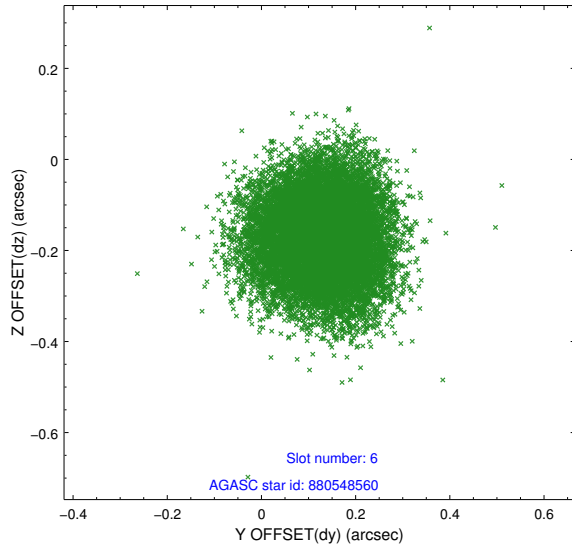
2.4.2 Slot 4



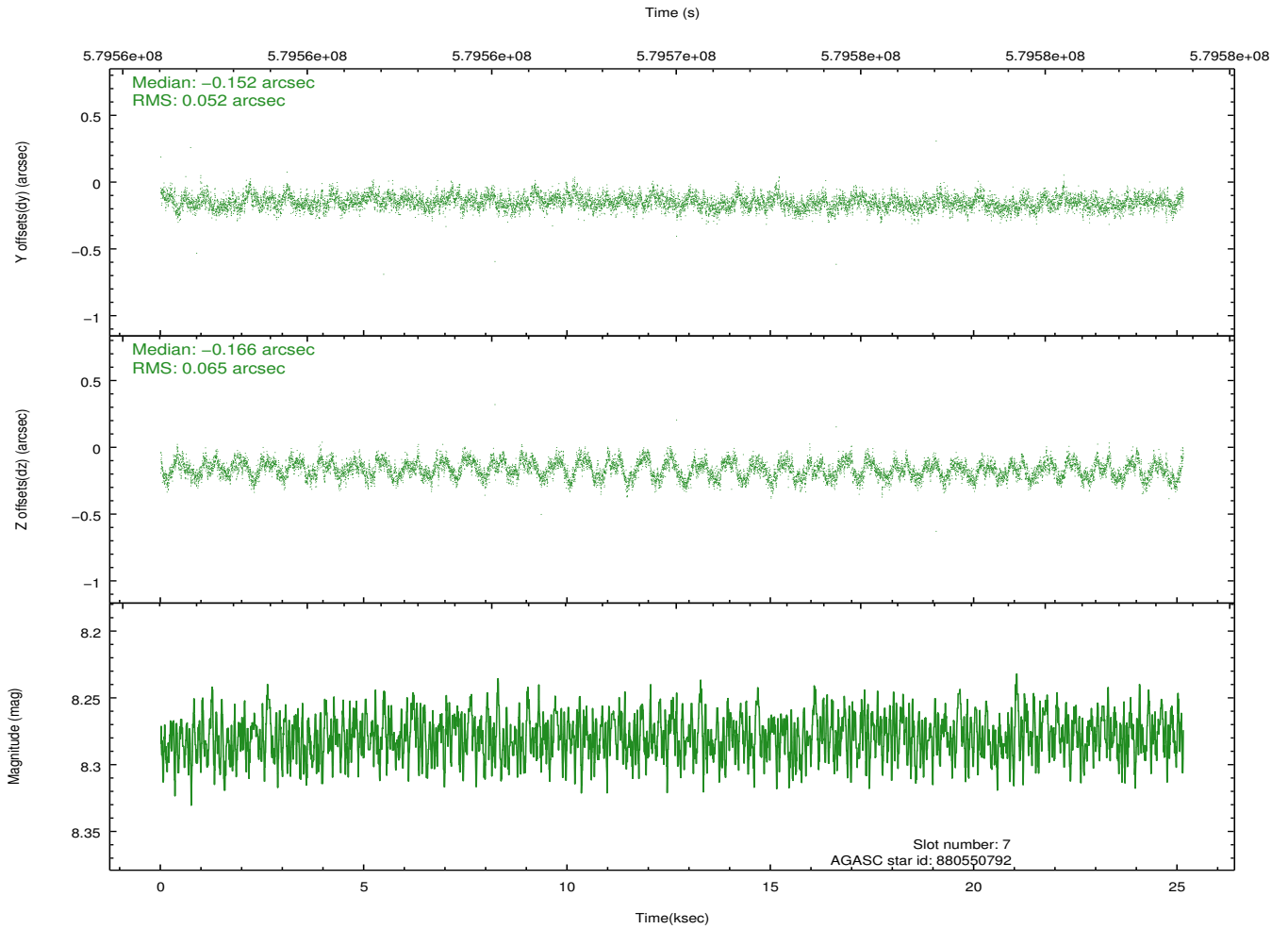
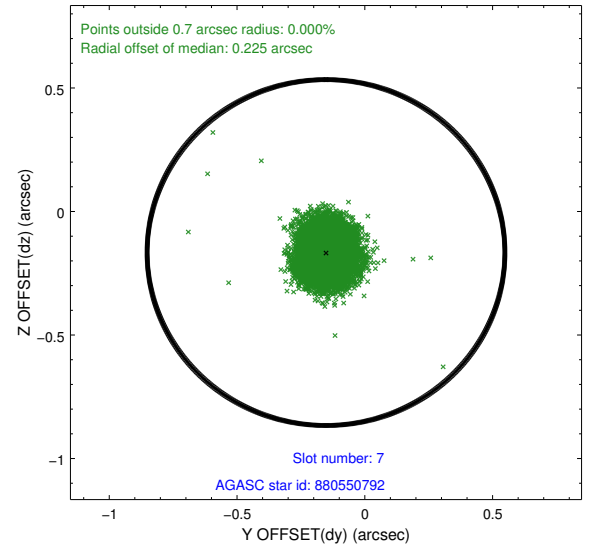
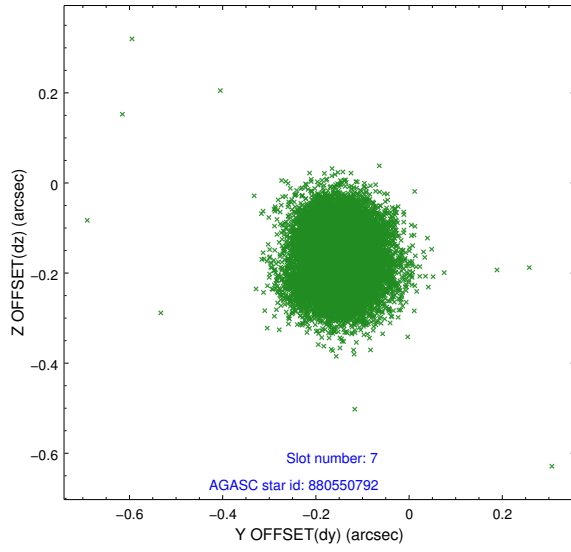
2.4.3 Slot 5



2.4.4 Slot 6

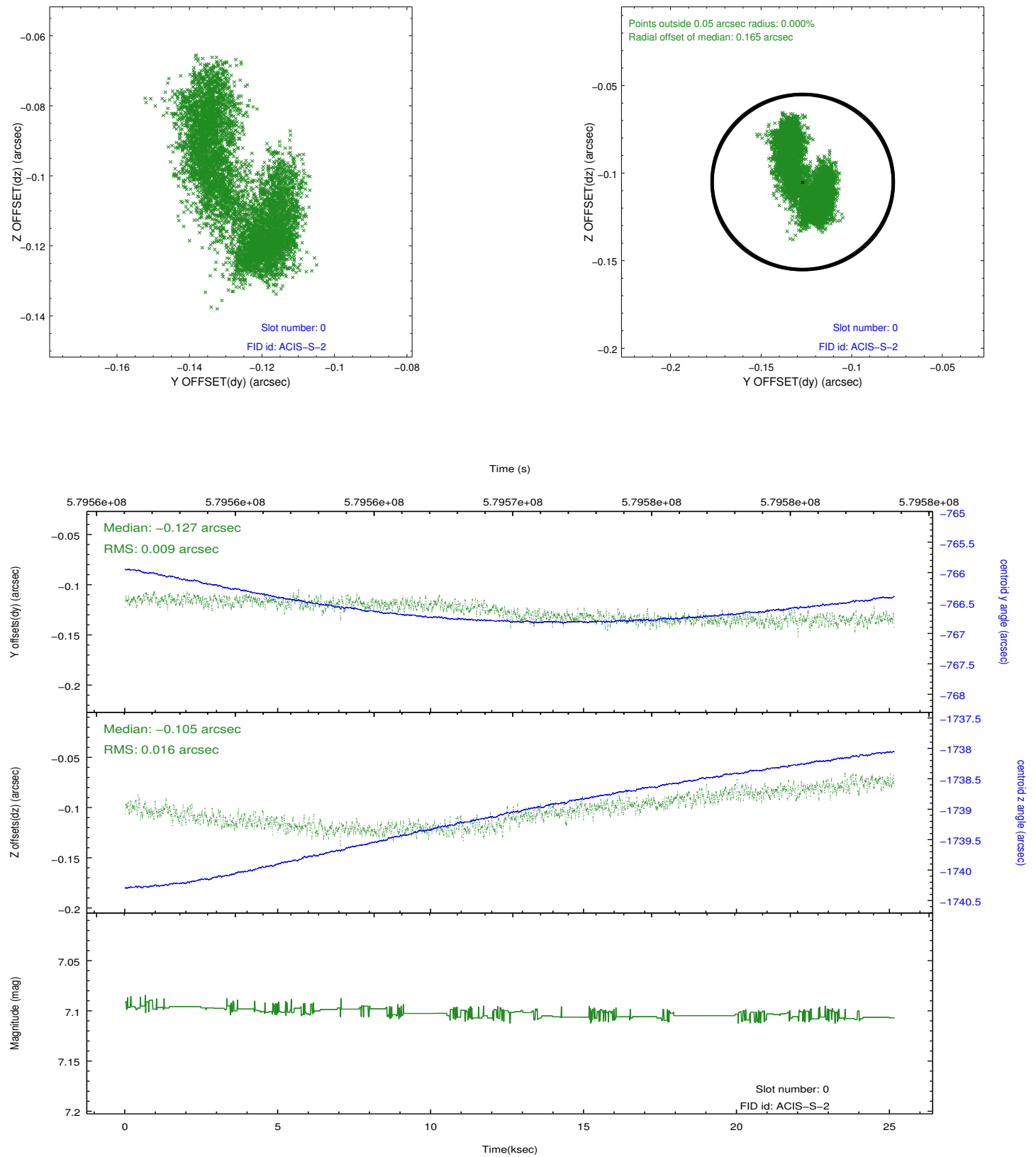


2.4.5 Slot 7

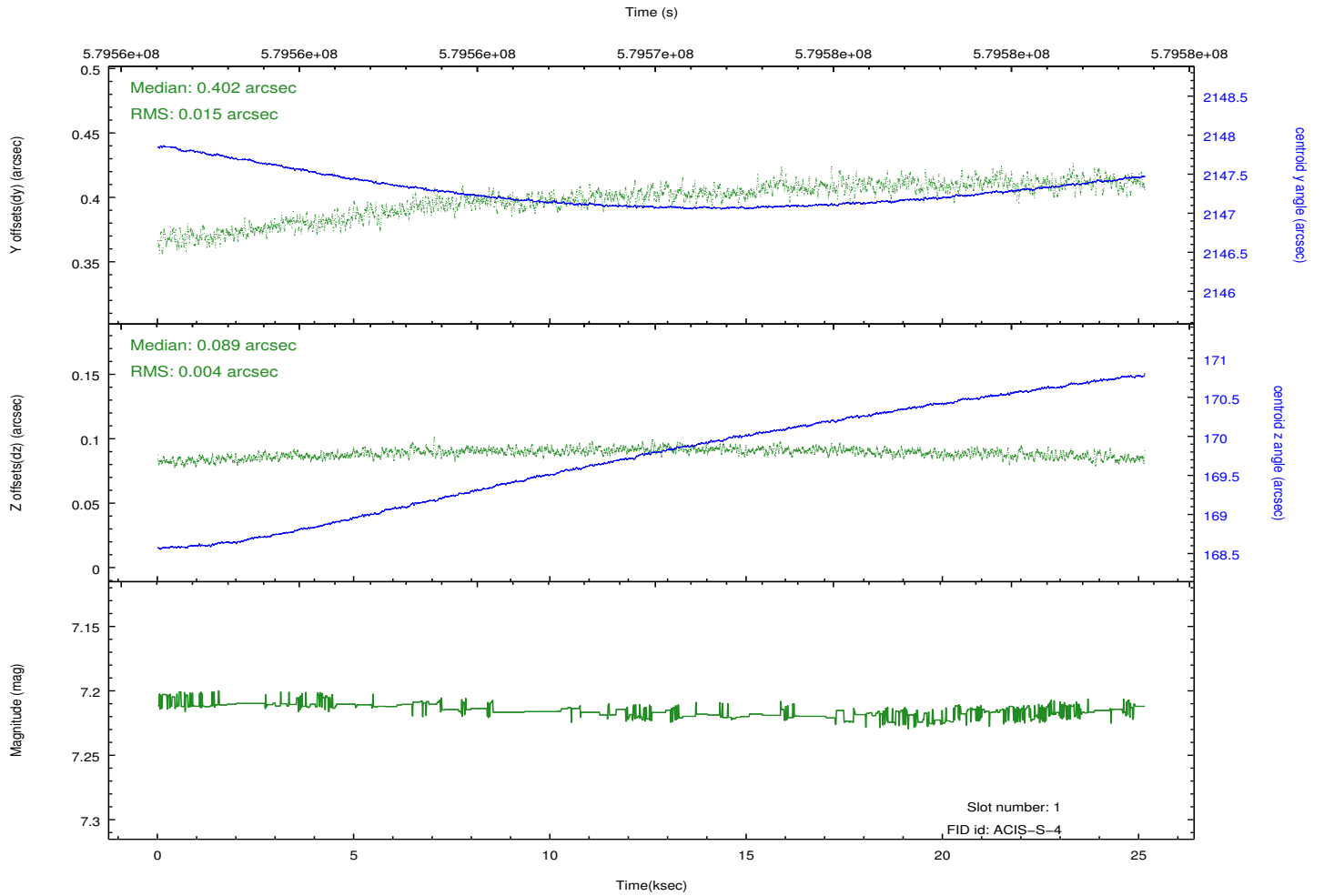
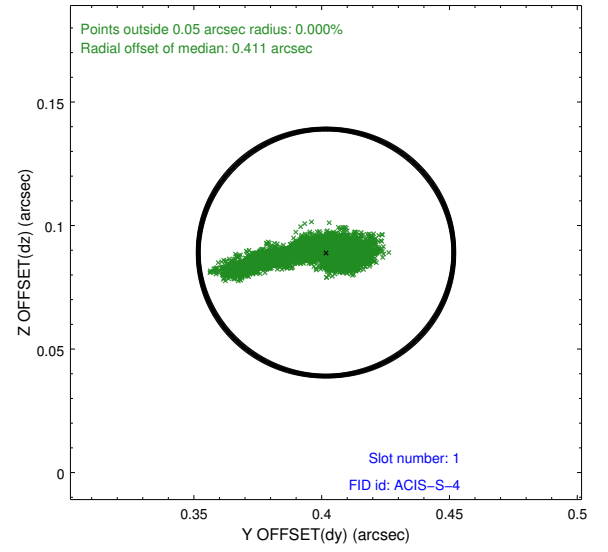
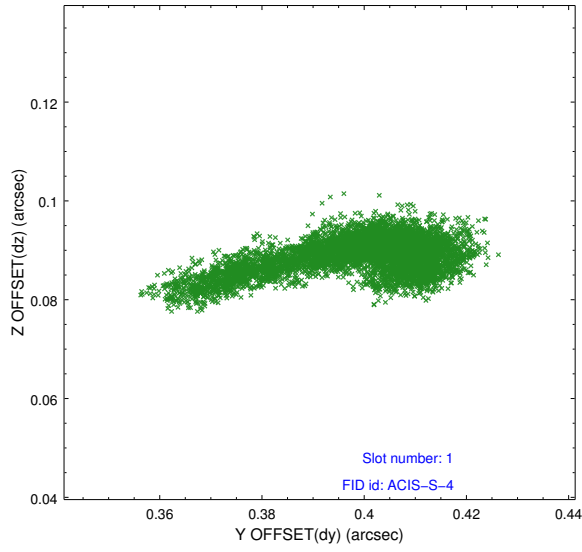


2.5 FID Slots

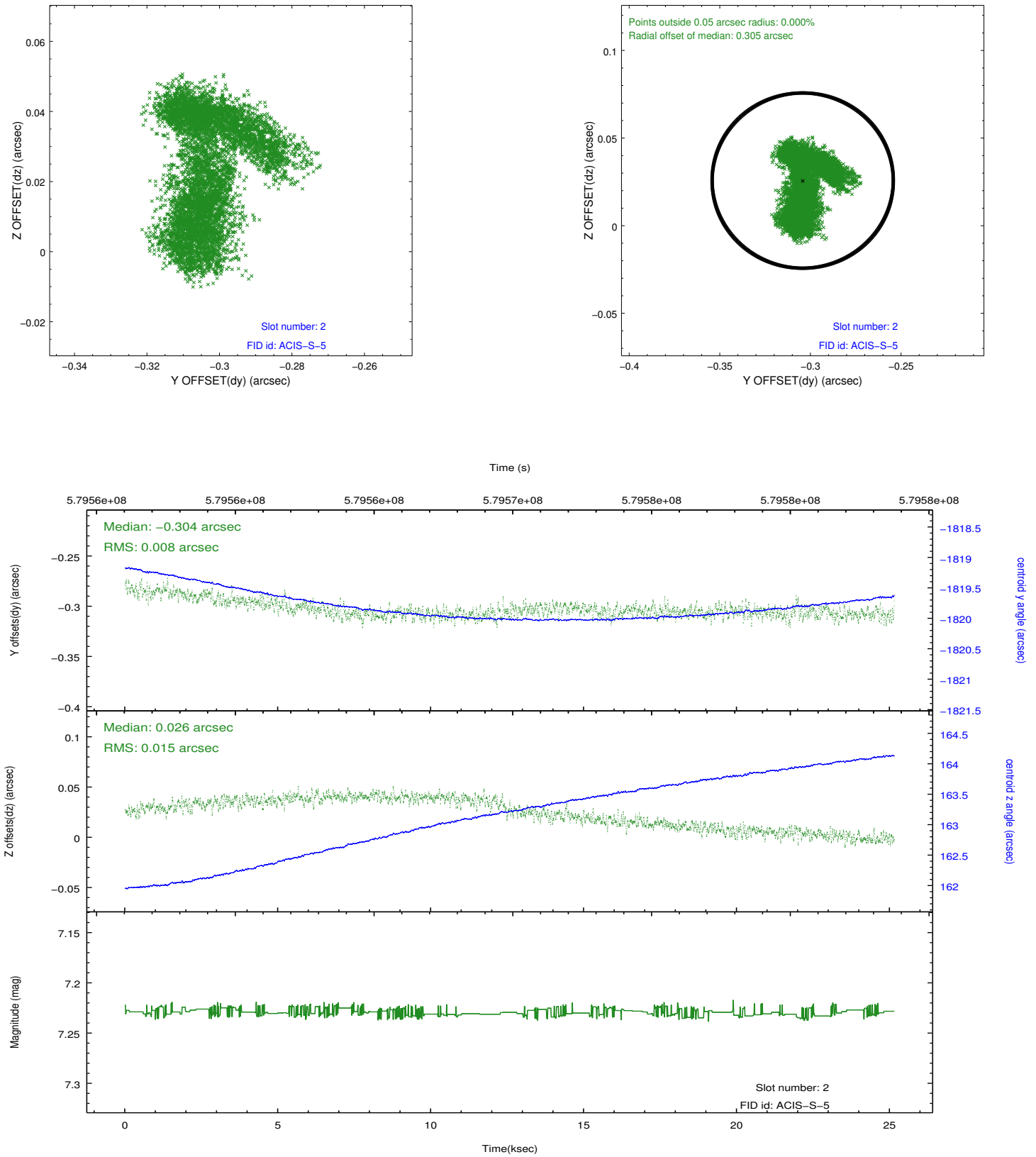
2.5.1 Slot 0



2.5.2 Slot 1



2.5.3 Slot 2



A Summary

A.1 Status

V&V Scientist	Joy Nichols
V&V Date (YYYY-MM-DD)	2016.05.16
V&V Edition	1
V&V Disposition and Status	OK
V&V Charge Time	25.068798505664

A.2 Comments