

V&V Reference Report

L2 ASCDS Version : 10.4.3.1

Observation 18068 - L2 Version 1
Chandra X-Ray Center

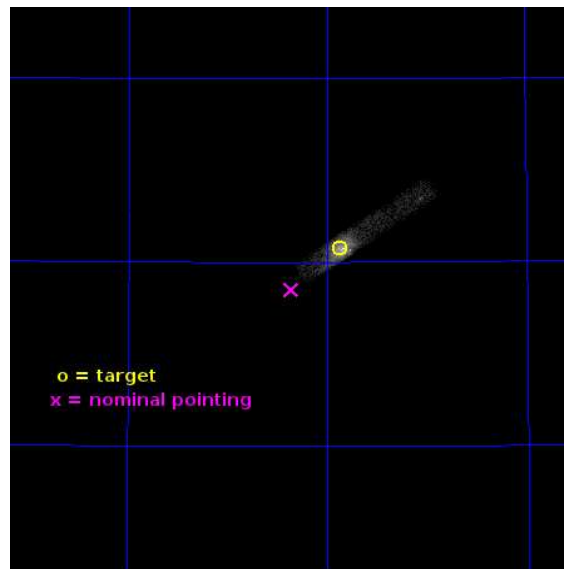
L2 Processing Date : Apr 27 2016

Contents

1	Front	2
2	OBI	3
2.1	OBI	3
2.1.1	Images	3
2.1.2	Bias	3
2.1.3	Parameters	4
2.1.4	Events	4
2.2	Compared Parameters	5
2.3	Aspect	6
2.4	Star Slots	9
2.4.1	Slot 3	9
2.4.2	Slot 4	10
2.4.3	Slot 5	11
2.4.4	Slot 6	12
2.4.5	Slot 7	13
2.5	FID Slots	14
2.5.1	Slot 0	14
2.5.2	Slot 1	15
2.5.3	Slot 2	16
A	Summary	17
A.1	Status	17
A.2	Comments	17

1 Front

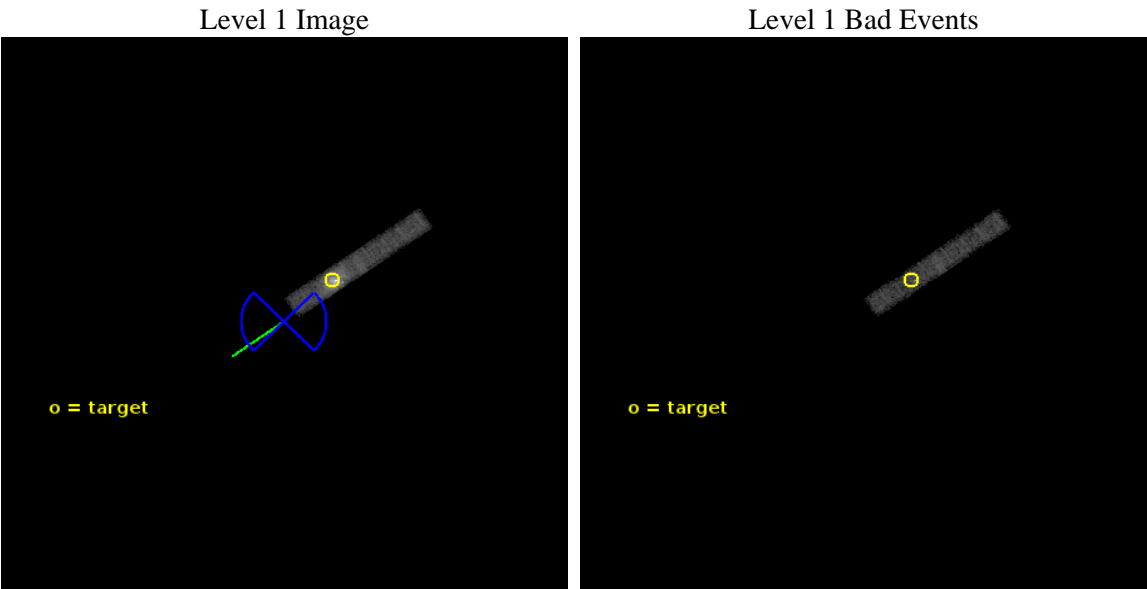
seq_num	601250	Sequence number
obs_id	18068	Observation id
title	Timing and Spectral Studies of the Extreme Binary Population in M82	
observer	Professor Fiona Harrison	Principal investigator
object	M82 offset 2	Source name
dtcycle	0	
cycle	P	events from which exps? Prim/Second/Both
ra_targ	148.969583	Observer's specified target RA [deg]
dec_targ	69.679444	Observer's specified target Dec [deg]
ra_nom	149.09019225281	Nominal RA [deg]
dec_nom	69.641745298061	Nominal Dec [deg]
roll_nom	235.09559160435	Nominal Roll [deg]
revision	1	Processing version of data
ontime	25102.456273198	Sum of GTIs [s]
livetime	23198.336789515	Livetime [s]
ontime1	25102.456273198	Sum of GTIs [s]
l2events	38338	Number of level 2 events



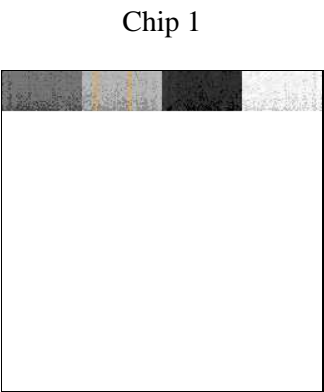
2 OBI

2.1 OBI

2.1.1 Images



2.1.2 Bias



2.1.3 Parameters

obi_num	0	Obi number	sched_exp_time	25000.000000	[s] Scheduled observation exposure time
ascdsver	10.4.3.1	Processing system revision	ontime	25102.456273198	Sum of GTIs [s]
caldsver	4.7.1	 	ontime1	25102.456273198	Sum of GTIs [s]
date	2016-04-27T04:57:47	Date and time of file creation	l1events	64738	Number of level 1 events
revision	1	Processing version of data			

2.1.4 Events

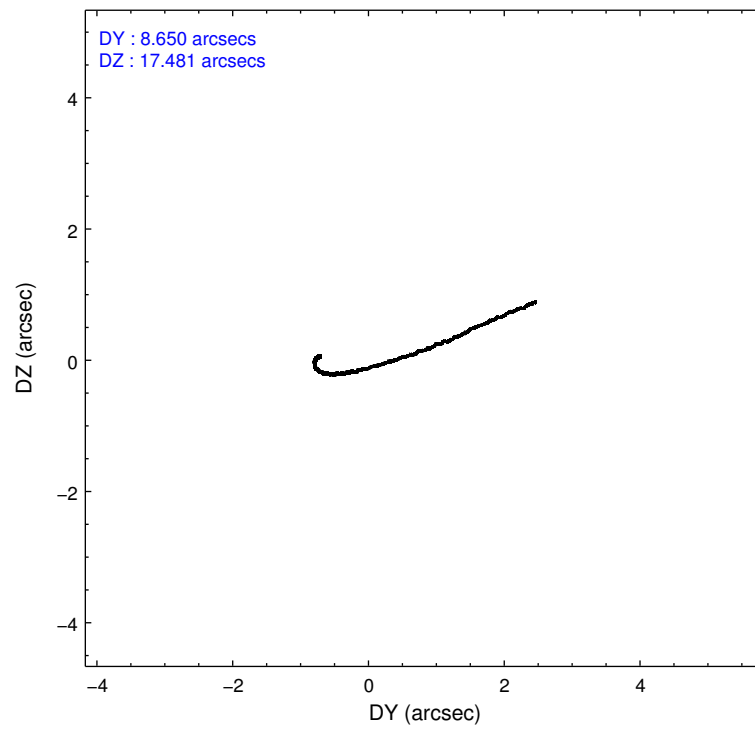
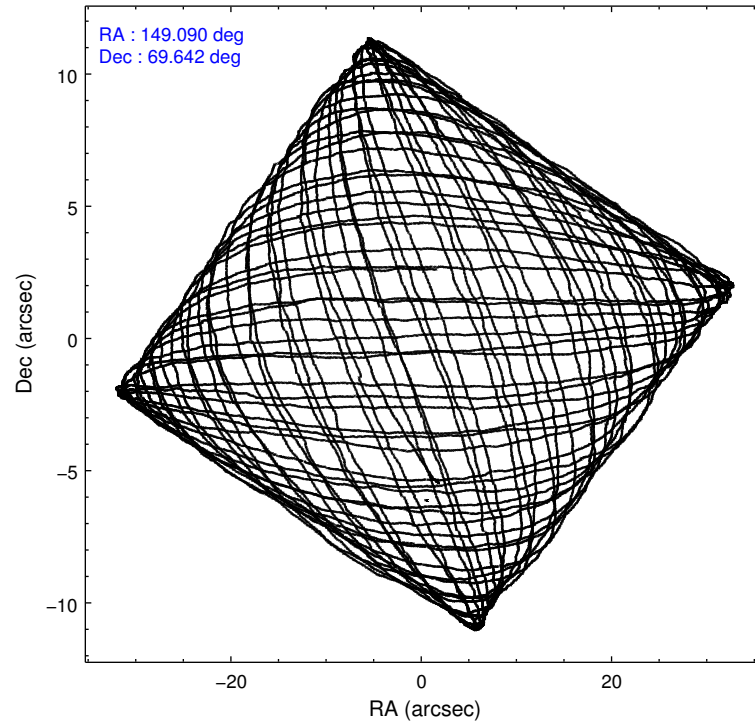
	ccd 1
level 1 events	64738
rejected events	22183
rejected %	34%

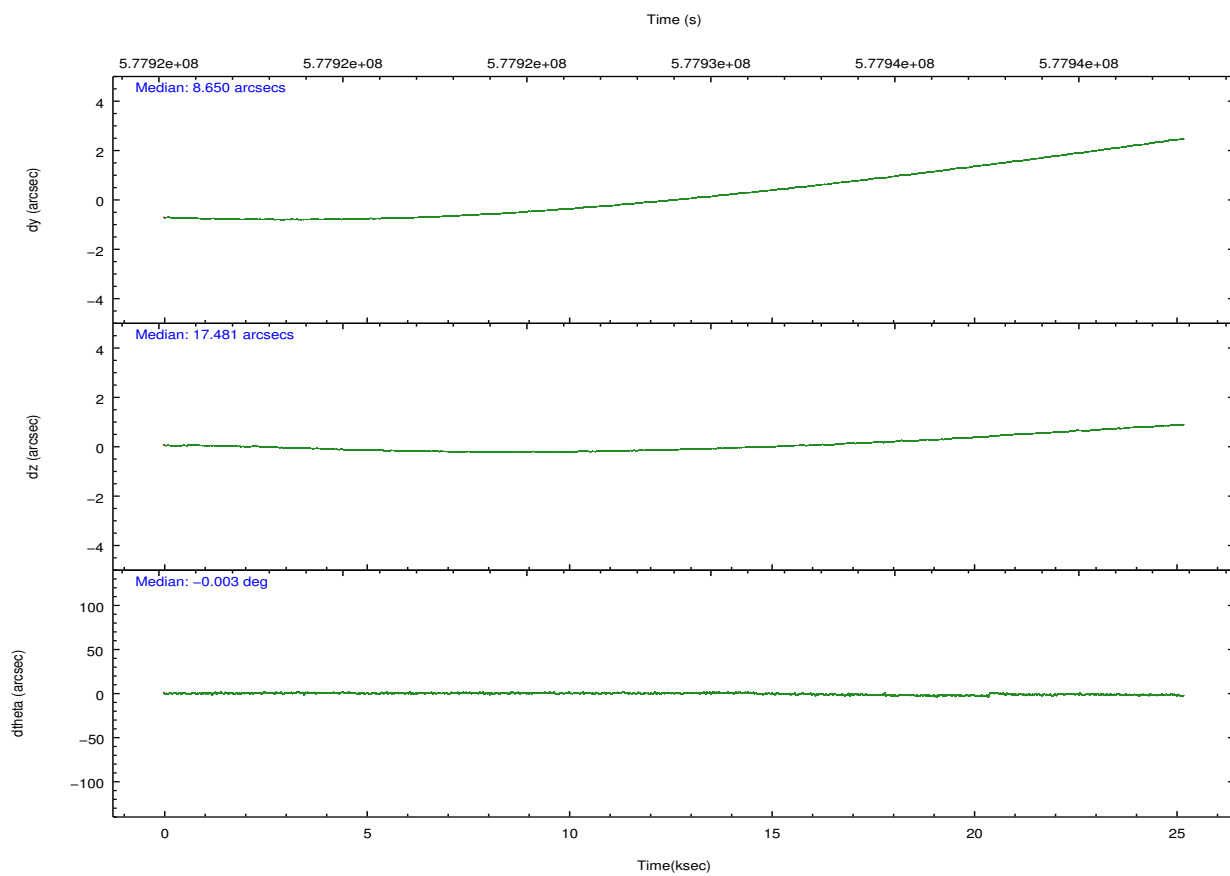
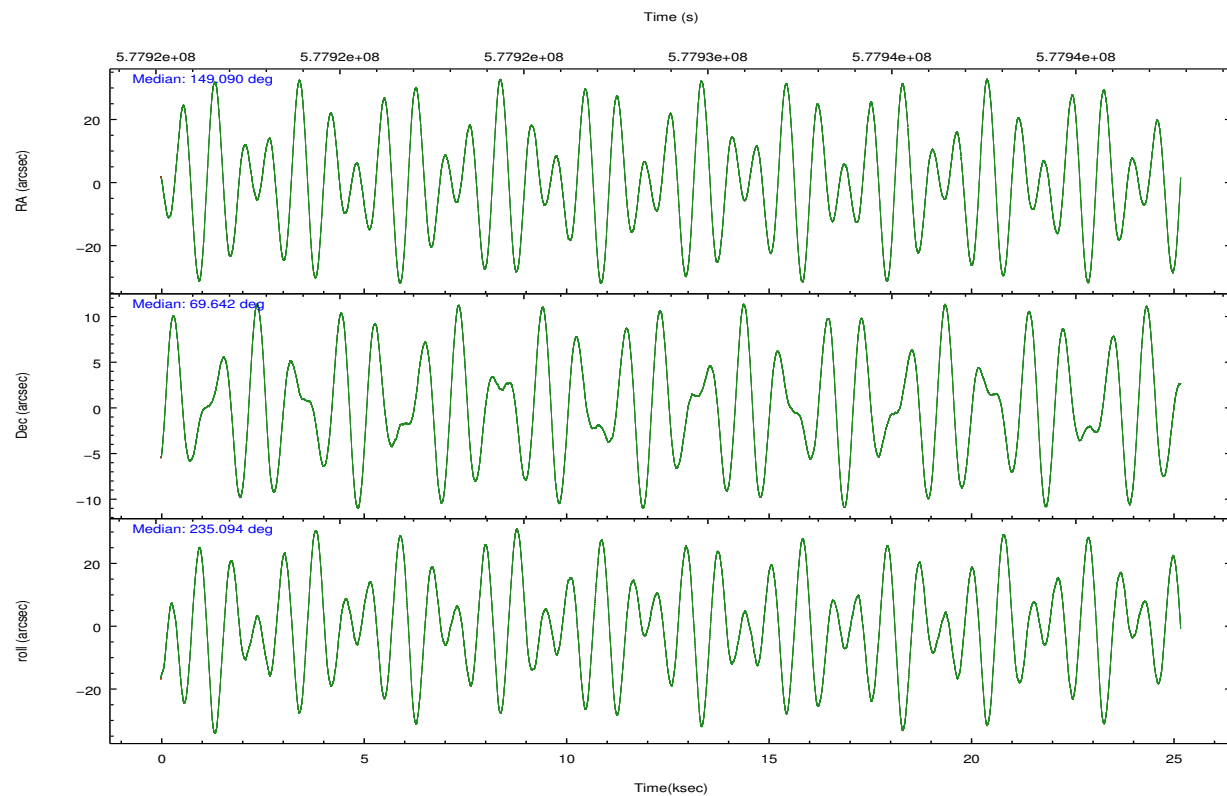
	ccd 1
grade 0 events	31634
	48%
grade 1 events	178
	0%
grade 2 events	5149
	7%
grade 3 events	1889
	2%
grade 4 events	1865
	2%
grade 5 events	1074
	1%
grade 6 events	2021
	3%
grade 7 events	20928
	32%

2.2 Compared Parameters

Parameter	Planned	Actual	Parameter	Planned	Actual
Instrument	ACIS	ACIS	Obspar format version number	7	7
Detector	ACIS-1	ACIS-1	Obspar file type	PREDICTED	ACTUAL
Grating	NONE	NONE	Obspar update status	NONE	UPDATED
Data mode	FAINT	FAINT	Number of optional ACIS chips dropped	0	0
Observation mode	POINTING	POINTING	On-chip summing requested	N	N
[deg] Pointing RA	149.096746	149.0901922528079	Subarray requested	CUSTOM	1/8
[deg] Pointing Dec	69.669247	69.64174529806085	Subarray start row	897	897
[deg] Pointing Roll	234.880762	235.0955916043528	Subarray row count	128	128
[deg] Roll angle	270.000000	270.000000	Alternating exposures requested	N	N
[deg] Roll tolerance	45.000000	45.000000	[s] Primary exposure time	0.000000	0.5
Roll constraint allows 180D rotation	Y	Y			
[mm] SIM focus pos	-0.782348	-0.7809083437167272			
[mm] SIM defocus	0	0.001439871863259334			
[mm] SIM translation stage pos	-233.592463	-233.5874344608287			
[mm] SIM translation stage offset	0	-0.005018542100998502			
[s] Observation start time (MET)	577916581.184000	577915401.19055			
Observation start date	2016-04-24T20:21:53	2016-04-24T20:03:21			
[s] Observation end time (MET)	577941581.184000	577942400.2046			
Observation end date	2016-04-25T03:18:33	2016-04-25T03:33:20			
Read mode	TIMED	TIMED			

2.3 Aspect



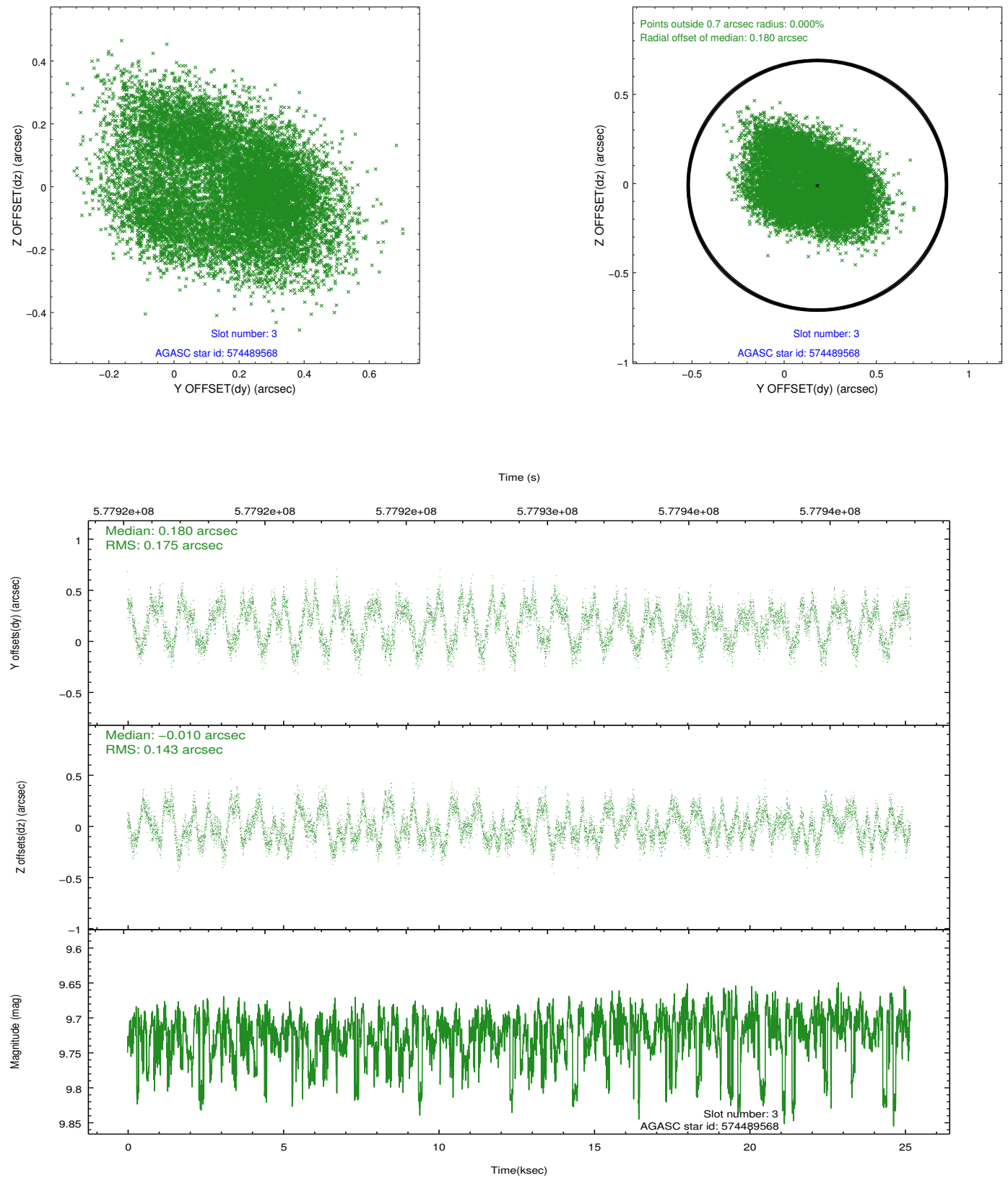


Slot Statistics

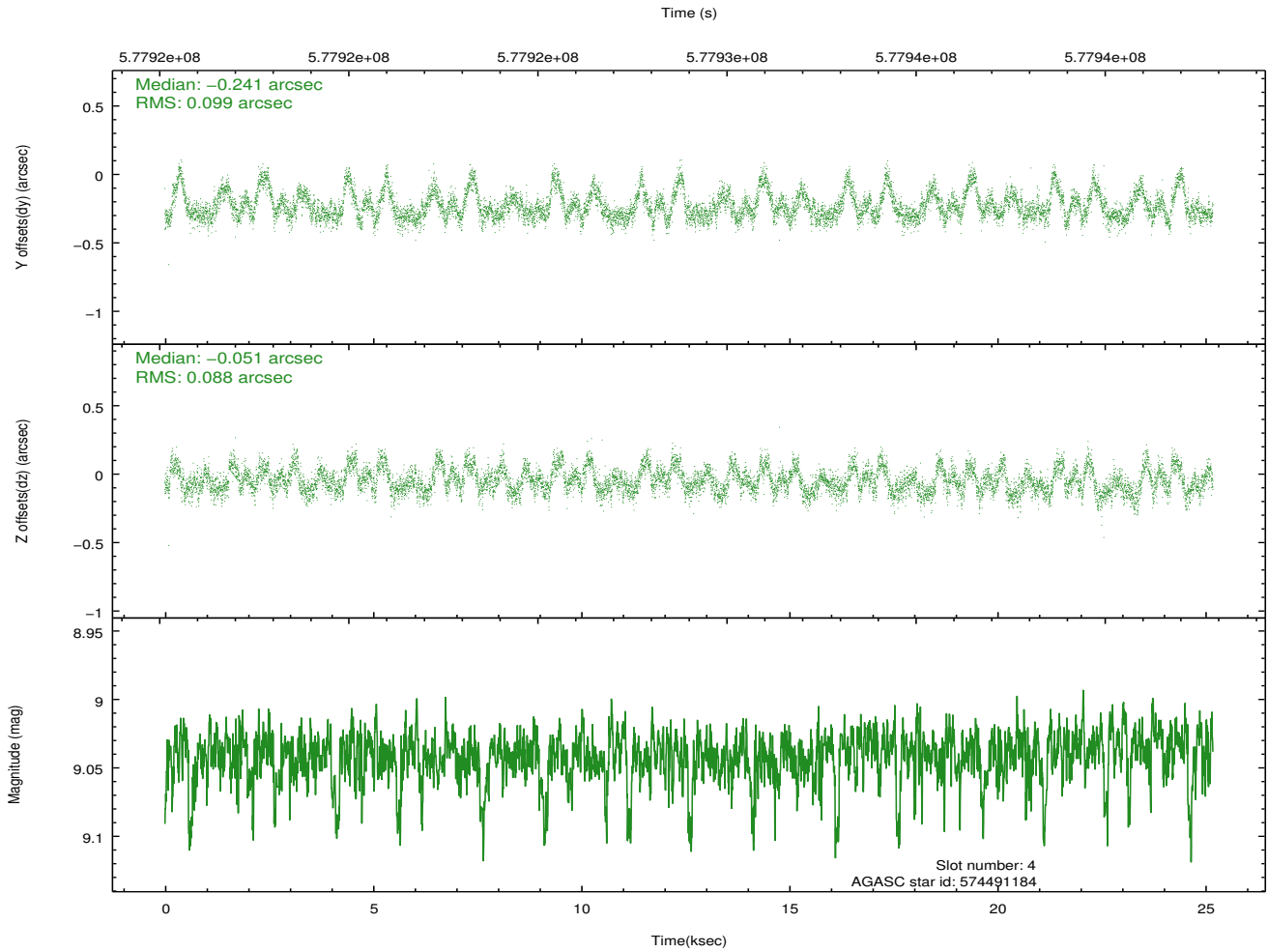
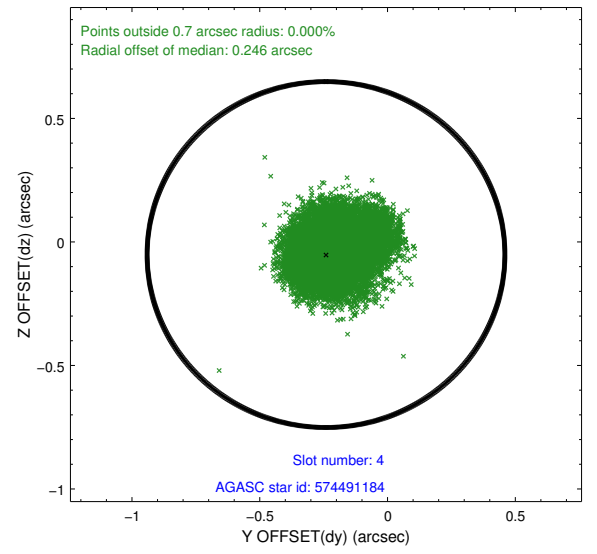
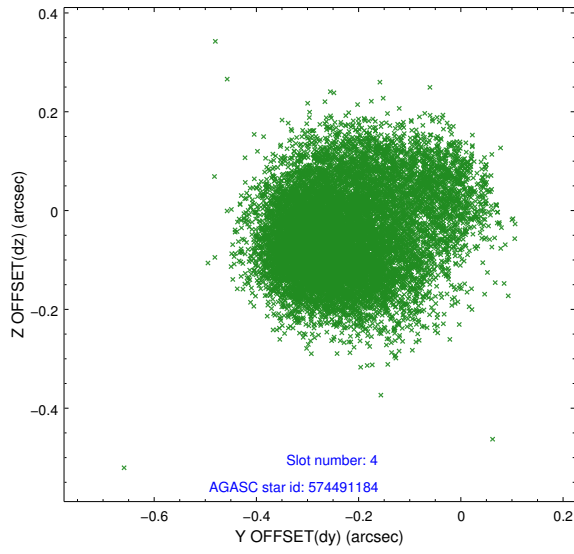
slot	status	used	id	mag	n_pts	med_dy	med_dz	dr1	dr2	ra	dec	mean_y	mean_z
0	FID		ACIS-I-1	7.25	6143	0.010	-0.116	0.022	0.094	0.000000	0.000000	930.71	-841.34
1	FID		ACIS-I-4	7.18	6142	0.274	0.097	0.018	0.053	0.000000	0.000000	2151.05	1058.61
2	FID		ACIS-I-5	7.23	6143	-0.378	0.089	0.015	0.042	0.000000	0.000000	-1817.56	1056.53
3	GUIDE	used	574489568	9.72	12264	0.180	-0.010	0.245	0.374	147.223974	69.438157	2013.48	-1478.42
4	GUIDE	used	574491184	9.04	12273	-0.241	-0.051	0.138	0.239	148.582453	69.768699	73.66	-730.98
5	GUIDE	used	574491872	9.22	12280	0.021	0.036	0.135	0.235	147.207613	69.765453	1045.14	-2140.91
6	GUIDE	used	574886464	9.75	12264	-0.142	0.225	0.157	0.256	149.898674	70.203982	-2141.93	-311.03
7	GUIDE	used	574886496	8.47	12281	0.180	-0.208	0.089	0.137	148.945563	70.041136	-988.13	-922.44

2.4 Star Slots

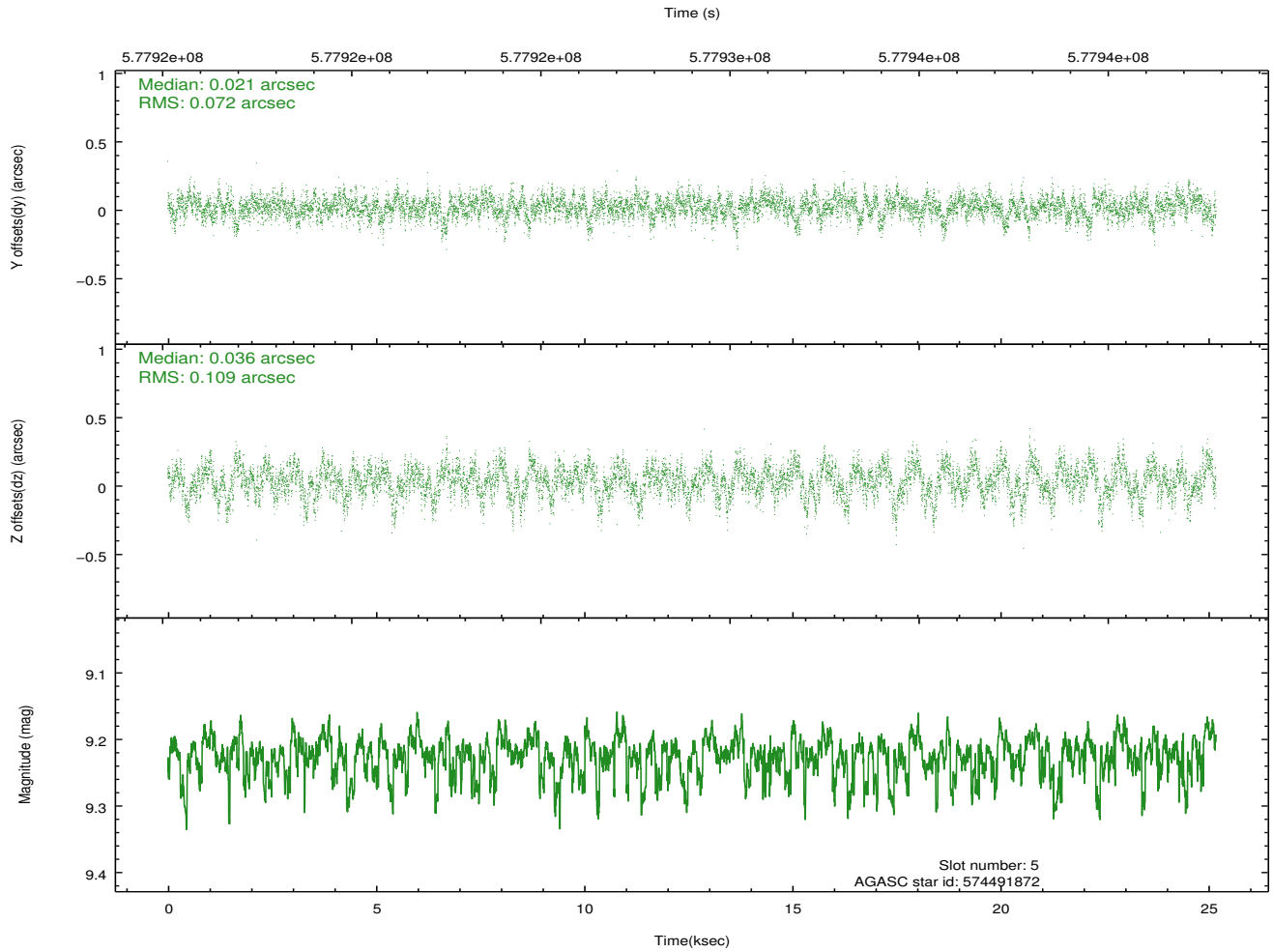
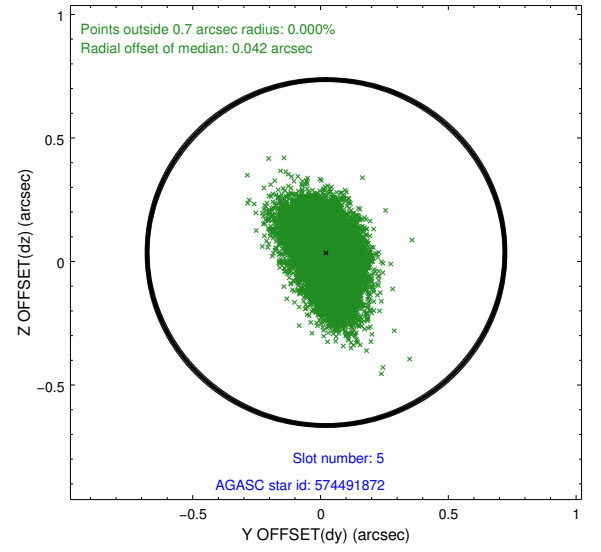
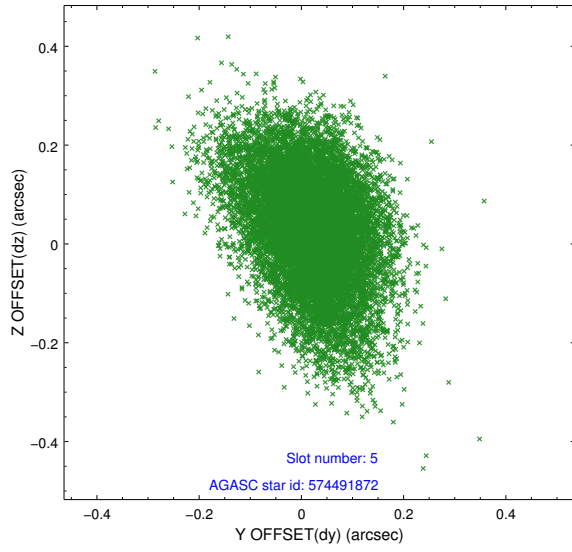
2.4.1 Slot 3



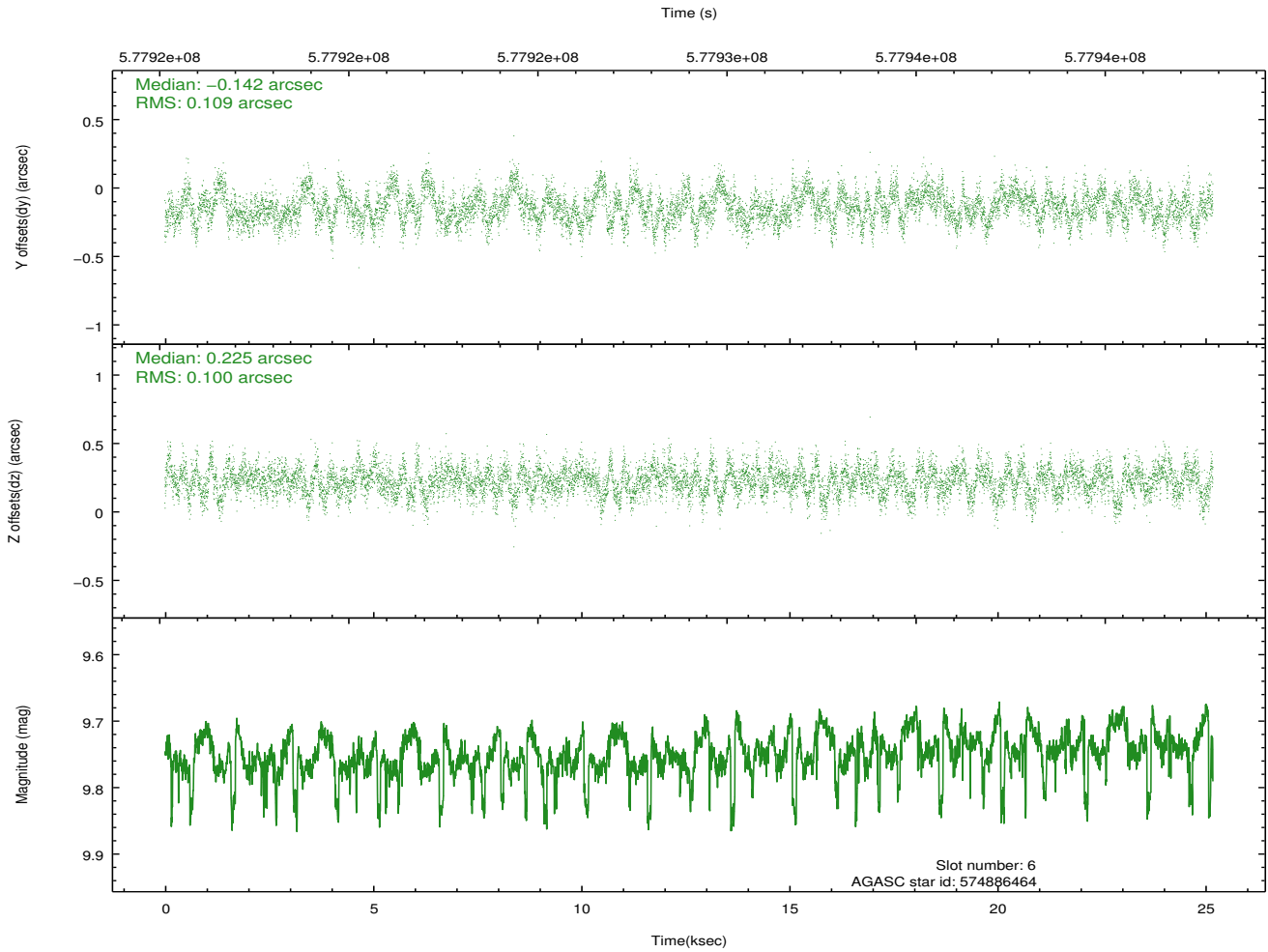
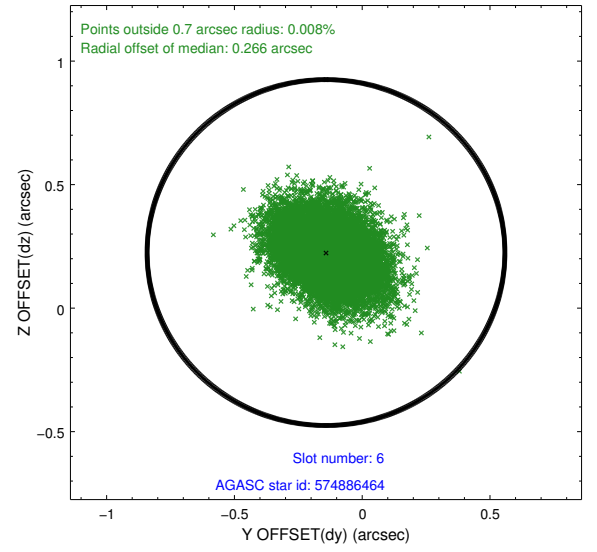
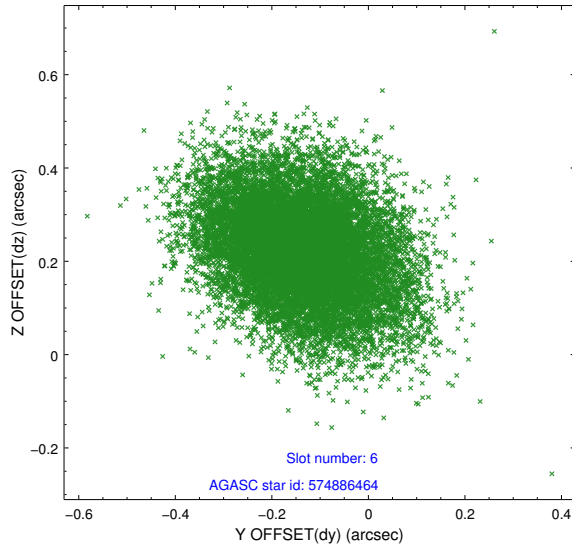
2.4.2 Slot 4



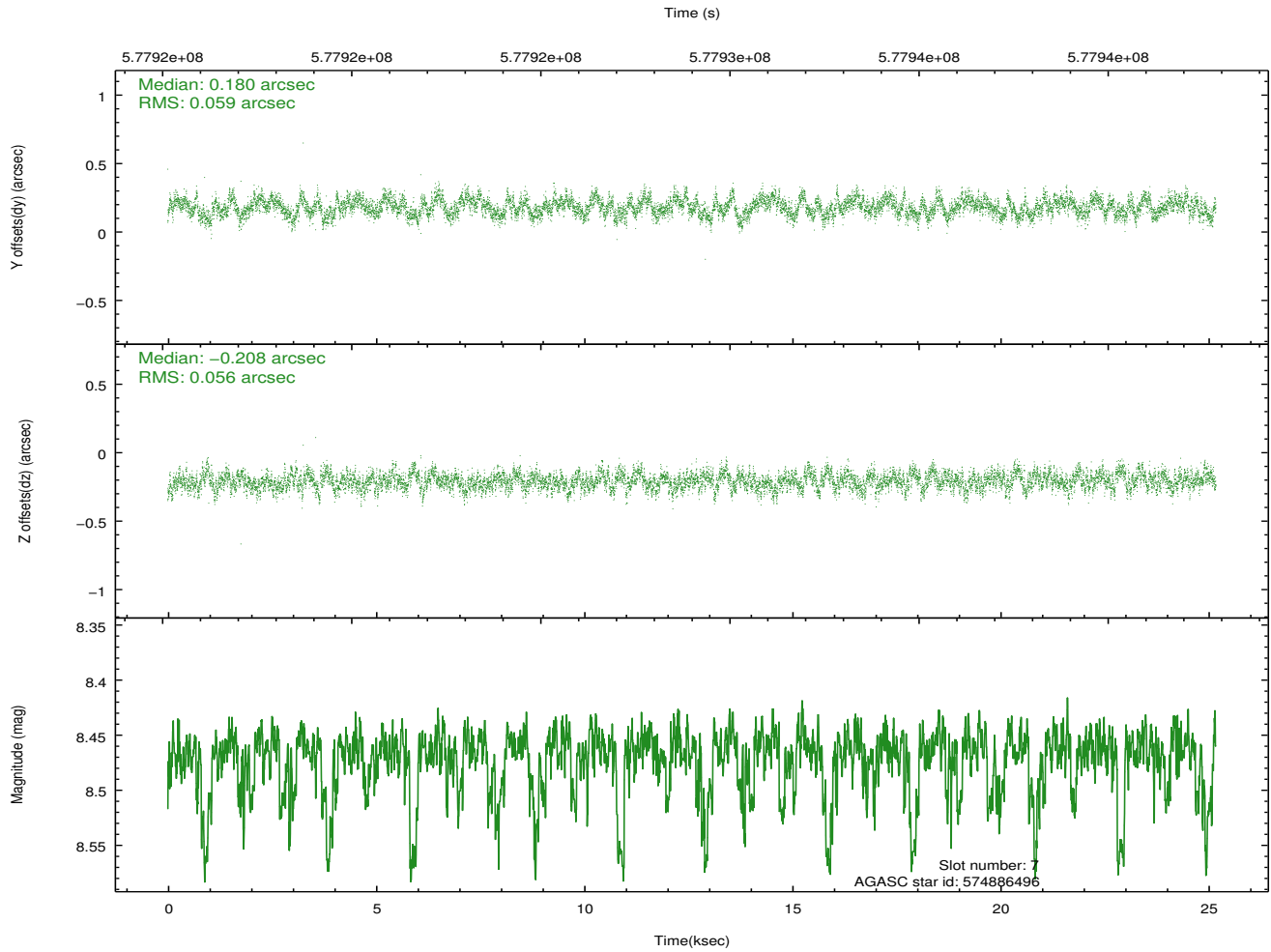
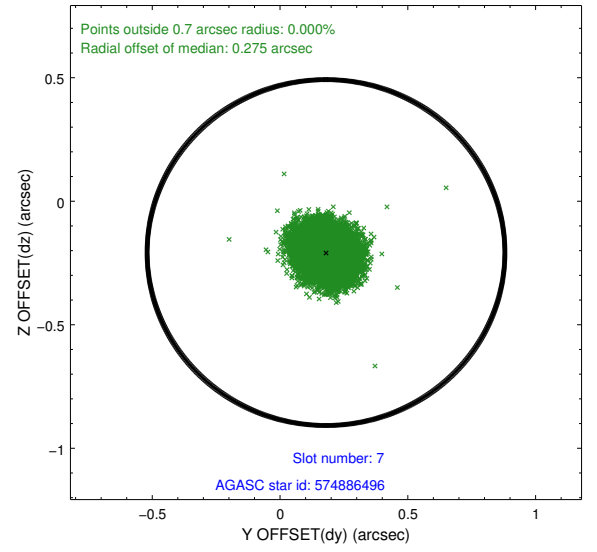
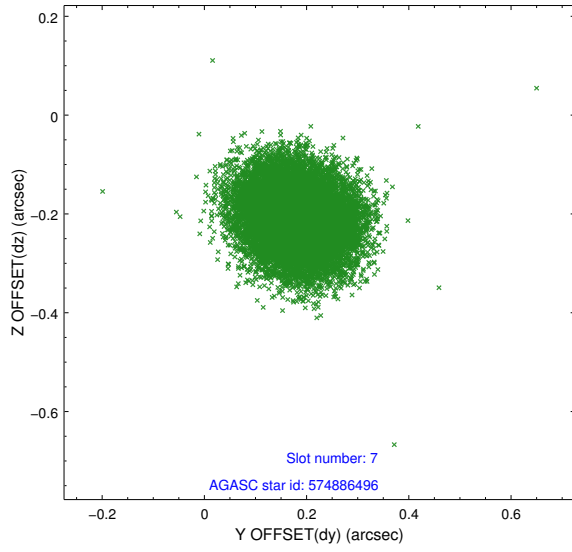
2.4.3 Slot 5



2.4.4 Slot 6

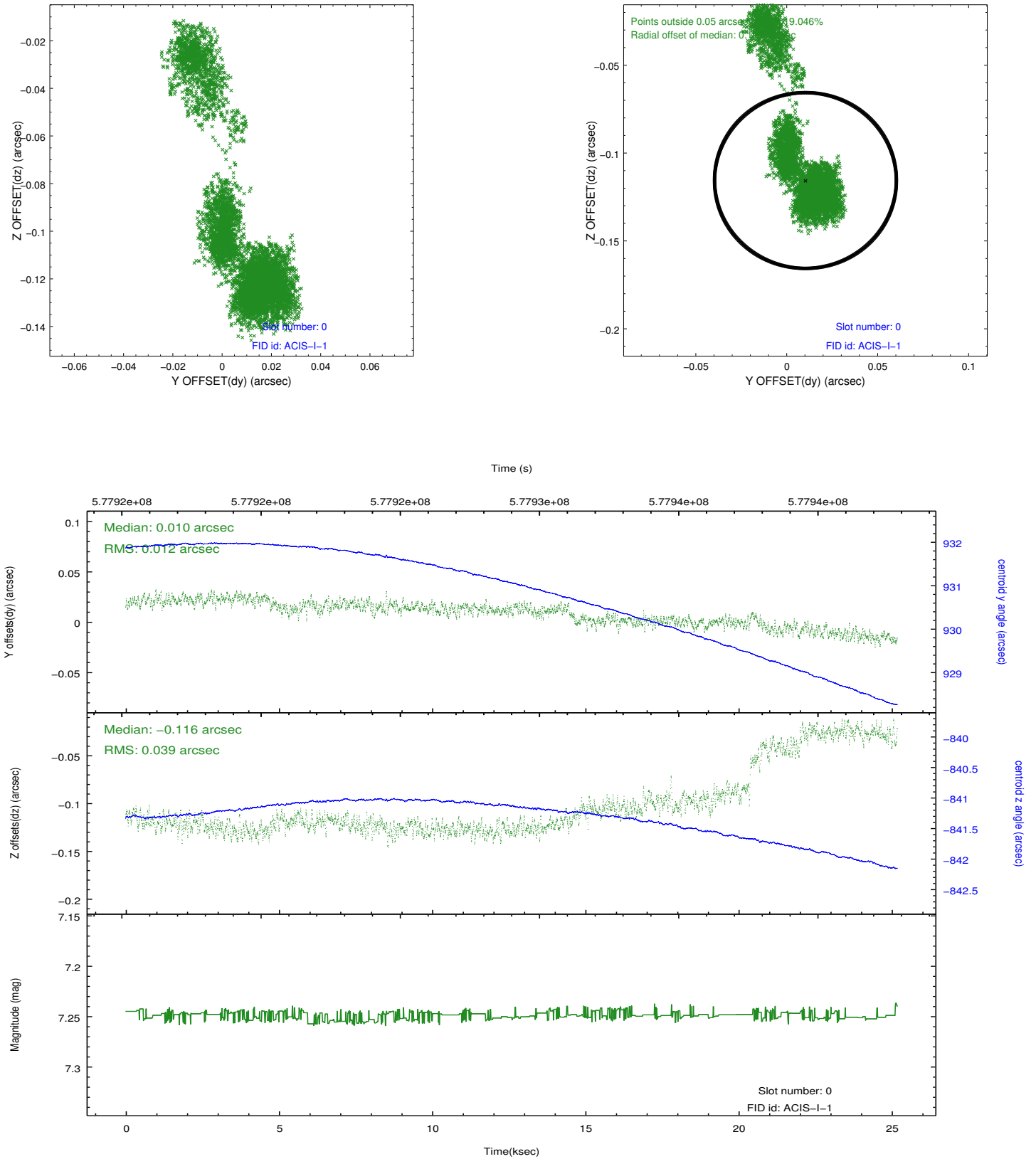


2.4.5 Slot 7

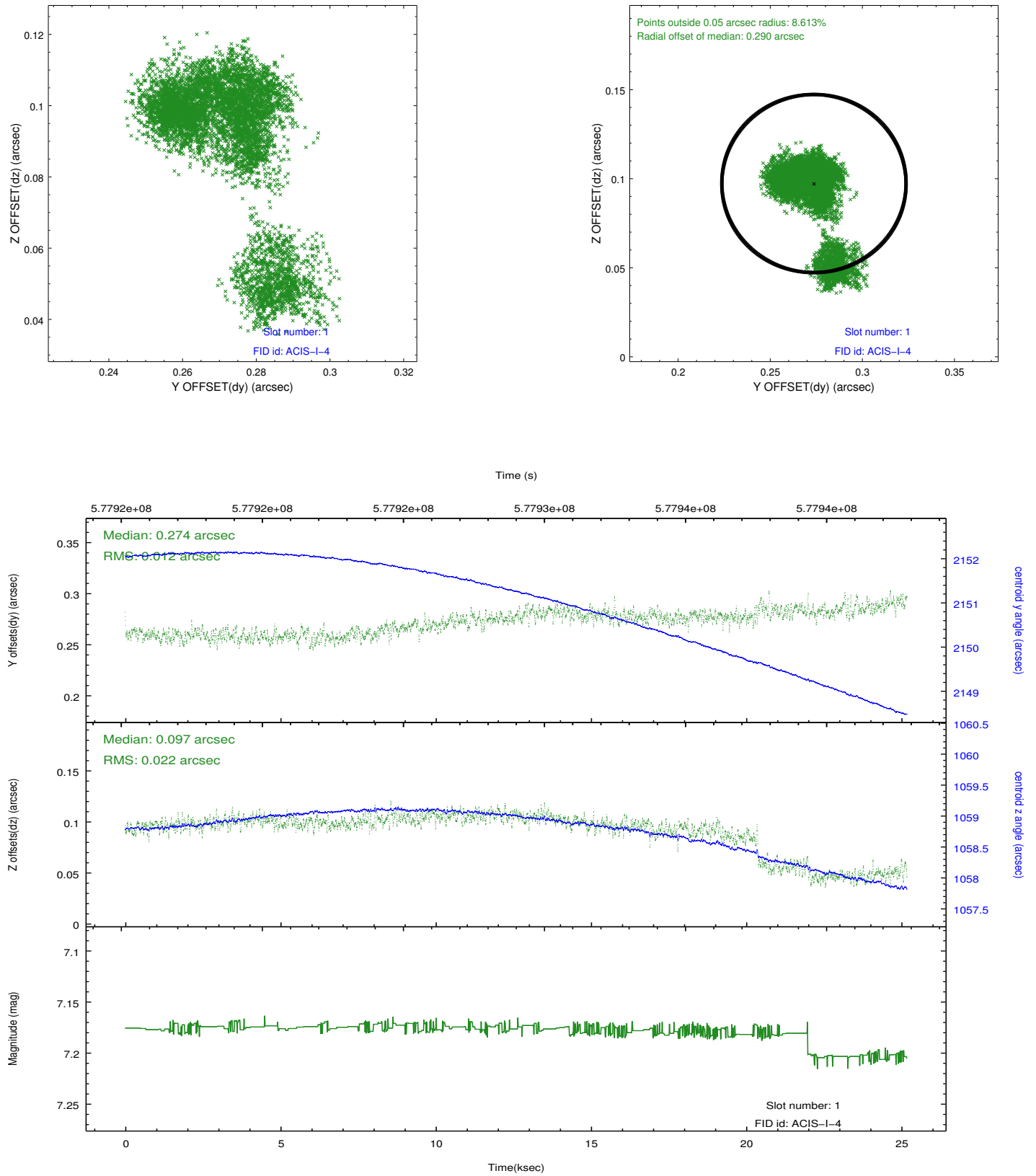


2.5 FID Slots

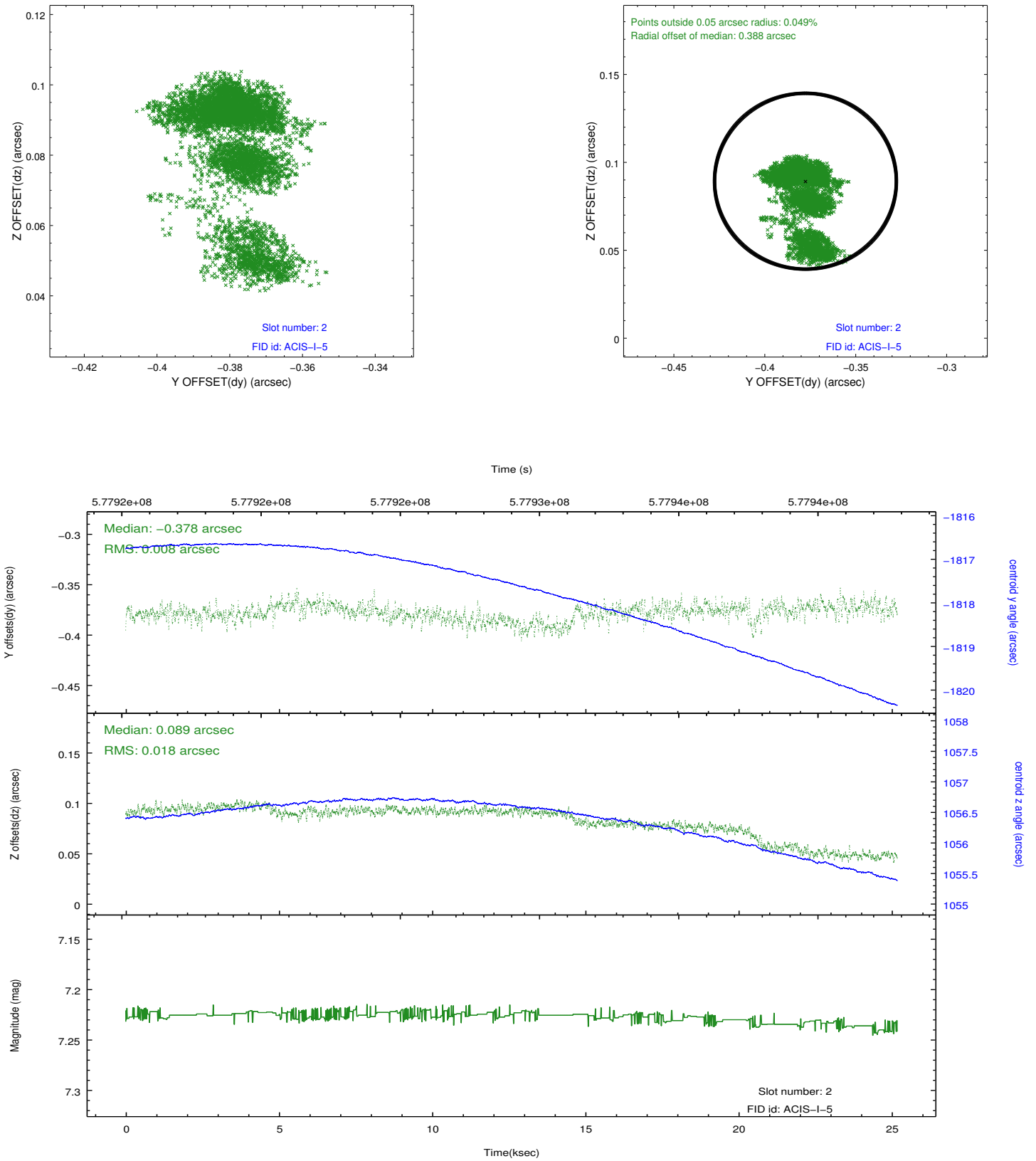
2.5.1 Slot 0



2.5.2 Slot 1



2.5.3 Slot 2



A Summary

A.1 Status

V&V Scientist	Joy Nichols
V&V Date (YYYY-MM-DD)	2016.04.27
V&V Edition	1
V&V Disposition and Status	OK
V&V Charge Time	25.102456273198

A.2 Comments

Roll constraint met.