

V&V Reference Report

L2 ASCDS Version : 10.5.1.1

Observation 19887 - L2 Version 1
Chandra X-Ray Center

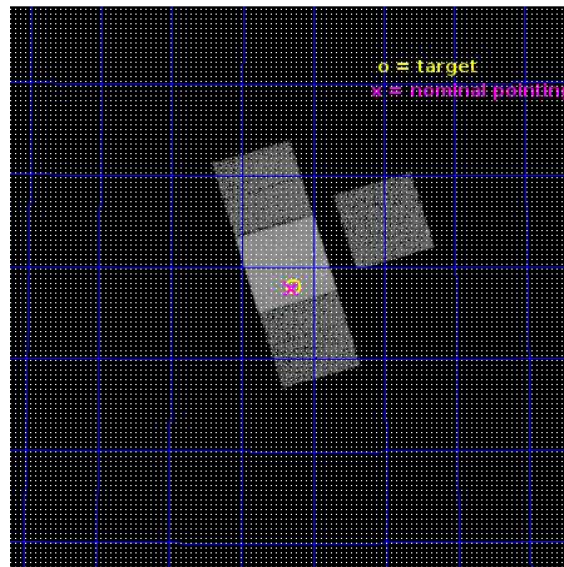
L2 Processing Date : Sep 29 2016

Contents

1	Front	2
2	OBI	3
2.1	OBI	3
2.1.1	Images	3
2.1.2	Bias	3
2.1.3	Parameters	4
2.1.4	Events	4
2.2	Compared Parameters	5
2.3	Aspect	6
2.4	Star Slots	9
2.4.1	Slot 3	9
2.4.2	Slot 4	10
2.4.3	Slot 5	11
2.4.4	Slot 6	12
2.4.5	Slot 7	13
2.5	FID Slots	14
2.5.1	Slot 0	14
2.5.2	Slot 1	15
2.5.3	Slot 2	16
A	Summary	17
A.1	Status	17
A.2	Comments	17

1 Front

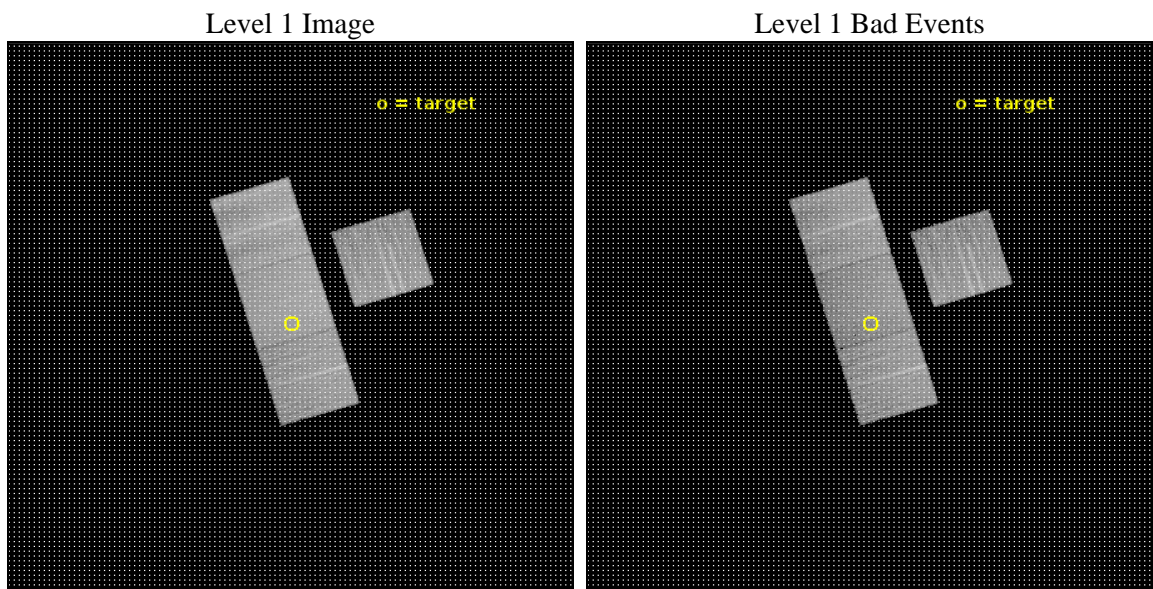
seq_num	502497	Sequence number
obs_id	19887	Observation id
title	Confirming the Birth of a New Black Hole	Proposal title
observer	Christopher Kochanek	Principal investigator
object	FailedSN	Source name
dtcycle	0	
cycle	P	events from which exps? Prim/Second/Both
ra_targ	308.821392	Observer's specified target RA [deg]
dec_targ	60.132225	Observer's specified target Dec [deg]
ra_nom	308.82641397723	Nominal RA [deg]
dec_nom	60.128700051349	Nominal Dec [deg]
roll_nom	253.15228259462	Nominal Roll [deg]
revision	1	Processing version of data
ontime	18795.300144672	Sum of GTIs [s]
livetime	18549.725711384	Livetime [s]
ontime3	18795.300144672	Sum of GTIs [s]
ontime6	18792.159094453	Sum of GTIs [s]
ontime7	18795.300144672	Sum of GTIs [s]
ontime8	18782.735923886	Sum of GTIs [s]
l2events	108990	Number of level 2 events



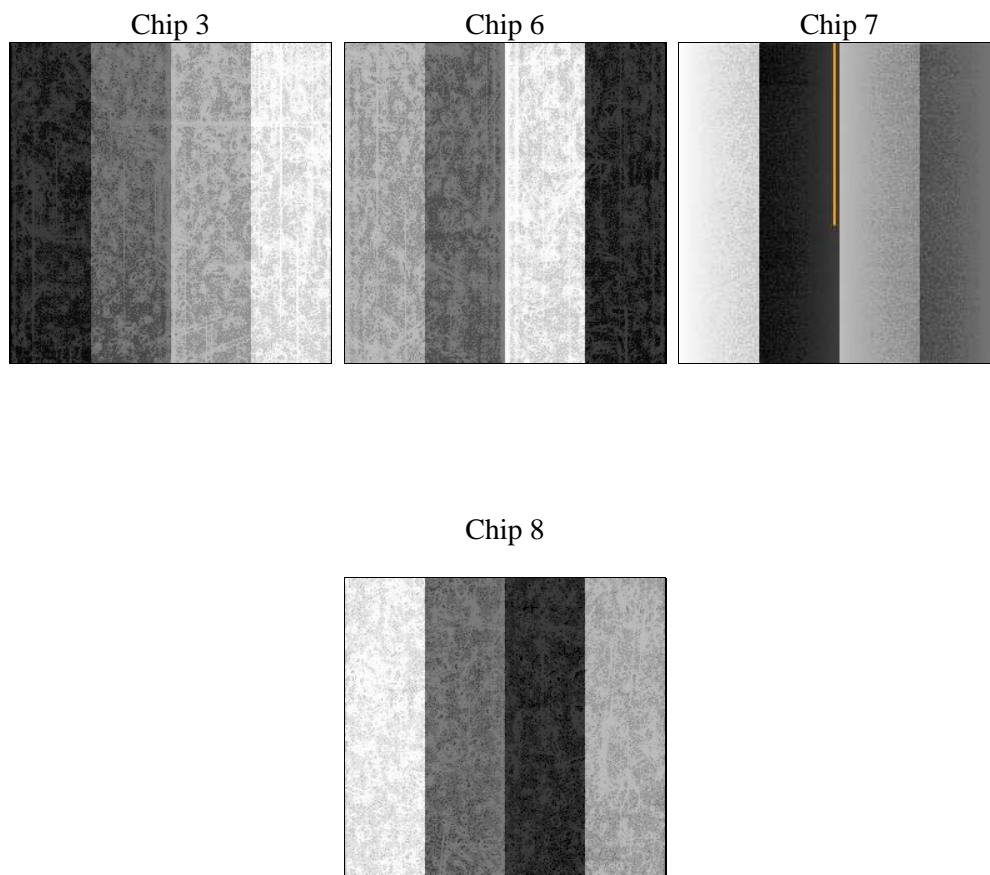
2 OBI

2.1 OBI

2.1.1 Images



2.1.2 Bias



2.1.3 Parameters

obi_num	0	Obi number	sched_exp_time	19000.000000	[s] Scheduled observation exposure time
ascdsver	10.5.1.1	Processing system revision	ontime	18795.300144672	Sum of GTIs [s]
caldsver	4.7.2	 	ontime3	18795.300144672	Sum of GTIs [s]
date	2016-09-29T19:58:17	Date and time of file creation	ontime6	18792.159094453	Sum of GTIs [s]
revision	1	Processing version of data	ontime7	18795.300144672	Sum of GTIs [s]
			ontime8	18782.735923886	Sum of GTIs [s]
			l1events	570788	Number of level 1 events

2.1.4 Events

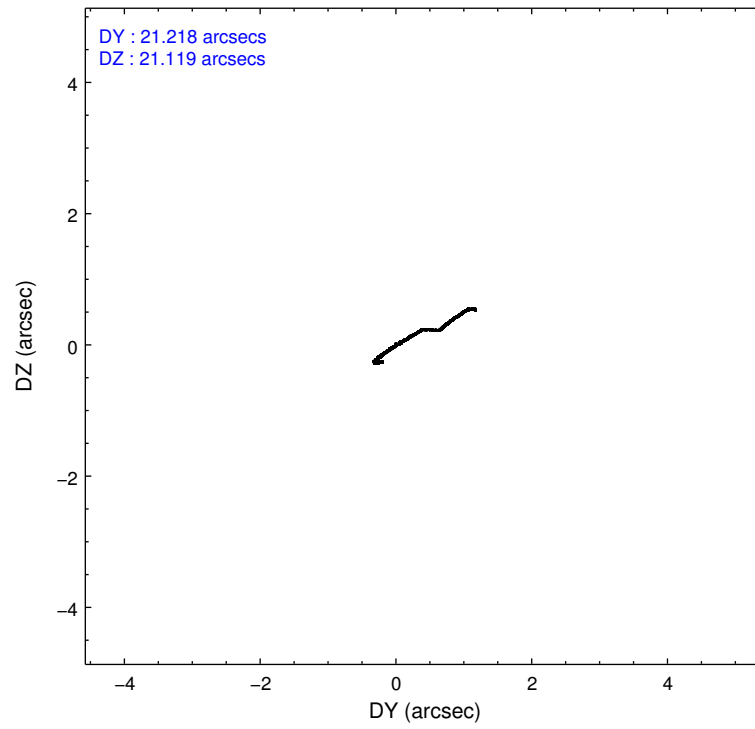
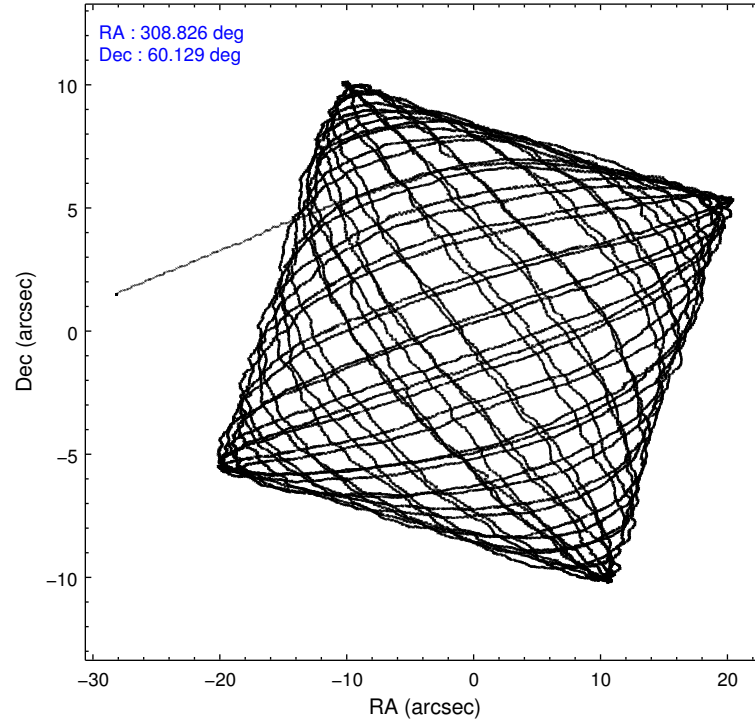
	ccd 3	ccd 6	ccd 7	ccd 8
level 1 events	120877	126116	161232	162563
rejected events	108073	112033	88660	120423
rejected %	89%	88%	54%	74%

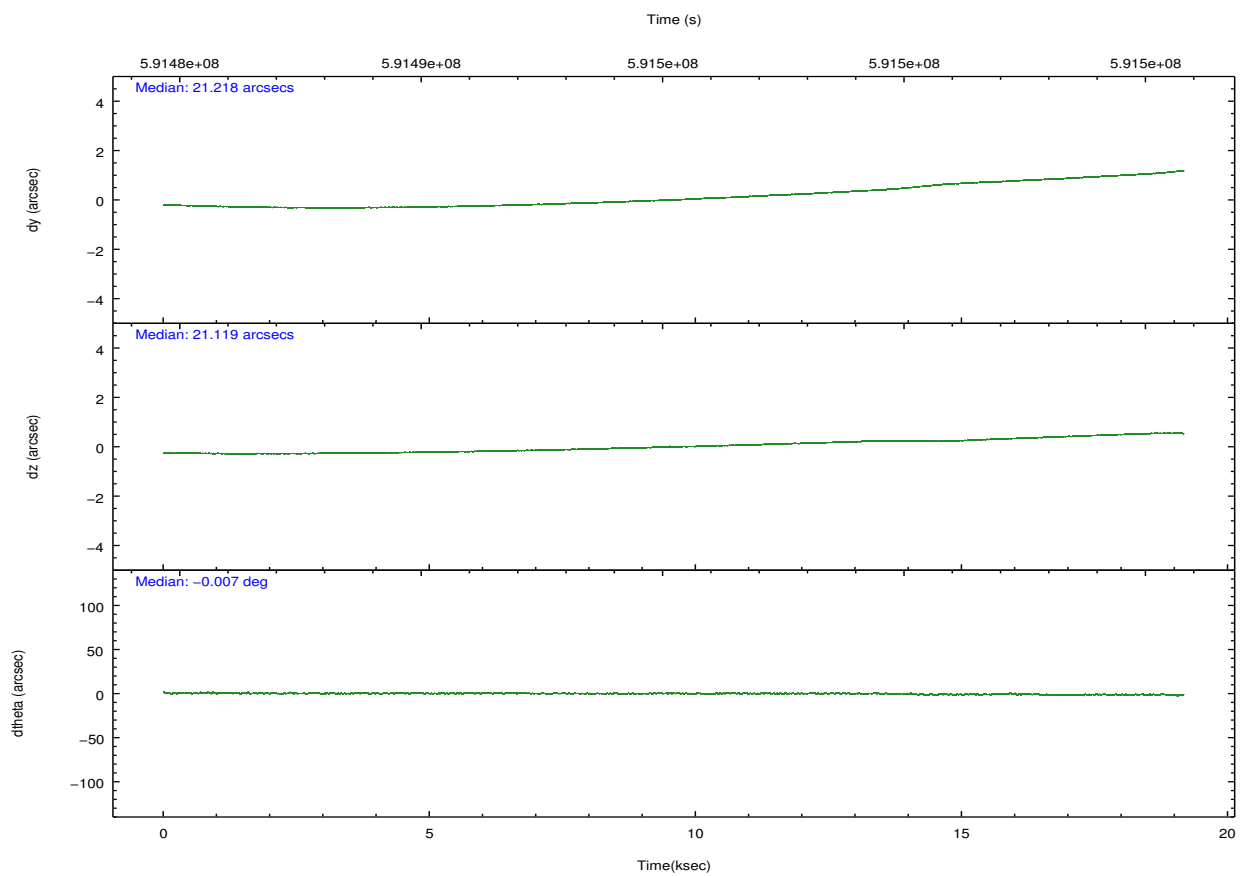
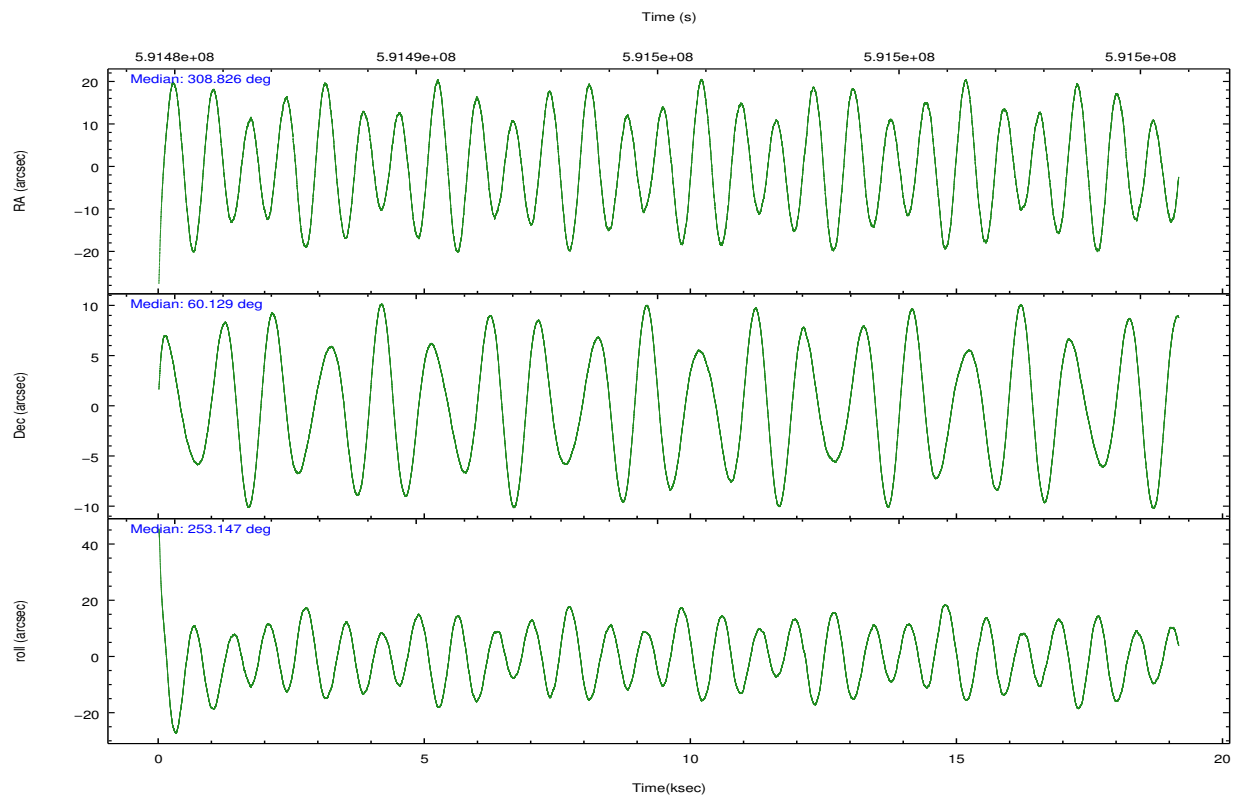
	ccd 3	ccd 6	ccd 7	ccd 8
grade 0 events	4550	4583	6796	11787
	3%	3%	4%	7%
grade 1 events	53	73	179	148
	0%	0%	0%	0%
grade 2 events	2815	3248	15695	10479
	2%	2%	9%	6%
grade 3 events	1372	1440	5895	4252
	1%	1%	3%	2%
grade 4 events	1349	1354	5908	4021
	1%	1%	3%	2%
grade 5 events	5827	5815	15591	8718
	4%	4%	9%	5%
grade 6 events	2720	3464	38291	11601
	2%	2%	23%	7%
grade 7 events	102191	106139	72877	111557
	84%	84%	45%	68%

2.2 Compared Parameters

Parameter	Planned	Actual	Parameter	Planned	Actual
Instrument	ACIS	ACIS	Obspar format version number	7	7
Detector	ACIS-3678	ACIS-3678	Obspar file type	PREDICTED	ACTUAL
Grating	NONE	NONE	Obspar update status	NONE	UPDATED
Data mode	VFAINT	VFAINT	Number of optional ACIS chips dropped	0	0
Observation mode	POINTING	POINTING	On-chip summing requested	N	N
[deg] Pointing RA	308.813153	308.8264139772307	Subarray requested	NONE	NONE
[deg] Pointing Dec	60.155324	60.12870005134875	Alternating exposures requested	N	N
[deg] Pointing Roll	253.007150	253.1522825946164	[s] Primary exposure time	0.000000	3.1
[mm] SIM focus pos	-0.684267	-0.6828225247311905			
[mm] SIM defocus	0	0.001444936568705701			
[mm] SIM translation stage pos	-190.132523	-190.1425803651734			
[mm] SIM translation stage offset	0	0.01005778216563158			
[s] Observation start time (MET)	591485809.184000	591484458.56902			
Observation start date	2016-09-28T21:35:41	2016-09-28T21:14:18			
[s] Observation end time (MET)	591504809.184000	591506043.53276			
Observation end date	2016-09-29T02:52:21	2016-09-29T03:14:03			
Read mode	TIMED	TIMED			

2.3 Aspect



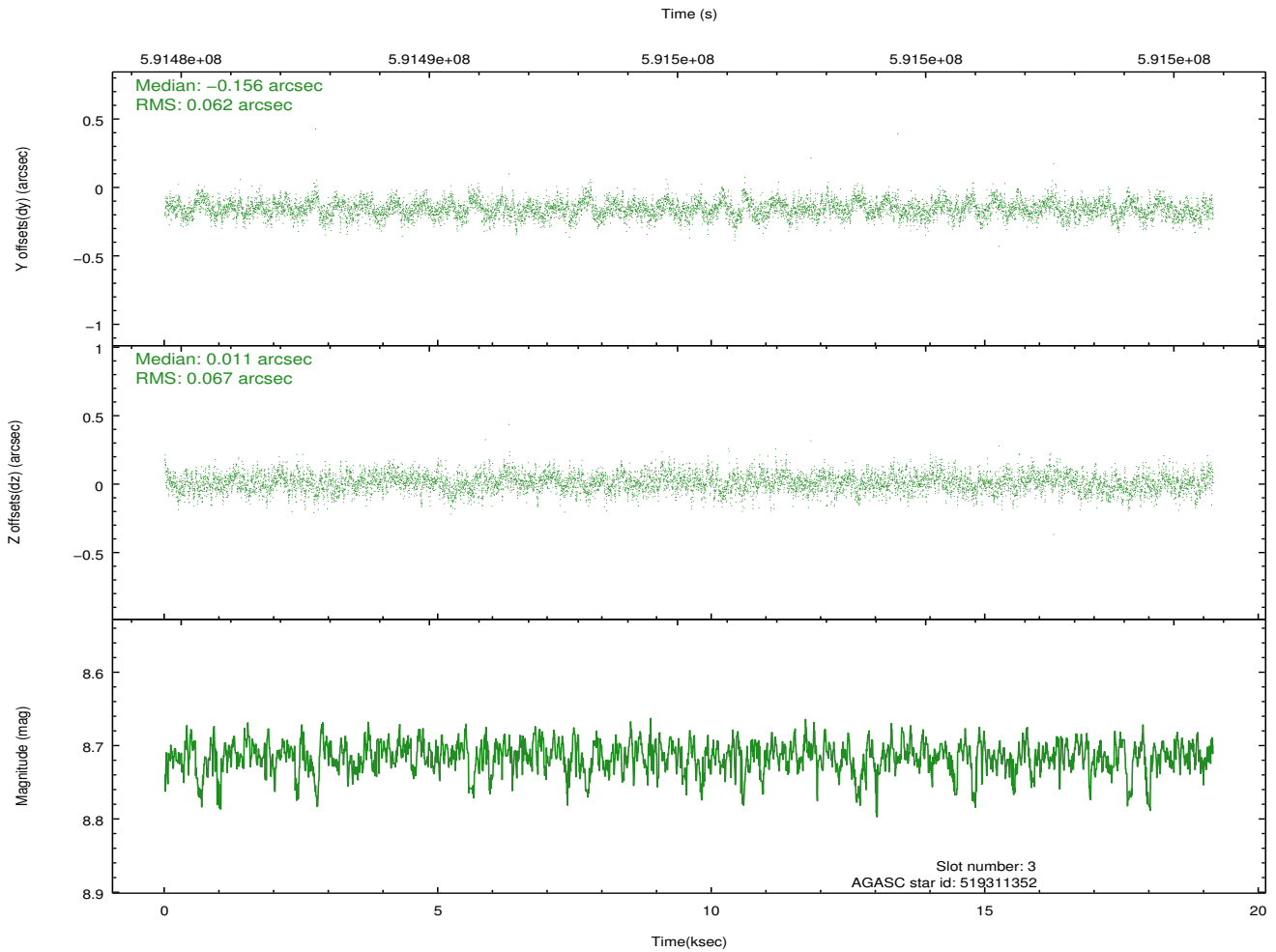
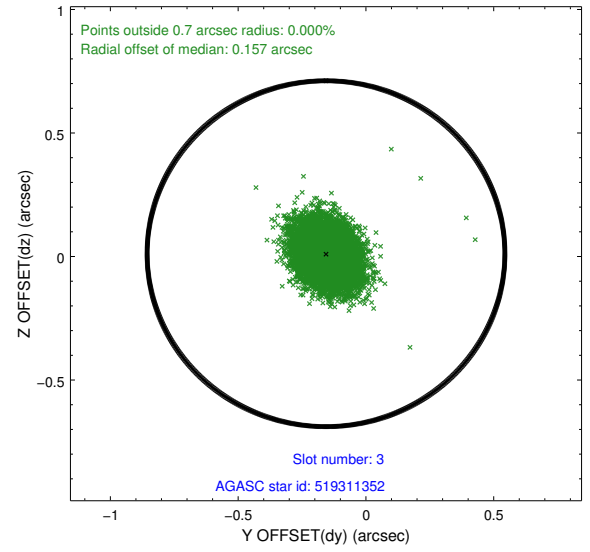
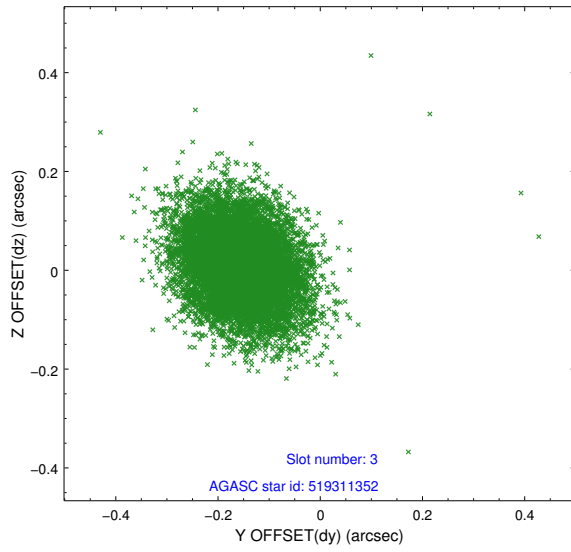


Slot Statistics

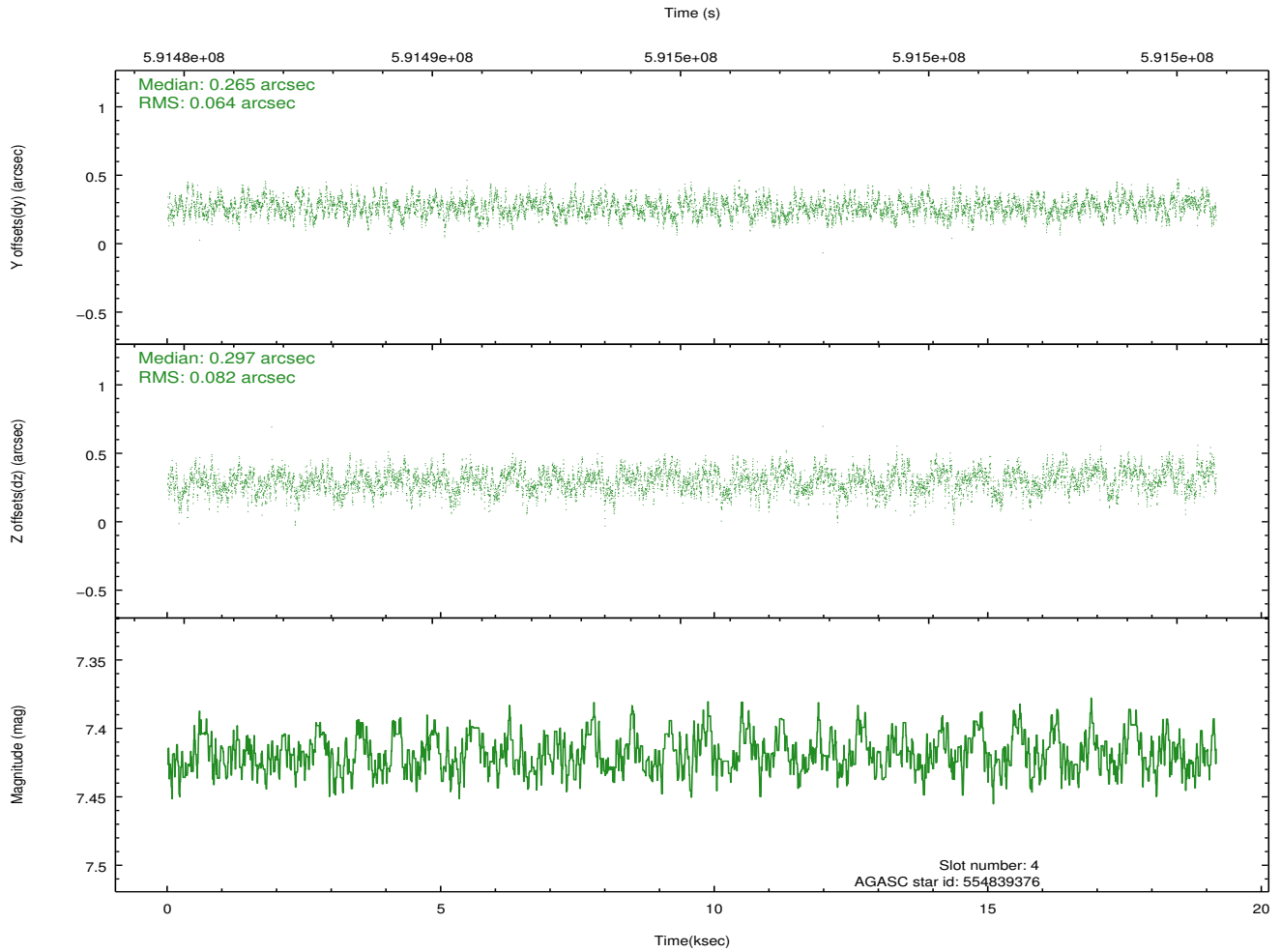
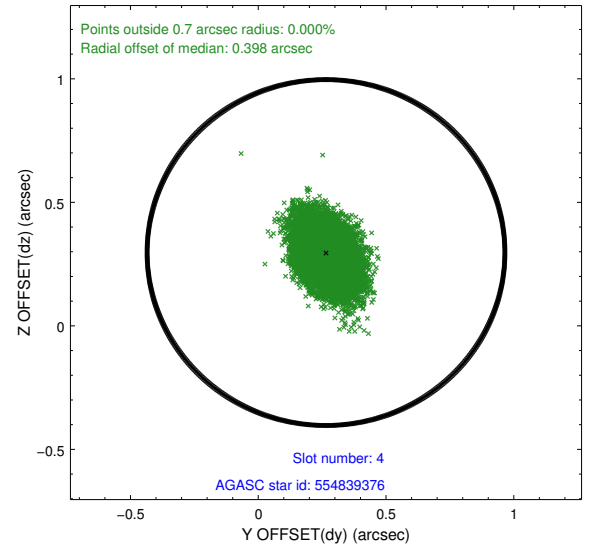
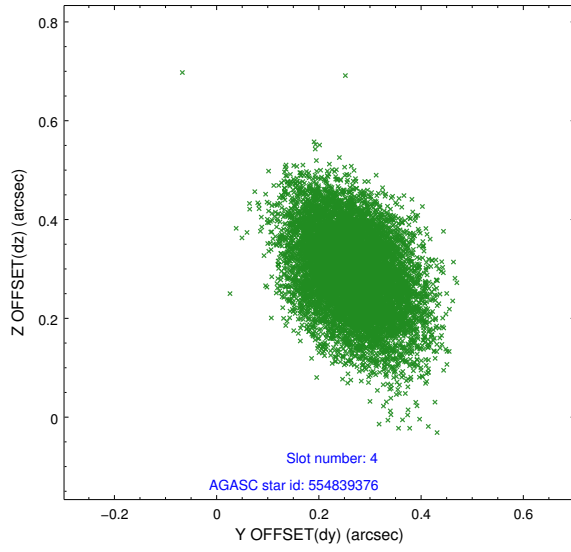
slot	status	used	id	mag	n_pts	med_dy	med_dz	dr1	dr2	ra	dec	mean_y	mean_z
0	FID		ACIS-S-1	7.13	4674	0.022	-0.118	0.017	0.034	0.000000	0.000000	921.58	-1738.37
1	FID		ACIS-S-4	7.16	4674	0.370	0.076	0.012	0.027	0.000000	0.000000	2139.38	165.80
2	FID		ACIS-S-5	7.16	4675	-0.419	0.055	0.015	0.031	0.000000	0.000000	-1827.54	159.49
3	GUIDE	used	519311352	8.71	9340	-0.156	0.011	0.097	0.159	309.050952	59.661888	1571.92	932.78
4	GUIDE	used	554839376	7.42	9345	0.265	0.297	0.109	0.181	308.018563	60.422364	-512.58	-1632.75
5	GUIDE	used	554842440	8.16	9343	0.162	0.084	0.133	0.214	307.970960	60.063321	749.77	-1352.47
6	GUIDE	used	519316320	8.12	9347	-0.318	-0.444	0.116	0.188	309.210894	59.408333	2356.61	1482.20
7	GUIDE	used	556537192	9.14	9337	0.047	0.055	0.136	0.222	309.975880	60.344309	-1272.78	1776.66

2.4 Star Slots

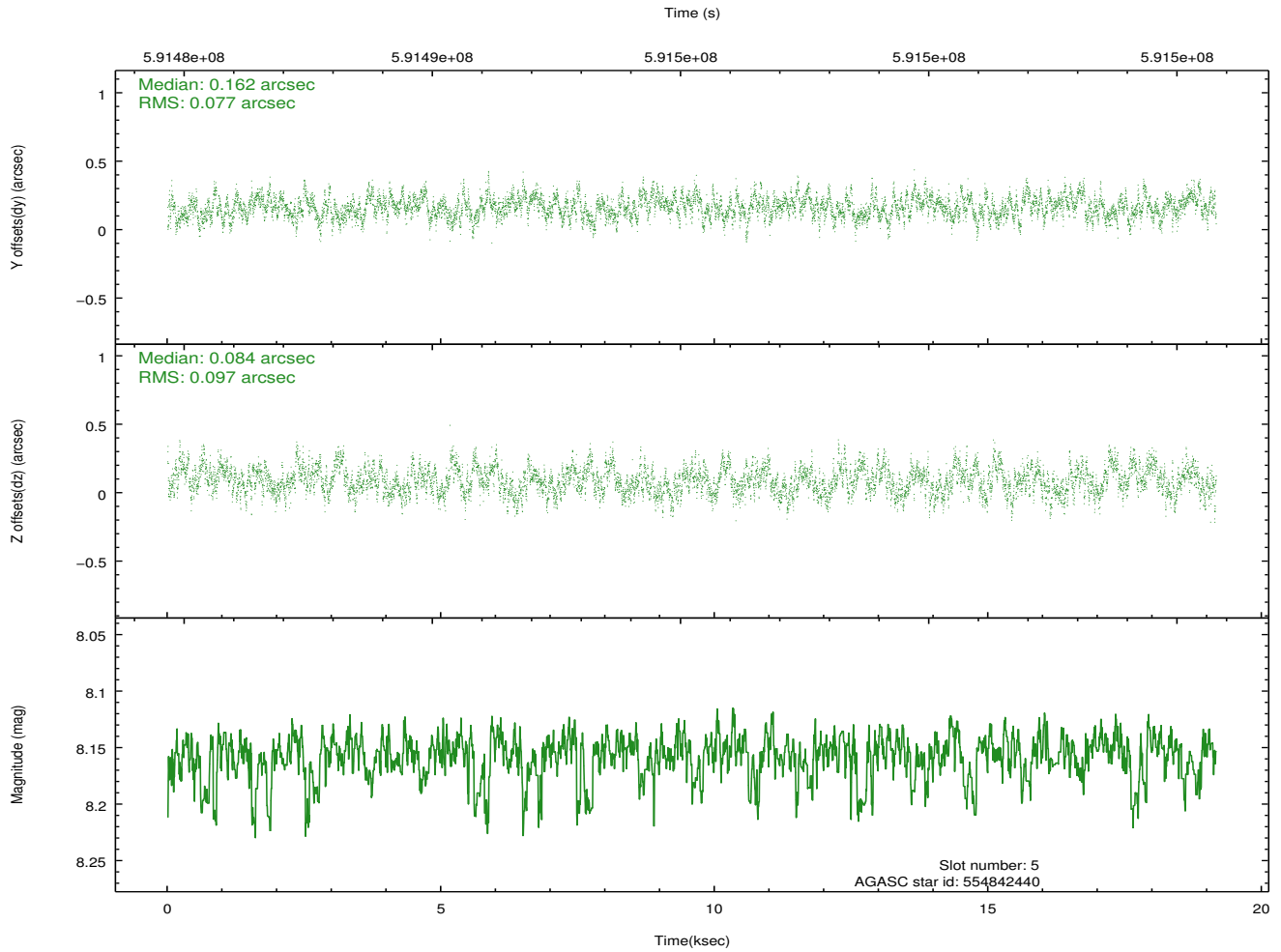
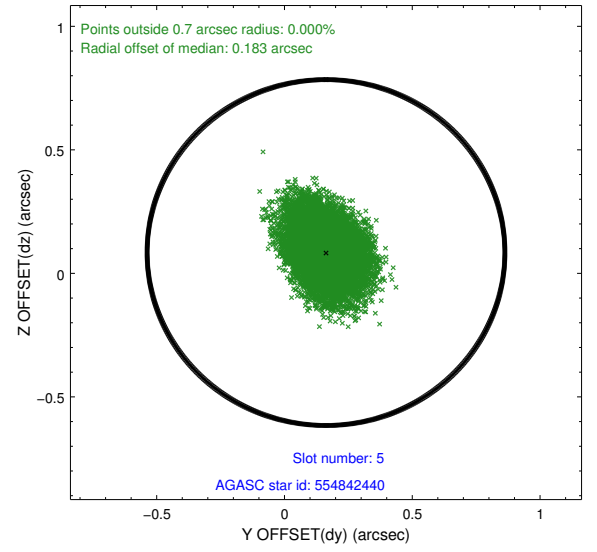
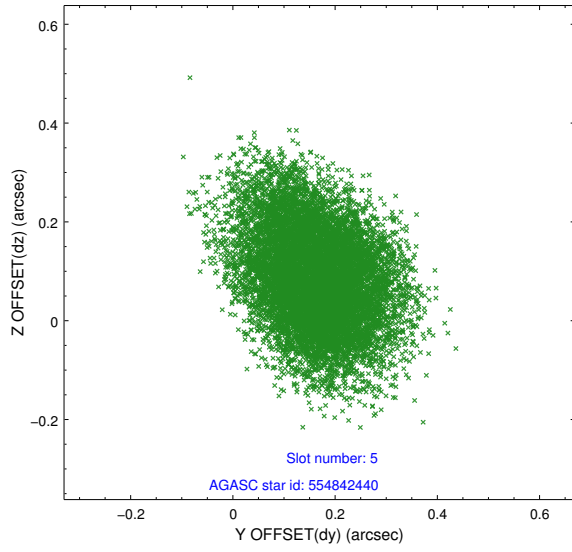
2.4.1 Slot 3



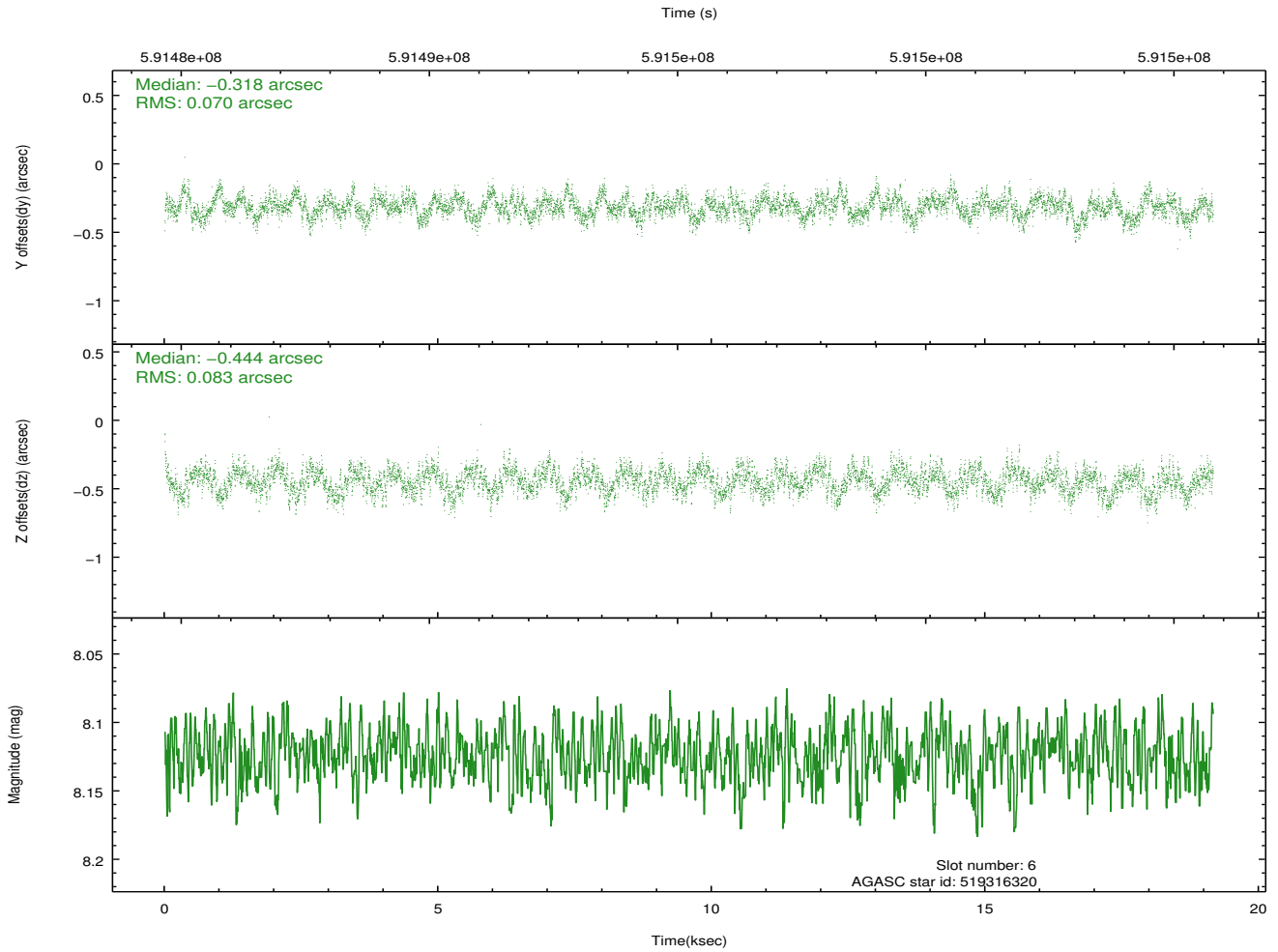
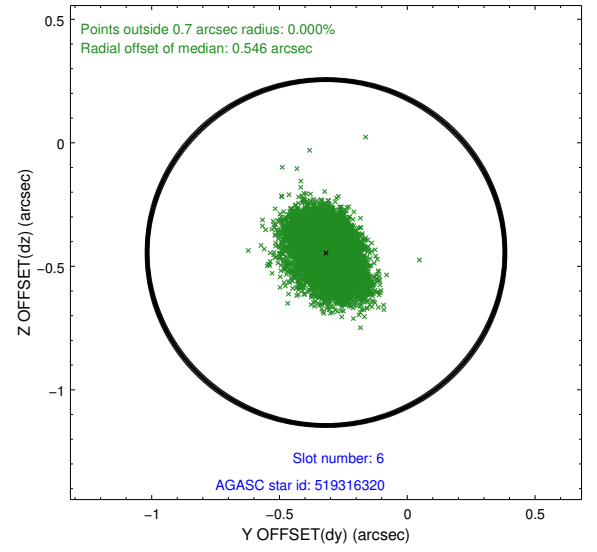
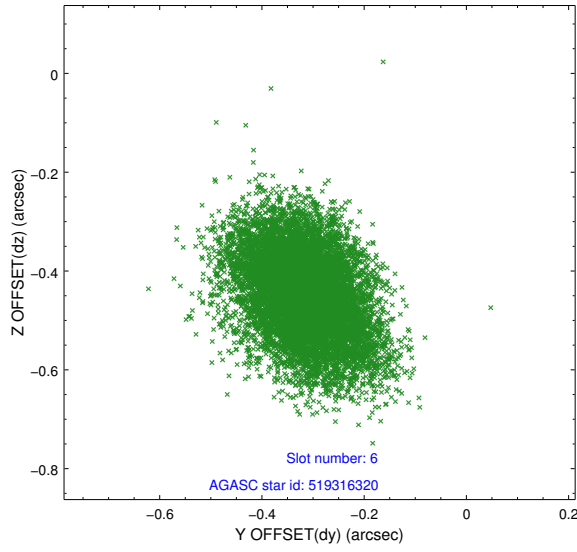
2.4.2 Slot 4



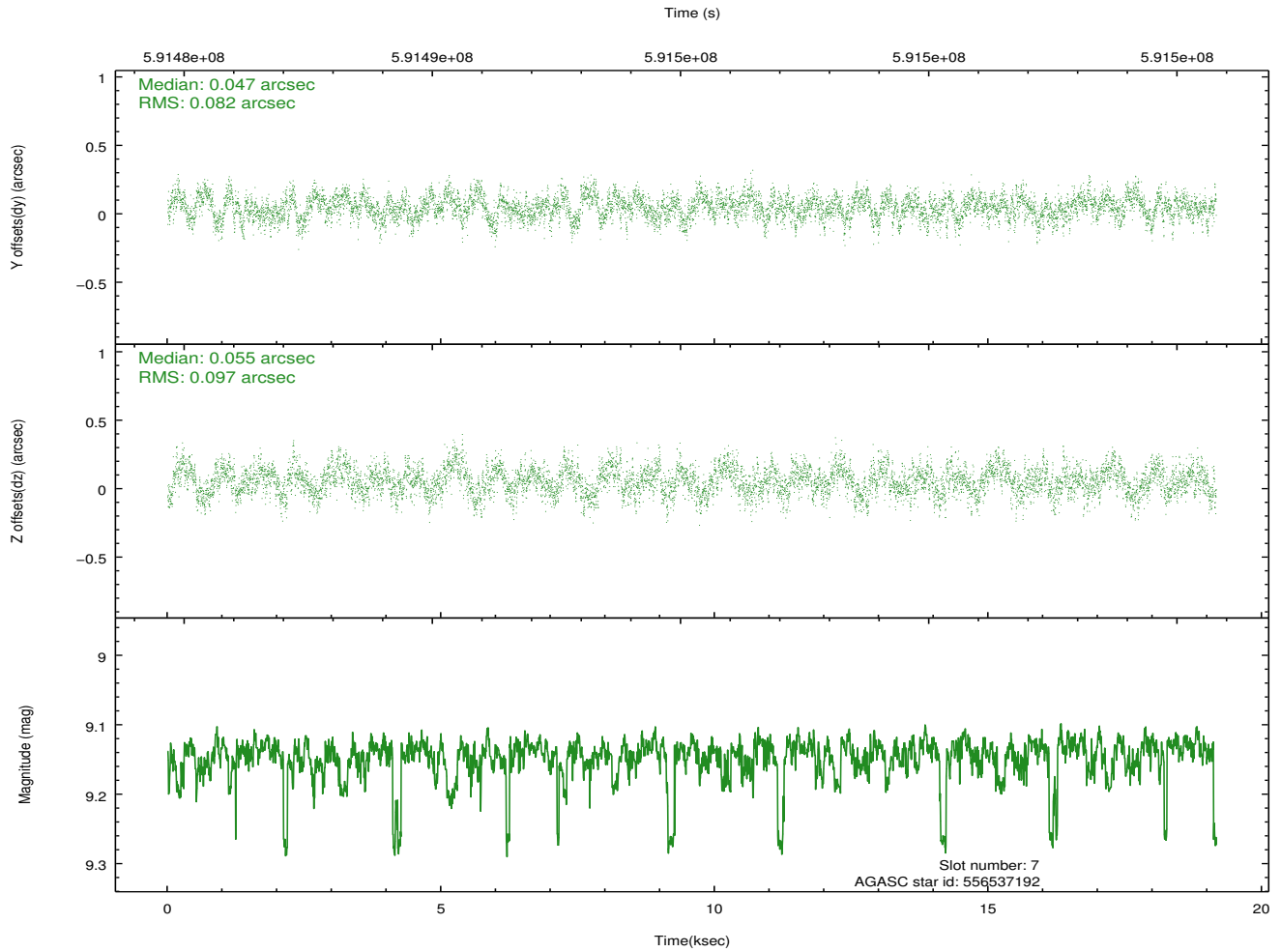
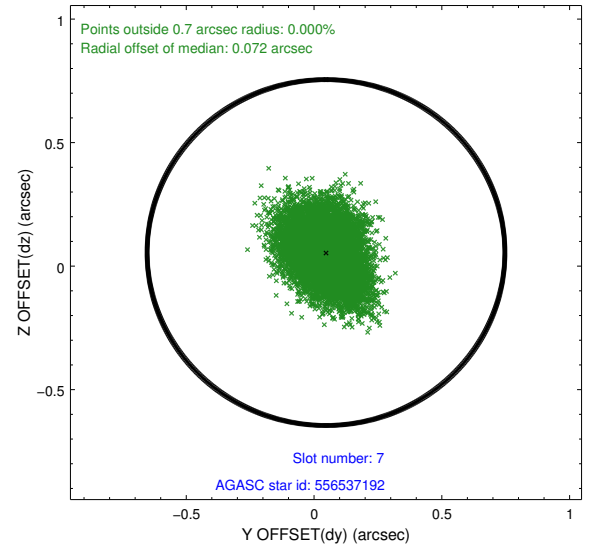
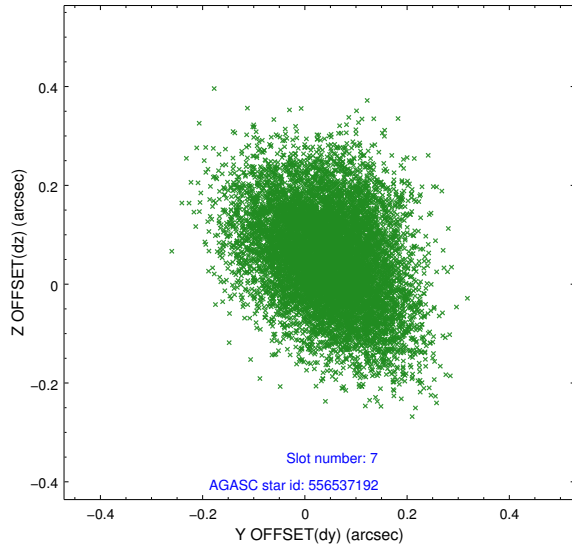
2.4.3 Slot 5



2.4.4 Slot 6

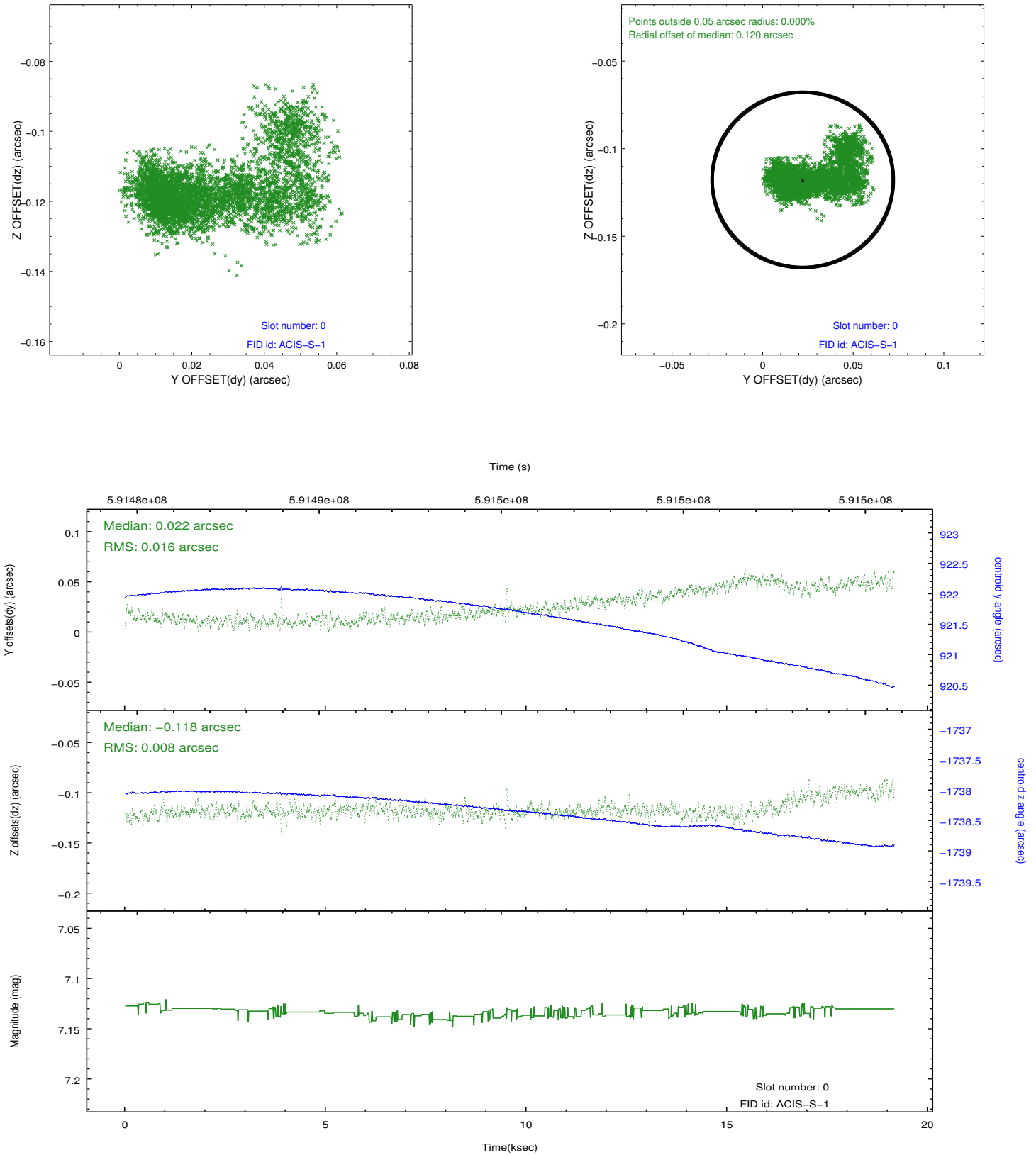


2.4.5 Slot 7

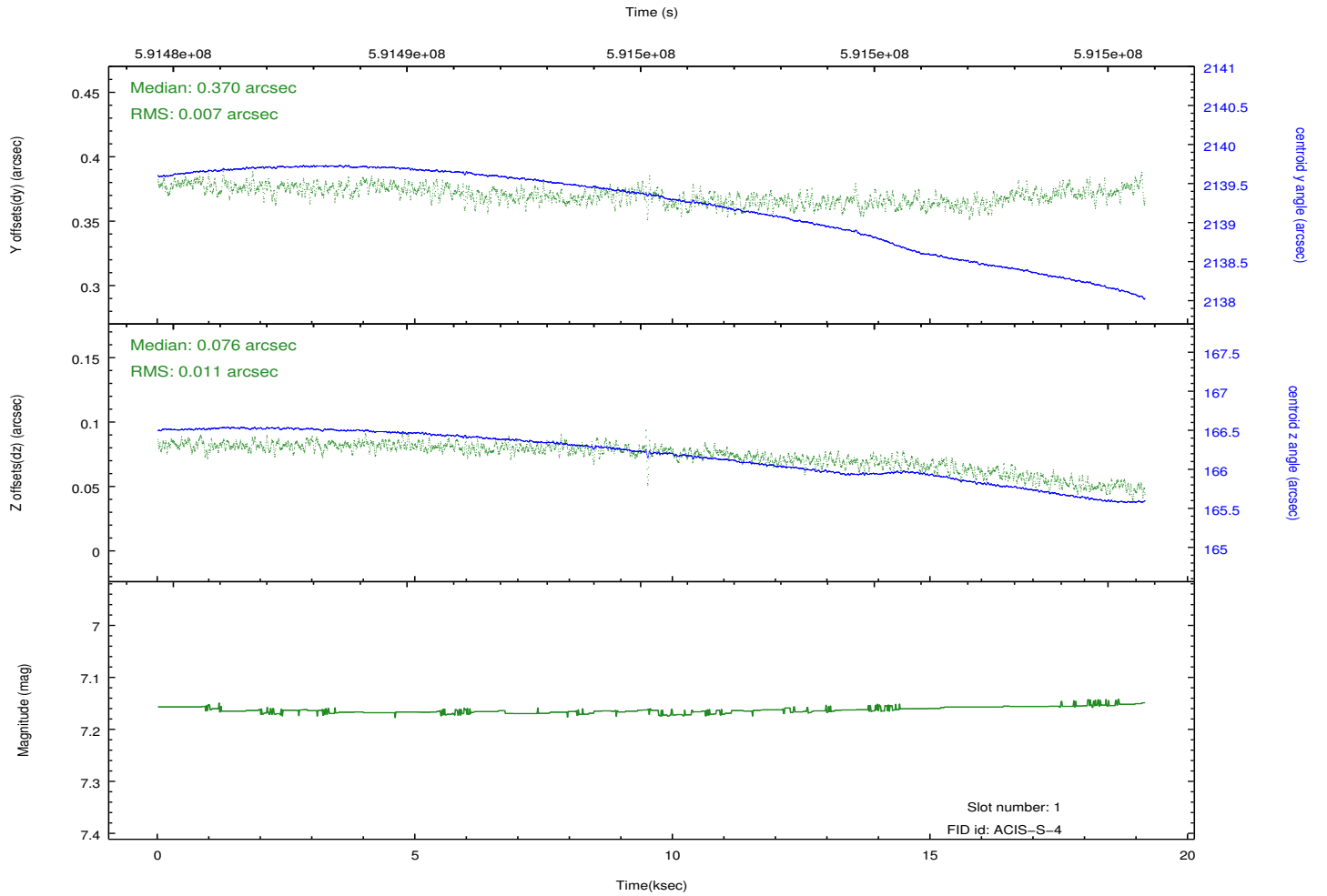
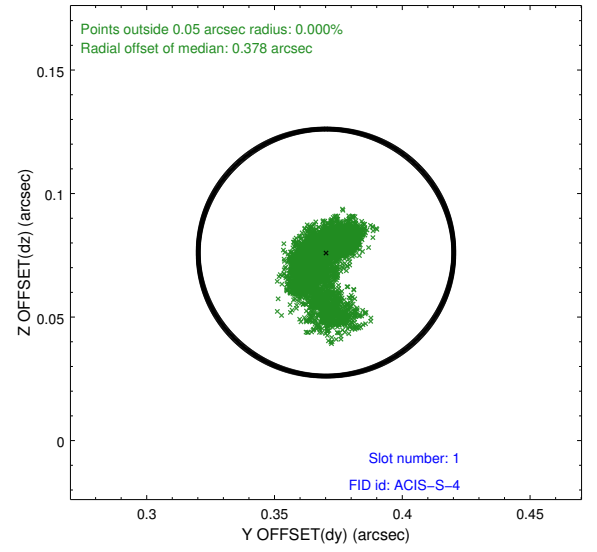
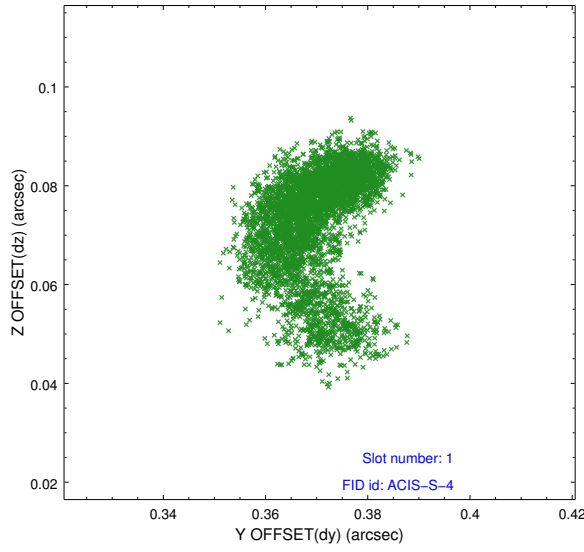


2.5 FID Slots

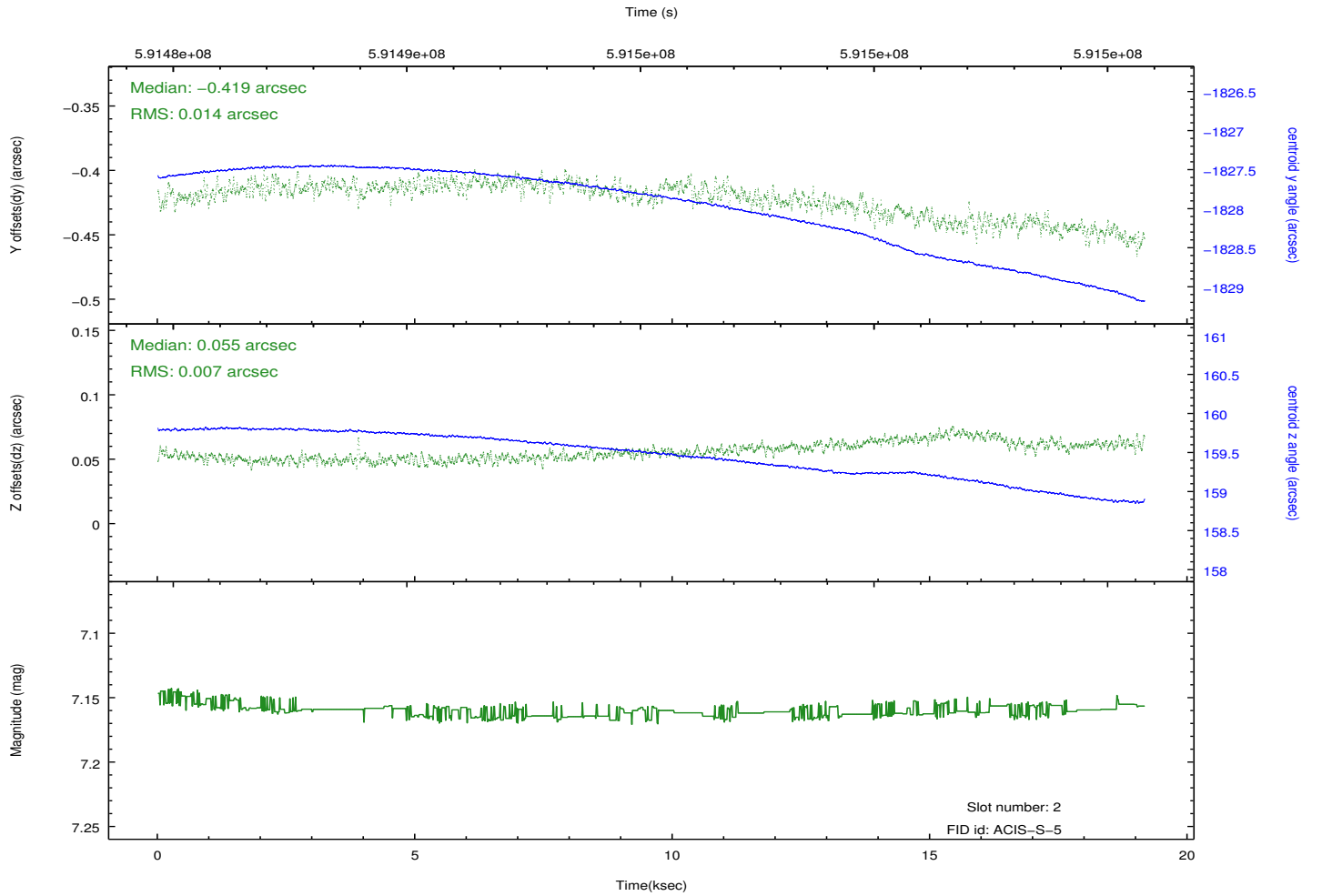
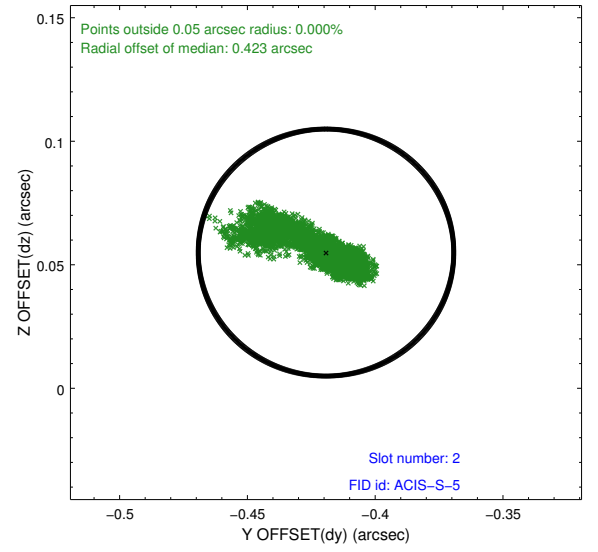
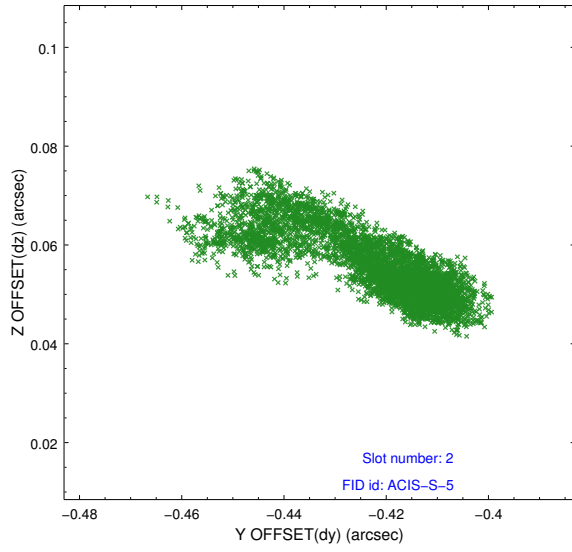
2.5.1 Slot 0



2.5.2 Slot 1



2.5.3 Slot 2



A Summary

A.1 Status

V&V Scientist	Joy Nichols
V&V Date (YYYY-MM-DD)	2016.09.30
V&V Edition	1
V&V Disposition and Status	OK
V&V Charge Time	18.795300144672

A.2 Comments