

# V&V Reference Report

## L2 ASCDS Version : 10.5.1.1

Observation 17893 - L2 Version 1  
Chandra X-Ray Center

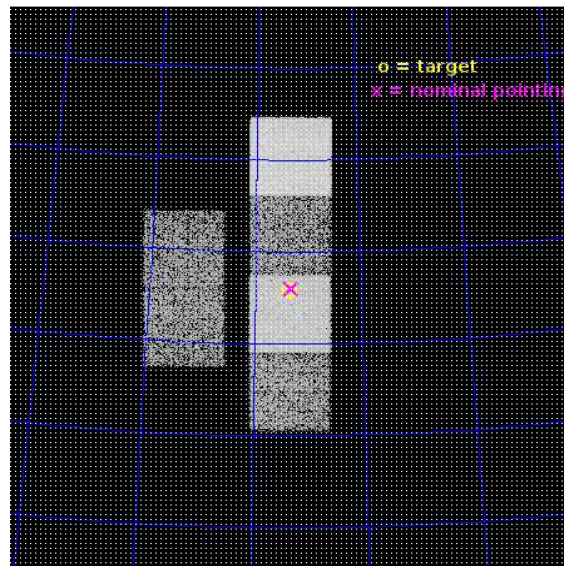
L2 Processing Date : Oct 10 2016

## Contents

<b>1</b>	<b>Front</b>	<b>2</b>
<b>2</b>	<b>OBI</b>	<b>3</b>
2.1	OBI . . . . .	3
2.1.1	Images . . . . .	3
2.1.2	Bias . . . . .	3
2.1.3	Parameters . . . . .	4
2.1.4	Events . . . . .	4
2.2	Compared Parameters . . . . .	5
2.3	Aspect . . . . .	6
2.4	Star Slots . . . . .	9
2.4.1	Slot 3 . . . . .	9
2.4.2	Slot 4 . . . . .	10
2.4.3	Slot 5 . . . . .	11
2.4.4	Slot 6 . . . . .	12
2.4.5	Slot 7 . . . . .	13
2.5	FID Slots . . . . .	14
2.5.1	Slot 0 . . . . .	14
2.5.2	Slot 1 . . . . .	15
2.5.3	Slot 2 . . . . .	16
<b>A</b>	<b>Summary</b>	<b>17</b>
A.1	Status . . . . .	17
A.2	Comments . . . . .	17

# 1 Front

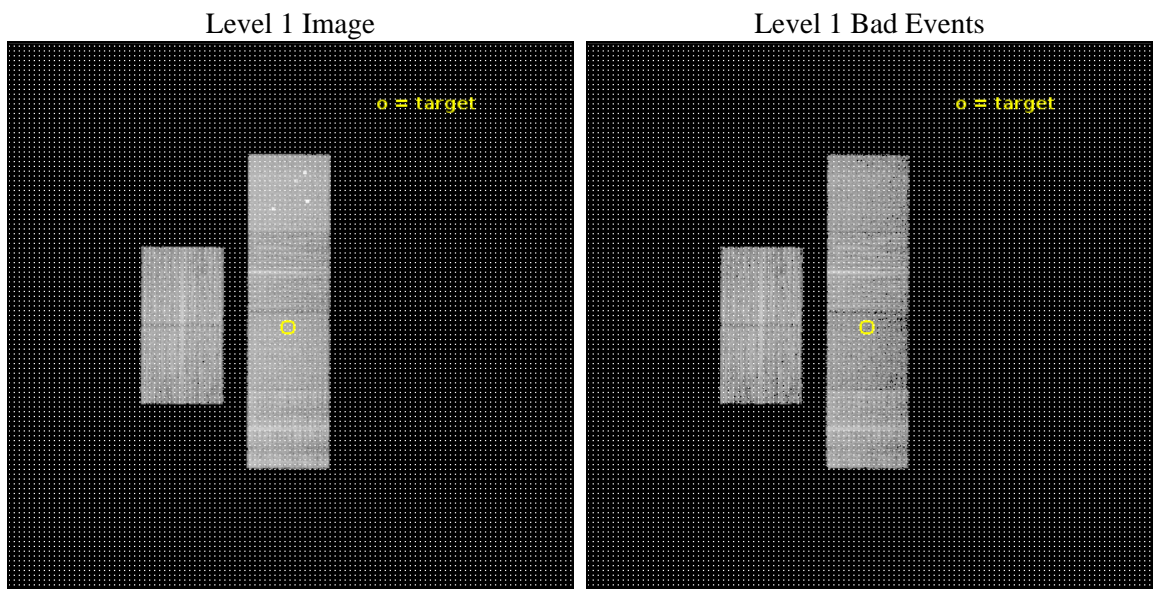
seq_num	502512	Sequence number
obs_id	17893	Observation id
title	Chandra Observations of New X-ray Supernovae	Proposal title
observer	David Pooley	Principal investigator
object	SN 2016gfy	Source name
dtcycle	0	&#160
cycle	P	events from which exps? Prim/Second/Both
ra_targ	111.681958	Observer's specified target RA [deg]
dec_targ	85.764361	Observer's specified target Dec [deg]
ra_nom	111.63733031148	Nominal RA [deg]
dec_nom	85.766714533205	Nominal Dec [deg]
roll_nom	90.201115050692	Nominal Roll [deg]
revision	1	Processing version of data
ontime	9944.8897308111	Sum of GTIs [s]
livetime	9818.9615489459	Livetime [s]
ontime2	9944.9307707548	Sum of GTIs [s]
ontime3	9944.7666107416	Sum of GTIs [s]
ontime5	9944.8486907482	Sum of GTIs [s]
ontime6	9944.8076508045	Sum of GTIs [s]
ontime7	9944.8897308111	Sum of GTIs [s]
ontime8	9944.7255707979	Sum of GTIs [s]
l2events	102361	Number of level 2 events



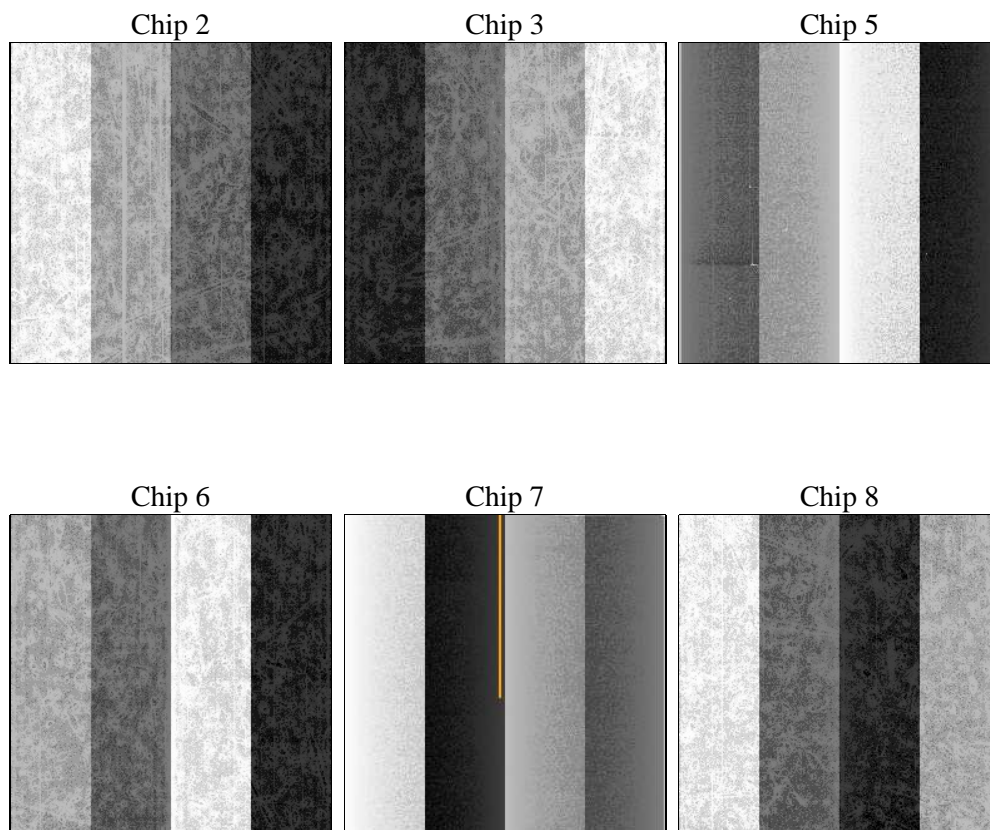
## 2 OBI

### 2.1 OBI

#### 2.1.1 Images



#### 2.1.2 Bias



### 2.1.3 Parameters

obi_num	0	Obi number	sched_exp_time	10000.000000	[s] Scheduled observation exposure time
ascdsver	10.5.1.1	Processing system revision	ontime	9944.8897308111	Sum of GTIs [s]
caldsver	4.7.2	&#160	ontime2	9944.9307707548	Sum of GTIs [s]
date	2016-10-11T01:34:00	Date and time of file creation	ontime3	9944.7666107416	Sum of GTIs [s]
revision	1	Processing version of data	ontime5	9944.8486907482	Sum of GTIs [s]
			ontime6	9944.8076508045	Sum of GTIs [s]
			ontime7	9944.8897308111	Sum of GTIs [s]
			ontime8	9944.7255707979	Sum of GTIs [s]
			l1events	437379	Number of level 1 events

### 2.1.4 Events

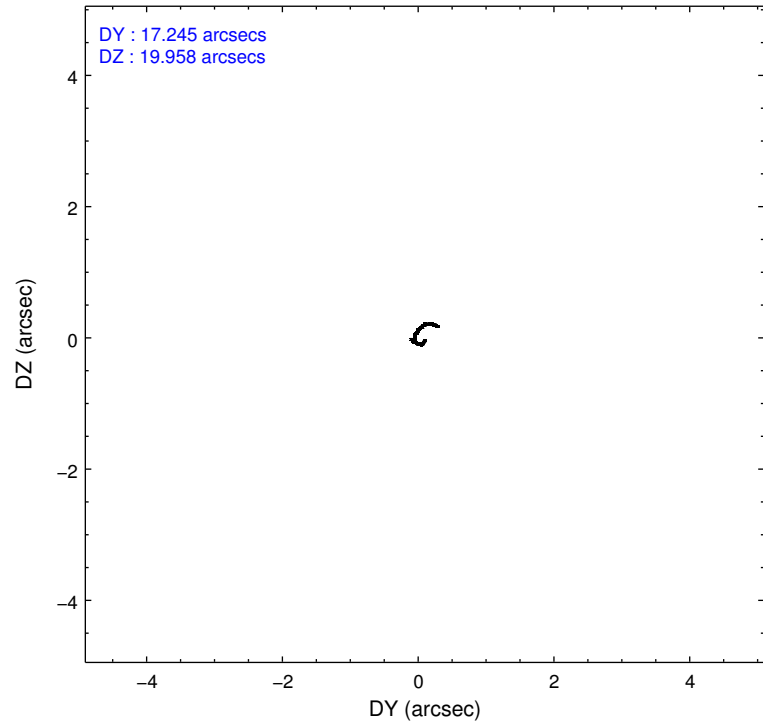
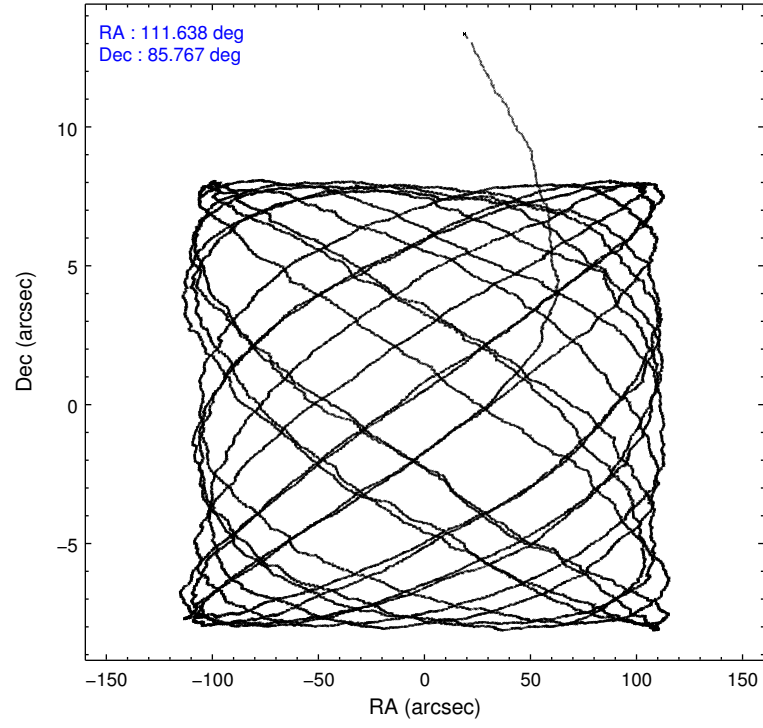
	ccd 2	ccd 3	ccd 5	ccd 6	ccd 7	ccd 8		ccd 2	ccd 3	ccd 5	ccd 6	ccd 7	ccd 8
level 1 events	66215	61689	94229	62281	69824	83141	grade 0 events	2607	2575	7803	2565	3486	6454
rejected events	59101	55072	43398	55165	35962	59433		3%	4%	8%	4%	4%	7%
rejected %	89%	89%	46%	88%	51%	71%	grade 1 events	39	45	269	33	111	69
								0%	0%	0%	0%	0%	0%
							grade 2 events	1902	1403	15059	1547	7492	5938
								2%	2%	15%	2%	10%	7%
							grade 3 events	667	695	1702	755	2960	2468
								1%	1%	1%	1%	4%	2%
							grade 4 events	701	639	1751	709	2839	2357
								1%	1%	1%	1%	4%	2%
							grade 5 events	2255	2555	6919	2610	7273	4120
								3%	4%	7%	4%	10%	4%
							grade 6 events	1244	1307	24556	1549	17111	6522
								1%	2%	26%	2%	24%	7%
							grade 7 events	56800	52470	36170	52513	28552	55213
								85%	85%	38%	84%	40%	66%

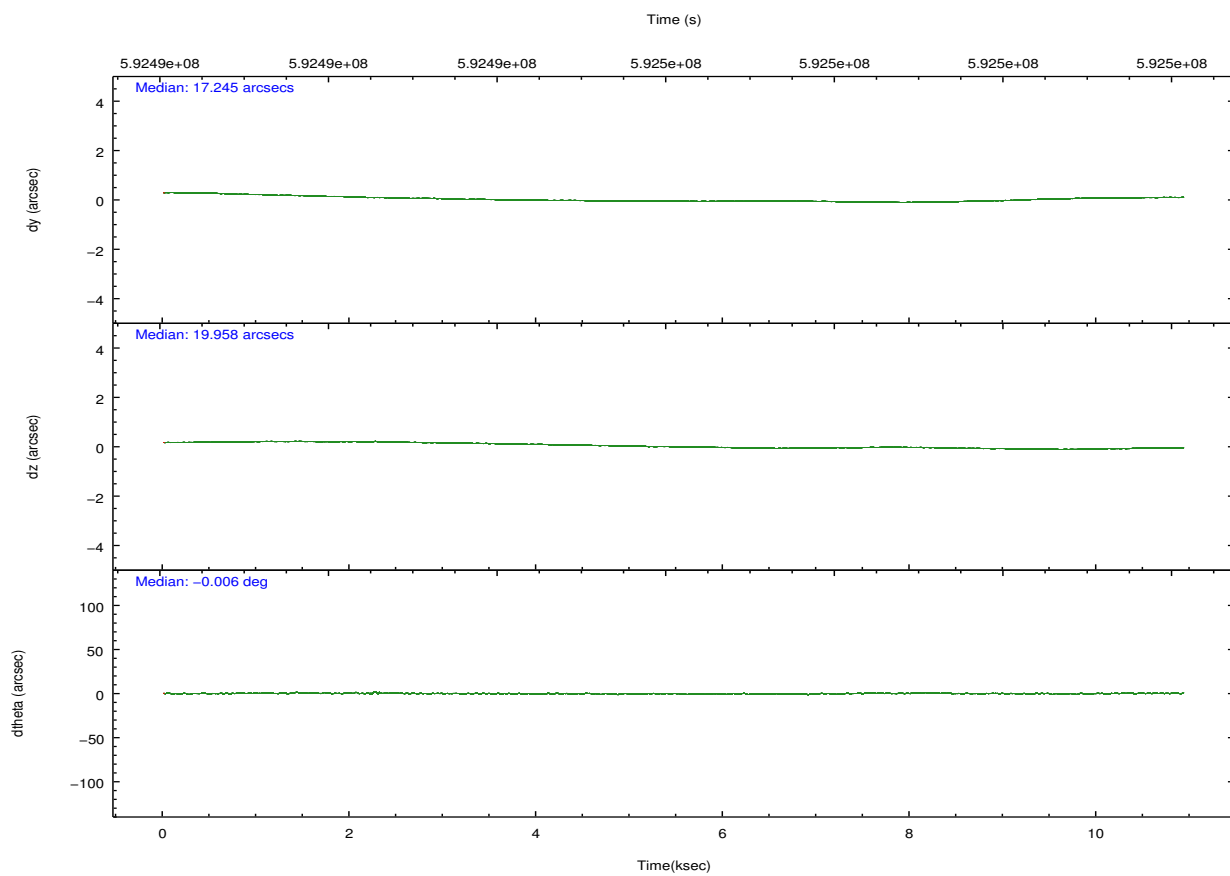
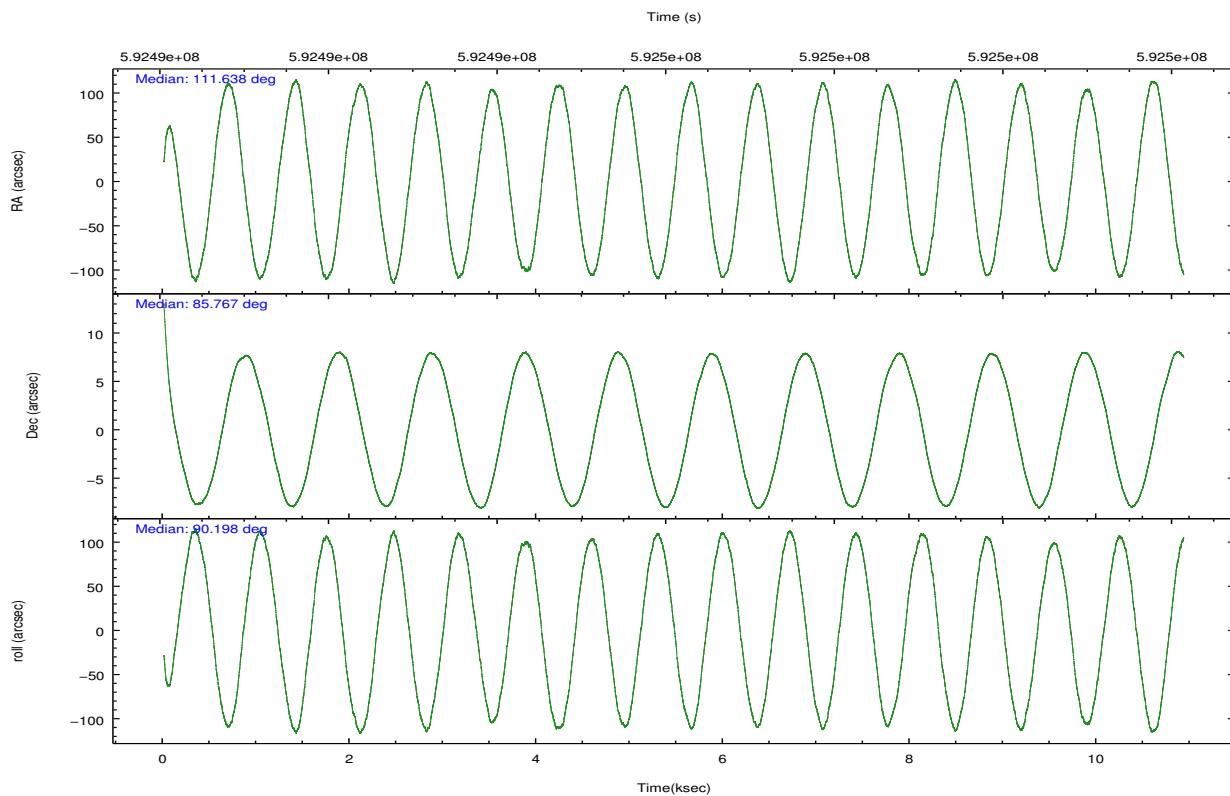


## 2.2 Compared Parameters

Parameter	Planned	Actual	Parameter	Planned	Actual
Instrument	ACIS	ACIS	Obspar format version number	7	7
Detector	ACIS-235678	ACIS-235678	Obspar file type	PREDICTED	ACTUAL
Grating	NONE	NONE	Obspar update status	NONE	UPDATED
Data mode	VFAINT	VFAINT	CCD I0 on	N	N
Observation mode	POINTING	POINTING	CCD I1 on	N	N
[deg] Pointing RA	111.827657	111.6373303114841	CCD I2 on	O1	Y
[deg] Pointing Dec	85.743180	85.76671453320475	CCD I3 on	O2	Y
[deg] Pointing Roll	89.854699	90.20111505069175	CCD S0 on	N	N
[mm] SIM focus pos	-0.684267	-0.6828225247311905	CCD S1 on	O3	Y
[mm] SIM defocus	0	0.001444936568705701	CCD S2 on	Y	Y
[mm] SIM translation stage pos	-190.132523	-190.1400660498719	CCD S3 on	Y	Y
[mm] SIM translation stage offset	0	0.00754346686406393	CCD S4 on	Y	Y
[s] Observation start time (MET)	592491566.184000	592489858.57695	CCD S5 on	N	N
Observation start date	2016-10-10T12:58:18	2016-10-10T12:30:58	Number of optional ACIS chips dropped	0	0
[s] Observation end time (MET)	592501566.184000	592502646.99019	On-chip summing requested	N	N
Observation end date	2016-10-10T15:44:58	2016-10-10T16:04:06	Subarray requested	NONE	NONE
Read mode	TIMED	TIMED	Alternating exposures requested	N	N
			[s] Primary exposure time	0.000000	3.2

## 2.3 Aspect



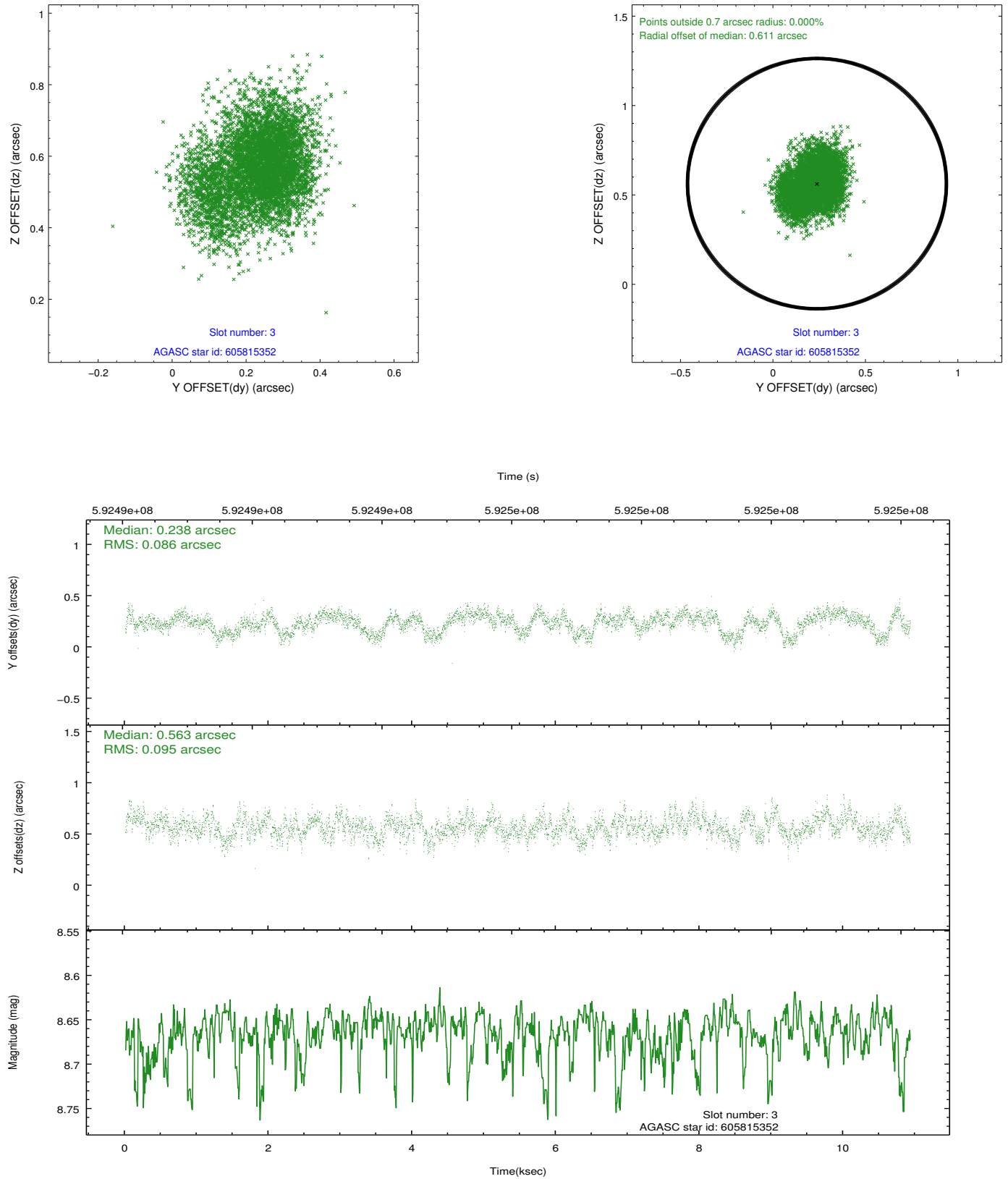


### Slot Statistics

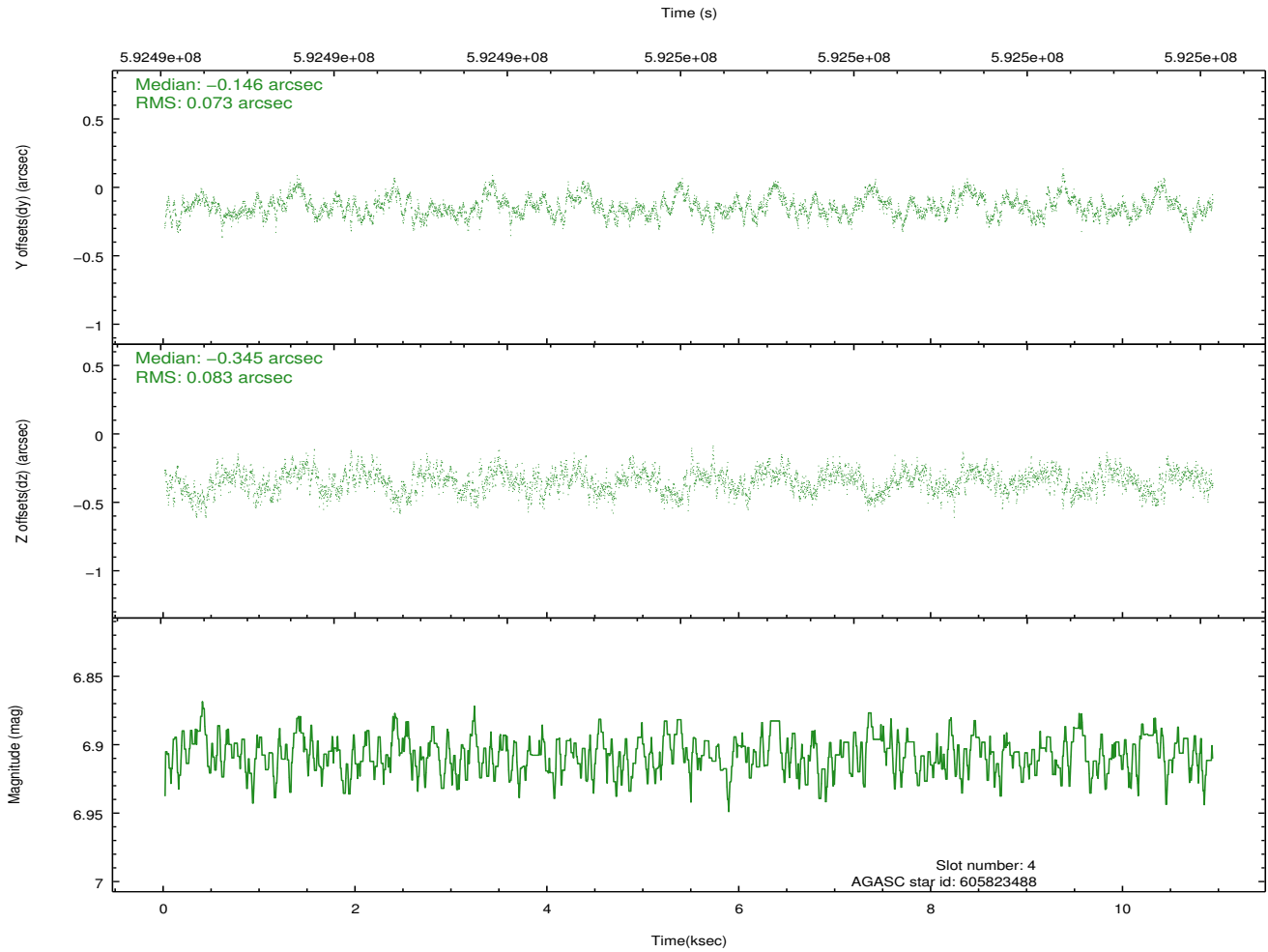
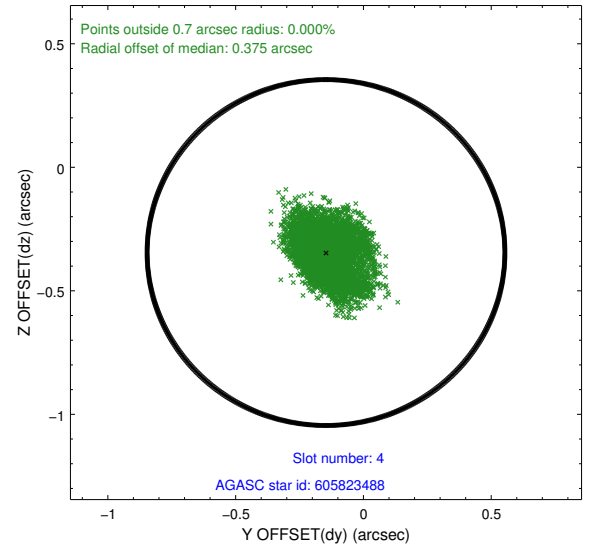
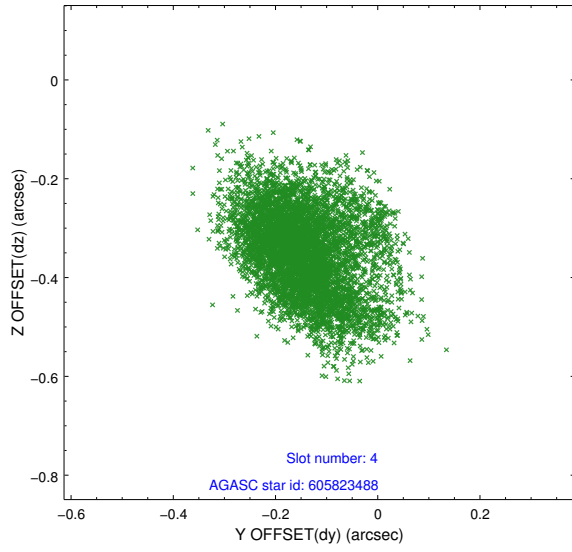
slot	status	used	id	mag	n_pts	med_dy	med_dz	dr1	dr2	ra	dec	mean_y	mean_z
0	FID		ACIS-S-2	6.95	2665	-0.205	-0.091	0.007	0.011	0.000000	0.000000	-770.47	-1741.63
1	FID		ACIS-S-4	7.06	2664	0.455	0.123	0.008	0.014	0.000000	0.000000	2143.20	166.65
2	FID		ACIS-S-5	7.05	2665	-0.282	-0.023	0.008	0.014	0.000000	0.000000	-1822.83	160.61
3	GUIDE	used	605815352	8.66	5328	0.238	0.563	0.137	0.220	119.197023	85.220299	-1734.54	-2208.37
4	GUIDE	used	605823488	6.91	5329	-0.146	-0.345	0.118	0.194	107.414621	85.570014	-579.52	1223.83
5	GUIDE	used	605824608	9.01	5326	-0.038	-0.121	0.300	0.413	109.255248	85.176243	-2025.28	773.55
6	GUIDE	used	606339744	9.10	5322	-0.055	0.010	0.225	0.340	112.256096	86.307705	2032.44	-93.49
7	GUIDE	used	606340952	9.17	5320	0.016	-0.099	0.223	0.332	117.163804	86.333781	2186.91	-1220.88

## 2.4 Star Slots

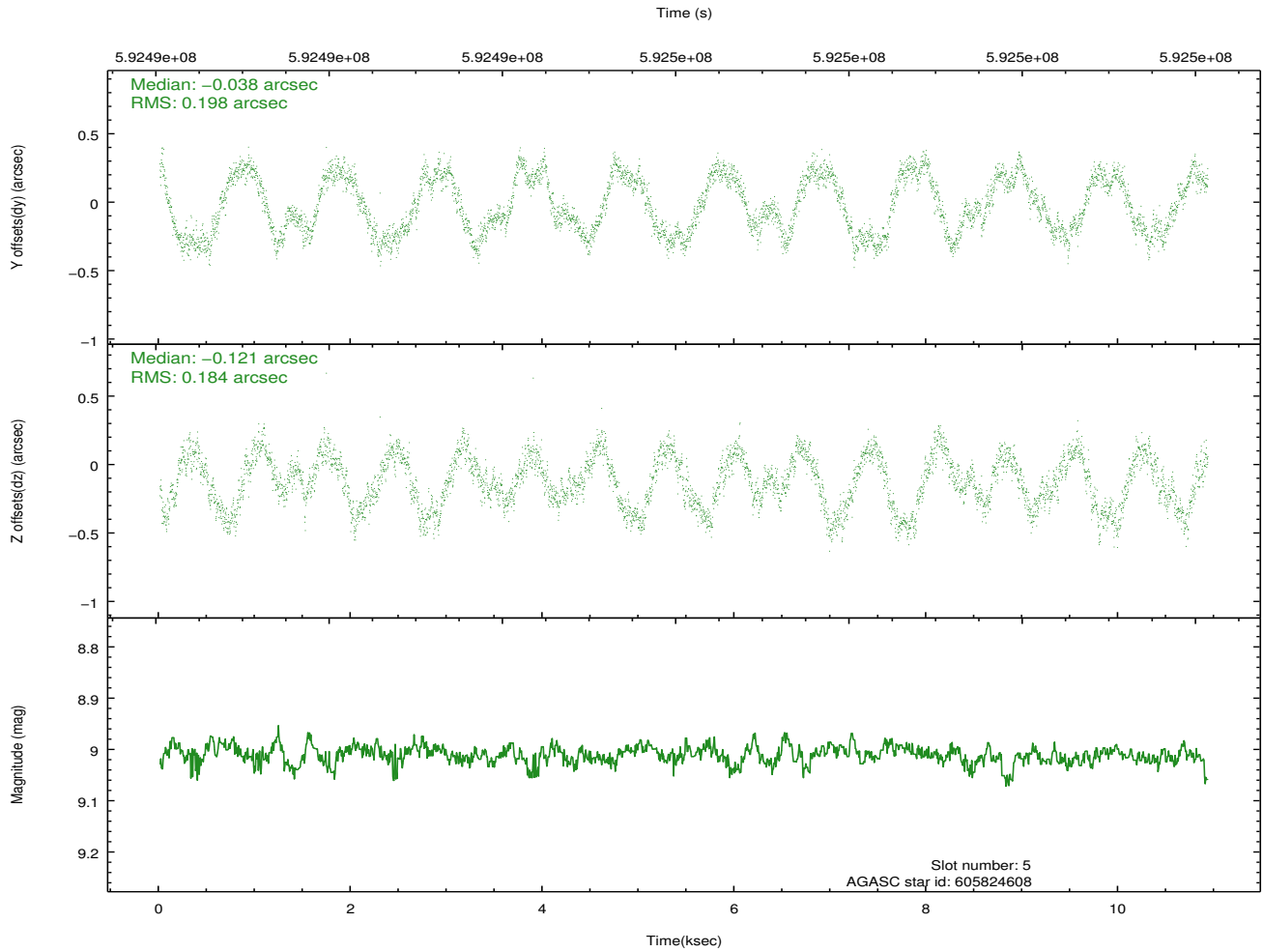
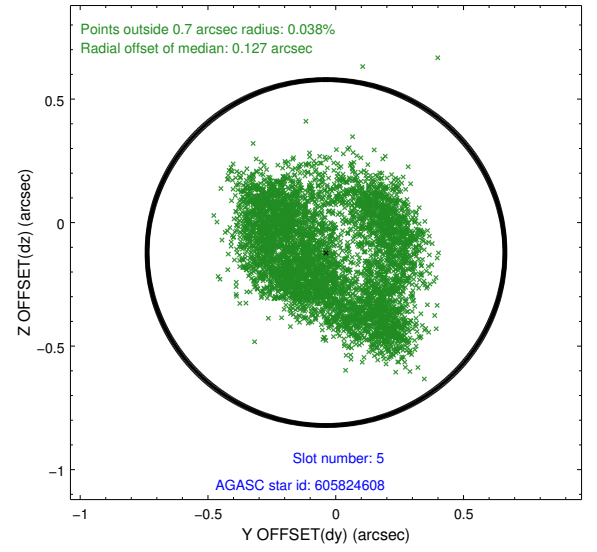
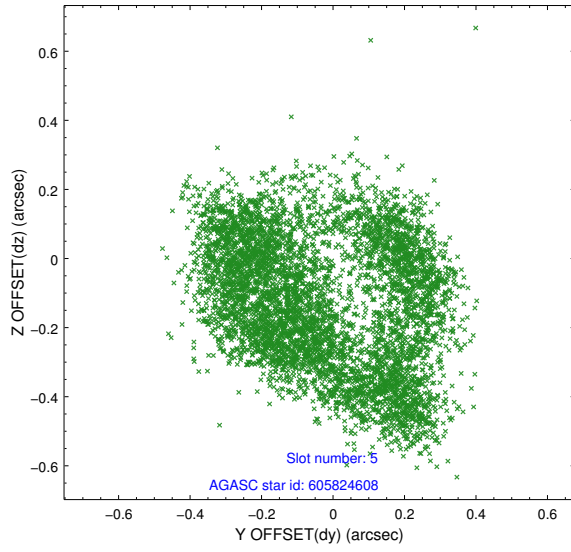
### 2.4.1 Slot 3



## 2.4.2 Slot 4

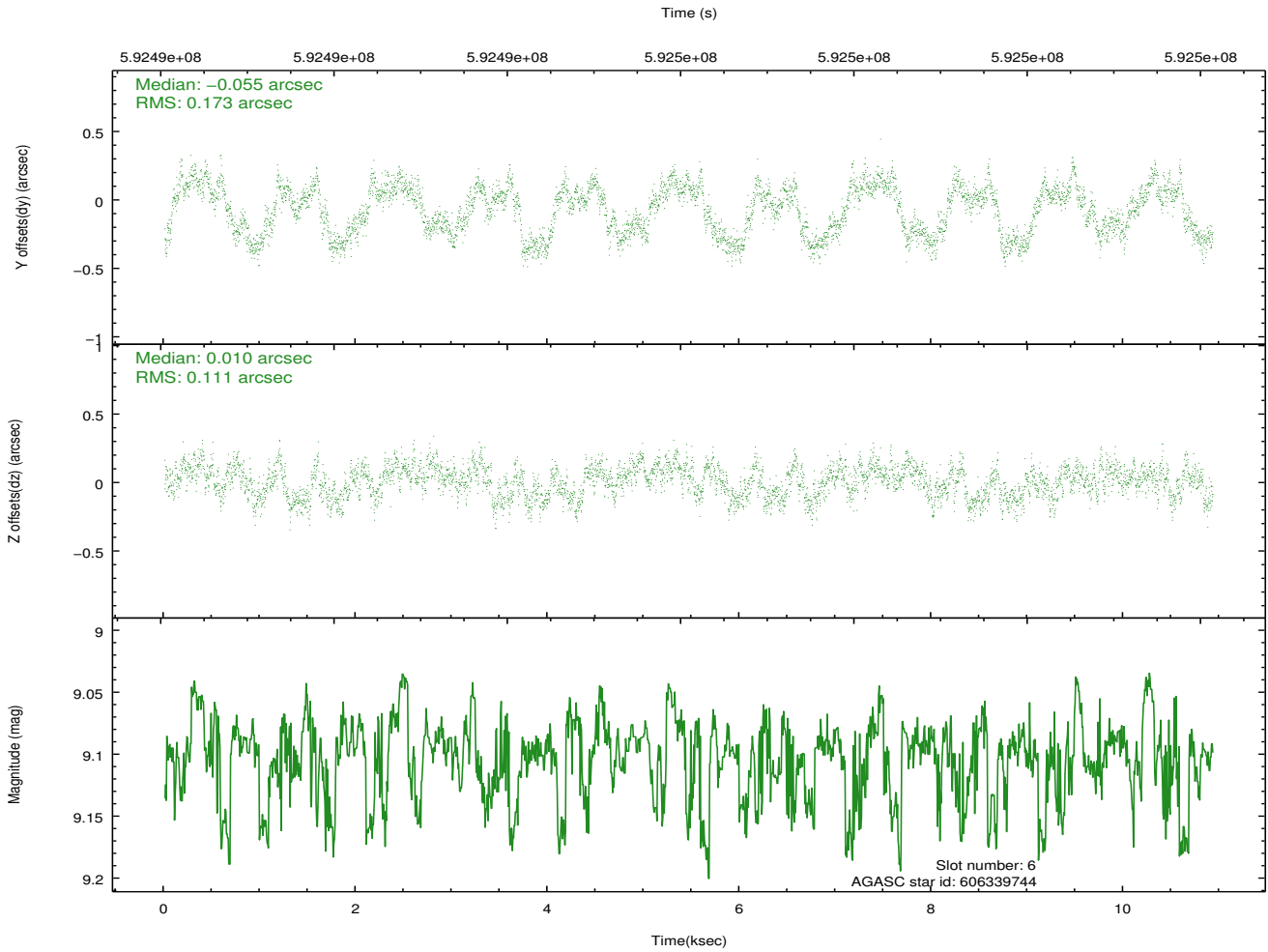
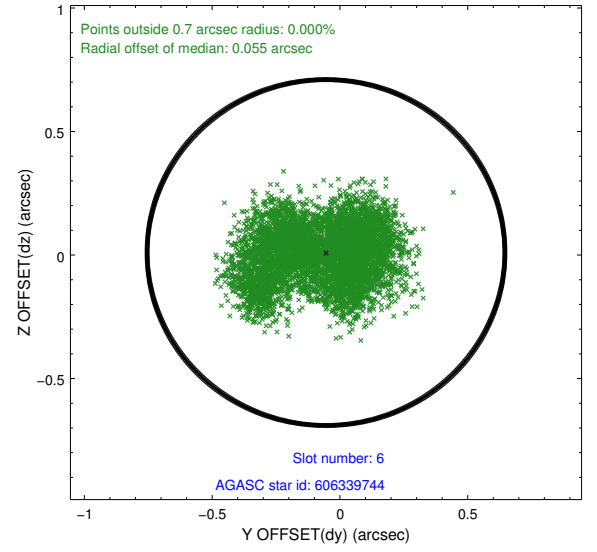
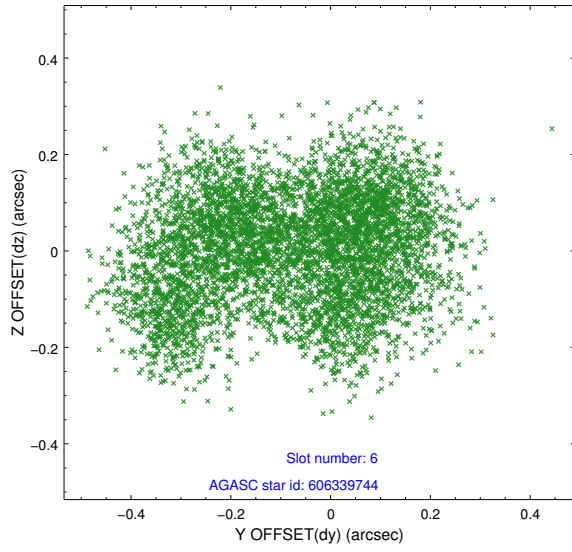


### 2.4.3 Slot 5

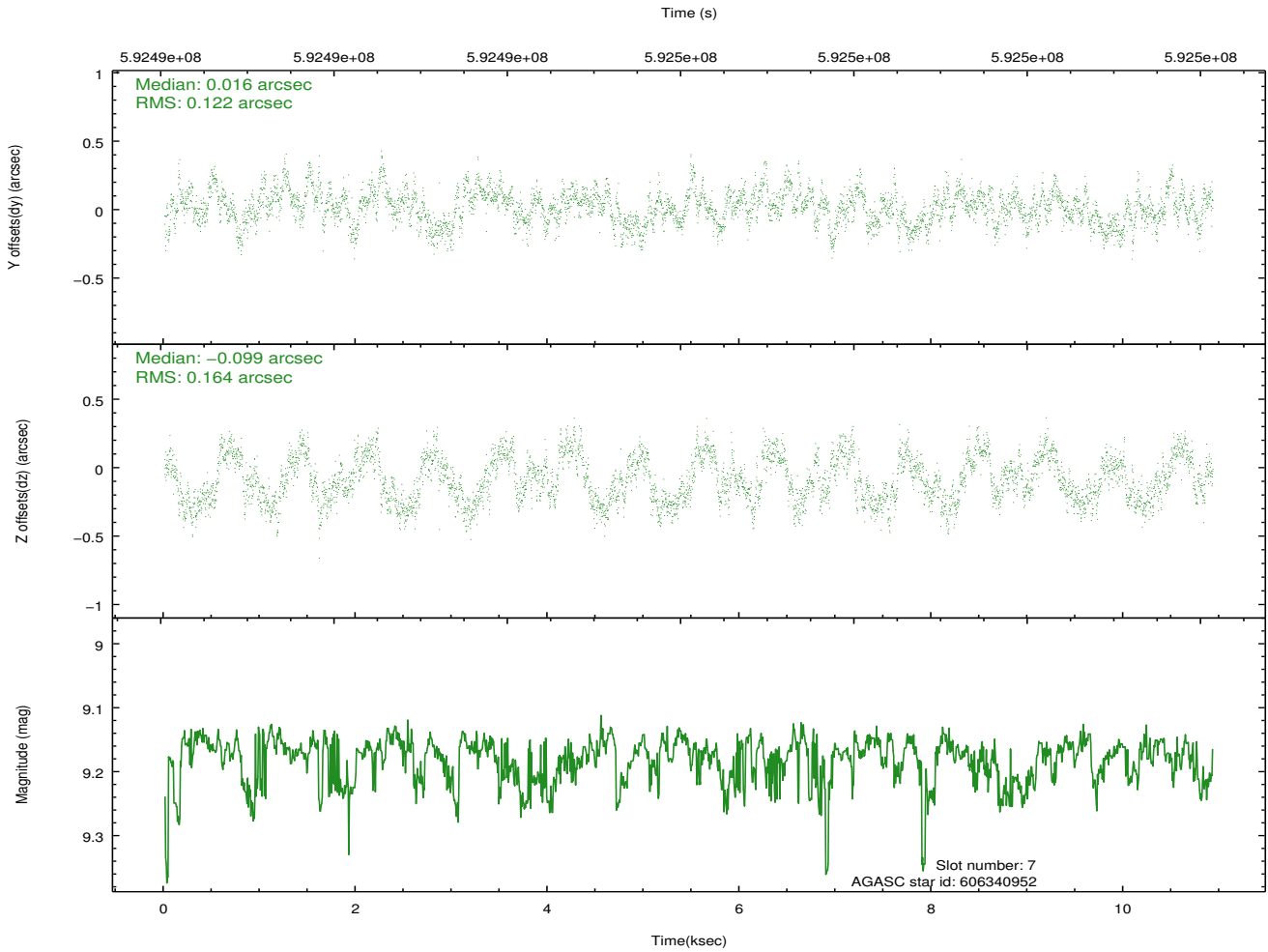
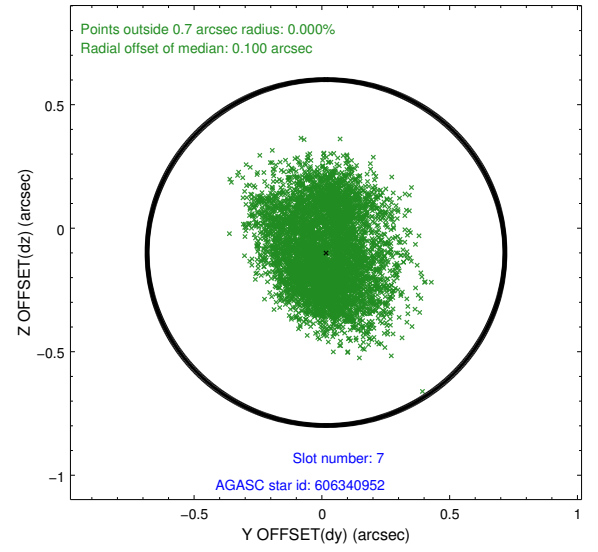
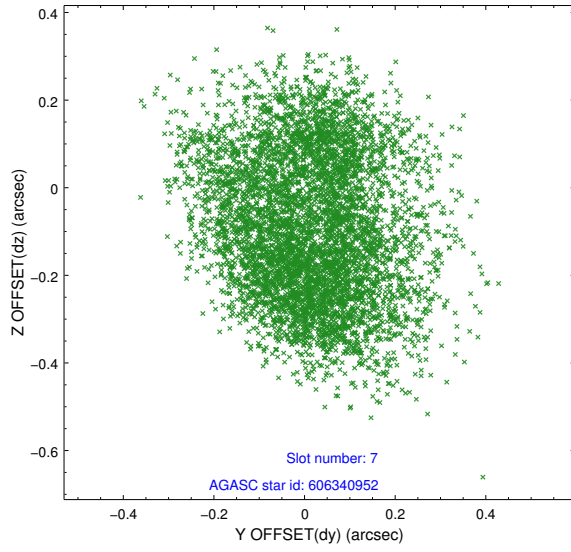




## 2.4.4 Slot 6

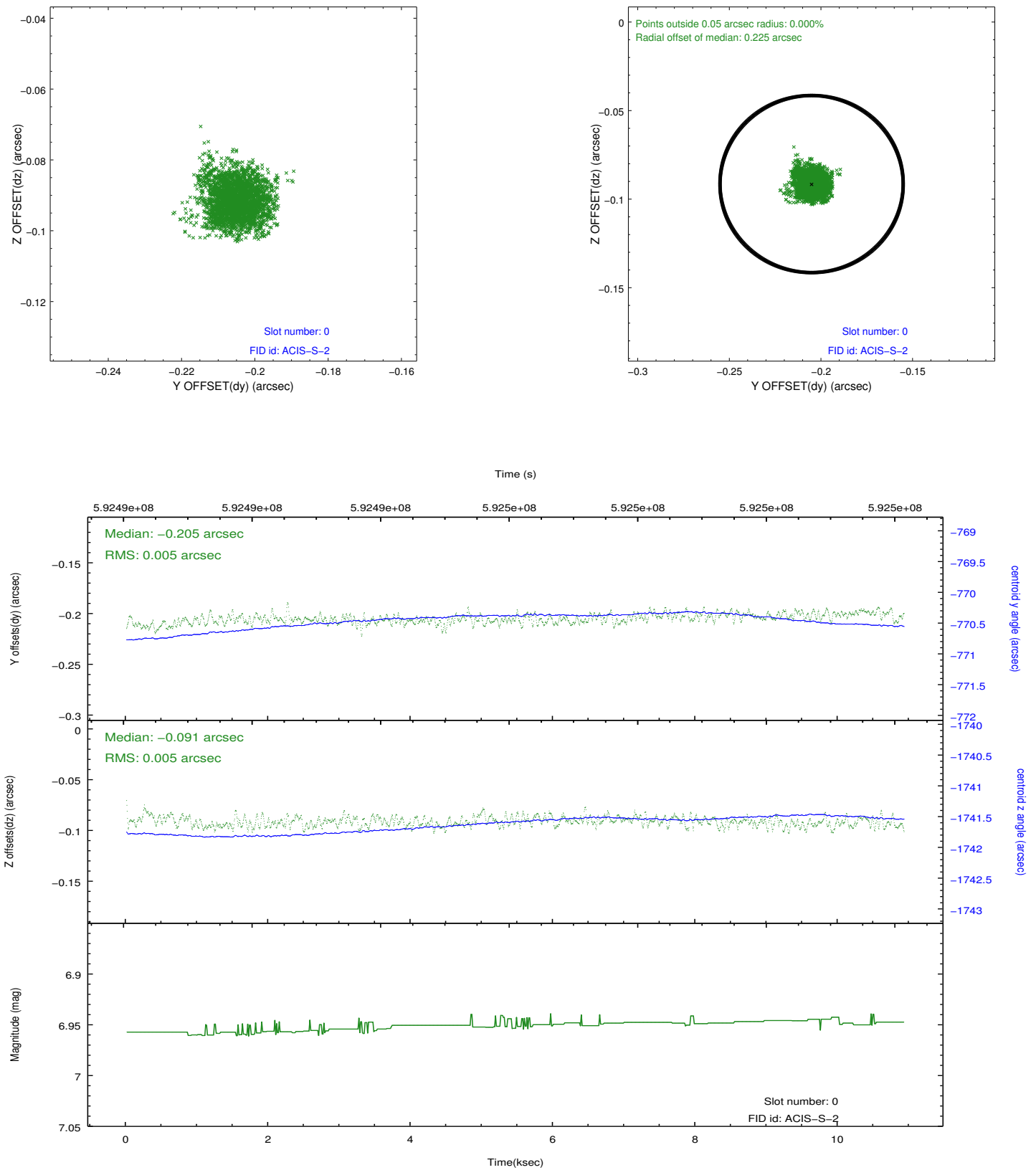


## 2.4.5 Slot 7

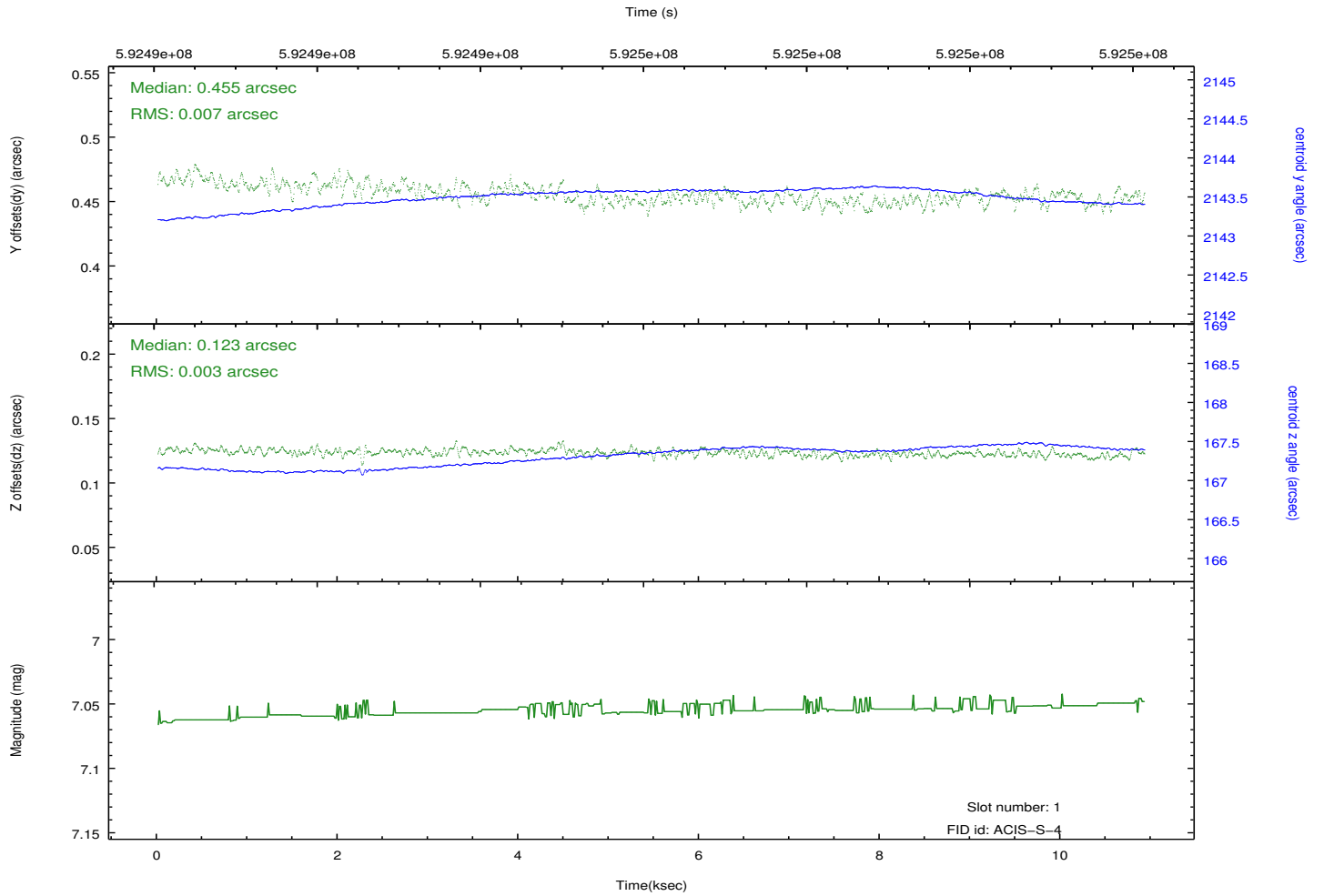
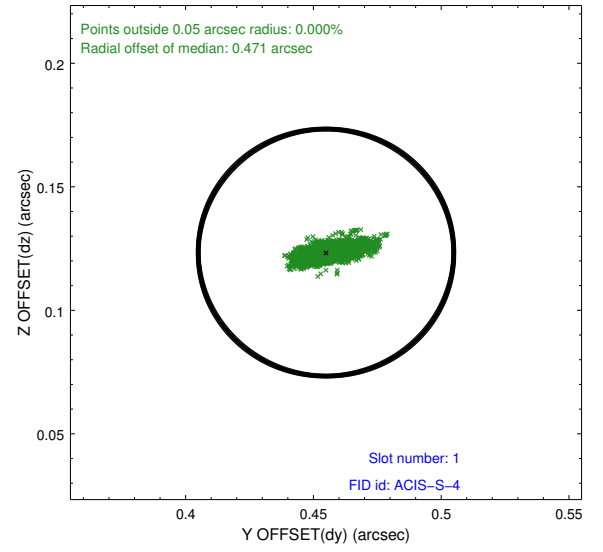
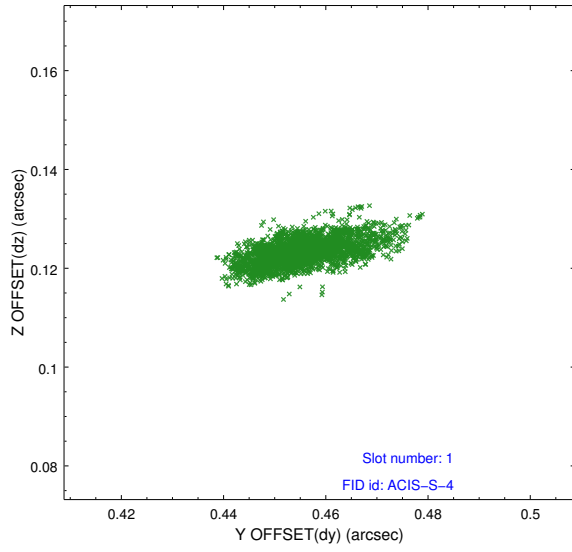


## 2.5 FID Slots

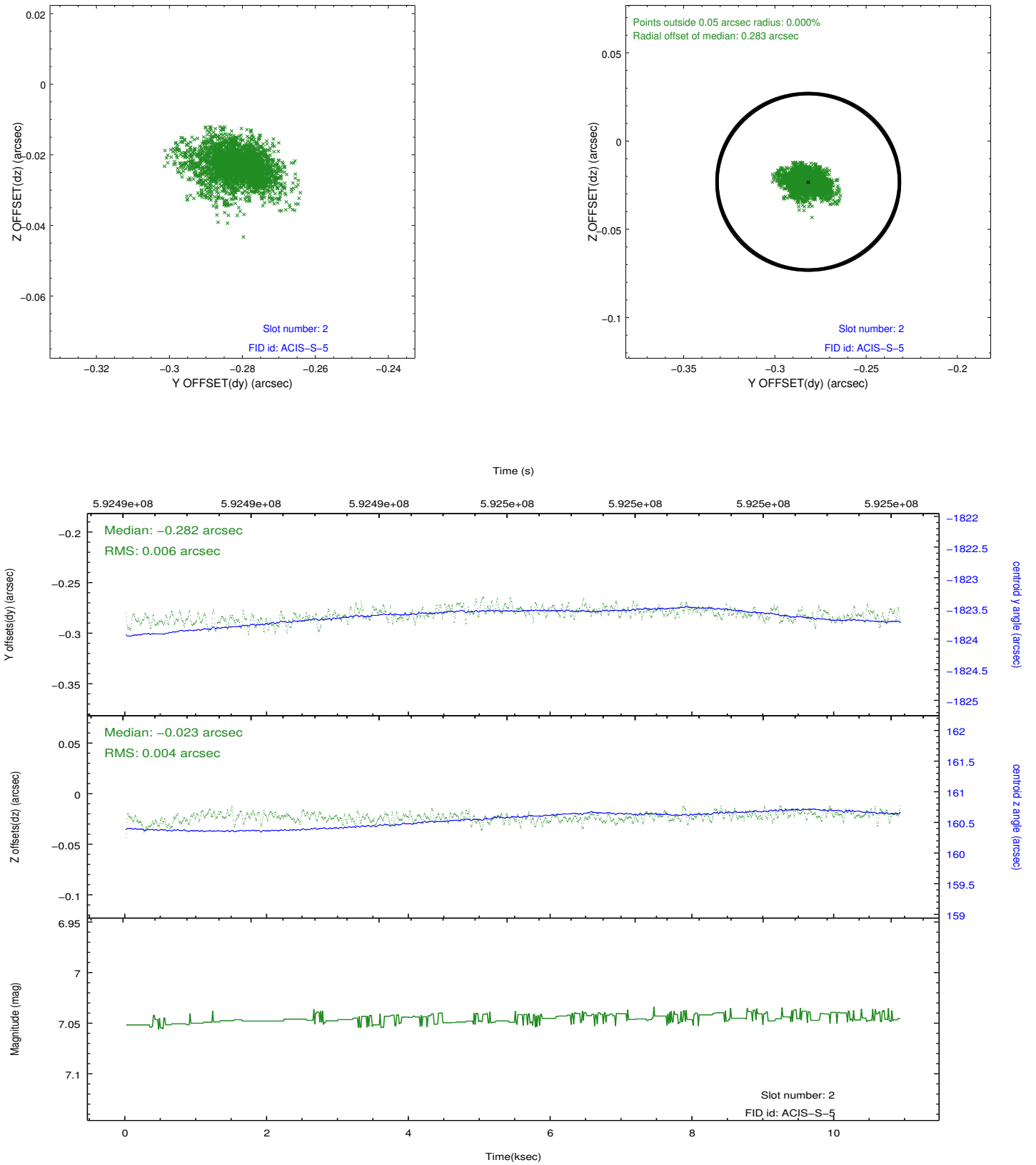
### 2.5.1 Slot 0



## 2.5.2 Slot 1



### 2.5.3 Slot 2



## **A Summary**

### **A.1 Status**

V&V Scientist	Joy Nichols
V&V Date (YYYY-MM-DD)	2016.10.11
V&V Edition	1
V&V Disposition and Status	OK
V&V Charge Time	9.9448897308111

### **A.2 Comments**