

V&V Reference Report

L2 ASCDS Version : 10.4.2.1

Observation 17865 - L2 Version 1
Chandra X-Ray Center

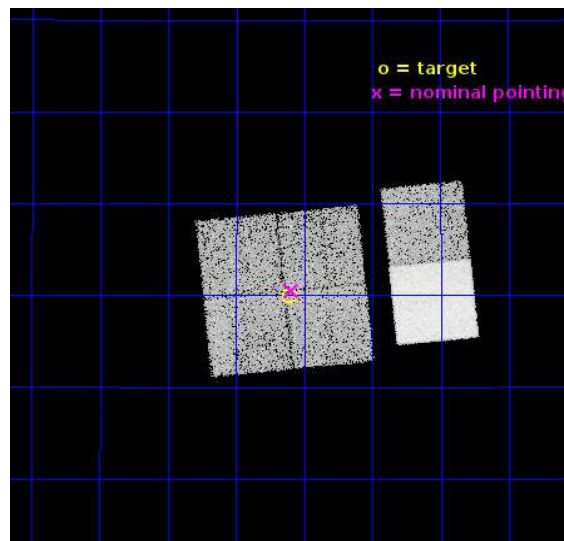
L2 Processing Date : Nov 8 2015

Contents

1	Front	2
2	OBI	3
2.1	OBI	3
2.1.1	Images	3
2.1.2	Bias	3
2.1.3	Parameters	4
2.1.4	Events	4
2.2	Compared Parameters	5
2.3	Aspect	6
2.4	Star Slots	9
2.4.1	Slot 3	9
2.4.2	Slot 4	10
2.4.3	Slot 5	11
2.4.4	Slot 6	12
2.4.5	Slot 7	13
2.5	FID Slots	14
2.5.1	Slot 0	14
2.5.2	Slot 1	15
2.5.3	Slot 2	16
A	Summary	17
A.1	Status	17
A.2	Comments	17

1 Front

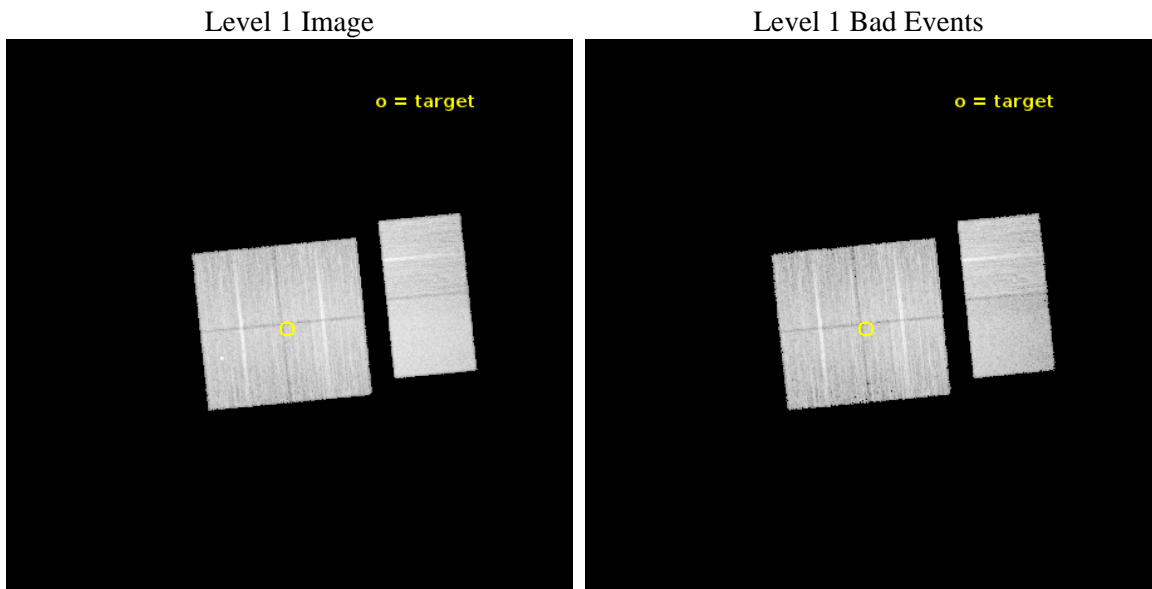
seq_num	401797	Sequence number
obs_id	17865	Observation id
title	X-ray Observations of New Gamma-Ray Bright Galactic Compact Binaries	
observer	Prof. Jay Strader	Principal investigator
object	3FGL J0502.6+1759	Source name
dtcycle	0	
cycle	P	events from which exps? Prim/Second/Both
ra_targ	75.651167	Observer's specified target RA [deg]
dec_targ	17.99875	Observer's specified target Dec [deg]
ra_nom	75.648740989145	Nominal RA [deg]
dec_nom	18.008525030602	Nominal Dec [deg]
roll_nom	84.209437803302	Nominal Roll [deg]
revision	1	Processing version of data
ontime	19945.600297213	Sum of GTIs [s]
livetime	19693.037096451	Livetime [s]
ontime0	19945.600297213	Sum of GTIs [s]
ontime1	19939.118286252	Sum of GTIs [s]
ontime2	19945.600297213	Sum of GTIs [s]
ontime3	19945.600297213	Sum of GTIs [s]
ontime6	19945.600297213	Sum of GTIs [s]
ontime7	19945.600297213	Sum of GTIs [s]
l2events	109372	Number of level 2 events



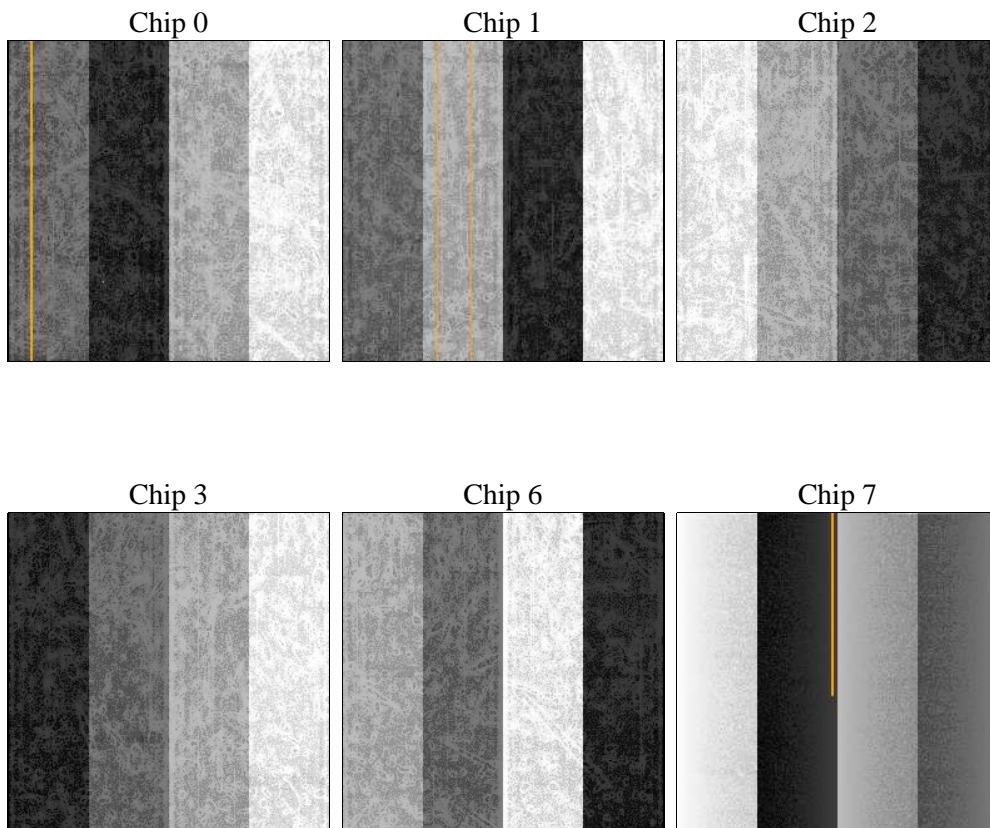
2 OBI

2.1 OBI

2.1.1 Images



2.1.2 Bias



2.1.3 Parameters

obi_num	0	Obi number	sched_exp_time	20000.000000	[s] Scheduled observation exposure time
ascdsver	10.4.2.1	Processing system revision	ontime	19945.600297213	Sum of GTIs [s]
caldsver	4.6.10a	 	ontime0	19945.600297213	Sum of GTIs [s]
date	2015-11-08T23:43:46	Date and time of file creation	ontime1	19939.118286252	Sum of GTIs [s]
revision	1	Processing version of data	ontime2	19945.600297213	Sum of GTIs [s]
			ontime3	19945.600297213	Sum of GTIs [s]
			ontime6	19945.600297213	Sum of GTIs [s]
			ontime7	19945.600297213	Sum of GTIs [s]
			l1events	645407	Number of level 1 events

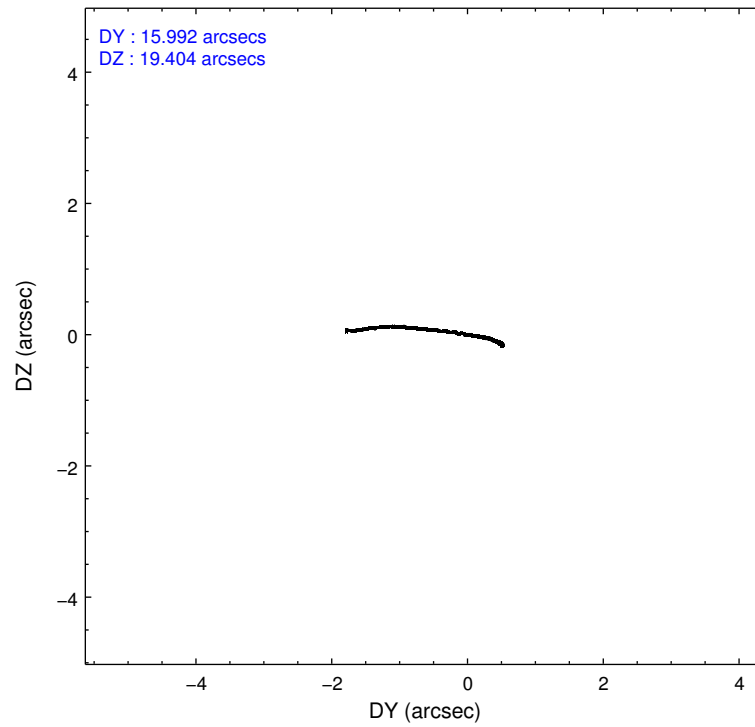
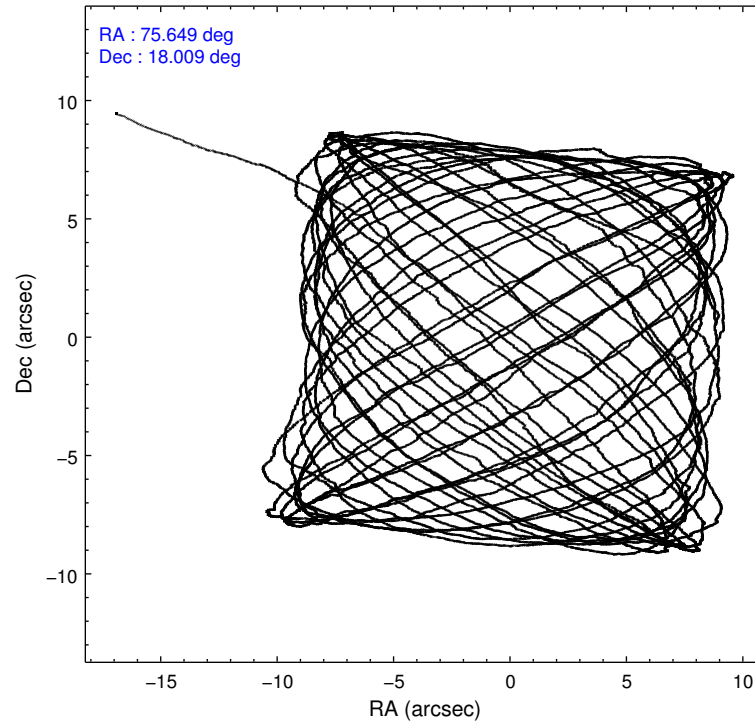
2.1.4 Events

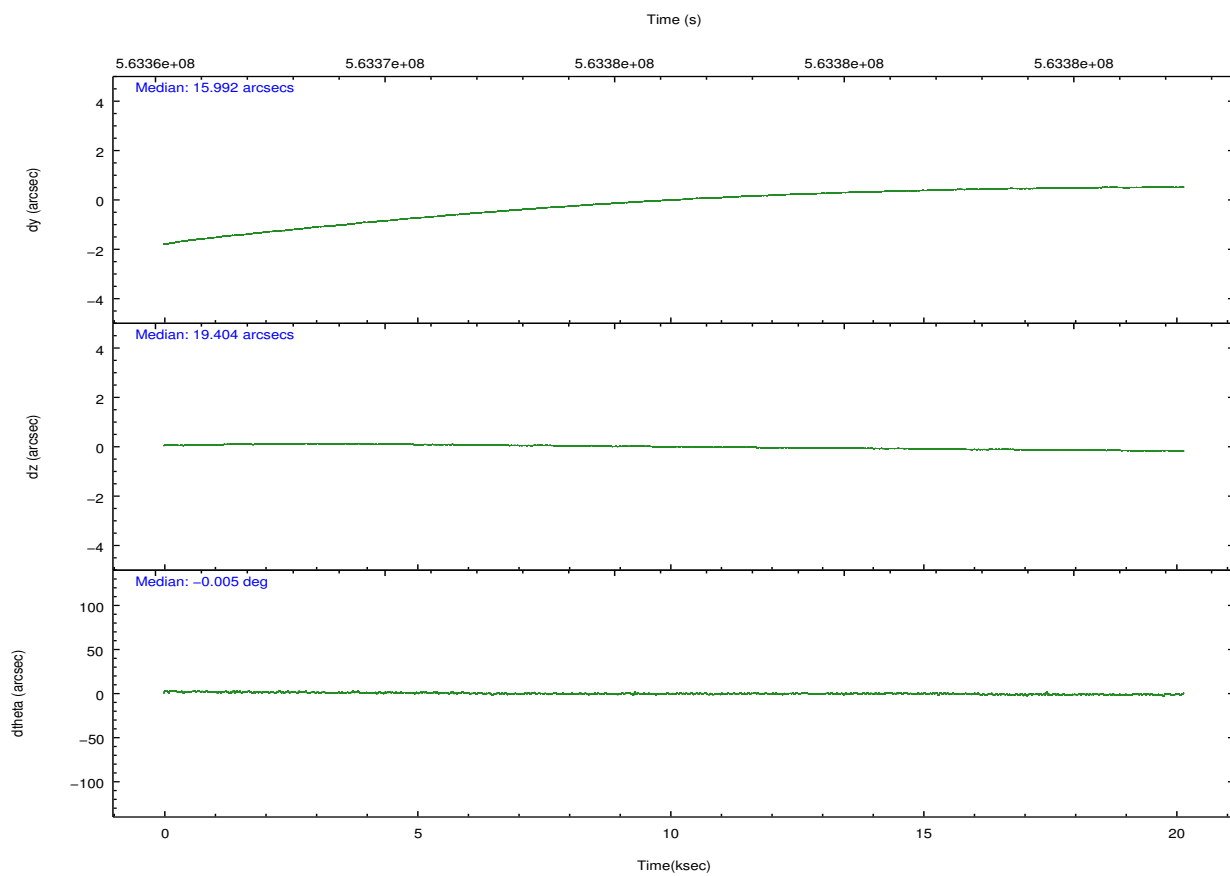
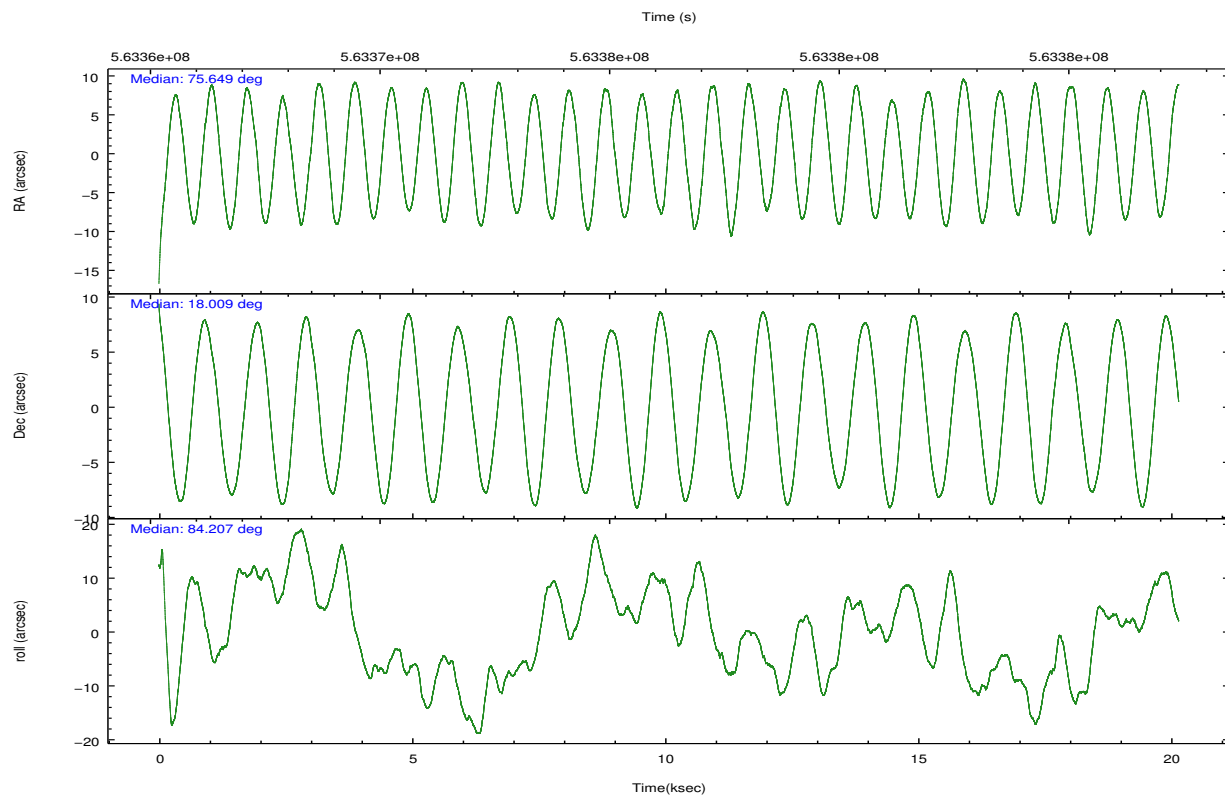
	ccd 0	ccd 1	ccd 2	ccd 3	ccd 6	ccd 7		ccd 0	ccd 1	ccd 2	ccd 3	ccd 6	ccd 7
level 1 events	93584	95048	105151	103106	110008	138510	grade 0 events	4007	5069	4066	3870	4045	5106
rejected events	81771	81571	93548	91870	97531	78685		4%	5%	3%	3%	3%	3%
rejected %	87%	85%	88%	89%	88%	56%	grade 1 events	55	62	60	50	60	193
								0%	0%	0%	0%	0%	0%
							grade 2 events	2975	3144	2915	2538	2800	12450
								3%	3%	2%	2%	2%	8%
							grade 3 events	1248	1225	1184	1199	1340	4972
								1%	1%	1%	1%	1%	3%
							grade 4 events	1169	1235	1177	1206	1245	4949
								1%	1%	1%	1%	1%	3%
							grade 5 events	4770	5042	4399	5362	5451	14293
								5%	5%	4%	5%	4%	10%
							grade 6 events	2414	2806	2264	2425	3048	32371
								2%	2%	2%	2%	2%	23%
							grade 7 events	76946	76465	89086	86456	92019	64176
								82%	80%	84%	83%	83%	46%

2.2 Compared Parameters

Parameter	Planned	Actual	Parameter	Planned	Actual
Instrument	ACIS	ACIS	Obspar format version number	7	7
Detector	ACIS-012367	ACIS-012367	Obspar file type	PREDICTED	ACTUAL
Grating	NONE	NONE	Obspar update status	NONE	UPDATED
Data mode	VFAINT	VFAINT	CCD I0 on	Y	Y
Observation mode	POINTING	POINTING	CCD I1 on	Y	Y
[deg] Pointing RA	75.660741	75.64874098914487	CCD I2 on	Y	Y
[deg] Pointing Dec	17.983382	18.00852503060224	CCD I3 on	Y	Y
[deg] Pointing Roll	83.997049	84.20943780330232	CCD S0 on	N	N
[mm] SIM focus pos	-0.782348	-0.7809083437167272	CCD S1 on	N	N
[mm] SIM defocus	0	0.001439871863259334	CCD S2 on	O2	Y
[mm] SIM translation stage pos	-233.592463	-233.5874344608287	CCD S3 on	O1	Y
[mm] SIM translation stage offset	0	-0.005018542100998502	CCD S4 on	N	N
[s] Observation start time (MET)	563366342.184000	563365087.24002	CCD S5 on	N	N
Observation start date	2015-11-08T10:37:54	2015-11-08T10:18:07	Number of optional ACIS chips dropped	0	0
[s] Observation end time (MET)	563386342.184000	563387313.34128	On-chip summing requested	N	N
Observation end date	2015-11-08T16:11:14	2015-11-08T16:28:33	Subarray requested	NONE	NONE
Read mode	TIMED	TIMED	Alternating exposures requested	N	N
			[s] Primary exposure time	0.000000	3.2

2.3 Aspect



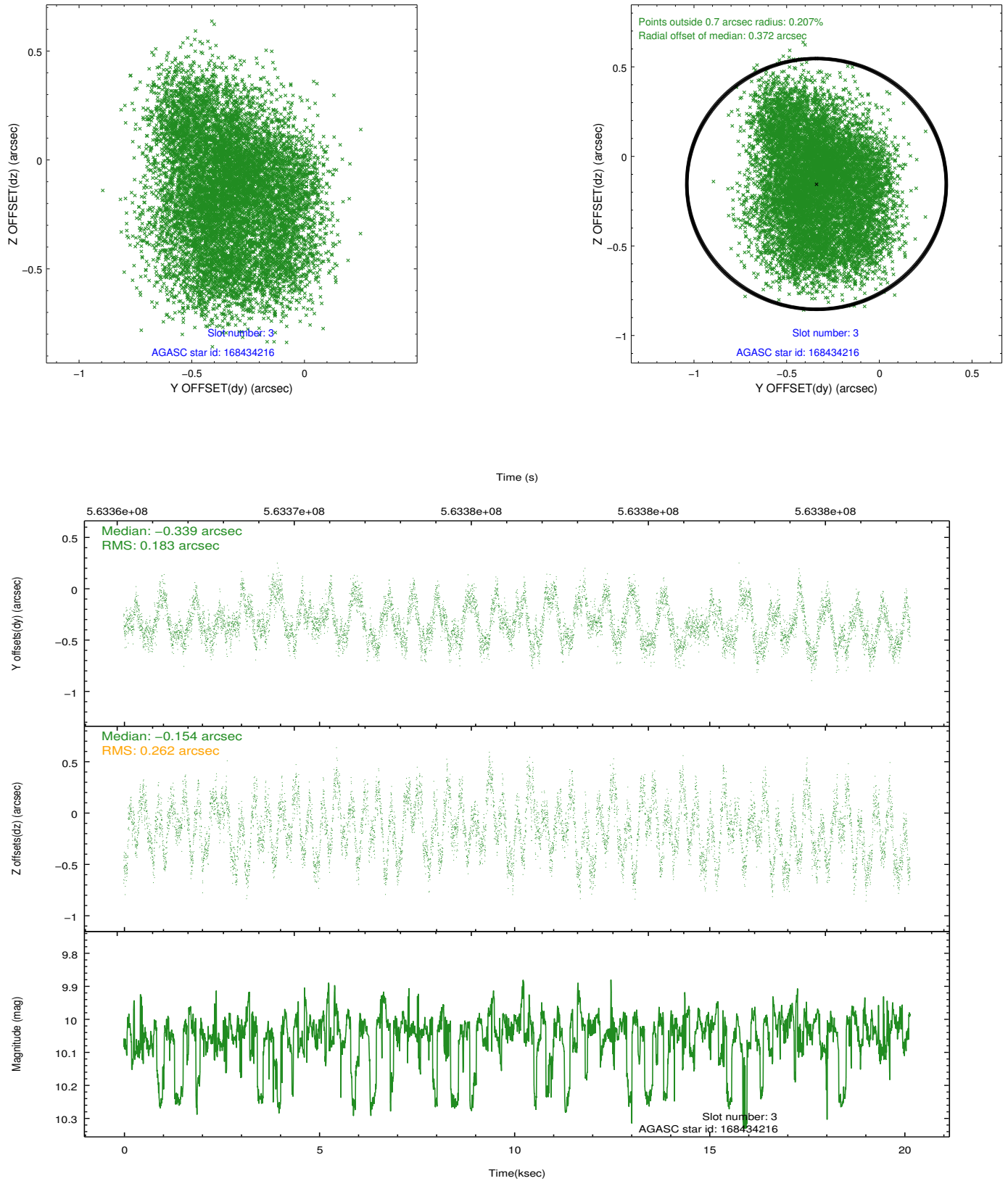


Slot Statistics

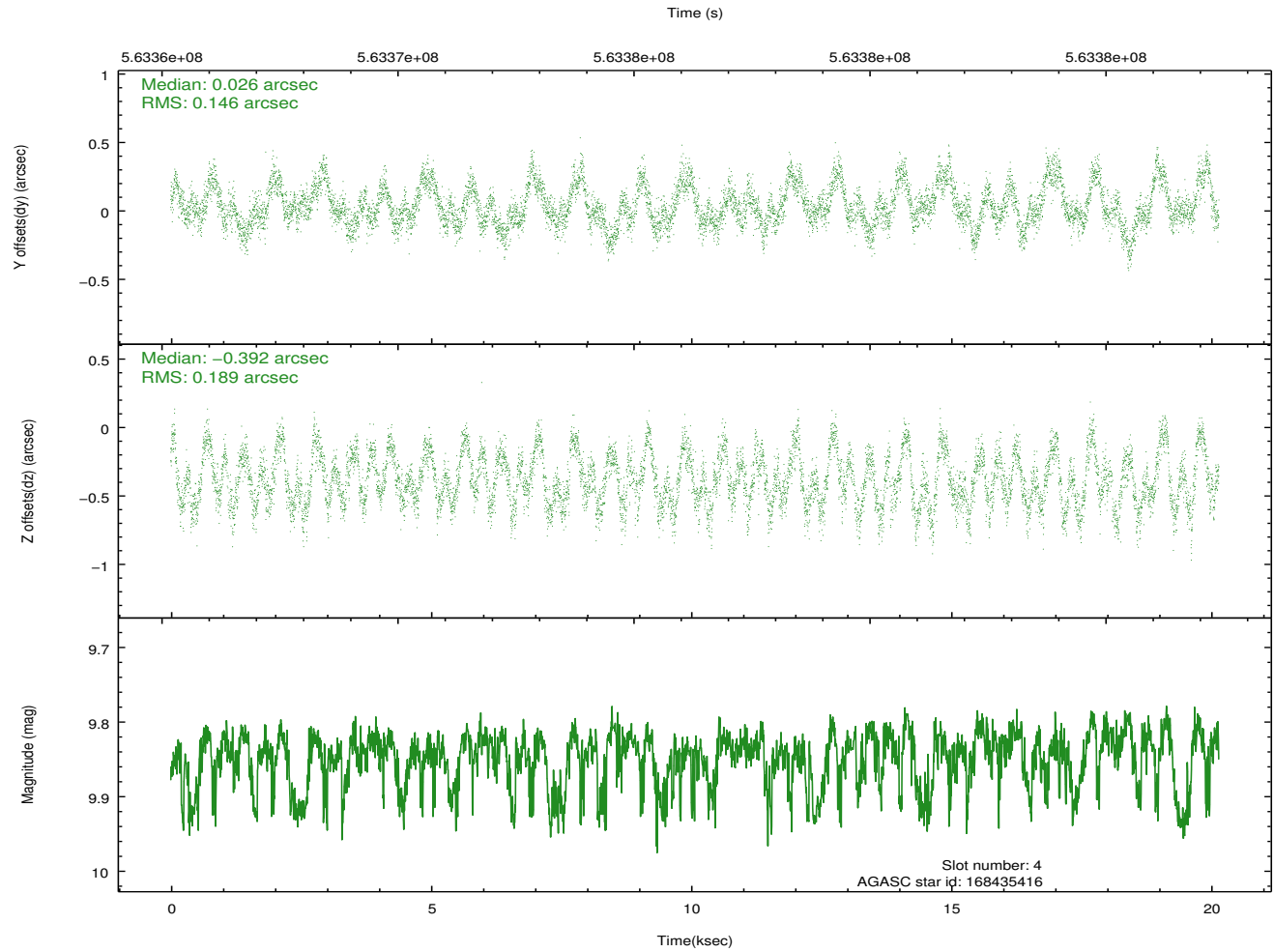
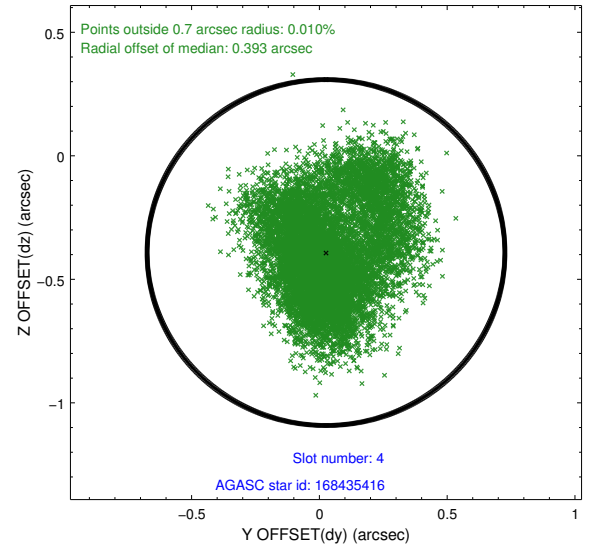
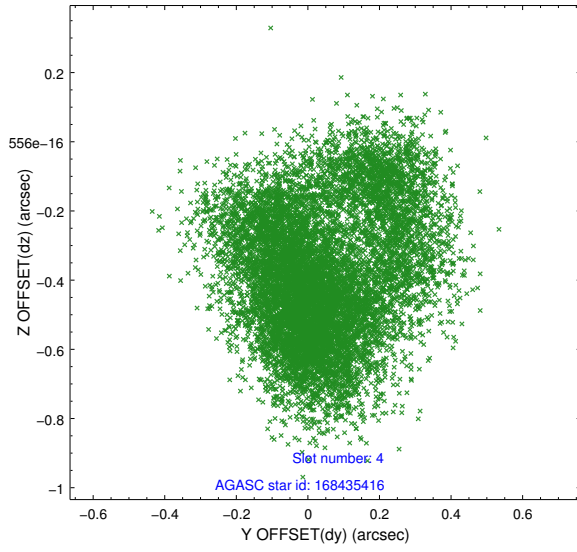
slot	status	used	id	mag	n_pts	med_dy	med_dz	dr1	dr2	ra	dec	mean_y	mean_z
0	FID		ACIS-I-1	7.25	4914	-0.035	-0.028	0.014	0.024	0.000000	0.000000	923.66	-843.10
1	FID		ACIS-I-4	7.19	4915	0.354	0.060	0.031	0.048	0.000000	0.000000	2144.11	1056.76
2	FID		ACIS-I-5	7.25	4916	-0.417	0.039	0.025	0.038	0.000000	0.000000	-1824.57	1054.61
3	GUIDE	used	168434216	10.05	9661	-0.339	-0.154	0.354	0.526	75.110677	18.330887	1049.85	2000.79
4	GUIDE	used	168435416	9.84	9730	0.026	-0.392	0.261	0.399	75.284243	17.803435	-777.90	1215.84
5	GUIDE	used	168435616	9.63	9823	0.245	-0.163	0.162	0.269	75.281177	17.434863	-2098.89	1090.35
6	GUIDE	used	168574328	10.06	9710	-0.001	0.365	0.355	0.534	76.141693	17.702961	-829.72	-1745.03
7	GUIDE	used	168575168	8.47	9825	0.113	0.352	0.125	0.194	76.004479	17.499600	-1607.60	-1355.38

2.4 Star Slots

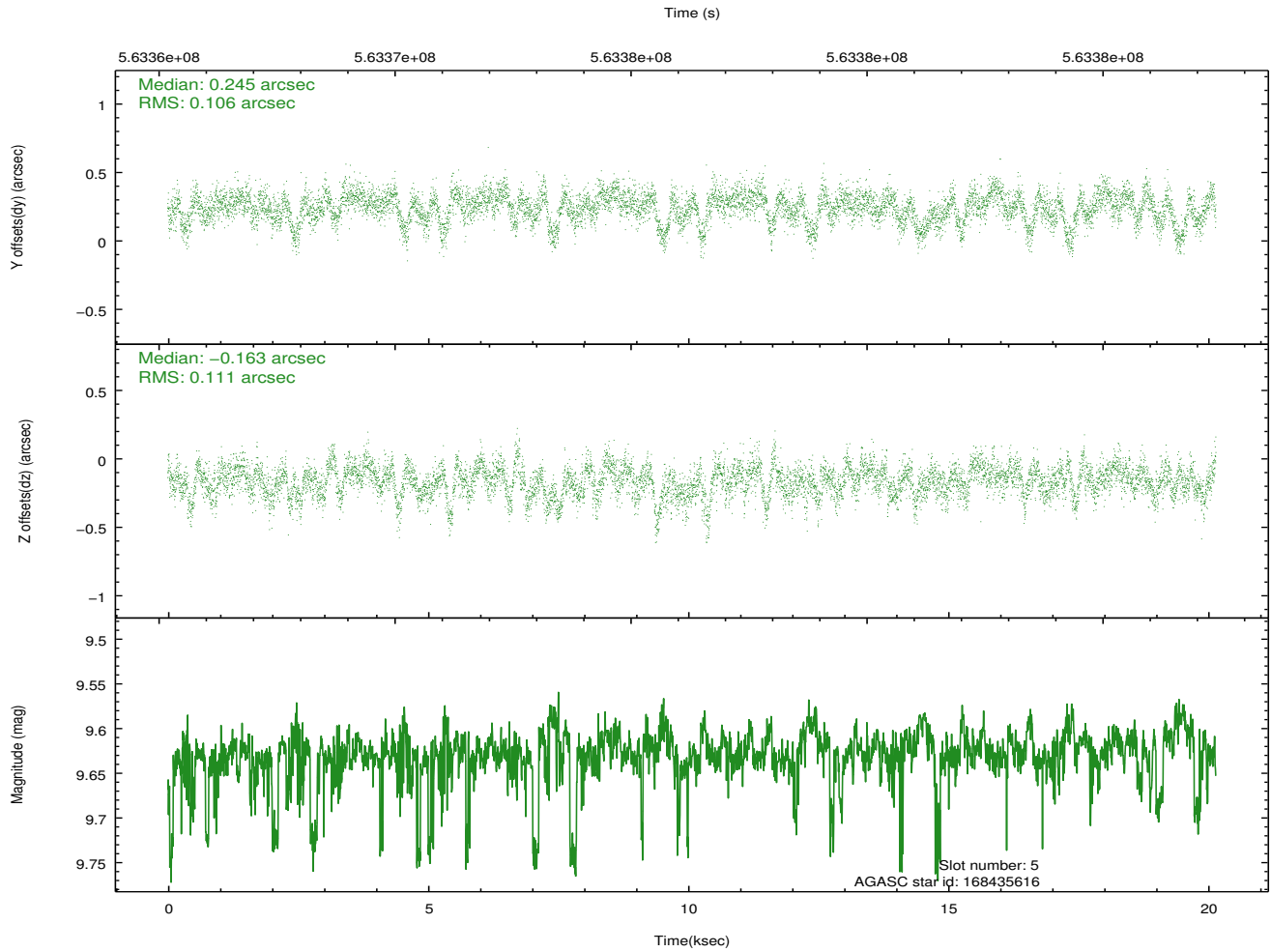
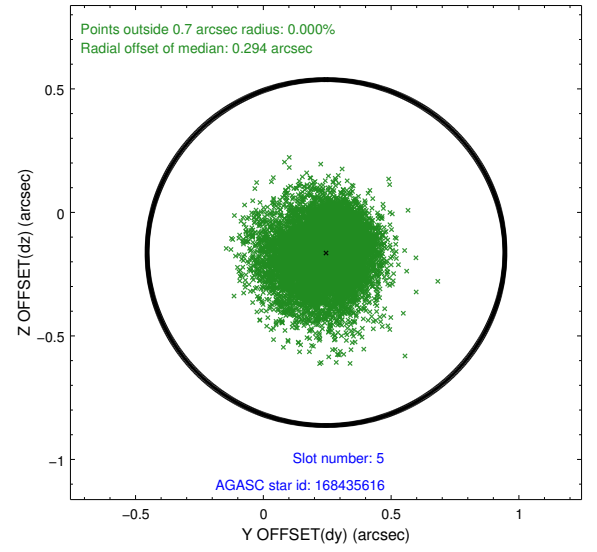
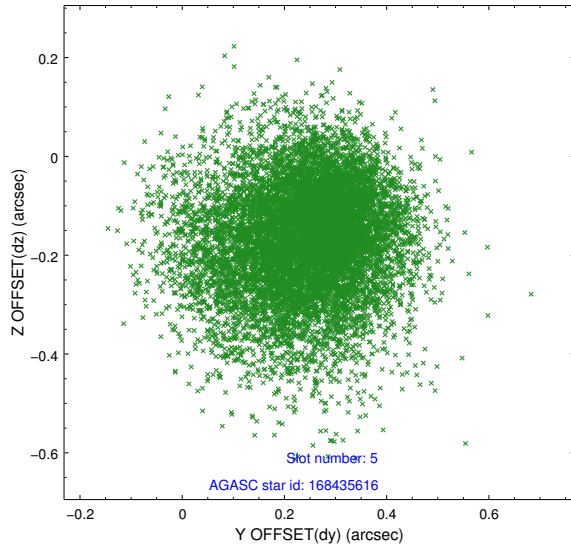
2.4.1 Slot 3



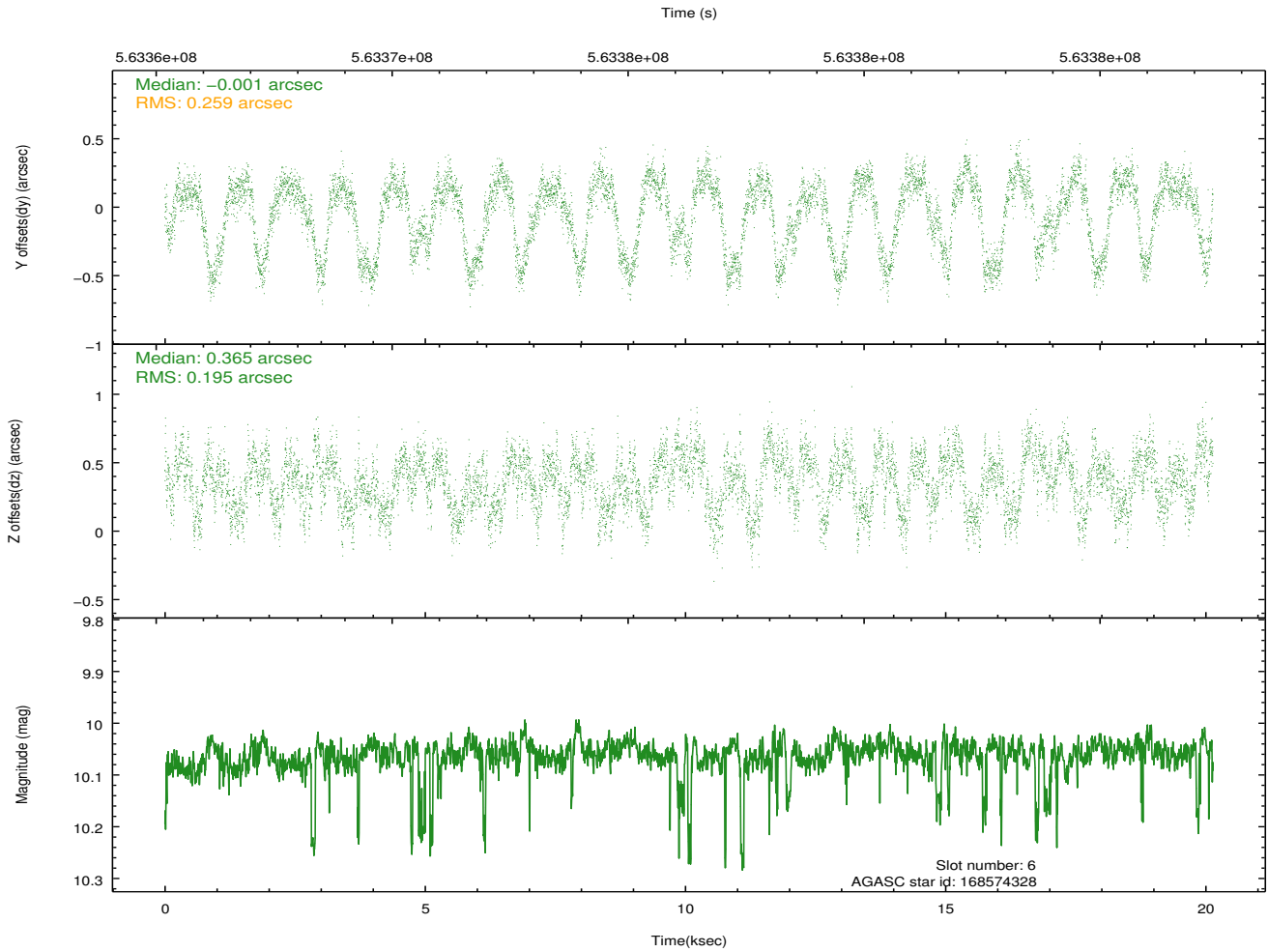
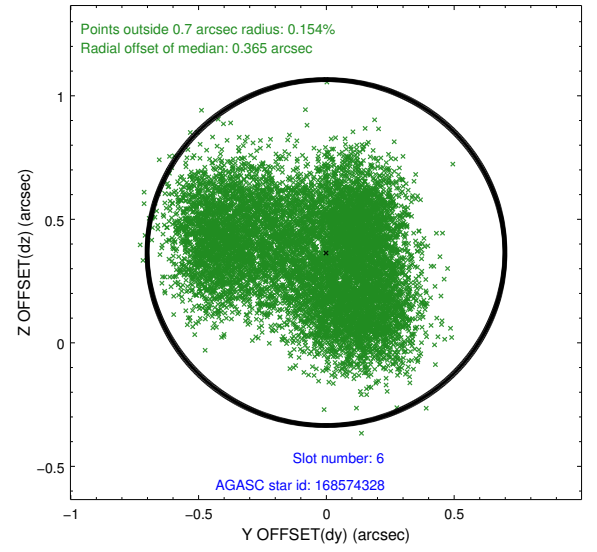
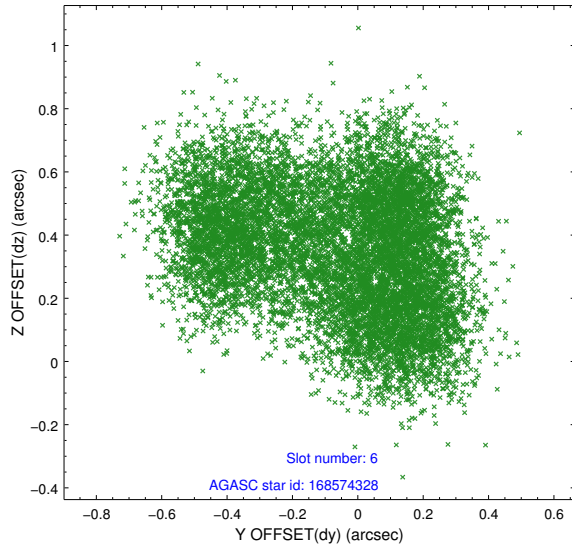
2.4.2 Slot 4



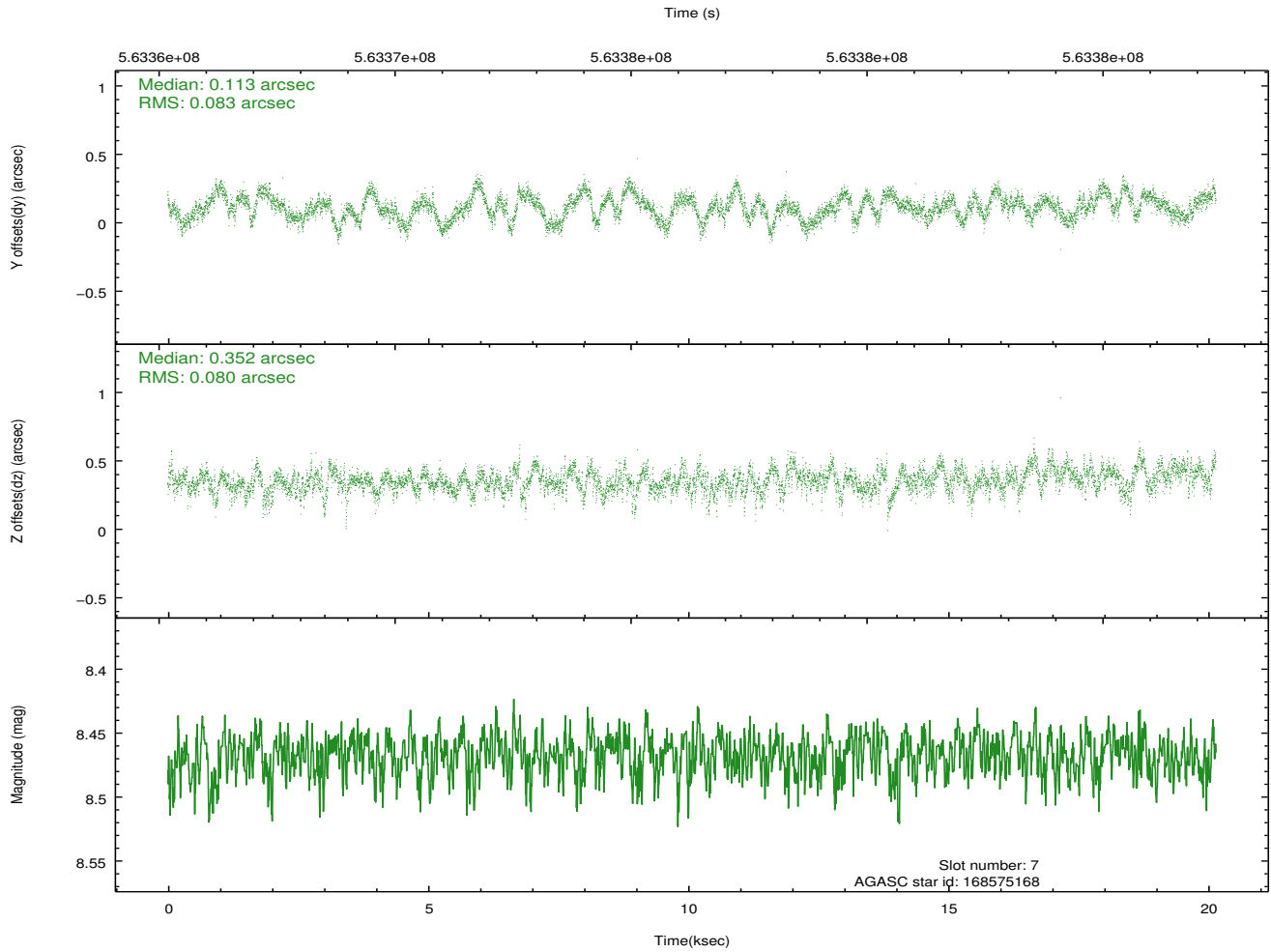
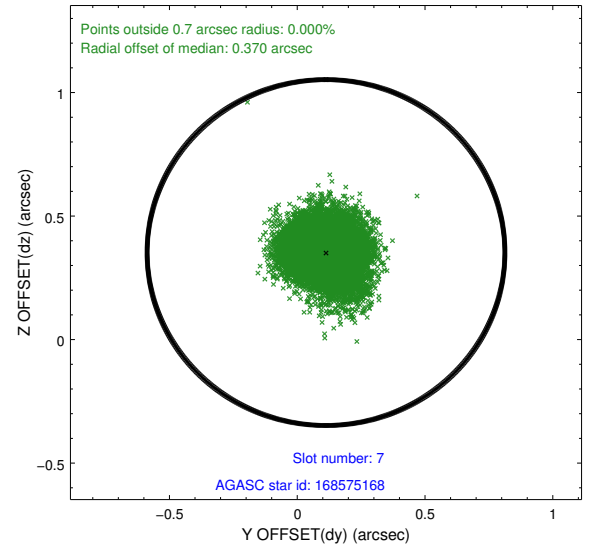
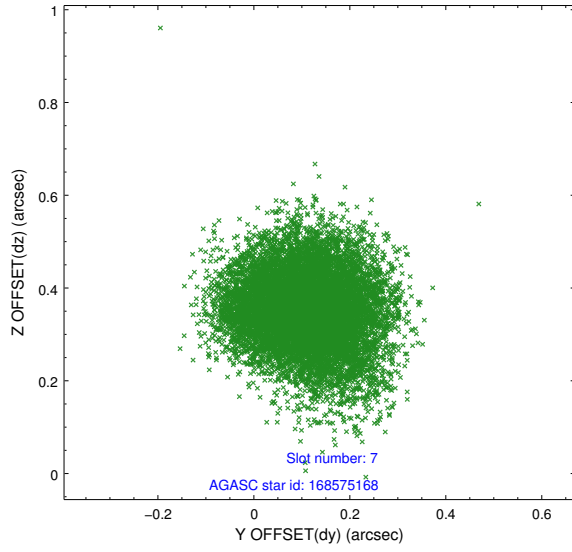
2.4.3 Slot 5



2.4.4 Slot 6

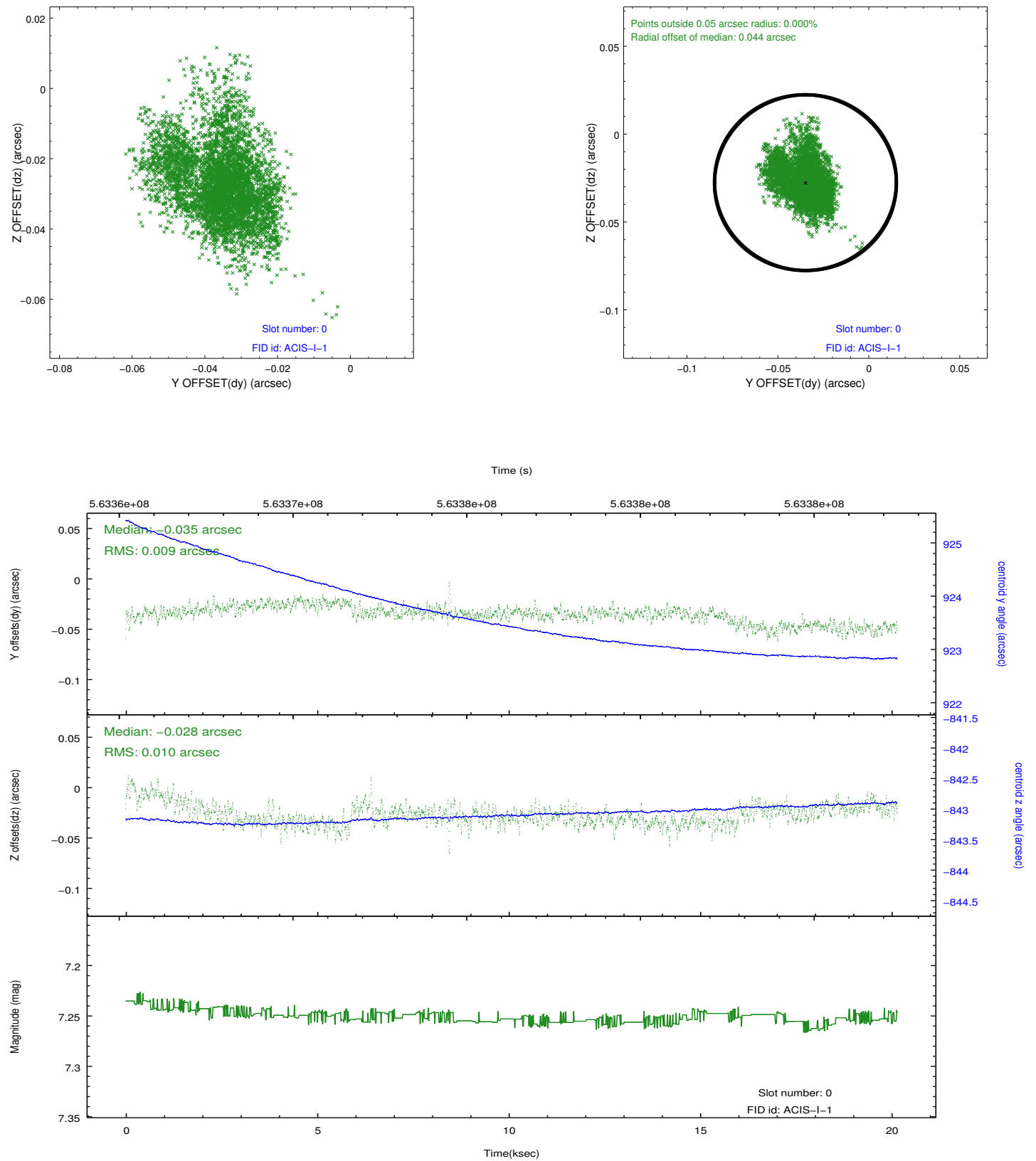


2.4.5 Slot 7

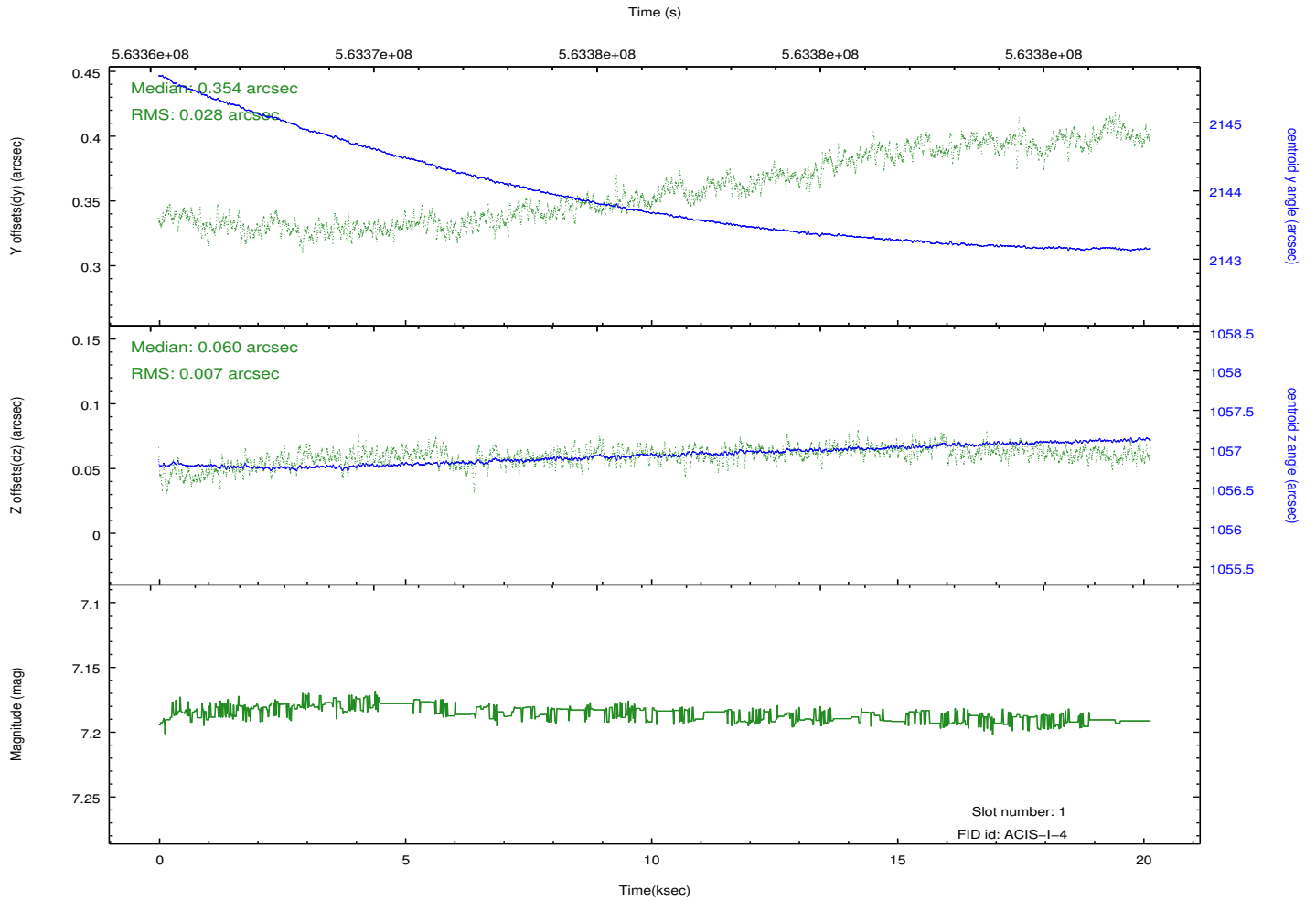
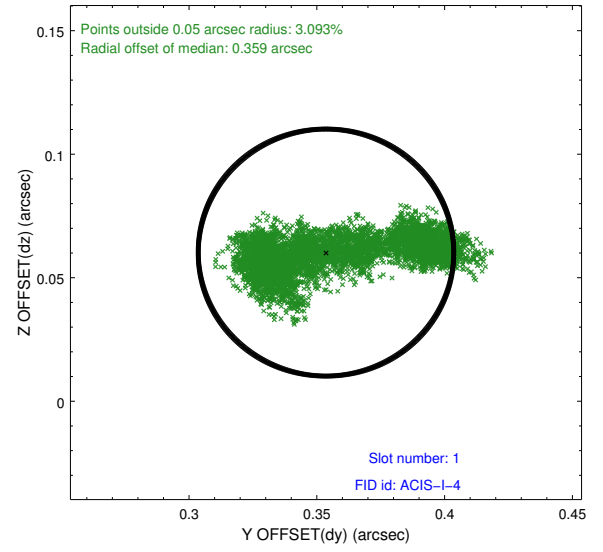
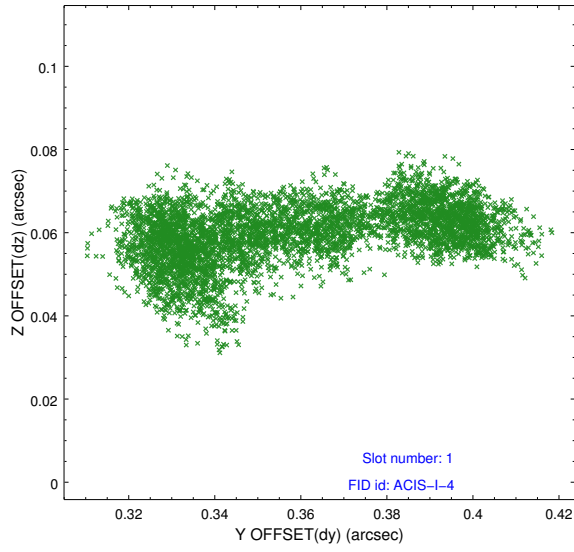


2.5 FID Slots

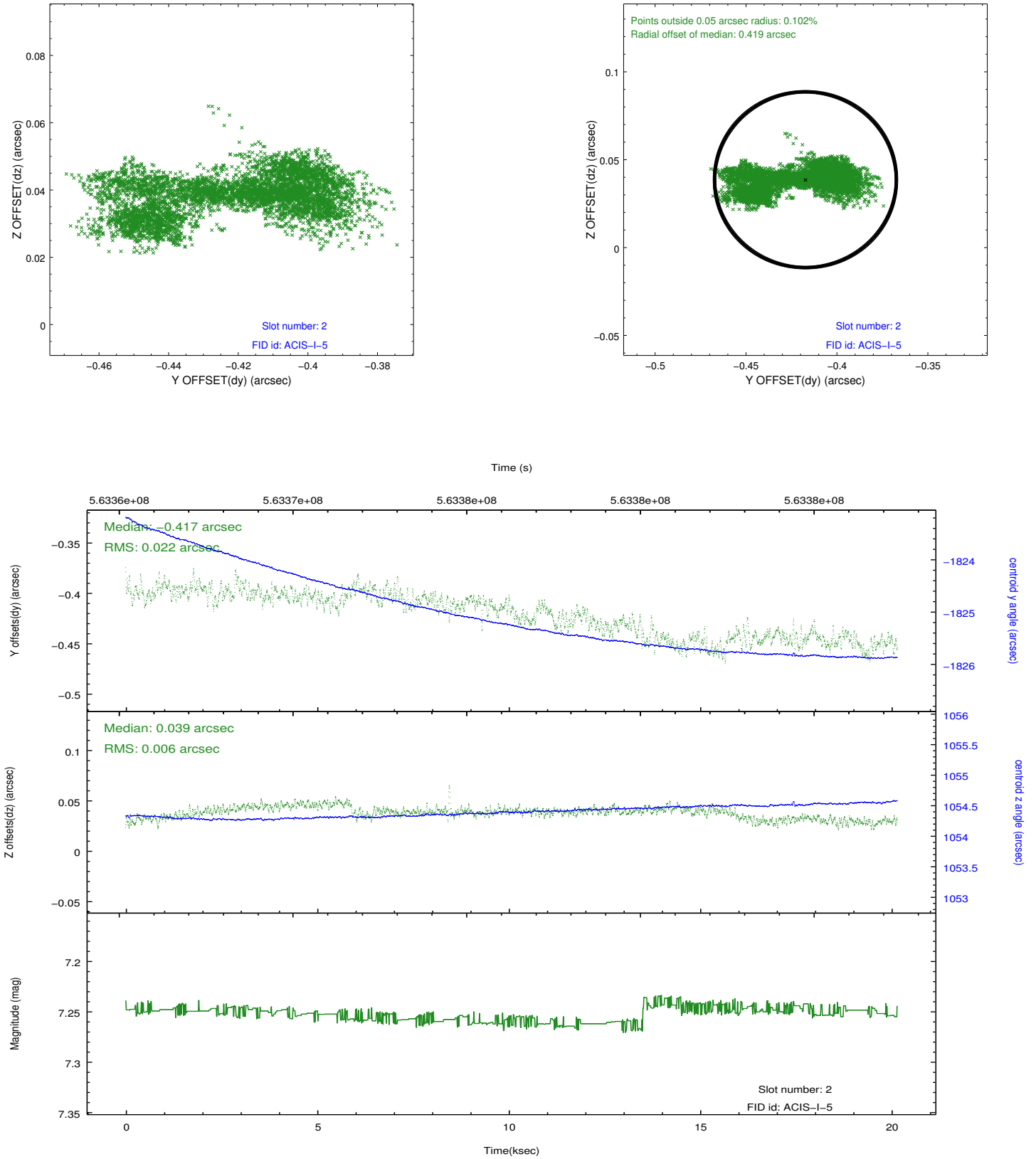
2.5.1 Slot 0



2.5.2 Slot 1



2.5.3 Slot 2



A Summary

A.1 Status

V&V Scientist	Beth Sundheim
V&V Date (YYYY-MM-DD)	2015.11.09
V&V Edition	1
V&V Disposition and Status	OK
V&V Charge Time	19.945600297213

A.2 Comments