

V&V Reference Report

L2 ASCDS Version : 10.5

Observation 17849 - L2 Version 1
Chandra X-Ray Center

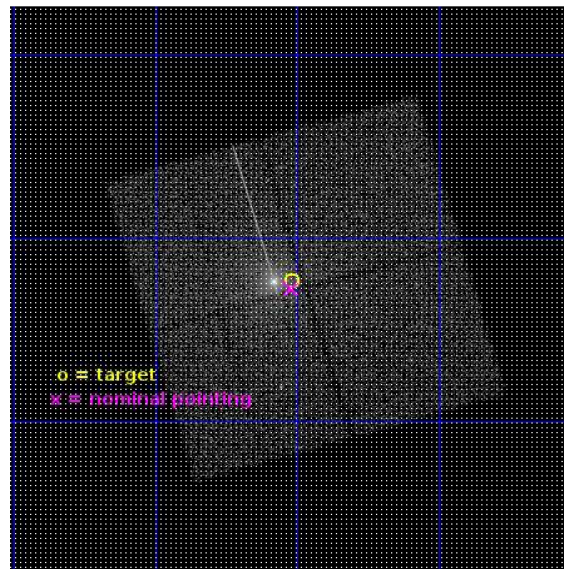
L2 Processing Date : Aug 7 2016

Contents

1	Front	2
2	OBI	3
2.1	OBI	3
2.1.1	Images	3
2.1.2	Bias	3
2.1.3	Parameters	4
2.1.4	Events	4
2.2	Compared Parameters	5
2.3	Aspect	6
2.4	Star Slots	9
2.4.1	Slot 3	9
2.4.2	Slot 4	10
2.4.3	Slot 5	11
2.4.4	Slot 6	12
2.4.5	Slot 7	13
2.5	FID Slots	14
2.5.1	Slot 0	14
2.5.2	Slot 1	15
2.5.3	Slot 2	16
A	Summary	17
A.1	Status	17
A.2	Comments	17

1 Front

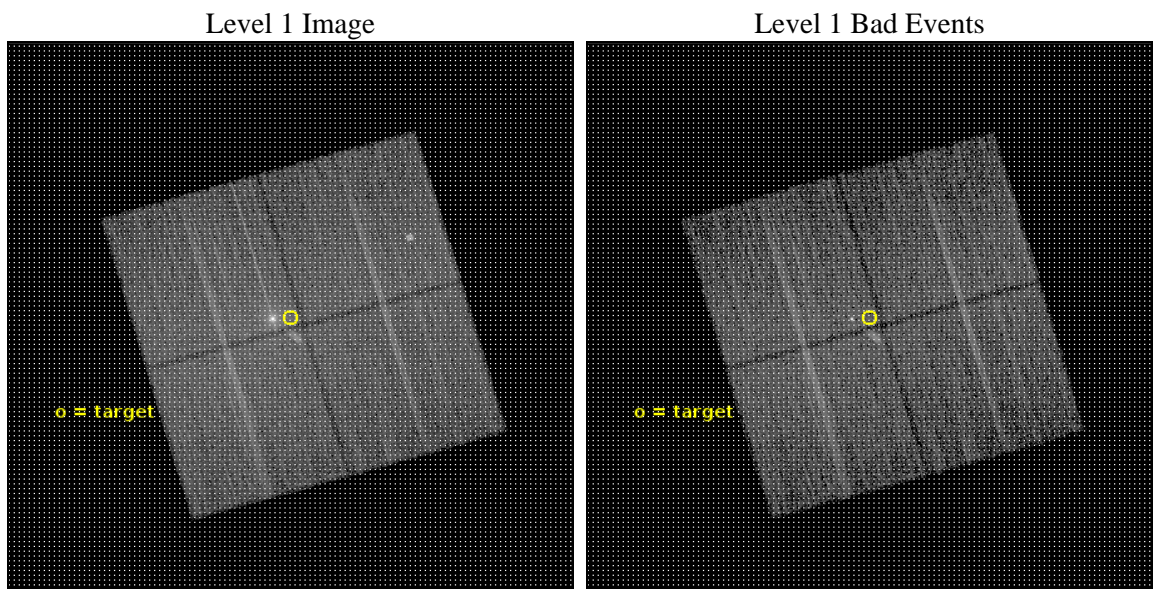
seq_num	401781	Sequence number
obs_id	17849	Observation id
title	The Black Hole Population in Galactic Globular Clusters	Proposal t
observer	Prof Laura Chomiuk	Principal investigator
object	NGC 6712	Source name
dtcycle	0	
cycle	P	events from which exps? Prim/Second/Both
ra_targ	283.254167	Observer's specified target RA [deg]
dec_targ	-8.705556	Observer's specified target Dec [deg]
ra_nom	283.25485302814	Nominal RA [deg]
dec_nom	-8.7122947927934	Nominal Dec [deg]
roll_nom	253.68789807315	Nominal Roll [deg]
revision	1	Processing version of data
ontime	19074.300146818	Sum of GTIs [s]
livetime	18825.080373105	Livetime [s]
ontime0	19074.300146818	Sum of GTIs [s]
ontime1	19071.159066439	Sum of GTIs [s]
ontime2	19071.159076452	Sum of GTIs [s]
ontime3	19074.300146818	Sum of GTIs [s]
l2events	78207	Number of level 2 events



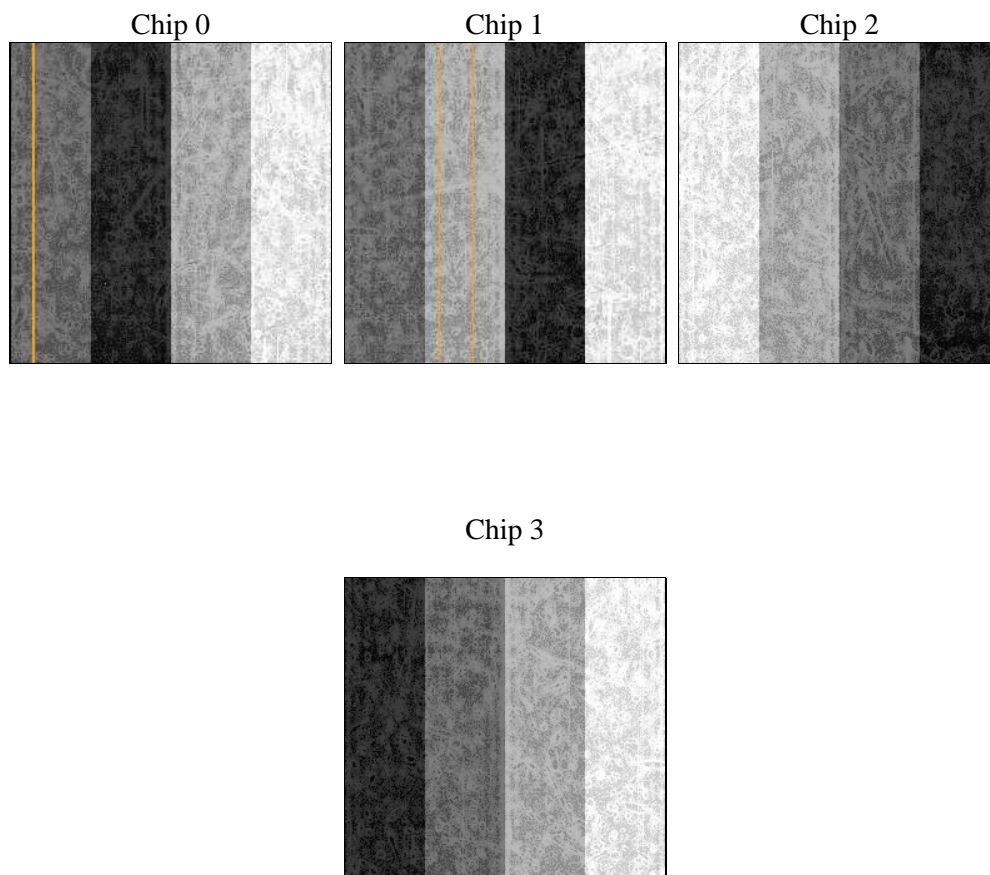
2 OBI

2.1 OBI

2.1.1 Images



2.1.2 Bias



2.1.3 Parameters

obi_num	0	Obi number	sched_exp_time	19000.000000	[s] Scheduled observation exposure time
ascdsver	10.5	Processing system revision	ontime	19074.300146818	Sum of GTIs [s]
caldsver	4.7.2	 	ontime0	19074.300146818	Sum of GTIs [s]
date	2016-08-07T18:59:23	Date and time of file creation	ontime1	19071.159066439	Sum of GTIs [s]
revision	1	Processing version of data	ontime2	19071.159076452	Sum of GTIs [s]
			ontime3	19074.300146818	Sum of GTIs [s]
			l1events	523972	Number of level 1 events

2.1.4 Events

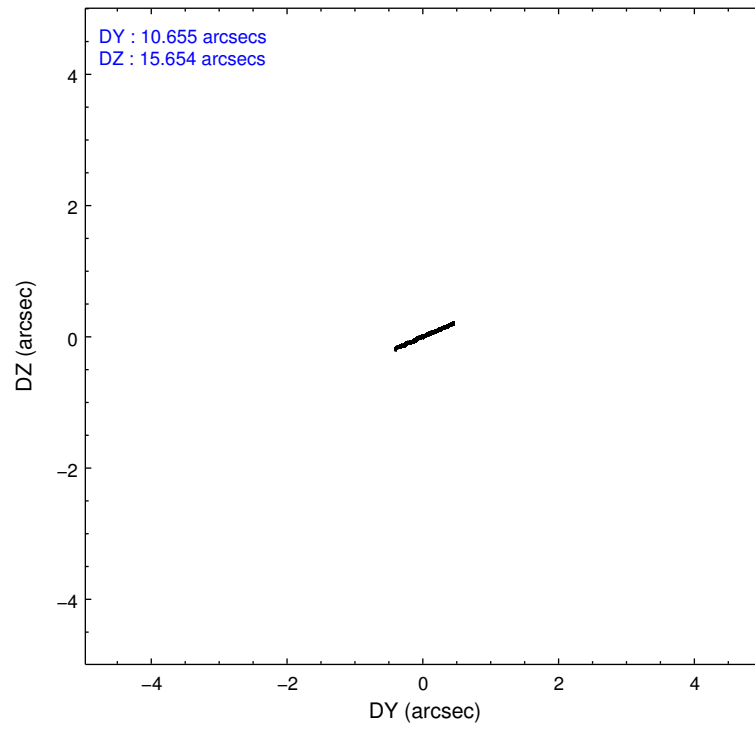
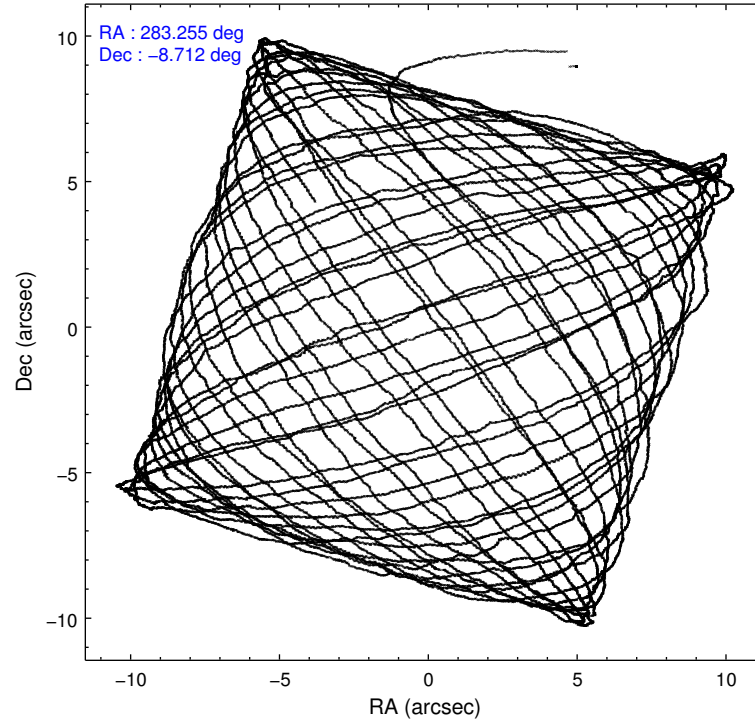
	ccd 0	ccd 1	ccd 2	ccd 3
level 1 events	115272	121732	133427	153541
rejected events	100069	101922	116343	115220
rejected %	86%	83%	87%	75%

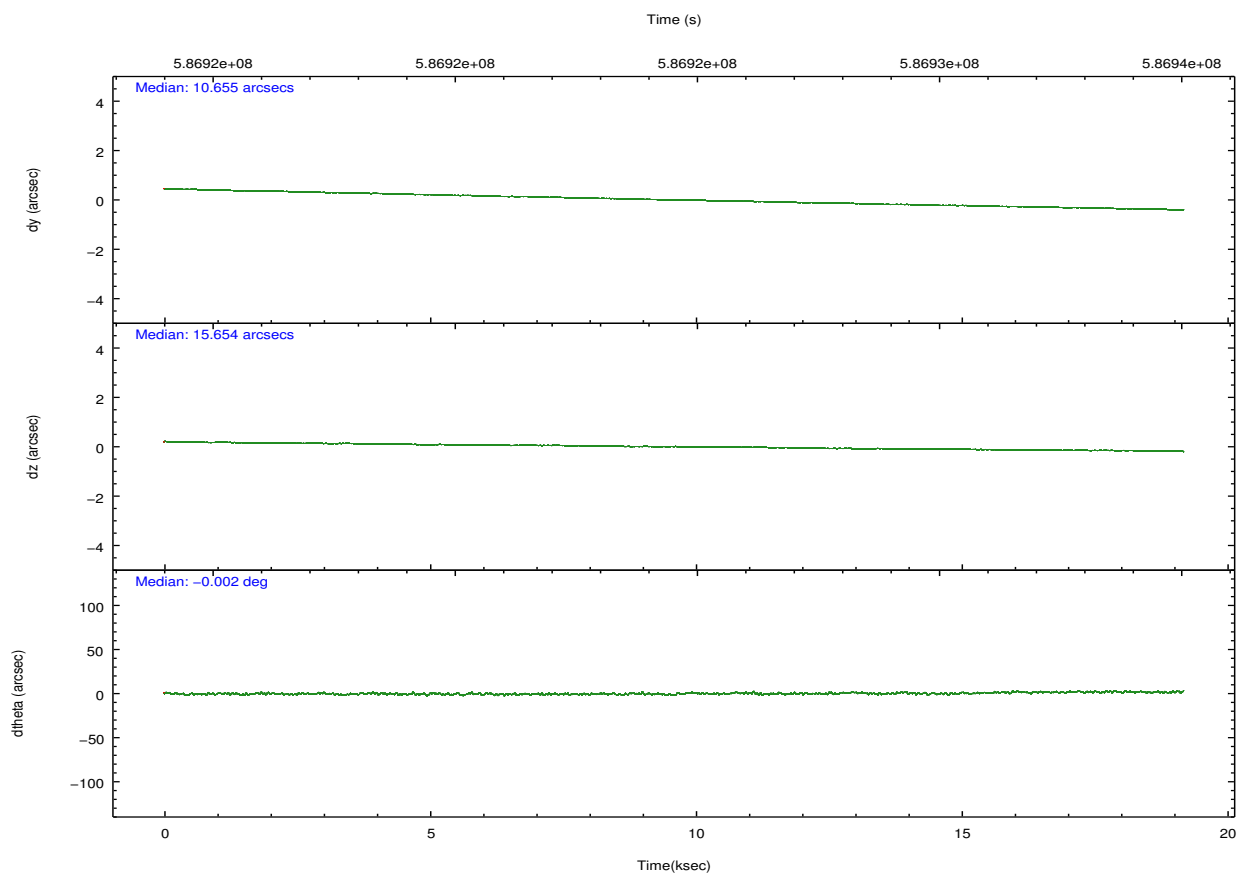
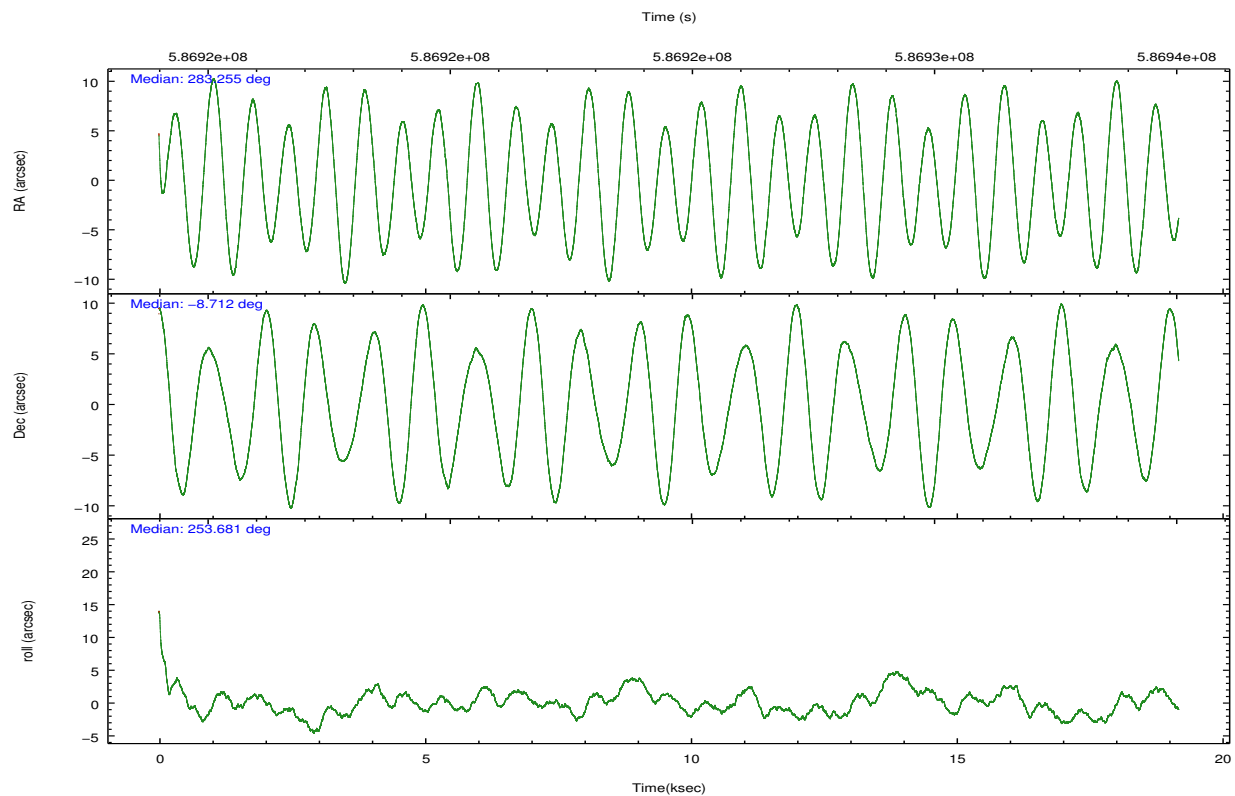
	ccd 0	ccd 1	ccd 2	ccd 3
grade 0 events	5921	9355	7923	23832
	5%	7%	5%	15%
grade 1 events	67	74	400	1038
	0%	0%	0%	0%
grade 2 events	3593	3807	3571	5969
	3%	3%	2%	3%
grade 3 events	1413	1536	1447	2338
	1%	1%	1%	1%
grade 4 events	1310	1408	1473	2248
	1%	1%	1%	1%
grade 5 events	5077	5226	4762	6811
	4%	4%	3%	4%
grade 6 events	2968	3707	2672	3941
	2%	3%	2%	2%
grade 7 events	94923	96619	111179	107364
	82%	79%	83%	69%

2.2 Compared Parameters

Parameter	Planned	Actual	Parameter	Planned	Actual
Instrument	ACIS	ACIS	Obspar format version number	7	7
Detector	ACIS-0123	ACIS-0123	Obspar file type	PREDICTED	ACTUAL
Grating	NONE	NONE	Obspar update status	NONE	UPDATED
Data mode	FAINT	FAINT	Number of optional ACIS chips dropped	0	0
Observation mode	POINTING	POINTING	On-chip summing requested	N	N
[deg] Pointing RA	283.248139	283.2548530281431	Subarray requested	NONE	NONE
[deg] Pointing Dec	-8.685520	-8.71229479279342	Alternating exposures requested	N	N
[deg] Pointing Roll	253.478190	253.6878980731481	[s] Primary exposure time	0.000000	3.1
[mm] SIM focus pos	-0.782348	-0.7809083437167272			
[mm] SIM defocus	0	0.001439871863259334			
[mm] SIM translation stage pos	-233.592463	-233.5874344608287			
[mm] SIM translation stage offset	0	-0.005018542100998502			
[s] Observation start time (MET)	586915109.184000	586913899.76862			
Observation start date	2016-08-06T23:57:21	2016-08-06T23:38:19			
[s] Observation end time (MET)	586934109.184000	586935094.71984			
Observation end date	2016-08-07T05:14:01	2016-08-07T05:31:34			
Read mode	TIMED	TIMED			

2.3 Aspect



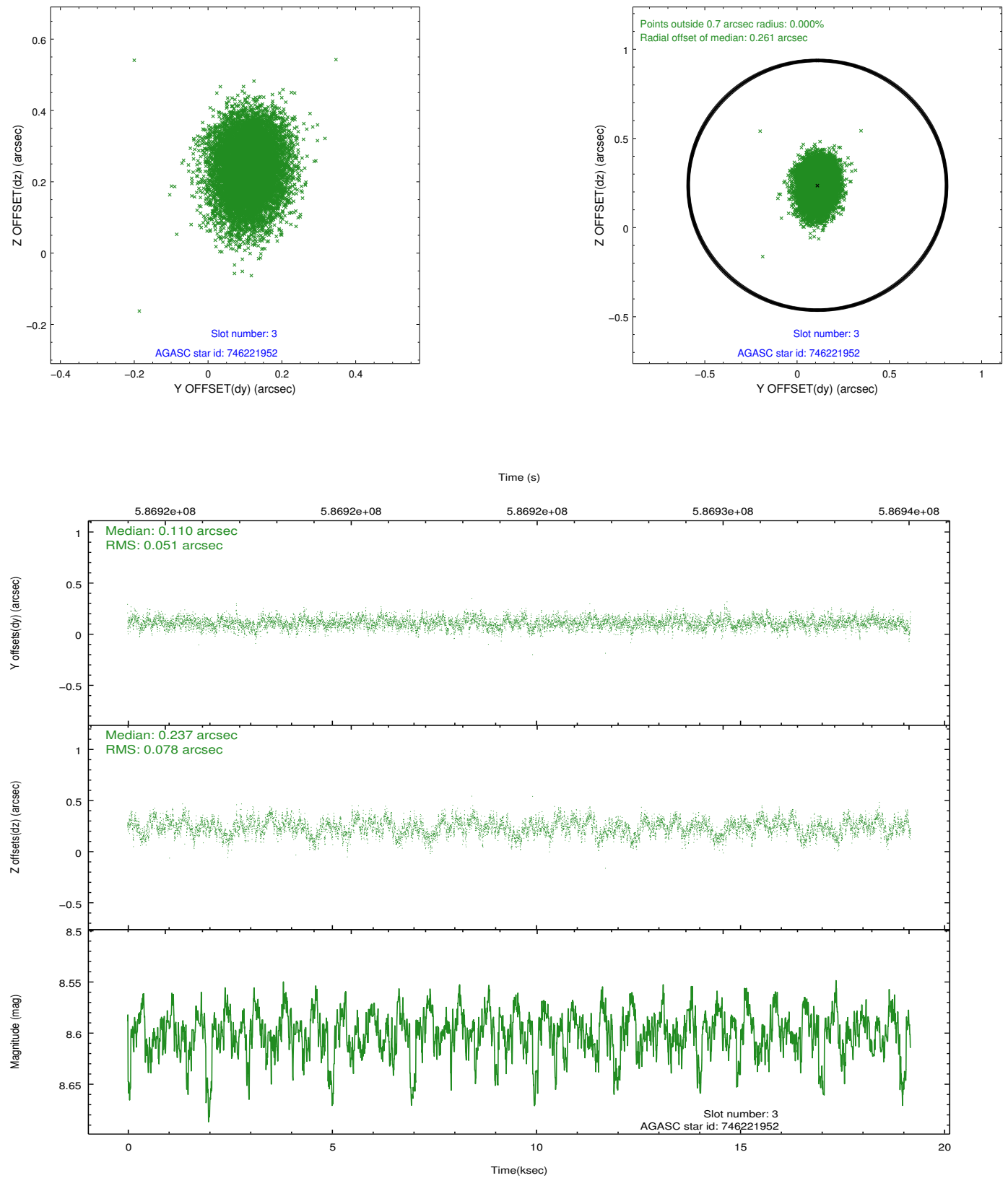


Slot Statistics

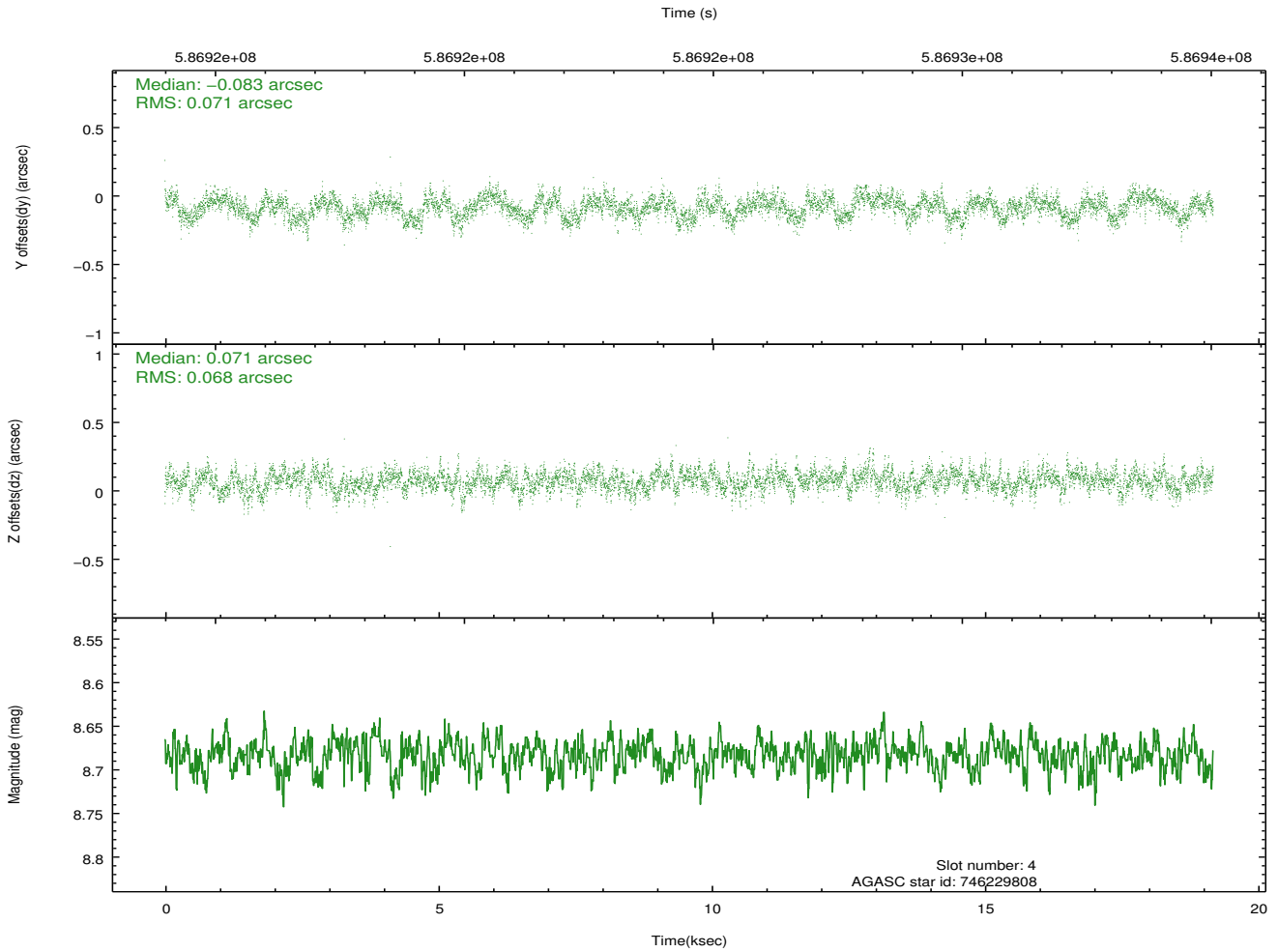
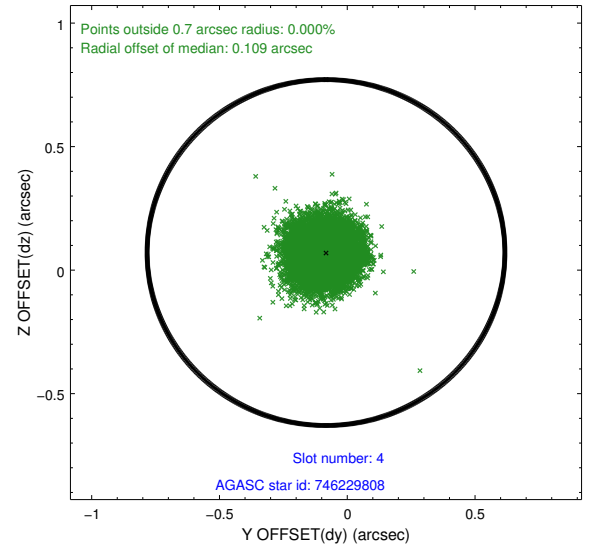
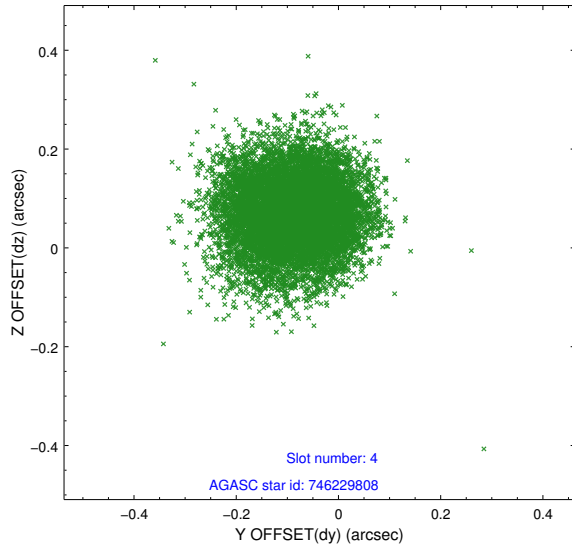
slot	status	used	id	mag	n_pts	med_dy	med_dz	dr1	dr2	ra	dec	mean_y	mean_z
0	FID		ACIS-I-1	7.28	4680	-0.089	-0.120	0.011	0.022	0.000000	0.000000	928.82	-839.40
1	FID		ACIS-I-4	7.19	4678	0.097	0.104	0.014	0.023	0.000000	0.000000	2149.18	1060.51
2	FID		ACIS-I-6	7.26	4680	-0.105	0.083	0.010	0.017	0.000000	0.000000	394.99	1702.92
3	GUIDE	used	746221952	8.60	9353	0.110	0.237	0.099	0.161	283.010159	-8.460584	-533.91	-1042.57
4	GUIDE	used	746229808	8.68	9356	-0.083	0.071	0.105	0.167	283.082763	-8.774229	474.05	-472.80
5	GUIDE	used	746235352	7.93	9357	0.123	0.196	0.108	0.169	283.027477	-9.082655	1594.59	-345.08
6	GUIDE	used	747897648	7.19	9358	0.005	-0.224	0.140	0.205	283.483122	-9.370309	2126.79	1501.40
7	GUIDE	used	747906432	8.89	9349	-0.154	-0.276	0.100	0.161	283.747182	-8.998932	578.47	2022.34

2.4 Star Slots

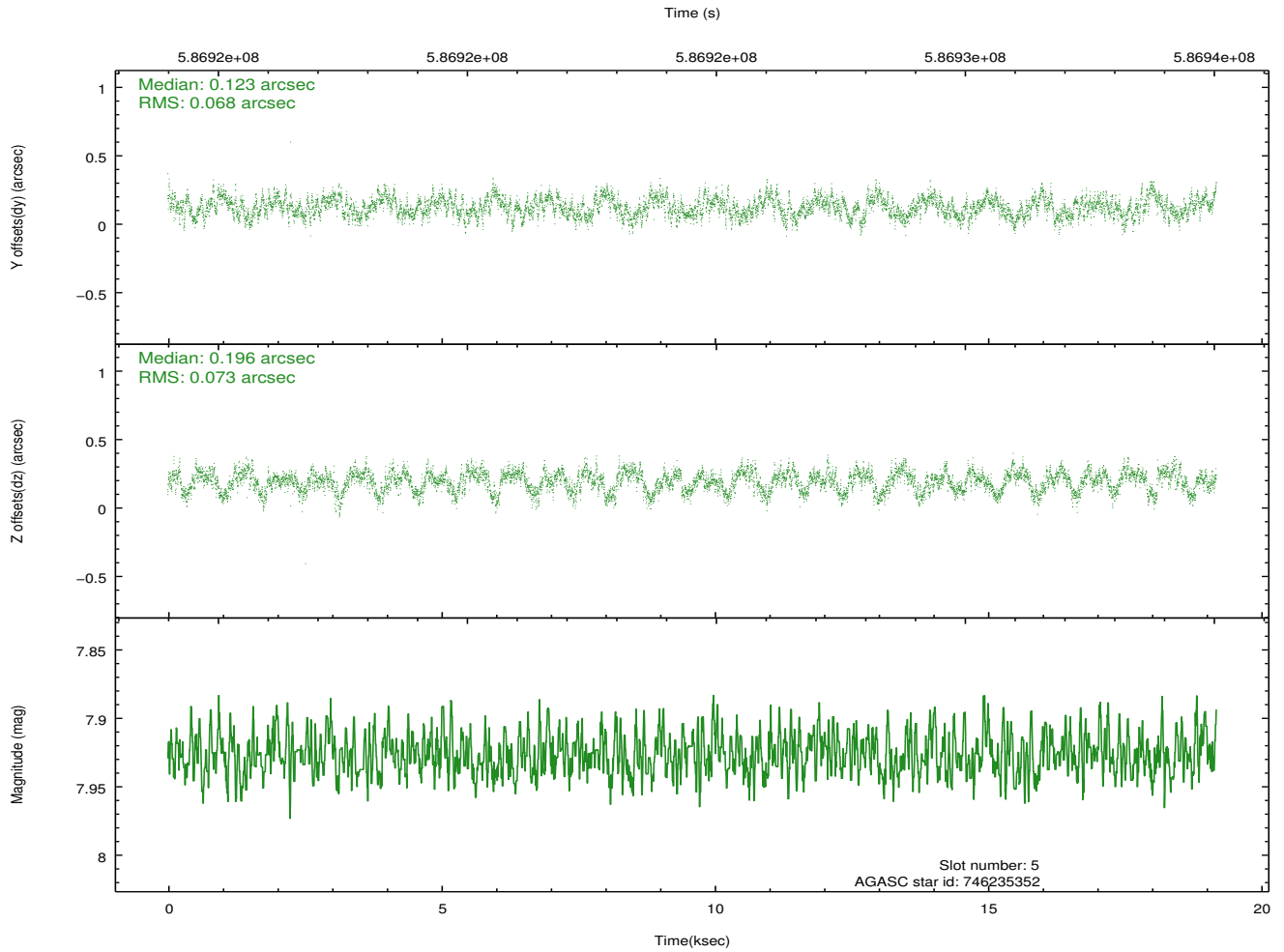
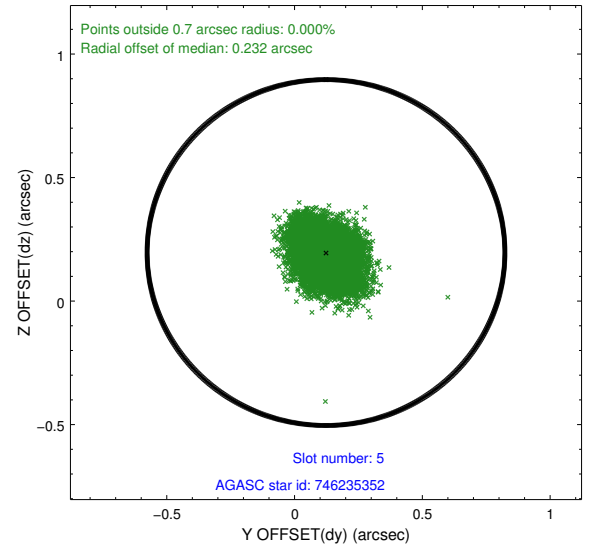
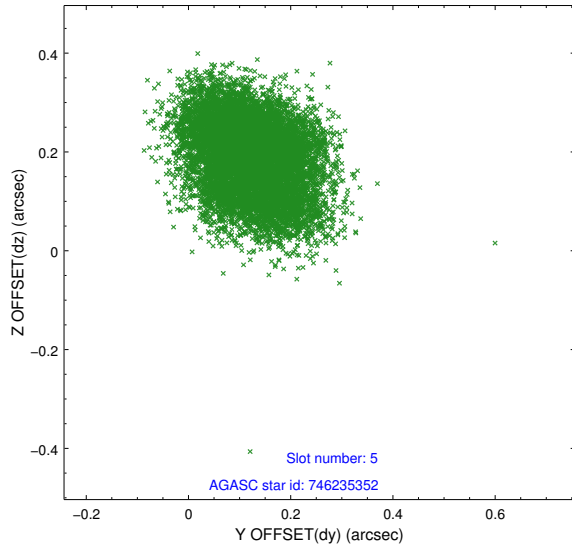
2.4.1 Slot 3



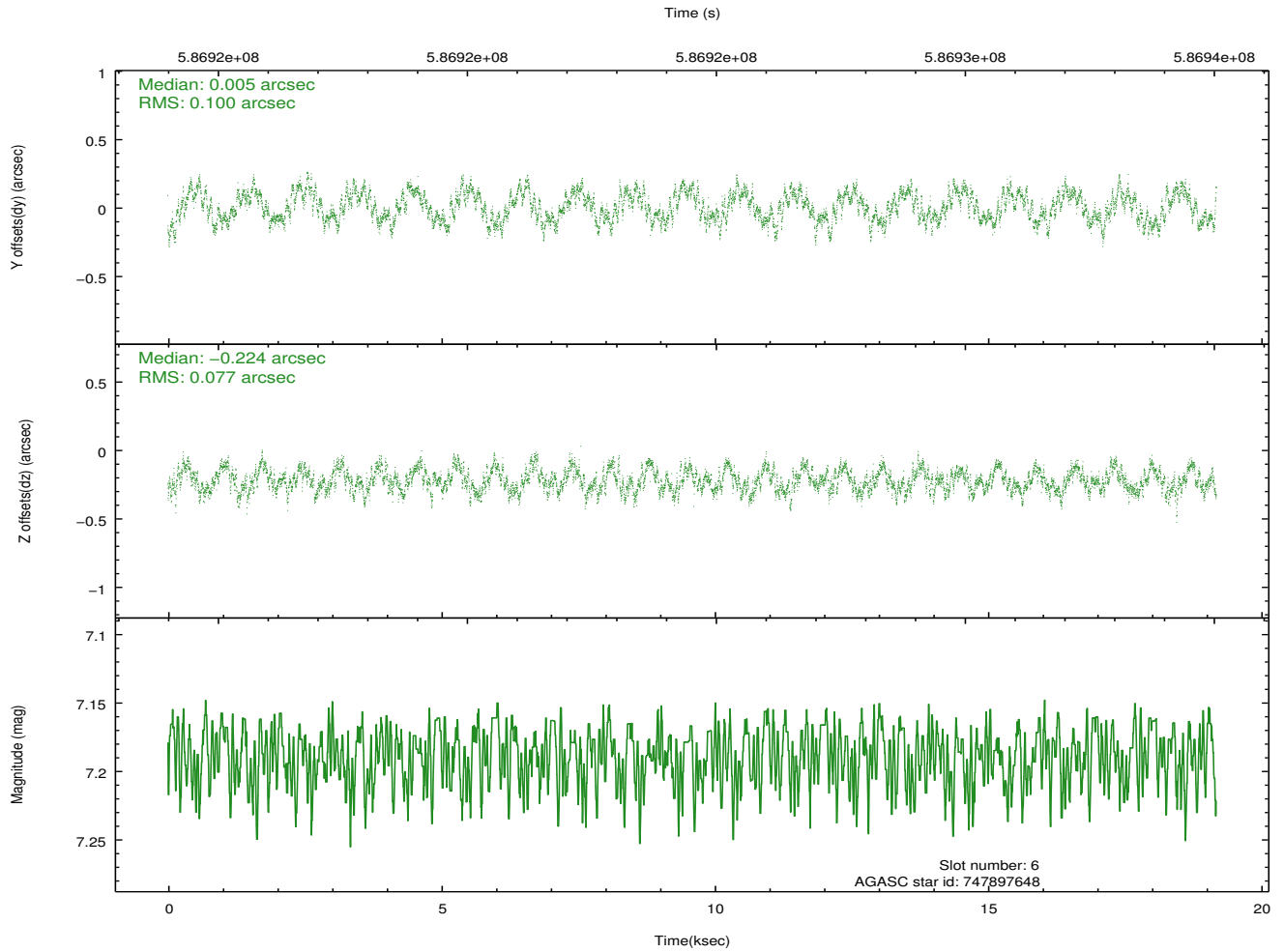
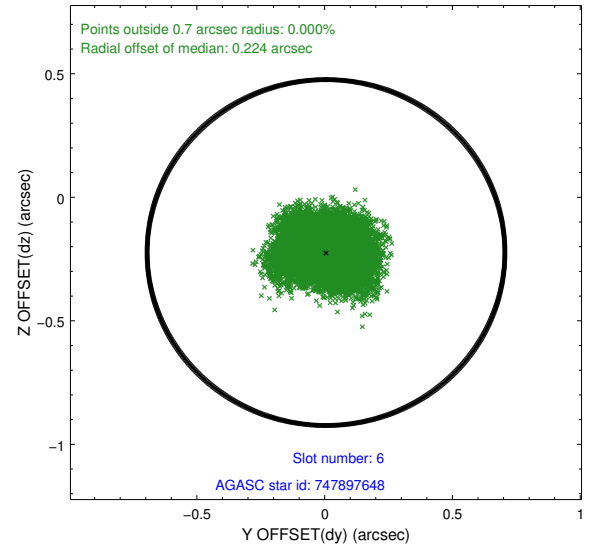
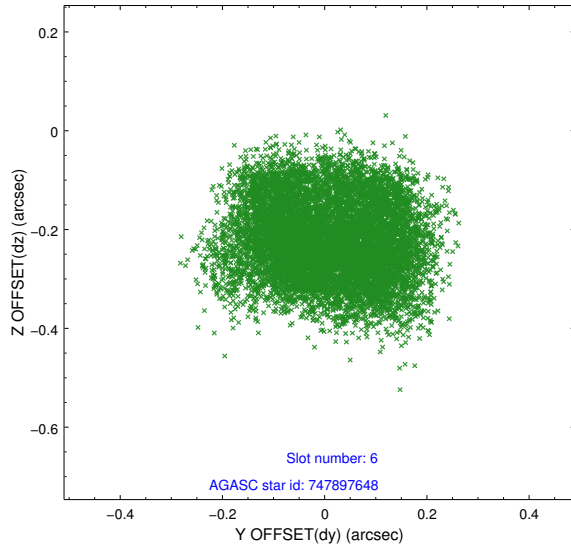
2.4.2 Slot 4



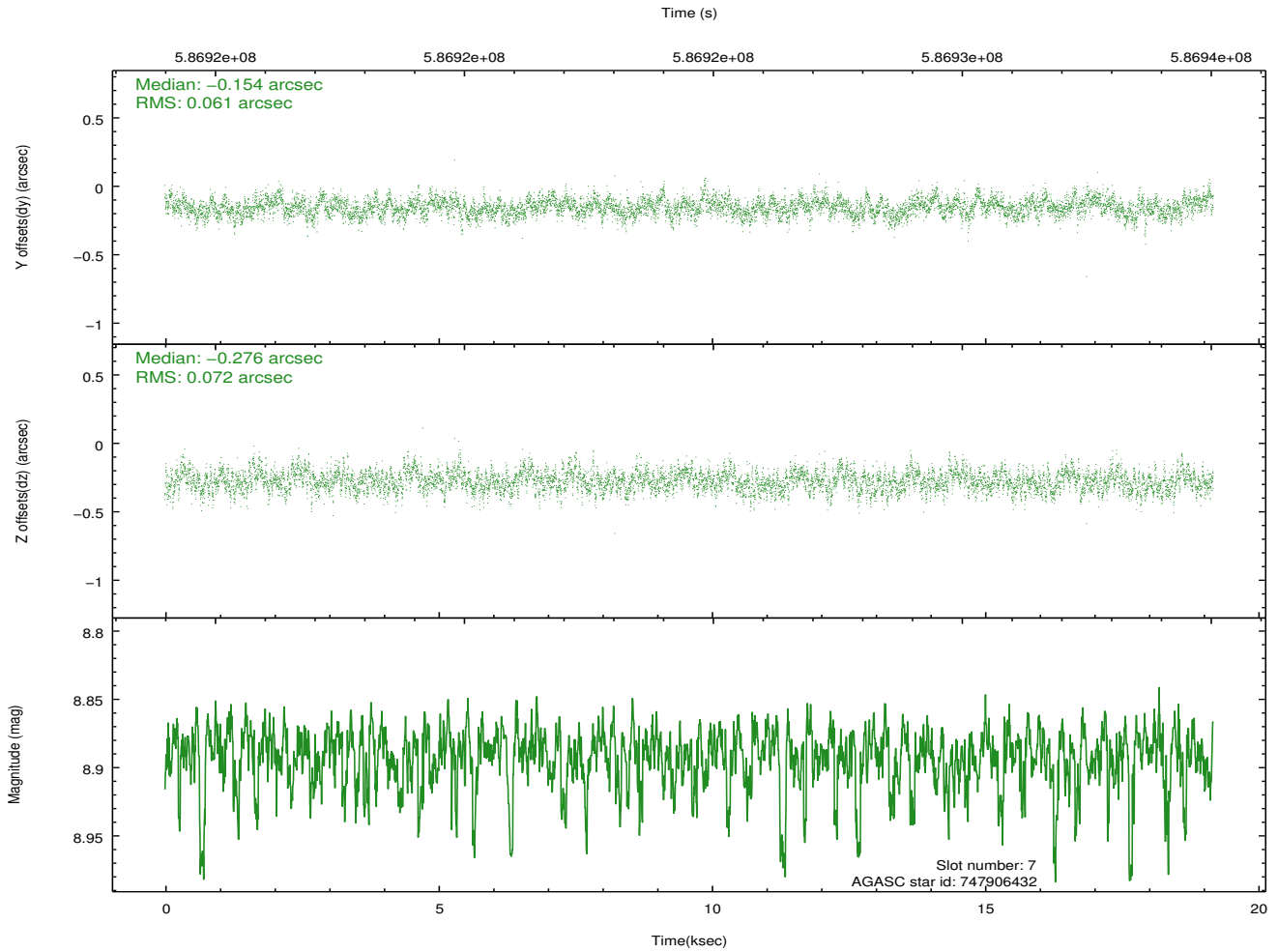
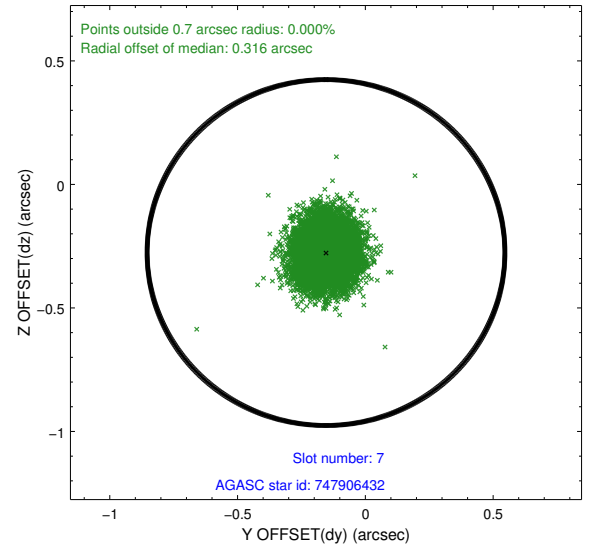
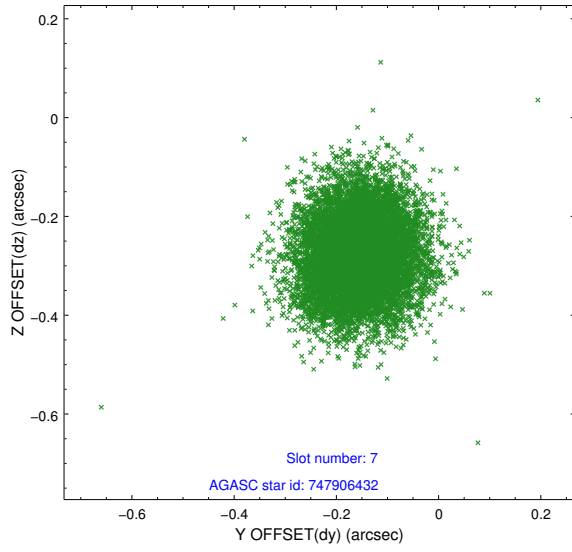
2.4.3 Slot 5



2.4.4 Slot 6

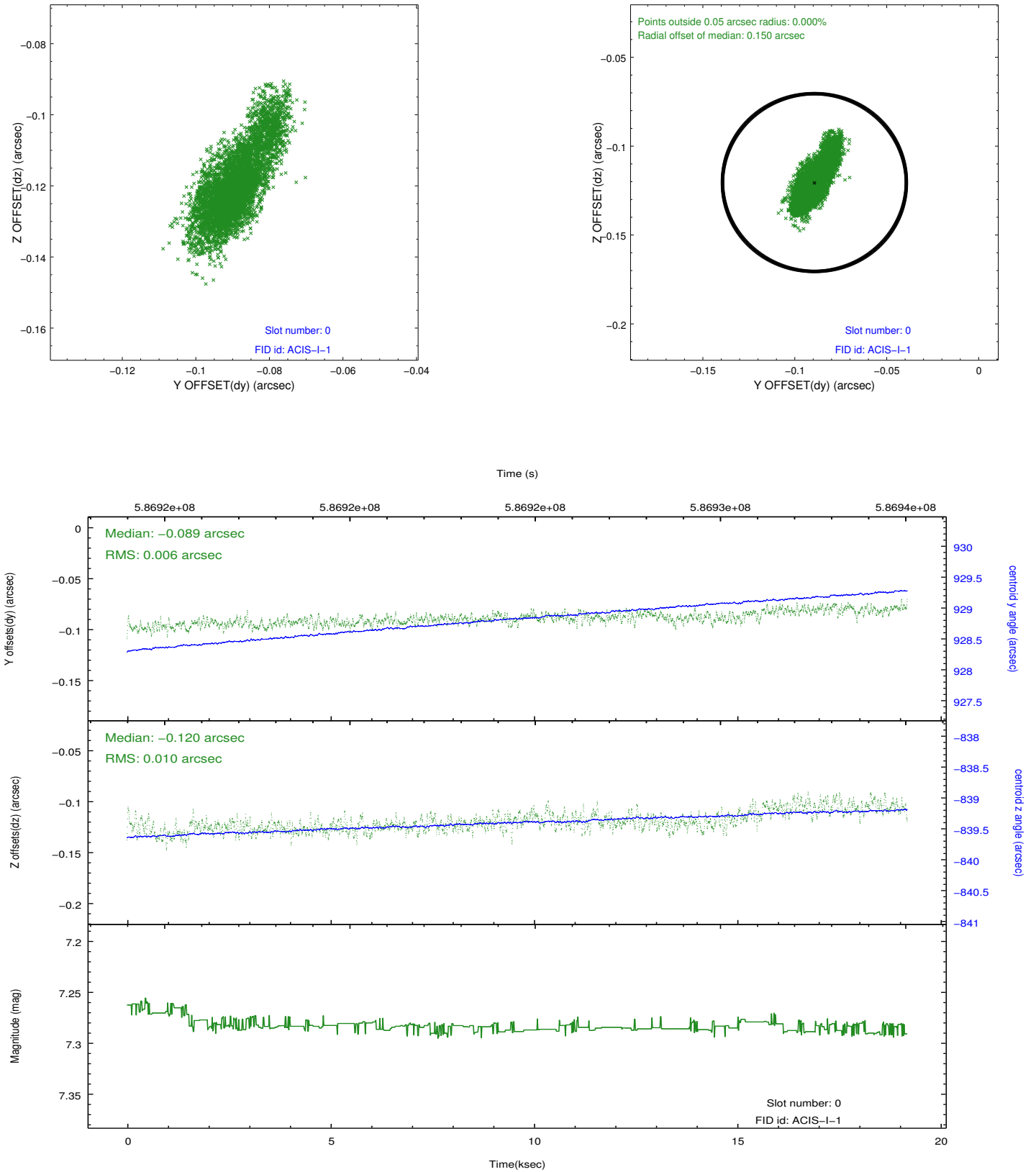


2.4.5 Slot 7

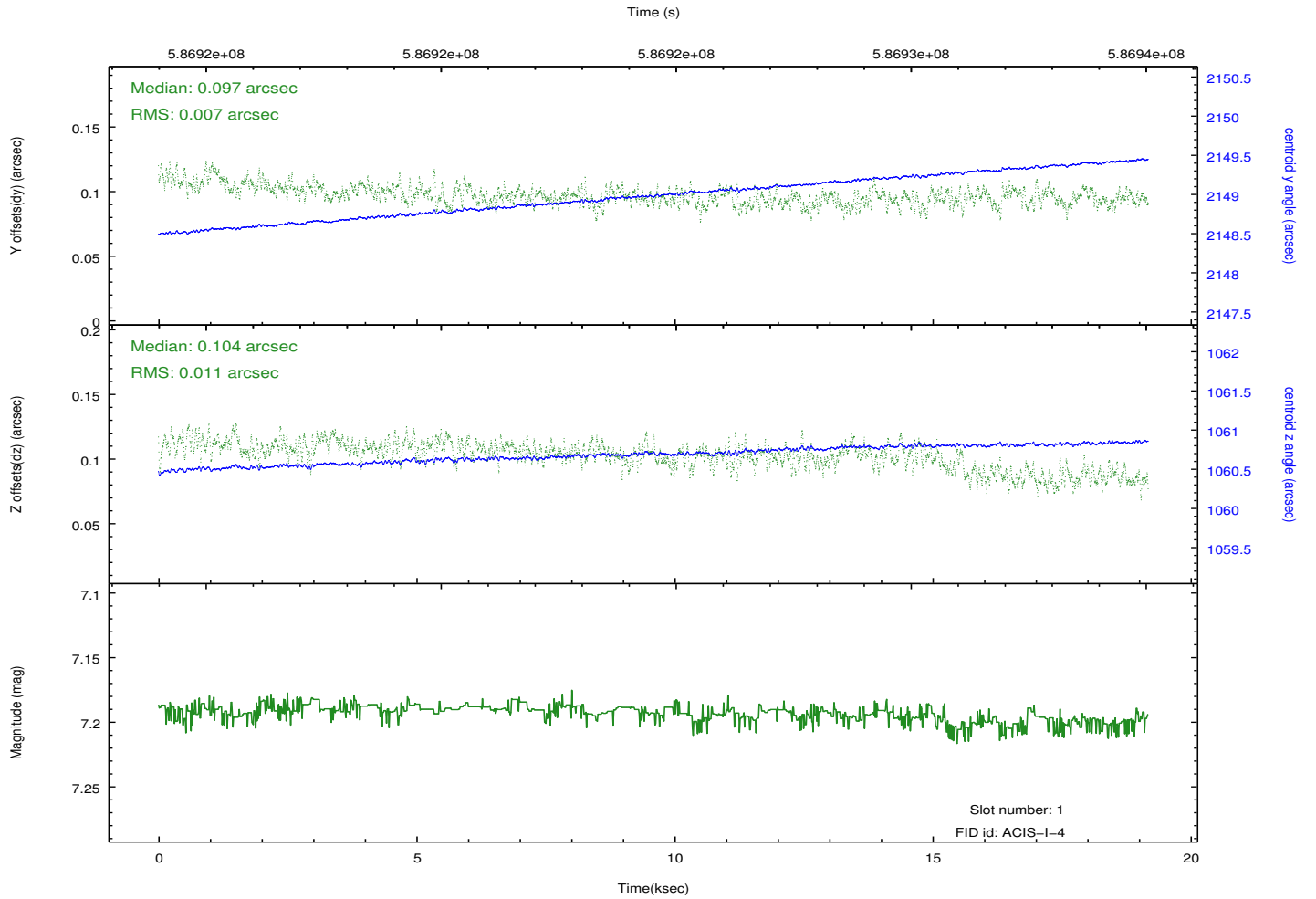
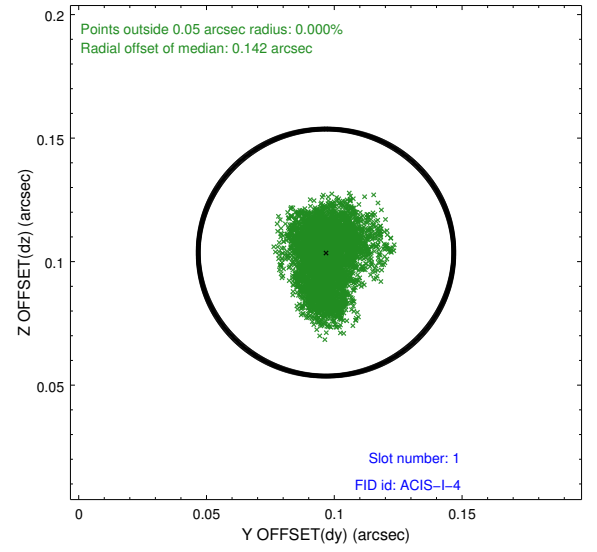
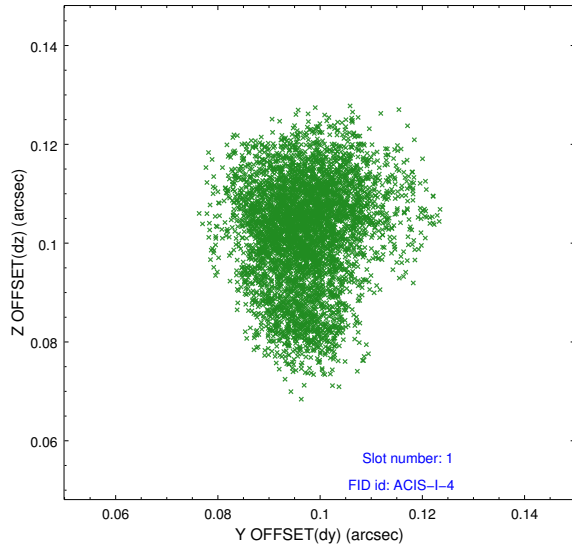


2.5 FID Slots

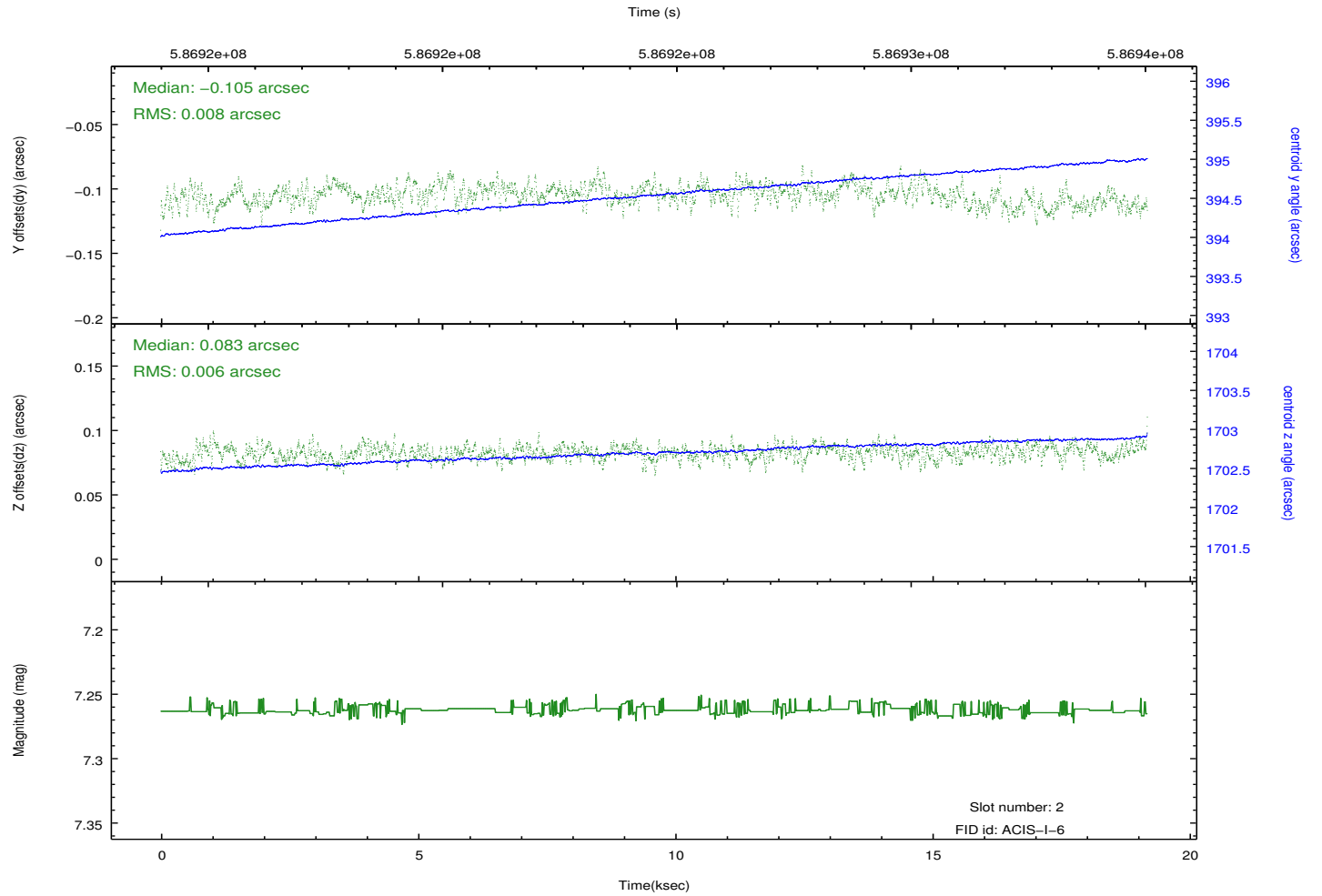
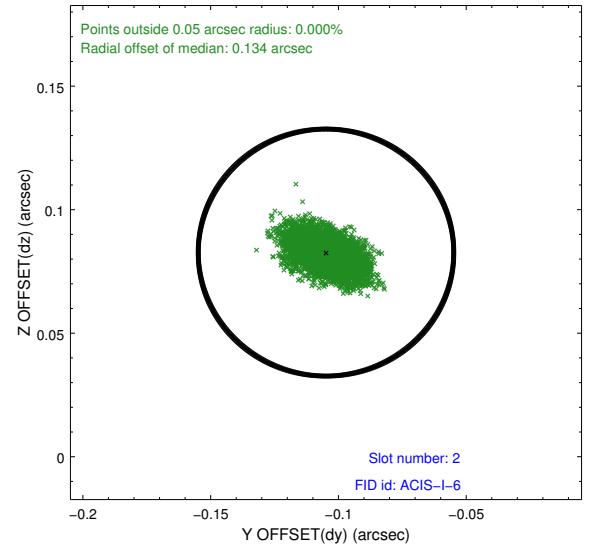
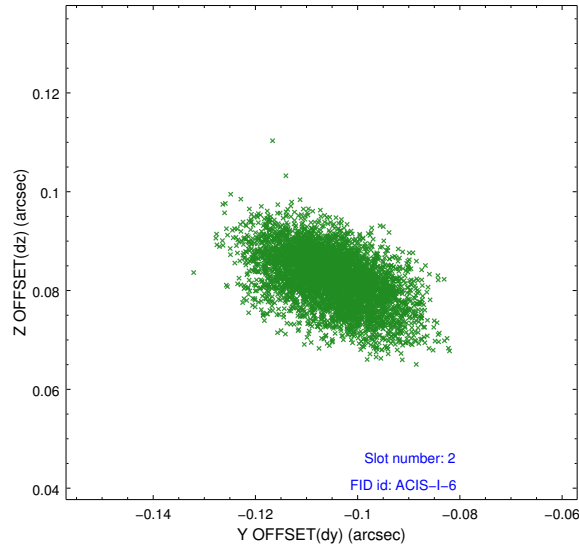
2.5.1 Slot 0



2.5.2 Slot 1



2.5.3 Slot 2



A Summary

A.1 Status

V&V Scientist	Beth Sundheim
V&V Date (YYYY-MM-DD)	2016.08.07
V&V Edition	1
V&V Disposition and Status	OK
V&V Charge Time	19.074300146818

A.2 Comments

Joint proposal with HST.