

V&V Reference Report

L2 ASCDS Version : 10.4.3

Observation 17725 - L2 Version 1
Chandra X-Ray Center

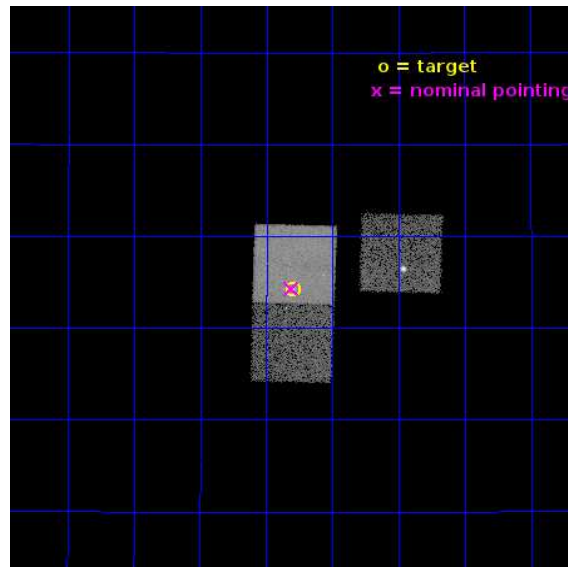
L2 Processing Date : Jan 12 2016

Contents

1	Front	2
2	OBI	3
2.1	OBI	3
2.1.1	Images	3
2.1.2	Bias	3
2.1.3	Parameters	4
2.1.4	Events	4
2.2	Compared Parameters	5
2.3	Aspect	6
2.4	Star Slots	9
2.4.1	Slot 3	9
2.4.2	Slot 4	10
2.4.3	Slot 5	11
2.4.4	Slot 6	12
2.4.5	Slot 7	13
2.5	FID Slots	14
2.5.1	Slot 0	14
2.5.2	Slot 1	15
2.5.3	Slot 2	16
A	Summary	17
A.1	Status	17
A.2	Comments	17

1 Front

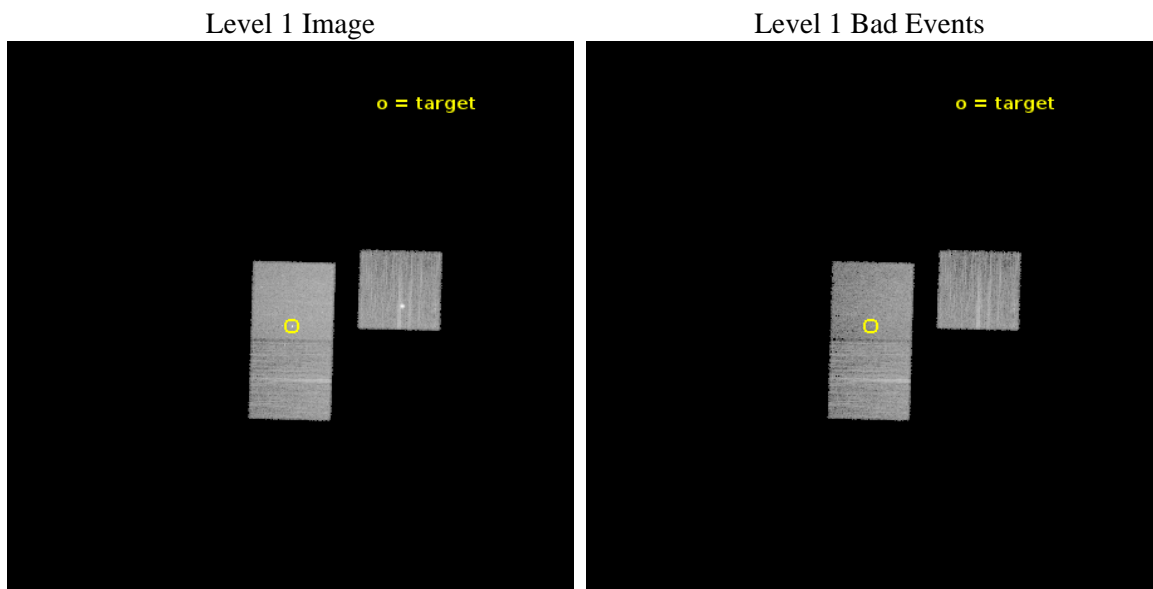
seq_num	201036	Sequence number
obs_id	17725	Observation id
title	The rotation/activity relation of M dwarfs	Proposal title
observer	Dr Beate Stelzer	Principal investigator
object	202059188	Source name
dtcycle	0	
cycle	P	events from which exps? Prim/Second/Both
ra_targ	92.575	Observer's specified target RA [deg]
dec_targ	22.571667	Observer's specified target Dec [deg]
ra_nom	92.577627241767	Nominal RA [deg]
dec_nom	22.571617331891	Nominal Dec [deg]
roll_nom	271.62769272864	Nominal Roll [deg]
revision	1	Processing version of data
ontime	15115.474924684	Sum of GTIs [s]
livetime	14917.980116942	Livetime [s]
ontime3	15112.251844406	Sum of GTIs [s]
ontime6	15115.43388474	Sum of GTIs [s]
ontime7	15115.474924684	Sum of GTIs [s]
l2events	69073	Number of level 2 events



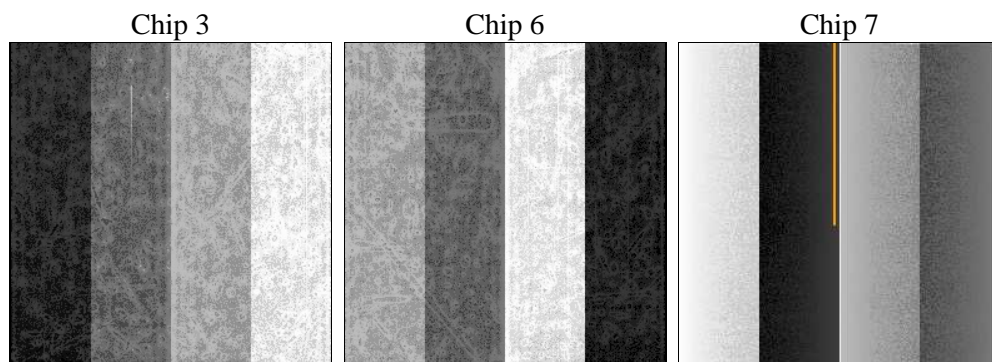
2 OBI

2.1 OBI

2.1.1 Images



2.1.2 Bias



2.1.3 Parameters

obi_num	0	Obi number	sched_exp_time	15000.000000	[s] Scheduled observation exposure time
ascdsver	10.4.3	Processing system revision	ontime	15115.474924684	Sum of GTIs [s]
caldsver	4.7.0	 	ontime3	15112.251844406	Sum of GTIs [s]
date	2016-01-13T02:25:57	Date and time of file creation	ontime6	15115.43388474	Sum of GTIs [s]
revision	1	Processing version of data	ontime7	15115.474924684	Sum of GTIs [s]
			l1events	286985	Number of level 1 events

2.1.4 Events

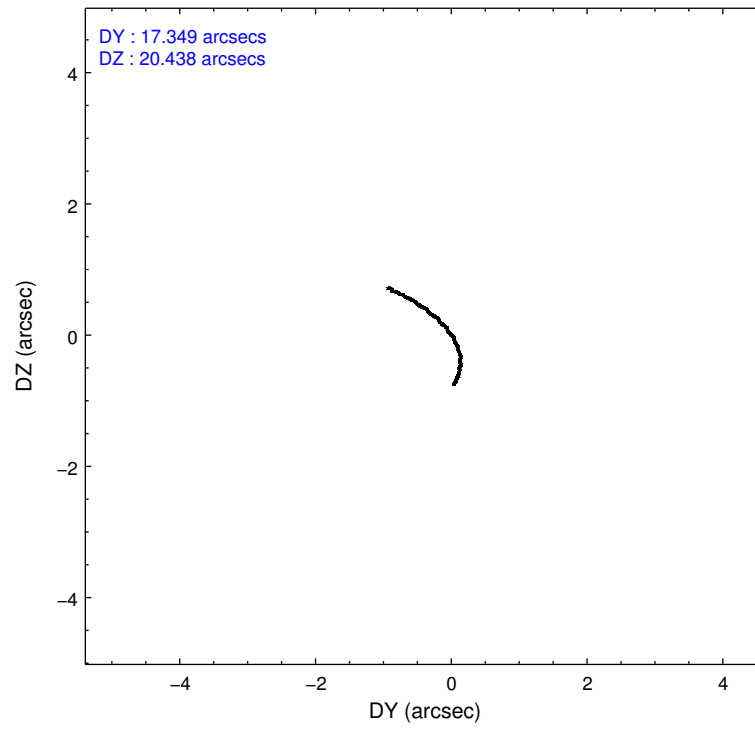
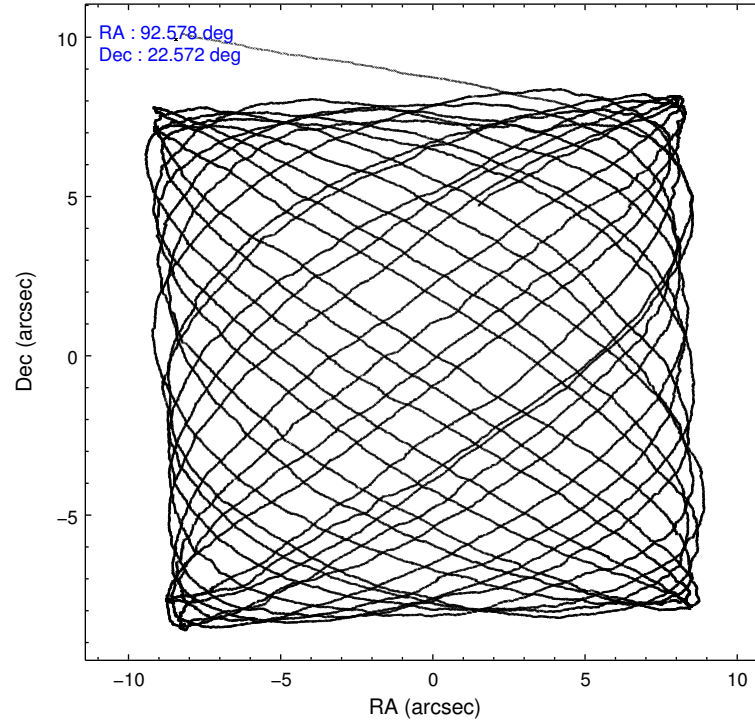
	ccd 3	ccd 6	ccd 7
level 1 events	86225	87090	113670
rejected events	74124	76992	63489
rejected %	85%	88%	55%

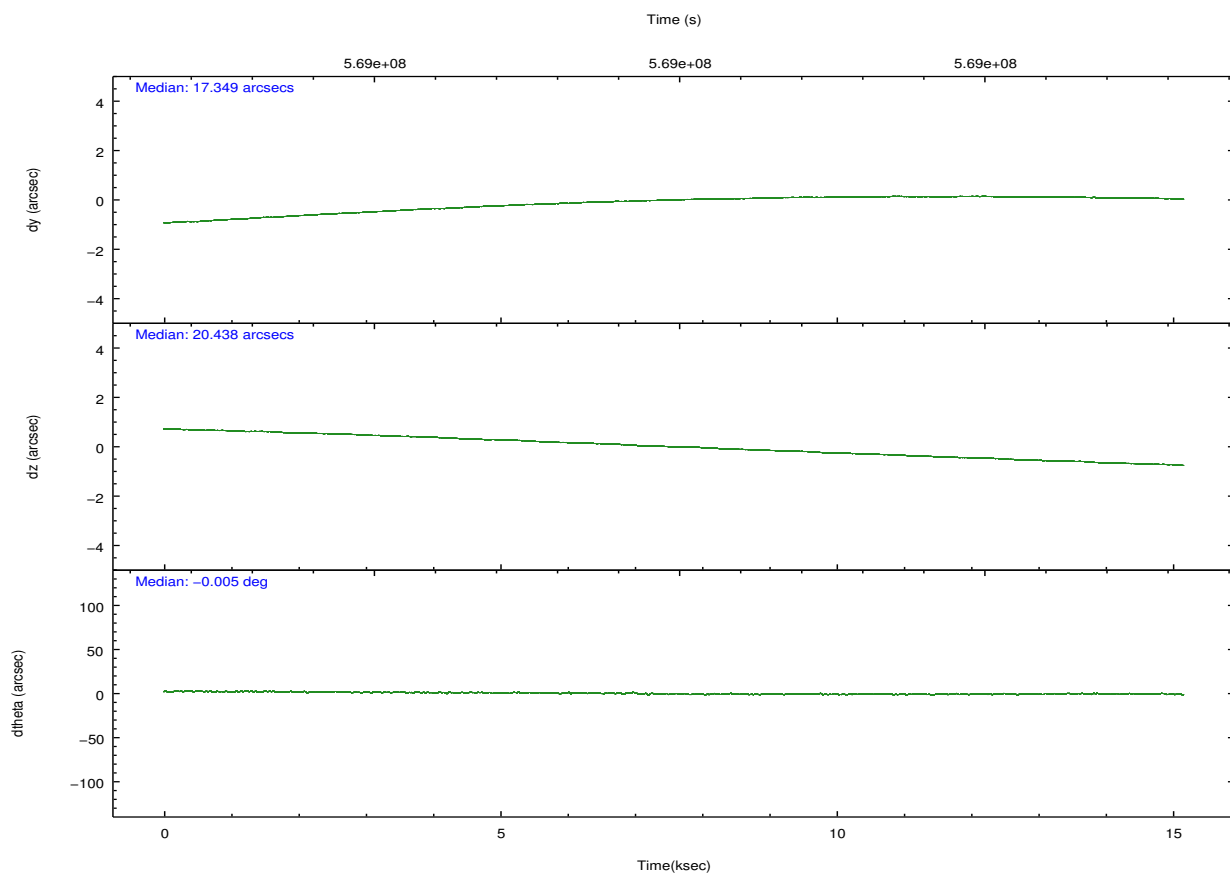
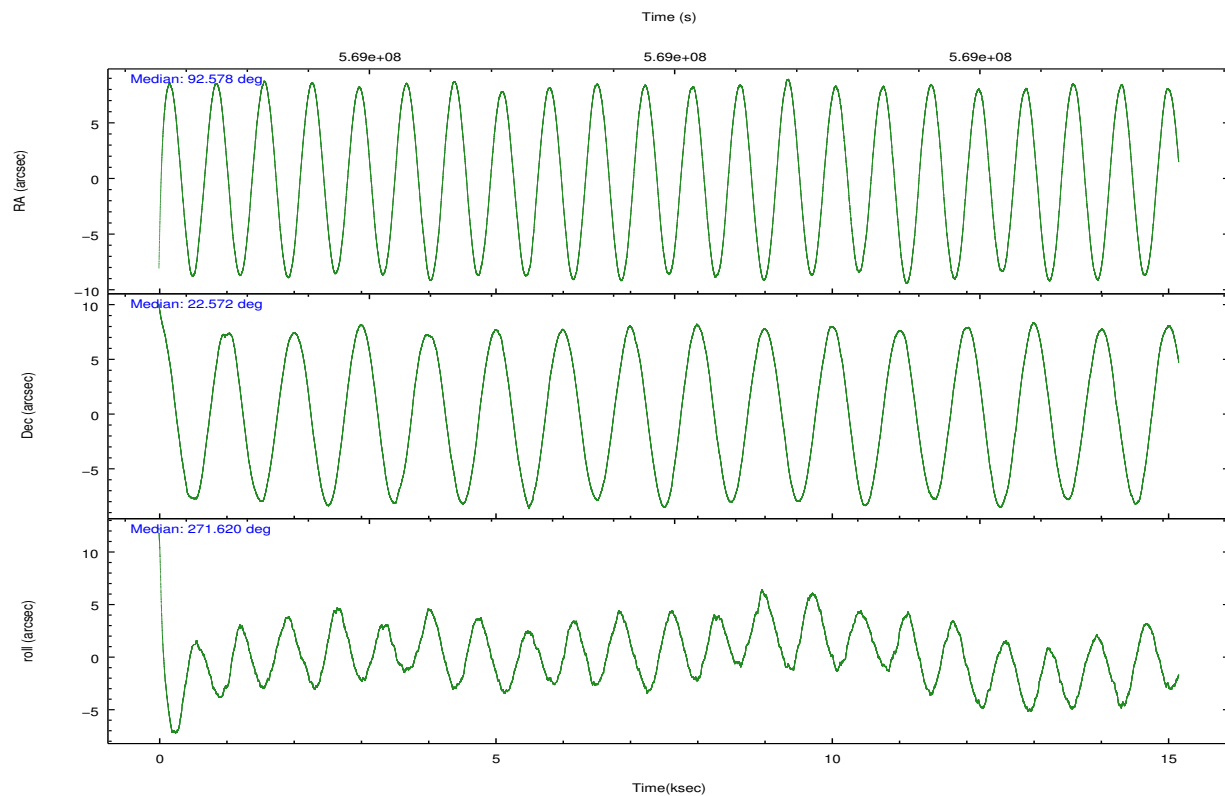
	ccd 3	ccd 6	ccd 7
grade 0 events	5956	3471	4556
	6%	3%	4%
grade 1 events	64	45	167
	0%	0%	0%
grade 2 events	2192	2353	10476
	2%	2%	9%
grade 3 events	1075	989	4155
	1%	1%	3%
grade 4 events	967	975	4017
	1%	1%	3%
grade 5 events	4451	4351	11541
	5%	4%	10%
grade 6 events	1916	2314	26999
	2%	2%	23%
grade 7 events	69604	72592	51759
	80%	83%	45%

2.2 Compared Parameters

Parameter	Planned	Actual	Parameter	Planned	Actual
Instrument	ACIS	ACIS	Obspar format version number	7	7
Detector	ACIS-367	ACIS-367	Obspar file type	PREDICTED	ACTUAL
Grating	NONE	NONE	Obspar update status	NONE	UPDATED
Data mode	VFAINT	VFAINT	CCD I0 on	O1	N
Observation mode	POINTING	POINTING	CCD I1 on	O2	N
[deg] Pointing RA	92.561674	92.577627241767	CCD I2 on	O3	N
[deg] Pointing Dec	22.594774	22.57161733189081	CCD I3 on	O4	Y
[deg] Pointing Roll	271.477180	271.6276927286413	CCD S0 on	N	N
[mm] SIM focus pos	-0.684267	-0.6828225247311905	CCD S1 on	N	N
[mm] SIM defocus	0	0.001444936568705701	CCD S2 on	O5	Y
[mm] SIM translation stage pos	-190.132523	-190.1425803651734	CCD S3 on	Y	Y
[mm] SIM translation stage offset	0	0.01005778216563158	CCD S4 on	N	N
[s] Observation start time (MET)	568992471.184000	568991341.77149	CCD S5 on	N	N
Observation start date	2016-01-12T13:26:43	2016-01-12T13:09:01	Number of optional ACIS chips dropped	3	3
[s] Observation end time (MET)	569007471.184000	569007789.94744	On-chip summing requested	N	N
Observation end date	2016-01-12T17:36:43	2016-01-12T17:43:09	Subarray requested	NONE	NONE
Read mode	TIMED	TIMED	Alternating exposures requested	N	N
			[s] Primary exposure time	0.000000	3.1

2.3 Aspect



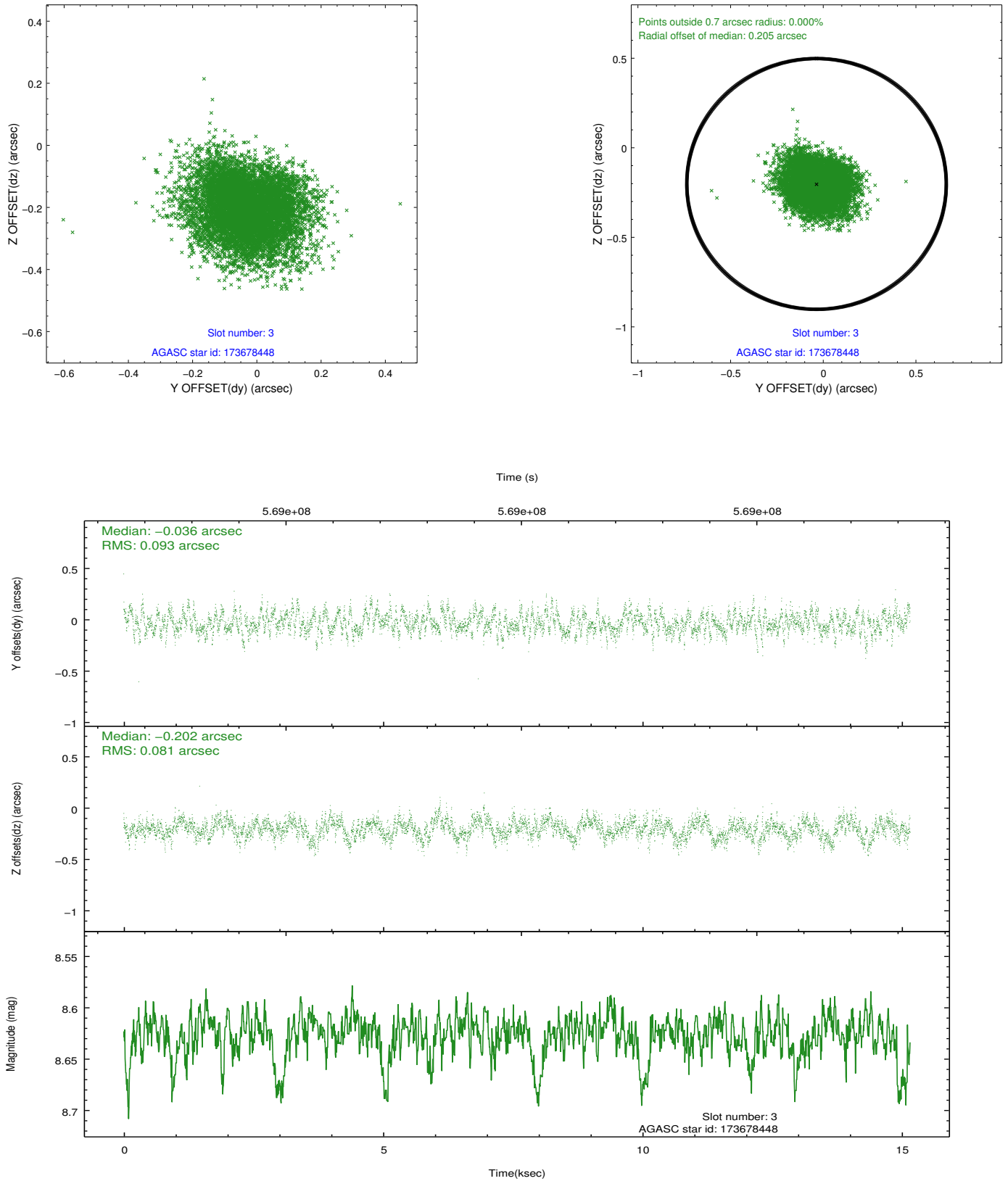


Slot Statistics

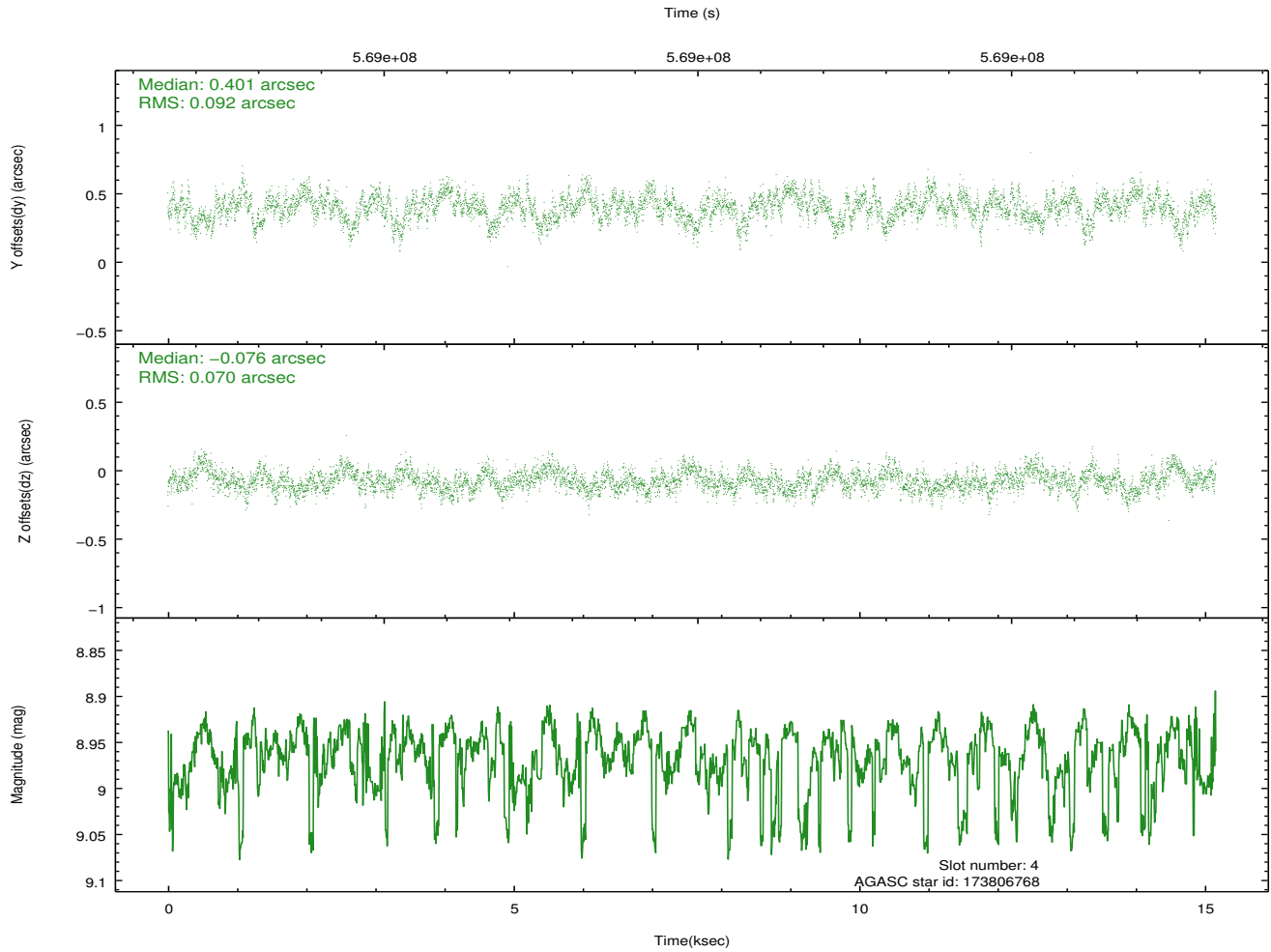
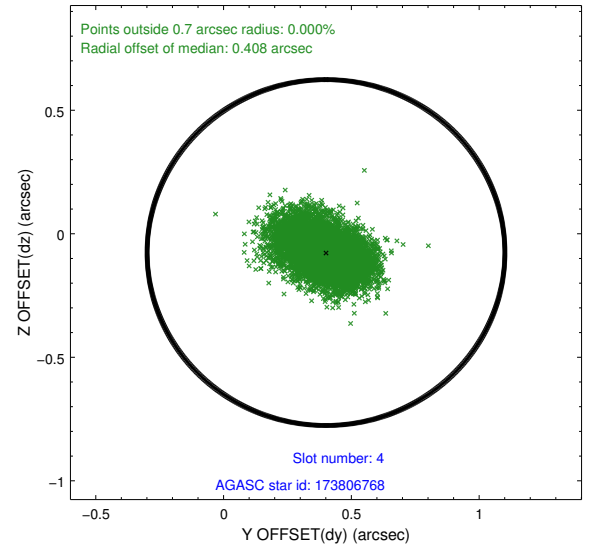
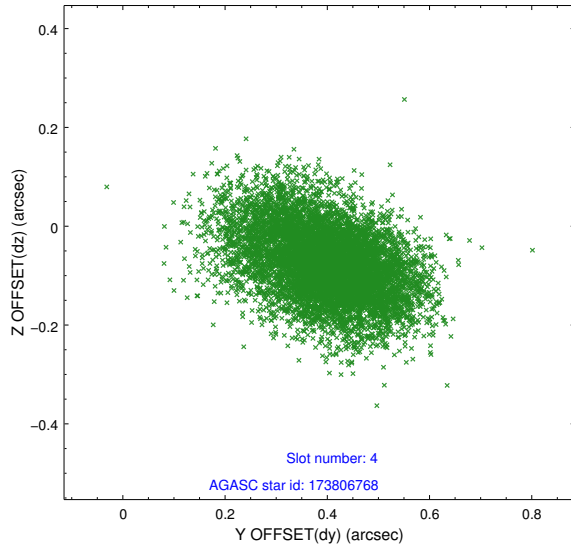
slot	status	used	id	mag	n_pts	med_dy	med_dz	dr1	dr2	ra	dec	mean_y	mean_z
0	FID		ACIS-S-2	7.12	3698	-0.177	-0.101	0.009	0.014	0.000000	0.000000	-770.37	-1742.03
1	FID		ACIS-S-4	7.22	3698	0.419	0.112	0.020	0.029	0.000000	0.000000	2143.34	166.40
2	FID		ACIS-S-5	7.23	3698	-0.274	-0.002	0.018	0.031	0.000000	0.000000	-1822.95	160.24
3	GUIDE	used	173678448	8.63	7395	-0.036	-0.202	0.131	0.213	91.952613	22.002627	2076.20	-2086.15
4	GUIDE	used	173806768	8.96	7392	0.401	-0.076	0.122	0.203	92.260749	22.060863	1895.86	-1053.15
5	GUIDE	used	244334128	7.29	7396	-0.021	0.225	0.085	0.134	91.945199	22.707676	-462.37	-2035.78
6	GUIDE	used	246034176	6.01	7397	-0.204	0.044	0.075	0.121	92.984377	23.207059	-2169.44	1454.79
7	GUIDE	used	246028712	8.37	7395	-0.138	0.013	0.086	0.138	92.939770	23.030136	-1536.22	1292.95

2.4 Star Slots

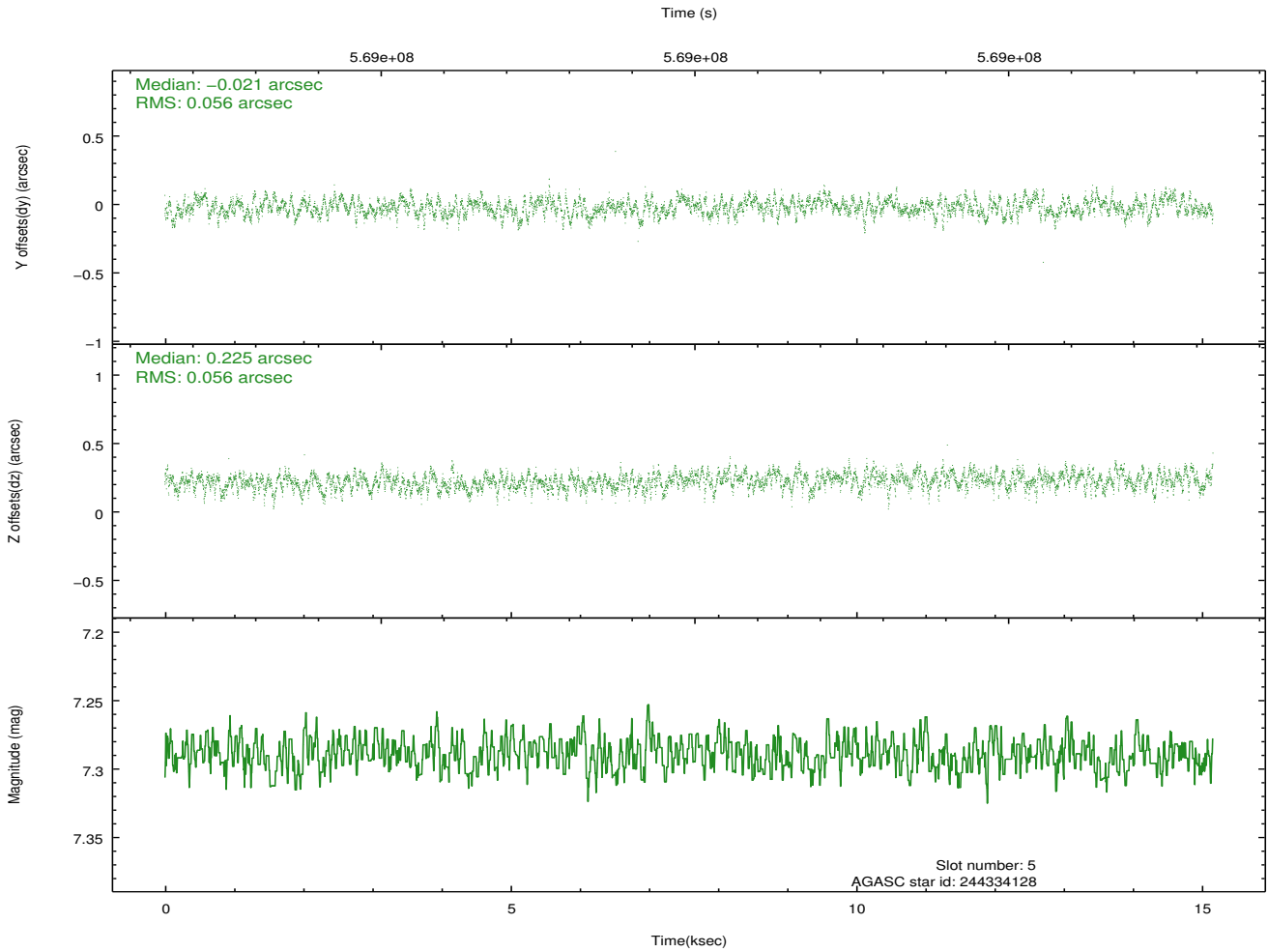
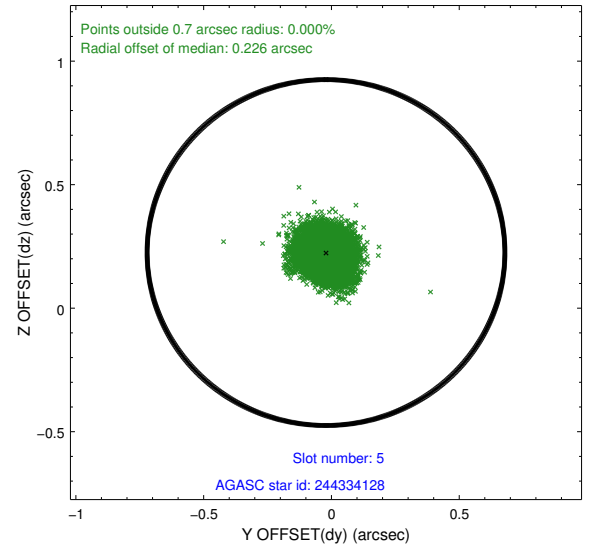
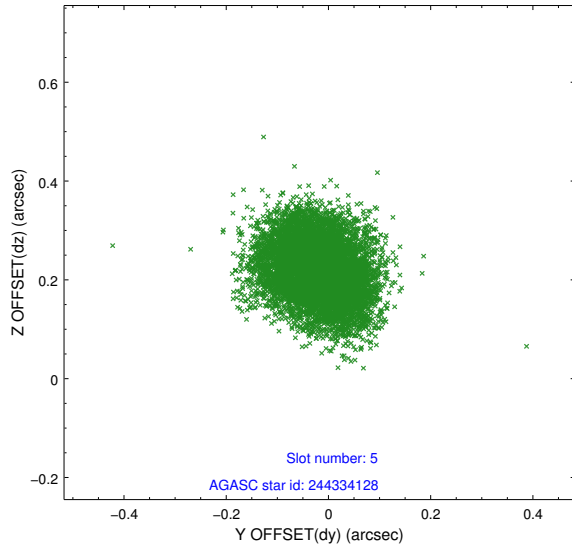
2.4.1 Slot 3



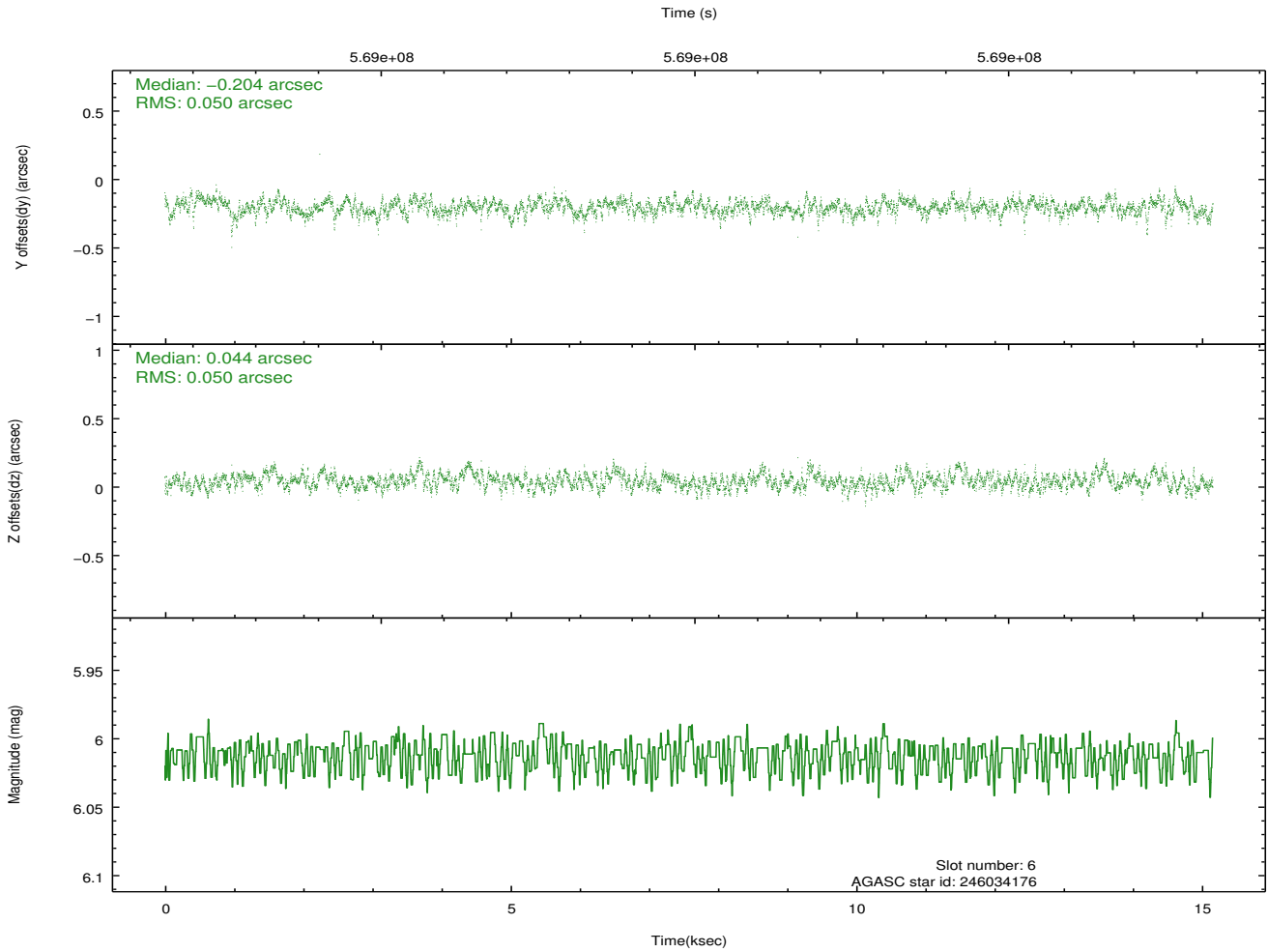
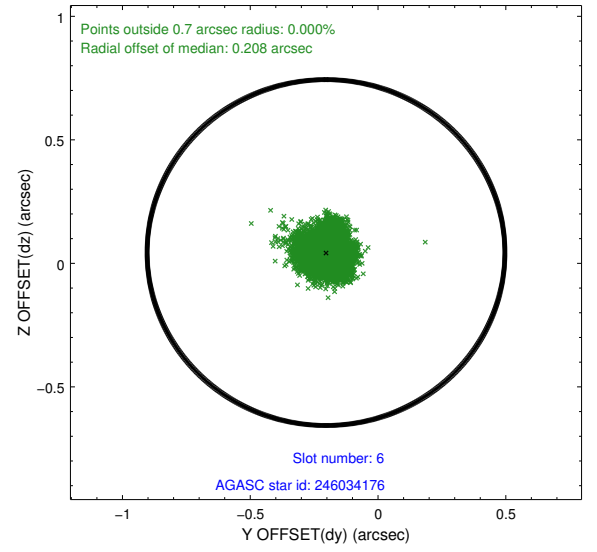
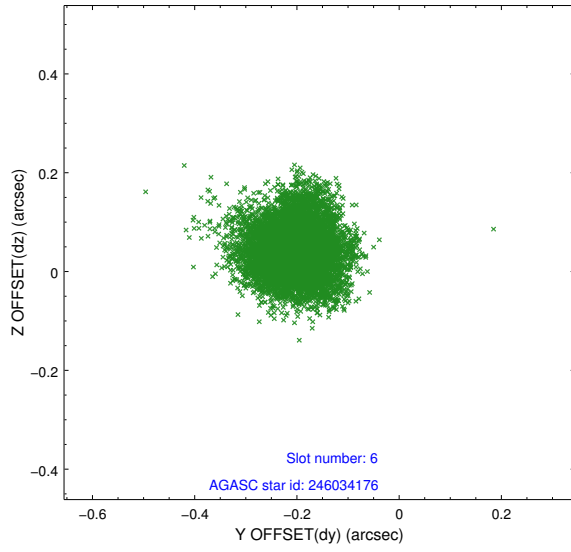
2.4.2 Slot 4



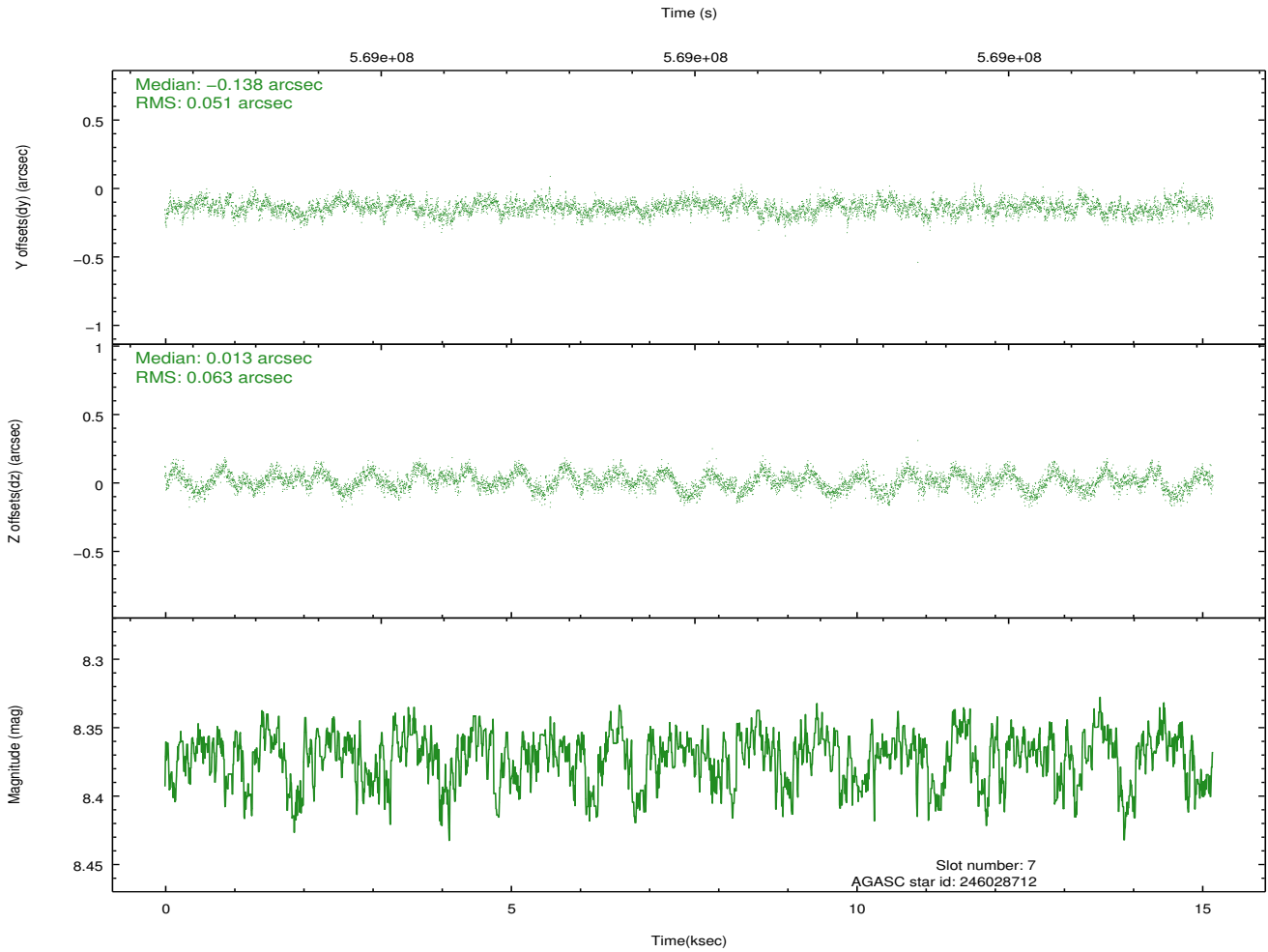
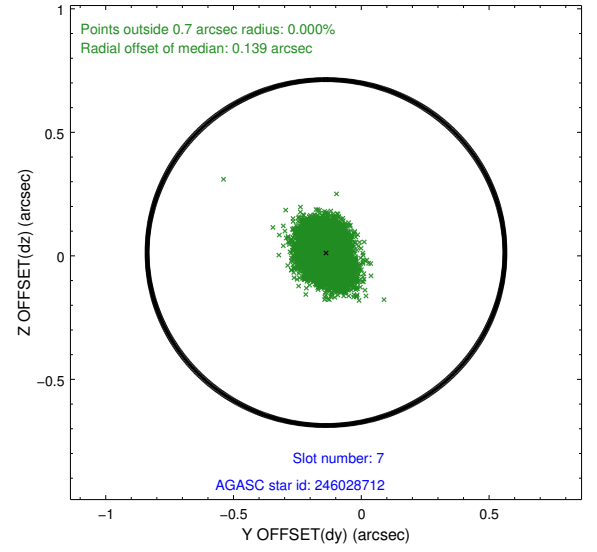
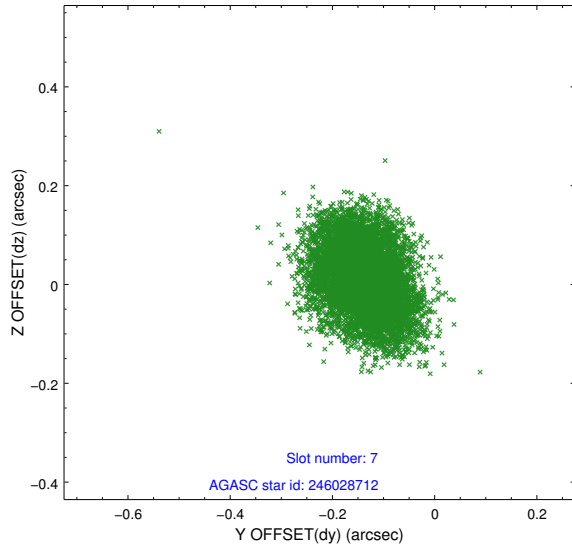
2.4.3 Slot 5



2.4.4 Slot 6

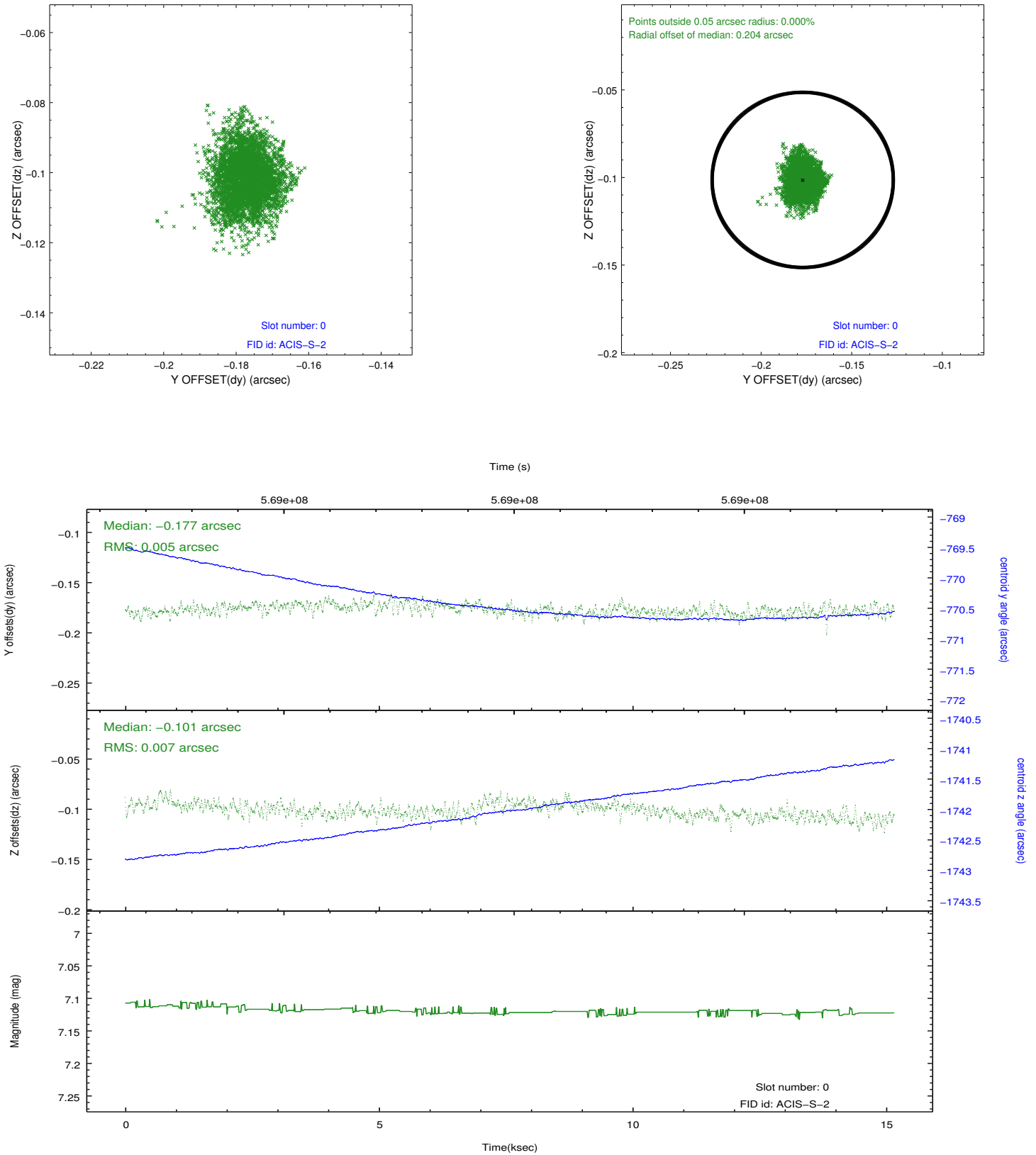


2.4.5 Slot 7

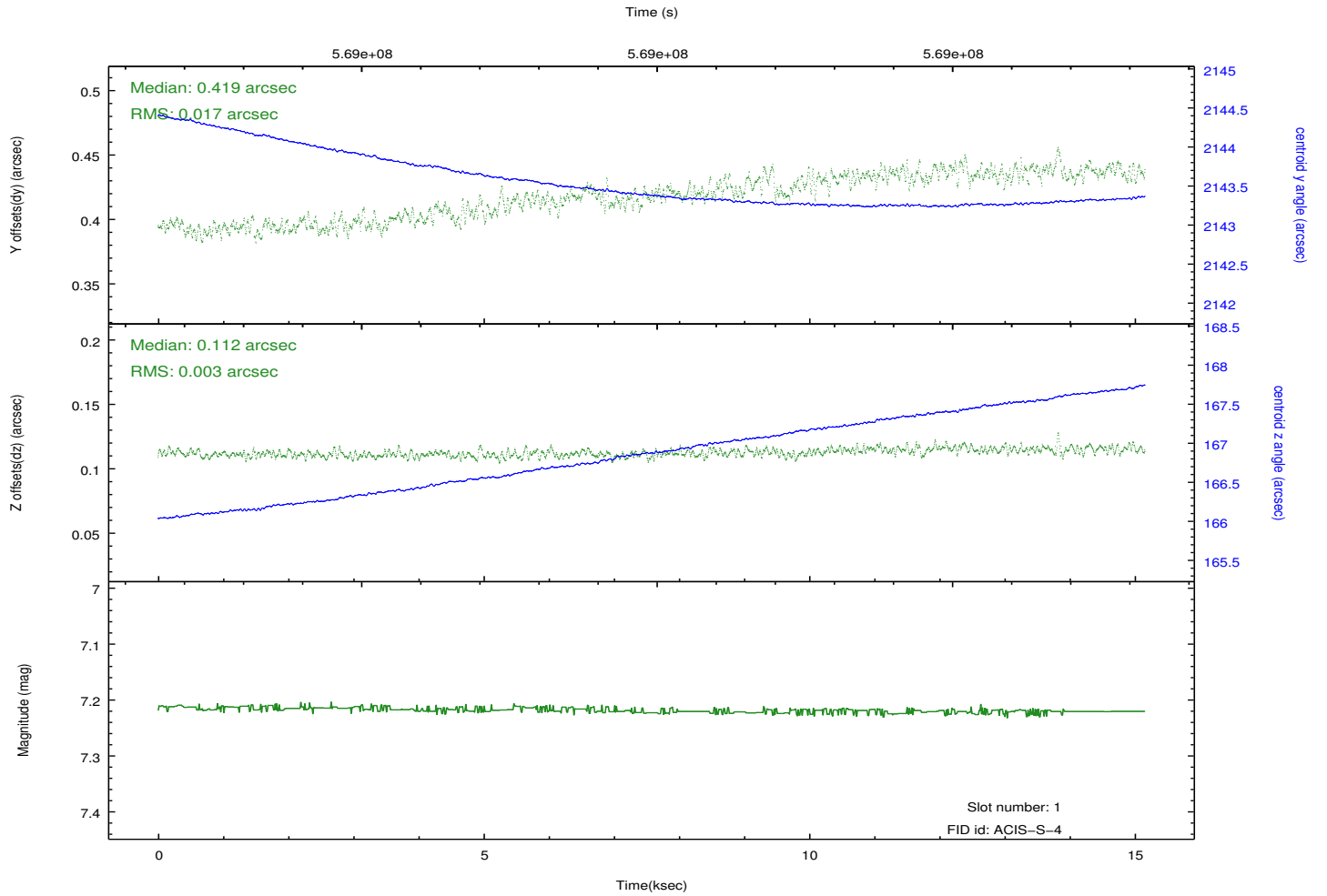
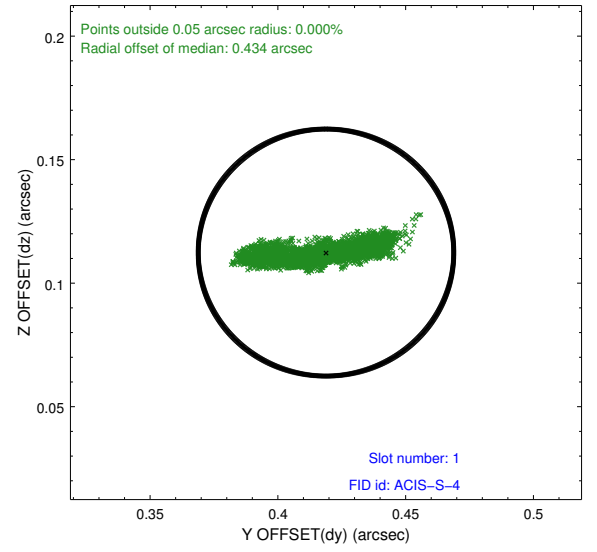
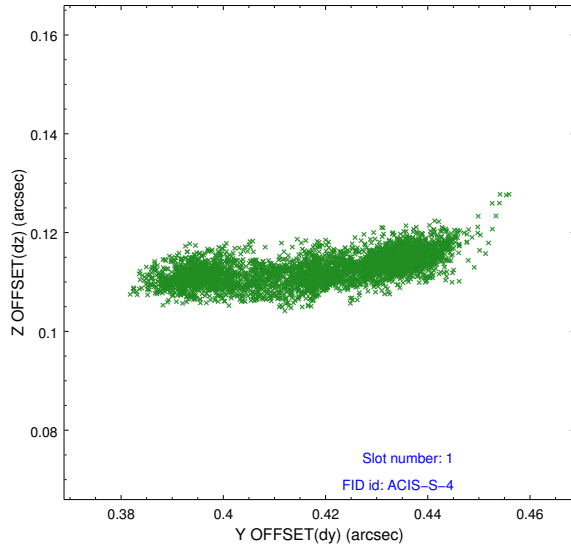


2.5 FID Slots

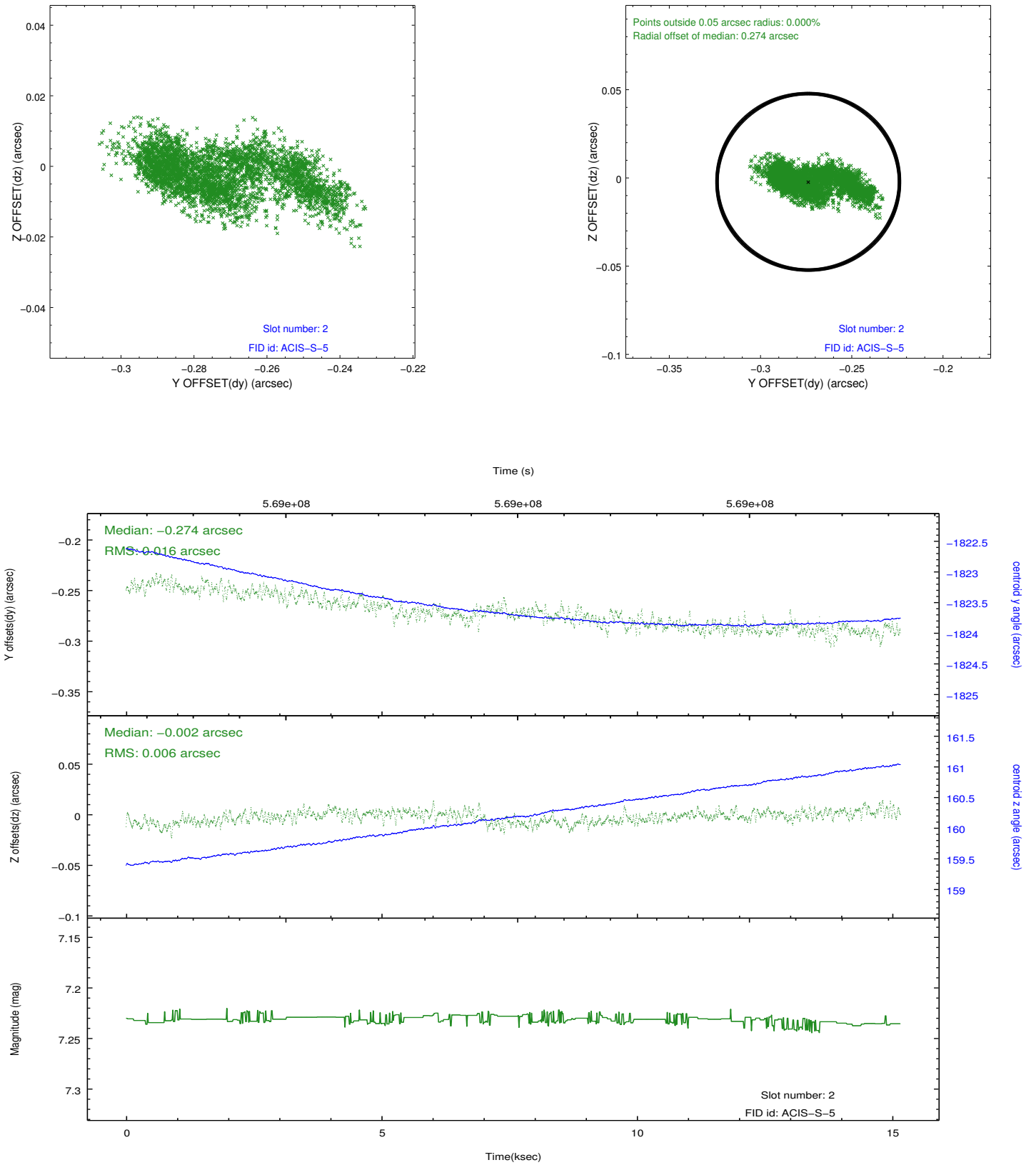
2.5.1 Slot 0



2.5.2 Slot 1



2.5.3 Slot 2



A Summary

A.1 Status

V&V Scientist	Joy Nichols
V&V Date (YYYY-MM-DD)	2016.01.13
V&V Edition	1
V&V Disposition and Status	OK
V&V Charge Time	15.115474924684

A.2 Comments