

V&V Reference Report

L2 ASCDS Version : 10.4.3

Observation 17723 - L2 Version 1
Chandra X-Ray Center

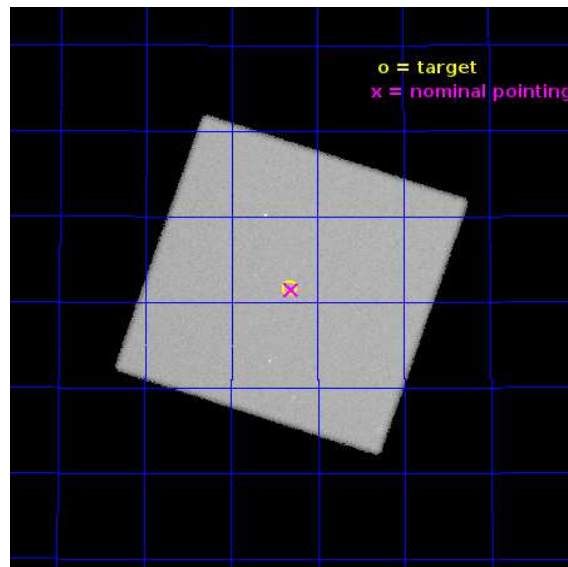
L2 Processing Date : Dec 23 2015

Contents

1	Front	2
2	OBI	3
2.1	OBI	3
2.1.1	Images	3
2.1.2	Parameters	4
2.1.3	Events	4
2.2	Compared Parameters	5
2.3	Aspect	6
2.4	Star Slots	9
2.4.1	Slot 3	9
2.4.2	Slot 4	10
2.4.3	Slot 5	11
2.4.4	Slot 6	12
2.4.5	Slot 7	13
2.5	FID Slots	14
2.5.1	Slot 0	14
2.5.2	Slot 1	15
2.5.3	Slot 2	16
A	Summary	17
A.1	Status	17
A.2	Comments	17

1 Front

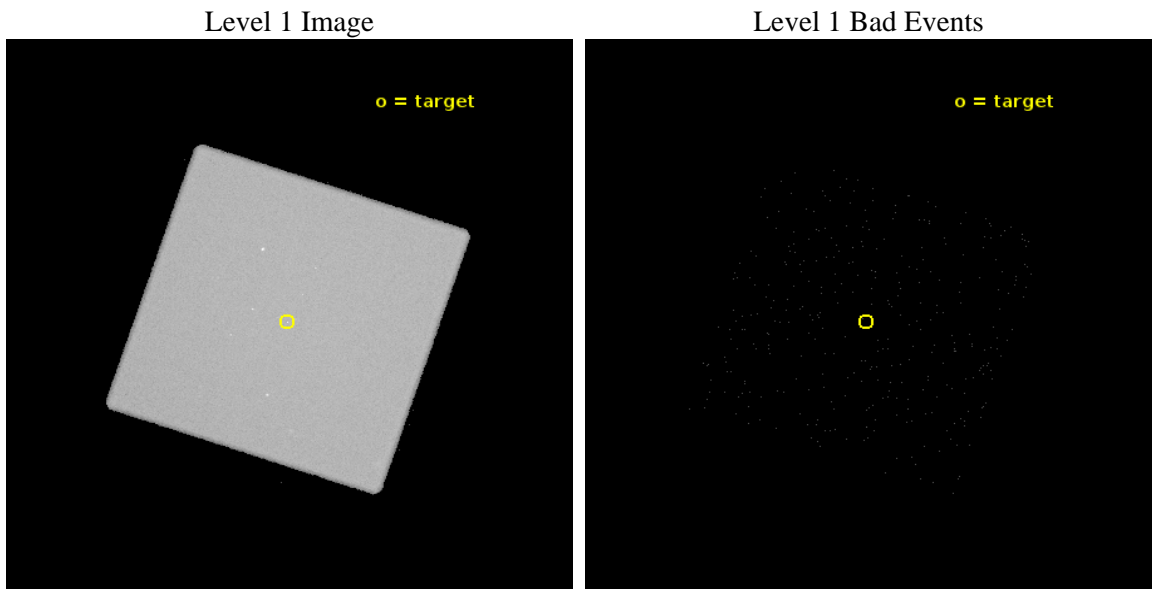
seq_num	201034	Sequence number
obs_id	17723	Observation id
title	The High-Energy Environs of the Anomalous Coronal Source Alpha Persei	Proposal title
observer	Dr Thomas Ayres	Principal investigator
object	ALP-PER	Source name
ra_targ	51.080833	Observer's specified target RA [deg]
dec_targ	49.861111	Observer's specified target Dec [deg]
ra_nom	51.075965402352	Nominal RA [deg]
dec_nom	49.858183070739	Nominal Dec [deg]
roll_nom	243.61522942421	Nominal Roll [deg]
revision	1	Processing version of data
ontime	21188.80120182	[s]
livetime	20988.277865643	Ontime multiplied by DTCOR
l2events	1628902	Number of level 2 events



2 OBI

2.1 OBI

2.1.1 Images



2.1.2 Parameters

obi_num	0	Obi number	sched_exp_time	21000.000000	[s] Scheduled observation exposure time
ascdsver	10.4.3	Processing system revision	ontime	21188.80120182	[s]
caldsver	4.7.0	 	l1events	2241006	Number of level 1 events
date	2015-12-23T11:29:20	Date and time of file creation			
revision	1	Processing version of data			

2.1.3 Events

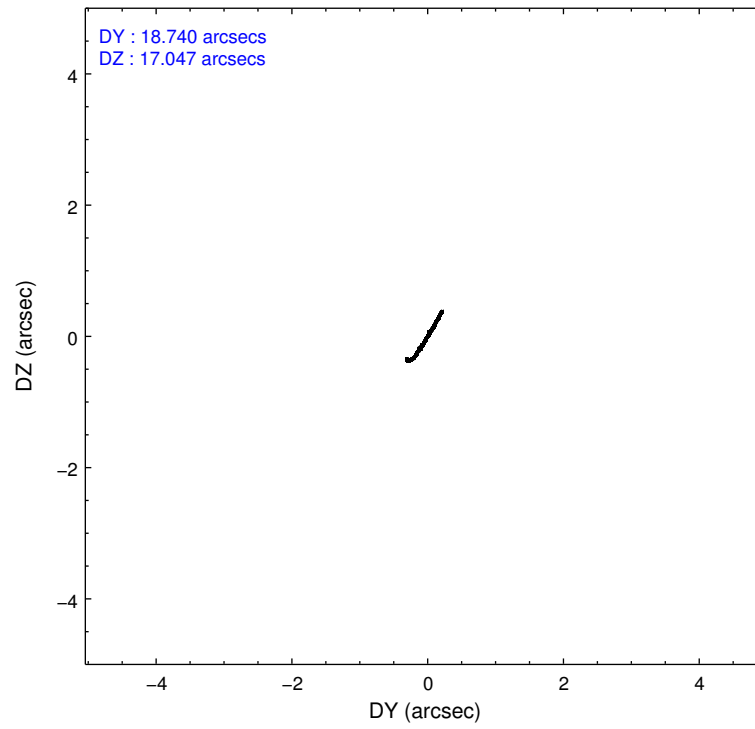
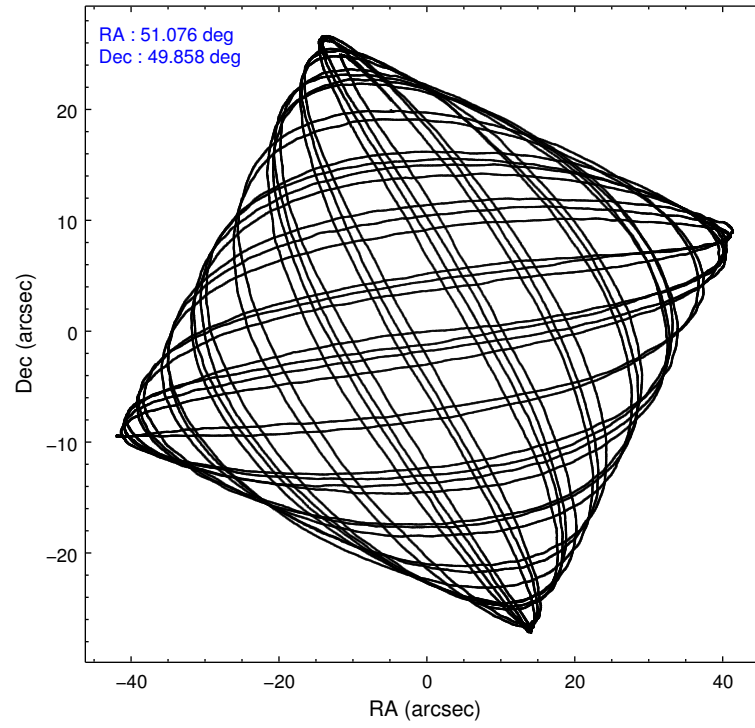
Level 1 Events

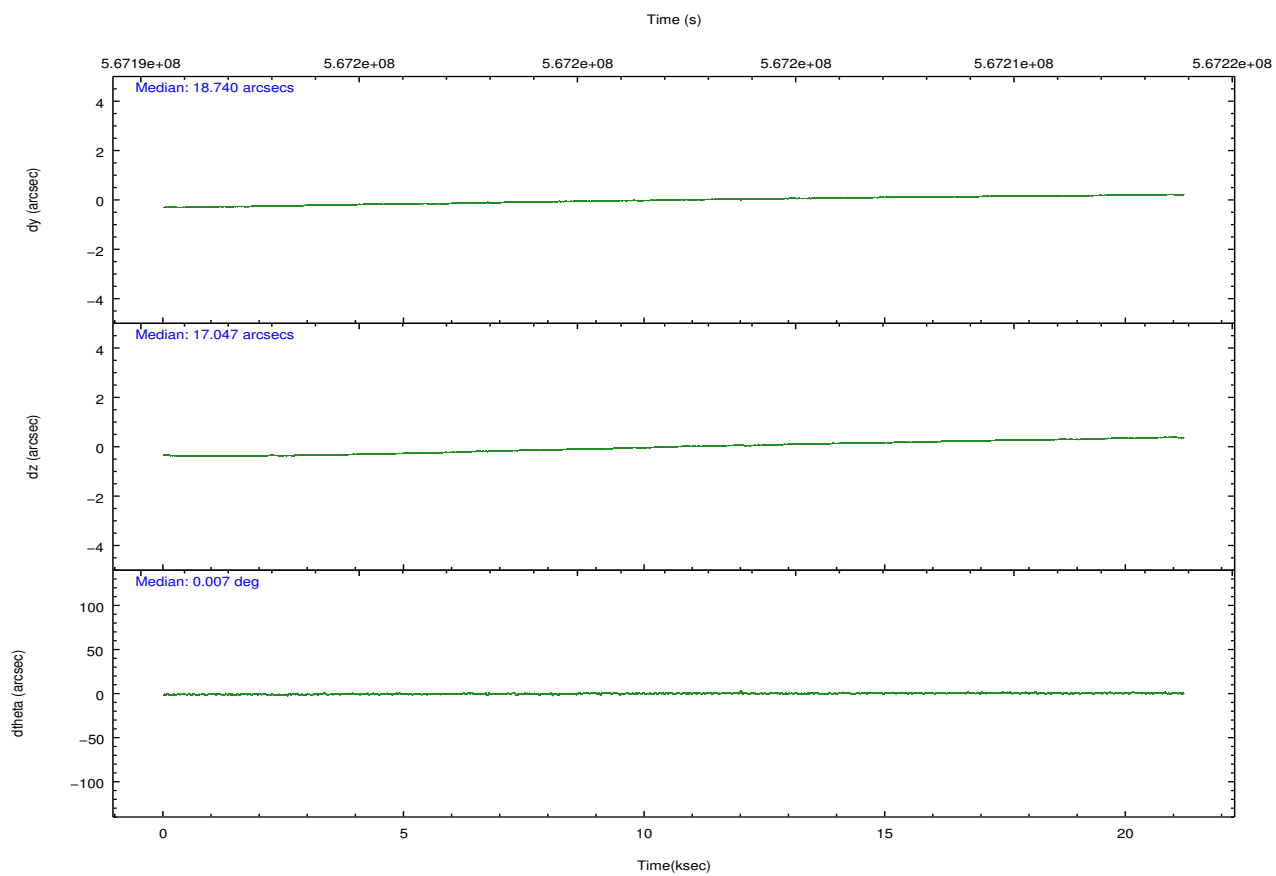
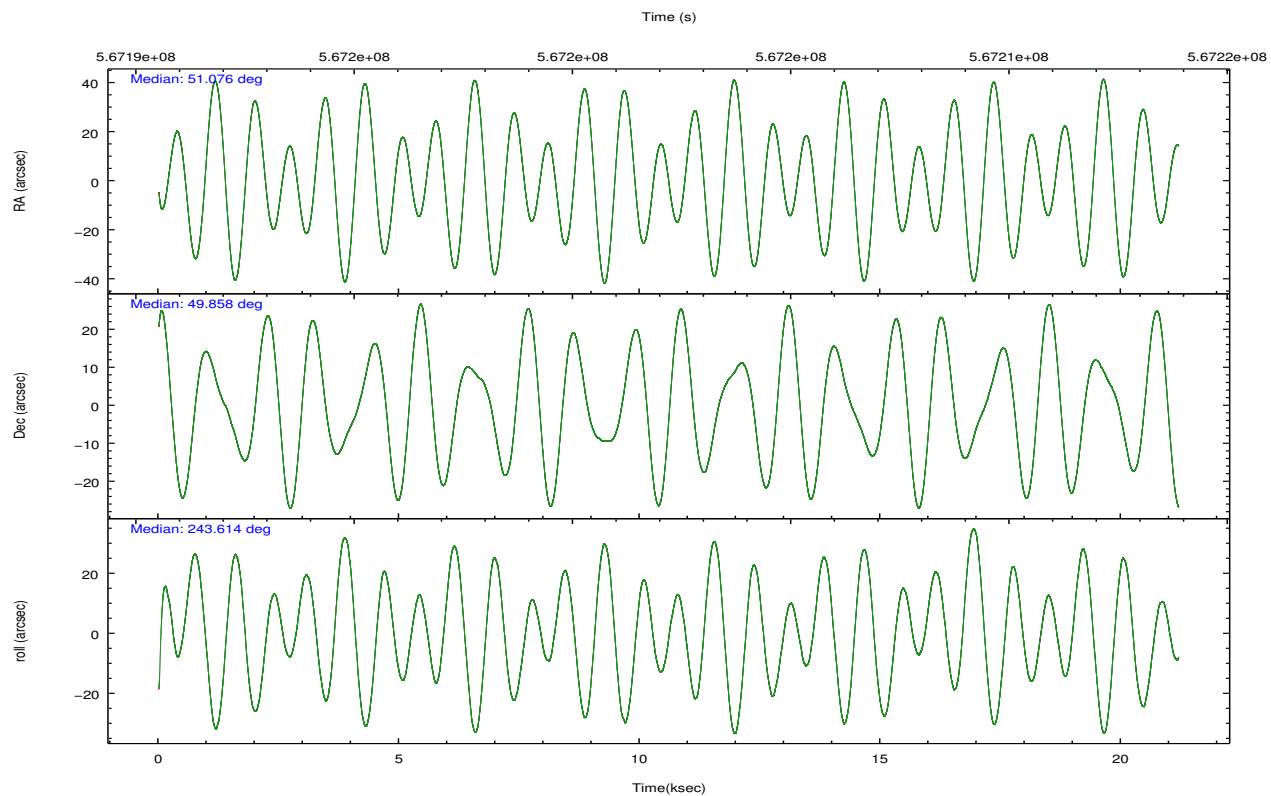
	segment 0
level 1 events	2241006
rejected events	62337
rejected %	2%

2.2 Compared Parameters

Parameter	Planned	Actual	Parameter	Planned	Actual
Instrument	HRC	HRC	Obspar format version number	7	7
Detector	HRC-I	HRC-I	Obspar file type	PREDICTED	ACTUAL
Grating	NONE	NONE	Obspar update status	NONE	UPDATED
Data mode	OBSERVING	OBSERVING			
Observation mode	POINTING	POINTING			
[deg] Pointing RA	51.072337	51.07596540235225			
[deg] Pointing Dec	49.885381	49.85818307073868			
[deg] Pointing Roll	243.713513	243.6152294242098			
[mm] SIM focus pos	-1.040293	-1.038866356238299			
[mm] SIM defocus	0	0.001426264420575141			
[mm] SIM translation stage pos	126.985494	126.9829799899862			
[mm] SIM translation stage offset	0	0.002508901615314585			
[s] Observation start time (MET)	567191828.184000	567191081.38182			
Observation start date	2015-12-22T17:16:00	2015-12-22T17:04:41			
[s] Observation end time (MET)	567212828.184000	567213778.47061			
Observation end date	2015-12-22T23:06:00	2015-12-22T23:22:58			

2.3 Aspect



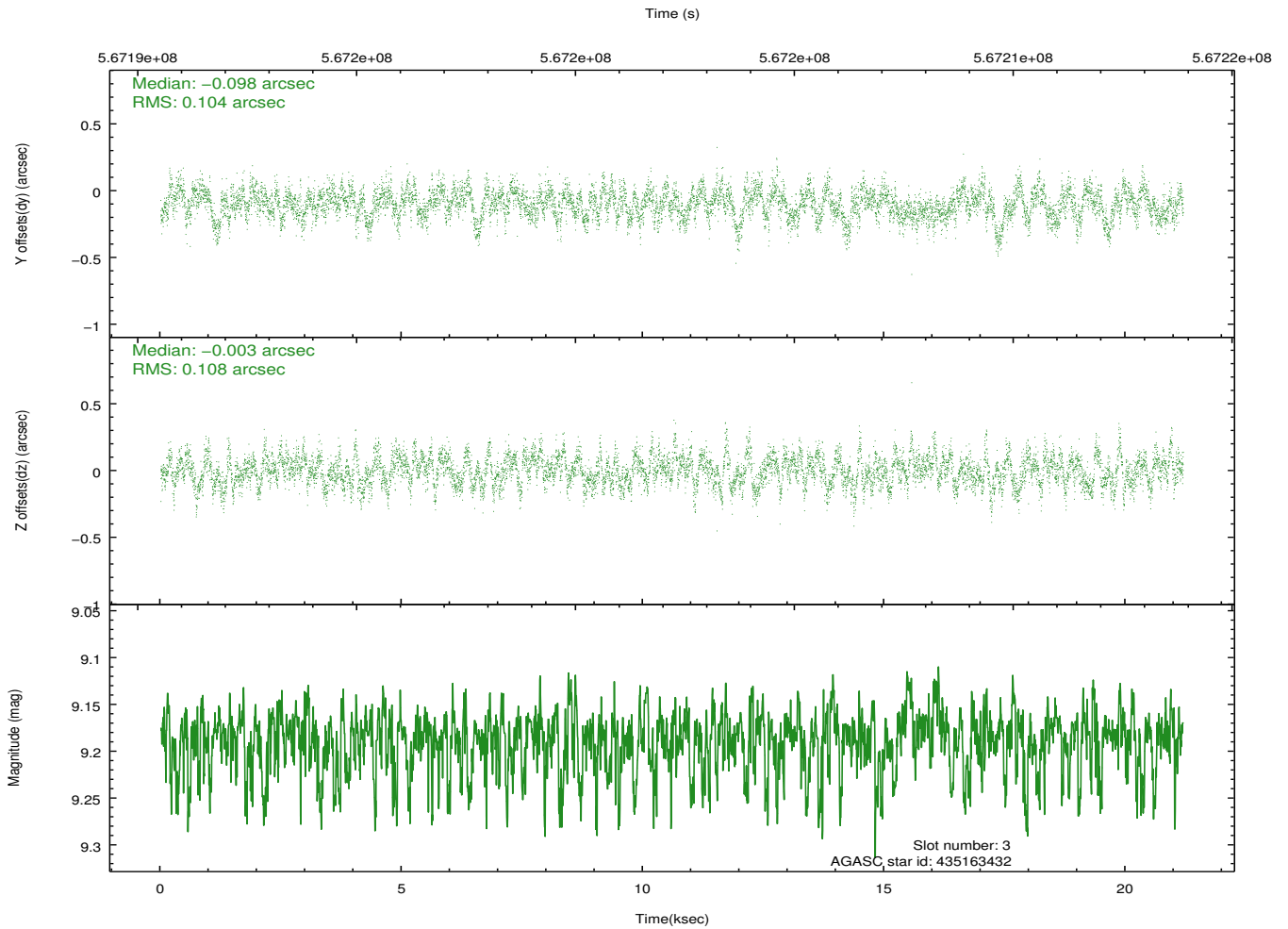
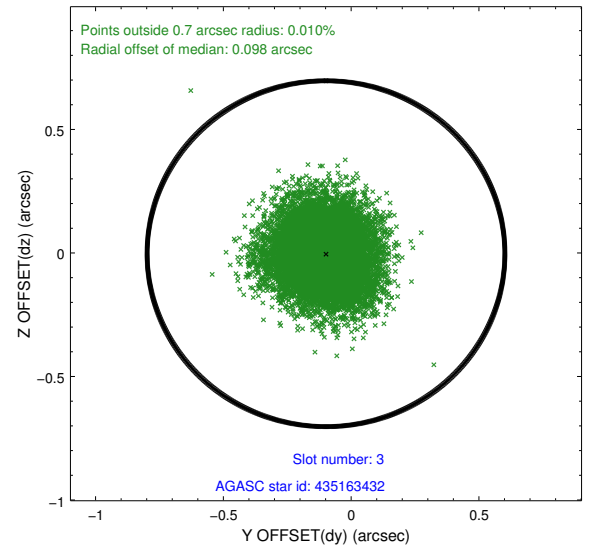
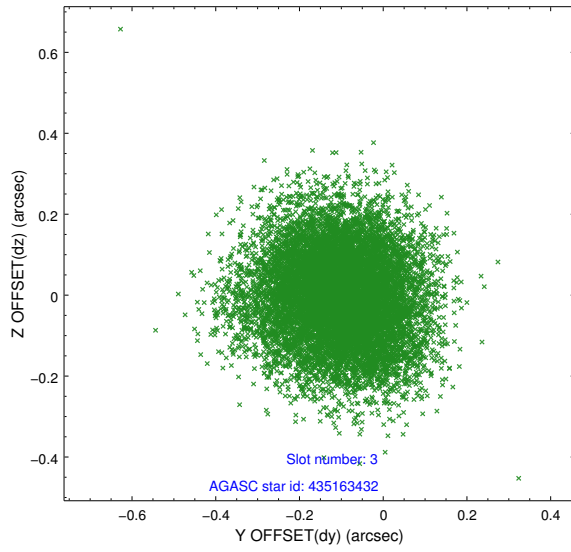


Slot Statistics

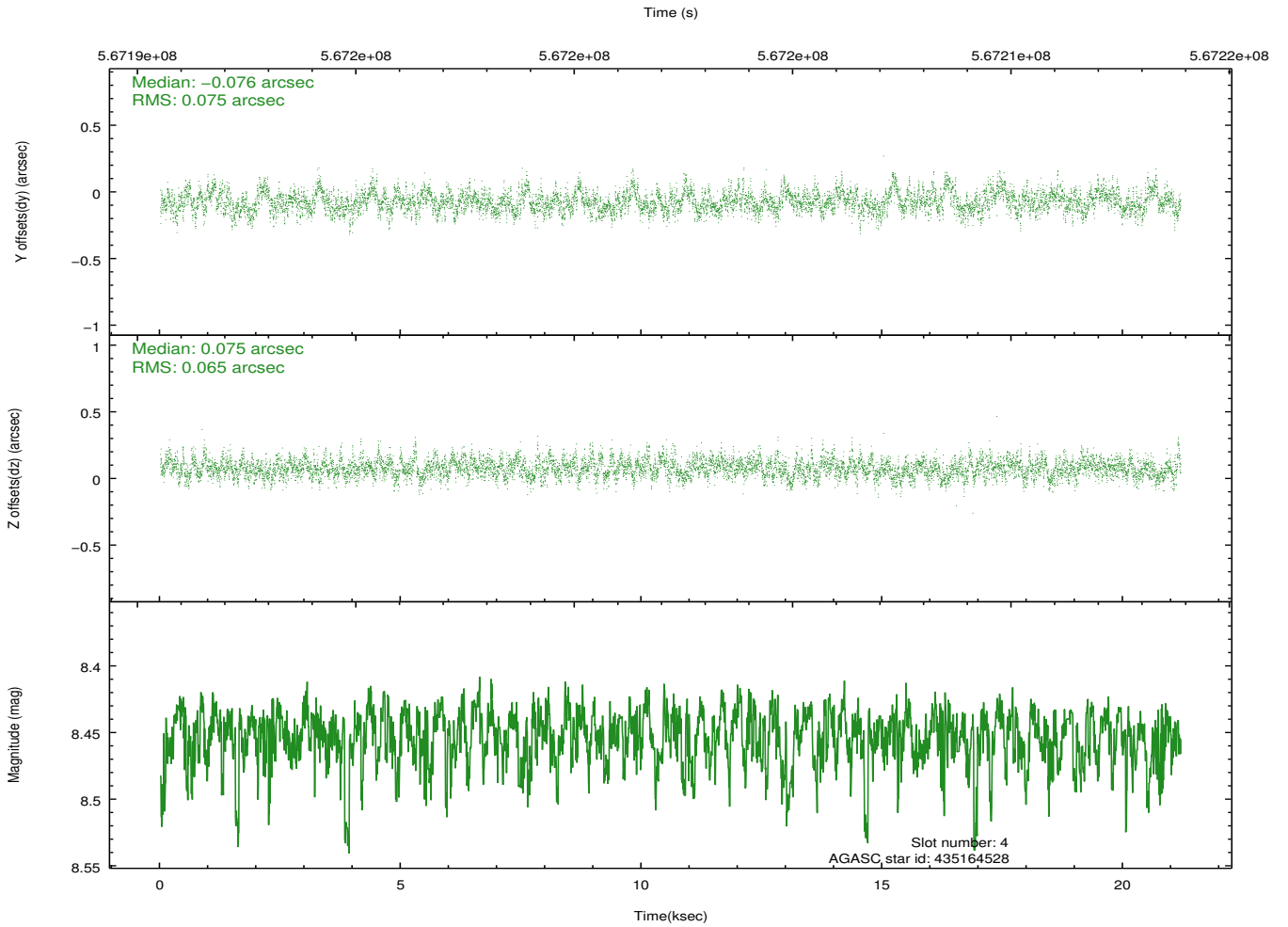
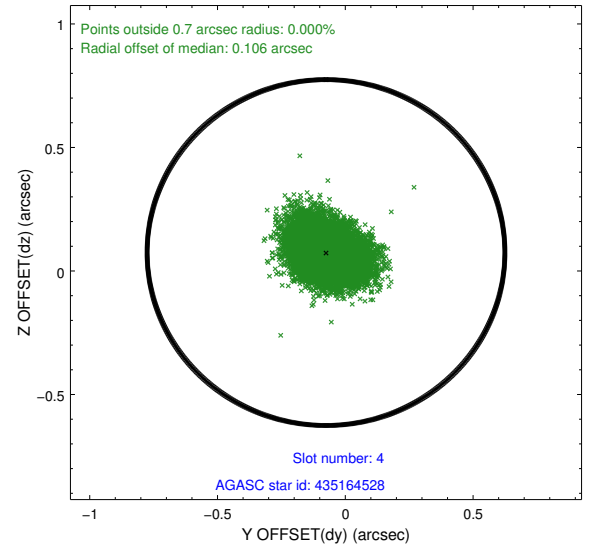
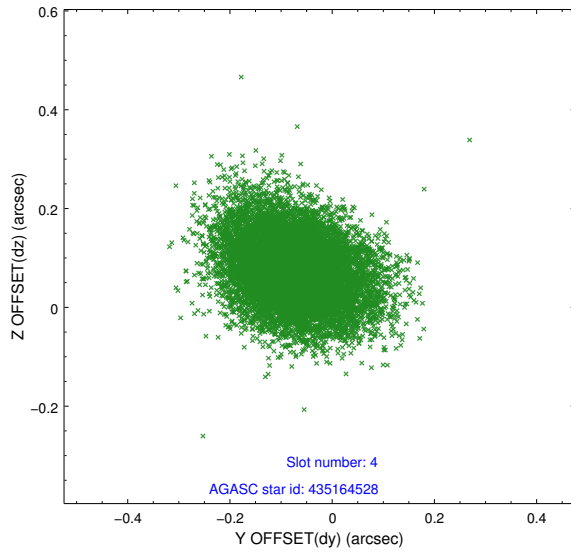
slot	status	used	id	mag	n_pts	med_dy	med_dz	dr1	dr2	ra	dec	mean_y	mean_z
0	FID		HRC-I-1	7.01	5168	-0.160	0.028	0.009	0.014	0.000000	0.000000	-774.75	-1305.16
1	FID		HRC-I-2	7.03	5167	0.345	-0.162	0.009	0.018	0.000000	0.000000	838.24	-1307.13
2	FID		HRC-I-3	7.09	5169	-0.065	0.043	0.009	0.018	0.000000	0.000000	-1203.03	999.16
3	GUIDE	used	435163432	9.19	10332	-0.098	-0.003	0.161	0.258	51.079908	49.221265	2136.06	1075.43
4	GUIDE	used	435164528	8.45	10335	-0.076	0.075	0.105	0.172	52.077428	49.952876	-1262.36	1973.53
5	GUIDE	used	435166216	9.01	10332	0.153	-0.115	0.143	0.234	50.786266	49.398149	1868.83	175.93
6	GUIDE	used	435177608	7.29	10336	-0.118	0.026	0.106	0.175	51.518643	49.745589	-11.05	1152.49
7	GUIDE	used	435178552	8.97	10327	0.145	0.015	0.165	0.264	51.326019	50.075019	-872.16	222.92

2.4 Star Slots

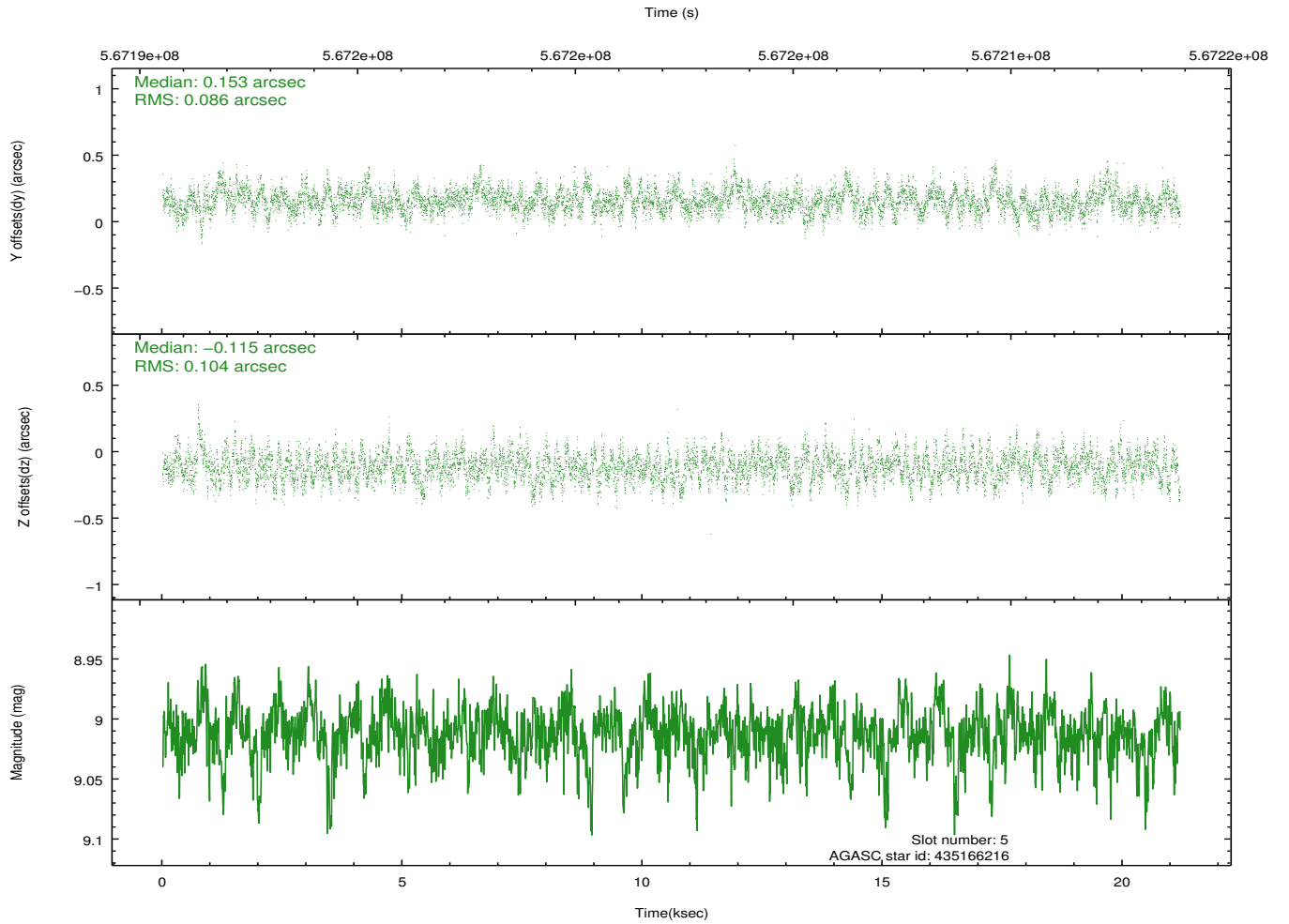
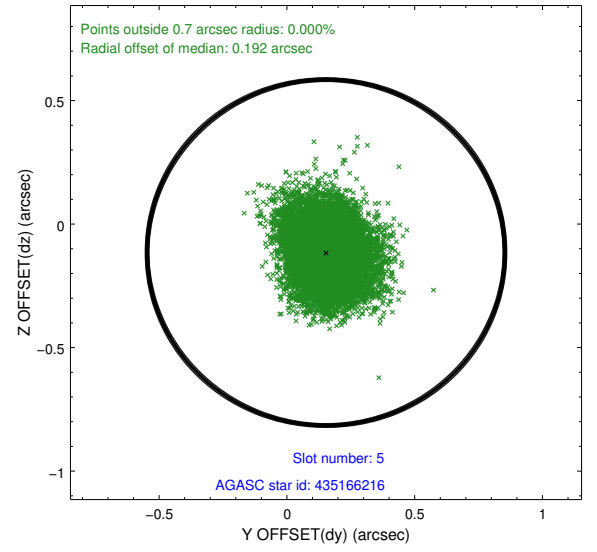
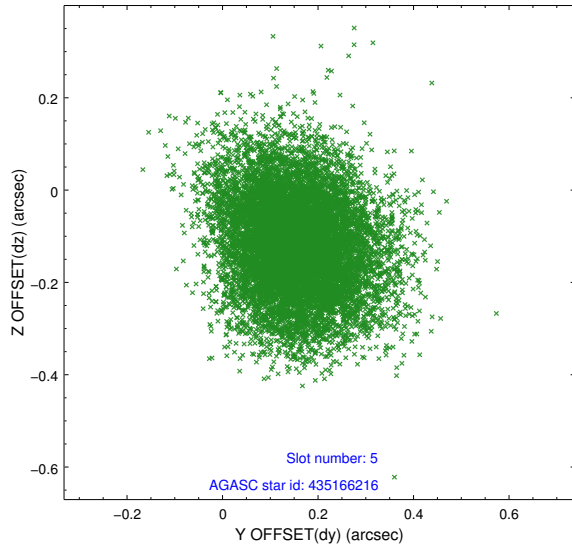
2.4.1 Slot 3



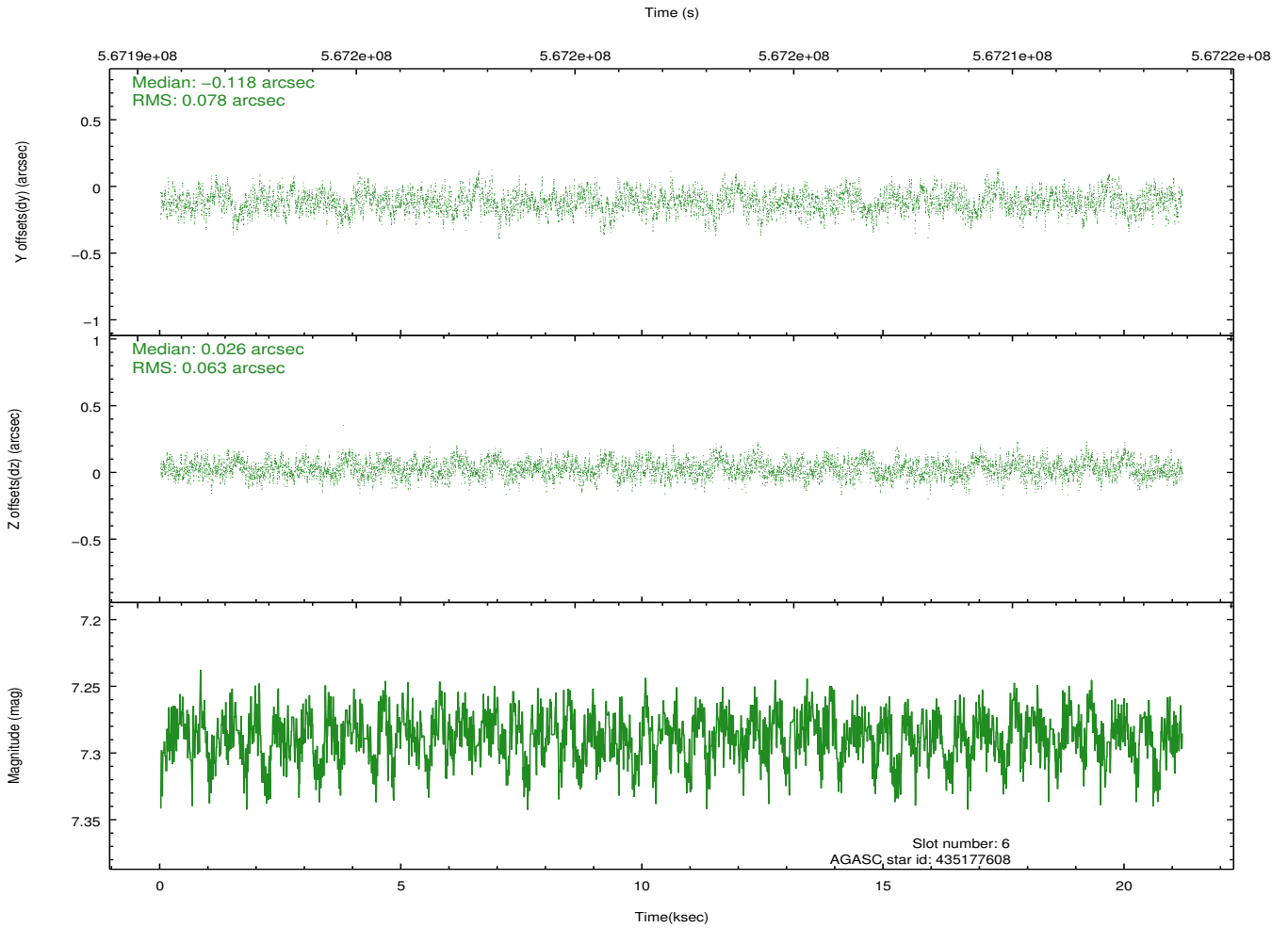
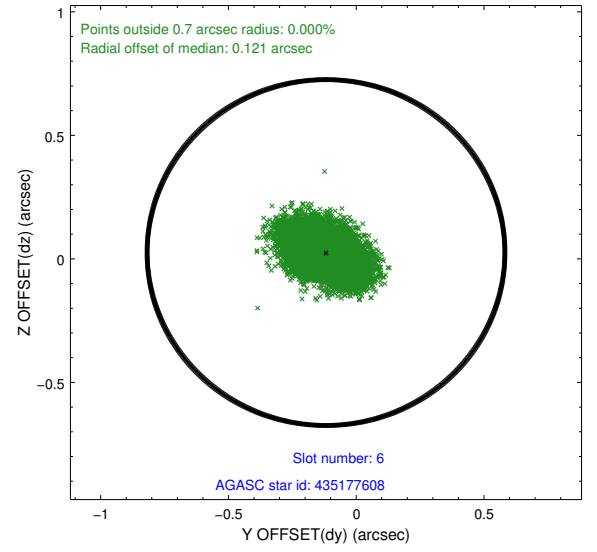
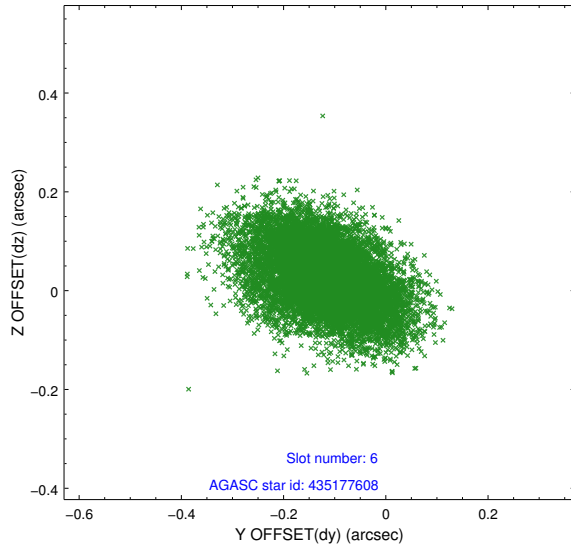
2.4.2 Slot 4



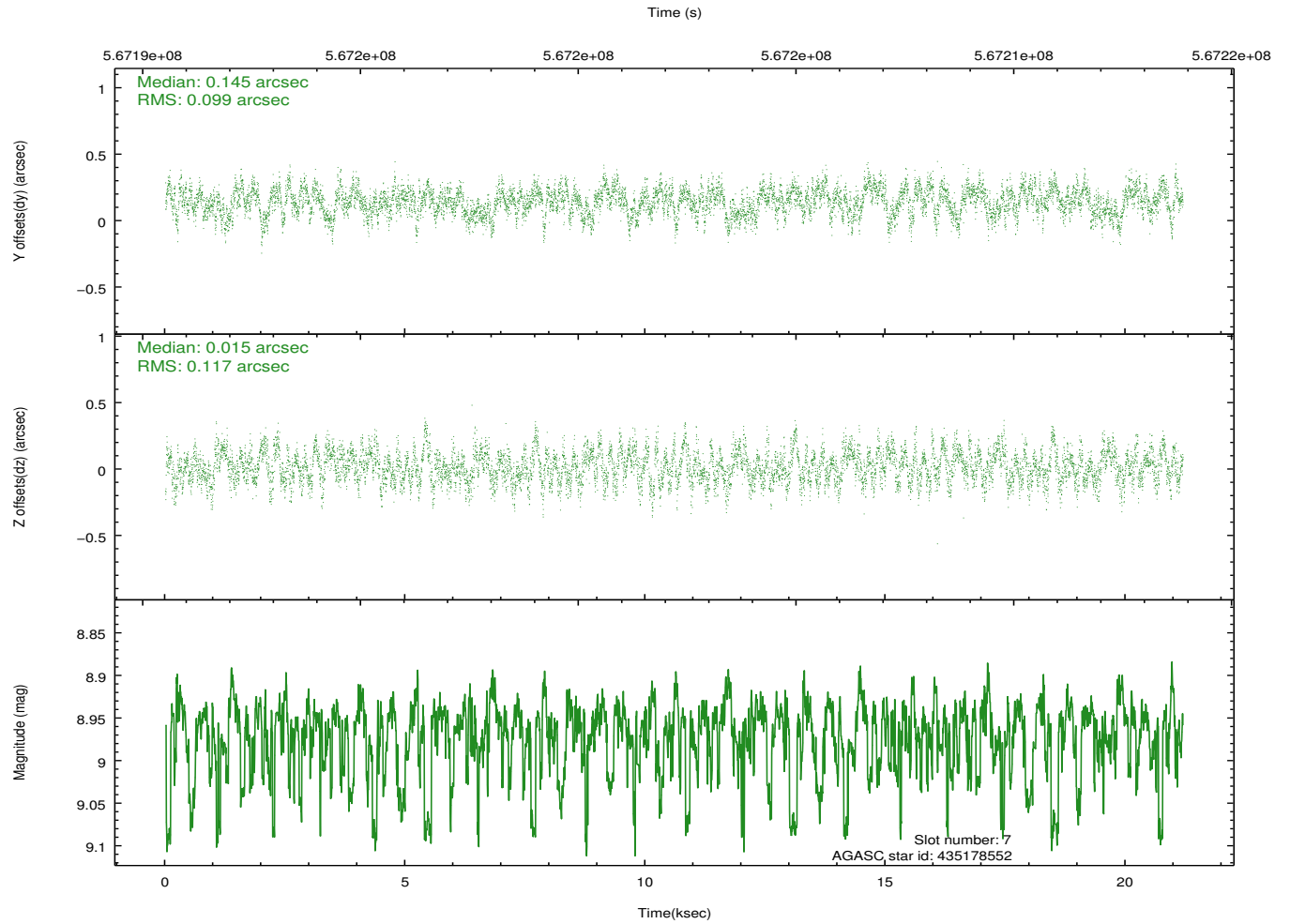
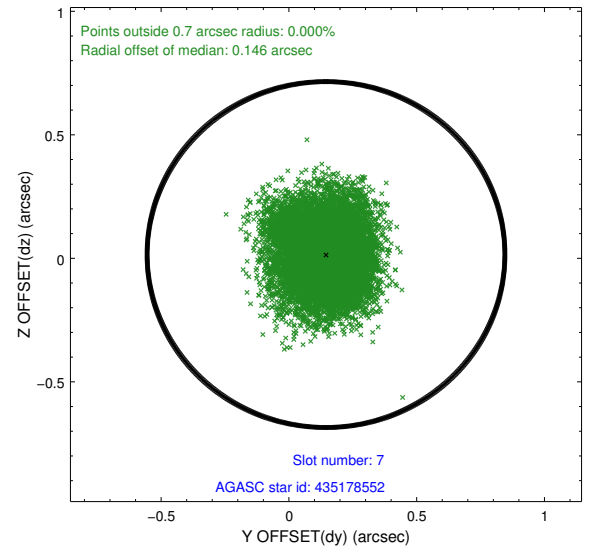
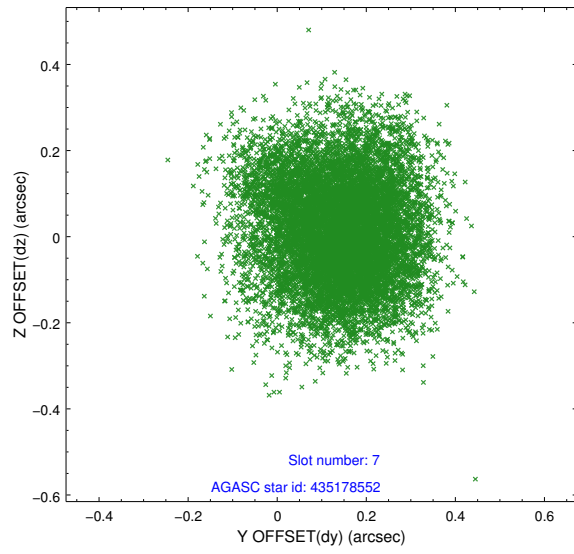
2.4.3 Slot 5



2.4.4 Slot 6

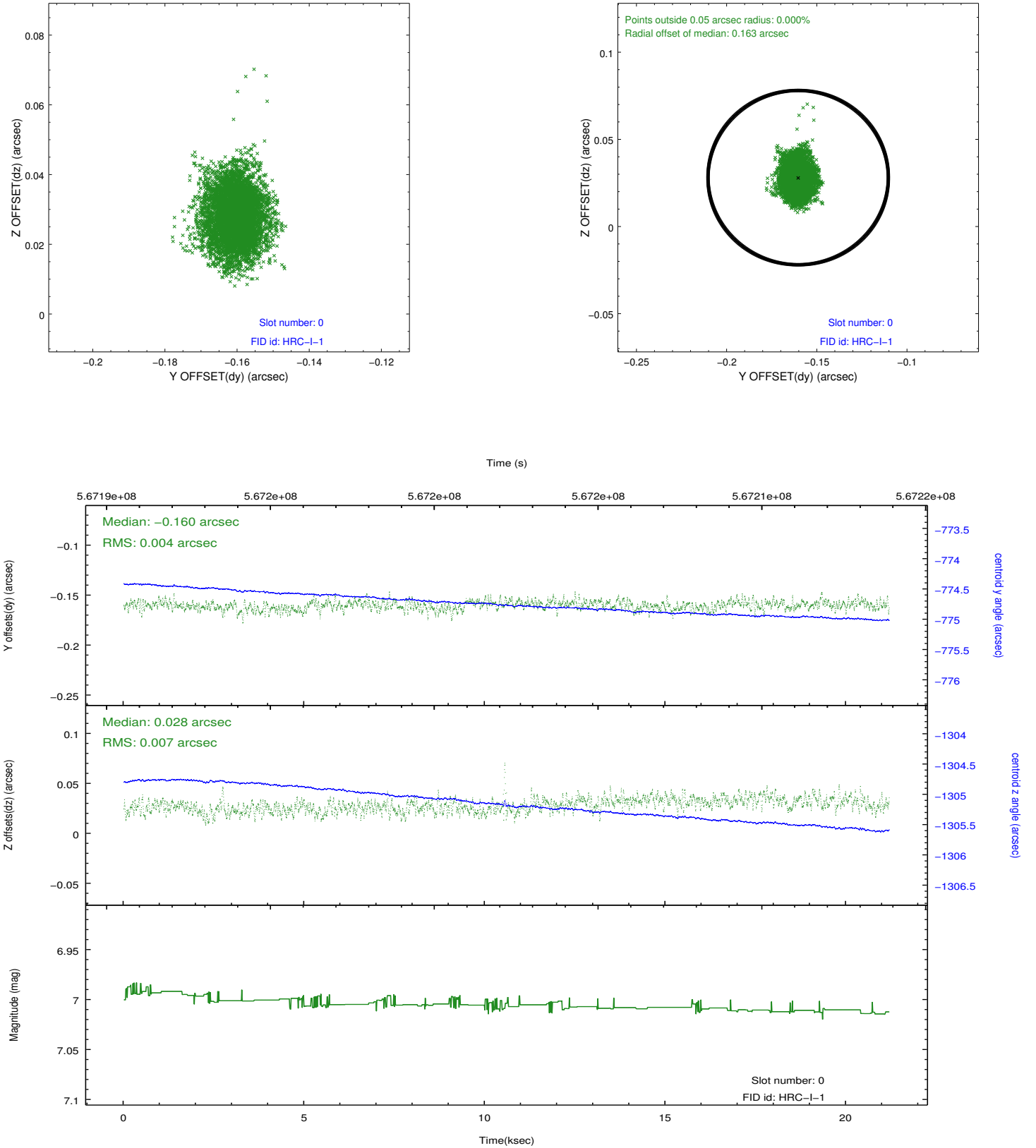


2.4.5 Slot 7

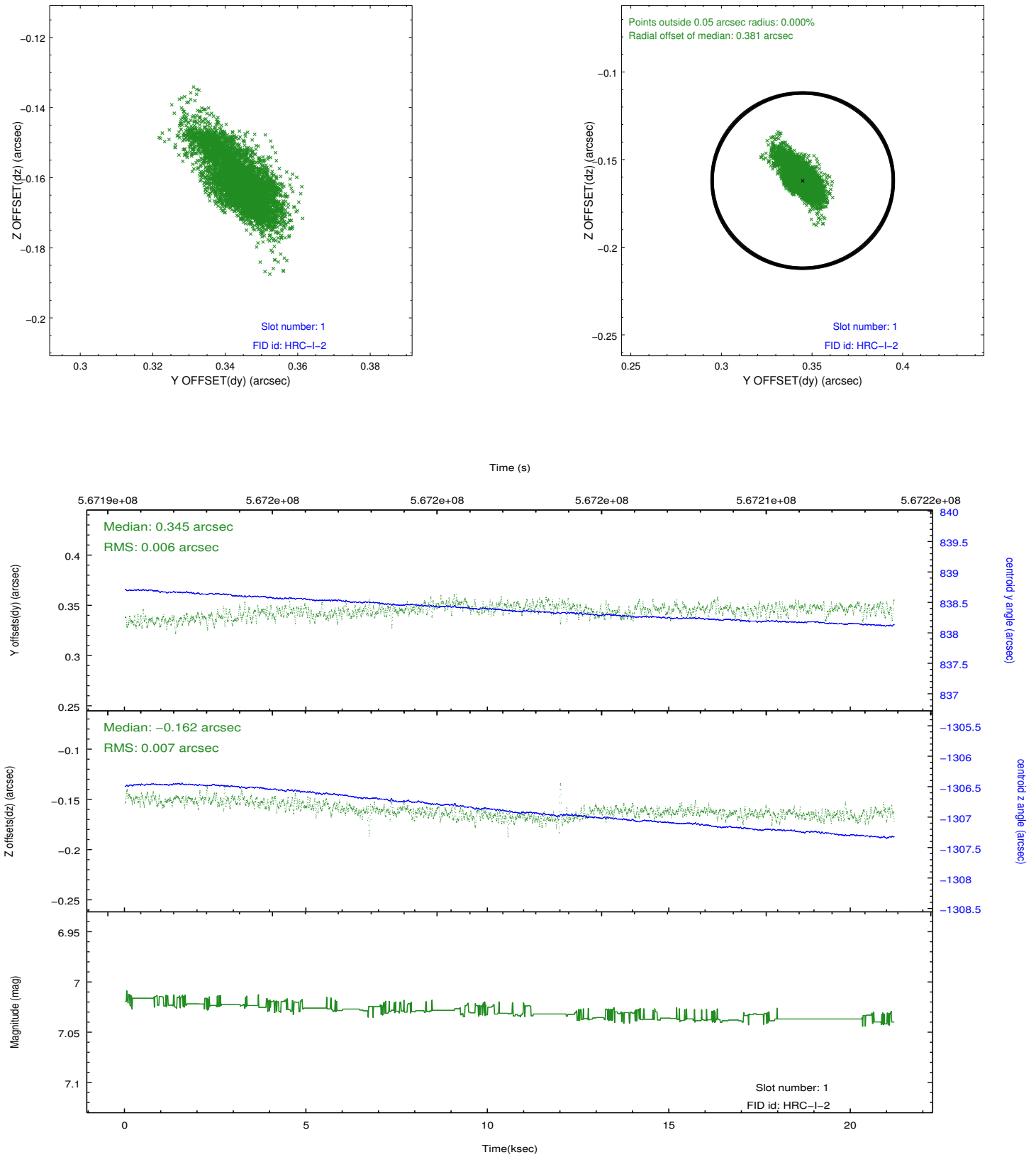


2.5 FID Slots

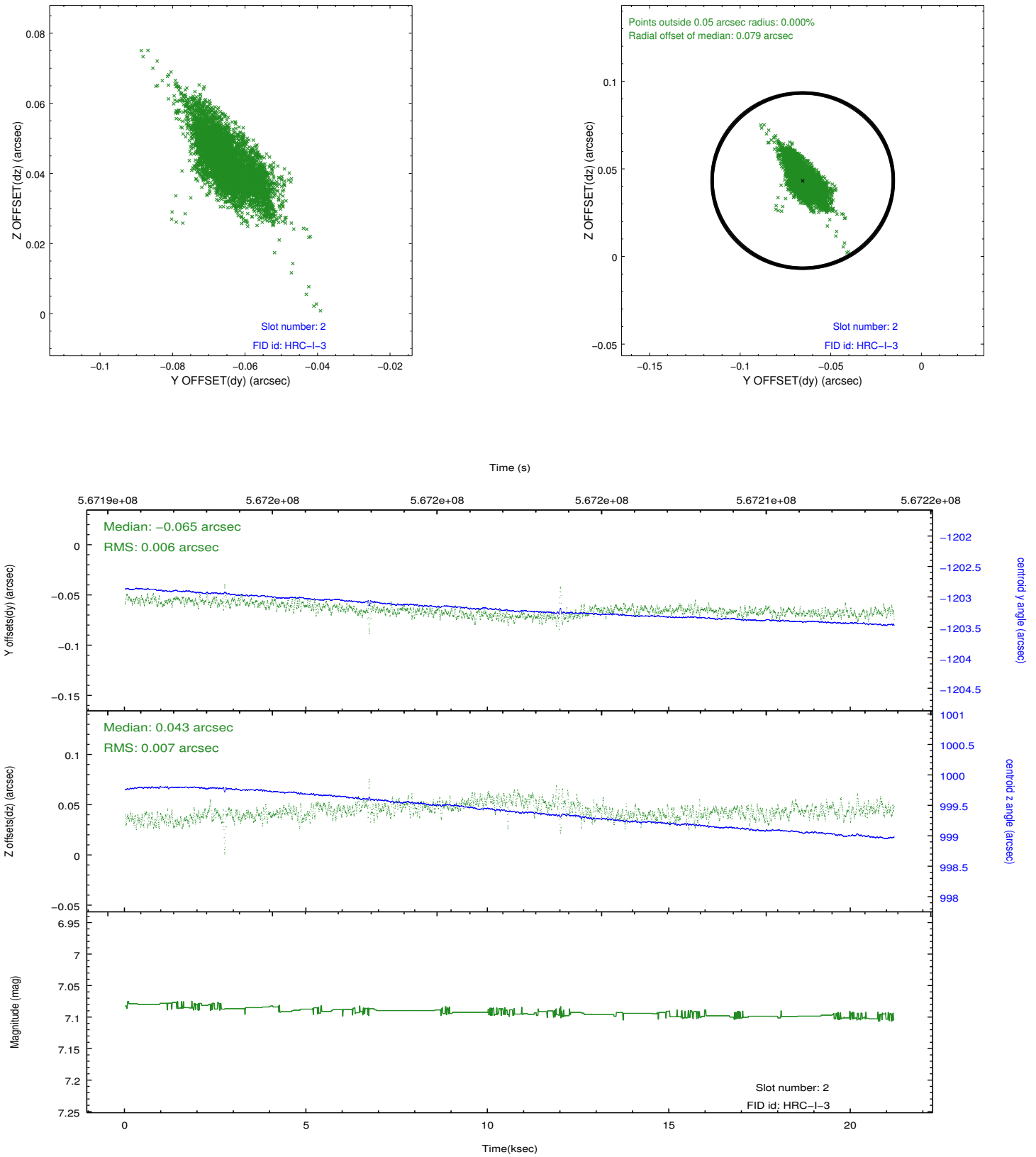
2.5.1 Slot 0



2.5.2 Slot 1



2.5.3 Slot 2



A Summary

A.1 Status

V&V Scientist	Jen Lauer
V&V Date (YYYY-MM-DD)	2015.12.23
V&V Edition	1
V&V Disposition and Status	OK
V&V Charge Time	21.18880120182

A.2 Comments

Joint Proposal: HST