

V&V Reference Report

L2 ASCDS Version : 10.4.3.1

Observation 16679 - L2 Version 1
Chandra X-Ray Center

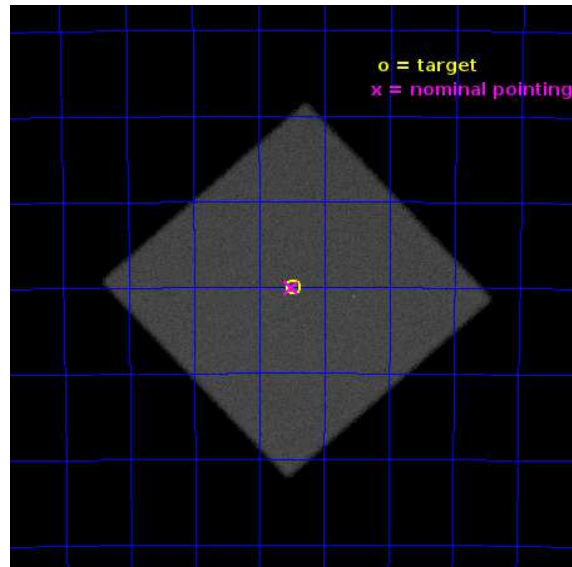
L2 Processing Date : Apr 30 2016

Contents

1	Front	2
2	OBI	3
2.1	OBI	3
2.1.1	Images	3
2.1.2	Parameters	4
2.1.3	Events	4
2.2	Compared Parameters	5
2.3	Aspect	6
2.4	Star Slots	9
2.4.1	Slot 3	9
2.4.2	Slot 4	10
2.4.3	Slot 5	11
2.4.4	Slot 6	12
2.4.5	Slot 7	13
2.5	FID Slots	14
2.5.1	Slot 0	14
2.5.2	Slot 1	15
2.5.3	Slot 2	16
A	Summary	17
A.1	Status	17
A.2	Comments	17

1 Front

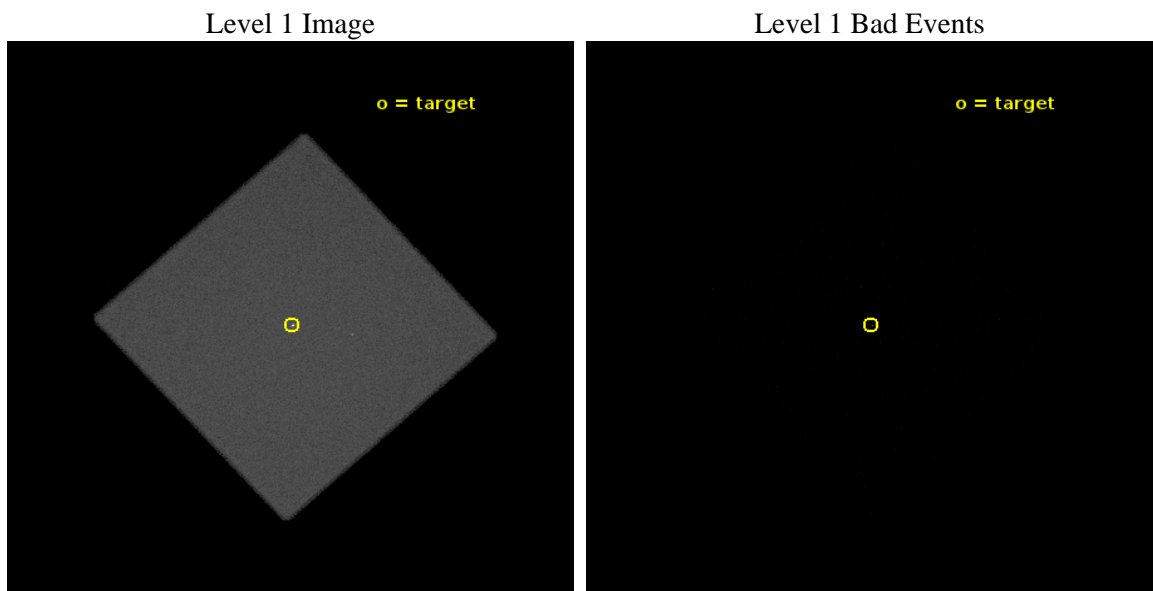
seq_num	201000	Sequence number
obs_id	16679	Observation id
title	Alpha Centauri at a Crossroads	Proposal title
observer	Thomas Ayres	Principal investigator
object	ALPHA CEN	Source name
ra_targ	219.867917	Observer's specified target RA [deg]
dec_targ	-60.832556	Observer's specified target Dec [deg]
ra_nom	219.87602247079	Nominal RA [deg]
dec_nom	-60.833943049749	Nominal Dec [deg]
roll_nom	2.6791141877563	Nominal Roll [deg]
revision	1	Processing version of data
ontime	10138.531829596	[s]
livetime	10032.213380106	Ontime multiplied by DTCOR
l2events	874471	Number of level 2 events



2 OBI

2.1 OBI

2.1.1 Images



2.1.2 Parameters

obi_num	0	Obi number	sched_exp_time	10000.000000	[s] Scheduled observation exposure time
ascdsver	10.4.3.1	Processing system revision	ontime	10138.531829596	[s]
caldbver	4.7.1	 	l1events	1308333	Number of level 1 events
date	2016-04-30T20:06:01	Date and time of file creation			
revision	1	Processing version of data			

2.1.3 Events

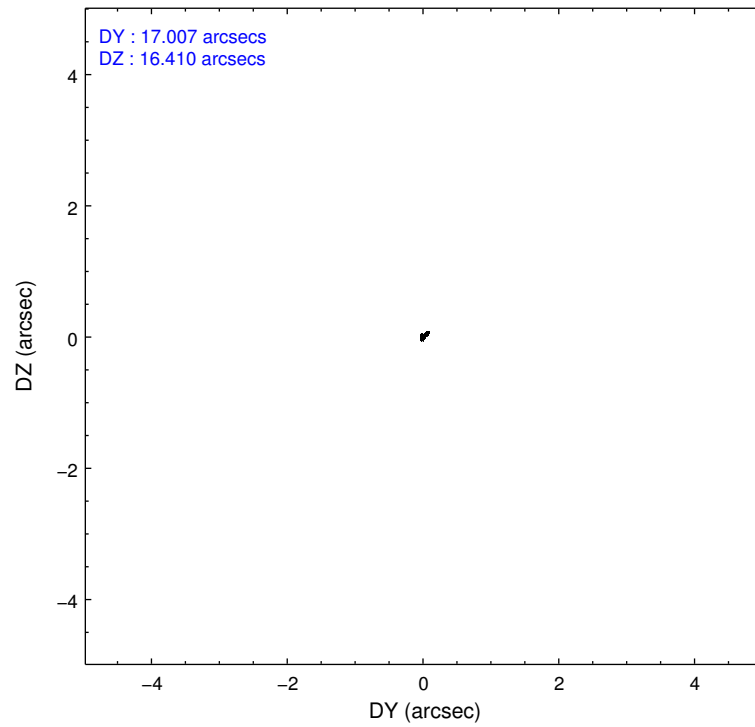
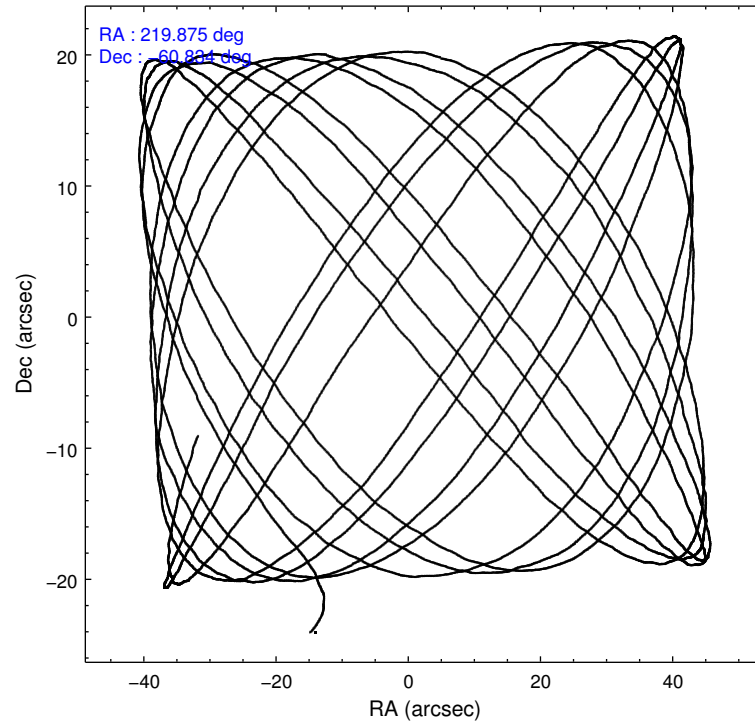
Level 1 Events

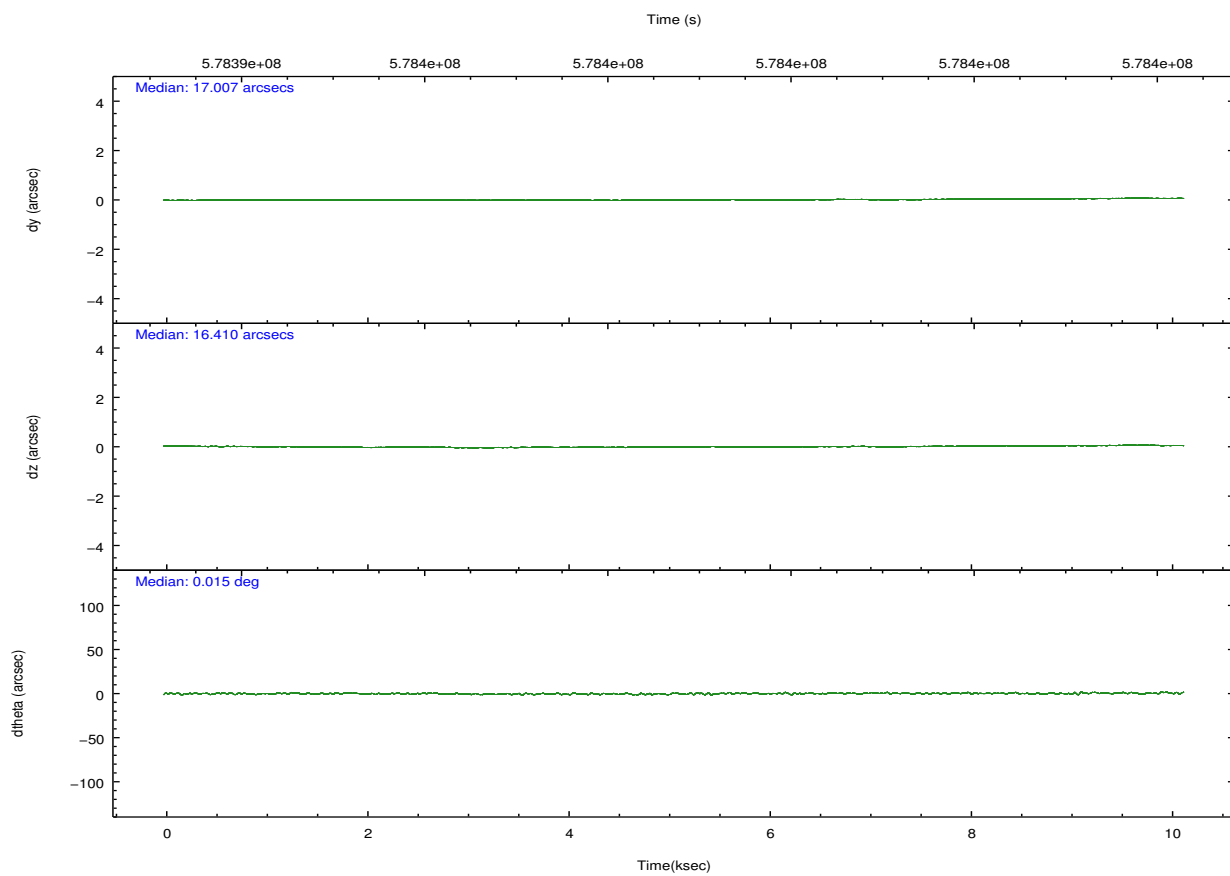
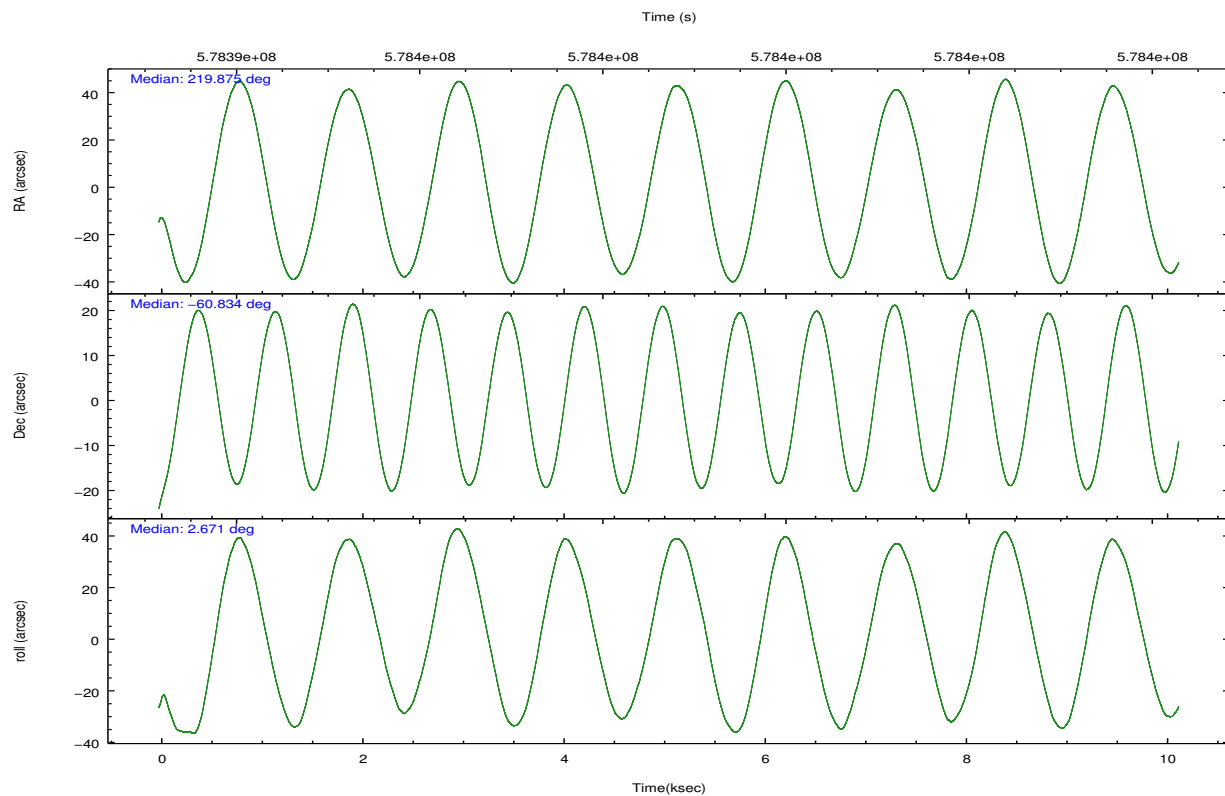
	segment 0
level 1 events	1308333
rejected events	146050
rejected %	11%

2.2 Compared Parameters

Parameter	Planned	Actual	Parameter	Planned	Actual
Instrument	HRC	HRC	Obspar format version number	7	7
Detector	HRC-I	HRC-I	Obspar file type	PREDICTED	ACTUAL
Grating	NONE	NONE	Obspar update status	NONE	UPDATED
Data mode	OBSERVING	OBSERVING			
Observation mode	POINTING	POINTING			
[deg] Pointing RA	219.829828	219.8760224707913			
[deg] Pointing Dec	-60.849129	-60.83394304974939			
[deg] Pointing Roll	2.734274	2.679114187756301			
[mm] SIM focus pos	-1.040293	-1.038866356238299			
[mm] SIM defocus	0	0.001426264420575141			
[mm] SIM translation stage pos	126.985494	126.9829799899862			
[mm] SIM translation stage offset	0	0.002508901615314585			
[s] Observation start time (MET)	578393774.184000	578392373.18032			
Observation start date	2016-04-30T08:55:06	2016-04-30T08:32:53			
[s] Observation end time (MET)	578403774.184000	578404441.01851			
Observation end date	2016-04-30T11:41:46	2016-04-30T11:54:01			

2.3 Aspect



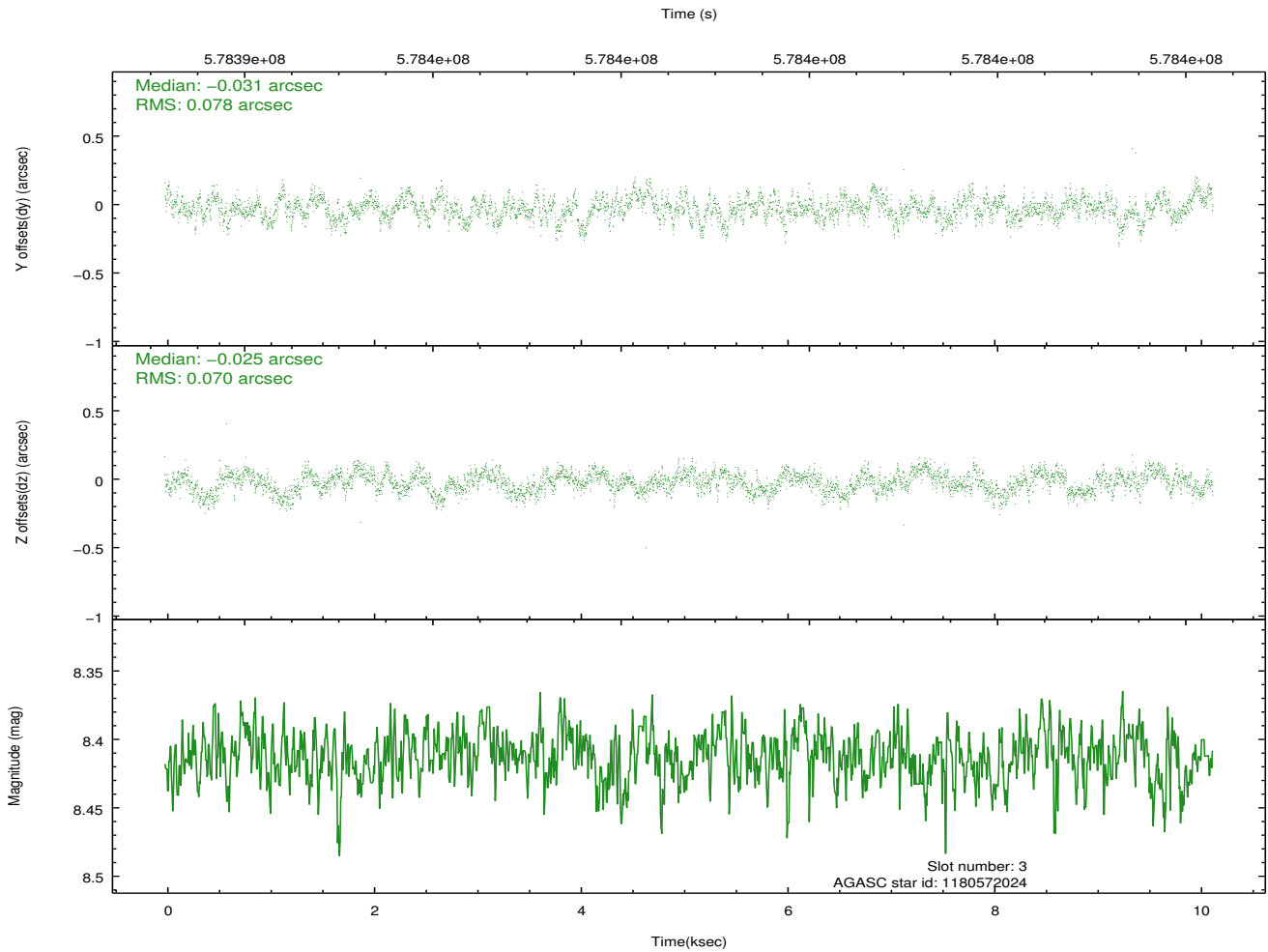
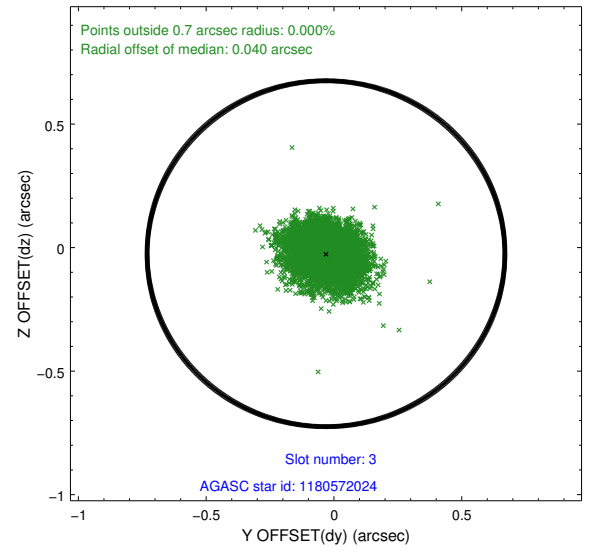
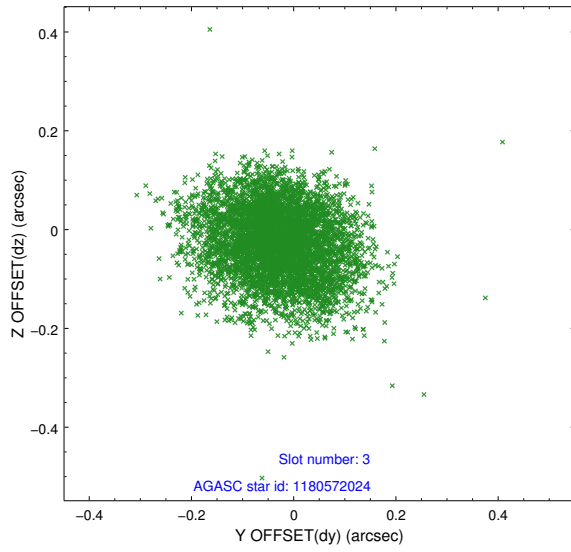


Slot Statistics

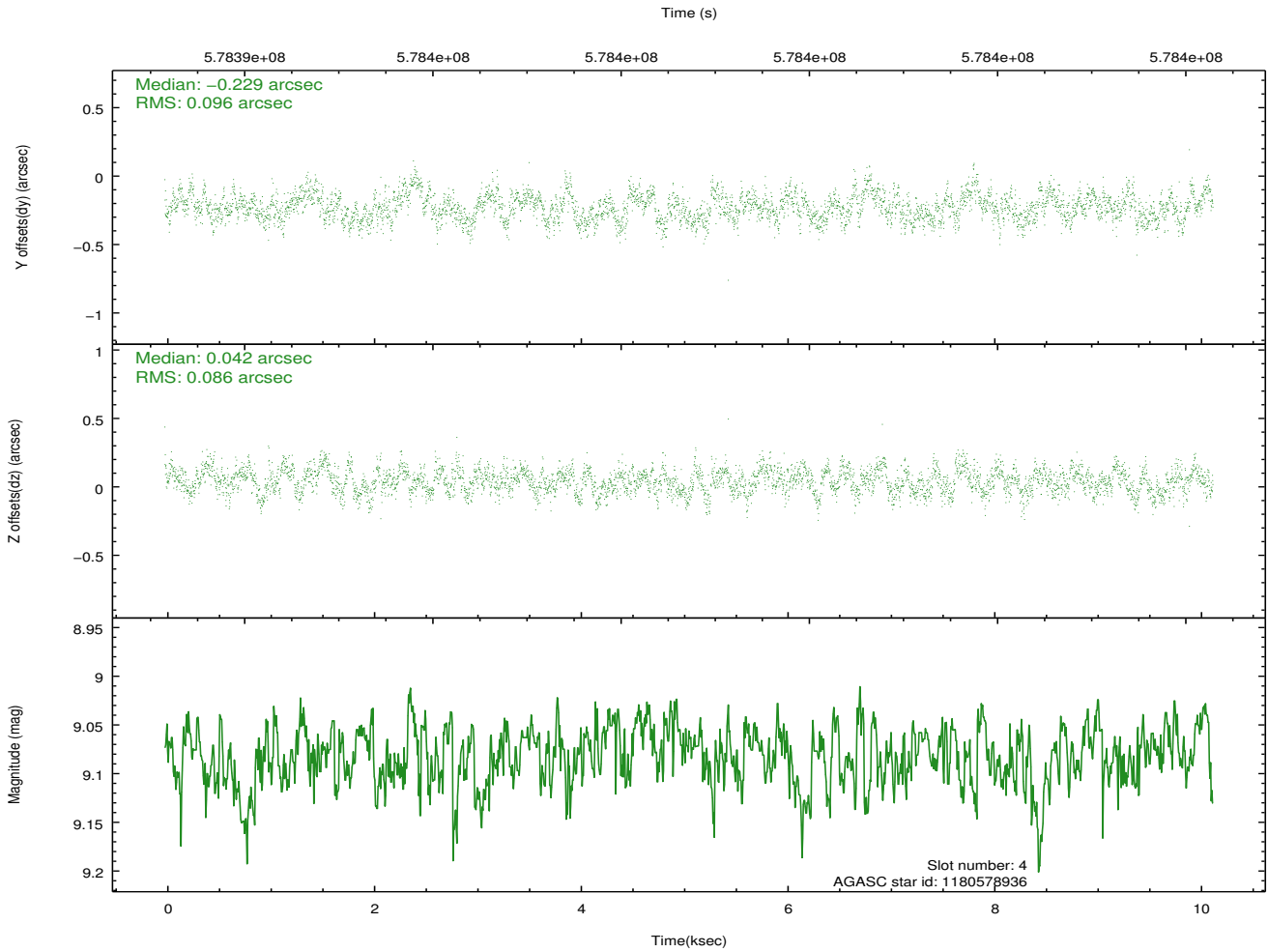
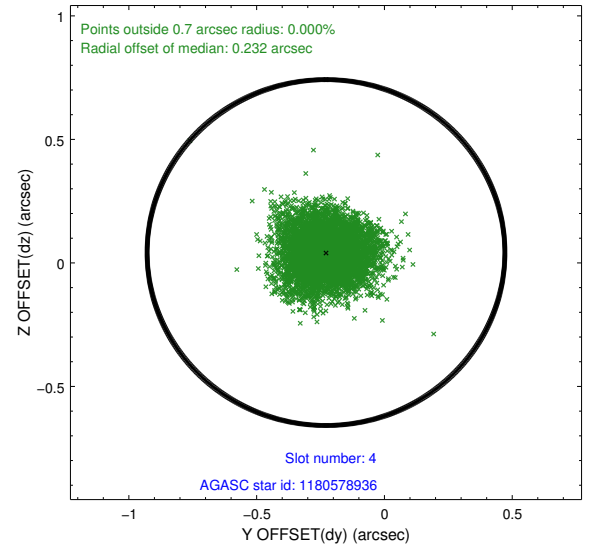
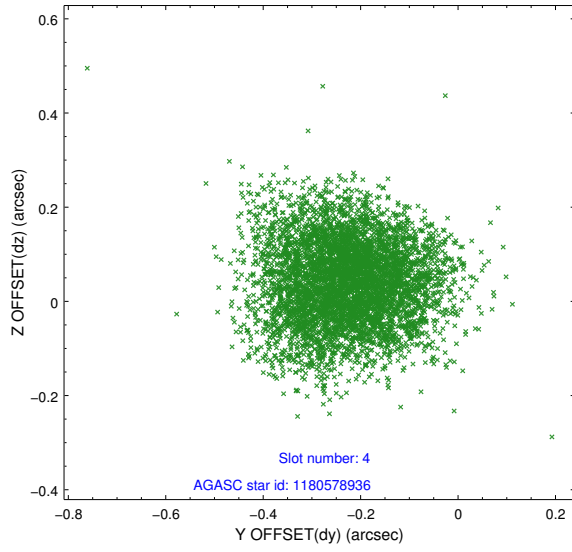
slot	status	used	id	mag	n_pts	med_dy	med_dz	dr1	dr2	ra	dec	mean_y	mean_z
0	FID		HRC-I-1	7.03	2472	-0.286	-0.164	0.007	0.011	0.000000	0.000000	-773.31	-1304.61
1	FID		HRC-I-2	7.04	2473	0.241	-0.068	0.009	0.014	0.000000	0.000000	839.53	-1306.79
2	FID		HRC-I-4	7.04	2473	0.161	0.140	0.007	0.012	0.000000	0.000000	1270.53	997.10
3	GUIDE	used	1180572024	8.41	4946	-0.031	-0.025	0.111	0.177	220.930377	-60.981487	1897.09	-583.20
4	GUIDE	used	1180578936	9.08	4945	-0.229	0.042	0.138	0.218	220.919358	-61.155393	1837.90	-1206.81
5	GUIDE	used	1180589152	9.27	4945	0.271	0.486	0.183	0.303	219.760705	-61.382926	-208.95	-1913.29
6	GUIDE	used	1180612104	8.97	4941	-0.120	-0.306	0.109	0.180	220.502279	-60.631704	1223.55	718.96
7	GUIDE	used	1180607792	9.24	4943	0.096	-0.200	0.127	0.208	218.783899	-60.204433	-1757.98	2392.78

2.4 Star Slots

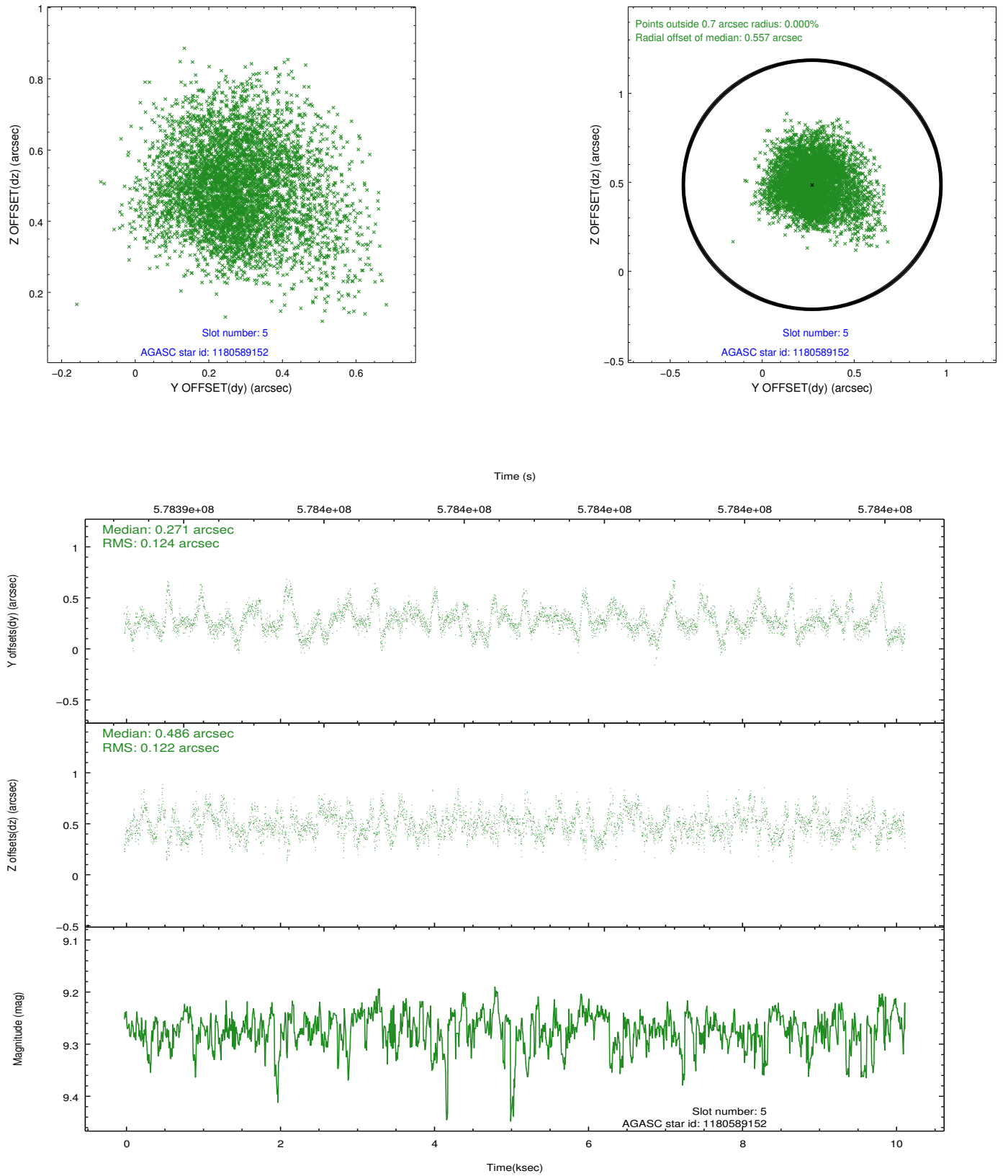
2.4.1 Slot 3



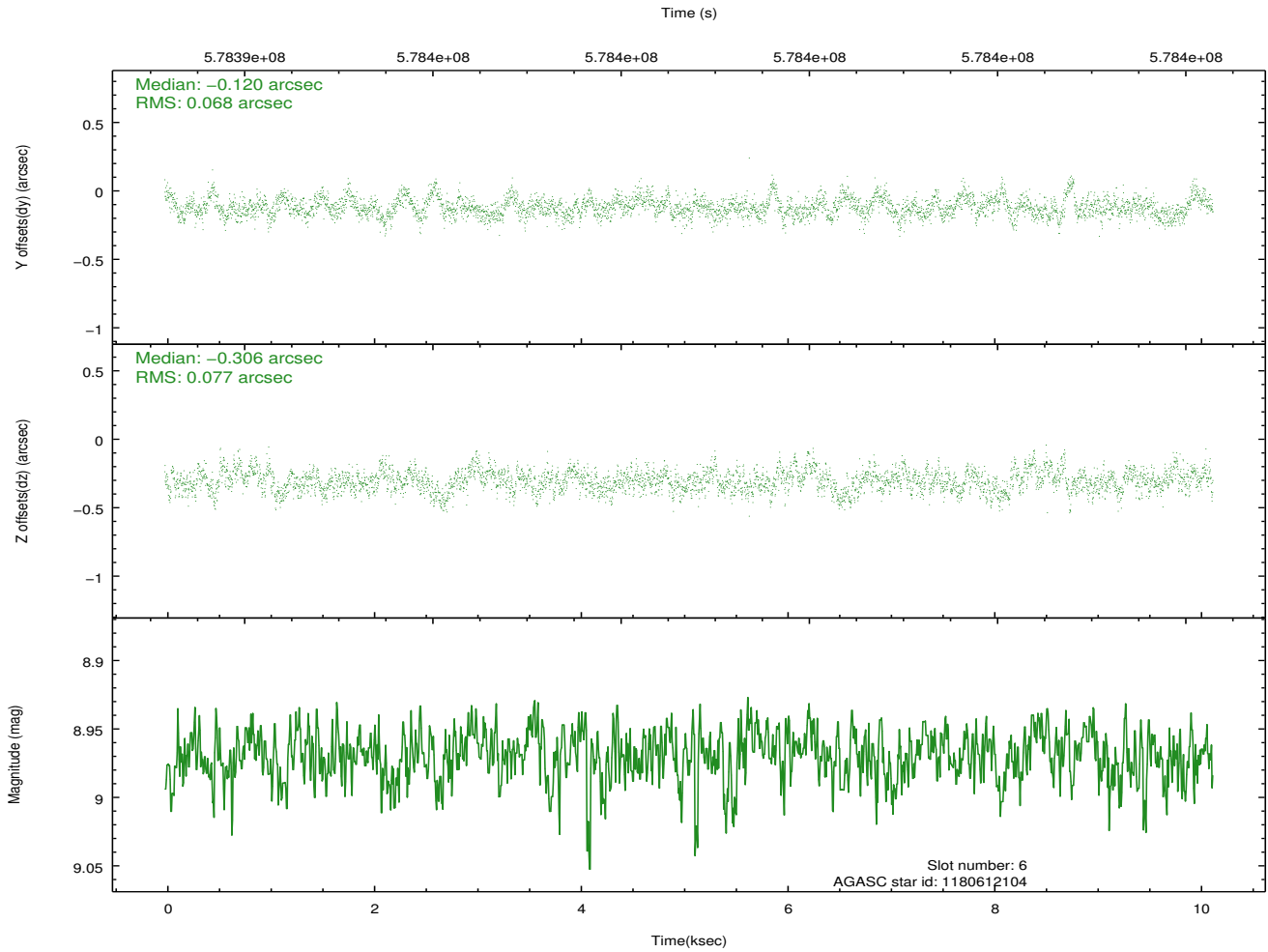
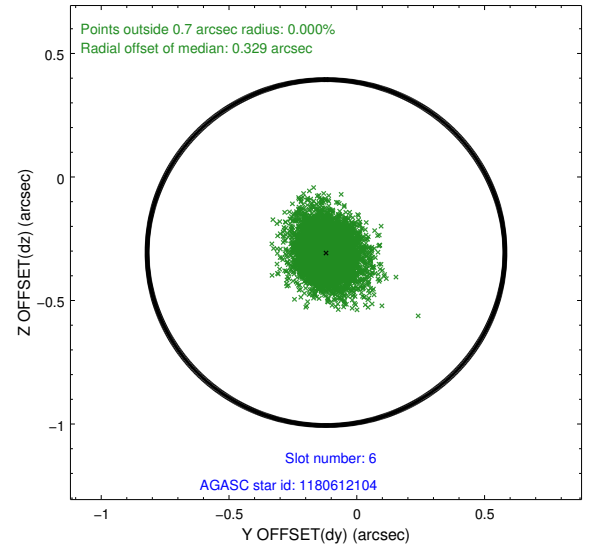
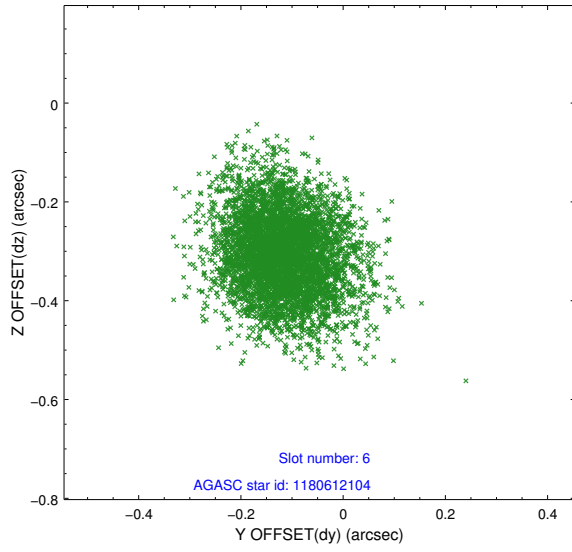
2.4.2 Slot 4



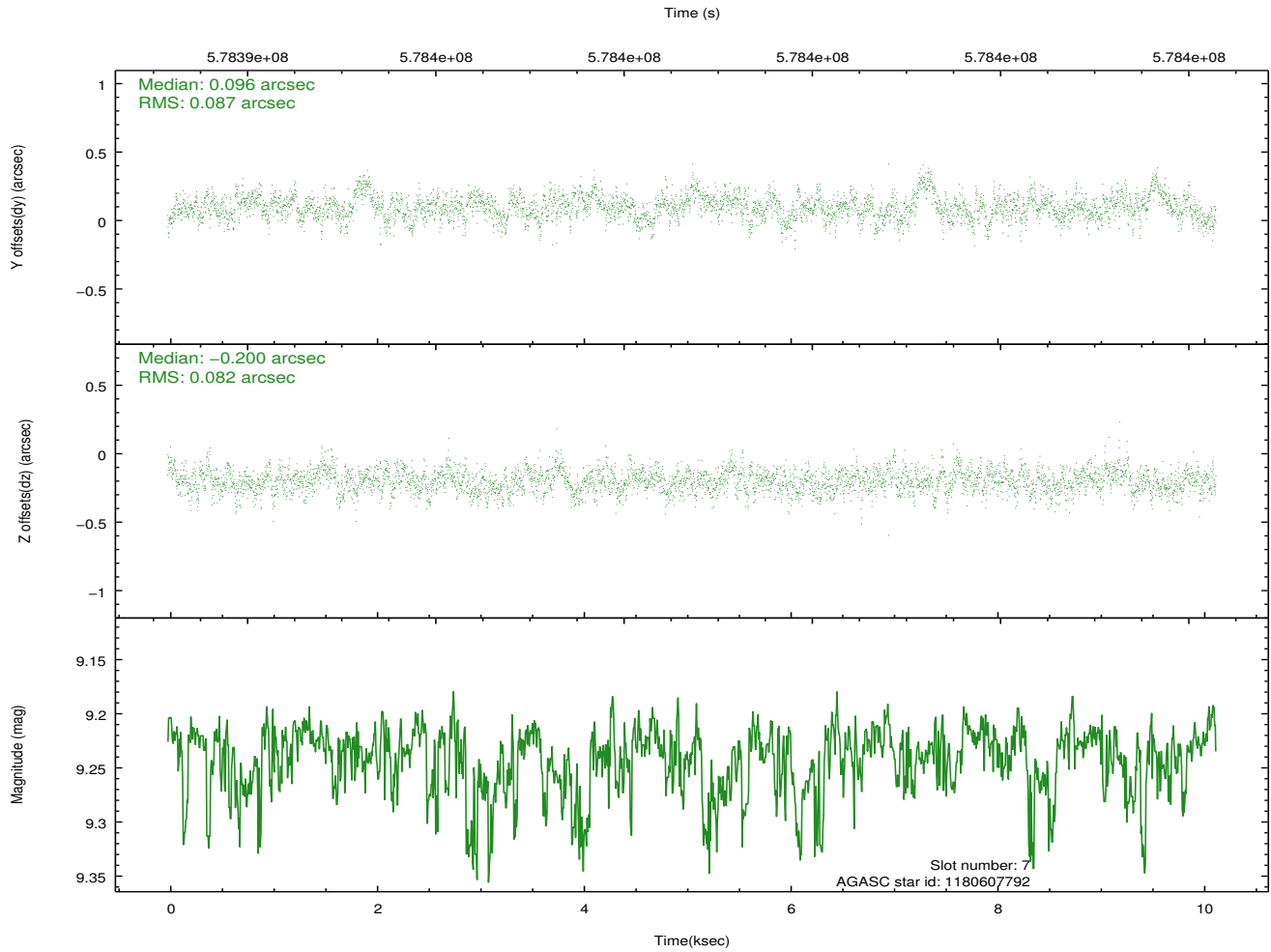
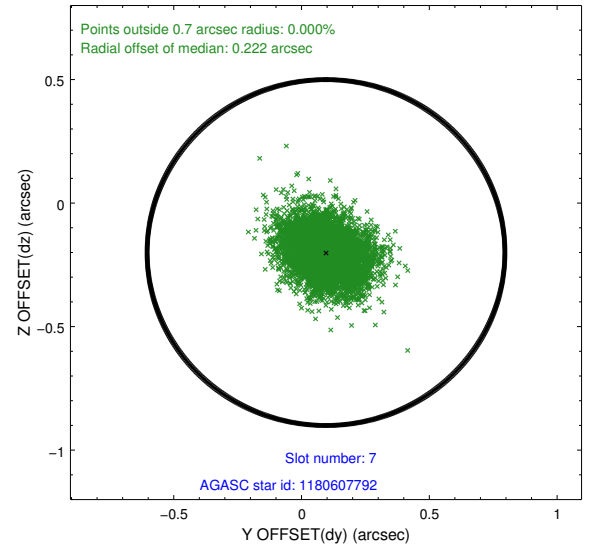
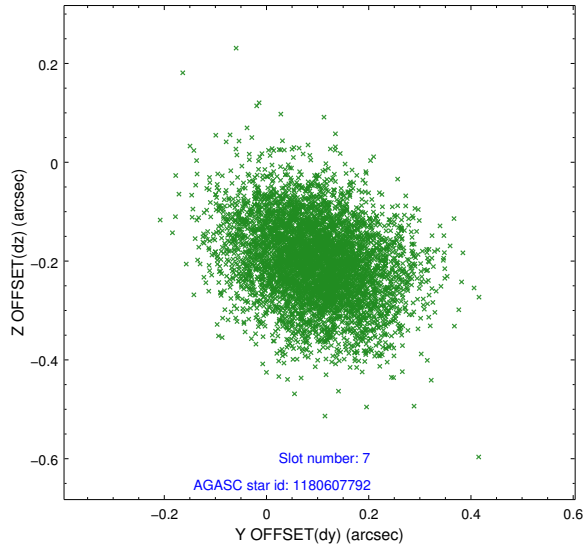
2.4.3 Slot 5



2.4.4 Slot 6

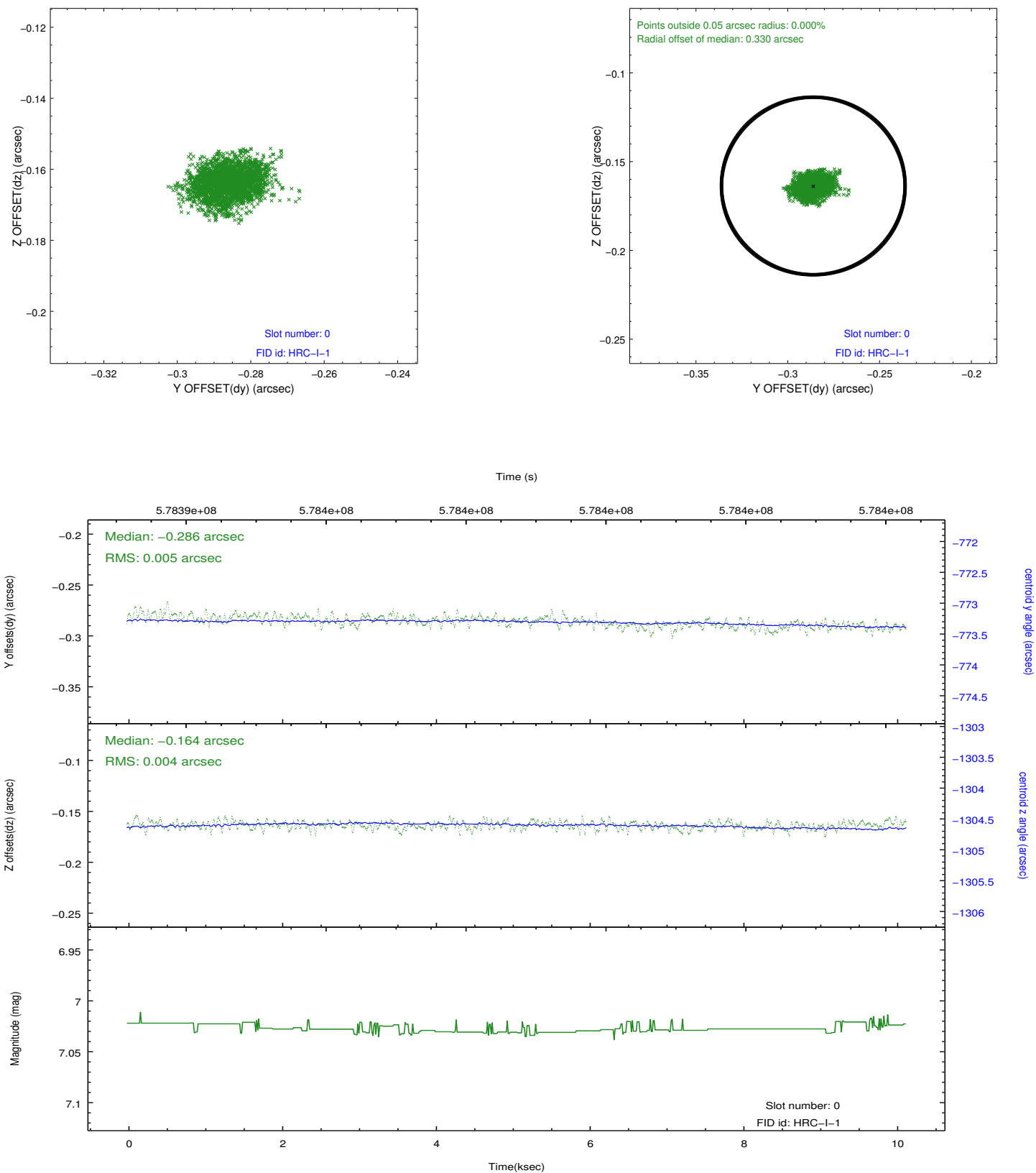


2.4.5 Slot 7

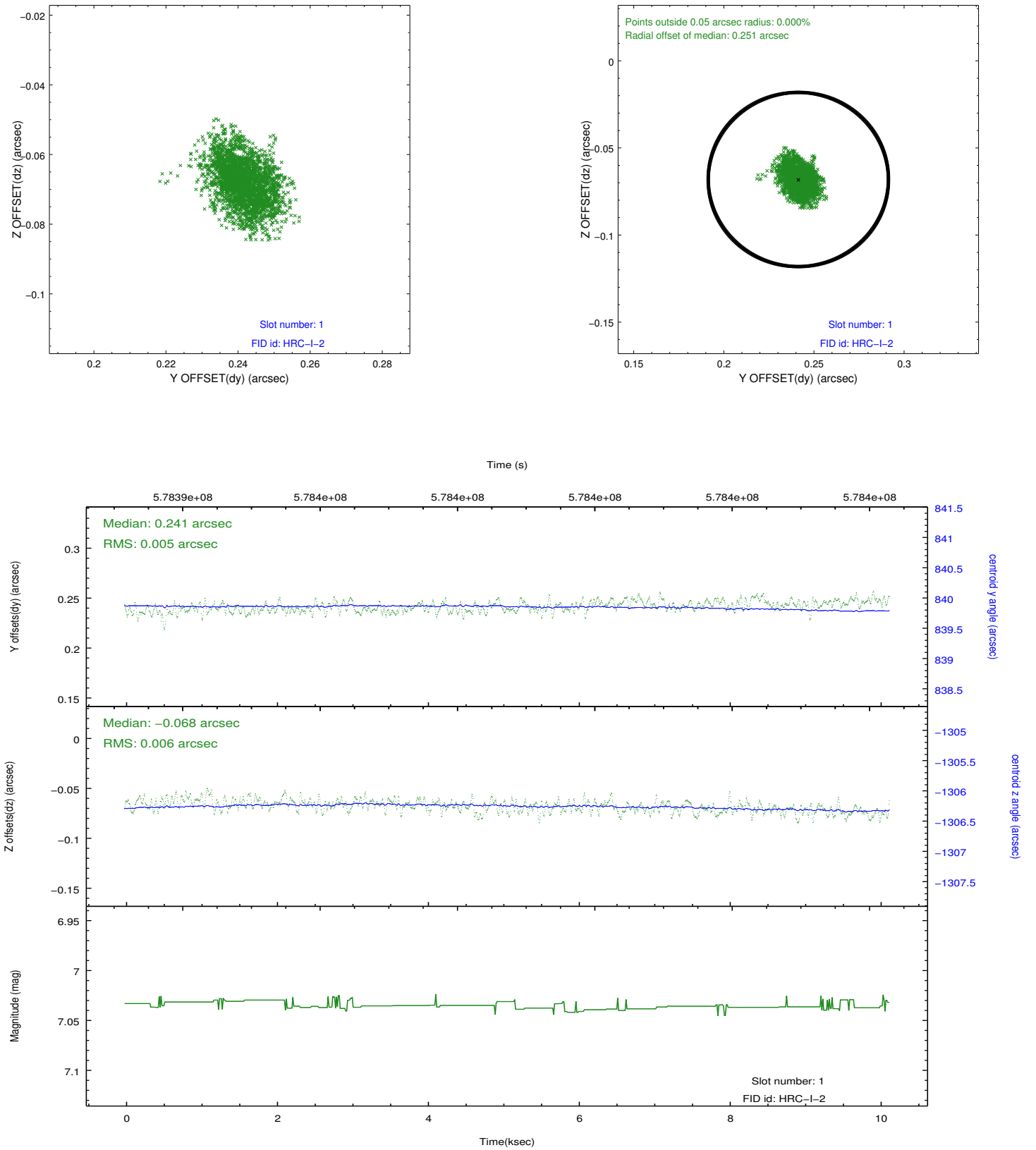


2.5 FID Slots

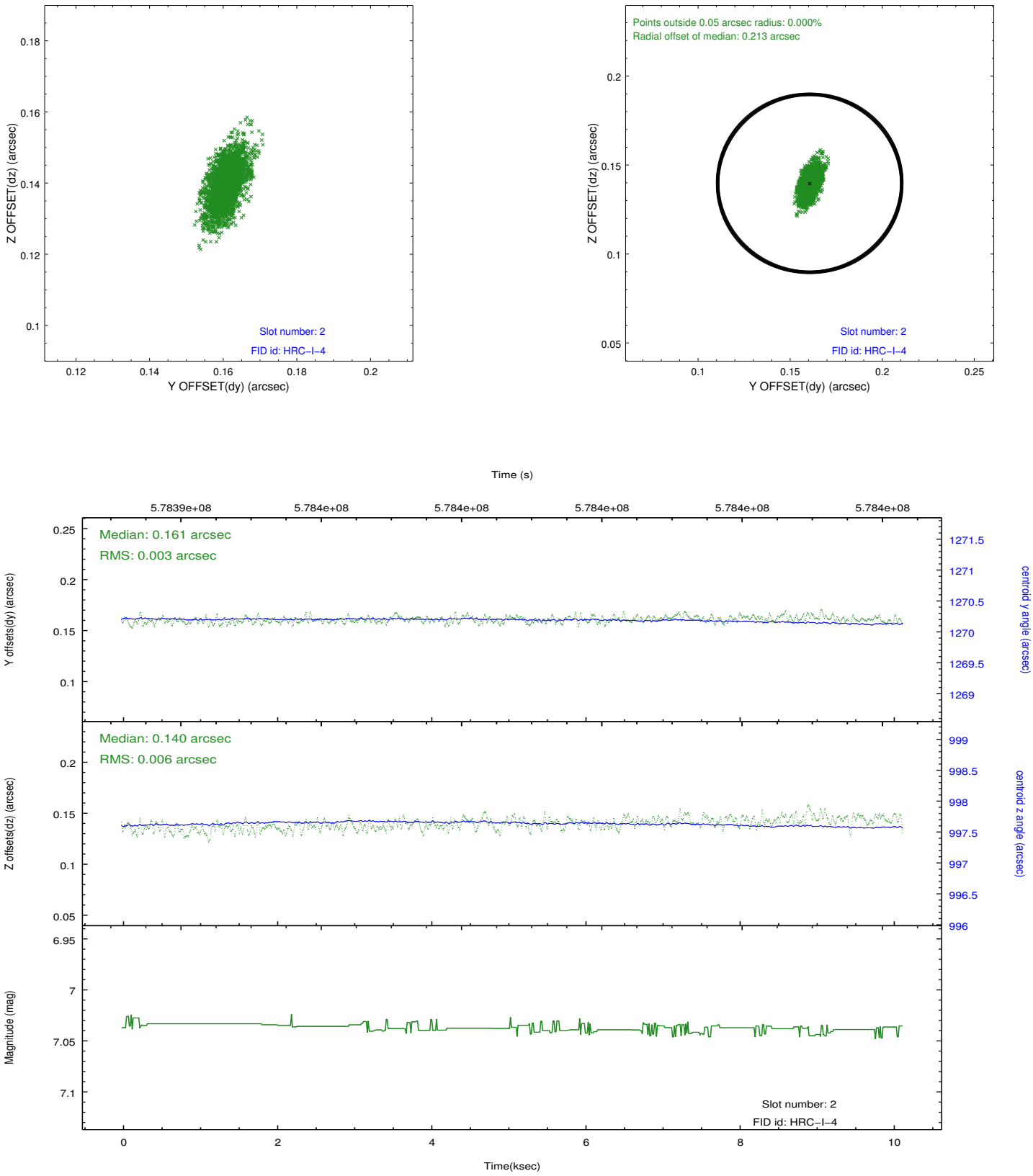
2.5.1 Slot 0



2.5.2 Slot 1



2.5.3 Slot 2



A Summary

A.1 Status

V&V Scientist	Joy Nichols
V&V Date (YYYY-MM-DD)	2016.05.02
V&V Edition	1
V&V Disposition and Status	OK
V&V Charge Time	10.138531829596

A.2 Comments