

V&V Reference Report

L2 ASCDS Version : 10.3.3

Observation 17656 - L2 Version 1
Chandra X-Ray Center

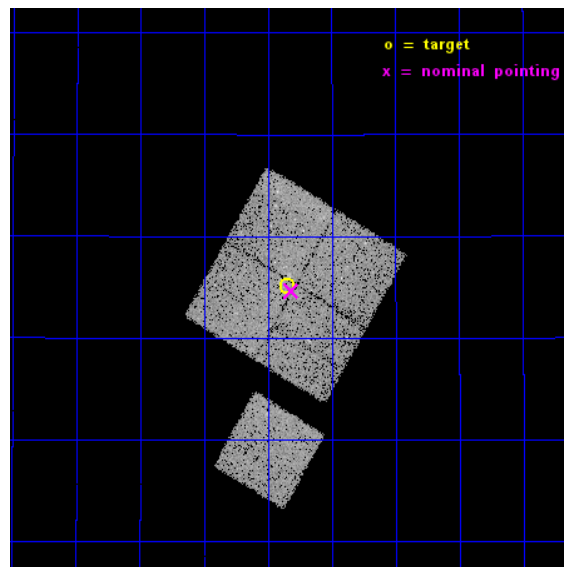
L2 Processing Date : May 16 2015

Contents

1	Front	2
2	OBI	3
2.1	OBI	3
2.1.1	Images	3
2.1.2	Bias	3
2.1.3	Parameters	4
2.1.4	Events	4
2.2	Compared Parameters	5
2.3	Aspect	6
2.4	Star Slots	9
2.4.1	Slot 3	9
2.4.2	Slot 4	10
2.4.3	Slot 5	11
2.4.4	Slot 6	12
2.4.5	Slot 7	13
2.5	FID Slots	14
2.5.1	Slot 0	14
2.5.2	Slot 1	15
2.5.3	Slot 2	16
A	Summary	17
A.1	Status	17
A.2	Comments	17

1 Front

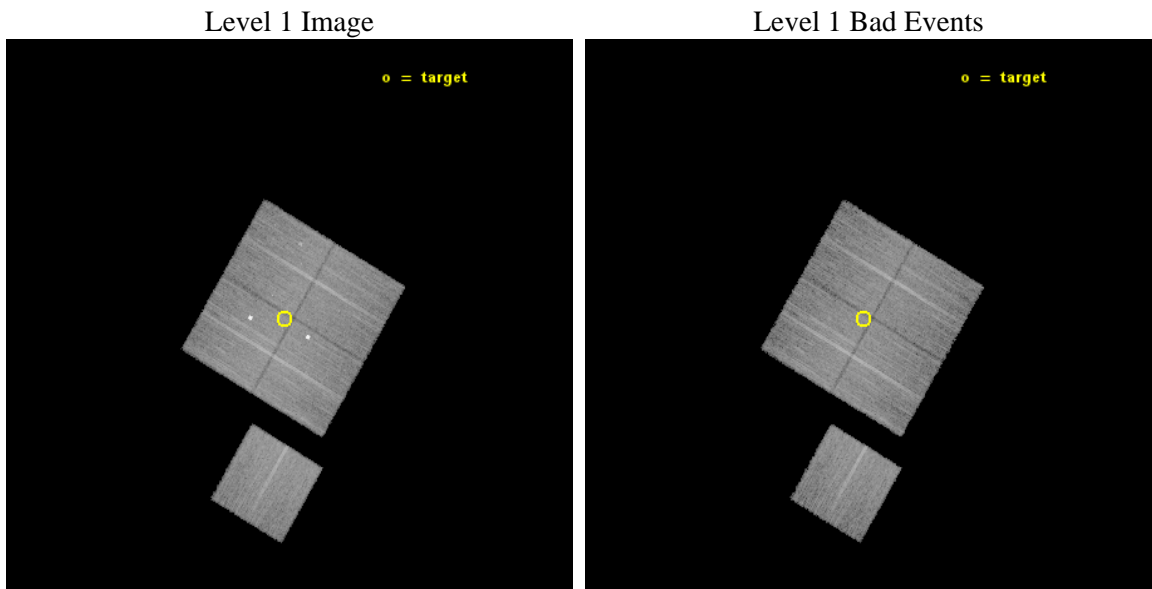
seq_num	801501	Sequence number
obs_id	17656	Observation id
title	Chandra mapping of the cosmic web converging on the virialization region of Abell 1795	Proposal title
observer	Dr Alexey Vikhlinin	Principal investigator
object	Abell 1795 outskirts	Source name
dtcycle	0	
cycle	P	events from which exps? Prim/Second/Both
ra_targ	207.461113	Observer's specified target RA [deg]
dec_targ	27.085142	Observer's specified target Dec [deg]
ra_nom	207.45381595033	Nominal RA [deg]
dec_nom	27.077523066107	Nominal Dec [deg]
roll_nom	210.41201675572	Nominal Roll [deg]
revision	1	Processing version of data
ontime	22582.284307957	Sum of GTIs [s]
livetime	22287.230138637	Livetime [s]
ontime0	22582.161188006	Sum of GTIs [s]
ontime1	22582.20222795	Sum of GTIs [s]
ontime2	22582.243268013	Sum of GTIs [s]
ontime3	22582.284307957	Sum of GTIs [s]
ontime6	22582.120147943	Sum of GTIs [s]
l2events	55487	Number of level 2 events



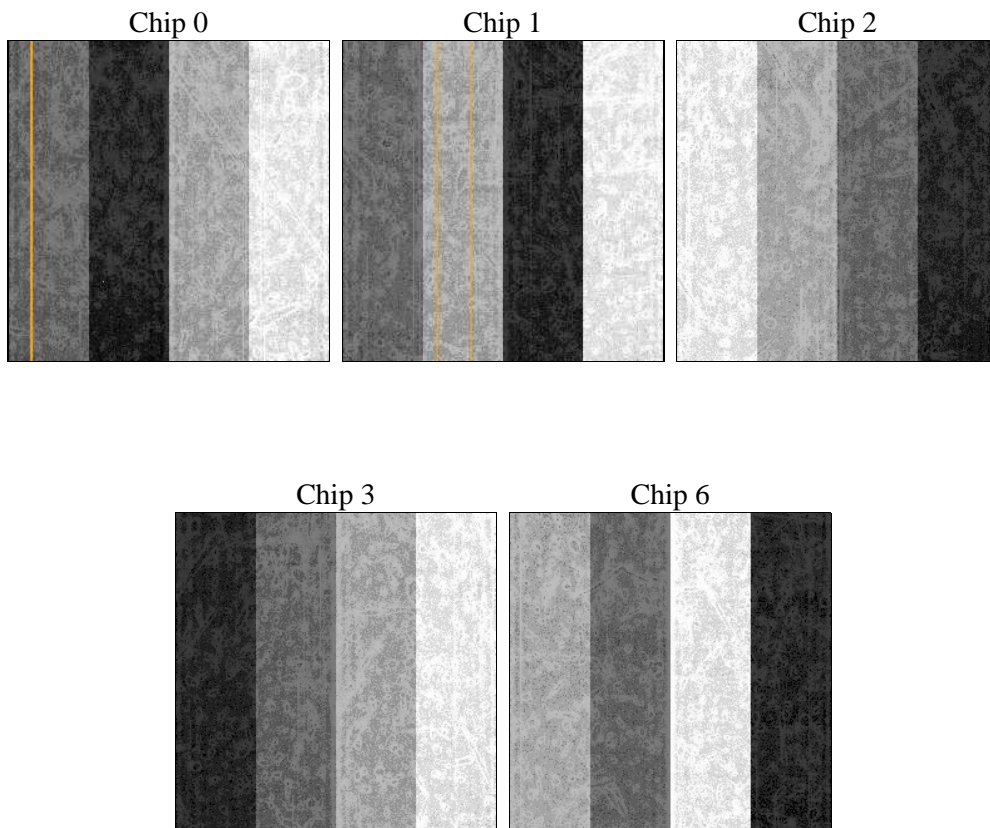
2 OBI

2.1 OBI

2.1.1 Images



2.1.2 Bias



2.1.3 Parameters

obi_num	0	Obi number	sched_exp_time	22500.000000	[s] Scheduled observation exposure time
ascdsver	10.3.3	Processing system revision	ontime	22582.284307957	Sum of GTIs [s]
caldsver	4.6.7	 	ontime0	22582.161188006	Sum of GTIs [s]
date	2015-05-17T01:51:21	Date and time of file creation	ontime1	22582.20222795	Sum of GTIs [s]
revision	1	Processing version of data	ontime2	22582.243268013	Sum of GTIs [s]
			ontime3	22582.284307957	Sum of GTIs [s]
			ontime6	22582.120147943	Sum of GTIs [s]
			l1events	545402	Number of level 1 events

2.1.4 Events

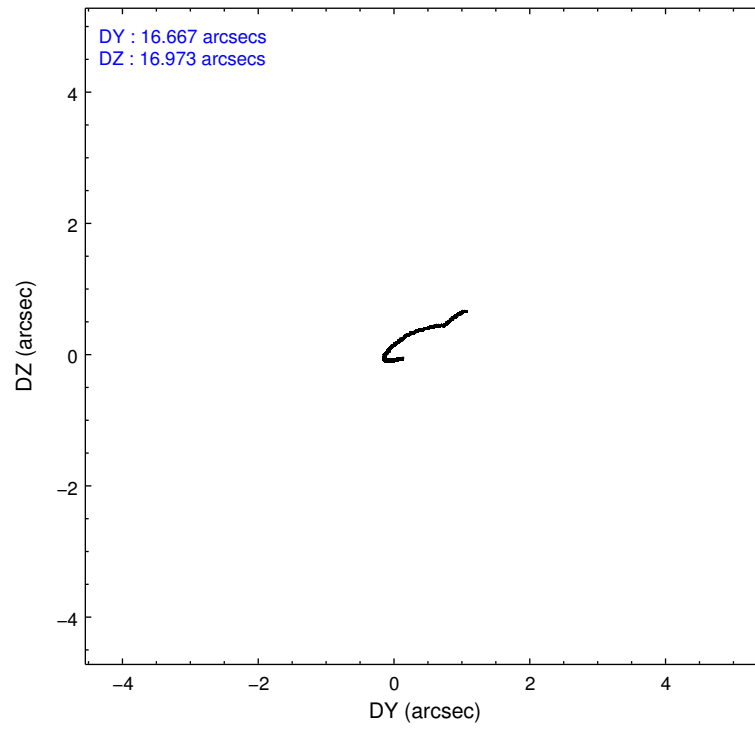
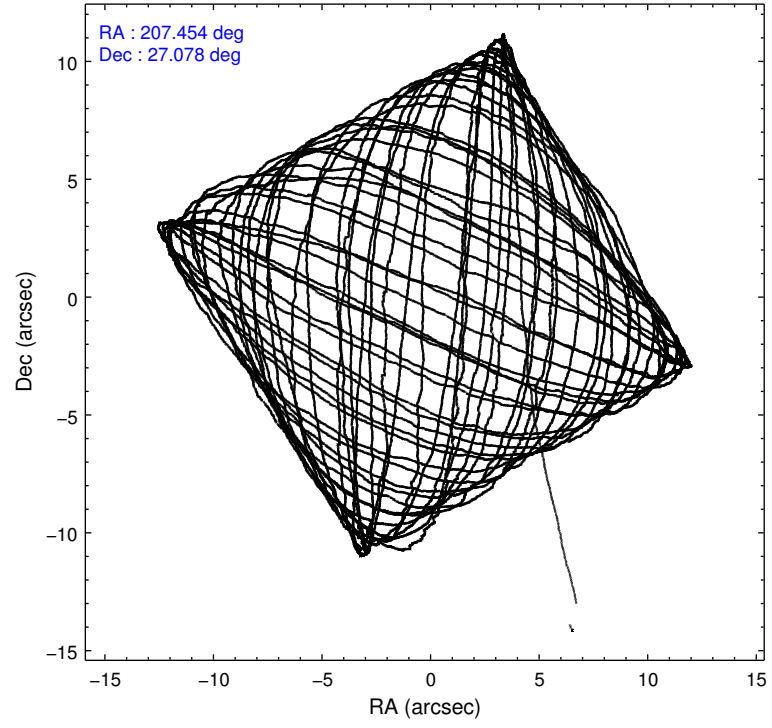
	ccd 0	ccd 1	ccd 2	ccd 3	ccd 6
level 1 events	98777	102000	118392	117977	108256
rejected events	86082	86781	99016	98635	95217
rejected %	87%	85%	83%	83%	87%

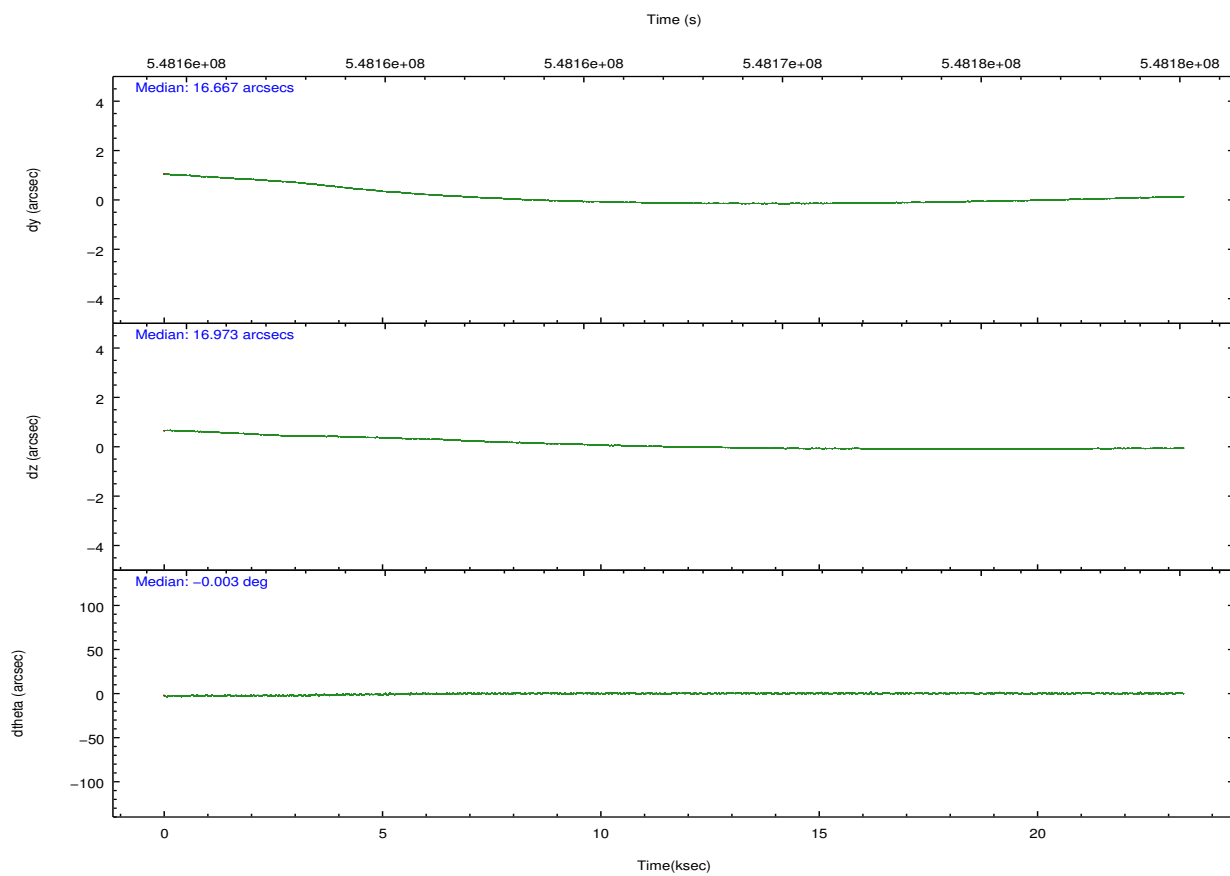
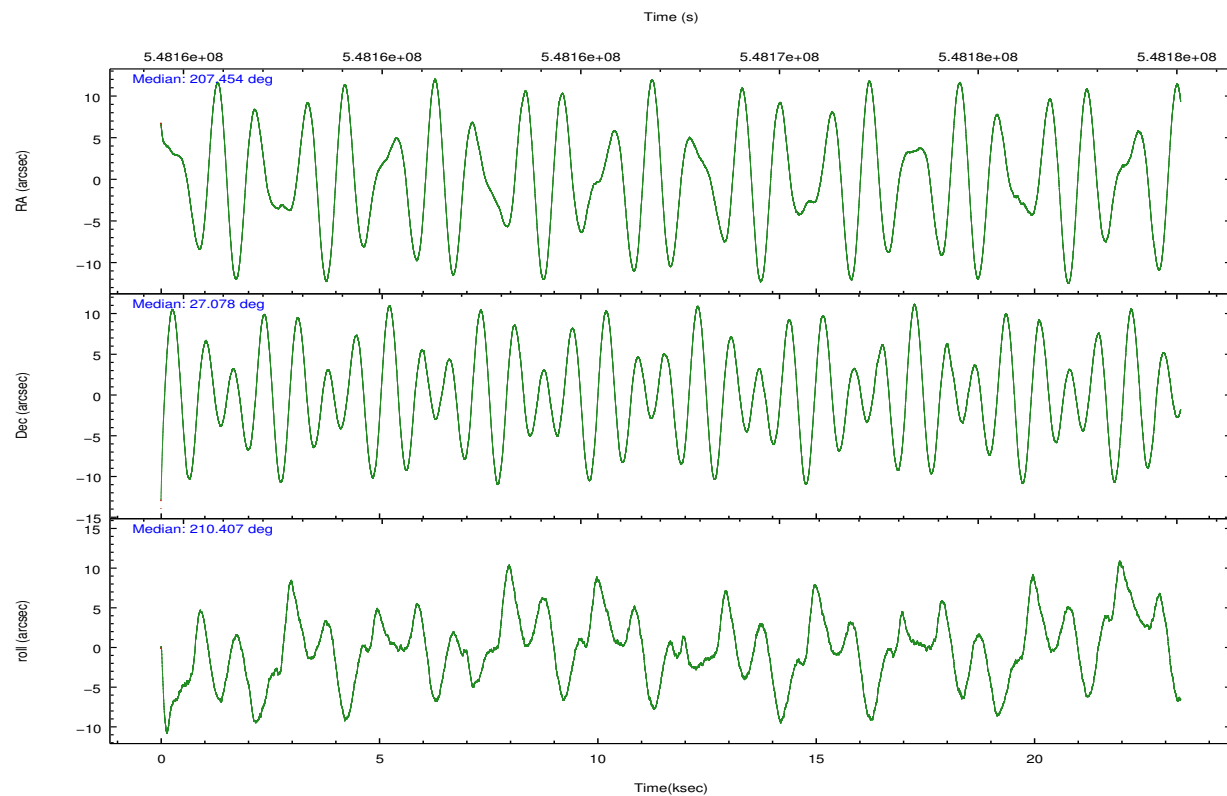
	ccd 0	ccd 1	ccd 2	ccd 3	ccd 6
grade 0 events	4358	5786	4344	11319	4486
	4%	5%	3%	9%	4%
grade 1 events	56	67	64	108	43
	0%	0%	0%	0%	0%
grade 2 events	3114	3418	10041	2739	2877
	3%	3%	8%	2%	2%
grade 3 events	1348	1378	1228	1309	1357
	1%	1%	1%	1%	1%
grade 4 events	1277	1385	1276	1319	1290
	1%	1%	1%	1%	1%
grade 5 events	5325	5399	4725	5979	5569
	5%	5%	3%	5%	5%
grade 6 events	2600	3254	2494	2661	3032
	2%	3%	2%	2%	2%
grade 7 events	80699	81313	94220	92543	89602
	81%	79%	79%	78%	82%

2.2 Compared Parameters

Parameter	Planned	Actual	Parameter	Planned	Actual
Instrument	ACIS	ACIS	Obspar format version number	7	7
Detector	ACIS-01236	ACIS-01236	Obspar file type	PREDICTED	ACTUAL
Grating	NONE	NONE	Obspar update status	NONE	UPDATED
Data mode	VFAINT	VFAINT	CCD I0 on	Y	Y
Observation mode	POINTING	POINTING	CCD I1 on	Y	Y
[deg] Pointing RA	207.468994	207.4538159503258	CCD I2 on	Y	Y
[deg] Pointing Dec	27.101574	27.07752306610679	CCD I3 on	Y	Y
[deg] Pointing Roll	210.196413	210.412016755723	CCD S0 on	N	N
[mm] SIM focus pos	-0.782348	-0.7809083437167272	CCD S1 on	N	N
[mm] SIM defocus	0	0.001439871863259334	CCD S2 on	O1	Y
[mm] SIM translation stage pos	-233.592463	-233.5874344608287	CCD S3 on	N	N
[mm] SIM translation stage offset	0	-0.005018542100998502	CCD S4 on	N	N
[s] Observation start time (MET)	548156429.184000	548154882.01879	CCD S5 on	N	N
Observation start date	2015-05-16T09:39:22	2015-05-16T09:14:42	Number of optional ACIS chips dropped	0	0
[s] Observation end time (MET)	548178929.184000	548179747.49518	On-chip summing requested	N	N
Observation end date	2015-05-16T15:54:22	2015-05-16T16:09:07	Subarray requested	NONE	NONE
Read mode	TIMED	TIMED	Alternating exposures requested	N	N
			[s] Primary exposure time	0.000000	3.1

2.3 Aspect



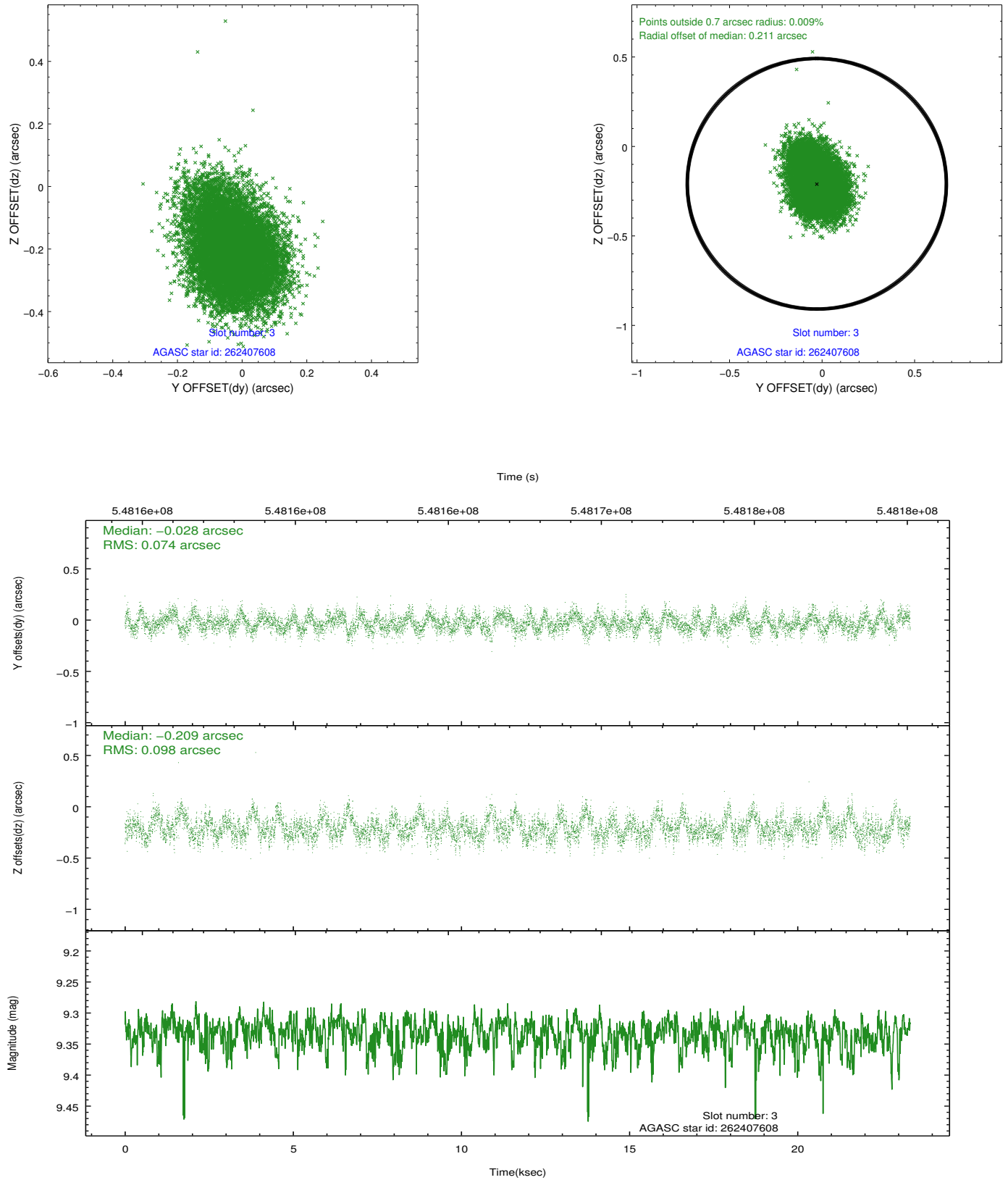


Slot Statistics

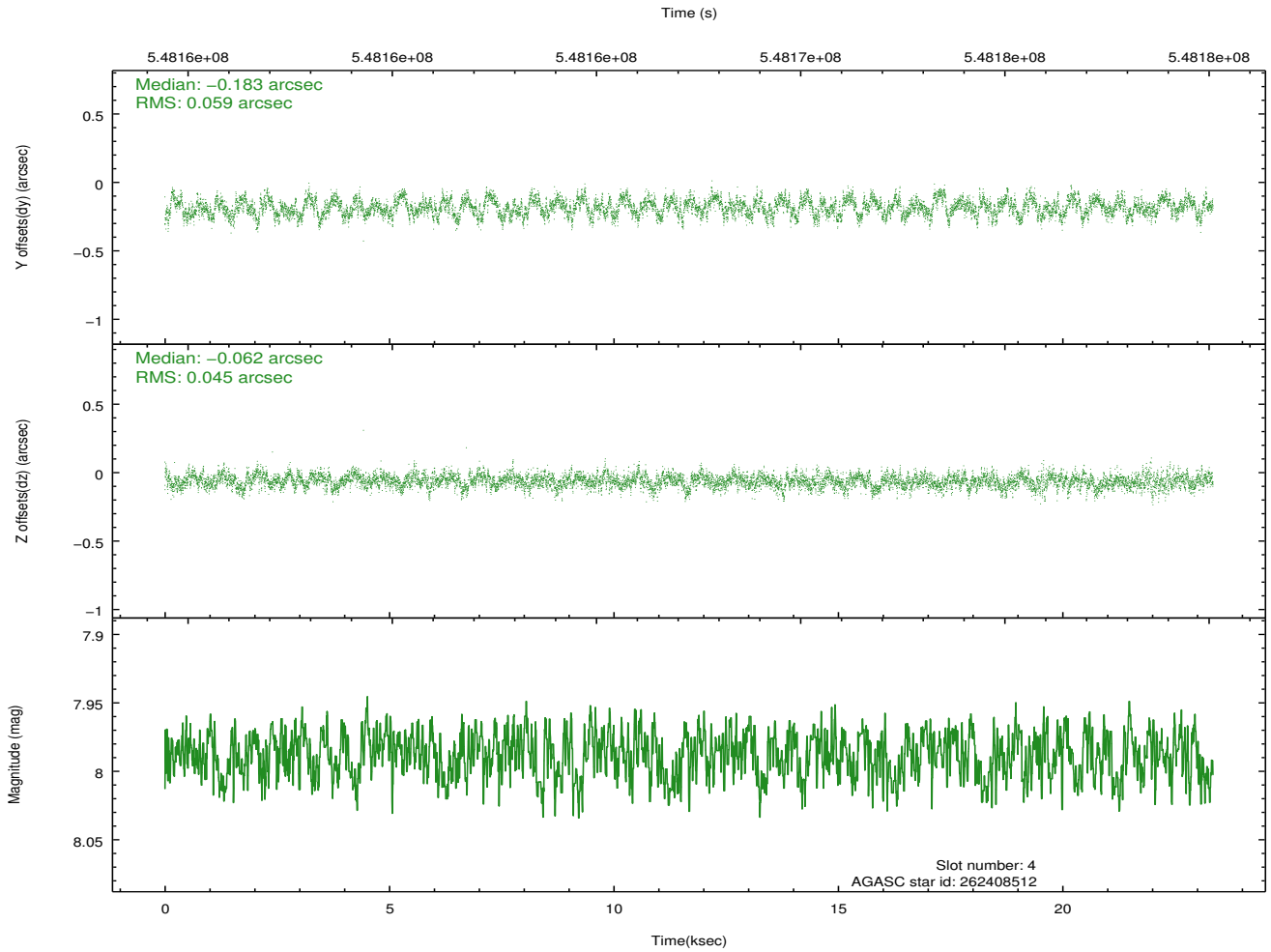
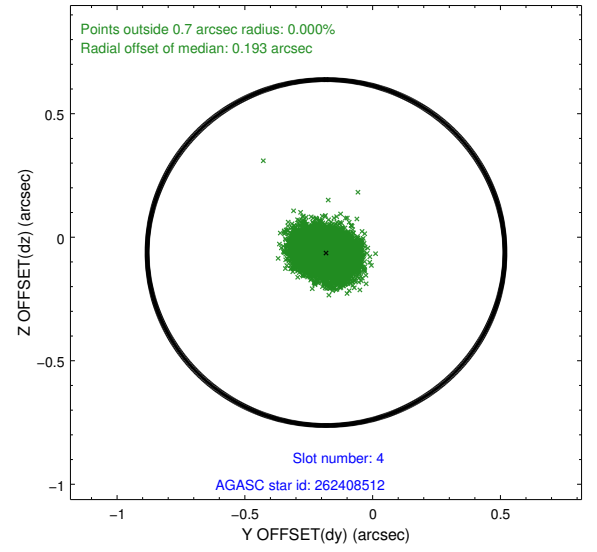
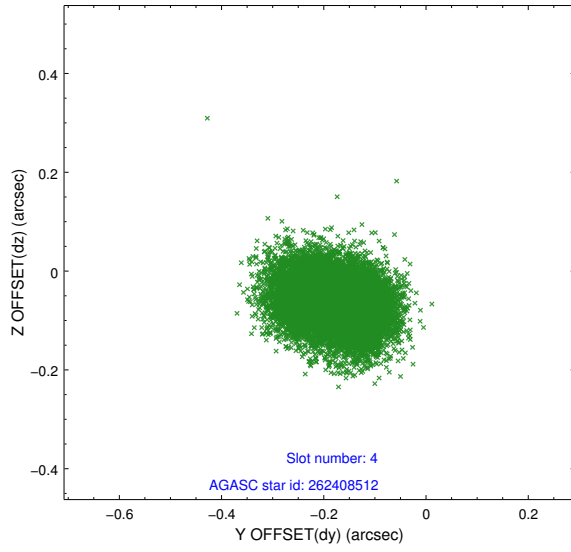
slot	status	used	id	mag	n_pts	med_dy	med_dz	dr1	dr2	ra	dec	mean_y	mean_z
0	FID		ACIS-I-1	7.14	5696	0.074	-0.024	0.008	0.013	0.000000	0.000000	922.69	-840.76
1	FID		ACIS-I-5	7.15	5696	-0.297	0.055	0.011	0.023	0.000000	0.000000	-1825.75	1056.70
2	FID		ACIS-I-6	7.14	5696	0.131	0.039	0.010	0.020	0.000000	0.000000	388.10	1701.38
3	GUIDE	used	262407608	9.33	11173	-0.028	-0.209	0.129	0.214	207.378401	26.435507	1458.65	1925.75
4	GUIDE	used	262408512	7.99	11391	-0.183	-0.062	0.080	0.126	207.800210	27.128796	-966.85	448.05
5	GUIDE	used	262409552	8.19	11384	0.244	-0.042	0.096	0.163	206.584269	27.192805	2279.38	-1716.89
6	GUIDE	used	262800360	8.56	11388	0.061	0.164	0.089	0.140	207.437814	27.569136	-759.77	-1504.92
7	GUIDE	used	262409648	8.37	11384	-0.095	0.141	0.075	0.123	208.329010	27.087208	-2362.13	1422.91

2.4 Star Slots

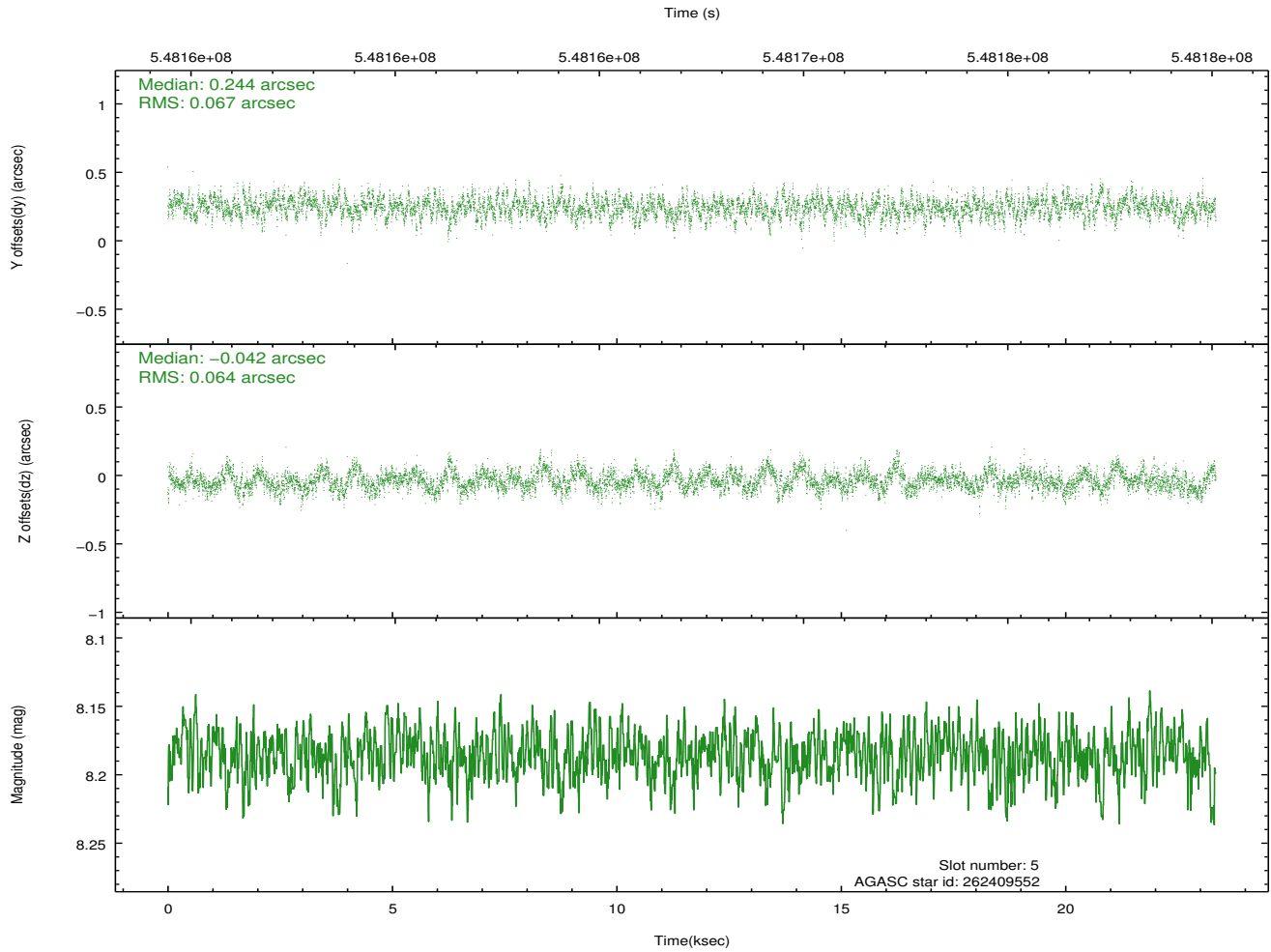
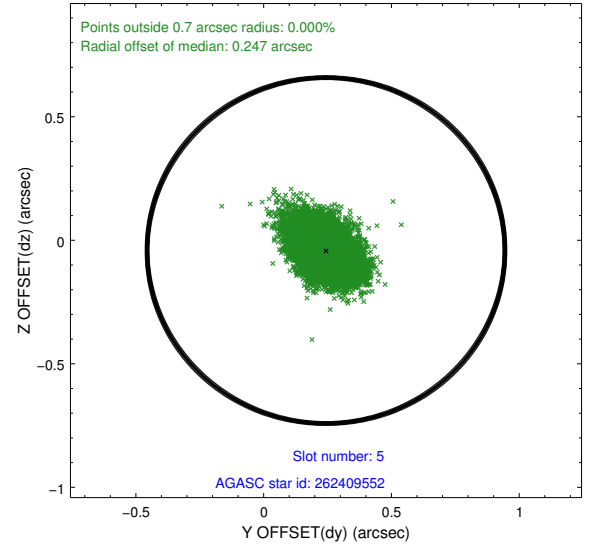
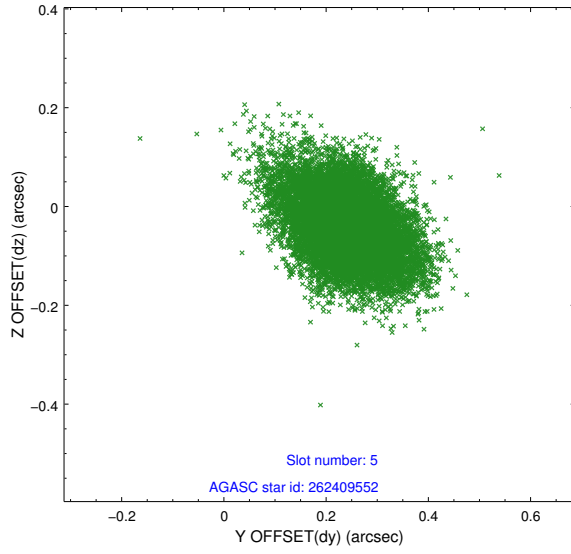
2.4.1 Slot 3



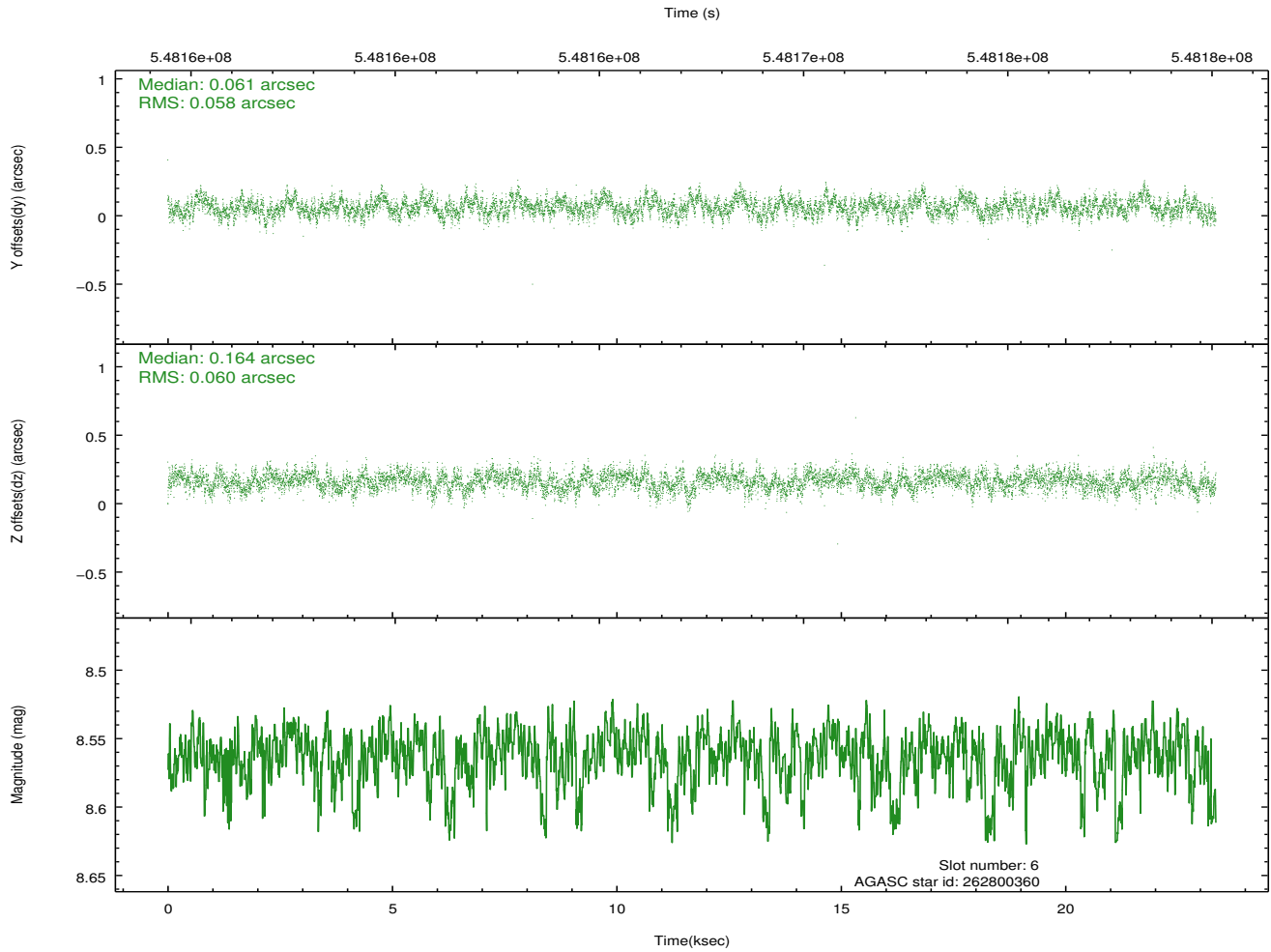
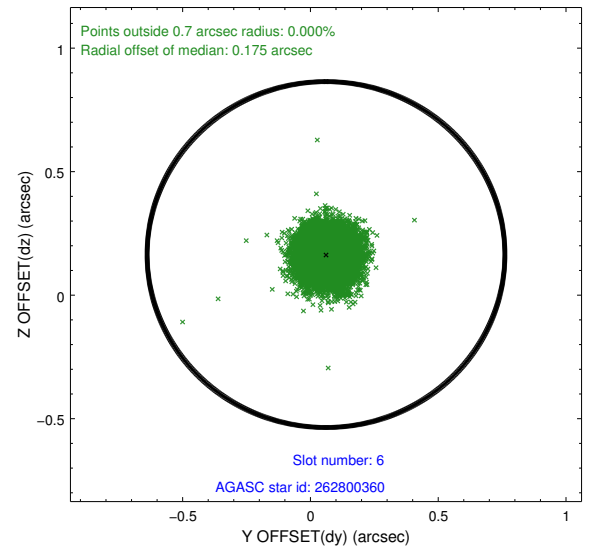
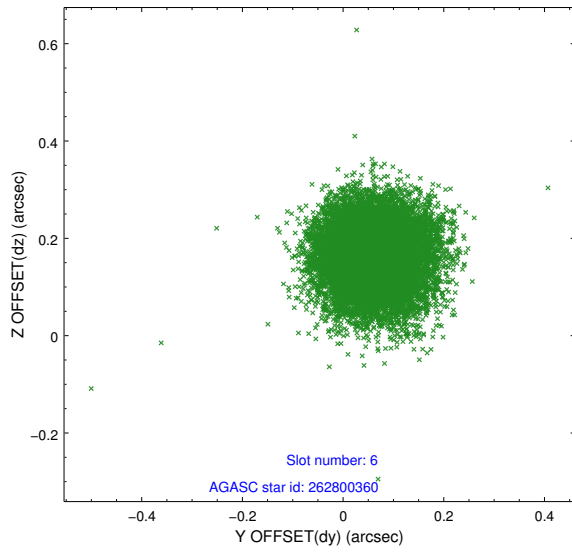
2.4.2 Slot 4



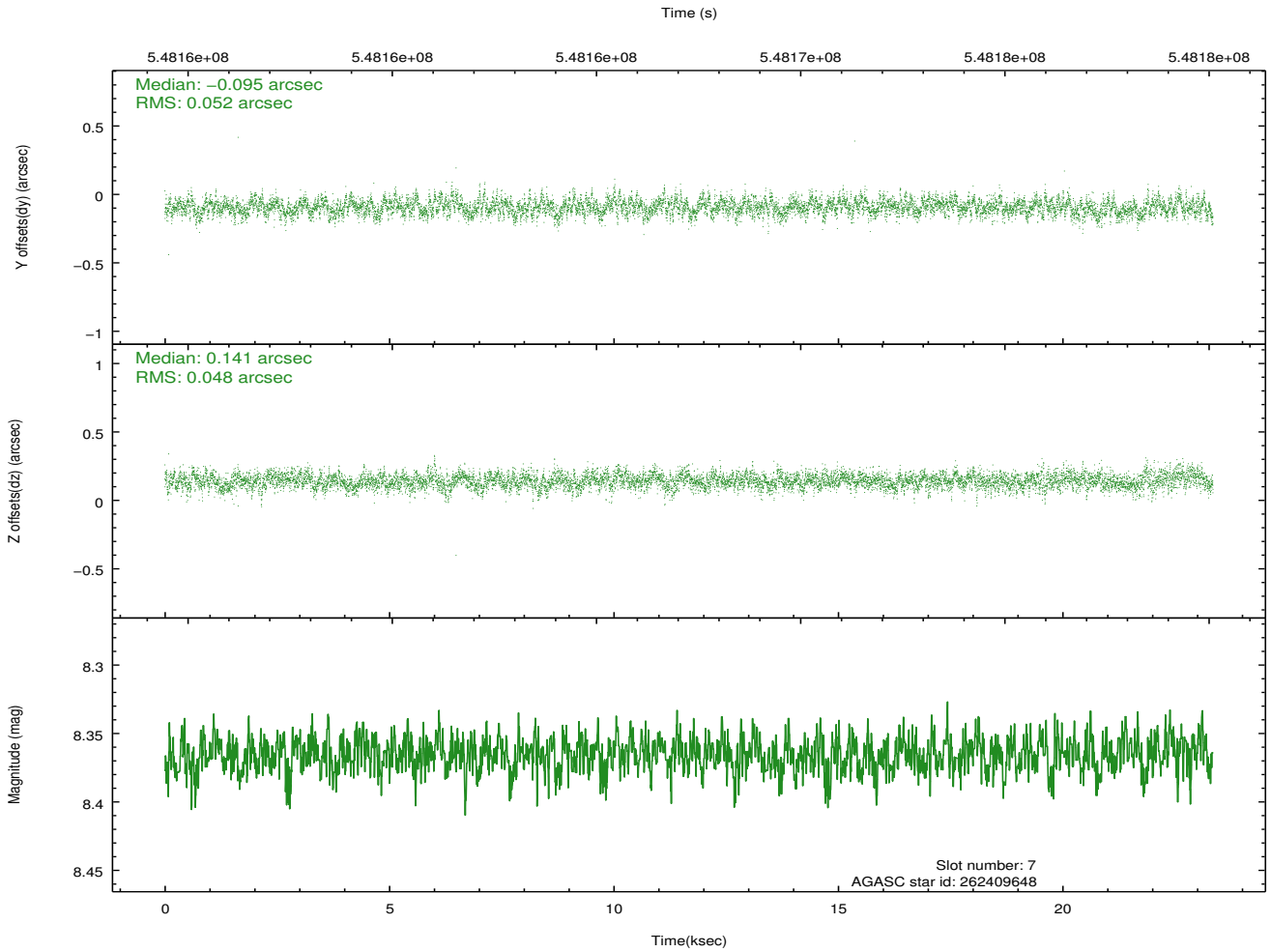
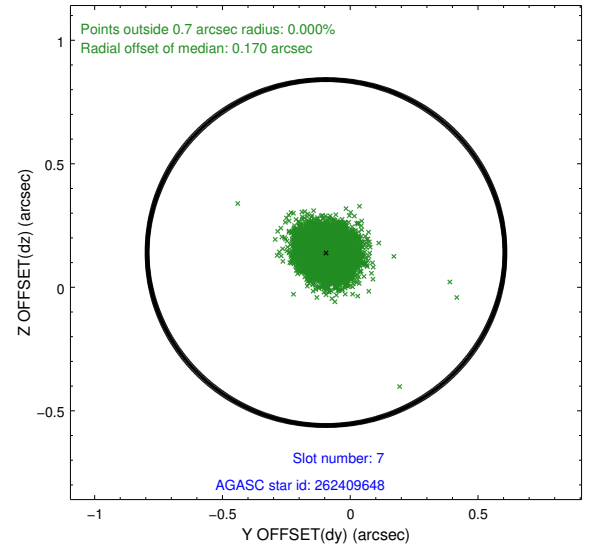
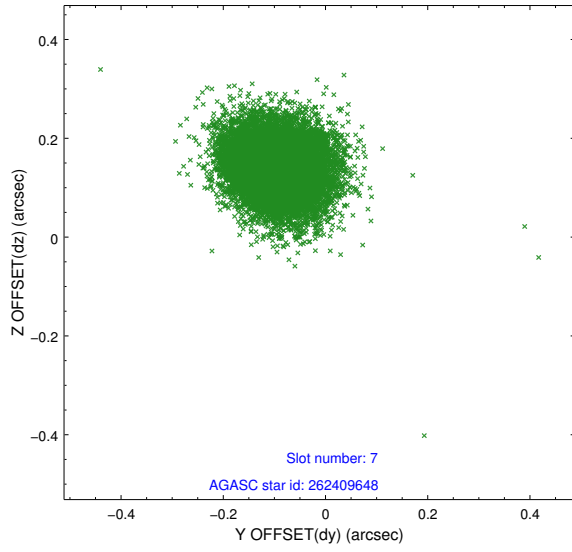
2.4.3 Slot 5



2.4.4 Slot 6

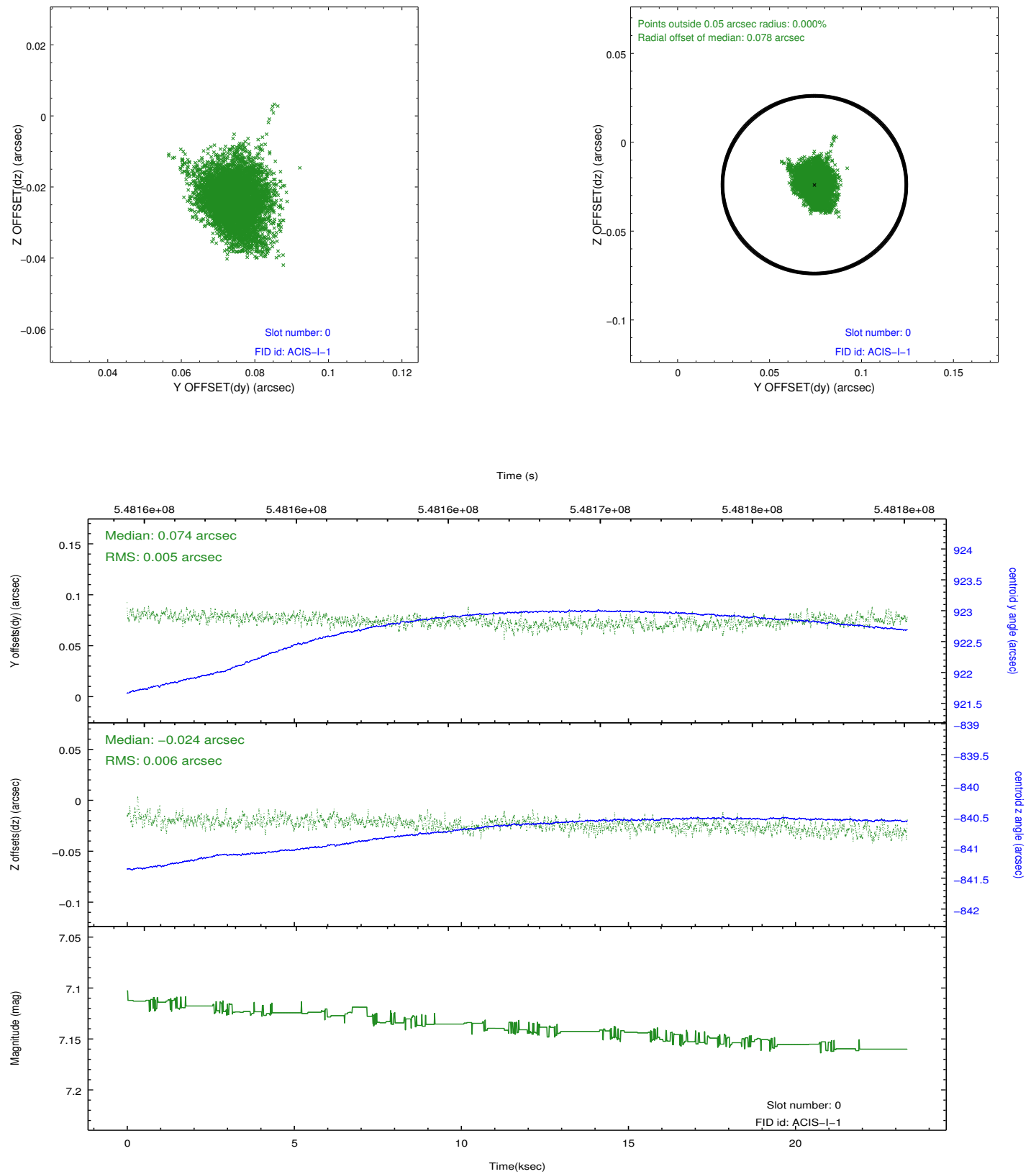


2.4.5 Slot 7

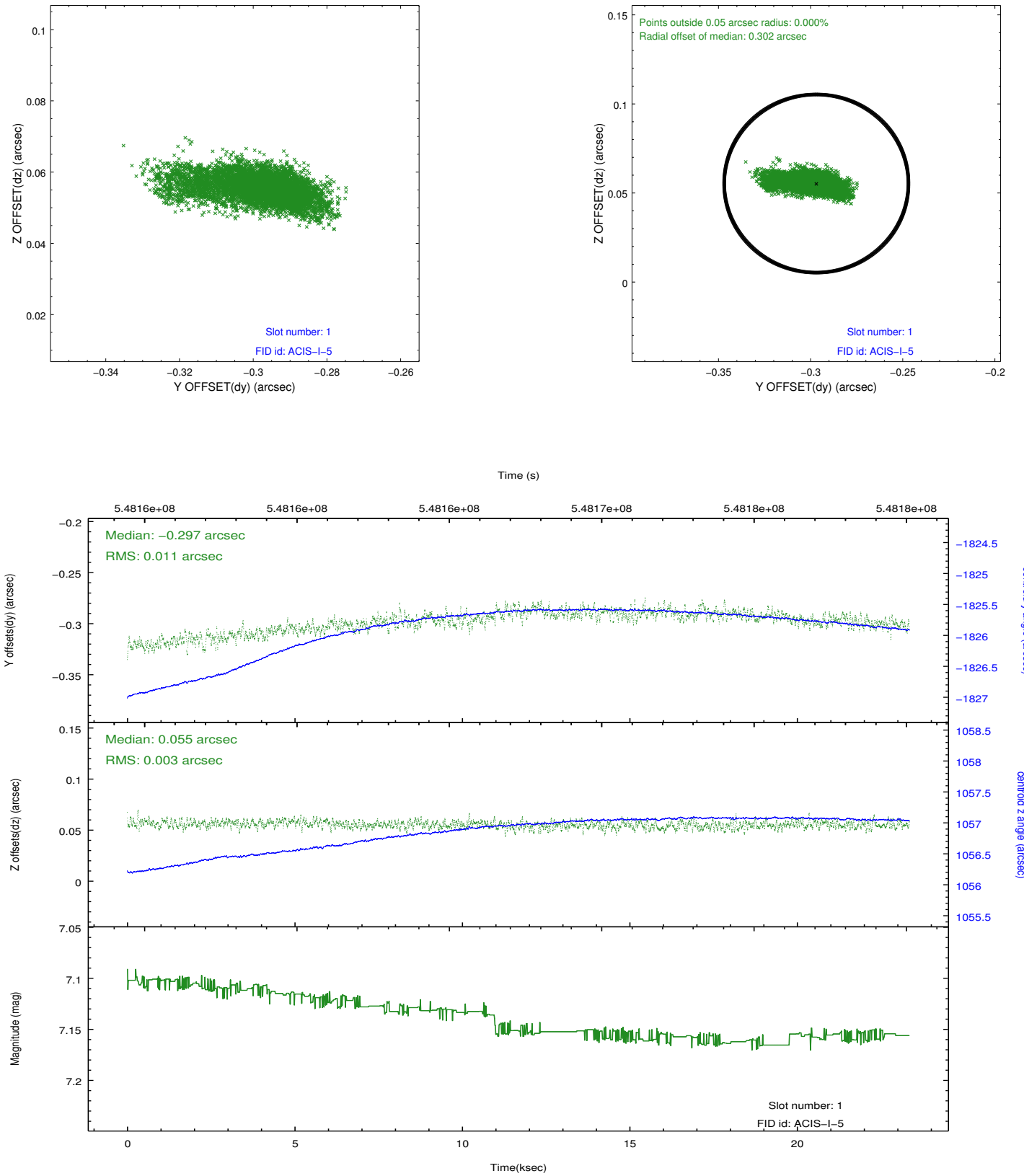


2.5 FID Slots

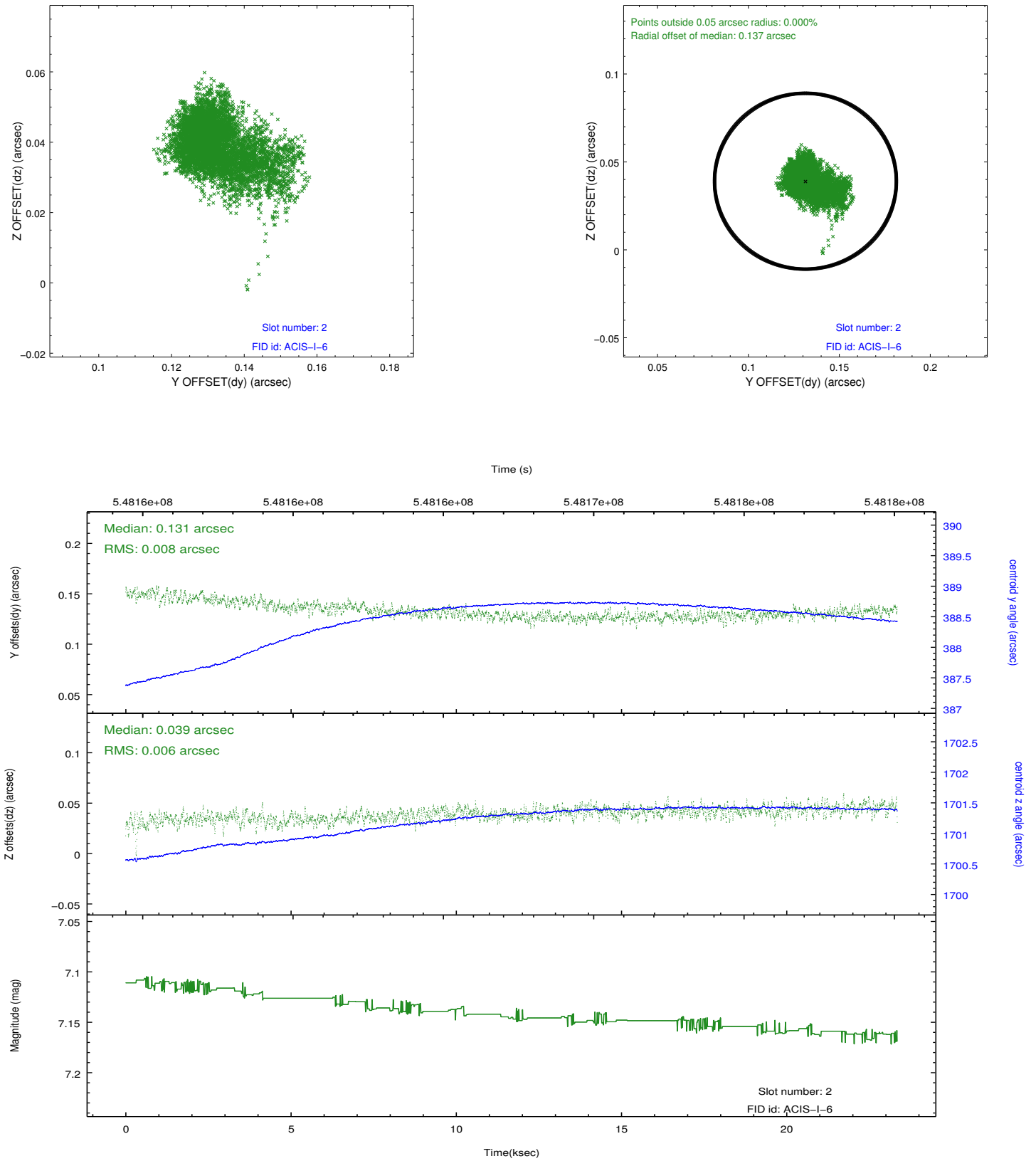
2.5.1 Slot 0



2.5.2 Slot 1



2.5.3 Slot 2



A Summary

A.1 Status

V&V Scientist	Joy Nichols
V&V Date (YYYY-MM-DD)	2015.05.18
V&V Edition	1
V&V Disposition and Status	OK
V&V Charge Time	22.582284307957

A.2 Comments