

V&V Reference Report

L2 ASCDS Version : 10.3.3

Observation 17214 - L2 Version 1
Chandra X-Ray Center

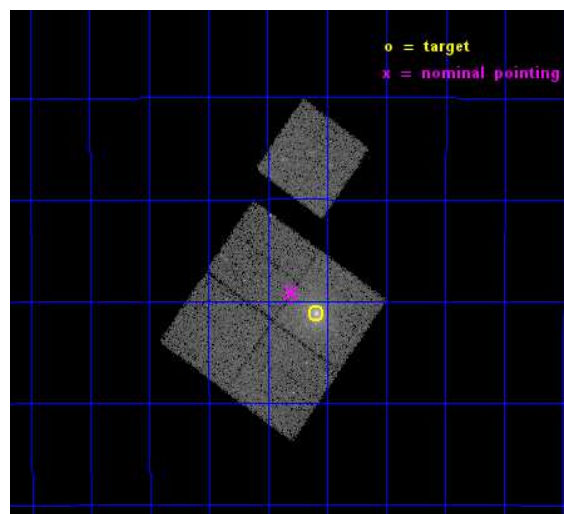
L2 Processing Date : Mar 25 2015

Contents

1	Front	2
2	OBI	3
2.1	OBI	3
2.1.1	Images	3
2.1.2	Bias	3
2.1.3	Parameters	4
2.1.4	Events	4
2.2	Compared Parameters	5
2.3	Aspect	6
2.4	Star Slots	9
2.4.1	Slot 3	9
2.4.2	Slot 4	10
2.4.3	Slot 5	11
2.4.4	Slot 6	12
2.4.5	Slot 7	13
2.5	FID Slots	14
2.5.1	Slot 0	14
2.5.2	Slot 1	15
2.5.3	Slot 2	16
A	Summary	17
A.1	Status	17
A.2	Comments	17

1 Front

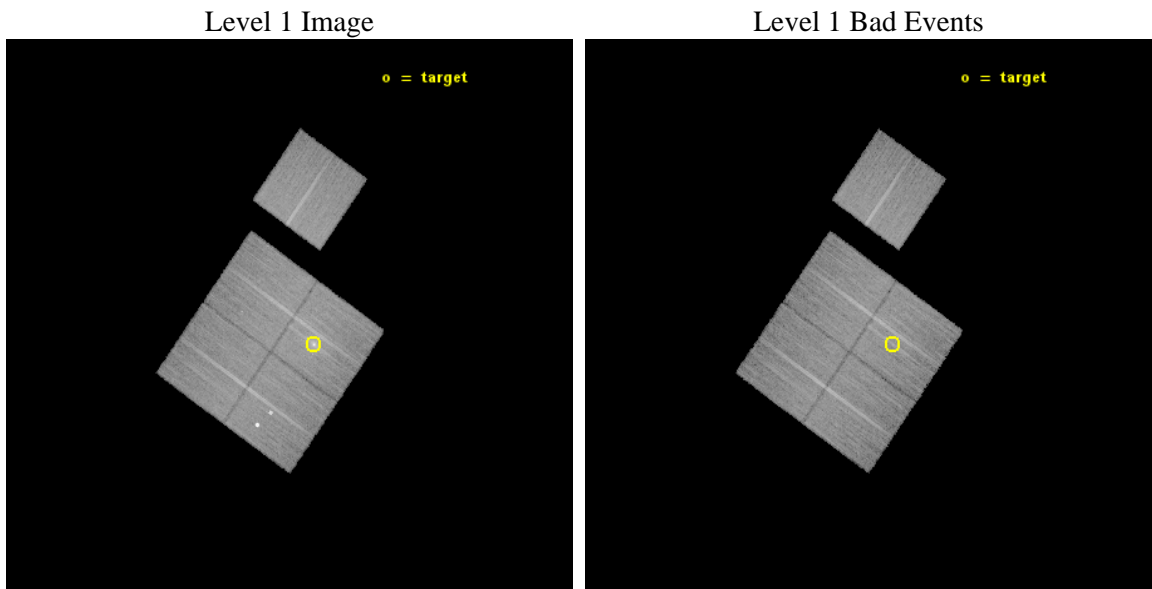
seq_num	801494	Sequence number
obs_id	17214	Observation id
title	DISTANT GALAXY CLUSTERS HOSTING EXTREME CENTRAL GALAXIES	Proposal
observer	Dr Michael McDonald	Principal investigator
object	PKS1353-341	Source name
dtcycle	0	
cycle	P	events from which exps? Prim/Second/Both
ra_targ	209.0225	Observer's specified target RA [deg]
dec_targ	-34.353028	Observer's specified target Dec [deg]
ra_nom	209.07481101576	Nominal RA [deg]
dec_nom	-34.319741652122	Nominal Dec [deg]
roll_nom	35.238185793976	Nominal Roll [deg]
revision	1	Processing version of data
ontime	31052.700238943	Sum of GTIs [s]
livetime	30646.973849656	Livetime [s]
ontime0	31052.700238943	Sum of GTIs [s]
ontime1	31052.700238943	Sum of GTIs [s]
ontime2	31049.559178829	Sum of GTIs [s]
ontime3	31052.700238943	Sum of GTIs [s]
ontime6	31049.559178829	Sum of GTIs [s]
l2events	82891	Number of level 2 events



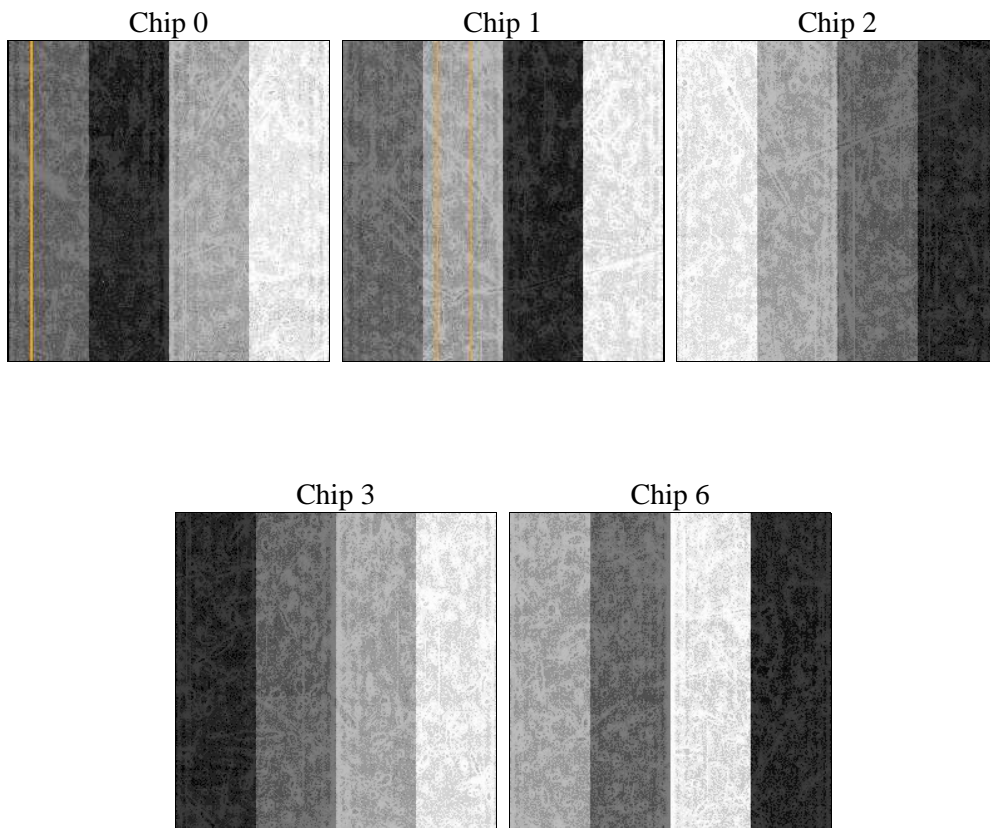
2 OBI

2.1 OBI

2.1.1 Images



2.1.2 Bias



2.1.3 Parameters

obi_num	0	Obi number	sched_exp_time	31000.000000	[s] Scheduled observation exposure time
ascdsver	10.3.3	Processing system revision	ontime	31052.700238943	Sum of GTIs [s]
caldsver	4.6.7	 	ontime0	31052.700238943	Sum of GTIs [s]
date	2015-03-25T13:53:40	Date and time of file creation	ontime1	31052.700238943	Sum of GTIs [s]
revision	1	Processing version of data	ontime2	31049.559178829	Sum of GTIs [s]
			ontime3	31052.700238943	Sum of GTIs [s]
			ontime6	31049.559178829	Sum of GTIs [s]
			l1events	710944	Number of level 1 events

2.1.4 Events

	ccd 0	ccd 1	ccd 2	ccd 3	ccd 6
level 1 events	129286	142860	140329	154627	143842
rejected events	113012	115282	124208	125832	126953
rejected %	87%	80%	88%	81%	88%

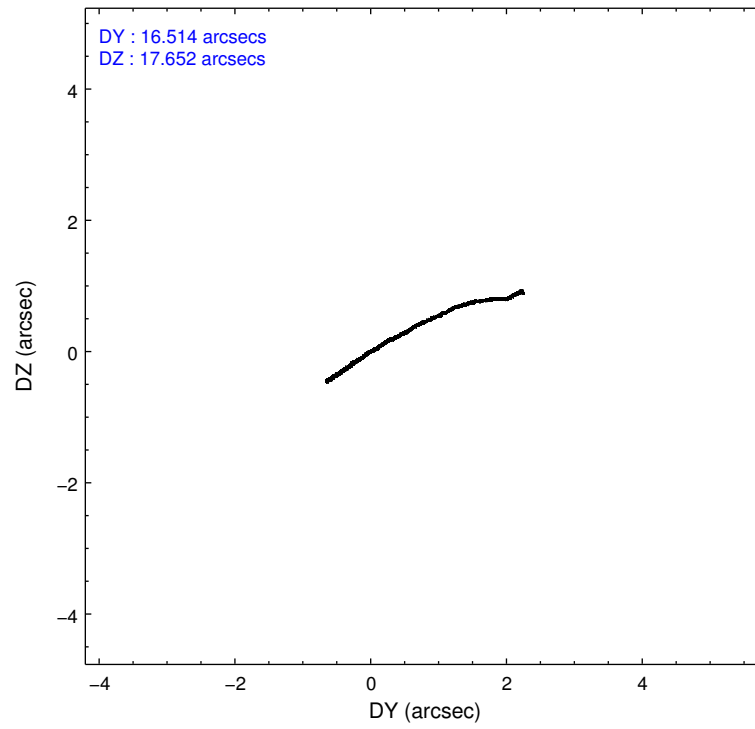
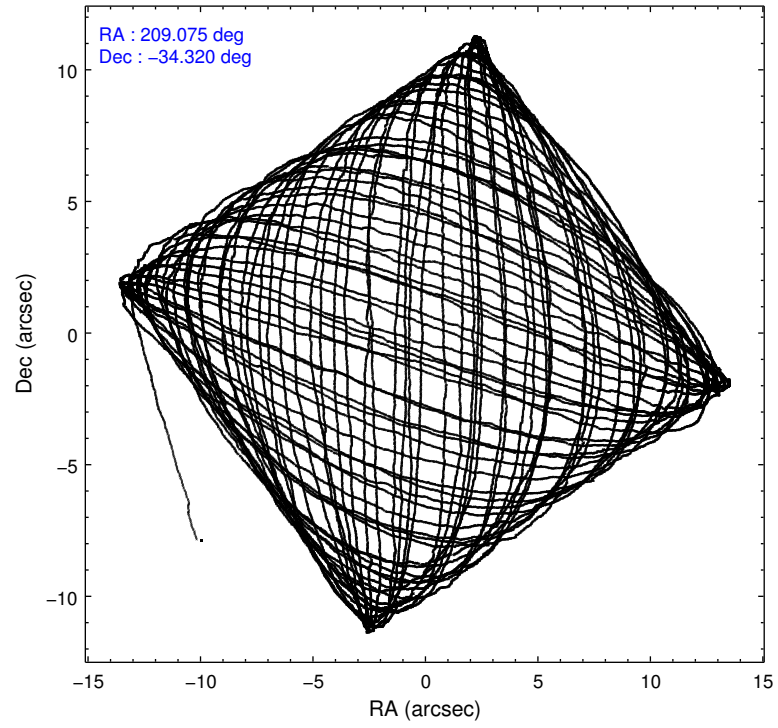
	ccd 0	ccd 1	ccd 2	ccd 3	ccd 6
grade 0 events	5729	15921	6012	16128	5701
	4%	11%	4%	10%	3%
grade 1 events	62	118	83	124	68
	0%	0%	0%	0%	0%
grade 2 events	3853	4055	3736	4725	3808
	2%	2%	2%	3%	2%
grade 3 events	1670	1693	1653	1992	1673
	1%	1%	1%	1%	1%
grade 4 events	1570	1679	1598	2136	1646
	1%	1%	1%	1%	1%
grade 5 events	6413	6667	6179	7378	6860
	4%	4%	4%	4%	4%
grade 6 events	3454	4238	3126	3818	4068
	2%	2%	2%	2%	2%
grade 7 events	106535	108489	117942	118326	120018
	82%	75%	84%	76%	83%

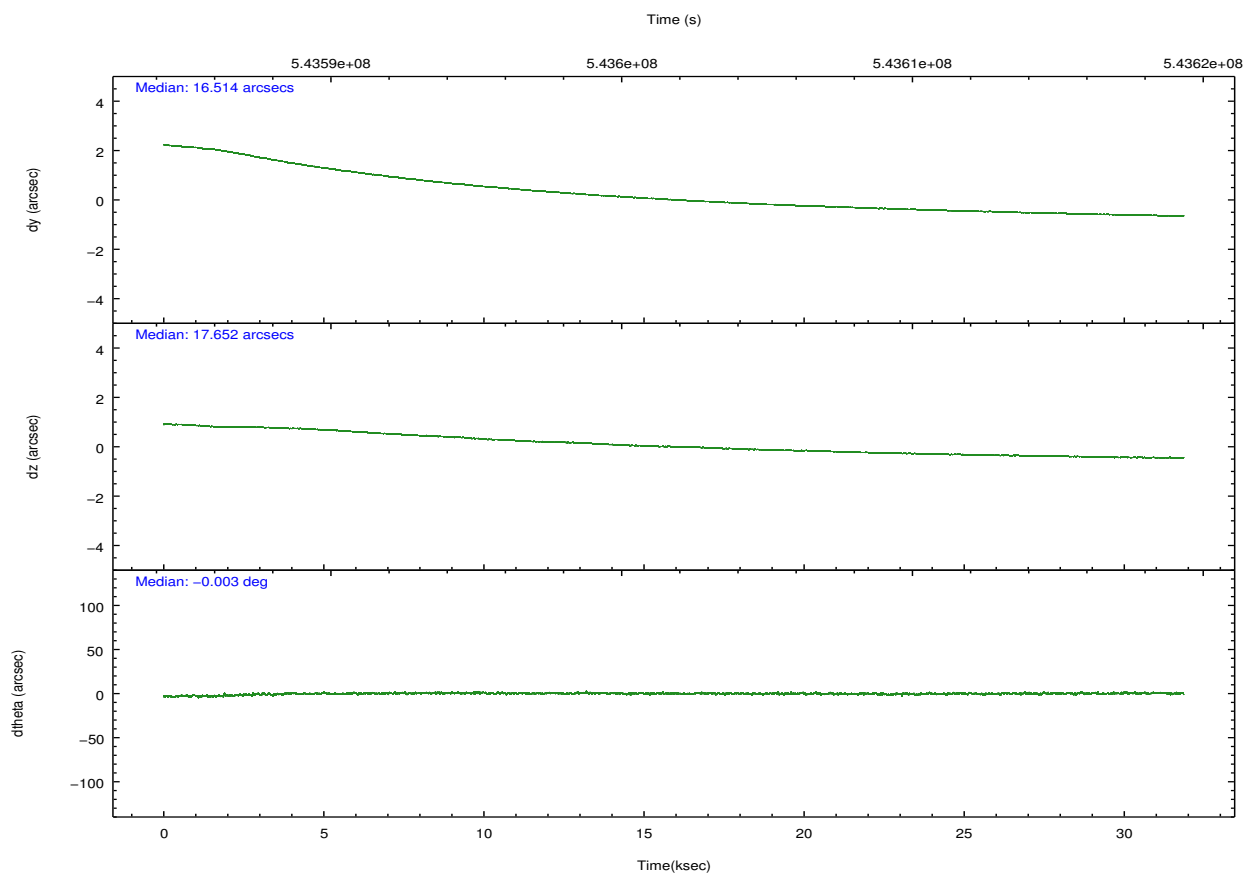
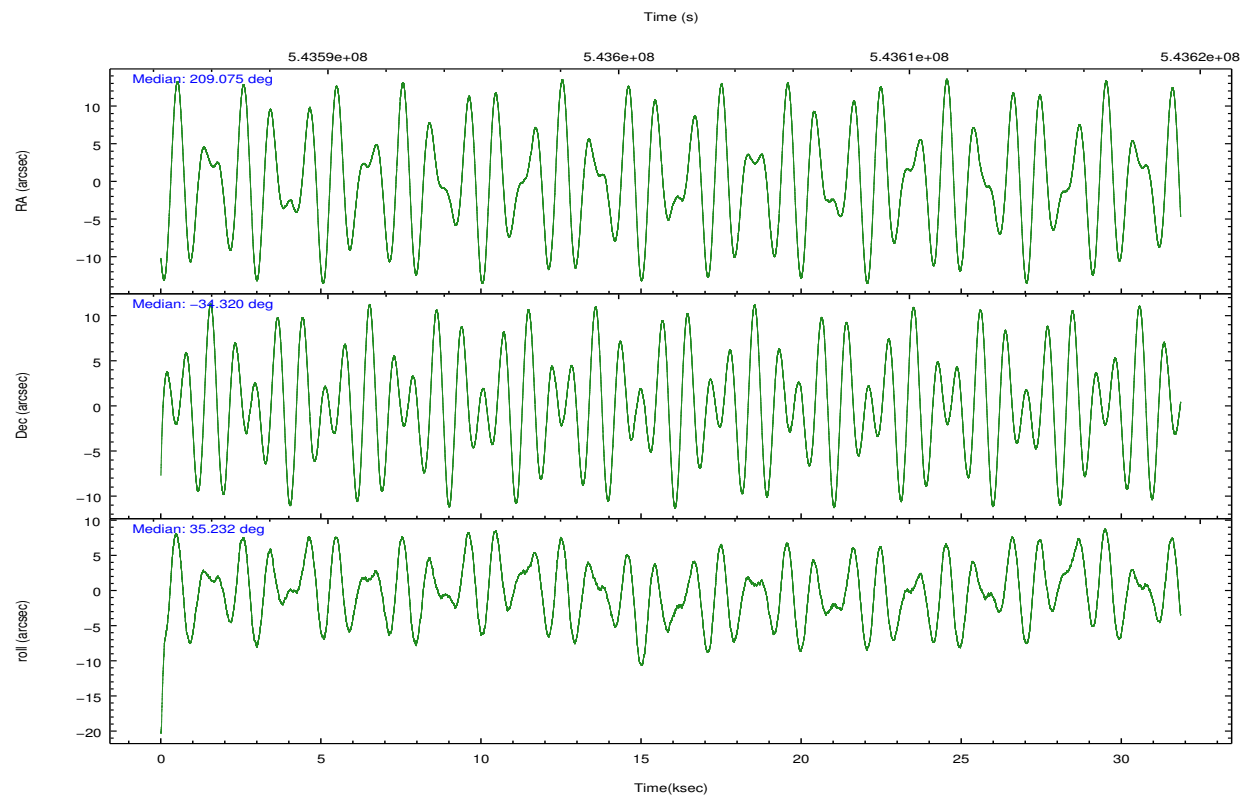
2.2 Compared Parameters

Parameter	Planned	Actual
Instrument	ACIS	ACIS
Detector	ACIS-01236	ACIS-01236
Grating	NONE	NONE
Data mode	VFAINT	VFAINT
Observation mode	POINTING	POINTING
[deg] Pointing RA	209.060914	209.0748110157571
[deg] Pointing Dec	-34.344852	-34.31974165212246
[deg] Pointing Roll	35.021668	35.23818579397582
[mm] SIM focus pos	-0.782348	-0.7809083437167272
[mm] SIM defocus	0	0.001439871863259334
[mm] SIM translation stage pos	-225.842463	-225.8433433320239
[mm] SIM translation stage offset	-7.75	-7.749109670905796
[s] Observation start time (MET)	543586712.184000	543585250.3377301
Observation start date	2015-03-24T12:17:25	2015-03-24T11:54:10
[s] Observation end time (MET)	543617712.184000	543618818.06466
Observation end date	2015-03-24T20:54:05	2015-03-24T21:13:38
Read mode	TIMED	TIMED

Parameter	Planned	Actual
Obspar format version number	7	7
Obspar file type	PREDICTED	ACTUAL
Obspar update status	NONE	UPDATED
CCD I0 on	Y	Y
CCD I1 on	Y	Y
CCD I2 on	Y	Y
CCD I3 on	Y	Y
CCD S0 on	N	N
CCD S1 on	N	N
CCD S2 on	O1	Y
CCD S3 on	N	N
CCD S4 on	N	N
CCD S5 on	N	N
Number of optional ACIS chips dropped	0	0
On-chip summing requested	N	N
Subarray requested	NONE	NONE
Alternating exposures requested	N	N
[s] Primary exposure time	0.000000	3.1

2.3 Aspect



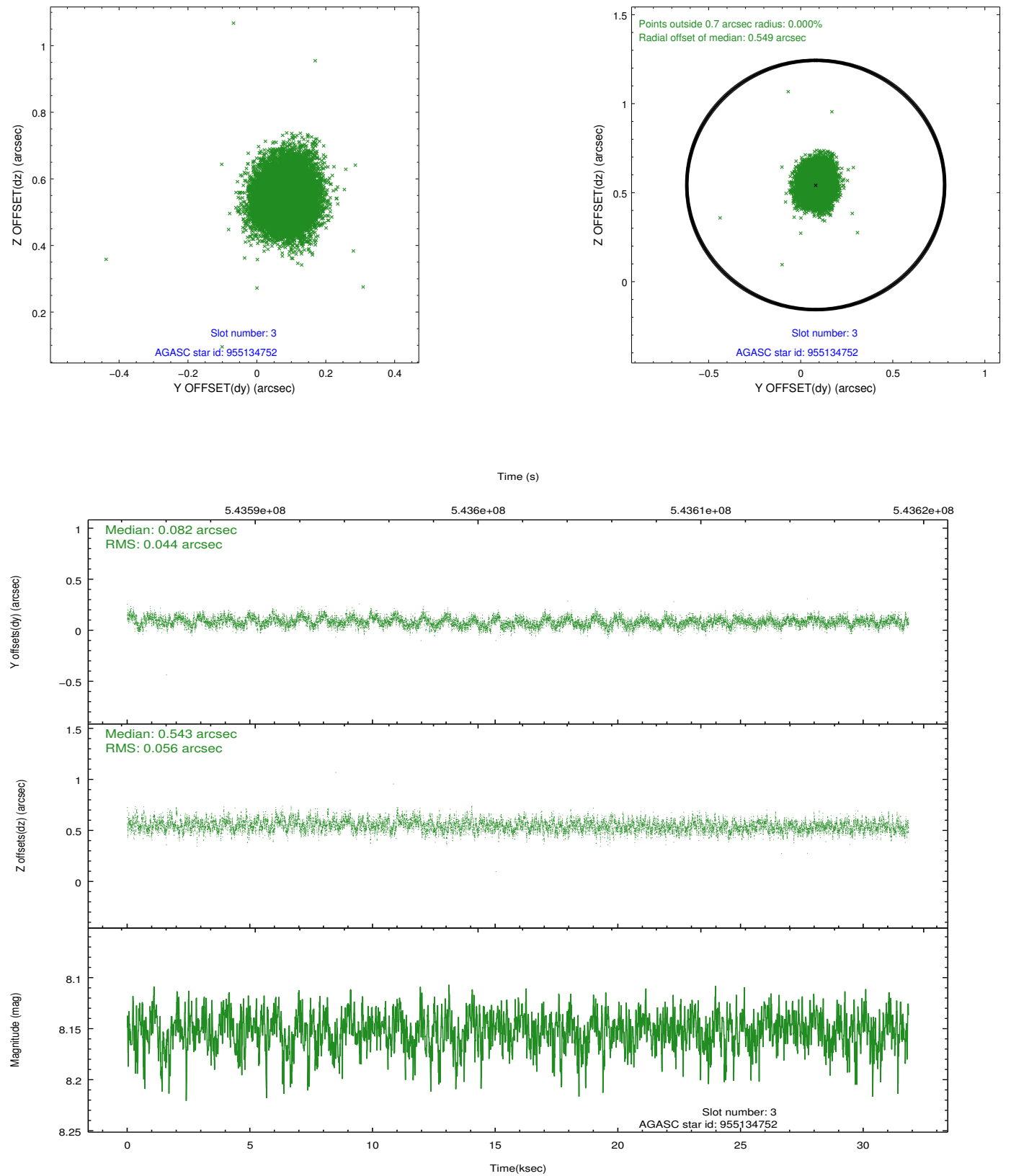


Slot Statistics

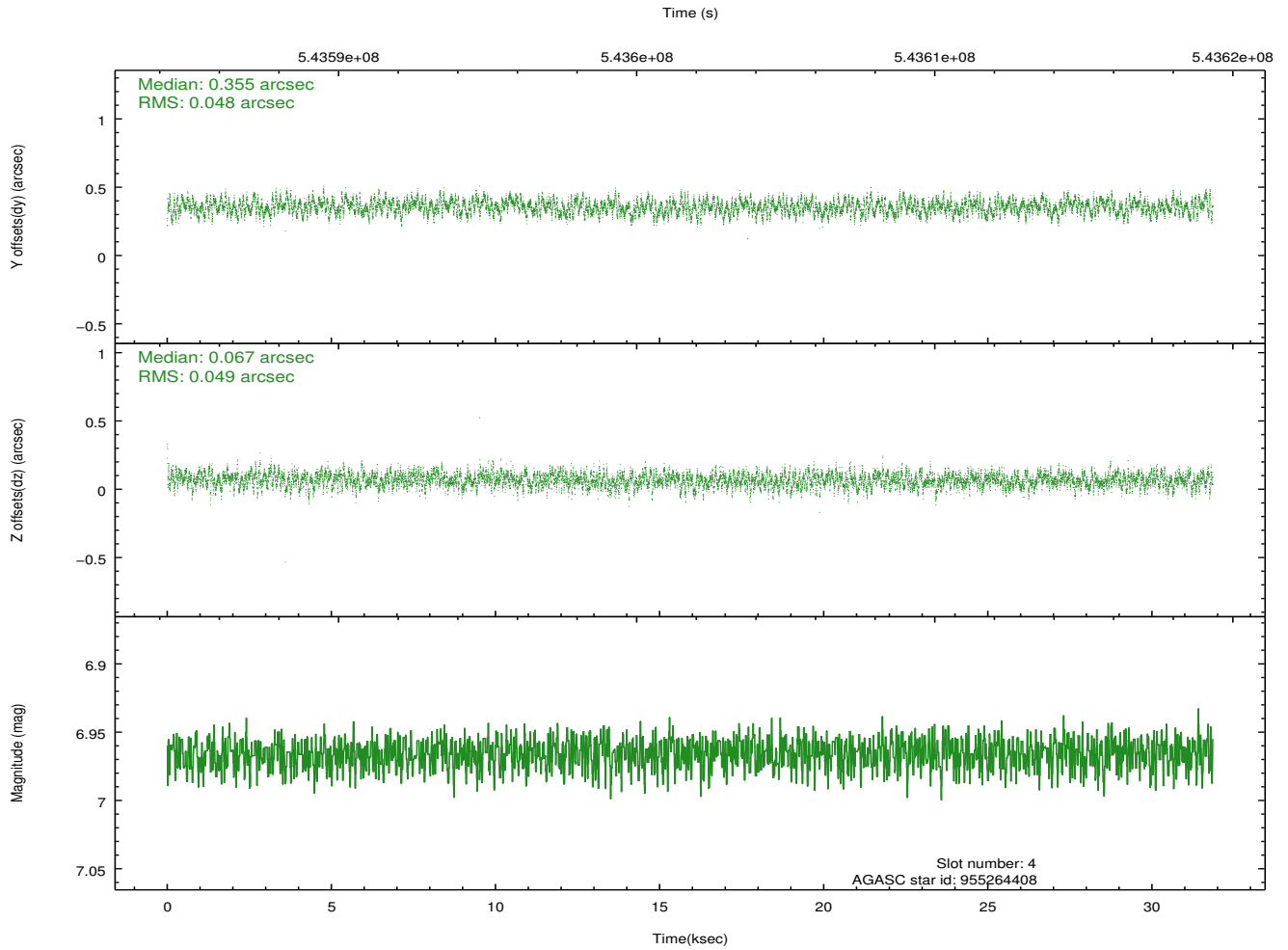
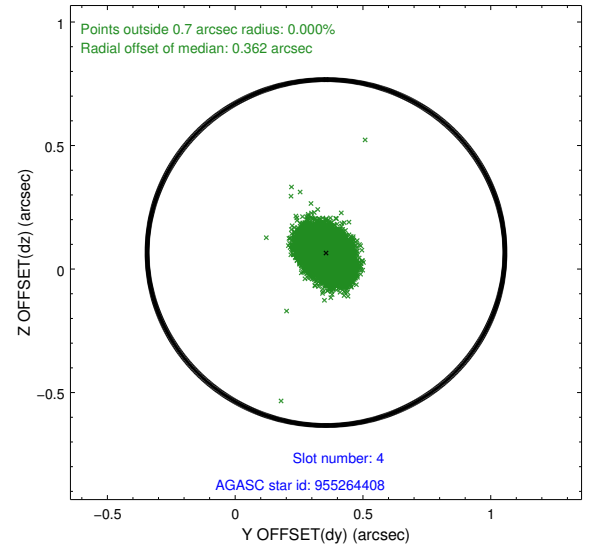
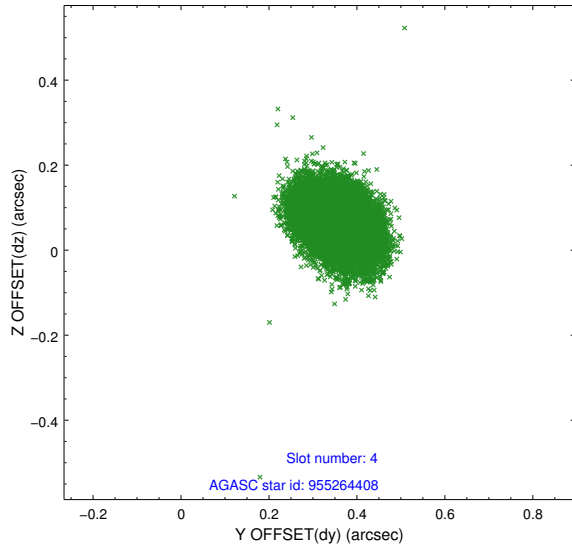
slot	status	used	id	mag	n_pts	med_dy	med_dz	dr1	dr2	ra	dec	mean_y	mean_z
0	FID		ACIS-I-2	7.14	7768	-0.169	-0.096	0.023	0.042	0.000000	0.000000	-772.26	-1005.93
1	FID		ACIS-I-4	7.10	7769	0.310	0.117	0.033	0.053	0.000000	0.000000	2142.18	900.39
2	FID		ACIS-I-5	7.19	7769	-0.240	0.048	0.031	0.056	0.000000	0.000000	-1825.72	897.18
3	GUIDE	used	955134752	8.15	15535	0.082	0.543	0.075	0.121	209.098556	-35.103724	-1476.68	-2300.23
4	GUIDE	used	955264408	6.97	15537	0.355	0.067	0.073	0.116	209.285083	-34.903809	-613.20	-2027.98
5	GUIDE	used	955123536	7.98	15534	0.482	-0.221	0.097	0.175	208.368165	-34.619542	-2251.70	361.42
6	GUIDE	used	955261056	7.74	15536	-0.873	-0.143	0.077	0.124	209.514661	-33.977405	1865.78	303.87
7	GUIDE	used	955261840	7.48	15537	-0.045	-0.246	0.076	0.122	209.654104	-34.397010	1331.95	-1168.82

2.4 Star Slots

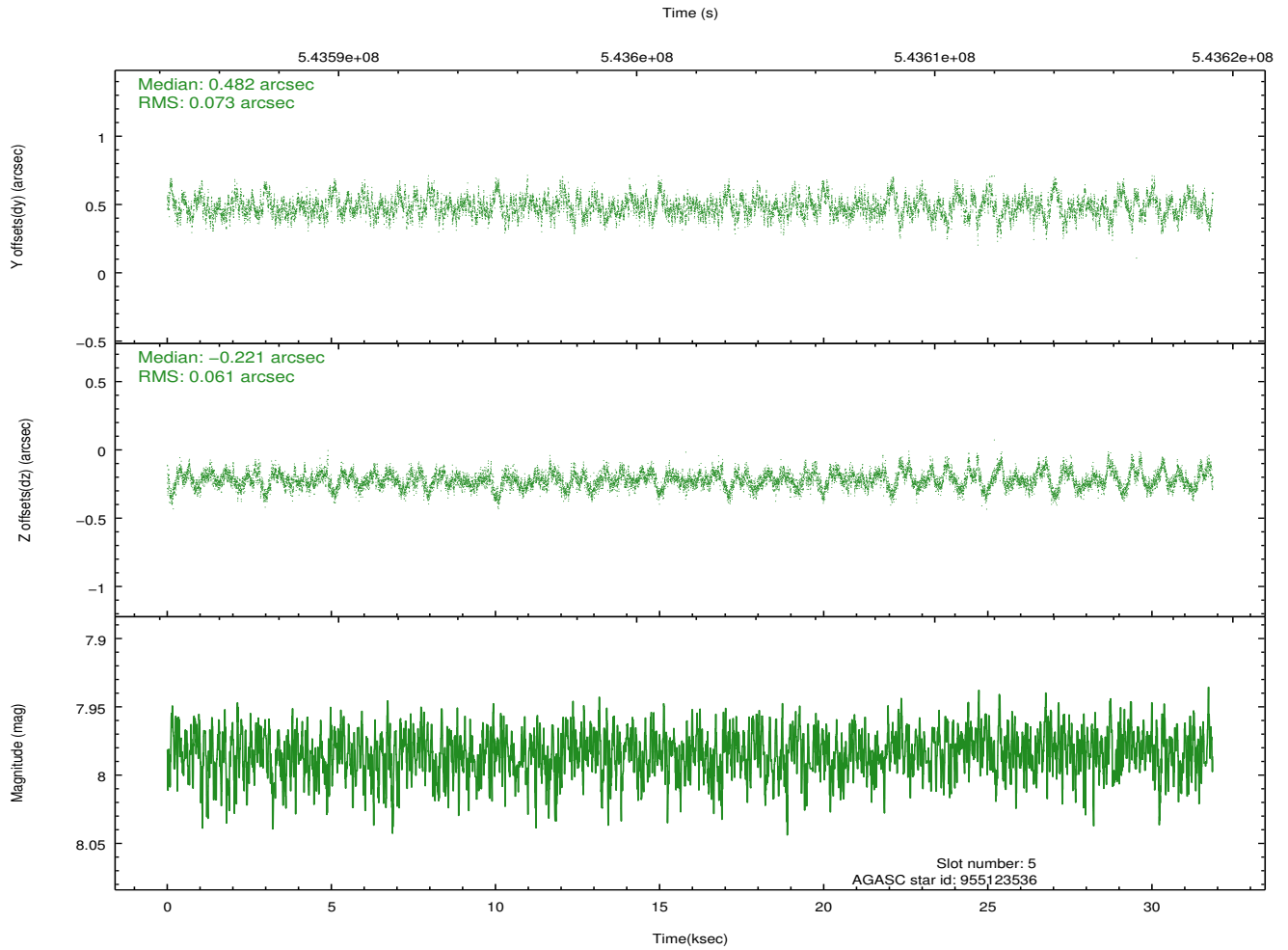
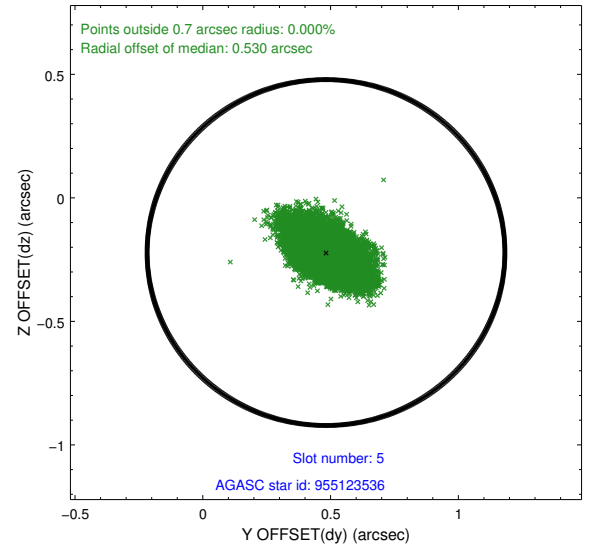
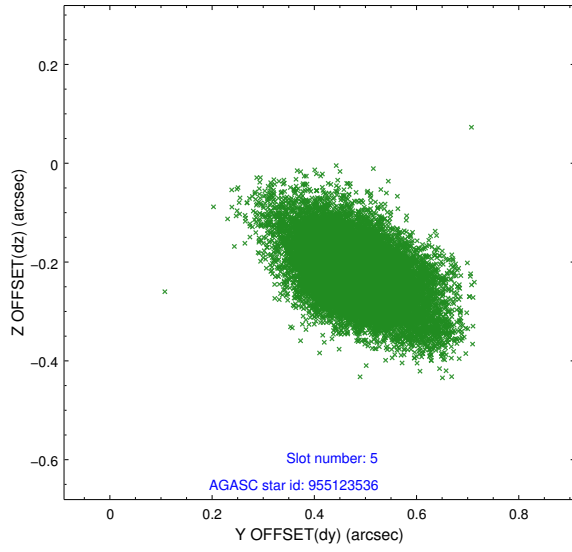
2.4.1 Slot 3



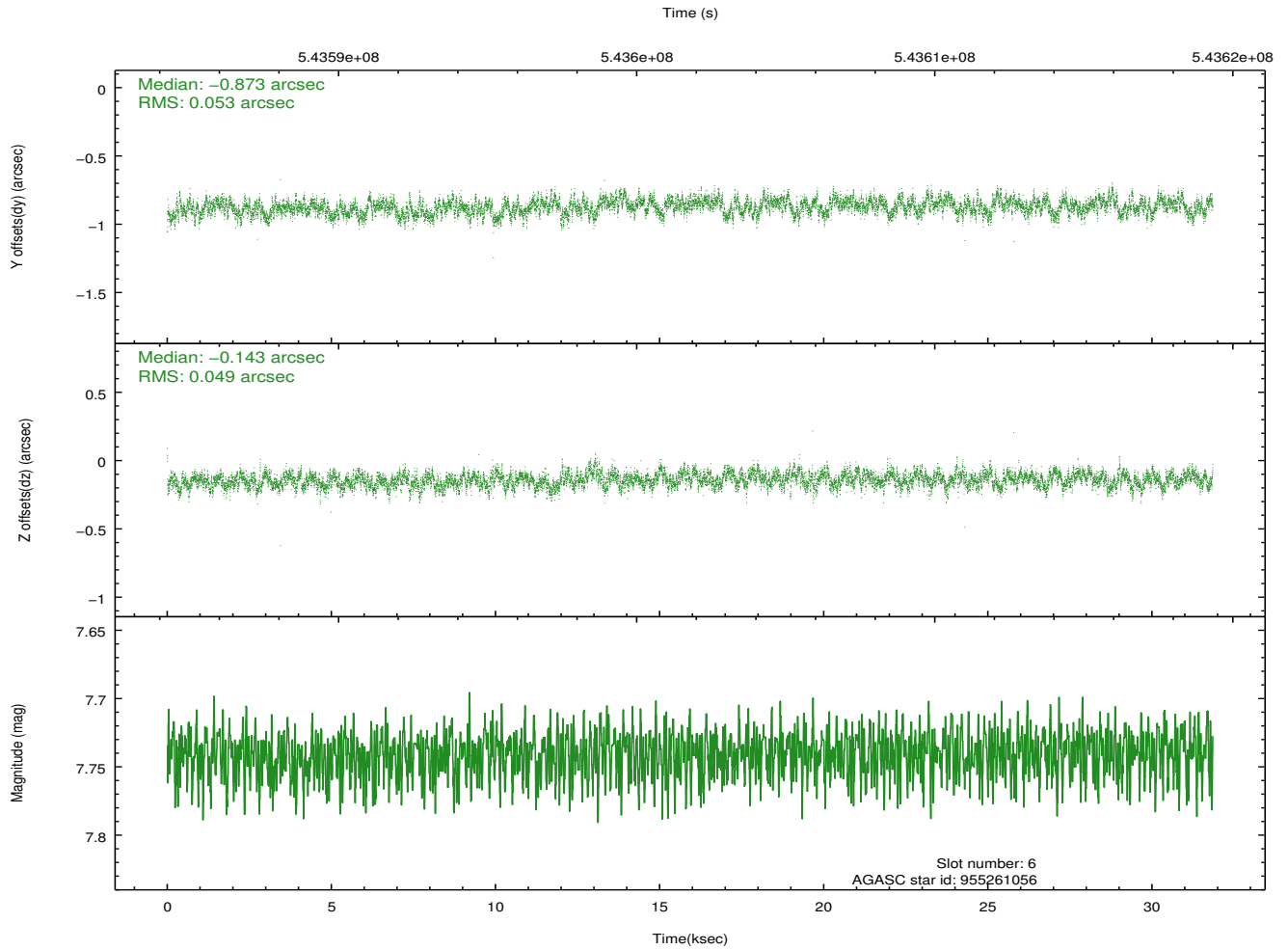
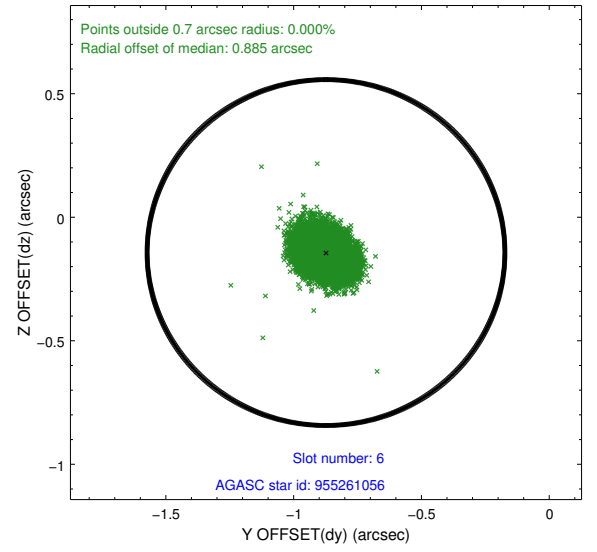
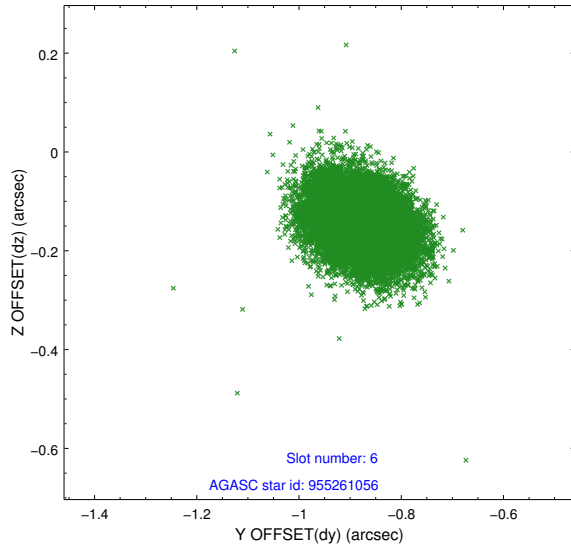
2.4.2 Slot 4



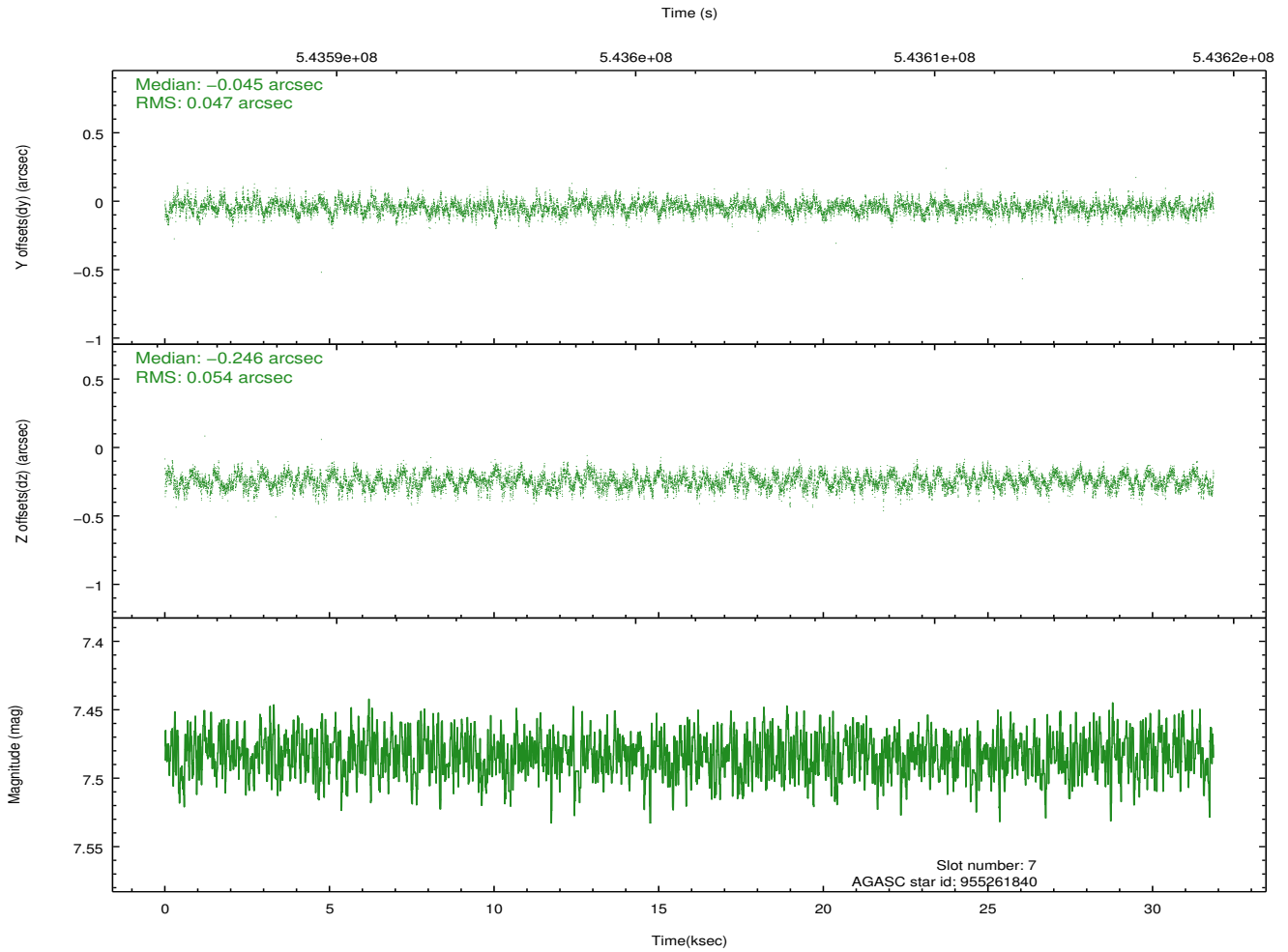
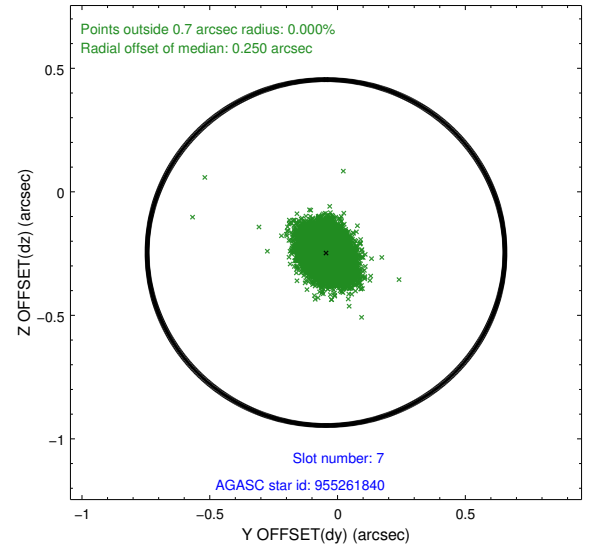
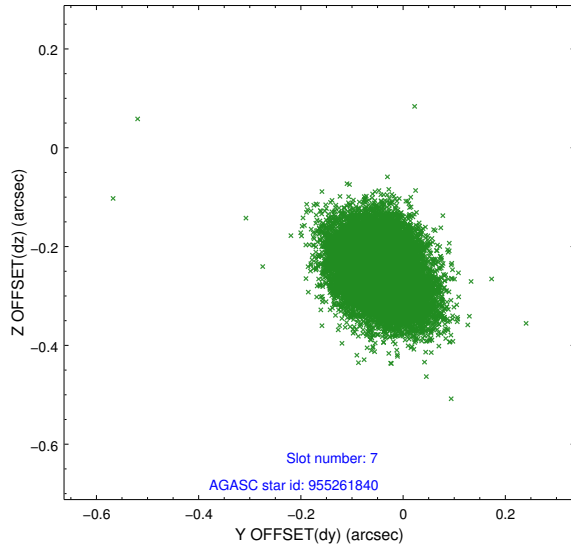
2.4.3 Slot 5



2.4.4 Slot 6

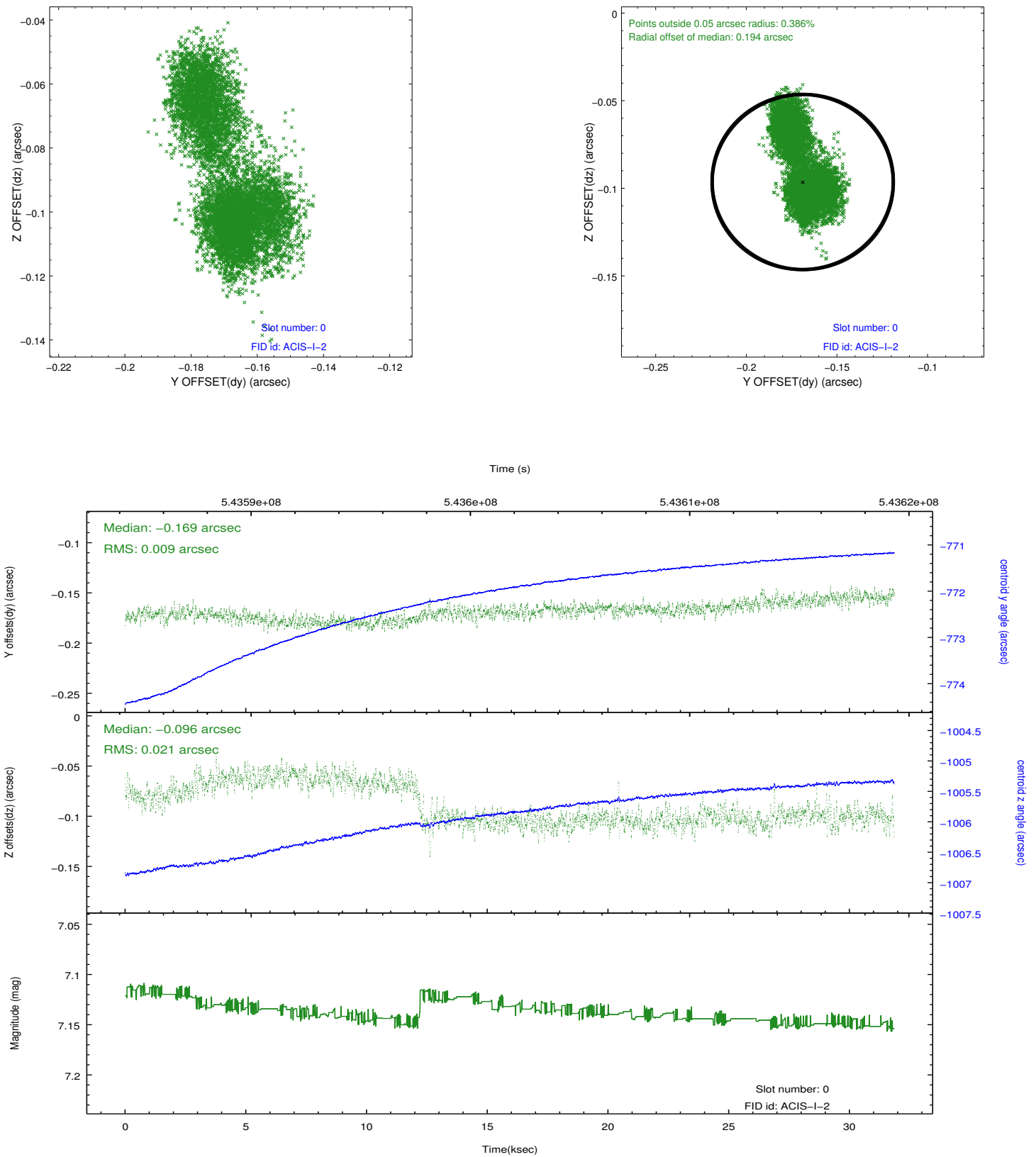


2.4.5 Slot 7

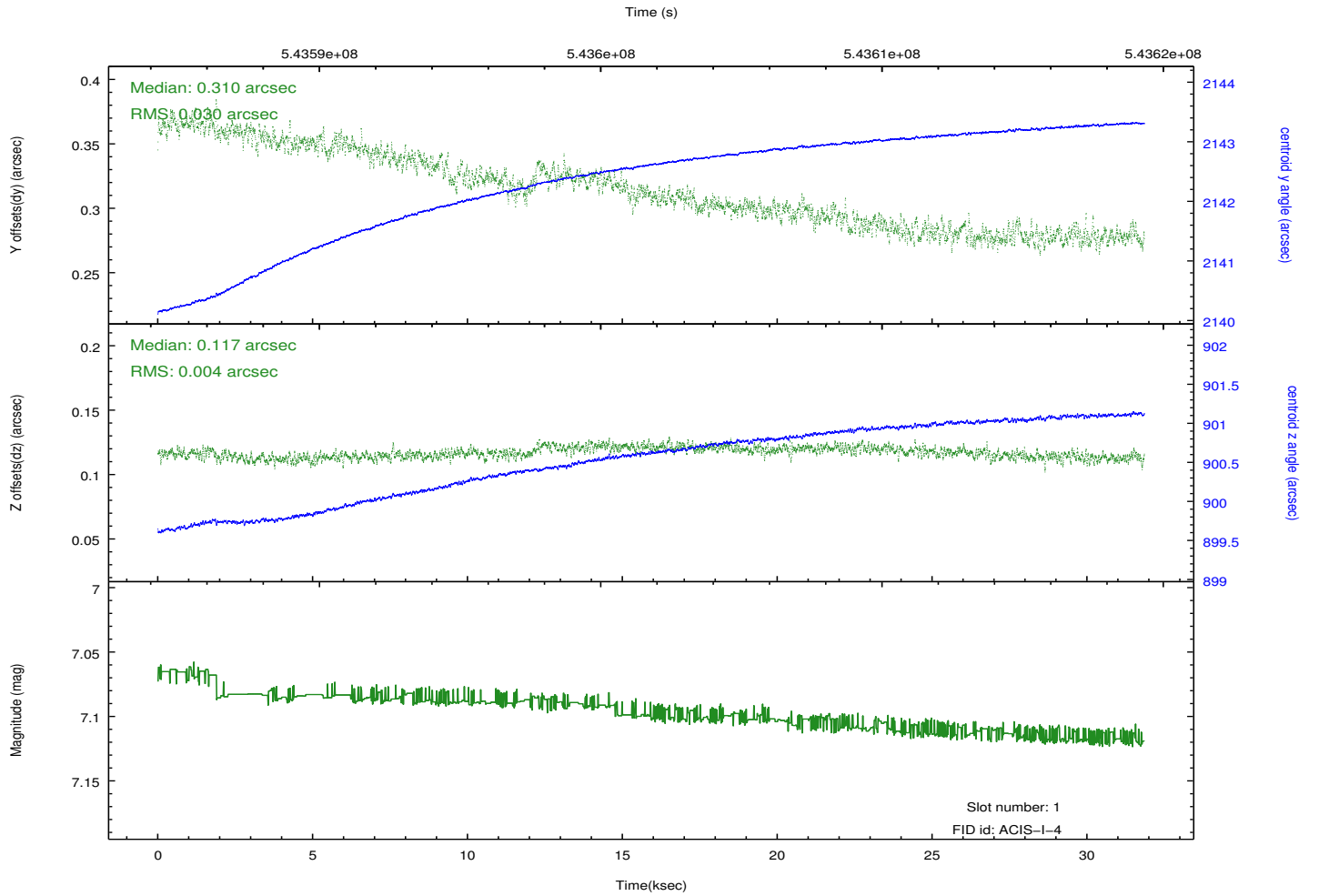
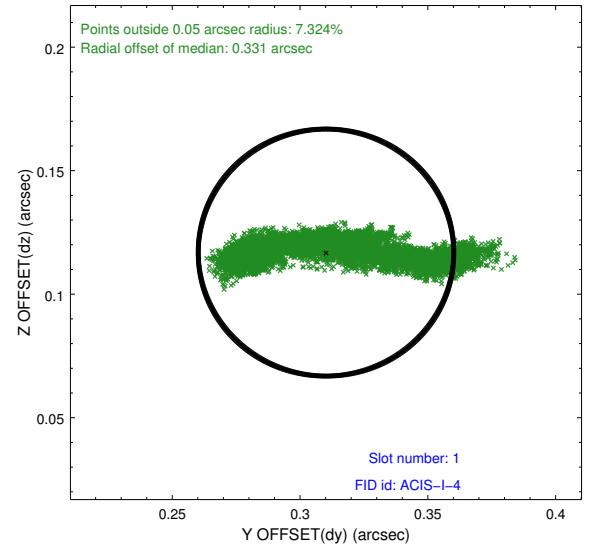
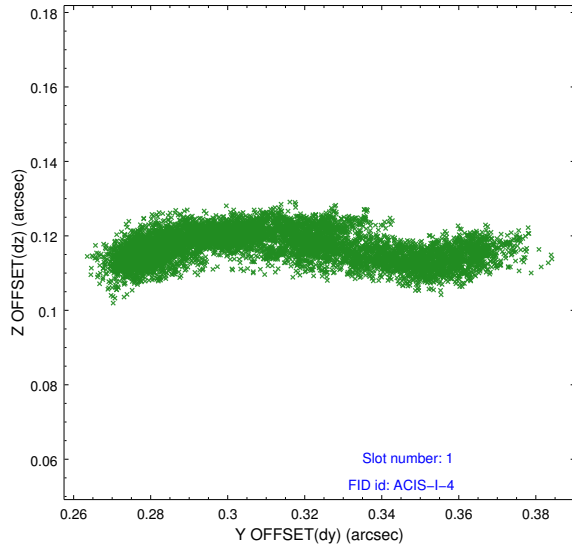


2.5 FID Slots

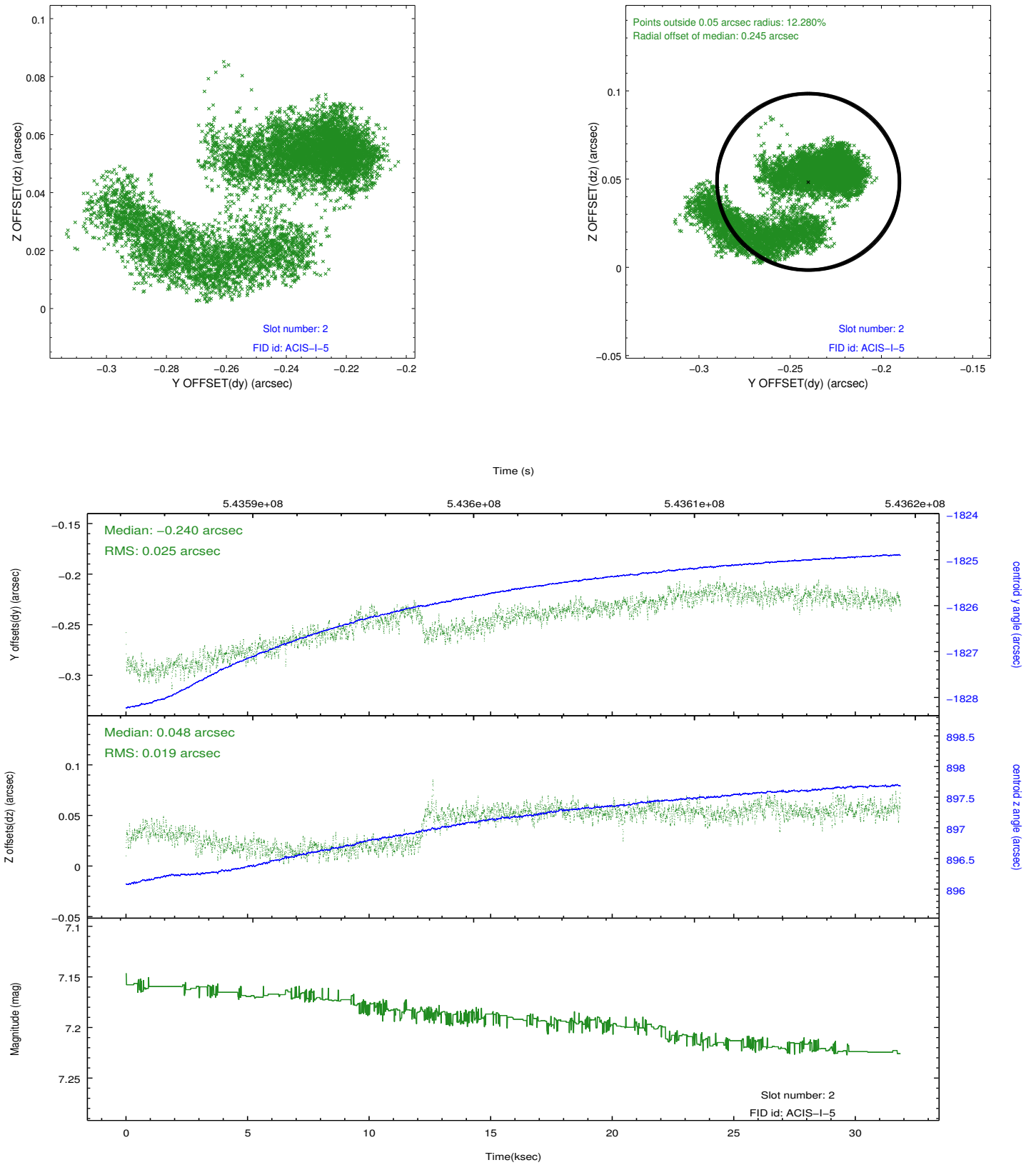
2.5.1 Slot 0



2.5.2 Slot 1



2.5.3 Slot 2



A Summary

A.1 Status

V&V Scientist	Beth Sundheim
V&V Date (YYYY-MM-DD)	2015.03.25
V&V Edition	1
V&V Disposition and Status	OK
V&V Charge Time	31.052700238943

A.2 Comments