

V&V Reference Report

L2 ASCDS Version : 10.4.1

Observation 17120 - L2 Version 2
Chandra X-Ray Center

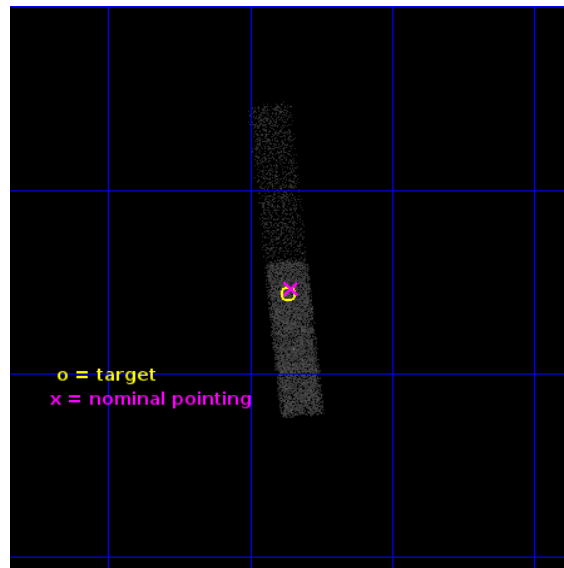
L2 Processing Date : Oct 1 2015

Contents

1	Front	2
2	OBI	3
2.1	OBI	3
2.1.1	Images	3
2.1.2	Bias	3
2.1.3	Parameters	4
2.1.4	Events	4
2.2	Compared Parameters	5
2.3	Aspect	6
2.4	Star Slots	9
2.4.1	Slot 3	9
2.4.2	Slot 5	10
2.4.3	Slot 6	11
2.4.4	Slot 7	12
2.5	FID Slots	13
2.5.1	Slot 0	13
2.5.2	Slot 1	14
2.5.3	Slot 2	15
A	Summary	16
A.1	Status	16
A.2	Comments	16

1 Front

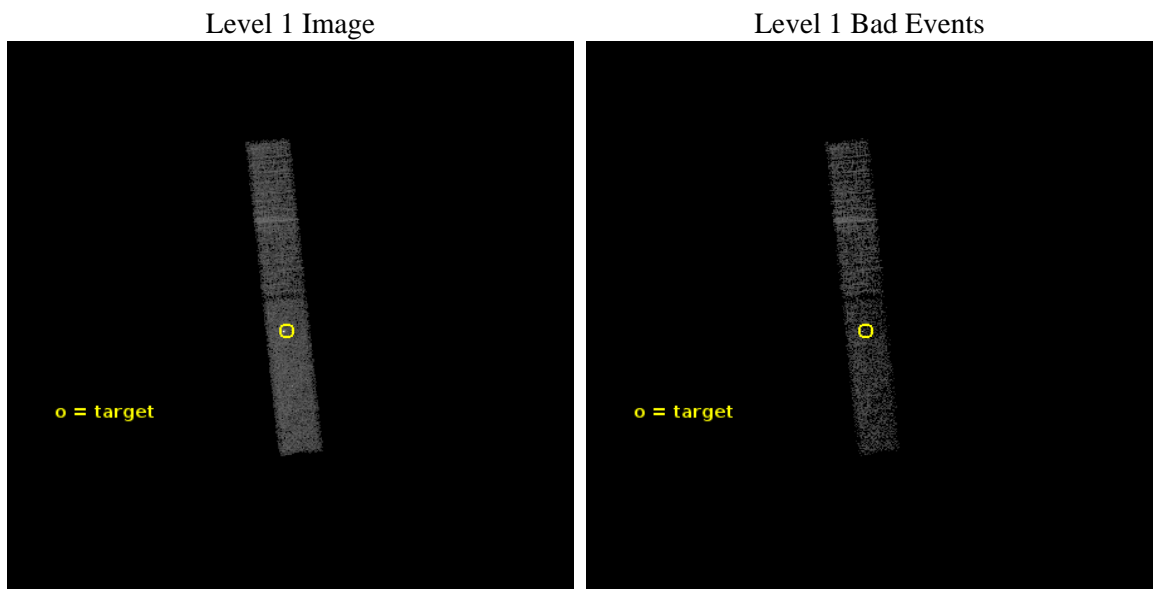
seq_num	703119	Sequence number
obs_id	17120	Observation id
title	UNCOVERING AGN FUELING AND FEEDBACK IN DWARF GALAXIES	Proposal tit
observer	Professor Richard Mushotzky	Principal investigator
object	IRAS04124-0803	Source name
dtcycle	0	
cycle	P	events from which exps? Prim/Second/Both
ra_targ	63.716667	Observer's specified target RA [deg]
dec_targ	-7.9275	Observer's specified target Dec [deg]
ra_nom	63.713612537773	Nominal RA [deg]
dec_nom	-7.9229806409143	Nominal Dec [deg]
roll_nom	84.136678870331	Nominal Roll [deg]
revision	2	Processing version of data
ontime	10097.999732375	Sum of GTIs [s]
livetime	9657.6125979104	Livetime [s]
ontime6	10097.999732375	Sum of GTIs [s]
ontime7	10097.999732375	Sum of GTIs [s]
l2events	13280	Number of level 2 events



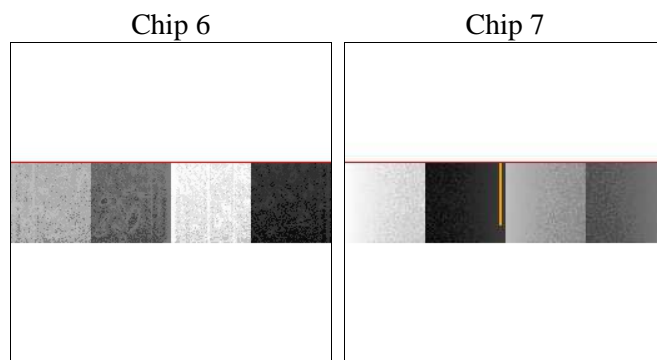
2 OBI

2.1 OBI

2.1.1 Images



2.1.2 Bias



2.1.3 Parameters

obi_num	2	Obi number	sched_exp_time	10000.000000	[s] Scheduled observation exposure time
ascdsver	10.4.2.1	Processing system revision	ontime	10097.999732375	Sum of GTIs [s]
caldsver	4.6.10a	 	ontime6	10097.999732375	Sum of GTIs [s]
date	2015-10-01T22:05:40	Date and time of file creation	ontime7	10097.999732375	Sum of GTIs [s]
revision	2	Processing version of data	l1events	38914	Number of level 1 events

2.1.4 Events

	ccd 6	ccd 7
level 1 events	16549	22365
rejected events	14606	10443
rejected %	88%	46%

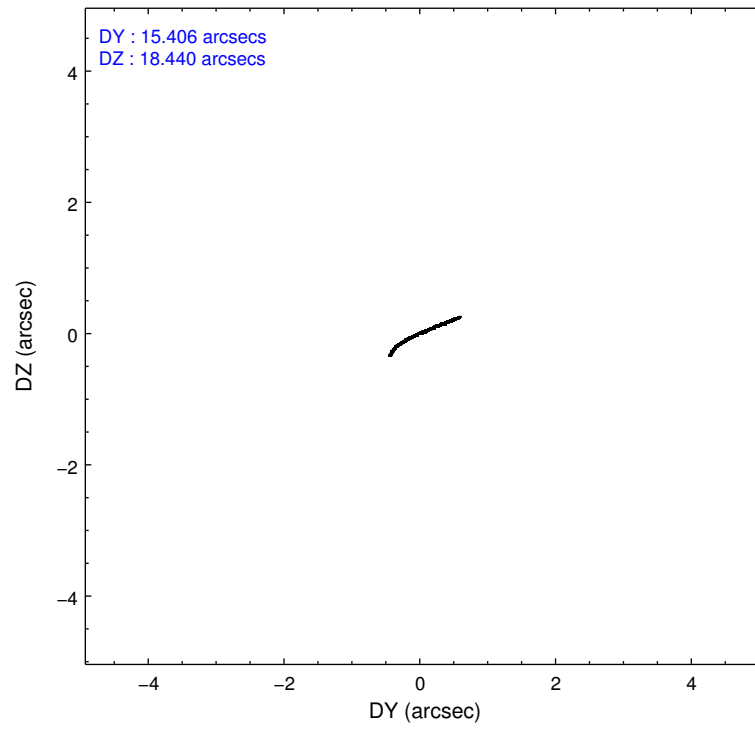
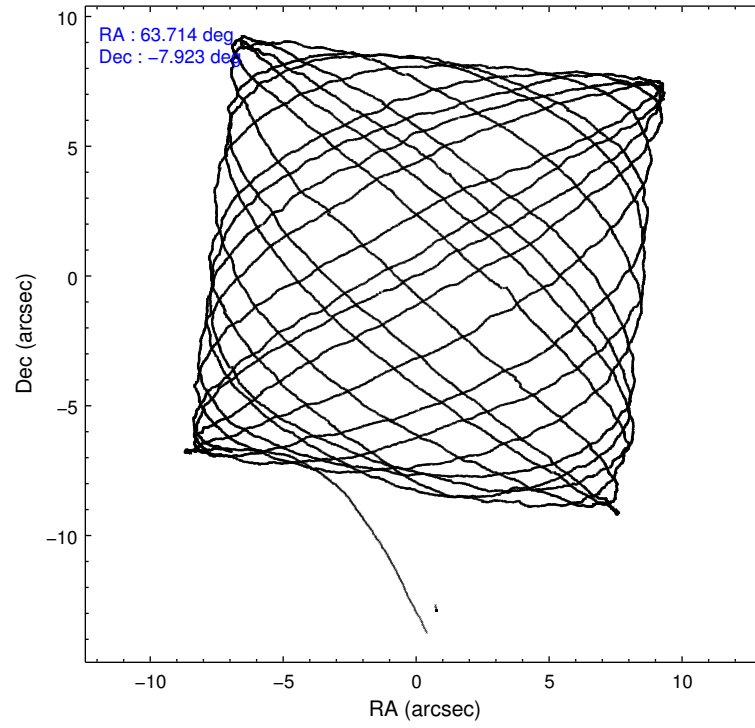
	ccd 6	ccd 7
grade 0 events	576	1512
	3%	6%
grade 1 events	3	45
	0%	0%
grade 2 events	360	2503
	2%	11%
grade 3 events	267	1266
	1%	5%
grade 4 events	321	1293
	1%	5%
grade 5 events	690	2131
	4%	9%
grade 6 events	419	5348
	2%	23%
grade 7 events	13913	8267
	84%	36%

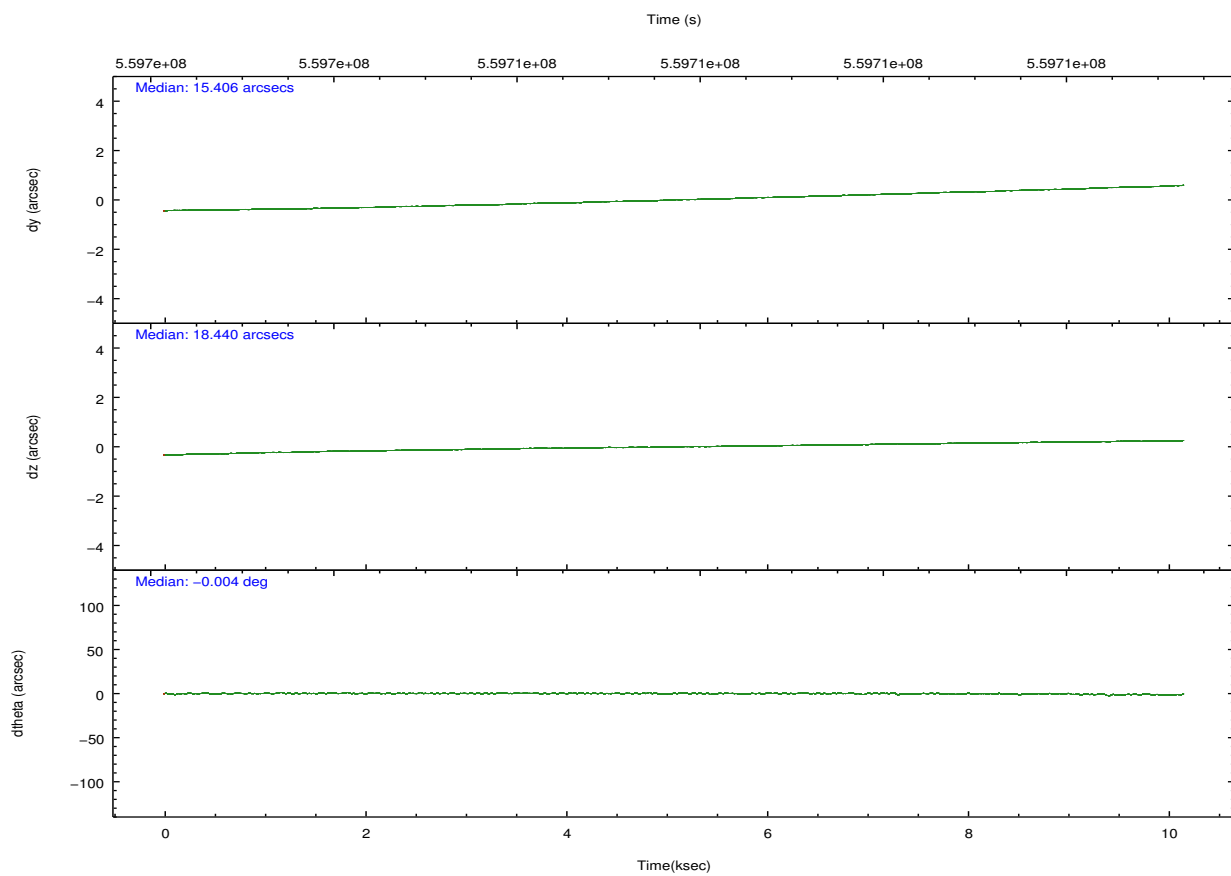
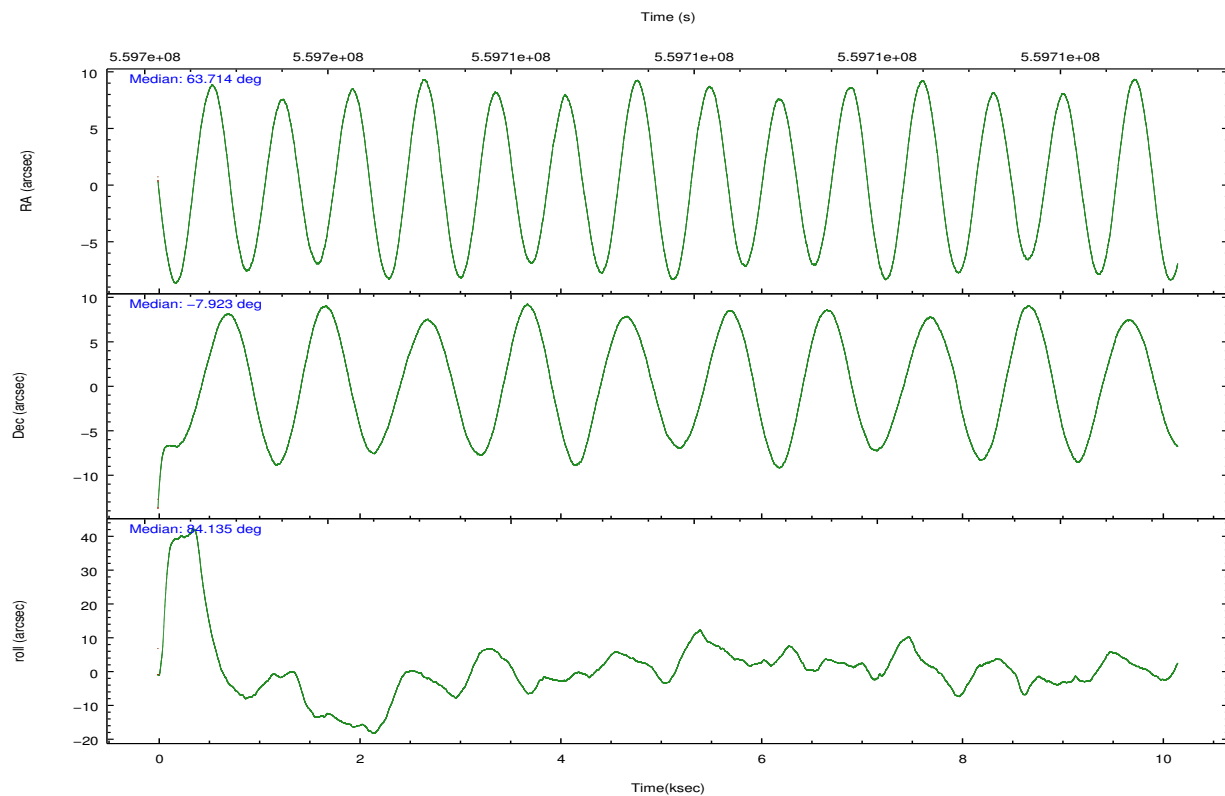
2.2 Compared Parameters

Parameter	Planned	Actual
Instrument	ACIS	ACIS
Detector	ACIS-67	ACIS-67
Grating	NONE	NONE
Data mode	FAINT	FAINT
Observation mode	POINTING	POINTING
[deg] Pointing RA	63.725331	63.71361253777339
[deg] Pointing Dec	-7.947842	-7.922980640914275
[deg] Pointing Roll	83.981732	84.1366788703312
[mm] SIM focus pos	-0.684267	-0.6828225247311905
[mm] SIM defocus	0	0.001444936568705701
[mm] SIM translation stage pos	-190.132523	-190.1400660498719
[mm] SIM translation stage offset	0	0.00754346686406393
[s] Observation start time (MET)	559702800.184000	559701365.4702801
Observation start date	2015-09-27T00:58:52	2015-09-27T00:36:05
[s] Observation end time (MET)	559712800.184000	559713328.24595
Observation end date	2015-09-27T03:45:32	2015-09-27T03:55:28
Read mode	TIMED	TIMED

Parameter	Planned	Actual
Obspar format version number	7	7
Obspar file type	PREDICTED	ACTUAL
Obspar update status	NONE	UPDATED
Number of optional ACIS chips dropped	0	0
On-chip summing requested	N	N
Subarray requested	CUSTOM	1/4
Subarray start row	385	385
Subarray row count	256	256
Alternating exposures requested	N	N
[s] Primary exposure time	0.000000	0.9

2.3 Aspect



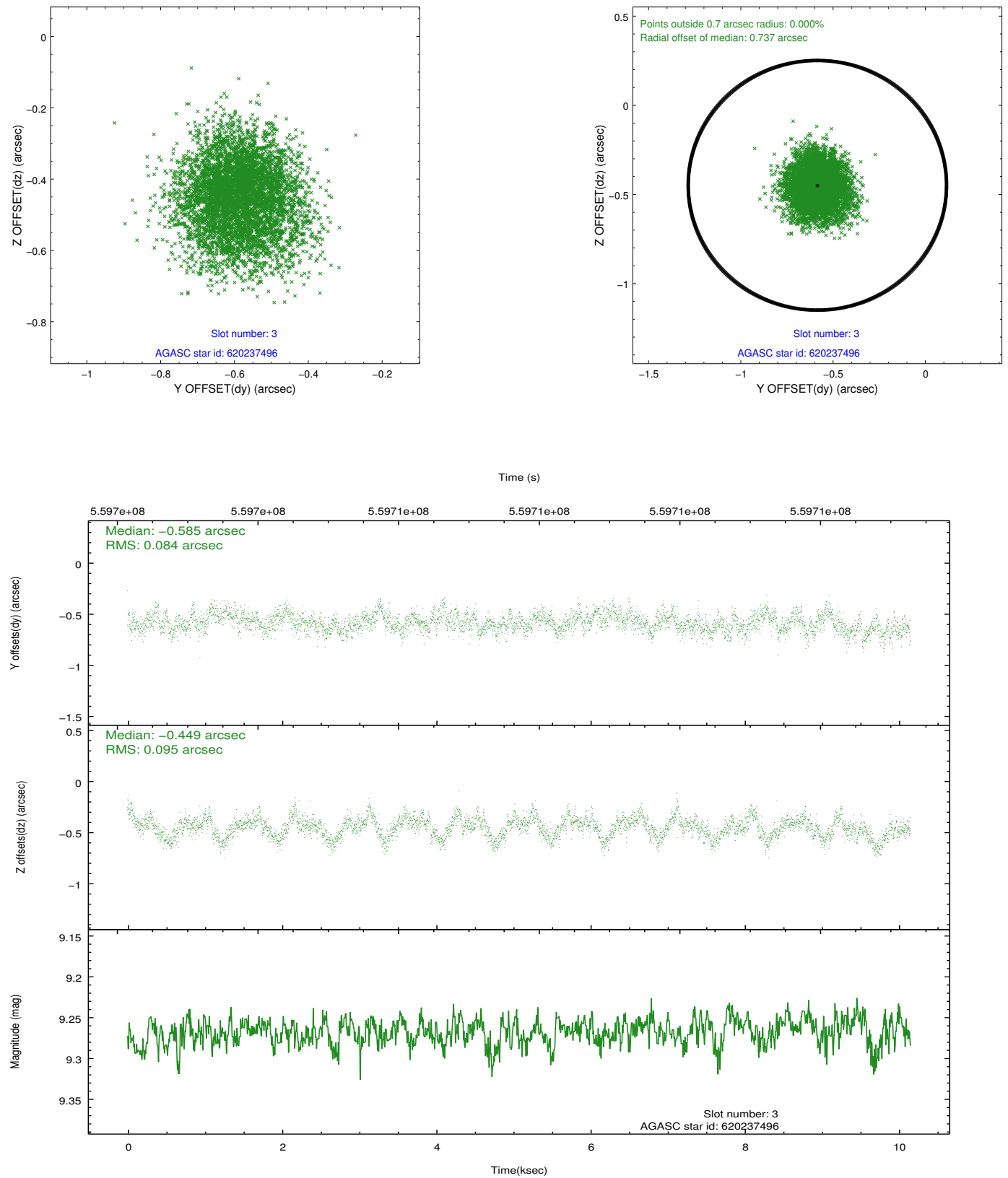


Slot Statistics

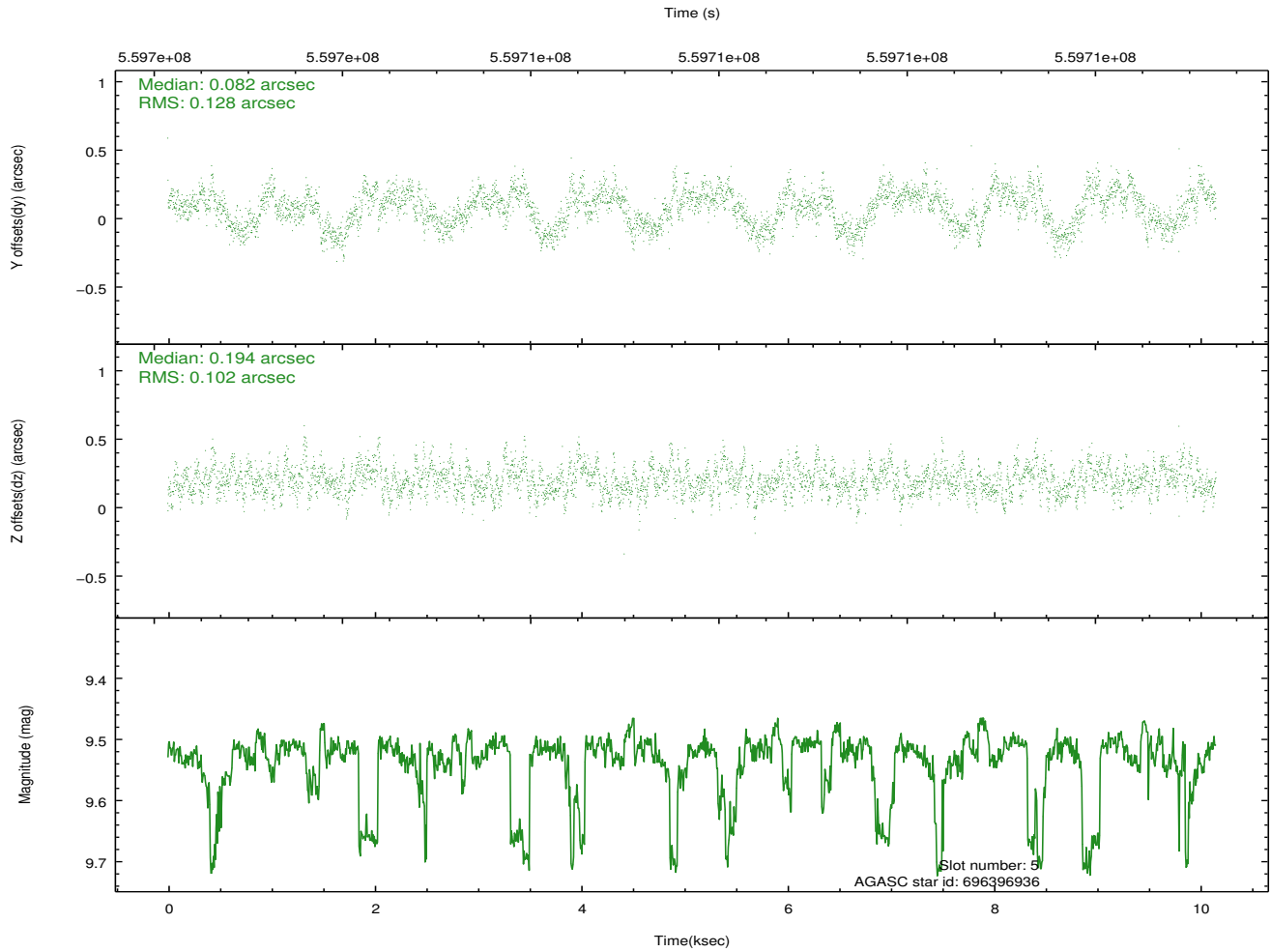
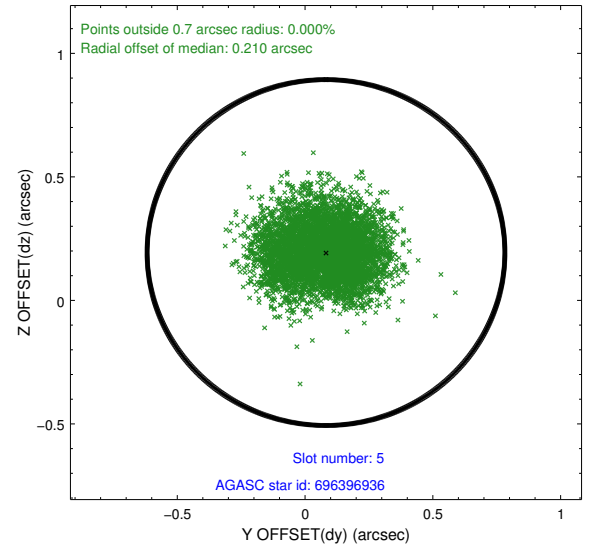
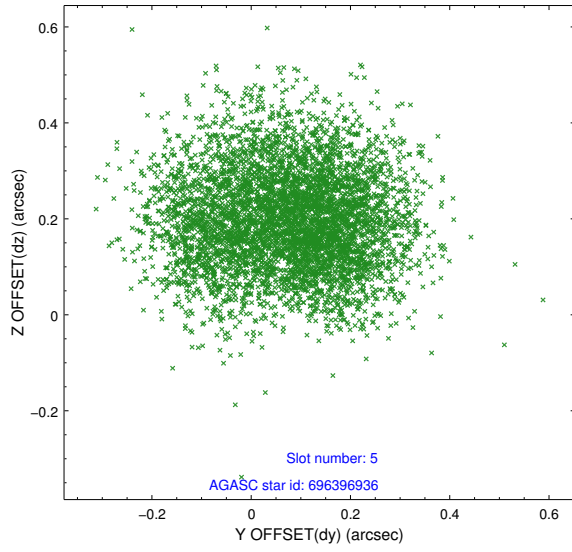
slot	status	used	id	mag	n_pts	med_dy	med_dz	dr1	dr2	ra	dec	mean_y	mean_z
0	FID		ACIS-S-2	7.12	2478	-0.175	-0.143	0.008	0.013	0.000000	0.000000	-768.59	-1740.04
1	FID		ACIS-S-4	7.21	2478	0.440	0.123	0.007	0.013	0.000000	0.000000	2145.07	168.15
2	FID		ACIS-S-5	7.24	2478	-0.297	0.029	0.008	0.015	0.000000	0.000000	-1820.88	162.35
3	GUIDE	used	620237496	9.27	4950	-0.585	-0.449	0.137	0.219	63.658819	-7.343772	2137.88	463.74
4	OMITTED			0.00	0	0.000	0.000	0.000	0.000	0.000000	0.000000	0.00	0.00
5	GUIDE	used	696396936	9.53	4946	0.082	0.194	0.178	0.276	64.408369	-7.644185	1342.27	-2309.64
6	GUIDE	used	696400656	9.56	4948	0.241	0.164	0.202	0.292	63.865880	-8.209714	-884.79	-597.48
7	GUIDE	used	696405832	8.58	4953	0.256	0.096	0.100	0.154	64.059688	-8.200383	-778.87	-1280.31

2.4 Star Slots

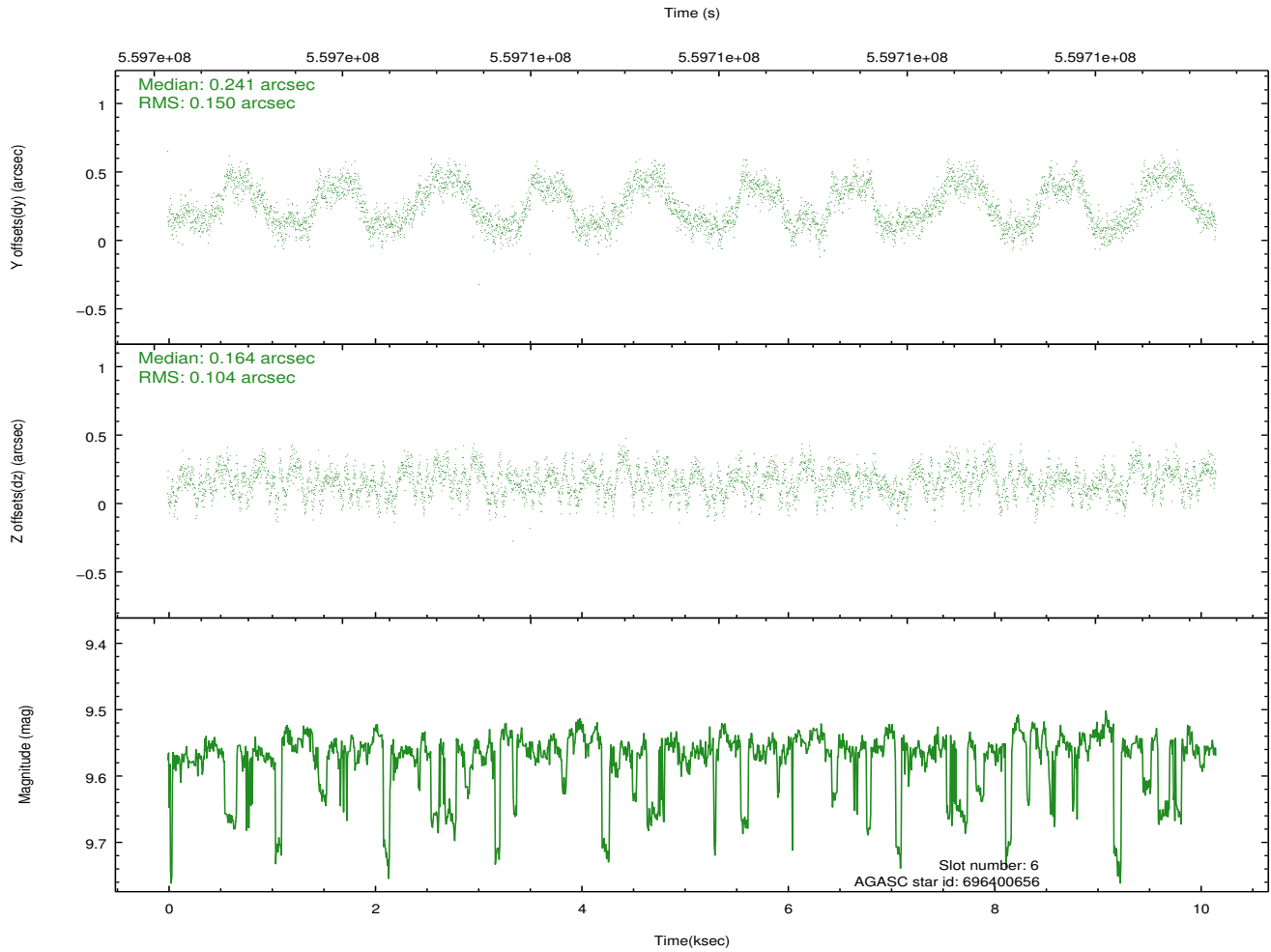
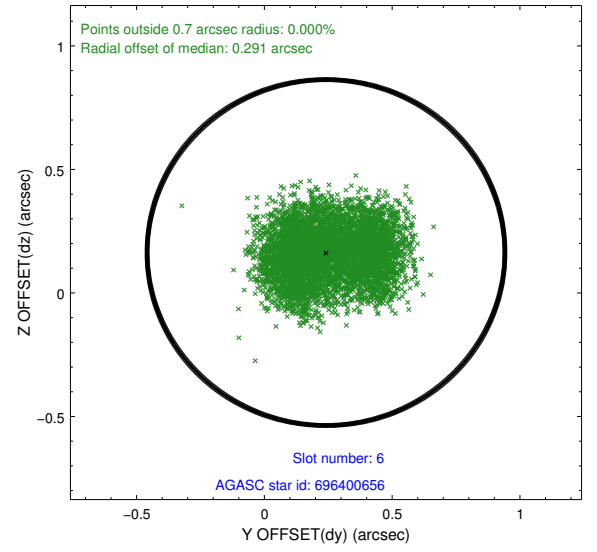
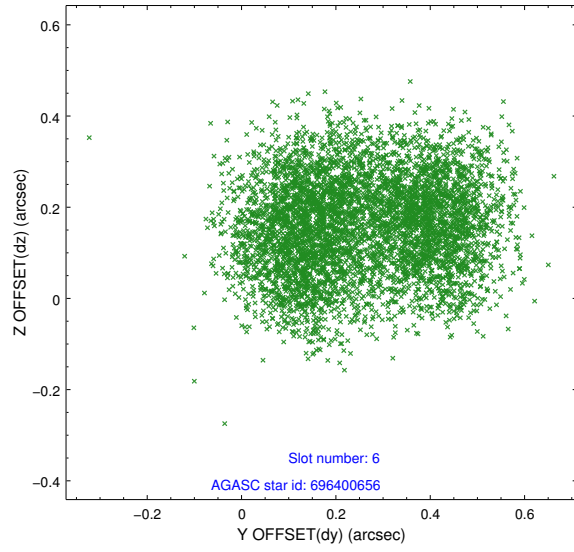
2.4.1 Slot 3



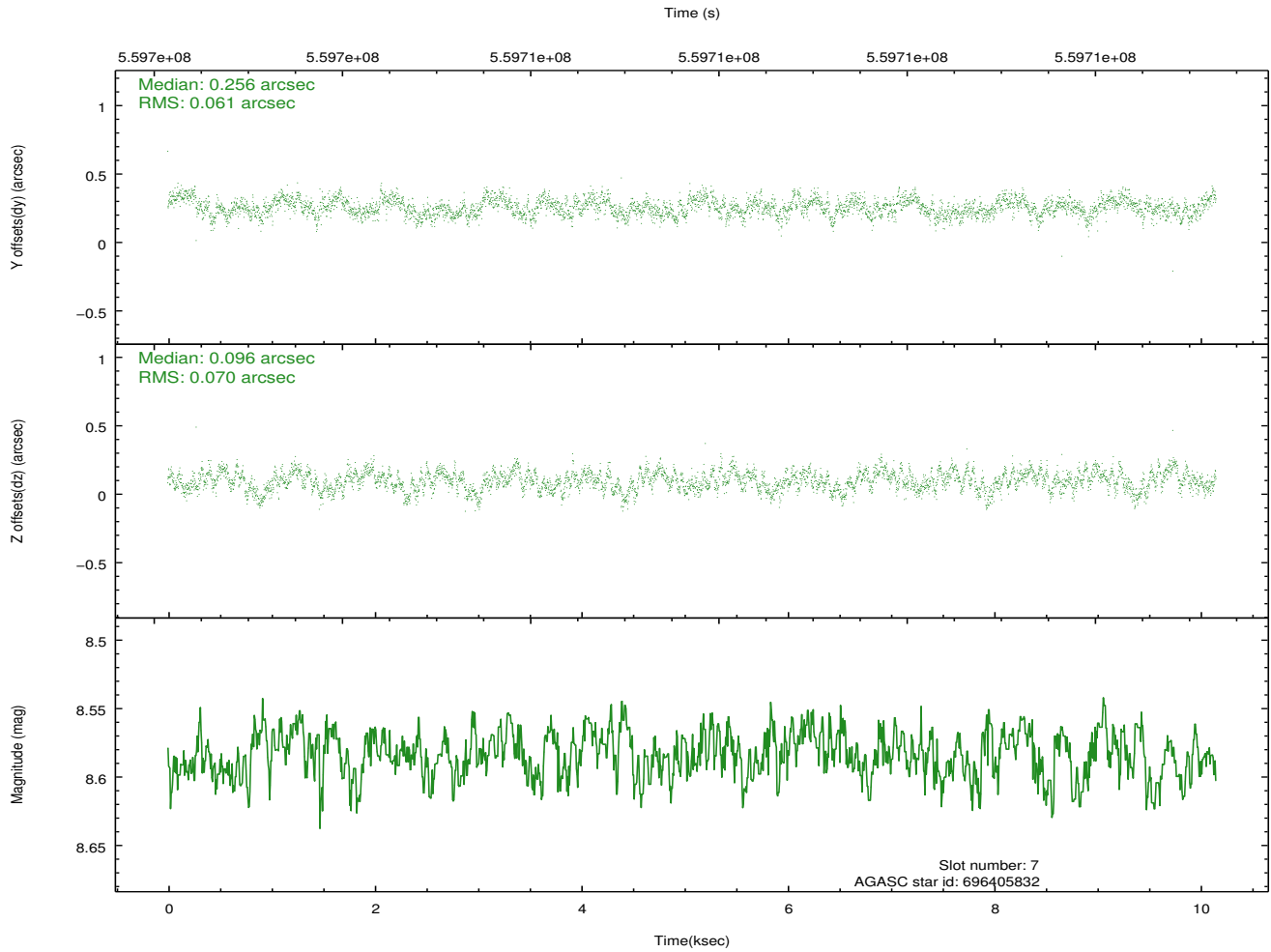
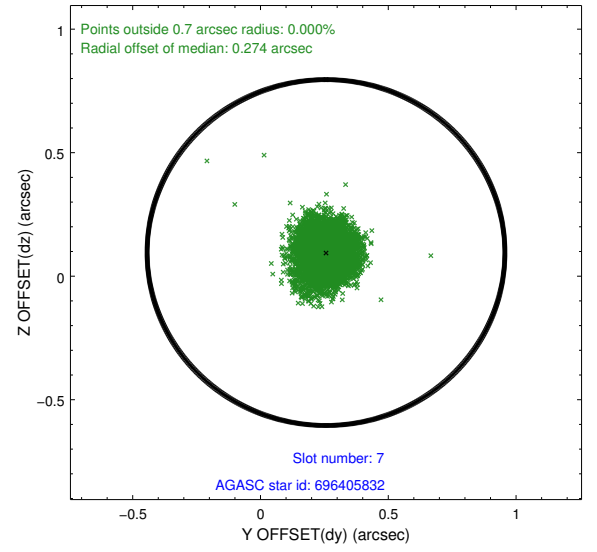
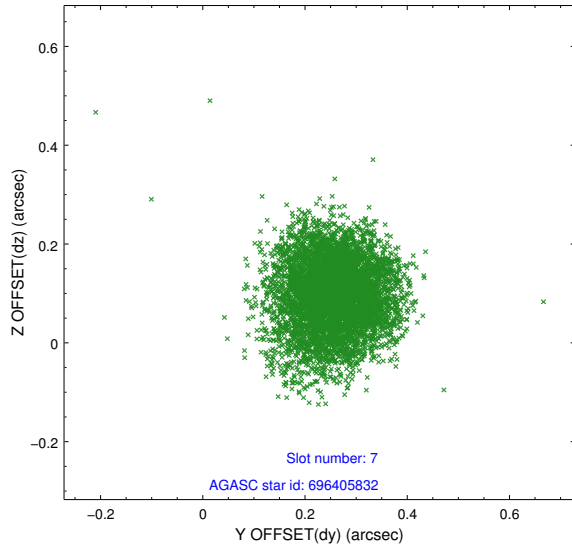
2.4.2 Slot 5



2.4.3 Slot 6

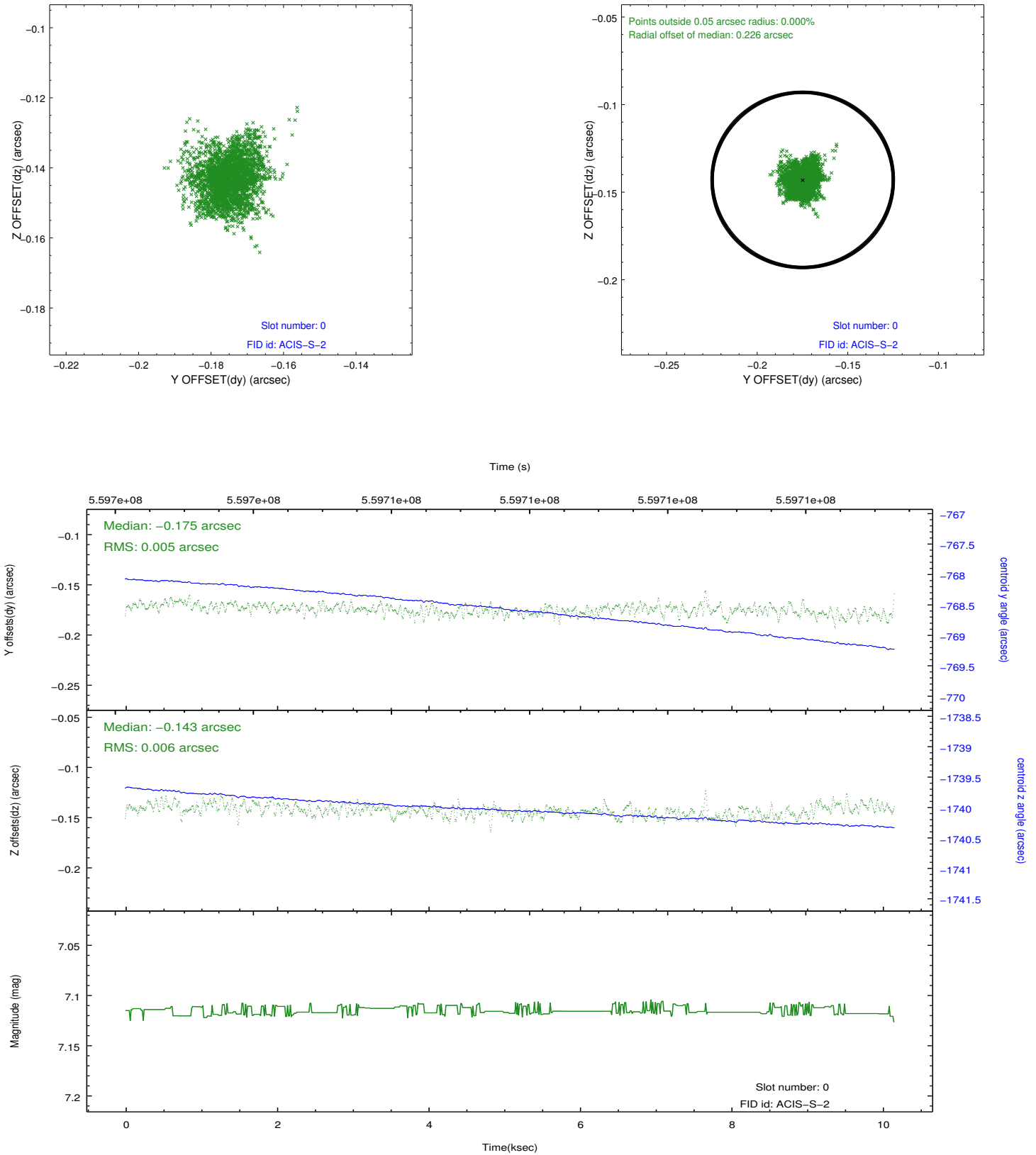


2.4.4 Slot 7

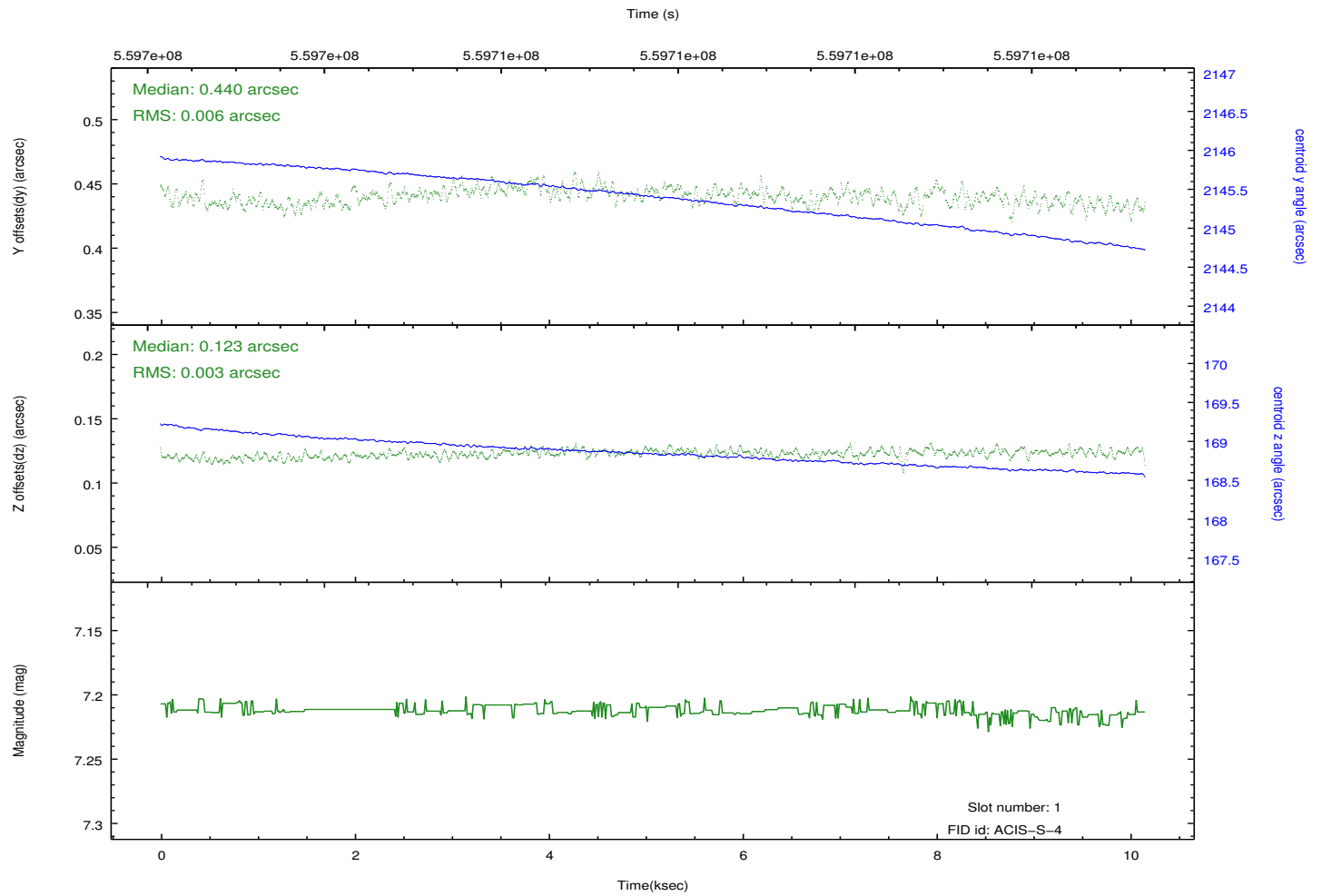
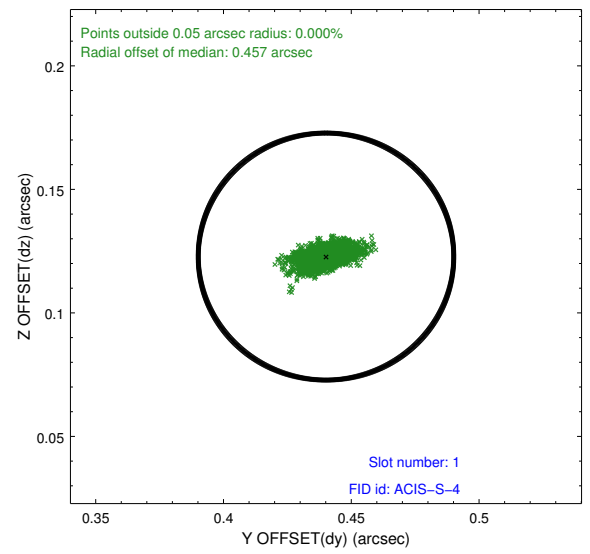
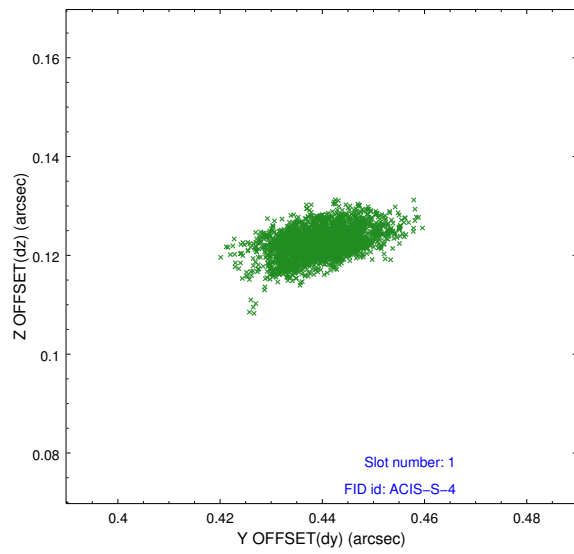


2.5 FID Slots

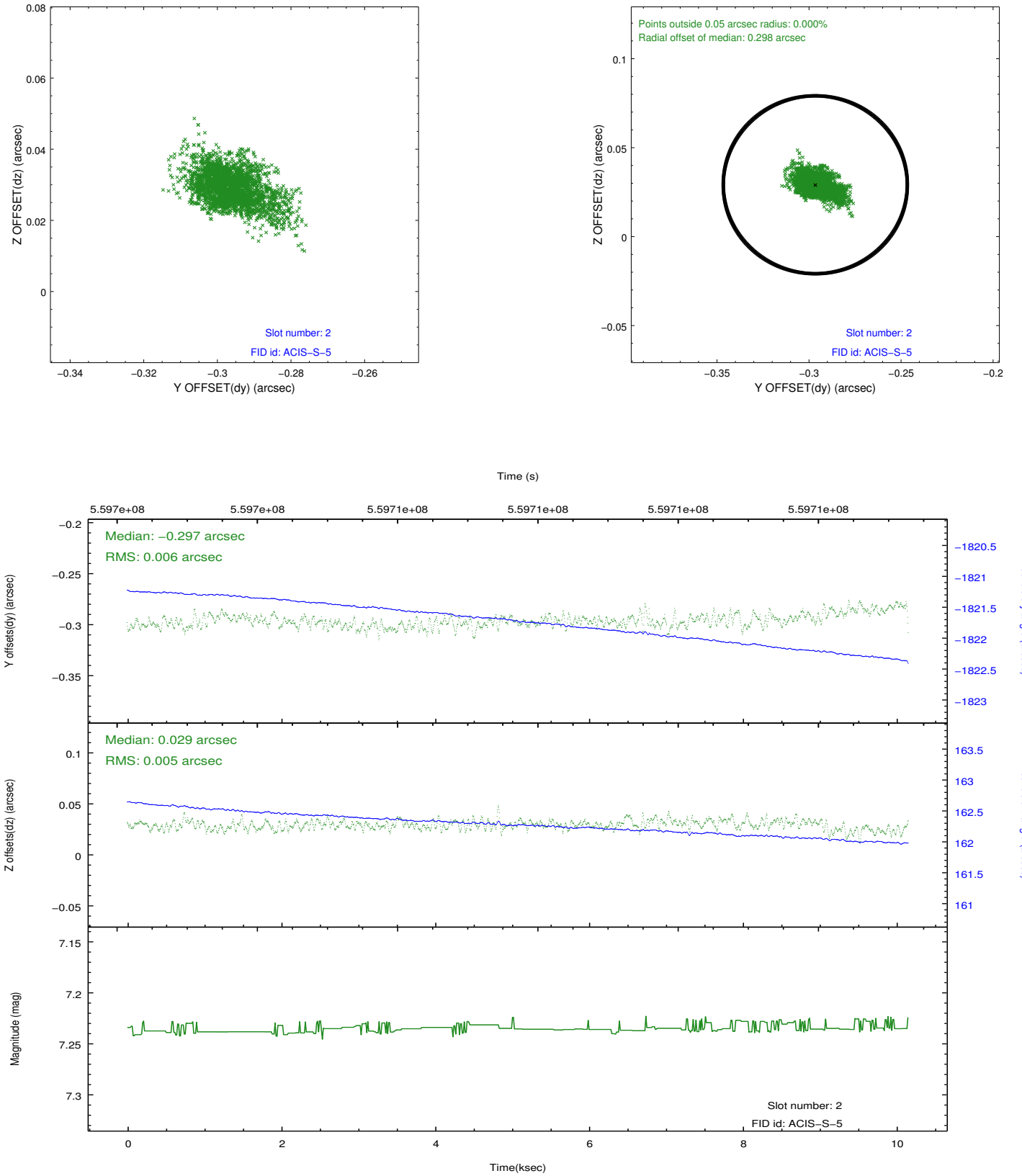
2.5.1 Slot 0



2.5.2 Slot 1



2.5.3 Slot 2



A Summary

A.1 Status

V&V Scientist	Beth Sundheim
V&V Date (YYYY-MM-DD)	2015.10.02
V&V Edition	1
V&V Disposition and Status	OK
V&V Charge Time	10.097999732375

A.2 Comments

The guide star in slot 4 was removed from the aspect solution due to poor data quality. The aspect solution is improved by the removal of this star from the solution.