

V&V Reference Report

L2 ASCDS Version : 10.4

Observation 17060 - L2 Version 1
Chandra X-Ray Center

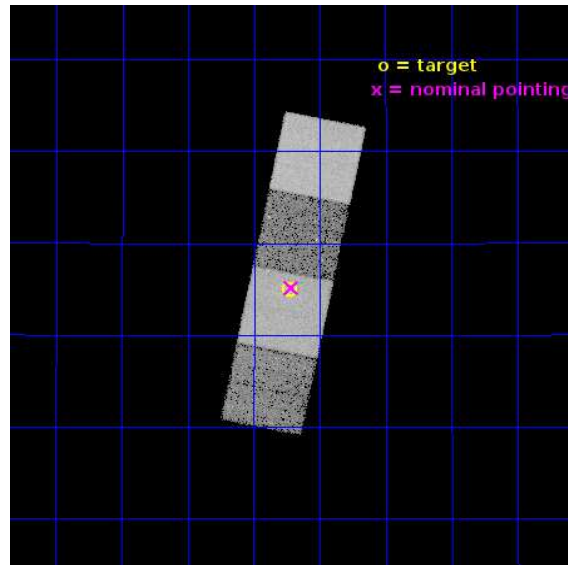
L2 Processing Date : Jun 21 2015

Contents

1	Front	2
2	OBI	3
2.1	OBI	3
2.1.1	Images	3
2.1.2	Bias	3
2.1.3	Parameters	4
2.1.4	Events	4
2.2	Compared Parameters	5
2.3	Aspect	6
2.4	Star Slots	9
2.4.1	Slot 3	9
2.4.2	Slot 4	10
2.4.3	Slot 5	11
2.4.4	Slot 6	12
2.4.5	Slot 7	13
2.5	FID Slots	14
2.5.1	Slot 0	14
2.5.2	Slot 1	15
2.5.3	Slot 2	16
A	Summary	17
A.1	Status	17
A.2	Comments	17

1 Front

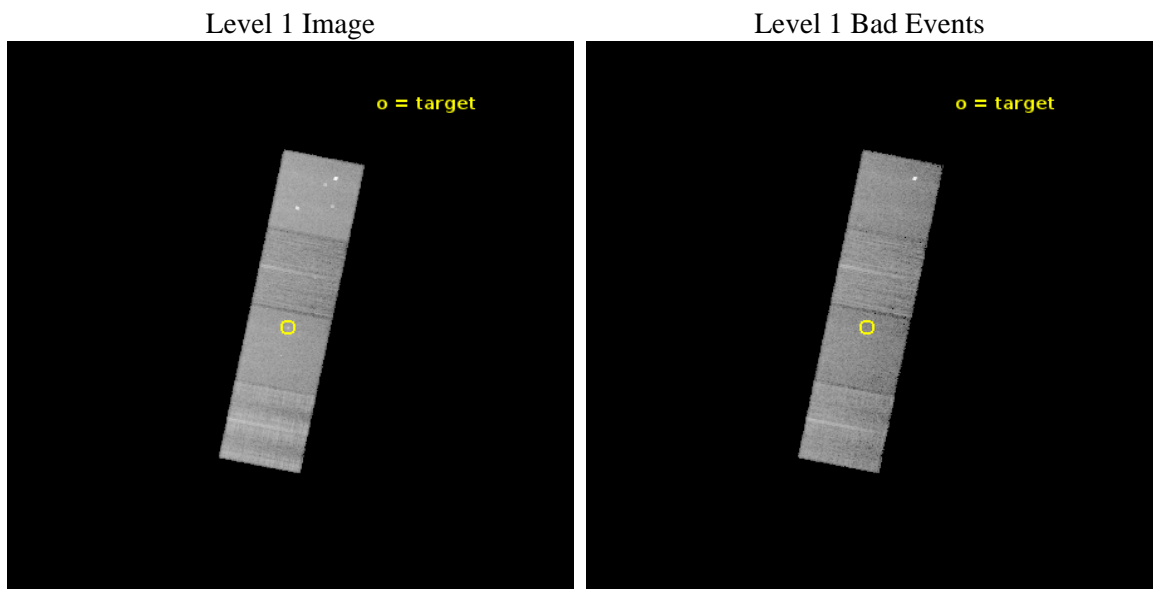
seq_num	703064	Sequence number
obs_id	17060	Observation id
title	ULTRAMASSIVE BLACK HOLES: FUNDAMENTAL PLANE AND CORONAE	Proposal t
observer	Dr. Kayhan Gultekin	Principal investigator
object	IC 1802	Source name
dtcycle	0	
cycle	P	events from which exps? Prim/Second/Both
ra_targ	37.308333	Observer's specified target RA [deg]
dec_targ	23.082667	Observer's specified target Dec [deg]
ra_nom	37.303755718507	Nominal RA [deg]
dec_nom	23.086119958493	Nominal Dec [deg]
roll_nom	101.42273603339	Nominal Roll [deg]
revision	1	Processing version of data
ontime	17056.200131297	Sum of GTIs [s]
livetime	16833.34831999	Livetime [s]
ontime5	17056.200131297	Sum of GTIs [s]
ontime6	17056.200131297	Sum of GTIs [s]
ontime7	17056.200131297	Sum of GTIs [s]
ontime8	17056.200131297	Sum of GTIs [s]
l2events	143292	Number of level 2 events



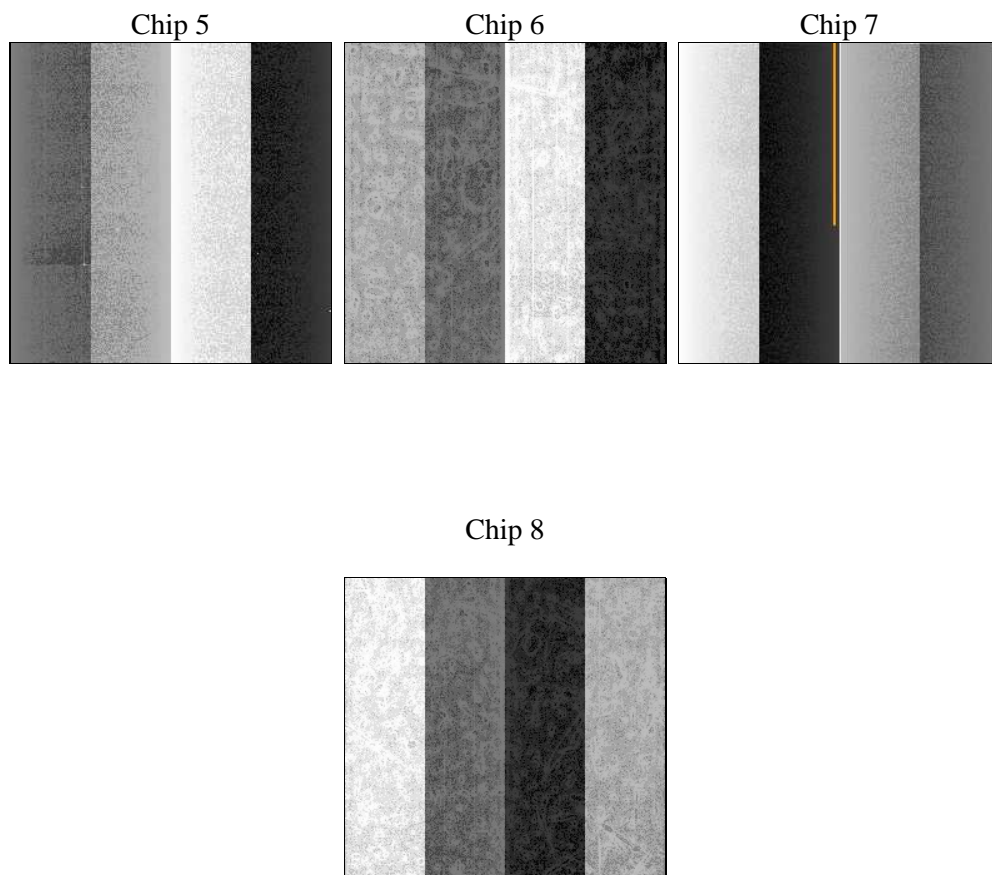
2 OBI

2.1 OBI

2.1.1 Images



2.1.2 Bias



2.1.3 Parameters

obi_num	0	Obi number	sched_exp_time	17000.000000	[s] Scheduled observation exposure time
ascdsver	10.4	Processing system revision	ontime	17056.200131297	Sum of GTIs [s]
caldsver	4.6.7	 	ontime5	17056.200131297	Sum of GTIs [s]
date	2015-06-22T00:50:31	Date and time of file creation	ontime6	17056.200131297	Sum of GTIs [s]
revision	1	Processing version of data	ontime7	17056.200131297	Sum of GTIs [s]
			ontime8	17056.200131297	Sum of GTIs [s]
			l1events	526591	Number of level 1 events

2.1.4 Events

	ccd 5	ccd 6	ccd 7	ccd 8
level 1 events	154885	97788	121854	152064
rejected events	81353	85707	67218	94589
rejected %	52%	87%	55%	62%

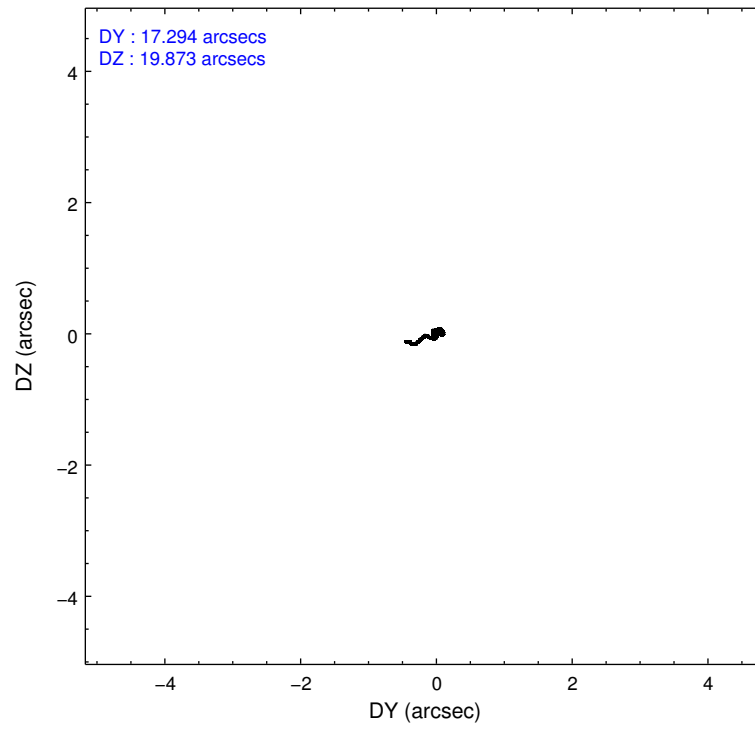
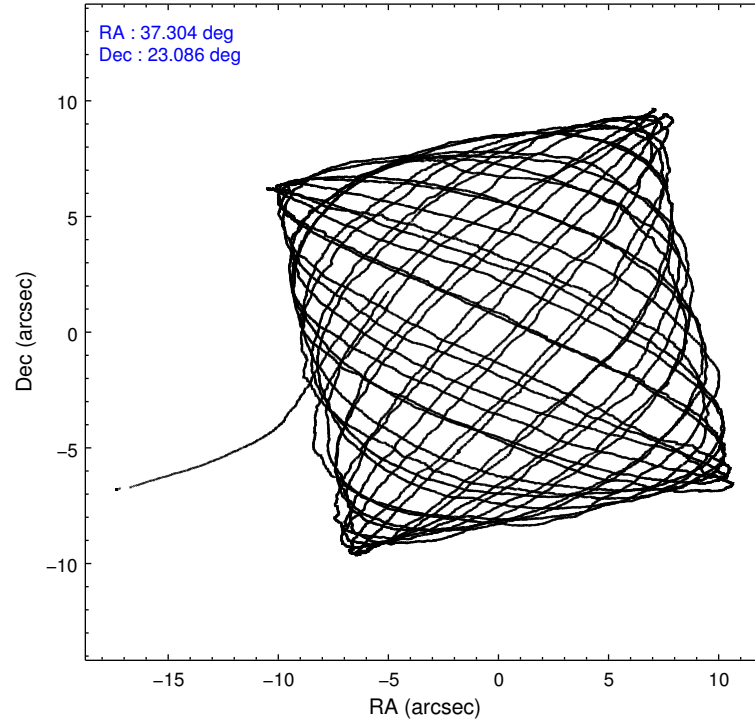
	ccd 5	ccd 6	ccd 7	ccd 8
grade 0 events	8011	4401	5203	17622
	5%	4%	4%	11%
grade 1 events	318	54	170	134
	0%	0%	0%	0%
grade 2 events	22597	2739	11660	10754
	14%	2%	9%	7%
grade 3 events	2582	1151	4546	8108
	1%	1%	3%	5%
grade 4 events	2444	1143	4596	7618
	1%	1%	3%	5%
grade 5 events	11558	4556	12205	7118
	7%	4%	10%	4%
grade 6 events	37921	2649	28648	13383
	24%	2%	23%	8%
grade 7 events	69454	81095	54826	87327
	44%	82%	44%	57%

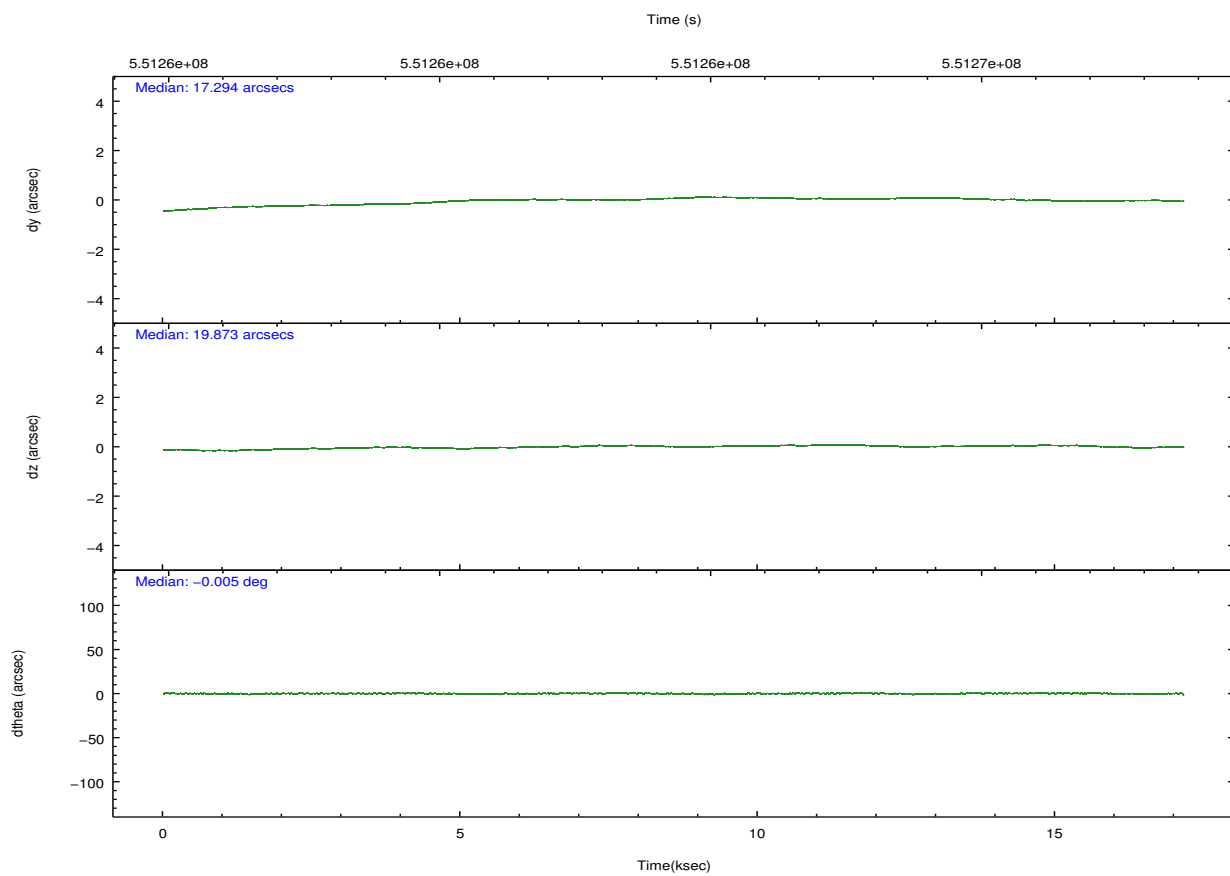
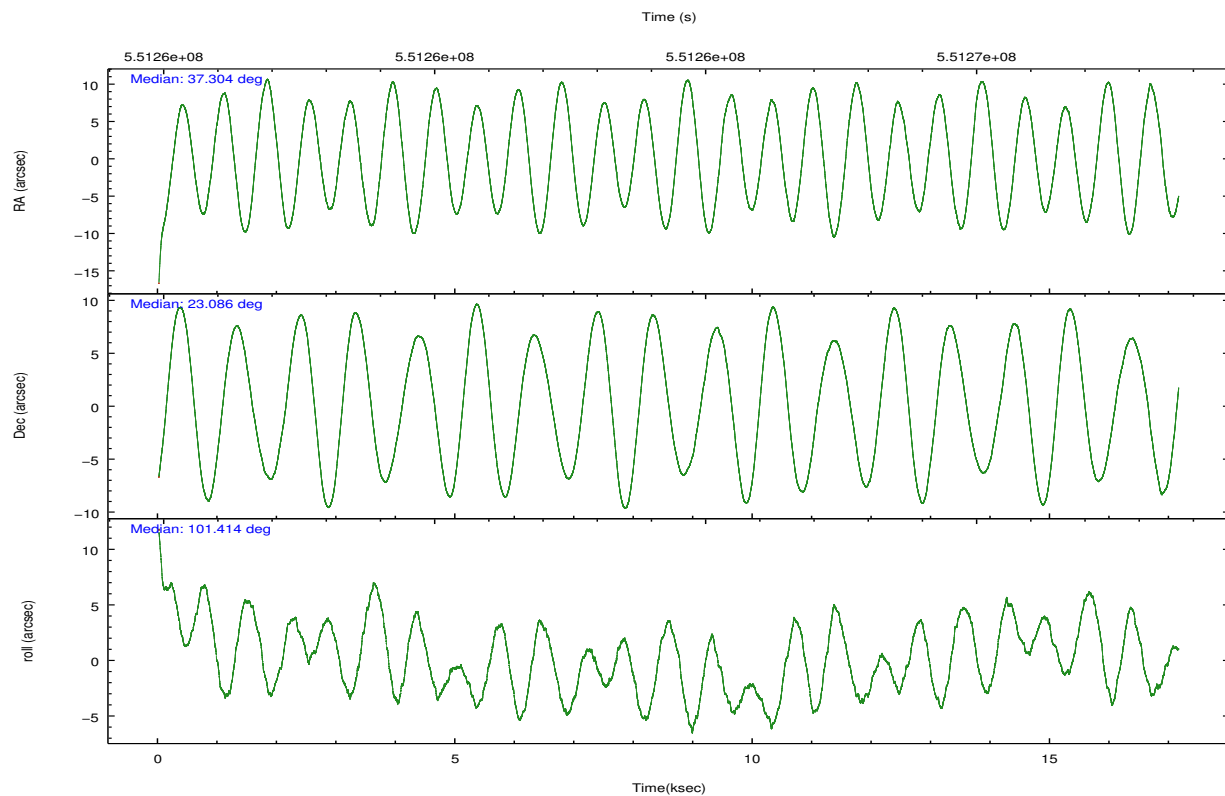
2.2 Compared Parameters

Parameter	Planned	Actual
Instrument	ACIS	ACIS
Detector	ACIS-5678	ACIS-5678
Grating	NONE	NONE
Data mode	FAINT	FAINT
Observation mode	POINTING	POINTING
[deg] Pointing RA	37.323810	37.30375571850654
[deg] Pointing Dec	23.065787	23.08611995849346
[deg] Pointing Roll	101.258249	101.4227360333877
[mm] SIM focus pos	-0.684267	-0.6828225247311905
[mm] SIM defocus	0	0.001444936568705701
[mm] SIM translation stage pos	-190.132523	-190.1425803651734
[mm] SIM translation stage offset	0	0.01005778216563158
[s] Observation start time (MET)	551255916.184000	551254659.00536
Observation start date	2015-06-21T06:37:29	2015-06-21T06:17:39
[s] Observation end time (MET)	551272916.184000	551274000.7564501
Observation end date	2015-06-21T11:20:49	2015-06-21T11:40:00
Read mode	TIMED	TIMED

Parameter	Planned	Actual
Obspar format version number	7	7
Obspar file type	PREDICTED	ACTUAL
Obspar update status	NONE	UPDATED
Number of optional ACIS chips dropped	0	0
On-chip summing requested	N	N
Subarray requested	NONE	NONE
Alternating exposures requested	N	N
[s] Primary exposure time	0.000000	3.1

2.3 Aspect



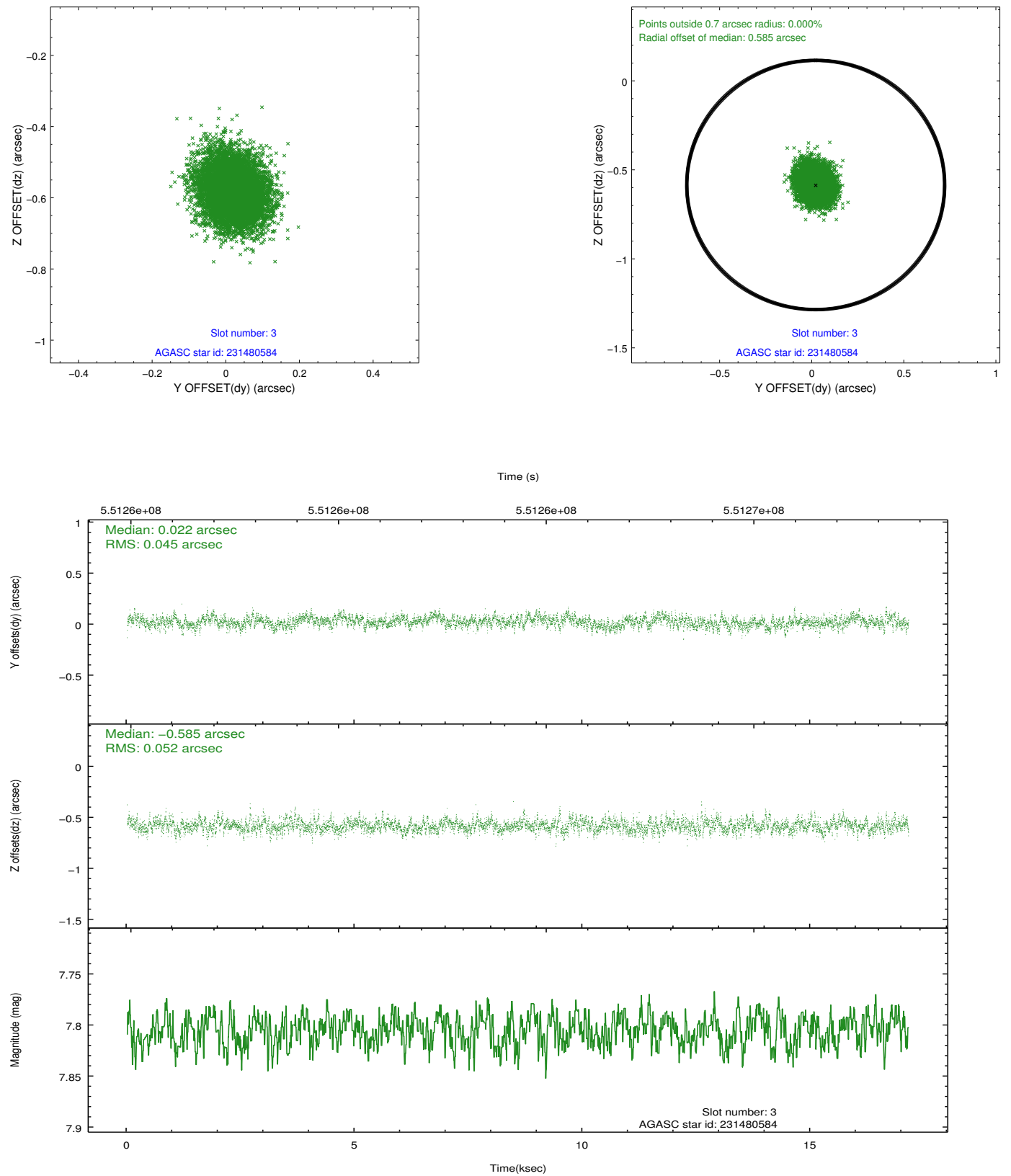


Slot Statistics

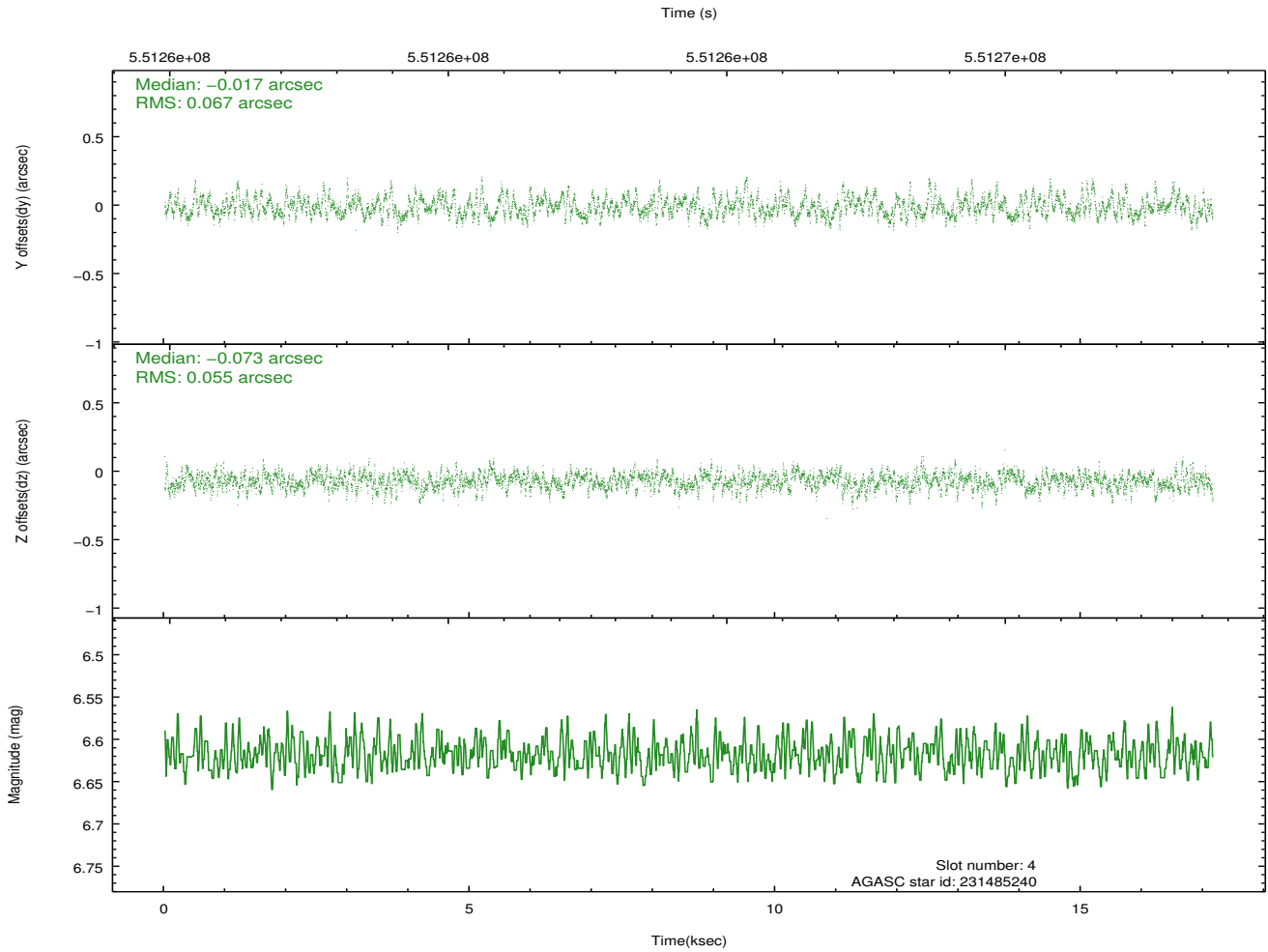
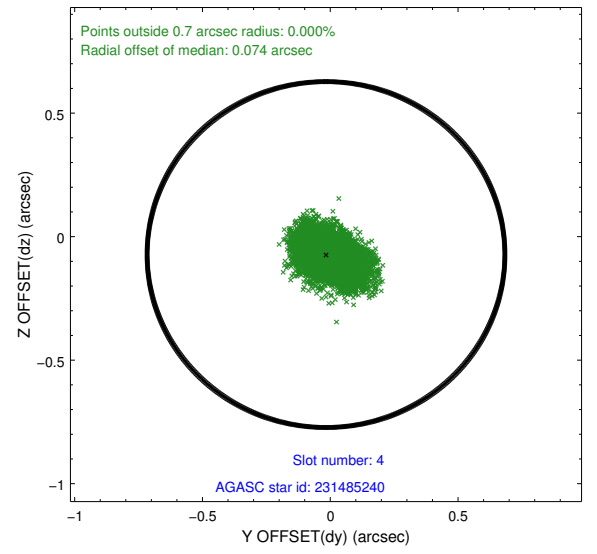
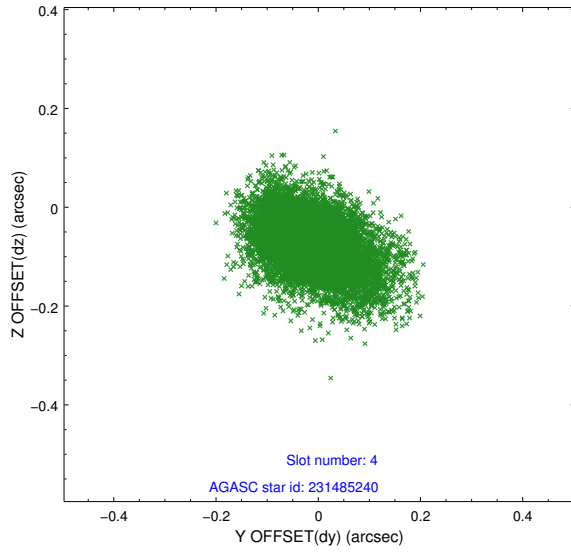
slot	status	used	id	mag	n_pts	med_dy	med_dz	dr1	dr2	ra	dec	mean_y	mean_z
0	FID		ACIS-S-2	6.94	4183	-0.107	-0.034	0.007	0.011	0.000000	0.000000	-770.36	-1741.36
1	FID		ACIS-S-4	7.03	4182	0.274	0.061	0.006	0.013	0.000000	0.000000	2143.16	167.00
2	FID		ACIS-S-5	7.05	4183	-0.198	-0.018	0.007	0.011	0.000000	0.000000	-1823.00	160.82
3	GUIDE	used	231480584	7.81	8366	0.022	-0.585	0.073	0.121	36.744564	22.878738	-281.73	2014.73
4	GUIDE	used	231485240	6.62	8366	-0.017	-0.073	0.090	0.155	37.307007	23.469023	1434.21	-229.68
5	GUIDE	used	231605568	8.89	8362	-0.027	0.315	0.099	0.164	37.905250	23.471495	1062.11	-2168.35
6	GUIDE	used	231605576	8.75	8361	-0.308	0.019	0.108	0.180	37.781131	23.722607	2027.52	-1940.20
7	GUIDE	used	231608512	8.86	8363	0.326	0.321	0.094	0.154	38.023387	22.827163	-1289.18	-2109.87

2.4 Star Slots

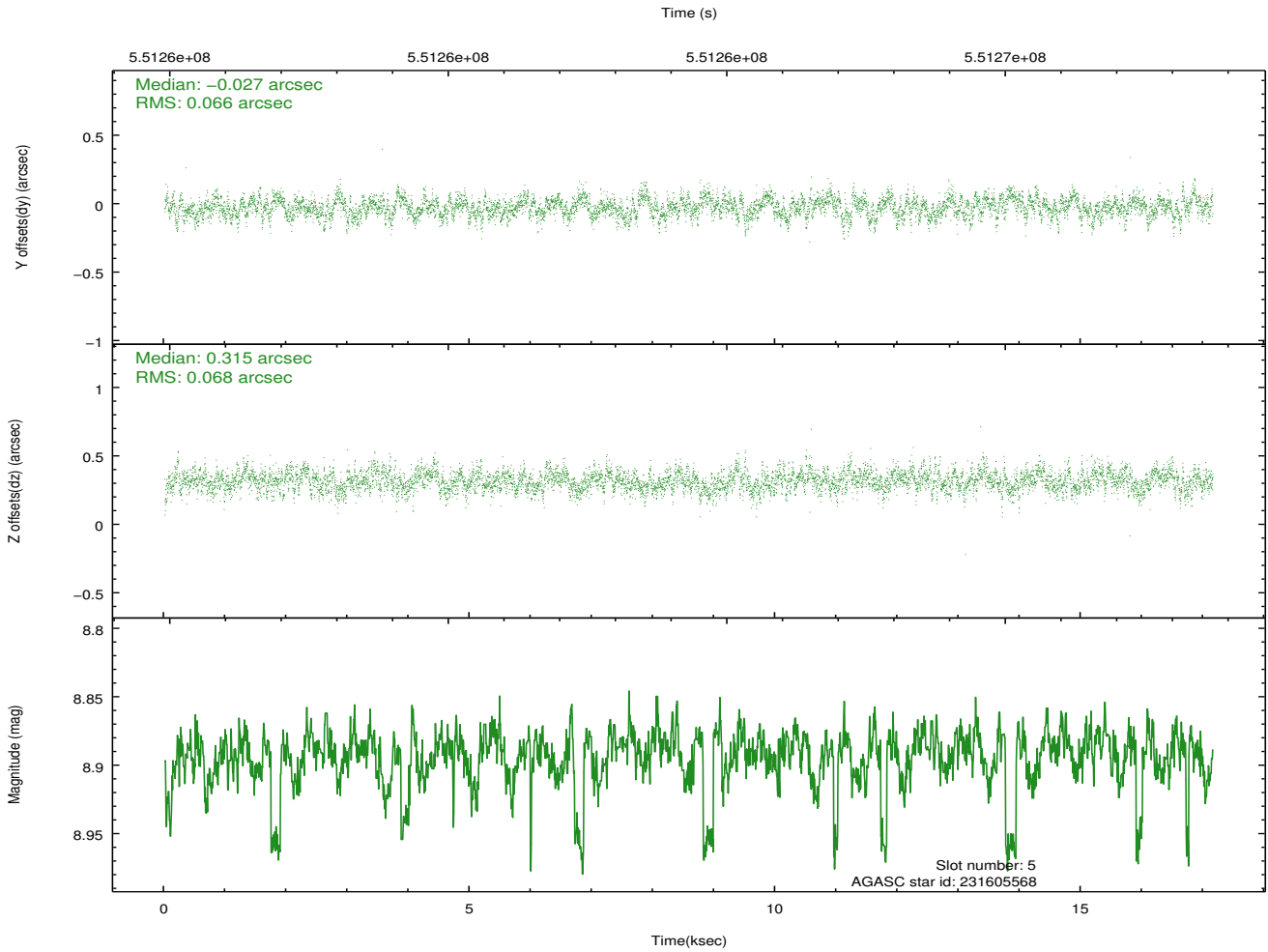
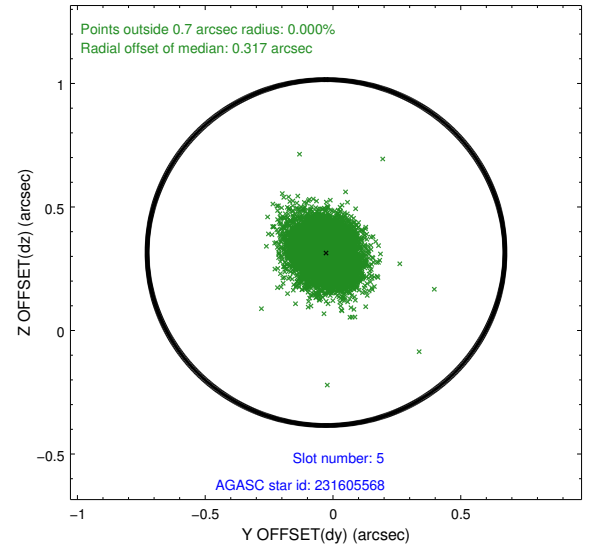
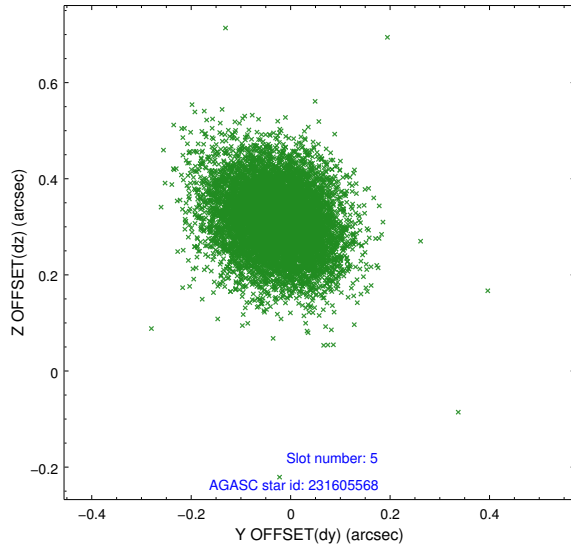
2.4.1 Slot 3



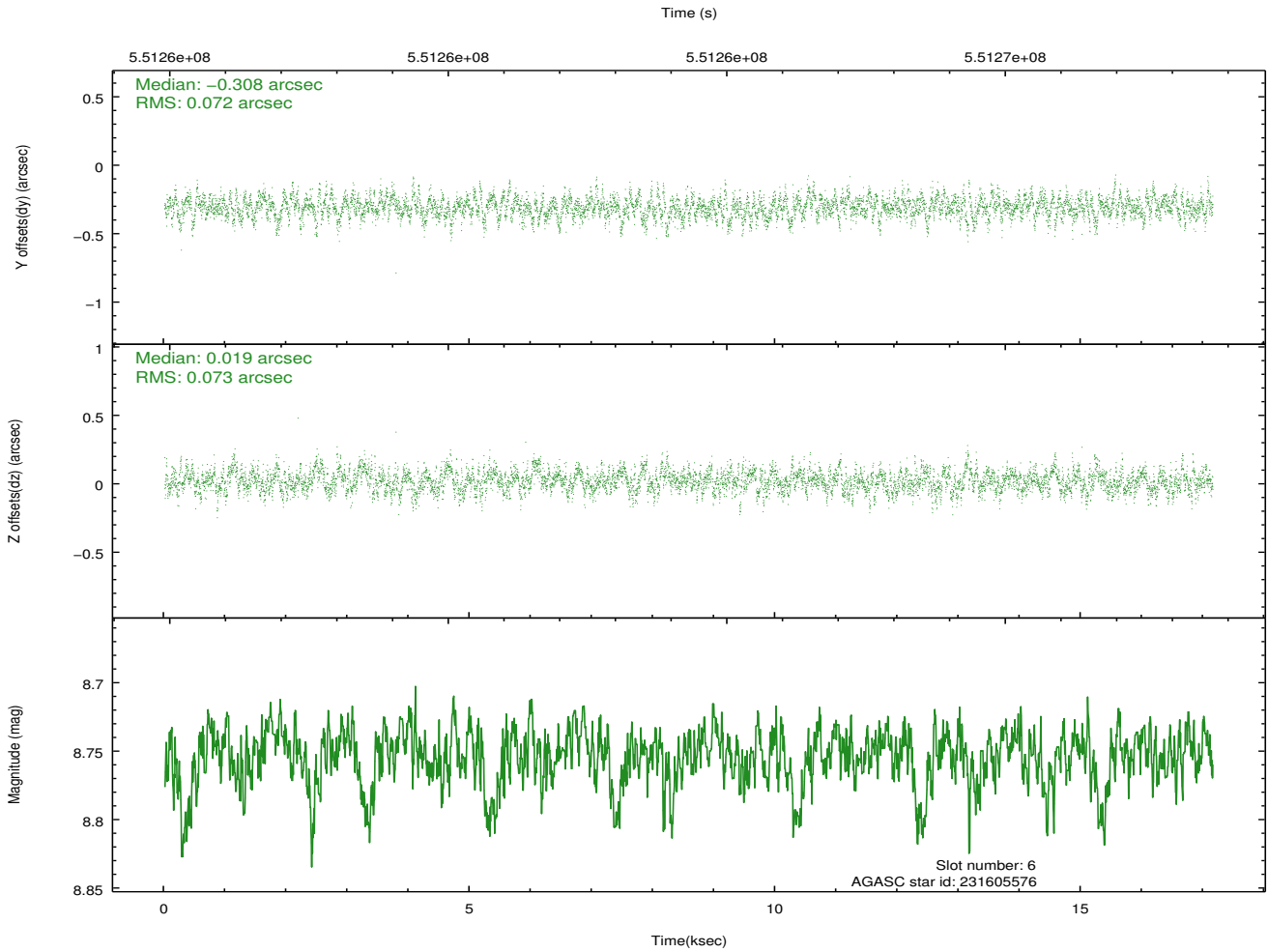
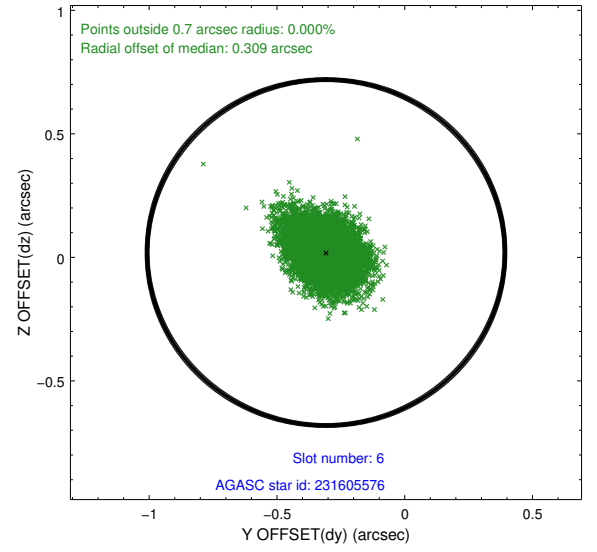
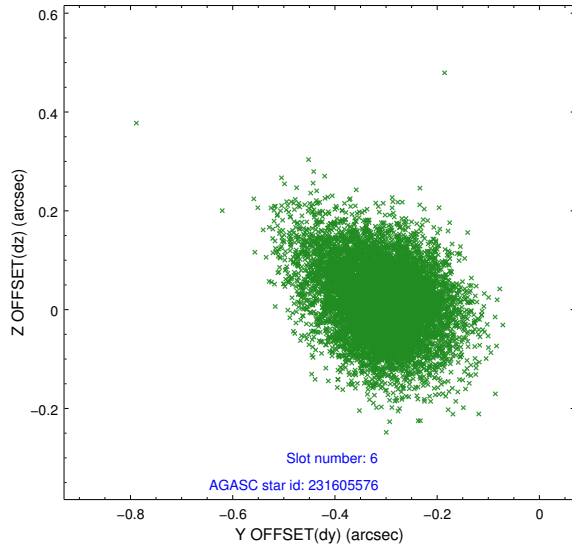
2.4.2 Slot 4



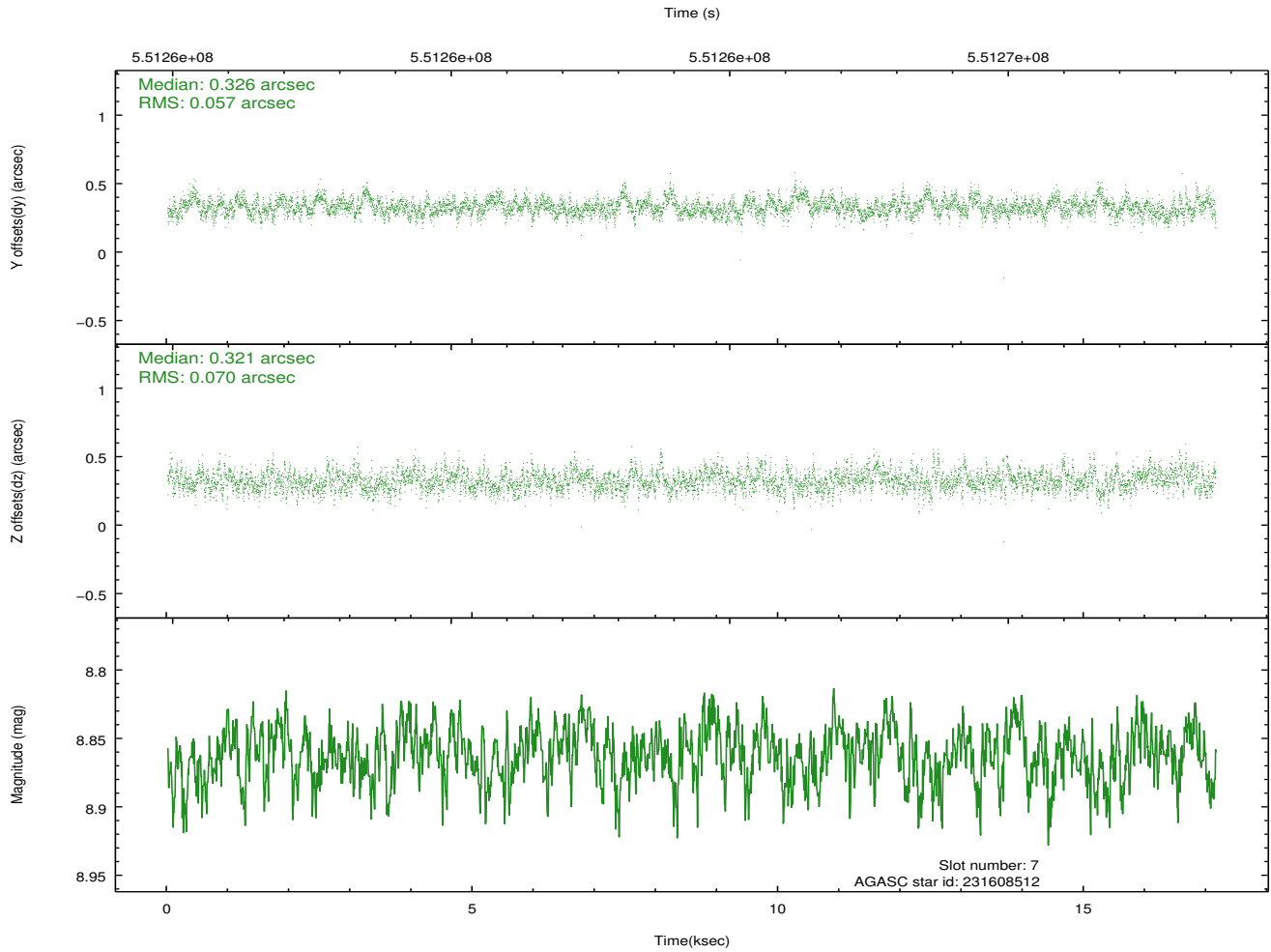
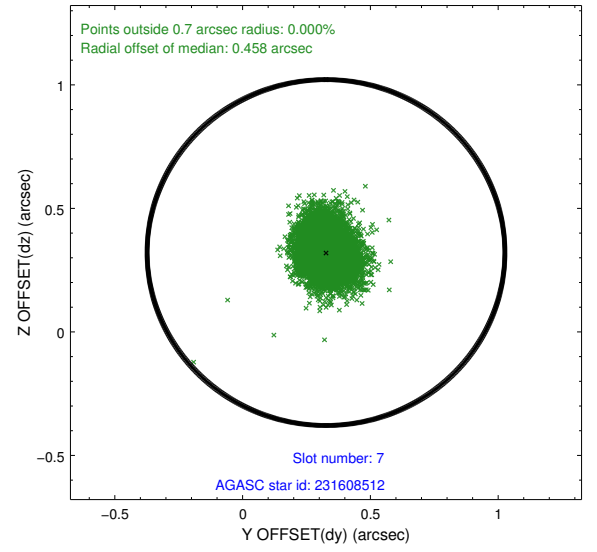
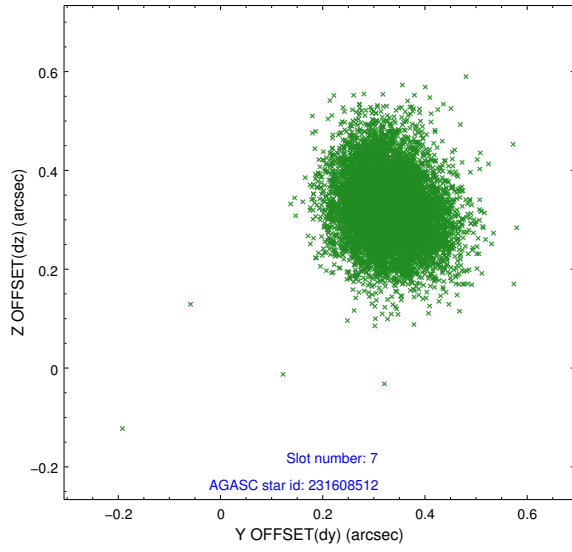
2.4.3 Slot 5



2.4.4 Slot 6

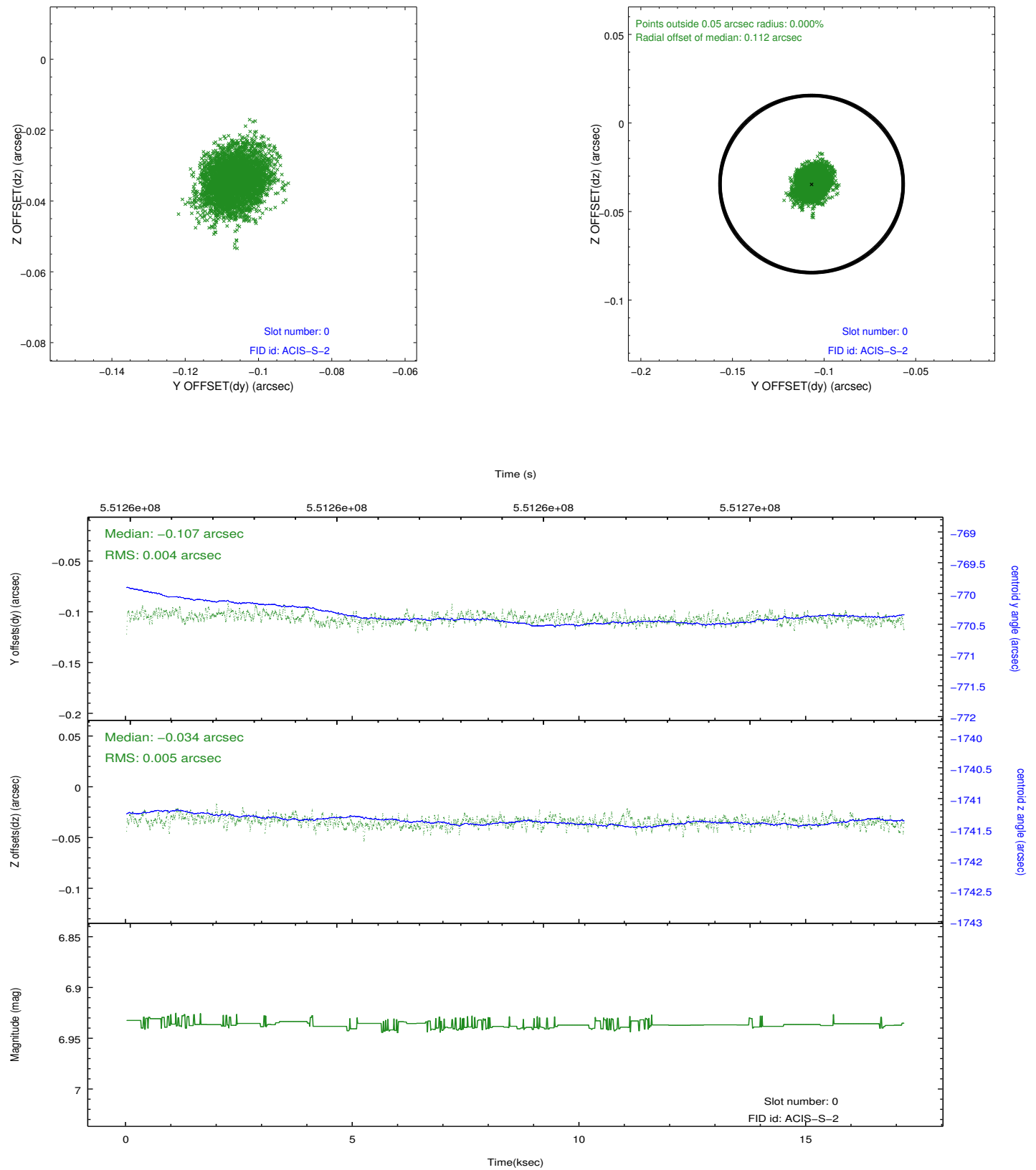


2.4.5 Slot 7

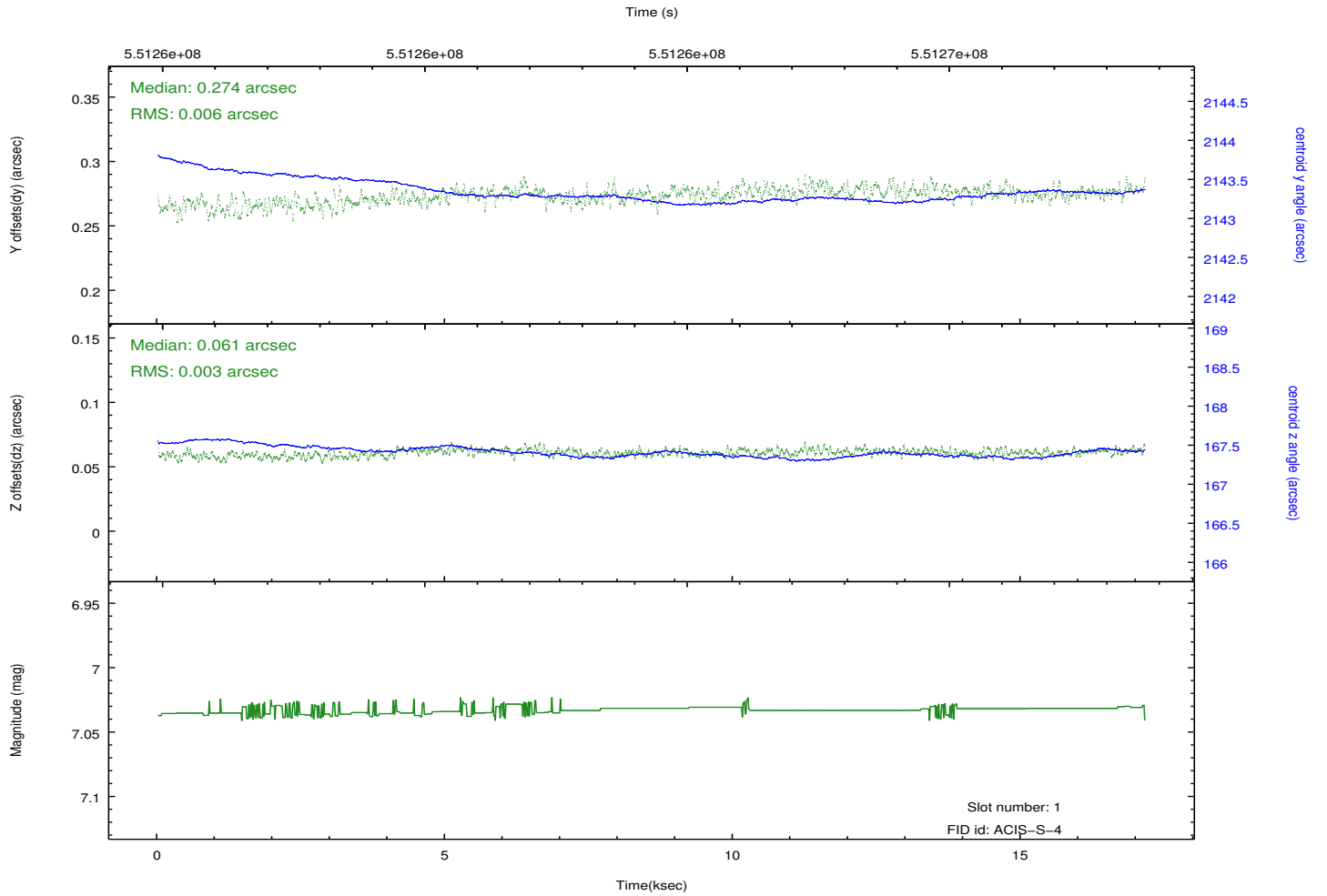
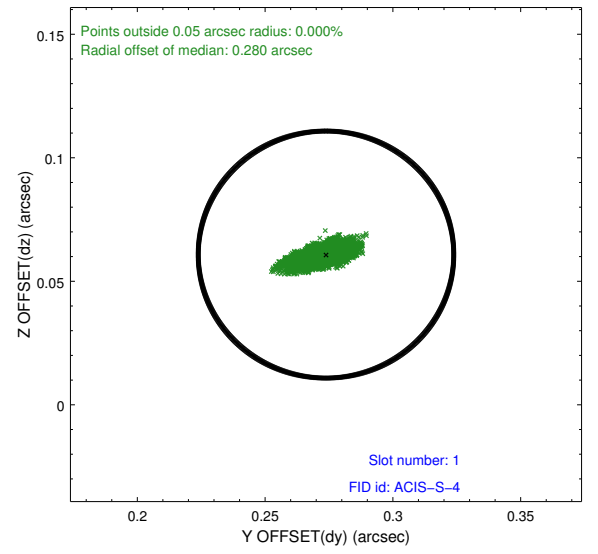
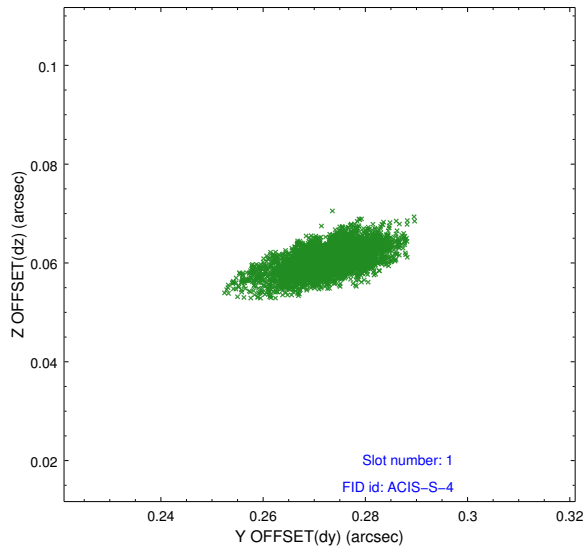


2.5 FID Slots

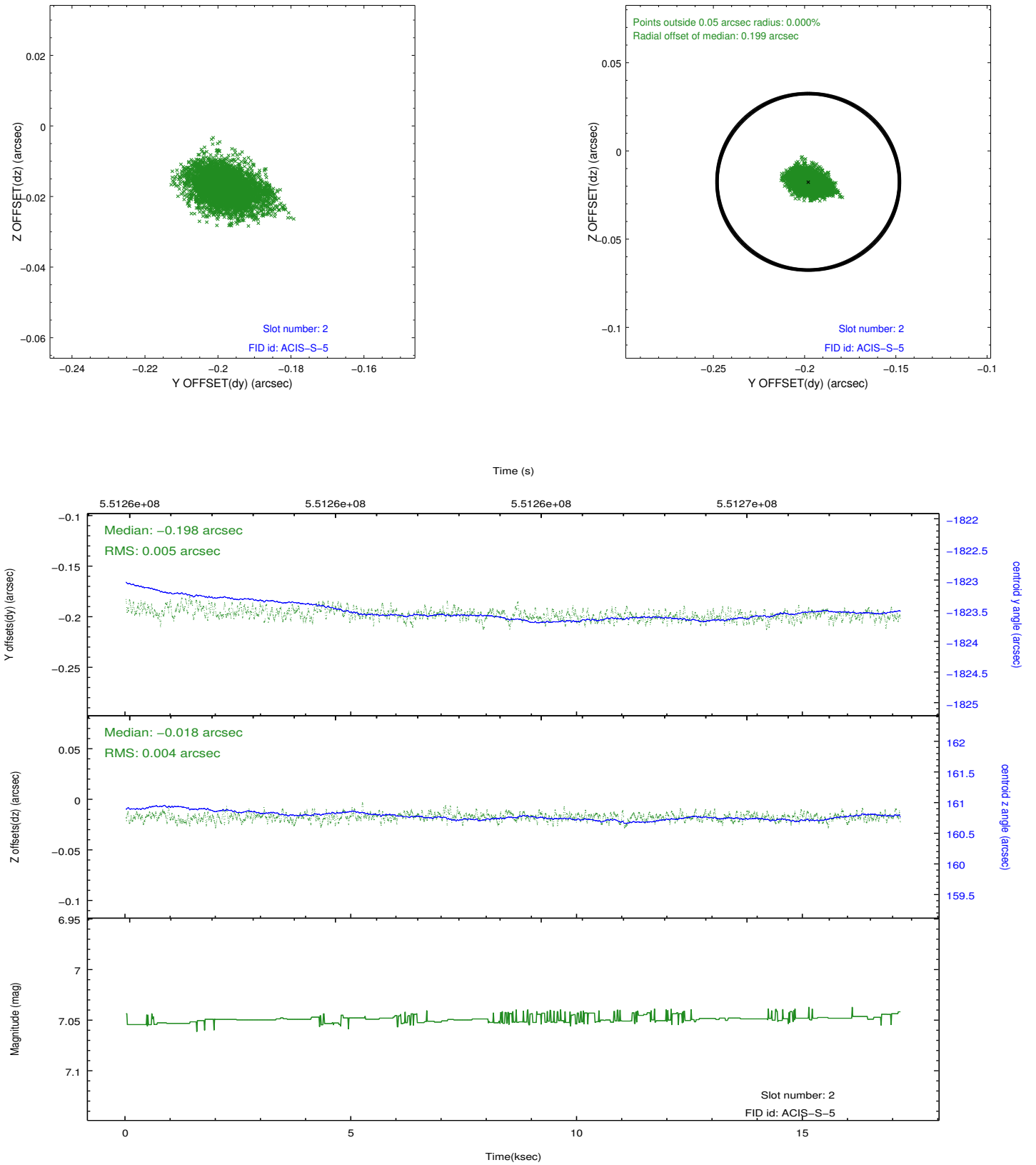
2.5.1 Slot 0



2.5.2 Slot 1



2.5.3 Slot 2



A Summary

A.1 Status

V&V Scientist	Joy Nichols
V&V Date (YYYY-MM-DD)	2015.06.22
V&V Edition	1
V&V Disposition and Status	OK
V&V Charge Time	17.056200131297

A.2 Comments