

V&V Reference Report

L2 ASCDS Version : 10.4

Observation 17458 - L2 Version 1
Chandra X-Ray Center

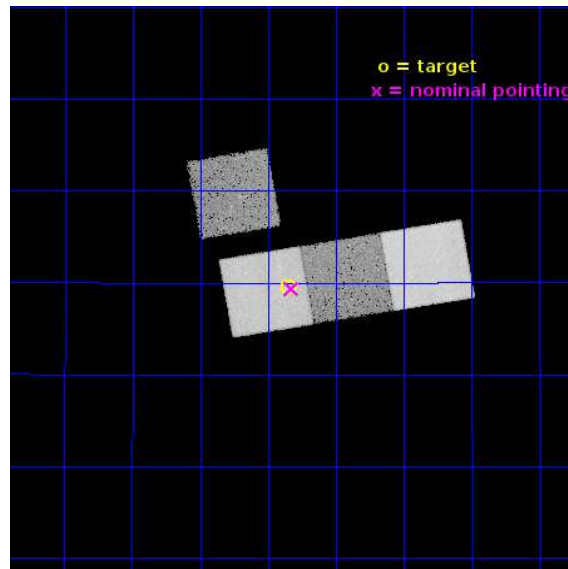
L2 Processing Date : Jun 22 2015

Contents

1	Front	2
2	OBI	3
2.1	OBI	3
2.1.1	Images	3
2.1.2	Bias	3
2.1.3	Parameters	4
2.1.4	Events	4
2.2	Compared Parameters	5
2.3	Aspect	6
2.4	Star Slots	9
2.4.1	Slot 3	9
2.4.2	Slot 4	10
2.4.3	Slot 5	11
2.4.4	Slot 6	12
2.4.5	Slot 7	13
2.5	FID Slots	14
2.5.1	Slot 0	14
2.5.2	Slot 1	15
2.5.3	Slot 2	16
A	Summary	17
A.1	Status	17
A.2	Comments	17

1 Front

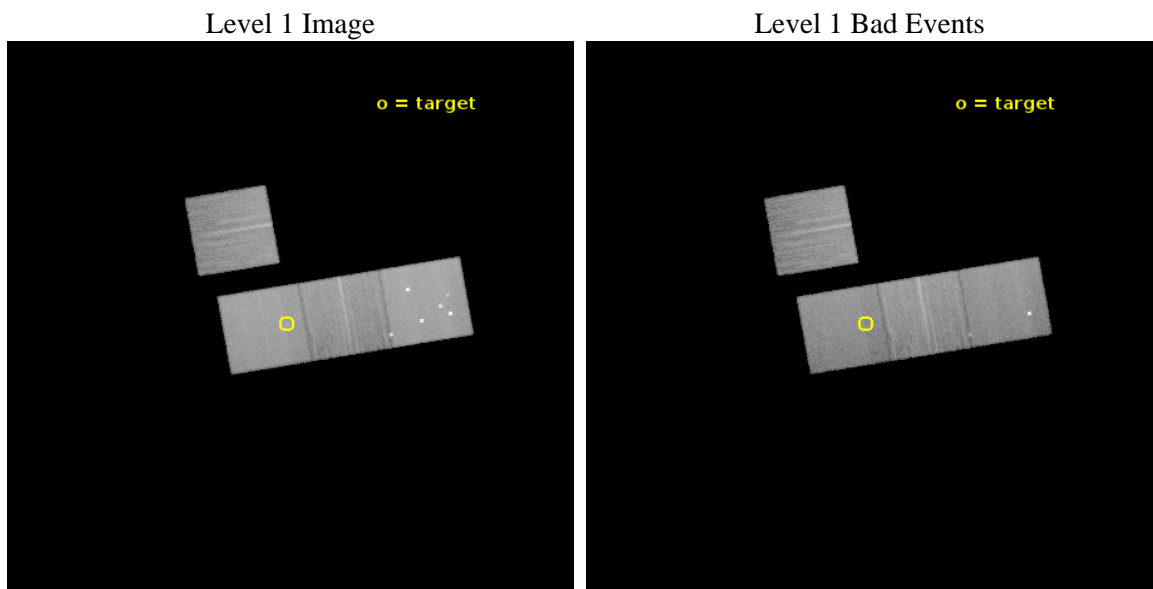
seq_num	601214	Sequence number
obs_id	17458	Observation id
title	Exploring a low stellar mass galaxy with unusually large velocity dispersion	Proposal title
observer	Dr. Stephen Murray	Principal investigator
object	NGC6587	Source name
dtcycle	0	
cycle	P	events from which exps? Prim/Second/Both
ra_targ	273.462083	Observer's specified target RA [deg]
dec_targ	18.825333	Observer's specified target Dec [deg]
ra_nom	273.45706544391	Nominal RA [deg]
dec_nom	18.822677229008	Nominal Dec [deg]
roll_nom	170.15823450994	Nominal Roll [deg]
revision	1	Processing version of data
ontime	30286.573696971	Sum of GTIs [s]
livetime	29890.857314969	Livetime [s]
ontime3	30283.309596777	Sum of GTIs [s]
ontime5	30286.532657027	Sum of GTIs [s]
ontime6	30283.350646734	Sum of GTIs [s]
ontime7	30286.573696971	Sum of GTIs [s]
l2events	254095	Number of level 2 events



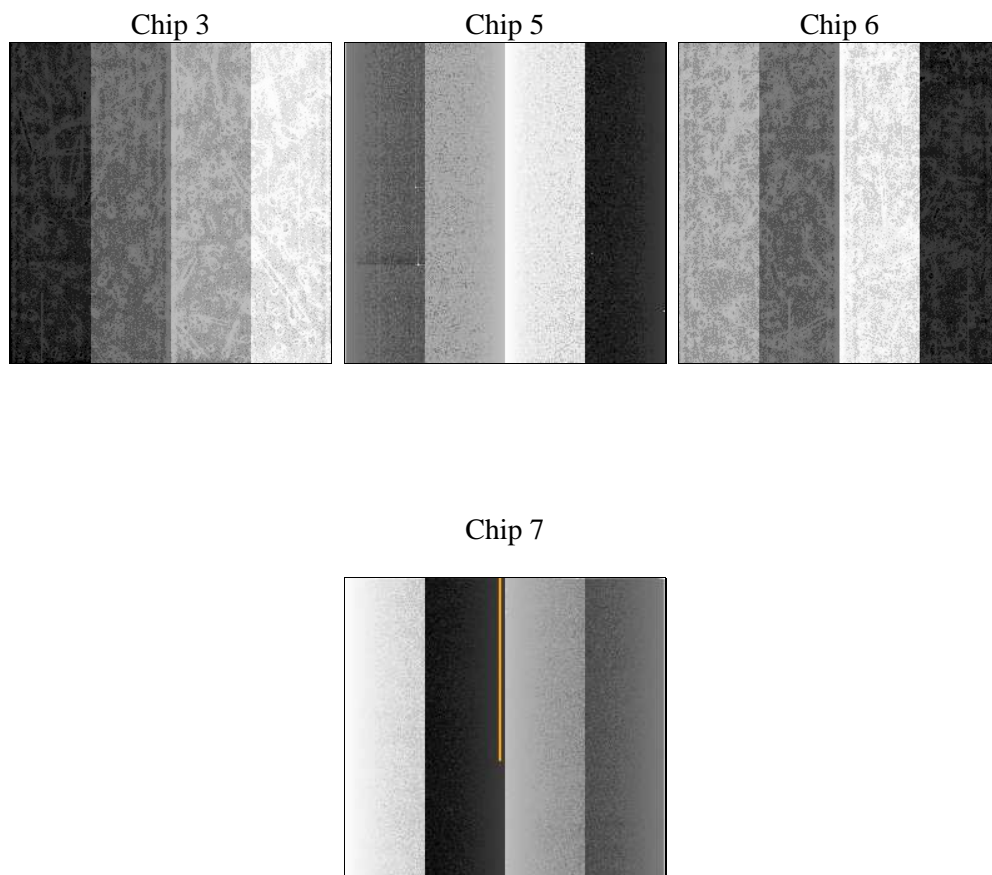
2 OBI

2.1 OBI

2.1.1 Images



2.1.2 Bias



2.1.3 Parameters

obi_num	0	Obi number	sched_exp_time	30222.431000	[s] Scheduled observation exposure time
ascdsver	10.4	Processing system revision	ontime	30286.573696971	Sum of GTIs [s]
caldsver	4.6.7	 	ontime3	30283.309596777	Sum of GTIs [s]
date	2015-06-22T04:30:59	Date and time of file creation	ontime5	30286.532657027	Sum of GTIs [s]
revision	1	Processing version of data	ontime6	30283.350646734	Sum of GTIs [s]
			ontime7	30286.573696971	Sum of GTIs [s]
			l1events	869430	Number of level 1 events

2.1.4 Events

	ccd 3	ccd 5	ccd 6	ccd 7
level 1 events	166723	302295	179038	221374
rejected events	148813	148494	157338	123100
rejected %	89%	49%	87%	55%

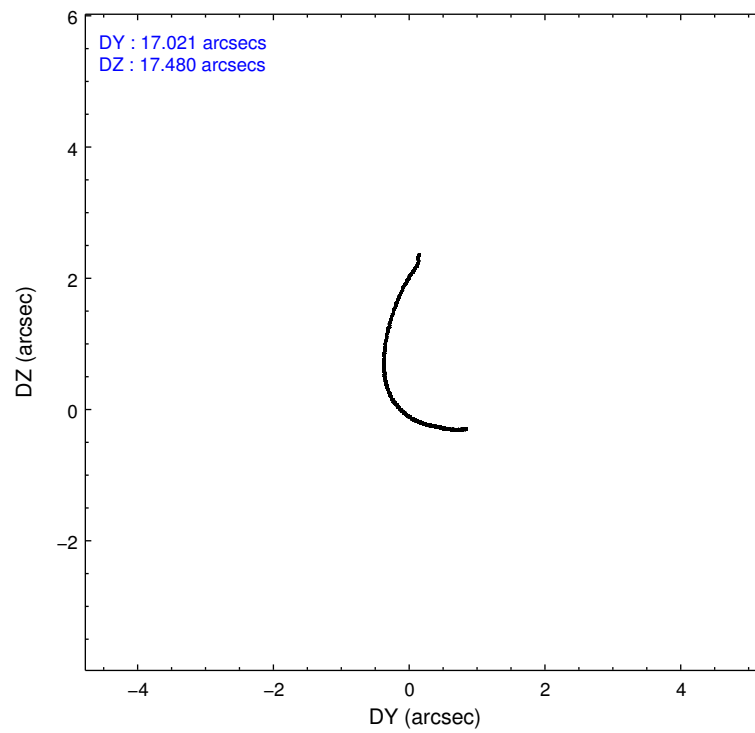
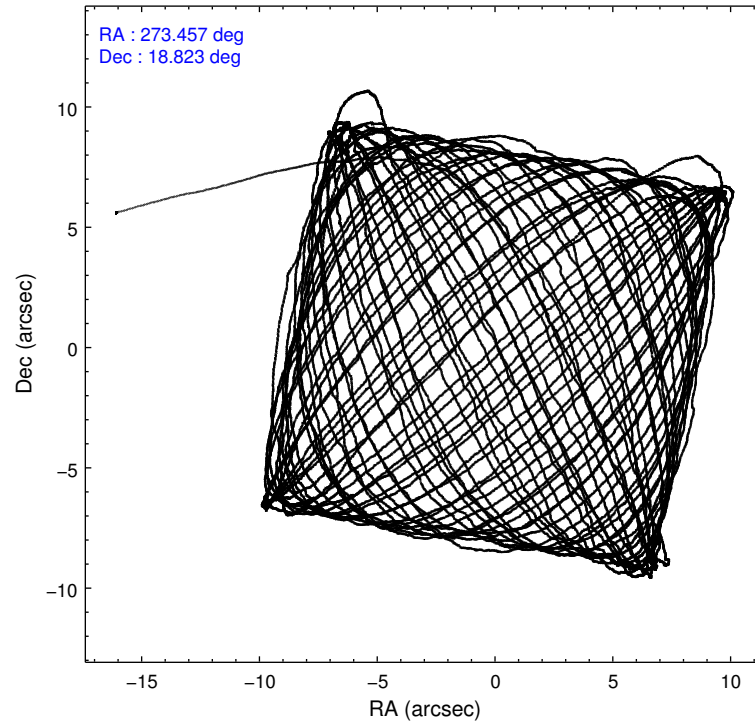
	ccd 3	ccd 5	ccd 6	ccd 7
grade 0 events	6516	30417	8063	8993
	3%	10%	4%	4%
grade 1 events	95	694	75	333
	0%	0%	0%	0%
grade 2 events	3988	43684	5303	21613
	2%	14%	2%	9%
grade 3 events	1855	5383	1873	8329
	1%	1%	1%	3%
grade 4 events	1935	5589	1922	8350
	1%	1%	1%	3%
grade 5 events	7817	20354	8242	22154
	4%	6%	4%	10%
grade 6 events	3619	68768	4542	51010
	2%	22%	2%	23%
grade 7 events	140898	127406	149018	100592
	84%	42%	83%	45%

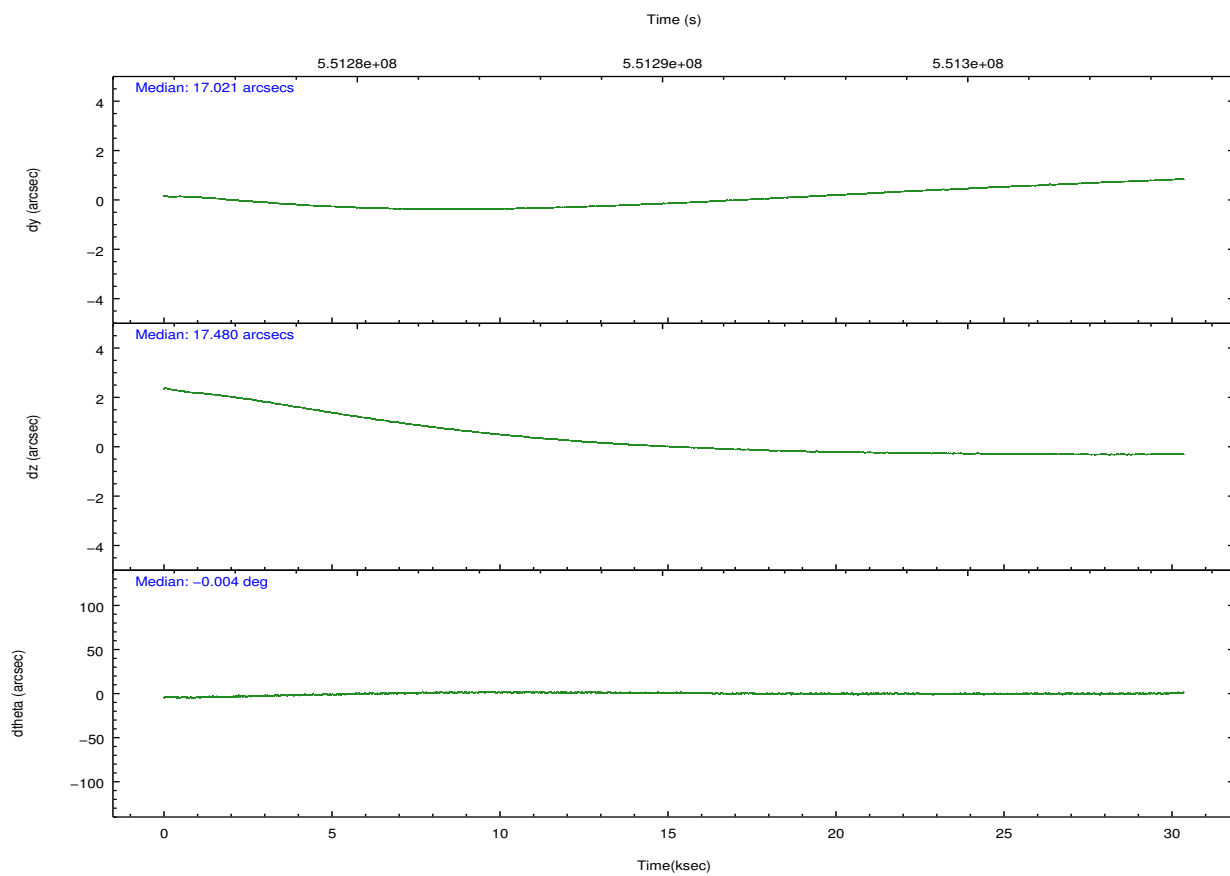
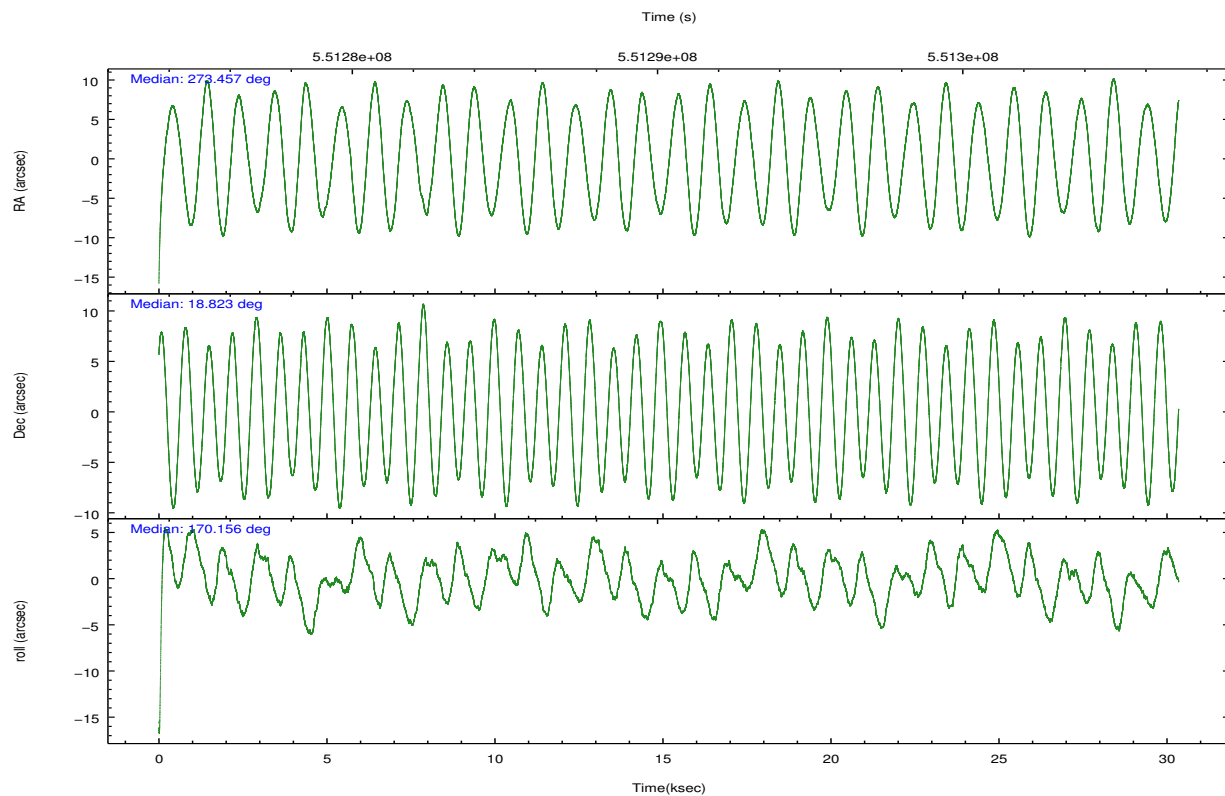
2.2 Compared Parameters

Parameter	Planned	Actual
Instrument	ACIS	ACIS
Detector	ACIS-3567	ACIS-3567
Grating	NONE	NONE
Data mode	VFAINT	VFAINT
Observation mode	POINTING	POINTING
[deg] Pointing RA	273.484155	273.4570654439099
[deg] Pointing Dec	18.832480	18.8226772290079
[deg] Pointing Roll	169.992876	170.1582345099398
[mm] SIM focus pos	-0.684267	-0.6828225247311905
[mm] SIM defocus	0	0.001444936568705701
[mm] SIM translation stage pos	-190.132523	-190.1425803651734
[mm] SIM translation stage offset	0	0.01005778216563158
[s] Observation start time (MET)	551275326.184000	551274000.7564501
Observation start date	2015-06-21T12:00:59	2015-06-21T11:40:00
[s] Observation end time (MET)	551305549.184000	551305777.29573
Observation end date	2015-06-21T20:24:42	2015-06-21T20:29:37
Read mode	TIMED	TIMED

Parameter	Planned	Actual
Obspar format version number	7	7
Obspar file type	PREDICTED	ACTUAL
Obspar update status	NONE	UPDATED
Number of optional ACIS chips dropped	0	0
On-chip summing requested	N	N
Subarray requested	NONE	NONE
Alternating exposures requested	N	N
[s] Primary exposure time	0.000000	3.1

2.3 Aspect



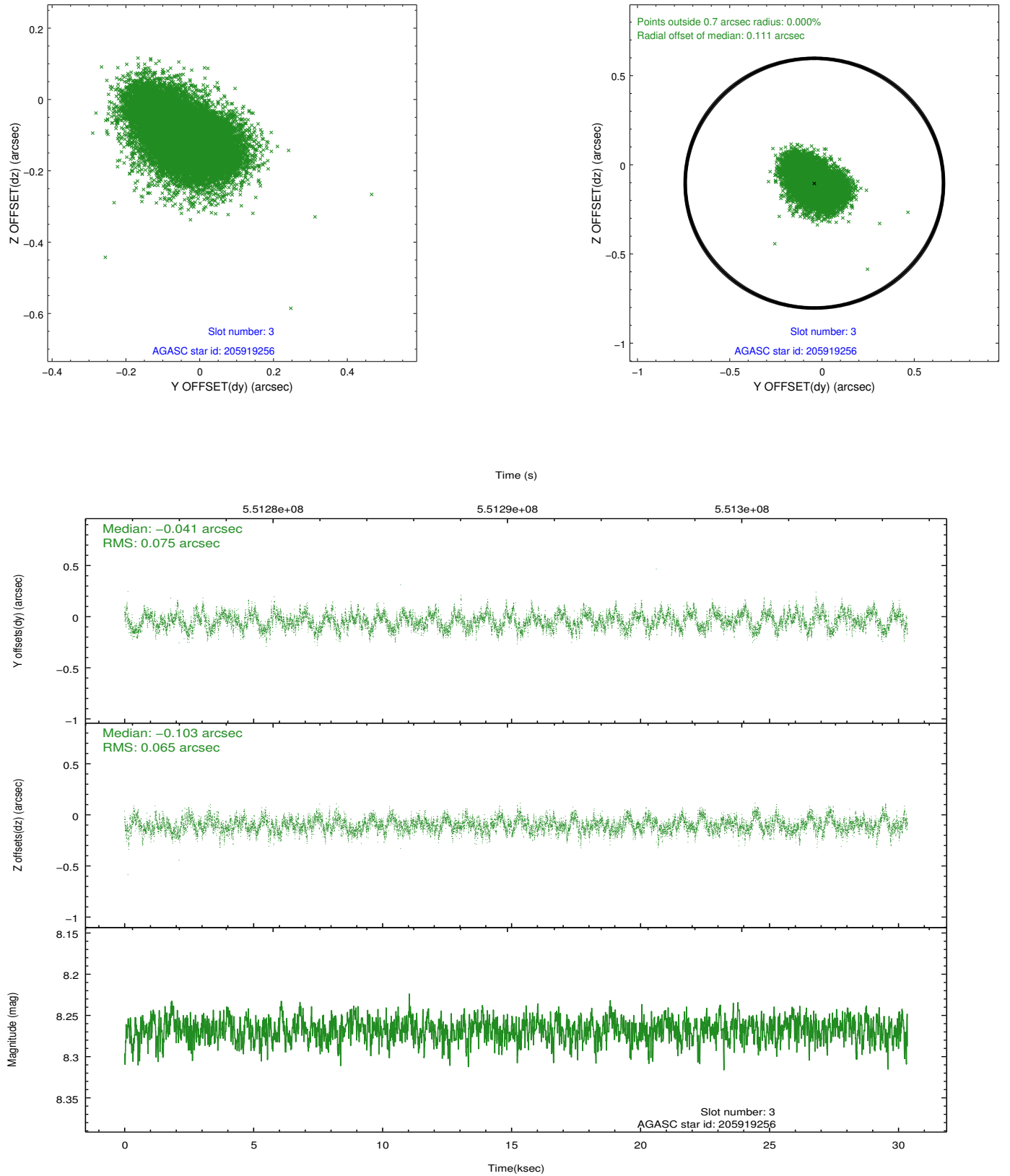


Slot Statistics

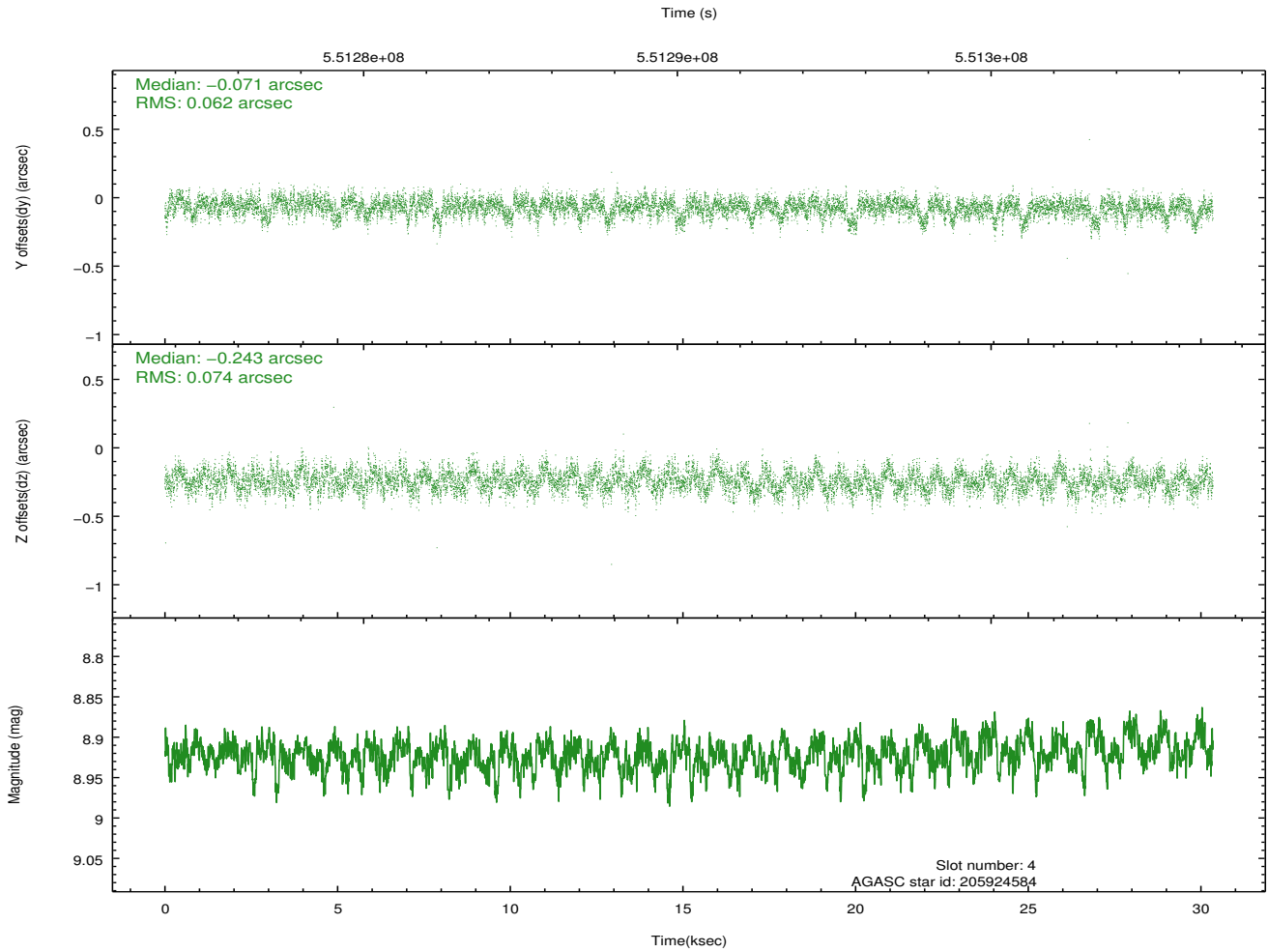
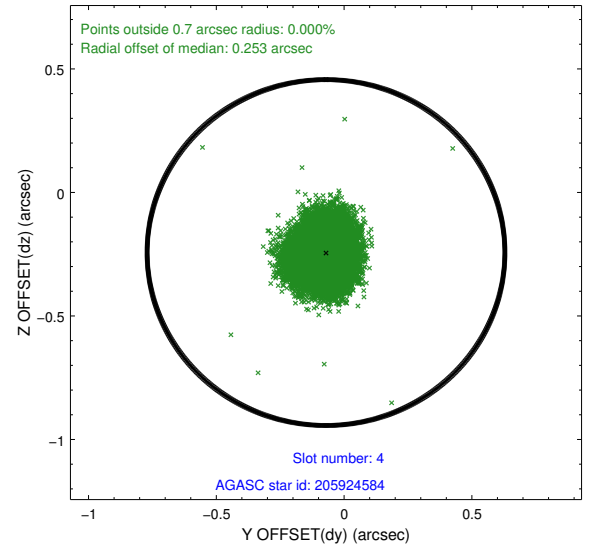
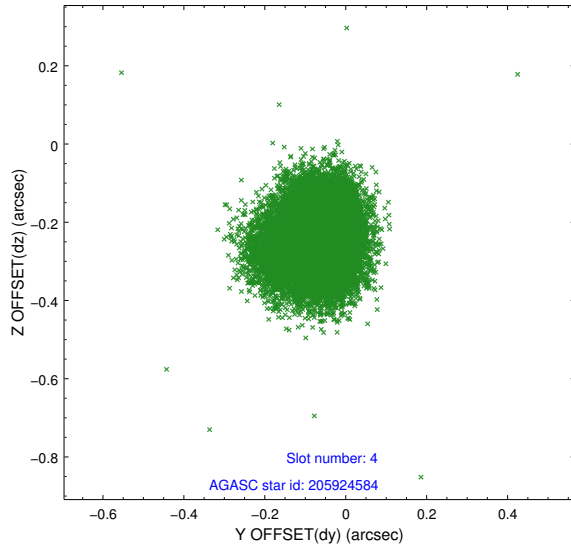
slot	status	used	id	mag	n_pts	med_dy	med_dz	dr1	dr2	ra	dec	mean_y	mean_z
0	FID		ACIS-S-2	6.97	7402	-0.091	-0.054	0.013	0.021	0.000000	0.000000	-770.23	-1739.32
1	FID		ACIS-S-4	7.06	7403	0.285	0.059	0.012	0.026	0.000000	0.000000	2143.41	169.19
2	FID		ACIS-S-5	7.08	7403	-0.223	0.004	0.015	0.027	0.000000	0.000000	-1823.10	162.91
3	GUIDE	used	205919256	8.27	14803	-0.041	-0.103	0.106	0.173	273.739647	18.474556	-1082.57	1117.14
4	GUIDE	used	205924584	8.92	14802	-0.071	-0.243	0.103	0.163	273.495858	18.252607	-401.92	2049.22
5	GUIDE	used	206440272	8.54	14799	0.099	0.149	0.090	0.146	273.045499	19.093692	1633.75	-667.99
6	GUIDE	used	206572992	8.66	14803	0.146	0.321	0.111	0.172	274.043937	18.919405	-1821.83	-641.96
7	GUIDE	used	206439680	9.14	14794	-0.127	-0.126	0.098	0.162	272.784491	18.796891	2326.78	536.08

2.4 Star Slots

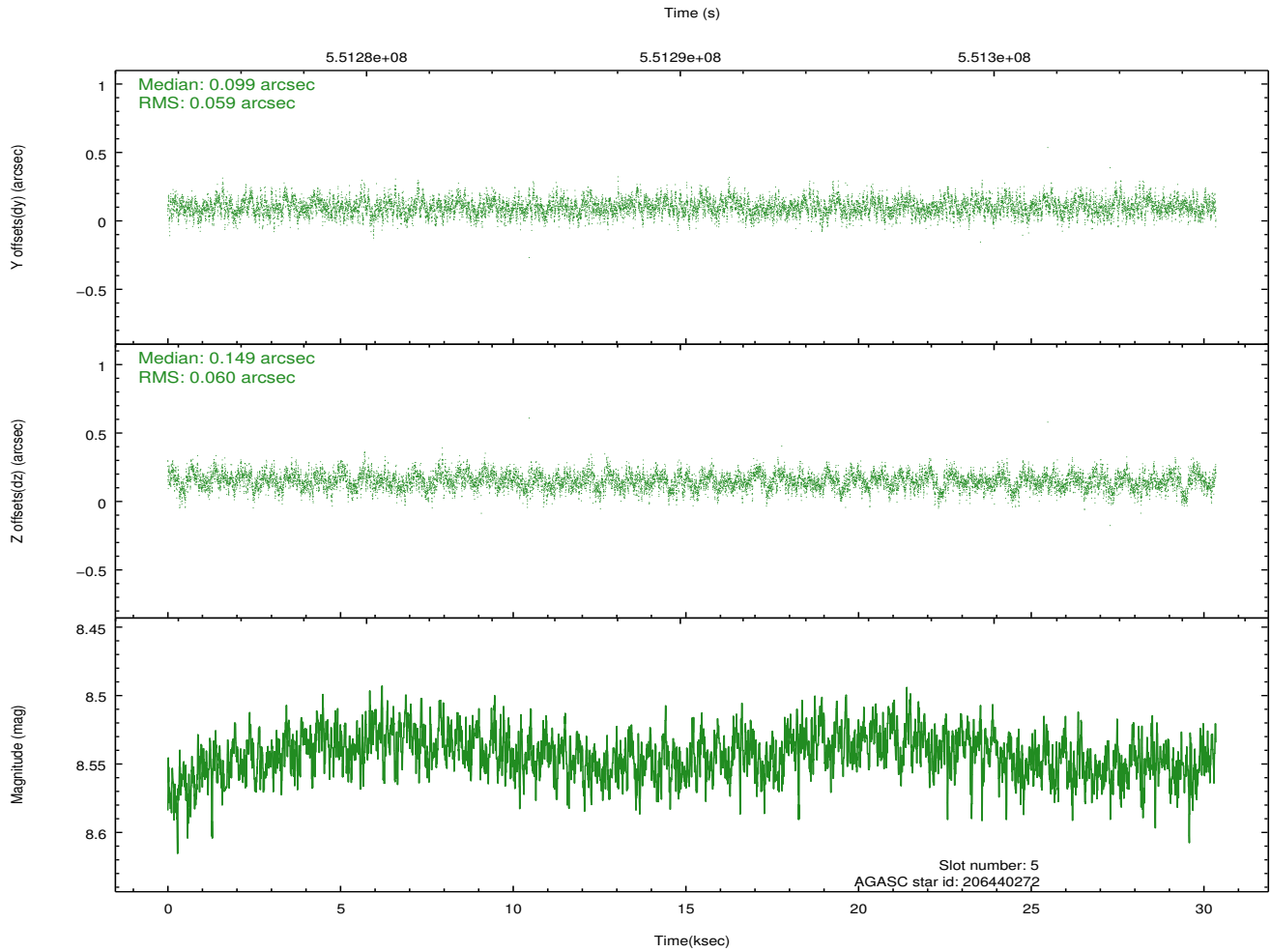
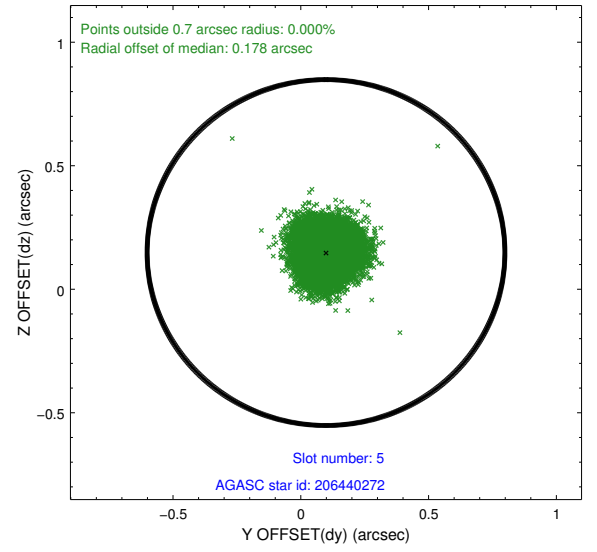
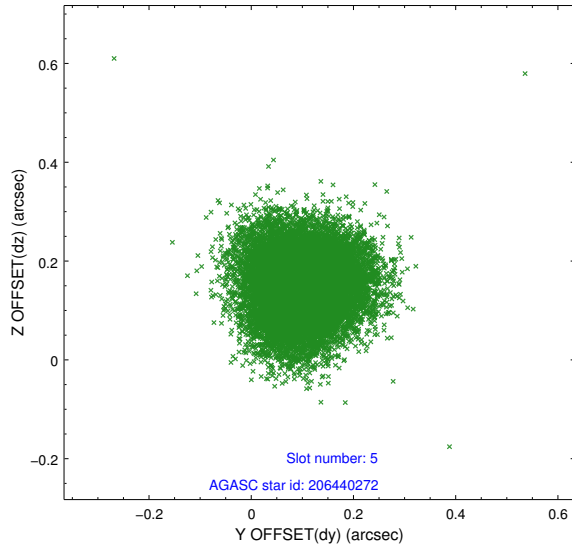
2.4.1 Slot 3



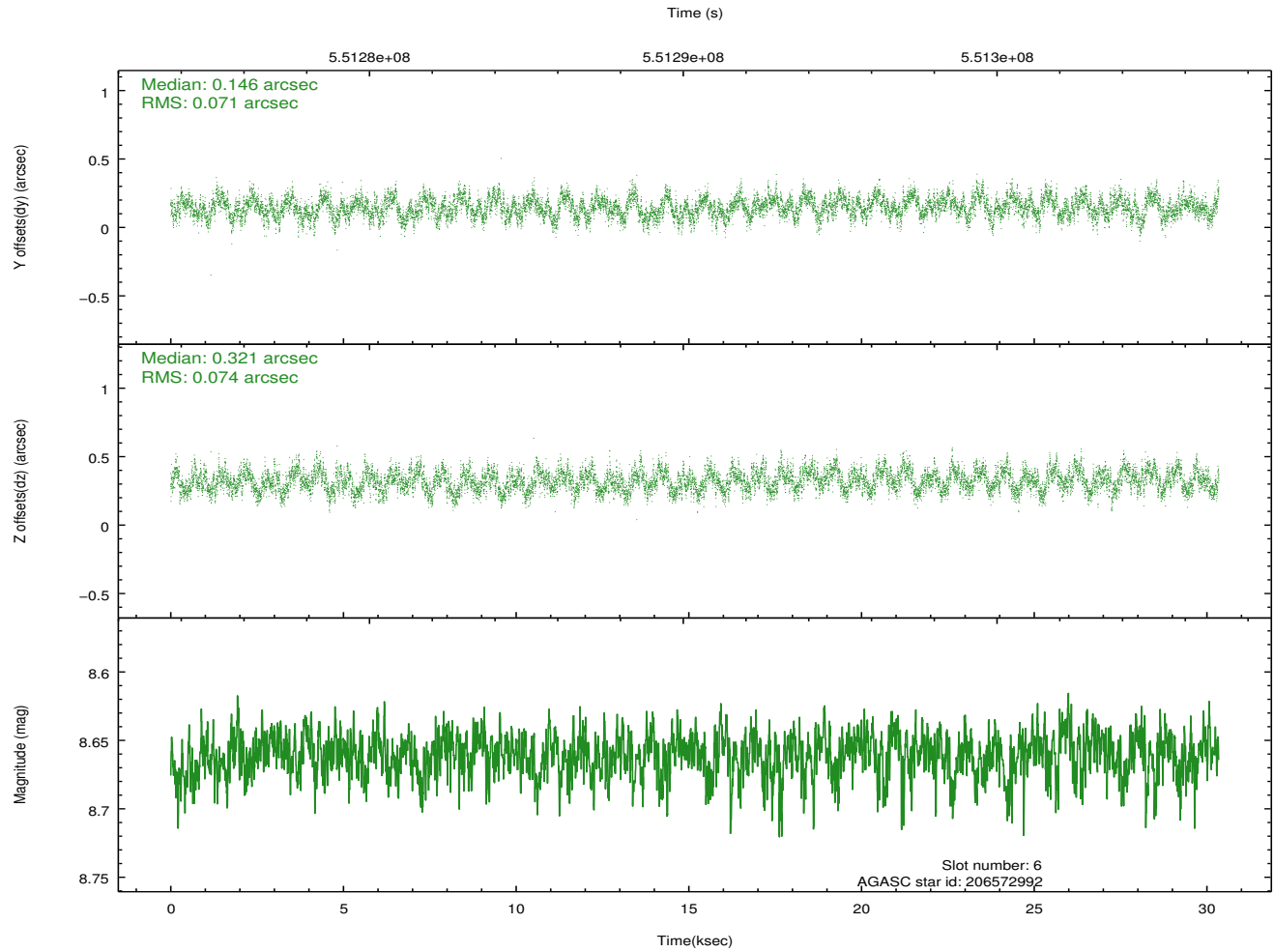
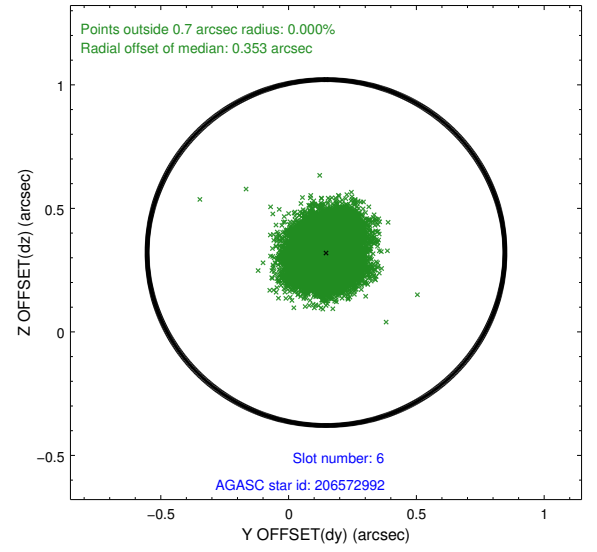
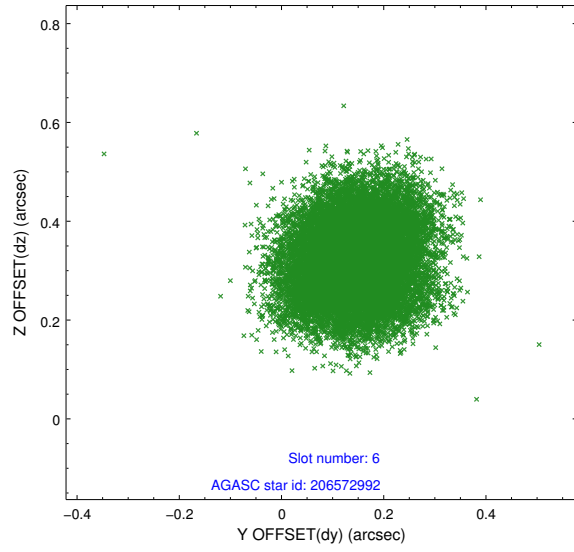
2.4.2 Slot 4



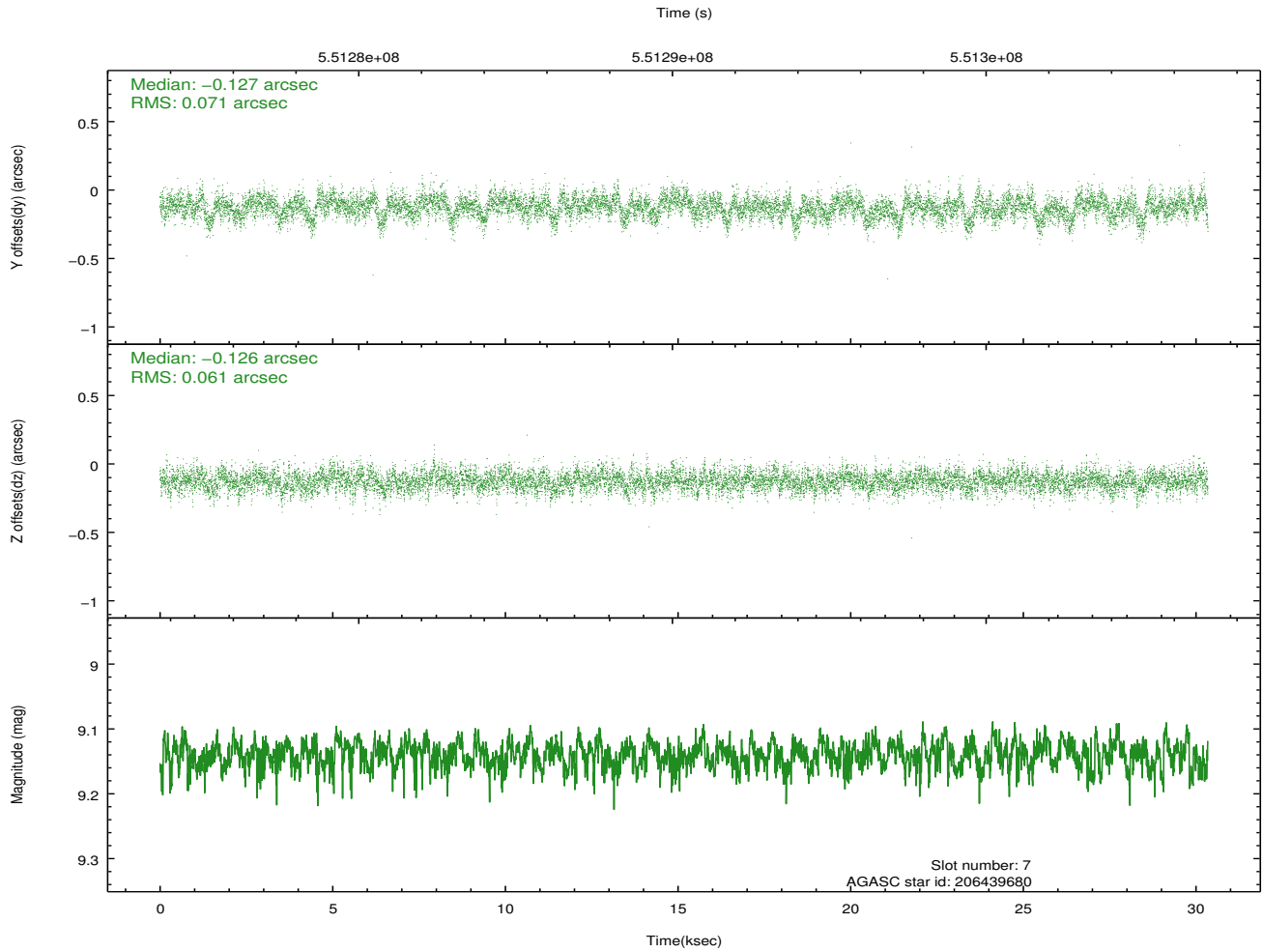
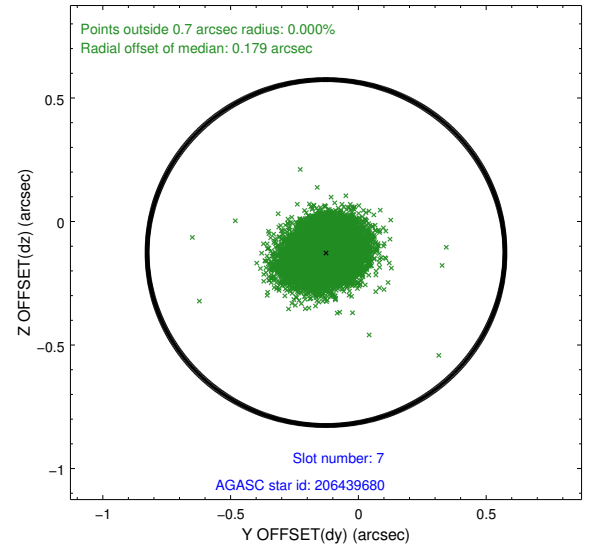
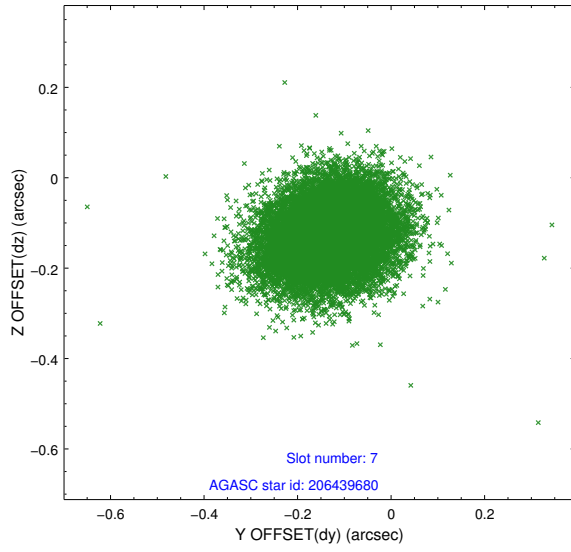
2.4.3 Slot 5



2.4.4 Slot 6

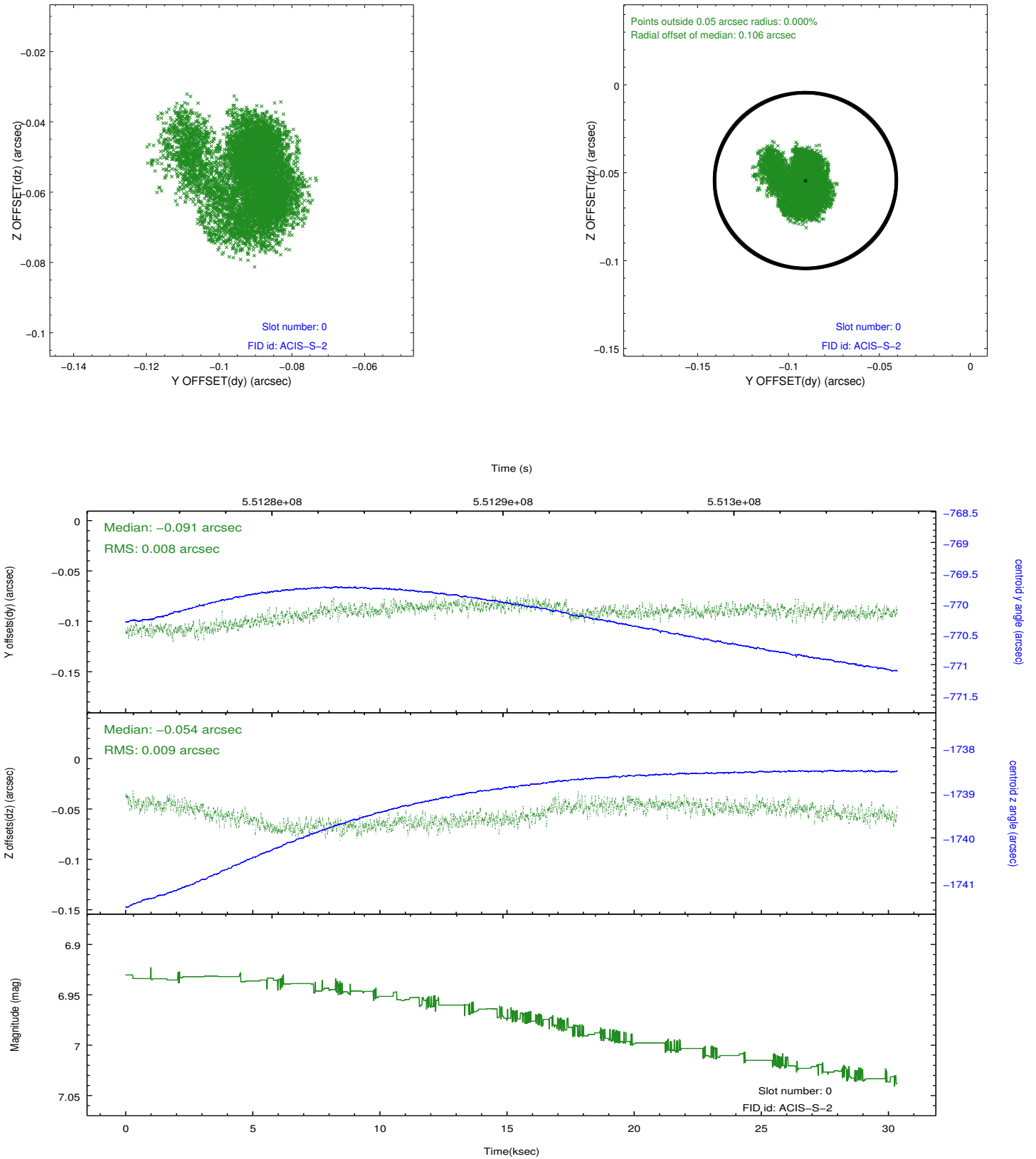


2.4.5 Slot 7

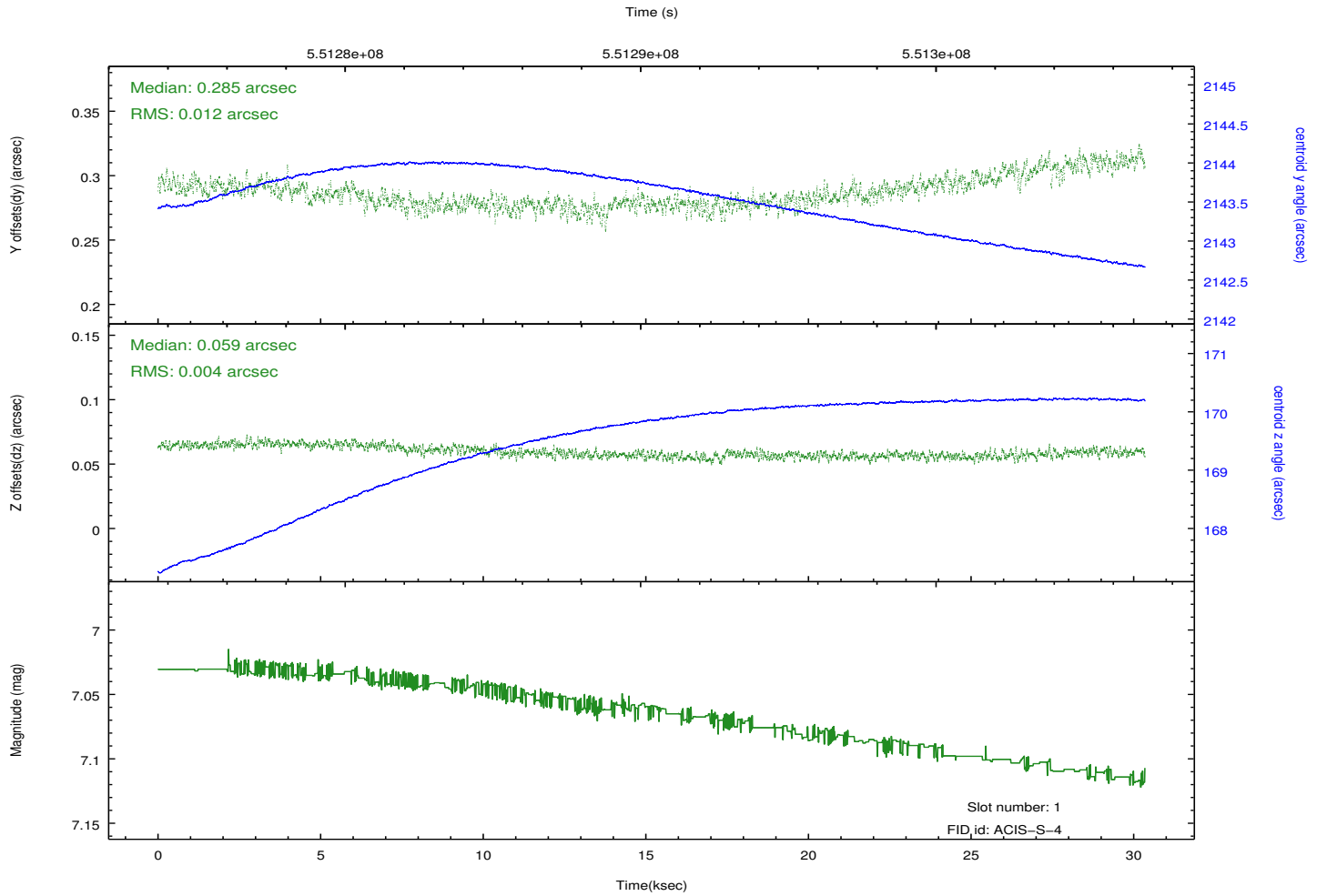
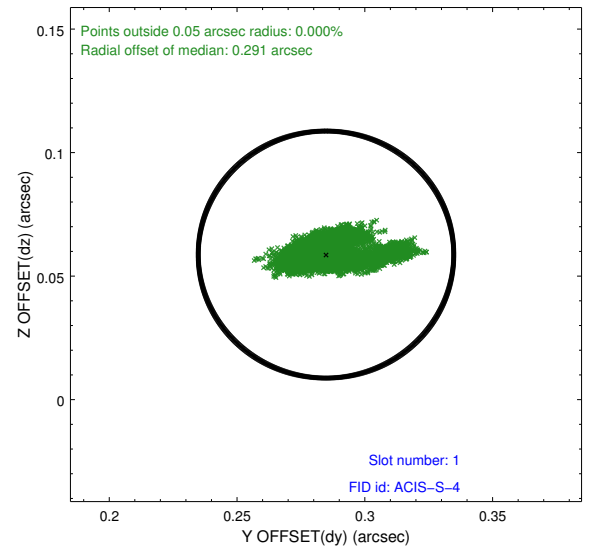
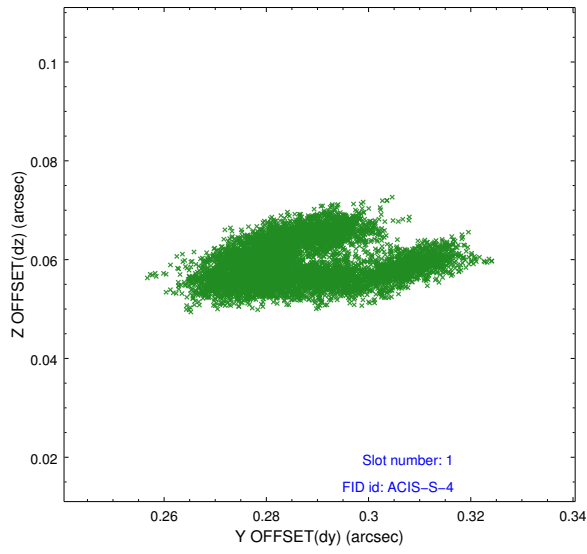


2.5 FID Slots

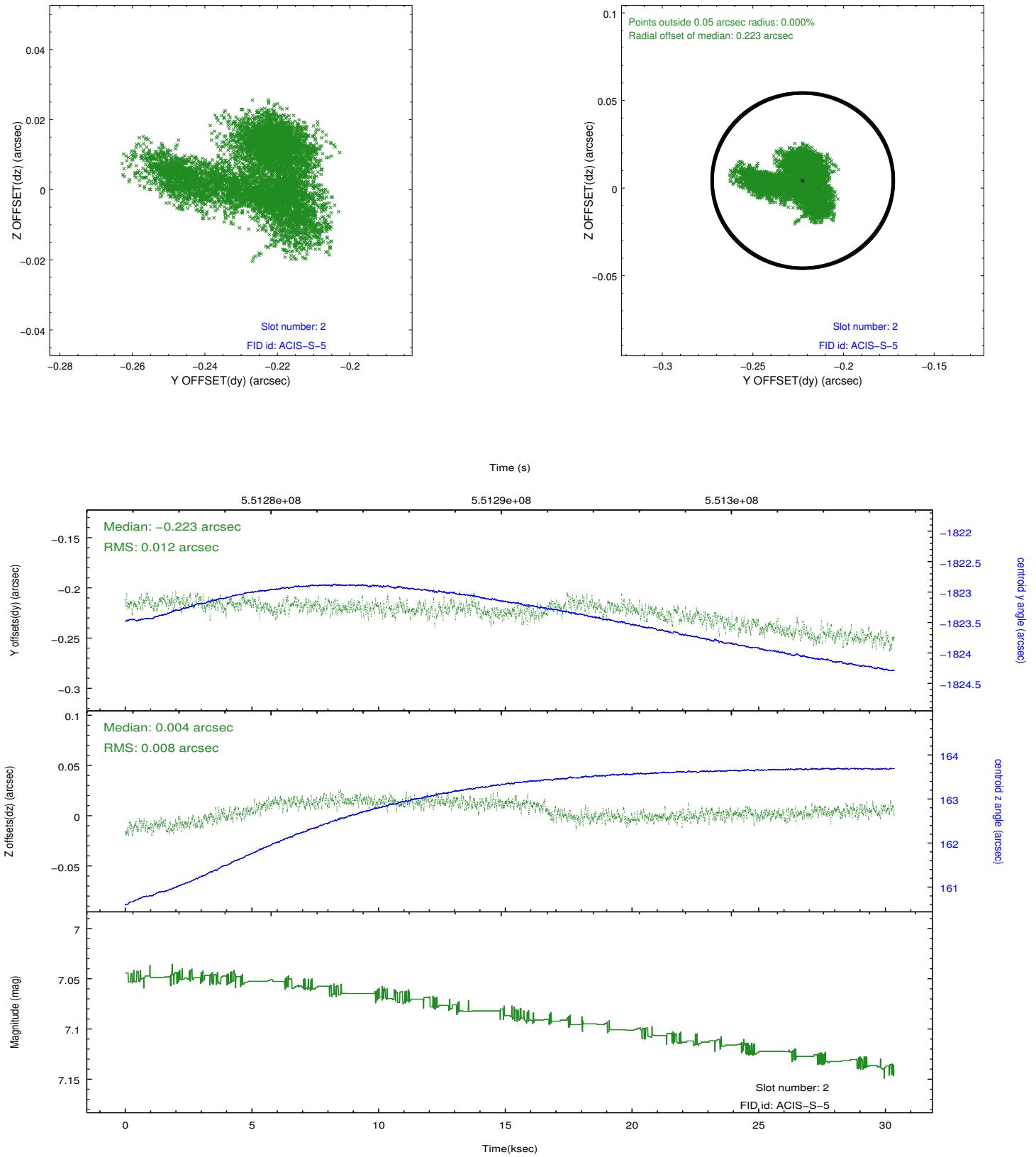
2.5.1 Slot 0



2.5.2 Slot 1



2.5.3 Slot 2



A Summary

A.1 Status

V&V Scientist	Joy Nichols
V&V Date (YYYY-MM-DD)	2015.06.22
V&V Edition	1
V&V Disposition and Status	OK
V&V Charge Time	30.286573696971

A.2 Comments