

V&V Reference Report

L2 ASCDS Version : 10.4

Observation 16975 - L2 Version 1
Chandra X-Ray Center

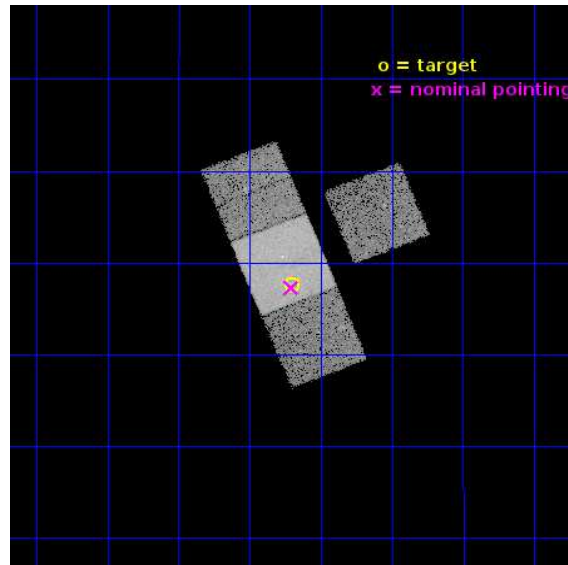
L2 Processing Date : Jun 13 2015

Contents

1	Front	2
2	OBI	3
2.1	OBI	3
2.1.1	Images	3
2.1.2	Bias	3
2.1.3	Parameters	4
2.1.4	Events	4
2.2	Compared Parameters	5
2.3	Aspect	6
2.4	Star Slots	9
2.4.1	Slot 3	9
2.4.2	Slot 4	10
2.4.3	Slot 5	11
2.4.4	Slot 6	12
2.4.5	Slot 7	13
2.5	FID Slots	14
2.5.1	Slot 0	14
2.5.2	Slot 1	15
2.5.3	Slot 2	16
A	Summary	17
A.1	Status	17
A.2	Comments	17

1 Front

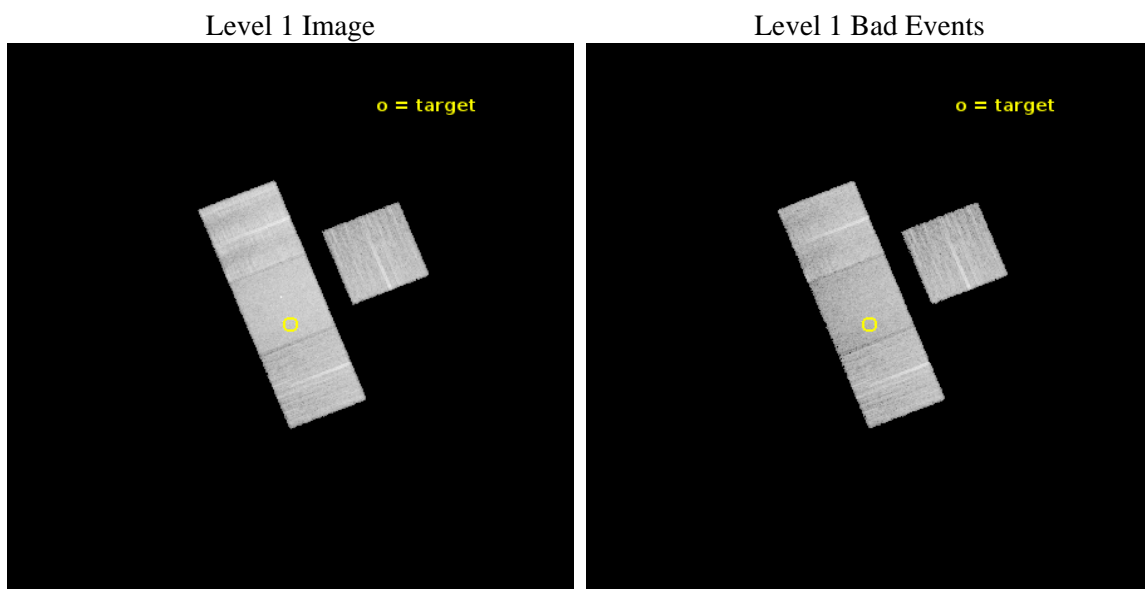
seq_num	601168	Sequence number
obs_id	16975	Observation id
title	Searching for Accreting Black Holes in Lyman Continuum Emitters	Pr
observer	Prof. Philip Kaaret	Principal investigator
object	GALEX J100712.2+065736	Source name
dtcycle	0	
cycle	P	events from which exps? Prim/Second/Both
ra_targ	151.8	Observer's specified target RA [deg]
dec_targ	6.96	Observer's specified target Dec [deg]
ra_nom	151.8015915953	Nominal RA [deg]
dec_nom	6.9547967577329	Nominal Dec [deg]
roll_nom	248.04435668634	Nominal Roll [deg]
revision	1	Processing version of data
ontime	19461.800149798	Sum of GTIs [s]
livetime	19207.517403272	Livetime [s]
ontime3	19461.800149798	Sum of GTIs [s]
ontime6	19461.800149798	Sum of GTIs [s]
ontime7	19461.800149798	Sum of GTIs [s]
ontime8	19461.800149798	Sum of GTIs [s]
l2events	92744	Number of level 2 events



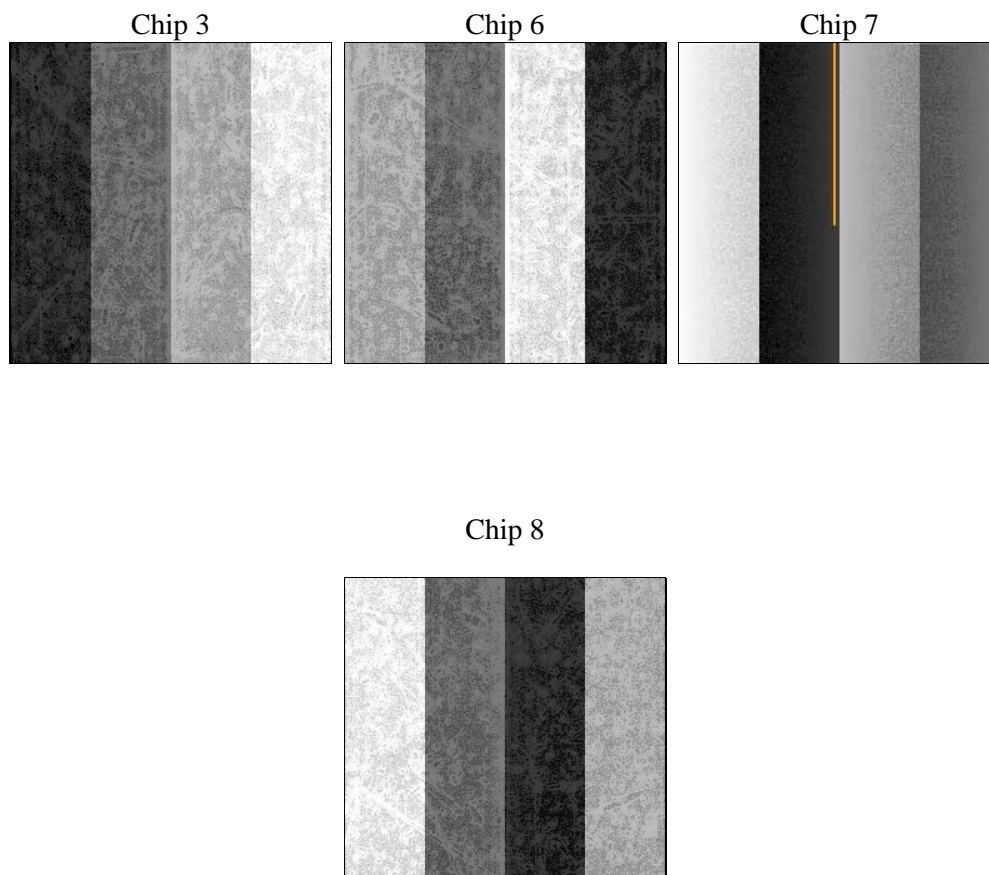
2 OBI

2.1 OBI

2.1.1 Images



2.1.2 Bias



2.1.3 Parameters

obi_num	0	Obi number	sched_exp_time	19400.000000	[s] Scheduled observation exposure time
ascdsver	10.4	Processing system revision	ontime	19461.800149798	Sum of GTIs [s]
caldsver	4.6.7	 	ontime3	19461.800149798	Sum of GTIs [s]
date	2015-06-13T14:22:59	Date and time of file creation	ontime6	19461.800149798	Sum of GTIs [s]
revision	1	Processing version of data	ontime7	19461.800149798	Sum of GTIs [s]
			ontime8	19461.800149798	Sum of GTIs [s]
			l1events	481991	Number of level 1 events

2.1.4 Events

	ccd 3	ccd 6	ccd 7	ccd 8
level 1 events	97872	106821	135705	141593
rejected events	86680	94411	75846	99797
rejected %	88%	88%	55%	70%

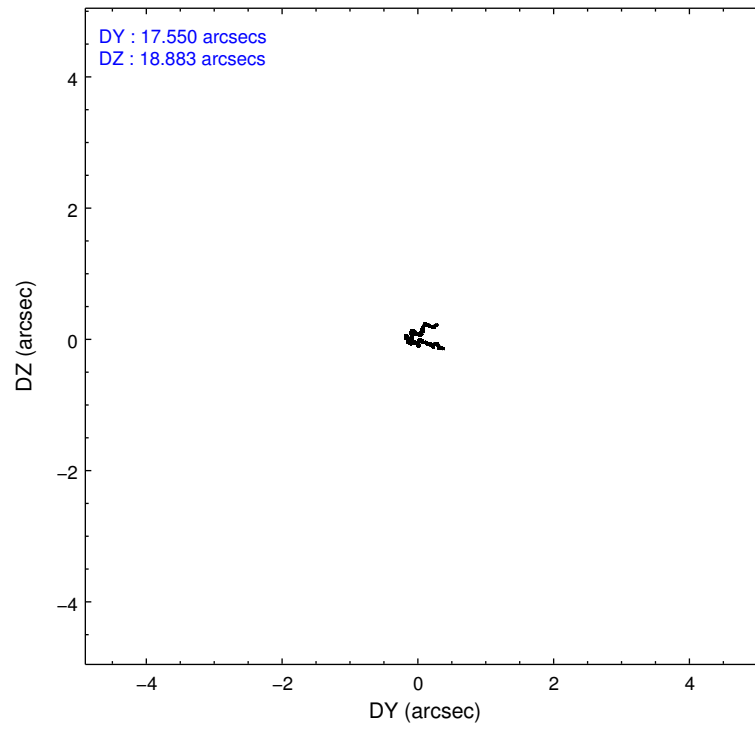
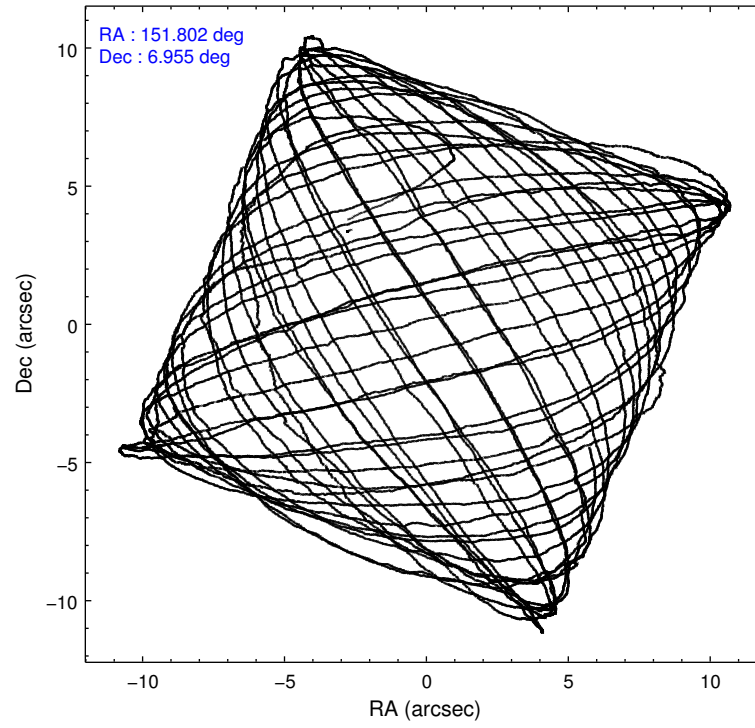
	ccd 3	ccd 6	ccd 7	ccd 8
grade 0 events	4025	4226	5396	12970
	4%	3%	3%	9%
grade 1 events	69	45	179	113
	0%	0%	0%	0%
grade 2 events	2459	2896	12526	9341
	2%	2%	9%	6%
grade 3 events	1203	1269	5088	4543
	1%	1%	3%	3%
grade 4 events	1237	1202	5045	4459
	1%	1%	3%	3%
grade 5 events	5174	5204	13895	7612
	5%	4%	10%	5%
grade 6 events	2272	2818	31824	10511
	2%	2%	23%	7%
grade 7 events	81433	89161	61752	92044
	83%	83%	45%	65%

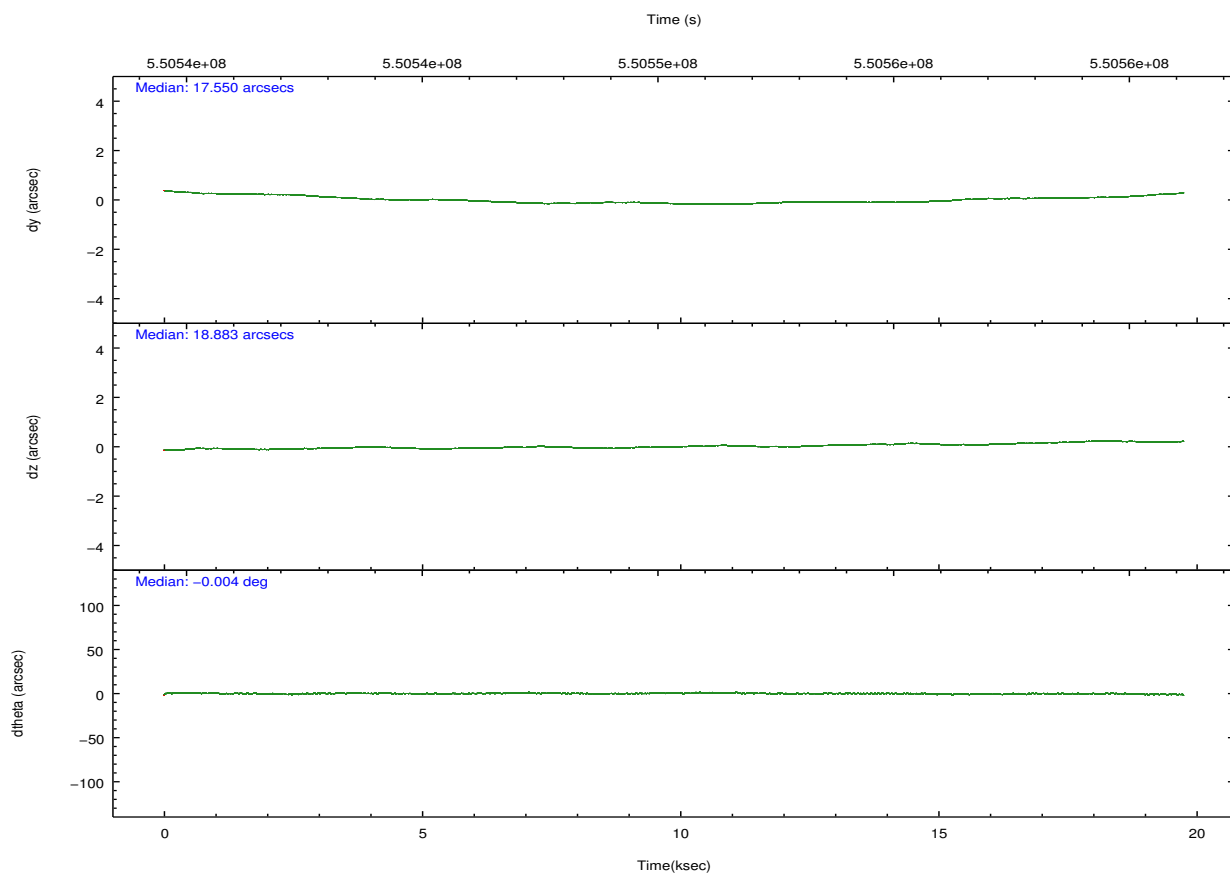
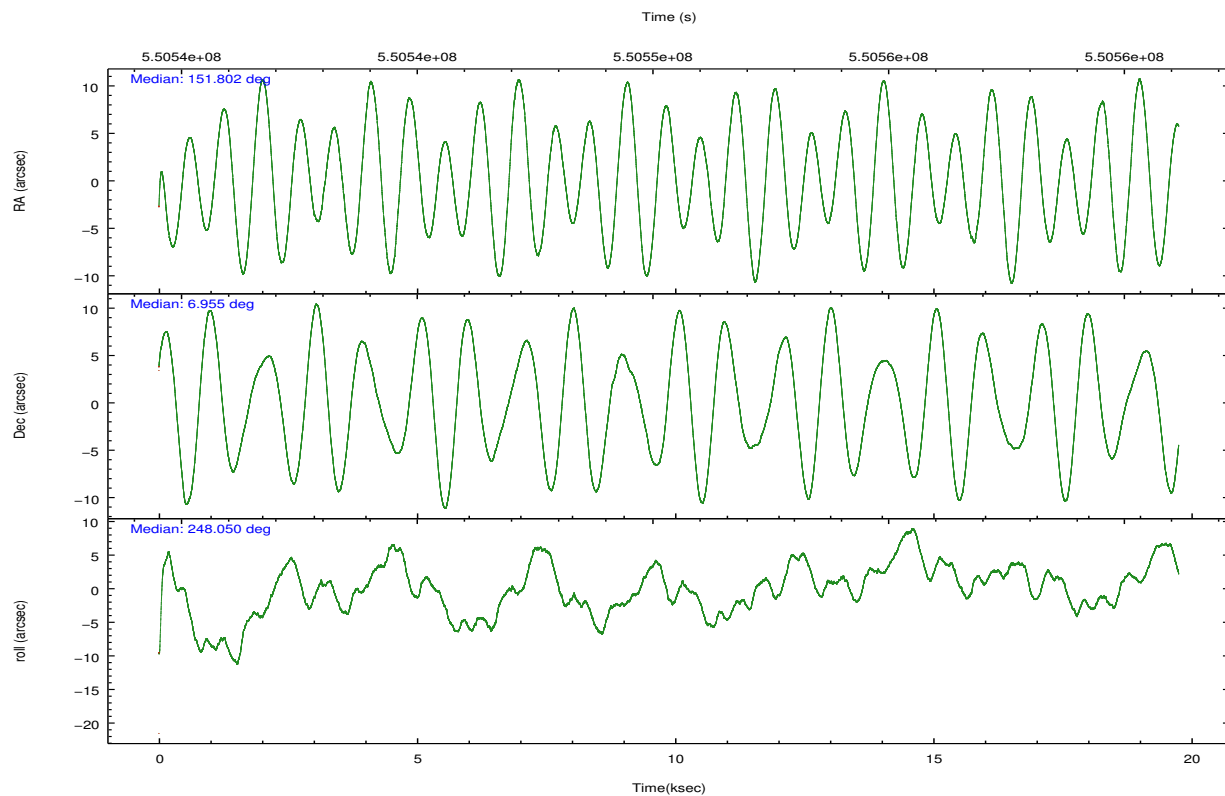
2.2 Compared Parameters

Parameter	Planned	Actual
Instrument	ACIS	ACIS
Detector	ACIS-3678	ACIS-3678
Grating	NONE	NONE
Data mode	VFAINT	VFAINT
Observation mode	POINTING	POINTING
[deg] Pointing RA	151.797370	151.8015915952994
[deg] Pointing Dec	6.981929	6.954796757732879
[deg] Pointing Roll	247.888248	248.0443566863361
[mm] SIM focus pos	-0.684267	-0.6828225247311905
[mm] SIM defocus	0	0.001444936568705701
[mm] SIM translation stage pos	-190.132523	-190.1400660498719
[mm] SIM translation stage offset	0	0.00754346686406393
[s] Observation start time (MET)	550540820.184000	550539845.49014
Observation start date	2015-06-12T23:59:13	2015-06-12T23:44:05
[s] Observation end time (MET)	550560220.184000	550560768.8163199
Observation end date	2015-06-13T05:22:33	2015-06-13T05:32:48
Read mode	TIMED	TIMED

Parameter	Planned	Actual
Obspar format version number	7	7
Obspar file type	PREDICTED	ACTUAL
Obspar update status	NONE	UPDATED
CCD I0 on	N	N
CCD I1 on	N	N
CCD I2 on	N	N
CCD I3 on	O1	Y
CCD S0 on	N	N
CCD S1 on	N	N
CCD S2 on	O2	Y
CCD S3 on	Y	Y
CCD S4 on	O3	Y
CCD S5 on	N	N
Number of optional ACIS chips dropped	0	0
On-chip summing requested	N	N
Subarray requested	NONE	NONE
Alternating exposures requested	N	N
[s] Primary exposure time	0.000000	3.1

2.3 Aspect



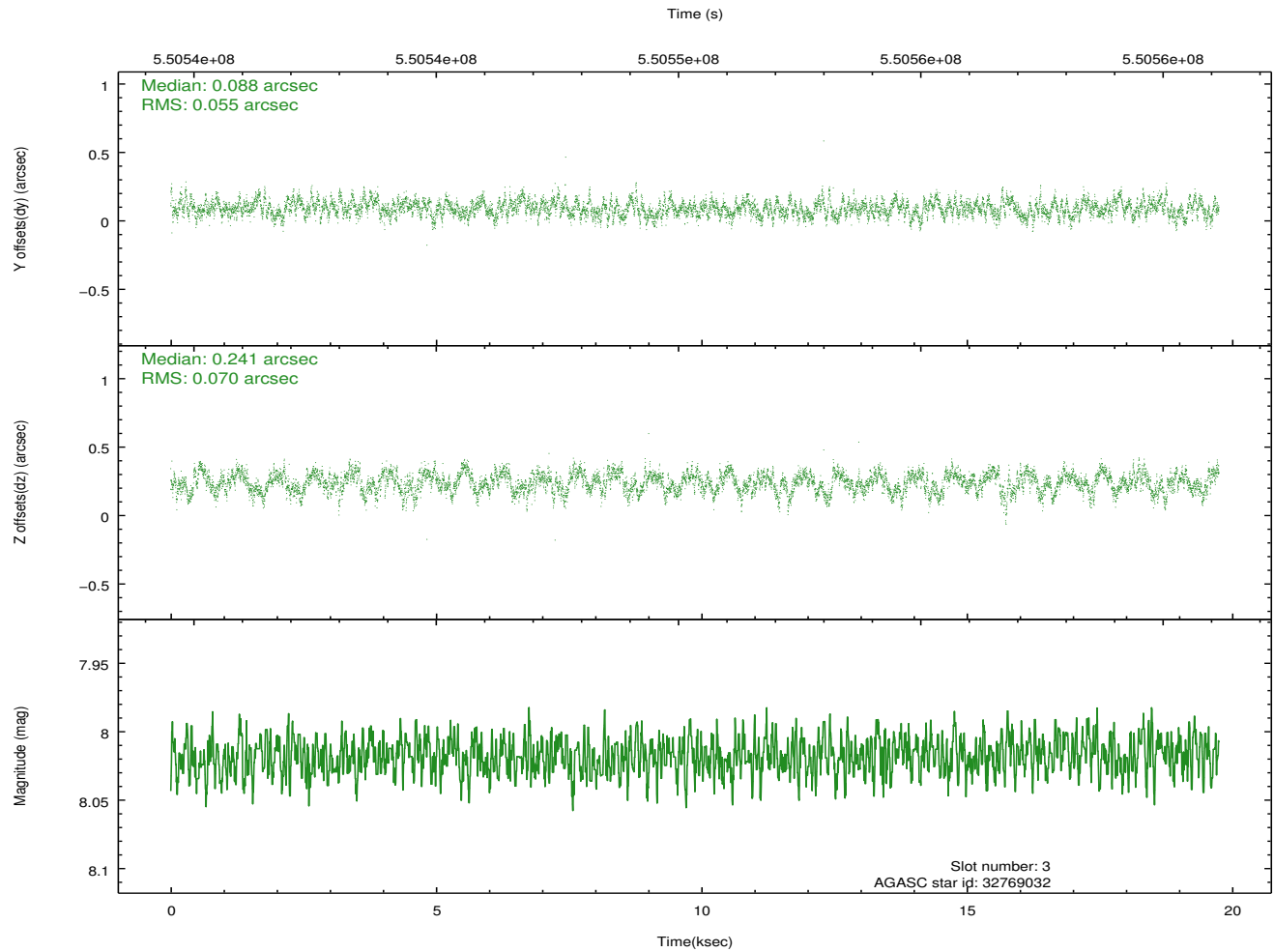
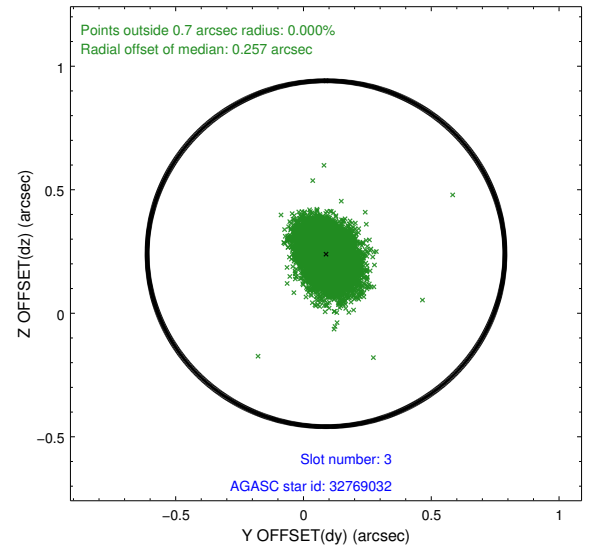
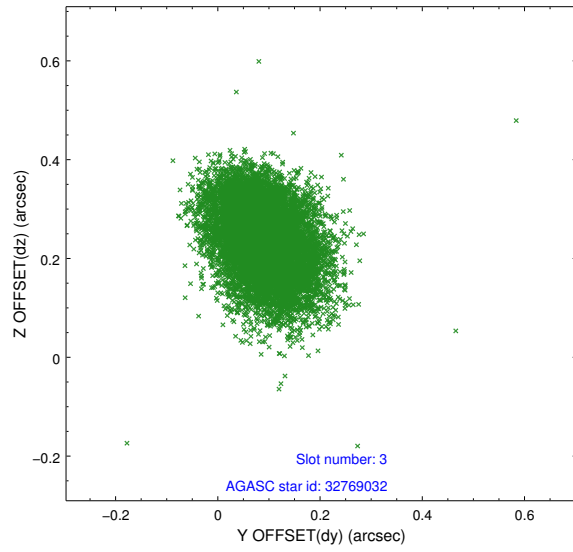


Slot Statistics

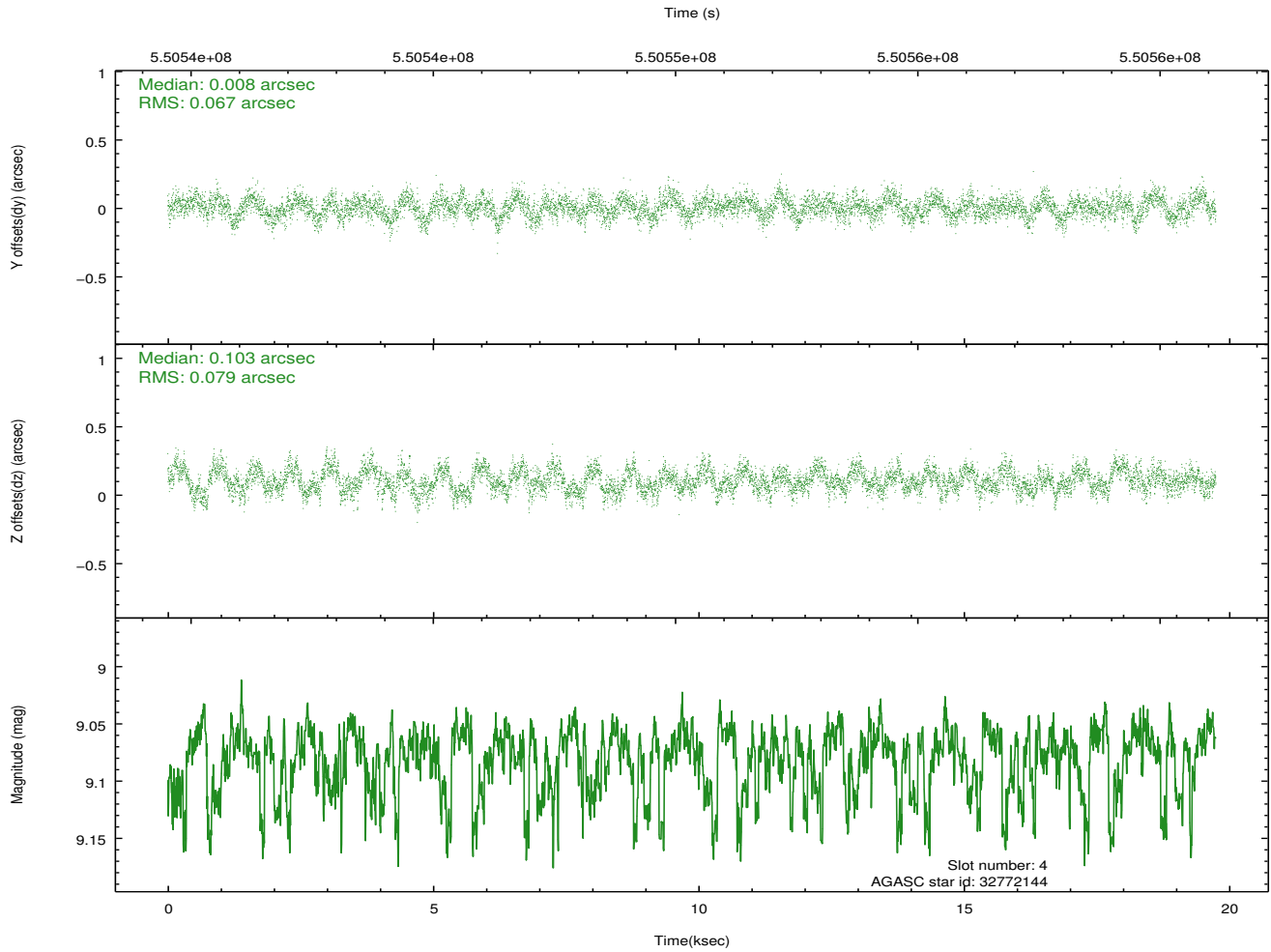
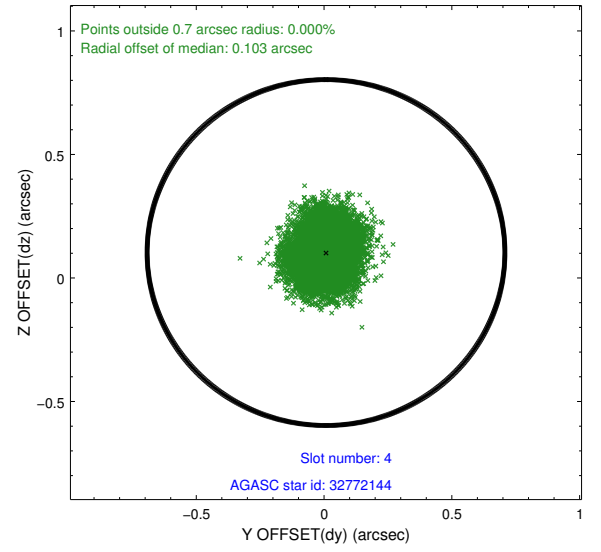
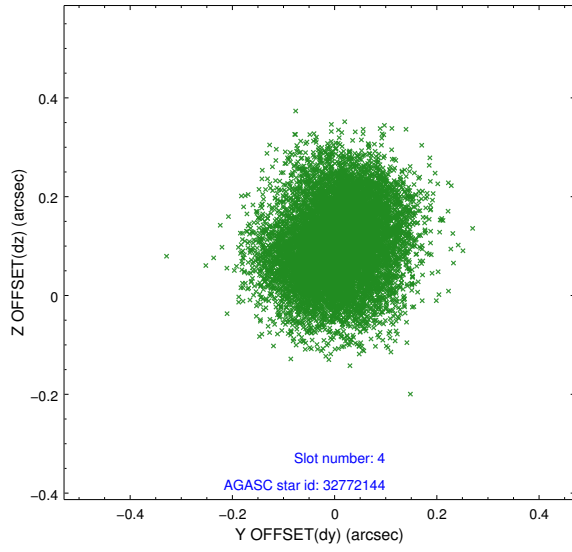
slot	status	used	id	mag	n_pts	med_dy	med_dz	dr1	dr2	ra	dec	mean_y	mean_z
0	FID		ACIS-S-2	6.98	4818	-0.106	-0.071	0.009	0.014	0.000000	0.000000	-770.70	-1740.46
1	FID		ACIS-S-4	7.06	4818	0.309	0.070	0.008	0.015	0.000000	0.000000	2142.90	167.96
2	FID		ACIS-S-5	7.09	4818	-0.234	0.009	0.009	0.015	0.000000	0.000000	-1823.43	161.79
3	GUIDE	used	32769032	8.02	9633	0.088	0.241	0.095	0.152	151.656515	6.905548	444.96	-360.70
4	GUIDE	used	32772144	9.08	9629	0.008	0.103	0.112	0.175	151.724280	6.416450	1985.28	524.06
5	GUIDE	used	32773448	9.08	9628	-0.322	0.249	0.117	0.188	152.201390	6.717553	337.77	1696.79
6	GUIDE	used	32778488	8.60	9630	0.207	-0.464	0.087	0.142	151.923661	6.292767	2129.00	1352.33
7	GUIDE	used	108800072	9.32	9623	0.019	-0.125	0.125	0.203	152.088298	7.573313	-2363.07	160.69

2.4 Star Slots

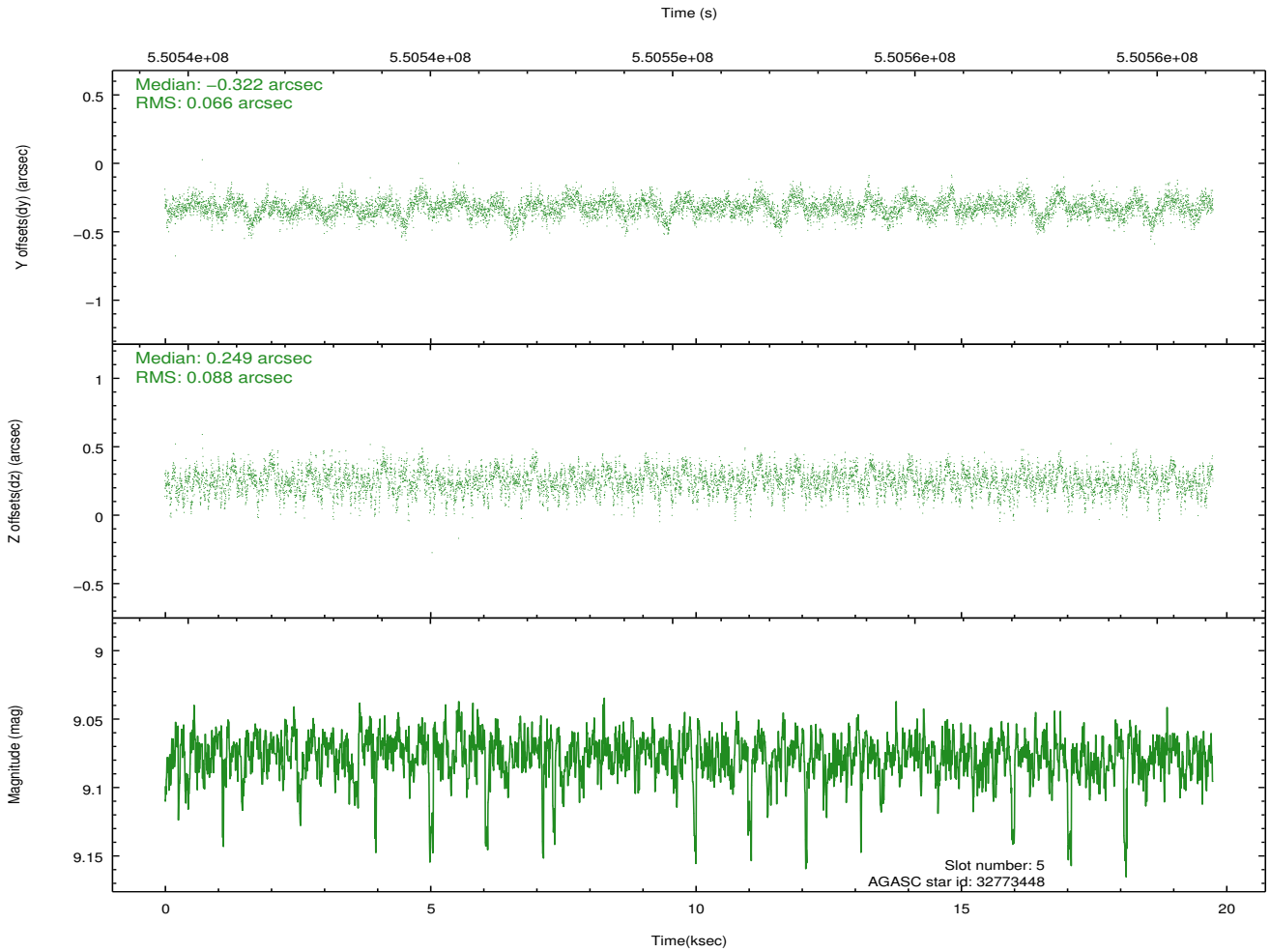
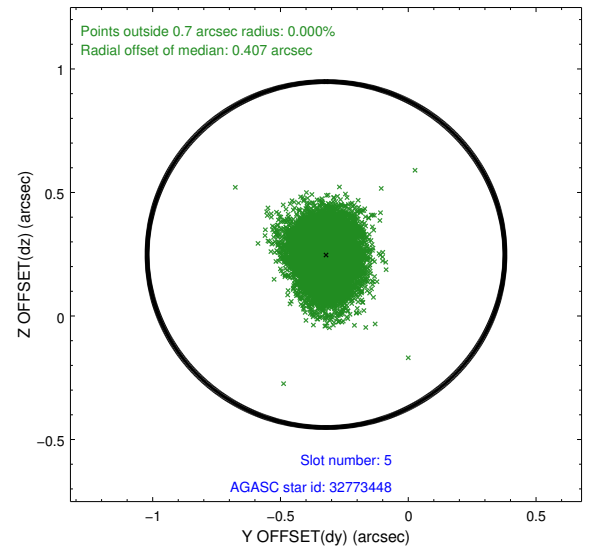
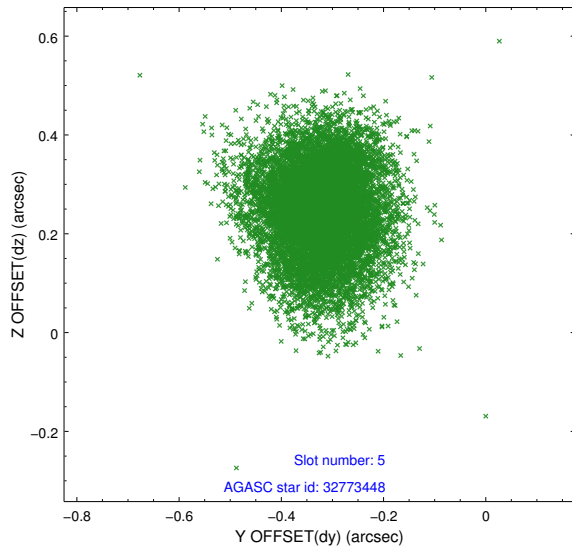
2.4.1 Slot 3



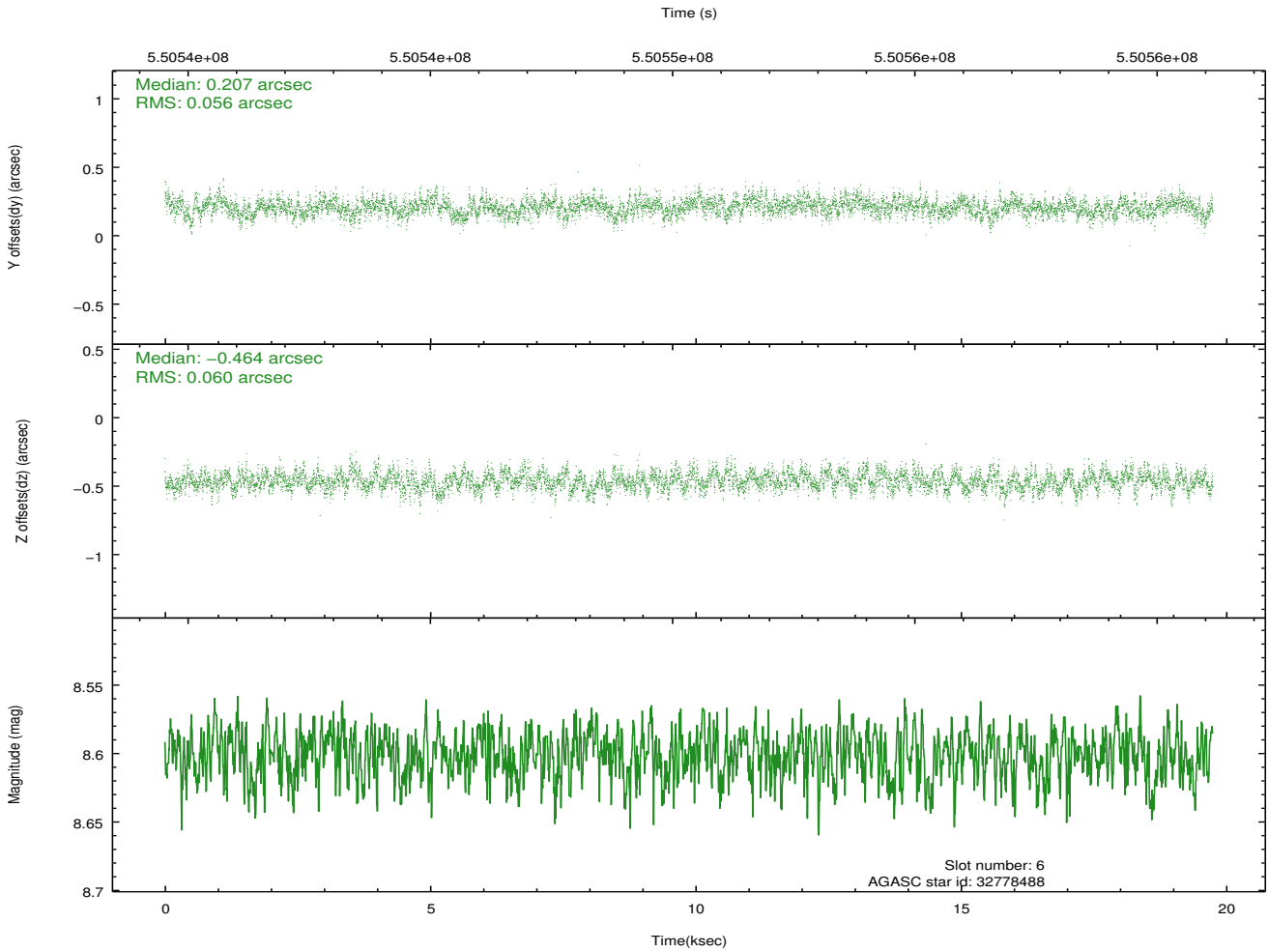
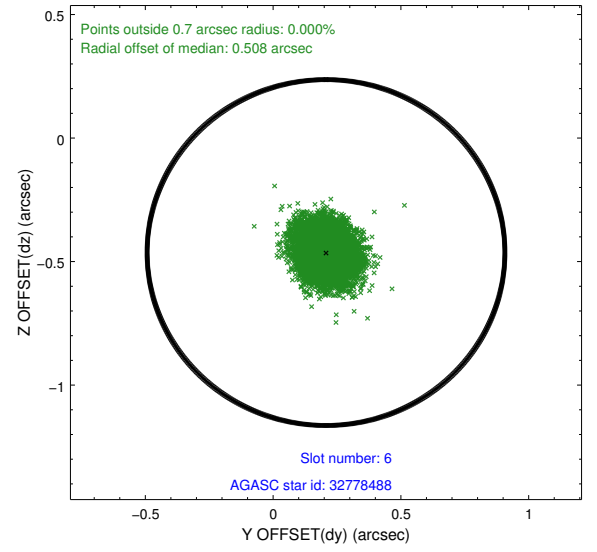
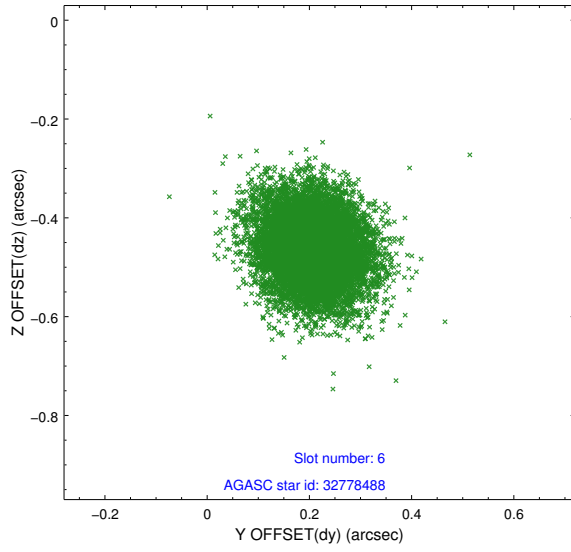
2.4.2 Slot 4



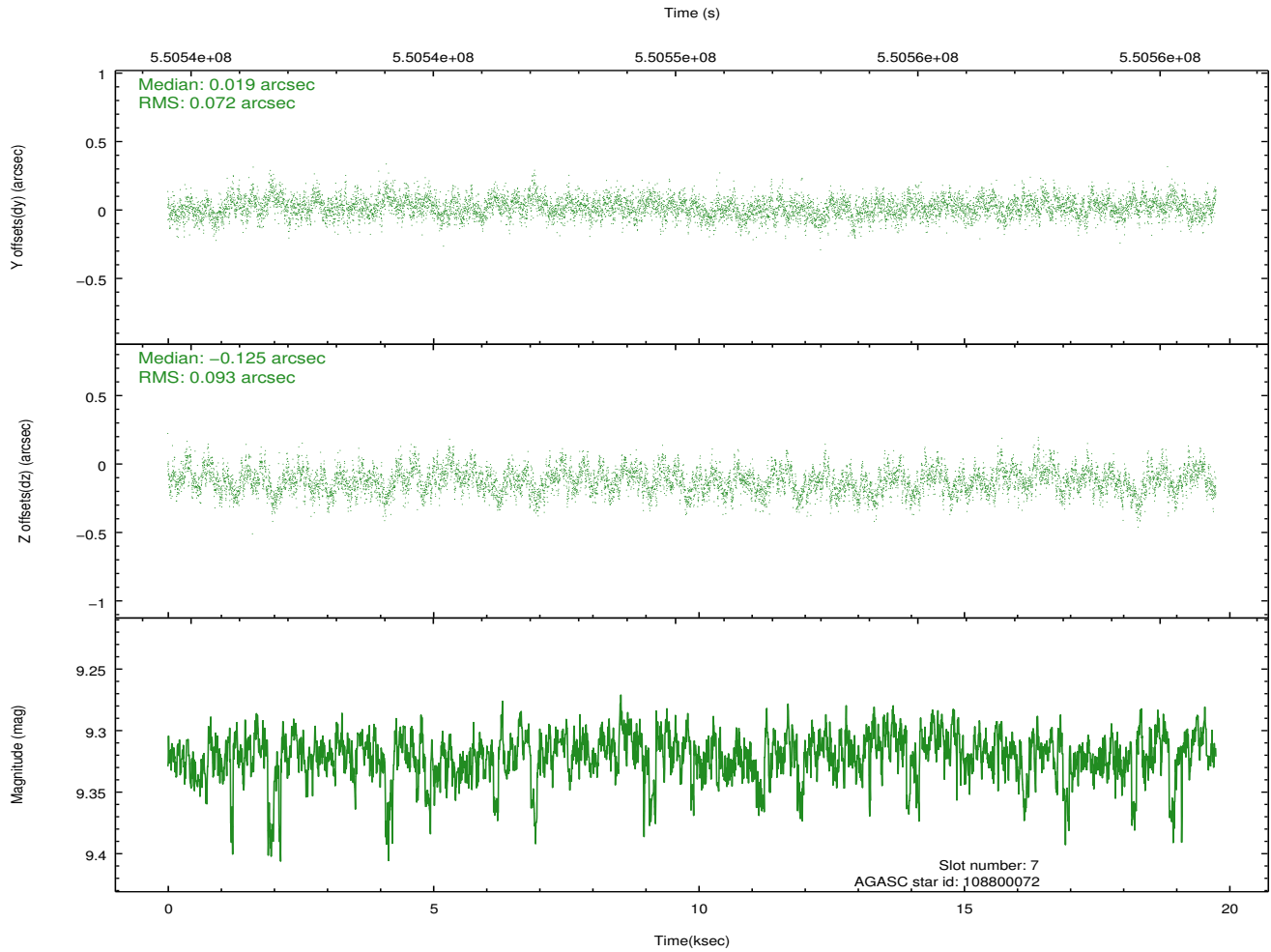
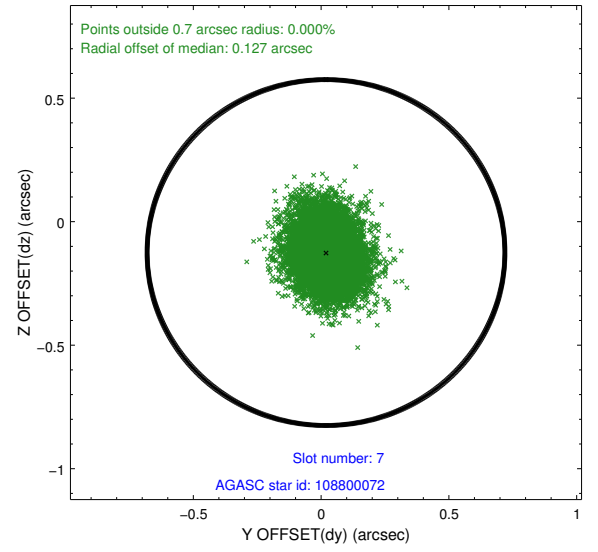
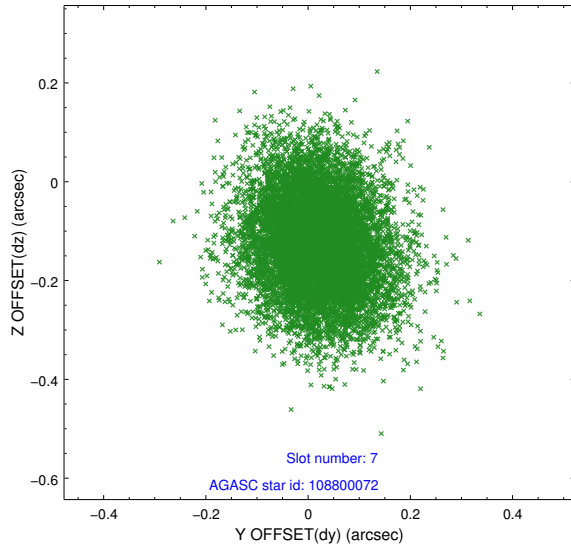
2.4.3 Slot 5



2.4.4 Slot 6

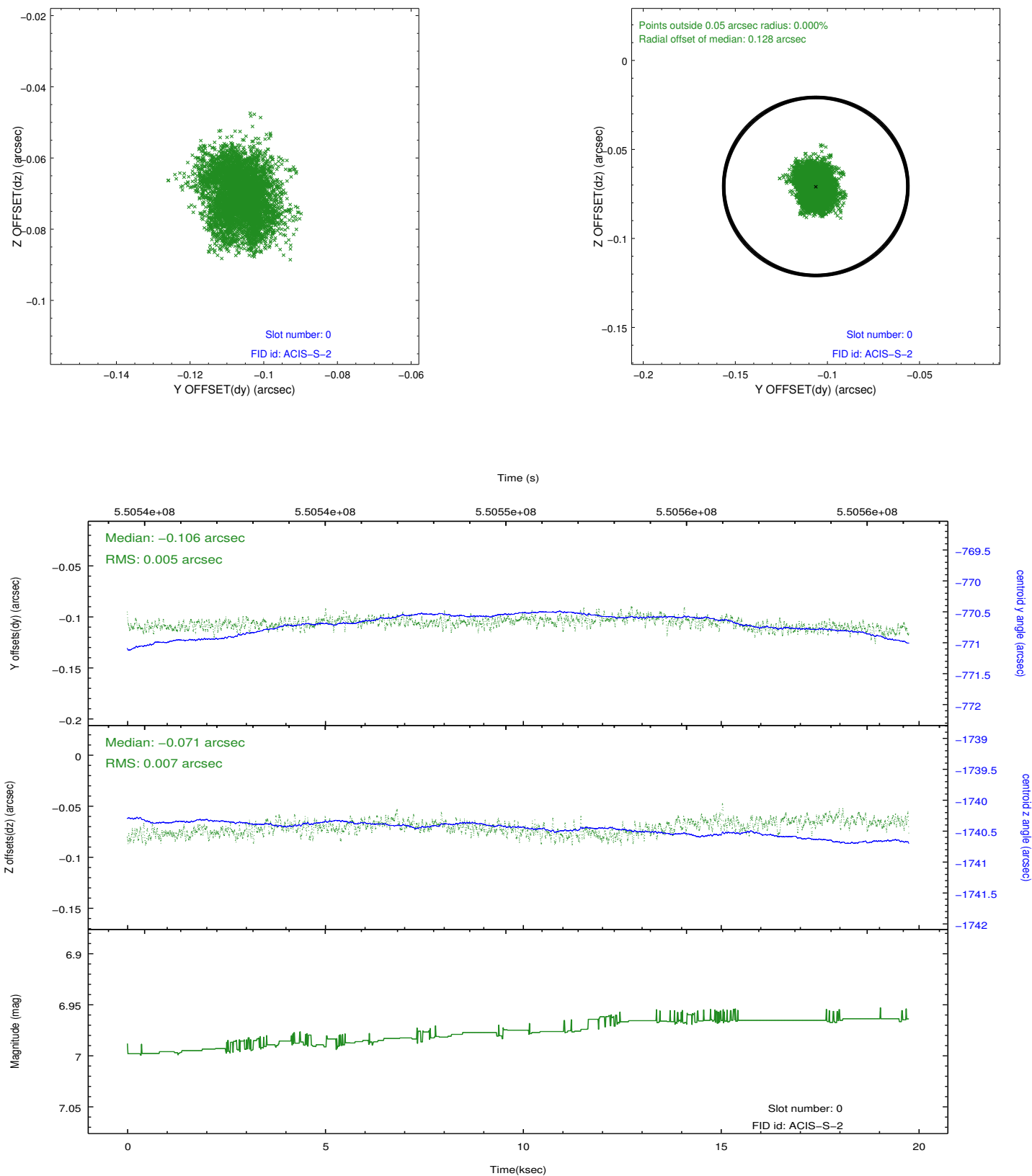


2.4.5 Slot 7

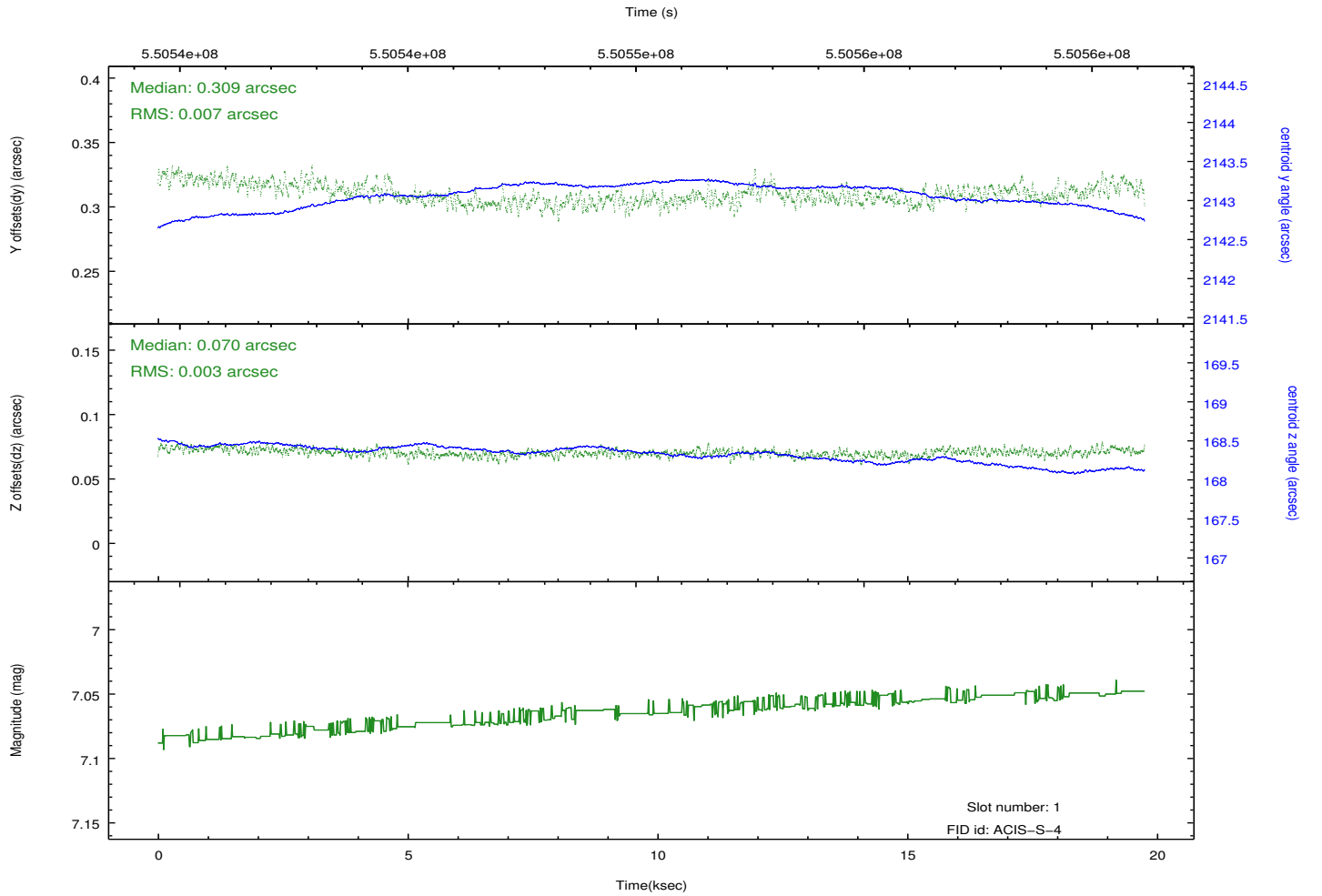
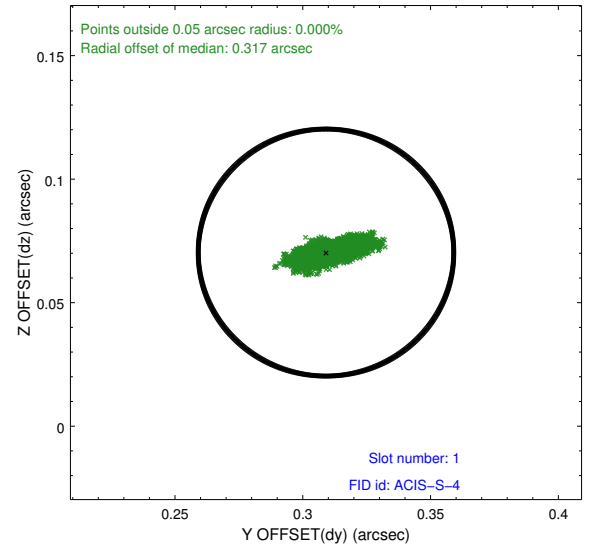
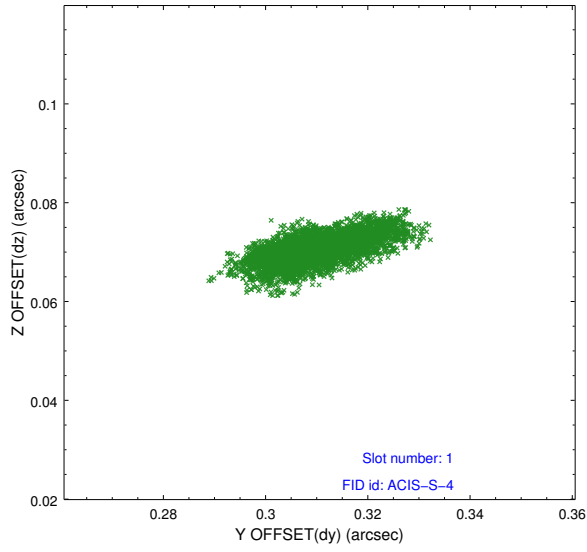


2.5 FID Slots

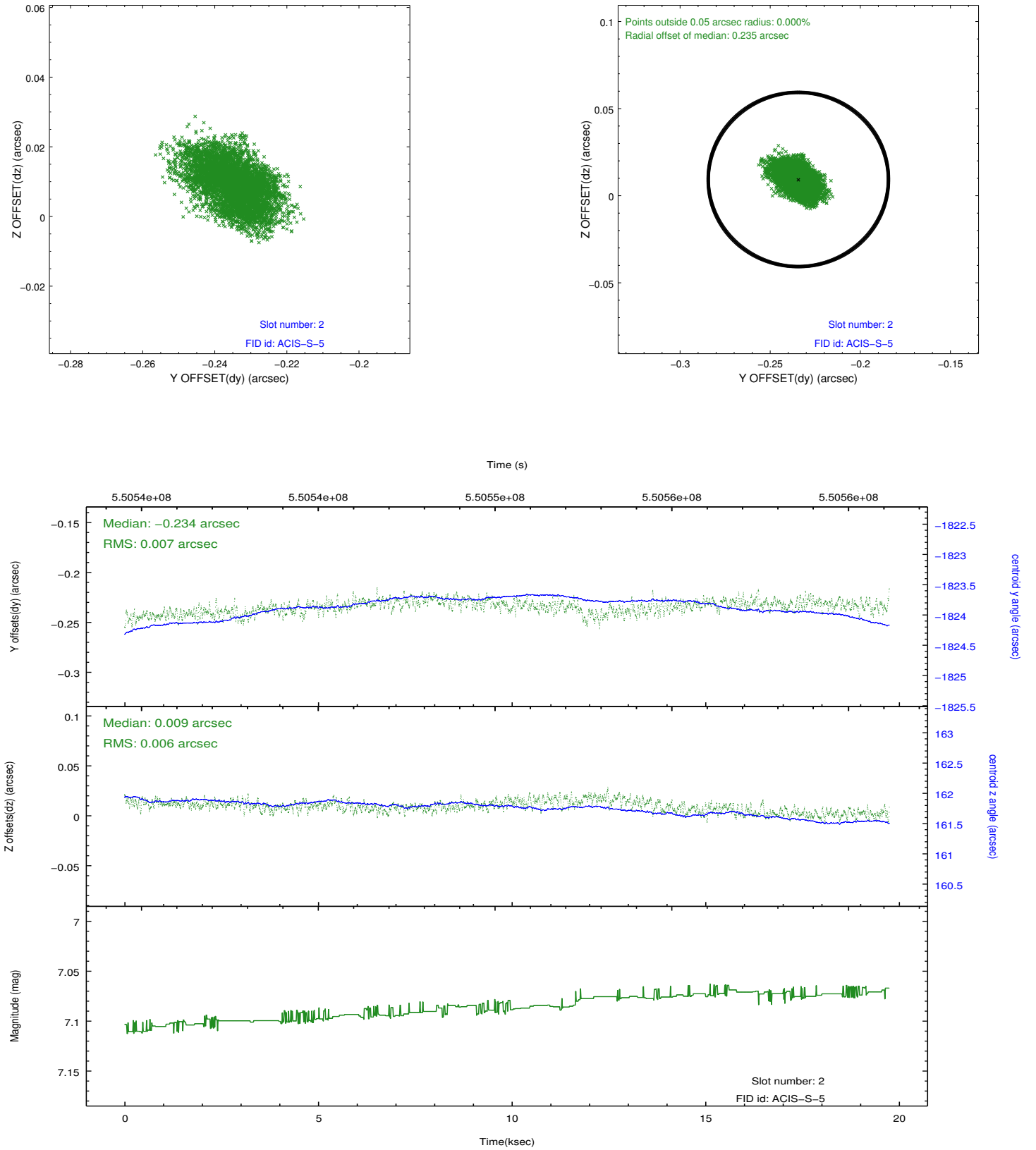
2.5.1 Slot 0



2.5.2 Slot 1



2.5.3 Slot 2



A Summary

A.1 Status

V&V Scientist	Beth Sundheim
V&V Date (YYYY-MM-DD)	2015.06.13
V&V Edition	1
V&V Disposition and Status	OK
V&V Charge Time	19.461800149798

A.2 Comments