

V&V Reference Report

L2 ASCDS Version : 10.4.2.1

Observation 16945 - L2 Version 1
Chandra X-Ray Center

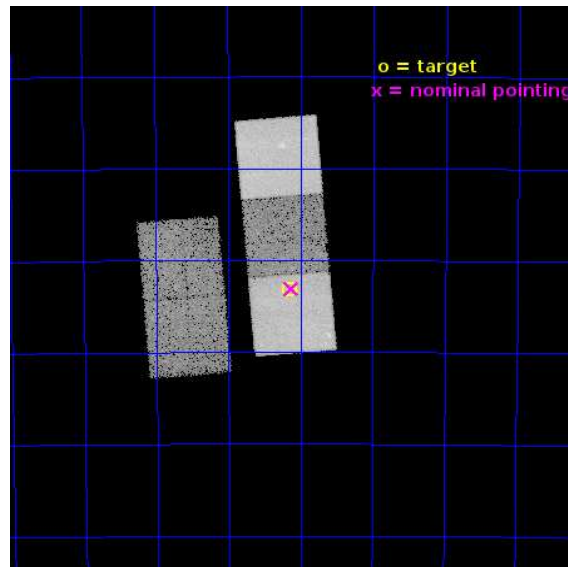
L2 Processing Date : Nov 29 2015

Contents

1	Front	2
2	OBI	3
2.1	OBI	3
2.1.1	Images	3
2.1.2	Bias	3
2.1.3	Parameters	4
2.1.4	Events	4
2.2	Compared Parameters	5
2.3	Aspect	6
2.4	Star Slots	9
2.4.1	Slot 3	9
2.4.2	Slot 4	10
2.4.3	Slot 5	11
2.4.4	Slot 6	12
2.4.5	Slot 7	13
2.5	FID Slots	14
2.5.1	Slot 0	14
2.5.2	Slot 1	15
2.5.3	Slot 2	16
A	Summary	17
A.1	Status	17
A.2	Comments	17

1 Front

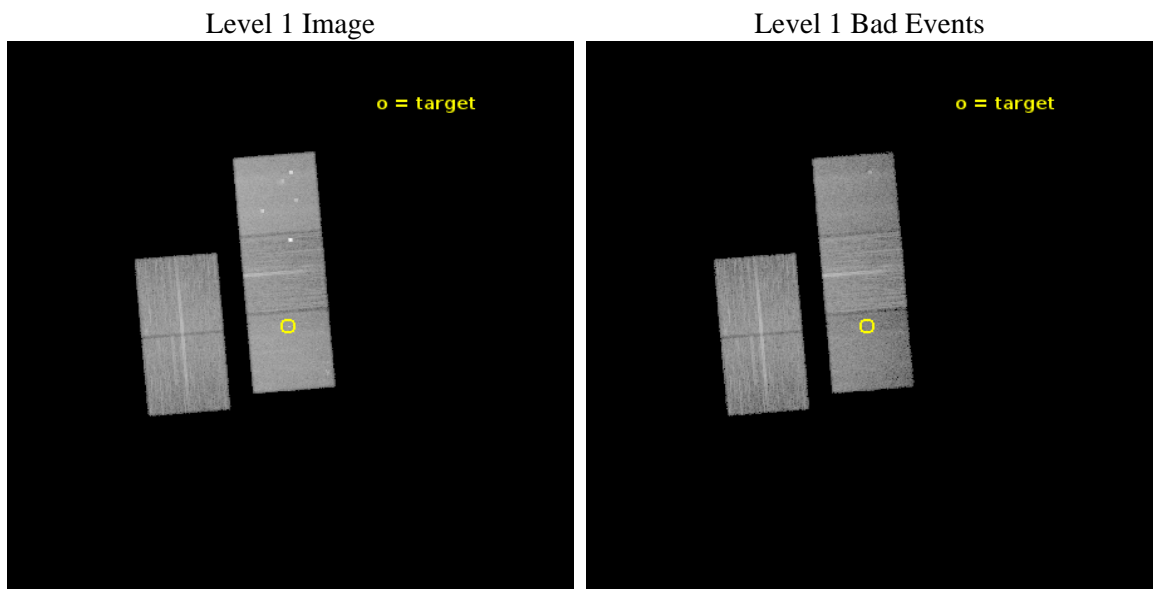
seq_num	502463	Sequence number
obs_id	16945	Observation id
title	A possible near-infrared counterpart for the isolated neutron star in the Carina Nebula	Proposal title
observer	Dr. Adriana Pires	Principal investigator
object	2XMM J104608.7-594306	Source name
dtcycle	0	
cycle	P	events from which exps? Prim/Second/Both
ra_targ	161.53625	Observer's specified target RA [deg]
dec_targ	-59.718472	Observer's specified target Dec [deg]
ra_nom	161.53190928694	Nominal RA [deg]
dec_nom	-59.7183655347	Nominal Dec [deg]
roll_nom	85.153121146107	Nominal Roll [deg]
revision	1	Processing version of data
ontime	20056.749765873	Sum of GTIs [s]
livetime	19794.693564617	Livetime [s]
ontime2	20056.58560586	Sum of GTIs [s]
ontime3	20056.626645923	Sum of GTIs [s]
ontime5	20056.708725929	Sum of GTIs [s]
ontime6	20056.667685866	Sum of GTIs [s]
ontime7	20056.749765873	Sum of GTIs [s]
l2events	184217	Number of level 2 events



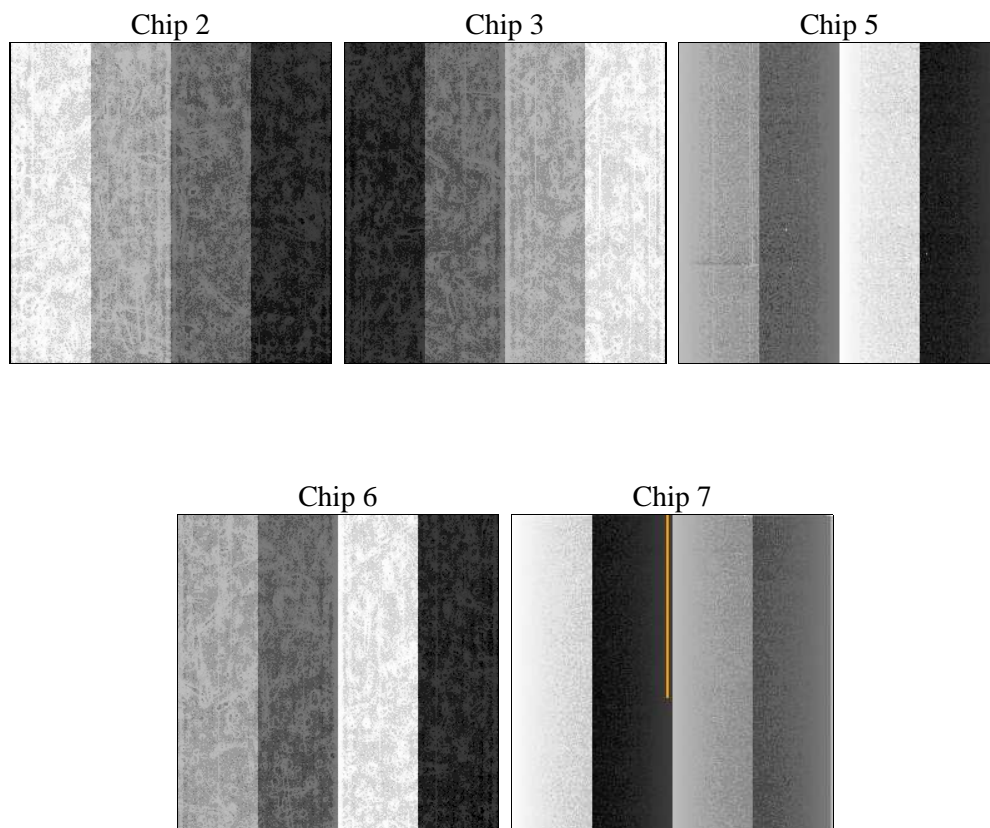
2 OBI

2.1 OBI

2.1.1 Images



2.1.2 Bias



2.1.3 Parameters

obi_num	2	Obi number	sched_exp_time	20000.000000	[s] Scheduled observation exposure time
ascdsver	10.4.2.1	Processing system revision	ontime	20056.749765873	Sum of GTIs [s]
caldsver	4.6.10a	 	ontime2	20056.58560586	Sum of GTIs [s]
date	2015-11-29T14:42:49	Date and time of file creation	ontime3	20056.626645923	Sum of GTIs [s]
revision	1	Processing version of data	ontime5	20056.708725929	Sum of GTIs [s]
			ontime6	20056.667685866	Sum of GTIs [s]
			ontime7	20056.749765873	Sum of GTIs [s]
			l1events	626284	Number of level 1 events

2.1.4 Events

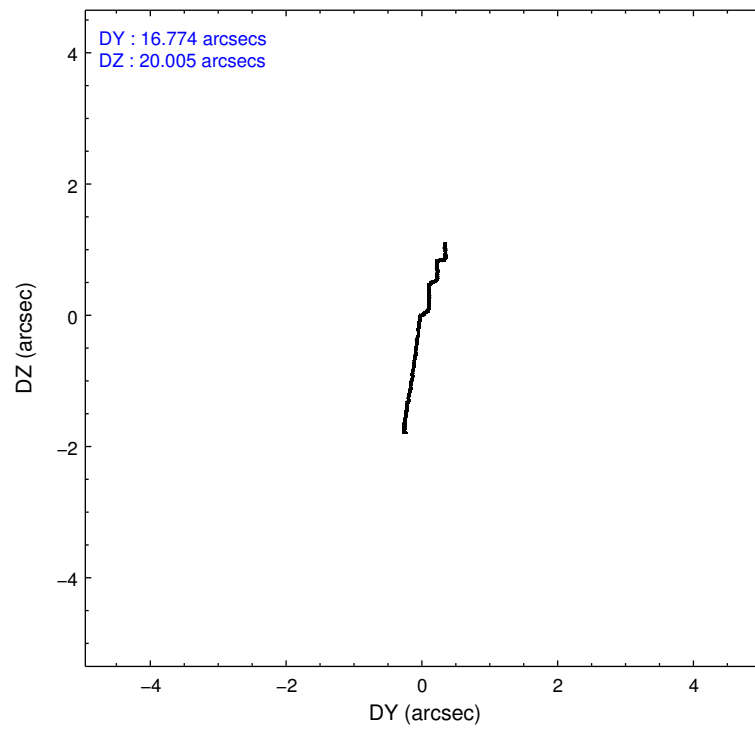
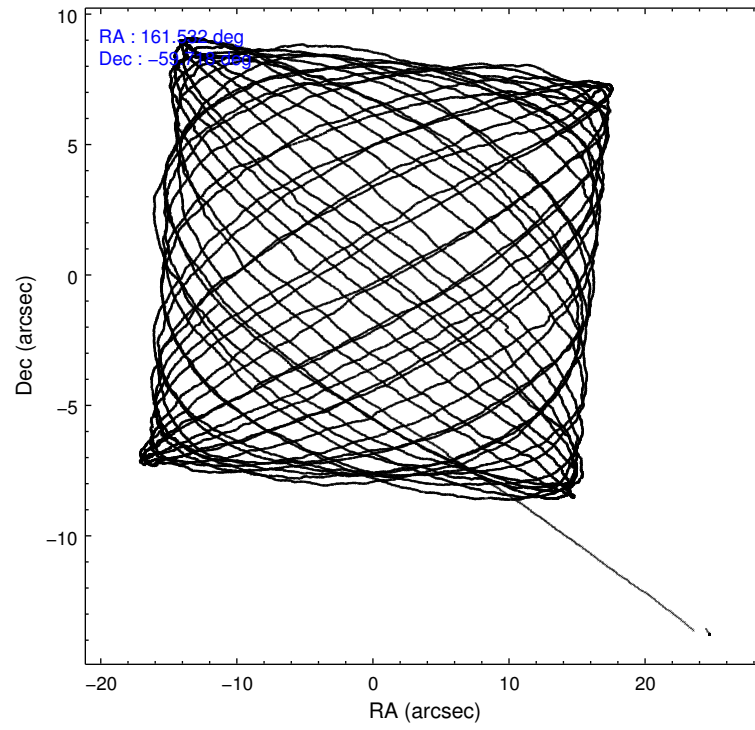
	ccd 2	ccd 3	ccd 5	ccd 6	ccd 7
level 1 events	112485	101371	160955	116883	134590
rejected events	97031	88089	78005	95485	64530
rejected %	86%	86%	48%	81%	47%

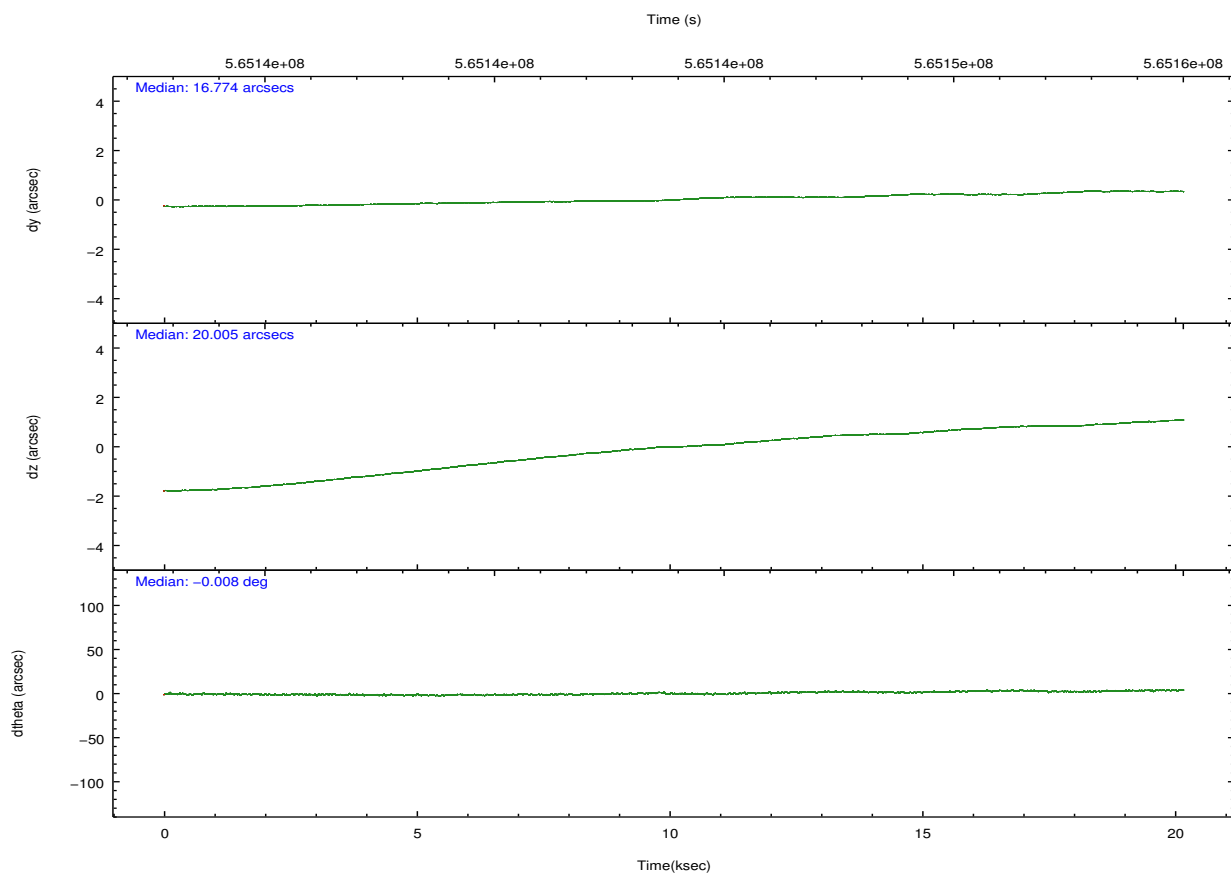
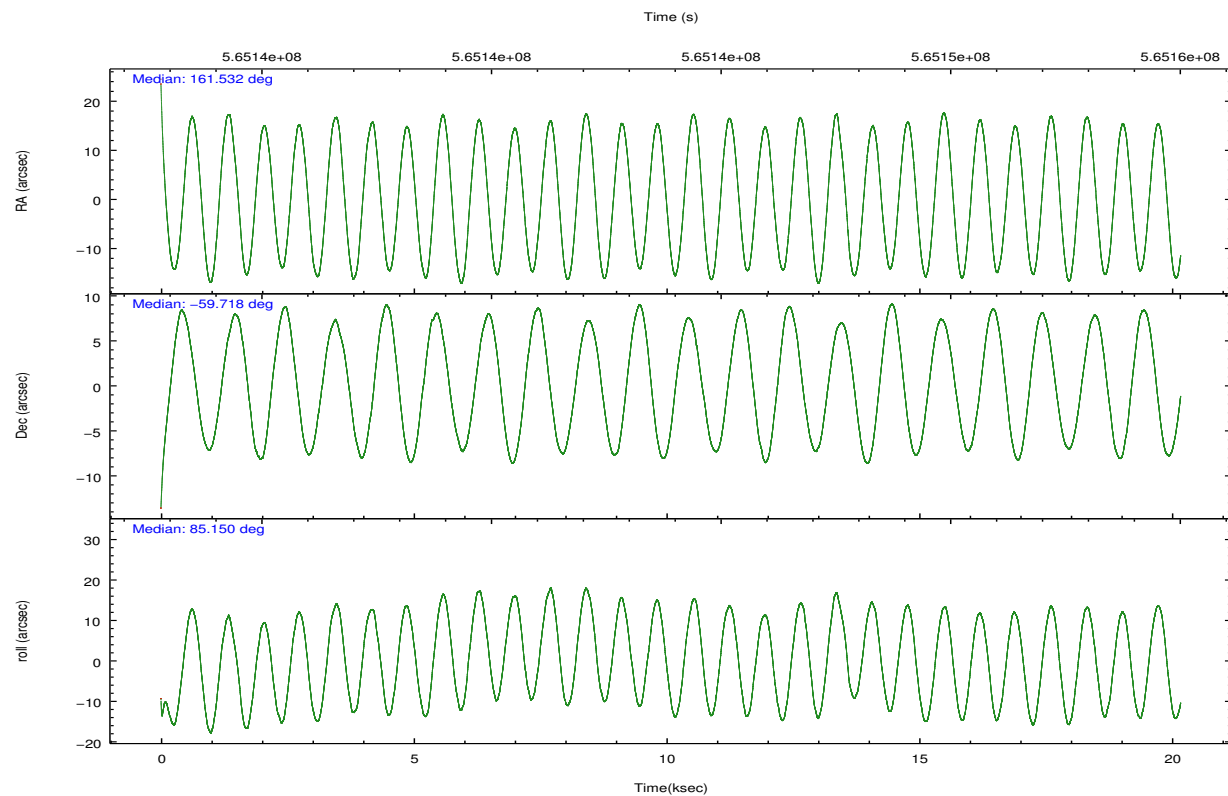
	ccd 2	ccd 3	ccd 5	ccd 6	ccd 7
grade 0 events	7988	6067	8154	13036	9328
	7%	5%	5%	11%	6%
grade 1 events	79	66	658	86	180
	0%	0%	0%	0%	0%
grade 2 events	2986	2605	26208	3128	16198
	2%	2%	16%	2%	12%
grade 3 events	1184	1209	2724	1215	6184
	1%	1%	1%	1%	4%
grade 4 events	1214	1234	2654	1285	6125
	1%	1%	1%	1%	4%
grade 5 events	3571	4383	11112	4451	12301
	3%	4%	6%	3%	9%
grade 6 events	2087	2172	43232	2739	32251
	1%	2%	26%	2%	23%
grade 7 events	93376	83635	66213	90943	52023
	83%	82%	41%	77%	38%

2.2 Compared Parameters

Parameter	Planned	Actual	Parameter	Planned	Actual
Instrument	ACIS	ACIS	Obspar format version number	7	7
Detector	ACIS-23567	ACIS-23567	Obspar file type	PREDICTED	ACTUAL
Grating	NONE	NONE	Obspar update status	NONE	UPDATED
Data mode	VFAINT	VFAINT	CCD I0 on	N	N
Observation mode	POINTING	POINTING	CCD I1 on	N	N
[deg] Pointing RA	161.555734	161.531909286945	CCD I2 on	O2	Y
[deg] Pointing Dec	-59.743021	-59.71836553470011	CCD I3 on	O3	Y
[deg] Pointing Roll	85.017083	85.15312114610667	CCD S0 on	N	N
[mm] SIM focus pos	-0.684267	-0.6828225247311905	CCD S1 on	O1	Y
[mm] SIM defocus	0	0.001444936568705701	CCD S2 on	O4	Y
[mm] SIM translation stage pos	-190.132523	-190.1425803651734	CCD S3 on	Y	Y
[mm] SIM translation stage offset	0	0.01005778216563158	CCD S4 on	N	N
[s] Observation start time (MET)	565133984.184000	565132991.45268	CCD S5 on	N	N
Observation start date	2015-11-28T21:38:36	2015-11-28T21:23:11	Number of optional ACIS chips dropped	0	0
[s] Observation end time (MET)	565153984.184000	565155021.26643	On-chip summing requested	N	N
Observation end date	2015-11-29T03:11:56	2015-11-29T03:30:21	Subarray requested	NONE	NONE
Read mode	TIMED	TIMED	Alternating exposures requested	N	N
			[s] Primary exposure time	0.000000	3.1

2.3 Aspect



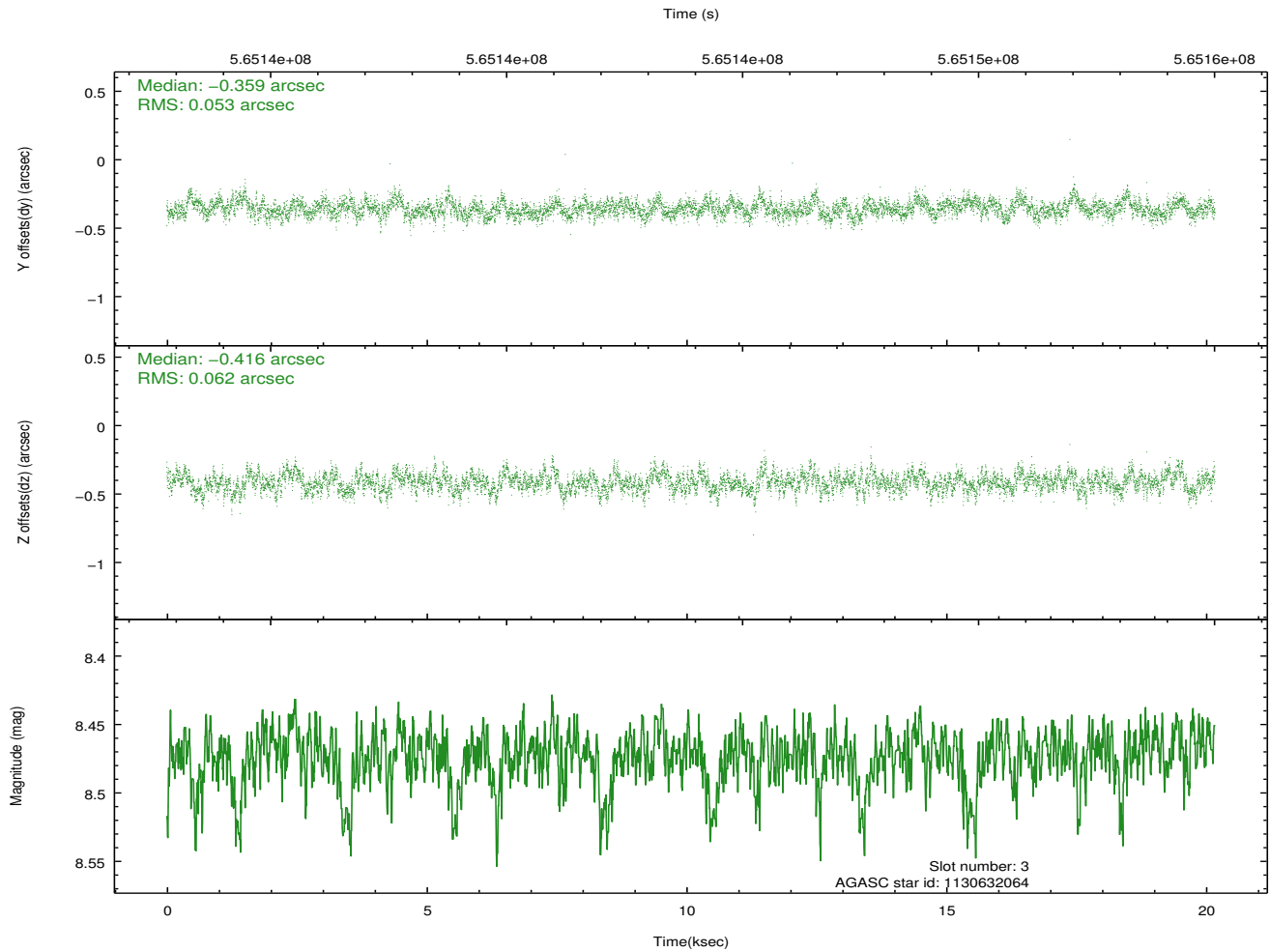
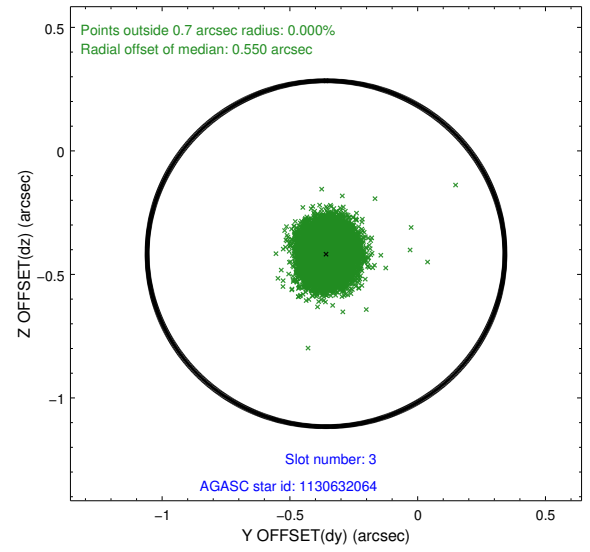
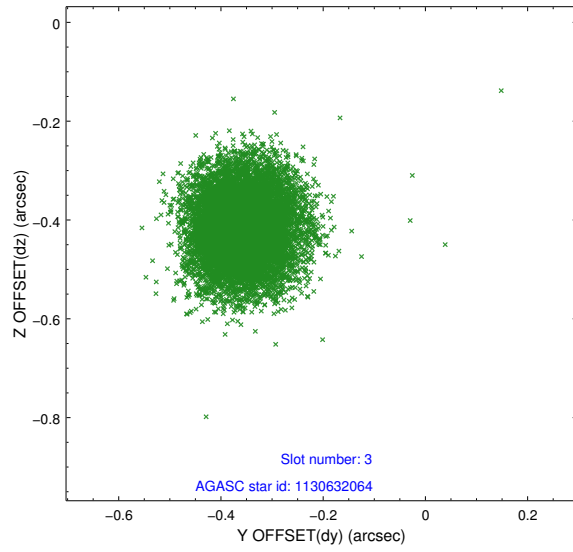


Slot Statistics

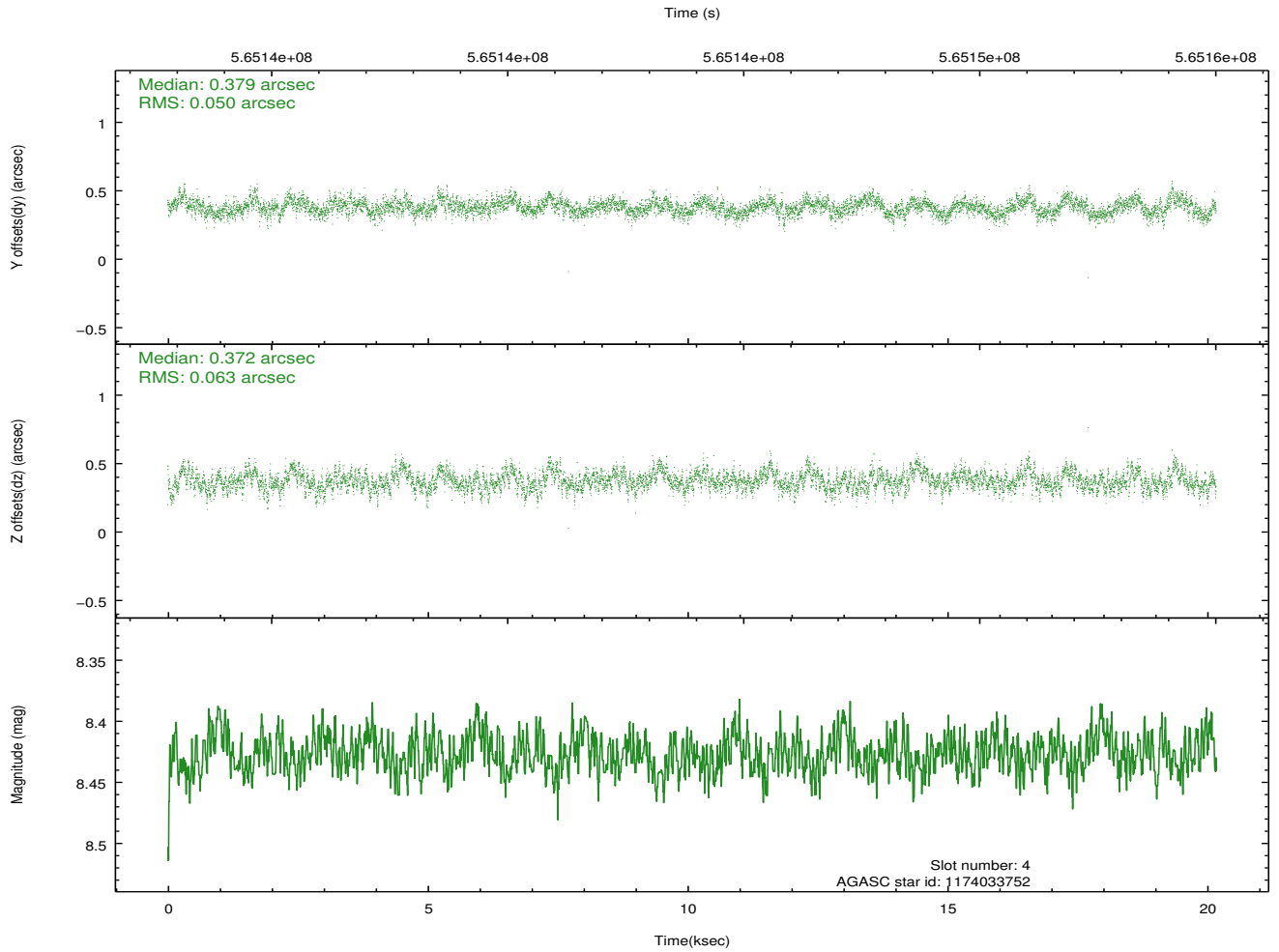
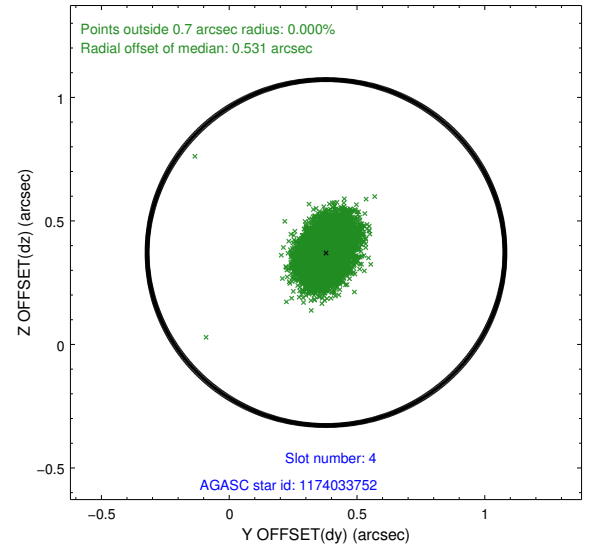
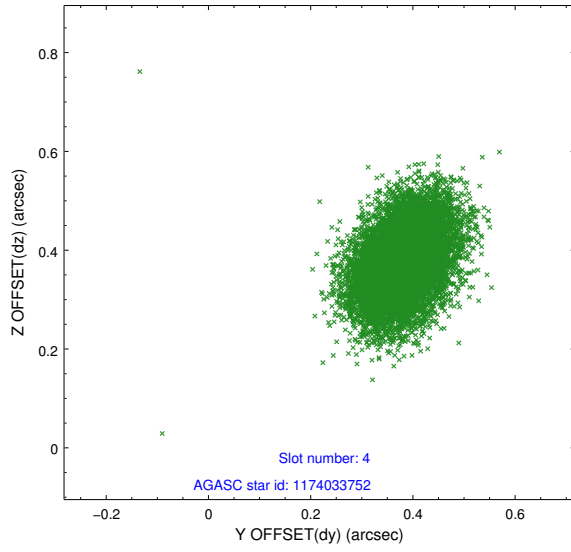
slot	status	used	id	mag	n_pts	med_dy	med_dz	dr1	dr2	ra	dec	mean_y	mean_z
0	FID		ACIS-S-1	7.21	4920	0.259	-0.061	0.021	0.027	0.000000	0.000000	926.54	-1736.93
1	FID		ACIS-S-2	7.12	4921	-0.148	-0.052	0.030	0.061	0.000000	0.000000	-769.67	-1741.74
2	FID		ACIS-S-5	7.24	4920	-0.133	0.124	0.020	0.035	0.000000	0.000000	-1823.16	160.52
3	GUIDE	used	1130632064	8.47	9835	-0.359	-0.416	0.086	0.142	160.452382	-59.130948	2001.25	2220.13
4	GUIDE	used	1174033752	8.43	9835	0.379	0.372	0.085	0.142	162.418977	-60.164599	-1386.65	-1672.22
5	GUIDE	used	1130644032	8.84	9829	-0.156	-0.368	0.134	0.217	160.377001	-59.073783	2191.51	2380.02
6	GUIDE	used	1130642000	7.95	9835	0.163	0.358	0.082	0.137	162.836255	-59.743891	177.21	-2315.23
7	GUIDE	used	1174012960	7.14	9836	-0.017	0.055	0.064	0.109	160.855674	-60.332270	-2227.89	1057.83

2.4 Star Slots

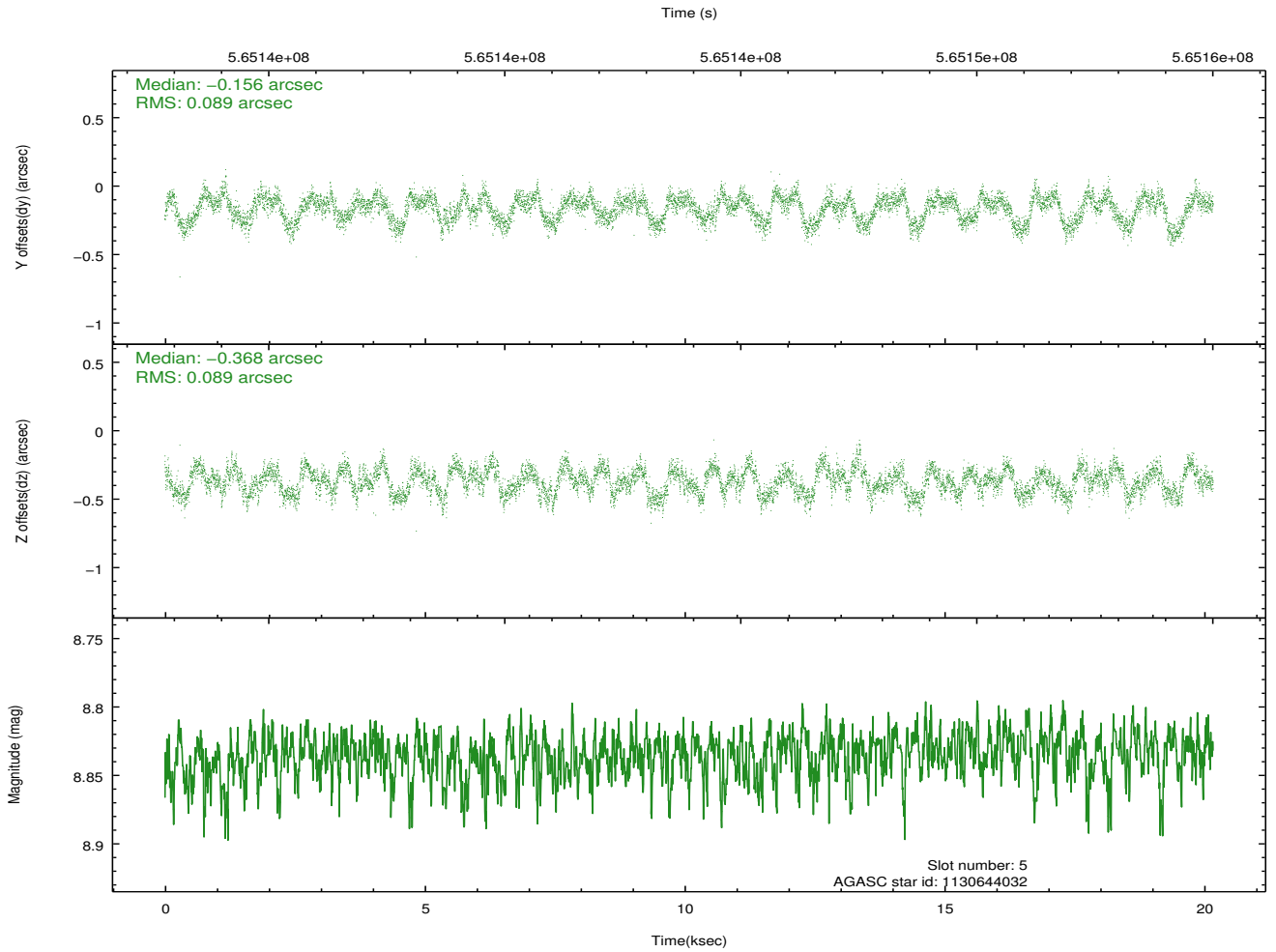
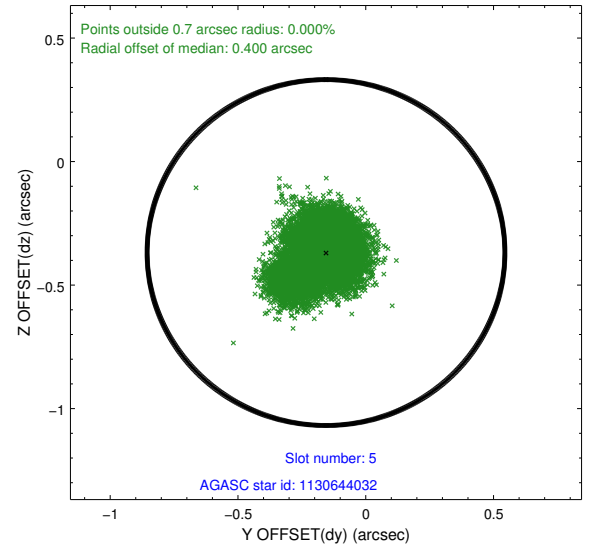
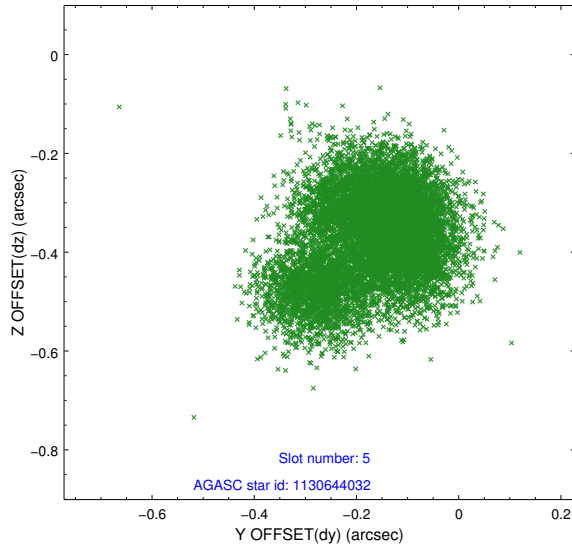
2.4.1 Slot 3



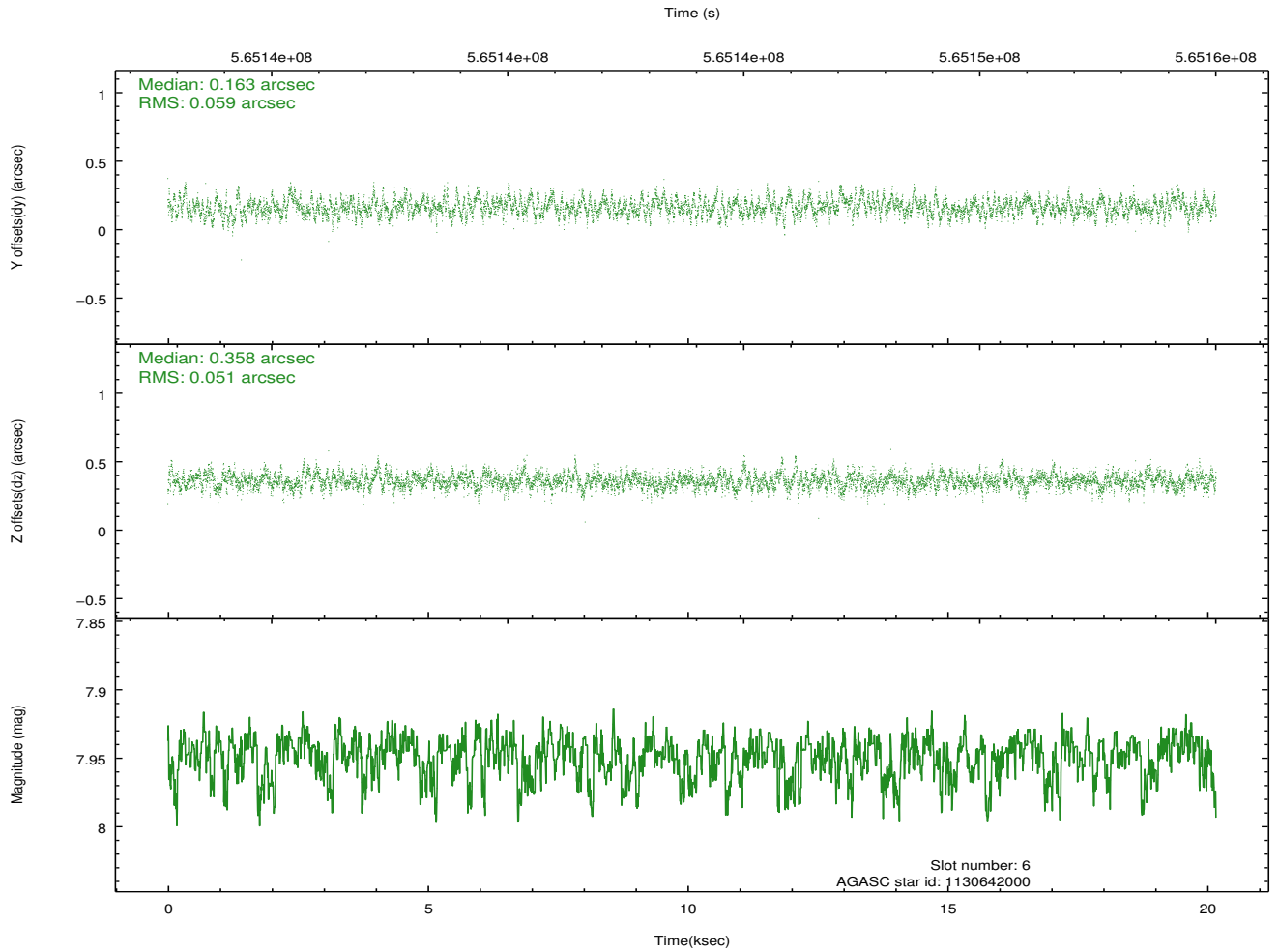
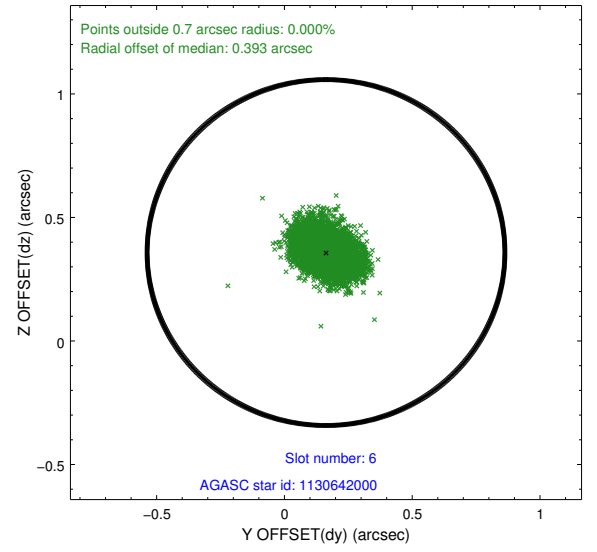
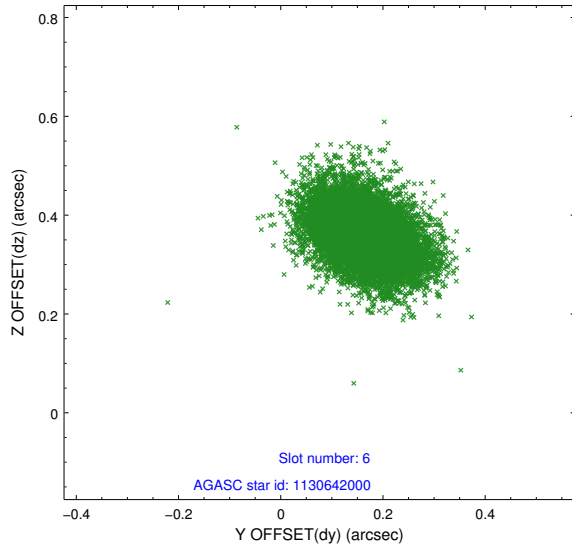
2.4.2 Slot 4



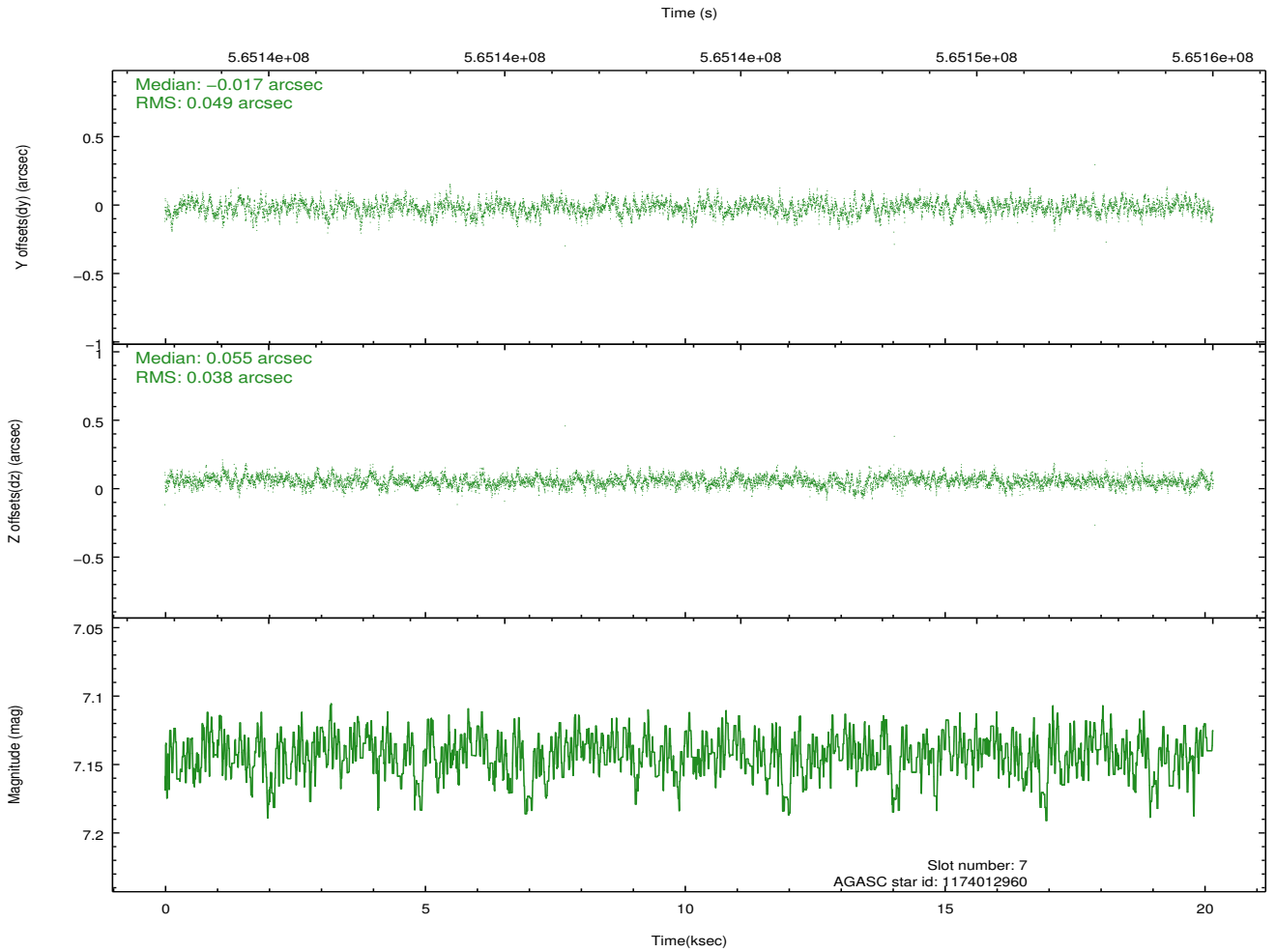
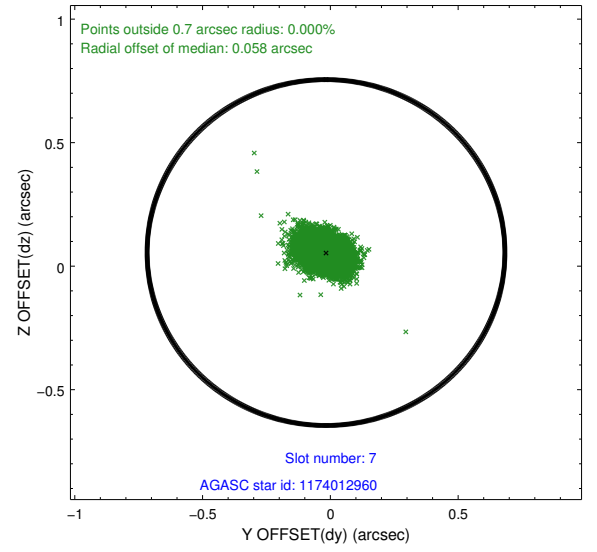
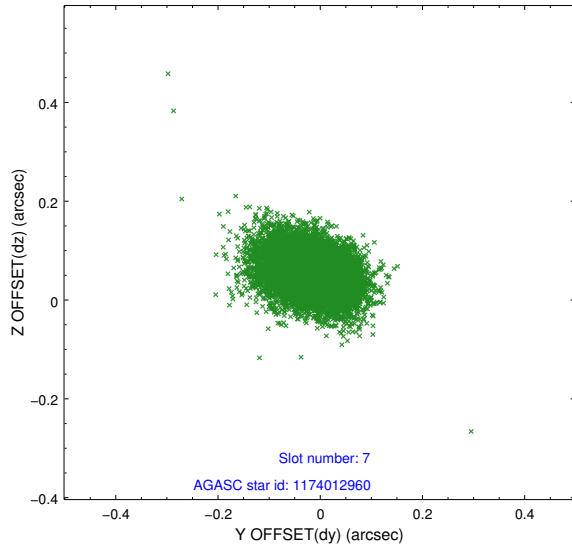
2.4.3 Slot 5



2.4.4 Slot 6

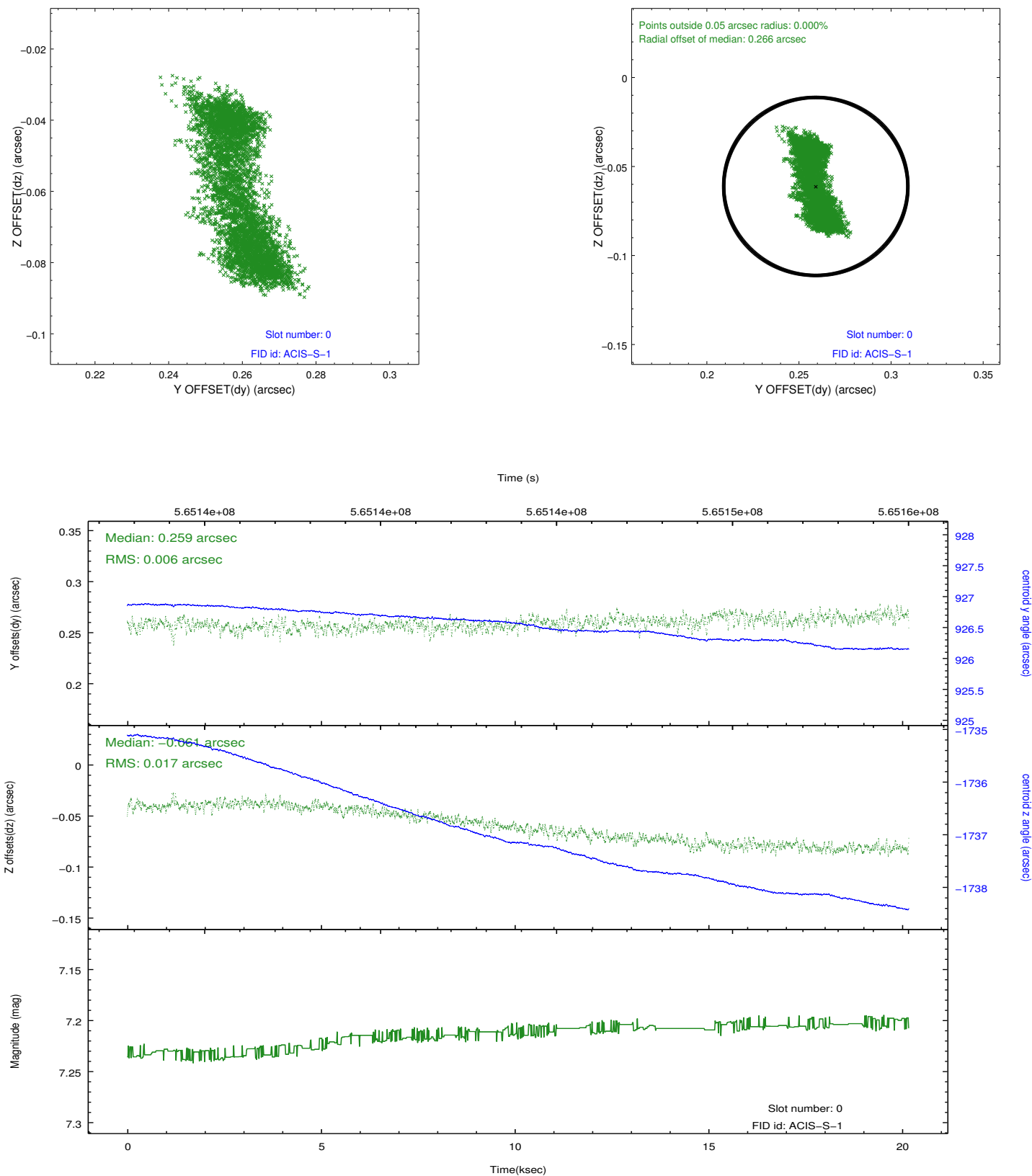


2.4.5 Slot 7

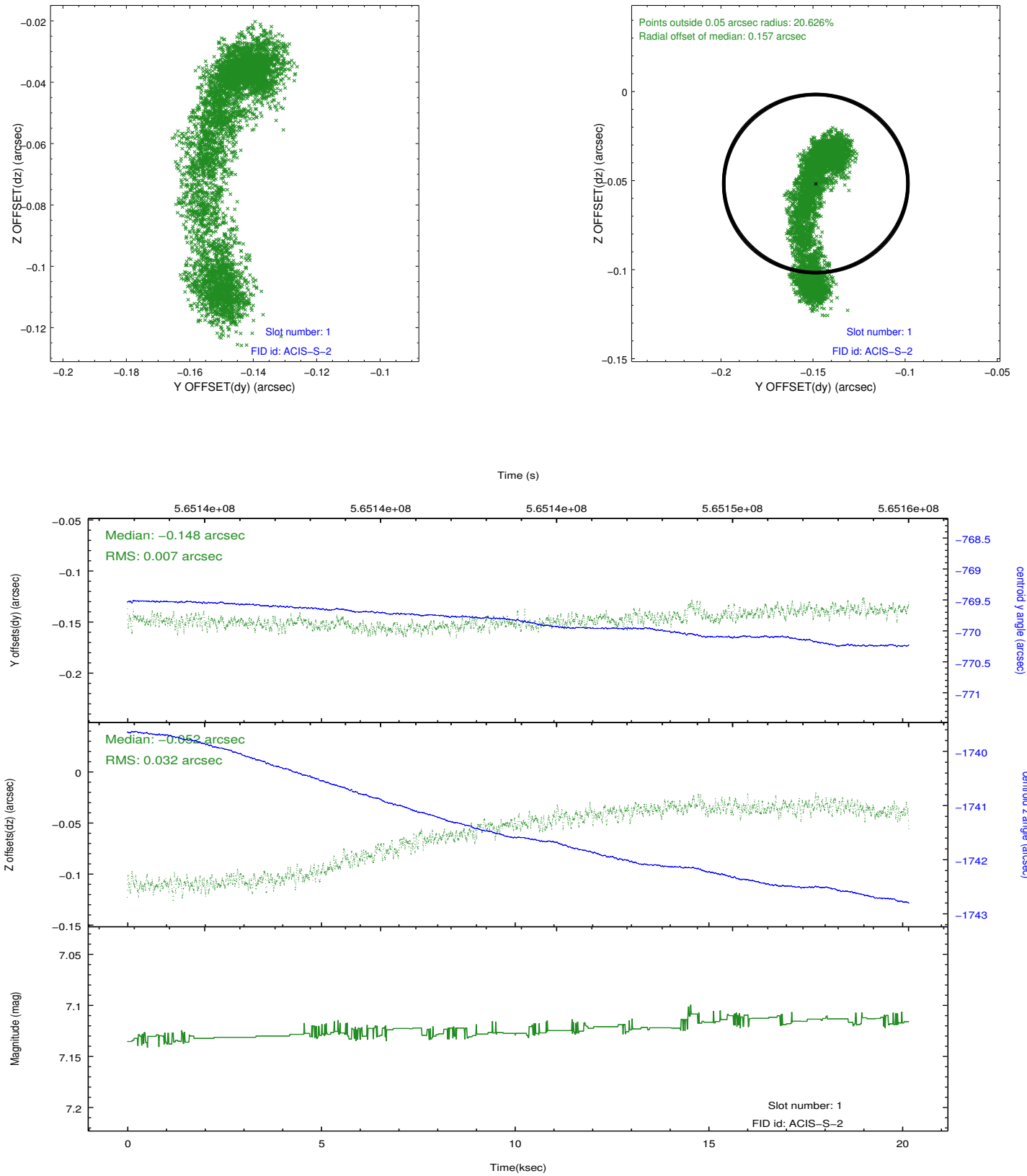


2.5 FID Slots

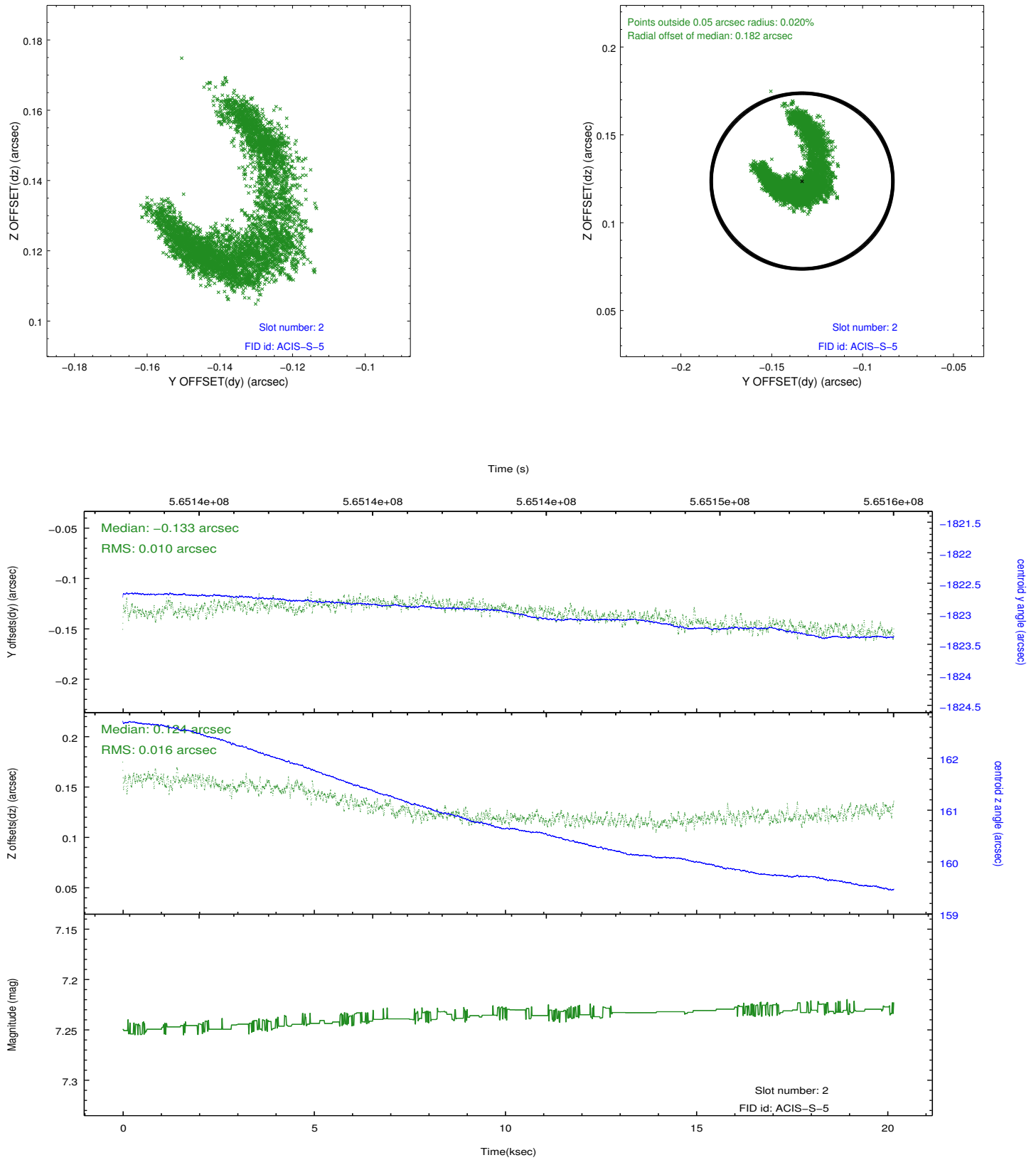
2.5.1 Slot 0



2.5.2 Slot 1



2.5.3 Slot 2



A Summary

A.1 Status

V&V Scientist	David Huenemoerder
V&V Date (YYYY-MM-DD)	2015.11.29
V&V Edition	1
V&V Disposition and Status	OK
V&V Charge Time	20.056749765873

A.2 Comments