

V&V Reference Report

L2 ASCDS Version : 10.3.3

Observation 17631 - L2 Version 1
Chandra X-Ray Center

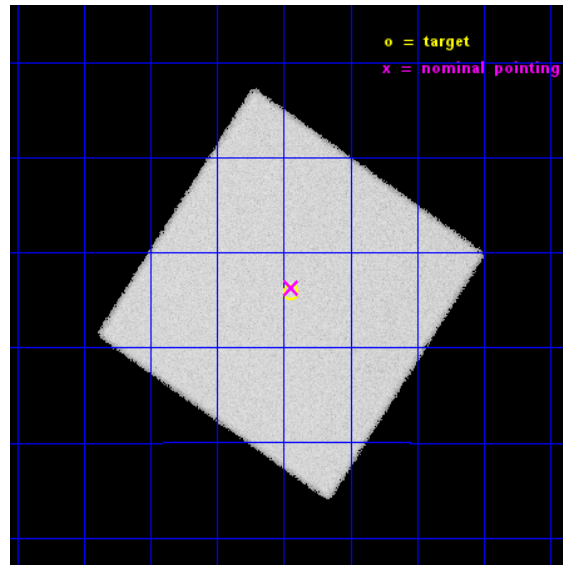
L2 Processing Date : Feb 18 2015

Contents

1	Front	2
2	OBI	3
2.1	OBI	3
2.1.1	Images	3
2.1.2	Parameters	4
2.1.3	Events	4
2.2	Compared Parameters	5
2.3	Aspect	6
2.4	Star Slots	9
2.4.1	Slot 3	9
2.4.2	Slot 4	10
2.4.3	Slot 5	11
2.4.4	Slot 6	12
2.4.5	Slot 7	13
2.5	FID Slots	14
2.5.1	Slot 0	14
2.5.2	Slot 1	15
2.5.3	Slot 2	16
A	Summary	17
A.1	Status	17
A.2	Comments	17

1 Front

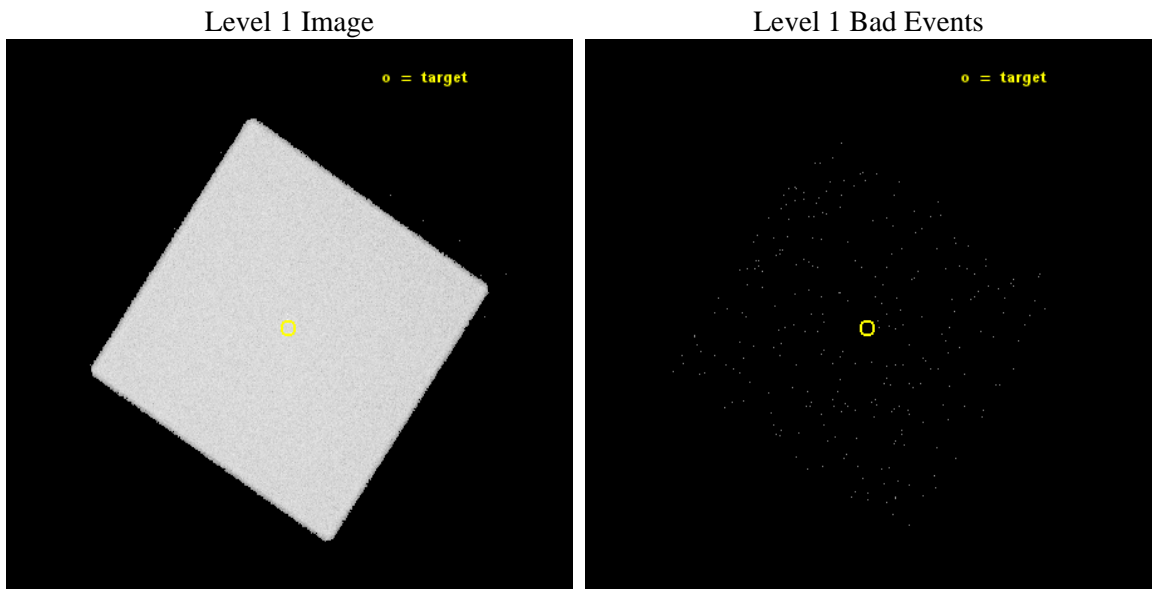
seq_num	401689	Sequence number
obs_id	17631	Observation id
title	X-ray follow-up of a fast radio burst	Proposal title
observer	Ms Emily Petroff	Principal investigator
object	1817-0454	Source name
ra_targ	274.3625	Observer's specified target RA [deg]
dec_targ	-4.90425	Observer's specified target Dec [deg]
ra_nom	274.36085512578	Nominal RA [deg]
dec_nom	-4.8948971080595	Nominal Dec [deg]
roll_nom	78.92000766823	Nominal Roll [deg]
revision	1	Processing version of data
ontime	10153.650567293	[s]
livetime	10010.207921517	Ontime multiplied by DTCOR
l2events	689404	Number of level 2 events



2 OBI

2.1 OBI

2.1.1 Images



2.1.2 Parameters

obi_num	0	Obi number	sched_exp_time	10000.000000	[s] Scheduled observation exposure time
ascdsver	10.3.3	Processing system revision	ontime	10153.650567293	[s]
caldsver	4.6.6	 	l1events	993545	Number of level 1 events
date	2015-02-18T15:17:50	Date and time of file creation			
revision	1	Processing version of data			

2.1.3 Events

Level 1 Events

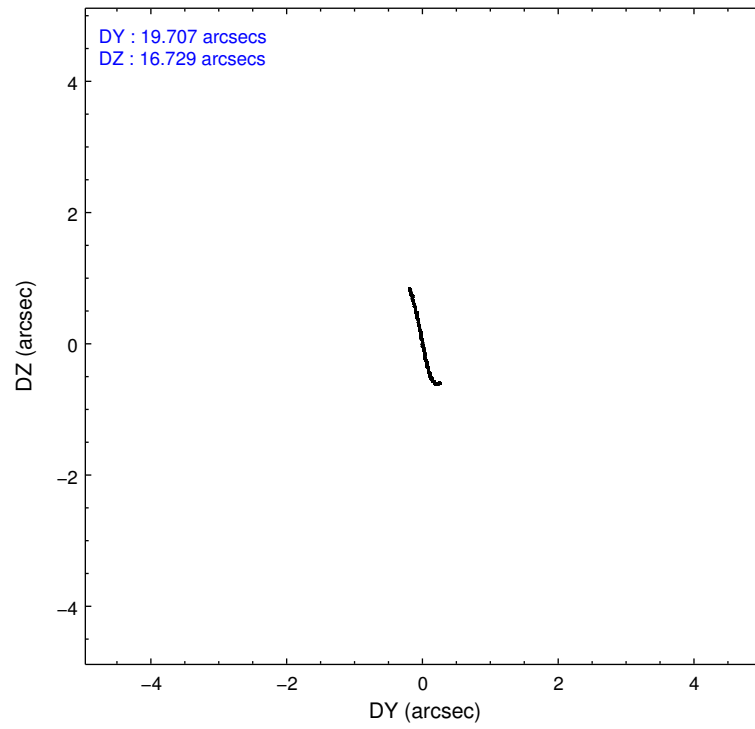
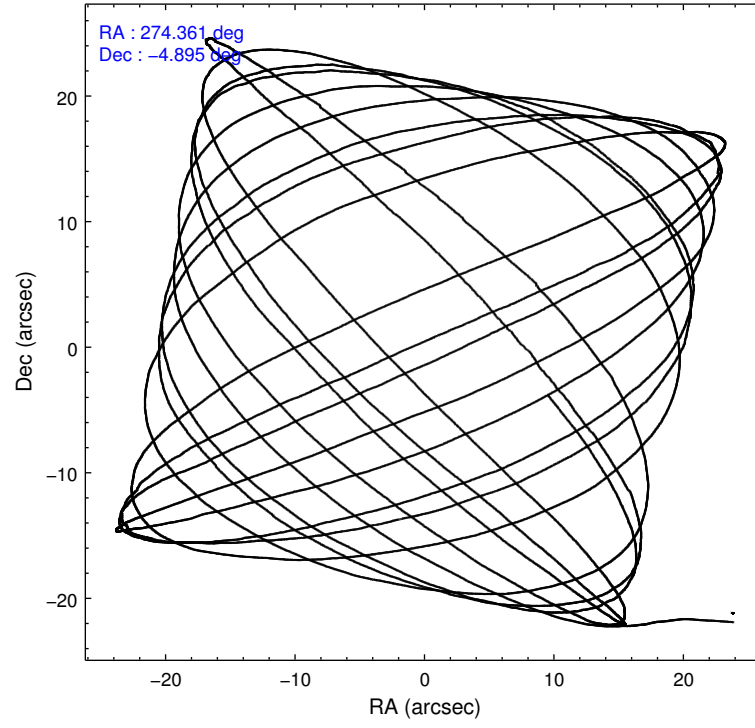
	segment 0
level 1 events	993545
rejected events	77711
rejected %	7%

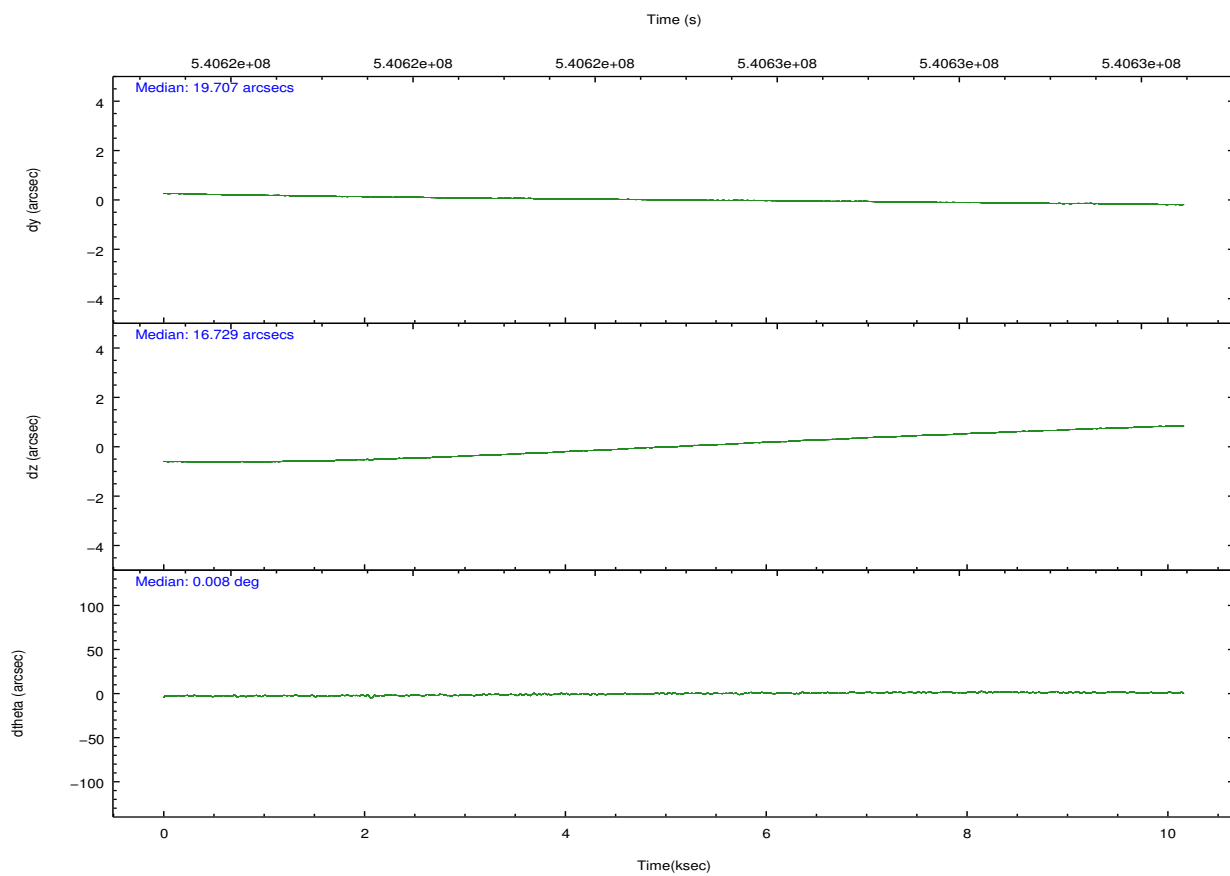
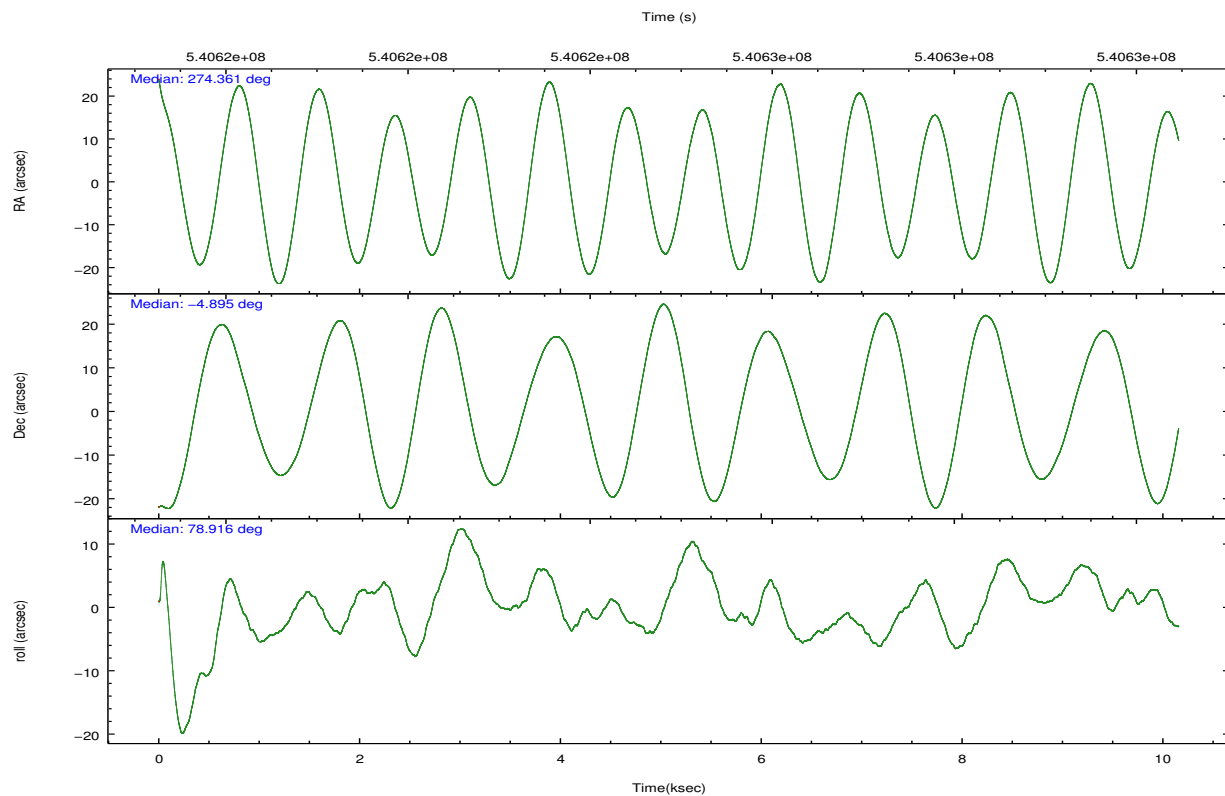
2.2 Compared Parameters

Parameter	Planned	Actual
Instrument	HRC	HRC
Detector	HRC-I	HRC-I
Grating	NONE	NONE
Data mode	OBSERVING	OBSERVING
Observation mode	POINTING	POINTING
[deg] Pointing RA	274.370268	274.3608551257798
[deg] Pointing Dec	-4.920348	-4.894897108059471
[deg] Pointing Roll	79.016303	78.9200076682297
[mm] SIM focus pos	-1.040293	-1.038866356238299
[mm] SIM defocus	0	0.001426264420575141
[mm] SIM translation stage pos	126.985494	126.9829799899862
[mm] SIM translation stage offset	0	0.002508901615314585
[s] Observation start time (MET)	540619933.184000	540618969.35934
Observation start date	2015-02-18T04:11:06	2015-02-18T03:56:09
[s] Observation end time (MET)	540629933.184000	540630933.16001
Observation end date	2015-02-18T06:57:46	2015-02-18T07:15:33

Parameter	Planned	Actual
Obspar format version number	7	7
Obspar file type	PREDICTED	ACTUAL
Obspar update status	NONE	UPDATED

2.3 Aspect



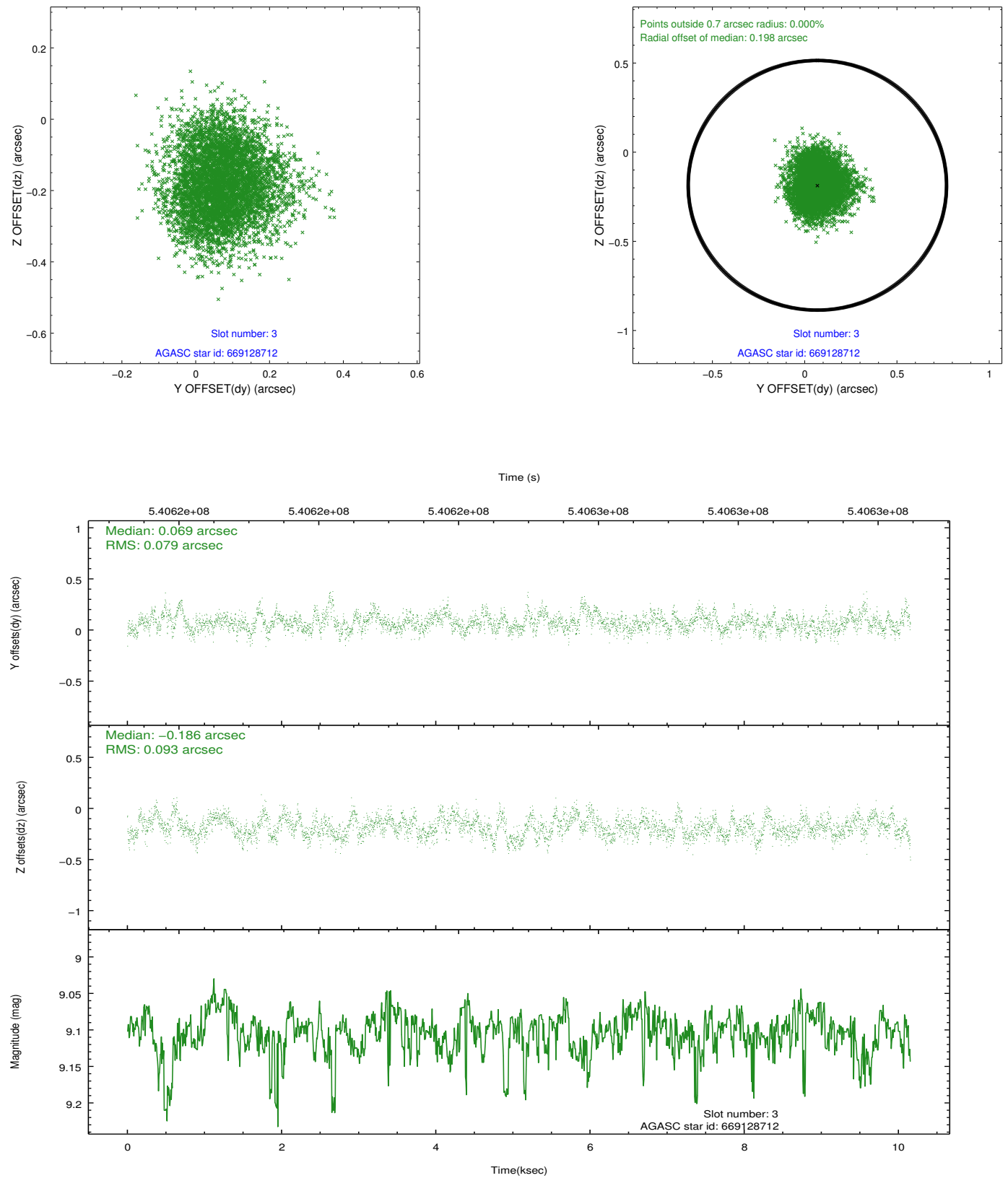


Slot Statistics

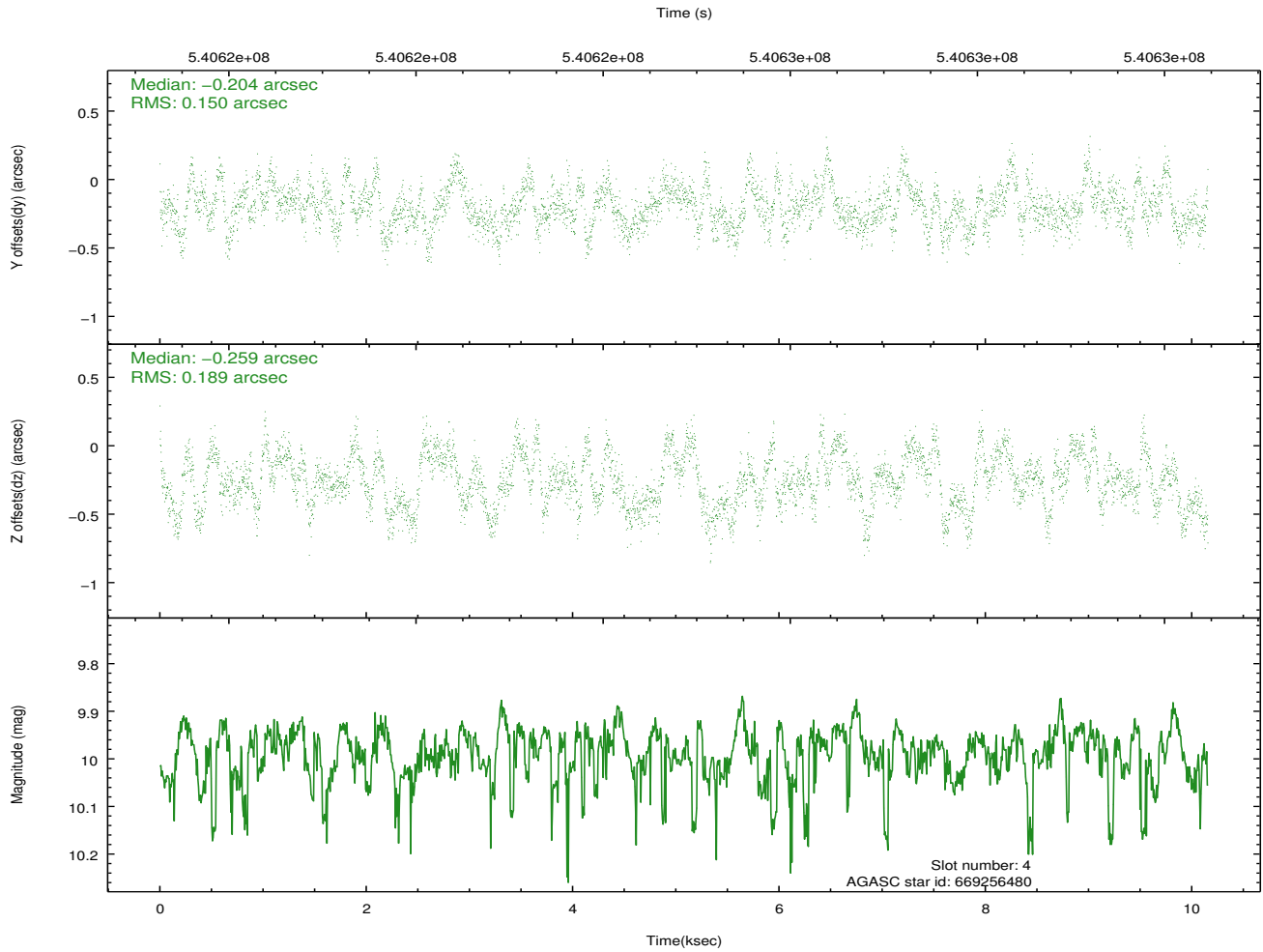
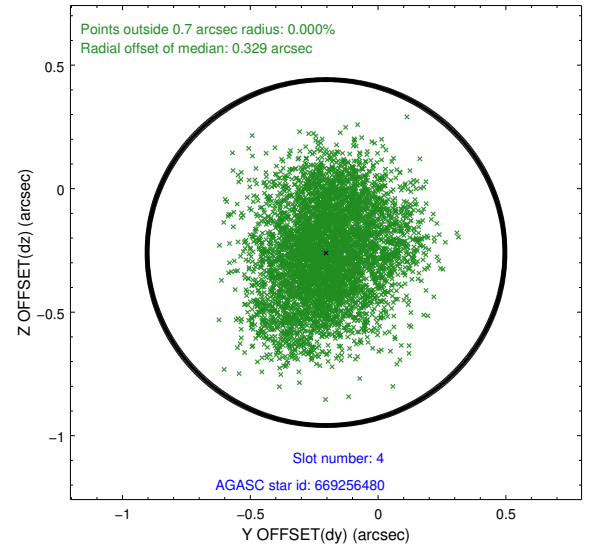
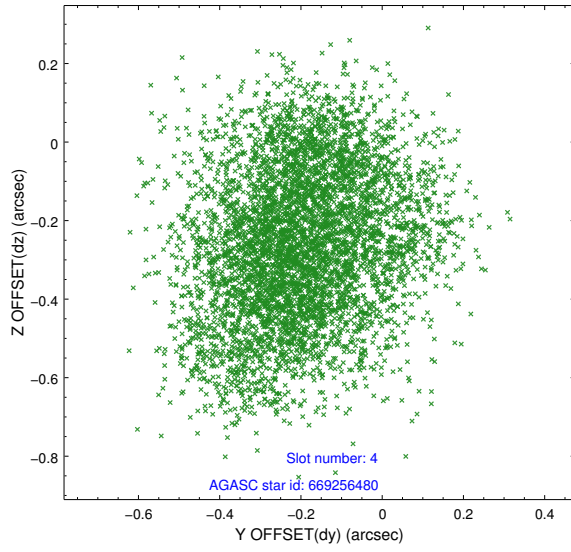
slot	status	used	id	mag	n_pts	med_dy	med_dz	dr1	dr2	ra	dec	mean_y	mean_z
0	FID		HRC-I-1	6.99	2478	-0.127	0.031	0.017	0.028	0.000000	0.000000	-775.75	-1304.88
1	FID		HRC-I-2	7.03	2478	0.292	-0.143	0.025	0.043	0.000000	0.000000	836.98	-1307.11
2	FID		HRC-I-3	7.08	2478	-0.049	0.022	0.019	0.033	0.000000	0.000000	-1203.86	999.15
3	GUIDE	used	669128712	9.10	4948	0.069	-0.186	0.131	0.206	273.659187	-5.214488	-1526.06	2300.89
4	GUIDE	used	669256480	9.99	4949	-0.204	-0.259	0.264	0.405	274.225442	-4.330303	1986.90	915.74
5	GUIDE	used	669256520	10.03	4953	0.480	0.459	0.273	0.428	274.669057	-5.394934	-1471.79	-1375.79
6	GUIDE	used	669257040	9.92	4949	-0.268	-0.073	0.162	0.270	274.096841	-4.463166	1428.59	1277.23
7	GUIDE	used	669257664	7.11	4954	-0.101	0.045	0.103	0.163	273.893031	-5.475182	-2286.55	1298.95

2.4 Star Slots

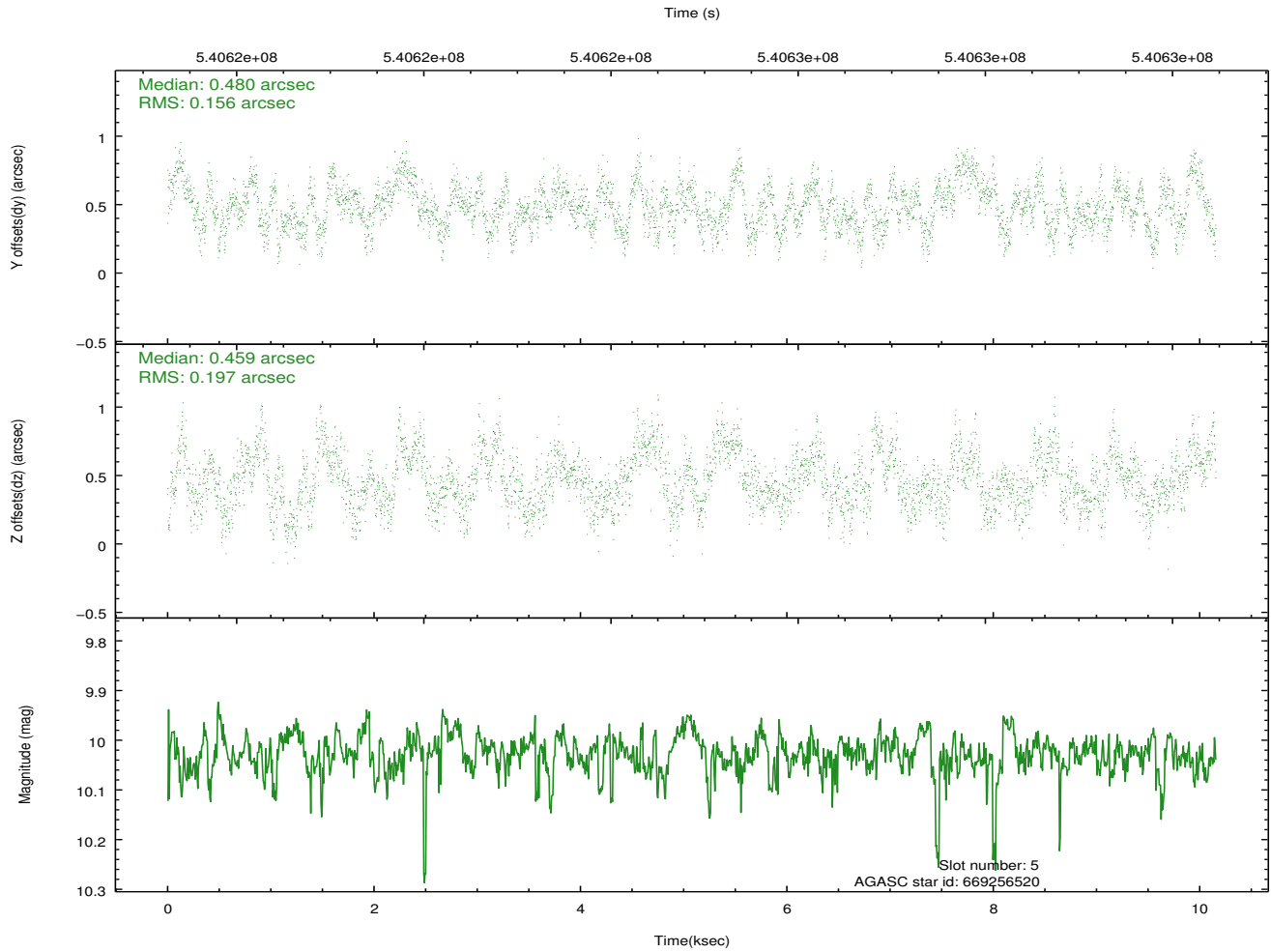
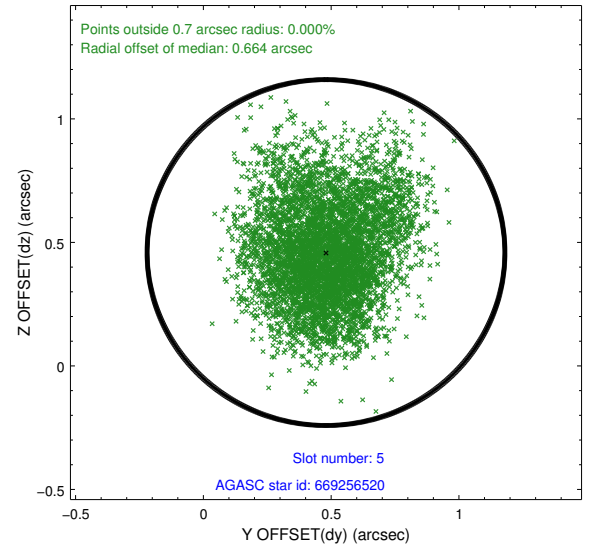
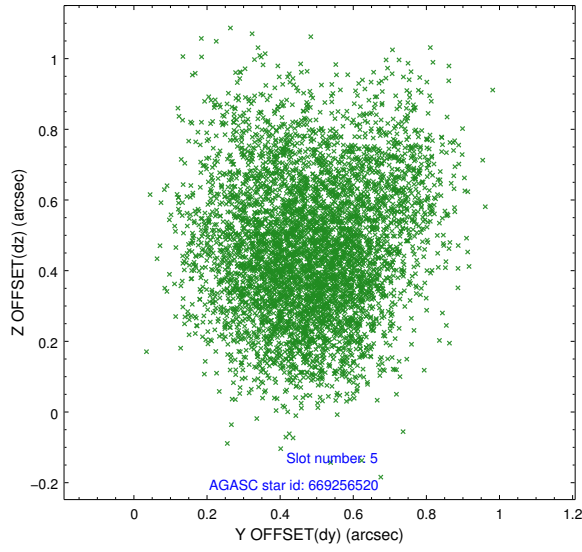
2.4.1 Slot 3



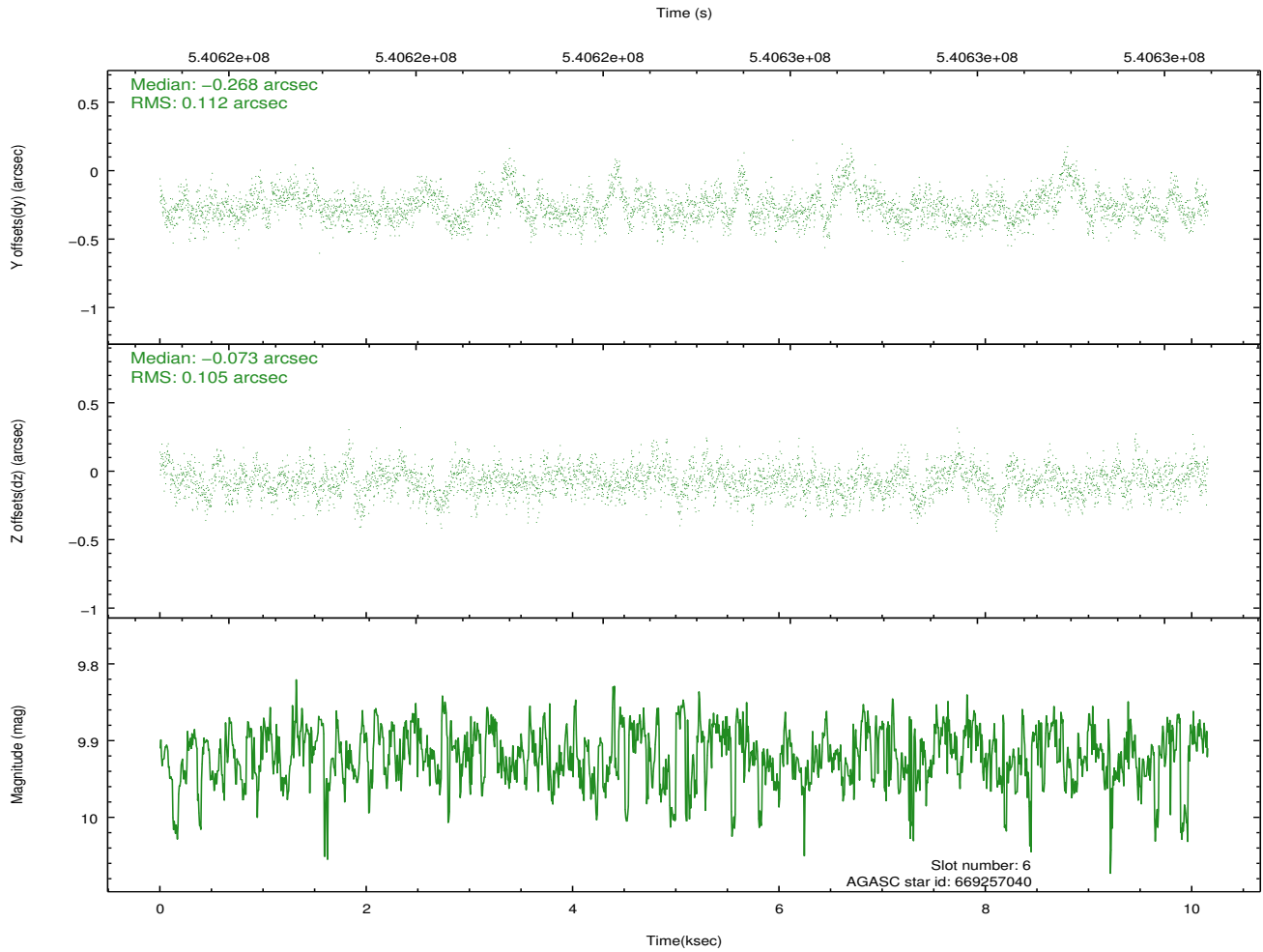
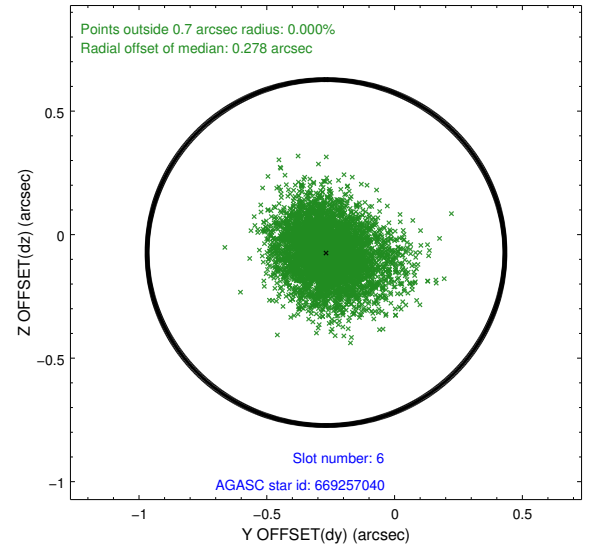
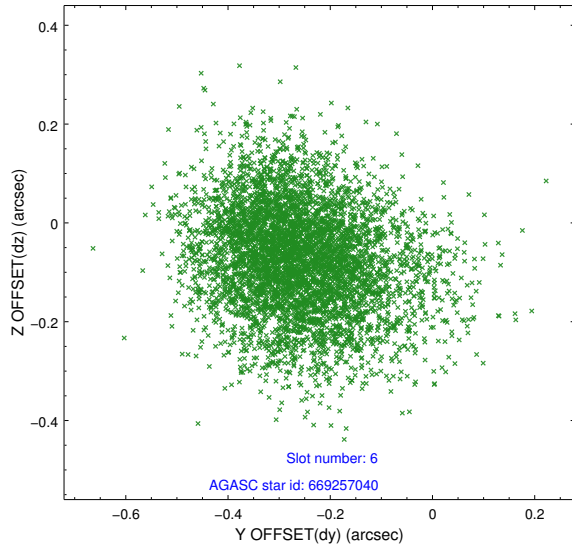
2.4.2 Slot 4



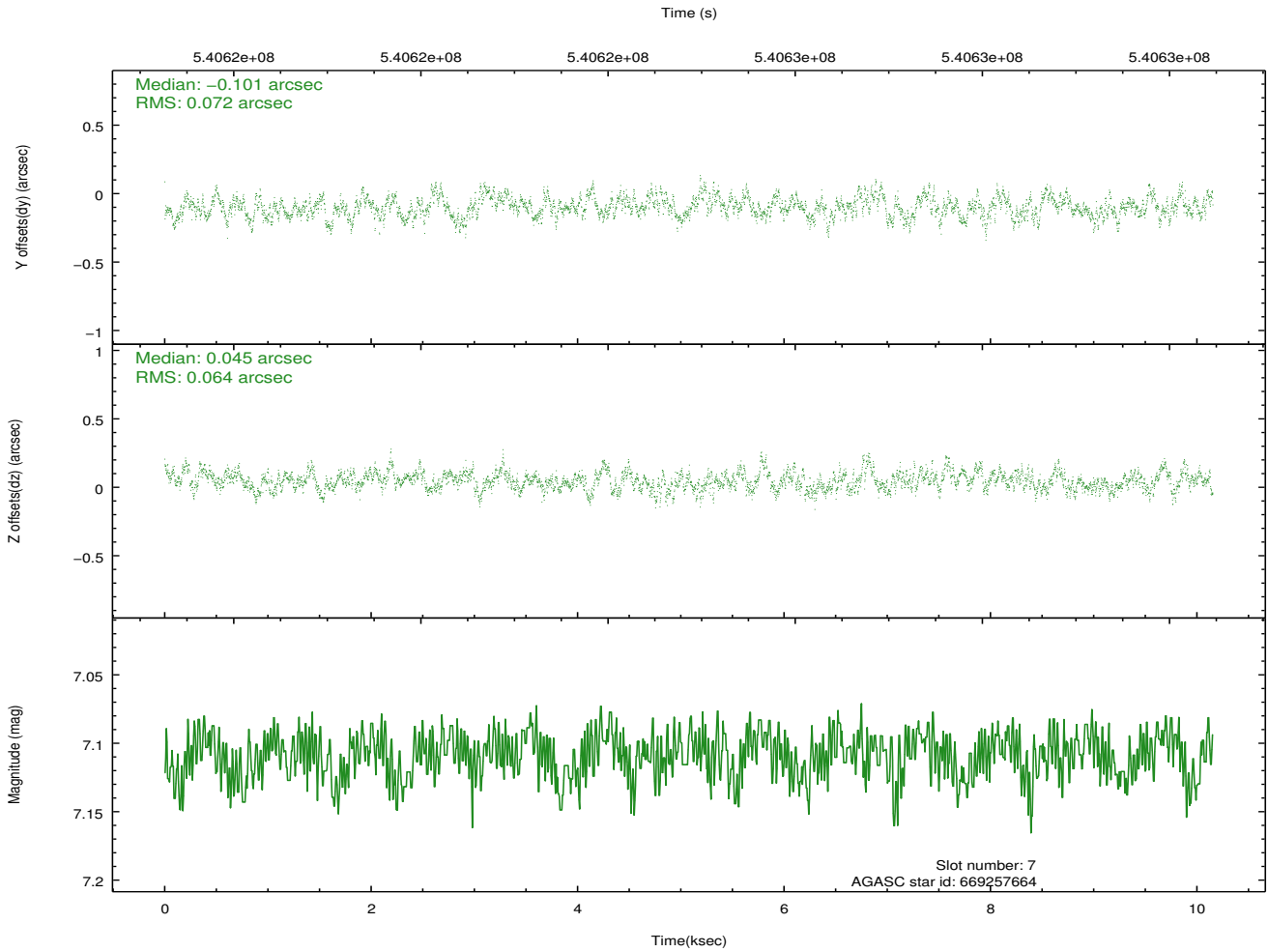
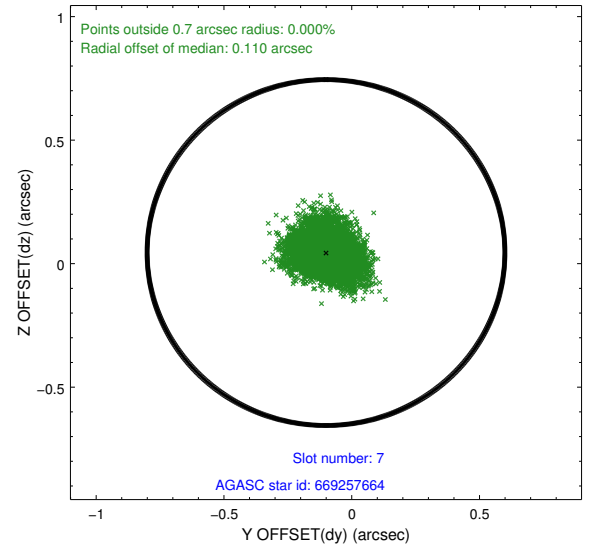
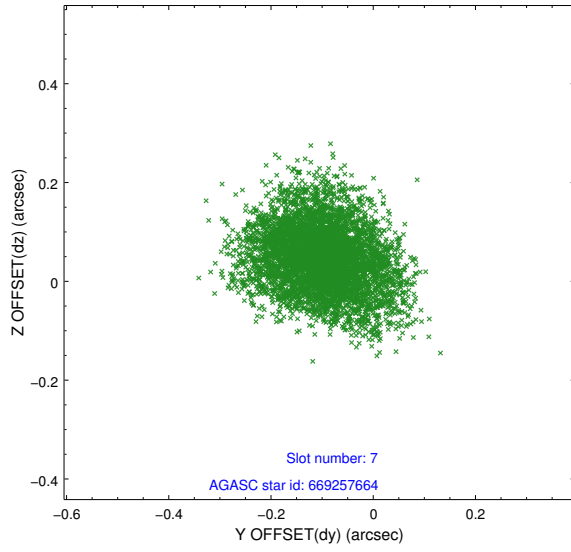
2.4.3 Slot 5



2.4.4 Slot 6

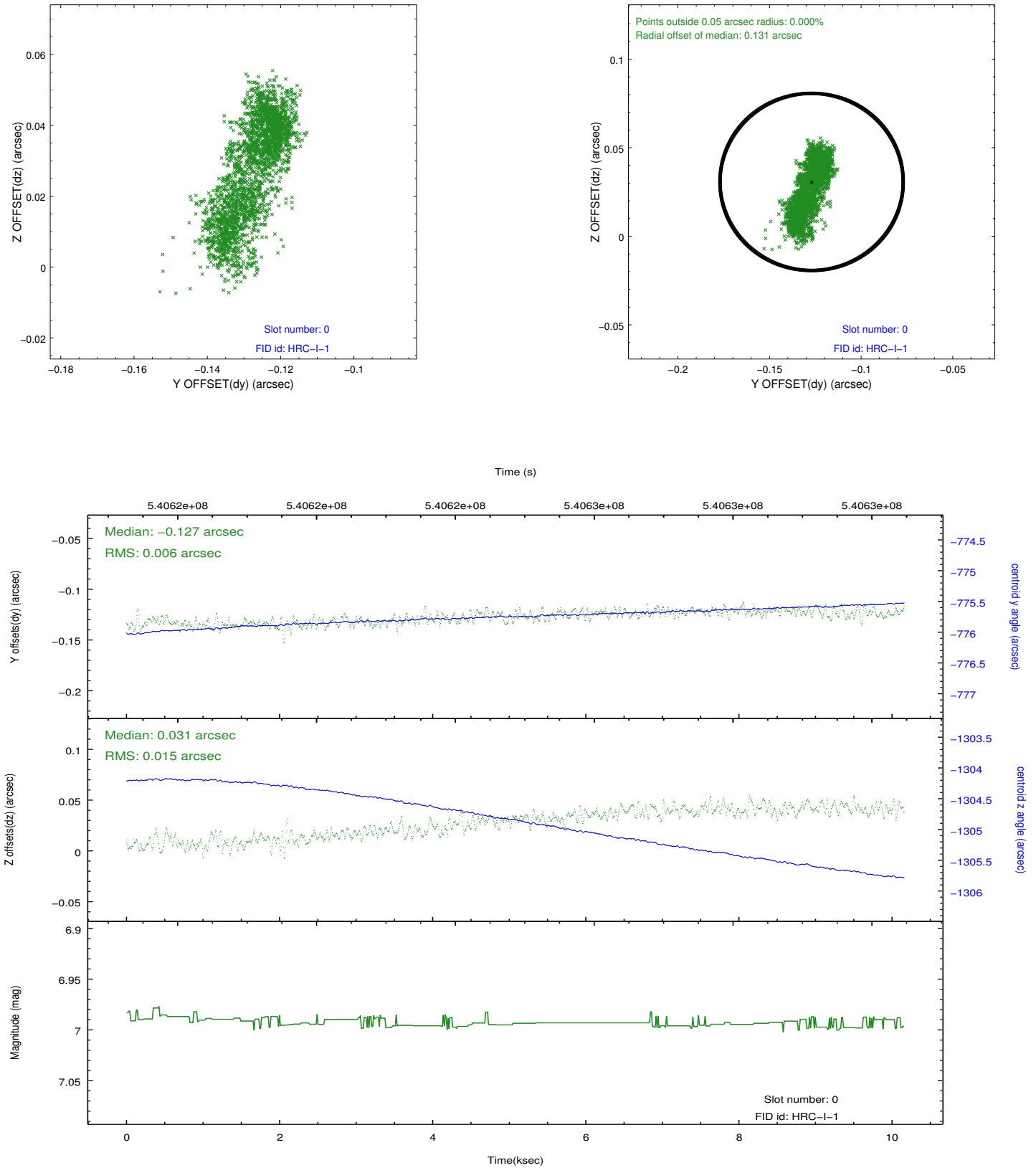


2.4.5 Slot 7

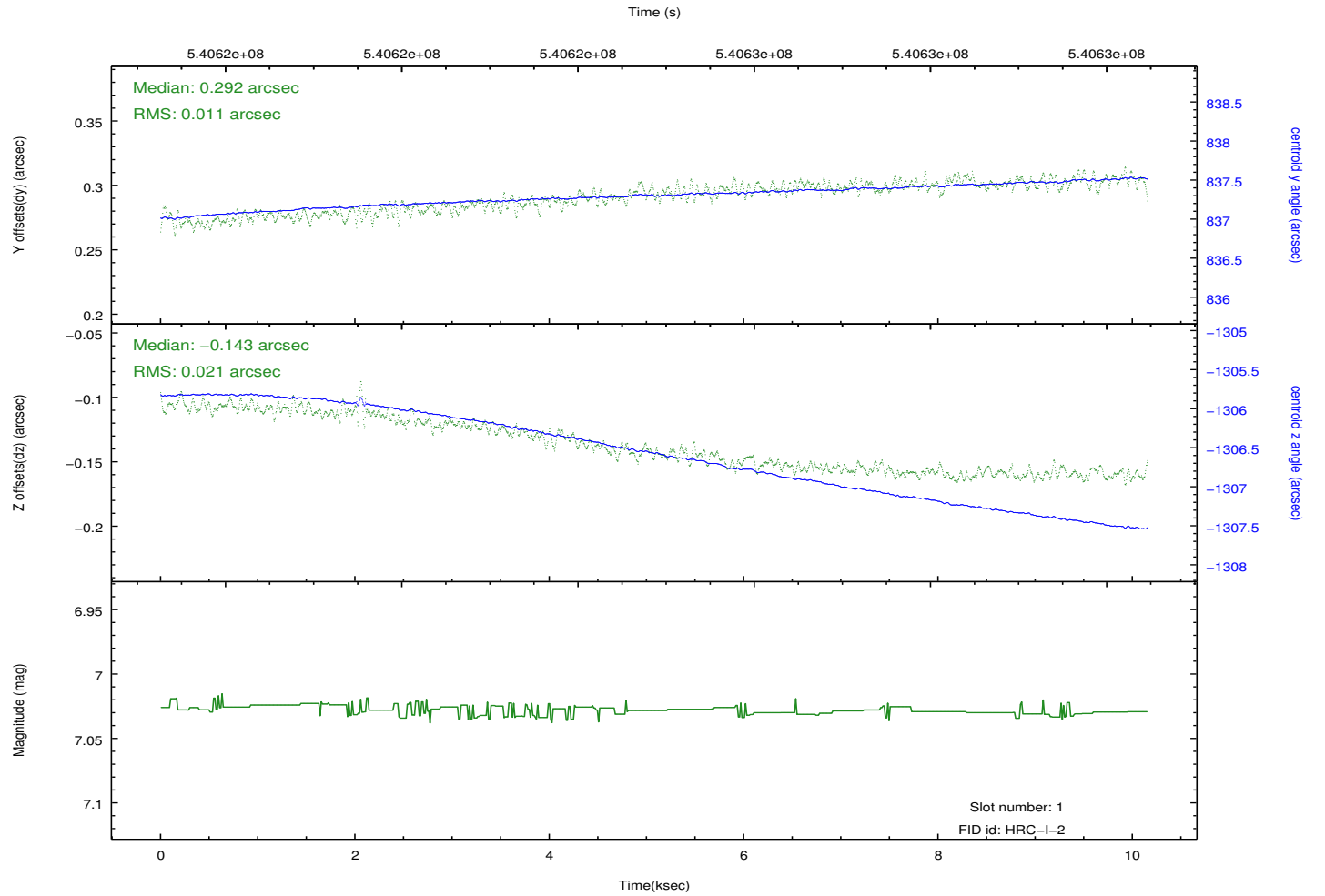
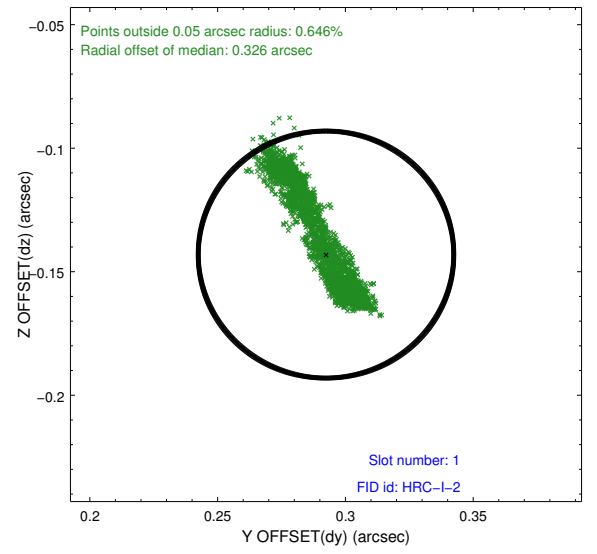
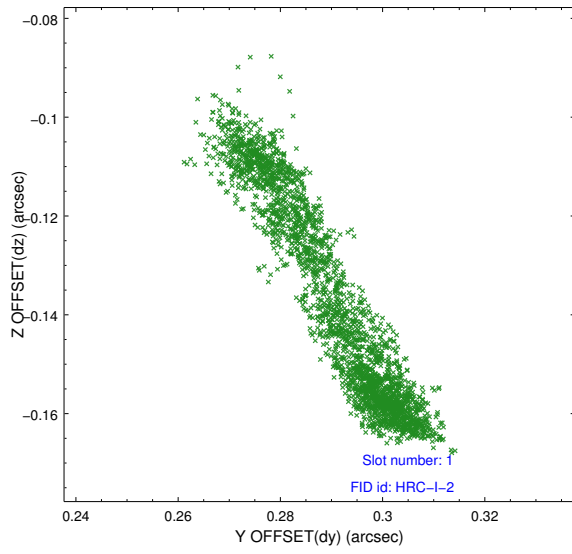


2.5 FID Slots

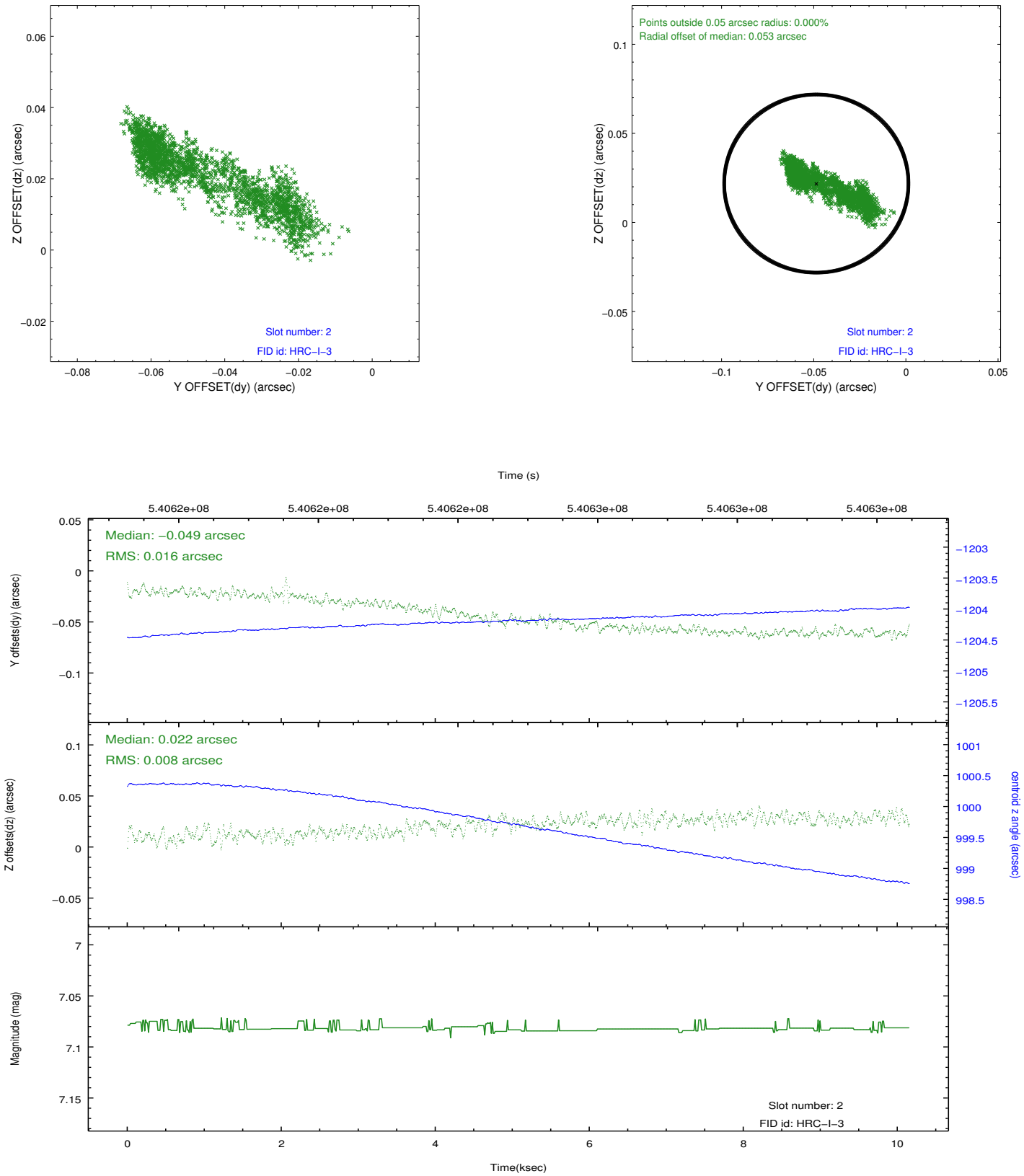
2.5.1 Slot 0



2.5.2 Slot 1



2.5.3 Slot 2



A Summary

A.1 Status

V&V Scientist	Beth Sundheim
V&V Date (YYYY-MM-DD)	2015.02.18
V&V Edition	1
V&V Disposition and Status	OK
V&V Charge Time	10.153650567293

A.2 Comments