

V&V Reference Report

L2 ASCDS Version : 10.3

Observation 16683 - L2 Version 1
Chandra X-Ray Center

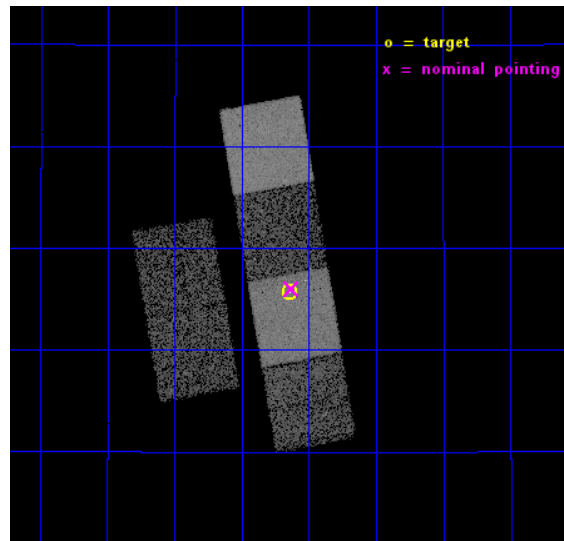
L2 Processing Date : Nov 5 2014

Contents

1	Front	2
2	OBI	3
2.1	OBI	3
2.1.1	Images	3
2.1.2	Bias	3
2.1.3	Parameters	4
2.1.4	Events	4
2.2	Compared Parameters	5
2.3	Aspect	6
2.4	Star Slots	9
2.4.1	Slot 3	9
2.4.2	Slot 4	10
2.4.3	Slot 5	11
2.4.4	Slot 6	12
2.4.5	Slot 7	13
2.5	FID Slots	14
2.5.1	Slot 0	14
2.5.2	Slot 1	15
2.5.3	Slot 2	16
A	Summary	17
A.1	Status	17
A.2	Comments	17

1 Front

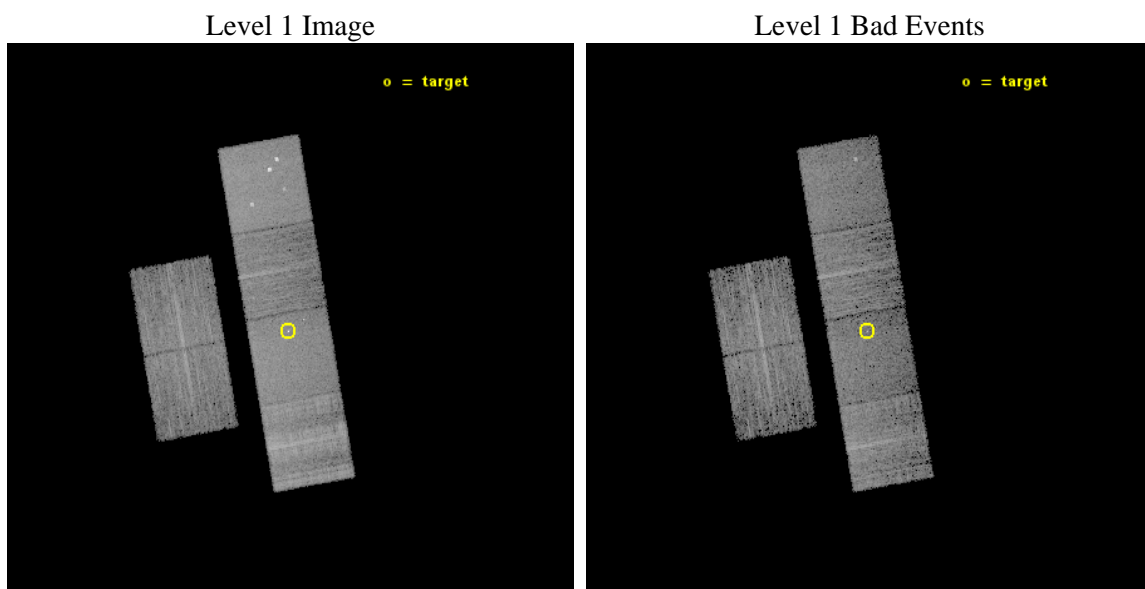
seq_num	201004	Sequence number
obs_id	16683	Observation id
title	Investigating Active Accretion, Flare Activity and a 50 Million Degree Corona in the cool AGB Star, Y Gem	Proposal title
observer	Dr. Raghvendra Sahai	Principal investigator
object	Y Gem	Source name
dtcycle	0	
cycle	P	events from which exps? Prim/Second/Both
ra_targ	115.285417	Observer's specified target RA [deg]
dec_targ	20.428972	Observer's specified target Dec [deg]
ra_nom	115.2825479688	Nominal RA [deg]
dec_nom	20.433731428537	Nominal Dec [deg]
roll_nom	80.034700378258	Nominal Roll [deg]
revision	1	Processing version of data
ontime	9964.7999629378	Sum of GTIs [s]
livetime	9838.6196657249	Livetime [s]
ontime2	9964.7999629378	Sum of GTIs [s]
ontime3	9964.7980392575	Sum of GTIs [s]
ontime5	9964.7999629378	Sum of GTIs [s]
ontime6	9961.5589526892	Sum of GTIs [s]
ontime7	9964.7999629378	Sum of GTIs [s]
ontime8	9964.7569992542	Sum of GTIs [s]
l2events	91336	Number of level 2 events



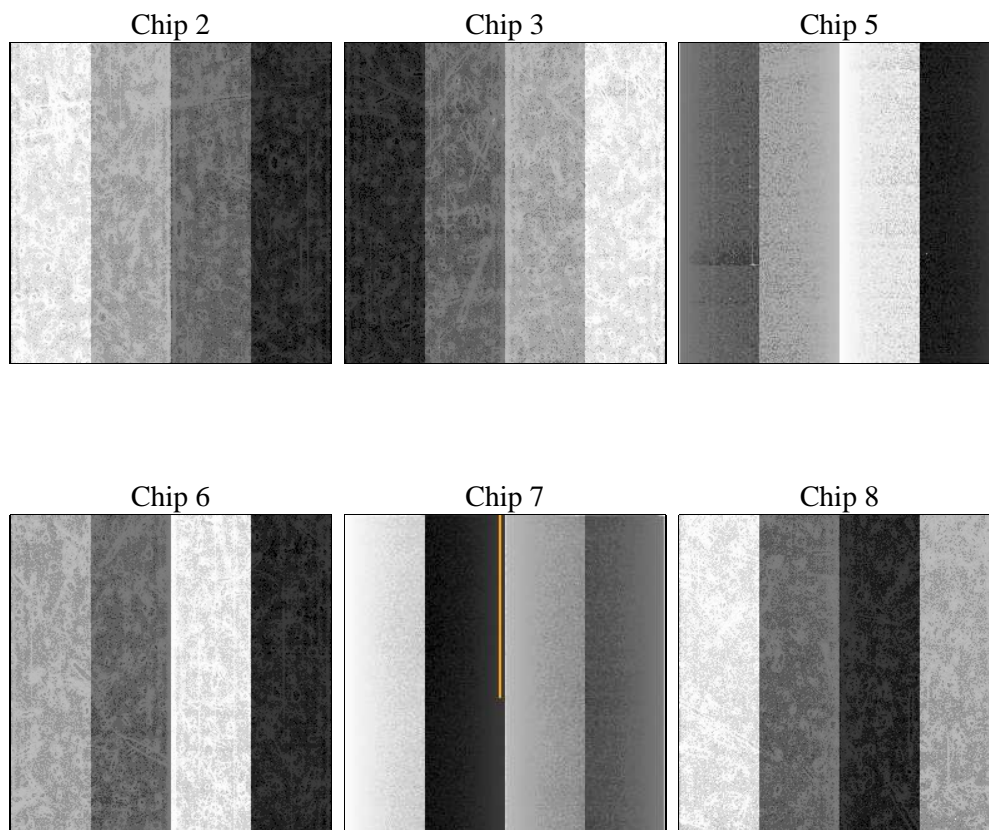
2 OBI

2.1 OBI

2.1.1 Images



2.1.2 Bias



2.1.3 Parameters

obi_num	0	Obi number	sched_exp_time	10000.000000	[s] Scheduled observation exposure time
ascdsver	10.3	Processing system revision	ontime	9964.7999629378	Sum of GTIs [s]
caldbver	4.6.4	 	ontime2	9964.7999629378	Sum of GTIs [s]
date	2014-11-05T05:03:29	Date and time of file creation	ontime3	9964.7980392575	Sum of GTIs [s]
revision	1	Processing version of data	ontime5	9964.7999629378	Sum of GTIs [s]
			ontime6	9961.5589526892	Sum of GTIs [s]
			ontime7	9964.7999629378	Sum of GTIs [s]
			ontime8	9964.7569992542	Sum of GTIs [s]
			l1events	384267	Number of level 1 events

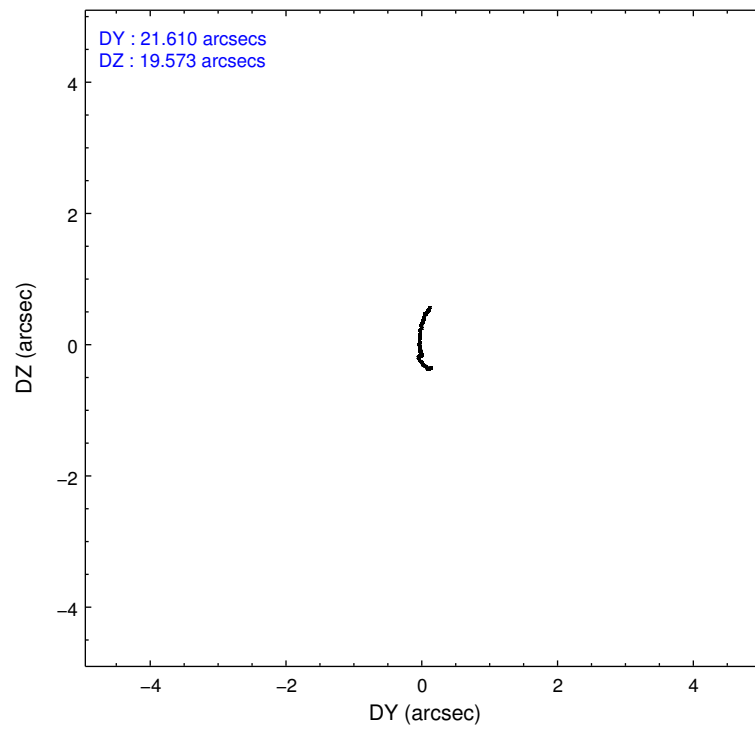
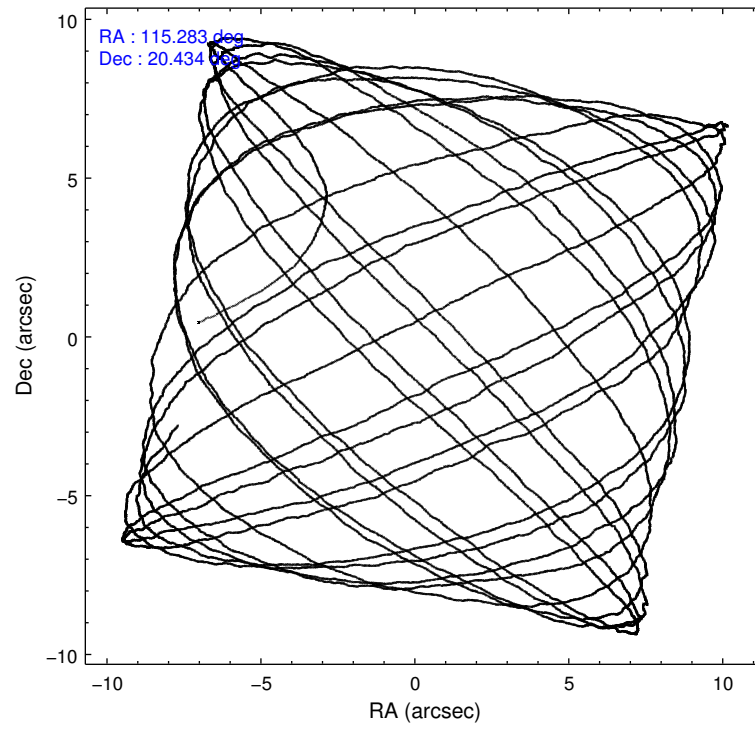
2.1.4 Events

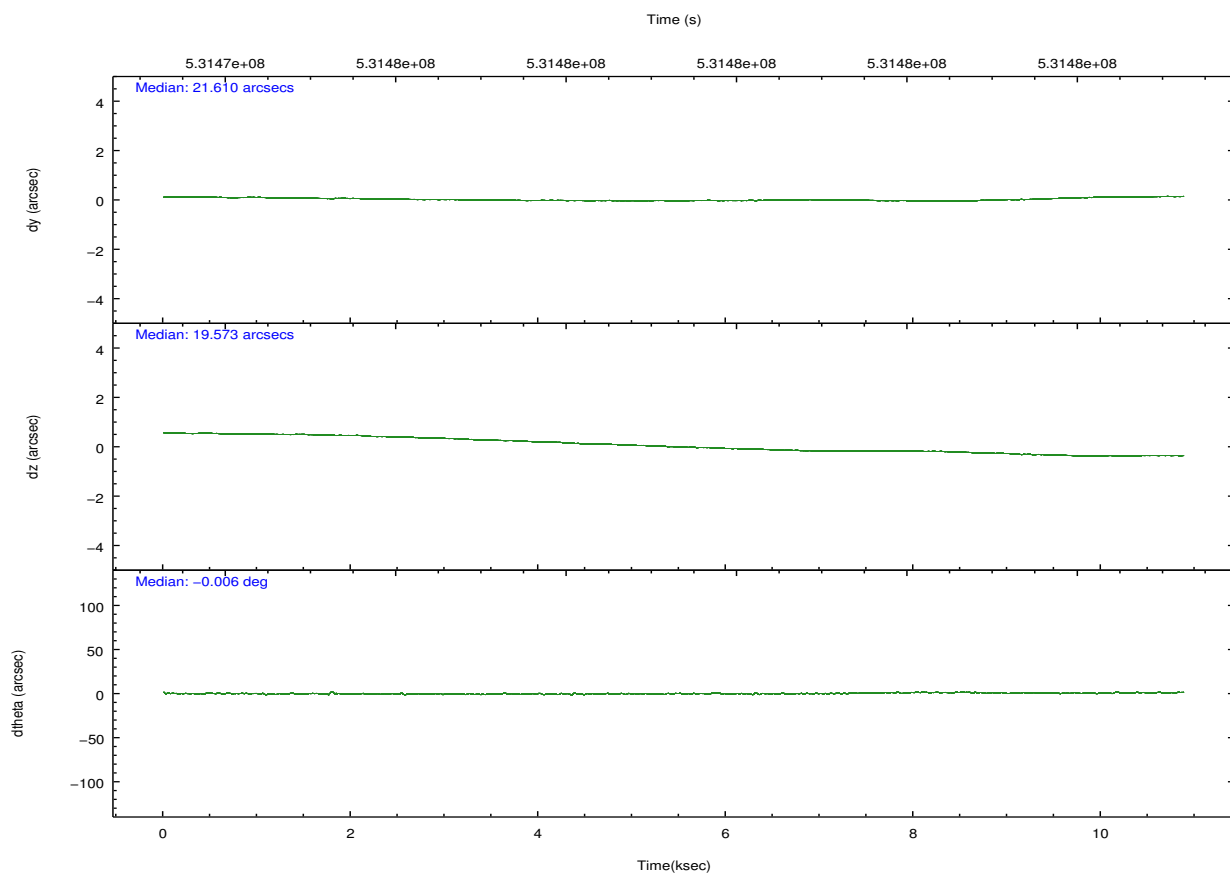
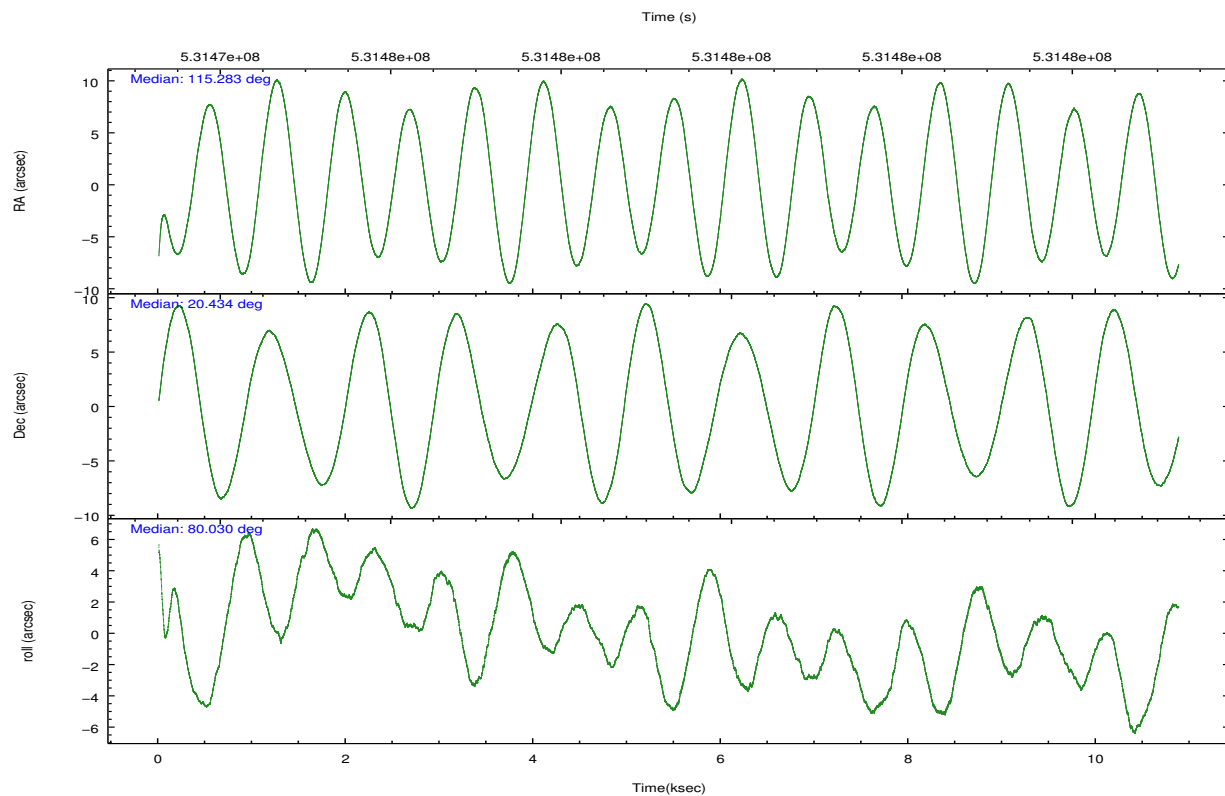
	ccd 2	ccd 3	ccd 5	ccd 6	ccd 7	ccd 8		ccd 2	ccd 3	ccd 5	ccd 6	ccd 7	ccd 8
level 1 events	51308	46370	85608	51026	69196	80759	grade 0 events	2432	2178	6568	2509	3082	10141
rejected events	44703	40254	42426	44095	38077	50400		4%	4%	7%	4%	4%	12%
rejected %	87%	86%	49%	86%	55%	62%	grade 1 events	36	28	172	25	109	79
								0%	0%	0%	0%	0%	0%
							grade 2 events	1588	1383	12778	1552	6589	5182
								3%	2%	14%	3%	9%	6%
							grade 3 events	587	566	1481	610	2697	4416
								1%	1%	1%	1%	3%	5%
							grade 4 events	655	610	1444	674	2622	4221
								1%	1%	1%	1%	3%	5%
							grade 5 events	2244	2486	6236	2531	7018	3712
								4%	5%	7%	4%	10%	4%
							grade 6 events	1343	1383	20922	1588	16139	6404
								2%	2%	24%	3%	23%	7%
							grade 7 events	42423	37736	36007	41537	30940	46604
								82%	81%	42%	81%	44%	57%

2.2 Compared Parameters

Parameter	Planned	Actual	Parameter	Planned	Actual
Instrument	ACIS	ACIS	Obspar format version number	7	7
Detector	ACIS-235678	ACIS-235678	Obspar file type	PREDICTED	ACTUAL
Grating	NONE	NONE	Obspar update status	NONE	UPDATED
Data mode	FAINT	FAINT	CCD I0 on	N	N
Observation mode	POINTING	POINTING	CCD I1 on	N	N
[deg] Pointing RA	115.292994	115.2825479688028	CCD I2 on	O1	Y
[deg] Pointing Dec	20.408069	20.43373142853661	CCD I3 on	O2	Y
[deg] Pointing Roll	79.874428	80.03470037825824	CCD S0 on	N	N
[mm] SIM focus pos	-0.684267	-0.6828225247311905	CCD S1 on	Y	Y
[mm] SIM defocus	0	0.001444936568705701	CCD S2 on	Y	Y
[mm] SIM translation stage pos	-190.132523	-190.1400660498719	CCD S3 on	Y	Y
[mm] SIM translation stage offset	0	0.00754346686406393	CCD S4 on	Y	Y
[s] Observation start time (MET)	531474714.184000	531472996.86183	CCD S5 on	N	N
Observation start date	2014-11-04T07:50:47	2014-11-04T07:23:16	Number of optional ACIS chips dropped	0	0
[s] Observation end time (MET)	531484714.184000	531485402.95002	On-chip summing requested	N	N
Observation end date	2014-11-04T10:37:27	2014-11-04T10:50:02	Subarray requested	NONE	NONE
Read mode	TIMED	TIMED	Alternating exposures requested	N	N
			[s] Primary exposure time	0.000000	3.2

2.3 Aspect



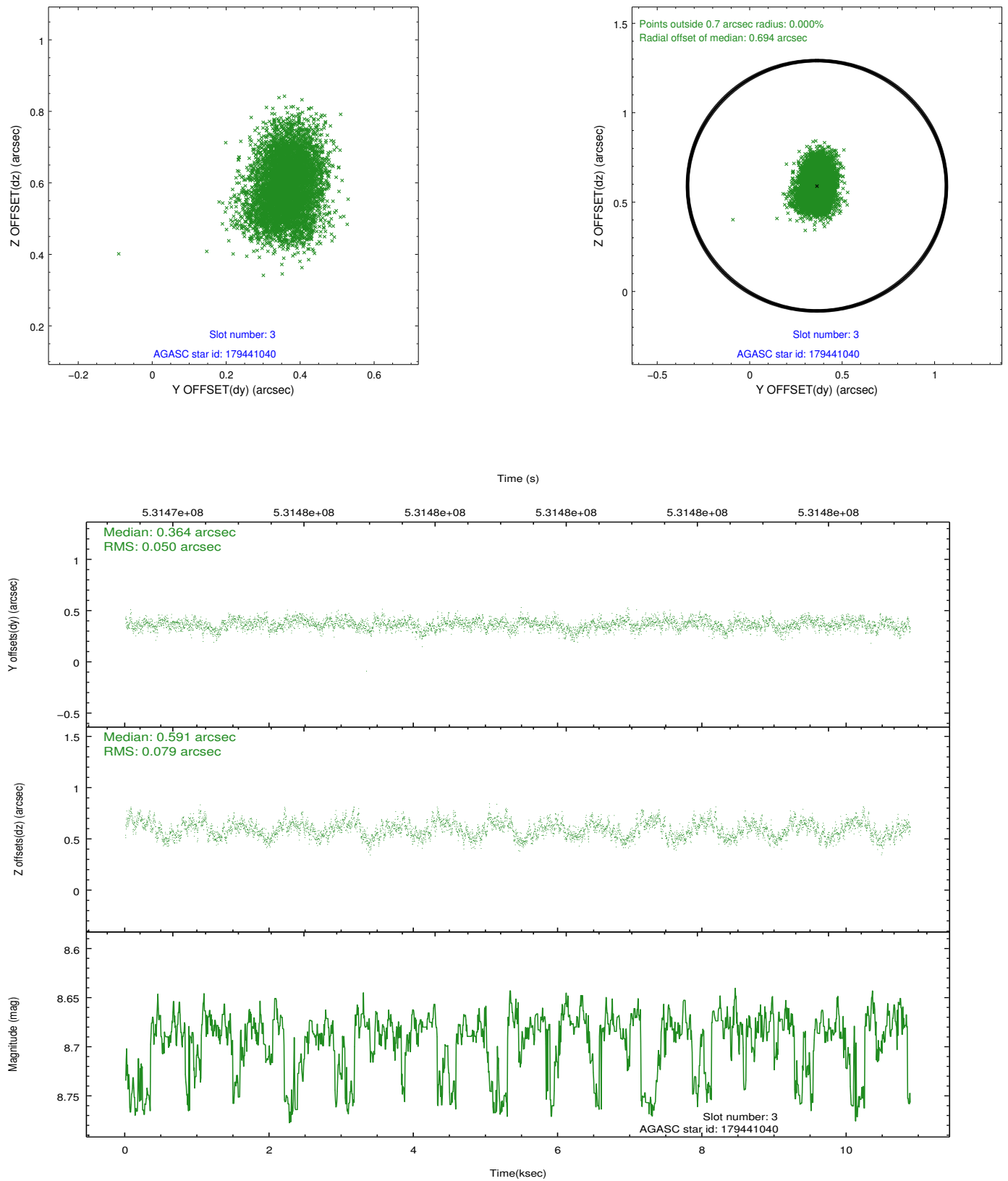


Slot Statistics

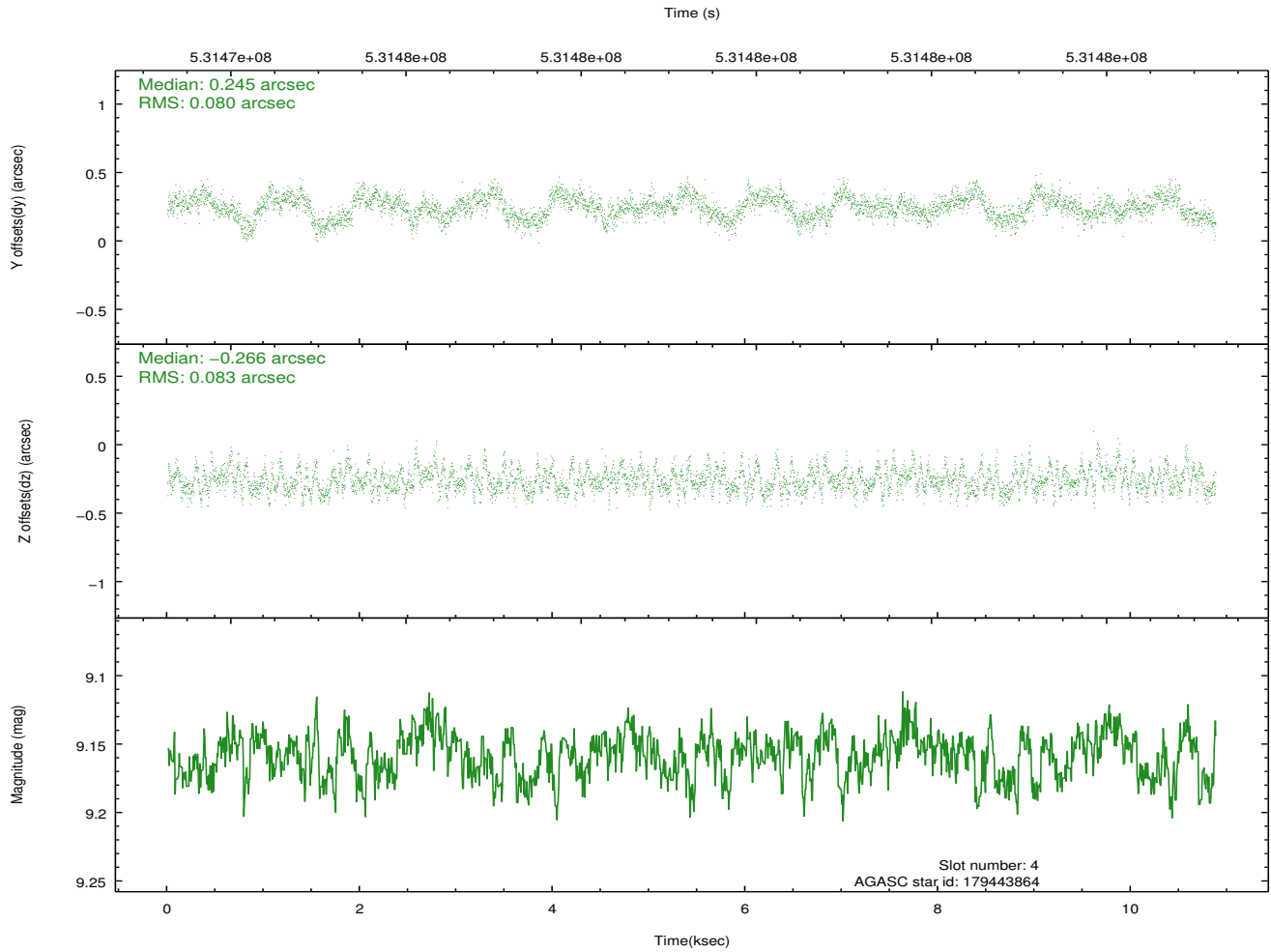
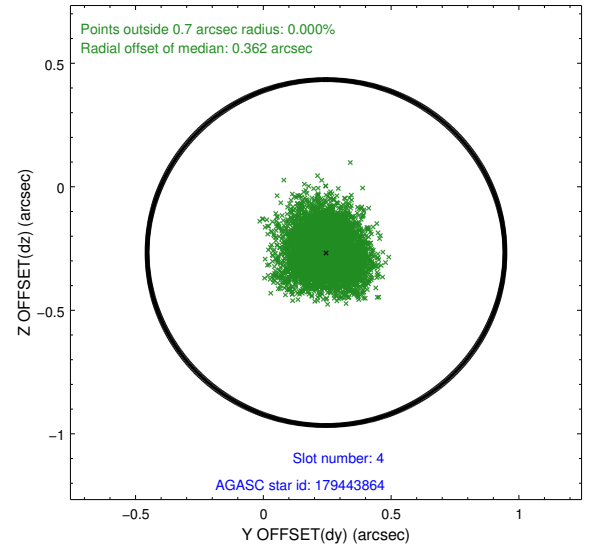
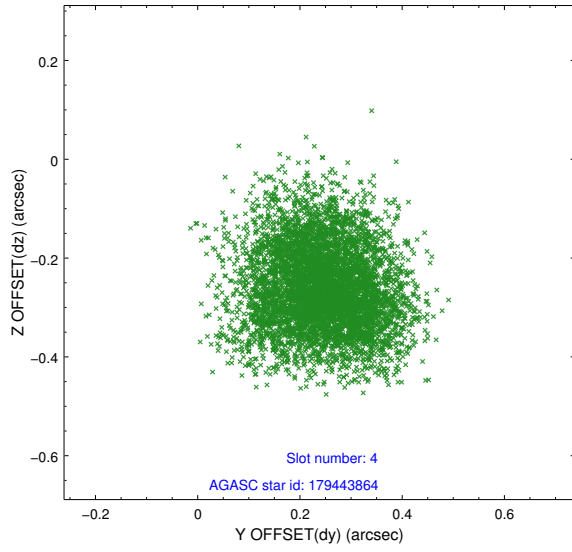
slot	status	used	id	mag	n_pts	med_dy	med_dz	dr1	dr2	ra	dec	mean_y	mean_z
0	FID		ACIS-S-1	6.93	2653	0.017	0.011	0.017	0.031	0.000000	0.000000	921.30	-1736.74
1	FID		ACIS-S-4	6.95	2653	0.180	-0.011	0.014	0.023	0.000000	0.000000	2139.09	166.93
2	FID		ACIS-S-5	6.97	2653	-0.224	0.014	0.008	0.013	0.000000	0.000000	-1827.25	161.00
3	GUIDE	used	179441040	8.69	5300	0.364	0.591	0.100	0.163	115.790234	20.117205	-732.19	-1837.89
4	GUIDE	used	179443864	9.16	5303	0.245	-0.266	0.124	0.198	114.709051	20.387185	-417.09	1926.69
5	GUIDE	used	179963584	8.78	5303	-0.244	-0.214	0.098	0.169	114.864941	20.840612	1281.13	1691.73
6	GUIDE	used	179968768	7.73	5307	-0.608	0.238	0.071	0.117	115.564493	20.976474	2175.38	-537.91
7	GUIDE	used	179437808	9.27	5296	0.232	-0.352	0.110	0.180	114.568836	20.243541	-1007.49	2304.13

2.4 Star Slots

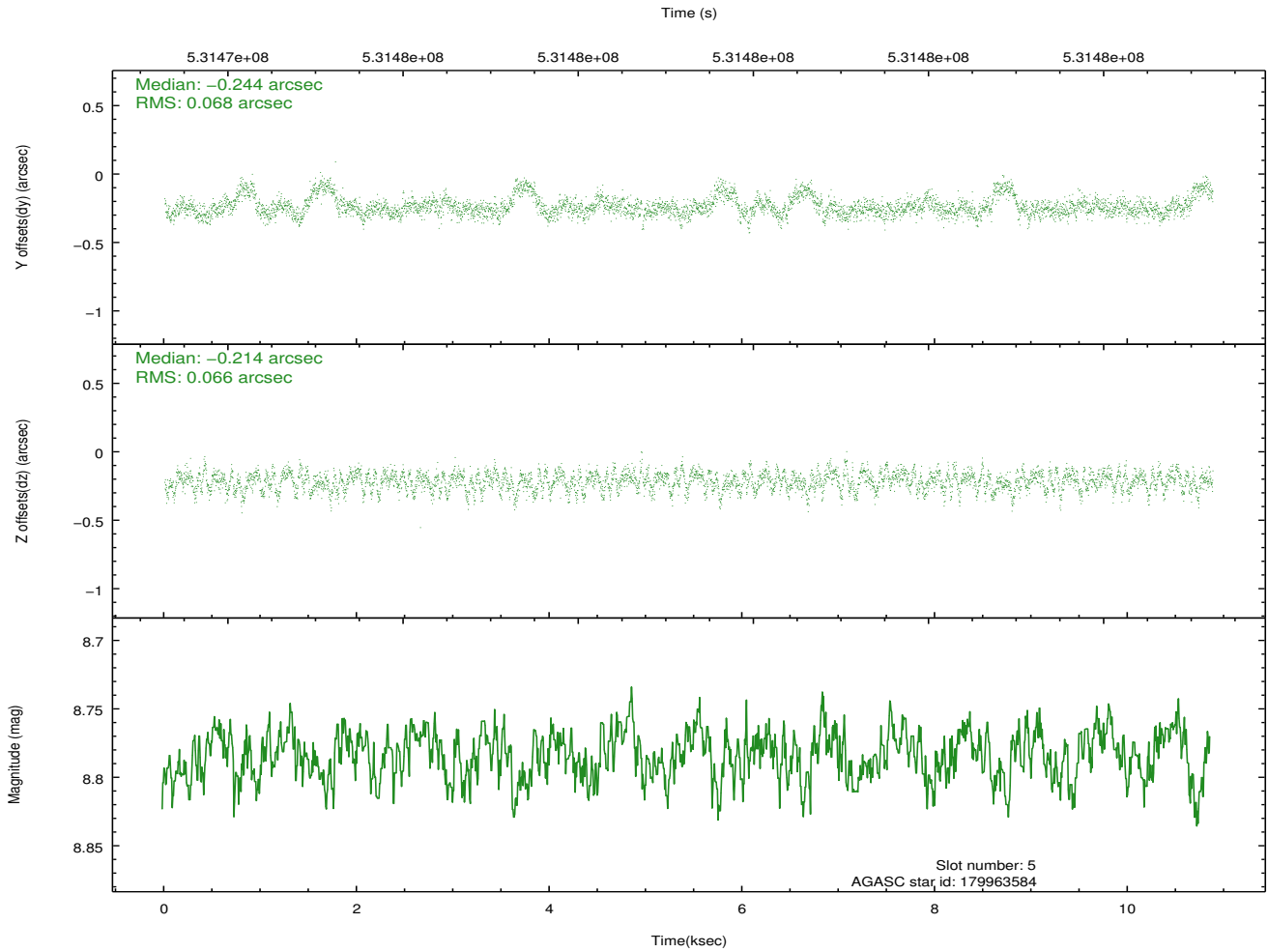
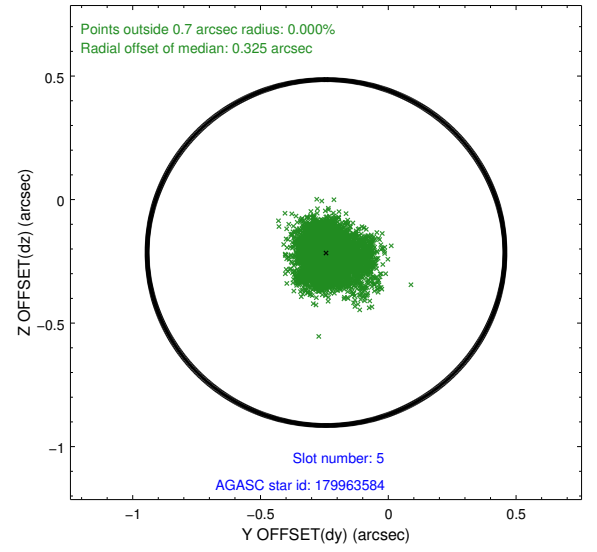
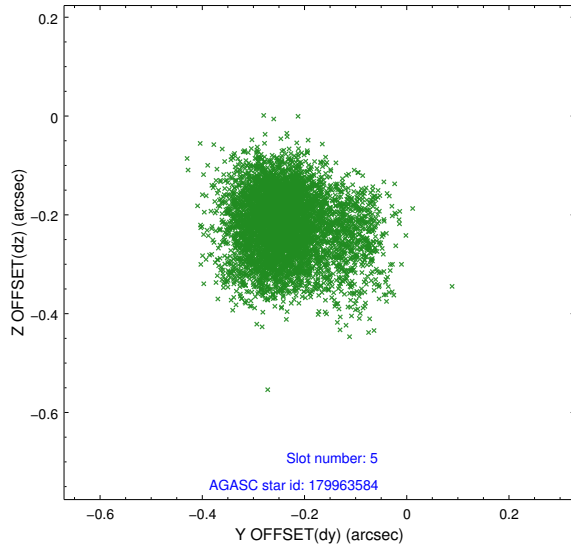
2.4.1 Slot 3



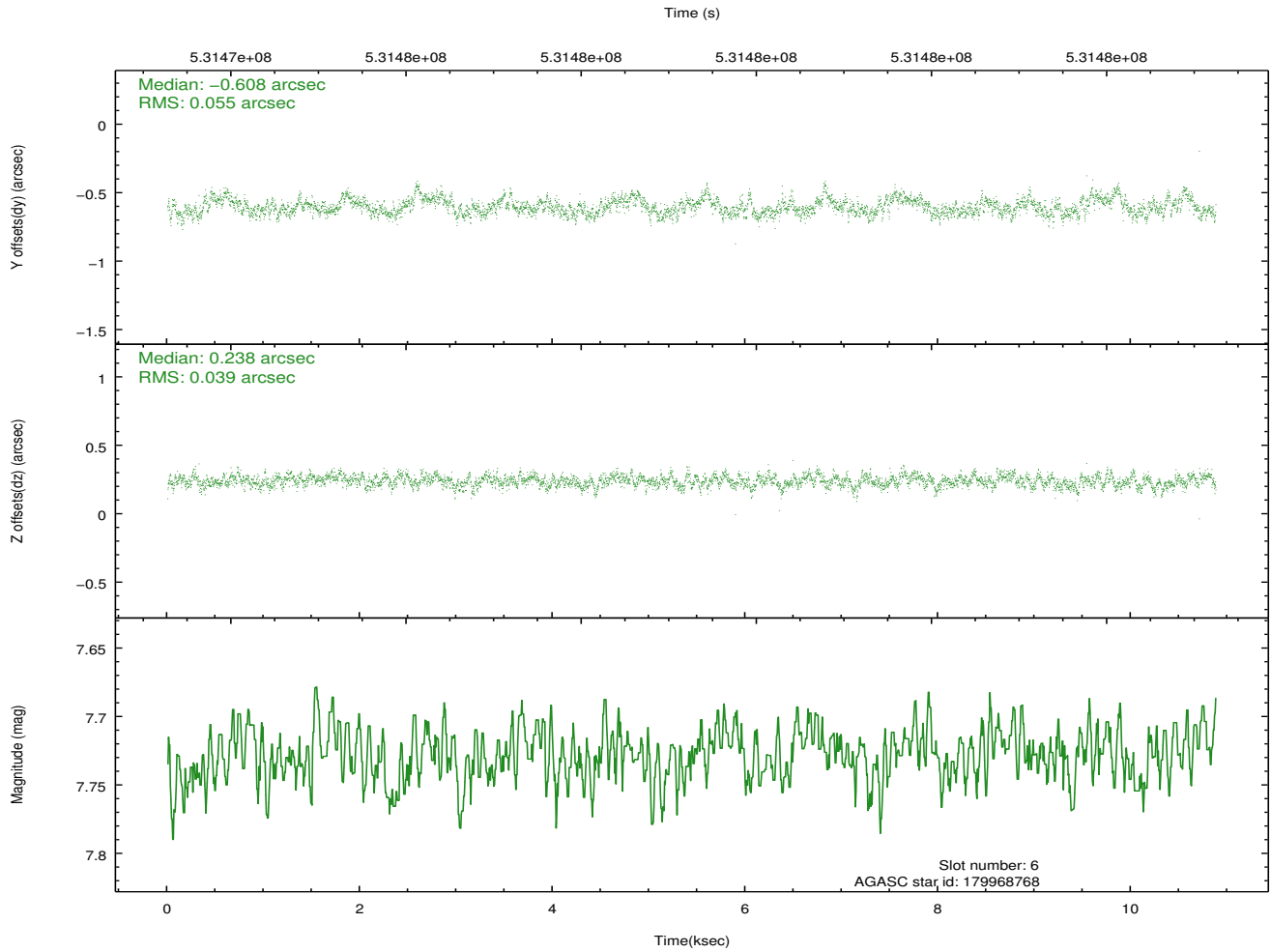
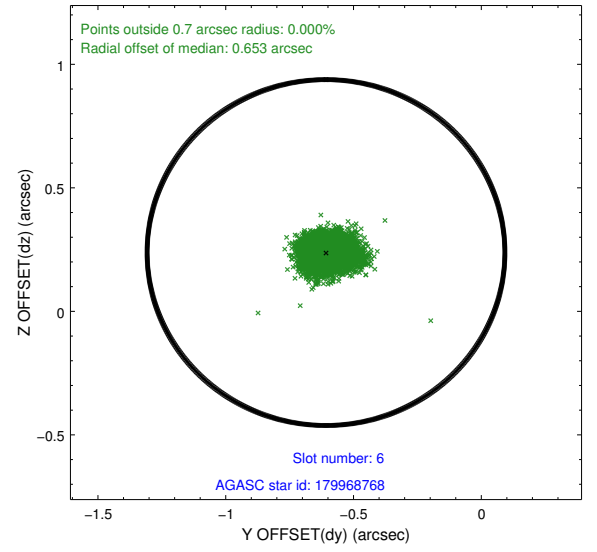
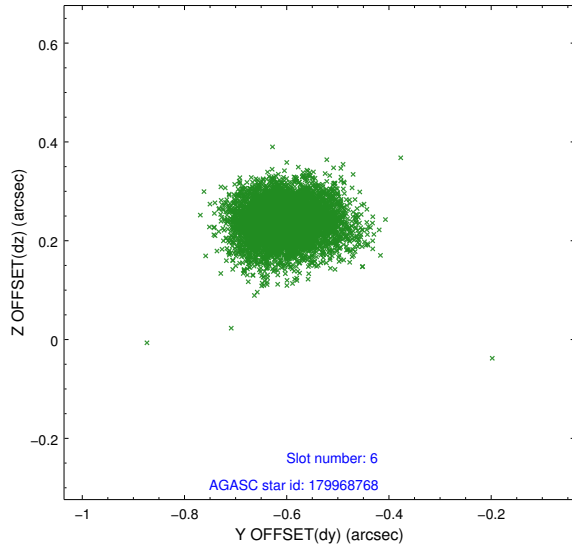
2.4.2 Slot 4



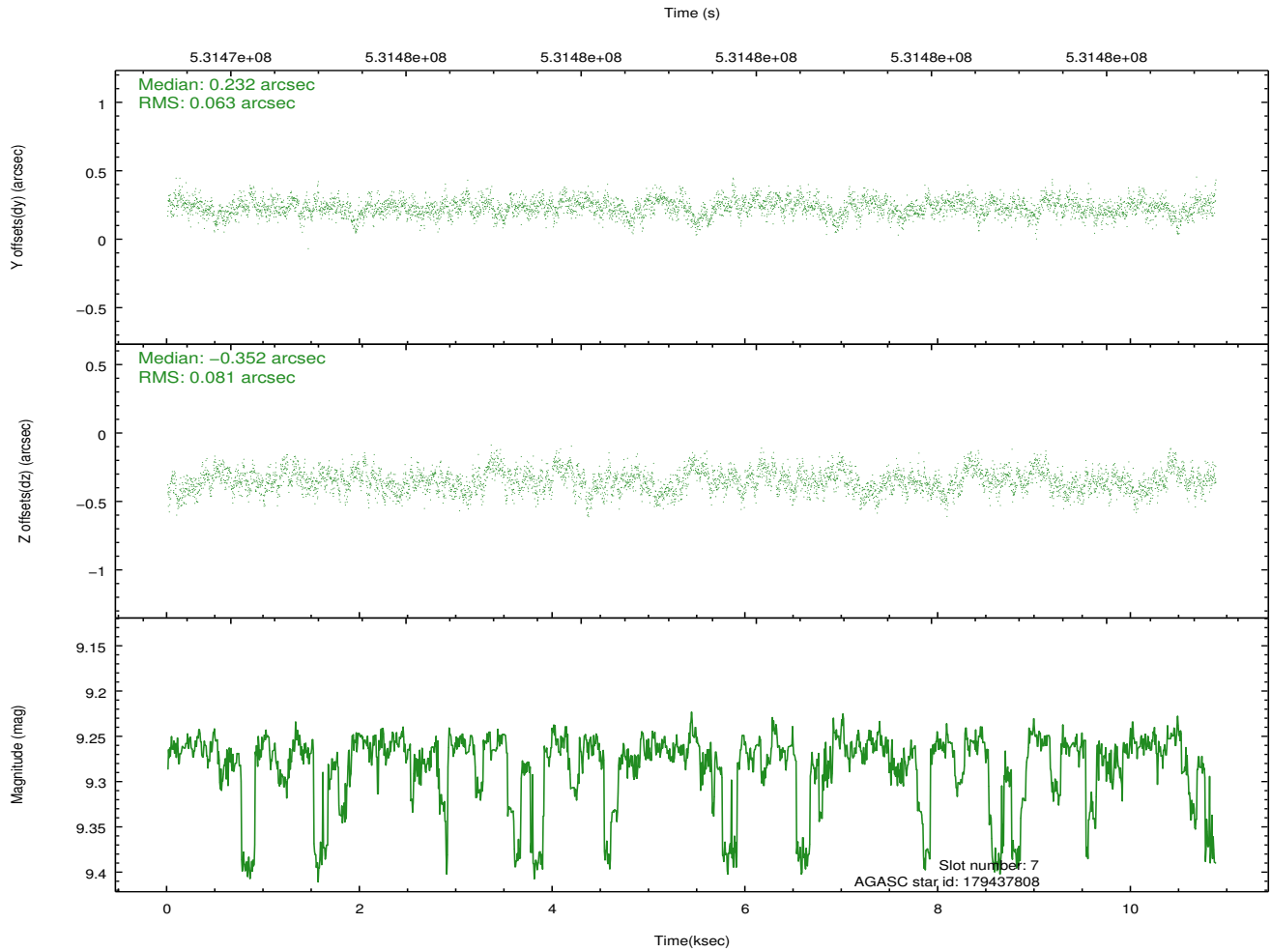
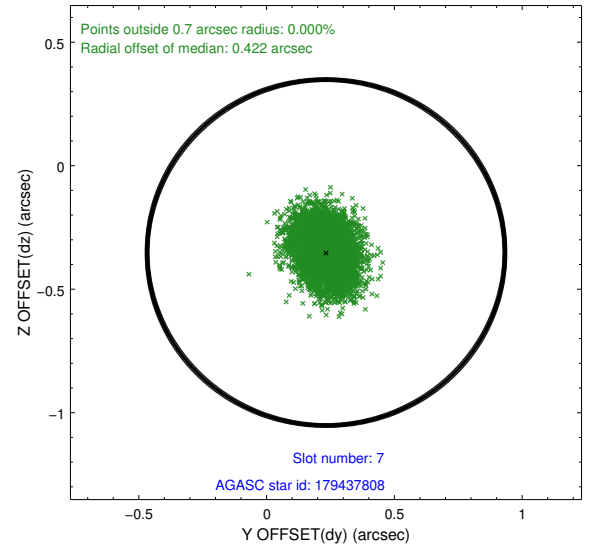
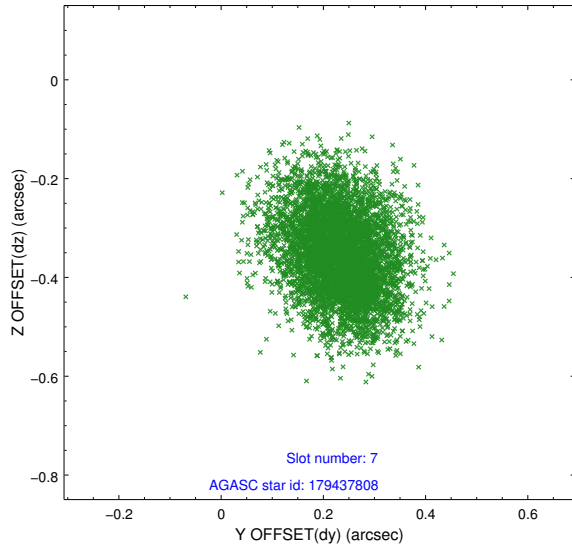
2.4.3 Slot 5



2.4.4 Slot 6

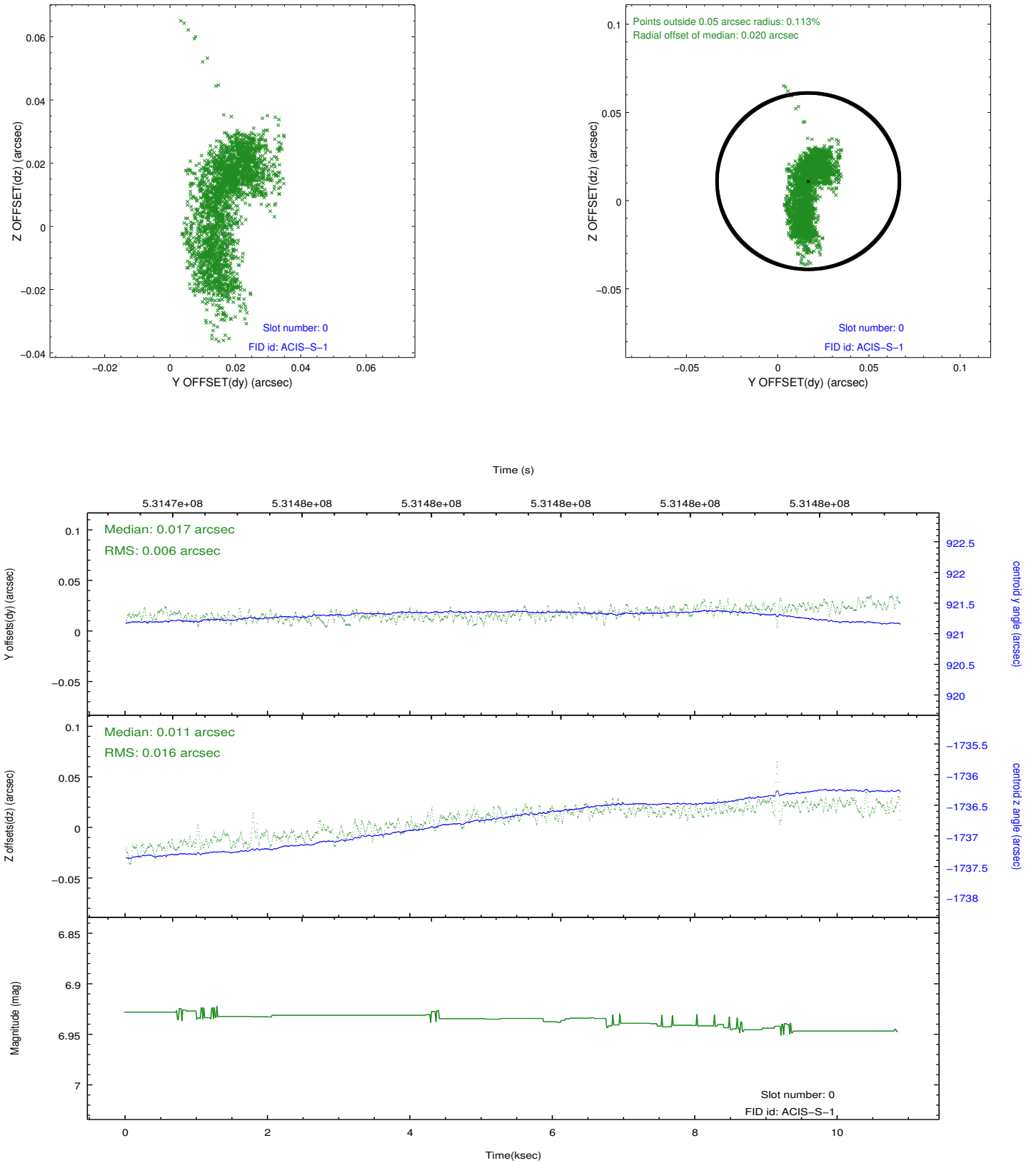


2.4.5 Slot 7

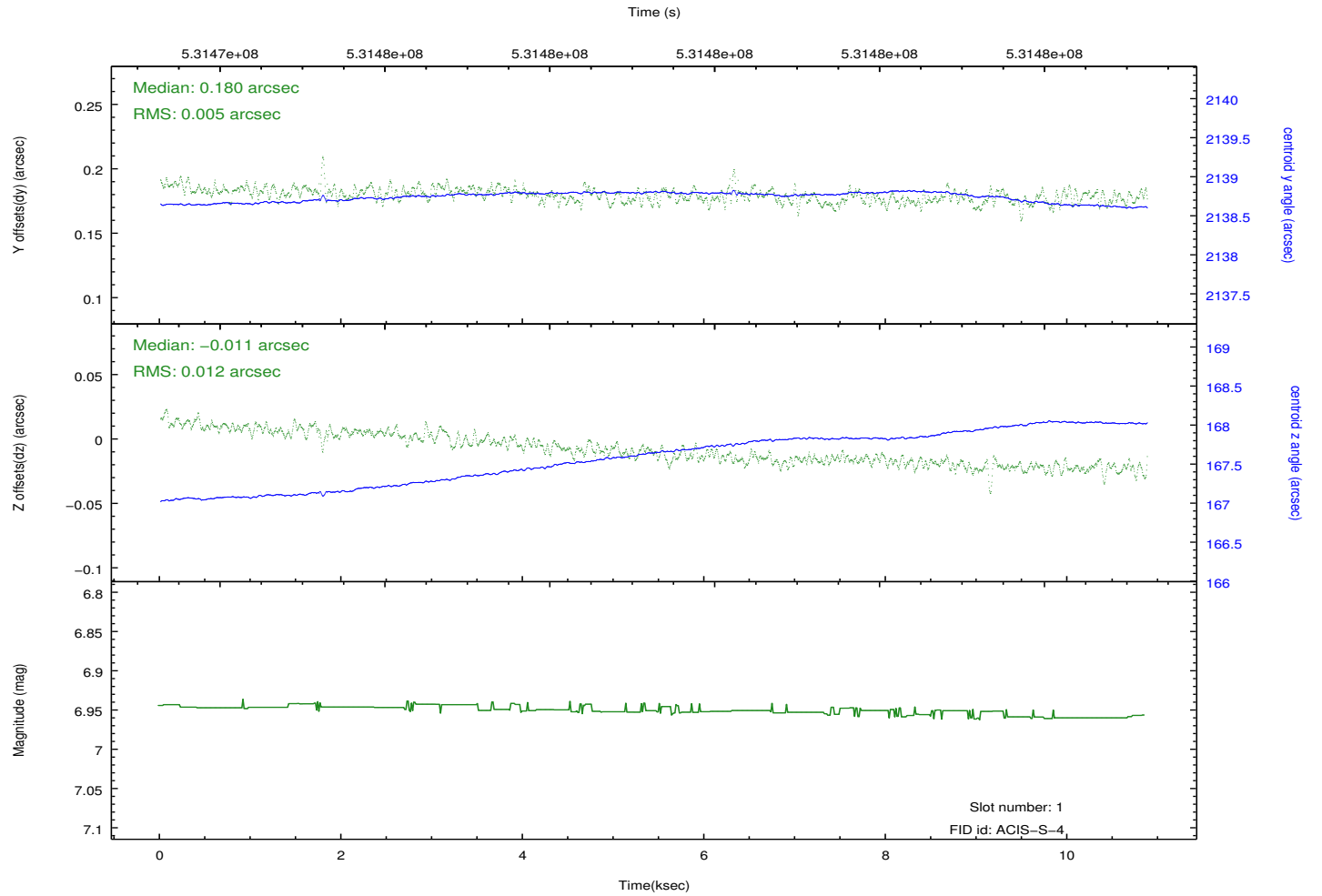
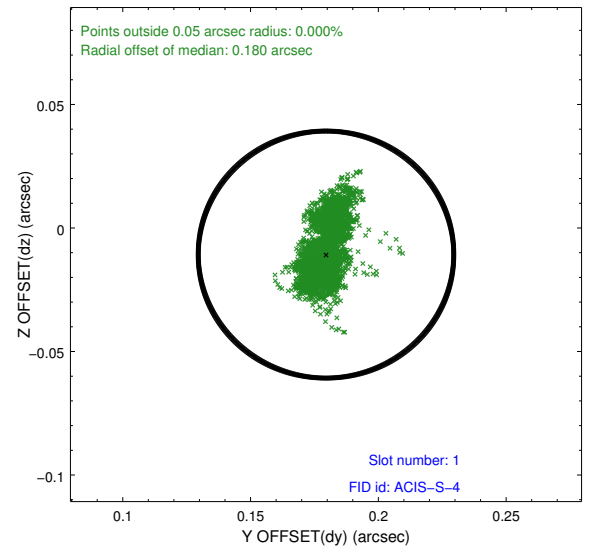
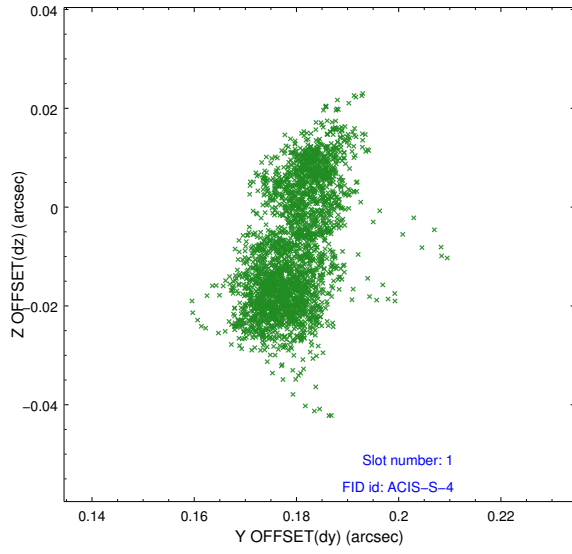


2.5 FID Slots

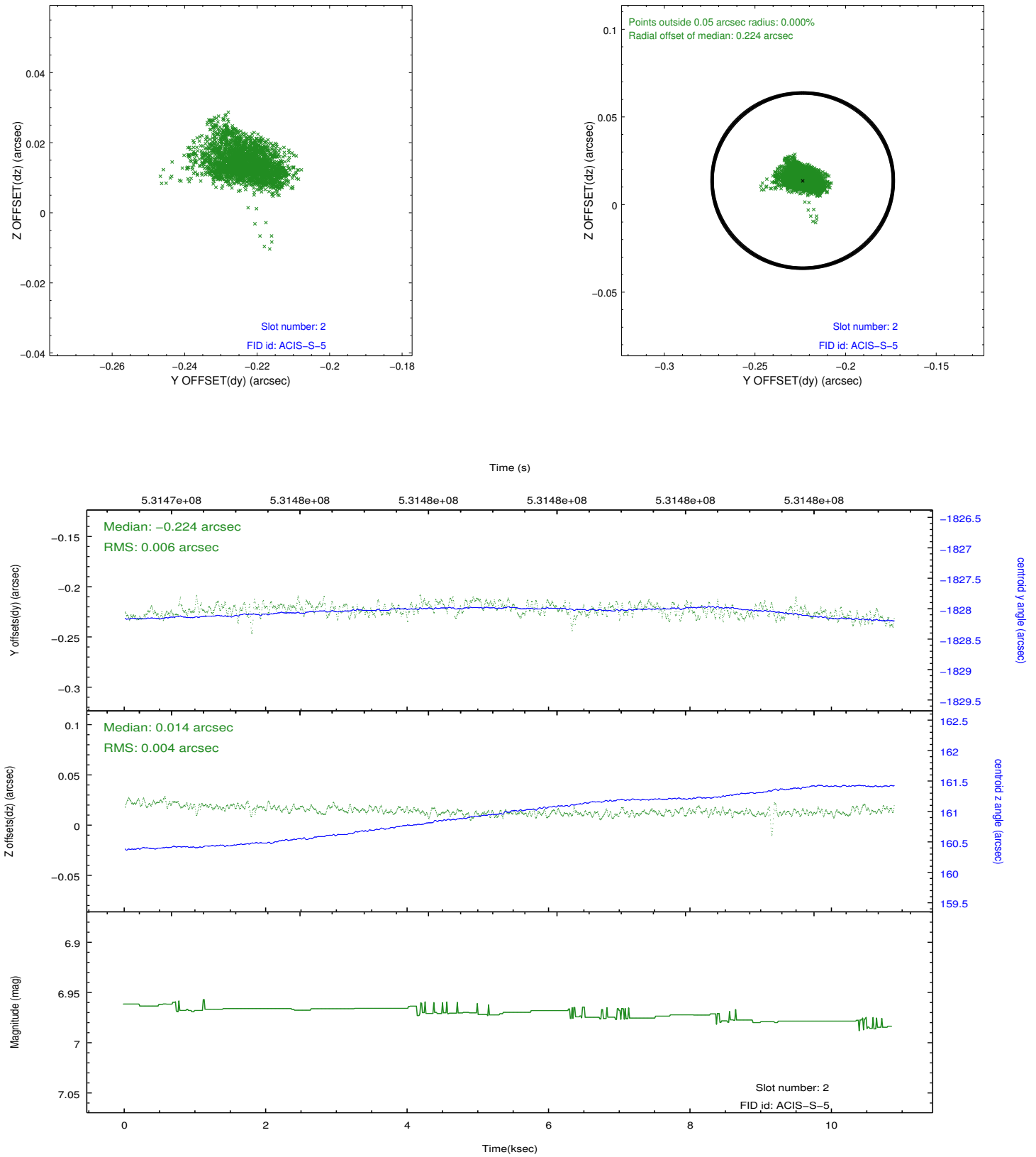
2.5.1 Slot 0



2.5.2 Slot 1



2.5.3 Slot 2



A Summary

A.1 Status

V&V Scientist	Joy Nichols
V&V Date (YYYY-MM-DD)	2014.11.05
V&V Edition	1
V&V Disposition and Status	OK
V&V Charge Time	9.9647999629378

A.2 Comments