

V&V Reference Report

L2 ASCDS Version : 10.2.4

Observation 17542 - L2 Version 1
Chandra X-Ray Center

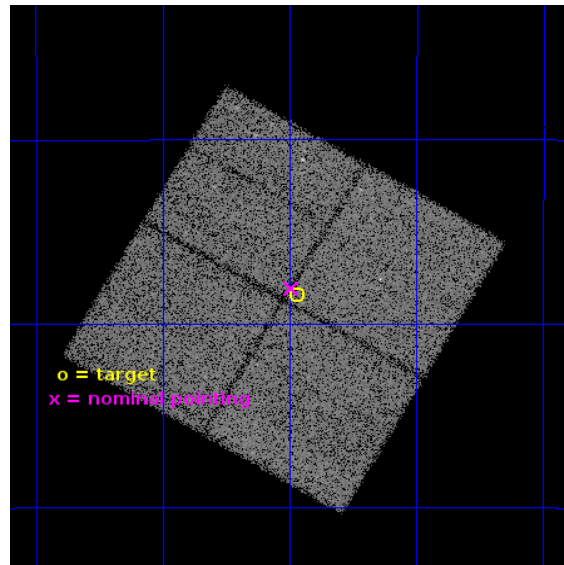
L2 Processing Date : Oct 27 2014

Contents

1	Front	2
2	OBI	3
2.1	OBI	3
2.1.1	Images	3
2.1.2	Bias	3
2.1.3	Parameters	4
2.1.4	Events	4
2.2	Compared Parameters	5
2.3	Aspect	6
2.4	Star Slots	9
2.4.1	Slot 3	9
2.4.2	Slot 4	10
2.4.3	Slot 5	11
2.4.4	Slot 6	12
2.4.5	Slot 7	13
2.5	FID Slots	14
2.5.1	Slot 0	14
2.5.2	Slot 1	15
2.5.3	Slot 2	16
A	Summary	17
A.1	Status	17
A.2	Comments	17

1 Front

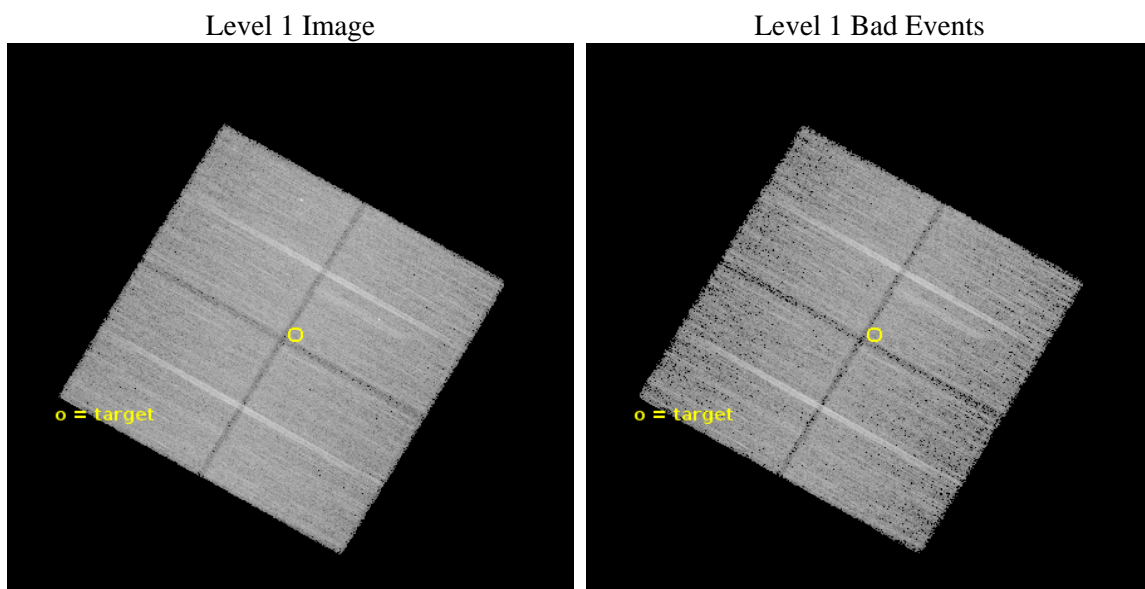
seq_num	901115	Sequence number
obs_id	17542	Observation id
title	The Chandra Deep Field-South: A Peerless Ultradeep Survey for Exploring the Distant X-ray Universe	Proposal title
observer	Prof. W.N. Brandt	Principal investigator
object	Chandra Deep Field-South	Source name
dtcycle	0	
cycle	P	events from which exps? Prim/Second/Both
ra_targ	53.117083	Observer's specified target RA [deg]
dec_targ	-27.807333	Observer's specified target Dec [deg]
ra_nom	53.123302425556	Nominal RA [deg]
dec_nom	-27.801285462567	Nominal Dec [deg]
roll_nom	30.211587388906	Nominal Roll [deg]
revision	1	Processing version of data
ontime	35085.800269842	Sum of GTIs [s]
livetime	34627.378459526	Livetime [s]
ontime0	35085.800269842	Sum of GTIs [s]
ontime1	35085.800269842	Sum of GTIs [s]
ontime2	35085.800269842	Sum of GTIs [s]
ontime3	35085.800269842	Sum of GTIs [s]
l2events	119084	Number of level 2 events



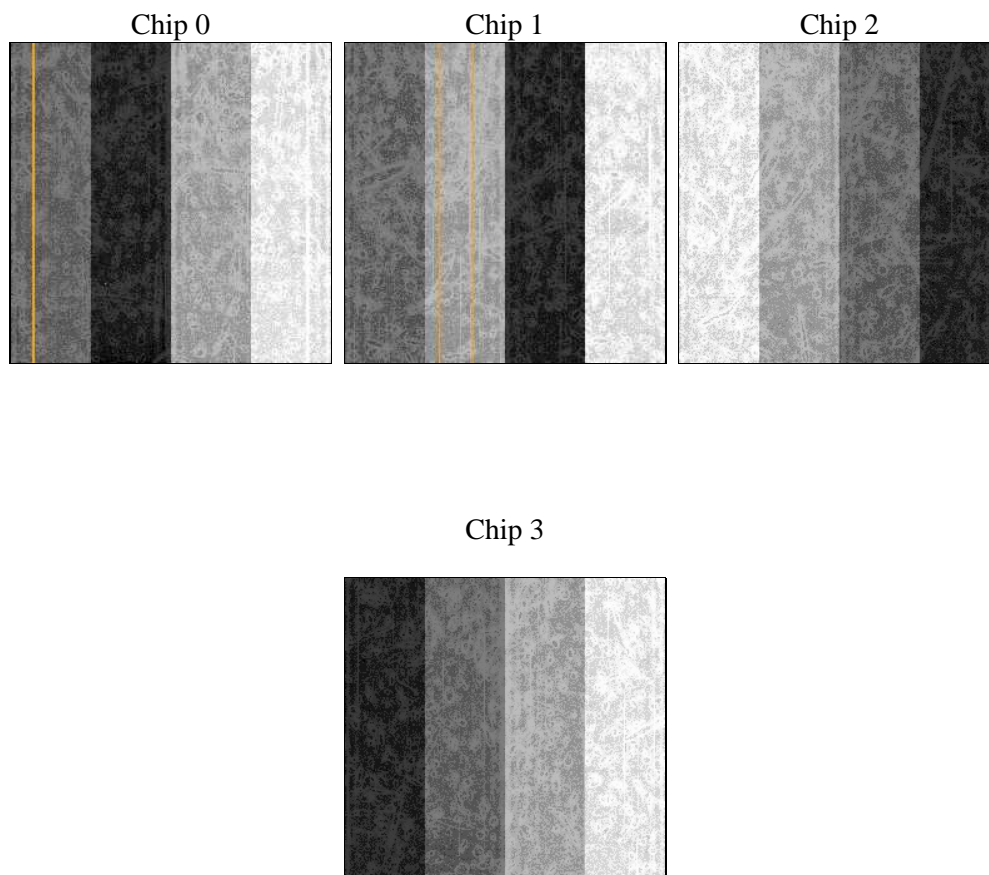
2 OBI

2.1 OBI

2.1.1 Images



2.1.2 Bias



2.1.3 Parameters

obi_num	0	Obi number	sched_exp_time	35000.000000	[s] Scheduled observation exposure time
ascdsver	10.2.4	Processing system revision	ontime	35085.800269842	Sum of GTIs [s]
caldsver	4.6.3	 	ontime0	35085.800269842	Sum of GTIs [s]
date	2014-10-27T13:47:51	Date and time of file creation	ontime1	35085.800269842	Sum of GTIs [s]
revision	1	Processing version of data	ontime2	35085.800269842	Sum of GTIs [s]
			ontime3	35085.800269842	Sum of GTIs [s]
			l1events	740936	Number of level 1 events

2.1.4 Events

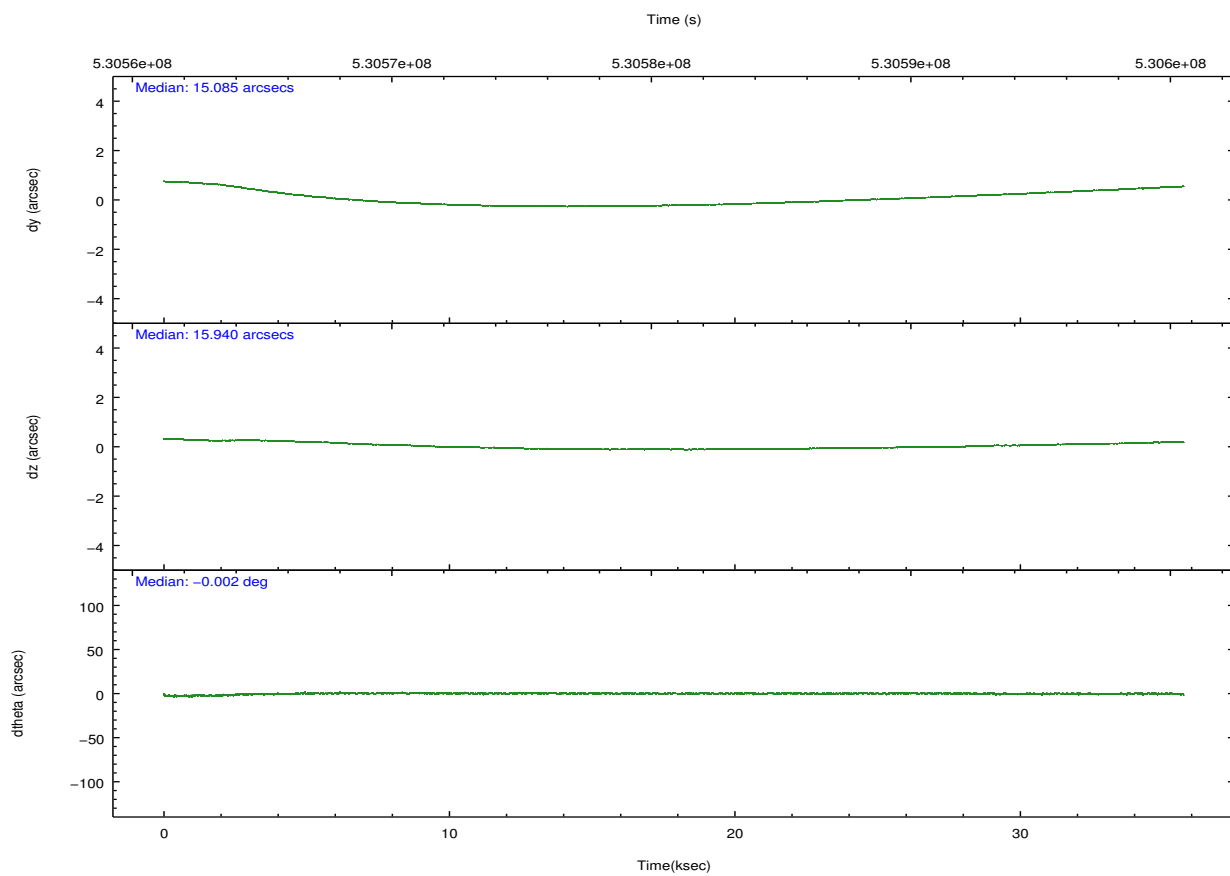
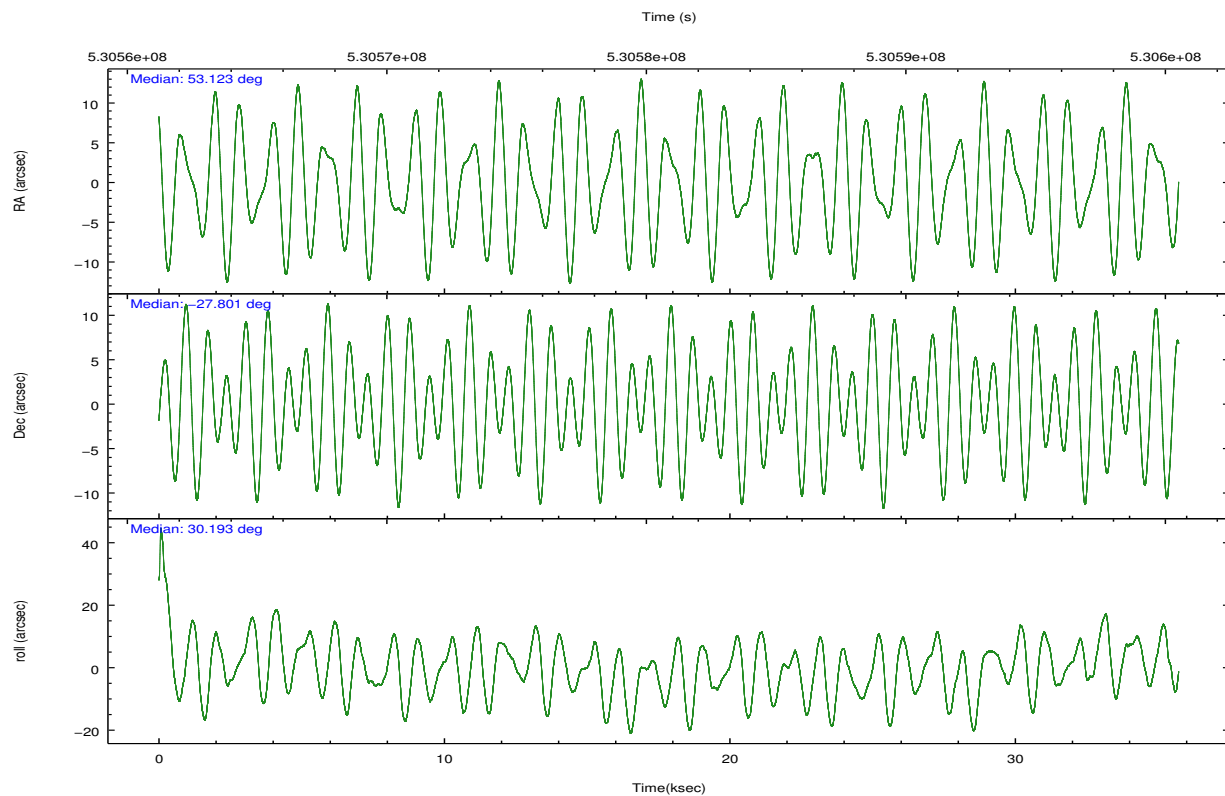
	ccd 0	ccd 1	ccd 2	ccd 3
level 1 events	174325	179851	190318	196442
rejected events	141483	144855	156992	162715
rejected %	81%	80%	82%	82%

	ccd 0	ccd 1	ccd 2	ccd 3
grade 0 events	11197	11330	12074	11811
	6%	6%	6%	6%
grade 1 events	102	103	97	145
	0%	0%	0%	0%
grade 2 events	7140	8119	6753	6654
	4%	4%	3%	3%
grade 3 events	2995	2945	3048	3098
	1%	1%	1%	1%
grade 4 events	2847	2925	3002	3162
	1%	1%	1%	1%
grade 5 events	8012	8641	7706	9184
	4%	4%	4%	4%
grade 6 events	8673	9679	8450	9004
	4%	5%	4%	4%
grade 7 events	133359	136109	149188	153384
	76%	75%	78%	78%

2.2 Compared Parameters

Parameter	Planned	Actual	Parameter	Planned	Actual
Instrument	ACIS	ACIS	Obspar format version number	7	7
Detector	ACIS-0123	ACIS-0123	Obspar file type	PREDICTED	ACTUAL
Grating	NONE	NONE	Obspar update status	NONE	UPDATED
Data mode	VFAINT	VFAINT	Number of optional ACIS chips dropped	0	0
Observation mode	POINTING	POINTING	On-chip summing requested	N	N
[deg] Pointing RA	53.107919	53.1233024255559	Subarray requested	NONE	NONE
[deg] Pointing Dec	-27.825297	-27.80128546256699	Alternating exposures requested	N	N
[deg] Pointing Roll	29.995716	30.2115873889064	[s] Primary exposure time	0.000000	3.1
[mm] SIM focus pos	-0.782348	-0.7809083437167272			
[mm] SIM defocus	0	0.001439871863259334			
[mm] SIM translation stage pos	-233.592463	-233.5874344608287			
[mm] SIM translation stage offset	0	-0.005018542100998502			
[s] Observation start time (MET)	530563729.184000	530562515.44867			
Observation start date	2014-10-24T18:47:42	2014-10-24T18:28:35			
[s] Observation end time (MET)	530598729.184000	530599664.01323			
Observation end date	2014-10-25T04:31:02	2014-10-25T04:47:44			
Read mode	TIMED	TIMED			

2.3 Aspect

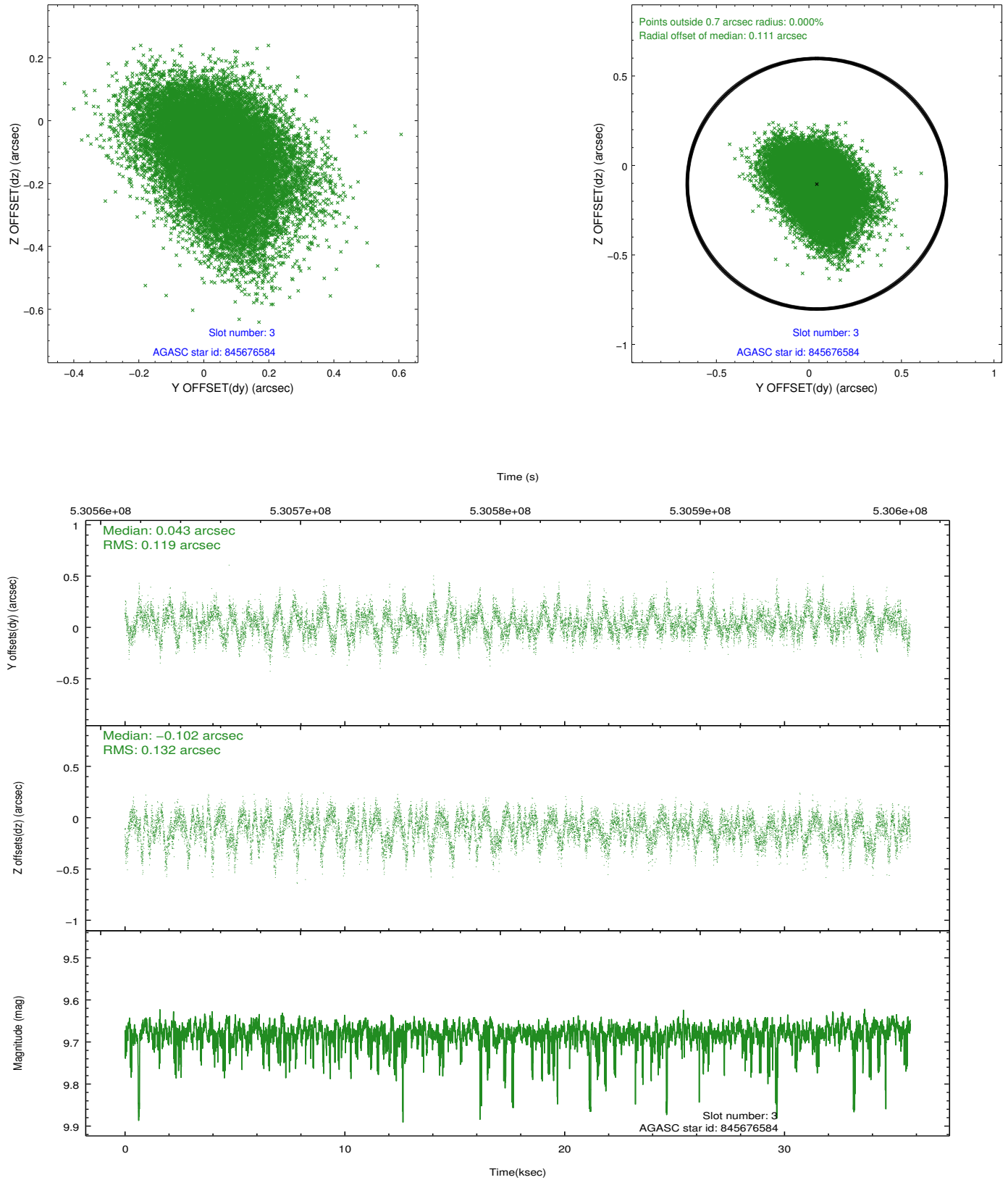


Slot Statistics

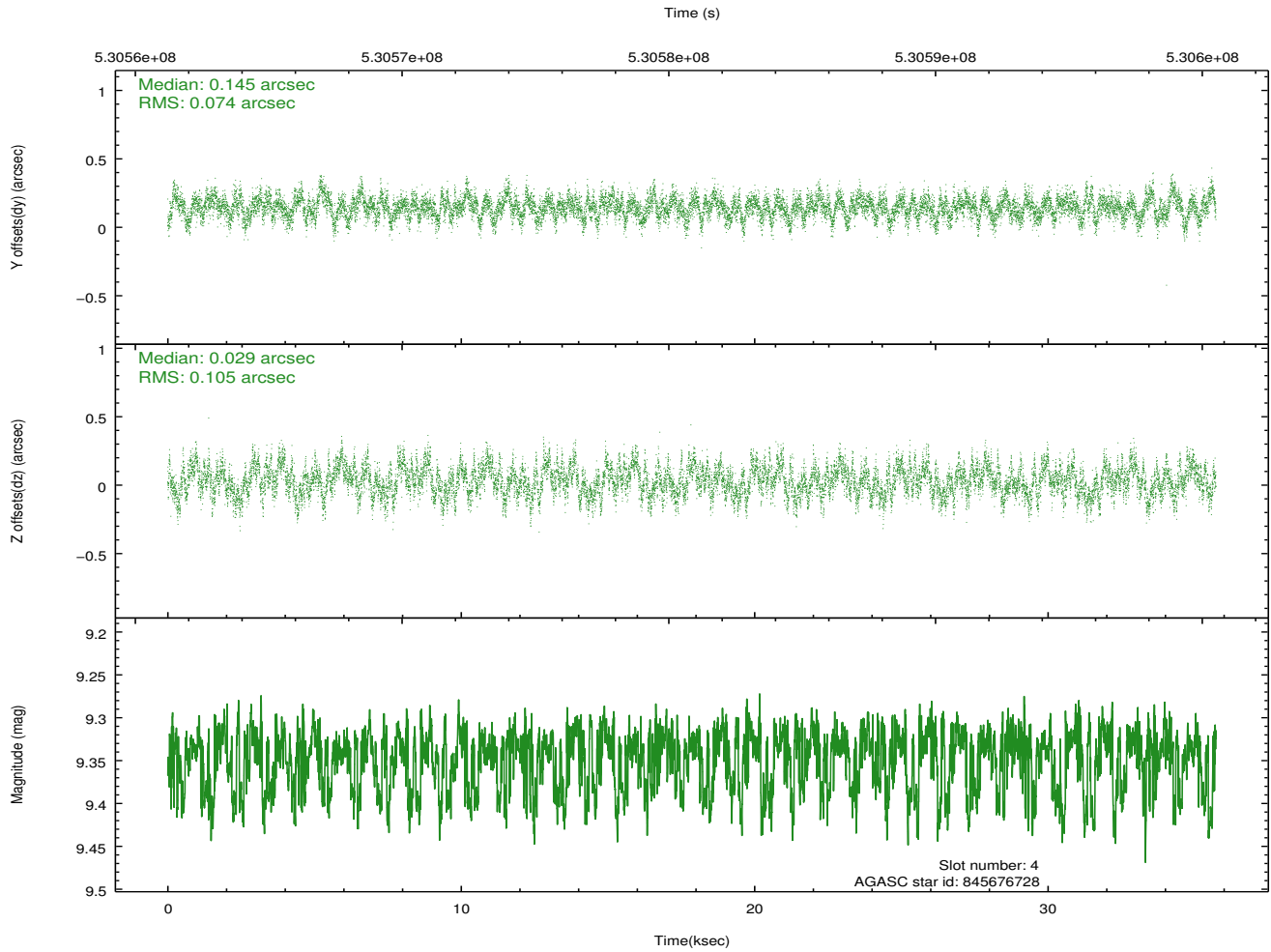
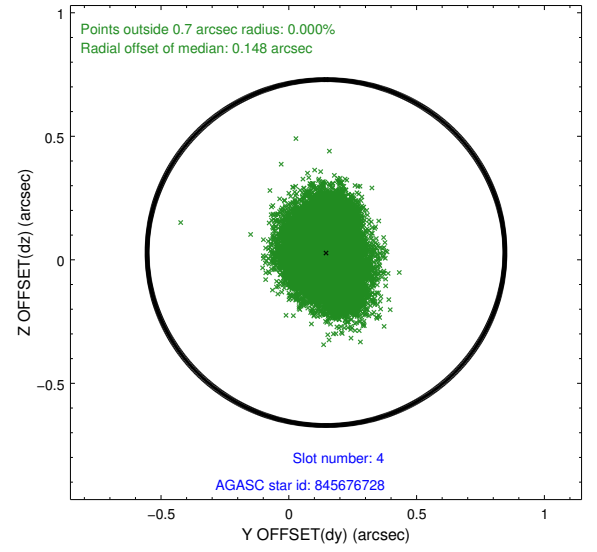
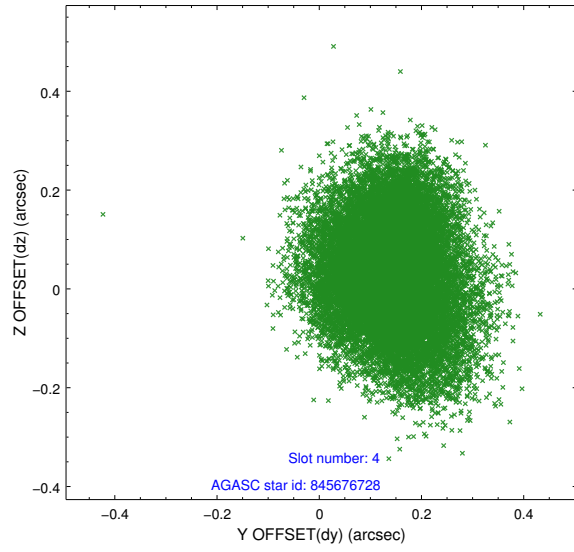
slot	status	id	mag	n_pts	med_dy	med_dz	dr1	dr2	ra	dec	mean_y	mean_z
0	FID	ACIS-I-1	7.26	8713	0.063	-0.052	0.010	0.019	0.000000	0.000000	924.36	-839.65
1	FID	ACIS-I-5	7.27	8713	-0.237	0.054	0.007	0.013	0.000000	0.000000	-1824.02	1057.93
2	FID	ACIS-I-6	7.26	8712	0.082	0.067	0.009	0.016	0.000000	0.000000	389.89	1702.48
3	GUIDE	845676584	9.68	17415	0.043	-0.102	0.188	0.308	52.264247	-27.542890	-1828.98	2218.64
4	GUIDE	845676728	9.34	17415	0.145	0.029	0.140	0.220	52.877179	-27.664318	-347.61	869.64
5	GUIDE	845676936	9.49	17413	-0.068	0.001	0.172	0.300	52.843773	-27.880153	-826.30	248.55
6	GUIDE	845807880	8.80	17415	-0.149	0.114	0.136	0.209	53.382027	-27.886093	645.91	-625.61
7	GUIDE	845813656	10.17	17335	0.062	-0.028	0.328	0.664	53.922767	-28.083703	1773.52	-2105.98

2.4 Star Slots

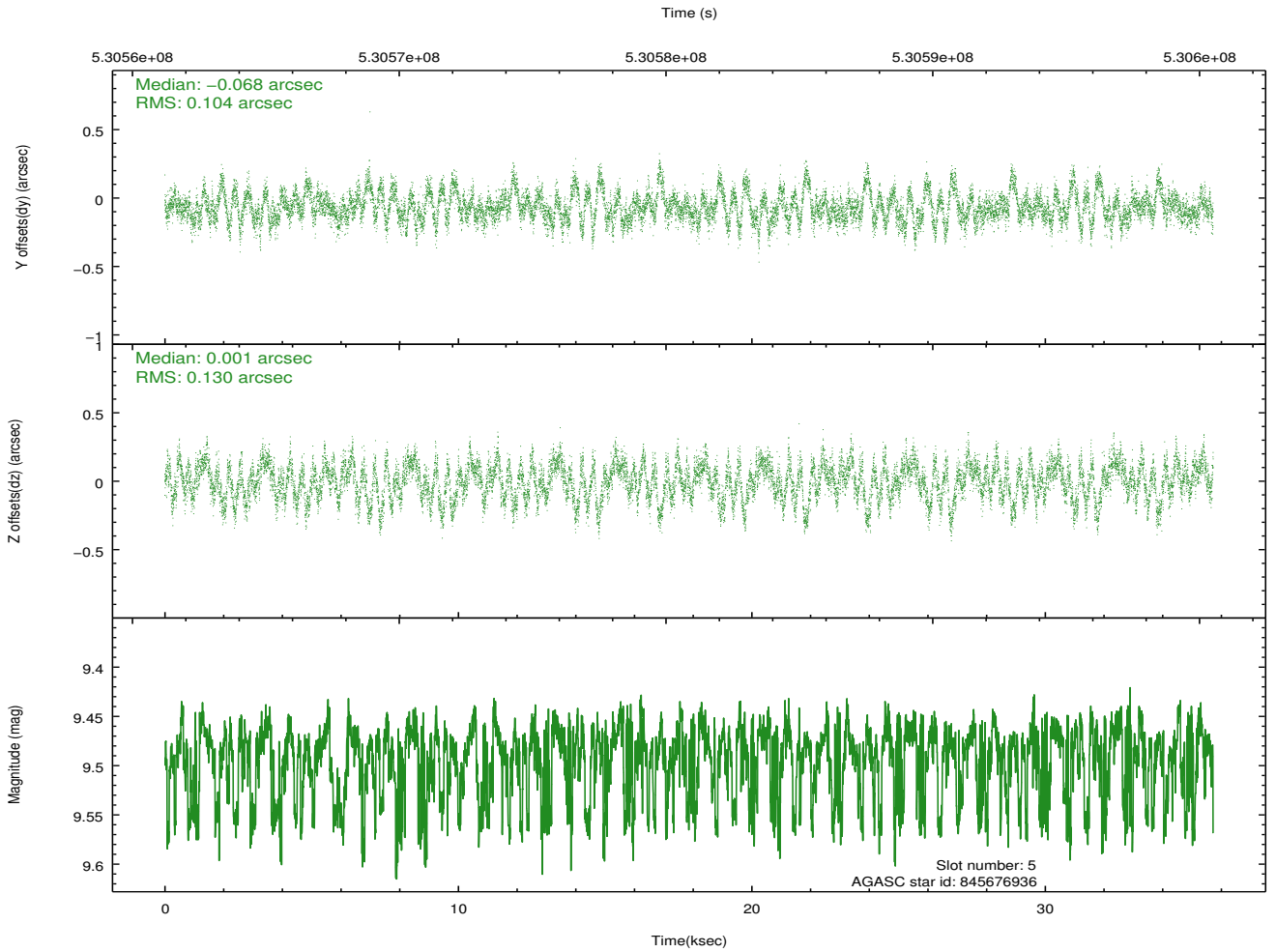
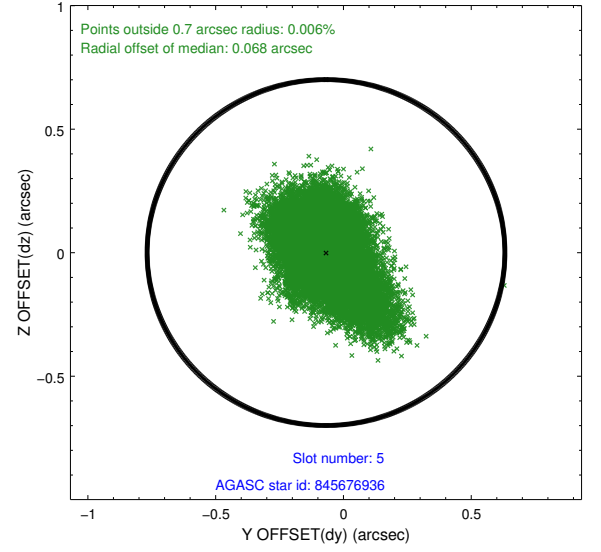
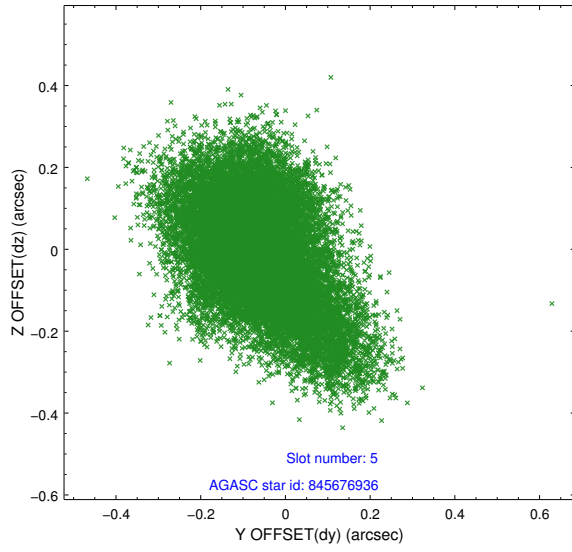
2.4.1 Slot 3



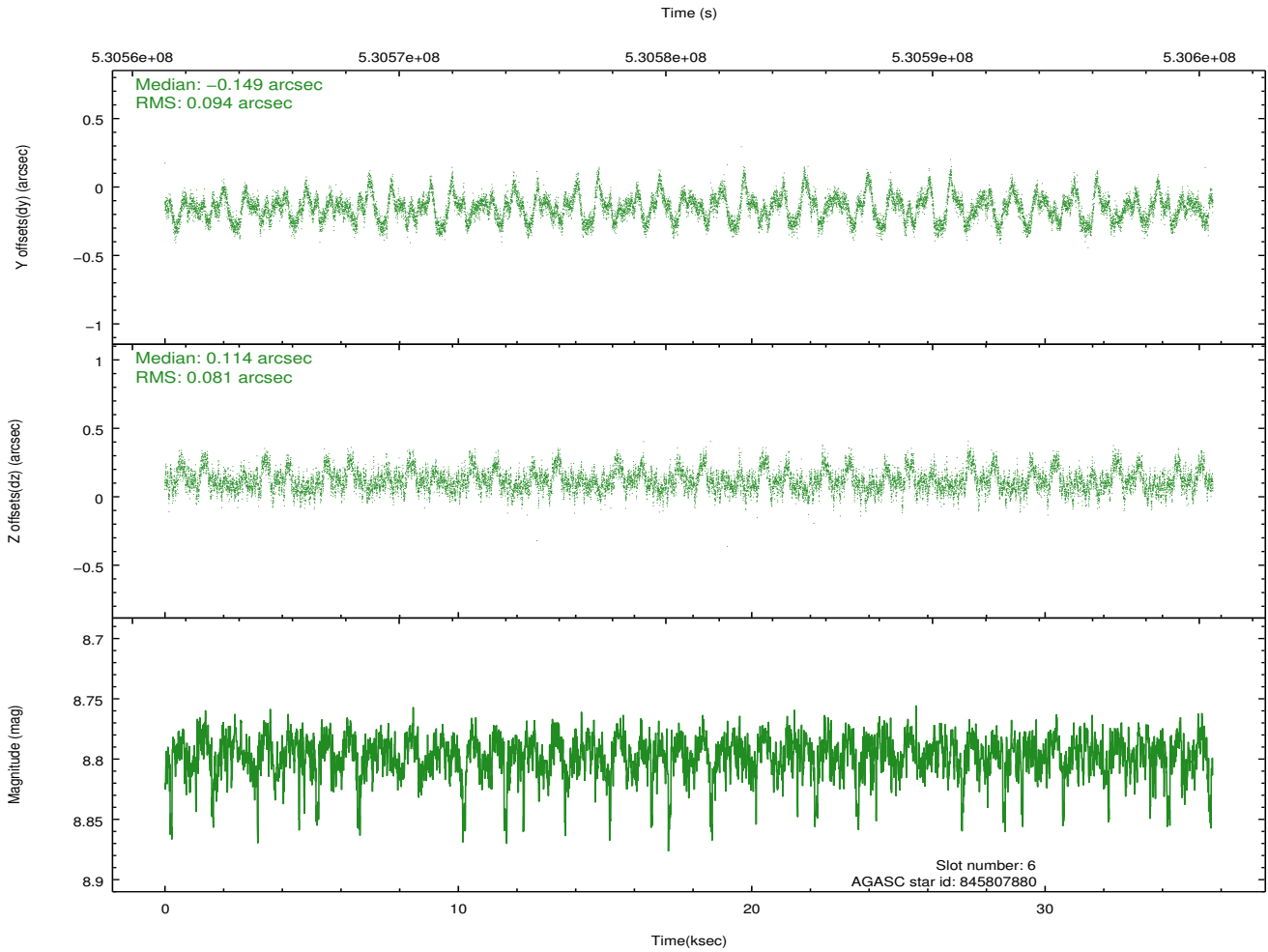
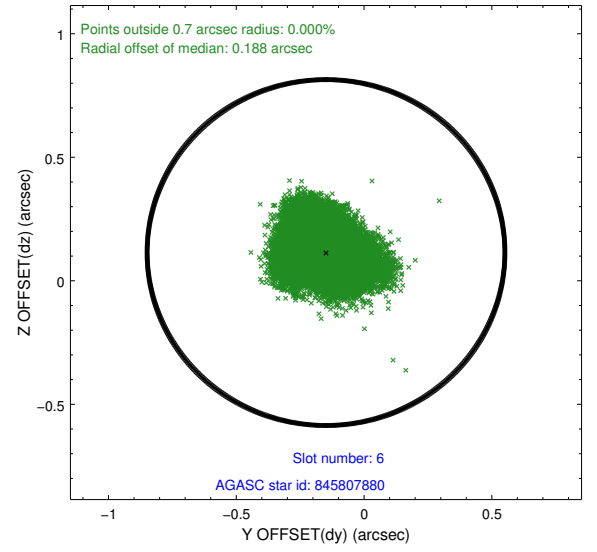
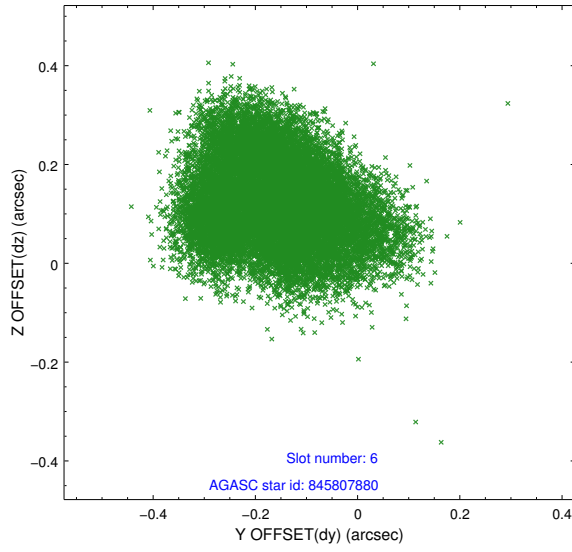
2.4.2 Slot 4



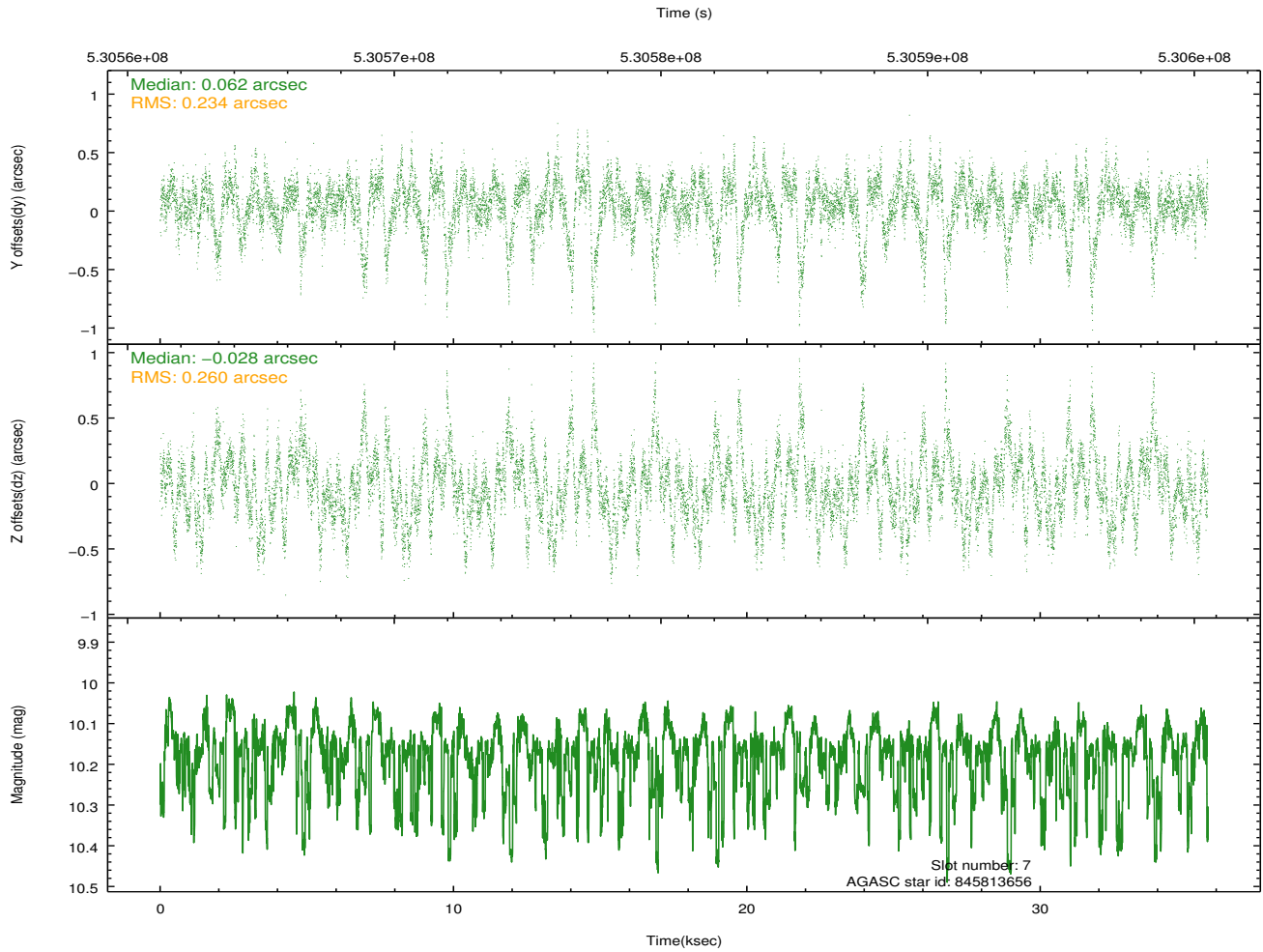
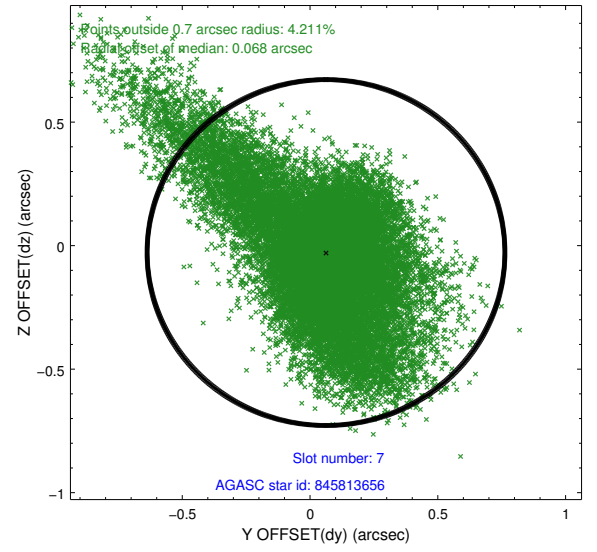
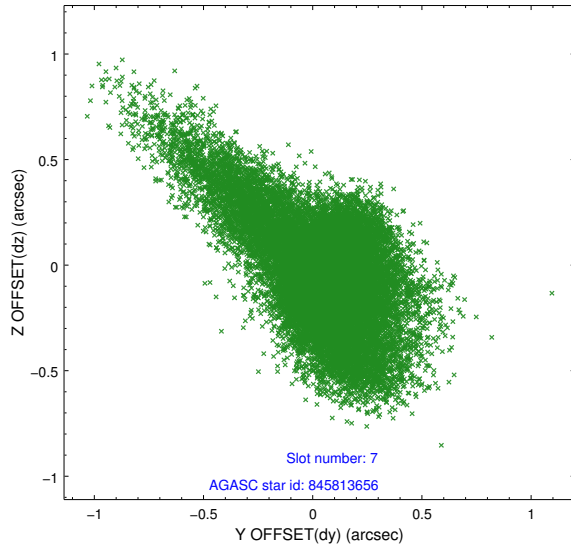
2.4.3 Slot 5



2.4.4 Slot 6

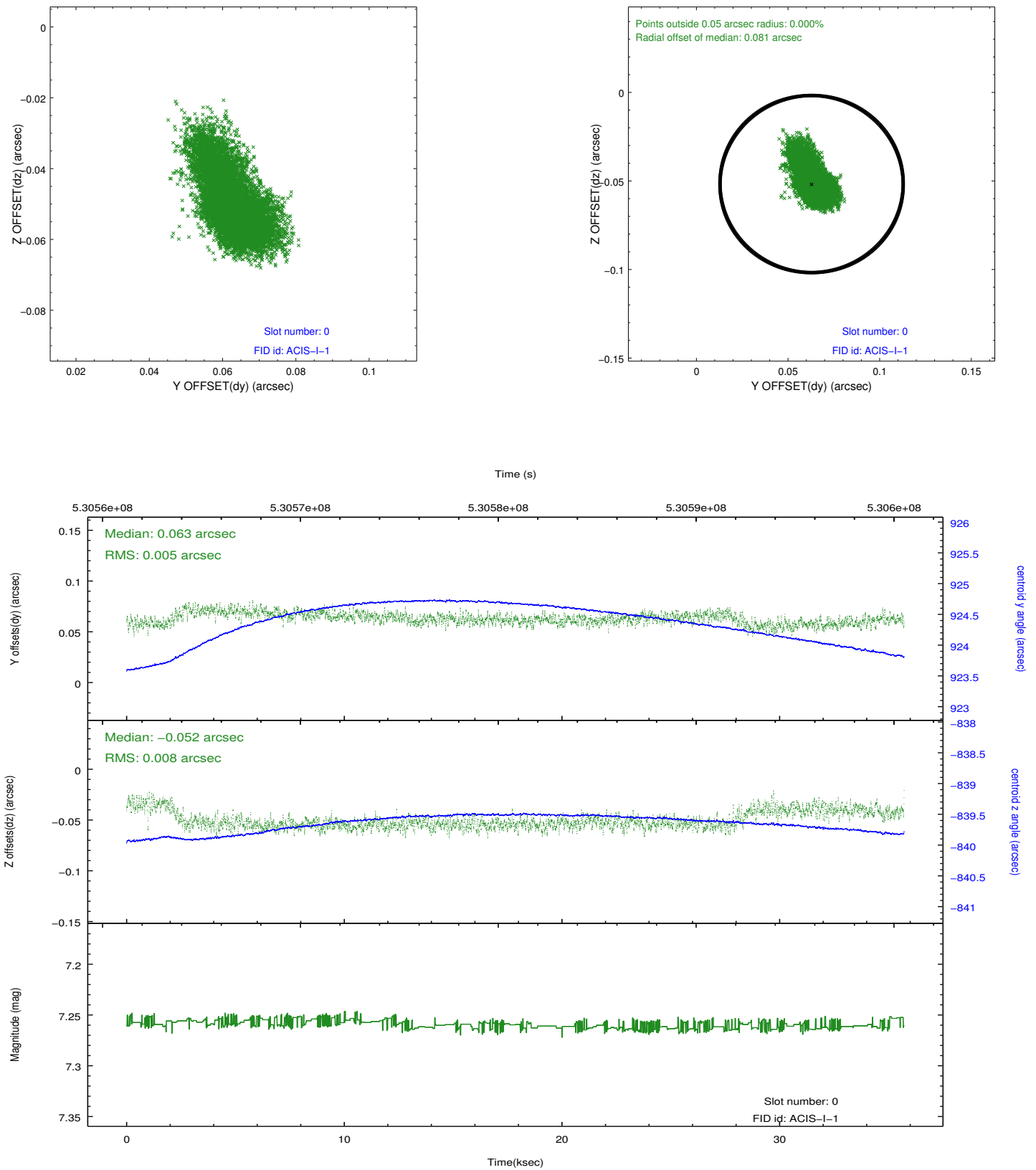


2.4.5 Slot 7

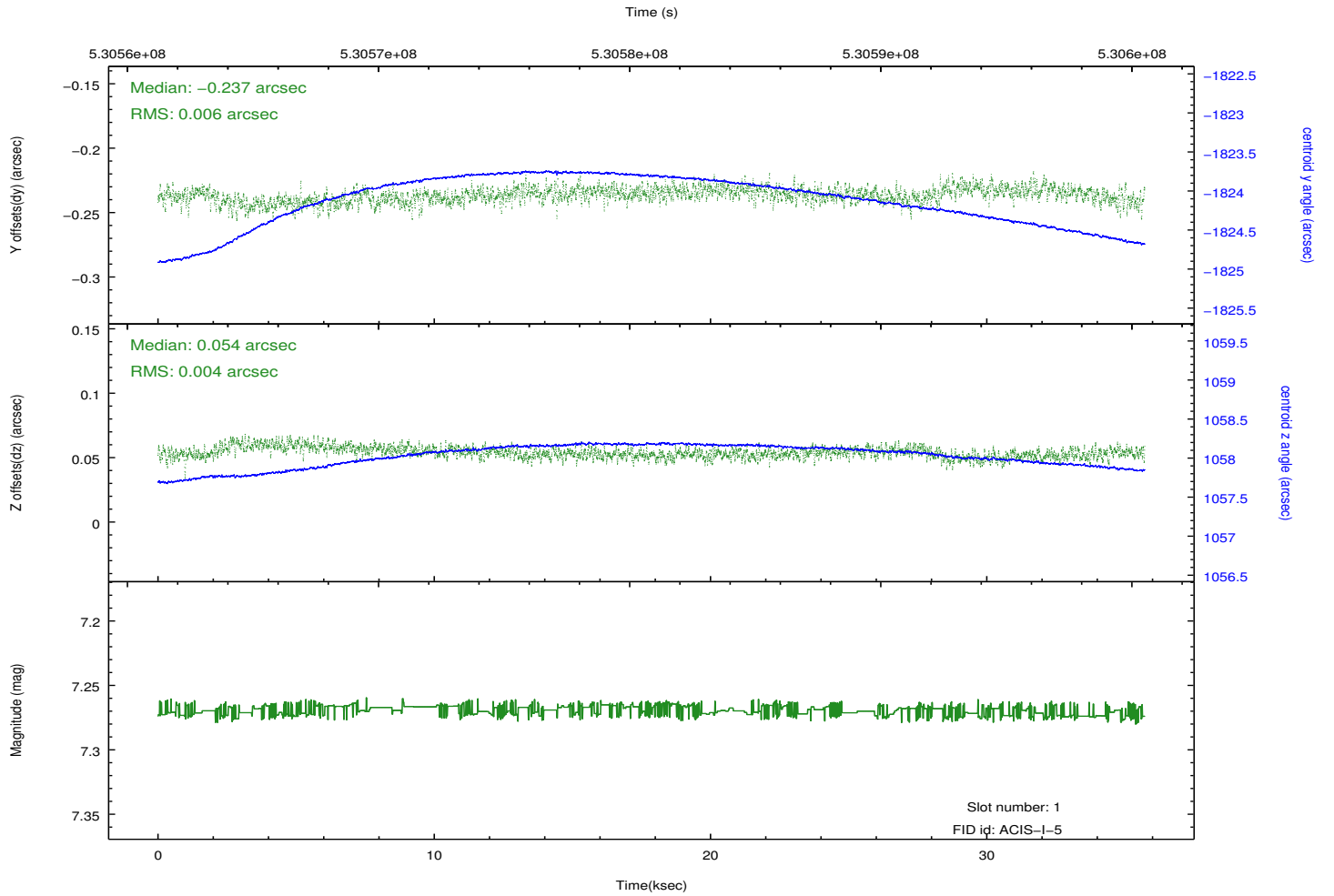
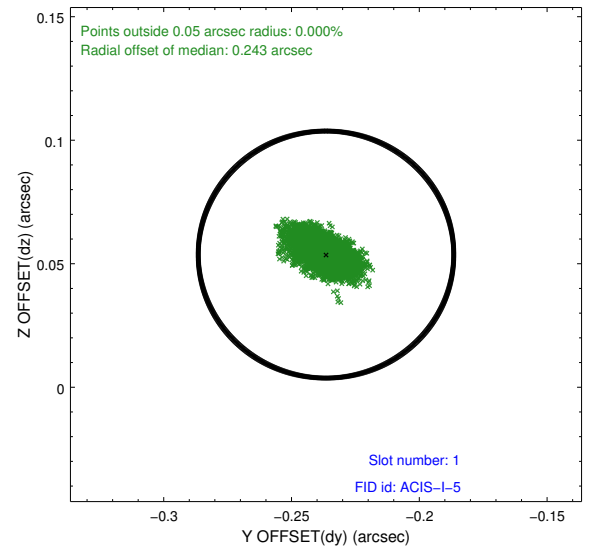
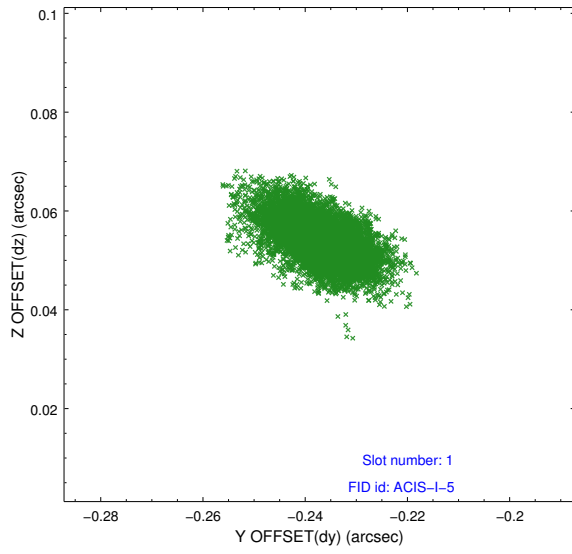


2.5 FID Slots

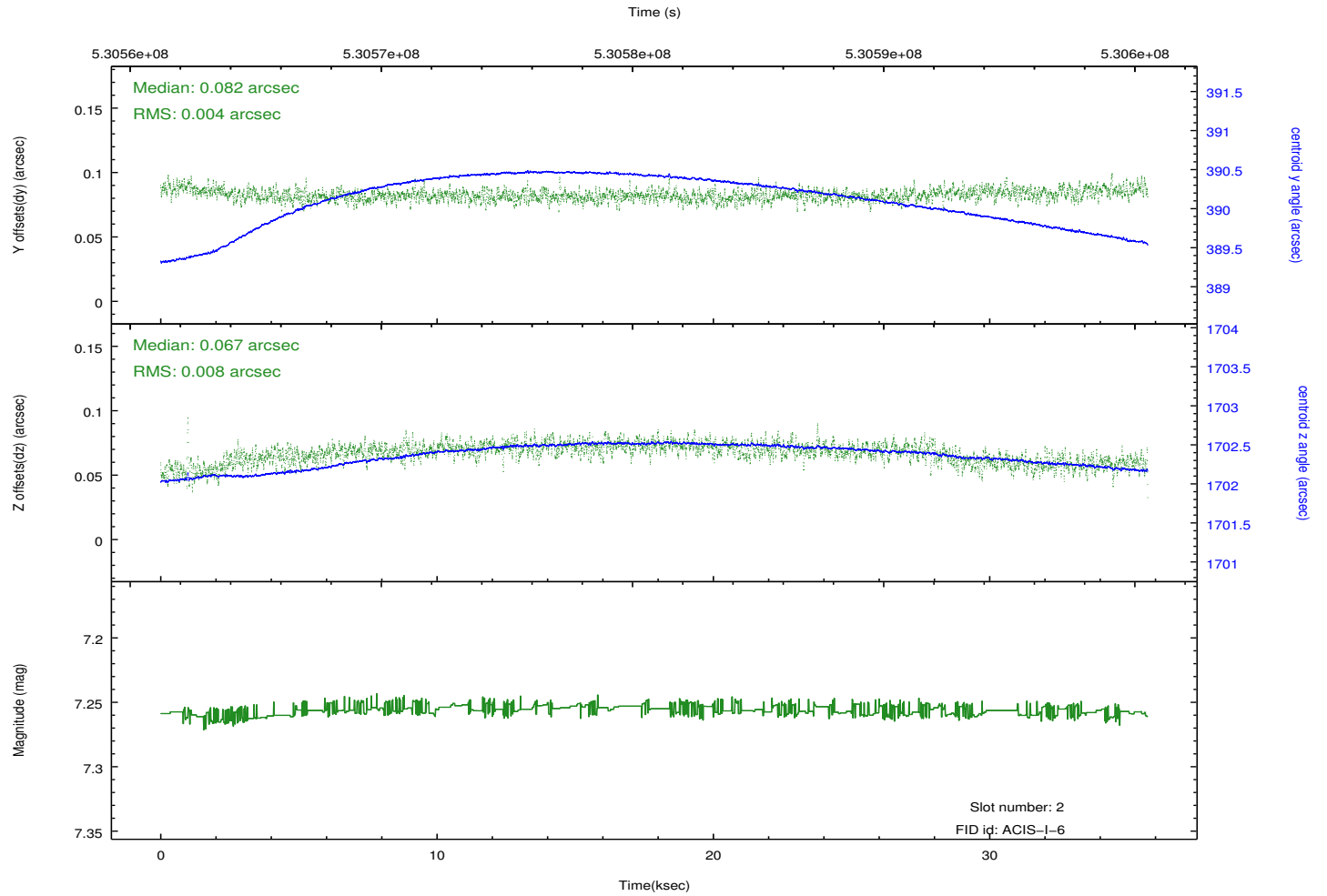
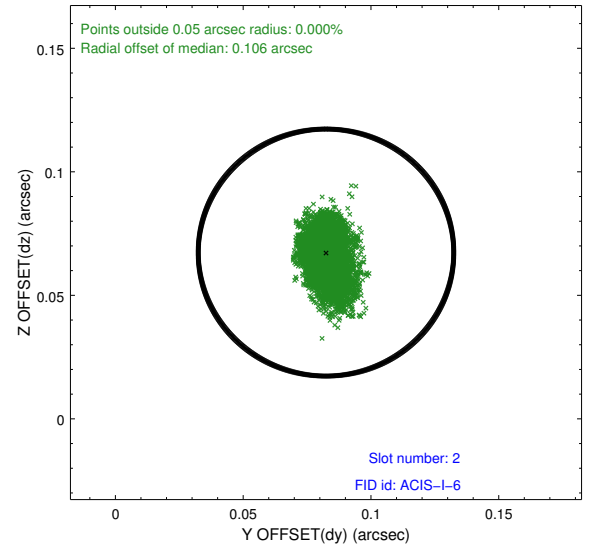
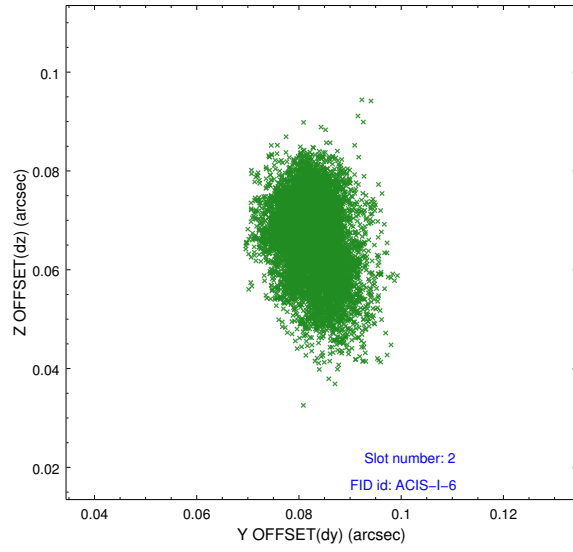
2.5.1 Slot 0



2.5.2 Slot 1



2.5.3 Slot 2



A Summary

A.1 Status

V&V Scientist	Jen Lauer
V&V Date (YYYY-MM-DD)	2014.10.27
V&V Edition	1
V&V Disposition and Status	OK
V&V Charge Time	35.085800269842

A.2 Comments