

V&V Reference Report

L2 ASCDS Version : 10.2.4

Observation 17416 - L2 Version 1
Chandra X-Ray Center

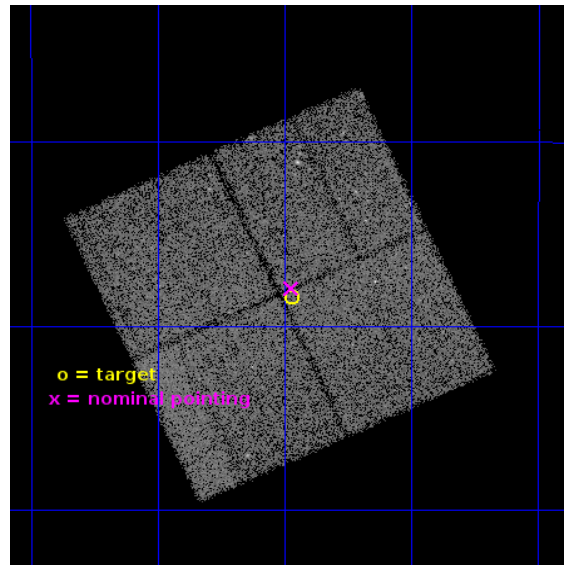
L2 Processing Date : Sep 29 2014

Contents

1	Front	2
2	OBI	3
2.1	OBI	3
2.1.1	Images	3
2.1.2	Bias	3
2.1.3	Parameters	4
2.1.4	Events	4
2.2	Compared Parameters	5
2.3	Aspect	6
2.4	Star Slots	9
2.4.1	Slot 3	9
2.4.2	Slot 4	10
2.4.3	Slot 5	11
2.4.4	Slot 6	12
2.4.5	Slot 7	13
2.5	FID Slots	14
2.5.1	Slot 0	14
2.5.2	Slot 1	15
2.5.3	Slot 2	16
A	Summary	17
A.1	Status	17
A.2	Comments	17

1 Front

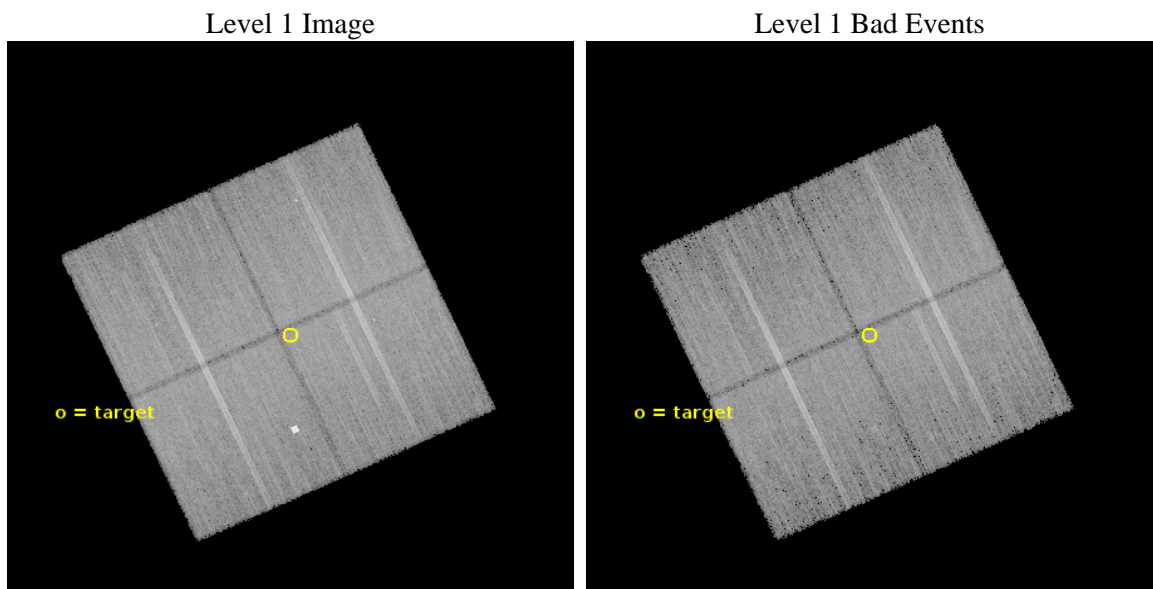
seq_num	901115	Sequence number
obs_id	17416	Observation id
title	The Chandra Deep Field-South: A Peerless Ultradeep Survey for Exploring the Distant X-ray Universe	Proposal title
observer	Prof. W.N. Brandt	Principal investigator
object	Chandra Deep Field-South	Source name
dtcycle	0	
cycle	P	events from which exps? Prim/Second/Both
ra_targ	53.117083	Observer's specified target RA [deg]
dec_targ	-27.807333	Observer's specified target Dec [deg]
ra_nom	53.118278503182	Nominal RA [deg]
dec_nom	-27.799208104976	Nominal Dec [deg]
roll_nom	65.209248074251	Nominal Roll [deg]
revision	1	Processing version of data
ontime	53093.659388125	Sum of GTIs [s]
livetime	52399.951641236	Livetime [s]
ontime0	53093.659388006	Sum of GTIs [s]
ontime1	53096.800408363	Sum of GTIs [s]
ontime2	53093.659378171	Sum of GTIs [s]
ontime3	53093.659388125	Sum of GTIs [s]
l2events	108111	Number of level 2 events



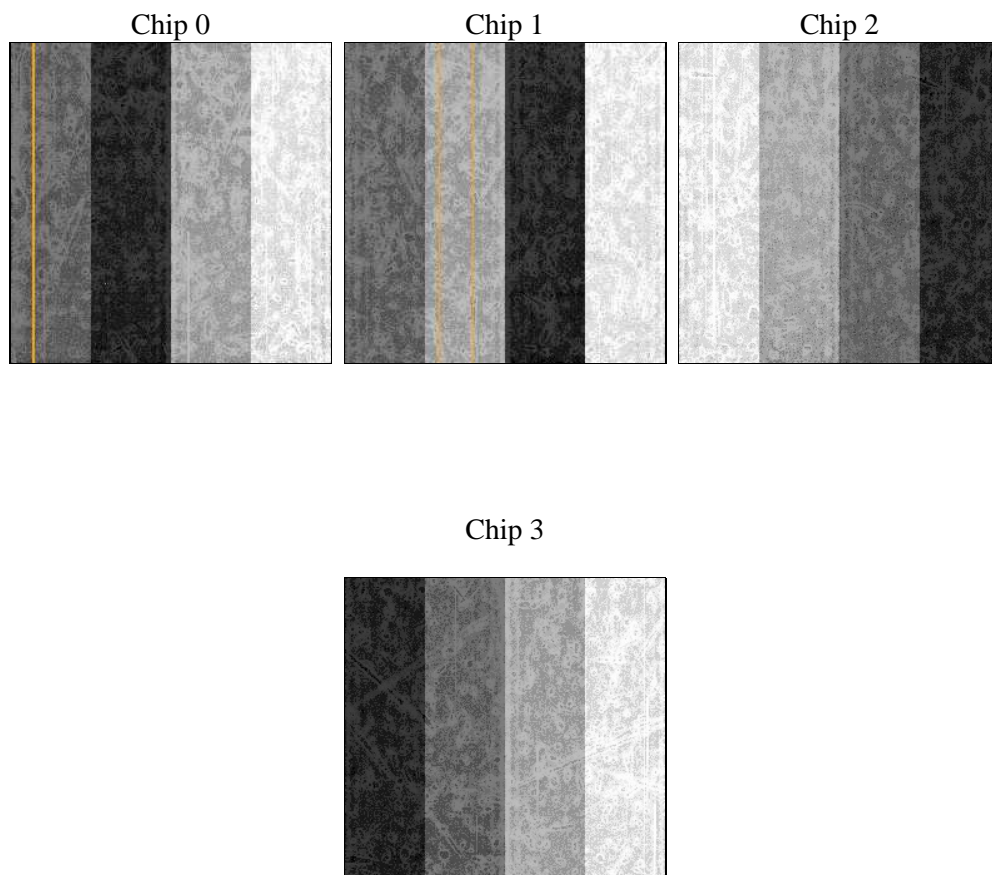
2 OBI

2.1 OBI

2.1.1 Images



2.1.2 Bias



2.1.3 Parameters

obi_num	0	Obi number	sched_exp_time	53008.000000	[s] Scheduled observation exposure time
ascdsver	10.2.4	Processing system revision	ontime	53093.659388125	Sum of GTIs [s]
caldsver	4.6.3	 	ontime0	53093.659388006	Sum of GTIs [s]
date	2014-09-29T06:57:09	Date and time of file creation	ontime1	53096.800408363	Sum of GTIs [s]
revision	1	Processing version of data	ontime2	53093.659378171	Sum of GTIs [s]
			ontime3	53093.659388125	Sum of GTIs [s]
			l1events	1044109	Number of level 1 events

2.1.4 Events

	ccd 0	ccd 1	ccd 2	ccd 3
level 1 events	249216	259352	270694	264847
rejected events	216916	217035	238993	234713
rejected %	87%	83%	88%	88%

	ccd 0	ccd 1	ccd 2	ccd 3
grade 0 events	10813	18989	11616	10359
	4%	7%	4%	3%
grade 1 events	143	170	140	148
	0%	0%	0%	0%
grade 2 events	8189	8713	7566	6869
	3%	3%	2%	2%
grade 3 events	3419	3537	3166	3255
	1%	1%	1%	1%
grade 4 events	3133	3442	3165	3207
	1%	1%	1%	1%
grade 5 events	12792	13653	12120	14509
	5%	5%	4%	5%
grade 6 events	6748	7640	6190	6445
	2%	2%	2%	2%
grade 7 events	203979	203208	226731	220055
	81%	78%	83%	83%

2.2 Compared Parameters

Parameter	Planned	Actual	Parameter	Planned	Actual
Instrument	ACIS	ACIS	Obspar format version number	7	7
Detector	ACIS-0123	ACIS-0123	Obspar file type	PREDICTED	ACTUAL
Grating	NONE	NONE	Obspar update status	NONE	UPDATED
Data mode	VFAINT	VFAINT	Number of optional ACIS chips dropped	0	0
Observation mode	POINTING	POINTING	On-chip summing requested	N	N
[deg] Pointing RA	53.121220	53.1182785031822	Subarray requested	NONE	NONE
[deg] Pointing Dec	-27.826695	-27.79920810497609	Alternating exposures requested	N	N
[deg] Pointing Roll	65.001928	65.20924807425135	[s] Primary exposure time	0.000000	3.1
[mm] SIM focus pos	-0.782348	-0.7809083437167272			
[mm] SIM defocus	0	0.001439871863259334			
[mm] SIM translation stage pos	-233.592463	-233.5874344608287			
[mm] SIM translation stage offset	0	-0.005018542100998502			
[s] Observation start time (MET)	528276059.184000	528274726.08404			
Observation start date	2014-09-28T07:19:52	2014-09-28T06:58:46			
[s] Observation end time (MET)	528329067.184000	528329588.69959			
Observation end date	2014-09-28T22:03:20	2014-09-28T22:13:08			
Read mode	TIMED	TIMED			

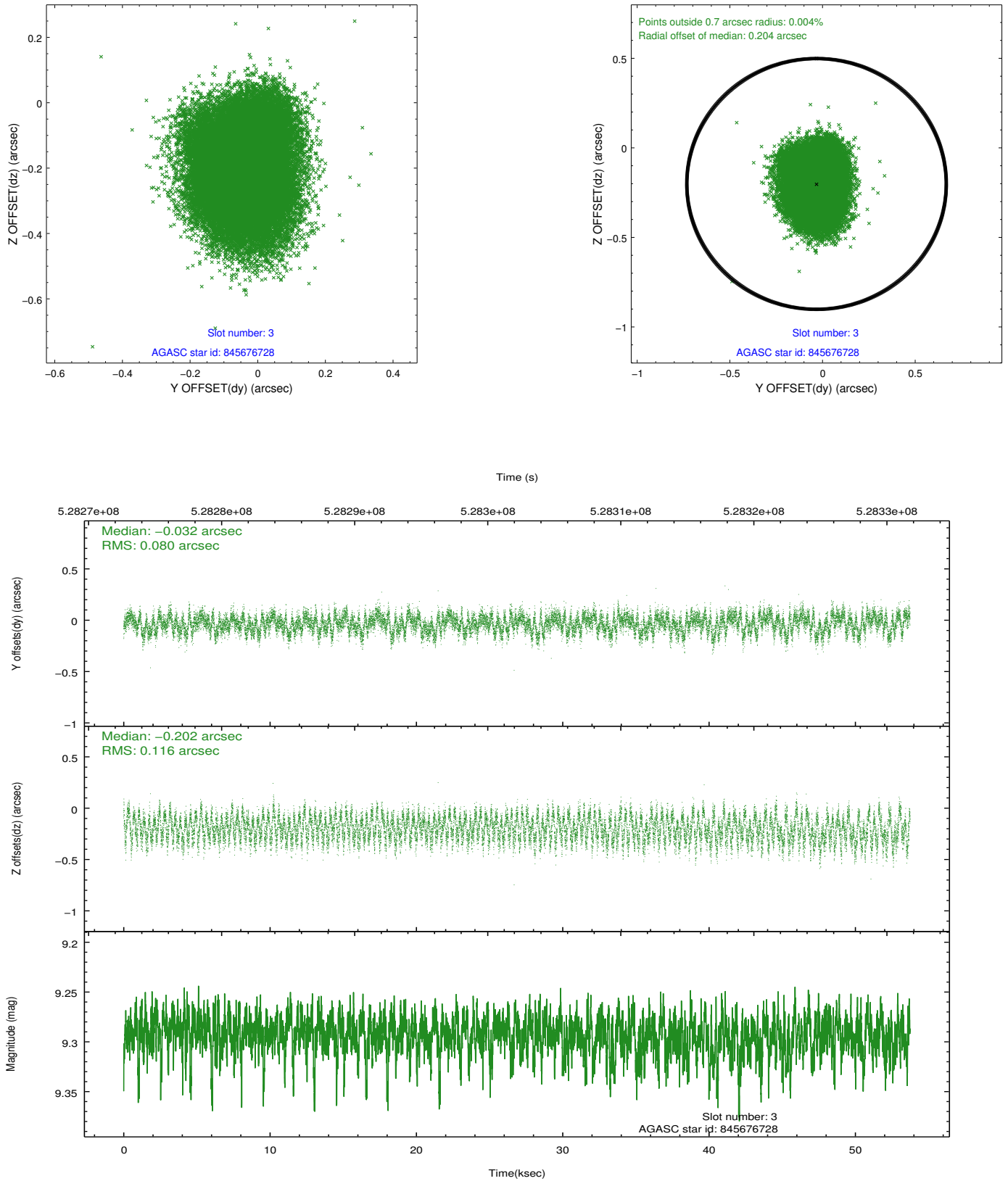
2.3 Aspect

Slot Statistics

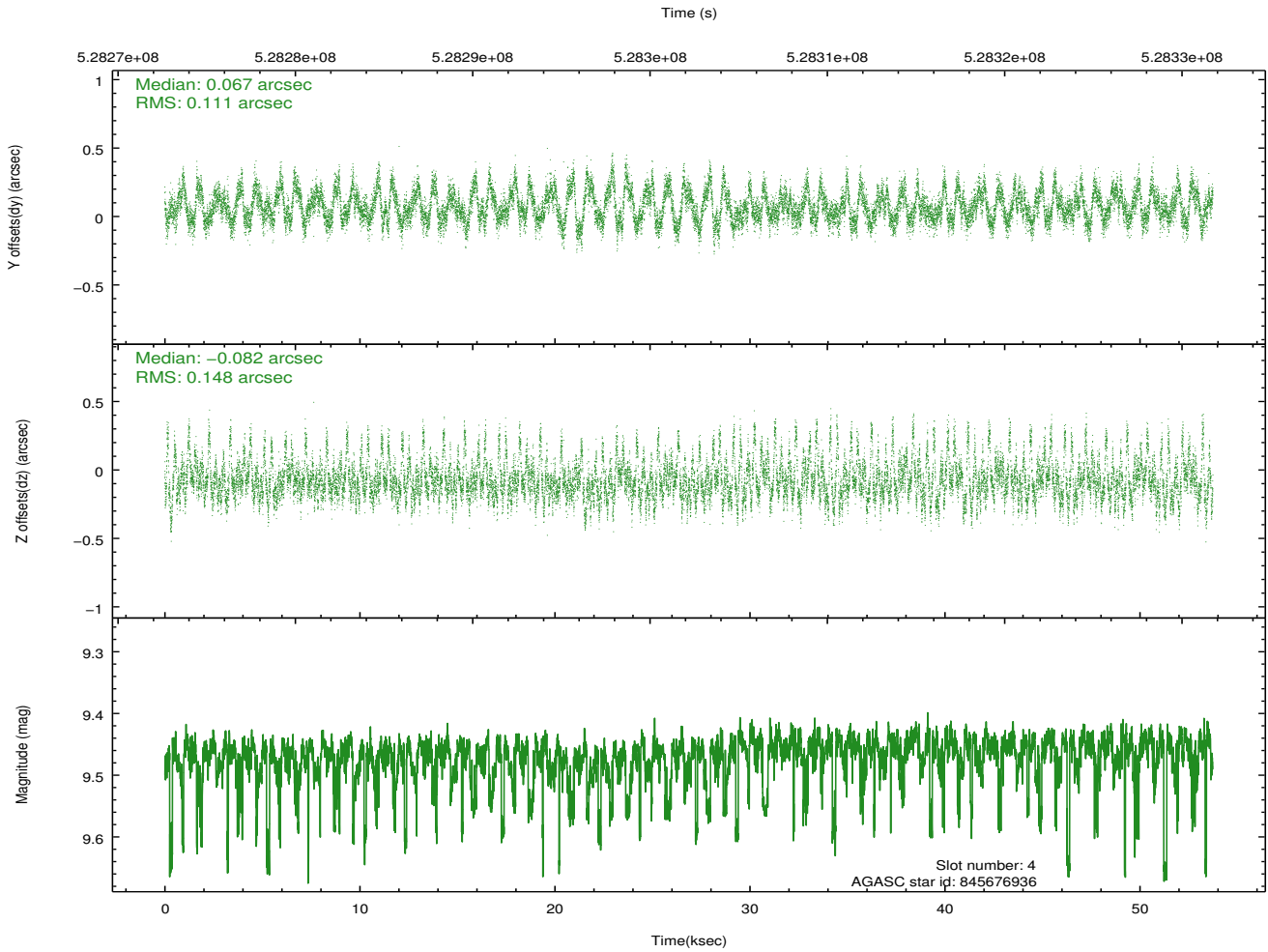
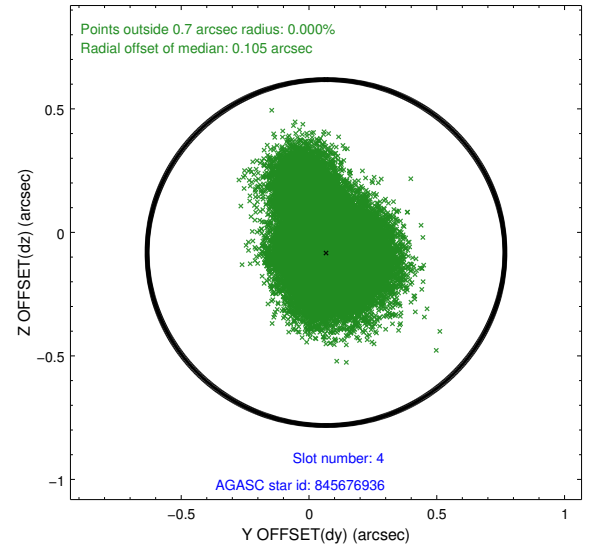
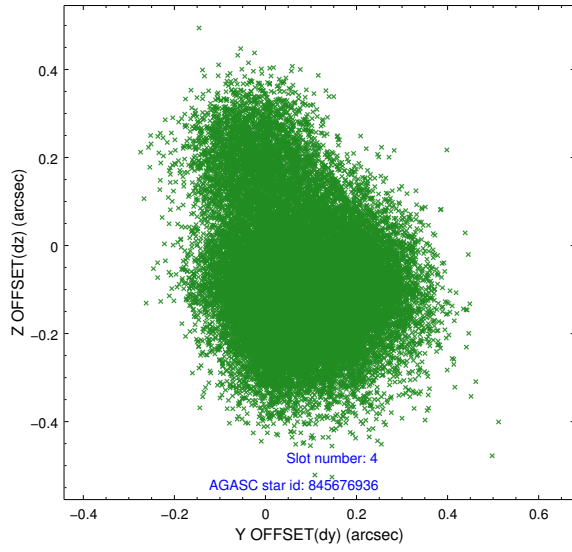
slot	status	id	mag	n_pts	med_dy	med_dz	dr1	dr2	ra	dec	mean_y	mean_z
0	FID	ACIS-I-1	7.11	13108	0.072	-0.013	0.036	0.064	0.000000	0.000000	919.93	-841.15
1	FID	ACIS-I-5	7.09	13109	-0.282	0.059	0.014	0.029	0.000000	0.000000	-1828.56	1056.38
2	FID	ACIS-I-6	7.10	13108	0.122	0.021	0.024	0.033	0.000000	0.000000	385.54	1700.84
3	GUIDE	845676728	9.29	26196	-0.032	-0.202	0.153	0.233	52.877179	-27.664318	200.47	951.89
4	GUIDE	845676936	9.47	26200	0.067	-0.082	0.191	0.335	52.843773	-27.880153	-547.65	718.01
5	GUIDE	845807880	8.78	26151	0.131	0.106	0.178	0.314	53.382027	-27.886093	156.71	-842.55
6	GUIDE	845808496	10.14	26141	-0.104	0.078	0.226	0.368	53.777917	-27.725281	1210.77	-1744.34
7	GUIDE	845808968	9.88	25214	-0.048	0.064	0.266	0.421	54.016598	-27.589085	1973.69	-2231.89

2.4 Star Slots

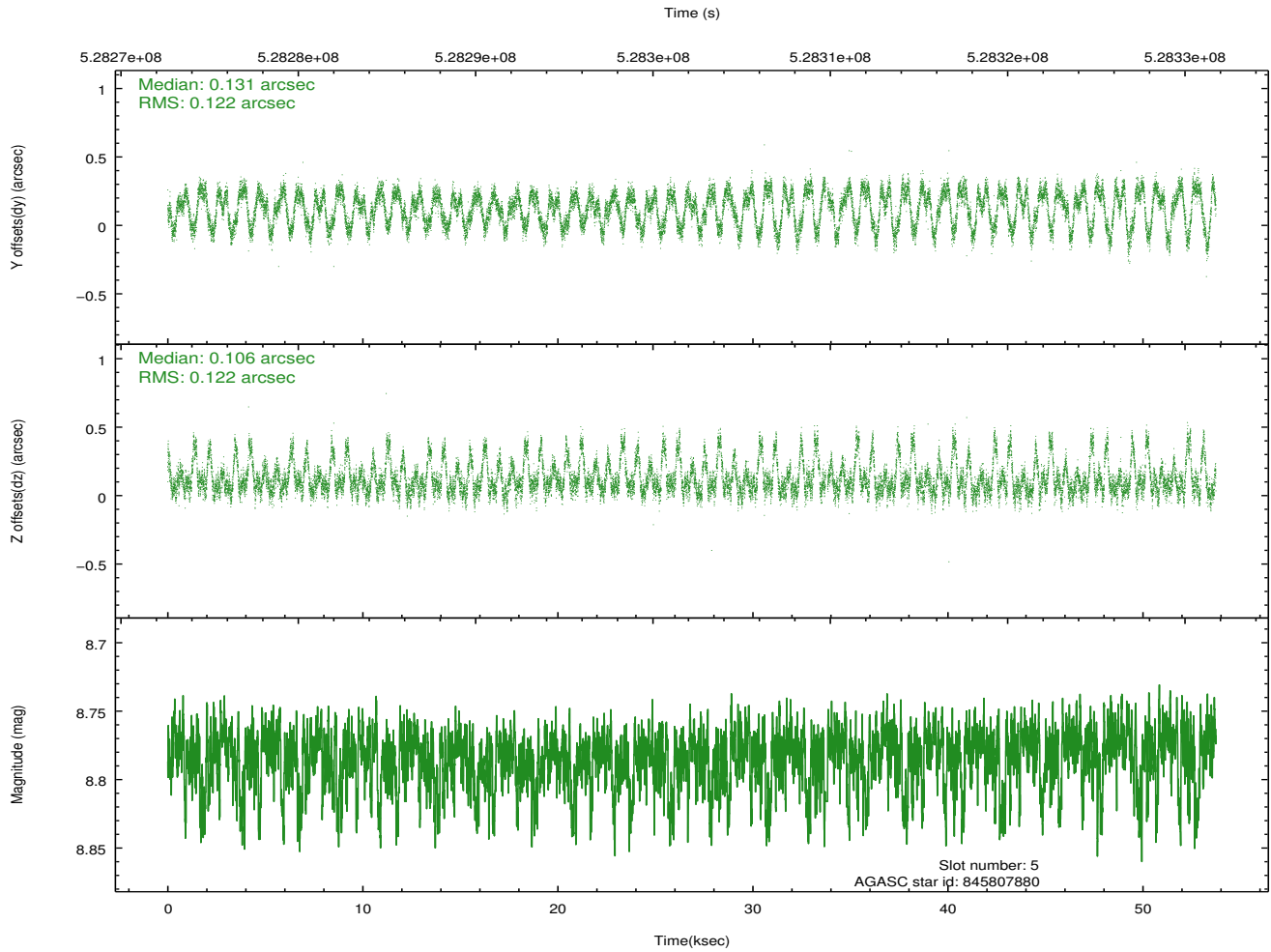
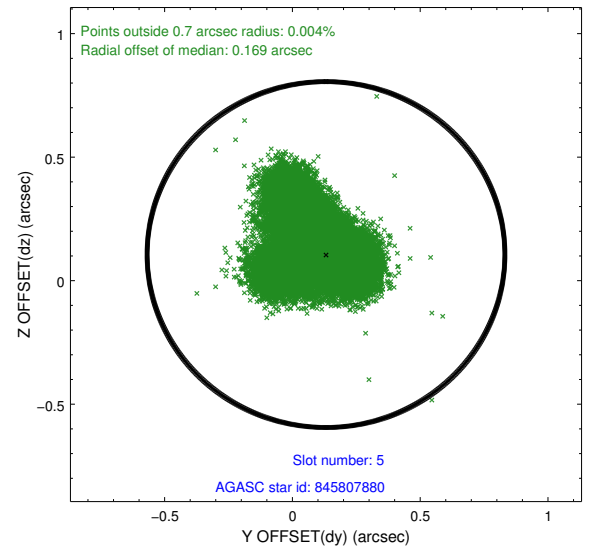
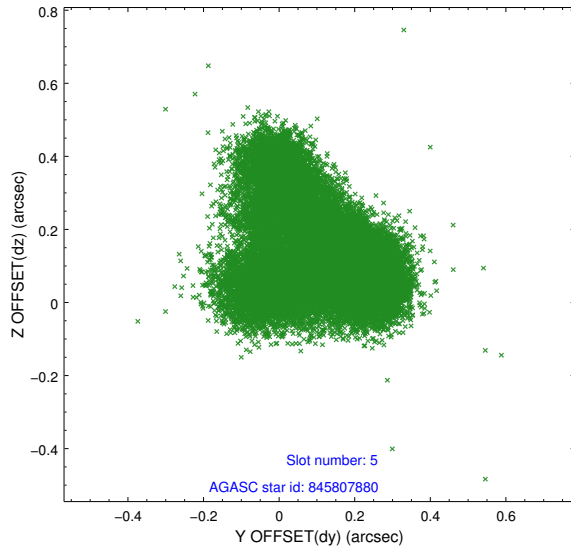
2.4.1 Slot 3



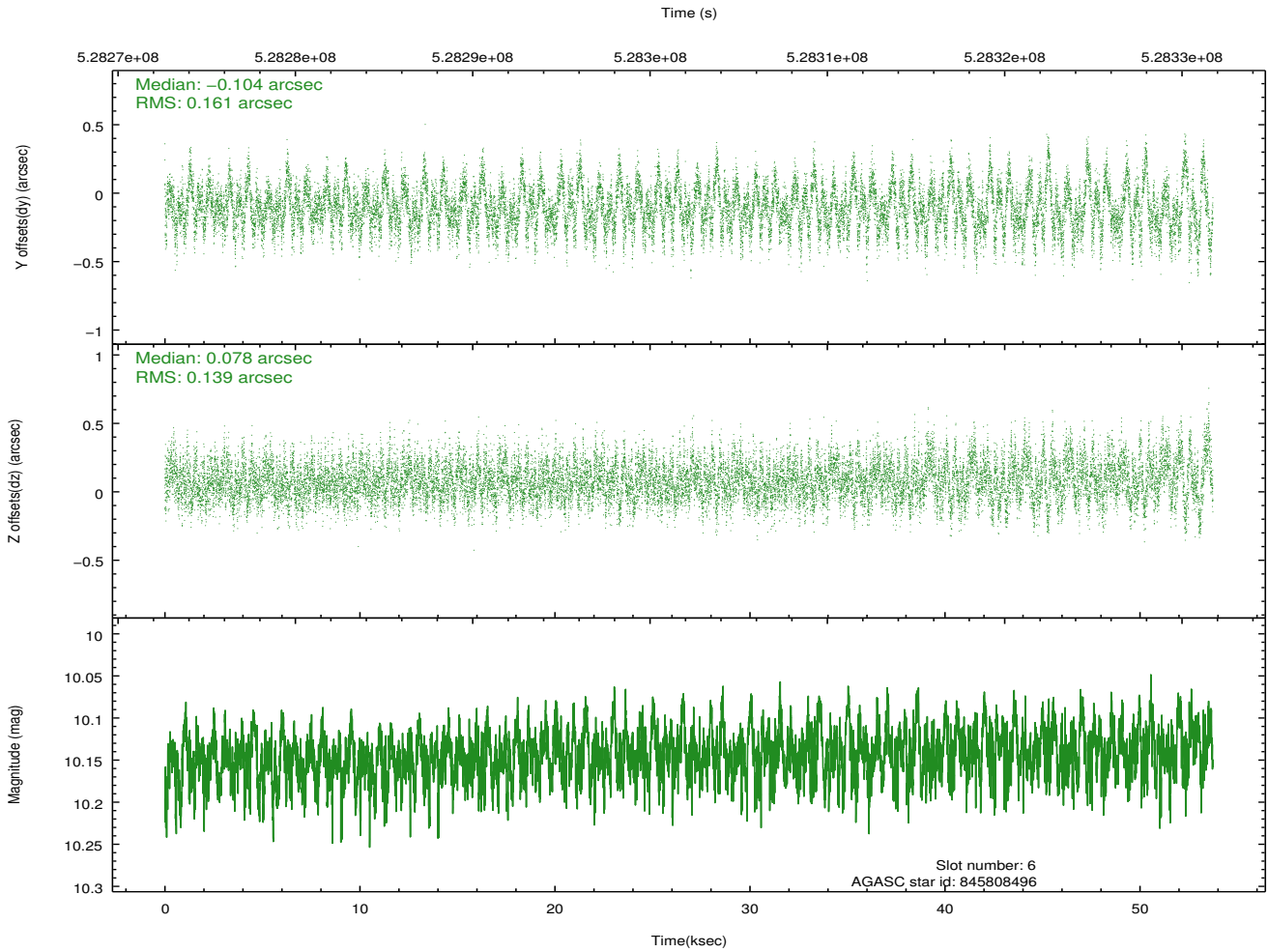
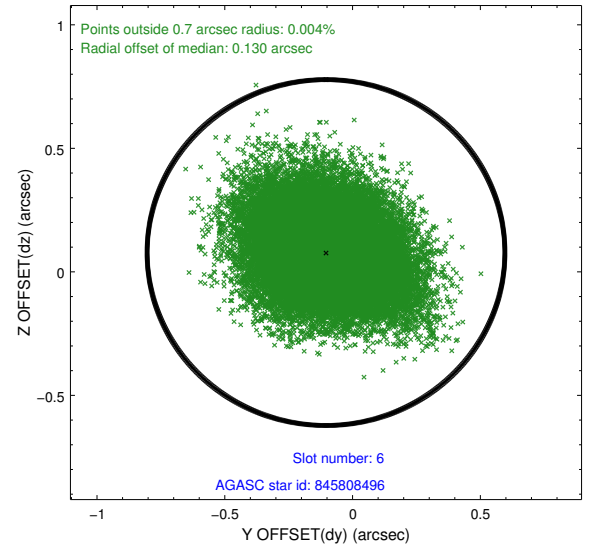
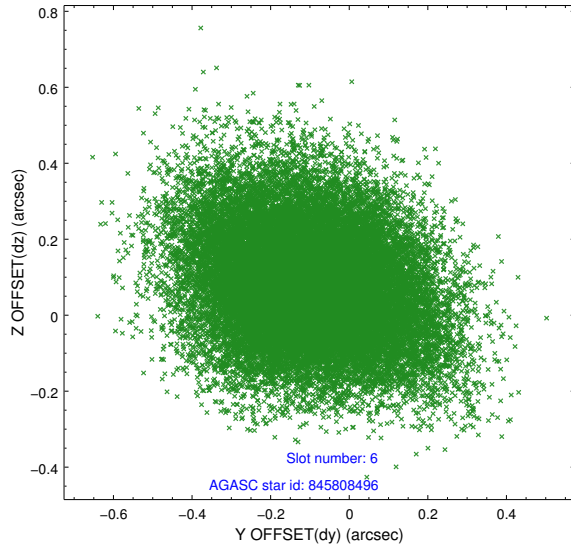
2.4.2 Slot 4



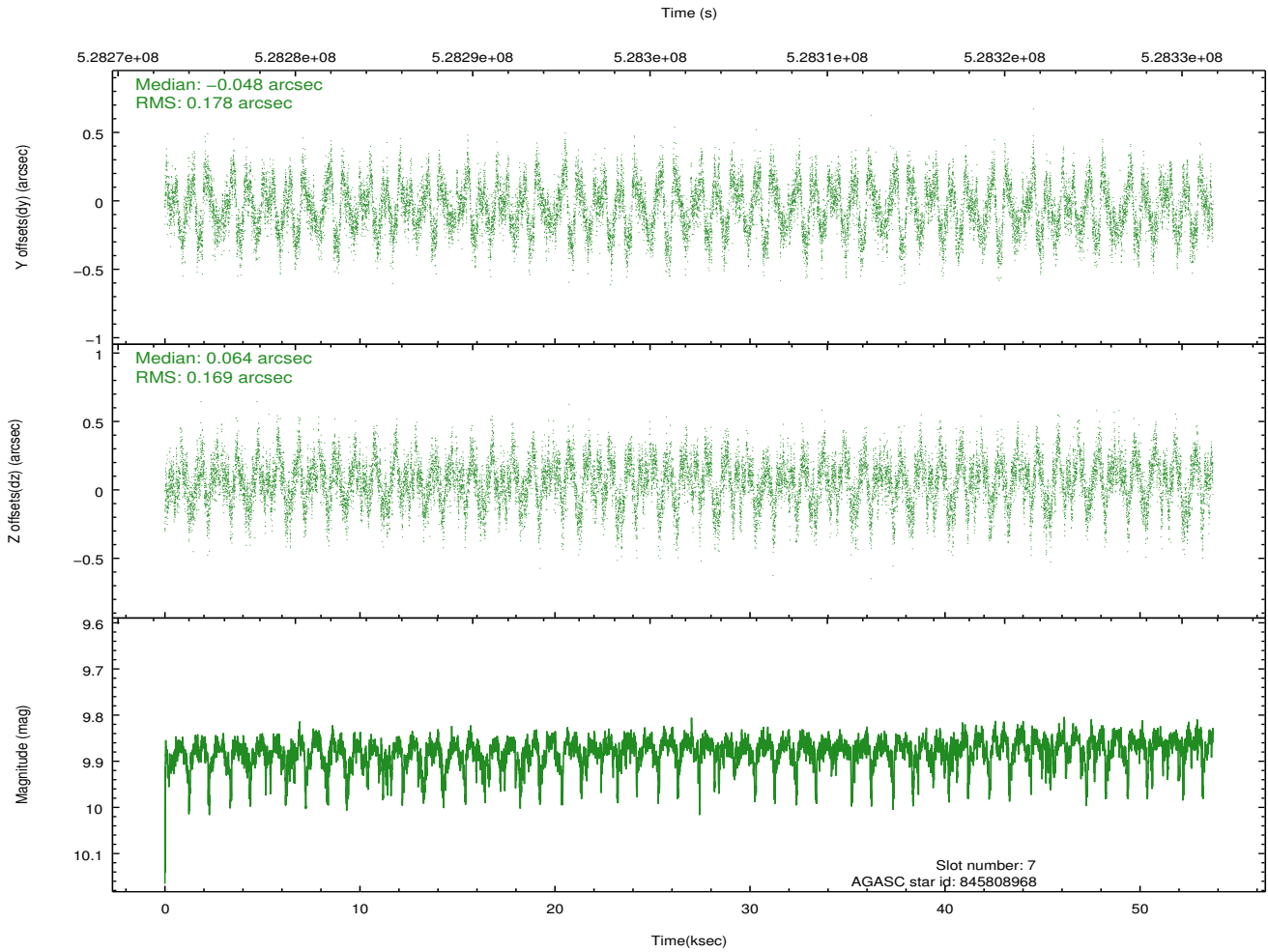
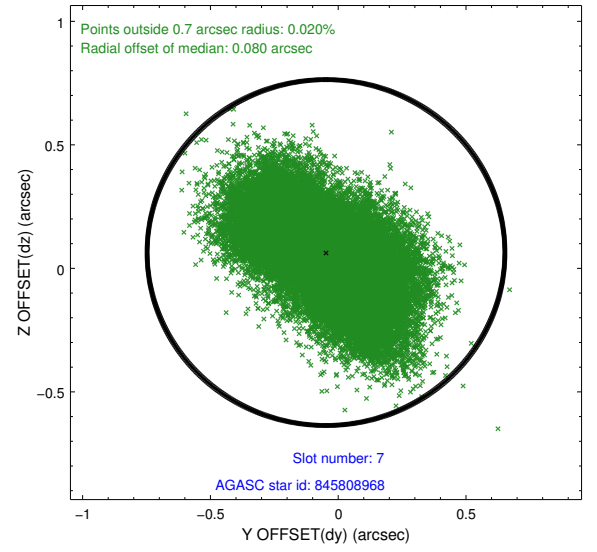
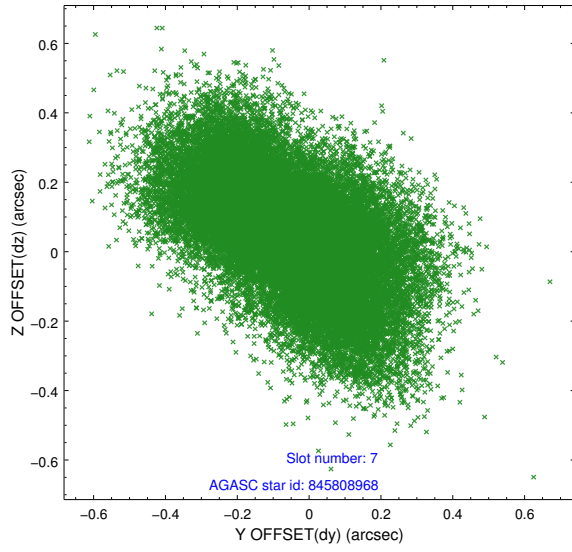
2.4.3 Slot 5



2.4.4 Slot 6

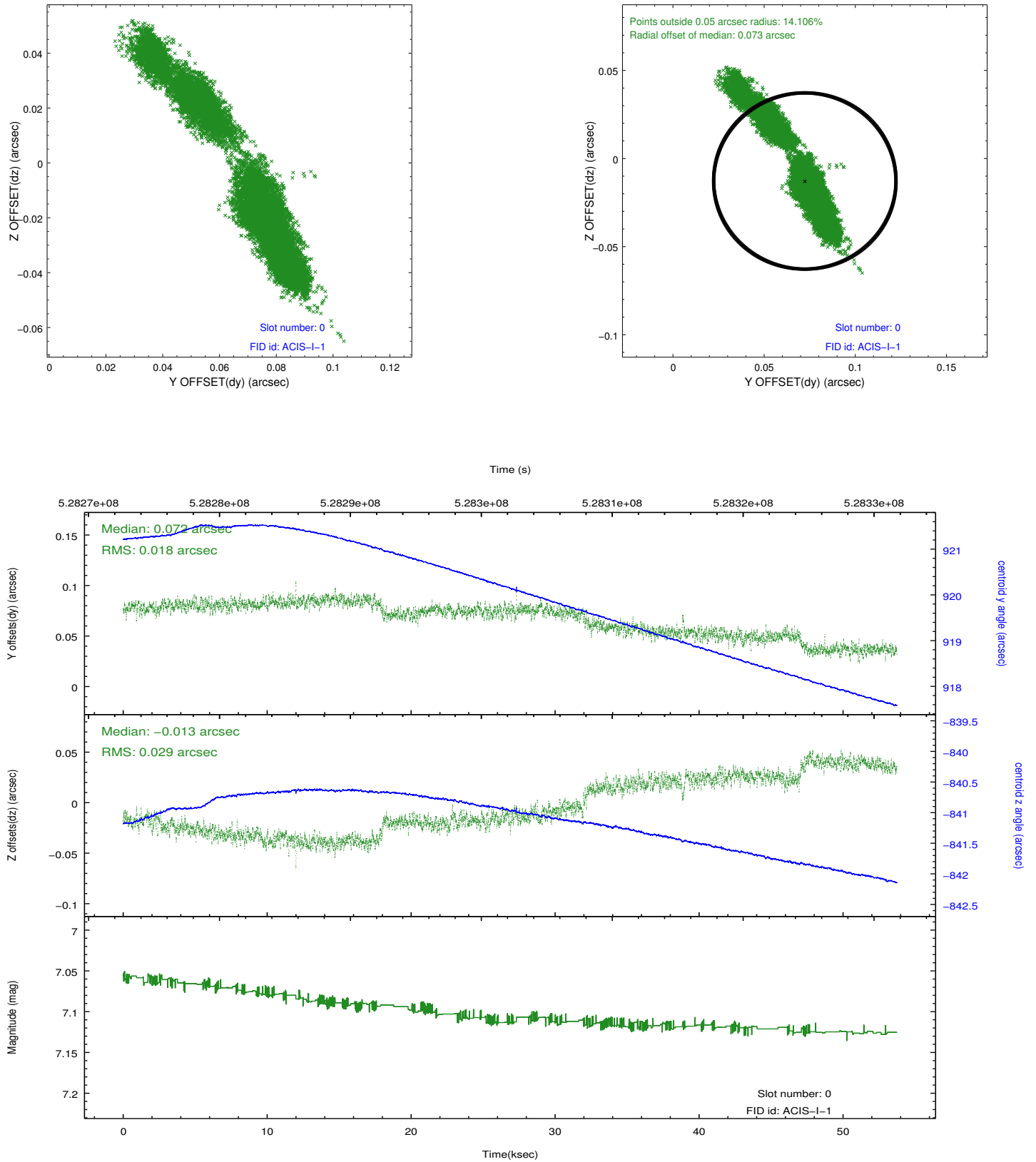


2.4.5 Slot 7

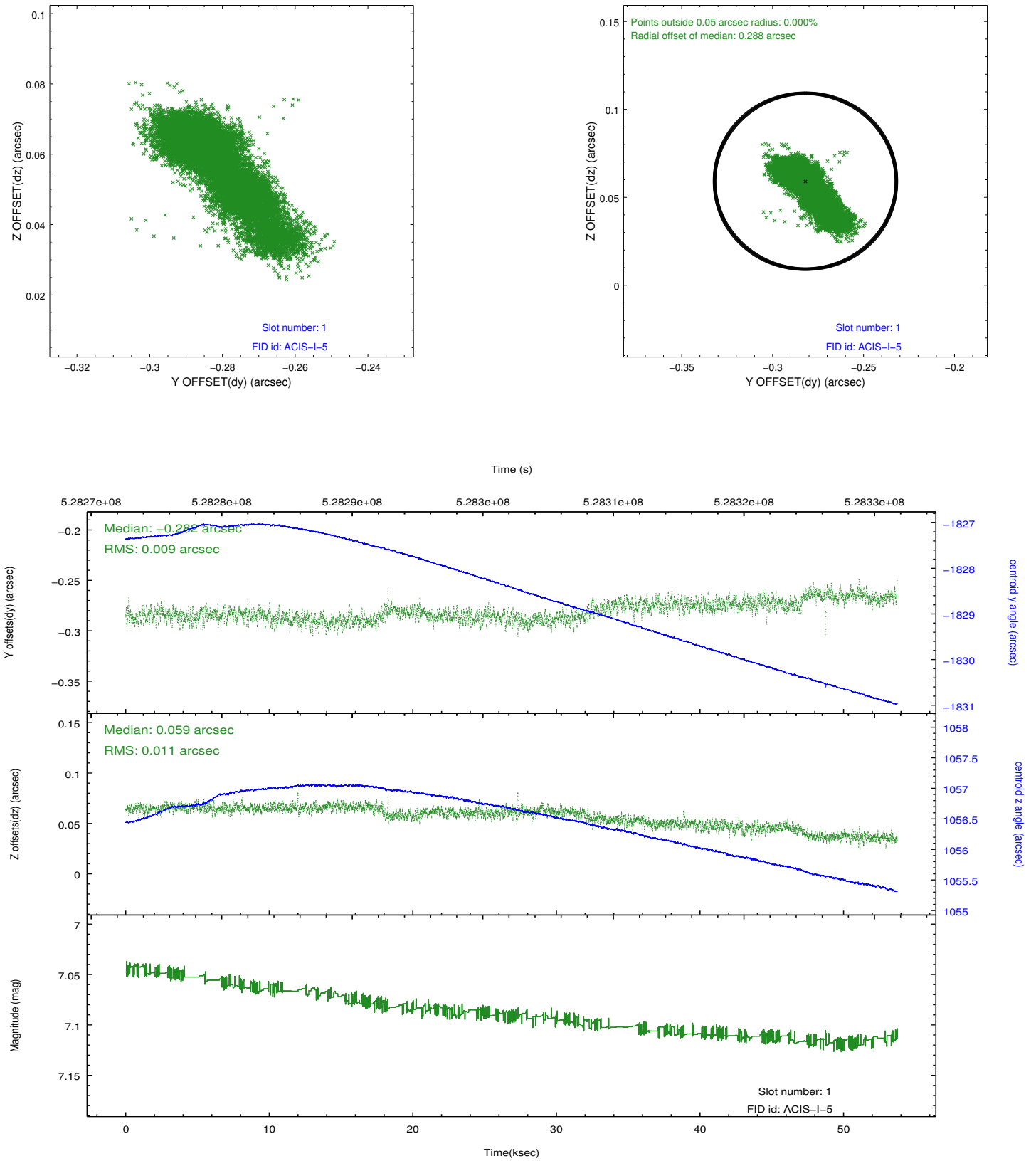


2.5 FID Slots

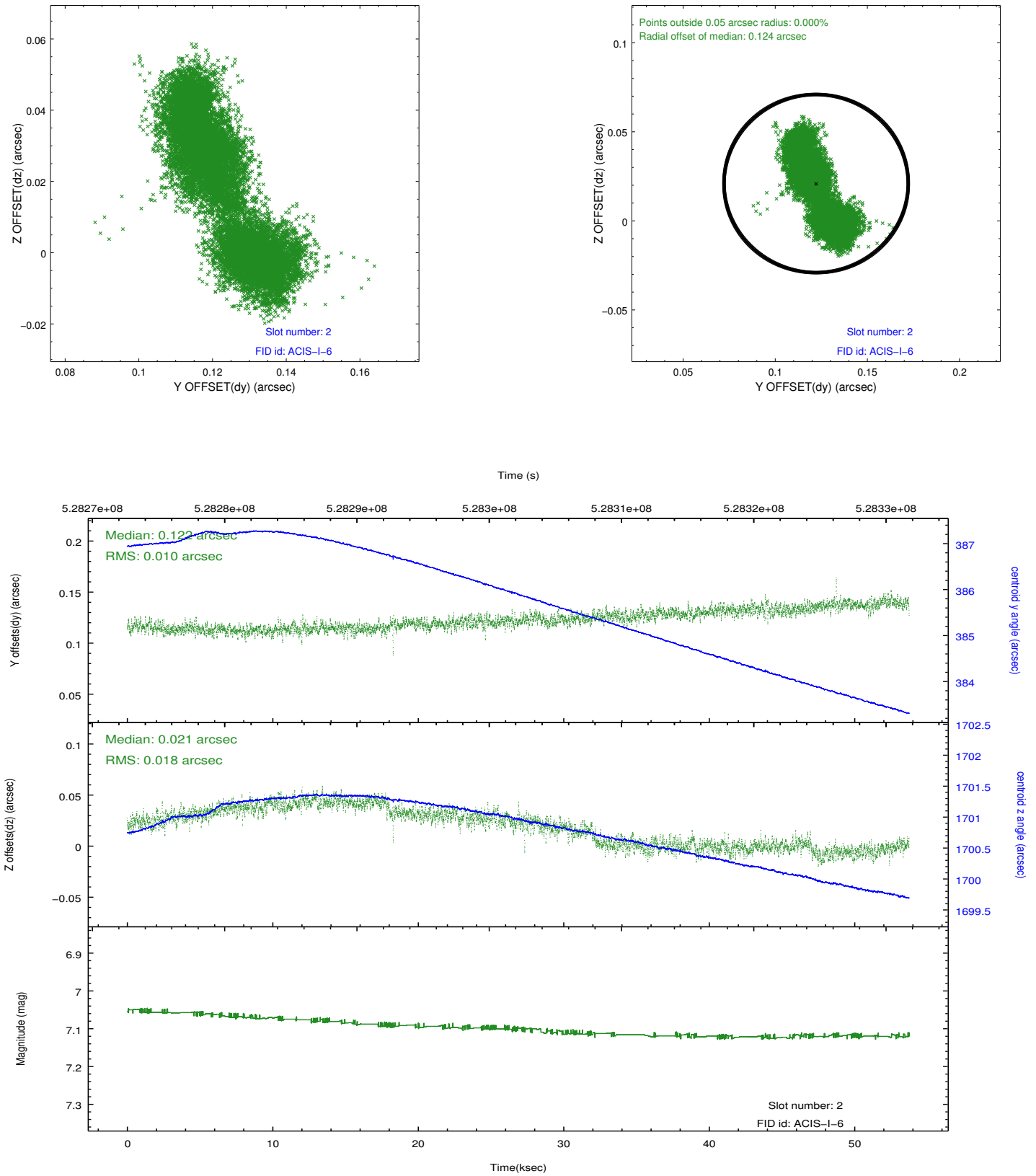
2.5.1 Slot 0



2.5.2 Slot 1



2.5.3 Slot 2



A Summary

A.1 Status

V&V Scientist	Joy Nichols
V&V Date (YYYY-MM-DD)	2014.09.29
V&V Edition	1
V&V Disposition and Status	OK
V&V Charge Time	53.093659388125

A.2 Comments