

V&V Reference Report

L2 ASCDS Version : 10.2.4

Observation 16281 - L2 Version 1
Chandra X-Ray Center

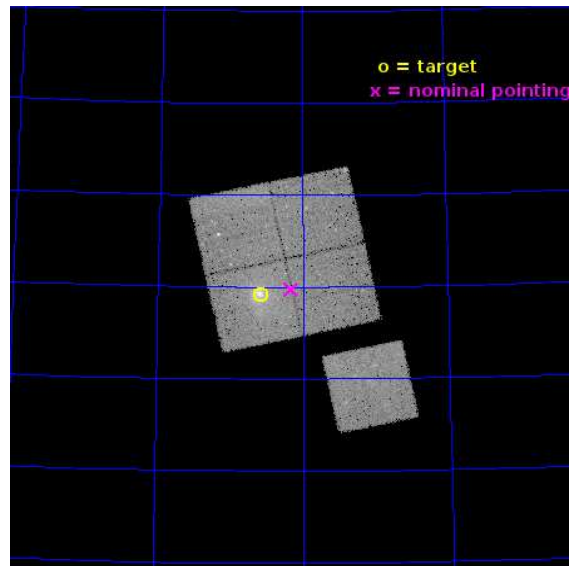
L2 Processing Date : Aug 15 2014

Contents

1	Front	2
2	OBI	3
2.1	OBI	3
2.1.1	Images	3
2.1.2	Bias	3
2.1.3	Parameters	4
2.1.4	Events	4
2.2	Compared Parameters	5
2.3	Aspect	6
2.4	Star Slots	9
2.4.1	Slot 3	9
2.4.2	Slot 4	10
2.4.3	Slot 5	11
2.4.4	Slot 6	12
2.4.5	Slot 7	13
2.5	FID Slots	14
2.5.1	Slot 0	14
2.5.2	Slot 1	15
2.5.3	Slot 2	16
A	Summary	17
A.1	Status	17
A.2	Comments	17

1 Front

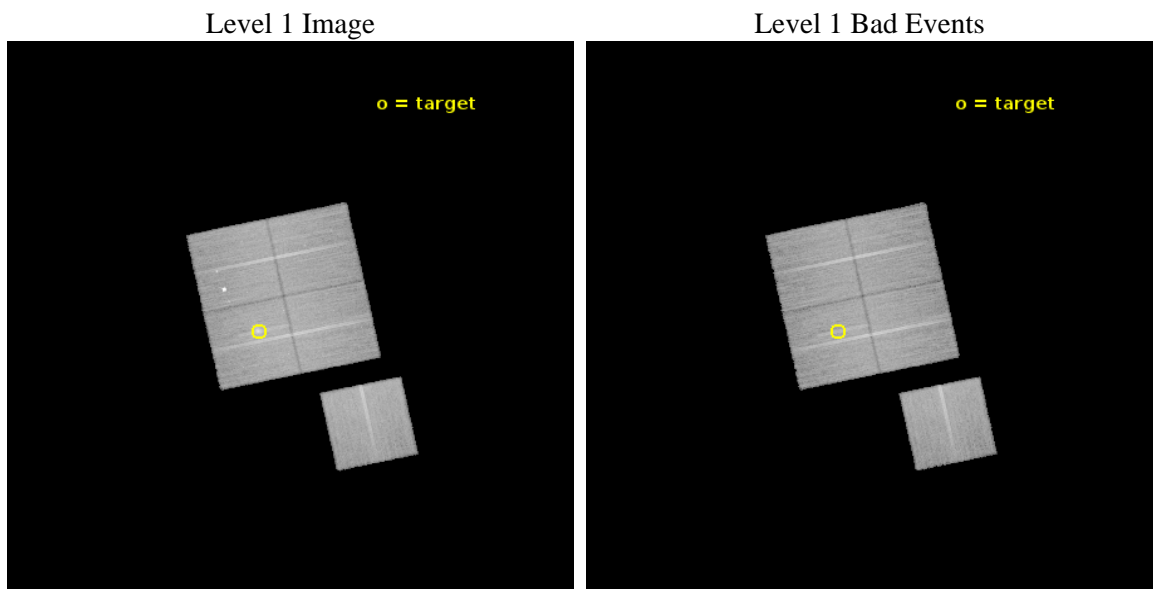
seq_num	801423	Sequence number
obs_id	16281	Observation id
title	Chandra observations of the Planck ESZ Cluster Sample	Proposal tit
observer	Dr. Stephen Murray	Principal investigator
object	G115.71+17.52	Source name
dtcycle	0	
cycle	P	events from which exps? Prim/Second/Both
ra_targ	336.614167	Observer's specified target RA [deg]
dec_targ	78.32	Observer's specified target Dec [deg]
ra_nom	336.34866730855	Nominal RA [deg]
dec_nom	78.329323999738	Nominal Dec [deg]
roll_nom	167.90256332787	Nominal Roll [deg]
revision	1	Processing version of data
ontime	45080.159376323	Sum of GTIs [s]
livetime	44491.153906541	Livetime [s]
ontime0	45080.159356415	Sum of GTIs [s]
ontime1	45080.159316301	Sum of GTIs [s]
ontime2	45083.300346732	Sum of GTIs [s]
ontime3	45080.159376323	Sum of GTIs [s]
ontime6	45083.300346732	Sum of GTIs [s]
l2events	124019	Number of level 2 events



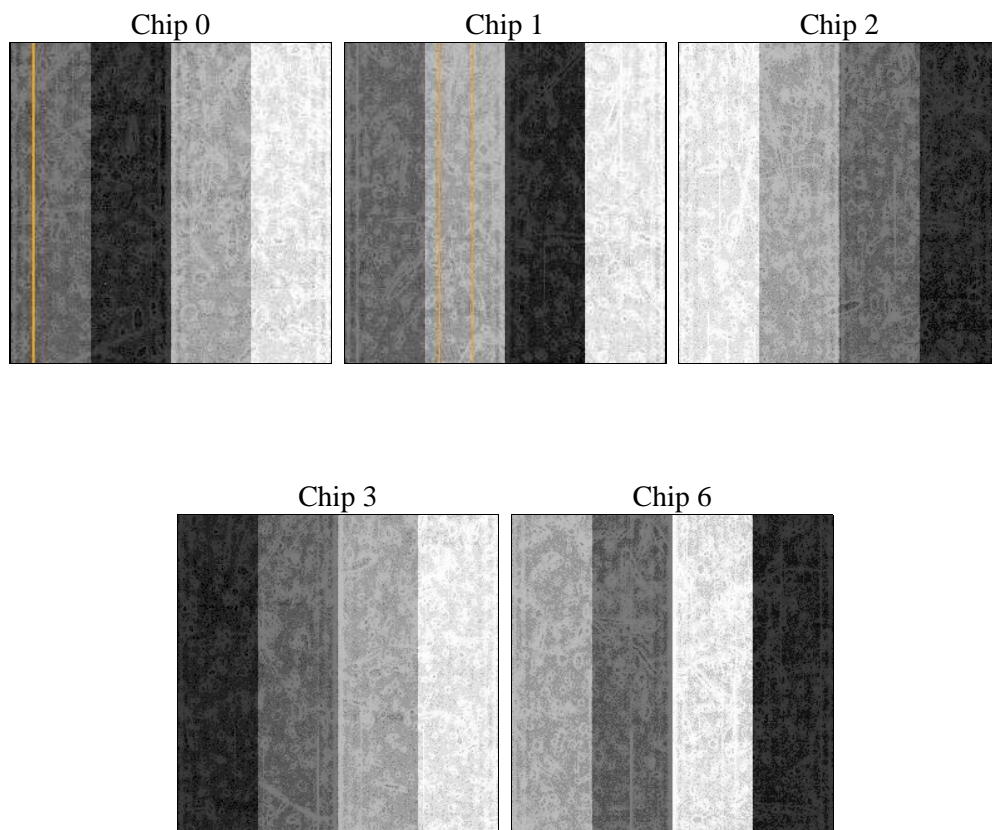
2 OBI

2.1 OBI

2.1.1 Images



2.1.2 Bias



2.1.3 Parameters

obi_num	0	Obi number	sched_exp_time	45000.000000	[s] Scheduled observation exposure time
ascdsver	10.2.4	Processing system revision	ontime	45080.159376323	Sum of GTIs [s]
caldbver	4.6.2	 	ontime0	45080.159356415	Sum of GTIs [s]
date	2014-08-15T07:00:03	Date and time of file creation	ontime1	45080.159316301	Sum of GTIs [s]
revision	1	Processing version of data	ontime2	45083.300346732	Sum of GTIs [s]
			ontime3	45080.159376323	Sum of GTIs [s]
			ontime6	45083.300346732	Sum of GTIs [s]
			l1events	1067290	Number of level 1 events

2.1.4 Events

	ccd 0	ccd 1	ccd 2	ccd 3	ccd 6
level 1 events	199162	211990	213651	224434	218053
rejected events	172260	175849	187707	189270	191155
rejected %	86%	82%	87%	84%	87%

	ccd 0	ccd 1	ccd 2	ccd 3	ccd 6
grade 0 events	9480	16770	9200	16961	8972
	4%	7%	4%	7%	4%
grade 1 events	112	140	115	170	109
	0%	0%	0%	0%	0%
grade 2 events	6708	7366	6266	6690	6206
	3%	3%	2%	2%	2%
grade 3 events	2783	2775	2558	3001	2780
	1%	1%	1%	1%	1%
grade 4 events	2499	2876	2724	2958	2680
	1%	1%	1%	1%	1%
grade 5 events	10523	11206	10155	11713	11580
	5%	5%	4%	5%	5%
grade 6 events	5434	6355	5201	5557	6263
	2%	2%	2%	2%	2%
grade 7 events	161623	164502	177432	177384	179463
	81%	77%	83%	79%	82%

2.2 Compared Parameters

Parameter	Planned	Actual	Parameter	Planned	Actual
Instrument	ACIS	ACIS	Obspar format version number	7	7
Detector	ACIS-01236	ACIS-01236	Obspar file type	PREDICTED	ACTUAL
Grating	NONE	NONE	Obspar update status	NONE	UPDATED
Data mode	VFAINT	VFAINT	CCD I0 on	Y	Y
Observation mode	POINTING	POINTING	CCD I1 on	Y	Y
[deg] Pointing RA	336.478477	336.3486673085486	CCD I2 on	Y	Y
[deg] Pointing Dec	78.337874	78.32932399973839	CCD I3 on	Y	Y
[deg] Pointing Roll	167.566748	167.902563327869	CCD S0 on	N	N
[mm] SIM focus pos	-0.782348	-0.7809083437167272	CCD S1 on	N	N
[mm] SIM defocus	0	0.001439871863259334	CCD S2 on	O1	Y
[mm] SIM translation stage pos	-225.892463	-225.8835723768489	CCD S3 on	N	N
[mm] SIM translation stage offset	-7.7	-7.708880626080827	CCD S4 on	N	N
[s] Observation start time (MET)	524391718.184000	524390007.13093	CCD S5 on	N	N
Observation start date	2014-08-14T08:20:51	2014-08-14T07:53:27	Number of optional ACIS chips dropped	0	0
[s] Observation end time (MET)	524436718.184000	524437108.44604	On-chip summing requested	N	N
Observation end date	2014-08-14T20:50:51	2014-08-14T20:58:28	Subarray requested	NONE	NONE
Read mode	TIMED	TIMED	Alternating exposures requested	N	N
			[s] Primary exposure time	0.000000	3.1

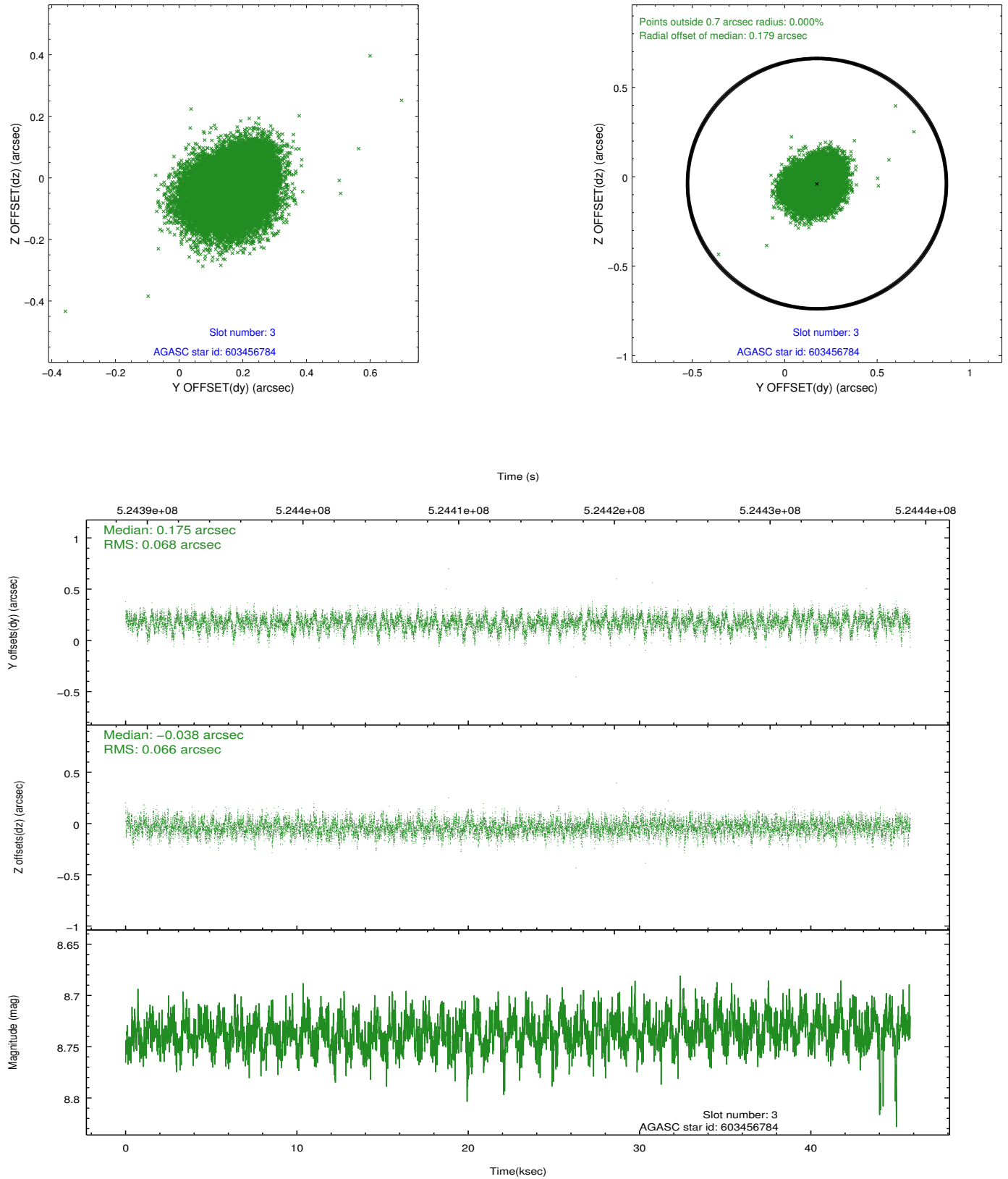
2.3 Aspect

Slot Statistics

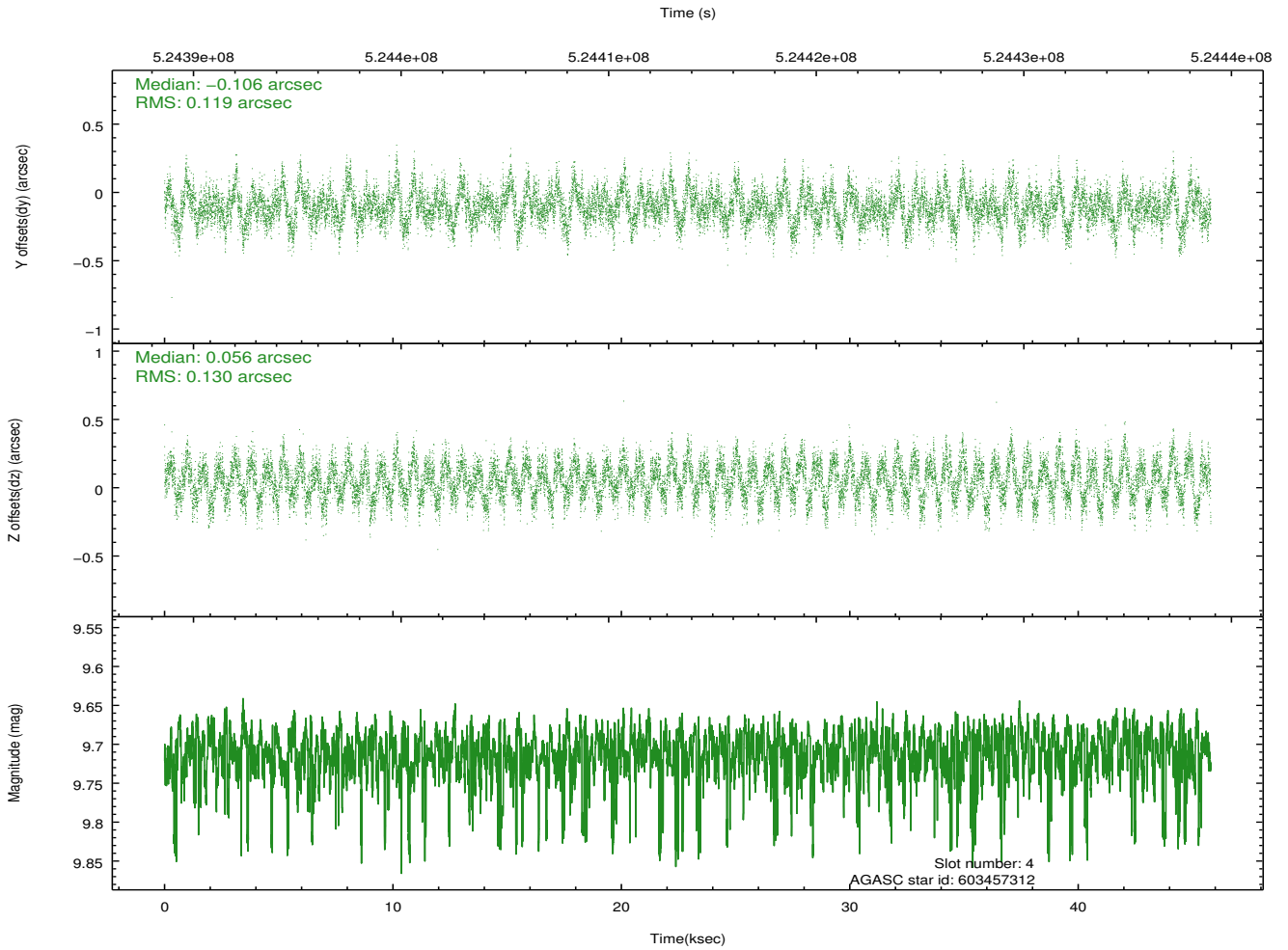
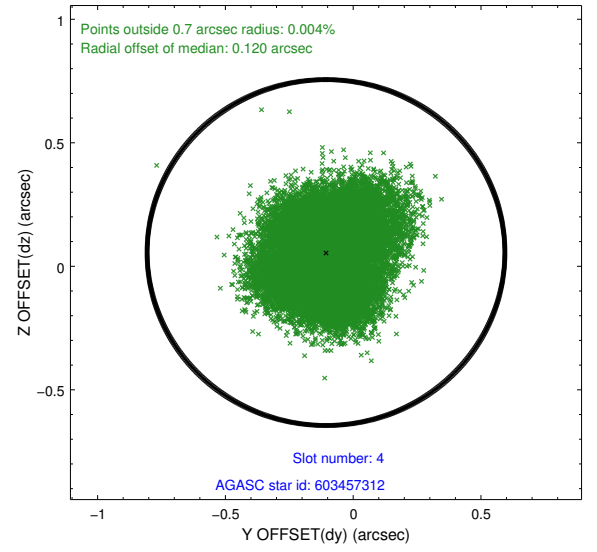
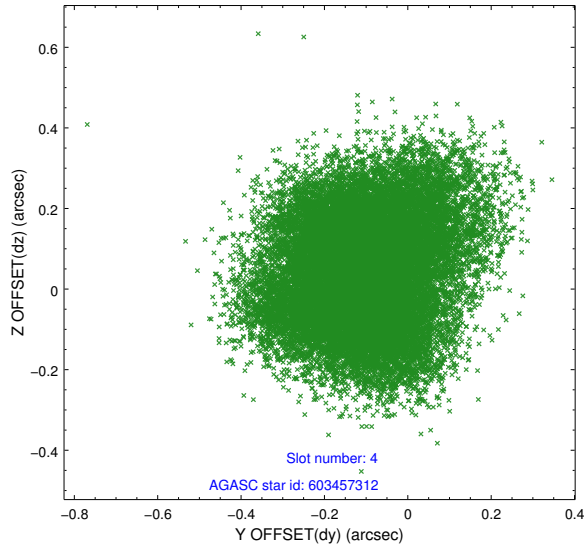
slot	status	id	mag	n_pts	med_dy	med_dz	dr1	dr2	ra	dec	mean_y	mean_z
0	FID	ACIS-I-2	6.99	11171	-0.143	-0.052	0.023	0.038	0.000000	0.000000	-775.28	-1006.69
1	FID	ACIS-I-4	6.94	11172	0.262	0.093	0.015	0.029	0.000000	0.000000	2139.12	899.61
2	FID	ACIS-I-5	7.03	11172	-0.220	0.025	0.021	0.030	0.000000	0.000000	-1828.82	896.33
3	GUIDE	603456784	8.74	22333	0.175	-0.038	0.101	0.164	339.551233	78.515005	-1999.77	-1152.49
4	GUIDE	603457312	9.71	22320	-0.106	0.056	0.191	0.299	334.527703	78.605596	1567.52	-664.87
5	GUIDE	603469200	8.80	22333	0.125	0.004	0.151	0.230	338.935167	78.242228	-1824.84	-88.49
6	GUIDE	603982664	8.98	22331	-0.098	0.028	0.133	0.215	335.768352	78.795565	840.54	-1504.96
7	GUIDE	603999104	6.26	22344	-0.099	-0.049	0.130	0.194	336.676650	78.785849	212.41	-1604.22

2.4 Star Slots

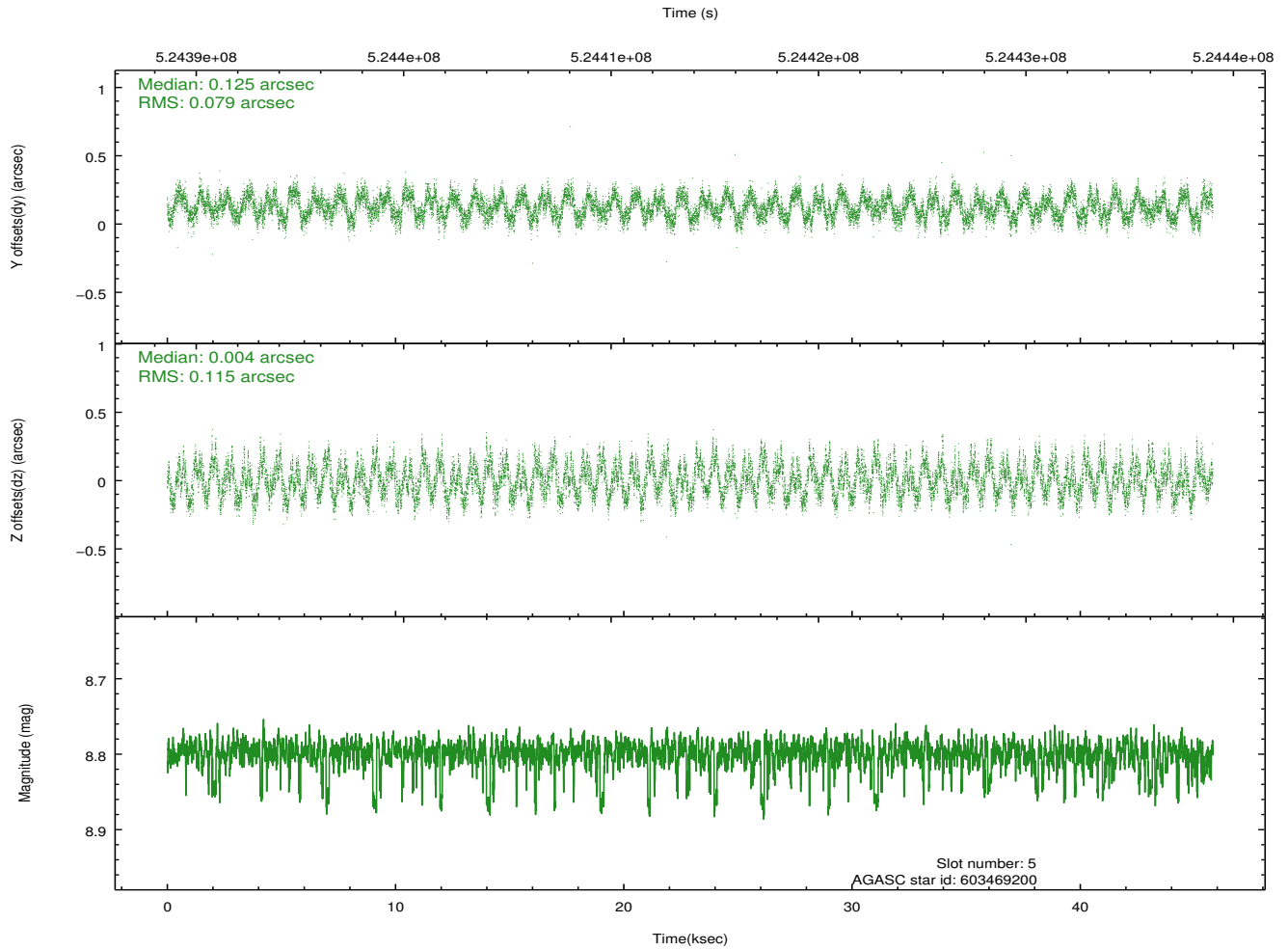
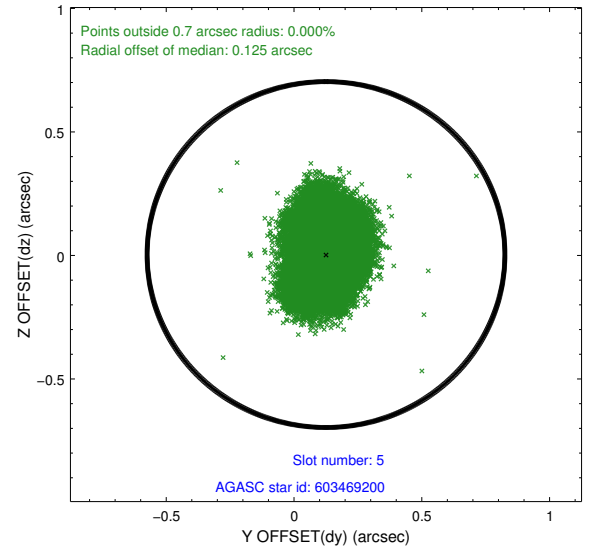
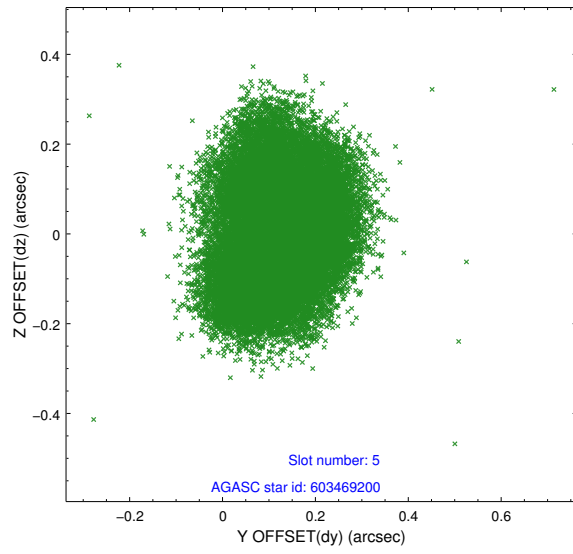
2.4.1 Slot 3



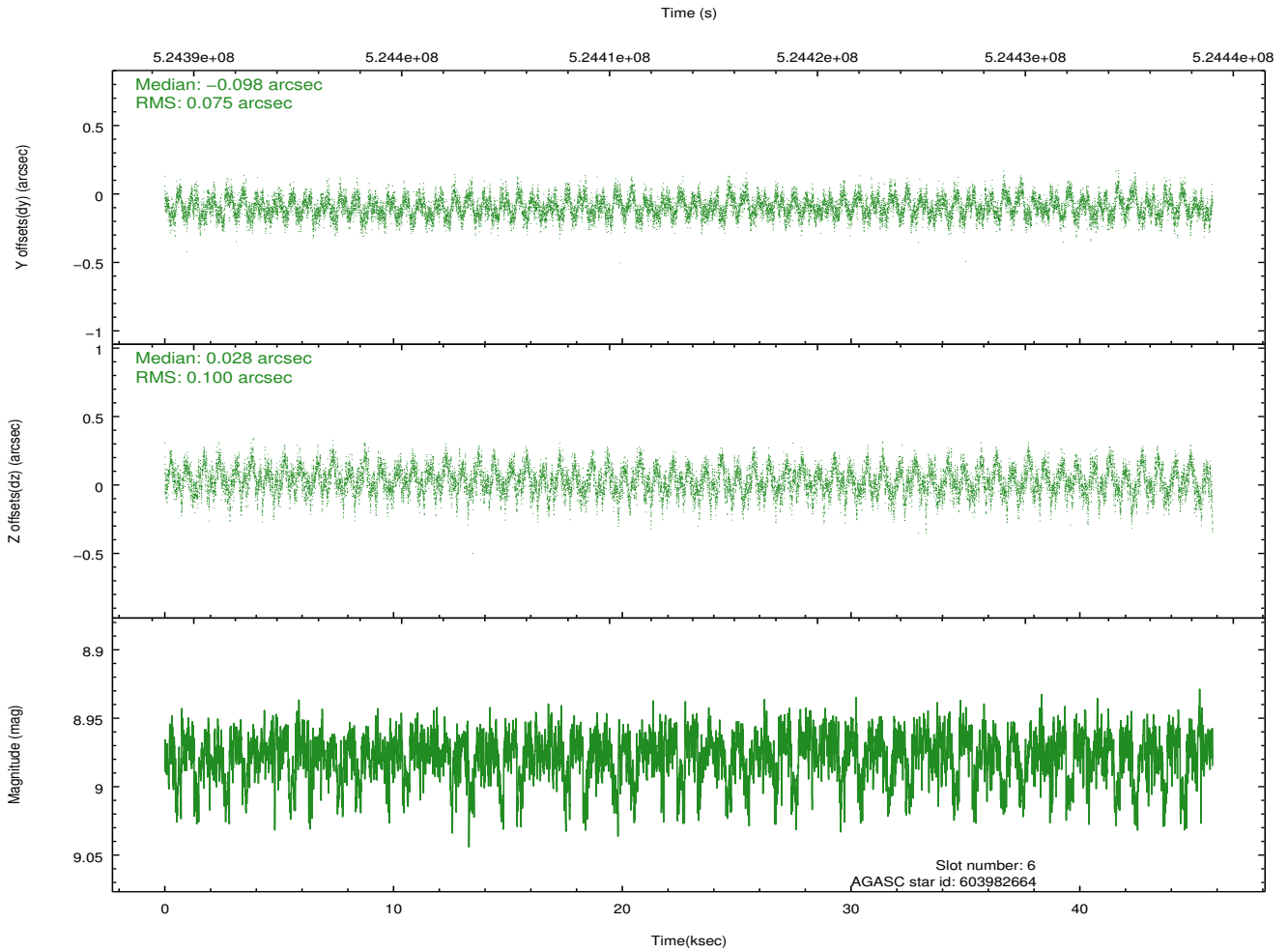
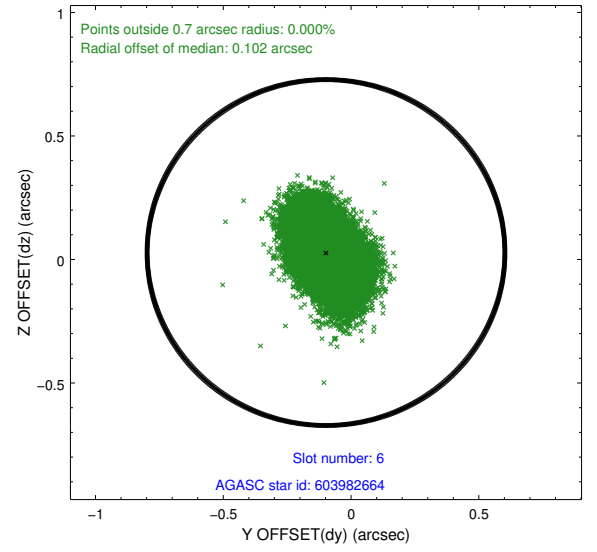
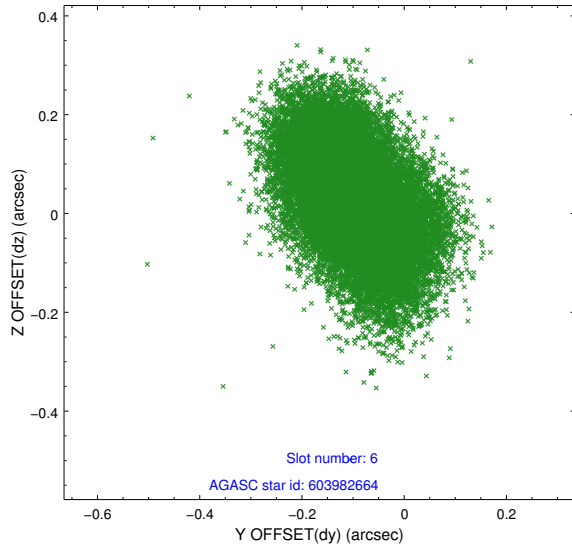
2.4.2 Slot 4



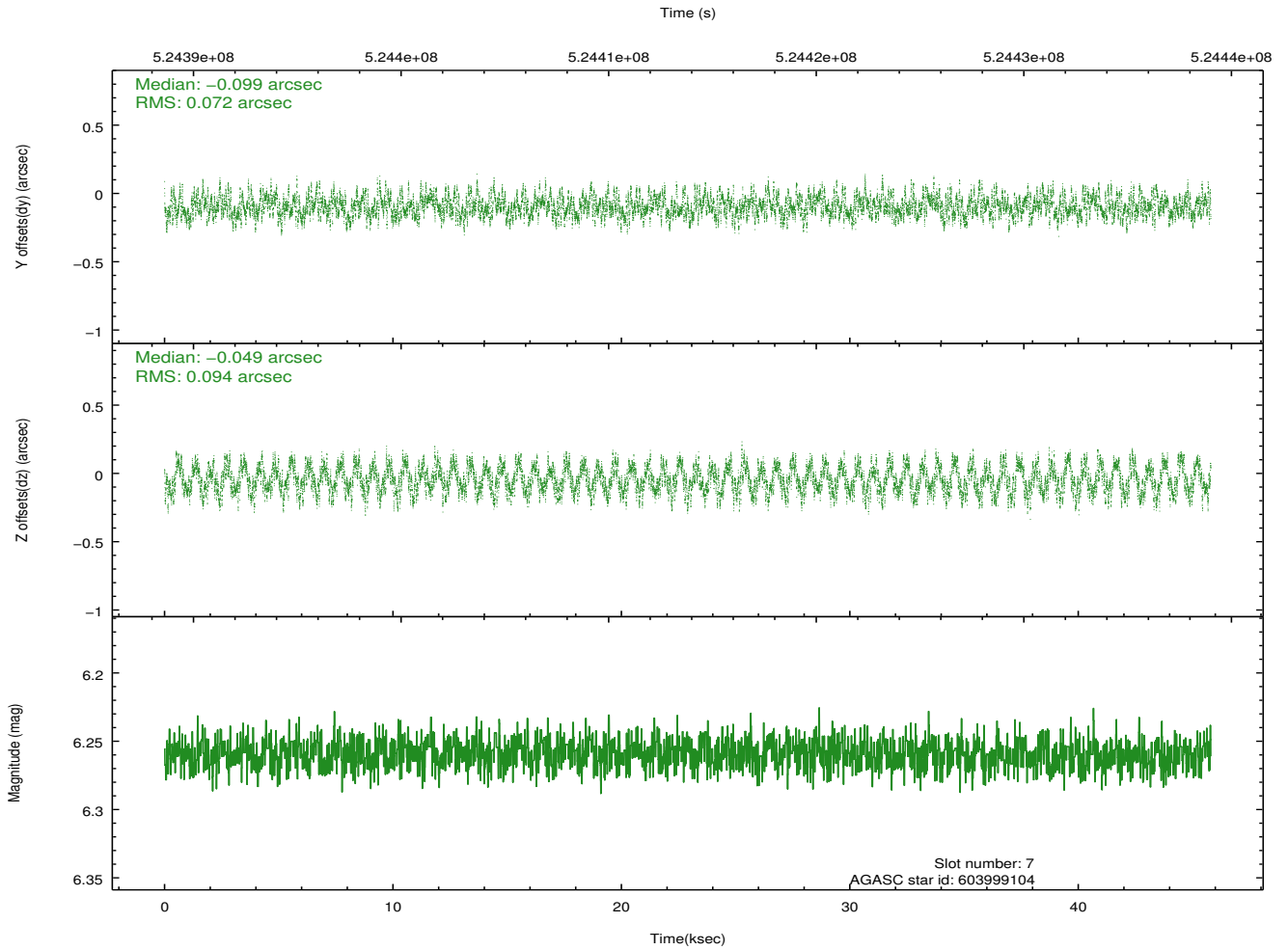
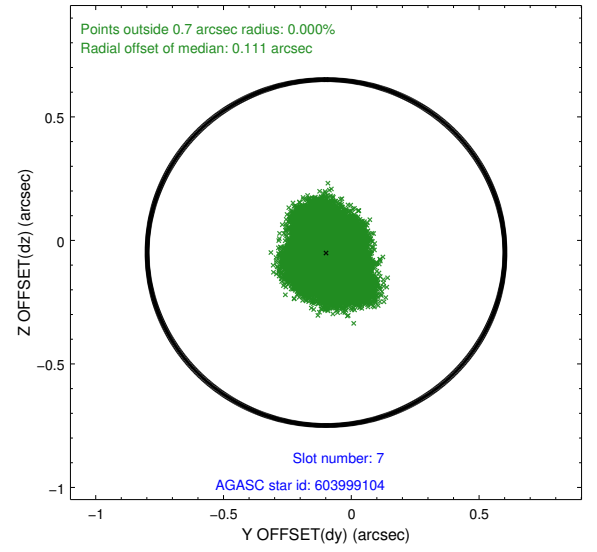
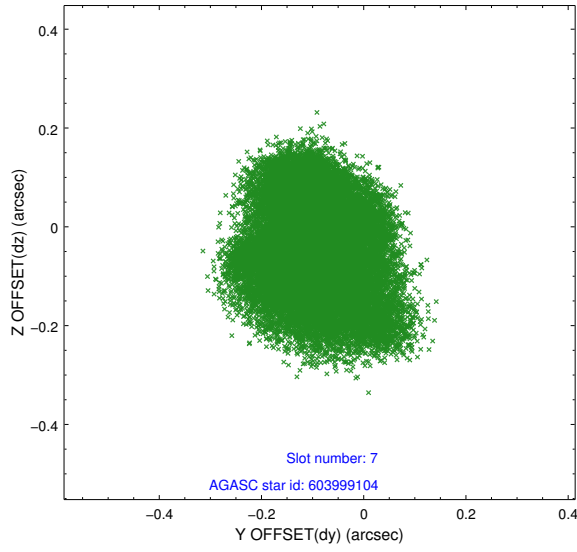
2.4.3 Slot 5



2.4.4 Slot 6

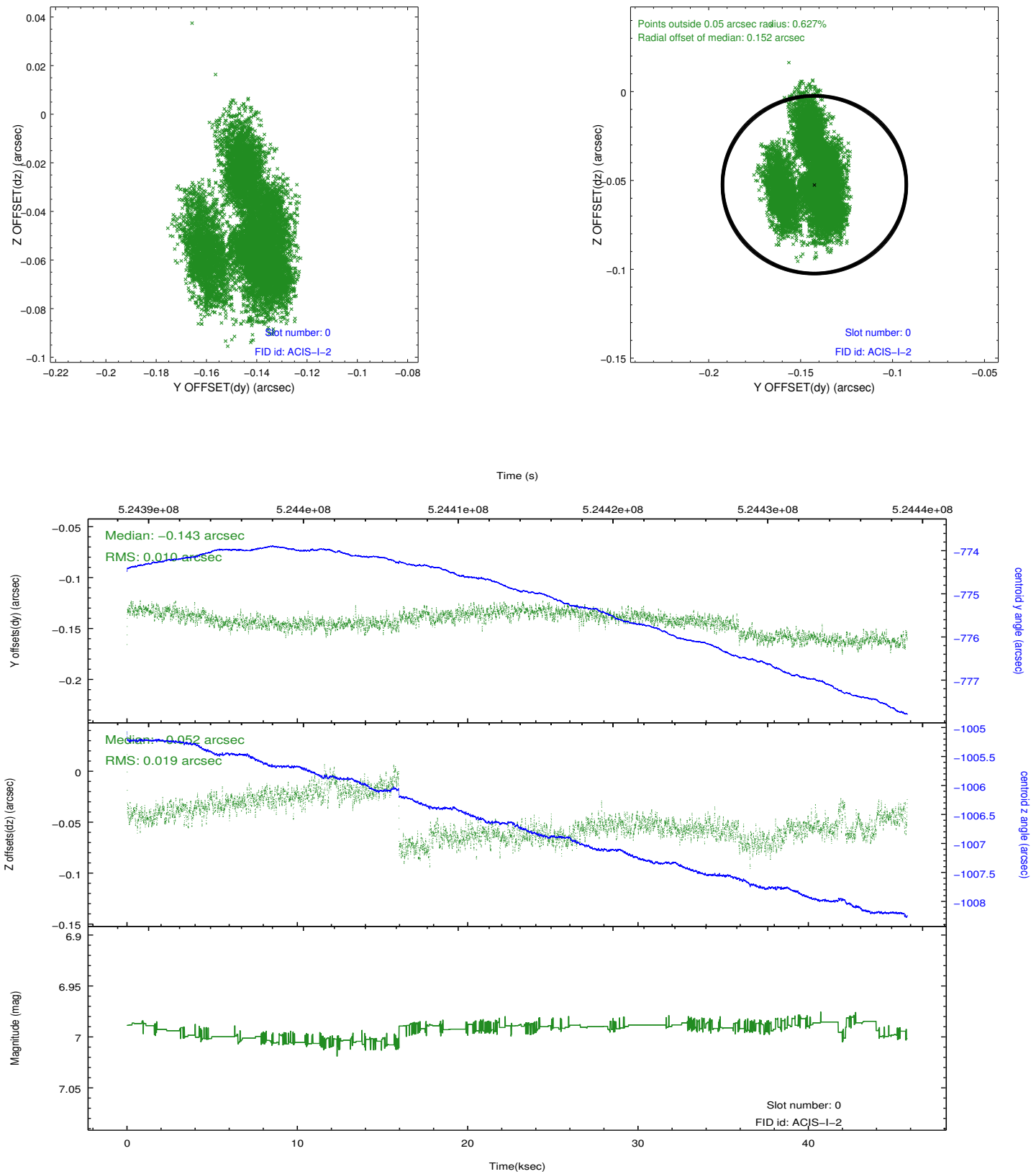


2.4.5 Slot 7

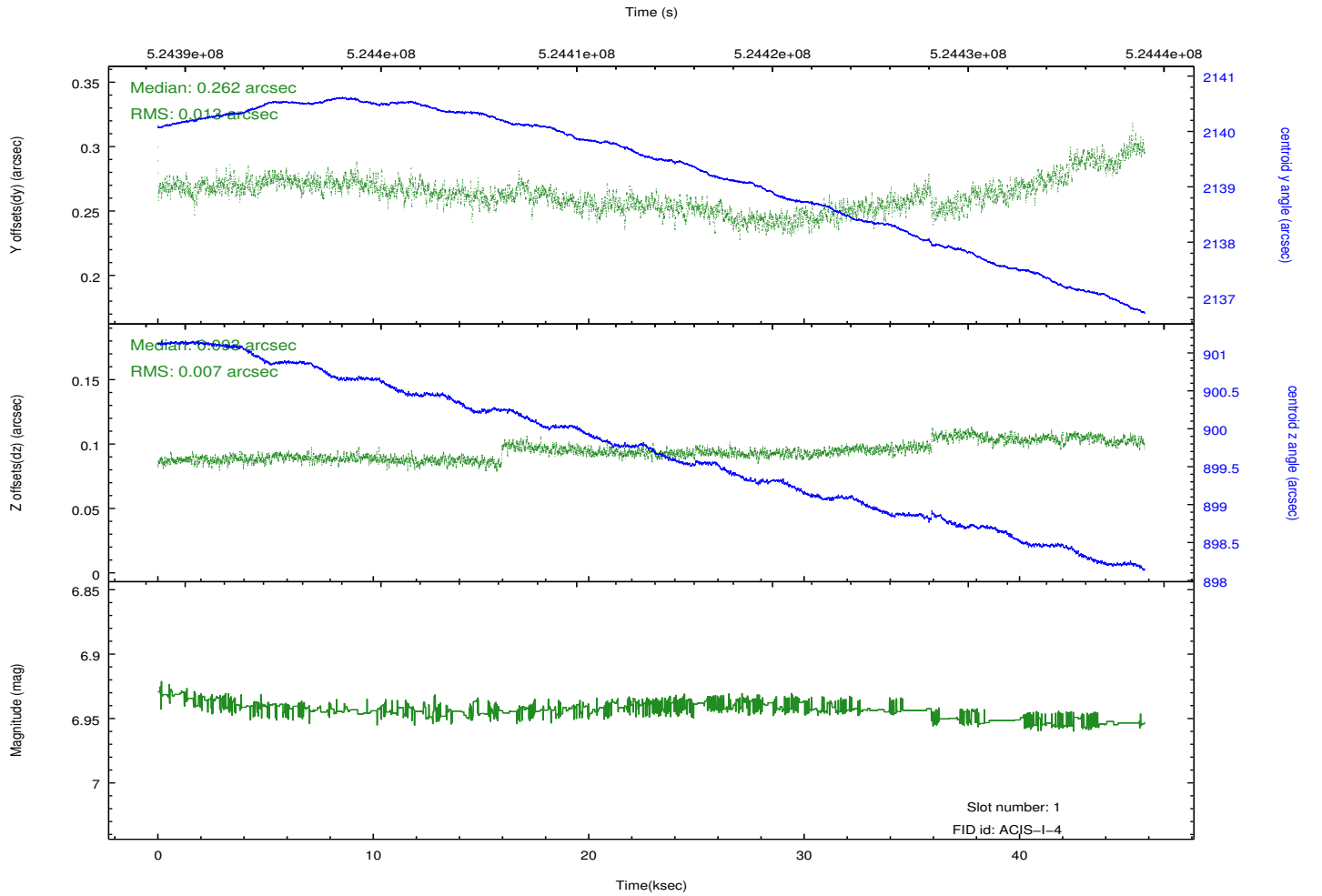
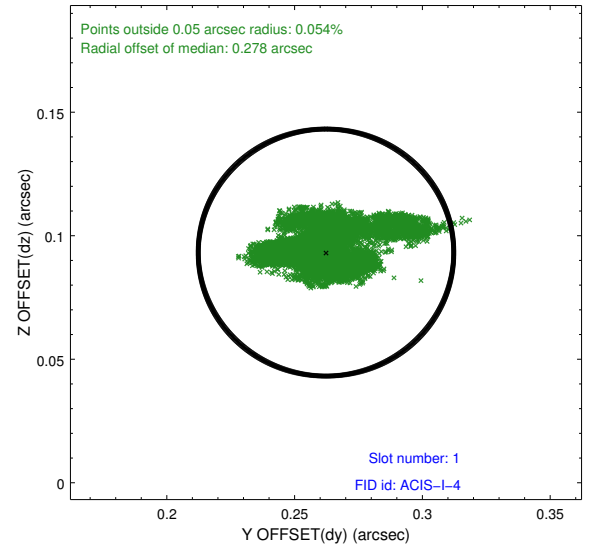
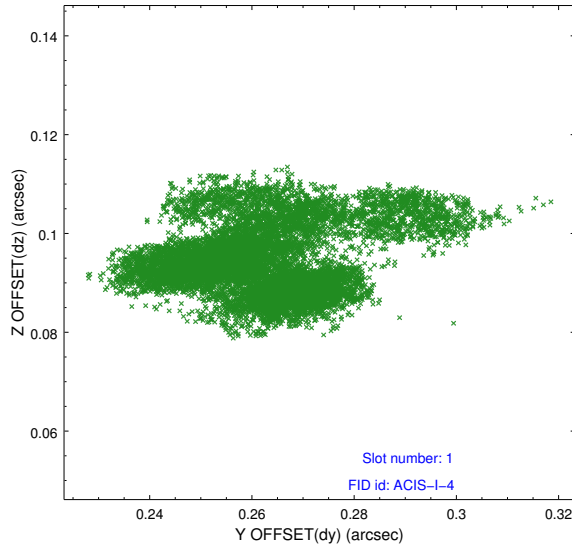


2.5 FID Slots

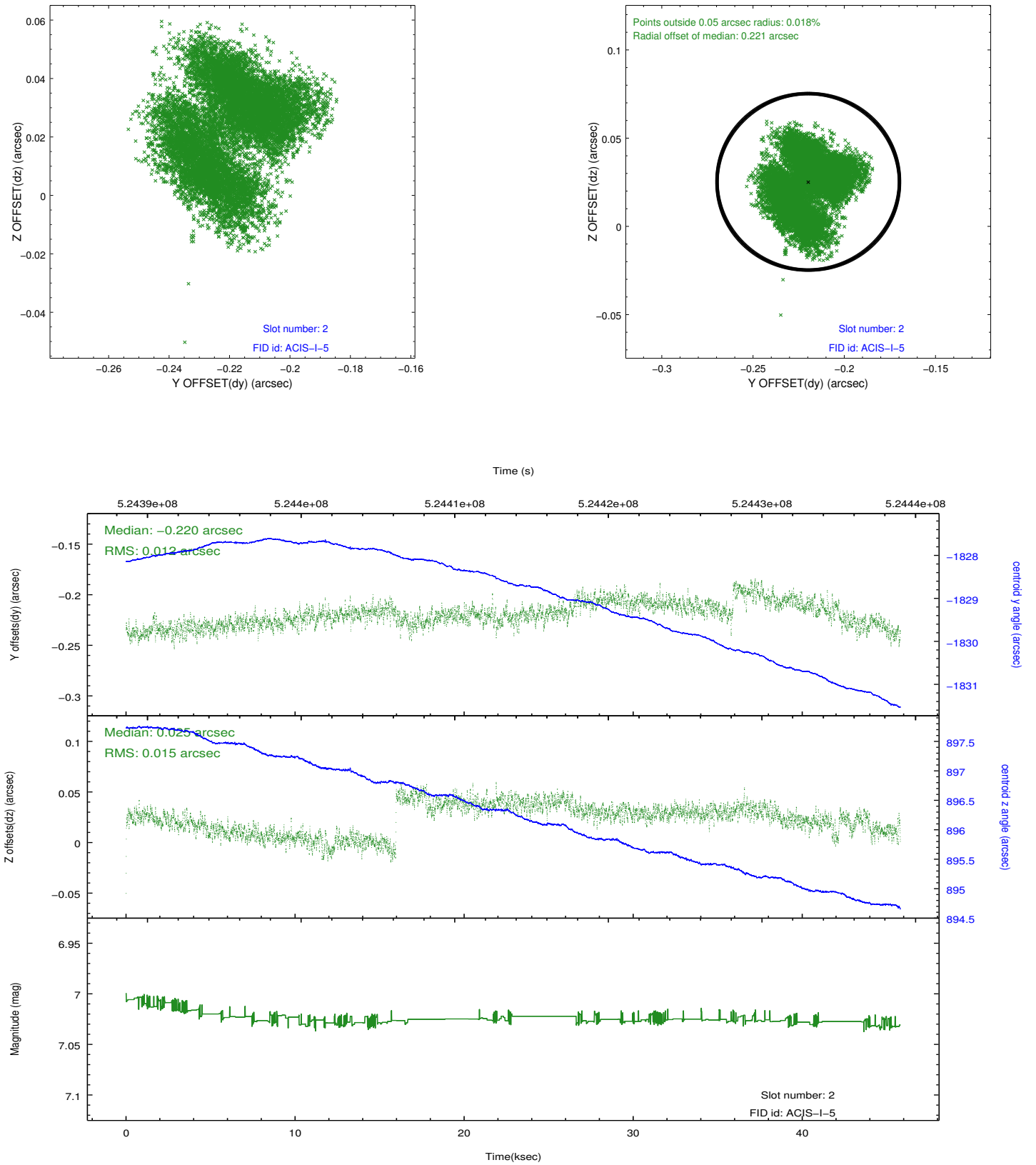
2.5.1 Slot 0



2.5.2 Slot 1



2.5.3 Slot 2



A Summary

A.1 Status

V&V Scientist	Joy Nichols
V&V Date (YYYY-MM-DD)	2014.08.15
V&V Edition	1
V&V Disposition and Status	OK
V&V Charge Time	45.080159376323

A.2 Comments