

V&V Reference Report

L2 ASCDS Version : 10.3.3

Observation 17577 - L2 Version 1
Chandra X-Ray Center

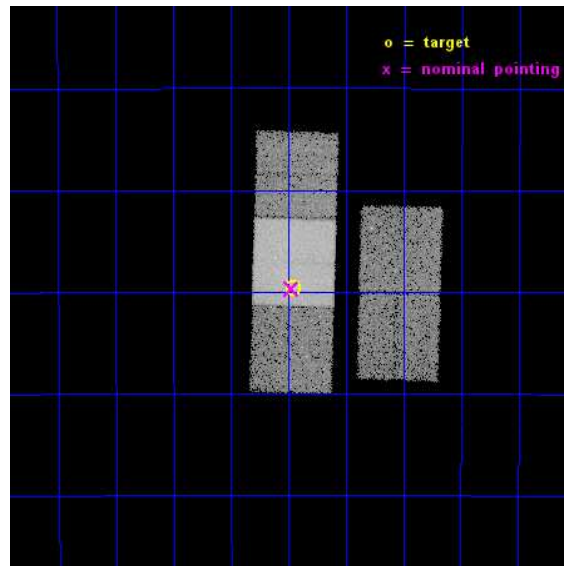
L2 Processing Date : Feb 2 2015

Contents

1	Front	2
2	OBI	3
2.1	OBI	3
2.1.1	Images	3
2.1.2	Bias	3
2.1.3	Parameters	4
2.1.4	Events	4
2.2	Compared Parameters	5
2.3	Aspect	6
2.4	Star Slots	9
2.4.1	Slot 3	9
2.4.2	Slot 4	10
2.4.3	Slot 5	11
2.4.4	Slot 6	12
2.4.5	Slot 7	13
2.5	FID Slots	14
2.5.1	Slot 0	14
2.5.2	Slot 1	15
2.5.3	Slot 2	16
A	Summary	17
A.1	Status	17
A.2	Comments	17

1 Front

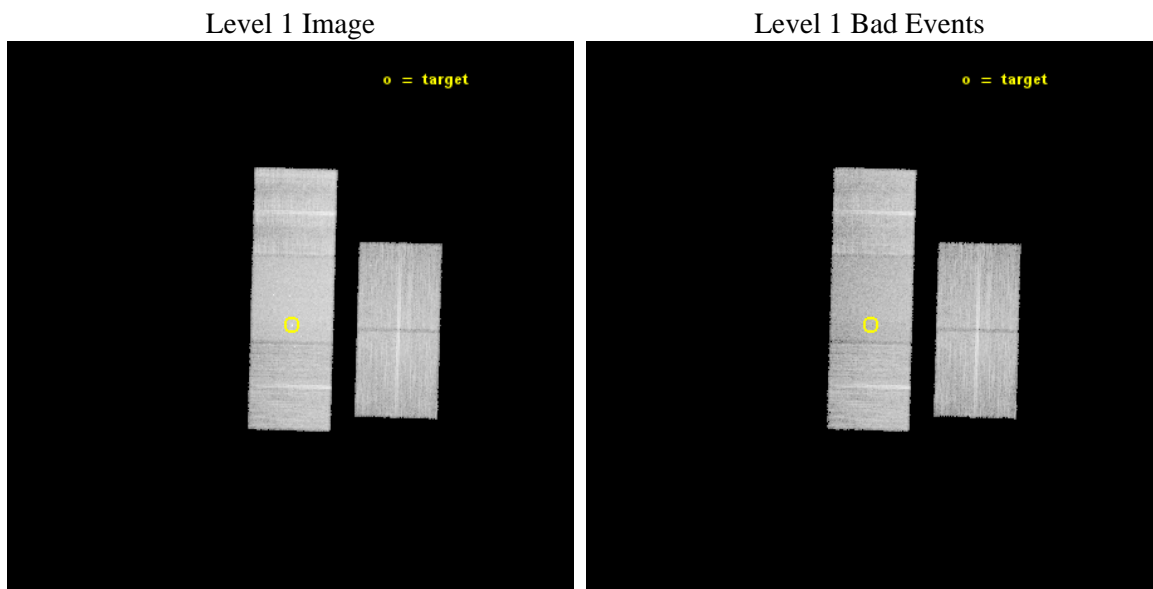
seq_num	702987	Sequence number
obs_id	17577	Observation id
title	A Chandra Study of Nearby Hybrid Morphology Radio Source	Proposal
observer	Dr. Dharam Lal	Principal investigator
object	MRC0131-367	Source name
dtcycle	0	
cycle	P	events from which exps? Prim/Second/Both
ra_targ	23.490417	Observer's specified target RA [deg]
dec_targ	-36.493333	Observer's specified target Dec [deg]
ra_nom	23.493721368871	Nominal RA [deg]
dec_nom	-36.494967538202	Nominal Dec [deg]
roll_nom	271.64552810262	Nominal Roll [deg]
revision	1	Processing version of data
ontime	25062.376600027	Sum of GTIs [s]
livetime	24734.918199094	Livetime [s]
ontime2	25059.071449876	Sum of GTIs [s]
ontime3	25059.153649211	Sum of GTIs [s]
ontime6	25062.335560083	Sum of GTIs [s]
ontime7	25062.376600027	Sum of GTIs [s]
ontime8	25062.253480077	Sum of GTIs [s]
l2events	122499	Number of level 2 events



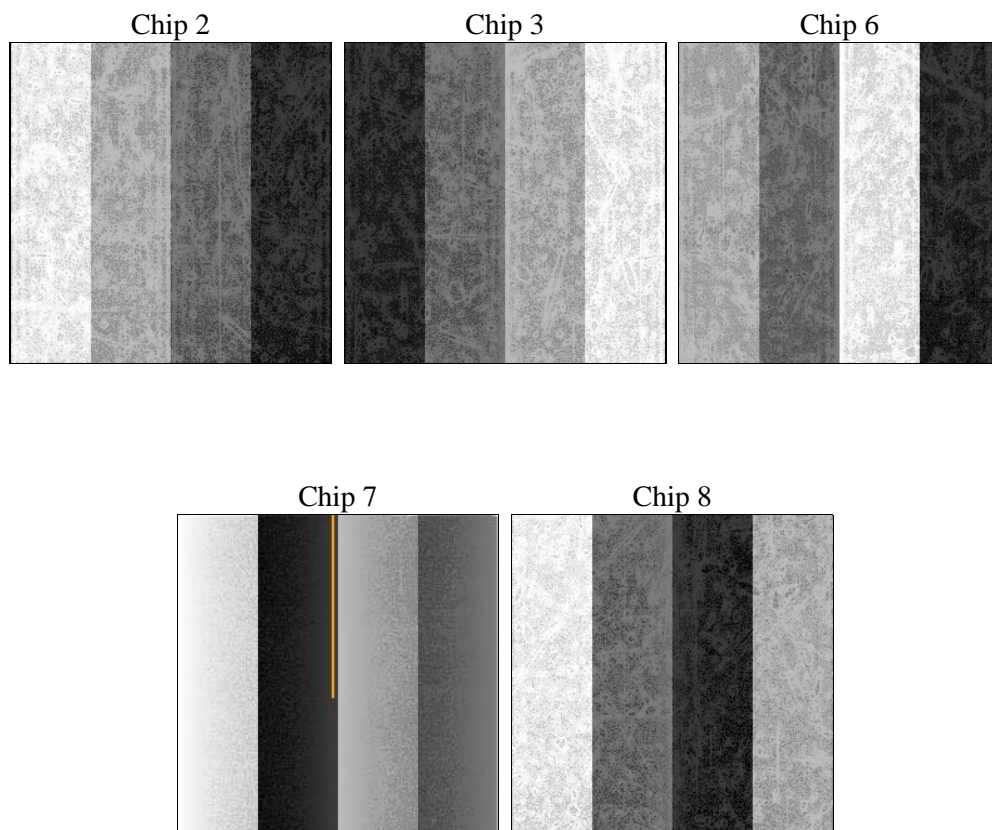
2 OBI

2.1 OBI

2.1.1 Images



2.1.2 Bias



2.1.3 Parameters

obi_num	0	Obi number	sched_exp_time	25000.000000	[s] Scheduled observation exposure time
ascdsver	10.3.3	Processing system revision	ontime	25062.376600027	Sum of GTIs [s]
caldsver	4.6.6	 	ontime2	25059.071449876	Sum of GTIs [s]
date	2015-02-03T00:06:21	Date and time of file creation	ontime3	25059.153649211	Sum of GTIs [s]
revision	1	Processing version of data	ontime6	25062.335560083	Sum of GTIs [s]
			ontime7	25062.376600027	Sum of GTIs [s]
			ontime8	25062.253480077	Sum of GTIs [s]
			l1events	675052	Number of level 1 events

2.1.4 Events

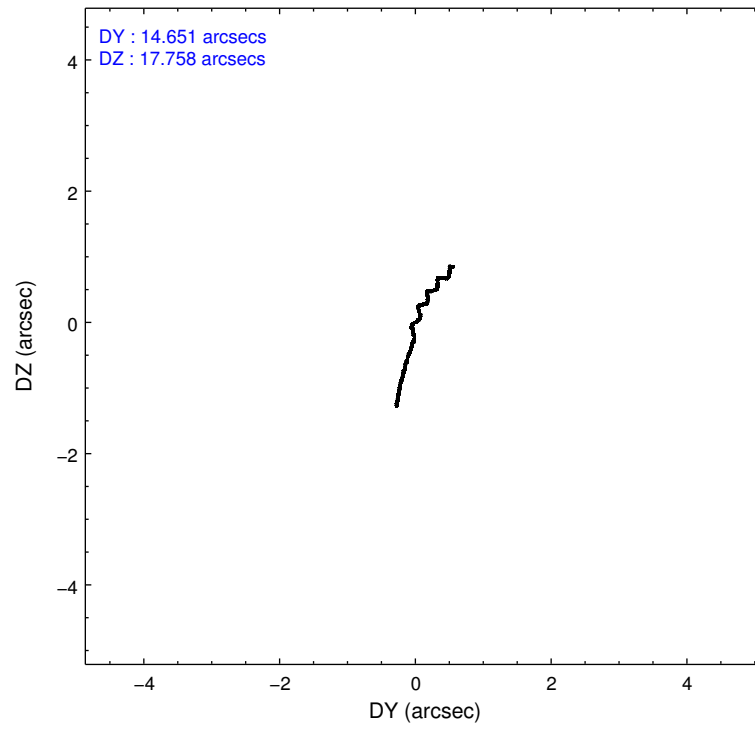
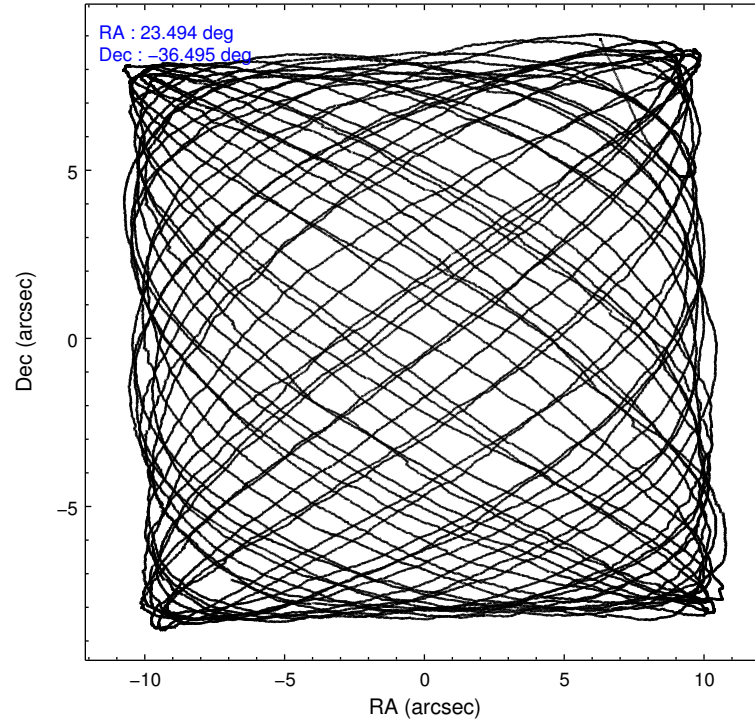
	ccd 2	ccd 3	ccd 6	ccd 7	ccd 8
level 1 events	114854	113547	123056	163870	159725
rejected events	101609	100235	108402	90783	116670
rejected %	88%	88%	88%	55%	73%

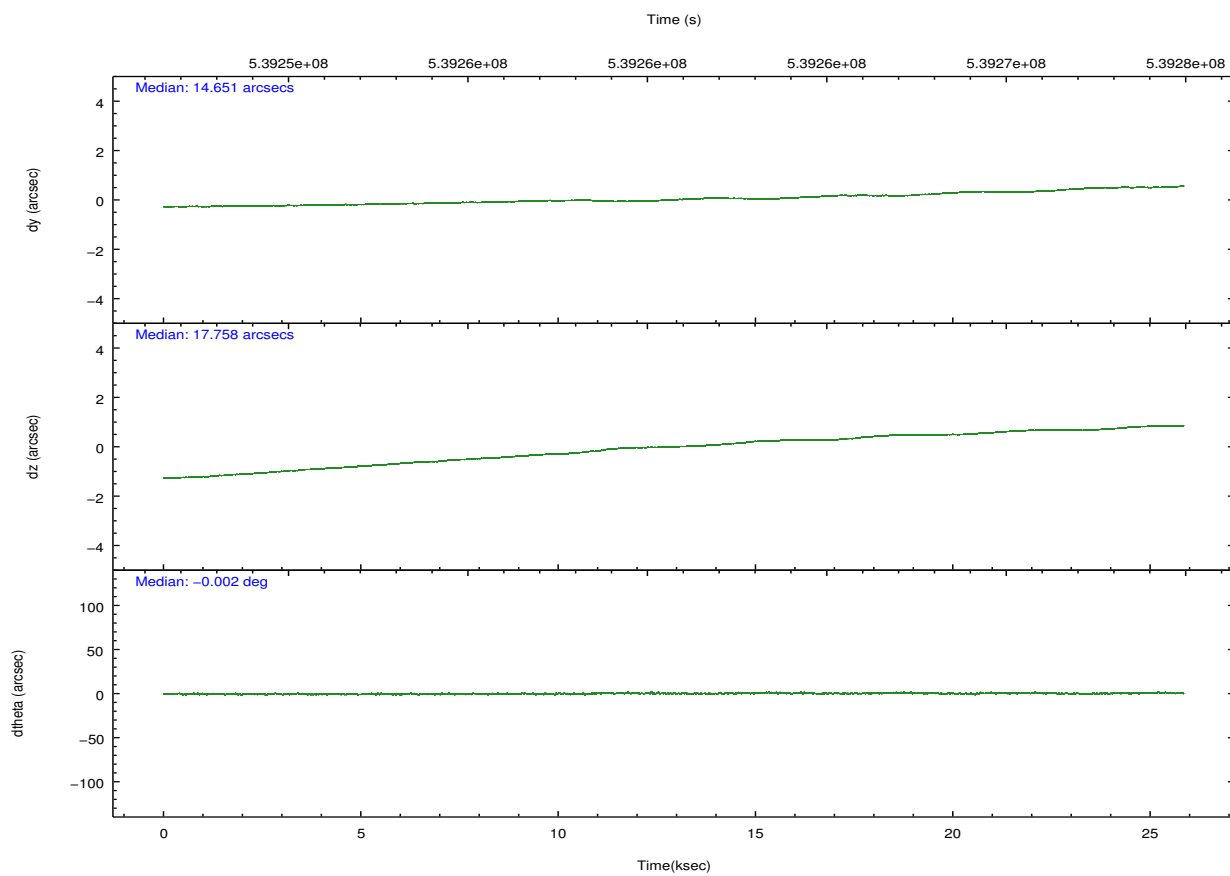
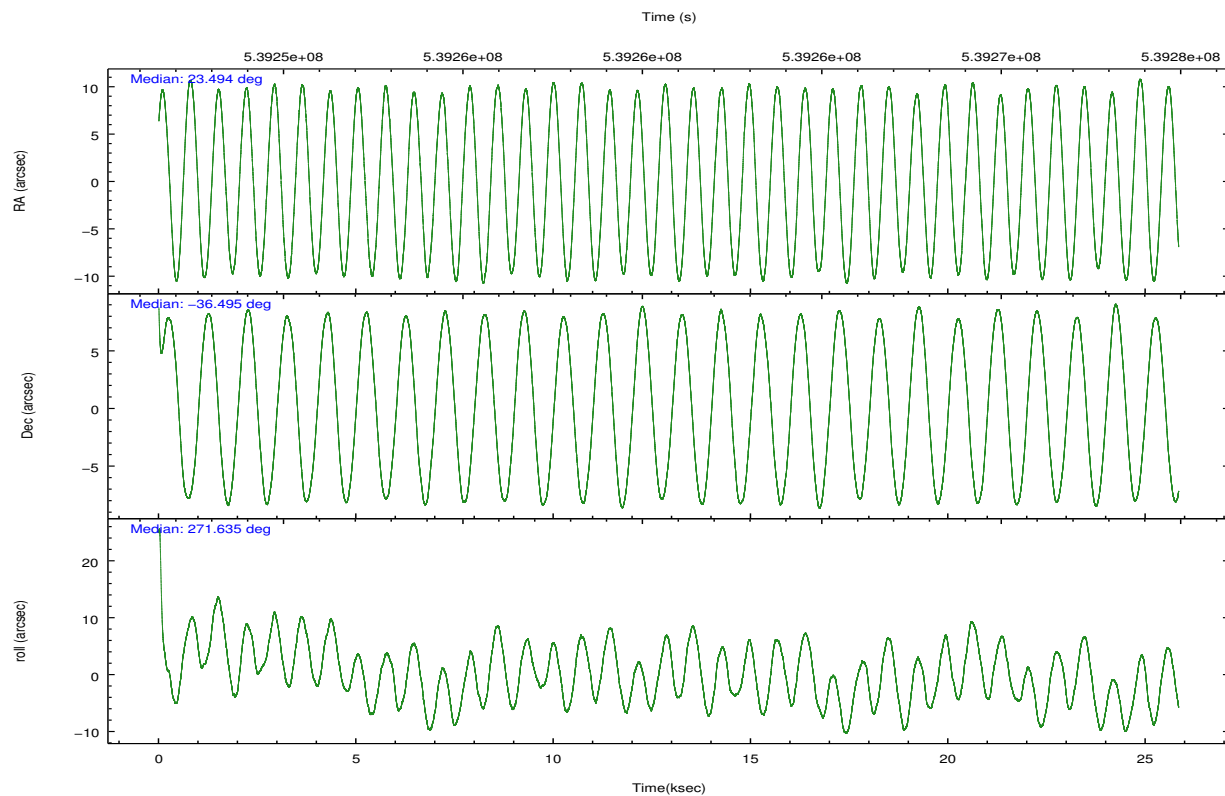
	ccd 2	ccd 3	ccd 6	ccd 7	ccd 8
grade 0 events	4629	4934	5097	6880	12862
	4%	4%	4%	4%	8%
grade 1 events	70	68	69	202	103
	0%	0%	0%	0%	0%
grade 2 events	3228	2827	3355	15020	10078
	2%	2%	2%	9%	6%
grade 3 events	1402	1366	1464	6026	4374
	1%	1%	1%	3%	2%
grade 4 events	1341	1405	1403	5968	4100
	1%	1%	1%	3%	2%
grade 5 events	4843	6141	6019	16274	8725
	4%	5%	4%	9%	5%
grade 6 events	2648	2782	3340	39207	11648
	2%	2%	2%	23%	7%
grade 7 events	96693	94024	102309	74293	107835
	84%	82%	83%	45%	67%

2.2 Compared Parameters

Parameter	Planned	Actual	Parameter	Planned	Actual
Instrument	ACIS	ACIS	Obspar format version number	7	7
Detector	ACIS-23678	ACIS-23678	Obspar file type	PREDICTED	ACTUAL
Grating	NONE	NONE	Obspar update status	NONE	UPDATED
Data mode	VFAINT	VFAINT	CCD I0 on	N	N
Observation mode	POINTING	POINTING	CCD I1 on	N	N
[deg] Pointing RA	23.475412	23.49372136887084	CCD I2 on	O1	Y
[deg] Pointing Dec	-36.471811	-36.49496753820234	CCD I3 on	O2	Y
[deg] Pointing Roll	271.478005	271.6455281026181	CCD S0 on	N	N
[mm] SIM focus pos	-0.684267	-0.6828225247311905	CCD S1 on	N	N
[mm] SIM defocus	0	0.001444936568705701	CCD S2 on	Y	Y
[mm] SIM translation stage pos	-190.132523	-190.1400660498719	CCD S3 on	Y	Y
[mm] SIM translation stage offset	0	0.00754346686406393	CCD S4 on	Y	Y
[s] Observation start time (MET)	539248658.184000	539246685.95767	CCD S5 on	N	N
Observation start date	2015-02-02T07:16:31	2015-02-02T06:44:45	Number of optional ACIS chips dropped	0	0
[s] Observation end time (MET)	539273658.184000	539274281.52171	On-chip summing requested	N	N
Observation end date	2015-02-02T14:13:11	2015-02-02T14:24:41	Subarray requested	NONE	NONE
Read mode	TIMED	TIMED	Alternating exposures requested	N	N
			[s] Primary exposure time	0.000000	3.1

2.3 Aspect



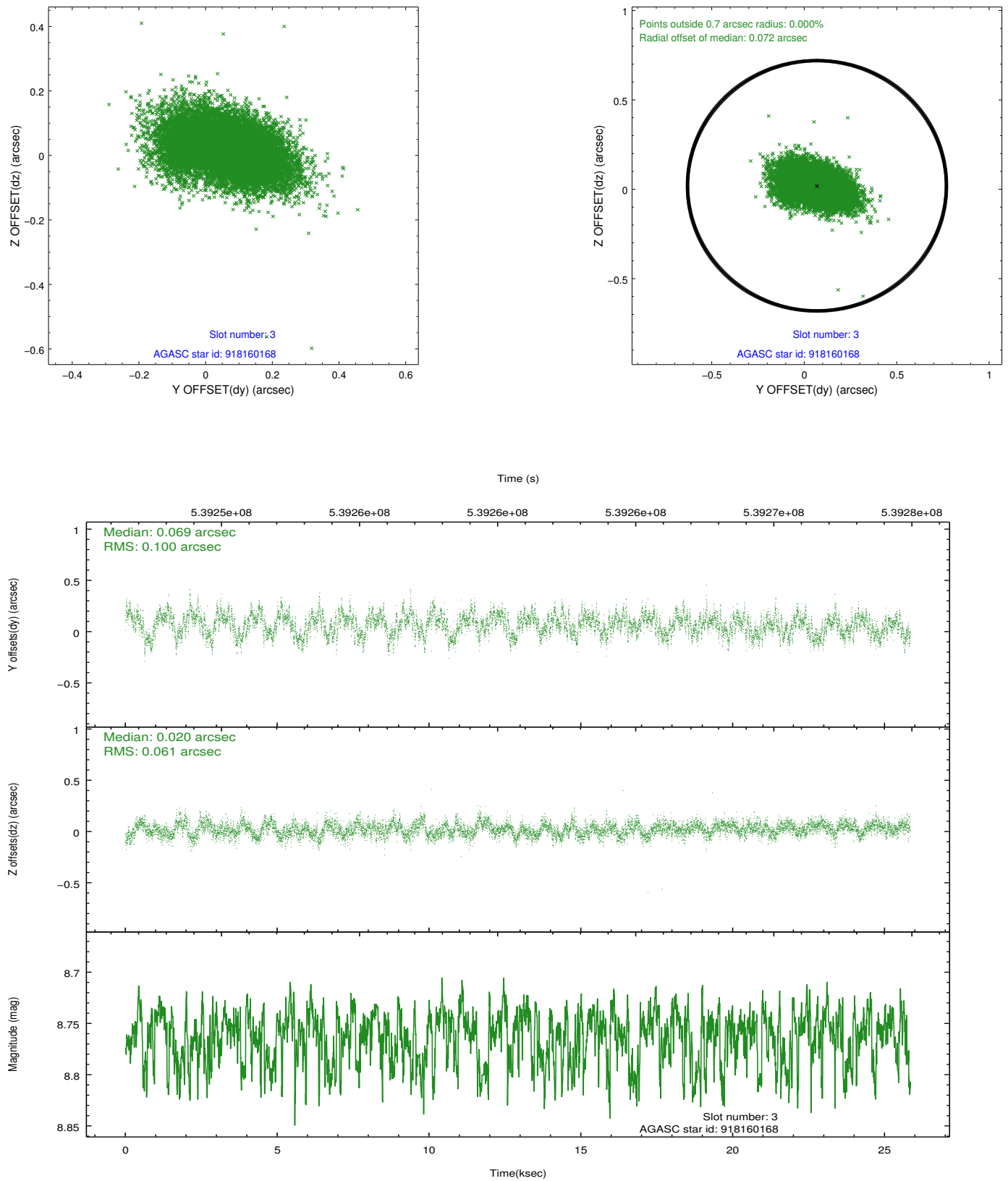


Slot Statistics

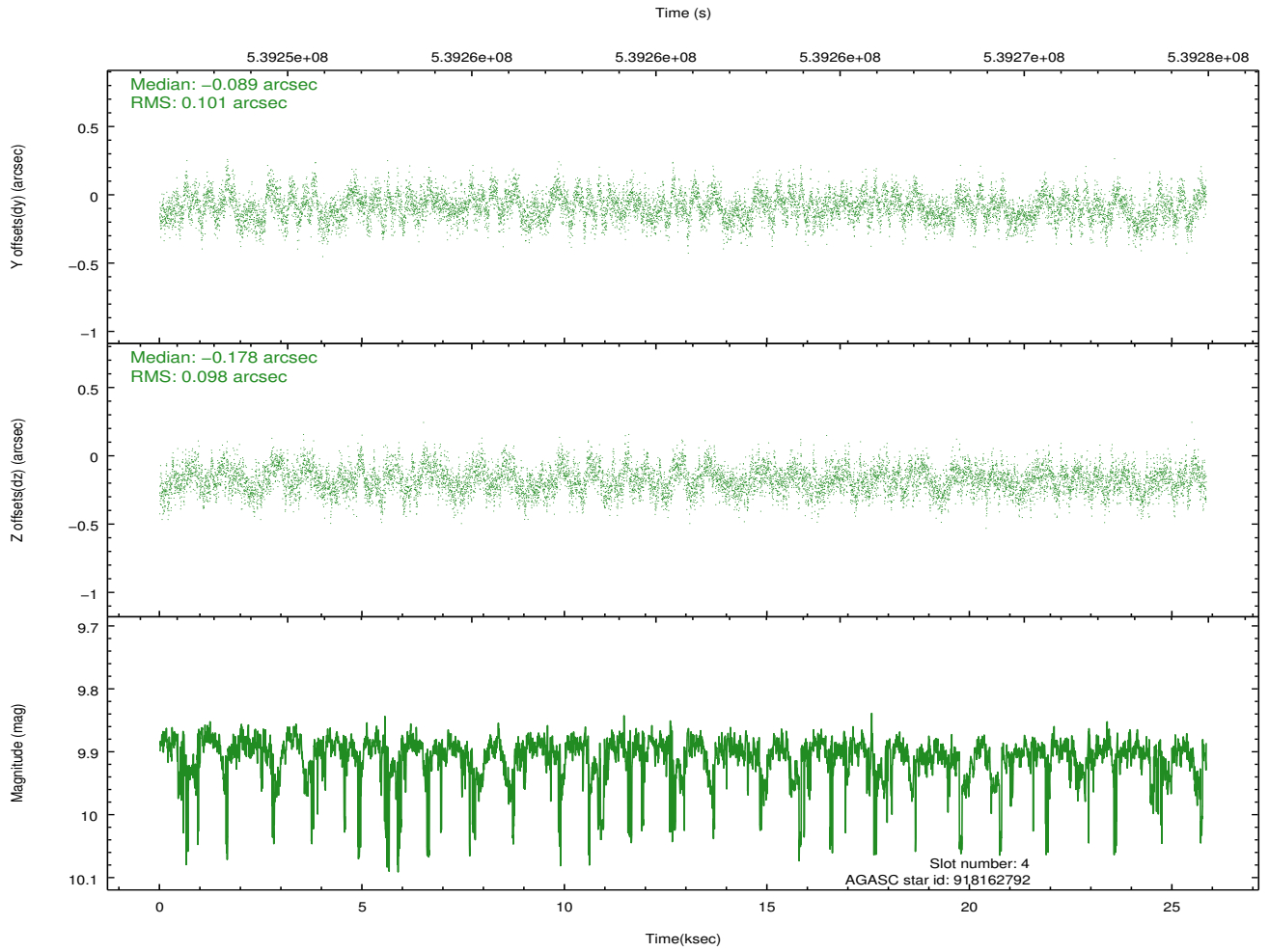
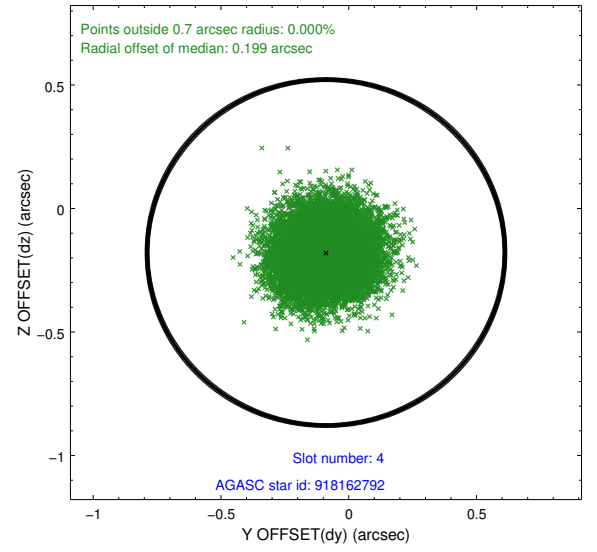
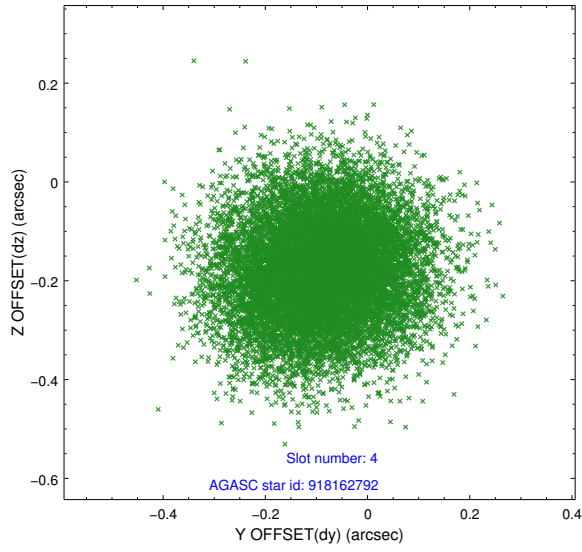
slot	status	used	id	mag	n_pts	med_dy	med_dz	dr1	dr2	ra	dec	mean_y	mean_z
0	FID		ACIS-S-2	6.96	6303	-0.160	-0.094	0.008	0.013	0.000000	0.000000	-767.88	-1739.19
1	FID		ACIS-S-4	7.05	6303	0.199	0.085	0.010	0.015	0.000000	0.000000	2145.76	169.27
2	FID		ACIS-S-6	7.18	6303	-0.068	0.017	0.011	0.020	0.000000	0.000000	394.41	806.77
3	GUIDE	used	918160168	8.76	12599	0.069	0.020	0.123	0.205	23.069350	-37.115539	2289.70	-1224.73
4	GUIDE	used	918162792	9.90	12525	-0.089	-0.178	0.152	0.239	23.530396	-36.827604	1285.37	125.58
5	GUIDE	used	918168448	9.12	12595	0.068	0.168	0.111	0.176	23.296229	-36.409984	-235.06	-512.05
6	GUIDE	used	918170416	9.28	12600	-0.144	0.176	0.134	0.210	23.996053	-36.004511	-1639.00	1560.71
7	GUIDE	used	918169640	10.42	12163	0.107	-0.184	0.247	0.402	23.742817	-36.099326	-1319.62	812.76

2.4 Star Slots

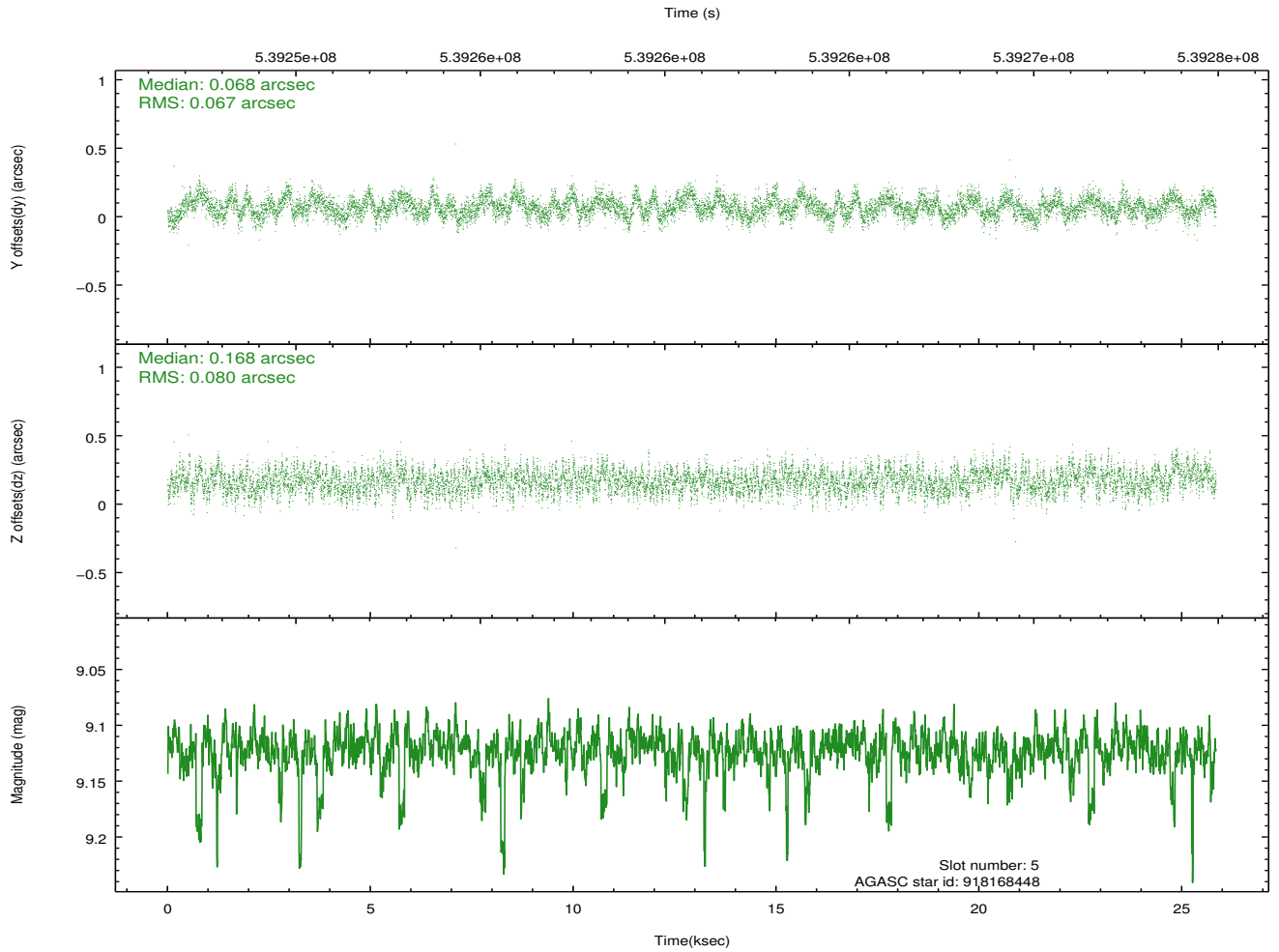
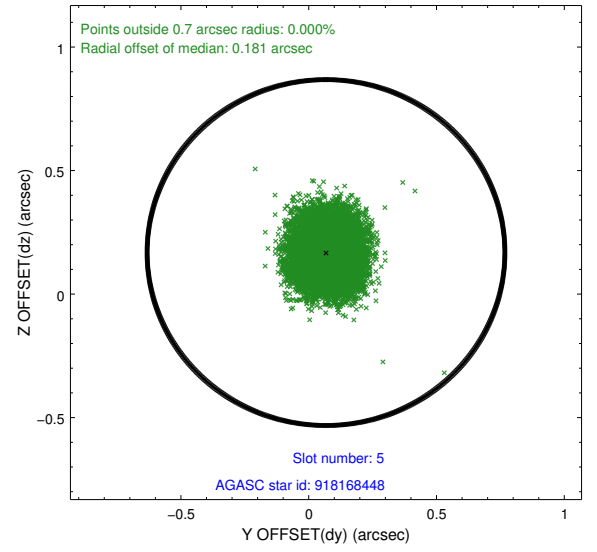
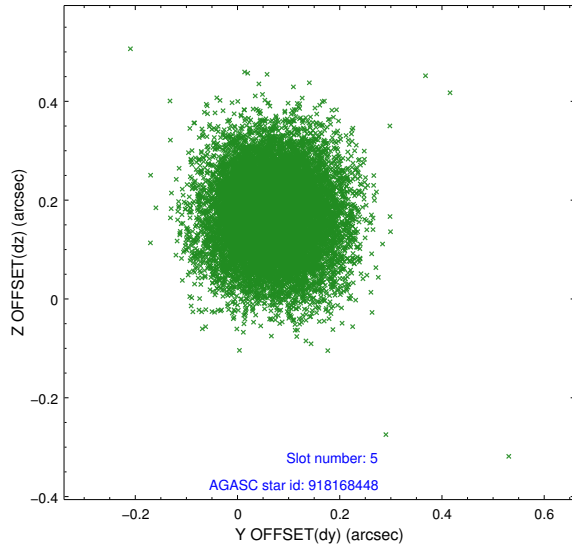
2.4.1 Slot 3



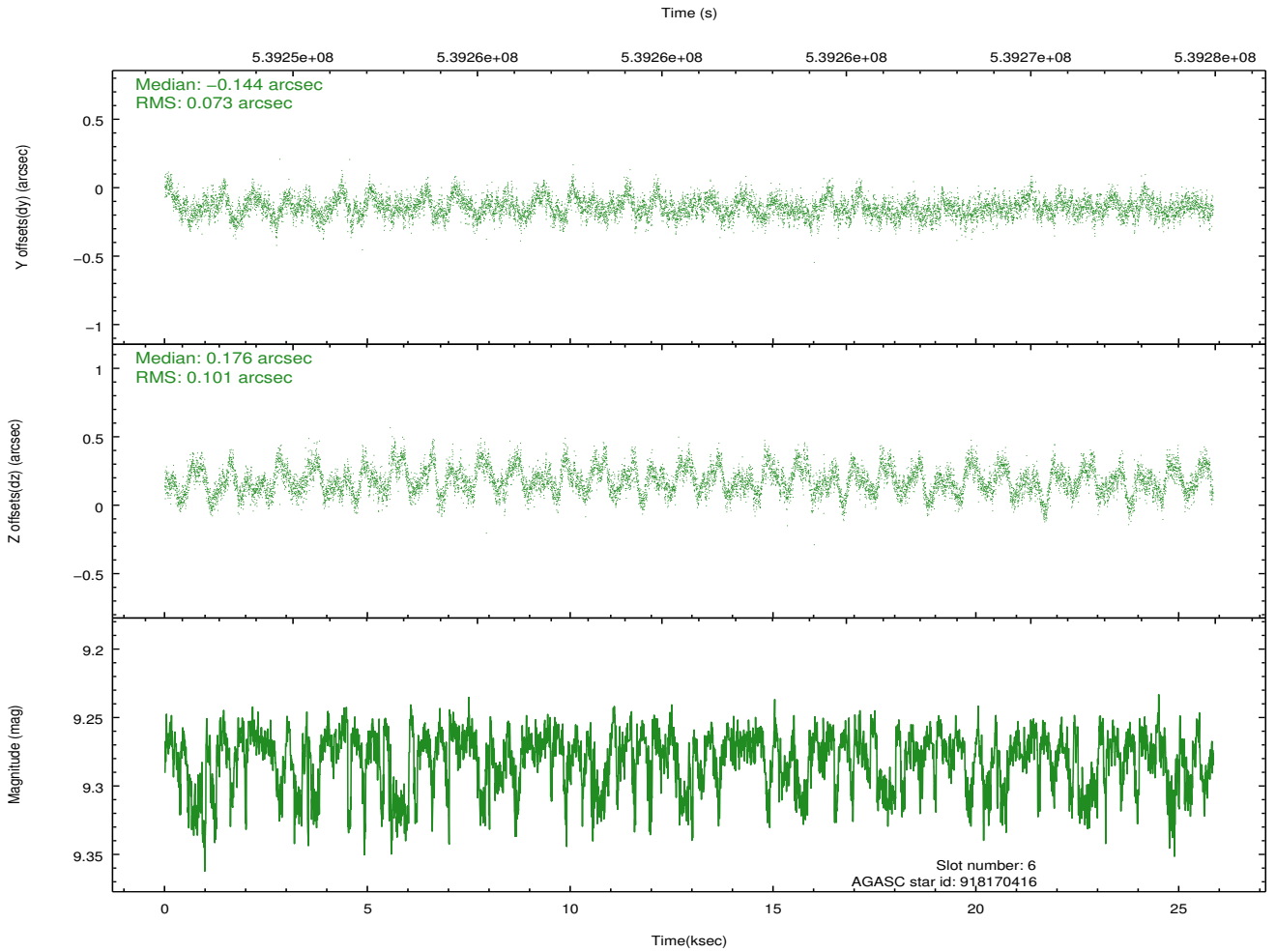
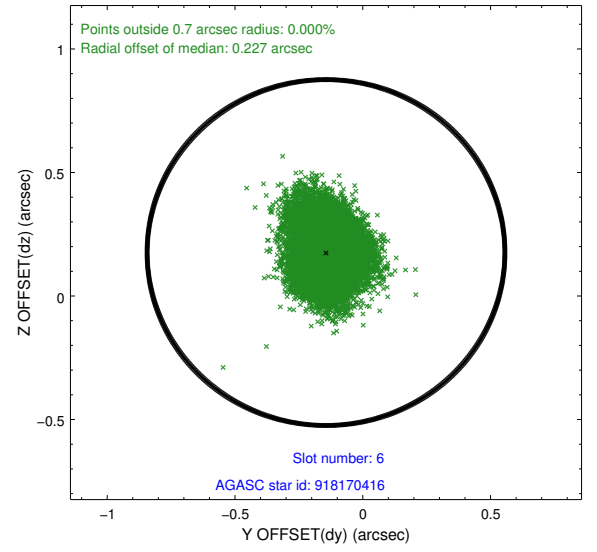
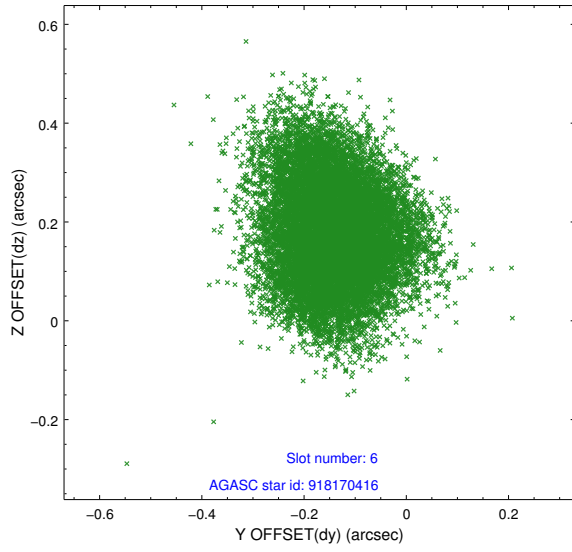
2.4.2 Slot 4



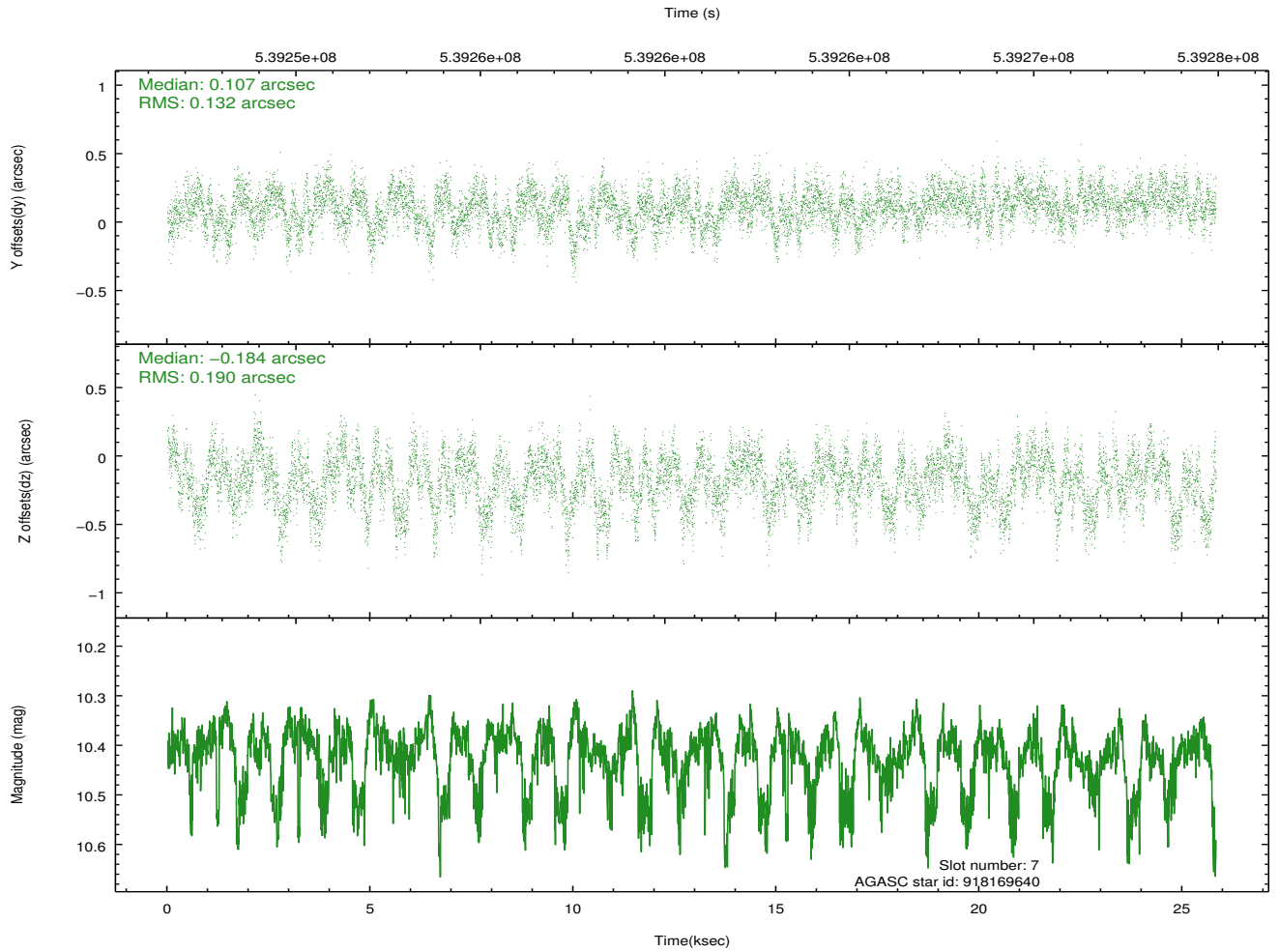
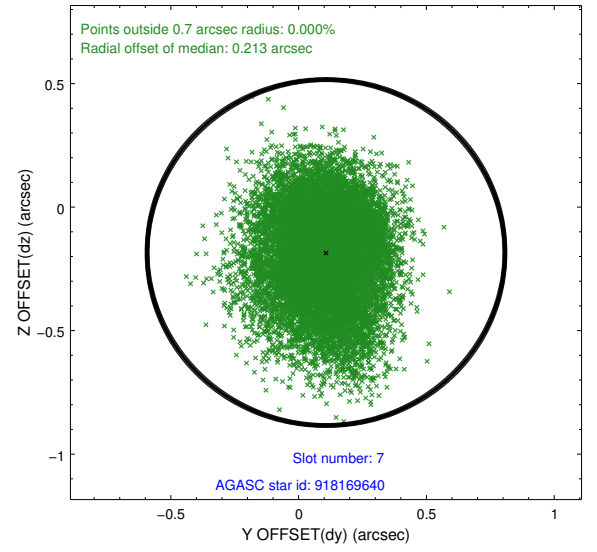
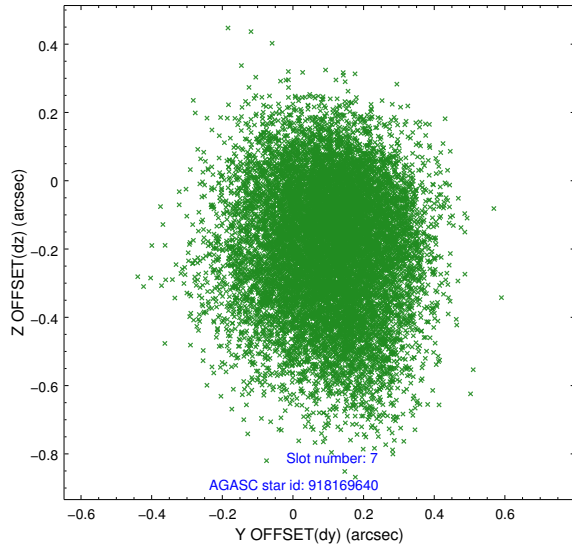
2.4.3 Slot 5



2.4.4 Slot 6

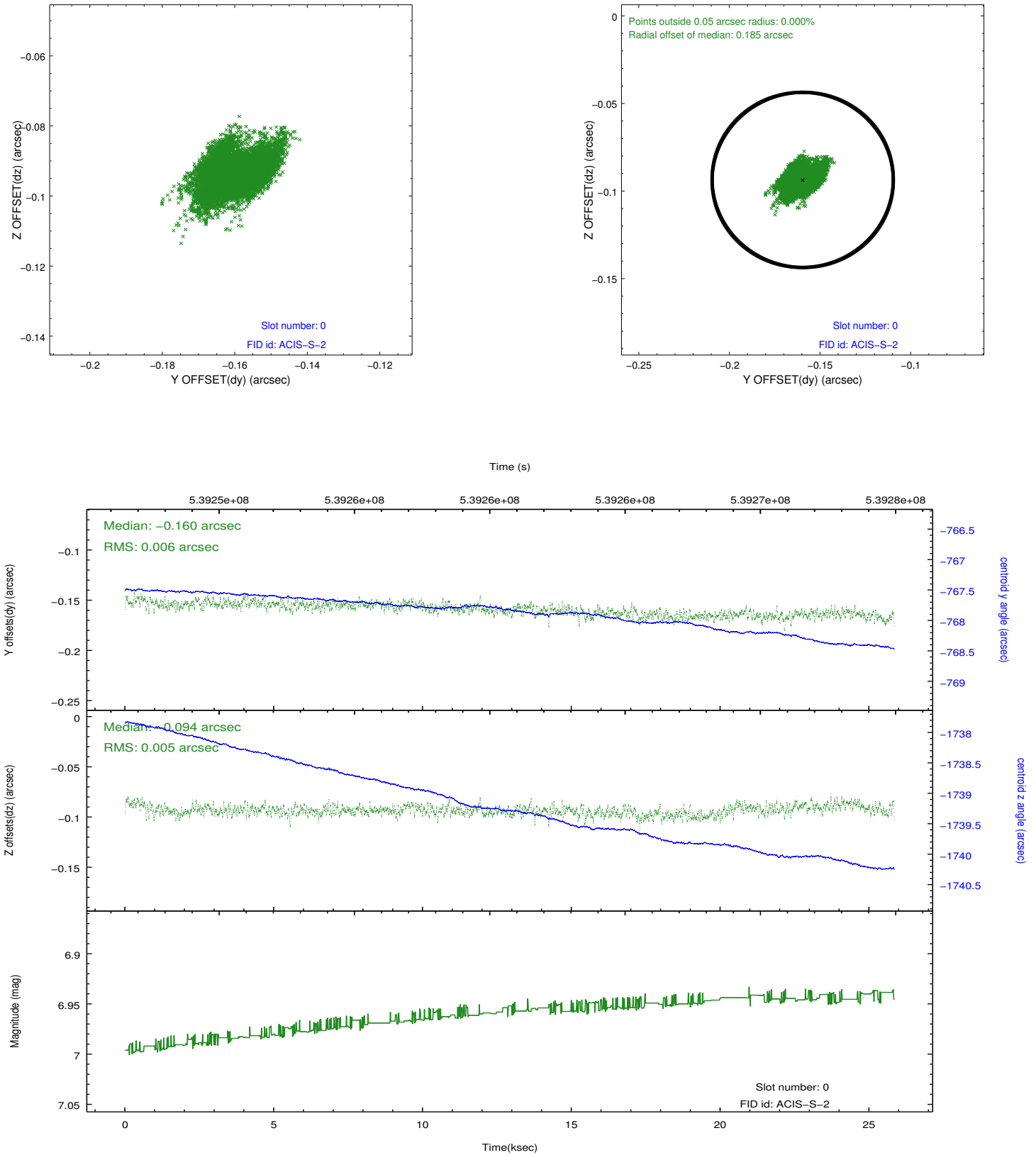


2.4.5 Slot 7

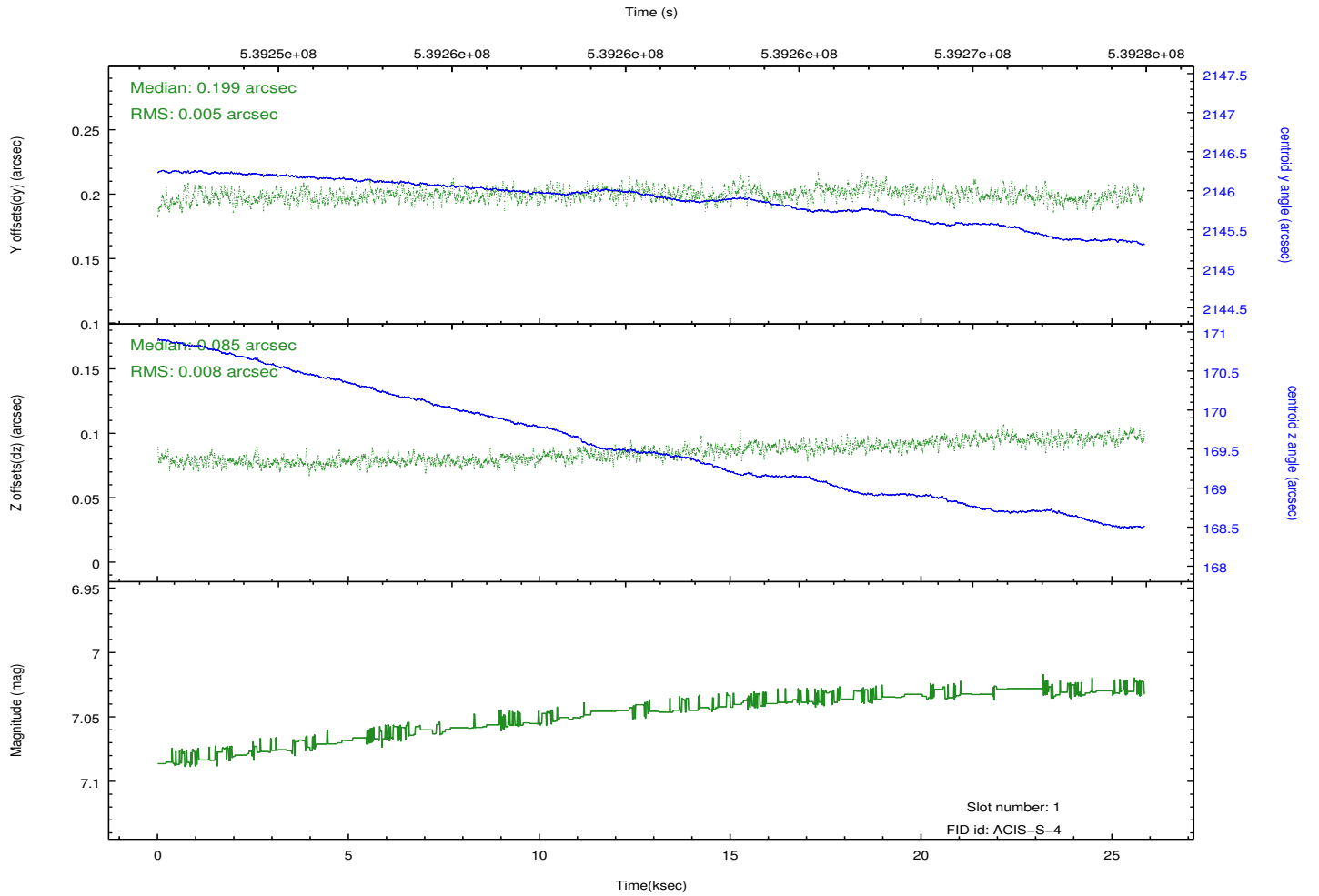
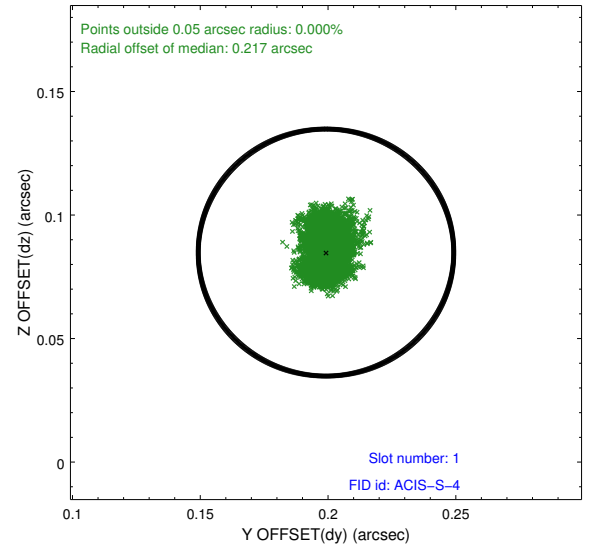
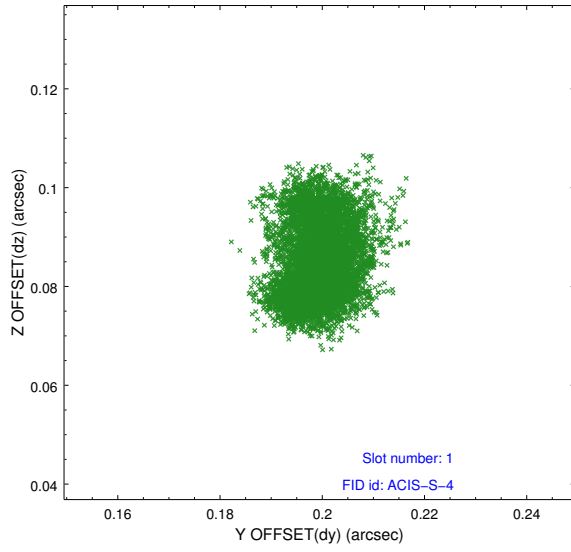


2.5 FID Slots

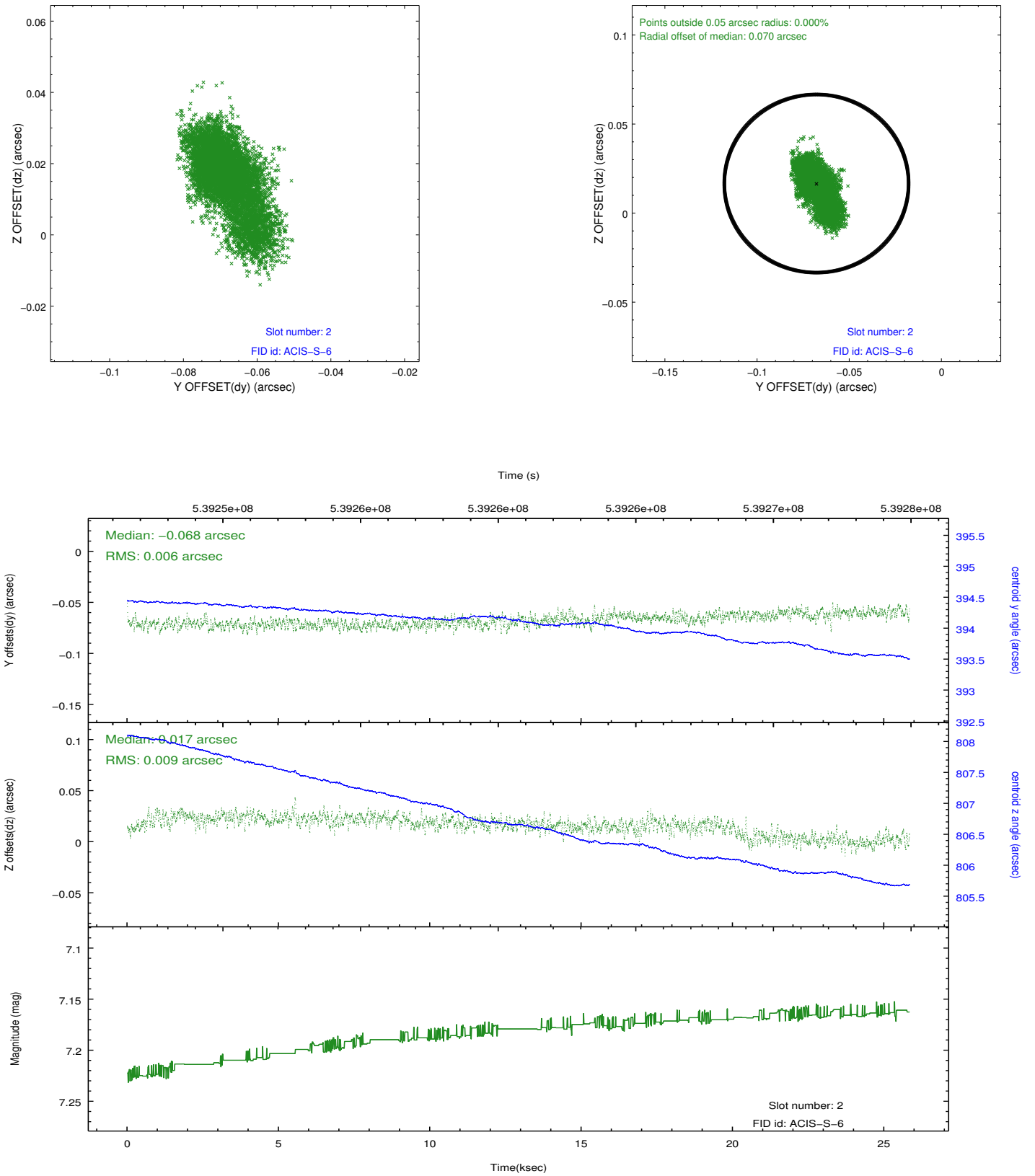
2.5.1 Slot 0



2.5.2 Slot 1



2.5.3 Slot 2



A Summary

A.1 Status

V&V Scientist	Joy Nichols
V&V Date (YYYY-MM-DD)	2015.02.03
V&V Edition	1
V&V Disposition and Status	OK
V&V Charge Time	25.062376600027

A.2 Comments