

V&V Reference Report

L2 ASCDS Version : 10.3.1

Observation 16274 - L2 Version 1
Chandra X-Ray Center

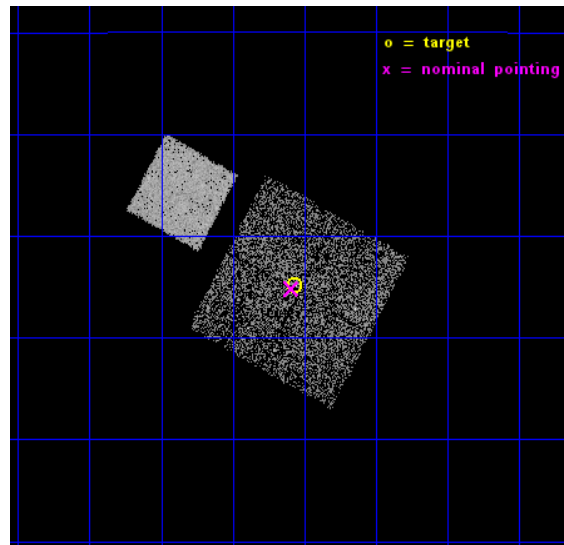
L2 Processing Date : Jan 4 2015

Contents

1	Front	2
2	OBI	3
2.1	OBI	3
2.1.1	Images	3
2.1.2	Bias	3
2.1.3	Parameters	4
2.1.4	Events	4
2.2	Compared Parameters	5
2.3	Aspect	6
2.4	Star Slots	9
2.4.1	Slot 3	9
2.4.2	Slot 4	10
2.4.3	Slot 5	11
2.4.4	Slot 6	12
2.4.5	Slot 7	13
2.5	FID Slots	14
2.5.1	Slot 0	14
2.5.2	Slot 1	15
2.5.3	Slot 2	16
A	Summary	17
A.1	Status	17
A.2	Comments	17

1 Front

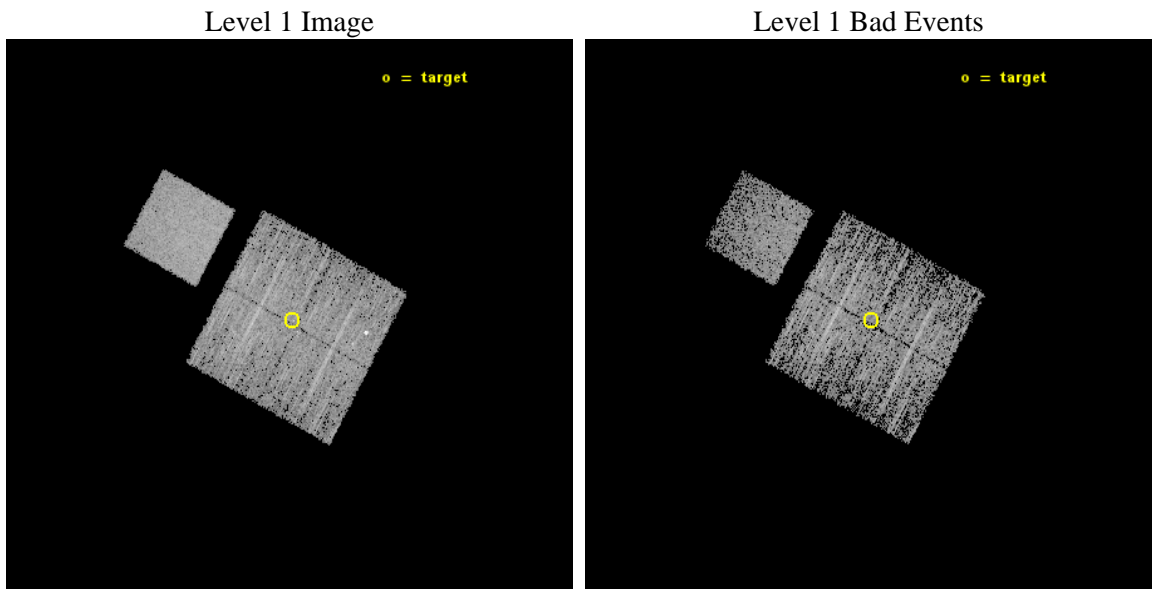
seq_num	703018	Sequence number
obs_id	16274	Observation id
title	X-ray Properties of Selected SDSS Stripe 82 Red Quasars	Proposal t
observer	Dr. Stephen Murray	Principal investigator
object	F2M2216-0054	Source name
dtcycle	0	
cycle	P	events from which exps? Prim/Second/Both
ra_targ	334.141667	Observer's specified target RA [deg]
dec_targ	-0.914194	Observer's specified target Dec [deg]
ra_nom	334.14762798314	Nominal RA [deg]
dec_nom	-0.9198418361922	Nominal Dec [deg]
roll_nom	298.61152033648	Nominal Roll [deg]
revision	1	Processing version of data
ontime	5067.4294335842	Sum of GTIs [s]
livetime	5001.2197374472	Livetime [s]
ontime0	5070.4472739697	Sum of GTIs [s]
ontime1	5070.4883139729	Sum of GTIs [s]
ontime2	5070.5293539762	Sum of GTIs [s]
ontime3	5067.4294335842	Sum of GTIs [s]
ontime7	5070.6114339828	Sum of GTIs [s]
l2events	24986	Number of level 2 events



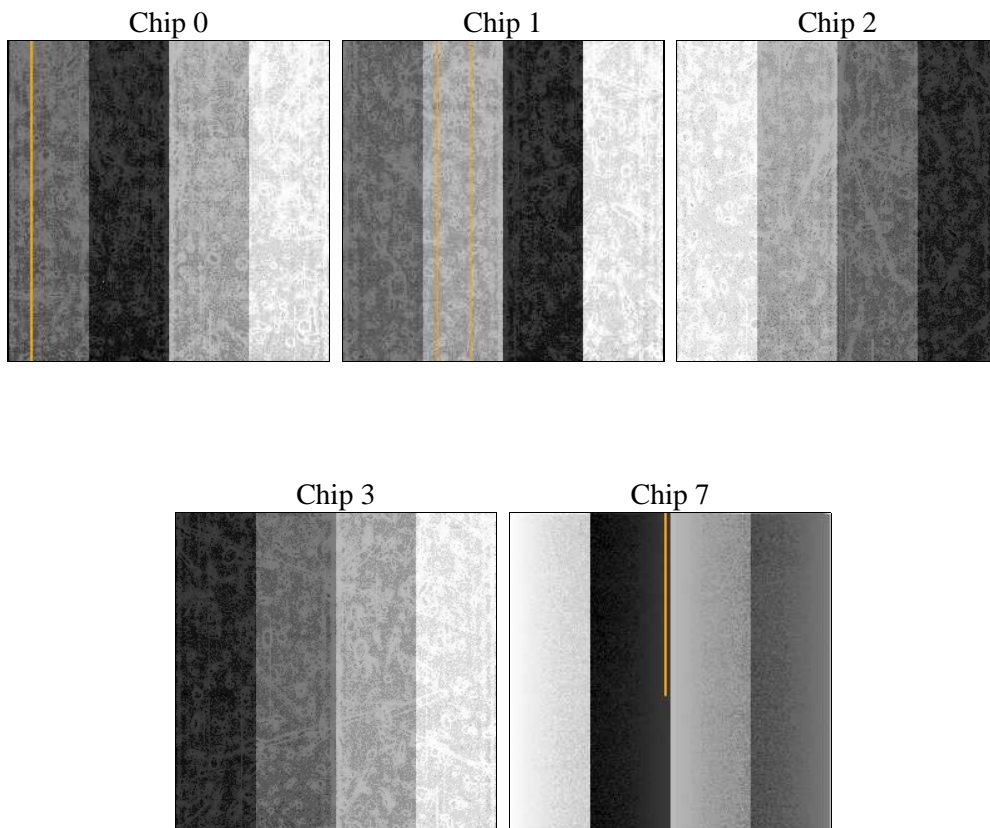
2 OBI

2.1 OBI

2.1.1 Images



2.1.2 Bias



2.1.3 Parameters

obi_num	0	Obi number	sched_exp_time	5000.000000	[s] Scheduled observation exposure time
ascdsver	10.3.1	Processing system revision	ontime	5067.4294335842	Sum of GTIs [s]
caldsver	4.6.5	 	ontime0	5070.4472739697	Sum of GTIs [s]
date	2015-01-05T03:21:23	Date and time of file creation	ontime1	5070.4883139729	Sum of GTIs [s]
revision	1	Processing version of data	ontime2	5070.5293539762	Sum of GTIs [s]
			ontime3	5067.4294335842	Sum of GTIs [s]
			ontime7	5070.6114339828	Sum of GTIs [s]
			l1events	127413	Number of level 1 events

2.1.4 Events

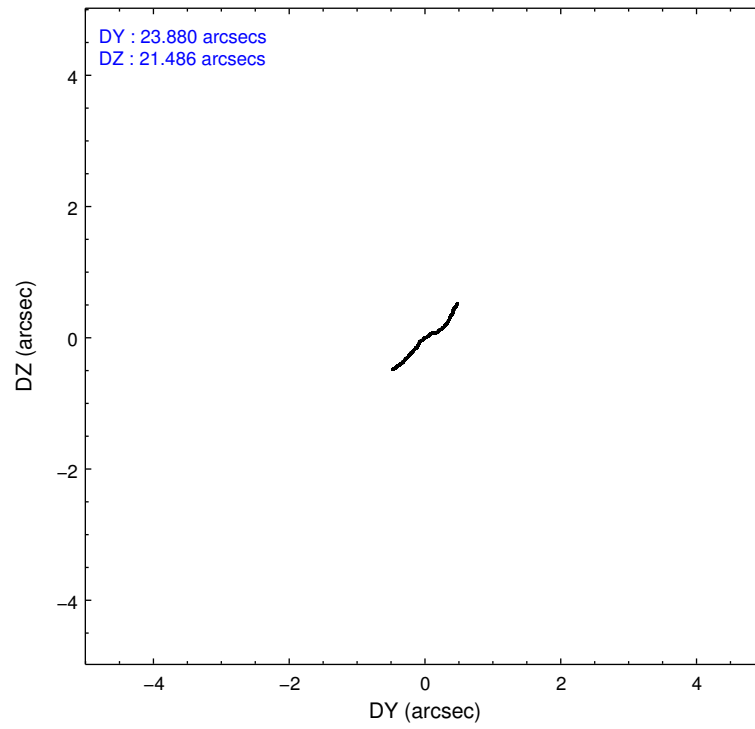
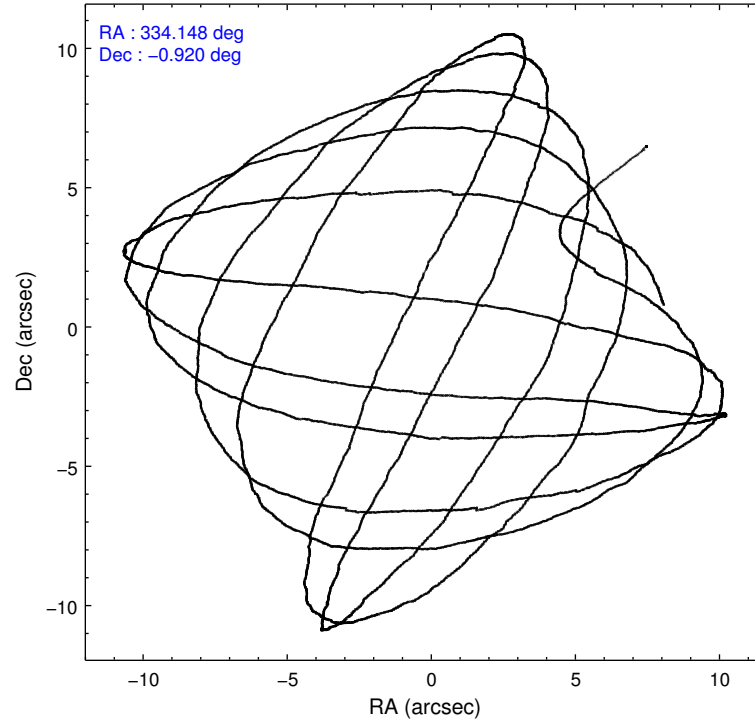
	ccd 0	ccd 1	ccd 2	ccd 3	ccd 7
level 1 events	21671	23391	24755	24112	33484
rejected events	18636	18924	21824	21188	18494
rejected %	85%	80%	88%	87%	55%

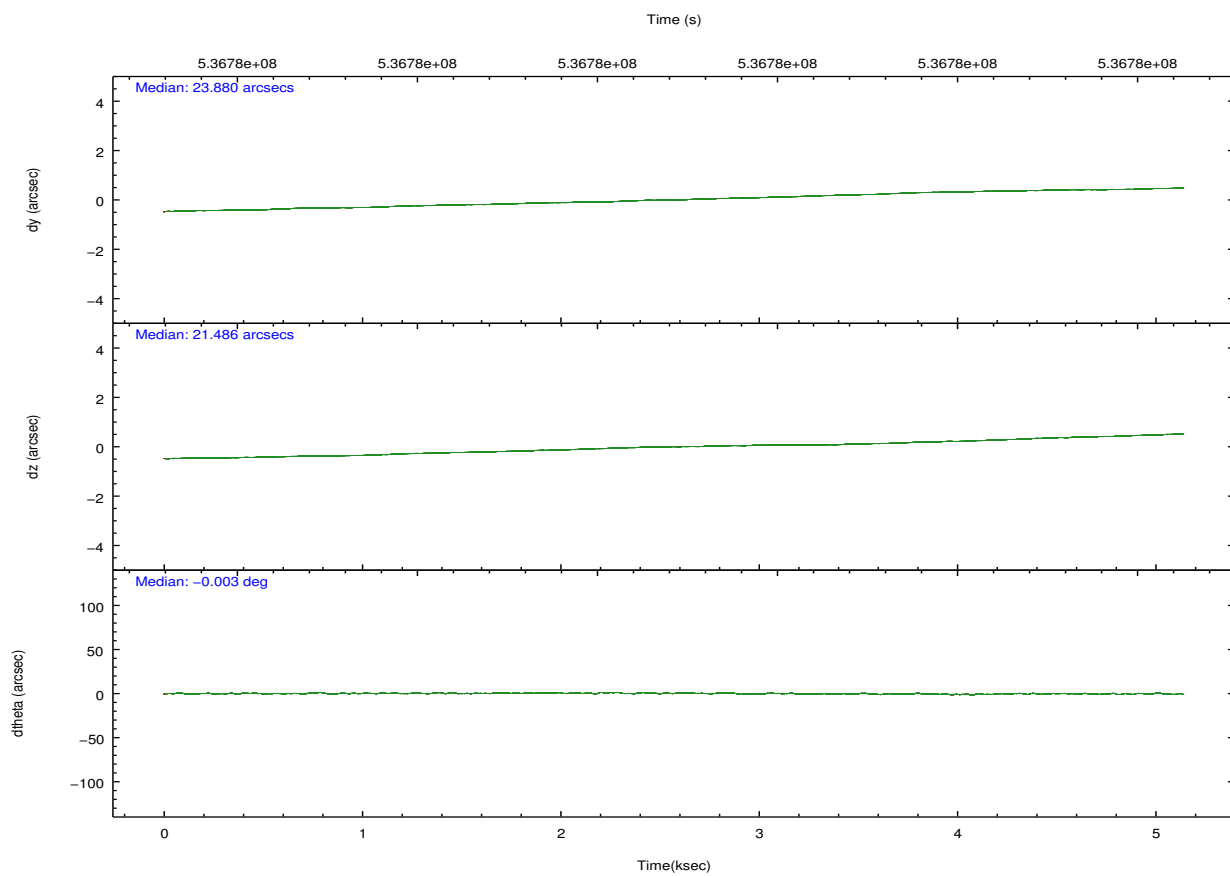
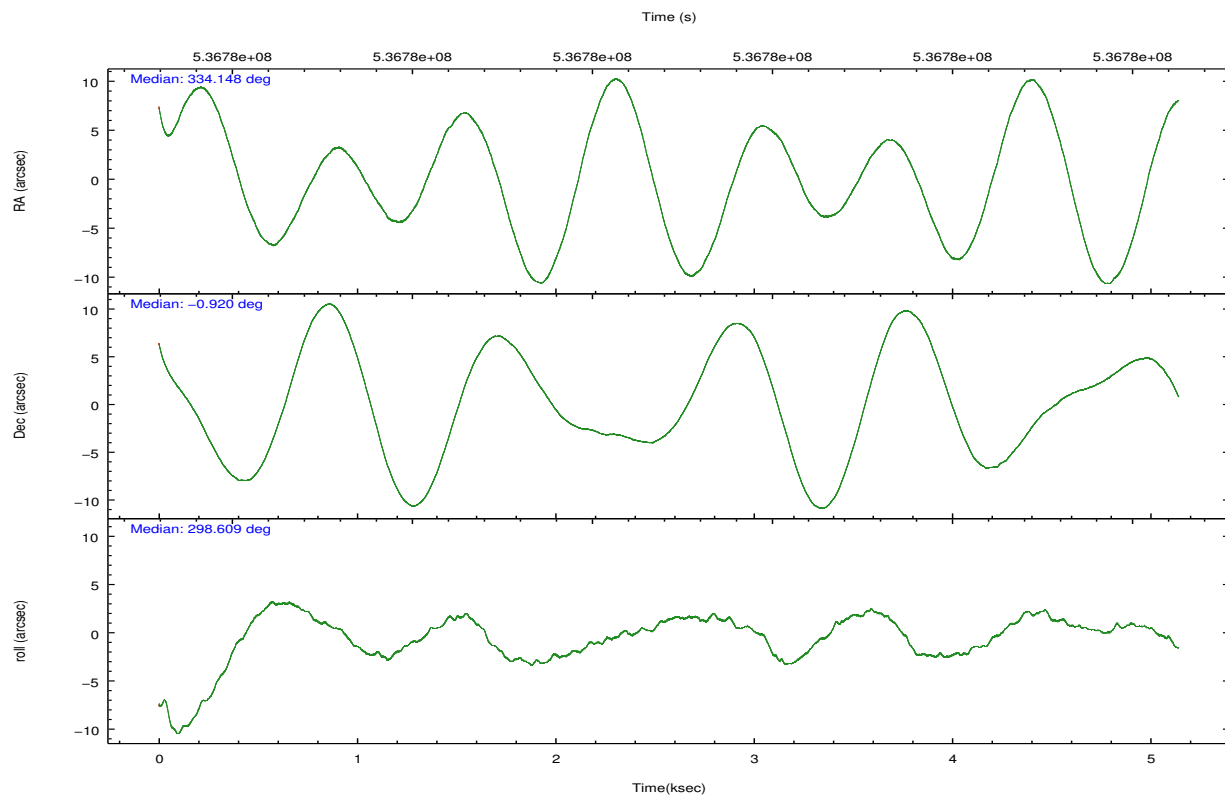
	ccd 0	ccd 1	ccd 2	ccd 3	ccd 7
grade 0 events	1071	2269	1073	1061	1291
	4%	9%	4%	4%	3%
grade 1 events	17	21	18	10	43
	0%	0%	0%	0%	0%
grade 2 events	733	838	684	623	3164
	3%	3%	2%	2%	9%
grade 3 events	335	322	281	324	1257
	1%	1%	1%	1%	3%
grade 4 events	292	317	313	315	1178
	1%	1%	1%	1%	3%
grade 5 events	1142	1225	1086	1311	3419
	5%	5%	4%	5%	10%
grade 6 events	609	723	583	603	8119
	2%	3%	2%	2%	24%
grade 7 events	17472	17676	20717	19865	15013
	80%	75%	83%	82%	44%

2.2 Compared Parameters

Parameter	Planned	Actual	Parameter	Planned	Actual
Instrument	ACIS	ACIS	Obspar format version number	7	7
Detector	ACIS-01237	ACIS-01237	Obspar file type	PREDICTED	ACTUAL
Grating	NONE	NONE	Obspar update status	NONE	UPDATED
Data mode	FAINT	FAINT	CCD I0 on	Y	Y
Observation mode	POINTING	POINTING	CCD I1 on	Y	Y
[deg] Pointing RA	334.123943	334.1476279831354	CCD I2 on	Y	Y
[deg] Pointing Dec	-0.905586	-0.9198418361922018	CCD I3 on	Y	Y
[deg] Pointing Roll	298.402450	298.611520336484	CCD S0 on	N	N
[mm] SIM focus pos	-0.782348	-0.7809083437167272	CCD S1 on	N	N
[mm] SIM defocus	0	0.001439871863259334	CCD S2 on	N	N
[mm] SIM translation stage pos	-233.592463	-233.5874344608287	CCD S3 on	O1	Y
[mm] SIM translation stage offset	0	-0.005018542100998502	CCD S4 on	N	N
[s] Observation start time (MET)	536774987.184000	536773852.30709	CCD S5 on	N	N
Observation start date	2015-01-04T16:08:40	2015-01-04T15:50:52	Number of optional ACIS chips dropped	0	0
[s] Observation end time (MET)	536779987.184000	536780412.81996	On-chip summing requested	N	N
Observation end date	2015-01-04T17:32:00	2015-01-04T17:40:12	Subarray requested	NONE	NONE
Read mode	TIMED	TIMED	Alternating exposures requested	N	N
			[s] Primary exposure time	0.000000	3.1

2.3 Aspect



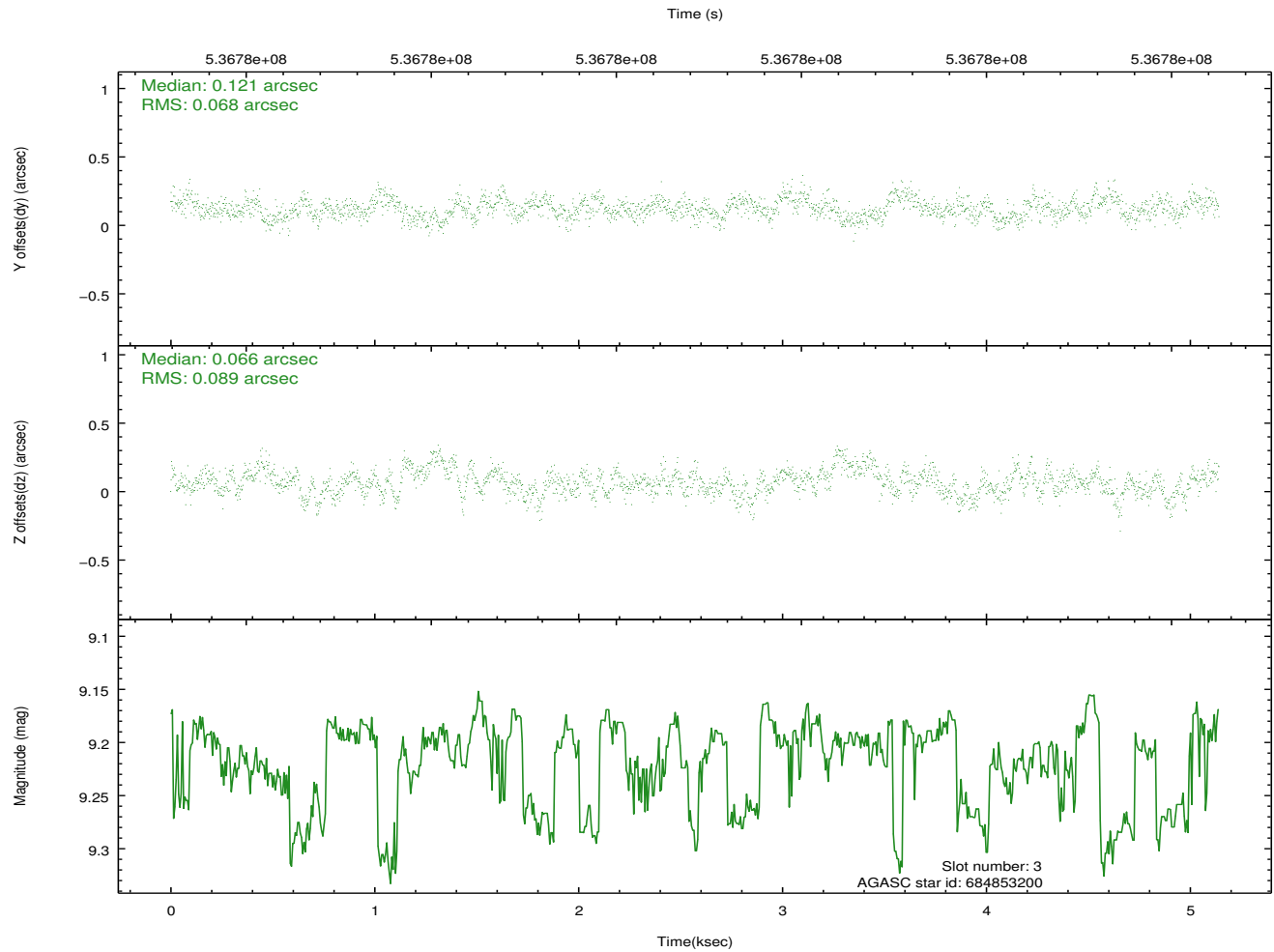
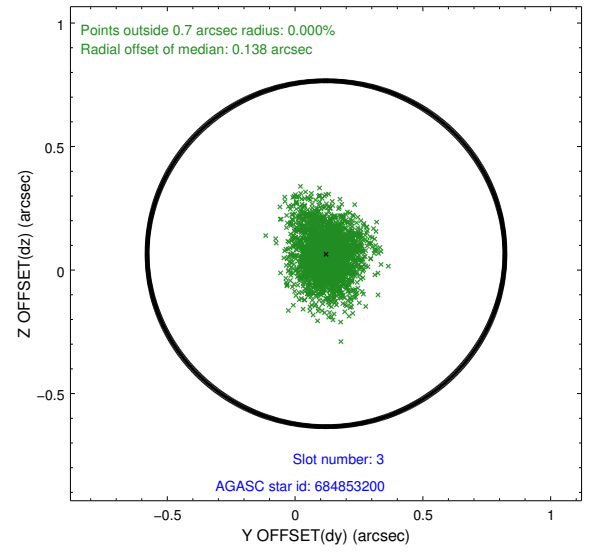
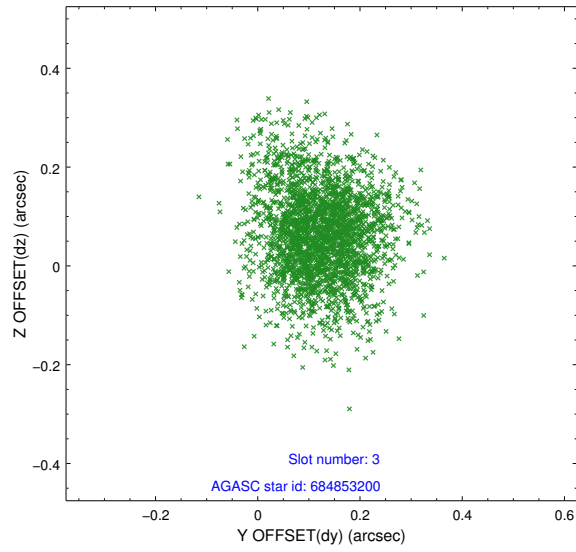


Slot Statistics

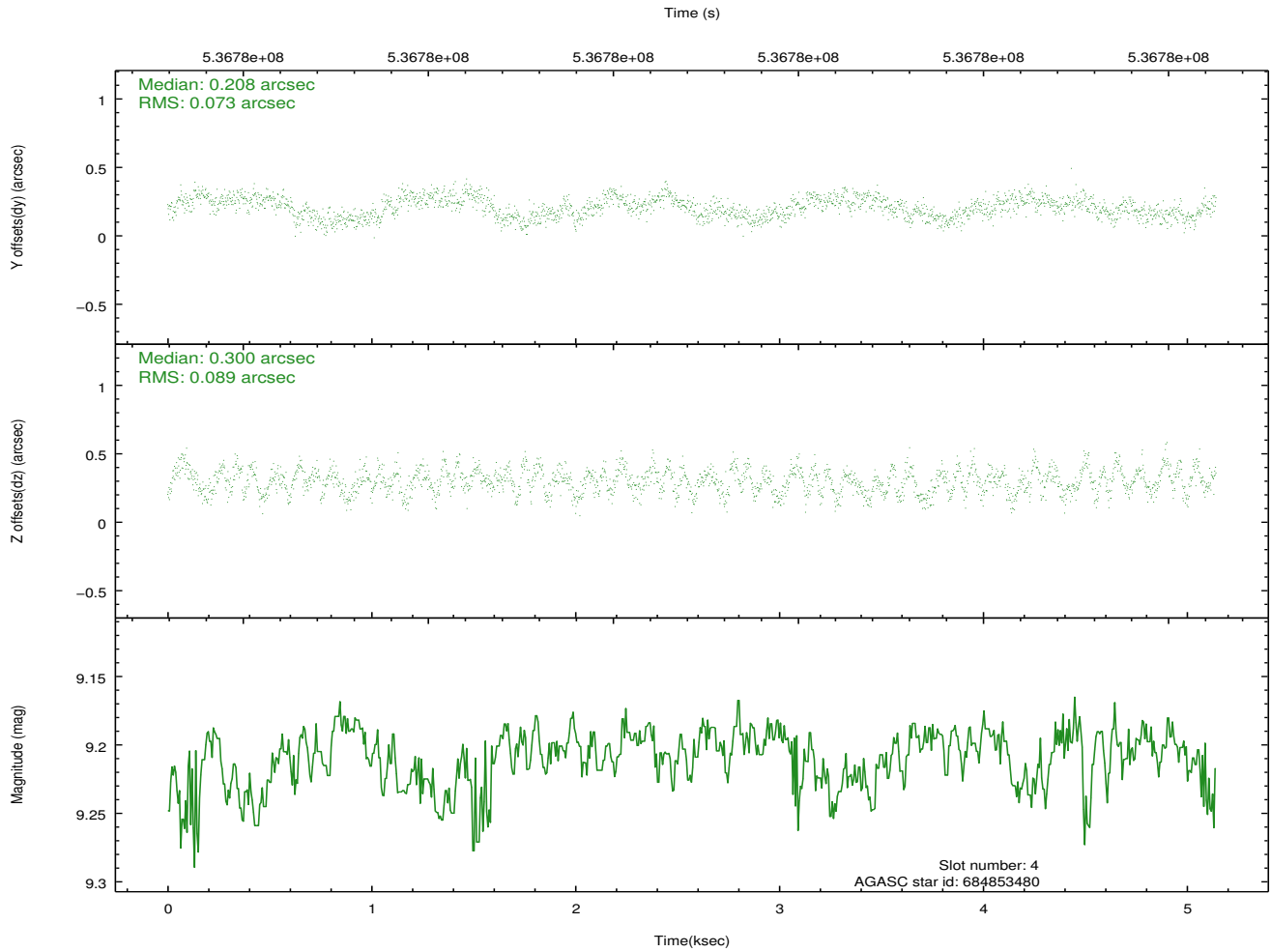
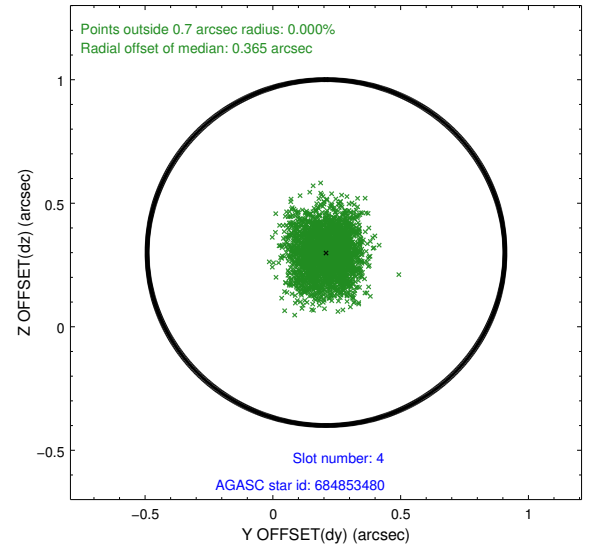
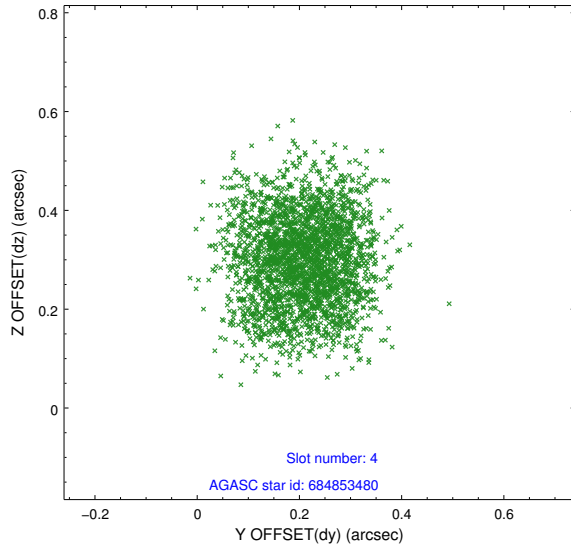
slot	status	used	id	mag	n_pts	med_dy	med_dz	dr1	dr2	ra	dec	mean_y	mean_z
0	FID		ACIS-I-1	7.13	1255	0.072	-0.030	0.010	0.020	0.000000	0.000000	915.40	-845.24
1	FID		ACIS-I-5	7.13	1255	-0.288	0.054	0.008	0.012	0.000000	0.000000	-1832.45	1051.69
2	FID		ACIS-I-6	7.13	1255	0.125	0.046	0.014	0.027	0.000000	0.000000	379.67	1697.55
3	GUIDE	used	684853200	9.21	2509	0.121	0.066	0.116	0.199	333.536858	-0.658666	-1786.08	-1436.36
4	GUIDE	used	684853480	9.21	2506	0.208	0.300	0.125	0.192	333.348189	-0.795562	-1676.42	-2268.52
5	GUIDE	used	684853560	8.24	2508	0.098	0.026	0.089	0.150	333.694634	-0.789710	-1102.02	-1161.96
6	GUIDE	used	684859784	9.10	2509	-0.136	-0.179	0.122	0.188	334.538556	-1.122310	1398.84	942.96
7	GUIDE	used	684863360	7.26	2508	-0.291	-0.211	0.086	0.132	334.623376	-1.122955	1544.18	1210.14

2.4 Star Slots

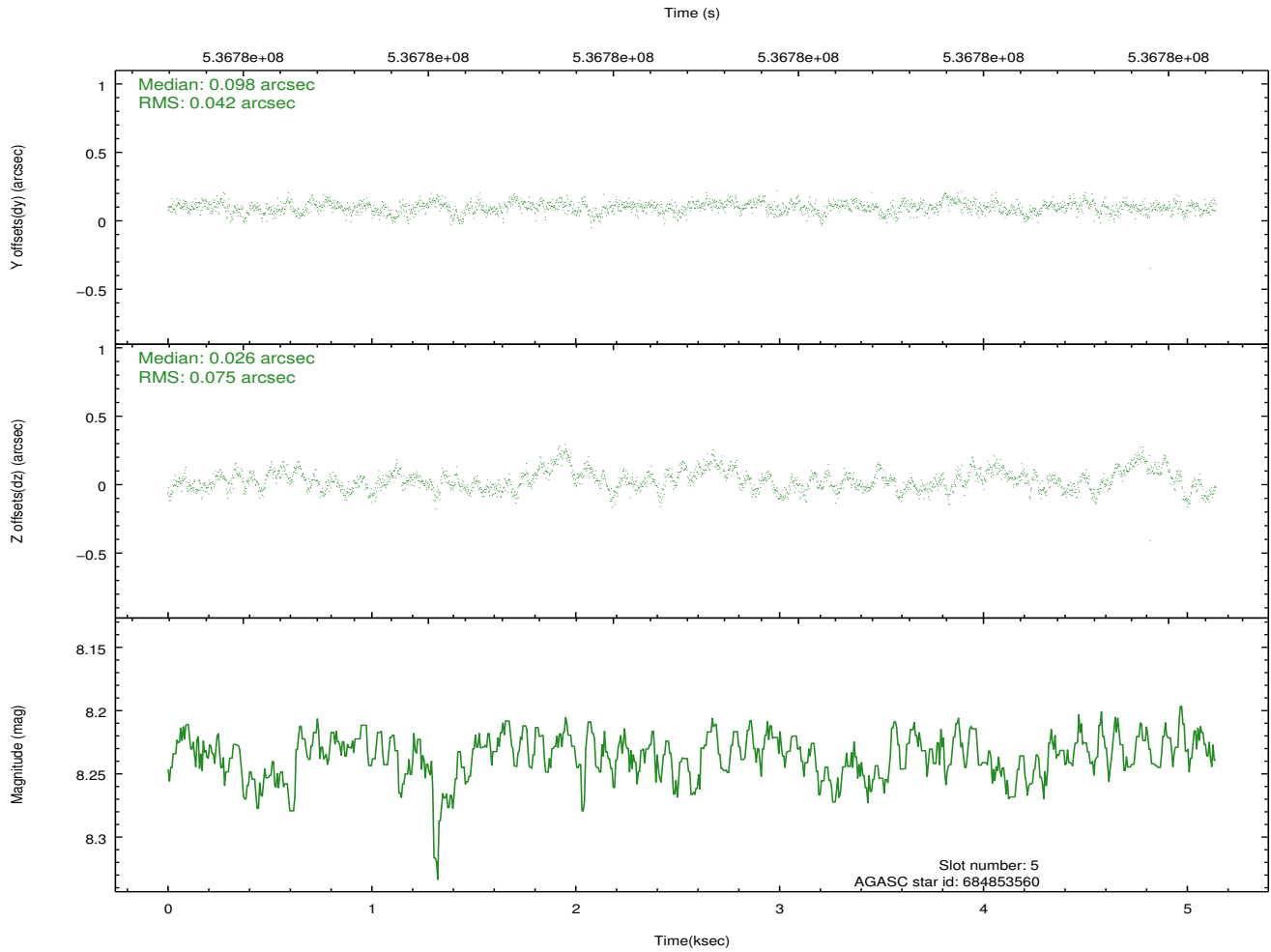
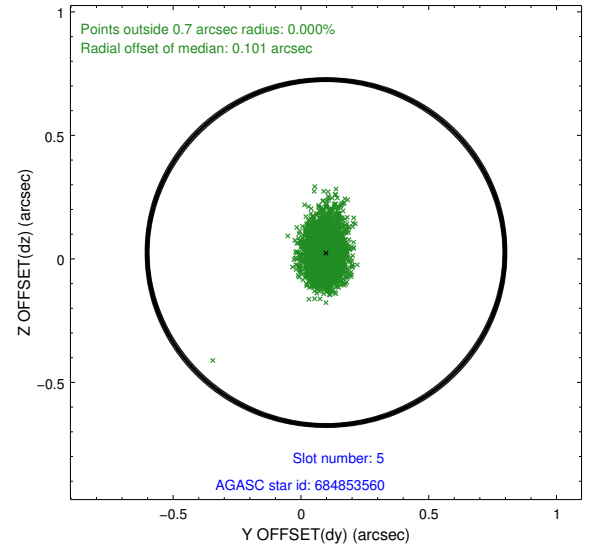
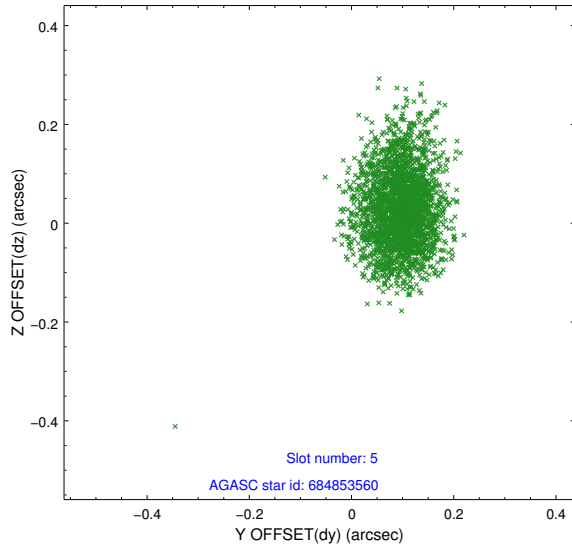
2.4.1 Slot 3



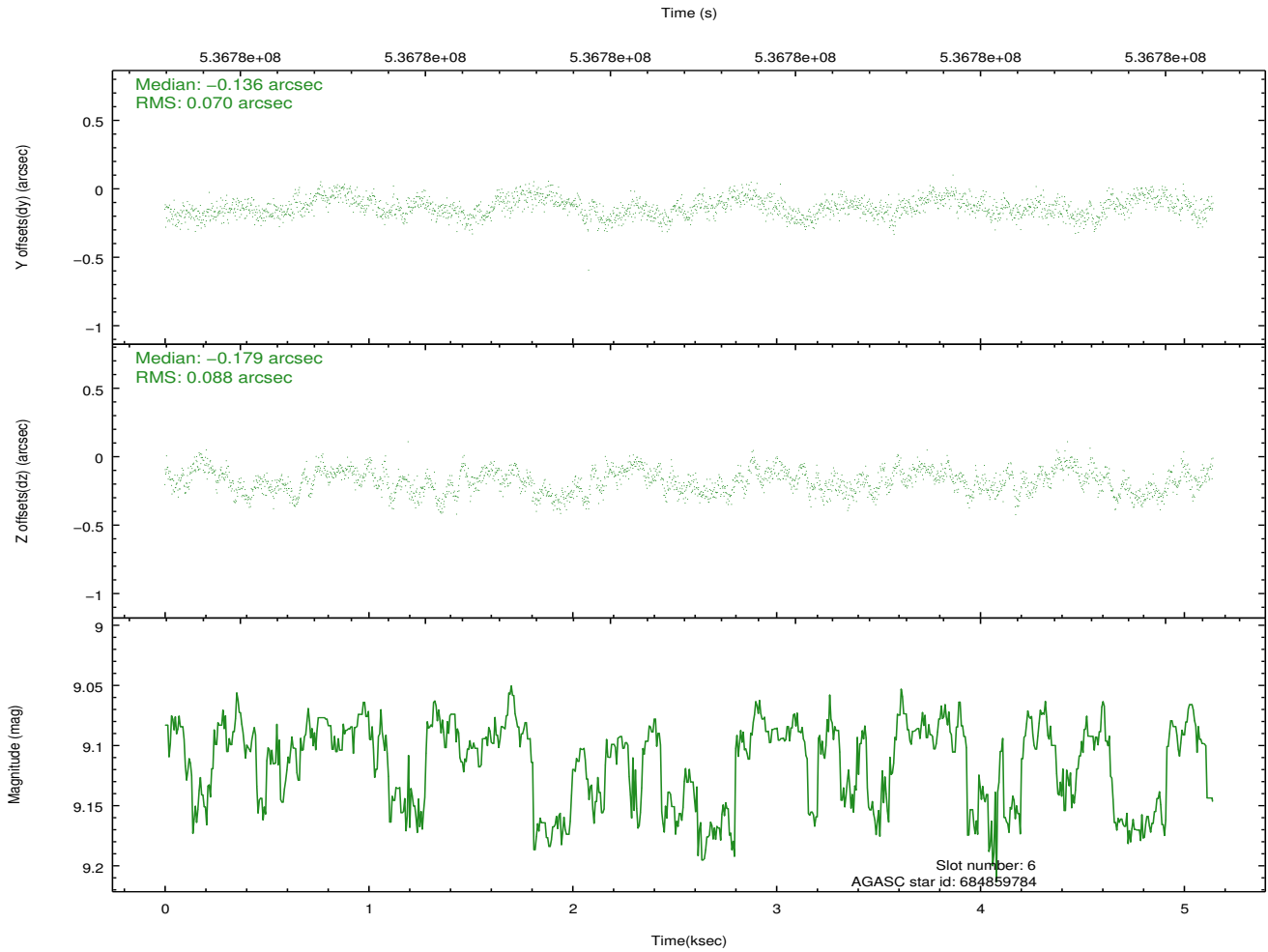
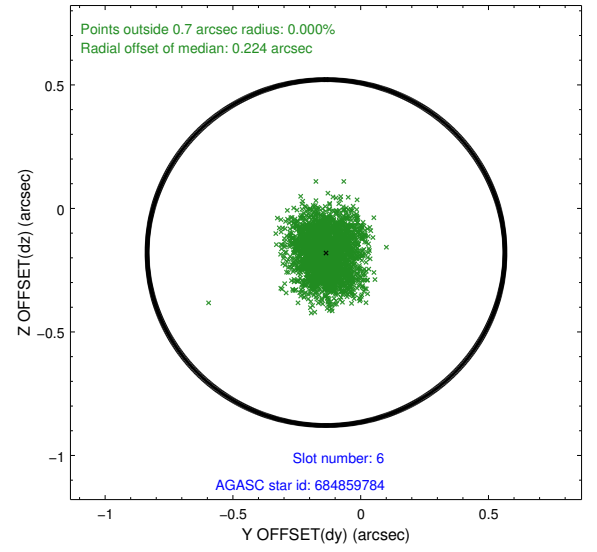
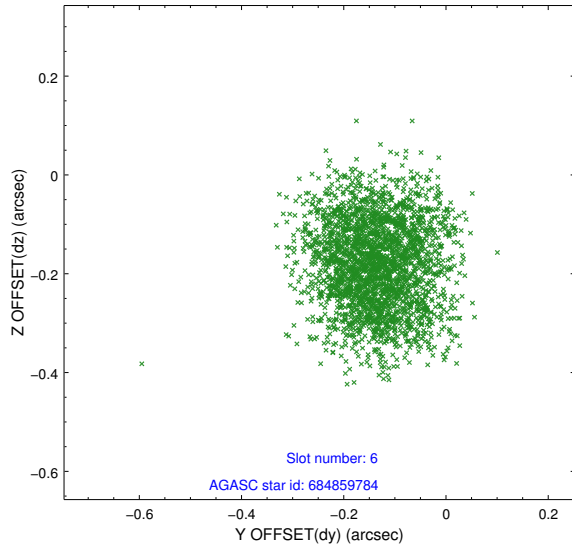
2.4.2 Slot 4



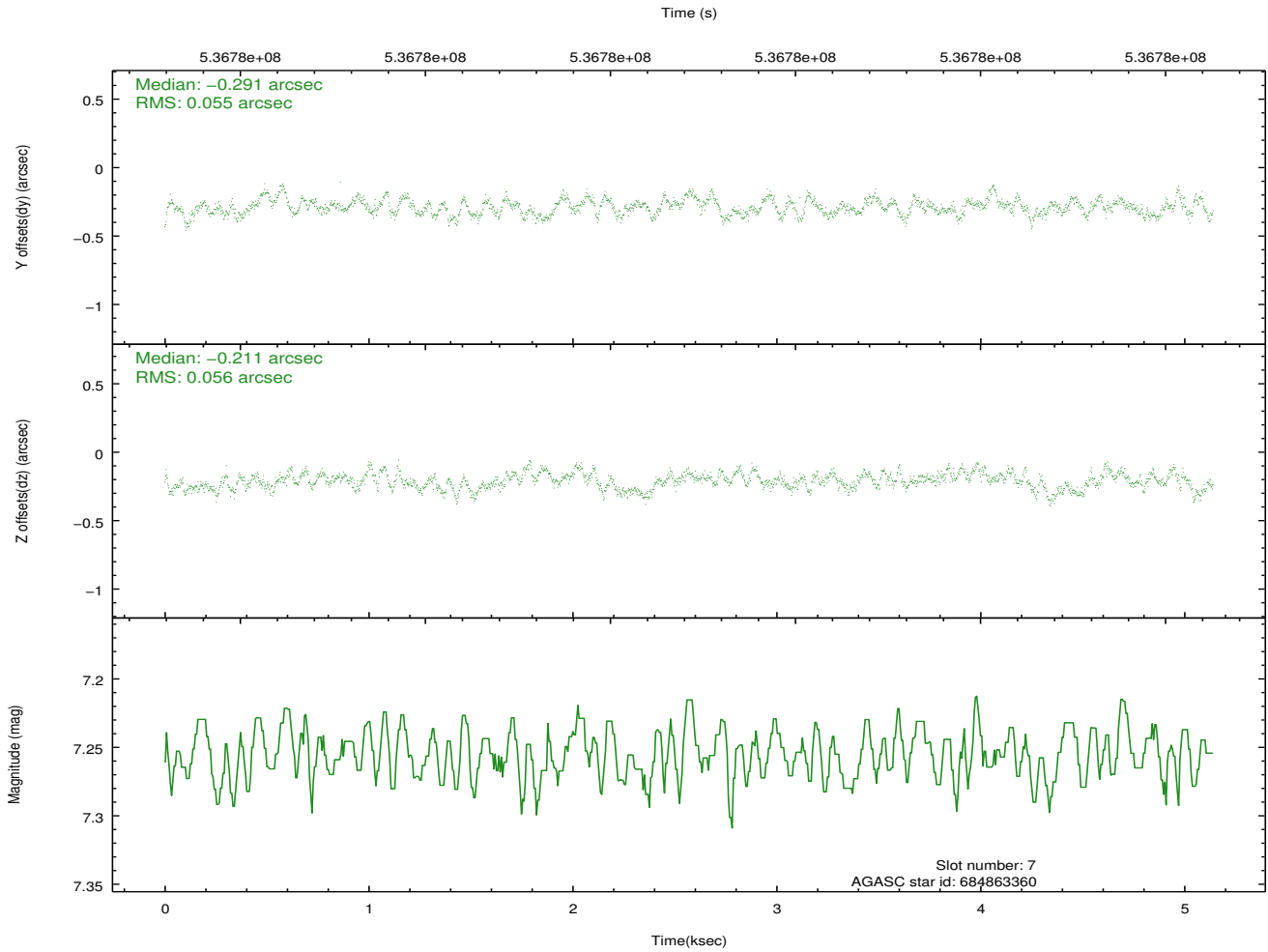
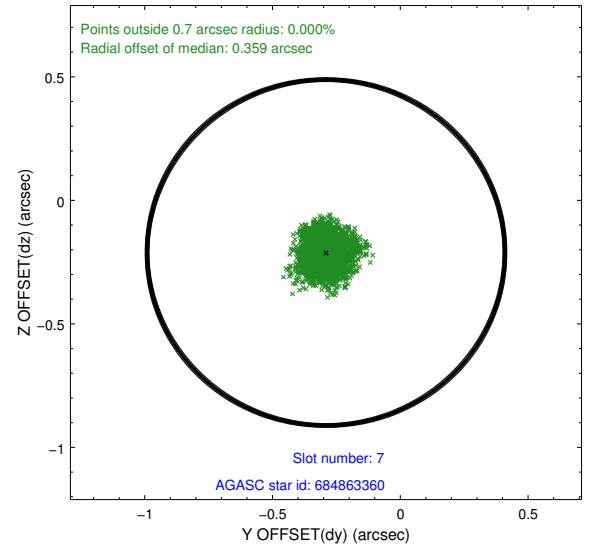
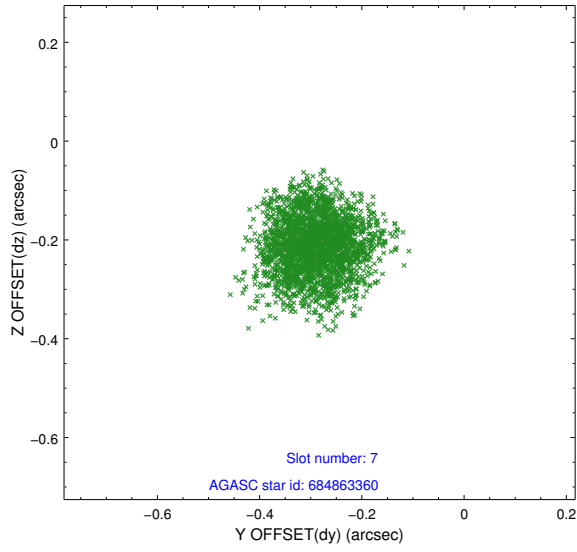
2.4.3 Slot 5



2.4.4 Slot 6

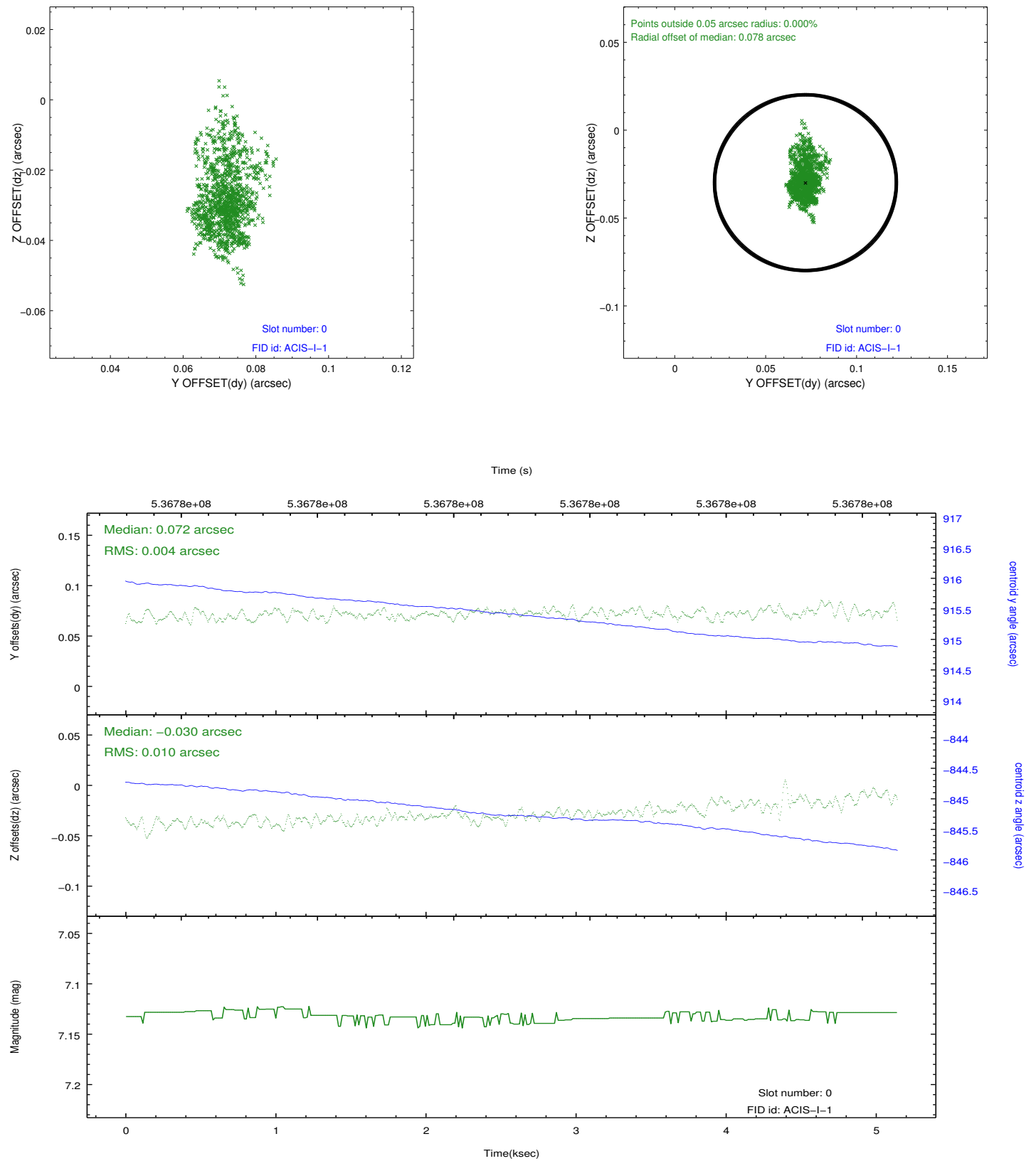


2.4.5 Slot 7

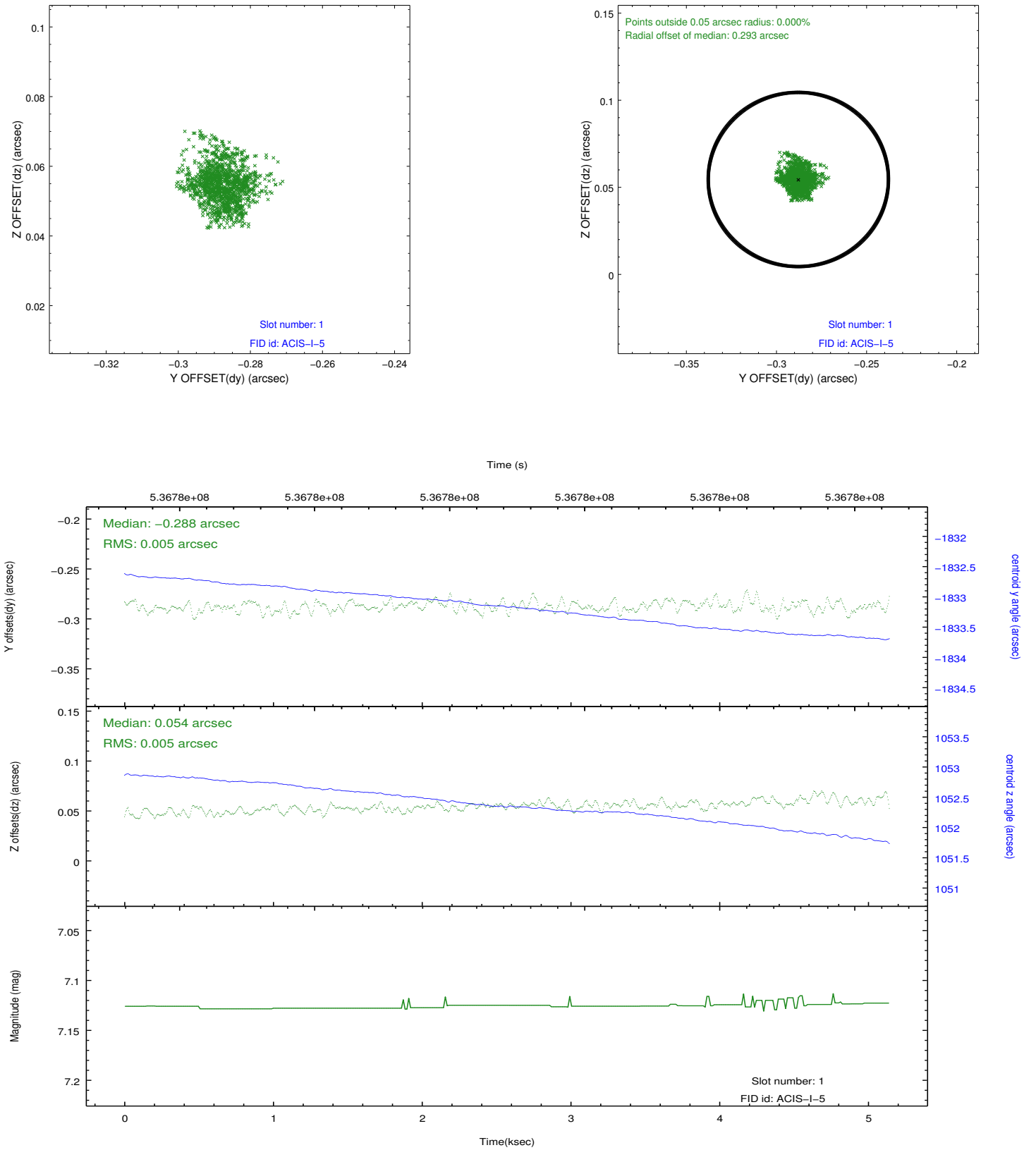


2.5 FID Slots

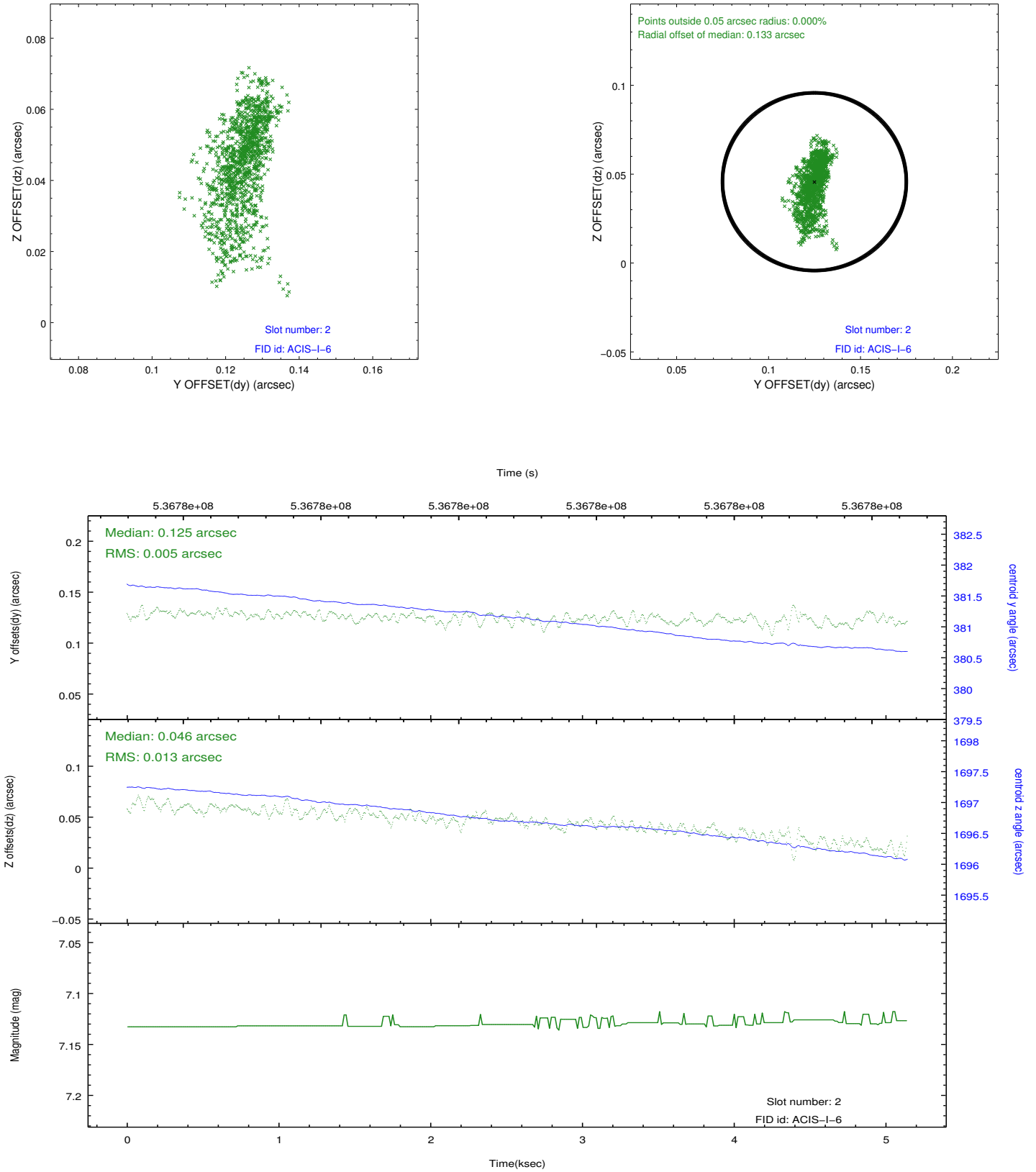
2.5.1 Slot 0



2.5.2 Slot 1



2.5.3 Slot 2



A Summary

A.1 Status

V&V Scientist	Jen Lauer
V&V Date (YYYY-MM-DD)	2015.01.05
V&V Edition	1
V&V Disposition and Status	OK
V&V Charge Time	5.0674294335842

A.2 Comments